

NW 17TH AVENUE BASCULE BRIDGE OVER MIAMI RIVER

PROJECT DEVELOPMENT & ENVIRONMENT (PD&E) STUDY FACT SHEET

PROJECT INFORMATION

The NW 17th Avenue Bascule Bridge was constructed in 1929 and is the only remaining bridge over the Miami River that was built as part of the Harbor Bond Issue of 1926. This bridge is eligible for listing on the National Register of Historic Places.

The PD&E Study involves the potential improvements to the NW 17th Avenue Bascule Bridge over Miami River and the 0.5-mile segment of NW 17th Avenue extending north from NW 7th Street to NW 14th Street in the City of Miami, Miami-Dade County. Also included is the entrance ramp to westbound SR 836/Dolphin Expressway from NW 17th Avenue, and NW North River Drive from NW 17th Avenue to NW 13th Terrace.



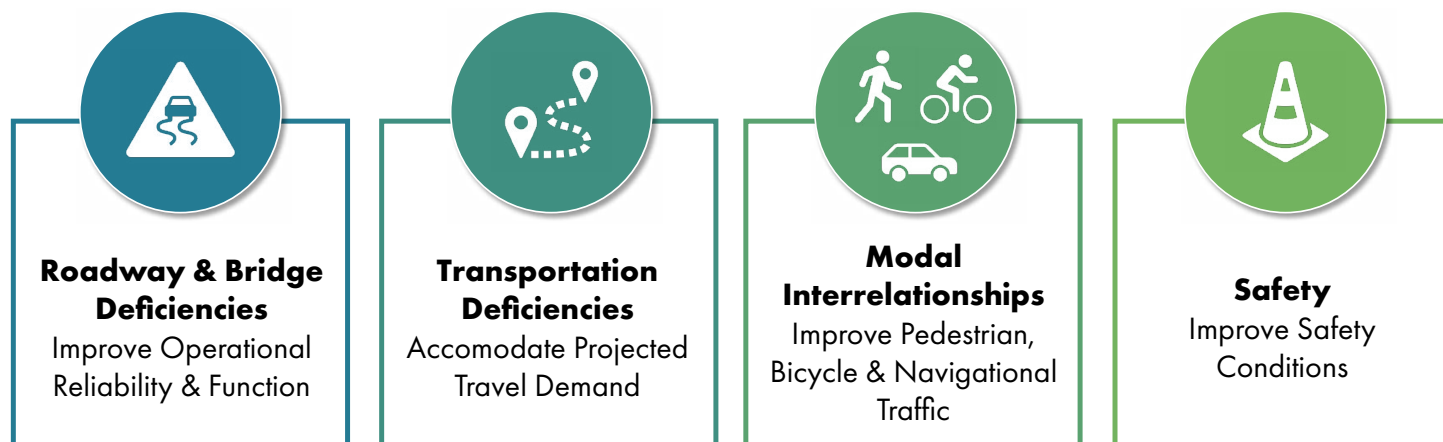
PROJECT LOCATION



The environmental review, consultation, and other actions required by applicable federal environmental laws for this project are being, or have been, carried-out by FDOT pursuant to 23 United States Code (U.S.C.) § 327 and a Memorandum of Understanding (MOU) dated May 26, 2022, and executed by the Federal Highway Administration (FHWA) and FDOT.

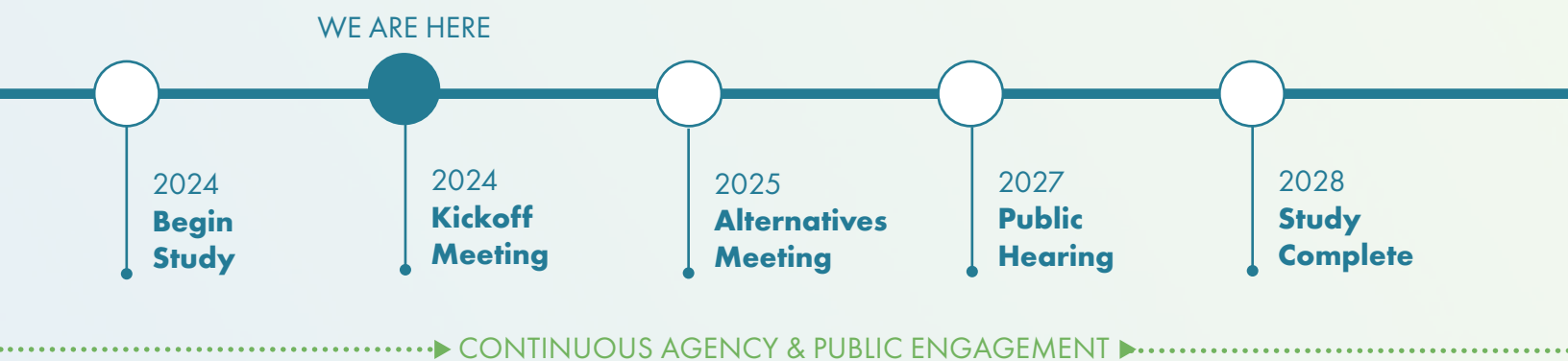
WHY IS THIS STUDY NEEDED?

The purpose of this study is to evaluate alternatives for the NW 17th Avenue Bascule Bridge to improve:



Alternatives, such as replacement or rehabilitation, would improve traffic on the corridor, address the bridge's operational reliability and identified functional deficiencies, and enhance public safety. Additional project objectives are to improve mobility on NW 17th Avenue for pedestrians, bicyclists and transit. The Miami River's navigational channel will be evaluated for increases to the horizontal and vertical channel clearances to improve safety and reduce bridge openings.

PROJECT TIMELINE



STAY CONNECTED

786-714-2792 | 17AveBridgeStudy@miamidade.gov

For more information, please scan the QR code or visit <https://www.miamidade.gov/global/transportation/public-works/nw-17-ave-bridge.page>

