



RIDERSHIP TECHNICAL REPORT

Division of Performance and Materials Management



October 2015

Table of Contents

<i>Table of Contents</i>	2-3
All Modes Overview	4
Total Monthly Weekday, Saturday and Sunday Monthly Boardings By Mode	5
Average Weekday, Saturday and Sunday Boardings by Mode	6
All-Modes Combined Total Monthly Ridership Comparisons By Fiscal Year	7
All Modes Combined Total Monthly and Average Weekday Ridership – Year over Year Comparison Charts	8
Metrobus Total Monthly Ridership Comparisons by Fiscal Year	9
Metrorail Total Monthly Ridership Comparisons by Fiscal Year	10
Metromover Total Monthly Ridership Comparisons by Fiscal Year	11
STS Total Monthly Ridership Comparisons by Fiscal Year	12
Modal Splits	13
Metrobus	14
Monthly and Average Daily Bus Boardings by Route	15-18
Metrobus Holiday Boardings By Route	19
Average Weekday Bus Ridership by Service Type	20-21
Cumulative Percentage Average Weekday Ridership Share – Top 1/4, 1/3, 1/2 and 2/3 of Routes	22
Average Weekday Bus Ridership – Year over Year Comparison Charts	23

Table of Contents (continued)

Metrobus (Continued)

Bus “Top 5 / Bottom 5” Routes Average Weekday Ridership Performance	24
Metrobus Parking Patronage Summary	25

Metrorail 26

Monthly and Average Daily Rail Boardings by Station	27
Metrorail Holiday Boardings By Station	28
Cumulative Percentage Average Weekday Ridership Share – Top 1/4, 1/3, 1/2 and 2/3 of Stations	29
Total Monthly and Average Weekday Rail Ridership – Year over Year Comparison Charts	30
“Top 5 / Bottom 5” Stations Average Weekday Ridership Performance	31
Metrorail Parking Patronage Summary	32

Metromover 33

Monthly and Average Daily Mover Boardings by Station	34
Cumulative Percentage Average Weekday Ridership Share – Top 1/4, 1/3, 1/2 and 2/3 of Stations	35
Average Weekday Mover Ridership – Year over Year Comparison Charts	36
“Top 5 / Bottom 5” Stations Average Weekday Ridership Performance	37

Special Transportation Services (STS) 38

Total Monthly and Average Weekday STS Ridership – Year over Year Comparison Charts	39
--	----

All Modes Overview



TOTAL MONTHLY WEEKDAY, SATURDAY AND SUNDAY BOARDINGS BY MODE
October 2015

TRAVEL MODE	TOTAL WEEKDAY (1) RIDERSHIP	TOTAL SATURDAY RIDERSHIP	TOTAL SUNDAY RIDERSHIP	TOTAL RIDERSHIP	% CHANGE OCT 2014 TOTAL RIDERSHIP
METROBUS	4,969,751	688,996	399,868	6,058,615	-10.02%
METRORAIL	1,677,369	163,193	89,790	1,930,352	-2.31%
METROMOVER	758,317	84,678	56,384	899,379	-1.02%
STS (2)	127,585	11,478	7,760	146,823	-4.09%
TOTAL	7,533,022	948,345	553,802	9,035,169	-7.53%

- (1) Total weekday ridership includes Monday, October 12, 2015 (Columbus Day Holiday) on Metrobus and STS, but excludes it on Metrorail and Metromover. Ridership for that day was as follows:

Metrobus = 211,679
 Metrorail = 63,349
 Metromover = 24,106
 STS = 5,226

- (2) October 2015 STS data may not be complete - preliminary submittal.

AVERAGE WEEKDAY, SATURDAY AND SUNDAY BOARDINGS BY MODE October 2015

Travel Mode	Average Weekday	Average Saturday	Average Sunday	% Change Oct 2014 Weekday	% Change Oct 2014 Saturday	% Change Oct 2014 Sunday
METROBUS	226,000	137,800	100,000	-8.5%	-10.0%	-10.1%
METRORAIL	76,900	32,600	22,400	0.8%	-6.6%	-5.9%
METROMOVER	35,000	16,900	14,100	3.2%	-17.2%	-2.8%
STS (1)	5,800	2,300	1,900	-1.7%	-4.2%	-9.5%
Total (2)	343,700	189,600	138,400	-5.3%	-10.1%	-8.7%

(1) October 2015 STS data may not be complete - preliminary submittal

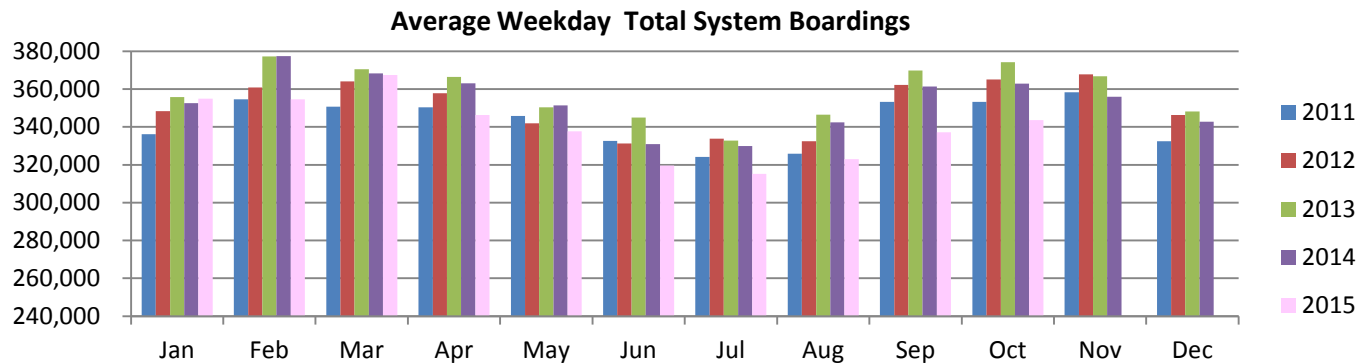
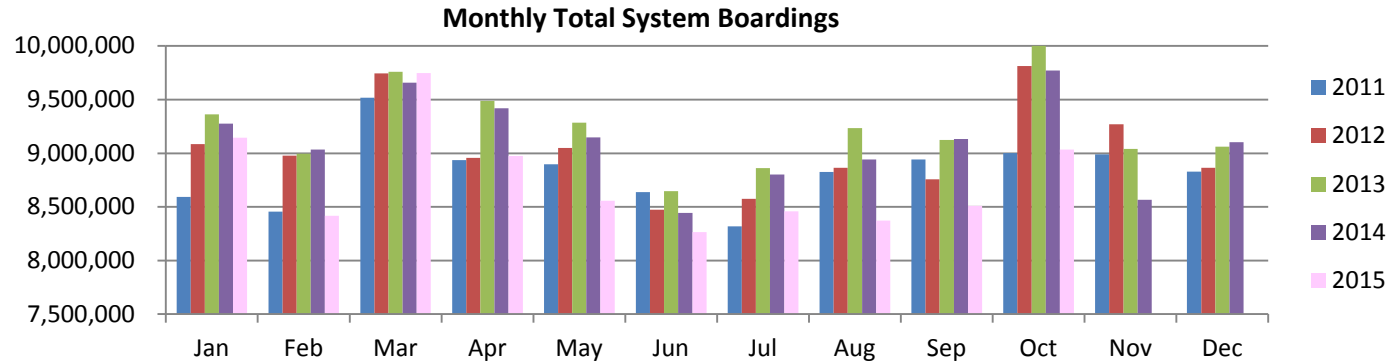
(2) Totals and component averages rounded to the nearest 100 boardings

ALL-MODES COMBINED TOTAL MONTHLY RIDERSHIP COMPARISONS BY FISCAL YEAR

Month	Boardings					Variances				
	FY 11-12	FY 12-13	FY 13-14	FY 14-15	FY 15-16	12 TO 13	13 TO 14	14 TO 15	15 TO 16	12 TO 16
Oct (1)	9,002,012	9,813,214	10,068,544	9,771,384	9,035,169	9.0%	2.6%	-3.0%	-7.5%	0.4%
Nov	8,990,810	9,269,022	9,041,288	8,566,872		3.1%	-2.5%	-5.2%		
Dec	8,829,398	8,863,734	9,060,265	9,101,659		0.4%	2.2%	0.5%		
Jan	9,085,398	9,362,506	9,274,756	9,144,662		3.1%	-0.9%	-1.4%		
Feb	8,978,926	8,996,370	9,033,111	8,416,526		0.2%	0.4%	-6.8%		
Mar	9,744,223	9,758,224	9,658,965	9,746,143		0.1%	-1.0%	0.9%		
Apr	8,957,761	9,488,659	9,417,913	8,974,654		5.9%	-0.7%	-4.7%		
May	9,048,405	9,284,569	9,147,389	8,558,391		2.6%	-1.5%	-6.4%		
Jun	8,472,882	8,645,403	8,443,226	8,265,327		2.0%	-2.3%	-2.1%		
Jul	8,575,539	8,860,373	8,802,869	8,457,918		3.3%	-0.6%	-3.9%		
Aug	8,865,406	9,234,850	8,942,655	8,372,809		4.2%	-3.2%	-6.4%		
Sep	8,758,408	9,125,077	9,133,748	8,509,349		4.2%	0.1%	-6.8%		
Total	107,309,168	110,702,001	110,024,729	105,885,694		3.2%	-0.6%	-3.8%		

(1) October 2015 STS data may not be complete - preliminary submittal.

TOTAL MONTHLY AND AVERAGE WEEKDAY RIDERSHIP YEAR OVER YEAR COMPARISON CHARTS – ALL MODES COMBINED



METROBUS TOTAL MONTHLY RIDERSHIP COMPARISONS BY FISCAL YEAR

Bus	Boardings FY 12	FY 13	Variance 12 to 13	FY 14	Variance 13 to 14	FY 15	Variance 14 to 15	FY 16	Variance 15 to 16	Variance 12 to 16
Oct	6,518,325	6,992,680	7.3%	7,110,756	1.7%	6,733,528	-5.3%	6,058,615	-10.0%	-7.1%
Nov	6,576,998	6,620,453	0.7%	6,387,111	-3.5%	5,962,528	-6.6%			
Dec	6,487,763	6,383,161	-1.6%	6,388,049	0.1%	6,299,190	-1.4%			
Jan	6,632,074	6,622,769	-0.1%	6,480,687	-2.1%	6,303,923	-2.7%			
Feb	6,510,327	6,409,954	-1.5%	6,285,016	-1.9%	5,745,141	-8.6%			
Mar	7,008,247	6,808,012	-2.9%	6,634,261	-2.6%	6,625,764	-0.1%			
Apr	6,470,131	6,687,380	3.4%	6,564,892	-1.8%	6,097,604	-7.1%			
May	6,569,214	6,562,097	-0.1%	6,398,839	-2.5%	5,874,383	-8.2%			
Jun	6,141,707	6,008,363	-2.2%	5,849,882	-2.6%	5,577,419	-4.7%			
Jul	6,206,639	6,232,669	0.4%	6,113,620	-1.9%	5,719,908	-6.4%			
Aug	6,397,822	6,579,651	2.8%	6,259,080	-4.9%	5,709,703	-8.8%			
Sep	6,309,027	6,476,776	2.7%	6,370,467	-1.6%	5,737,433	-9.9%			
Total	77,828,274	78,383,965	0.7%	76,842,660	-2.0%	72,386,524	-5.8%			

METRORAIL TOTAL MONTHLY RIDERSHIP COMPARISONS BY FISCAL YEAR

Rail	Boardings FY 12	FY 13	Variance 12 to 13	FY 14	Variance 13 to 14	FY 15	Variance 14 to 15	FY 16	Variance 15 to 16	Variance 12 to 16
Oct	1,562,078	1,828,768	17.1%	1,918,472	4.9%	1,976,097	3.0%	1,930,352	-2.3%	23.6%
Nov	1,540,968	1,704,093	10.6%	1,723,168	1.1%	1,706,362	-1.0%			
Dec	1,487,052	1,593,959	7.2%	1,722,115	8.0%	1,810,803	5.1%			
Jan	1,571,314	1,760,755	12.1%	1,820,300	3.4%	1,857,513	2.0%			
Feb	1,566,839	1,683,387	7.4%	1,784,117	6.0%	1,765,236	-1.1%			
Mar	1,704,827	1,903,432	11.6%	1,932,811	1.5%	1,996,221	3.3%			
Apr	1,594,087	1,867,082	17.1%	1,900,743	1.8%	1,897,764	-0.2%			
May	1,562,507	1,810,150	15.8%	1,814,954	0.3%	1,790,898	-1.3%			
Jun	1,446,176	1,699,845	17.5%	1,686,597	-0.8%	1,778,063	5.4%			
Jul	1,475,744	1,698,181	15.1%	1,725,647	1.6%	1,777,949	3.0%			
Aug	1,604,091	1,757,105	9.5%	1,741,692	-0.9%	1,729,701	-0.7%			
Sep	1,590,419	1,731,647	8.9%	1,822,047	5.2%	1,824,002	0.1%			
Total	18,706,102	21,038,404	12.5%	21,592,663	2.6%	21,910,609	1.5%			

METROMOVER TOTAL MONTHLY RIDERSHIP COMPARISONS BY FISCAL YEAR

Mover	Boardings FY 12	FY 13	Variance 12 to 13	FY 14	Variance 13 to 14	FY 15	Variance 14 to 15	FY 16	Variance 15 to 16	Variance 12 to 16
Oct	781,879	837,145	7.1%	885,612	5.8%	908,681	2.6%	899,379	-1.0%	15.0%
Nov	736,247	803,831	9.2%	796,012	-1.0%	768,595	-3.4%			
Dec	724,504	755,040	4.2%	819,462	8.5%	859,907	4.9%			
Jan	744,511	835,870	12.3%	836,770	0.1%	847,910	1.3%			
Feb	762,468	766,316	0.5%	831,367	8.5%	776,527	-6.6%			
Mar	884,318	902,678	2.1%	950,840	5.3%	980,141	3.1%			
Apr	753,146	786,015	4.4%	806,409	2.6%	835,099	3.6%			
May	768,700	764,493	-0.5%	789,168	3.2%	755,966	-4.2%			
Jun	747,354	800,003	7.0%	770,303	-3.7%	771,743	0.2%			
Jul	754,501	787,453	4.4%	823,317	4.6%	821,465	-0.2%			
Aug	724,021	757,563	4.6%	805,298	6.3%	803,236	-0.3%			
Sep	720,782	775,004	7.5%	798,525	3.0%	808,322	1.2%			
Total	9,102,431	9,571,411	5.2%	9,913,083	3.6%	9,937,592	0.2%			

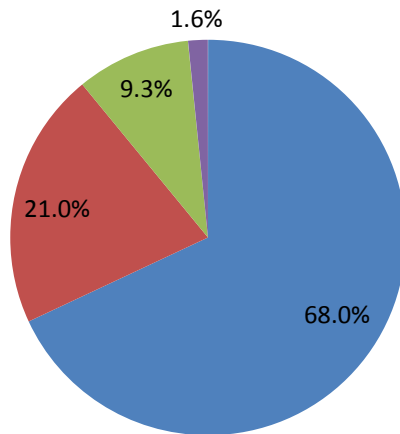
SPECIAL TRANSPORTATION SERVICES (STS) TOTAL MONTHLY RIDERSHIP COMPARISONS BY FISCAL YEAR

STS	Boardings FY 12	FY 13	Variance 12 to 13	FY 14	Variance 13 to 14	FY 15	Variance 14 to 15	FY 16	Variance 15 to 16	Variance 12 to 16
Oct (1)	139,730	154,621	10.7%	153,704	-0.6%	153,078	-0.4%	146,823	-4.1%	5.1%
Nov	136,597	140,645	3.0%	134,997	-4.0%	129,387	-4.2%			
Dec	130,079	131,574	1.1%	130,639	-0.7%	131,759	0.9%			
Jan	137,499	143,112	4.1%	136,999	-4.3%	135,316	-1.2%			
Feb	139,292	136,713	-1.9%	132,611	-3.0%	129,622	-2.3%			
Mar	146,831	144,102	-1.9%	141,053	-2.1%	144,017	2.1%			
Apr	140,397	148,182	5.5%	145,869	-1.6%	144,187	-1.2%			
May	147,984	147,829	-0.1%	144,428	-2.3%	137,144	-5.0%			
Jun	137,645	137,192	-0.3%	136,444	-0.5%	138,102	1.2%			
Jul	138,655	142,070	2.5%	140,285	-1.3%	138,596	-1.2%			
Aug	139,472	140,531	0.8%	136,585	-2.8%	130,169	-4.7%			
Sep	138,180	141,650	2.5%	142,709	0.7%	139,592	-2.2%			
Total	1,672,361	1,708,221	2.1%	1,676,323	-1.9%	1,650,969	-1.5%			

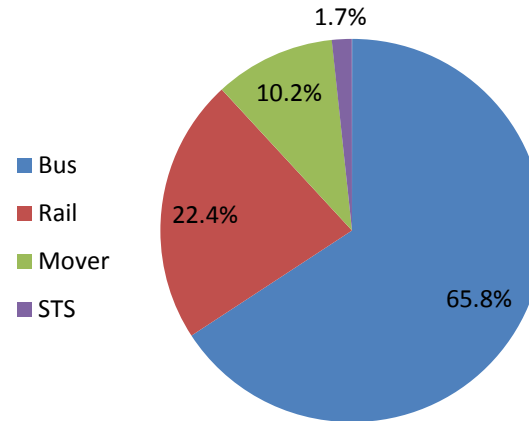
(1) October 2015 STS data may not be complete; preliminary submittal.

AVERAGE WEEKDAY RIDERSHIP - MODAL SPLITS

October 2014



October 2015



Bus
Rail
Mover
STS

October 2015

Metrobus



October 2015

METROBUS MONTHLY AND AVERAGE DAILY BOARDINGS BY ROUTE

Route	Average Weekday	Average Weekday	Percent Change	Average Saturday	Average Saturday	Percent Change	Average Sunday	Average Sunday	Percent Change	Total Monthly	Total Monthly	Percent Change
	Oct-15	Oct-14	15 vs 14	Oct-15	Oct-14	15 vs 14	Oct-15	Oct-14	15 vs 14	Oct-15	Oct-14	15 vs 14
1	504	616	-18.2%	405	502	-19.2%	295	390	-24.4%	14,286	17,726	-19.4%
2	2,805	3,080	-8.9%	1,691	1,908	-11.4%	1,129	1,268	-10.9%	74,691	83,549	-10.6%
3	7,349	8,256	-11.0%	7,425	8,295	-10.5%	5,536	6,151	-10.0%	220,951	247,661	-10.8%
6	800	782	2.2%	629	648	-3.0%	506	634	-20.2%	22,762	23,118	-1.5%
7	4,242	4,290	-1.1%	2,697	3,379	-20.2%	1,864	2,391	-22.0%	114,259	121,746	-6.1%
8	7,172	7,985	-10.2%	3,917	4,664	-16.0%	2,626	2,880	-8.8%	187,876	213,830	-12.1%
9	6,573	6,475	1.5%	3,965	3,636	9.1%	2,783	2,975	-6.5%	175,553	175,373	0.1%
10	2,667	2,778	-4.0%	2,209	2,390	-7.5%	1,585	1,704	-7.0%	76,055	80,264	-5.2%
11	10,952	12,715	-13.9%	8,483	10,245	-17.2%	6,299	7,080	-11.0%	308,554	361,735	-14.7%
12	3,261	2,964	10.0%							71,735	68,183	5.2%
16	2,784	3,157	-11.8%	2,223	2,271	-2.1%	1,239	1,402	-11.6%	77,327	87,292	-11.4%
17	4,849	5,145	-5.8%	2,983	3,327	-10.3%	2,038	2,232	-8.7%	129,737	140,567	-7.7%
19	2,311	2,372	-2.6%							50,833	54,567	-6.8%
21	2,257	2,345	-3.7%							49,662	53,936	-7.9%
22	5,044	4,947	2.0%	2,969	2,749	8.0%	2,060	2,066	-0.3%	134,053	133,048	0.8%
24	2,416	2,648	-8.8%	1,606	1,798	-10.7%	1,418	1,635	-13.3%	66,844	74,624	-10.4%
27	9,058	9,949	-9.0%	6,384	7,017	-9.0%	4,137	4,531	-8.7%	247,752	275,026	-9.9%
29	924	919	0.5%							20,332	21,143	-3.8%
31 - BUSWAY LOCAL	1,936	2,117	-8.6%	1,085	1,138	-4.6%	862	998	-13.6%	51,459	57,229	-10.1%
32	3,117	3,498	-10.9%	1,476	1,533	-3.7%	1,079	1,011	6.8%	80,264	90,631	-11.4%
33	2,033	2,176	-6.6%	1,200	1,493	-19.6%	820	851	-3.6%	54,005	59,430	-9.1%
34 - BUSWAY FLYER	1,745	1,970	-11.4%							38,387	45,308	-15.3%
35	2,691	3,230	-16.7%	951	1,090	-12.7%	634	619	2.3%	66,494	81,116	-18.0%
36	2,987	3,457	-13.6%	1,626	1,629	-0.2%	1,279	1,194	7.2%	78,967	90,805	-13.0%
37	4,010	4,357	-8.0%	2,946	3,232	-8.8%	2,243	2,558	-12.3%	111,932	123,370	-9.3%
38	7,309	8,077	-9.5%	5,713	6,682	-14.5%	4,355	5,220	-16.6%	206,773	233,388	-11.4%

METROBUS MONTHLY AND AVERAGE DAILY BOARDINGS BY ROUTE

Route	Average Weekday Oct-15	Average Weekday Oct-14	Percent Change 15 vs 14	Average Saturday Oct-15	Average Saturday Oct-14	Percent Change 15 vs 14	Average Sunday Oct-15	Average Sunday Oct-14	Percent Change 15 vs 14	Total Monthly Oct-15	Total Monthly Oct-14	Percent Change 15 vs 14
40	2,314	2,577	-10.2%	1,064	1,131	-5.9%	639	743	-14.1%	58,786	66,767	-12.0%
42	1,347	1,750	-23.0%	867	1,087	-20.2%	547	764	-28.3%	36,164	47,650	-24.1%
46 - LIBERTY CITY CONN.	45	64	-30.3%							982	1,472	-33.3%
48	280	292	-4.1%							6,154	6,712	-8.3%
51 - FLAGLER MAX	3,455	3,997	-13.6%							76,000	91,934	-17.3%
52	1,649	1,898	-13.1%	895	1,072	-16.6%	576	732	-21.4%	43,052	50,873	-15.4%
54	3,545	4,264	-16.9%	2,289	2,737	-16.4%	1,499	1,767	-15.2%	95,425	116,090	-17.8%
56	668	749	-10.8%							14,701	17,224	-14.6%
57	525	618	-15.0%							11,550	14,212	-18.7%
62	3,434	3,355	2.4%	2,146	2,216	-3.1%	1,350	1,369	-1.4%	91,677	91,493	0.2%
70	1,345	1,600	-15.9%	958	1,369	-30.0%	801	1,162	-31.1%	37,586	46,926	-19.9%
71	992	1,314	-24.5%	456	495	-7.8%	228	267	-14.6%	25,027	33,273	-24.8%
72	997	1,137	-12.3%	574	648	-11.4%	399	409	-2.6%	26,396	30,374	-13.1%
73	2,685	2,785	-3.6%	1,254	1,088	15.3%	644	602	7.0%	67,919	70,820	-4.1%
75	1,894	2,247	-15.7%	646	810	-20.2%	343	406	-15.6%	46,280	56,540	-18.1%
77	10,202	10,746	-5.1%	6,168	6,880	-10.3%	3,445	4,007	-14.0%	269,070	290,692	-7.4%
79	657	599	9.7%							14,457	13,777	4.9%
82 - WESTCHESTER CIRC.	63									1,396		
87	1,767	2,167	-18.5%	603	740	-18.5%	375	528	-29.1%	43,396	54,925	-21.0%
88	2,602	2,732	-4.8%	2,044	2,183	-6.4%	1,390	1,552	-10.4%	73,030	77,785	-6.1%
93 - BISCAYNE MAX	4,141	4,260	-2.8%							91,093	97,980	-7.0%
95 EXPRESS	2,270	2,397	-5.3%							49,938	55,135	-9.4%
99	1,970	2,279	-13.6%	1,223	1,285	-4.8%	808	1,017	-20.5%	52,686	61,630	-14.5%
101 - A	78	156	-50.2%	29	57	-48.9%	49	30	63.3%	2,049	3,933	-47.9%
102 - B	1,840	1,717	7.2%	1,051	976	7.6%	947	943	0.4%	49,520	47,162	5.0%
103 - C	3,638	3,875	-6.1%	3,028	3,367	-10.1%	2,178	2,385	-8.7%	103,880	112,142	-7.4%

METROBUS MONTHLY AND AVERAGE DAILY BOARDINGS BY ROUTE

Route	Average Weekday Oct-15	Average Weekday Oct-14	Percent Change 15 vs 14	Average Saturday Oct-15	Average Saturday Oct-14	Percent Change 15 vs 14	Average Sunday Oct-15	Average Sunday Oct-14	Percent Change 15 vs 14	Total Monthly Oct-15	Total Monthly Oct-14	Percent Change 15 vs 14
104	1,295	1,570	-17.5%	612	777	-21.3%	373	433	-14.0%	33,049	40,961	-19.3%
105 - E	1,609	1,764	-8.8%	928	1,087	-14.6%	700	910	-23.1%	42,835	48,551	-11.8%
107 - G	2,032	1,995	1.8%	1,403	1,553	-9.6%	1,072	1,161	-7.6%	56,003	56,751	-1.3%
108 - H	1,728	2,000	-13.6%	1,438	1,628	-11.7%	1,181	1,326	-10.9%	49,936	57,819	-13.6%
110 - J	3,020	3,393	-11.0%	2,319	2,594	-10.6%	1,661	1,919	-13.5%	84,665	96,083	-11.9%
112 - L	9,395	11,113	-15.5%	8,086	9,180	-11.9%	5,730	6,437	-11.0%	270,042	318,066	-15.1%
113 - M	1,055	995	6.1%	556	663	-16.2%	484	615	-21.2%	27,933	27,996	-0.2%
115	421	495	-15.0%							9,263	11,387	-18.7%
117	422	480	-12.0%							9,294	11,044	-15.8%
119 - S	11,684	12,868	-9.2%	9,568	10,273	-6.9%	9,068	9,415	-3.7%	341,151	374,725	-9.0%
120-SOUTH BEACH MAX	7,518	8,266	-9.0%	5,977	6,883	-13.2%	3,750	4,165	-10.0%	210,284	234,311	-10.3%
123-SOUTH BEACH LOCAL	3,242	3,431	-5.5%	2,724	3,130	-13.0%	2,063	2,619	-21.2%	93,202	101,914	-8.5%
132 TRI-RAIL (DORAL)	72	48	48.4%							1,583	1,115	42.0%
135	1,789	1,810	-1.2%	685	764	-10.3%	455	549	-17.0%	44,615	46,891	-4.9%
136	321	338	-4.9%							7,071	7,771	-9.0%
137 - WEST DADE CONN.	1,986	2,335	-14.9%	1,408	1,728	-18.5%	1,146	1,199	-4.4%	55,323	65,410	-15.4%
150 - MIAMI BEACH AIRPORT FLYER	1,940	1,550	25.1%	1,908	1,520	25.5%	1,861	1,621	14.8%	59,659	48,224	23.7%
183	3,924	4,463	-12.1%	2,529	2,845	-11.1%	1,768	2,026	-12.7%	106,048	122,120	-13.2%
195 DADE-BROWARD EXPRESS - BROWARD BLVD (1)	615	1,245								13,536	28,640	
196 DADE-BROWARD EXPRESS - SHERIDAN ST (2)	519									11,424		
200 - CUTLER BAY LOCAL	189	65	191.5%	132						4,827	780	518.8%
202 - LITTLE HAITI CONN.	237	242	-1.9%	142	120	18.2%	80	106	-24.9%	6,246	6,465	-3.4%
204 KILLIAN KAT	1,185	1,378	-14.0%							26,074	31,686	-17.7%
207 (7st) - LITTLE HAVANA CIRC.	1,816	1,625	11.7%							39,951	37,386	6.9%
208 (8st) - LITTLE HAVANA CIRC.	2,062	2,634	-21.7%							45,364	60,585	-25.1%
211 - OVERTOWN CIRC	119	154	-22.6%							2,623	3,544	-26.0%
212 - SWEETWATER CIRC	55	98	-43.9%							1,205	2,245	-46.3%

METROBUS MONTHLY AND AVERAGE DAILY BOARDINGS BY ROUTE

Route	Average Weekday Oct-15	Average Weekday Oct-14	Percent Change 15 vs 14	Average Saturday Oct-15	Average Saturday Oct-14	Percent Change 15 vs 14	Average Sunday Oct-15	Average Sunday Oct-14	Percent Change 15 vs 14	Total Monthly Oct-15	Total Monthly Oct-14	Percent Change 15 vs 14
238 EAST/WEST CONN.	531	674	-21.2%							11,676	15,500	-24.7%
246 - NIGHT OWL	100	97	2.5%	121	105	15.4%	108	69	57.7%	3,234	2,934	10.2%
249 - COCONUT GROVE CIRC.	1,304	1,414	-7.8%	796	925	-13.9%	572	660	-13.3%	34,951	38,861	-10.1%
252 - CORAL REEF MAX	1,091	1,173	-7.0%	332	535	-38.0%	311	326	-4.6%	26,908	30,419	-11.5%
254 - BROWNSVILLE CIRC.	34	37	-7.6%							750	849	-11.7%
267 - LUDLAM LIMITED	133	163	-18.8%							2,916	3,753	-22.3%
272 SUNSET KAT	620	671	-7.6%							13,640	15,425	-11.6%
277 - 7th AVENUE MAX	932	1,004	-7.1%							20,507	23,089	-11.2%
286 - NORTH POINTE CIRC.	121	146	-17.5%	94	102	-7.0%				3,125	3,766	-17.0%
287 - SAGA BAY MAX	400	452	-11.5%							8,807	10,402	-15.3%
288 - KENDALL CRUISER	875	1,066	-17.9%							19,257	24,524	-21.5%
297 - 27th AVENUE ENHANCED BUS	2,010	2,052	-2.0%							44,228	47,189	-6.3%
301 DADE-MONROE EXPRESS	1,016	765	32.9%	994	774	28.4%	857	752	14.0%	30,758	23,690	29.8%
302 CARD SOUND EXPRESS	86	85	2.2%	60	88	-32.3%	48	82	-41.3%	2,392	2,626	-8.9%
338 - WEEKEND EXPRESS				224	227	-1.1%	232	210	10.6%	2,050	1,747	17.3%
344	109	171	-36.2%							2,405	3,939	-38.9%
500	66	64	2.3%	86	75	14.9%	56	83	-32.7%	2,100	2,109	-0.4%
12/21 WEEKEND INTERL.				3,091	3,161	-2.2%	2,478	2,479	0.0%	25,369	22,561	12.4%
115/117 WEEKEND INTERL.				435	559	-22.1%	370	471	-21.5%	3,654	4,119	-11.3%
207/208 WEEKEND INTERL.				3,252	3,501	-7.1%	2,545	2,756	-7.7%	26,439	25,027	5.6%
GREEN HILLS SHUTTLE	3	4	-14.3%							12	14	-14.3%
KINGS CREEK SHUTTLE	11	13	-17.2%							53	64	-17.2%
SIERRA LAKES SHUTTLE	22	20	6.9%							109	102	6.9%
ROBERT SHARP SHUTTLE	9	12	-20.3%							37	58	-36.2%
AHEPA SHUTTLE	39	20	93.0%							193	100	93.0%
FEDERATION GARDENS SHUTTLE				16	20	-19.0%				82	81	1.2%
Total	225,963	246,340	-8.3%	137,799	152,577	-9.7%	99,967	110,854	-9.8%	6,058,615	6,717,604	-9.8%

- (1) The Broward Blvd - 195 and Sheridan St - 196 distinct route numbering began with the June 2015 lineup; the combined 195/196 October 2015 average weekday ridership is 8.9% lower than for October 2014.
(2) Raw NextFare boardings data is henceforth the source for Cutler Bay Local ridership.
(3) Excludes shuttles and those routes which were not run both years.

METROBUS HOLIDAY BOARDINGS BY ROUTE

October 12, 2015

Columbus Day				Columbus Day				Columbus Day			
ROUTES	Oct 13, 2014	Oct 12, 2015	Pct Delta	ROUTES	Oct 13, 2014	Oct 12, 2015	Pct Delta	ROUTES	Oct 13, 2014	Oct 12, 2015	Pct Delta
1	872	466	-46.6%	52	1,764	1,610	-8.7%	123	3,353	2,773	-17.3%
2	2,952	2,518	-14.7%	54	3,698	3,392	-8.3%	132	33	158	378.8%
3	8,144	6,670	-18.1%	56	620	611	-1.5%	135	1,524	2,039	33.8%
6	835	620	-25.7%	57	569	482	-15.3%	136	343	283	-17.5%
7	4,276	3,834	-10.3%	62	2,862	2,611	-8.8%	137	2,241	2,056	-8.3%
8	7,798	6,030	-22.7%	70	1,352	1,267	-6.3%	150	1,557	1,998	28.3%
9	5,954	6,334	6.4%	71	1,229	967	-21.3%	183	4,305	3,957	-8.1%
10	2,615	2,215	-15.3%	72	1,076	973	-9.6%	195	855	333	-61.1%
11	11,959	9,395	-21.4%	73	2,681	2,419	-9.8%	202	229	233	1.7%
12	2,695	2,699	0.1%	75	2,239	1,932	-13.7%	204	1,064	1,014	-4.7%
16	2,973	2,488	-16.3%	77	10,255	10,521	2.6%	207	1,275	1,738	36.3%
17	5,152	4,946	-4.0%	79	619	553	-10.7%	208	2,222	1,534	-31.0%
19	2,582	2,316	-10.3%	87	1,952	1,681	-13.9%	211	127	0	-100.0%
21	2,210	2,031	-8.1%	88	2,371	2,737	15.4%	238	597	379	-36.5%
22	4,862	4,928	1.4%	93	3,735	4,192	12.2%	246	109	103	-5.5%
24	2,766	2,501	-9.6%	95	1,404	1,358	-3.3%	249	1,089	1,319	21.1%
27	9,596	9,083	-5.3%	99	2,363	1,905	-19.4%	252	1,059	1,008	-4.8%
29	841	897	6.7%	101	106	67	-36.8%	254	54	31	-42.6%
31	1,653	1,840	11.3%	102	1,807	1,902	5.3%	267	137	99	-27.7%
32	3,473	2,249	-35.2%	103	3,756	3,691	-1.7%	272	587	541	-7.8%
33	2,146	1,853	-13.7%	104	1,605	1,271	-20.8%	277	904	858	-5.1%
34	1,630	1,344	-17.5%	105	1,766	1,629	-7.8%	286	130	126	-3.1%
35	3,174	2,622	-17.4%	107	1,830	2,075	13.4%	287	341	340	-0.3%
36	3,541	2,779	-21.5%	108	1,926	1,691	-12.2%	288	697	755	8.3%
37	4,324	4,173	-3.5%	110	3,337	3,085	-7.6%	297	2,163	1,782	-17.6%
38	7,348	6,270	-14.7%	112	10,651	9,727	-8.7%	301	742	968	30.5%
40	2,403	2,088	-13.1%	113	912	973	6.7%	302	90	89	-1.1%
42	1,638	1,271	-22.4%	115	448	439	-2.0%	344	160	109	-31.9%
46	71	63	-11.3%	117	518	406	-21.6%	500	68	52	-23.5%
48	285	255	-10.5%	119	13,015	10,854	-16.6%				
51	3,982	3,326	-16.5%	120	7,256	7,228	-0.4%				
								Total (1)	227,065	206,026	-9.3%

(1) Excludes shuttles and those routes which were not run both years

AVERAGE WEEKDAY BUS RIDERSHIP BY SERVICE TYPE

Boardings by Service Type and Route	Average Weekday Oct-15	Average Weekday Oct-14	Percent Change 15 vs 14	Average Saturday Oct-15	Average Saturday Oct-14	Percent Change 15 vs 14	Average Sunday Oct-15	Average Sunday Oct-14	Percent Change 15 vs 14	Total Monthly Oct-15	Total Monthly Oct-14	Percent Change 15 vs 14
Express Routes												
34-BUSWAY FLYER	1,745	1,970	-11.4%							38,387	45,308	-15.3%
95-EXPRESS	2,270	2,397	-5.3%							49,938	55,135	-9.4%
150-MIAMI BEACH AIRPORT FLYER	1,940	1,550	25.2%	1,908	1,520	25.5%	1,861	1,621	14.8%	59,659	48,224	23.7%
195	615	1,245								13,536	28,640	
196	519									11,424		
204 KAT-KILLIAN	1,185	1,378	-14.0%							26,074	31,686	-17.7%
272 KAT-SUNSET	620	671	-7.6%							13,640	15,425	-11.6%
288 KENDALL CRUISER	875	1,066	-17.9%							19,257	24,524	-21.5%
Subtotal Express Routes	9,770	10,277	-4.9%	1,908	1,520	25.5%	1,861	1,621	14.8%	231,915	248,942	-6.8%
Percentage of All Bus Routes	4.3%	4.2%		1.4%	1.0%		1.9%	1.5%		3.8%	3.7%	
Contracted Express												
301-DADE MONROE EXPRESS	1,016	765	32.9%	994	774	28.4%	857	752	14.0%	30,758	23,690	29.8%
302-CARD SOUND EXPRESS	86	85	1.7%	60	88	-32.3%	48	82	-41.2%	2,392	2,626	-8.9%
Subtotal Contracted Express Routes	1,103	850	29.7%	1,053	862	22.2%	906	834	8.6%	33,150	26,316	26.0%
Percentage of All Bus Routes	0.5%	0.3%		0.8%	0.6%		0.9%	0.8%		0.5%	0.4%	
Limited Stop												
51-FLAGLER MAX	3,455	3,997	-13.6%							76,000	91,934	-17.3%
93 - BISCAYNE MAX	4,141	4,260	-2.8%							91,093	97,980	-7.0%
120-SOUTH BEACH MAX	7,518	8,266	-9.0%	5,977	6,883	-13.2%	3,750	4,165	-10.0%	210,284	234,311	-10.3%
252-CORAL REEF MAX	1,091	1,173	-7.0%	332	535	-38.0%	311	326	-4.8%	26,908	30,419	-11.5%
267-LUDLAM LIMITED	133	163	-18.7%							2,916	3,753	-22.3%
277-7TH AVENUE MAX	932	1,004	-7.2%							20,507	23,089	-11.2%
287-SAGA BAY MAX	400	452	-11.4%							8,807	10,402	-15.3%
297-27TH AVENUE ENHANCED BUS	2,010	2,052	-2.0%							44,228	47,189	-6.3%
Subtotal Limited Stop Routes	19,680	21,367	-7.9%	6,309	7,418	-15.0%	4,060	4,491	-9.6%	480,743	539,077	-10.8%
Percentage of All Bus Routes	8.7%	8.7%		4.6%	4.9%		4.1%	4.1%		7.9%	8.0%	

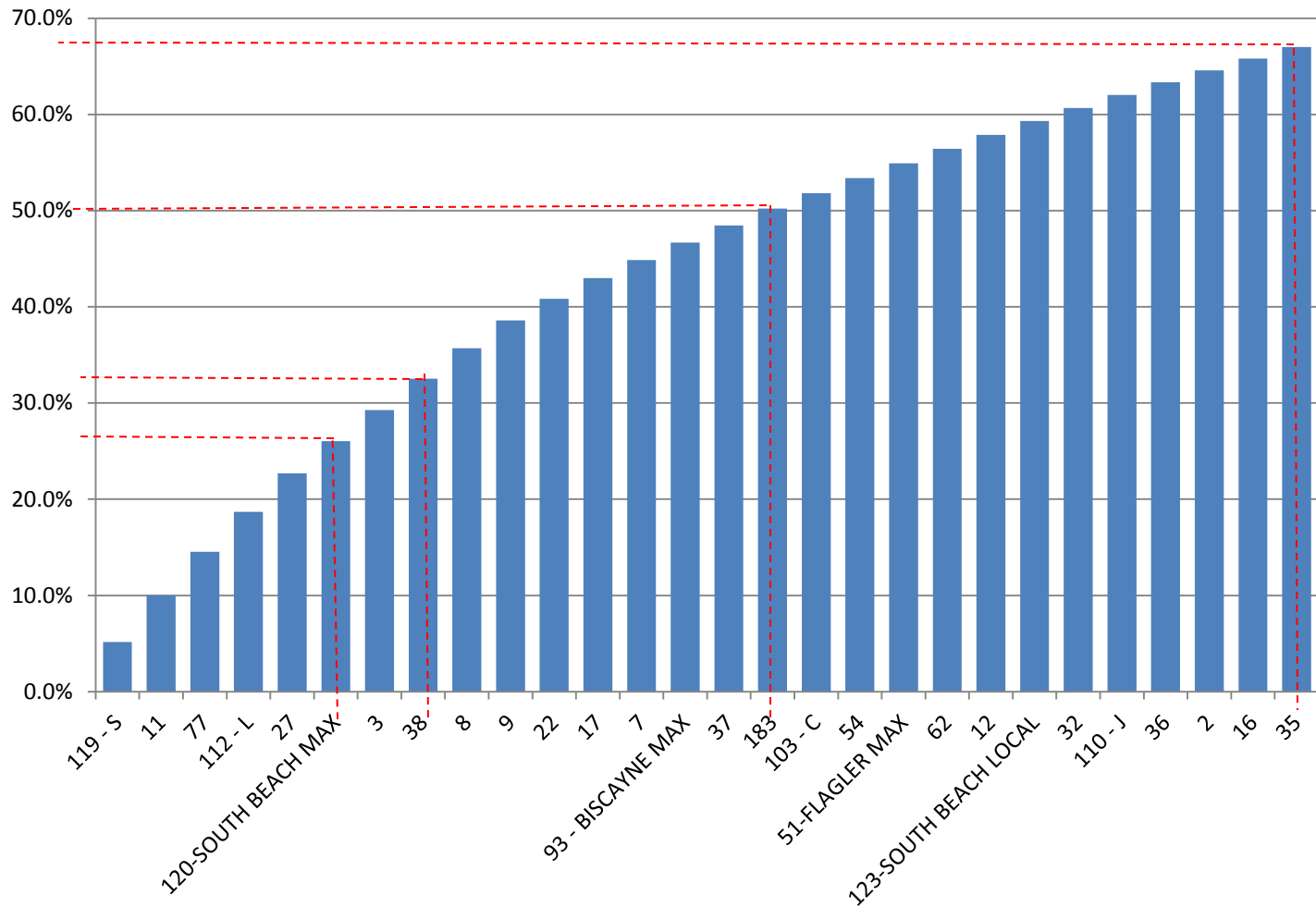
(1) Excludes shuttles and those routes which were not run both years. As noted previously, The Broward Blvd - 195 and Sheridan St - 196 distinct route numbering began with the June 2015 lineup; the combined 195/196 October 2015 average weekday ridership is 8.9% lower than for October 2014.

AVERAGE WEEKDAY BUS RIDERSHIP BY SERVICE TYPE

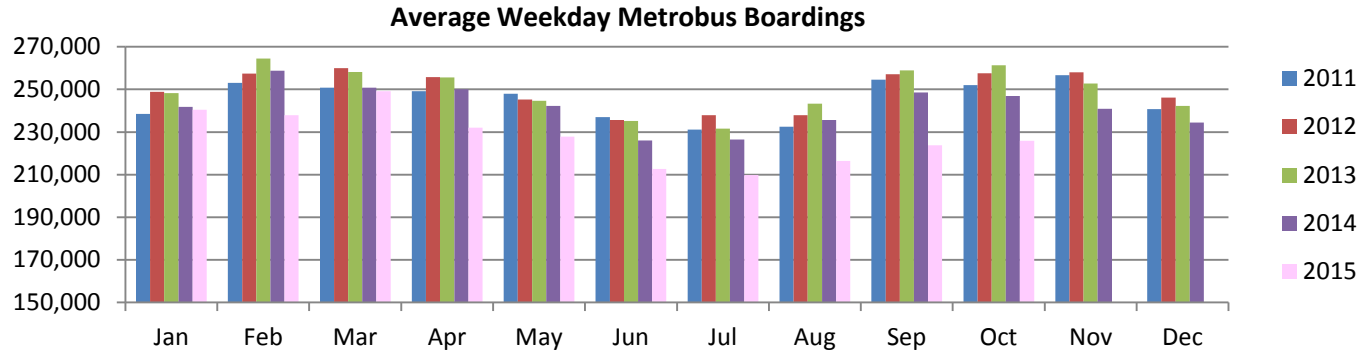
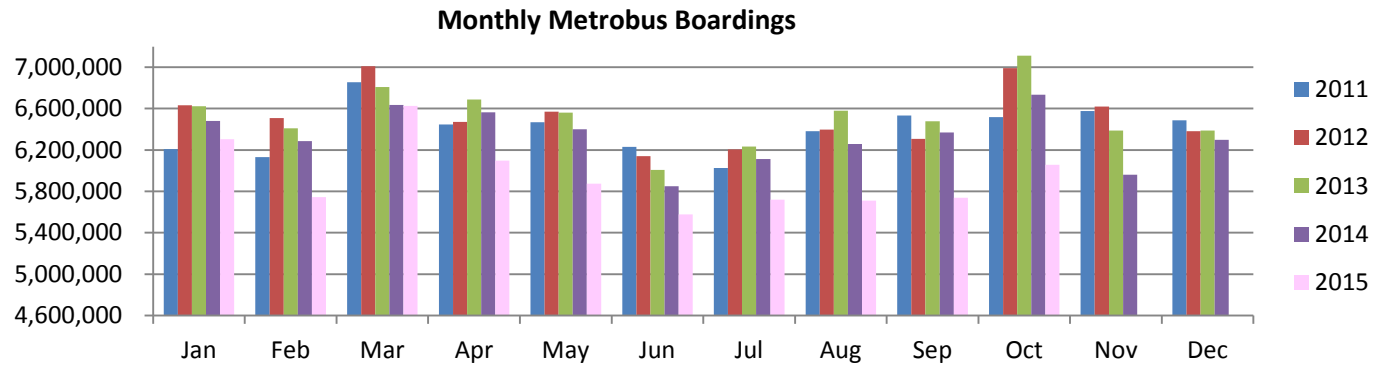
Boardings by Service Type and Route	Average Weekday Oct-15	Average Weekday Oct-14	Percent Change 15 vs 14	Average Saturday Oct-15	Average Saturday Oct-14	Percent Change 15 vs 14	Average Sunday Oct-15	Average Sunday Oct-14	Percent Change 15 vs 14	Total Monthly Oct-15	Total Monthly Oct-14	Percent Change 15 vs 14
Circulators												
82 - WESTCHESTER CIRC	63									1,396		
123-SOUTH BEACH LOCAL	3,242	3,431	-5.5%	2,724	3,130	-13.0%	2,063	2,619	-21.2%	93,202	101,914	-8.5%
200-CUTLER BAY LOCAL	189	65	191.5%	132						4,827	780	518.8%
211-OVERTOWN CIRC	119	154	-22.6%							2,623	3,544	-26.0%
212-SWEETWATER CIRC	55	98	-44.1%							1,205	2,245	-46.3%
249-COCONUT GROVE CIRC	1,304	1,414	-7.8%	796	925	-13.9%	572	660	-13.3%	34,951	38,861	-10.1%
254-BROWNSVILLE CIRC	34	37	-7.9%							750	849	-11.7%
286-NORTH POINTE CIRC	121	146	-17.4%	94	102	-7.5%				3,125	3,766	-17.0%
Subtotal Circulators	5,127	5,345	-4.1%	3,747	4,157	-9.9%	2,635	3,279	-19.6%	142,079	151,959	-6.5%
Percentage of All Bus Routes	2.3%	2.2%		2.7%	2.7%		2.6%	3.0%		2.3%	2.3%	
Free Route												
132 -TRI-RAIL DORAL	72	48	49.9%							1,583	1,115	42.0%
Percentage of All Bus Routes	0.0%	0.0%								0.0%	0.0%	
Lifelines & Shuttles												
GREEN HILLS SHUTTLE	3	4	-25.0%							12	14	-14.3%
KINGS CREEK SHUTTLE	11	13	-18.5%							53	64	-17.2%
SIERRA LAKES SHUTTLE	22	20	9.0%							109	102	6.9%
ROBERT SHARP SHUTTLE	9	12	-22.9%							37	58	-36.2%
AHEPA SHUTTLE	39	20	93.0%							193	100	93.0%
FEDERATION GARDENS SHUTTLE				16	20	-18.0%				82	81	1.2%
Subtotal Lifeline & Shuttle Routes	83	69	20.7%	16	20	-18.0%				486	419	16.0%
Percentage of All Bus Routes	0.0%	0.0%		0.0%	0.0%					0.0%	0.0%	
All Other (Regular) Routes	190,128	208,385	-8.8%	124,766	138,600	-10.0%	90,506	100,630	-10.1%	5,168,659	5,749,776	-10.1%
Percentage of All Bus Routes	84.1%	84.6%		90.5%	90.8%		90.5%	90.8%		85.3%	85.6%	
Total Bus System (1)	225,963	246,341	-8.3%	137,799	152,577	-9.7%	99,967	110,855	-9.8%	6,058,615	6,717,604	-9.8%

(1) Excludes shuttles and those routes which were not run both years. As noted previously, The Broward Blvd - 195 and Sheridan St - 196 distinct route numbering began with the June 2015 lineup; the combined 195/196 October 2015 average weekday ridership is 8.9% lower than for October 2014.

Bus - Cumulative Percentage Average Weekday Ridership Share
Top 1/4, 1/3, 1/2 and 2/3 of Routes



TOTAL MONTHLY AND AVERAGE WEEKDAY RIDERSHIP YEAR OVER YEAR COMPARISON CHARTS – METROBUS



**“TOP 5 / BOTTOM 5” BUS ROUTES AVERAGE WEEKDAY RIDERSHIP PERFORMANCE
YEAR OVER YEAR COMPARISONS**

Route	Oct-15	Oct-14	Absolute Delta	Percent Delta
150-MIAMI BEACH AIRPORT FLYER	1,940	1,550	389	25.1%
12	3,261	2,964	296	10.0%
301-DADE MONROE EXPRESS	1,016	765	252	32.9%
207(7st)-LITTLE HAVANA CIRC	1,816	1,625	190	11.7%
102 - B	1,840	1,717	123	7.2%
11	10,952	12,715	-1,763	-13.9%
112 - L	9,395	11,113	-1,718	-15.5%
119 - S	11,684	12,868	-1,185	-9.2%
3	7,349	8,256	-906	-11.0%
27	9,058	9,949	-891	-9.0%

(1) Averages rounded to the nearest boarding

METROBUS PARKING PATRONAGE SUMMARY

October 2015

PARK-RIDE LOT	ACTUAL AVAILABLE SPACES	ACTUAL OCCUPANCY	PERCENT OCCUPANCY
BUSWAY / SW 152nd Street	200	200	100%
BUSWAY/SW 168th Street	149	149	100%
BUSWAY/SW 244th Street	95	95	100%
BUSWAY/SW 296th Street	139	118	85%
BUSWAY/SW 344th Street	248	138	56%
CORAL REEF DRIVE 117 / TURNPIKE	95	45	47%
GOLDEN GLADES-EAST LOT	535	172	32%
GOLDEN GLADES-WEST	1,007	713	71%
HAMMOCKS TOWN CENTER	50	50	100%
TARGET (BUSWAY / SW 112nd Ave)	450	252	56%
KENDALL Drive / SW 150th Ave	109	13	12%
WEST KENDALL TRANSIT TEAM (KENDALL / SW 162nd Ave)	40	30	75%
MIAMI GARDENS Drive / NW 73rd Ave	136	40	29%
TOTAL	3,253	2,015	62%

Busway / SW 344th Street added June 2015

Metrorail



METRORAIL MONTHLY AND AVERAGE DAILY BOARDINGS BY STATION

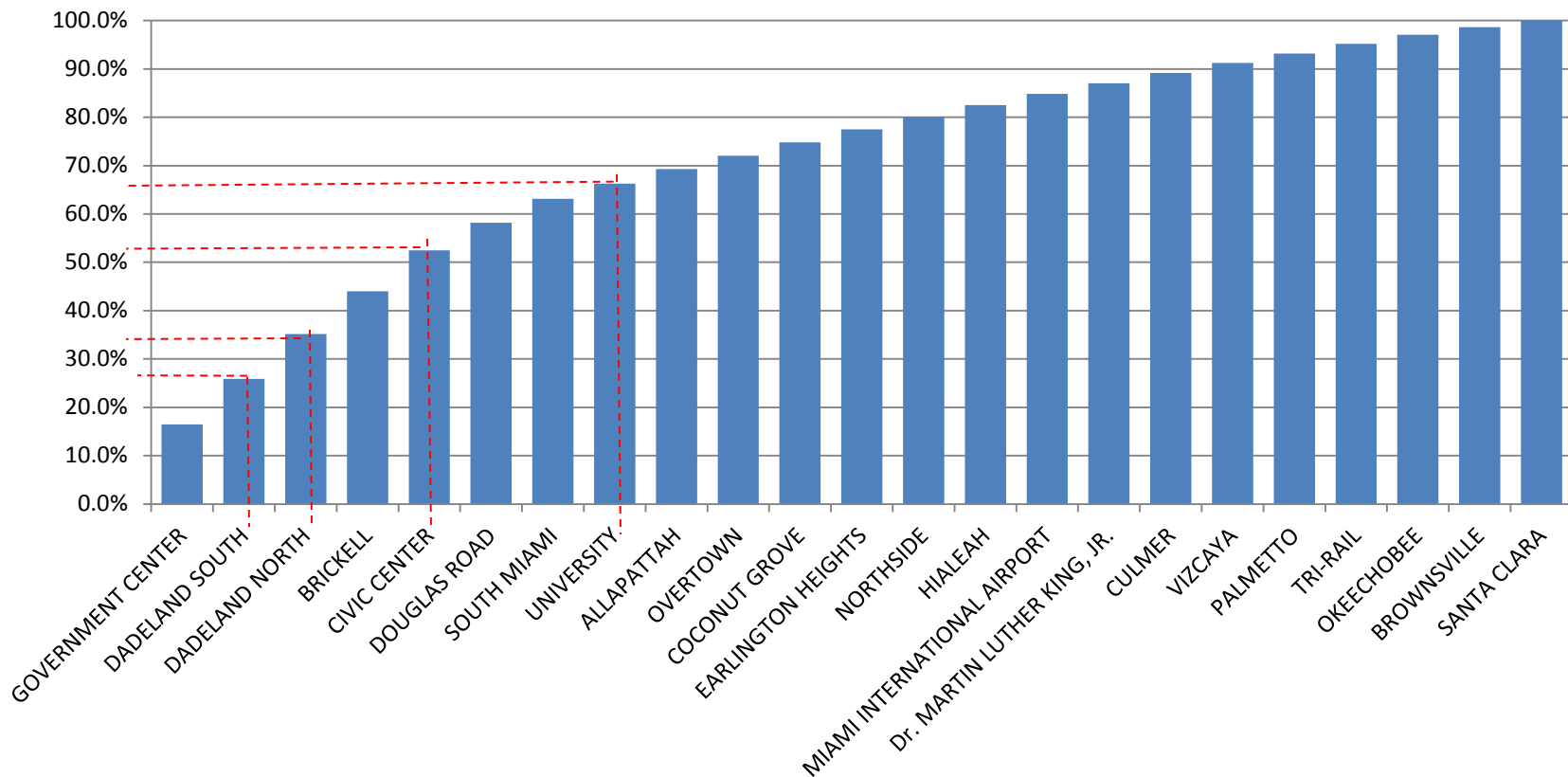
	Average Weekday	Average Weekday	Percent Change	Average Saturday	Average Saturday	Percent Change	Average Sunday	Average Sunday	Percent Change	Total Monthly	Total Monthly	Percent Change
STATIONS	Oct-15	Oct-14	15 vs 14	Oct-15	Oct-14	15 vs 14	Oct-15	Oct-14	15 vs 14	Oct-15	Oct-14	15 vs 14
ALLAPATTAH	2,296	2,216	3.6%	1,407	1,298	8.4%	947	917	3.2%	61,202	59,497	2.9%
BRICKELL	6,769	6,225	8.7%	2,887	2,787	3.6%	1,873	1,949	-3.9%	169,534	161,101	5.2%
BROWNSVILLE	1,216	1,181	3.0%	755	835	-9.6%	554	514	7.6%	32,634	32,441	0.6%
CIVIC CENTER	6,532	6,370	2.5%	1,099	1,140	-3.5%	815	813	0.2%	150,862	152,765	-1.2%
COCONUT GROVE	2,138	2,218	-3.6%	1,213	1,329	-8.7%	847	917	-7.6%	56,327	59,772	-5.8%
CULMER	1,647	1,686	-2.3%	831	874	-4.8%	622	637	-2.4%	42,765	44,719	-4.4%
DADELAND NORTH	7,169	7,425	-3.4%	2,661	3,009	-11.6%	1,710	1,867	-8.4%	176,399	188,632	-6.5%
DADELAND SOUTH	7,229	8,000	-9.6%	2,973	3,538	-16.0%	2,045	2,474	-17.3%	180,368	206,604	-12.7%
DOUGLAS ROAD	4,372	4,455	-1.8%	1,753	1,925	-8.9%	1,230	1,379	-10.8%	109,308	115,190	-5.1%
DR. MARTIN LUTHER KING, JR.	1,682	1,575	6.8%	926	894	3.6%	641	555	15.5%	43,936	41,791	5.1%
EARLINGTON HEIGHTS	2,074	1,935	7.2%	1,203	1,148	4.8%	884	881	0.3%	54,949	52,431	4.8%
GOVERNMENT CENTER	12,643	12,466	1.4%	5,387	6,114	-11.9%	3,370	3,663	-8.0%	315,492	322,788	-2.3%
HIALEAH	1,893	1,798	5.3%	977	1,015	-3.8%	661	684	-3.4%	48,961	47,901	2.2%
MIAMI INTERNATIONAL AIRPORT	1,808	1,576	14.8%	1,391	1,276	9.0%	1,438	1,356	6.0%	52,681	46,764	12.7%
NORTHSIDE	1,936	1,659	16.7%	1,215	1,053	15.4%	836	663	26.1%	51,707	44,694	15.7%
OKEECHOBEE	1,457	1,427	2.1%	484	554	-12.7%	293	302	-3.1%	35,435	35,954	-1.4%
OVERTOWN / ARENA	2,144	2,113	1.4%	663	674	-1.7%	529	540	-2.0%	51,809	52,604	-1.5%
PALMETTO	1,518	1,638	-7.4%	447	526	-15.1%	191	241	-20.6%	36,202	40,489	-10.6%
SANTA CLARA	1,043	923	13.0%	537	530	1.4%	328	332	-1.1%	26,761	24,590	8.8%
SOUTH MIAMI	3,815	3,777	1.0%	1,671	1,944	-14.0%	1,097	1,239	-11.5%	95,959	98,846	-2.9%
TRI-RAIL	1,508	1,572	-4.1%	804	868	-7.4%	602	767	-21.5%	39,486	42,614	-7.3%
UNIVERSITY	2,405	2,474	-2.8%	676	773	-12.6%	457	542	-15.7%	57,941	61,990	-6.5%
VIZCAYA	1,564	1,594	-1.9%	680	796	-14.6%	480	543	-11.6%	39,634	41,920	-5.5%
TOTAL	76,858	76,303	0.73%	32,639	34,899	-6.48%	22,448	23,775	-5.58%	1,930,352	1,976,097	-2.31%

METRORAIL HOLIDAY BOARDINGS BY STATION

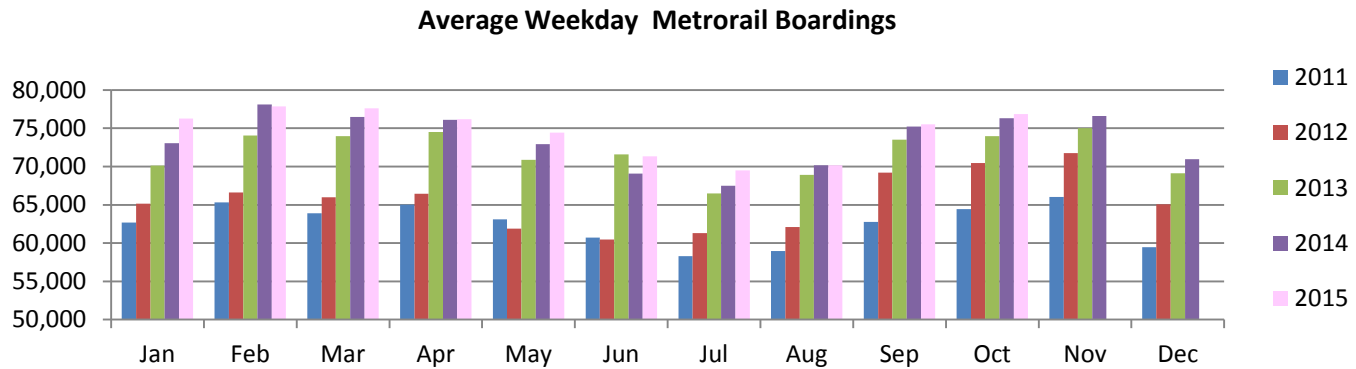
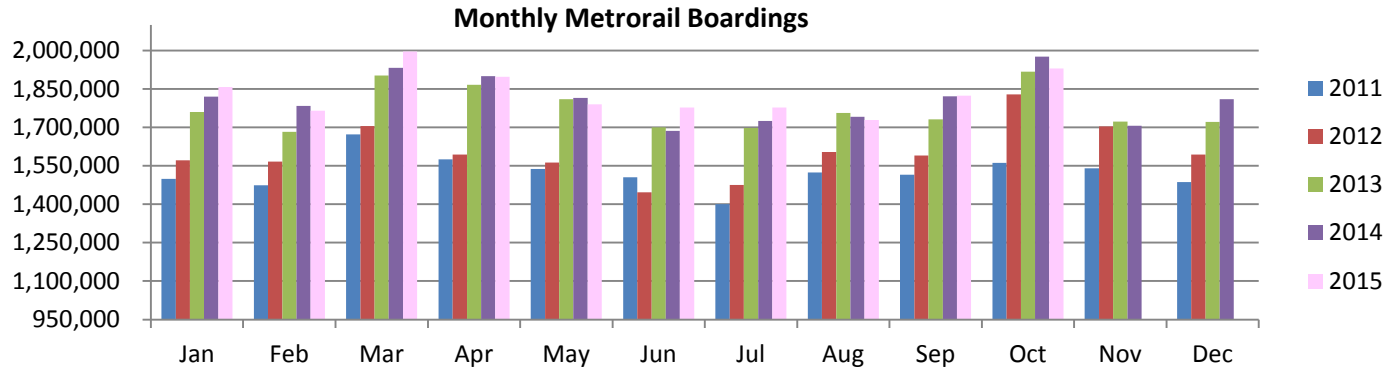
October 12, 2015

	Columbus Day	Columbus Day	Percent Change
STATIONS	Oct-15	Oct-14	15 vs 14
ALLAPATTAH	2,171	1,894	14.6%
BRICKELL	5,462	5,198	5.1%
BROWNSVILLE	1,117	1,067	4.7%
CIVIC CENTER	4,932	4,807	2.6%
COCONUT GROVE	1,978	2,003	-1.2%
CULMER	1,535	1,576	-2.6%
DADELAND NORTH	5,697	5,777	-1.4%
DADELAND SOUTH	5,513	6,550	-15.8%
DOUGLAS ROAD	3,801	3,976	-4.4%
DR. MARTIN LUTHER KING, JR.	1,431	1,354	5.7%
EARLINGTON HEIGHTS	1,843	1,746	5.6%
GOVERNMENT CENTER	9,569	9,430	1.5%
HIALEAH	1,682	1,561	7.8%
MIAMI INTERNATIONAL AIRPORT	1,996	1,570	27.1%
NORTHSIDE	1,627	1,334	22.0%
OKEECHOBEE	1,247	1,138	9.6%
OVERTOWN / ARENA	1,364	1,259	8.3%
PALMETTO	1,336	1,377	-3.0%
SANTA CLARA	862	839	2.7%
SOUTH MIAMI	3,106	3,009	3.2%
TRI-RAIL	1,379	1,479	-6.8%
UNIVERSITY	2,228	2,311	-3.6%
VIZCAYA	1,473	1,489	-1.1%
TOTAL	63,349	62,744	1.0%

Metrorail - Cumulative Percentage Ridership Share **Top 1/4, 1/3, 1/2 and 2/3 of Stations**



TOTAL MONTHLY AND AVERAGE WEEKDAY RIDERSHIP YEAR OVER YEAR COMPARISON CHARTS – METRORAIL



**“TOP 5 / BOTTOM 5” RAIL STATIONS AVERAGE WEEKDAY RIDERSHIP PERFORMANCE
YEAR OVER YEAR COMPARISONS**

Station	Oct-15	Oct-14	Absolute Delta (1)	Percent Delta
BRICKELL	6,769	6,225	544	8.7%
NORTHSIDE	1,936	1,659	277	16.7%
MIAMI INTERNATIONAL AIRPORT	1,808	1,576	233	14.8%
GOVERNMENT CENTER	12,643	12,466	177	1.4%
CIVIC CENTER	6,532	6,370	162	2.5%
DADELAND SOUTH	7,229	8,000	-771	-9.6%
DADELAND NORTH	7,169	7,425	-256	-3.4%
PALMETTO	1,518	1,638	-121	-7.4%
DOUGLAS ROAD	4,372	4,455	-82	-1.8%
COCONUT GROVE	2,138	2,218	-80	-3.6%

(1) Averages rounded to the nearest boarding

METRORAIL PARKING PATRONAGE SUMMARY
October 2015

PARK-RIDE LOT	ACTUAL AVAILABLE SPACES	ACTUAL OCCUPANCY	PERCENT OCCUPANCY
DADELAND SOUTH	1,290	1,240	96%
DADELAND NORTH	1,963	1,939	99%
SOUTH MIAMI	1,729	897	52%
UNIVERSITY	230	209	91%
DOUGLAS ROAD	220	214	97%
COCONUT GROVE	204	101	50%
VIZCAYA	120	68	57%
CULMER	95	2	2%
SANTA CLARA	61	50	82%
ALLAPATTAH	74	19	25%
EARLINGTON HEIGHTS	361	117	32%
BROWNSVILLE	100	20	20%
DR. MARTIN LUTHER KING JR. (MDT)	62	49	79%
DR. MARTIN LUTHER KING JR. (GARAGE)	631	211	33%
NORTHSIDE	197	83	42%
HIALEAH	338	97	29%
OKEECHOBEE	1,398	335	24%
PALMETTO	700	374	53%
TOTAL	9,773	6,023	62%

Note: No parking at Brickell, Government Center, Overtown, Civic Center, and Tri-Rail stations.

Metromover

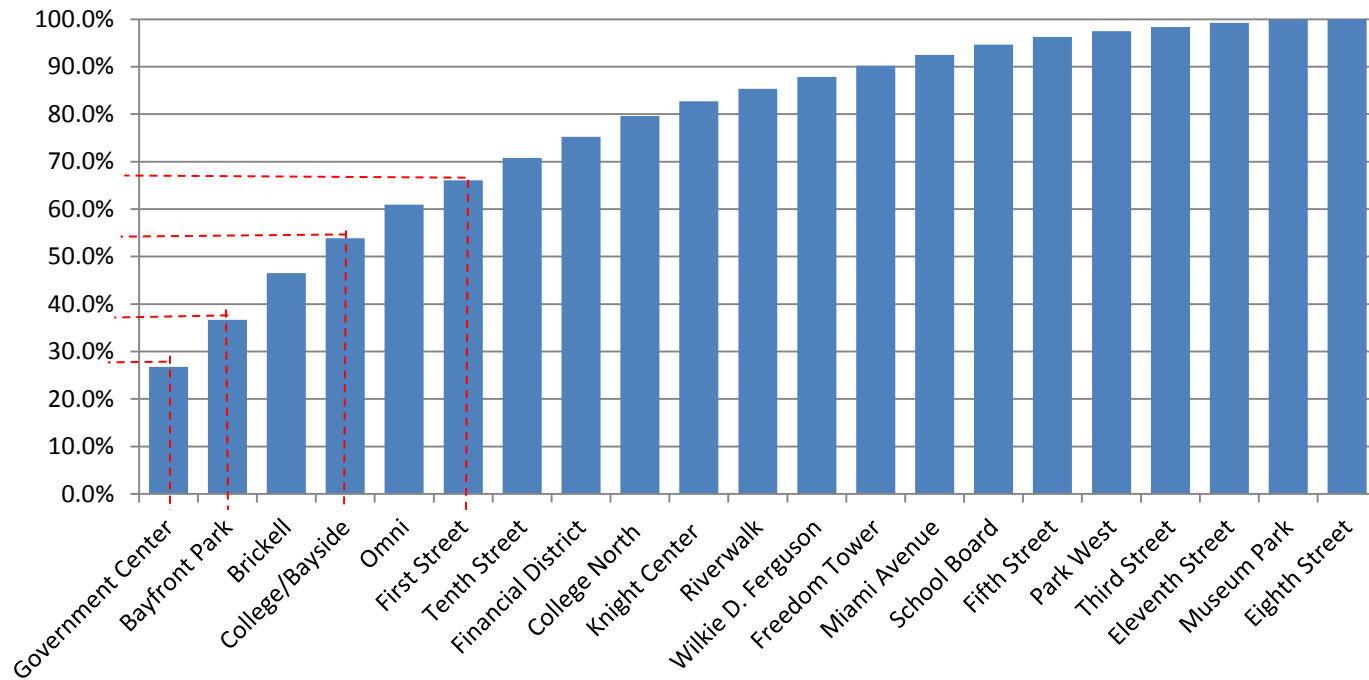


METROMOVER MONTHLY AND AVERAGE DAILY BOARDINGS BY STATION

	Average Weekday	Average Weekday	Percent Change	Average Saturday	Average Saturday	Percent Change	Average Sunday	Average Sunday	Percent Change	Columbus Day	Columbus Day	Percent Change	Total Monthly	Total Monthly	Percent Change
STATIONS	Oct-15	Oct-14	15 vs 14	Oct-15	Oct-14	15 vs 14	Oct-15	Oct-14	15 vs 14	10/12/15	10/13/14	15 vs 14	Oct-15	Oct-14	15 vs 14
School Board	758	690	9.9%	497	589	-15.5%	602	625	-3.7%	656	624	5.1%	21,468	20,657	3.9%
Omni	2,491	2,810	-11.3%	1,490	2,180	-31.6%	1,492	1,634	-8.7%	2,218	2,646	-16.2%	67,946	79,715	-14.8%
Museum Park	247	150	65.1%	341	184	85.2%	161	135	19.7%	121	142	-14.8%	7,665	4,713	62.6%
Eleventh Street	294	314	-6.3%	193	240	-19.2%	176	191	-7.6%	285	316	-9.8%	8,141	8,953	-9.1%
Park West	409	457	-10.5%	318	488	-34.7%	319	307	4.1%	452	356	27.0%	11,903	13,585	-12.4%
Freedom Tower	830	599	38.6%	583	714	-18.4%	524	334	57.0%	707	342	106.7%	23,147	17,703	30.8%
Government Center	9,362	9,195	1.8%	2,095	2,856	-26.6%	1,799	1,961	-8.3%	3,190	3,039	5.0%	217,455	224,594	-3.2%
Miami Avenue	797	864	-7.7%	398	519	-23.4%	315	327	-3.7%	581	707	-17.8%	20,562	23,092	-11.0%
Third Street	322	327	-1.7%	187	241	-22.3%	206	202	2.1%	250	244	2.5%	8,765	9,214	-4.9%
Knight Center	1,074	915	17.4%	402	516	-22.1%	300	334	-10.0%	792	663	19.5%	26,566	24,193	9.8%
Bayfront Park	3,472	3,182	9.1%	3,631	2,863	26.8%	1,745	1,635	6.7%	2,810	2,796	0.5%	100,848	90,790	11.1%
First Street	1,773	1,713	3.5%	1,055	1,403	-24.8%	1,169	1,111	5.3%	1,536	1,581	-2.8%	48,729	49,326	-1.2%
College/Bayside	2,562	2,494	2.7%	1,366	1,868	-26.9%	1,298	1,511	-14.1%	2,474	2,525	-2.0%	68,294	70,901	-3.7%
College North	1,534	1,594	-3.7%	373	565	-33.9%	354	435	-18.5%	1,289	1,427	-9.7%	36,781	40,482	-9.1%
Wilkie D. Ferguson	871	887	-1.8%	429	648	-33.8%	349	496	-29.6%	639	726	-12.0%	22,473	24,807	-9.4%
Riverwalk	923	756	22.1%	437	513	-14.8%	415	354	17.5%	784	609	28.7%	24,015	20,711	16.0%
Fifth Street	573	935	-38.7%	208	430	-51.7%	167	290	-42.2%	450	835	-46.1%	14,195	24,285	-41.5%
Eighth Street	28												583		
Tenth Street	1,657	1,463	13.2%	772	977	-21.0%	646	668	-3.3%	1,322	1,224	8.0%	42,556	39,995	6.4%
Brickell	3,433	3,128	9.8%	1,592	1,926	-17.4%	1,552	1,506	3.1%	2,445	2,384	2.6%	88,702	84,920	4.5%
Financial District	1,553	1,389	11.8%	569	643	-11.5%	505	463	9.2%	1,105	1,069	3.4%	38,585	36,045	7.0%
TOTAL	34,962	33,860	3.3%	16,936	20,360	-16.8%	14,096	14,514	-2.9%	24,106	24,255	-0.6%	899,379	908,681	-1.0%

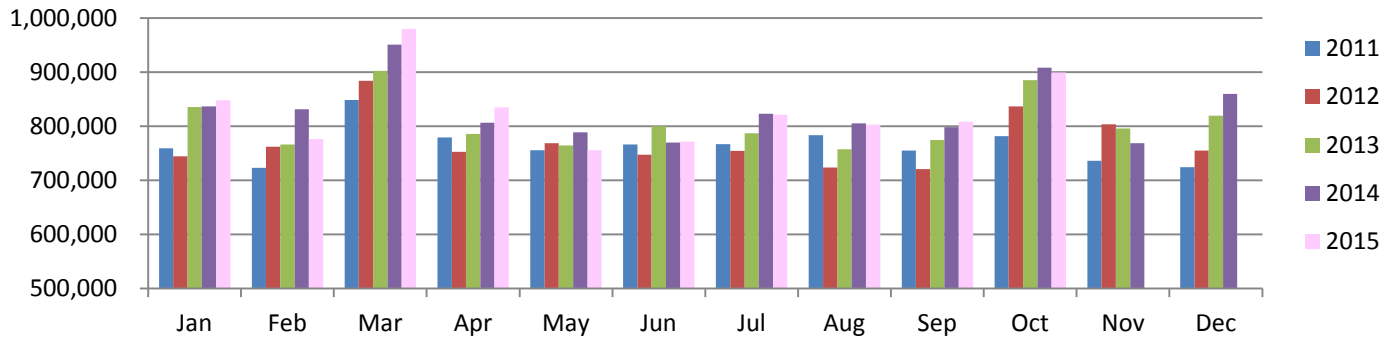
Note: Eighth Street station was closed 30 days this month due to construction. Bicentennial Park station was reopened as Museum Park in December 2013. Boardings at some stations contain estimates based on other data within October 2015 . There have been closings and early closures due to construction.

**Metromover - Cumulative Average Weekday Ridership Percentage Share
Top 1/4, 1/3, 1/2 and 2/3 of Stations**

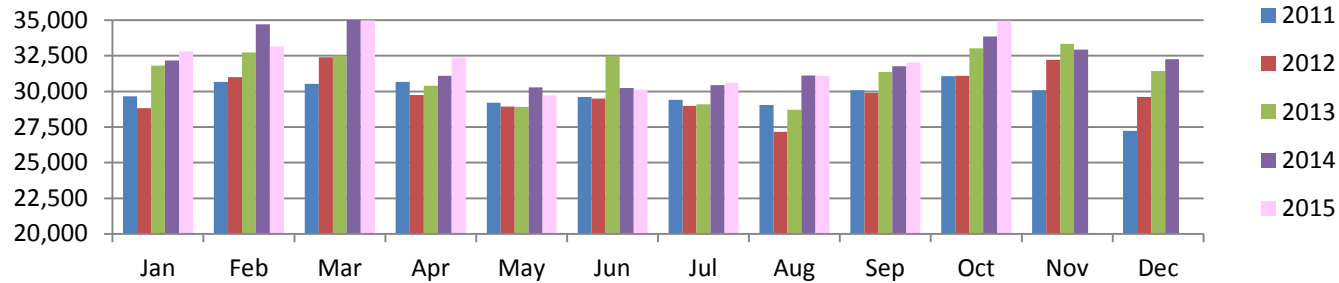


TOTAL MONTHLY AND AVERAGE WEEKDAY RIDERSHIP YEAR OVER YEAR COMPARISON CHARTS – METROMOVER

Monthly Metromover Boardings



Average Weekday Metromover Boardings



**“TOP 5 / BOTTOM 5” MOVER STATIONS AVERAGE WEEKDAY RIDERSHIP PERFORMANCE
YEAR OVER YEAR COMPARISONS**

Station	Oct-15	Oct-14	Absolute Delta (1)	Percent Delta
Brickell	3,433	3,128	305	9.8%
Bayfront Park	3,472	3,182	290	9.1%
Freedom Tower	830	599	231	38.6%
Tenth Street	1,657	1,463	193	13.2%
Riverwalk	923	756	167	22.1%
Fifth Street	573	935	-362	-38.7%
Omni	2,491	2,810	-319	-11.3%
Miami Avenue	797	864	-67	-7.7%
College North	1,534	1,594	-60	-3.7%
Park West	409	457	-48	-10.5%

(1) Averages rounded to the nearest boarding

Special Transportation Services



TOTAL MONTHLY AND AVERAGE WEEKDAY RIDERSHIP YEAR OVER YEAR COMPARISON CHARTS – SPECIAL TRANSPORTATION SERVICES (S.T.S.)

