



## TRANSPORTATION AND PUBLIC WORKS

### RIDERSHIP TECHNICAL REPORT

*Division of Performance and Materials Management*



September 2019

# Table of Contents

<i>Table of Contents</i>	2-3
<b>All Modes Overview</b>	<b>4</b>
Total Monthly Weekday, Saturday and Sunday Monthly Boardings By Mode	5
Average Weekday, Saturday and Sunday Boardings by Mode	6
All-Modes Combined Total Monthly Ridership Comparisons By Fiscal Year	7
All Modes Combined Total Monthly and Average Weekday Ridership – Year over Year Comparison Charts	8
Metrobus Total Monthly Ridership Comparisons by Fiscal Year	9
Metrorail Total Monthly Ridership Comparisons by Fiscal Year	10
Metromover Total Monthly Ridership Comparisons by Fiscal Year	11
STS Total Monthly Ridership Comparisons by Fiscal Year	12
Average Weekday Ridership – Modal Splits	13
<b>Metrobus</b>	<b>14</b>
Monthly and Average Daily Bus Boardings by Route	15-18
Metrobus Holiday Boardings By Route	19
Bus Ridership by Service Type	20-21
Bus Routes as Ranked by Percentage of Average Weekday Ridership	22
Metrobus Cumulative Percentage Average Weekday Ridership Share by Route (Top 75%)	23
Total Monthly and Average Weekday Rail Ridership – Year over Year Comparison Charts	24

## Table of Contents (continued)

### **Metrobus (Continued)**

Bus “Top 5 / Bottom 5” Routes Average Weekday Ridership Performance	25
Metrobus Parking Patronage Summary	26

### **Metrorail 27**

Monthly and Average Daily Rail Boardings by Station	28
Metrorail Holiday Boardings by Station	29
Metrorail Cumulative Percentage Average Weekday Ridership Share	30
Total Monthly and Average Weekday Rail Ridership – Year over Year Comparison Charts	31
“Top 5 / Bottom 5” Stations Average Weekday Ridership Performance	32
Metrorail Parking Patronage Summary	33

### **Metromover 34**

Monthly and Average Daily Mover Boardings by Station	35
Metromover Cumulative Percentage Average Weekday Ridership Share	36
Total Monthly and Average Weekday Mover Ridership – Year over Year Comparison Charts	37
“Top 5 / Bottom 5” Stations Average Weekday Ridership Performance	38

### **Special Transportation Services (STS) 39**

Total Monthly and Average Weekday STS Ridership – Year over Year Comparison Charts	40
--	----

### **Ridership Seasonality 41**

Ridership Seasonality – Percent Ridership Share by Month and Calendar year for Each Mode	42
--	----

## All Modes Overview



**TOTAL MONTHLY WEEKDAY, SATURDAY AND SUNDAY BOARDINGS BY MODE**  
**September 2019**

TRAVEL MODE	MONTH'S TOTAL WEEKDAYS RIDERSHIP	MONTH'S TOTAL SATURDAYS RIDERSHIP	MONTH'S TOTAL SUNDAYS RIDERSHIP	TOTAL MONTHLY RIDERSHIP	% CHANGE vs Sep 2018 TOTAL MONTH RIDERSHIP
<b>METROBUS</b>	3,217,831	363,903	389,486	3,971,220	-1.8%
<b>METRORAIL</b>	1,239,225	91,044	97,457	1,427,726	-6.7%
<b>METROMOVER</b>	566,921	63,766	69,192	699,879	0.2%
<b>STS</b>	120,099	10,349	10,939	141,387	-0.7%
<b>TOTAL</b>	<b>5,144,076</b>	<b>529,062</b>	<b>567,074</b>	<b>6,240,212</b>	<b>-2.7%</b>

(1) Sunday ridership includes Monday, September 2, 2019 (Labor Day Holiday). Ridership on that day was as follows:

Metrobus	47,124
Metrorail	12,932
Metromover	7,353
STS	562

**AVERAGE WEEKDAY, SATURDAY AND SUNDAY BOARDINGS BY MODE**  
**September 2019**

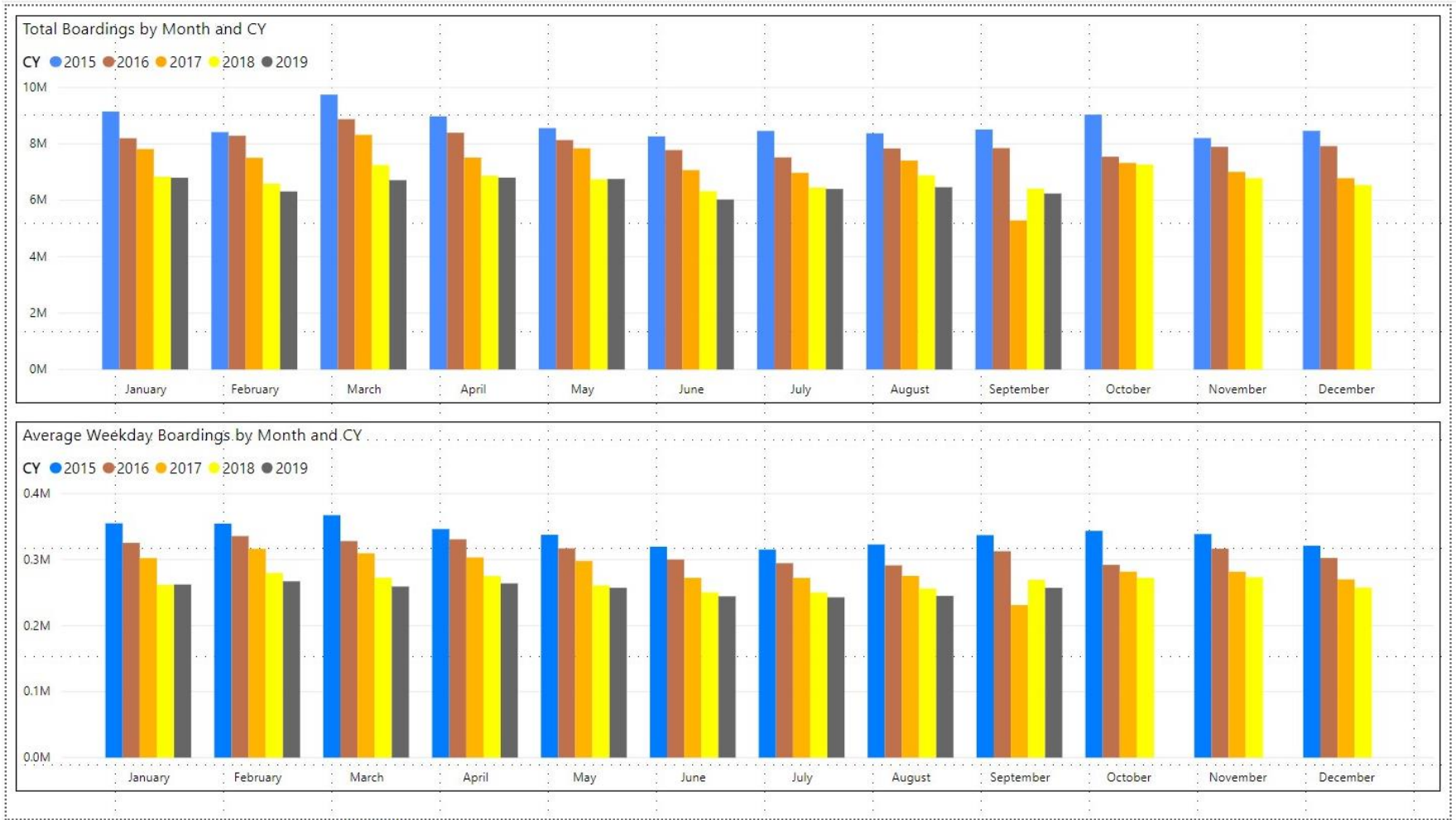
<b>Travel Mode</b>	<b>Average Weekday</b>	<b>Average Saturday</b>	<b>Average Sunday</b>	<b>% Change Sep 2018 Weekday</b>	<b>% Change Sep 2018 Saturday</b>	<b>% Change Sep 2018 Sunday</b>
<b>METROBUS</b>	161,000	91,000	65,000	-3.7%	-4.4%	-1.2%
<b>METRORAIL</b>	62,000	22,800	16,900	-7.9%	-15.2%	-15.9%
<b>METROMOVER</b>	28,300	15,900	12,400	-2.1%	-1.9%	1.6%
<b>STS</b>	6,000	2,600	1,800	-3.2%	8.3%	-5.3%
<b>Totals (1)</b>	<b>257,300</b>	<b>132,300</b>	<b>96,100</b>	<b>-4.5%</b>	<b>-6.0%</b>	<b>-3.9%</b>

(1) Totals and component averages rounded to the nearest 100 boardings.

## ALL-MODES COMBINED TOTAL MONTHLY RIDERSHIP COMPARISONS BY FISCAL YEAR

All Modes Month						Variances				
	FY 15	FY 16	FY 17	FY 18	FY 19	15 TO 16	16 TO 17	17 TO 18	18 TO 19	15 TO 19
<b>Oct</b>	9,771,384	9,035,169	7,543,706	7,322,886	7,265,208	-7.5%	-16.5%	-2.9%	-0.8%	-25.6%
<b>Nov</b>	8,566,872	8,204,872	7,894,500	7,005,032	6,783,315	-4.2%	-3.8%	-11.3%	-3.2%	-20.8%
<b>Dec</b>	9,101,659	8,461,341	7,919,860	6,783,192	6,538,734	-7.0%	-6.4%	-14.4%	-3.6%	-28.2%
<b>Jan</b>	9,144,662	8,198,929	7,814,784	6,834,741	6,797,602	-10.3%	-4.7%	-12.5%	-0.5%	-25.7%
<b>Feb</b>	8,416,526	8,286,466	7,505,125	6,591,531	6,312,033	-1.5%	-9.4%	-12.2%	-4.2%	-25.0%
<b>Mar</b>	9,746,143	8,874,636	8,317,082	7,244,805	6,712,624	-8.9%	-6.3%	-12.9%	-7.3%	-31.1%
<b>Apr</b>	8,974,654	8,394,885	7,513,151	6,869,802	6,802,085	-6.5%	-10.5%	-8.6%	-1.0%	-24.2%
<b>May</b>	8,558,391	8,132,723	7,841,691	6,742,402	6,755,829	-5.0%	-3.6%	-14.0%	0.2%	-21.1%
<b>Jun</b>	8,265,327	7,778,787	7,069,455	6,318,979	6,026,467	-5.9%	-9.1%	-10.6%	-4.6%	-27.1%
<b>Jul</b>	8,457,918	7,520,144	6,969,807	6,449,526	6,402,110	-11.1%	-7.3%	-7.5%	-0.7%	-24.3%
<b>Aug</b>	8,372,809	7,836,923	7,408,607	6,879,929	6,460,375	-6.4%	-5.5%	-7.1%	-6.1%	-22.8%
<b>Sep</b>	8,509,349	7,848,211	5,284,604	6,412,945	6,240,212	-7.8%	-32.7%	21.4%	-2.7%	-26.7%
<b>Total</b>	<b>105,885,694</b>	<b>98,573,086</b>	<b>89,082,372</b>	<b>81,455,770</b>	<b>79,096,594</b>	<b>-6.9%</b>	<b>-9.6%</b>	<b>-8.6%</b>	<b>-2.9%</b>	<b>-25.3%</b>

# **TOTAL MONTHLY AND AVERAGE WEEKDAY RIDERSHIP YEAR OVER YEAR COMPARISON CHARTS – ALL MODES COMBINED POWER BI™ VISUALIZATION**





## METROBUS TOTAL MONTHLY RIDERSHIP COMPARISONS BY FISCAL YEAR

Bus	Variance			Variance		Variance		Variance		Variance
	FY 15	FY 16	15 to 16	FY 17	16 to 17	FY 18	17 to 18	FY 19	18 to 19	15 to 19
<b>Oct</b>	6,733,528	6,058,615	-10.0%	4,925,781	-18.7%	4,709,590	-4.4%	4,554,886	-3.3%	-32.4%
<b>Nov</b>	5,962,528	5,483,456	-8.0%	5,181,524	-5.5%	4,522,250	-12.7%	4,245,535	-6.1%	-28.8%
<b>Dec</b>	6,299,190	5,642,424	-10.4%	5,192,692	-8.0%	4,380,099	-15.6%	4,081,581	-6.8%	-35.2%
<b>Jan</b>	6,303,923	5,417,604	-14.1%	5,084,085	-6.2%	4,307,001	-15.3%	4,195,911	-2.6%	-33.4%
<b>Feb</b>	5,745,141	5,467,632	-4.8%	4,914,307	-10.1%	4,208,811	-14.4%	3,994,019	-5.1%	-30.5%
<b>Mar</b>	6,625,764	5,725,541	-13.6%	5,287,813	-7.6%	4,534,564	-14.2%	4,266,768	-5.9%	-35.6%
<b>Apr</b>	6,097,604	5,524,501	-9.4%	4,895,697	-11.4%	4,360,997	-10.9%	4,291,135	-1.6%	-29.6%
<b>May</b>	5,874,383	5,391,463	-8.2%	5,087,877	-5.6%	4,277,628	-15.9%	4,330,922	1.2%	-26.3%
<b>Jun</b>	5,577,419	5,141,601	-7.8%	4,586,556	-10.8%	4,009,340	-12.6%	3,823,863	-4.6%	-31.4%
<b>Jul</b>	5,719,908	4,970,953	-13.1%	4,539,259	-8.7%	4,080,664	-10.1%	4,094,906	0.3%	-28.4%
<b>Aug</b>	5,709,703	5,172,498	-9.4%	4,780,589	-7.6%	4,326,980	-9.5%	4,109,613	-5.0%	-28.0%
<b>Sep</b>	5,737,433	5,154,265	-10.2%	3,524,818	-31.6%	4,041,992	14.7%	3,971,220	-1.8%	-30.8%
<b>Total</b>	<b>72,386,524</b>	<b>65,150,553</b>	<b>-10.0%</b>	<b>58,000,998</b>	<b>-11.0%</b>	<b>51,759,916</b>	<b>-10.8%</b>	<b>49,960,359</b>	<b>-3.5%</b>	<b>-31.0%</b>

## METRORAIL TOTAL MONTHLY RIDERSHIP COMPARISONS BY FISCAL YEAR

Rail	FY 15	FY 16	Variance 15 to 16	FY 17	Variance 16 to 17	FY 18	Variance 17 to 18	FY 19	Variance 18 to 19	Variance 15 to 19
<b>Oct</b>	1,976,097	1,930,352	-2.3%	1,670,933	-13.4%	1,708,564	2.3%	1,757,225	2.8%	-11.1%
<b>Nov</b>	1,706,362	1,761,820	3.3%	1,734,267	-1.6%	1,609,888	-7.2%	1,656,929	2.9%	-2.9%
<b>Dec</b>	1,810,803	1,813,506	0.1%	1,734,768	-4.3%	1,517,341	-12.5%	1,553,804	2.4%	-14.2%
<b>Jan</b>	1,857,513	1,787,476	-3.8%	1,743,638	-2.5%	1,615,576	-7.3%	1,708,695	5.8%	-8.0%
<b>Feb</b>	1,765,236	1,824,256	3.3%	1,676,215	-8.1%	1,545,581	-7.8%	1,501,458	-2.9%	-14.9%
<b>Mar</b>	1,996,221	1,994,796	-0.1%	1,926,434	-3.4%	1,700,714	-11.7%	1,554,851	-8.6%	-22.1%
<b>Apr</b>	1,897,764	1,843,808	-2.8%	1,677,459	-9.0%	1,619,890	-3.4%	1,559,446	-3.7%	-17.8%
<b>May</b>	1,790,898	1,769,327	-1.2%	1,787,885	1.0%	1,618,504	-9.5%	1,531,597	-5.4%	-14.5%
<b>Jun</b>	1,778,063	1,692,476	-4.8%	1,605,234	-5.2%	1,524,311	-5.0%	1,359,966	-10.8%	-23.5%
<b>Jul</b>	1,777,949	1,577,572	-11.3%	1,500,243	-4.9%	1,527,380	1.8%	1,419,158	-7.1%	-20.2%
<b>Aug</b>	1,729,701	1,711,665	-1.0%	1,693,524	-1.1%	1,632,471	-3.6%	1,463,646	-10.3%	-15.4%
<b>Sep</b>	1,824,002	1,753,985	-3.8%	1,234,135	-29.6%	1,530,088	24.0%	1,427,726	-6.7%	-21.7%
<b>Total</b>	<b>21,910,609</b>	<b>21,461,039</b>	<b>-2.1%</b>	<b>19,984,735</b>	<b>-6.9%</b>	<b>19,150,308</b>	<b>-4.2%</b>	<b>18,494,501</b>	<b>-3.4%</b>	<b>-15.6%</b>

## METROMOVER TOTAL MONTHLY RIDERSHIP COMPARISONS BY FISCAL YEAR

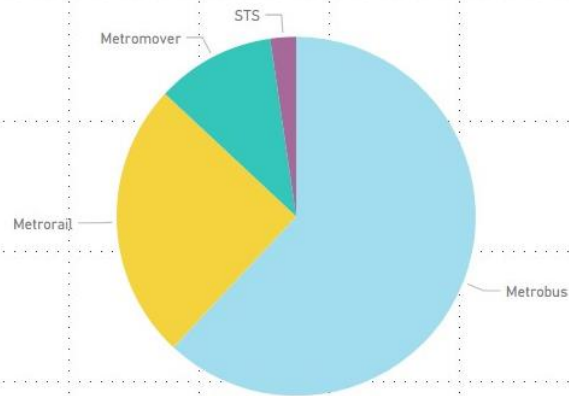
Mover	Variance			Variance		Variance		Variance		Variance
	FY 15	FY 16	15 to 16	FY 17	16 to 17	FY 18	17 to 18	FY 19	18 to 19	15 to 19
<b>Oct</b>	908,681	899,379	-1.0%	814,781	-9.4%	751,323	-7.8%	790,533	5.2%	-13.0%
<b>Nov</b>	768,595	828,643	7.8%	841,679	1.6%	729,519	-13.3%	735,198	0.8%	-4.3%
<b>Dec</b>	859,907	875,701	1.8%	858,961	-1.9%	748,797	-12.8%	767,239	2.5%	-10.8%
<b>Jan</b>	847,910	864,630	2.0%	852,788	-1.4%	772,122	-9.5%	746,728	-3.3%	-11.9%
<b>Feb</b>	776,527	860,579	10.8%	780,514	-9.3%	698,107	-10.6%	675,160	-3.3%	-13.1%
<b>Mar</b>	980,141	1,010,118	3.1%	949,045	-6.0%	859,143	-9.5%	737,814	-14.1%	-24.7%
<b>Apr</b>	835,099	886,427	6.1%	802,778	-9.4%	740,036	-7.8%	795,696	7.5%	-4.7%
<b>May</b>	755,966	831,477	10.0%	814,791	-2.0%	694,106	-14.8%	734,645	5.8%	-2.8%
<b>Jun</b>	771,743	806,774	4.5%	737,042	-8.6%	641,675	-12.9%	701,318	9.3%	-9.1%
<b>Jul</b>	821,465	841,630	2.5%	796,649	-5.3%	700,462	-12.1%	739,814	5.6%	-9.9%
<b>Aug</b>	803,236	814,796	1.4%	788,734	-3.2%	768,728	-2.5%	739,785	-3.8%	-7.9%
<b>Sep</b>	808,322	797,995	-1.3%	425,641	-46.7%	698,505	64.1%	699,879	0.2%	-13.4%
<b>Total</b>	<b>9,937,592</b>	<b>10,318,149</b>	<b>3.8%</b>	<b>9,463,403</b>	<b>-8.3%</b>	<b>8,802,523</b>	<b>-7.0%</b>	<b>8,863,809</b>	<b>0.7%</b>	<b>-10.8%</b>

## SPECIAL TRANSPORTATION SERVICES (STS) TOTAL MONTHLY RIDERSHIP COMPARISONS BY FISCAL YEAR

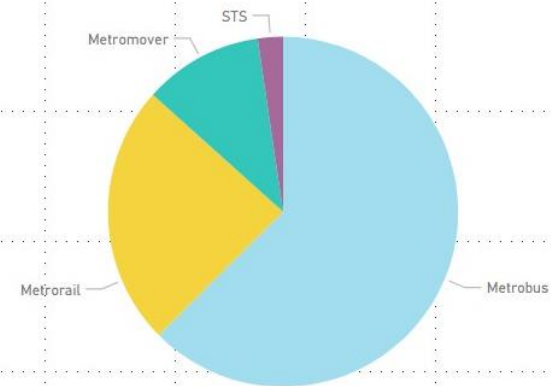
STS	FY 15	FY 16	Variance 15 to 16	FY 17	Variance 16 to 17	FY 18	Variance 17 to 18	FY 19	Variance 18 to 19	Variance 15 to 19
<b>Oct</b>	153,078	146,823	-4.1%	132,211	-10.0%	153,409	16.0%	162,564	6.0%	6.2%
<b>Nov</b>	129,387	130,953	1.2%	137,030	4.6%	143,375	4.6%	145,653	1.6%	12.6%
<b>Dec</b>	131,759	129,710	-1.6%	133,439	2.9%	136,955	2.6%	136,110	-0.6%	3.3%
<b>Jan</b>	135,316	129,219	-4.5%	134,273	3.9%	140,042	4.3%	146,268	4.4%	8.1%
<b>Feb</b>	129,622	133,999	3.4%	134,089	0.1%	139,032	3.7%	141,396	1.7%	9.1%
<b>Mar</b>	144,017	144,181	0.1%	153,790	6.7%	150,384	-2.2%	153,191	1.9%	6.4%
<b>Apr</b>	144,187	140,149	-2.8%	137,217	-2.1%	148,879	8.5%	155,808	4.7%	8.1%
<b>May</b>	137,144	140,456	2.4%	151,138	7.6%	152,164	0.7%	158,665	4.3%	15.7%
<b>Jun</b>	138,102	137,936	-0.1%	140,623	1.9%	143,653	2.2%	141,320	-1.6%	2.3%
<b>Jul</b>	138,596	129,989	-6.2%	133,656	2.8%	141,020	5.5%	148,232	5.1%	7.0%
<b>Aug</b>	130,169	137,964	6.0%	145,760	5.7%	151,750	4.1%	147,331	-2.9%	13.2%
<b>Sep</b>	139,592	141,966	1.7%	100,010	-29.6%	142,360	42.3%	141,387	-0.7%	1.3%
<b>Total</b>	<b>1,650,969</b>	<b>1,643,345</b>	<b>-0.5%</b>	<b>1,633,236</b>	<b>-0.6%</b>	<b>1,743,023</b>	<b>6.7%</b>	<b>1,777,925</b>	<b>2.0%</b>	<b>7.7%</b>

## AVERAGE WEEKDAY RIDERSHIP - MODAL SPLITS POWER BI™ VISUALIZATION

September 2018 % Ridership Share by Mode



September 2019 % Ridership Share by Mode



## Metrobus



# METROBUS MONTHLY AND AVERAGE DAILY BOARDINGS BY ROUTE

Route	Average Weekday	Average Weekday	Percent Change	Average Saturday	Average Saturday	Percent Change	Average Sunday	Average Sunday	Percent Change	Total Monthly	Total Monthly	Percent Change
	Sep-19	Sep-18	19 vs 18	Sep-19	Sep-18	19 vs 18	Sep-19	Sep-18	19 vs 18	Sep-19	Sep-18	19 vs 18
<b>1 (*)</b>	290	306	-5.1%	243	315	-22.7%	216	271	-20.2%	8,077	9,010	-10.4%
<b>2</b>	2,416	2,381	1.5%	1,456	1,466	-0.7%	949	922	2.9%	59,830	58,097	3.0%
<b>3</b>	4,746	5,015	-5.4%	5,053	5,362	-5.8%	3,737	3,967	-5.8%	137,554	145,900	-5.7%
<b>7</b>	3,254	4,689	-30.6%	1,801	2,488	-27.6%	1,369	1,655	-17.3%	80,504	111,463	-27.8%
<b>8</b>	3,772	4,006	-5.9%	1,909	2,221	-14.1%	1,484	1,486	-0.2%	91,970	96,136	-4.3%
<b>9</b>	5,248	5,083	3.3%	3,087	3,316	-6.9%	2,200	2,196	0.2%	130,511	126,329	3.3%
<b>10</b>	2,105	2,230	-5.6%	1,708	1,819	-6.1%	1,237	1,267	-2.4%	56,360	59,055	-4.6%
<b>11</b>	7,023	7,632	-8.0%	5,287	5,396	-2.0%	3,673	3,485	5.4%	183,647	192,903	-4.8%
<b>12</b>	2,766	2,633	5.0%							55,318	50,026	10.6%
<b>16</b>	1,749	1,863	-6.1%	1,399	1,578	-11.4%	813	834	-2.6%	45,451	48,299	-5.9%
<b>17</b>	3,796	3,936	-3.5%	2,449	2,416	1.4%	1,535	1,530	0.3%	94,933	96,038	-1.2%
<b>19</b>	1,578	1,799	-12.3%							31,550	34,180	-7.7%
<b>21</b>	1,817	1,937	-6.2%							36,338	36,796	-1.2%
<b>22</b>	3,559	4,003	-11.1%	2,005	2,316	-13.5%	1,349	1,493	-9.6%	87,285	96,595	-9.6%
<b>24 - Coral Way Limited</b>	1,735	1,919	-9.6%	1,189	1,328	-10.5%	870	917	-5.1%	44,683	48,596	-8.1%
<b>27</b>	6,639	6,940	-4.3%	3,982	4,340	-8.3%	2,808	2,782	0.9%	165,560	170,251	-2.8%
<b>29 (*)</b>	669	808	-17.2%							13,388	15,357	-12.8%
<b>31 - BUSWAY LOCAL</b>	1,044	1,179	-11.4%	856	798	7.2%	594	567	4.8%	27,875	29,798	-6.5%
<b>32</b>	2,384	2,399	-0.6%	1,003	1,050	-4.5%	678	681	-0.4%	55,761	54,908	1.6%
<b>33</b>	1,687	1,686	0.0%	919	978	-6.0%	501	489	2.4%	40,412	39,853	1.4%
<b>34 EXPRESS</b>	1,900	1,917	-0.9%							38,008	36,421	4.4%
<b>35 (*)</b>	2,354	2,654	-11.3%	1,123	1,131	-0.7%	776	692	12.0%	56,218	60,229	-6.7%
<b>36</b>	2,395	2,076	15.3%	1,212	1,304	-7.1%	971	949	2.3%	58,566	51,665	13.4%
<b>37</b>	3,262	3,202	1.9%	2,076	2,098	-1.0%	1,520	1,419	7.1%	82,666	79,852	3.5%
<b>38</b>	6,462	6,689	-3.4%	4,750	4,868	-2.4%	3,844	3,734	2.9%	171,304	173,834	-1.5%
<b>39 EXPRESS</b>	937	961	-2.5%							18,732	18,250	2.6%

# METROBUS MONTHLY AND AVERAGE DAILY BOARDINGS BY ROUTE

Route	Average Weekday	Average Weekday	Percent Change	Average Saturday	Average Saturday	Percent Change	Average Sunday	Average Sunday	Percent Change	Total Monthly	Total Monthly	Percent Change
	Sep-19	Sep-18	19 vs 18	Sep-19	Sep-18	19 vs 18	Sep-19	Sep-18	19 vs 18	Sep-19	Sep-18	19 vs 18
<b>40</b>	1,713	1,827	-6.2%	642	726	-11.6%	425	442	-3.9%	39,382	41,003	-4.0%
<b>42</b>	848	830	2.1%	535	606	-11.8%	321	337	-4.8%	21,017	20,827	0.9%
<b>46 - LIBERTY CITY CONN. (*)</b>	25	60	-57.8%							506	1,140	-55.6%
<b>51 - FLAGLER MAX</b>	3,127	3,073	1.8%							62,530	58,379	7.1%
<b>52</b>	1,266	1,431	-11.5%	660	713	-7.4%	453	467	-2.9%	30,684	33,552	-8.5%
<b>54</b>	2,908	2,966	-2.0%	1,676	1,793	-6.5%	1,110	1,085	2.3%	71,522	71,826	-0.4%
<b>55 MARLINS SHUTTLE</b>	46	46	-0.4%	65	40	63.3%	66	71	-8.2%	536	570	-6.0%
<b>56 (*)</b>	369	395	-6.6%							7,378	7,507	-1.7%
<b>57</b>	407	430	-5.5%							8,131	8,171	-0.5%
<b>62</b>	1,825	1,825	0.0%	1,184	1,359	-12.9%	779	766	1.6%	45,904	46,061	-0.3%
<b>71 (*)</b>	563	679	-17.1%	192	218	-12.2%	129	152	-15.0%	12,800	14,909	-14.1%
<b>72 (*)</b>	722	750	-3.7%	335	351	-4.7%	244	252	-3.0%	17,240	17,507	-1.5%
<b>73</b>	2,153	2,154	-0.1%	1,034	943	9.7%	367	436	-15.8%	49,400	48,261	2.4%
<b>75</b>	1,508	1,363	10.6%	460	460	0.0%	246	192	28.1%	33,471	29,343	14.1%
<b>77</b>	7,175	7,492	-4.2%	4,015	4,338	-7.4%	2,484	2,641	-5.9%	174,470	179,891	-3.0%
<b>79</b>	318	200	59.0%							6,357	3,799	67.3%
<b>82 - WESTCHESTER CIRC. (*)</b>	54	50	7.0%	39						1,233	955	29.1%
<b>87</b>	1,544	1,641	-5.9%	427	511	-16.4%	287	291	-1.4%	34,306	35,482	-3.3%
<b>88</b>	2,001	2,241	-10.7%	1,522	1,682	-9.5%	1,105	1,135	-2.6%	52,733	57,793	-8.8%
<b>93 - BISCAYNE MAX</b>	3,199	3,481	-8.1%							63,972	66,145	-3.3%
<b>95 EXPRESS</b>	1,803	2,020	-10.8%							36,052	38,386	-6.1%
<b>99</b>	1,449	1,474	-1.7%	885	900	-1.7%	578	561	2.9%	35,979	35,875	0.3%
<b>101 - A (*)</b>	156	170	-8.1%	60	70	-14.8%	42	49	-14.0%	3,608	3,864	-6.6%
<b>102 - B</b>	1,617	1,384	16.8%	726	756	-3.9%	600	667	-10.2%	38,832	34,074	14.0%
<b>103 - C</b>	403	393	2.4%	288	275	4.7%	163	149	8.9%	10,186	9,746	4.5%
<b>104</b>	934	1,059	-11.8%	503	516	-2.6%	299	341	-12.4%	22,478	24,750	-9.2%
<b>105 - E</b>	1,125	1,183	-4.9%	602	632	-4.7%	481	462	4.1%	27,801	28,408	-2.1%



# METROBUS MONTHLY AND AVERAGE DAILY BOARDINGS BY ROUTE

Route	Average Weekday	Average Weekday	Percent Change	Average Saturday	Average Saturday	Percent Change	Average Sunday	Average Sunday	Percent Change	Total Monthly	Total Monthly	Percent Change
	Sep-19	Sep-18	19 vs 18	Sep-19	Sep-18	19 vs 18	Sep-19	Sep-18	19 vs 18	Sep-19	Sep-18	19 vs 18
107 - G	1,635	1,658	-1.4%	1,050	1,102	-4.7%	705	712	-1.0%	41,139	41,290	-0.4%
108 - H	435	461	-5.7%	359	362	-0.8%	281	304	-7.7%	11,819	12,400	-4.7%
110 - J	2,447	2,404	1.8%	1,867	1,699	9.9%	1,268	1,273	-0.4%	64,012	61,798	3.6%
112 - L	7,161	7,210	-0.7%	5,660	5,744	-1.5%	3,958	4,071	-2.8%	189,610	190,129	-0.3%
113 - M	793	662	19.8%	480	448	7.2%	350	308	13.6%	19,889	16,668	19.3%
115 (*)	144	72	100.2%	97	39	148.1%	73	23	216.7%	3,704	1,700	117.9%
119 - S	7,799	8,094	-3.6%	6,632	6,608	0.3%	5,889	6,051	-2.7%	217,831	223,130	-2.4%
120 - BEACH MAX	5,866	5,305	10.6%	4,464	4,089	9.2%	2,840	2,633	7.9%	152,212	137,031	11.1%
132 TRI-RAIL (DORAL)	14	22	-33.5%							289	413	-30.0%
135	1,291	1,426	-9.5%	496	515	-3.8%	317	281	12.7%	29,704	31,355	-5.3%
136	142	162	-12.5%							2,830	3,072	-7.9%
137 - WEST DADE CONN.	1,644	1,745	-5.8%	1,046	1,119	-6.6%	787	772	1.9%	41,785	43,378	-3.7%
150 - MIAMI BEACH AIRPORT FLYER	1,604	1,705	-5.9%	1,402	1,652	-15.1%	1,196	1,425	-16.1%	44,866	49,210	-8.8%
155 - BISCAYNE GARDENS CIRCULATOR (*)	44	66	-33.3%							876	1,248	-29.8%
183	2,917	3,031	-3.8%	1,731	1,804	-4.0%	1,208	1,238	-2.4%	72,509	74,046	-2.1%
195 EXPRESS - BROWARD BLVD	415	493	-15.8%							8,299	9,361	-11.3%
196 EXPRESS - SHERIDAN ST	382	465	-17.8%							7,648	8,842	-13.5%
200 - CUTLER BAY LOCAL	160	181	-11.6%	135	150	-10.2%	43			3,992	4,186	-4.6%
202 - LITTLE HAITI CONN. (*)	136	132	3.0%	67	73	-8.3%	48	48	0.0%	3,284	3,169	3.6%
204 KILLIAN KAT	1,034	1,107	-6.7%							20,670	21,042	-1.8%
207 (7st) - LITTLE HAVANA CIRC	1,474	1,276	15.5%	943	934	1.0%	655	602	8.9%	37,180	32,528	14.3%
208 (8st) - LITTLE HAVANA CIRC	1,422	1,151	23.5%	995	959	3.7%	788	726	8.4%	37,140	31,028	19.7%
210 - SKYLAKE CIRC (*)	297	211	41.2%	180	175	2.5%	140	135	4.0%	7,506	5,687	32.0%
211 - OVERTOWN CIRC. (*)	66	69	-4.1%							1,320	1,307	1.0%
212 - SWEETWATER CIRC. (*)	38	57	-33.6%							756	1,082	-30.1%
217 - BUNCHE PARK CIRC (*)	59	63	-6.5%							1,172	1,191	-1.6%
238 EAST/WEST CONN.	450	450	0.0%							8,990	8,542	5.2%

# METROBUS MONTHLY AND AVERAGE DAILY BOARDINGS BY ROUTE

Route	Average Weekday	Average Weekday	Percent Change	Average Saturday	Average Saturday	Percent Change	Average Sunday	Average Sunday	Percent Change	Total Monthly	Total Monthly	Percent Change
	Sep-19	Sep-18	19 vs 18	Sep-19	Sep-18	19 vs 18	Sep-19	Sep-18	19 vs 18	Sep-19	Sep-18	19 vs 18
246 - NIGHT OWL (*)	90	120	-25.1%	74	104	-28.9%	88	110	-20.3%	2,619	3,459	-24.3%
248 - PRINCETON CIRCULATOR (*)	116									2,324		
252 - CORAL REEF MAX	858	947	-9.4%	283	344	-17.8%	212	249	-14.9%	19,563	21,200	-7.7%
254 - BROWNSVILLE CIRC. (*)	15	28	-47.0%							295	529	-44.2%
267 - LUDLAM LIMITED (*)	122	147	-16.6%							2,447	2,789	-12.3%
272 SUNSET KAT (*)	526	516	1.9%							10,513	9,803	7.2%
277 - 7th AVENUE MAX	601	716	-16.2%							12,010	13,612	-11.8%
286 - NORTH POINTE CIRC. (*)	75	90	-17.0%	56	64	-12.6%				1,724	2,036	-15.3%
287 - SAGA BAY MAX	332	360	-7.7%							6,648	6,846	-2.9%
288 - KENDALL CRUISER	782	827	-5.4%							15,641	15,713	-0.5%
295 EXPRESS - BROWARD BLVD - CIVIC CENTER	233	285	-18.3%							4,655	5,413	-14.0%
296 EXPRESS - SHERIDAN ST - CIVIC CENTER	228	198	15.2%							4,555	3,756	21.3%
297-27th AVENUE ORANGE MAX	1,300	1,436	-9.5%					176		25,997	27,644	-6.0%
301 DADE-MONROE EXPRESS (*)	737	851	-13.3%	753	785	-4.1%	657	694	-5.3%	21,699	24,251	-10.5%
302 CARD SOUND EXPRESS (*)	66	64	3.4%	52	43	20.4%	44	42	4.0%	1,787	1,678	6.5%
338 - WEEKEND EXPRESS				202	236	-14.3%	197	207	-5.0%	1,988	2,420	-17.9%
344 (*)	88	99	-11.0%							1,761	1,879	-6.3%
500	30	41	-26.6%	40	43	-6.7%	42	34	21.4%	1,017	1,206	-15.7%
12/21 WEEKEND INTERL.				2,568	2,614	-1.8%	1,878	1,872	0.4%	21,541	24,299	-11.4%
GREEN HILLS SHUTTLE (*)	6	9	-31.1%							31	36	-13.9%
KINGS CREEK SHUTTLE (*)	14	20	-30.8%							54	78	-30.8%
SIERRA LAKES SHUTTLE (*)	26	37	-30.6%							102	147	-30.6%
ROBERT SHARP SHUTTLE (*)	5	7	-29.6%							19	27	-29.6%
AHEPA SHUTTLE (*)	23	42	-45.5%							91	167	-45.5%
FEDERATION GARDENS SHUTTLE (*)				25	21	15.6%				98	106	-7.5%
<b>Total</b>	<b>160,982</b>	<b>167,076</b>	<b>-3.6%</b>	<b>91,008</b>	<b>95,202</b>	<b>-4.4%</b>	<b>64,958</b>	<b>65,815</b>	<b>-1.3%</b>	<b>3,971,220</b>	<b>4,041,992</b>	<b>-1.8%</b>

(1) Excludes shuttles and those routes which were not run both years.

(\*) The following routes are operated under contract: 1, 29, 35, 46, 56, 71, 72, 82, 101-A, 115, 155, 202, 210, 211, 212, 217, 246, 248, 254, 267, 272, 286 and 344. Dade-Monroe routes 301 and 302 as well as six Lifeline routes are also under contracted operation.

Due to data validation issues in NextFare, especially affecting Route 1, beginning with the April 2018 ridership technical report all contracted routes' boardings are reported directly from contractor counts.

# METROBUS HOLIDAY BOARDINGS BY ROUTE

## Labor Day Holiday 2019

ROUTES	Labor Day 2018	Labor Day 2019	Pct Delta	ROUTES	Labor Day 2018	Labor Day 2019	Pct Delta
1 (*)	70	207	195.7%	87	159	199	25.2%
2	560	699	24.8%	88	762	856	12.3%
3	3,312	2,549	-23.0%	99	420	343	-18.3%
7	956	949	-0.7%	101 (*)	65	45	-30.8%
8	1,076	1,269	17.9%	102	502	402	-19.9%
9	1,663	1,572	-5.5%	103	101	112	10.9%
10	933	838	-10.2%	104	354	267	-24.6%
11	2,577	2,837	10.1%	105	336	367	9.2%
12	645	809	25.4%	107	594	447	-24.7%
16	746	602	-19.3%	108	248	148	-40.3%
17	970	1,144	17.9%	110	908	961	5.8%
21	761	627	-17.6%	112	3,253	2,710	-16.7%
22	1,148	1,040	-9.4%	113	181	253	39.8%
24	521	619	18.8%	115 (*)	31	81	161.3%
27	2,063	1,977	-4.2%	119	4,952	3,774	-23.8%
31	336	450	33.9%	120	2,226	1,737	-22.0%
32	460	406	-11.7%	135	191	192	0.5%
33	276	373	35.1%	137	375	622	65.9%
35 (*)	386	828	114.5%	150	1,202	813	-32.4%
36	640	759	18.6%	183	963	687	-28.7%
37	941	1,332	41.6%	202 (*)	25	52	108.0%
38	2,570	2,952	14.9%	207	361	520	44.0%
40	357	357	0.0%	208	403	556	38.0%
42	222	240	8.1%	210 (*)	116	147	26.7%
52	308	370	20.1%	246 (*)	130	88	-32.3%
54	769	819	6.5%	252	171	175	2.3%
62	475	544	14.5%	301 (*)	576	497	-13.7%
71 (*)	110	135	22.7%	302 (*)	45	43	-4.4%
72 (*)	176	250	42.0%	338	250	198	-20.8%
73	249	315	26.5%	500	36	32	-11.1%
75	170	142	-16.5%				
77	2,217	1,769	-20.2%	Total	48,599	47,103	-3.1%

(1) Excludes lifeline shuttles and those routes which were not run both years

(\*) Routes under contracted operation

## BUS RIDERSHIP BY ROUTE SERVICE TYPE

Boardings by Service Type and Route	Average Weekday Sep-19	Average Weekday Sep-18	Percent Change 19 vs 18	Average Saturday Sep-19	Average Saturday Sep-18	Percent Change 19 vs 18	Average Sunday Sep-19	Average Sunday Sep-18	Percent Change 19 vs 18	Total Monthly Sep-19	Total Monthly Sep-18	Percent Change 19 vs 18
<b>Express Routes</b>												
34 EXPRESS	1,900	1,917	-0.9%							38,008	36,421	4.4%
39 EXPRESS	937	961	-2.5%							18,732	18,250	2.6%
95-EXPRESS	1,803	2,020	-10.8%							36,052	38,386	-6.1%
150-MIAMI BEACH AIRPORT FLYER	1,604	1,705	-5.9%	1,402	1,652	-15.1%	1,196	1,425	-16.1%	44,866	49,210	-8.8%
195 EXPRESS - BROWARD BLVD	415	493	-15.8%							8,299	9,361	-11.3%
196 EXPRESS - SHERIDAN ST	382	465	-17.8%							7,648	8,842	-13.5%
295 EXPRESS - BROWARD BLVD - CIVIC CENTER	233	285	-18.3%							4,655	5,413	-14.0%
296 EXPRESS - SHERIDAN ST - CIVIC CENTER	228	198	15.2%							4,555	3,756	21.3%
204 KAT-KILLIAN	1,034	1,107	-6.7%							20,670	21,042	-1.8%
288 KENDALL CRUISER	782	827	-5.4%							15,641	15,713	-0.5%
338 - WEEKEND EXPRESS				202	236	-14.3%	197	207	-5.0%	1,988	2,420	-17.9%
<b>Subtotal Express Routes</b>	<b>9,317</b>	<b>9,978</b>	<b>-6.6%</b>	<b>1,604</b>	<b>1,888</b>	<b>-15.0%</b>	<b>1,392</b>	<b>1,632</b>	<b>-14.7%</b>	<b>201,114</b>	<b>208,814</b>	<b>-3.7%</b>
<b>Percentage of All Bus Routes</b>	<b>5.8%</b>	<b>6.0%</b>		<b>1.8%</b>	<b>2.0%</b>		<b>2.1%</b>	<b>2.5%</b>		<b>5.1%</b>	<b>5.2%</b>	
<b>Contracted Regular &amp; Circulator Routes</b>												
1	290	306	-5.1%	243	315	-22.7%	216	271	-20.2%	8,077	9,010	-10.4%
29	669	808	-17.2%							13,388	15,357	-12.8%
35	2,354	2,654	-11.3%	1,123	1,131	-0.7%	776	692	12.0%	56,218	60,229	-6.7%
46 - LIBERTY CITY CONN.	25	60	-57.8%							506	1,140	-55.6%
56	369	395	-6.6%							7,378	7,507	-1.7%
71	563	679	-17.1%	192	218	-12.2%	129	152	-15.0%	12,800	14,909	-14.1%
72	722	750	-3.7%	335	351	-4.7%	244	252	-3.0%	17,240	17,507	-1.5%
82 - WESTCHESTER CIRC	54	50	7.0%	39						1,233	955	29.1%
101 - A	156	170	-8.1%	60	70	-14.8%	42	49	-14.0%	3,608	3,864	-6.6%
115	144	72	100.2%	97	39	148.1%	73	23	216.7%	3,704	1,700	117.9%
155 - BISCAYNE GARDENS CIRC	44	66	-33.3%							876	1,248	-29.8%
202 - LITTLE HAITI CONN.	136	132	3.0%	67	73	-8.3%	48	48		3,284	3,169	3.6%
210 - SKYLAKE CIRC	297	211	41.2%	180	175	2.5%	140	135	4.0%	7,506	5,687	32.0%
211-OVERTOWN CIRC	66	69	-4.1%							1,320	1,307	1.0%
212-SWEETWATER CIRC	38	57	-33.6%							756	1,082	-30.1%
217 - BUNCHE PARK CIRC	59	63	-6.5%							1,172	1,191	-1.6%
246 - NIGHT OWL	90	120	-25.1%	74	104	-28.9%	88	110	-20.3%	2,619	3,459	-24.3%
248 - PRINCETON CIRCULATOR	116									2,324		
254-BROWNSVILLE CIRC	15	28	-47.0%							295	529	-44.2%
267-LUDLAM LIMITED	122	147	-16.6%							2,447	2,789	-12.3%
272 KAT-SUNSET	526	516	1.9%							10,513	9,803	7.2%
286-NORTH POINTE CIRC	75	90	-17.0%	56	64	-12.6%				1,724	2,036	-15.3%
344	88	99	-11.0%							1,761	1,879	-6.3%
<b>Subtotal Contracted Reg. &amp; Circ. Routes</b>	<b>7,018</b>	<b>7,541</b>	<b>-6.9%</b>	<b>2,465</b>	<b>2,540</b>	<b>-2.9%</b>	<b>1,755</b>	<b>1,731</b>	<b>1.4%</b>	<b>160,749</b>	<b>166,357</b>	<b>-3.4%</b>
<b>Percentage of All Bus Routes</b>	<b>4.4%</b>	<b>4.5%</b>		<b>2.7%</b>	<b>2.7%</b>		<b>2.7%</b>	<b>2.6%</b>		<b>4.0%</b>	<b>4.1%</b>	

## BUS RIDERSHIP BY ROUTE SERVICE TYPE

Boardings by Service Type and Route	Average Weekday	Average Weekday	Percent Change	Average Saturday	Average Saturday	Percent Change	Average Sunday	Average Sunday	Percent Change	Total Monthly	Total Monthly	Percent Change
	Sep-19	Sep-18	19 vs 18	Sep-19	Sep-18	19 vs 18	Sep-19	Sep-18	19 vs 18	Sep-19	Sep-18	19 vs 18
<b>Contracted Express Routes</b>												
301-DADE MONROE EXPRESS	737	851	-13.3%	753	785	-4.1%	657	694	-5.3%	21,699	24,251	-10.5%
302-CARD SOUND EXPRESS	66	64	3.4%	52	43	20.4%	44	42	4.0%	1,787	1,678	6.5%
<b>Subtotal Contracted Express Routes</b>	<b>803</b>	<b>914</b>	<b>-12.2%</b>	<b>805</b>	<b>828</b>	<b>-2.8%</b>	<b>701</b>	<b>736</b>	<b>-4.8%</b>	<b>23,486</b>	<b>25,929</b>	<b>-9.4%</b>
<b>Percentage of All Bus Routes</b>	<b>0.5%</b>	<b>0.5%</b>		<b>0.9%</b>	<b>0.9%</b>		<b>1.1%</b>	<b>1.1%</b>		<b>0.6%</b>	<b>0.6%</b>	
<b>Limited Stop Routes</b>												
51-FLAGLER MAX	3,127	3,073	1.8%							62,530	58,379	7.1%
93 - BISCAYNE MAX	3,199	3,481	-8.1%							63,972	66,145	-3.3%
120 - BEACH MAX	5,866	5,305	10.6%	4,464	4,089	9.2%	2,840	2,633	7.9%	152,212	137,031	11.1%
252-CORAL REEF MAX	858	947	-9.4%	283	344	-17.8%	212	249	-14.9%	19,563	21,200	-7.7%
277-7TH AVENUE MAX	601	716	-16.2%							12,010	13,612	-11.8%
287-SAGA BAY MAX	332	360	-7.7%							6,648	6,846	-2.9%
297-27th AVENUE ORANGE MAX	1,300	1,436	-9.5%					176		25,997	27,644	-6.0%
<b>Subtotal Limited Stop (MAX) Routes</b>	<b>15,282</b>	<b>15,319</b>	<b>-0.2%</b>	<b>4,747</b>	<b>4,432</b>	<b>7.1%</b>	<b>3,051</b>	<b>3,057</b>	<b>-0.2%</b>	<b>342,932</b>	<b>330,857</b>	<b>3.6%</b>
<b>Percentage of All Bus Routes</b>	<b>9.5%</b>	<b>9.2%</b>		<b>5.2%</b>	<b>4.7%</b>		<b>4.7%</b>	<b>4.6%</b>		<b>8.6%</b>	<b>8.2%</b>	
<b>Free Route</b>												
132 -TRI-RAIL DORAL	14	22	-33.5%							289	413	-30.0%
<b>Percentage of All Bus Routes</b>	<b>0.0%</b>	<b>0.0%</b>								<b>0.0%</b>	<b>0.0%</b>	
<b>Shuttles</b>												
55-MARLINS SHUTTLE	46	46	-0.4%	65	40	63.3%	66	71	-8.2%	536	570	-6.0%
<b>Percentage of All Bus Routes</b>	<b>0.0%</b>	<b>0.0%</b>		<b>0.1%</b>	<b>0.0%</b>		<b>0.1%</b>	<b>0.1%</b>		<b>0.0%</b>	<b>0.0%</b>	
<b>Contractor-Operated Lifeline Routes</b>												
GREEN HILLS SHUTTLE	6	9	-31.1%							31	36	-13.9%
KINGS CREEK SHUTTLE	14	20	-30.8%							54	78	-30.8%
SIERRA LAKES SHUTTLE	26	37	-30.6%							102	147	-30.6%
ROBERT SHARP SHUTTLE	5	7	-29.6%							19	27	-29.6%
AHEPA SHUTTLE	23	42	-45.5%							91	167	-45.5%
FEDERATION GARDENS SHUTTLE				25	21	15.6%				98	106	-7.5%
<b>Subtotal Contractor-Operated Lifeline Routes</b>	<b>73</b>	<b>114</b>	<b>-36.1%</b>	<b>25</b>	<b>21</b>	<b>15.6%</b>				<b>395</b>	<b>561</b>	<b>-29.6%</b>
<b>Percentage of All Bus Routes</b>	<b>0.0%</b>	<b>0.1%</b>		<b>0.0%</b>	<b>0.0%</b>		<b>0.0%</b>	<b>0.0%</b>		<b>0.0%</b>	<b>0.0%</b>	
<b>Other Circulator Route</b>												
200-CUTLER BAY LOCAL	160	181	-11.6%	135	150	-10.2%	43			3,992	4,186	-4.6%
<b>Percentage of All Bus Routes</b>	<b>0.1%</b>	<b>0.1%</b>		<b>0.1%</b>	<b>0.2%</b>		<b>0.1%</b>			<b>0.1%</b>	<b>0.1%</b>	
<b>All Other (Regular) Routes</b>	<b>128,269</b>	<b>132,961</b>	<b>-3.5%</b>	<b>81,164</b>	<b>85,302</b>	<b>-4.9%</b>	<b>57,950</b>	<b>58,588</b>	<b>-1.1%</b>	<b>3,237,727</b>	<b>3,304,305</b>	<b>-2.0%</b>
<b>Percentage of All Bus Routes</b>	<b>79.7%</b>	<b>79.6%</b>		<b>89.2%</b>	<b>89.6%</b>		<b>89.2%</b>	<b>89.0%</b>		<b>81.5%</b>	<b>81.7%</b>	
<b>Total Bus System (1)</b>	<b>160,982</b>	<b>167,076</b>	<b>-3.6%</b>	<b>91,008</b>	<b>95,202</b>	<b>-4.4%</b>	<b>64,958</b>	<b>65,815</b>	<b>-1.3%</b>	<b>3,971,220</b>	<b>4,041,992</b>	<b>-1.8%</b>

(1) Excludes shuttles and those routes which were not run both years.

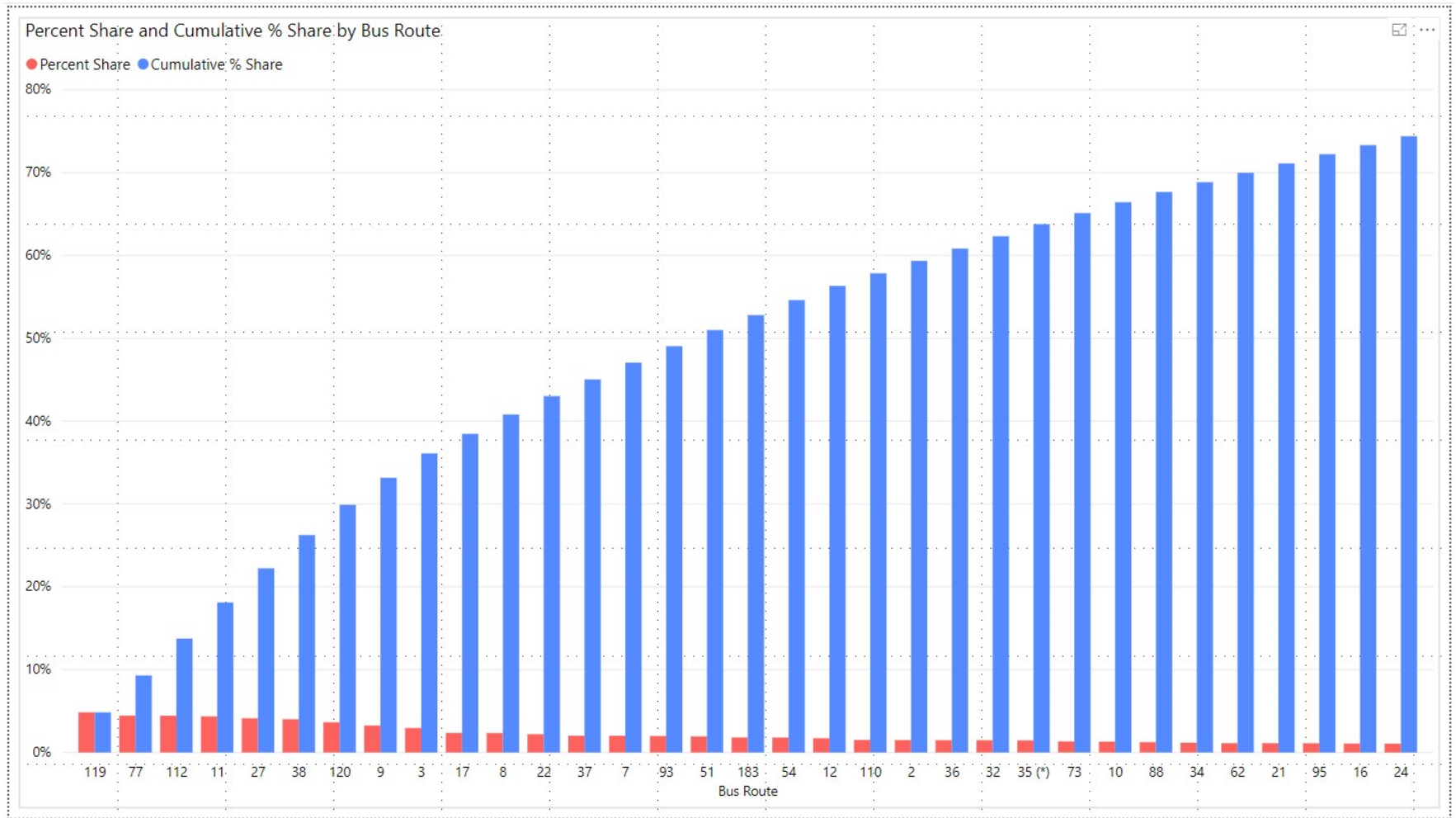
(\*) The following routes are operated under contract: 1, 29, 35, 46, 56, 71, 72, 82, 101-A, 115, 155, 202, 210, 211, 212, 217, 246, 248, 254, 267, 272, 286 and 344. Dade-Monroe routes 301 and 302 as well as six Lifeline routes are also under contracted operation.

## Bus Routes as Ranked by Percentage of Average Weekday Ridership

Rank	Route	Average Weekday	Percent Share	Cumul Pct Share	Rank	Route	Average Weekday	Percent Share	Cumul Pct Share	Rank	Route	Average Weekday	Percent Share	Cumul Pct Share
1	119	7,799	4.8%	4.8%	36	137	1,644	1.0%	77.5%	71	287	332	0.2%	98.1%
2	77	7,175	4.5%	9.3%	37	107	1,635	1.0%	78.5%	72	79	318	0.2%	98.3%
3	112	7,161	4.4%	13.7%	38	102	1,617	1.0%	79.5%	73	210	297	0.2%	98.4%
4	11	7,023	4.4%	18.1%	39	150	1,604	1.0%	80.5%	74	1	290	0.2%	98.6%
5	27	6,639	4.1%	22.2%	40	19	1,578	1.0%	81.5%	75	295	233	0.1%	98.8%
6	38	6,462	4.0%	26.3%	41	87	1,544	1.0%	82.5%	76	296	228	0.1%	98.9%
7	120	5,866	3.6%	29.9%	42	75	1,508	0.9%	83.4%	77	200	160	0.1%	99.0%
8	9	5,248	3.3%	33.2%	43	207	1,474	0.9%	84.3%	78	101	156	0.1%	99.1%
9	3	4,746	2.9%	36.1%	44	99	1,449	0.9%	85.2%	79	115	144	0.1%	99.2%
10	17	3,796	2.4%	38.5%	45	208	1,422	0.9%	86.1%	80	136	142	0.1%	99.3%
11	8	3,772	2.3%	40.8%	46	297	1,300	0.8%	86.9%	81	202	136	0.1%	99.4%
12	22	3,559	2.2%	43.0%	47	135	1,291	0.8%	87.7%	82	267	122	0.1%	99.4%
13	37	3,262	2.0%	45.0%	48	52	1,266	0.8%	88.5%	83	248	116	0.1%	99.5%
14	7	3,254	2.0%	47.1%	49	105	1,125	0.7%	89.2%	84	246	90	0.1%	99.6%
15	93	3,199	2.0%	49.0%	50	31	1,044	0.6%	89.9%	85	344	88	0.1%	99.6%
16	51	3,127	1.9%	51.0%	51	204	1,034	0.6%	90.5%	86	286	75	0.0%	99.7%
17	183	2,917	1.8%	52.8%	52	39	937	0.6%	91.1%	87	211	66	0.0%	99.7%
18	54	2,908	1.8%	54.6%	53	104	934	0.6%	91.7%	88	302	66	0.0%	99.8%
19	12	2,766	1.7%	56.3%	54	252	858	0.5%	92.2%	89	217	59	0.0%	99.8%
20	110	2,447	1.5%	57.8%	55	42	848	0.5%	92.7%	90	82	54	0.0%	99.8%
21	2	2,416	1.5%	59.3%	56	113	793	0.5%	93.2%	91	55	46	0.0%	99.9%
22	36	2,395	1.5%	60.8%	57	288	782	0.5%	93.7%	92	155	44	0.0%	99.9%
23	32	2,384	1.5%	62.3%	58	301	737	0.5%	94.2%	93	212	38	0.0%	99.9%
24	35	2,354	1.5%	63.8%	59	72	722	0.4%	94.6%	94	500	30	0.0%	99.9%
25	73	2,153	1.3%	65.1%	60	29	669	0.4%	95.0%	95	SL	26	0.0%	99.9%
26	10	2,105	1.3%	66.4%	61	277	601	0.4%	95.4%	96	46	25	0.0%	100.0%
27	88	2,001	1.2%	67.7%	62	71	563	0.3%	95.7%	97	AS	23	0.0%	100.0%
28	34	1,900	1.2%	68.8%	63	272	526	0.3%	96.1%	98	254	15	0.0%	100.0%
29	62	1,825	1.1%	70.0%	64	238	450	0.3%	96.4%	99	132	14	0.0%	100.0%
30	21	1,817	1.1%	71.1%	65	108	435	0.3%	96.6%	100	KC	14	0.0%	100.0%
31	95	1,803	1.1%	72.2%	66	195	415	0.3%	96.9%	101	GH	6	0.0%	100.0%
32	16	1,749	1.1%	73.3%	67	57	407	0.3%	97.1%	102	RS	5	0.0%	100.0%
33	24	1,735	1.1%	74.4%	68	103	403	0.3%	97.4%					
34	40	1,713	1.1%	75.5%	69	196	382	0.2%	97.6%					
35	33	1,687	1.0%	76.5%	70	56	369	0.2%	97.9%					
										Total Boardings 160,982 100.0% contracted				

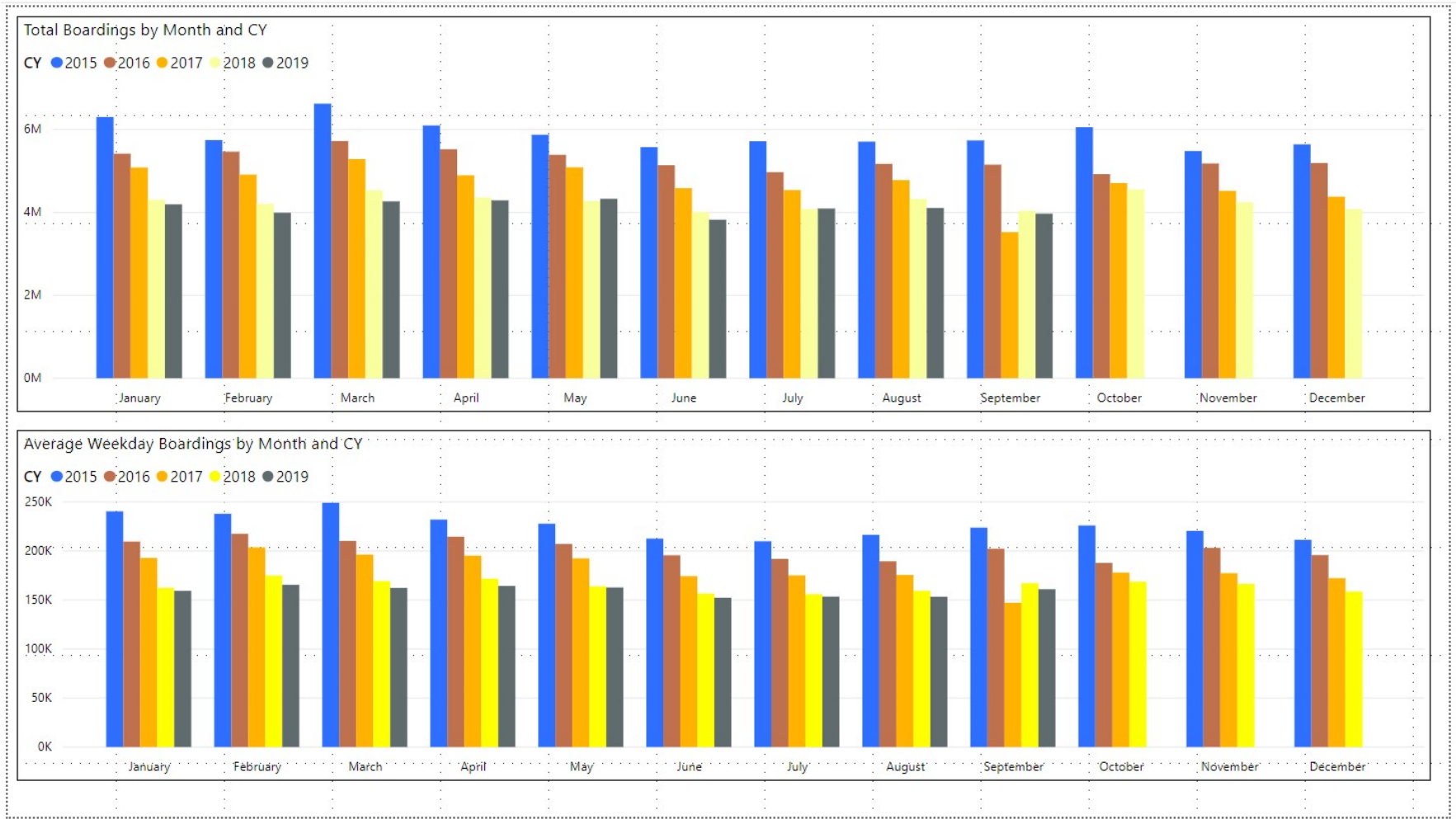
(1) Includes the five Lifeline Shuttles that operate on weekdays: Ahepa, Green Hills, Kings Creek, Robert Sharp and Sierra Lakes.

# METROBUS CUMULATIVE PERCENTAGE RIDERSHIP SHARE BY ROUTE (TOP 75%) POWER BI™ VISUALIZATION



(\*) Contracted route

# TOTAL MONTHLY AND AVERAGE WEEKDAY RIDERSHIP YEAR OVER YEAR COMPARISON CHARTS – METROBUS POWER BI™ VISUALIZATION





# **“TOP 5 / BOTTOM 5” BUS ROUTES AVERAGE WEEKDAY RIDERSHIP PERFORMANCE YEAR OVER YEAR COMPARISONS**

Route	Sep-19	Sep-18	Absolute Delta (1)	Percent Delta
<b>120 - BEACH MAX</b>	5,866	5,305	561	10.6%
<b>36</b>	2,395	2,076	318	15.3%
<b>208 (8st) - LITTLE HAVANA CIRC (†)</b>	1,422	1,151	270	23.5%
<b>102 - B</b>	1,617	1,384	233	16.8%
<b>207 (7st) - LITTLE HAVANA CIRC</b>	1,474	1,276	198	15.5%
<b>7 (††)</b>	3,254	4,689	-1,435	-30.6%
<b>11</b>	7,023	7,632	-609	-8.0%
<b>22</b>	3,559	4,003	-444	-11.1%
<b>77</b>	7,175	7,492	-317	-4.2%
<b>27</b>	6,639	6,940	-301	-4.3%

(1) Averages rounded to the nearest boarding

(†) Detailed analysis of data performed by run for this route suggests NextFare System data recording significantly more passengers this year than in September 2018.

(††) Detailed analysis of data performed by run for this route suggests NextFare System data route allocation errors occurring a year ago as a primary contribution to the decline seen from September 2018 to 2019.

# METROBUS PARKING PATRONAGE SUMMARY

## September 2019

PARK-RIDE LOT	ACTUAL AVAILABLE SPACES	ACTUAL OCCUPANCY	PERCENT OCCUPANCY
Transitway / SW 152nd St	200	200	100%
Transitway / SW 168th St	149	149	100%
Transitway / SW 112 Ave (Target)	450	412	92%
Transitway / SW 244th St	95	95	100%
Transitway / SW 296th St	139	123	88%
Transitway / SW 344th St	248	152	61%
Coral Reef Drive 117/ Turnpike	95	51	54%
Golden Glades - East Lot	535	535	100%
Golden Glades - West Lot	1,007	189	19%
Hammocks Town Center (SW 152 Ave / SW 104 St)	50	50	100%
Kendall Dr./SW 127th Ave	161	30	19%
West Kendall Transit Term (Kendall Dr / SW162 Ave)	40	30	75%
NW 7th Avenue Transit Village (NW 7 Ave / NW 62 St)	25	24	96%
Miami Gardens Dr. / NW 73rd Ave	136	7	5%
I-75 / Miami Gardens Dr (effective June 2019)	298	0	0%
<b>TOTAL</b>	<b>3,628</b>	<b>2,047</b>	<b>56%</b>

# Metrorail



September 2019

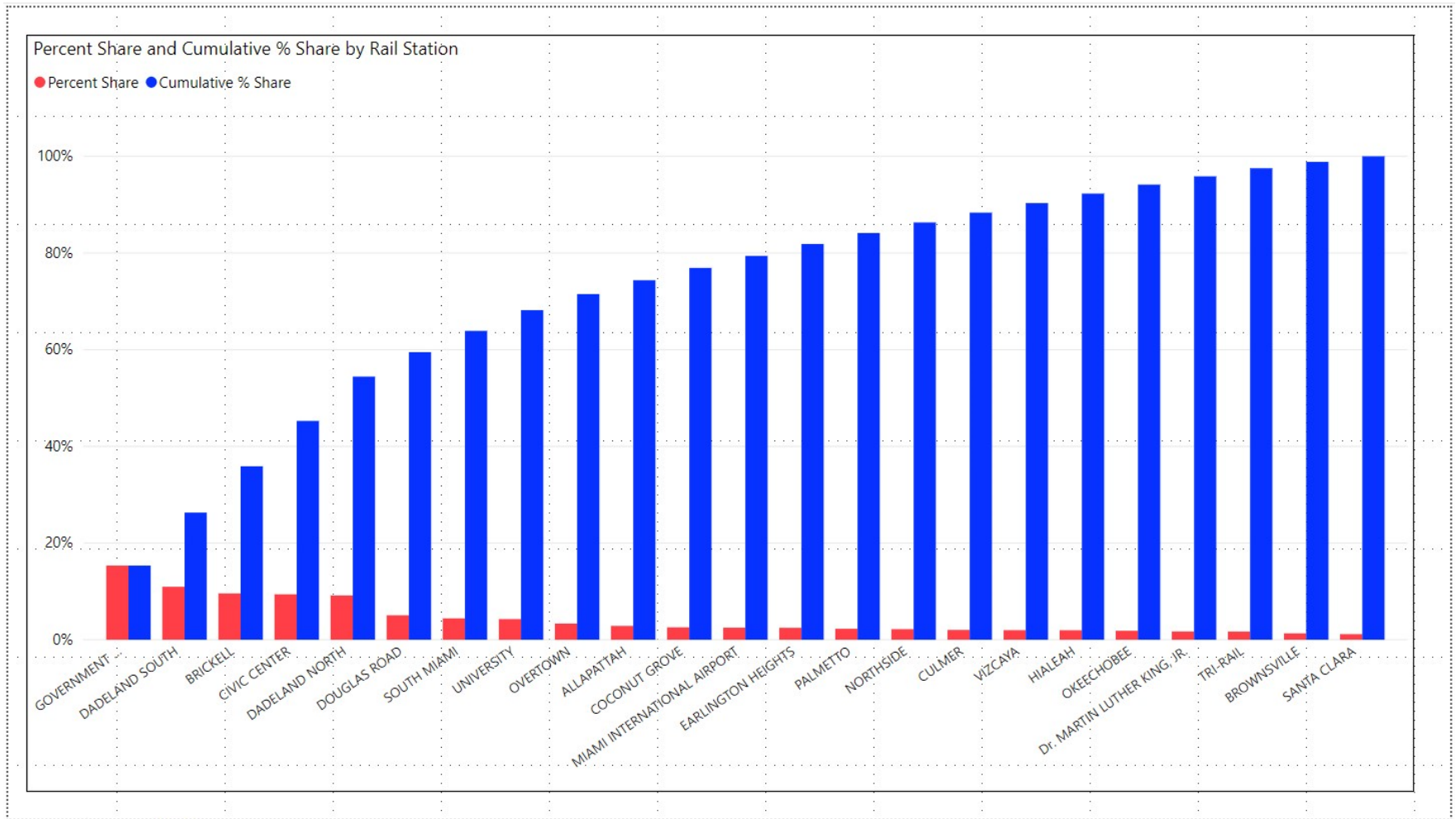
## METRORAIL MONTHLY AND AVERAGE DAILY BOARDINGS BY STATION

	Average Weekday	Average Weekday	Percent Change	Average Saturday	Average Saturday	Percent Change	Average Sunday	Average Sunday	Percent Change	Total Monthly	Total Monthly	Percent Change
STATIONS	Sep-19	Sep-18	19 vs 18	Sep-19	Sep-18	19 vs 18	Sep-19	Sep-18	19 vs 18	Sep-19	Sep-18	19 vs 18
ALLAPATTAH	1,771	1,965	-9.9%	957	1,083	-11.7%	676	779	-13.2%	43,214	47,363	-8.8%
BRICKELL	5,931	6,723	-11.8%	2,395	2,922	-18.1%	1,799	2,264	-20.5%	138,586	155,469	-10.9%
BROWNSVILLE	811	916	-11.4%	507	562	-9.8%	381	430	-11.3%	20,472	22,747	-10.0%
CIVIC CENTER	5,821	5,125	13.6%	895	939	-4.7%	704	734	-4.1%	124,087	106,515	16.5%
COCONUT GROVE	1,584	1,748	-9.4%	748	936	-20.1%	577	692	-16.7%	37,962	41,884	-9.4%
CULMER	1,259	1,369	-8.1%	614	720	-14.8%	455	541	-15.9%	30,279	32,787	-7.6%
DADELAND NORTH	5,673	6,218	-8.8%	1,690	2,112	-20.0%	1,252	1,534	-18.4%	127,402	137,525	-7.4%
DADELAND SOUTH	6,793	7,432	-8.6%	2,411	2,817	-14.4%	1,800	2,109	-14.7%	155,912	167,608	-7.0%
DOUGLAS ROAD	3,133	3,727	-15.9%	1,130	1,339	-15.6%	772	947	-18.4%	71,713	83,002	-13.6%
DR. MARTIN LUTHER KING, JR.	1,054	1,304	-19.1%	551	706	-22.0%	403	500	-19.3%	25,611	31,252	-18.1%
EARLINGTON HEIGHTS	1,525	1,736	-12.1%	851	933	-8.8%	636	717	-11.2%	37,580	41,851	-10.2%
GOVERNMENT CENTER	9,503	10,548	-9.9%	3,333	3,830	-13.0%	2,349	2,807	-16.3%	216,868	235,762	-8.0%
HIALEAH	1,218	1,399	-13.0%	556	651	-14.6%	396	470	-15.8%	28,867	32,622	-11.5%
MIAMI INTERNATIONAL AIRPORT	1,542	1,657	-6.9%	1,132	1,325	-14.6%	1,119	1,357	-17.5%	41,945	46,266	-9.3%
NORTHSIDE	1,355	1,620	-16.4%	798	1,054	-24.3%	623	774	-19.4%	33,874	40,486	-16.3%
OKEECHOBEE	1,148	1,181	-2.8%	363	398	-8.7%	227	261	-13.0%	25,733	25,981	-1.0%
OVERTOWN / ARENA	2,068	2,171	-4.7%	493	552	-10.8%	379	467	-18.8%	45,480	46,712	-2.6%
PALMETTO	1,402	1,461	-4.0%	382	378	0.9%	228	242	-5.5%	30,873	31,100	-0.7%
SANTA CLARA	718	914	-21.5%	356	451	-21.1%	229	276	-17.2%	17,109	21,262	-19.5%
SOUTH MIAMI	2,736	2,990	-8.5%	1,055	1,347	-21.7%	725	900	-19.4%	63,104	68,802	-8.3%
TRI-RAIL	1,045	1,131	-7.6%	471	559	-15.8%	412	423	-2.6%	25,026	26,825	-6.7%
UNIVERSITY	2,643	2,547	3.8%	608	668	-9.0%	397	448	-11.4%	57,513	54,324	5.9%
VIZCAYA	1,228	1,394	-11.9%	470	613	-23.4%	365	424	-13.9%	28,516	31,943	-10.7%
<b>TOTAL</b>	<b>61,961</b>	<b>67,273</b>	<b>-7.9%</b>	<b>22,761</b>	<b>26,895</b>	<b>-15.4%</b>	<b>16,905</b>	<b>20,096</b>	<b>-15.9%</b>	<b>1,427,726</b>	<b>1,530,088</b>	<b>-6.7%</b>

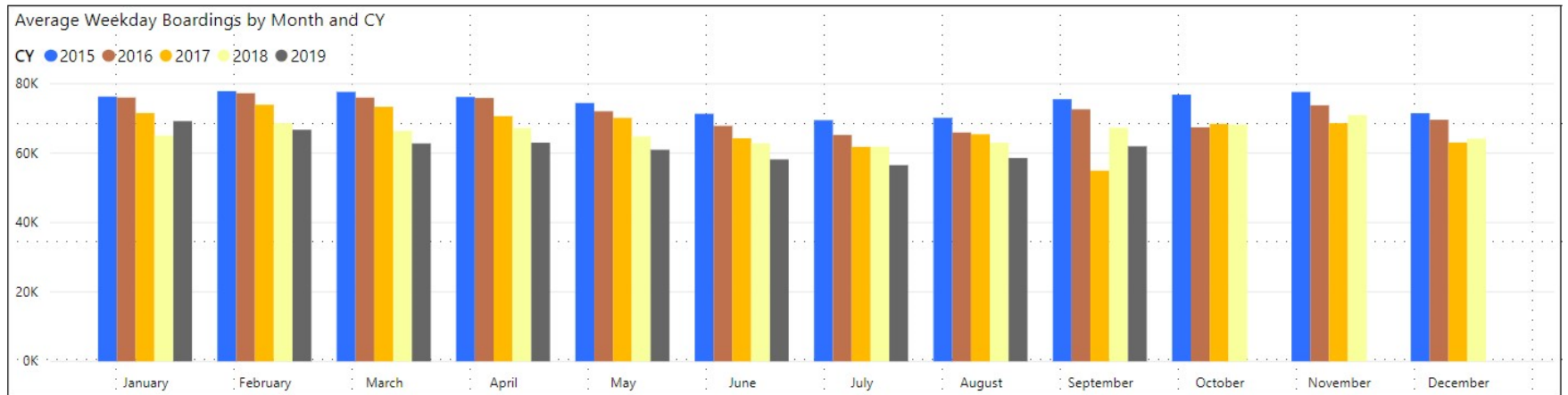
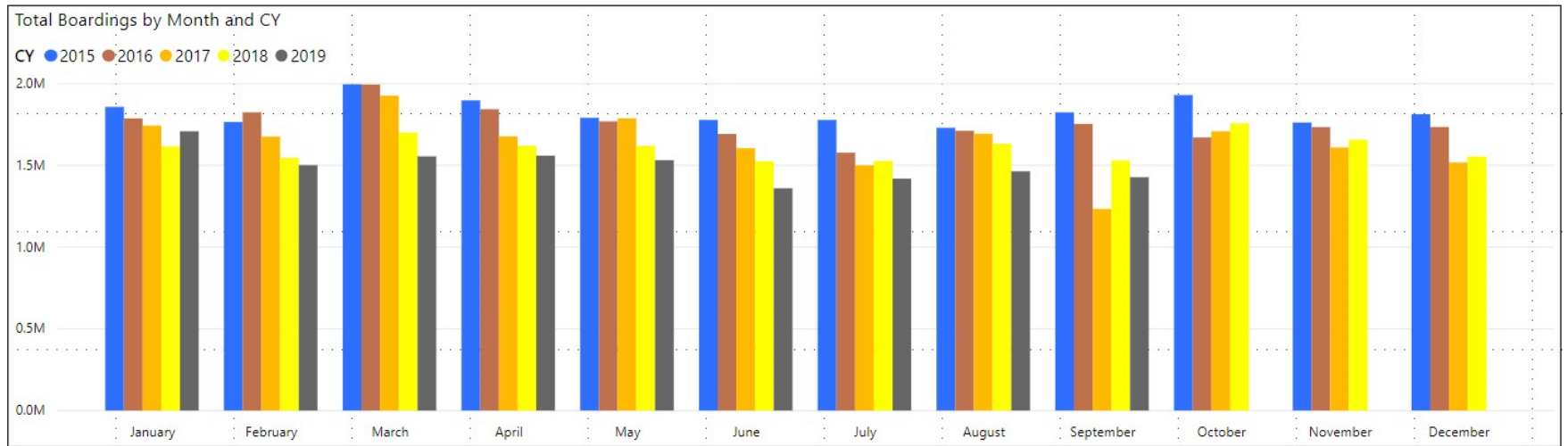
## METRORAIL HOLIDAY BOARDINGS BY STATION

	Labor Day	Labor Day	Percent Change
STATIONS	2018	2019	19 vs 18
ALLAPATTAH	717	578	-19.4%
BRICKELL	1,809	1,398	-22.7%
BROWNSVILLE	387	312	-19.4%
CIVIC CENTER	777	575	-26.0%
COCONUT GROVE	534	411	-23.0%
CULMER	471	377	-20.0%
DADELAND NORTH	1,160	921	-20.6%
DADELAND SOUTH	1,762	1,412	-19.9%
DOUGLAS ROAD	758	663	-12.5%
DR. MARTIN LUTHER KING, JR.	453	305	-32.7%
EARLINGTON HEIGHTS	617	488	-20.9%
GOVERNMENT CENTER	2,178	1,728	-20.7%
HIALEAH	425	303	-28.7%
MIAMI INTERNATIONAL AIRPORT	1,377	981	-28.8%
NORTHSIDE	565	469	-17.0%
OKEECHOBEE	252	188	-25.4%
OVERTOWN / ARENA	373	251	-32.7%
PALMETTO	250	165	-34.0%
SANTA CLARA	261	190	-27.2%
SOUTH MIAMI	764	544	-28.8%
TRI-RAIL	428	173	-59.6%
UNIVERSITY	352	239	-32.1%
VIZCAYA	279	261	-6.5%
<b>TOTAL</b>	<b>16,949</b>	<b>12,932</b>	<b>-23.7%</b>

## METRORAIL CUMULATIVE PERCENTAGE RIDERSHIP SHARE POWER BI™ VISUALIZATION



# TOTAL MONTHLY AND AVERAGE WEEKDAY RIDERSHIP YEAR OVER YEAR COMPARISON CHARTS – METRORAIL POWER BI™ VISUALIZATION



# **“TOP 5 / BOTTOM 5” RAIL STATIONS AVERAGE WEEKDAY RIDERSHIP PERFORMANCE YEAR OVER YEAR COMPARISONS**

Station	Sep-19	Sep-18	Absolute Delta (1)	Percent Delta
CIVIC CENTER	5,821	5,125	696	13.6%
UNIVERSITY	2,643	2,547	96	3.8%
OKEECHOBEE	1,148	1,181	-33	-2.8%
PALMETTO	1,402	1,461	-59	-4.0%
TRI-RAIL	1,045	1,131	-85	-7.6%
GOVERNMENT CENTER	9,503	10,548	-1,044	-9.9%
BRICKELL	5,931	6,723	-792	-11.8%
DADELAND SOUTH	6,793	7,432	-640	-8.6%
DOUGLAS ROAD	3,133	3,727	-594	-15.9%
DADELAND NORTH	5,673	6,218	-544	-8.8%

- (1) Averages rounded to the nearest boarding; only two stations registered gains in September 2019.
- (2) For the purposes of average weekday ridership computation, the Tuesday following Labor Day is considered a regular weekday; this year, however, ridership was uniformly much lower across the Metrorail system than in previous years' such Tuesdays. There were no apparent data or system-related causes found for the decrease, which accounts for an approximately two percentage points loss per station, and system-wide.



## METRORAIL PARKING PATRONAGE SUMMARY

### September 2019

PARK-RIDE LOT	ACTUAL CAPACITY (1)	ACTUAL OCCUPANCY (2)	PERCENT OCCUPANCY
DADELAND SOUTH	1,280	1,180	92%
DADELAND NORTH	1,963	1,913	97%
SOUTH MIAMI	1,081	753	70%
UNIVERSITY	260	255	98%
DOUGLAS ROAD	190	171	90%
COCONUT GROVE	100	93	93%
VIZCAYA	120	75	62%
CULMER	40	6	14%
SANTA CLARA	61	38	62%
ALLAPATTAH	74	12	17%
EARLINGTON HEIGHTS	361	145	40%
BROWNSVILLE	100	34	34%
DR. MARTIN LUTHER KING JR. (MDT)	62	50	80%
DR. MARTIN LUTHER KING JR. (GARAGE)	631	194	31%
NORTHSIDE	197	77	39%
HIALEAH	338	113	33%
OKEECHOBEE	1,398	327	23%
PALMETTO	700	412	59%
<b>TOTAL</b>	<b>8,956</b>	<b>5,846</b>	<b>65%</b>

Note: No parking at Brickell, Government Center, Overtown, Civic Center, and Metrorail-Trirail Transfer stations.

- (1) Number of spaces could vary each week; shown are available spaces during final week of month.  
 (2) Averages rounded to nearest unit.

# Metromover



September 2019

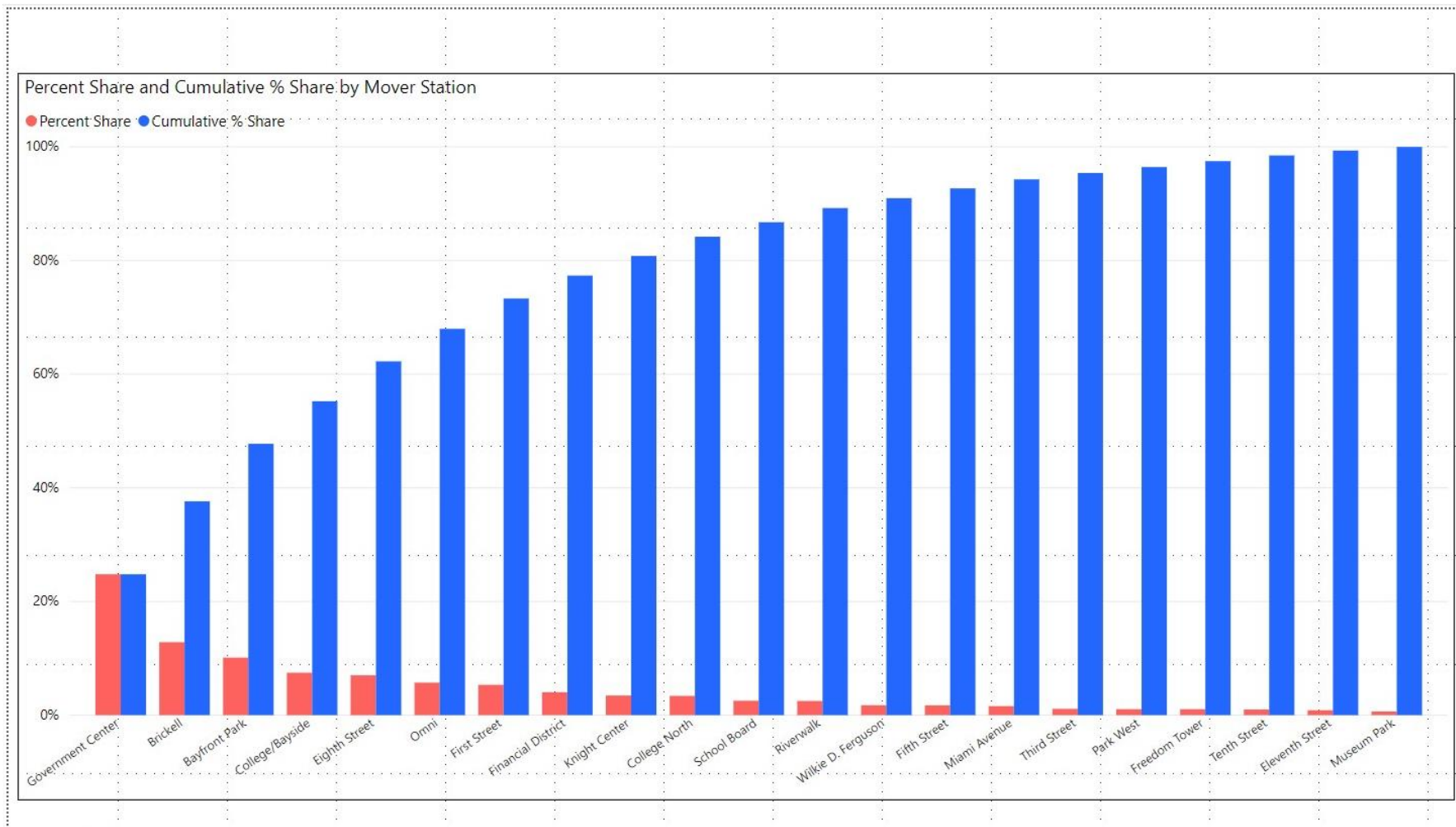
## METROMOVER MONTHLY AND AVERAGE DAILY BOARDINGS BY STATION

	Average Weekday	Average Weekday	Percent Change	Average Saturday	Average Saturday	Percent Change	Average Sunday	Average Sunday	Percent Change	Labor Day	Labor Day	Percent Change	Total Monthly	Total Monthly	Percent Change
STATIONS (1)	Sep-19	Sep-18	19 vs 18	Sep-19	Sep-18	19 vs 18	Sep-19	Sep-18	19 vs 18	Sep-19	Sep-18	19 vs 18	Sep-19	Sep-18	19 vs 18
School Board	718	773	-7.1%	559	596	-6.1%	495	556	-11.0%	360	284	26.8%	19,440	20,736	-6.3%
Omni	1,623	1,311	23.8%	1,262	1,038	21.6%	1,015	778	30.4%	616	386	59.6%	43,195	34,371	25.7%
Museum Park	183	63	188.9%	253	80	214.1%	192	66	190.6%	117	38	207.9%	5,741	1,972	191.1%
Eleventh Street	245	292	-15.9%	245	248	-1.2%	191	193	-1.1%	99	111	-10.8%	6,943	7,865	-11.7%
Park West	297	284	4.5%	317	283	11.8%	194	166	17.0%	98	20	390.0%	8,279	7,668	8.0%
Freedom Tower	297	342	-13.2%	402	451	-10.9%	236	229	2.9%	62	90	-31.1%	8,786	9,987	-12.0%
Government Center	7,030	7,528	-6.6%	2,020	2,050	-1.5%	1,493	1,535	-2.7%	997	1,188	-16.1%	157,141	162,143	-3.1%
Miami Avenue	450	429	5.0%	282	270	4.5%	226	225	0.7%	217	198	9.6%	11,477	10,816	6.1%
Third Street	315	324	-2.9%	226	235	-3.8%	174	189	-7.8%	96	165	-41.8%	8,161	8,436	-3.3%
Knight Center	981	934	5.0%	447	394	13.5%	301	288	4.3%	271	224	21.0%	23,178	21,386	8.4%
Bayfront Park	2,871	2,886	-0.5%	1,806	1,985	-9.0%	1,503	1,592	-5.6%	929	797	16.6%	73,088	73,525	-0.6%
First Street (2)	1,512	1,577	-4.1%	1,004	1,189	-15.6%	817	972	-16.0%		590		38,330	41,351	-7.3%
College/Bayside	2,117	2,325	-8.9%	1,327	1,480	-10.4%	1,081	1,140	-5.2%	630	633	-0.5%	53,678	57,906	-7.3%
College North	962	1,010	-4.7%	295	315	-6.5%	185	296	-37.3%	171	229	-25.3%	21,520	22,467	-4.2%
Wilkie D. Ferguson (2)	494	468	5.6%	266	249	6.9%	233	209	11.7%	121			12,237	11,182	9.4%
Riverwalk	707	892	-20.8%	422	490	-13.8%	315	366	-14.0%	263	308	-14.6%	17,665	21,539	-18.0%
Fifth Street	490	132	270.4%	250	173	44.5%	198	89	122.5%	161	46	250.0%	11,944	3,868	208.8%
Eighth Street	1,990	1,891	5.3%	1,581	1,477	7.0%	1,184	1,038	14.1%	764	732	4.4%	52,802	49,225	7.3%
Tenth Street	281	864	-67.5%	182	559	-67.5%	144	417	-65.4%	109	313	-65.2%	7,176	21,619	-66.8%
Brickell	3,639	3,242	12.3%	2,241	1,952	14.8%	1,787	1,375	30.0%	1,073	950	12.9%	91,761	79,177	15.9%
Financial District	1,145	1,331	-14.0%	557	668	-16.6%	403	470	-14.2%	199	282	-29.4%	27,337	31,266	-12.6%
<b>TOTAL</b>	<b>28,346</b>	<b>28,898</b>	<b>-1.9%</b>	<b>15,942</b>	<b>16,183</b>	<b>-1.5%</b>	<b>12,368</b>	<b>12,188</b>	<b>1.5%</b>	<b>7,353</b>	<b>7,584</b>	<b>-3.0%</b>	<b>699,879</b>	<b>698,505</b>	<b>0.2%</b>

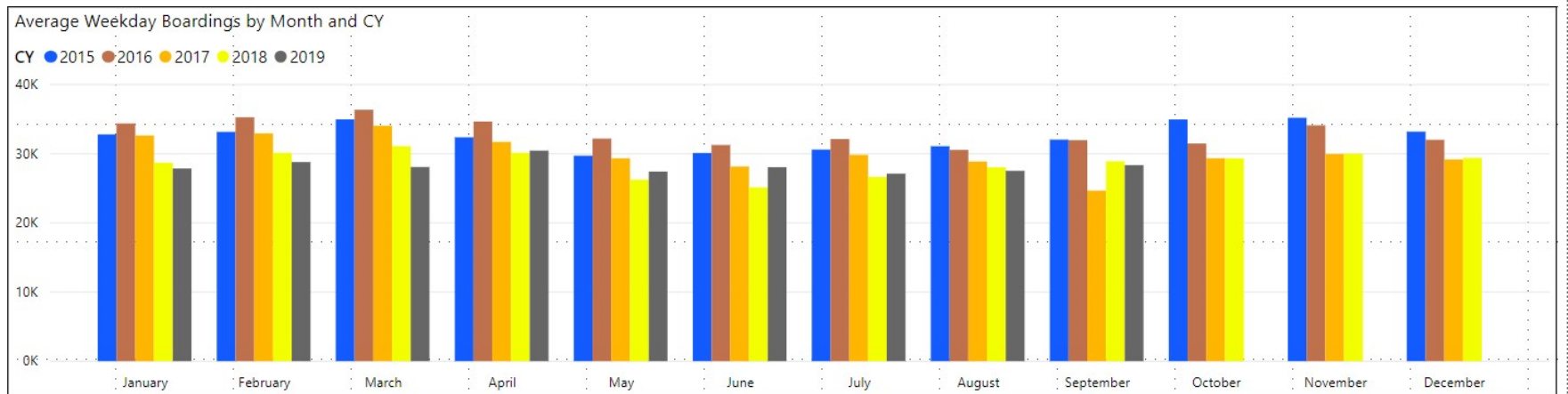
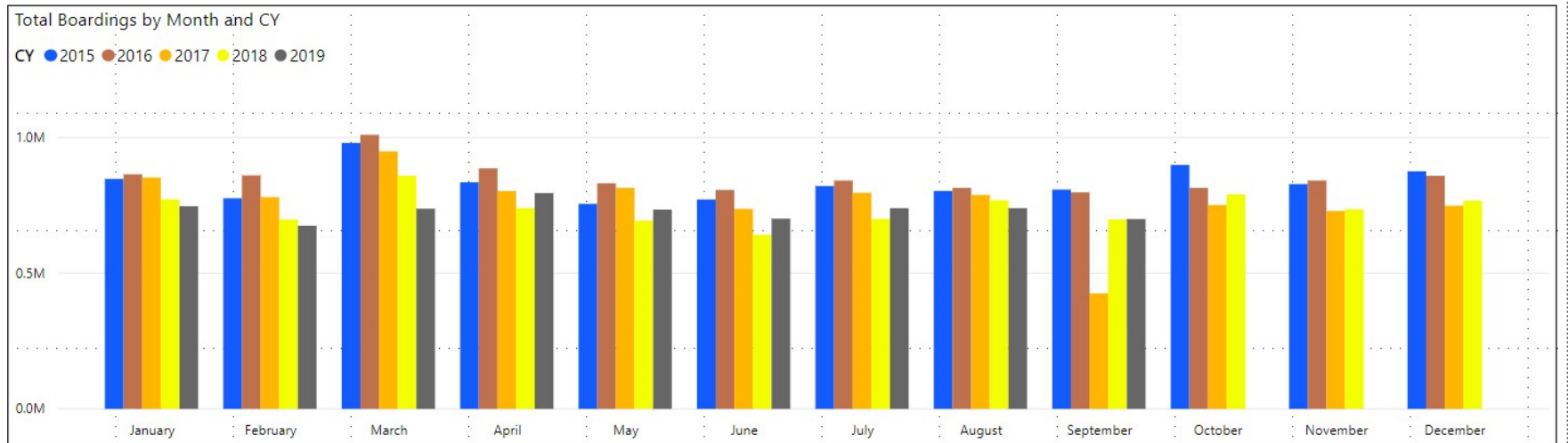
(1) Boardings at some stations contain estimates based on other data within September 2019

(2) No data reported at First Street on Labor Day 2019 and at Wilkie Ferguson on Labor Day 2018

## METROMOVER CUMULATIVE PERCENTAGE RIDERSHIP SHARE POWER BI™ VISUALIZATION



# TOTAL MONTHLY AND AVERAGE WEEKDAY RIDERSHIP YEAR OVER YEAR COMPARISON CHARTS – METROMOVER POWER BI™ VISUALIZATION



## “TOP 5 / BOTTOM 5” MOVER STATIONS AVERAGE WEEKDAY RIDERSHIP PERFORMANCE YEAR OVER YEAR COMPARISONS

Station	Sep-19	Sep-18	Absolute Delta (1)	Percent Delta
Brickell	3,639	3,242	398	12.3%
Fifth Street (2)	490	132	357	270.4%
Omni	1,623	1,311	312	23.8%
Museum Park (2)	183	63	119	188.9%
Eighth Street	1,990	1,891	99	5.3%
Tenth Street (2)	281	864	-584	-67.5%
Government Center	7,030	7,528	-498	-6.6%
College/Bayside	2,117	2,325	-208	-8.9%
Financial District	1,145	1,331	-187	-14.0%
Riverwalk	707	892	-185	-20.8%

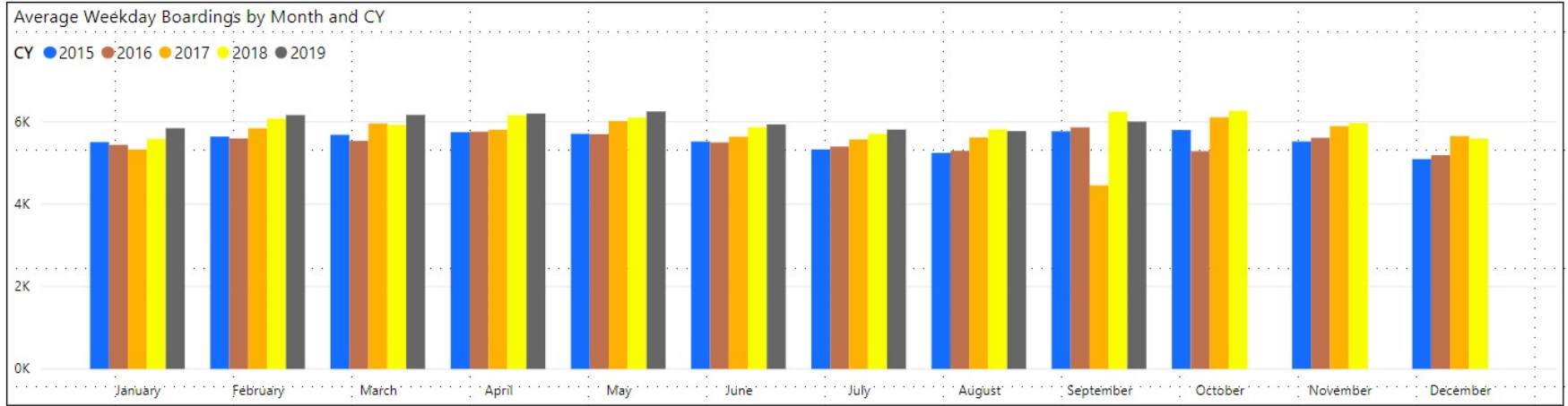
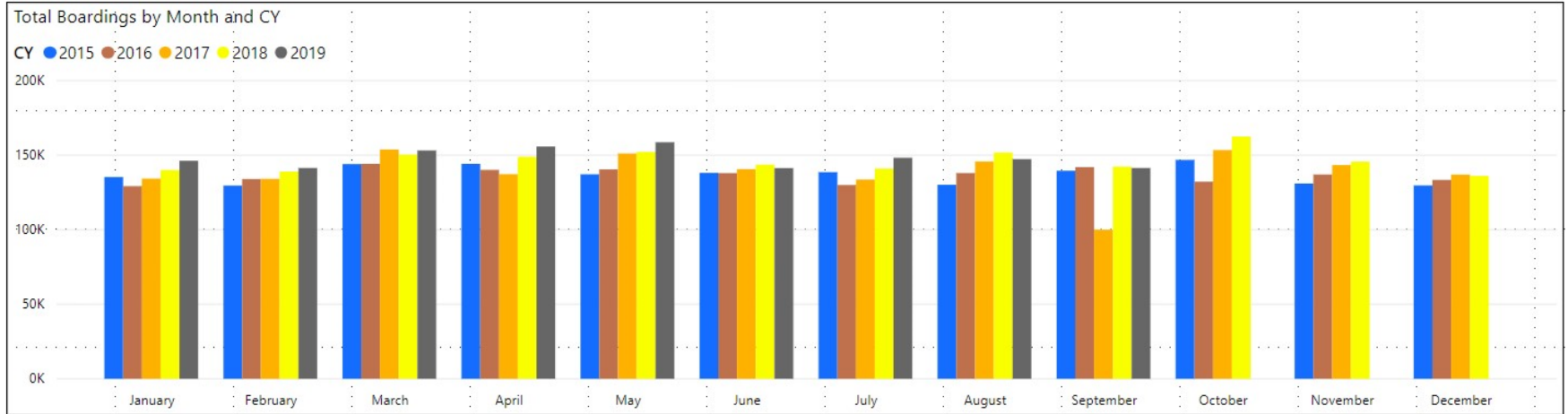
(1) Averages rounded to the nearest boarding

(2) Automatic Passenger Counter (APC) data at Fifth Street and Museum Park were uniformly much lower in September 2018 than this month, suggesting possible sensor malfunctions and resulting loss of data at those two stations a year ago. Tenth Street data were much lower this month than they were in September 2018, pointing again to APC system malfunctions including ongoing sensor realignment issues at that station.

## Special Transportation Services



# **TOTAL MONTHLY AND AVERAGE WEEKDAY RIDERSHIP YEAR OVER YEAR COMPARISON CHARTS – SPECIAL TRANSPORTATION SERVICES (S.T.S.) POWER BI™ VISUALIZATION**



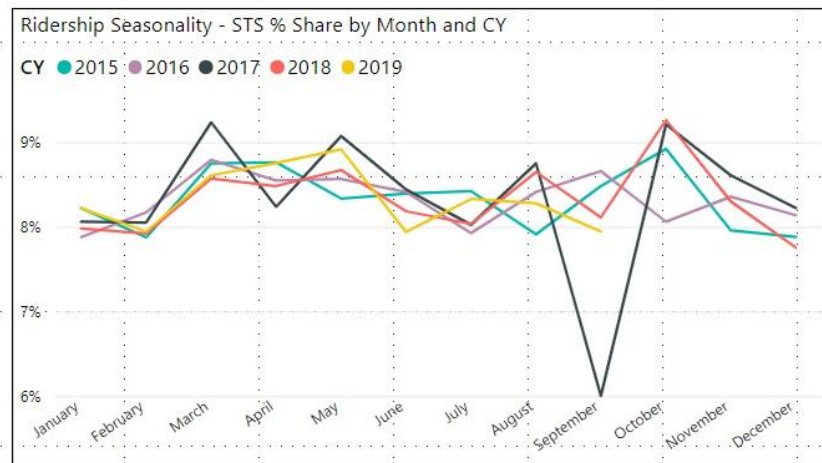
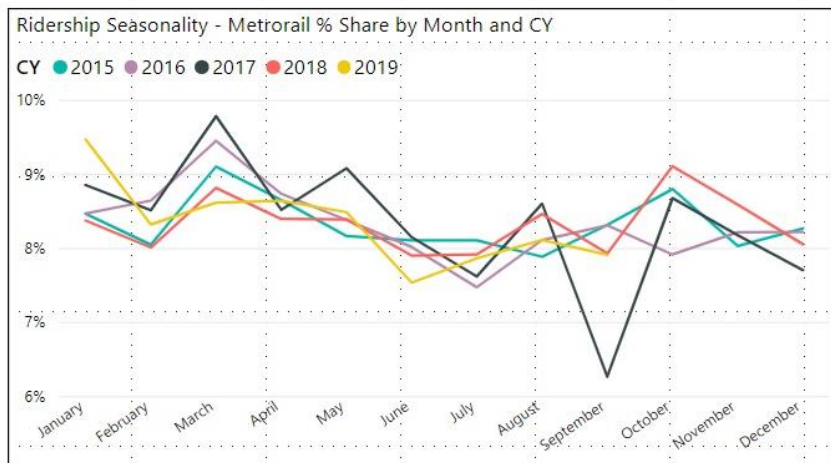
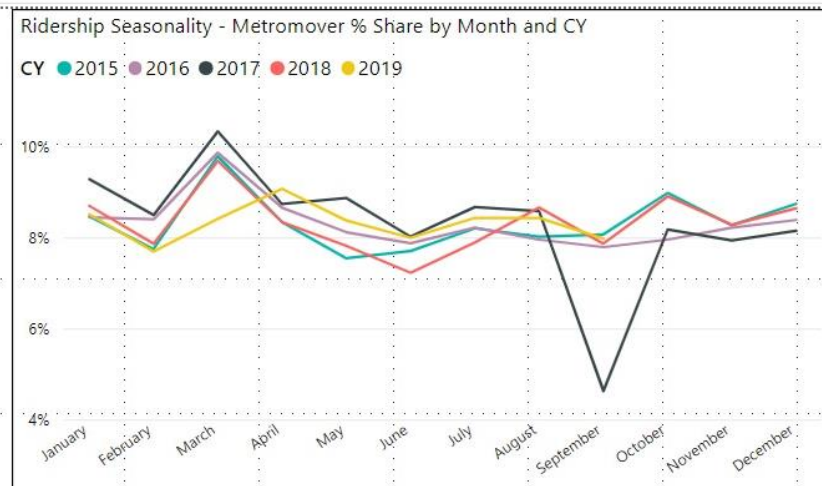
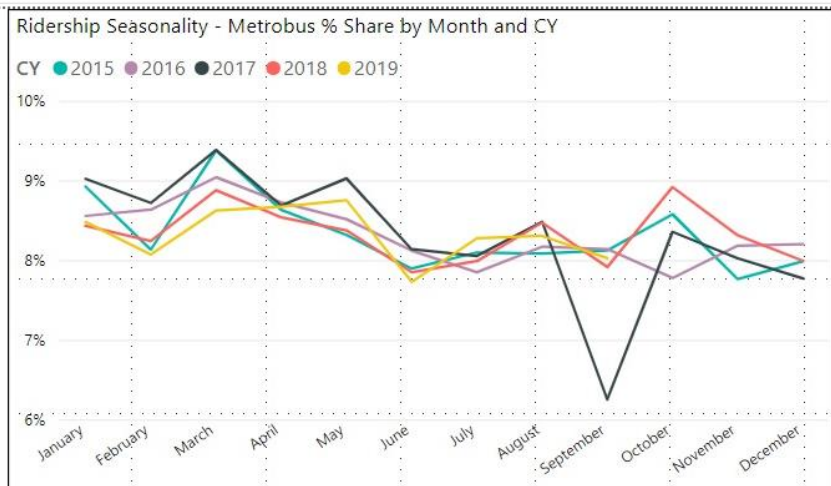


## Ridership Seasonality



September 2019

# RIDERSHIP SEASONALITY – PERCENT RIDERSHIP SHARE BY MONTH AND CALENDAR YEAR FOR EACH MODE POWER BI™ VISUALIZATION



Note: the prominent dip seen in September 2017 is due to Hurricane Irma.