



TRANSPORTATION AND PUBLIC WORKS

RIDERSHIP TECHNICAL REPORT

Division of Performance and Materials Management



November 2019

Table of Contents

<i>Table of Contents</i>	2-3
All Modes Overview	4
Total Monthly Weekday, Saturday and Sunday Monthly Boardings By Mode	5
Average Weekday, Saturday and Sunday Boardings by Mode	6
All-Modes Combined Total Monthly Ridership Comparisons By Fiscal Year	7
All Modes Combined Total Monthly and Average Weekday Ridership – Year over Year Comparison Charts	8
Metrobus Total Monthly Ridership Comparisons by Fiscal Year	9
Metrorail Total Monthly Ridership Comparisons by Fiscal Year	10
Metromover Total Monthly Ridership Comparisons by Fiscal Year	11
STS Total Monthly Ridership Comparisons by Fiscal Year	12
Average Weekday Ridership – Modal Splits	13
Metrobus	14
Monthly and Average Daily Bus Boardings by Route	15-18
Metrobus Holiday Boardings By Route	19-21
Bus Ridership by Service Type	22-23
Bus Routes as Ranked by Percentage of Average Weekday Ridership	24
Metrobus Cumulative Percentage Average Weekday Ridership Share by Route (Top 75%)	25
Total Monthly and Average Weekday Rail Ridership – Year over Year Comparison Charts	26

Table of Contents (continued)

Metrobus (Continued)

Bus “Top 5 / Bottom 5” Routes Average Weekday Ridership Performance	27
Metrobus Parking Patronage Summary	28

Metrorail 29

Monthly and Average Daily Rail Boardings by Station	30
Metrorail Holiday Boardings by Station	31
Metrorail Cumulative Percentage Average Weekday Ridership Share	32
Total Monthly and Average Weekday Rail Ridership – Year over Year Comparison Charts	33
“Top 5 / Bottom 5” Stations Average Weekday Ridership Performance	34
Metrorail Parking Patronage Summary	35
Metrorail A.M. and P.M. Peak Travel Network Charts – Selected Points of Origin and Destination	36-39

Metromover 40

Monthly and Average Daily Mover Boardings by Station	41
Metromover Holiday Boardings By Station	42
Metromover Cumulative Percentage Average Weekday Ridership Share	43
Total Monthly and Average Weekday Mover Ridership – Year over Year Comparison Charts	44
“Top 5 / Bottom 5” Stations Average Weekday Ridership Performance	45

Special Transportation Services (STS) 46

Total Monthly and Average Weekday STS Ridership – Year over Year Comparison Charts	47
--	----

Ridership Seasonality 48

Ridership Seasonality – Percent Ridership Share by Month and Calendar year for Each Mode	49
--	----

All Modes Overview



TOTAL MONTHLY WEEKDAY, SATURDAY AND SUNDAY BOARDINGS BY MODE

November 2019

TRAVEL MODE	MONTH'S TOTAL WEEKDAYS RIDERSHIP	MONTH'S TOTAL SATURDAYS RIDERSHIP	MONTH'S TOTAL SUNDAYS RIDERSHIP	TOTAL MONTHLY RIDERSHIP	% CHANGE vs Nov 2018 TOTAL MONTH RIDERSHIP
METROBUS	3,334,553	500,253	362,419	4,197,225	-1.1%
METRORAIL	1,249,194	125,506	94,748	1,469,448	-11.3%
METROMOVER	625,787	98,167	75,678	799,632	8.8%
STS	119,866	12,763	11,737	144,366	-0.9%
TOTAL	5,329,400	736,689	544,582	6,610,671	-2.5%

- (1) Total Bus and STS weekday ridership includes Monday, November 11, 2019 (Veteran's Day Holiday) and Friday, November 29, 2019 (Friday-After-Thanksgiving, a County-observed holiday). Weekday ridership excludes those two holidays on Metrorail and Metromover. Ridership numbers for the two dates were respectively as follows:

Metrobus	140,061	and	130,116
Metrorail	45,294		34,335
Metromover	21,097		21,786
STS	4,367		2,268

- (2) Total Bus and STS Sunday ridership includes Thursday, November 28, 2019 (Thanksgiving Day). Sunday ridership excludes Thanksgiving for Metrorail and Metromover. Ridership on that day was as follows:

Metrobus	60,810
Metrorail	16,657
Metromover	11,370
STS	2,800

AVERAGE WEEKDAY, SATURDAY AND SUNDAY BOARDINGS BY MODE
November 2019

Travel Mode	Average Weekday (1)	Average Saturday	Average Sunday (2)	% Change Nov 2018 Weekday	% Change Nov 2018 Saturday	% Change Nov 2018 Sunday
METROBUS	166,784	100,051	72,484	0.2%	1.1%	1.5%
METRORAIL	64,976	25,101	19,523	-8.4%	-13.2%	-11.7%
METROMOVER	32,384	19,633	16,077	7.9%	9.6%	27.2%
STS	5,993	2,553	2,347	0.5%	9.4%	6.4%
Totals	270,137	147,338	110,431	-1.2%	-0.5%	1.9%

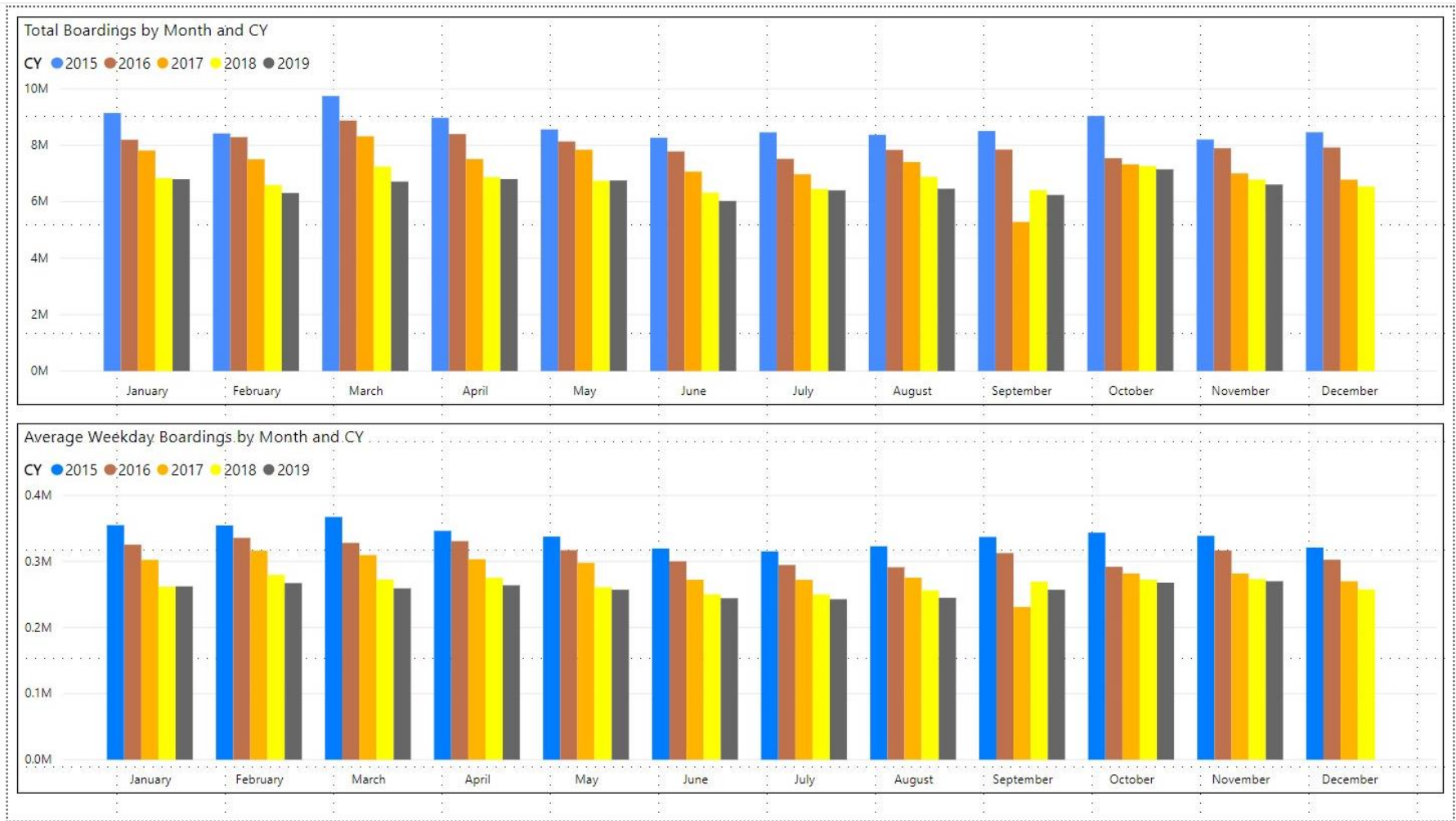
(1) Average weekday ridership includes Veterans Day and Friday-After-Thanksgiving Day for Metrobus and STS, but excludes it for Metrorail and Metromover

(2) Average Sunday ridership includes Thanksgiving Day for Metrobus and STS, but excludes it for Metrorail and Metromover

ALL-MODES COMBINED TOTAL MONTHLY RIDERSHIP COMPARISONS BY FISCAL YEAR

All Modes Month						Variances				
	FY 16	FY 17	FY 18	FY 19	FY 20	16 TO 17	17 TO 18	18 TO 19	19 TO 20	16 TO 20
Oct	9,035,169	7,543,706	7,322,886	7,265,208	7,144,116	-16.5%	-2.9%	-0.8%	-1.7%	-20.9%
Nov	8,204,872	7,894,500	7,005,032	6,783,315	6,610,671	-3.8%	-11.3%	-3.2%	-2.5%	-19.4%
Dec	8,461,341	7,919,860	6,783,192	6,538,734		-6.4%	-14.4%	-3.6%		
Jan	8,198,929	7,814,784	6,834,741	6,797,602		-4.7%	-12.5%	-0.5%		
Feb	8,286,466	7,505,125	6,591,531	6,312,033		-9.4%	-12.2%	-4.2%		
Mar	8,874,636	8,317,082	7,244,805	6,712,624		-6.3%	-12.9%	-7.3%		
Apr	8,394,885	7,513,151	6,869,802	6,802,085		-10.5%	-8.6%	-1.0%		
May	8,132,723	7,841,691	6,742,402	6,755,829		-3.6%	-14.0%	0.2%		
Jun	7,778,787	7,069,455	6,318,979	6,026,467		-9.1%	-10.6%	-4.6%		
Jul	7,520,144	6,969,807	6,449,526	6,402,110		-7.3%	-7.5%	-0.7%		
Aug	7,836,923	7,408,607	6,879,929	6,460,375		-5.5%	-7.1%	-6.1%		
Sep	7,848,211	5,284,604	6,412,945	6,240,212		-32.7%	21.4%	-2.7%		
FY Total	98,573,086	89,082,372	81,455,770	79,096,594		-9.6%	-8.6%	-2.9%		

TOTAL MONTHLY AND AVERAGE WEEKDAY RIDERSHIP YEAR OVER YEAR COMPARISON CHARTS – ALL MODES COMBINED POWER BI™ VISUALIZATION



METROBUS TOTAL MONTHLY RIDERSHIP COMPARISONS BY FISCAL YEAR

Bus	FY 16	FY 17	Variance 16 to 17	FY 18	Variance 17 to 18	FY 19	Variance 18 to 19	FY 20	Variance 19 to 20	Variance 16 to 20
Oct	6,058,615	4,925,781	-18.7%	4,709,590	-4.4%	4,554,886	-3.3%	4,507,012	-1.1%	-25.6%
Nov	5,483,456	5,181,524	-5.5%	4,522,250	-12.7%	4,245,535	-6.1%	4,197,225	-1.1%	-23.5%
Dec	5,642,424	5,192,692	-8.0%	4,380,099	-15.6%	4,081,581	-6.8%			
Jan	5,417,604	5,084,085	-6.2%	4,307,001	-15.3%	4,195,911	-2.6%			
Feb	5,467,632	4,914,307	-10.1%	4,208,811	-14.4%	3,994,019	-5.1%			
Mar	5,725,541	5,287,813	-7.6%	4,534,564	-14.2%	4,266,768	-5.9%			
Apr	5,524,501	4,895,697	-11.4%	4,360,997	-10.9%	4,291,135	-1.6%			
May	5,391,463	5,087,877	-5.6%	4,277,628	-15.9%	4,330,922	1.2%			
Jun	5,141,601	4,586,556	-10.8%	4,009,340	-12.6%	3,823,863	-4.6%			
Jul	4,970,953	4,539,259	-8.7%	4,080,664	-10.1%	4,094,906	0.3%			
Aug	5,172,498	4,780,589	-7.6%	4,326,980	-9.5%	4,109,613	-5.0%			
Sep	5,154,265	3,524,818	-31.6%	4,041,992	14.7%	3,971,220	-1.8%			
FY Total	65,150,553	58,000,998	-11.0%	51,759,916	-10.8%	49,960,359	-3.5%			

METRORAIL TOTAL MONTHLY RIDERSHIP COMPARISONS BY FISCAL YEAR

Rail	FY 16	FY 17	Variance 16 to 17	FY 18	Variance 17 to 18	FY 19	Variance 18 to 19	FY 20	Variance 19 to 20	Variance 16 to 20
Oct	1,930,352	1,670,933	-13.4%	1,708,564	2.3%	1,757,225	2.8%	1,643,166	-6.5%	-14.9%
Nov	1,761,820	1,734,267	-1.6%	1,609,888	-7.2%	1,656,929	2.9%	1,469,448	-11.3%	-16.6%
Dec	1,813,506	1,734,768	-4.3%	1,517,341	-12.5%	1,553,804	2.4%			
Jan	1,787,476	1,743,638	-2.5%	1,615,576	-7.3%	1,708,695	5.8%			
Feb	1,824,256	1,676,215	-8.1%	1,545,581	-7.8%	1,501,458	-2.9%			
Mar	1,994,796	1,926,434	-3.4%	1,700,714	-11.7%	1,554,851	-8.6%			
Apr	1,843,808	1,677,459	-9.0%	1,619,890	-3.4%	1,559,446	-3.7%			
May	1,769,327	1,787,885	1.0%	1,618,504	-9.5%	1,531,597	-5.4%			
Jun	1,692,476	1,605,234	-5.2%	1,524,311	-5.0%	1,359,966	-10.8%			
Jul	1,577,572	1,500,243	-4.9%	1,527,380	1.8%	1,419,158	-7.1%			
Aug	1,711,665	1,693,524	-1.1%	1,632,471	-3.6%	1,463,646	-10.3%			
Sep	1,753,985	1,234,135	-29.6%	1,530,088	24.0%	1,427,726	-6.7%			
Total	21,461,039	19,984,735	-6.9%	19,150,308	-4.2%	18,494,501	-3.4%			

METROMOVER TOTAL MONTHLY RIDERSHIP COMPARISONS BY FISCAL YEAR

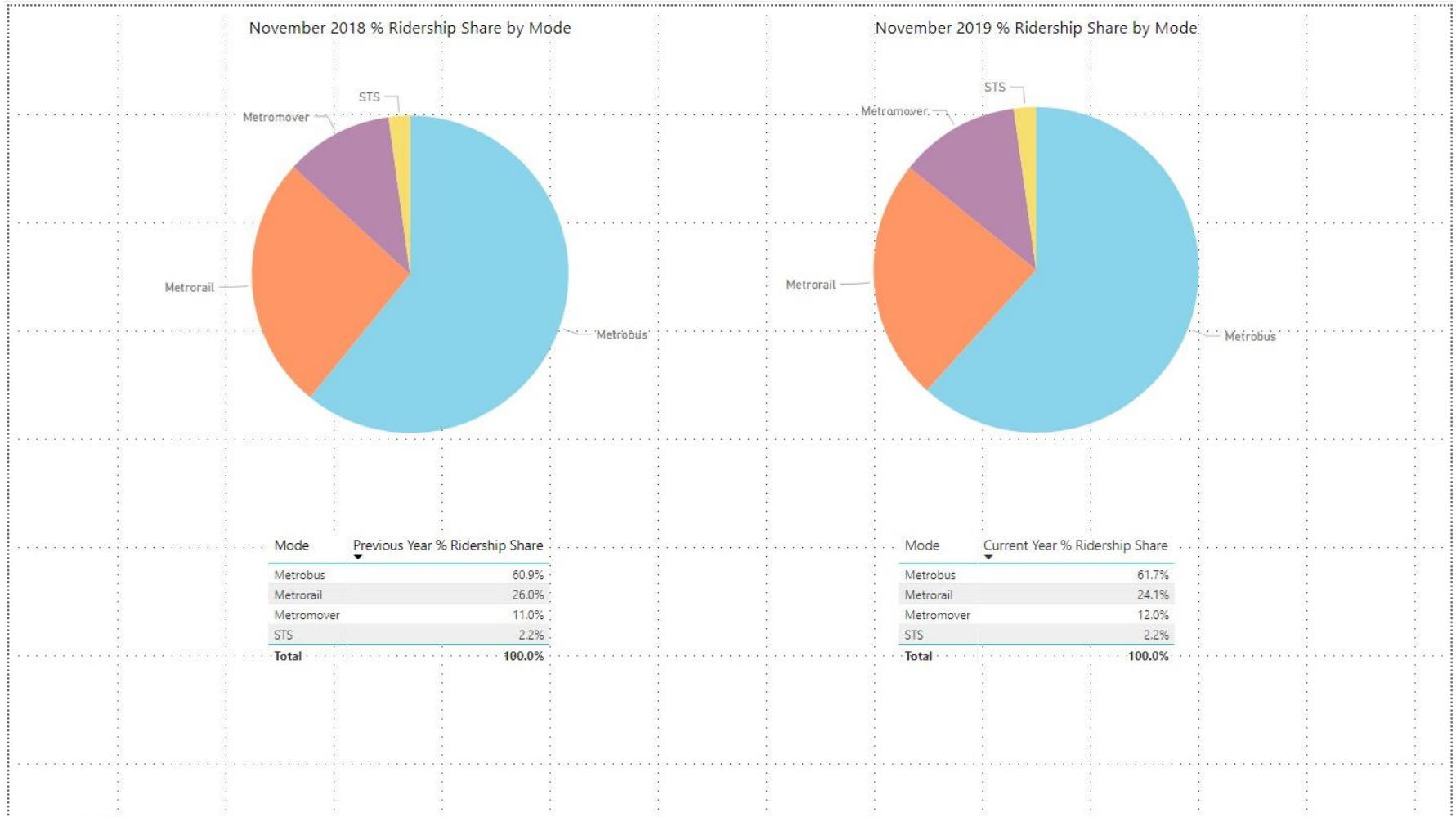
Mover	FY 16	FY 17	Variance 16 to 17	FY 18	Variance 17 to 18	FY 19	Variance 18 to 19	FY 20	Variance 19 to 20	Variance 16 to 20
Oct	899,379	814,781	-9.4%	751,323	-7.8%	790,533	5.2%	831,234	5.1%	-7.6%
Nov	828,643	841,679	1.6%	729,519	-13.3%	735,198	0.8%	799,632	8.8%	-3.5%
Dec	875,701	858,961	-1.9%	748,797	-12.8%	767,239	2.5%			
Jan	864,630	852,788	-1.4%	772,122	-9.5%	746,728	-3.3%			
Feb	860,579	780,514	-9.3%	698,107	-10.6%	675,160	-3.3%			
Mar	1,010,118	949,045	-6.0%	859,143	-9.5%	737,814	-14.1%			
Apr	886,427	802,778	-9.4%	740,036	-7.8%	795,696	7.5%			
May	831,477	814,791	-2.0%	694,106	-14.8%	734,645	5.8%			
Jun	806,774	737,042	-8.6%	641,675	-12.9%	701,318	9.3%			
Jul	841,630	796,649	-5.3%	700,462	-12.1%	739,814	5.6%			
Aug	814,796	788,734	-3.2%	768,728	-2.5%	739,785	-3.8%			
Sep	797,995	425,641	-46.7%	698,505	64.1%	699,879	0.2%			
Total	10,318,149	9,463,403	-8.3%	8,802,523	-7.0%	8,863,809	0.7%			

SPECIAL TRANSPORTATION SERVICES (STS) TOTAL MONTHLY RIDERSHIP COMPARISONS BY FISCAL YEAR

STS	FY 16	FY 17	Variance 16 to 17	FY 18	Variance 17 to 18	FY 19	Variance 18 to 19	FY 20	Variance 19 to 20	Variance 16 to 20
Oct	146,823	132,211	-10.0%	153,409	16.0%	162,564	6.0%	162,704	0.1%	10.8%
Nov	130,953	137,030	4.6%	143,375	4.6%	145,653	1.6%	144,366	-0.9%	10.2%
Dec	129,710	133,439	2.9%	136,955	2.6%	136,110	-0.6%			
Jan	129,219	134,273	3.9%	140,042	4.3%	146,268	4.4%			
Feb	133,999	134,089	0.1%	139,032	3.7%	141,396	1.7%			
Mar	144,181	153,790	6.7%	150,384	-2.2%	153,191	1.9%			
Apr	140,149	137,217	-2.1%	148,879	8.5%	155,808	4.7%			
May	140,456	151,138	7.6%	152,164	0.7%	158,665	4.3%			
Jun	137,936	140,623	1.9%	143,653	2.2%	141,320	-1.6%			
Jul	129,989	133,656	2.8%	141,020	5.5%	148,232	5.1%			
Aug	137,964	145,760	5.7%	151,750	4.1%	147,331	-2.9%			
Sep	141,966	100,010	-29.6%	142,360	42.3%	141,387	-0.7%			
Total	1,643,345	1,633,236	-0.6%	1,743,023	6.7%	1,777,925	2.0%			

AVERAGE WEEKDAY RIDERSHIP - MODAL SPLITS

POWER BI™ VISUALIZATION



Metrobus



METROBUS MONTHLY AND AVERAGE DAILY BOARDINGS BY ROUTE

Route	Average Weekday	Average Weekday	Percent Change	Average Saturday	Average Saturday	Percent Change	Average Sunday	Average Sunday	Percent Change	Total Monthly	Total Monthly	Percent Change
	Nov-19	Nov-18	19 vs 18	Nov-19	Nov-18	19 vs 18	Nov-19	Nov-18	19 vs 18	Nov-19	Nov-18	19 vs 18
1 (*)	303	325	-6.8%	254	334	-24.0%	199	281	-29.4%	8,321	9,571	-13.1%
2	2,482	2,478	0.2%	1,549	1,489	4.0%	1,024	1,039	-1.5%	62,506	63,185	-1.1%
3	5,000	4,887	2.3%	5,534	5,601	-1.2%	4,174	4,071	2.5%	148,547	145,378	2.2%
7	3,239	4,380	-26.0%	1,953	2,478	-21.2%	1,453	1,712	-15.2%	81,808	110,441	-25.9%
8	3,714	3,802	-2.3%	2,180	2,266	-3.8%	1,692	1,662	1.9%	93,650	97,223	-3.7%
9	5,455	5,090	7.2%	3,359	3,276	2.5%	2,433	2,359	3.2%	138,066	131,785	4.8%
10	2,183	2,303	-5.2%	1,876	1,783	5.2%	1,232	1,269	-2.9%	59,198	61,835	-4.3%
11	7,066	7,343	-3.8%	5,667	5,704	-0.6%	3,730	3,707	0.6%	188,314	195,560	-3.7%
12	2,766	2,588	6.9%							55,318	54,343	1.8%
16	1,760	1,809	-2.7%	1,578	1,652	-4.5%	838	948	-11.6%	47,282	49,343	-4.2%
17	3,804	3,851	-1.2%	2,613	2,451	6.6%	1,678	1,712	-2.0%	97,525	99,237	-1.7%
19	1,533	1,664	-7.9%							30,660	34,944	-12.3%
21	1,847	1,962	-5.9%							36,937	41,203	-10.4%
22	3,716	3,988	-6.8%	2,126	2,281	-6.8%	1,540	1,637	-6.0%	92,639	101,062	-8.3%
24 - Coral Way Limited	1,786	1,916	-6.8%	1,289	1,447	-10.9%	950	1,051	-9.6%	46,915	51,281	-8.5%
27	6,712	6,568	2.2%	4,433	4,456	-0.5%	2,937	3,024	-2.9%	171,096	170,885	0.1%
29 (*)	644	735	-12.4%							12,870	15,431	-16.6%
31 - BUSWAY LOCAL	1,136	1,143	-0.6%	908	976	-7.0%	607	602	0.8%	30,304	30,922	-2.0%
32	2,383	2,305	3.4%	1,151	1,047	9.9%	764	729	4.9%	57,236	56,246	1.8%
33	1,733	1,593	8.8%	1,079	1,064	1.4%	620	601	3.1%	43,150	40,709	6.0%
34 EXPRESS	1,866	1,967	-5.1%							37,324	41,305	-9.6%
35 (*)	2,574	2,513	2.4%	1,123	1,122	0.2%	942	783	20.2%	61,808	61,176	1.0%
36	2,518	2,189	15.0%	1,368	1,327	3.1%	1,030	968	6.4%	62,344	56,121	11.1%
37	3,318	3,246	2.2%	2,293	2,019	13.6%	1,673	1,577	6.1%	86,189	84,116	2.5%
38	6,622	6,752	-1.9%	4,977	5,135	-3.1%	3,935	4,126	-4.6%	176,989	182,965	-3.3%
39 EXPRESS	890	902	-1.4%							17,801	18,952	-6.1%

METROBUS MONTHLY AND AVERAGE DAILY BOARDINGS BY ROUTE

Route	Average Weekday	Average Weekday	Percent Change	Average Saturday	Average Saturday	Percent Change	Average Sunday	Average Sunday	Percent Change	Total Monthly	Total Monthly	Percent Change
	Nov-19	Nov-18	19 vs 18	Nov-19	Nov-18	19 vs 18	Nov-19	Nov-18	19 vs 18	Nov-19	Nov-18	19 vs 18
40	1,665	1,820	-8.5%	710	753	-5.7%	487	516	-5.5%	39,285	43,812	-10.3%
42	843	799	5.6%	601	610	-1.5%	345	369	-6.5%	21,597	21,054	2.6%
46 - LIBERTY CITY CONN. (*)	35	56	-37.0%							700	1,166	-40.0%
51 - FLAGLER MAX	3,218	3,127	2.9%							64,366	65,659	-2.0%
52	1,220	1,320	-7.6%	700	763	-8.2%	441	509	-13.5%	30,091	33,324	-9.7%
54	3,009	2,999	0.3%	1,938	1,895	2.3%	1,139	1,201	-5.1%	75,573	76,565	-1.3%
56 (*)	353	399	-11.7%							7,053	8,384	-15.9%
57	412	438	-5.9%							8,239	9,197	-10.4%
62	1,936	1,849	4.7%	1,343	1,356	-0.9%	868	857	1.3%	49,768	48,546	2.5%
71 (*)	698	691	1.0%	329	262	25.7%	157	202	-22.4%	16,393	16,575	-1.1%
72 (*)	742	736	0.7%	377	409	-7.8%	282	267	5.7%	18,136	18,436	-1.6%
73	2,137	2,216	-3.6%	1,033	994	3.9%	480	472	1.7%	50,303	52,871	-4.9%
75	1,492	1,328	12.3%	472	440	7.3%	248	216	14.6%	33,431	30,727	8.8%
77	7,256	7,287	-0.4%	4,373	4,553	-3.9%	2,886	2,958	-2.4%	181,409	186,032	-2.5%
79	378	323	17.3%							7,567	6,774	11.7%
82 - WESTCHESTER CIRC. (*)	68	65	4.2%	61						1,655	1,362	21.5%
87	1,511	1,643	-8.0%	541	536	1.0%	287	331	-13.2%	34,368	38,293	-10.2%
88	2,043	2,234	-8.5%	1,802	1,755	2.7%	1,223	1,222	0.1%	55,978	60,035	-6.8%
93 - BISCAYNE MAX	3,446	3,543	-2.8%							68,910	74,409	-7.4%
95 EXPRESS	1,713	1,829	-6.3%							34,266	38,403	-10.8%
99	1,459	1,447	0.8%	907	934	-2.9%	626	629	-0.5%	36,841	37,259	-1.1%
101 - A (*)	158	170	-6.9%	70	68	2.9%	49	47	4.3%	3,753	4,070	-7.8%
102 - B	1,614	1,434	12.6%	813	799	1.8%	745	717	4.0%	40,079	36,885	8.7%
103 - C	426	422	0.8%	297	276	7.5%	199	179	11.3%	10,991	10,866	1.2%
104	885	980	-9.7%	482	590	-18.3%	297	362	-18.0%	21,587	24,743	-12.8%
105 - E	1,203	1,190	1.1%	667	635	5.1%	567	541	4.9%	30,235	30,239	0.0%

METROBUS MONTHLY AND AVERAGE DAILY BOARDINGS BY ROUTE

Route	Average Weekday	Average Weekday	Percent Change	Average Saturday	Average Saturday	Percent Change	Average Sunday	Average Sunday	Percent Change	Total Monthly	Total Monthly	Percent Change
	Nov-19	Nov-18	19 vs 18	Nov-19	Nov-18	19 vs 18	Nov-19	Nov-18	19 vs 18	Nov-19	Nov-18	19 vs 18
107 - G	1,674	1,648	1.6%	1,136	1,053	7.9%	819	736	11.2%	43,252	42,491	1.8%
108 - H	477	476	0.4%	411	415	-0.8%	334	337	-1.1%	13,272	13,333	-0.5%
110 - J	2,643	2,320	13.9%	1,892	1,695	11.7%	1,513	1,336	13.2%	69,886	62,171	12.4%
112 - L	7,669	7,175	6.9%	6,234	5,806	7.4%	4,548	4,293	6.0%	207,288	195,361	6.1%
113 - M	852	732	16.3%	458	392	16.8%	358	343	4.2%	21,112	18,662	13.1%
115 (*)	159	113	40.5%	96	47	105.3%	88	43	105.1%	4,102	2,779	47.6%
119 - S	8,978	8,474	6.0%	7,553	6,901	9.5%	7,080	6,520	8.6%	252,731	238,151	6.1%
120 - BEACH MAX	6,826	5,871	16.3%	5,200	5,137	1.2%	3,465	3,121	11.0%	179,834	159,448	12.8%
132 TRI-RAIL (DORAL)	6	25	-77.4%							114	530	-78.5%
135	1,328	1,392	-4.6%	552	506	9.2%	363	395	-8.1%	31,143	33,230	-6.3%
136	142	142	-0.1%							2,835	2,979	-4.8%
137 - WEST DADE CONN.	1,608	1,717	-6.4%	1,148	1,174	-2.3%	800	866	-7.7%	41,900	45,092	-7.1%
150 - MIAMI BEACH AIRPORT FLYER	1,890	1,714	10.2%	1,753	1,621	8.1%	1,593	1,518	4.9%	54,524	50,071	8.9%
155 - BISCAYNE GARDENS CIRCULATOR (*)	39	48	-19.4%							775	1,010	-23.3%
175 - NW MIAMI-DADE EXPRESS	9									80		
183	3,129	3,268	-4.2%	1,968	1,806	9.0%	1,293	1,313	-1.6%	78,888	82,410	-4.3%
195 EXPRESS - BROWARD BLVD	367	456	-19.6%							7,339	9,579	-23.4%
196 EXPRESS - SHERIDAN ST	362	426	-15.1%							7,235	8,952	-19.2%
200 - CUTLER BAY LOCAL	141	164	-13.8%	122	140	-13.0%	42	23	84.2%	3,645	4,118	-11.5%
202 - LITTLE HAITI CONN. (*)	145	133	8.7%	64	60	6.2%	70	43	63.3%	3,571	3,257	9.6%
204 KILLIAN KAT	970	1,063	-8.7%							19,404	22,313	-13.0%
207 (7st) - LITTLE HAVANA CIRC	1,508	1,419	6.3%	1,057	948	11.5%	726	717	1.3%	39,082	37,183	5.1%
208 (8st) - LITTLE HAVANA CIRC	1,432	1,268	12.9%	1,001	912	9.8%	969	835	16.1%	38,482	34,449	11.7%
210 - SKYLAKE CIRC (*)	301	219	37.2%	167	186	-10.1%	138	154	-10.4%	7,543	6,120	23.3%
211 - OVERTOWN CIRC. (*)	68	76	-10.3%							1,360	1,592	-14.6%
212 - SWEETWATER CIRC. (*)	30	55	-46.1%							598	1,165	-48.7%
217 - BUNCHE PARK CIRC (*)	85	67	26.7%							1,701	1,410	20.6%
238 EAST/WEST CONN.	513	475	7.9%							10,261	9,983	2.8%

METROBUS MONTHLY AND AVERAGE DAILY BOARDINGS BY ROUTE

Route	Average Weekday	Average Weekday	Percent Change	Average Saturday	Average Saturday	Percent Change	Average Sunday	Average Sunday	Percent Change	Total Monthly	Total Monthly	Percent Change
	Nov-19	Nov-18	19 vs 18	Nov-19	Nov-18	19 vs 18	Nov-19	Nov-18	19 vs 18	Nov-19	Nov-18	19 vs 18
246 - NIGHT OWL (*)	99	118	-16.1%	93	111	-15.7%	93	115	-18.6%	2,912	3,493	-16.6%
248 - PRINCETON CIRCULATOR (*)	115	33	251.7%							2,298	294	681.6%
252 - CORAL REEF MAX	850	952	-10.8%	316	372	-15.0%	247	246	0.7%	19,814	22,714	-12.8%
254 - BROWNSVILLE CIRC. (*)	17	20	-15.2%							332	411	-19.2%
267 - LUDLAM LIMITED (*)	135	126	7.2%							2,696	2,641	2.1%
272 SUNSET KAT (*)	520	537	-3.2%							10,397	11,282	-7.8%
277 - 7th AVENUE MAX	647	690	-6.2%							12,937	14,480	-10.7%
286 - NORTH POINTE CIRC. (*)	109	90	20.3%	63	68	-7.0%				2,490	2,169	14.8%
287 - SAGA BAY MAX	337	376	-10.3%							6,736	7,888	-14.6%
288 - KENDALL CRUISER	793	795	-0.3%							15,855	16,700	-5.1%
295 EXPRESS - BROWARD BLVD - CIVIC CENTER	220	314	-30.0%							4,395	6,594	-33.3%
296 EXPRESS - SHERIDAN ST - CIVIC CENTER	195	184	6.0%							3,899	3,862	1.0%
297-27th AVENUE ORANGE MAX	1,325	1,443	-8.2%					42		26,500	30,469	-13.0%
301 DADE-MONROE EXPRESS (*)	823	834	-1.3%	843	816	3.4%	755	700	7.9%	24,452	24,281	0.7%
302 CARD SOUND EXPRESS (*)	78	79	-0.3%	53	62	-13.8%	70	56	24.2%	2,180	2,177	0.1%
338 - WEEKEND EXPRESS				261	267	-2.3%	274	213	28.4%	2,674	2,135	25.2%
344 (*)	104	97	7.3%							2,087	2,043	2.2%
500	36	51	-30.3%	46	45	2.2%	45	33	34.1%	1,168	1,423	-17.9%
12/21 WEEKEND INTERL.				2,719	2,828	-3.8%	2,027	1,993	1.7%	23,731	21,277	11.5%
GREEN HILLS SHUTTLE (*)	5	7	-27.6%							21	29	-27.6%
KINGS CREEK SHUTTLE (*)	11	19	-41.3%							33	75	-56.0%
SIERRA LAKES SHUTTLE (*)	24	27	-13.9%							118	137	-13.9%
ROBERT SHARP SHUTTLE (*)	6	6	4.3%							24	23	4.3%
AHEPA SHUTTLE (*)	19	20	-4.3%							56	78	-28.2%
FEDERATION GARDENS SHUTTLE (*)				18	29	-36.6%				92	116	-20.7%
Total	166,784	166,398	0.2%	100,051	98,924	1.1%	72,484	71,444	1.5%	4,197,225	4,245,535	-1.1%

(1) Excludes shuttles and those routes which were not run both years.

(*) The following routes are operated under contract: 1, 29, 35, 46, 56, 71, 72, 82, 101-A, 115, 155, 202, 210, 211, 212, 217, 246, 248, 254, 267, 272, 286 and 344. Dade-Monroe routes 301 and 302 as well as six Lifeline routes are also under contracted operation.

Due to data validation issues in NextFare, especially affecting Route 1, beginning with the April 2018 ridership technical report all contracted routes' boardings are reported directly from contractor counts.

METROBUS HOLIDAY BOARDINGS BY ROUTE

Veterans Day Holiday 2019

ROUTES	Veterans Day 2018	Veterans Day 2019	Pct Delta	ROUTES	Veterans Day 2018	Veterans Day 2019	Pct Delta	ROUTES	Veterans Day 2018	Veterans Day 2019	Pct Delta
1 (*)	302	270	-10.6%	57	357	376	5.3%	183	2,562	2,509	-2.1%
2	1,804	1,866	3.4%	62	1,526	1,621	6.2%	195	235	204	-13.2%
3	4,617	4,639	0.5%	71 (*)	413	469	13.6%	196	199	172	-13.6%
7	3,697	2,903	-21.5%	72 (*)	559	1,392	149.0%	200	122	150	23.0%
8	3,548	2,783	-21.6%	73	1,878	1,847	-1.7%	202 (*)	124	113	-8.9%
9	4,283	4,498	5.0%	75	866	777	-10.3%	204	677	601	-11.2%
10	2,020	2,006	-0.7%	77	5,933	6,339	6.8%	207	1,254	1,242	-1.0%
11	6,129	5,840	-4.7%	79	322	372	15.5%	208	1,146	1,199	4.6%
12	2,024	2,218	9.6%	82 (*)	46	91	97.8%	210 (*)	188	223	18.6%
16	1,661	1,527	-8.1%	87	1,290	1,359	5.3%	211 (*)	46	55	19.6%
17	3,129	3,009	-3.8%	88	2,072	1,706	-17.7%	212 (*)	32	24	-25.0%
19	1,055	887	-15.9%	93	2,853	2,661	-6.7%	217 (*)	36	49	36.1%
21	1,623	1,564	-3.6%	95	703	666	-5.3%	238	418	477	14.1%
22	3,368	3,055	-9.3%	99	1,179	1,307	10.9%	246 (*)	110	104	-5.5%
24	1,641	1,552	-5.4%	101 (*)	156	120	-23.1%	252	693	676	-2.5%
27	5,146	5,100	-0.9%	102	1,322	1,605	21.4%	254 (*)	5	12	140.0%
29 (*)	693	589	-15.0%	103	328	424	29.3%	267 (*)	139	118	-15.1%
31	921	940	2.1%	104	635	577	-9.1%	272 (*)	386	369	-4.4%
32	1,880	1,918	2.0%	105	1,060	1,094	3.2%	277	559	449	-19.7%
33	1,077	1,374	27.6%	107	1,493	1,526	2.2%	286 (*)	76	21	-72.4%
34	1,293	1,323	2.3%	108	439	477	8.7%	287	261	228	-12.6%
35 (*)	1,677	1,826	8.9%	110	2,164	2,345	8.4%	288	629	572	-9.1%
36	1,892	2,314	22.3%	112	6,622	7,093	7.1%	295	141	164	16.3%
37	3,109	3,064	-1.4%	113	682	787	15.4%	296	114	117	2.6%
38	5,517	5,342	-3.2%	115 (*)	79	145	83.5%	297	909	954	5.0%
39	467	402	-13.9%	119	7,941	8,639	8.8%	301 (*)	856	788	-7.9%
40	1,496	1,334	-10.8%	120	6,097	6,635	8.8%	302 (*)	79	100	26.6%
42	698	731	4.7%	132	3	15	400.0%	344 (*)	59	57	-3.4%
46 (*)	34	20	-41.2%	135	883	935	5.9%	500	47	83	76.6%
51	2,511	2,455	-2.2%	136	91	138	51.6%				
52	1,062	908	-14.5%	137	1,424	1,486	4.4%				
54	2,629	2,685	2.1%	150	1,641	1,864	13.6%				
56 (*)	283	263	-7.1%	155 (*)	17	34	100.0%				
								Total (1)	138,462	139,957	1.1%

(1) Excludes lifeline shuttles and those routes which were not run both years

(*) Routes under contracted operation

METROBUS HOLIDAY BOARDINGS BY ROUTE

Thanksgiving Day Holiday 2019

ROUTES	Thanksgiving 2018	Thanksgiving 2019	Pct Delta	ROUTES	Thanksgiving 2018	Thanksgiving 2019	Pct Delta
1 (*)	199	166	-16.6%	88	1,027	803	-21.8%
2	1,003	939	-6.4%	99	455	394	-13.4%
3	3,291	3,325	1.0%	101 (*)	50	74	48.0%
7	1,546	1,137	-26.5%	102	573	732	27.7%
8	1,489	1,534	3.0%	103	185	208	12.4%
9	1,818	1,913	5.2%	104	265	260	-1.9%
10	1,038	783	-24.6%	105	451	427	-5.3%
11	3,237	3,357	3.7%	107	601	681	13.3%
12	783	1,115	42.4%	108	283	285	0.7%
16	736	614	-16.6%	110	1,047	1,336	27.6%
17	1,647	1,514	-8.1%	112	3,745	4,019	7.3%
21	742	675	-9.0%	113	288	285	-1.0%
22	1,447	1,209	-16.4%	115 (*)	59	69	16.9%
24	759	751	-1.1%	119	5,713	6,034	5.6%
27	2,687	2,409	-10.3%	120	2,844	3,039	6.9%
31	423	422	-0.2%	135	280	304	8.6%
32	642	667	3.9%	137	656	576	-12.2%
33	459	502	9.4%	150	1,558	1,690	8.5%
35 (*)	678	1,006	48.4%	183	994	938	-5.6%
36	814	785	-3.6%	200	26	24	-7.7%
37	1,126	1,306	16.0%	202 (*)	51	60	17.6%
38	3,364	3,021	-10.2%	207	591	663	12.2%
40	475	413	-13.1%	208	773	882	14.1%
42	304	276	-9.2%	210 (*)	110	127	15.5%
52	385	350	-9.1%	246 (*)	81	67	-17.3%
54	1,084	1,069	-1.4%	252	209	165	-21.1%
62	713	772	8.3%	301 (*)	481	615	27.9%
71 (*)	202	173	-14.4%	302 (*)	52	73	40.4%
72 (*)	208	247	18.8%	338	216	220	1.9%
73	417	345	-17.3%	500	49	39	-20.4%
75	166	213	28.3%				
77	2,619	2,551	-2.6%				
87	232	162	-30.2%				
				Total (1)	60,446	60,810	0.6%

(1) Excludes lifeline shuttles and those routes which were not run both years

(*) Routes under contracted operation

METROBUS HOLIDAY BOARDINGS BY ROUTE

Friday-After-Thanksgiving Holiday 2019

ROUTES	Friday-After-Thanksgiving 2018	Friday-After-Thanksgiving 2019	Pct Delta	ROUTES	Friday-After-Thanksgiving 2018	Friday-After-Thanksgiving 2019	Pct Delta	ROUTES	Friday-After-Thanksgiving 2018	Friday-After-Thanksgiving 2019	Pct Delta
1 (*)	317	260	-18.0%	57	264	281	6.4%	183	2,487	2,387	-4.0%
2	1,718	1,928	12.2%	62	1,303	1,596	22.5%	195	64	69	7.8%
3	4,295	4,606	7.2%	71 (*)	453	487	7.5%	196	140	87	-37.9%
7	3,480	2,380	-31.6%	72 (*)	442	497	12.4%	200	128	98	-23.4%
8	2,625	2,626	0.0%	73	1,349	1,365	1.2%	202 (*)	119	138	16.0%
9	4,195	4,782	14.0%	75	759	924	21.7%	204	395	360	-8.9%
10	1,855	1,845	-0.5%	77	5,396	5,967	10.6%	207	1,114	1,316	18.1%
11	5,393	5,811	7.8%	79	240	241	0.4%	208	998	1,266	26.9%
12	1,695	1,875	10.6%	82 (*)	53	38	-28.3%	210 (*)	192	326	69.8%
16	1,508	1,608	6.6%	87	939	915	-2.6%	211 (*)	73	56	-23.3%
17	2,495	2,744	10.0%	88	1,802	1,739	-3.5%	212 (*)	38	20	-47.4%
19	924	856	-7.4%	93	2,664	2,685	0.8%	217 (*)	27	47	74.1%
21	1,280	1,523	19.0%	95	351	424	20.8%	238	586	600	2.4%
22	2,629	2,877	9.4%	99	1,080	1,159	7.3%	246 (*)	94	90	-4.3%
24	1,374	1,419	3.3%	101 (*)	136	128	-5.9%	248 (*)	32	99	209.4%
27	4,519	5,286	17.0%	102	1,149	1,302	13.3%	252	469	507	8.1%
29 (*)	433	432	-0.2%	103	316	296	-6.3%	254 (*)	17	14	-17.6%
31	753	898	19.3%	104	558	427	-23.5%	267 (*)	50	72	44.0%
32	1,478	1,822	23.3%	105	986	1,009	2.3%	272 (*)	278	236	-15.1%
33	1,062	1,394	31.3%	107	1,172	1,405	19.9%	277	339	372	9.7%
34	666	662	-0.6%	108	403	401	-0.5%	286 (*)	51	102	100.0%
35 (*)	1,515	1,941	28.1%	110	1,816	2,026	11.6%	287	153	158	3.3%
36	1,609	2,014	25.2%	112	6,319	7,065	11.8%	288	385	421	9.4%
37	2,621	2,447	-6.6%	113	541	634	17.2%	295	135	94	-30.4%
38	5,409	5,433	0.4%	115 (*)	55	85	54.5%	296	56	50	-10.7%
39	197	176	-10.7%	119	8,331	8,558	2.7%	297	806	820	1.7%
40	1,189	1,182	-0.6%	120	4,950	6,500	31.3%	301 (*)	818	855	4.5%
42	597	586	-1.8%	132	6	0	-100.0%	302 (*)	65	63	-3.1%
46 (*)	22	10	-54.5%	135	882	830	-5.9%	344 (*)	61	66	8.2%
51	1,822	2,240	22.9%	136	81	81	0.0%	500	77	23	-70.1%
52	893	869	-2.7%	137	1,334	1,330	-0.3%				
54	2,097	2,415	15.2%	150	1,752	1,736	-0.9%				
56 (*)	192	194	1.0%	155 (*)	41	6	-85.4%				
								Total (1)	121,027	130,090	7.5%

(1) Excludes lifeline shuttles and those routes which were not run both years

(*) Routes under contracted operation

BUS RIDERSHIP BY ROUTE SERVICE TYPE

Boardings by Service Type and Route	Average Weekday Nov-19	Average Weekday Nov-18	Percent Change 19 vs 18	Average Saturday Nov-19	Average Saturday Nov-18	Percent Change 19 vs 18	Average Sunday Nov-19	Average Sunday Nov-18	Percent Change 19 vs 18	Total Monthly Nov-19	Total Monthly Nov-18	Percent Change 19 vs 18
Express Routes												
34 EXPRESS	1,866	1,967	-5.1%							37,324	41,305	-9.6%
39 EXPRESS	890	902	-1.4%							17,801	18,952	-6.1%
95-EXPRESS	1,713	1,829	-6.3%							34,266	38,403	-10.8%
150-MIAMI BEACH AIRPORT FLYER	1,890	1,714	10.2%	1,753	1,621	8.1%	1,593	1,518	4.9%	54,524	50,071	8.9%
175 - NW MIAMI-DADE EXPRESS	9									80		
195 EXPRESS - BROWARD BLVD	367	456	-19.6%							7,339	9,579	-23.4%
196 EXPRESS - SHERIDAN ST	362	426	-15.1%							7,235	8,952	-19.2%
295 EXPRESS - BROWARD BLVD - CIVIC CENTER	220	314	-30.0%							4,395	6,594	-33.3%
296 EXPRESS - SHERIDAN ST - CIVIC CENTER	195	184	6.0%							3,899	3,862	1.0%
204 KAT-KILLIAN	970	1,063	-8.7%							19,404	22,313	-13.0%
288 KENDALL CRUISER	793	795	-0.3%							15,855	16,700	-5.1%
338 - WEEKEND EXPRESS				261	267	-2.3%	274	213	28.4%	2,674	2,135	25.2%
Subtotal Express Routes	9,274	9,650	-3.9%	2,014	1,888	6.7%	1,867	1,731	7.8%	204,796	218,866	-6.4%
Percentage of All Bus Routes	5.6%	5.8%		2.0%	1.9%		2.6%	2.4%		4.9%	5.2%	
Contracted Regular & Circulator Routes												
1	303	325	-6.8%	254	334	-24.0%	199	281	-29.4%	8,321	9,571	-13.1%
29	644	735	-12.4%							12,870	15,431	-16.6%
35	2,574	2,513	2.4%	1,123	1,122	0.2%	942	783	20.2%	61,808	61,176	1.0%
46 - LIBERTY CITY CONN.	35	56	-37.0%							700	1,166	-40.0%
56	353	399	-11.7%							7,053	8,384	-15.9%
71	698	691	1.0%	329	262	25.7%	157	202	-22.4%	16,393	16,575	-1.1%
72	742	736	0.7%	377	409	-7.8%	282	267	5.7%	18,136	18,436	-1.6%
82 - WESTCHESTER CIRC	68	65	4.2%	61						1,655	1,362	21.5%
101 - A	158	170	-6.9%	70	68	2.9%	49	47	4.3%	3,753	4,070	-7.8%
115	159	113	40.5%	96	47	105.3%	88	43	105.1%	4,102	2,779	47.6%
155 - BISCAYNE GARDENS CIRC	39	48	-19.4%							775	1,010	-23.3%
202 - LITTLE HAITI CONN.	145	133	8.7%	64	60	6.2%	70	43		3,571	3,257	9.6%
210 - SKYLAKE CIRC	301	219	37.2%	167	186	-10.1%	138	154	-10.4%	7,543	6,120	23.3%
211-OVERTOWN CIRC	68	76	-10.3%							1,360	1,592	-14.6%
212-SWEETWATER CIRC	30	55	-46.1%							598	1,165	-48.7%
217 - BUNCHE PARK CIRC	85	67	26.7%							1,701	1,410	20.6%
246 - NIGHT OWL	99	118	-16.1%	93	111	-15.7%	93	115	-18.6%	2,912	3,493	-16.6%
248 - PRINCETON CIRCULATOR	115	33	251.7%							2,298	294	681.6%
254-BROWNSVILLE CIRC	17	20	-15.2%							332	411	-19.2%
267-LUDLAM LIMITED	135	126	7.2%							2,696	2,641	2.1%
272 KAT-SUNSET	520	537	-3.2%							10,397	11,282	-7.8%
286-NORTH POINTE CIRC	109	90	20.3%	63	68	-7.0%				2,490	2,169	14.8%
344	104	97	7.3%							2,087	2,043	2.2%
Subtotal Contracted Reg. & Circ. Routes	7,499	7,391	1.5%	2,698	2,666	1.2%	2,017	1,935	4.3%	173,551	175,543	-1.1%
Percentage of All Bus Routes	4.5%	4.4%		2.7%	2.7%		2.8%	2.7%		4.1%	4.1%	

BUS RIDERSHIP BY ROUTE SERVICE TYPE

Boardings by Service Type and Route	Average Weekday	Average Weekday	Percent Change	Average Saturday	Average Saturday	Percent Change	Average Sunday	Average Sunday	Percent Change	Total Monthly	Total Monthly	Percent Change
	Nov-19	Nov-18	19 vs 18	Nov-19	Nov-18	19 vs 18	Nov-19	Nov-18	19 vs 18	Nov-19	Nov-18	19 vs 18
Contracted Express Routes												
301-DADE MONROE EXPRESS	823	834	-1.3%	843	816	3.4%	755	700	7.9%	24,452	24,281	0.7%
302-CARD SOUND EXPRESS	78	79	-0.3%	53	62	-13.8%	70	56	24.2%	2,180	2,177	0.1%
Subtotal Contracted Express Routes	901	913	-1.2%	896	877	2.2%	824	756	9.1%	26,632	26,458	0.7%
Percentage of All Bus Routes	0.5%	0.5%		0.9%	0.9%		1.1%	1.1%		0.6%	0.6%	
Limited Stop Routes												
51-FLAGLER MAX	3,218	3,127	2.9%							64,366	65,659	-2.0%
93 - BISCAYNE MAX	3,446	3,543	-2.8%							68,910	74,409	-7.4%
120 - BEACH MAX	6,826	5,871	16.3%	5,200	5,137	1.2%	3,465	3,121	11.0%	179,834	159,448	12.8%
252-CORAL REEF MAX	850	952	-10.8%	316	372	-15.0%	247	246	0.7%	19,814	22,714	-12.8%
277-7TH AVENUE MAX	647	690	-6.2%							12,937	14,480	-10.7%
287-SAGA BAY MAX	337	376	-10.3%							6,736	7,888	-14.6%
297-27th AVENUE ORANGE MAX	1,325	1,443	-8.2%					42		26,500	30,469	-13.0%
Subtotal Limited Stop (MAX) Routes	16,648	16,002	4.0%	5,515	5,508	0.1%	3,712	3,408	8.9%	379,097	375,067	1.1%
Percentage of All Bus Routes	10.0%	9.6%		5.5%	5.6%		5.1%	4.8%		9.0%	8.8%	
Free Route												
132 -TRI-RAIL DORAL	6	25	-77.4%							114	530	-78.5%
Percentage of All Bus Routes	0.0%	0.0%								0.0%	0.0%	
Contractor-Operated Lifeline Routes												
GREEN HILLS SHUTTLE	5	7	-27.6%							21	29	-27.6%
KINGS CREEK SHUTTLE	11	19	-41.3%							33	75	-56.0%
SIERRA LAKES SHUTTLE	24	27	-13.9%							118	137	-13.9%
ROBERT SHARP SHUTTLE	6	6	4.3%							24	23	4.3%
AHEPA SHUTTLE	19	20	-4.3%							56	78	-28.2%
FEDERATION GARDENS SHUTTLE				18	29	-36.6%				92	116	-20.7%
Subtotal Contractor-Operated Lifeline Routes	65	79	-18.0%	18	29	-36.6%				344	458	-24.9%
Percentage of All Bus Routes	0.0%	0.0%		0.0%	0.0%		0.0%	0.0%		0.0%	0.0%	
Other Circulator Route												
200-CUTLER BAY LOCAL	141	164	-13.8%	122	140	-13.0%	42	23		3,645	4,118	-11.5%
Percentage of All Bus Routes	0.1%	0.1%		0.1%	0.1%		0.1%			0.1%	0.1%	
All Other (Regular) Routes	132,250	132,142	0.1%	88,787	87,816	1.1%	64,021	63,591	0.7%	3,409,046	3,444,201	-1.0%
Percentage of All Bus Routes	79.3%	79.4%		88.7%	88.8%		88.3%	89.0%		81.2%	81.1%	
Total Bus System (1)	166,784	166,398	0.2%	100,051	98,924	1.1%	72,484	71,444	1.5%	4,197,225	4,245,535	-1.1%

(1) Excludes shuttles and those routes which were not run both years.

(*) The following routes are operated under contract: 1, 29, 35, 46, 56, 71, 72, 82, 101-A, 115, 155, 202, 210, 211, 212, 217, 246, 248, 254, 267, 272, 286 and 344. Dade-Monroe routes 301 and 302 as well as six Lifeline routes are also under contracted operation.

Bus Routes as Ranked by Percentage of Average Weekday Ridership

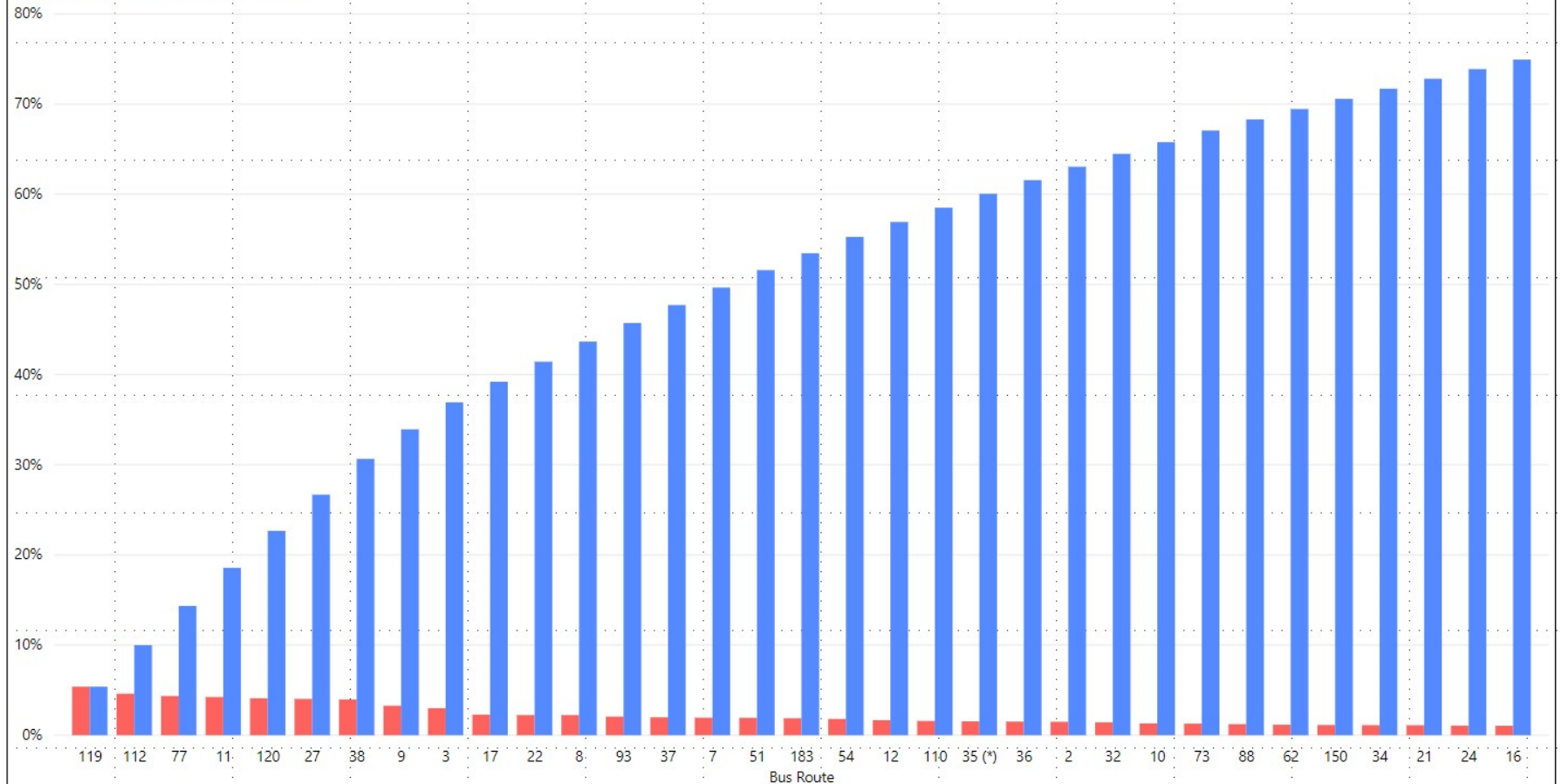
Rank	Route	Average Weekday	Percent Share	Cumul Pct Share	Rank	Route	Average Weekday	Percent Share	Cumul Pct Share	Rank	Route	Average Weekday	Percent Share	Cumul Pct Share
1	119	8,978	5.4%	5.4%	36	107	1,674	1.0%	78.0%	71	56	353	0.2%	98.1%
2	112	7,669	4.6%	10.0%	37	40	1,665	1.0%	79.0%	72	287	337	0.2%	98.3%
3	77	7,256	4.4%	14.3%	38	102	1,614	1.0%	80.0%	73	1	303	0.2%	98.5%
4	11	7,066	4.2%	18.6%	39	137	1,608	1.0%	80.9%	74	210	301	0.2%	98.6%
5	120	6,826	4.1%	22.7%	40	19	1,533	0.9%	81.9%	75	295	220	0.1%	98.8%
6	27	6,712	4.0%	26.7%	41	87	1,511	0.9%	82.8%	76	296	195	0.1%	98.9%
7	38	6,622	4.0%	30.7%	42	207	1,508	0.9%	83.7%	77	115	159	0.1%	99.0%
8	9	5,455	3.3%	33.9%	43	75	1,492	0.9%	84.6%	78	101	158	0.1%	99.1%
9	3	5,000	3.0%	36.9%	44	99	1,459	0.9%	85.4%	79	202	145	0.1%	99.2%
10	17	3,804	2.3%	39.2%	45	208	1,432	0.9%	86.3%	80	136	142	0.1%	99.3%
11	22	3,716	2.2%	41.4%	46	135	1,328	0.8%	87.1%	81	200	141	0.1%	99.3%
12	8	3,714	2.2%	43.7%	47	297	1,325	0.8%	87.9%	82	267	135	0.1%	99.4%
13	93	3,446	2.1%	45.7%	48	52	1,220	0.7%	88.6%	83	248	115	0.1%	99.5%
14	37	3,318	2.0%	47.7%	49	105	1,203	0.7%	89.3%	84	286	109	0.1%	99.6%
15	7	3,239	1.9%	49.7%	50	31	1,136	0.7%	90.0%	85	344	104	0.1%	99.6%
16	51	3,218	1.9%	51.6%	51	204	970	0.6%	90.6%	86	246	99	0.1%	99.7%
17	183	3,129	1.9%	53.5%	52	39	890	0.5%	91.1%	87	217	85	0.1%	99.7%
18	54	3,009	1.8%	55.3%	53	104	885	0.5%	91.7%	88	302	78	0.0%	99.8%
19	12	2,766	1.7%	56.9%	54	113	852	0.5%	92.2%	89	211	68	0.0%	99.8%
20	110	2,643	1.6%	58.5%	55	252	850	0.5%	92.7%	90	82	68	0.0%	99.9%
21	35	2,574	1.5%	60.1%	56	42	843	0.5%	93.2%	91	155	39	0.0%	99.9%
22	36	2,518	1.5%	61.6%	57	301	823	0.5%	93.7%	92	500	36	0.0%	99.9%
23	2	2,482	1.5%	63.1%	58	288	793	0.5%	94.2%	93	46	35	0.0%	99.9%
24	32	2,383	1.4%	64.5%	59	72	742	0.4%	94.6%	94	212	30	0.0%	99.9%
25	10	2,183	1.3%	65.8%	60	71	698	0.4%	95.0%	95	SL	24	0.0%	100.0%
26	73	2,137	1.3%	67.1%	61	277	647	0.4%	95.4%	96	AS	19	0.0%	100.0%
27	88	2,043	1.2%	68.3%	62	29	644	0.4%	95.8%	97	254	17	0.0%	100.0%
28	62	1,936	1.2%	69.5%	63	272	520	0.3%	96.1%	98	KC	11	0.0%	100.0%
29	150	1,890	1.1%	70.6%	64	238	513	0.3%	96.4%	99	175	9	0.0%	100.0%
30	34	1,866	1.1%	71.7%	65	108	477	0.3%	96.7%	100	RS	6	0.0%	100.0%
31	21	1,847	1.1%	72.8%	66	103	426	0.3%	97.0%	101	132	6	0.0%	100.0%
32	24	1,786	1.1%	73.9%	67	57	412	0.2%	97.2%	102	GH	5	0.0%	100.0%
33	16	1,760	1.1%	74.9%	68	79	378	0.2%	97.4%					
34	33	1,733	1.0%	76.0%	69	195	367	0.2%	97.7%					
35	95	1,713	1.0%	77.0%	70	196	362	0.2%	97.9%					
										Total	Boardings	166,784	100.0%	contracted

(1) Includes the five Lifeline Shuttles that operate on weekdays: Ahepa, Green Hills, Kings Creek, Robert Sharp and Sierra Lakes.

METROBUS CUMULATIVE PERCENTAGE RIDERSHIP SHARE BY ROUTE (TOP 75%) POWER BI™ VISUALIZATION

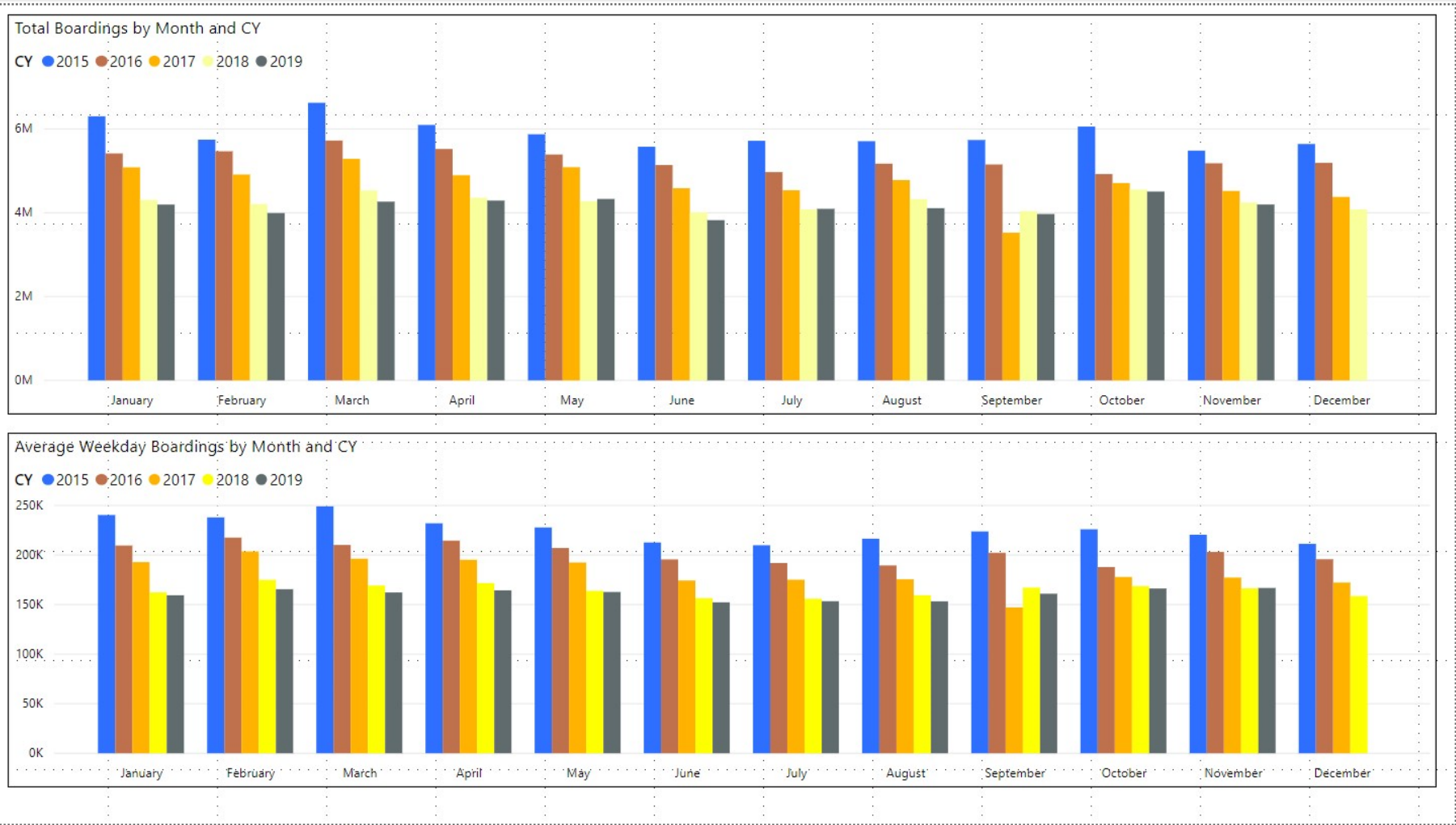
Percent Share and Cumulative % Share by Bus Route:

● Percent Share ● Cumulative % Share



(*) Contracted route

TOTAL MONTHLY AND AVERAGE WEEKDAY RIDERSHIP YEAR OVER YEAR COMPARISON CHARTS – METROBUS POWER BI™ VISUALIZATION



“TOP 5 / BOTTOM 5” BUS ROUTES AVERAGE WEEKDAY RIDERSHIP PERFORMANCE YEAR OVER YEAR COMPARISONS

Route	Nov-19	Nov-18	Absolute Delta (1)	Percent Delta
120 - BEACH MAX (+)	6,826	5,871	954	16.3%
119 - S	8,978	8,474	505	6.0%
112 - L	7,669	7,175	494	6.9%
9	5,455	5,090	365	7.2%
36 (+)	2,518	2,189	329	15.0%
7 (++)	3,239	4,380	-1,141	-26.0%
11	7,066	7,343	-277	-3.8%
22	3,716	3,988	-273	-6.8%
88	2,043	2,234	-191	-8.5%
40	1,665	1,820	-155	-8.5%

(1) Averages rounded to the nearest boarding

(+) Detailed analysis of data performed by run for these routes suggests the NextFare System data route allocation errors occurring a year ago, as well as substantially higher average numbers of weekday passengers per run, as a very likely causes for the overall increase seen from November 2018 to 2019

(++) Detailed analysis of data performed by run for this route suggests the NextFare System data route allocation errors occurring a year ago as a primary contribution to the decline seen from November 2018 to 2019.

METROBUS PARKING PATRONAGE SUMMARY

November 2019

PARK-RIDE LOT	ACTUAL AVAILABLE SPACES	ACTUAL OCCUPANCY	PERCENT OCCUPANCY
Transitway / SW 152nd St	200	200	100%
Transitway / SW 168th St	149	149	100%
Transitway / SW 112 Ave (Target)	450	422	94%
Transitway / SW 244th St	95	95	100%
Transitway / SW 296th St	139	123	88%
Transitway / SW 344th St	248	165	67%
Coral Reef Drive 117/ Turnpike	95	62	65%
Golden Glades - East Lot	535	596	111%
Golden Glades - West Lot	1,007	171	17%
Hammocks Town Center (SW 152 Ave / SW 104 St)	50	50	100%
Kendall Dr./SW 127th Ave	161	29	18%
West Kendall Transit Term (Kendall Dr / SW162 Ave)	40	28	70%
NW 7th Avenue Transit Village (NW 7 Ave / NW 62 St)	25	25	100%
Miami Gardens Dr. / NW 73rd Ave	136	6	4%
I-75 / Miami Gardens Dr (effective June 2019)	298	4	1%
TOTAL	3,628	2,125	59%

(*) There may be inaccuracies, due to ongoing construction

Metrorail



November 2019

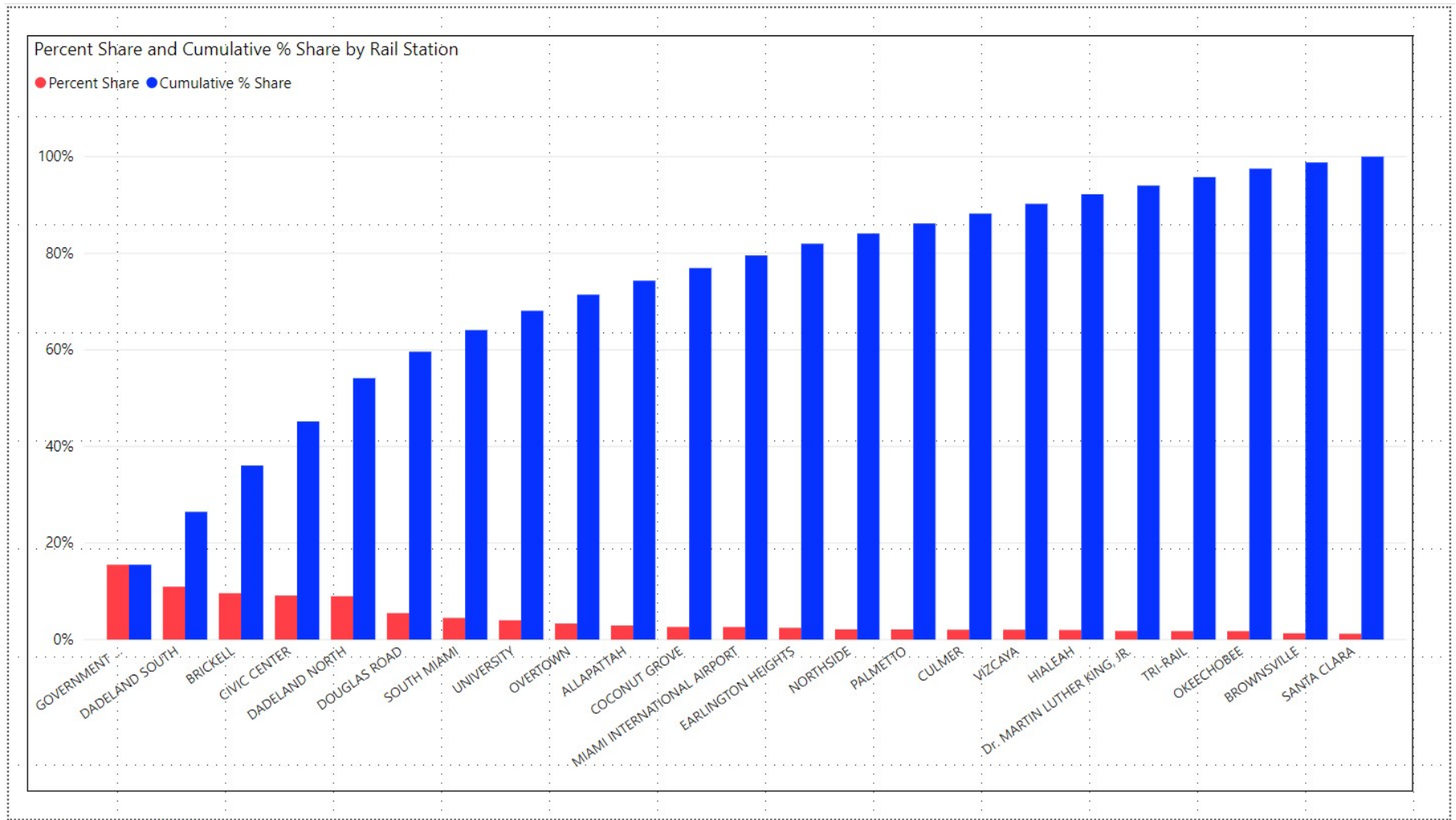
METRORAIL MONTHLY AND AVERAGE DAILY BOARDINGS BY STATION

	Average Weekday	Average Weekday	Percent Change	Average Saturday	Average Saturday	Percent Change	Average Sunday	Average Sunday	Percent Change	Total Monthly	Total Monthly	Percent Change
STATIONS	Nov-19	Nov-18	19 vs 18	Nov-19	Nov-18	19 vs 18	Nov-19	Nov-18	19 vs 18	Nov-19	Nov-18	19 vs 18
ALLAPATTAH	1,885	2,184	-13.7%	996	1,204	-17.3%	772	903	-14.5%	45,416	53,757	-15.5%
BRICKELL	6,232	7,095	-12.2%	2,604	3,053	-14.7%	2,097	2,422	-13.4%	144,016	168,270	-14.4%
BROWNSVILLE	839	986	-15.0%	520	615	-15.4%	382	457	-16.5%	20,905	24,958	-16.2%
CIVIC CENTER	5,926	6,738	-12.1%	926	1,072	-13.7%	713	896	-20.4%	121,023	143,628	-15.7%
COCONUT GROVE	1,701	2,000	-14.9%	833	1,052	-20.8%	651	777	-16.3%	40,217	48,636	-17.3%
CULMER	1,321	1,416	-6.7%	677	741	-8.7%	536	568	-5.6%	31,624	34,520	-8.4%
DADELAND NORTH	5,832	6,151	-5.2%	1,924	2,235	-13.9%	1,454	1,645	-11.6%	128,684	141,328	-8.9%
DADELAND SOUTH	7,120	7,434	-4.2%	2,580	2,923	-11.7%	2,000	2,242	-10.8%	159,249	172,777	-7.8%
DOUGLAS ROAD	3,555	3,793	-6.3%	1,333	1,421	-6.2%	969	1,010	-4.0%	79,562	86,997	-8.5%
DR. MARTIN LUTHER KING, JR.	1,162	1,181	-1.6%	621	664	-6.3%	472	431	9.4%	27,936	28,757	-2.9%
EARLINGTON HEIGHTS	1,582	1,808	-12.5%	894	1,016	-12.1%	730	804	-9.1%	38,851	44,829	-13.3%
GOVERNMENT CENTER	10,067	10,980	-8.3%	3,753	4,345	-13.6%	2,956	3,276	-9.8%	224,191	252,991	-11.4%
HIALEAH	1,286	1,421	-9.5%	613	673	-8.9%	449	514	-12.6%	30,242	34,250	-11.7%
MIAMI INTERNATIONAL AIRPORT	1,692	1,703	-0.7%	1,304	1,441	-9.5%	1,265	1,498	-15.6%	46,394	48,539	-4.4%
NORTHSIDE	1,367	1,634	-16.3%	851	1,089	-21.8%	652	824	-20.9%	34,296	41,877	-18.1%
OKEECHOBEE	1,137	1,178	-3.4%	398	401	-0.7%	253	275	-8.2%	25,070	26,718	-6.2%
OVERTOWN / ARENA	2,166	2,214	-2.1%	552	618	-10.6%	464	525	-11.7%	45,787	48,812	-6.2%
PALMETTO	1,358	1,579	-14.0%	348	438	-20.5%	216	269	-19.7%	28,742	34,906	-17.7%
SANTA CLARA	778	900	-13.5%	394	468	-15.8%	271	298	-9.0%	18,470	21,738	-15.0%
SOUTH MIAMI	2,914	3,364	-13.4%	1,173	1,487	-21.1%	849	1,105	-23.1%	65,953	79,323	-16.9%
TRI-RAIL	1,139	1,191	-4.3%	542	624	-13.2%	437	467	-6.4%	26,974	29,110	-7.3%
UNIVERSITY	2,595	2,492	4.2%	662	658	0.7%	490	448	9.4%	55,224	54,710	0.9%
VIZCAYA	1,321	1,510	-12.5%	604	685	-11.8%	448	454	-1.2%	30,622	35,498	-13.7%
TOTAL	64,976	70,949	-8.4%	25,101	28,920	-13.2%	19,523	22,105	-11.7%	1,469,448	1,656,929	-11.3%

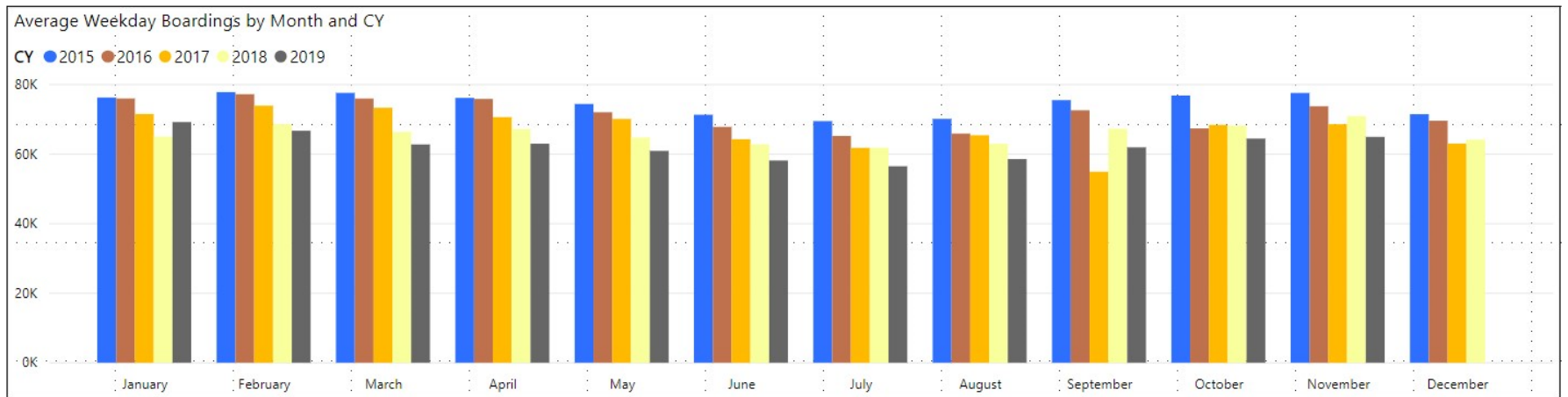
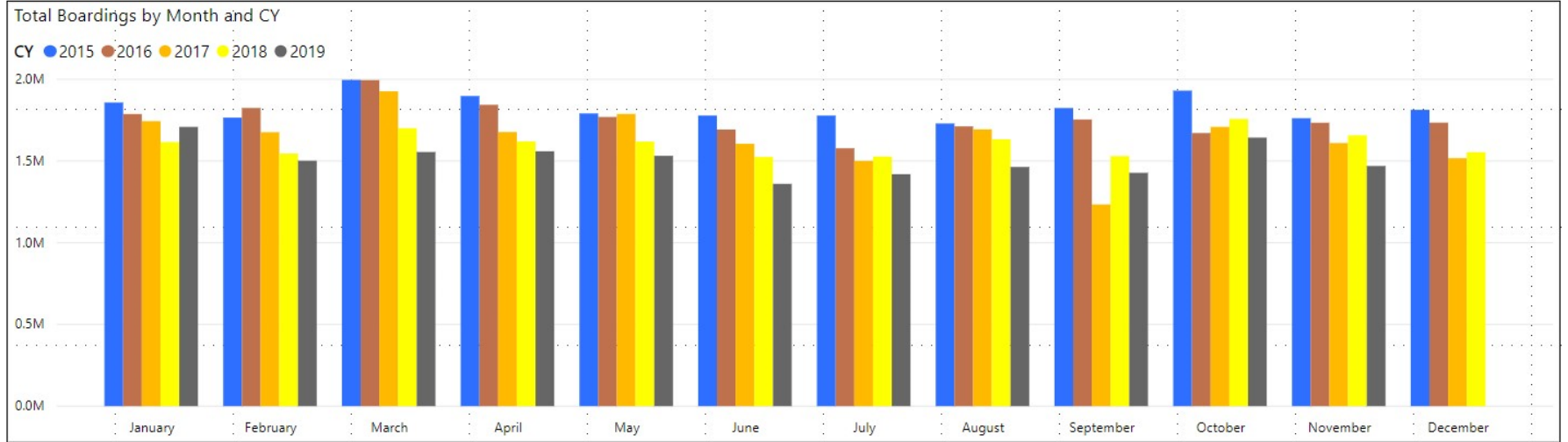
METRORAIL HOLIDAY BOARDINGS BY STATION

	Veterans Day	Veterans Day	Percent Change	Thanksgiving Day	Thanksgiving Day	Percent Change	Friday-After-Thanksgiving	Friday-After-Thanksgiving	Percent Change
STATIONS	2018	2019	19 vs 18	2018	2019	19 vs 18	2018	2019	19 vs 18
ALLAPATTAH	1,715	1,425	-16.9%	792	739	-6.7%	1,334	1,256	-5.8%
BRICKELL	5,586	5,006	-10.4%	2,035	1,800	-11.5%	3,950	3,628	-8.2%
BROWNSVILLE	818	666	-18.6%	437	377	-13.7%	673	639	-5.1%
CIVIC CENTER	4,527	4,174	-7.8%	897	681	-24.1%	2,315	2,024	-12.6%
COCONUT GROVE	1,518	1,277	-15.9%	623	553	-11.2%	1,182	1,006	-14.9%
CULMER	962	925	-3.8%	560	543	-3.0%	856	845	-1.3%
DADELAND NORTH	4,304	3,783	-12.1%	1,208	1,133	-6.2%	3,438	3,354	-2.4%
DADELAND SOUTH	5,169	4,887	-5.5%	1,973	1,658	-16.0%	3,737	3,651	-2.3%
DOUGLAS ROAD	2,508	2,355	-6.1%	877	812	-7.4%	1,816	1,856	2.2%
DR. MARTIN LUTHER KING, JR.	934	820	-12.2%	372	445	19.6%	625	755	20.8%
EARLINGTON HEIGHTS	1,404	1,231	-12.3%	721	662	-8.2%	1,077	1,090	1.2%
GOVERNMENT CENTER	6,134	5,418	-11.7%	2,724	2,197	-19.3%	5,023	4,780	-4.8%
HIALEAH	1,129	956	-15.3%	483	426	-11.8%	899	850	-5.5%
MIAMI INTERNATIONAL AIRPORT	1,747	1,650	-5.6%	1,166	1,232	5.7%	1,513	1,485	-1.9%
NORTHSIDE	1,213	1,109	-8.6%	704	641	-8.9%	1,268	1,078	-15.0%
OKEECHOBEE	871	784	-10.0%	240	279	16.3%	532	535	0.6%
OVERTOWN / ARENA	1,054	1,048	-0.6%	420	378	-10.0%	710	758	6.8%
PALMETTO	1,100	977	-11.2%	235	188	-20.0%	739	534	-27.7%
SANTA CLARA	676	576	-14.8%	355	286	-19.4%	552	547	-0.9%
SOUTH MIAMI	2,461	2,035	-17.3%	812	654	-19.5%	1,774	1,546	-12.9%
TRI-RAIL	1,002	961	-4.1%	393	358	-8.9%	727	689	-5.2%
UNIVERSITY	2,084	2,320	11.3%	263	240	-8.7%	601	683	13.6%
VIZCAYA	1,025	911	-11.1%	459	375	-18.3%	778	746	-4.1%
TOTAL	49,941	45,294	-9.3%	18,749	16,657	-11.2%	36,119	34,335	-4.9%

METRORAIL CUMULATIVE PERCENTAGE RIDERSHIP SHARE POWER BI™ VISUALIZATION



TOTAL MONTHLY AND AVERAGE WEEKDAY RIDERSHIP YEAR OVER YEAR COMPARISON CHARTS – METRORAIL POWER BI™ VISUALIZATION



**“TOP 5 / BOTTOM 5” RAIL STATIONS AVERAGE WEEKDAY RIDERSHIP PERFORMANCE
YEAR OVER YEAR COMPARISONS**

Station	Nov-19	Nov-18	Absolute Delta (1)	Percent Delta
UNIVERSITY	2,595	2,492	104	4.2%
MIAMI INTERNATIONAL AIRPORT	1,692	1,703	-11	-0.7%
Dr. MARTIN LUTHER KING, JR.	1,162	1,181	-19	-1.6%
OKEECHOBEE	1,137	1,178	-40	-3.4%
OVERTOWN	2,166	2,214	-48	-2.1%
GOVERNMENT CENTER (†)	10,067	10,980	-913	-8.3%
BRICKELL (†)	6,232	7,095	-863	-12.2%
CIVIC CENTER (†)	5,926	6,738	-812	-12.1%
SOUTH MIAMI (†)	2,914	3,364	-449	-13.4%
DADELAND NORTH	5,832	6,151	-318	-5.2%

(1) Averages rounded to the nearest boarding; only one station registered gains in November 2019.

(†) Government Center, Brickell, Civic Center and South Miami boardings were uniformly lower on a daily basis in November 2019 as compared with November 2018.

METRORAIL PARKING PATRONAGE SUMMARY

November 2019

PARK-RIDE LOT	ACTUAL CAPACITY (1)	ACTUAL OCCUPANCY (2)	PERCENT OCCUPANCY
DADELAND SOUTH	1,280	1,209	94%
DADELAND NORTH	1,963	1,914	98%
SOUTH MIAMI	1,081	779	72%
UNIVERSITY	260	256	98%
DOUGLAS ROAD	160	145	90%
COCONUT GROVE	100	97	97%
VIZCAYA	120	75	63%
CULMER	40	5	13%
SANTA CLARA	61	47	77%
ALLAPATTAH	74	15	20%
EARLINGTON HEIGHTS	361	148	41%
BROWNSVILLE	100	30	30%
DR. MARTIN LUTHER KING JR. (MDT)	62	51	82%
DR. MARTIN LUTHER KING JR. (GARAGE)	631	205	32%
NORTHSIDE	197	75	38%
HIALEAH	338	118	35%
OKEECHOBEE	1,398	352	25%
PALMETTO	700	404	58%
TOTAL	8,926	5,925	66%

Note: No parking at Brickell, Government Center, Overtown, Civic Center, and Metrorail-Trirail Transfer stations.

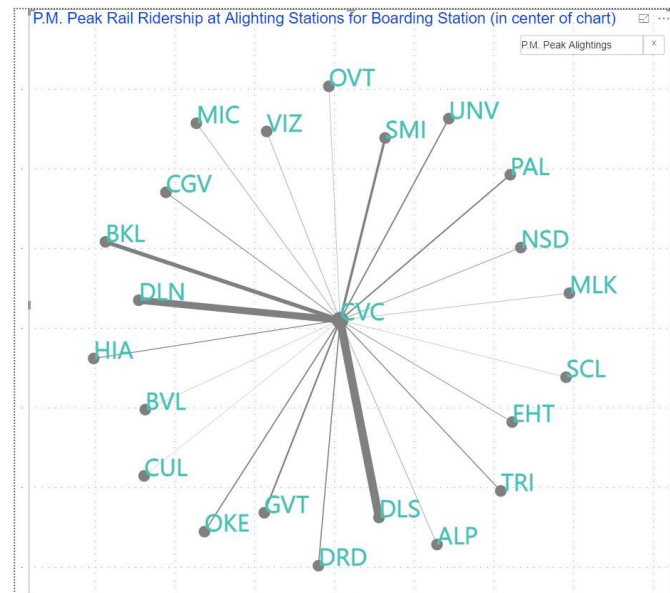
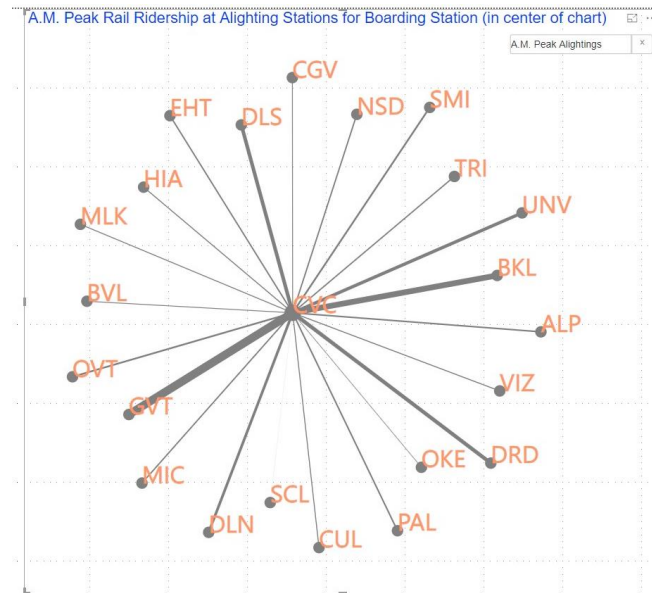
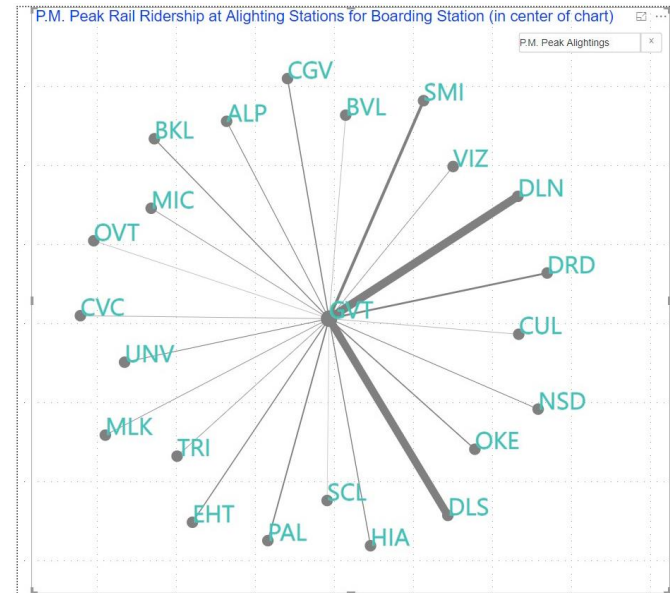
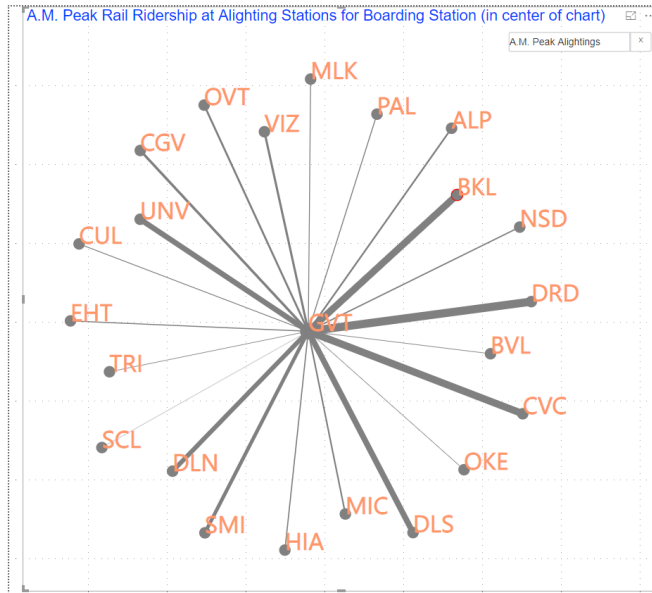
(1) Number of spaces could vary each week; shown are available spaces during final week of month.

(2) Averages rounded to nearest unit.

METRORAIL A.M. AND P.M. PEAK TRAVEL NETWORK CHARTS

SELECTED POINTS OF ORIGIN AND DESTINATION

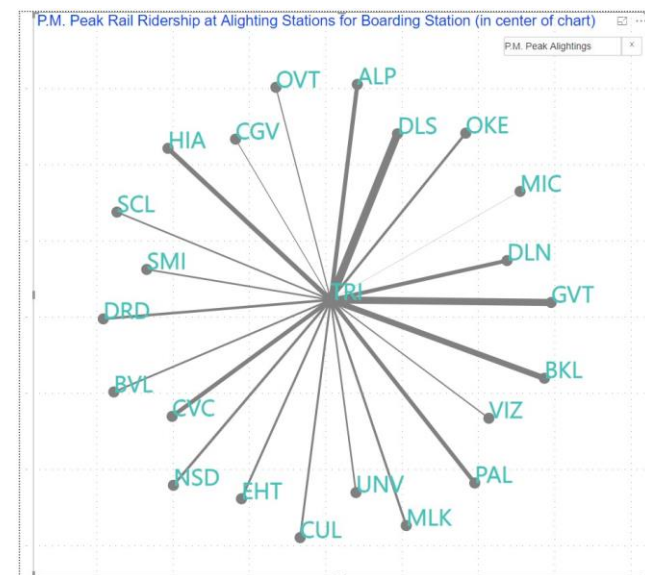
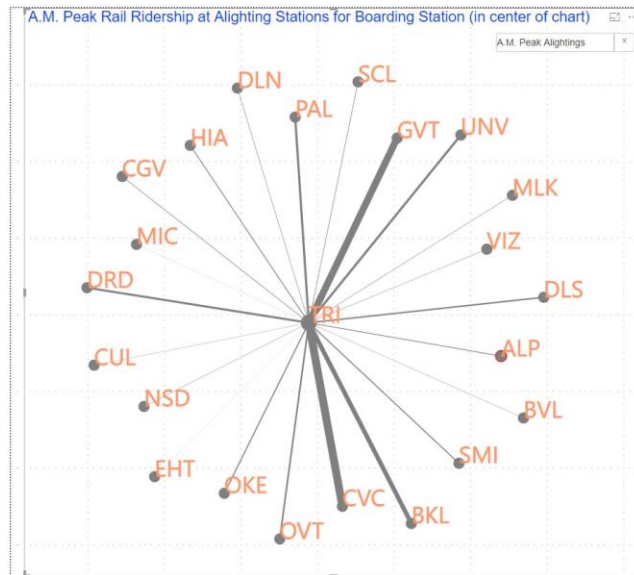
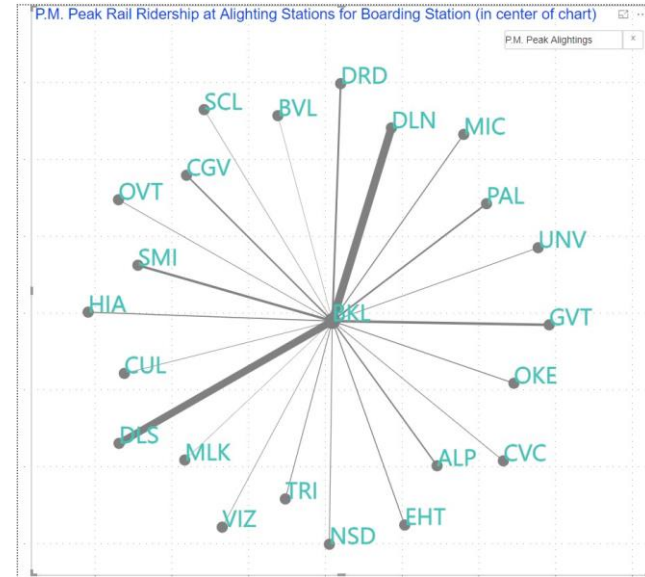
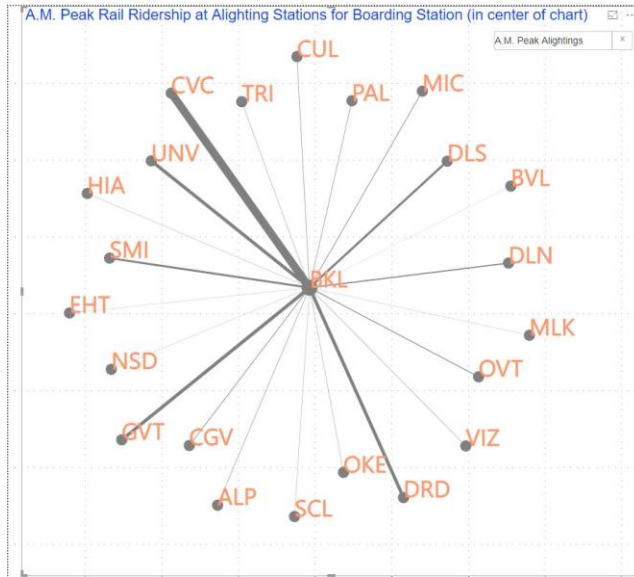
POWER BI™ VISUALIZATION



METRORAIL A.M. AND P.M. PEAK TRAVEL NETWORK CHARTS

SELECTED POINTS OF ORIGIN AND DESTINATION

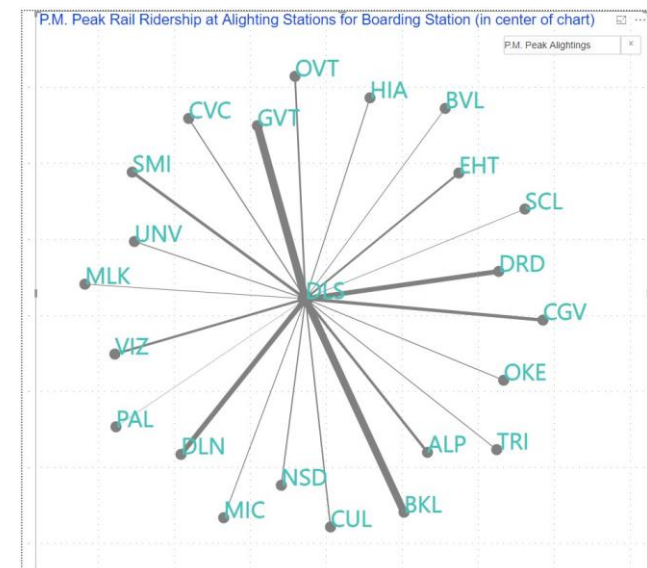
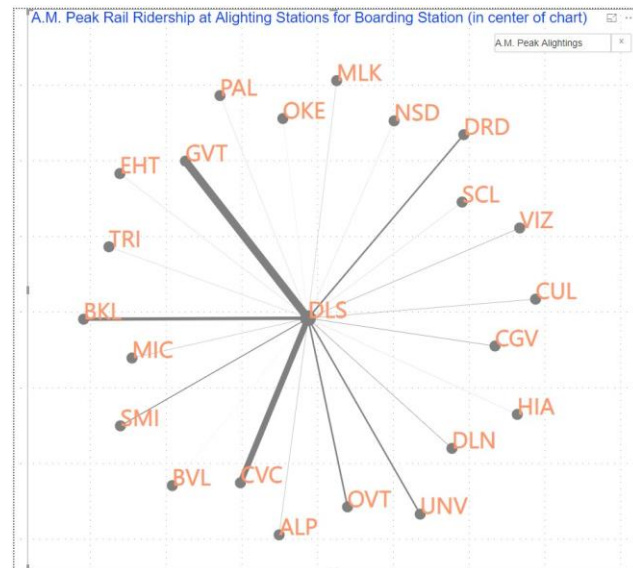
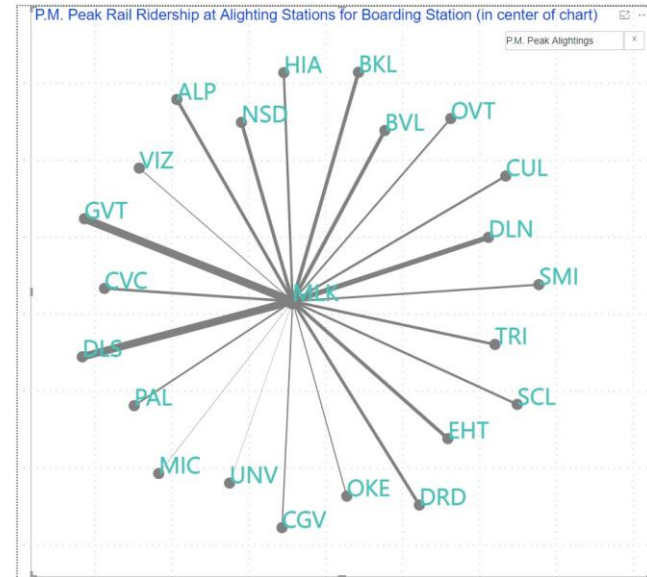
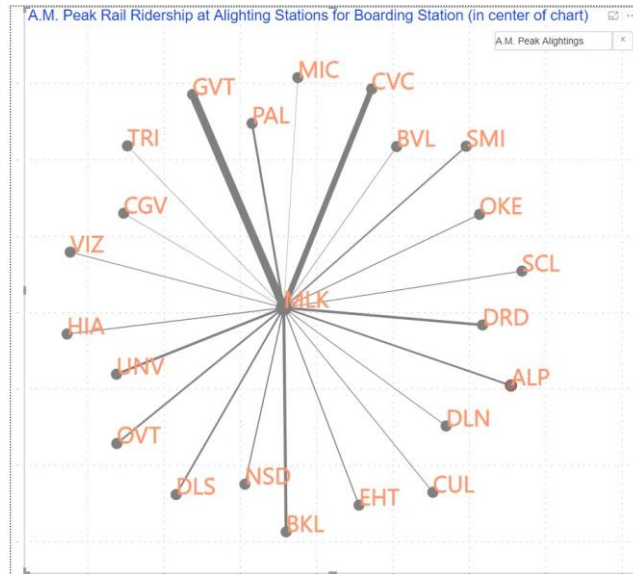
POWER BI™ VISUALIZATION



METRORAIL A.M. AND P.M. PEAK TRAVEL NETWORK CHARTS

SELECTED POINTS OF ORIGIN AND DESTINATION

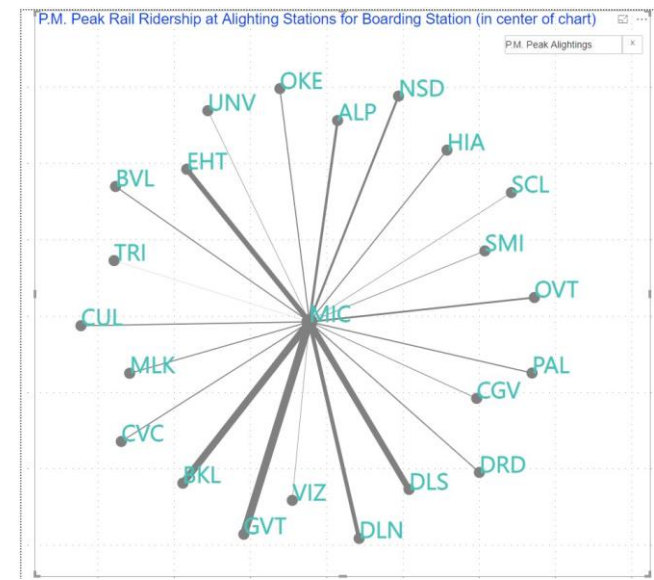
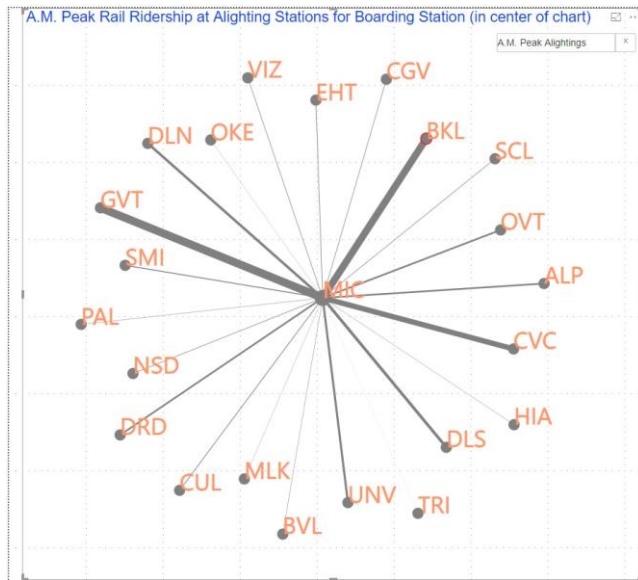
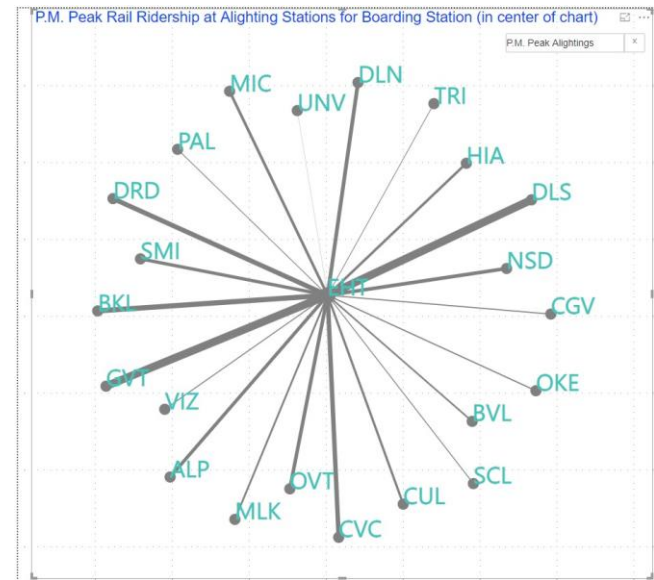
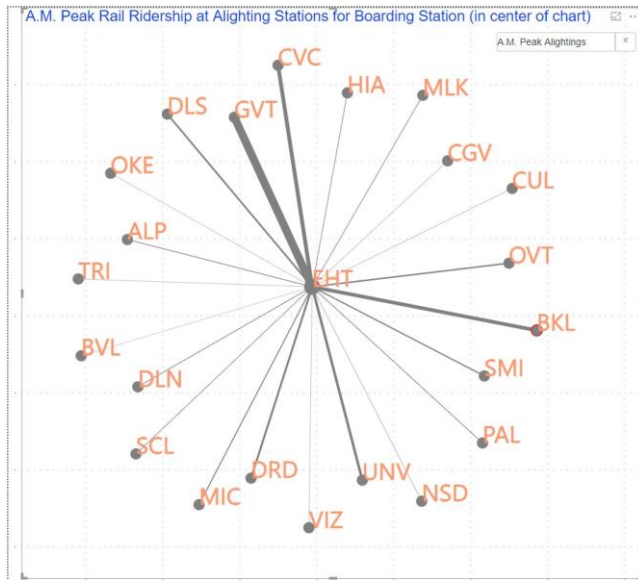
POWER BI™ VISUALIZATION



METRORAIL A.M. AND P.M. PEAK TRAVEL NETWORK CHARTS

SELECTED POINTS OF ORIGIN AND DESTINATION

POWER BI™ VISUALIZATION



Metromover



METROMOVER MONTHLY AND AVERAGE DAILY BOARDINGS BY STATION

	Average Weekday	Average Weekday	Percent Change	Average Saturday	Average Saturday	Percent Change	Average Sunday	Average Sunday	Percent Change	Total Monthly	Total Monthly	Percent Change
STATIONS	Nov-19	Nov-18	19 vs 18	Nov-19	Nov-18	19 vs 18	Nov-19	Nov-18	19 vs 18	Nov-19	Nov-18	19 vs 18
School Board	861	822	4.8%	685	609	12.6%	599	462	29.6%	23,318	21,741	7.3%
Omni	1,953	1,983	-1.5%	1,648	1,629	1.2%	1,290	1,097	17.6%	52,875	52,863	0.0%
Museum Park	174	218	-20.0%	285	349	-18.2%	198	271	-27.0%	6,114	7,349	-16.8%
Eleventh Street	259	299	-13.5%	286	251	13.9%	210	186	13.3%	7,523	8,130	-7.5%
Park West	338	367	-7.8%	351	396	-11.4%	266	224	18.6%	9,735	10,332	-5.8%
Freedom Tower	507	334	51.6%	565	510	10.8%	416	125	232.4%	14,710	8,886	65.5%
Government Center	7,714	7,460	3.4%	2,274	2,122	7.2%	1,735	1,508	15.1%	163,524	161,771	1.1%
Miami Avenue	469	439	6.8%	296	289	2.3%	247	218	13.3%	11,229	11,256	-0.2%
Third Street	368	330	11.5%	237	253	-6.3%	301	153	97.0%	9,927	8,517	16.6%
Knight Center	1,094	945	15.8%	512	425	20.6%	392	282	39.1%	25,503	22,230	14.7%
Bayfront Park	3,069	3,003	2.2%	2,354	2,242	5.0%	1,873	1,718	9.0%	81,642	79,014	3.3%
First Street	1,687	1,610	4.8%	1,234	1,231	0.3%	1,081	988	9.5%	44,358	42,642	4.0%
College/Bayside	2,333	2,207	5.7%	1,686	1,375	22.6%	1,490	734	103.0%	60,255	50,370	19.6%
College North	1,058	1,076	-1.7%	395	419	-5.8%	366	397	-8.0%	23,389	24,573	-4.8%
Wilkie D. Ferguson	568	519	9.3%	301	286	5.4%	250	245	2.1%	13,770	11,985	14.9%
Riverwalk	847	767	10.5%	524	482	8.9%	383	352	8.8%	20,933	19,175	9.2%
Fifth Street	553	342	61.6%	362	214	69.0%	291	165	76.1%	13,864	8,675	59.8%
Eighth Street	2,164	1,922	12.6%	1,719	1,569	9.5%	1,395	1,197	16.5%	58,129	51,830	12.2%
Tenth Street	756	843	-10.4%	576	565	1.8%	490	434	12.9%	19,998	21,806	-8.3%
Brickell	4,121	3,165	30.2%	2,571	1,989	29.3%	2,195	1,392	57.8%	103,088	79,070	30.4%
Financial District	1,492	1,363	9.5%	773	705	9.7%	612	492	24.3%	35,748	32,982	8.4%
TOTAL	32,384	30,015	7.9%	19,633	17,907	9.6%	16,077	12,638	27.2%	799,632	735,198	8.8%

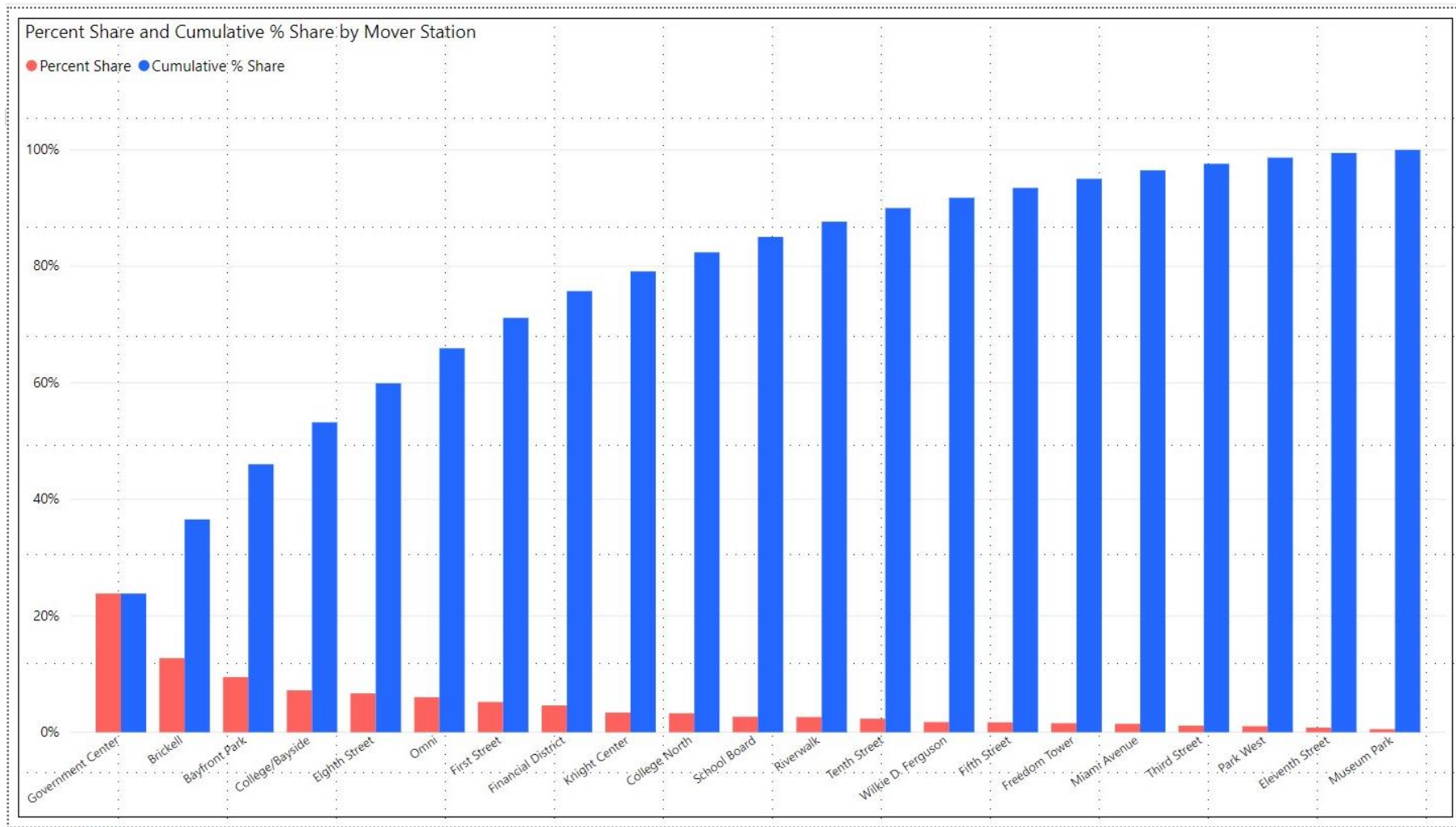
(1) Boardings at some stations contain estimates based on other data within November 2019

METROMOVER HOLIDAY BOARDINGS BY STATION

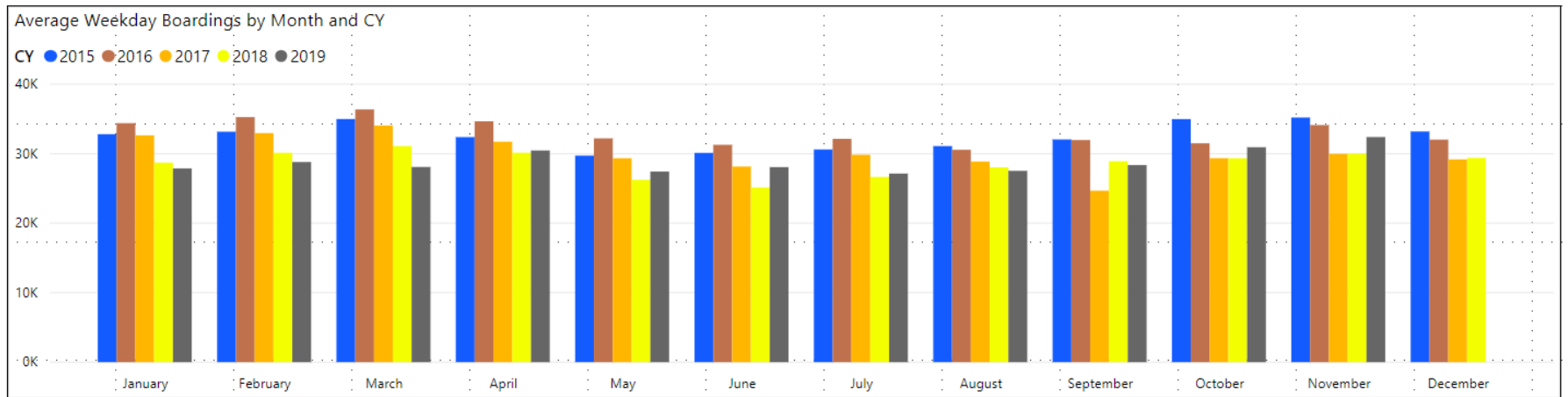
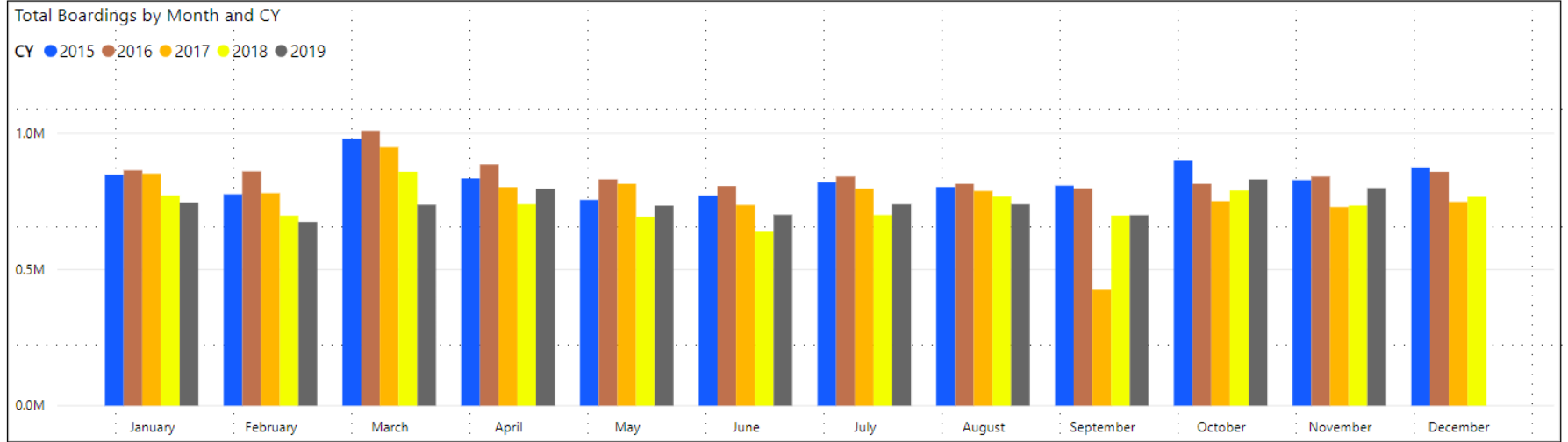
	Veterans Day	Veterans Day	Percent Change	Thanksgiving Day	Thanksgiving Day	Percent Change	Friday-After-Thanksgiving	Friday-After-Thanksgiving	Percent Change
STATIONS	2018	2019	19 vs 18	2018	2019	19 vs 18	2018	2019	19 vs 18
School Board	782	736	-5.9%	454	493	8.6%	610	768	25.9%
Omni	1,713	1,526	-10.9%	989	1,069	8.1%	1,589	1,727	8.7%
Museum Park	170	288	69.4%	144	131	-9.0%	424	347	-18.2%
Eleventh Street	316	237	-25.0%	140	150	7.1%	250	213	-14.8%
Park West	506	282	-44.3%	132	132	0.0%	240	413	72.1%
Freedom Tower		259			178			668	
Government Center	2,466	2,682	8.8%	1,074	1,323	23.2%	1,974	2,364	19.8%
Miami Avenue	339	327	-3.5%	246			303		
Third Street	248	366	47.6%	147	193	31.3%	231	360	55.8%
Knight Center	694	729	5.0%	260	340	30.8%	491	609	24.0%
Bayfront Park	2,562	2,684	4.8%	1,230	1,554	26.3%	2,325	2,909	25.1%
First Street	1,364	1,394	2.2%	583	735	26.1%	1,234	1,373	11.3%
College/Bayside		1,372			924			1,584	
College North	371	330	-11.1%	156	168	7.7%	329	405	23.1%
Wilkie D. Ferguson		427			243			377	
Riverwalk	423	646	52.7%	316	360	13.9%	528	520	-1.5%
Fifth Street	199	400	101.0%	179	216	20.7%	279	325	16.5%
Eighth Street	1,748	1,807	3.4%	617	840	36.1%	1,887	2,361	25.1%
Tenth Street	658	569	-13.5%	300	317	5.7%	825	664	-19.5%
Brickell	2,298	2,984	29.9%	1,178	1,529	29.8%	1,931	2,751	42.5%
Financial District	1,105	1,052	-4.8%	388	475	22.4%	798	1,048	31.3%
TOTAL	17,962	21,097	17.5%	8,533	11,370	33.2%	16,248	21,786	34.1%

(1) No data reported at several stations, on all three holidays

METROMOVER CUMULATIVE PERCENTAGE RIDERSHIP SHARE POWER BI™ VISUALIZATION



TOTAL MONTHLY AND AVERAGE WEEKDAY RIDERSHIP YEAR OVER YEAR COMPARISON CHARTS – METROMOVER POWER BI™ VISUALIZATION



“TOP 5 / BOTTOM 5” MOVER STATIONS AVERAGE WEEKDAY RIDERSHIP PERFORMANCE YEAR OVER YEAR COMPARISONS

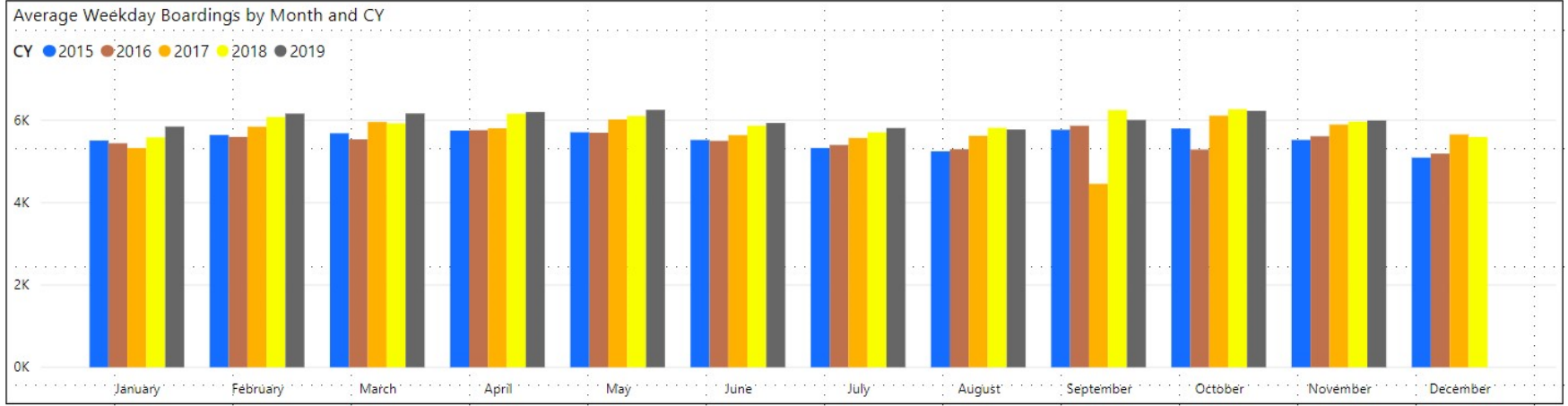
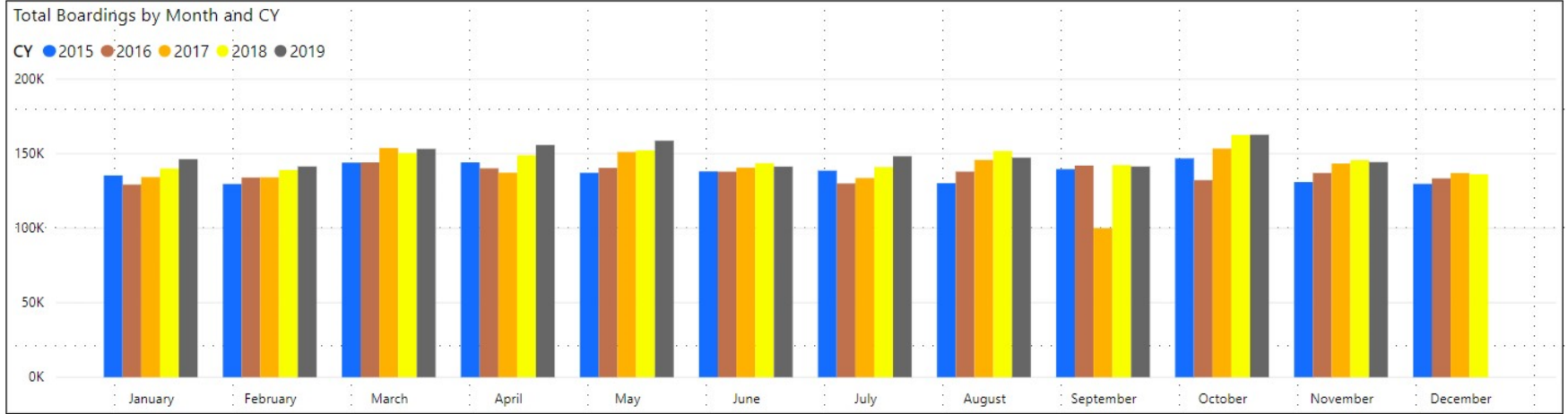
Station	Nov-19	Nov-18	Absolute Delta (1)	Percent Delta
Brickell (2)	4,121	3,165	956	30.2%
Government Center	7,714	7,460	254	3.4%
Eighth Street (2)	2,164	1,922	242	12.6%
Fifth Street (2)	553	342	211	61.6%
Freedom Tower (3)	507	334	173	51.6%
Tenth Street	756	843	-87	-10.4%
Museum Park	174	218	-44	-20.0%
Eleventh Street	259	299	-40	-13.5%
Omni	1,953	1,983	-30	-1.5%
Park West	338	367	-29	-7.8%

- (1) Averages rounded to the nearest boarding
- (2) Automatic Passenger Counter (APC) data at Brickell and Eighth Street was significantly and uniformly much higher in November 2019 compared to November 2018, most likely due to the increasingly popular Brickell City Center destination. Data at Fifth Street in November 2018 shows significantly higher fluctuations from day-to-day than in November 2019, suggesting likely sensor malfunctions and resulting loss of data at that station a year ago.
- (3) There were significant daily fluctuations in Freedom Tower boardings in November 2019, suggesting possible APC system data recording issues at that station, which are being researched.

Special Transportation Services



TOTAL MONTHLY AND AVERAGE WEEKDAY RIDERSHIP YEAR OVER YEAR COMPARISON CHARTS – SPECIAL TRANSPORTATION SERVICES (S.T.S.) POWER BI™ VISUALIZATION



Ridership Seasonality



November 2019

RIDERSHIP SEASONALITY – PERCENT RIDERSHIP SHARE BY MONTH AND CALENDAR YEAR FOR EACH MODE POWER BI™ VISUALIZATION



Note: the prominent dip seen in the fall of 2017 is due to Hurricane Irma.