



TRANSPORTATION AND PUBLIC WORKS

RIDERSHIP TECHNICAL REPORT

Division of Performance and Materials Management



July 2020

Table of Contents

<i>Table of Contents</i>	2-3
All Modes Overview	4
Total Monthly Weekday, Saturday and Sunday Monthly Boardings By Mode	5
Average Weekday, Saturday and Sunday Boardings by Mode	6
All-Modes Combined Total Monthly Ridership Comparisons By Fiscal Year	7
All Modes Combined Total Monthly and Average Weekday Ridership – Year over Year Comparison Charts	8
Metrobus Total Monthly Ridership Comparisons by Fiscal Year	9
Metrorail Total Monthly Ridership Comparisons by Fiscal Year	10
Metromover Total Monthly Ridership Comparisons by Fiscal Year	11
STS Total Monthly Ridership Comparisons by Fiscal Year	12
Average Weekday Ridership – Modal Splits	13
Metrobus	14
Monthly and Average Daily Bus Boardings by Route	15-18
Metrobus Holiday Boardings By Route	19
Bus Ridership by Service Type	20-21
Bus Routes as Ranked by Percentage of Average Weekday Ridership	22
Metrobus Cumulative Percentage Average Weekday Ridership Share by Route (Top 75%)	23
Total Monthly and Average Weekday Rail Ridership – Year over Year Comparison Charts	24

Table of Contents (continued)

Metrobus (Continued)

Bus “Top 5 / Bottom 5” Routes Average Weekday Ridership Performance 25

Metrobus Parking Patronage Summary 26

Metrorail 27

Monthly and Average Daily Rail Boardings by Station 28

Metrorail Holiday Boardings by Station 29

Metrorail Cumulative Percentage Average Weekday Ridership Share 30

Total Monthly and Average Weekday Rail Ridership – Year over Year Comparison Charts 31

“Top 5 / Bottom 5” Stations Average Weekday Ridership Performance 32

Metrorail Parking Patronage Summary 33

Metromover 34

Monthly and Average Daily Mover Boardings by Station 35

Metromover Cumulative Percentage Average Weekday Ridership Share 36

Total Monthly and Average Weekday Mover Ridership – Year over Year Comparison Charts 37

“Top 5 / Bottom 5” Stations Average Weekday Ridership Performance 38

Special Transportation Services (STS) 39

Total Monthly and Average Weekday STS Ridership – Year over Year Comparison Charts 40

Ridership Seasonality 41

Ridership Seasonality – Percent Ridership Share by Month and Calendar year for Each Mode 42

All Modes Overview



TOTAL MONTHLY WEEKDAY, SATURDAY AND SUNDAY BOARDINGS BY MODE

July 2020

TRAVEL MODE	MONTH'S TOTAL WEEKDAYS RIDERSHIP (*)	MONTH'S TOTAL SATURDAYS RIDERSHIP	MONTH'S TOTAL SUNDAYS RIDERSHIP	TOTAL MONTHLY RIDERSHIP	% CHANGE vs Jul 2019 TOTAL MONTH RIDERSHIP
METROBUS (1)	1,955,895	223,246	187,608	2,366,749	-42.2%
METRORAIL (2)	535,190	53,214	44,560	632,964	-55.4%
METROMOVER (3)	167,807	22,459	20,330	210,596	-71.5%
STS (4)	53,123	5,282	3,360	61,765	-58.3%
TOTAL	2,712,015	304,201	255,858	3,272,074	-48.9%

(*) Weekday ridership includes Friday, July 3, 2020 (Independence Day Holiday observance). Ridership on that day was as follows:

Metrobus	86,518
Metrorail	18,681
Metromover	6,265
STS	2,116

- (1) As a result of the SARS-CoV-2 pandemic, Metrobus rides became fare-free on March 22, 2020; consequently, NextFare System farebox data was replaced by bus automatic passenger counter data starting on that date.
- (2) As a result of the SARS-CoV-2 pandemic, Metrorail rides became fare-free on March 22, 2020; consequently, NextFare System faregate data was replaced manually-counted data and other estimates starting on that date.
- (3) Beginning March 13, 2020 (day of National Emergency Declaration due to SARS-CoV-2 pandemic), only raw data from Metromover automatic passenger counters is reported; no estimates are performed after March 13, 2020.
- (4) Paratransit ridership data as reported by the contractor.

AVERAGE WEEKDAY, SATURDAY AND SUNDAY BOARDINGS BY MODE
July 2020

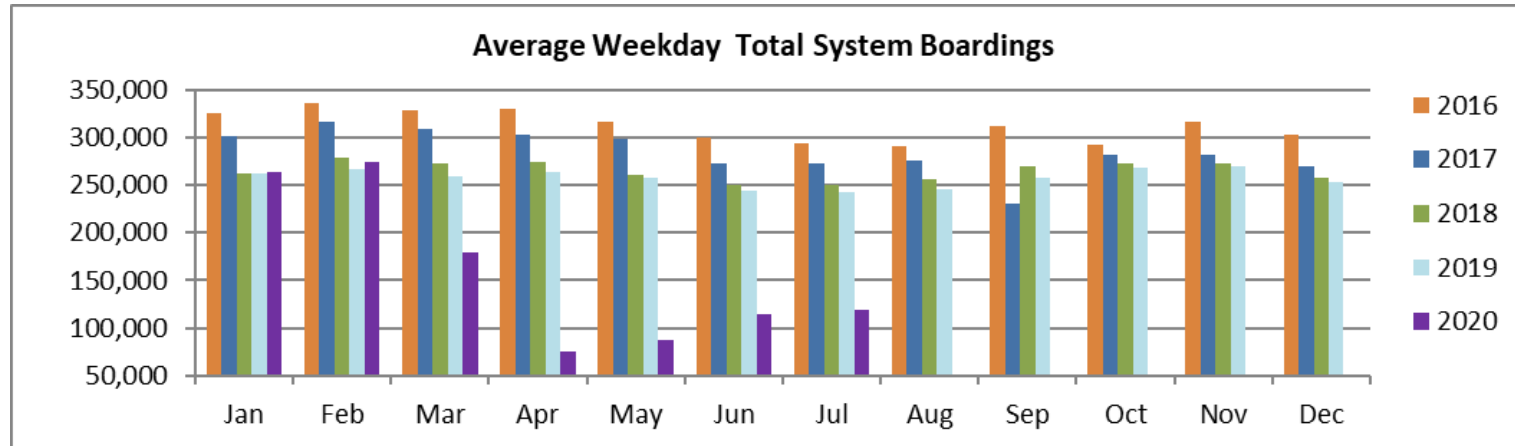
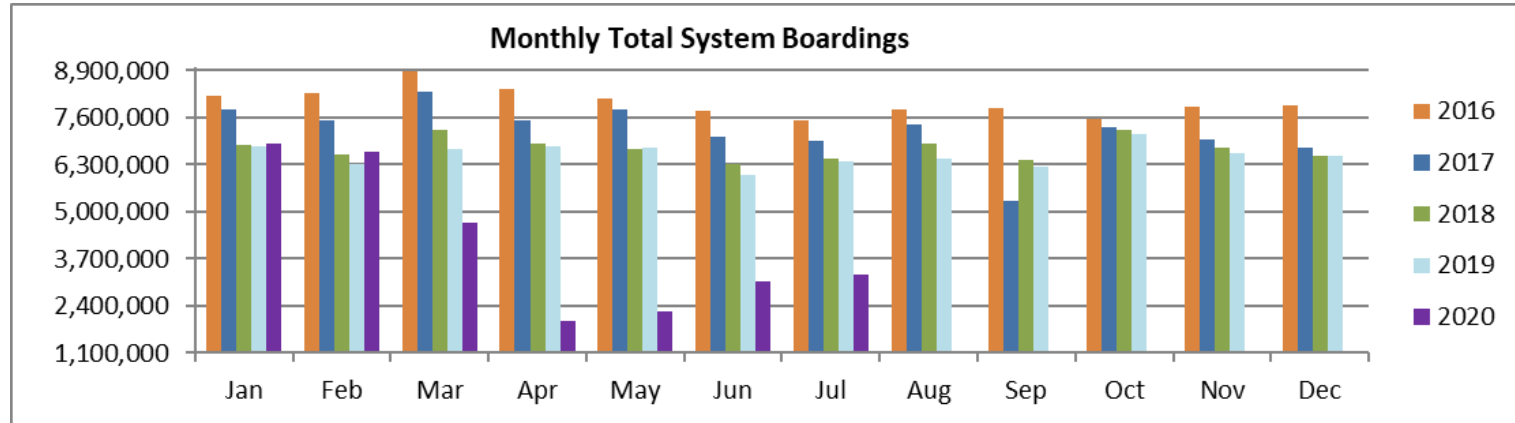
Travel Mode	Average Weekday (*)	Average Saturday	Average Sunday	% Change Jul 2019 Weekday	% Change Jul 2019 Saturday	% Change Jul 2019 Sunday
METROBUS	85,101	55,814	46,902	-44.5%	-38.6%	-34.7%
METRORAIL	23,478	13,304	11,140	-58.5%	-38.1%	-33.1%
METROMOVER	7,343	5,615	5,083	-72.9%	-66.0%	-63.2%
STS	2,310	1,321	840	-60.3%	-46.5%	-60.1%
Totals (1)	118,231	76,053	63,965	-51.3%	-42.1%	-38.8%

(*) Average weekday ridership includes Independence Day as observed (7/3/20) for Metrobus and STS, but excludes it for Metrorail and Metromover

ALL-MODES COMBINED TOTAL MONTHLY RIDERSHIP COMPARISONS BY FISCAL YEAR

All Modes Month						Variances				
	FY 16	FY 17	FY 18	FY 19	FY 20	16 TO 17	17 TO 18	18 TO 19	19 TO 20	16 TO 20
Oct	9,035,169	7,543,706	7,322,886	7,265,208	7,144,116	-16.5%	-2.9%	-0.8%	-1.7%	-20.9%
Nov	8,204,872	7,894,500	7,005,032	6,783,315	6,610,671	-3.8%	-11.3%	-3.2%	-2.5%	-19.4%
Dec	8,461,341	7,919,860	6,783,192	6,538,734	6,549,392	-6.4%	-14.4%	-3.6%	0.2%	-22.6%
Jan	8,198,929	7,814,784	6,834,741	6,797,602	6,890,225	-4.7%	-12.5%	-0.5%	1.4%	-16.0%
Feb	8,286,466	7,505,125	6,591,531	6,312,033	6,671,991	-9.4%	-12.2%	-4.2%	5.7%	-19.5%
Mar	8,874,636	8,317,082	7,244,805	6,712,624	4,694,315	-6.3%	-12.9%	-7.3%	-30.1%	-47.1%
Apr	8,394,885	7,513,151	6,869,802	6,802,085	1,989,545	-10.5%	-8.6%	-1.0%	-70.8%	-76.3%
May	8,132,723	7,841,691	6,742,402	6,755,829	2,258,413	-3.6%	-14.0%	0.2%	-66.6%	-72.2%
Jun	7,778,787	7,069,455	6,318,979	6,026,467	3,082,213	-9.1%	-10.6%	-4.6%	-48.9%	-60.4%
Jul	7,520,144	6,969,807	6,449,526	6,402,110	3,272,074	-7.3%	-7.5%	-0.7%	-48.9%	-56.5%
Aug	7,836,923	7,408,607	6,879,929	6,460,375		-5.5%	-7.1%	-6.1%		
Sep	7,848,211	5,284,604	6,412,945	6,240,212		-32.7%	21.4%	-2.7%		
FY Total	98,573,086	89,082,372	81,455,770	79,096,594		-9.6%	-8.6%	-2.9%		

TOTAL MONTHLY AND AVERAGE WEEKDAY RIDERSHIP YEAR OVER YEAR COMPARISON CHARTS – ALL MODES COMBINED



METROBUS TOTAL MONTHLY RIDERSHIP COMPARISONS BY FISCAL YEAR

Bus			Variance			Variance			Variance		
	FY 16	FY 17	16 to 17	FY 18	17 to 18	FY 19	18 to 19	FY 20	19 to 20	16 to 20	
Oct	6,058,615	4,925,781	-18.7%	4,709,590	-4.4%	4,554,886	-3.3%	4,507,012	-1.1%	-25.6%	
Nov	5,483,456	5,181,524	-5.5%	4,522,250	-12.7%	4,245,535	-6.1%	4,197,225	-1.1%	-23.5%	
Dec	5,642,424	5,192,692	-8.0%	4,380,099	-15.6%	4,081,581	-6.8%	4,126,990	1.1%	-26.9%	
Jan	5,417,604	5,084,085	-6.2%	4,307,001	-15.3%	4,195,911	-2.6%	4,316,998	2.9%	-20.3%	
Feb	5,467,632	4,914,307	-10.1%	4,208,811	-14.4%	3,994,019	-5.1%	4,123,083	3.2%	-24.6%	
Mar	5,725,541	5,287,813	-7.6%	4,534,564	-14.2%	4,266,768	-5.9%	3,136,162	-26.5%	-45.2%	
Apr	5,524,501	4,895,697	-11.4%	4,360,997	-10.9%	4,291,135	-1.6%	1,544,316	-64.0%	-72.0%	
May	5,391,463	5,087,877	-5.6%	4,277,628	-15.9%	4,330,922	1.2%	1,734,609	-59.9%	-67.8%	
Jun	5,141,601	4,586,556	-10.8%	4,009,340	-12.6%	3,823,863	-4.6%	2,210,725	-42.2%	-57.0%	
Jul	4,970,953	4,539,259	-8.7%	4,080,664	-10.1%	4,094,906	0.3%	2,366,749	-42.2%	-52.4%	
Aug	5,172,498	4,780,589	-7.6%	4,326,980	-9.5%	4,109,613	-5.0%				
Sep	5,154,265	3,524,818	-31.6%	4,041,992	14.7%	3,971,220	-1.8%				
FY Total	65,150,553	58,000,998	-11.0%	51,759,916	-10.8%	49,960,359	-3.5%				

METRORAIL TOTAL MONTHLY RIDERSHIP COMPARISONS BY FISCAL YEAR

Rail	Variance			Variance		Variance		Variance		Variance
	FY 16	FY 17	16 to 17	FY 18	17 to 18	FY 19	18 to 19	FY 20	19 to 20	16 to 20
Oct	1,930,352	1,670,933	-13.4%	1,708,564	2.3%	1,757,225	2.8%	1,643,166	-6.5%	-14.9%
Nov	1,761,820	1,734,267	-1.6%	1,609,888	-7.2%	1,656,929	2.9%	1,469,448	-11.3%	-16.6%
Dec	1,813,506	1,734,768	-4.3%	1,517,341	-12.5%	1,553,804	2.4%	1,433,928	-7.7%	-20.9%
Jan	1,787,476	1,743,638	-2.5%	1,615,576	-7.3%	1,708,695	5.8%	1,576,340	-7.7%	-11.8%
Feb	1,824,256	1,676,215	-8.1%	1,545,581	-7.8%	1,501,458	-2.9%	1,549,118	3.2%	-15.1%
Mar	1,994,796	1,926,434	-3.4%	1,700,714	-11.7%	1,554,851	-8.6%	1,027,319	-33.9%	-48.5%
Apr	1,843,808	1,677,459	-9.0%	1,619,890	-3.4%	1,559,446	-3.7%	287,803	-81.5%	-84.4%
May	1,769,327	1,787,885	1.0%	1,618,504	-9.5%	1,531,597	-5.4%	337,696	-78.0%	-80.9%
Jun	1,692,476	1,605,234	-5.2%	1,524,311	-5.0%	1,359,966	-10.8%	608,758	-55.2%	-64.0%
Jul	1,577,572	1,500,243	-4.9%	1,527,380	1.8%	1,419,158	-7.1%	632,964	-55.4%	-59.9%
Aug	1,711,665	1,693,524	-1.1%	1,632,471	-3.6%	1,463,646	-10.3%			
Sep	1,753,985	1,234,135	-29.6%	1,530,088	24.0%	1,427,726	-6.7%			
Total	21,461,039	19,984,735	-6.9%	19,150,308	-4.2%	18,494,501	-3.4%			

METROMOVER TOTAL MONTHLY RIDERSHIP COMPARISONS BY FISCAL YEAR

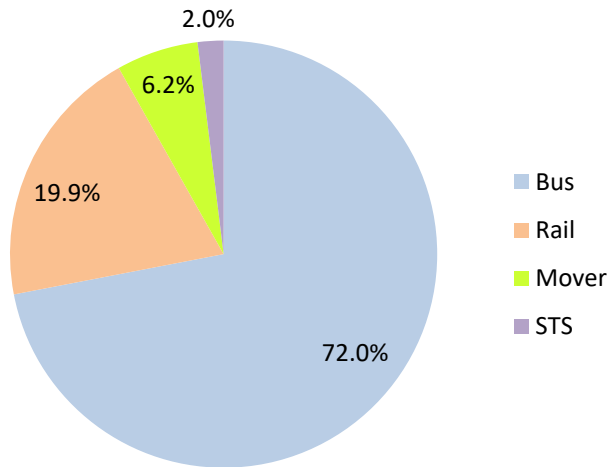
Mover	FY 16	FY 17	Variance 16 to 17	FY 18	Variance 17 to 18	FY 19	Variance 18 to 19	FY 20	Variance 19 to 20	Variance 16 to 20
Oct	899,379	814,781	-9.4%	751,323	-7.8%	790,533	5.2%	831,234	5.1%	-7.6%
Nov	828,643	841,679	1.6%	729,519	-13.3%	735,198	0.8%	799,632	8.8%	-3.5%
Dec	875,701	858,961	-1.9%	748,797	-12.8%	767,239	2.5%	849,832	10.8%	-3.0%
Jan	864,630	852,788	-1.4%	772,122	-9.5%	746,728	-3.3%	847,773	13.5%	-1.9%
Feb	860,579	780,514	-9.3%	698,107	-10.6%	675,160	-3.3%	855,398	26.7%	-0.6%
Mar	1,010,118	949,045	-6.0%	859,143	-9.5%	737,814	-14.1%	441,200	-40.2%	-56.3%
Apr	886,427	802,778	-9.4%	740,036	-7.8%	795,696	7.5%	130,549	-83.6%	-85.3%
May	831,477	814,791	-2.0%	694,106	-14.8%	734,645	5.8%	146,454	-80.1%	-82.4%
Jun	806,774	737,042	-8.6%	641,675	-12.9%	701,318	9.3%	203,637	-71.0%	-74.8%
Jul	841,630	796,649	-5.3%	700,462	-12.1%	739,814	5.6%	210,596	-71.5%	-75.0%
Aug	814,796	788,734	-3.2%	768,728	-2.5%	739,785	-3.8%			
Sep	797,995	425,641	-46.7%	698,505	64.1%	699,879	0.2%			
Total	10,318,149	9,463,403	-8.3%	8,802,523	-7.0%	8,863,809	0.7%			

SPECIAL TRANSPORTATION SERVICES (STS) TOTAL MONTHLY RIDERSHIP COMPARISONS BY FISCAL YEAR

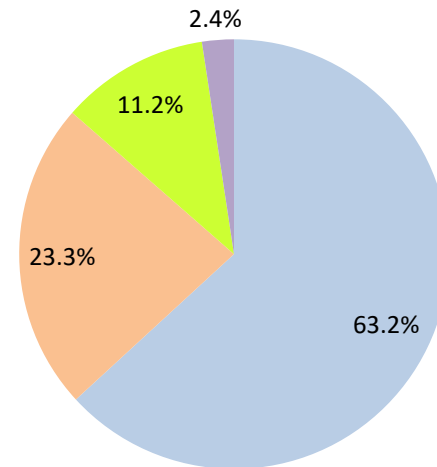
STS	FY 16	FY 17	Variance 16 to 17	FY 18	Variance 17 to 18	FY 19	Variance 18 to 19	FY 20	Variance 19 to 20	Variance 16 to 20
Oct	146,823	132,211	-10.0%	153,409	16.0%	162,564	6.0%	162,704	0.1%	10.8%
Nov	130,953	137,030	4.6%	143,375	4.6%	145,653	1.6%	144,366	-0.9%	10.2%
Dec	129,710	133,439	2.9%	136,955	2.6%	136,110	-0.6%	138,642	1.9%	6.9%
Jan	129,219	134,273	3.9%	140,042	4.3%	146,268	4.4%	149,114	1.9%	15.4%
Feb	133,999	134,089	0.1%	139,032	3.7%	141,396	1.7%	144,392	2.1%	7.8%
Mar	144,181	153,790	6.7%	150,384	-2.2%	153,191	1.9%	89,634	-41.5%	-37.8%
Apr	140,149	137,217	-2.1%	148,879	8.5%	155,808	4.7%	26,877	-82.7%	-80.8%
May	140,456	151,138	7.6%	152,164	0.7%	158,665	4.3%	39,654	-75.0%	-71.8%
Jun	137,936	140,623	1.9%	143,653	2.2%	141,320	-1.6%	59,093	-58.2%	-57.2%
Jul	129,989	133,656	2.8%	141,020	5.5%	148,232	5.1%	61,765	-58.3%	-52.5%
Aug	137,964	145,760	5.7%	151,750	4.1%	147,331	-2.9%			
Sep	141,966	100,010	-29.6%	142,360	42.3%	141,387	-0.7%			
Total	1,643,345	1,633,236	-0.6%	1,743,023	6.7%	1,777,925	2.0%			

AVERAGE WEEKDAY RIDERSHIP - MODAL SPLITS

July 2020



July 2019



Metrobus



July 2020

METROBUS MONTHLY AND AVERAGE DAILY BOARDINGS BY ROUTE

Route	Average Weekday	Average Weekday	Percent Change	Average Saturday	Average Saturday	Percent Change	Average Sunday	Average Sunday	Percent Change	Total Monthly	Total Monthly	Percent Change
	Jul-20	Jul-19	20 vs 19	Jul-20	Jul-19	20 vs 19	Jul-20	Jul-19	20 vs 19	Jul-20	Jul-19	20 vs 19
1 (*)	151	306	-50.6%	166	182	-8.9%	137	202	-32.0%	4,688	8,462	-44.6%
2	1,458	2,191	-33.5%	816	1,499	-45.6%	546	1,060	-48.5%	38,983	59,504	-34.5%
3	2,894	4,710	-38.6%	2,807	5,112	-45.1%	2,151	4,178	-48.5%	86,391	144,949	-40.4%
7	1,654	3,009	-45.0%	906	1,754	-48.3%	712	1,450	-50.9%	44,508	80,453	-44.7%
8	2,284	3,563	-35.9%	1,497	1,974	-24.2%	1,140	1,718	-33.7%	63,068	94,868	-33.5%
9	3,324	4,936	-32.7%	2,273	2,968	-23.4%	1,625	2,303	-29.5%	92,046	131,987	-30.3%
10	792	1,976	-59.9%	1,294	1,711	-24.4%	960	1,324	-27.5%	27,220	56,944	-52.2%
11	4,055	6,758	-40.0%	2,991	5,131	-41.7%	2,304	3,866	-40.4%	114,446	188,534	-39.3%
12	1,423	2,568	-44.6%							32,726	56,501	-42.1%
16	816	1,616	-49.5%	1,104	1,349	-18.2%	624	856	-27.1%	25,683	45,222	-43.2%
17	2,118	3,357	-36.9%	1,534	2,376	-35.5%	1,149	1,673	-31.4%	59,441	91,720	-35.2%
19	634	1,277	-50.4%							14,578	28,094	-48.1%
21	1,393	1,755	-20.7%							32,030	38,618	-17.1%
22	1,633	3,260	-49.9%	1,464	1,959	-25.3%	1,154	1,502	-23.2%	48,029	87,065	-44.8%
24 - Coral Way Limited	977	1,742	-43.9%	616	1,154	-46.6%	631	932	-32.3%	27,454	47,591	-42.3%
27	3,350	6,265	-46.5%	2,452	3,877	-36.8%	1,924	2,976	-35.3%	94,558	168,204	-43.8%
29 (*)	229	591	-61.3%							5,261	13,001	-59.5%
31 - BUSWAY LOCAL	488	995	-51.0%	532	844	-37.0%	411	644	-36.2%	14,986	28,478	-47.4%
32	1,348	2,239	-39.8%	627	1,012	-38.1%	545	742	-26.5%	35,688	57,016	-37.4%
33	576	1,482	-61.1%	439	893	-50.8%	323	602	-46.3%	16,293	39,189	-58.4%
34 EXPRESS (*)	584	1,758	-66.8%							13,430	38,665	-65.3%
35 (*)	1,349	2,199	-38.6%	806	1,145	-29.6%	662	926	-28.5%	36,911	57,583	-35.9%
36	1,504	2,323	-35.3%	1,025	1,134	-9.6%	880	1,056	-16.7%	42,205	60,930	-30.7%
37	1,771	3,137	-43.5%	1,147	2,082	-44.9%	1,037	1,734	-40.2%	49,475	86,005	-42.5%
38	3,397	6,013	-43.5%	2,842	4,679	-39.3%	2,740	3,665	-25.2%	100,447	169,322	-40.7%
39 EXPRESS (*)	99	826	-88.0%							2,280	18,167	-87.4%

METROBUS MONTHLY AND AVERAGE DAILY BOARDINGS BY ROUTE

Route	Average Weekday	Average Weekday	Percent Change	Average Saturday	Average Saturday	Percent Change	Average Sunday	Average Sunday	Percent Change	Total Monthly	Total Monthly	Percent Change
	Jul-20	Jul-19	20 vs 19	Jul-20	Jul-19	20 vs 19	Jul-20	Jul-19	20 vs 19	Jul-20	Jul-19	20 vs 19
40	863	1,597	-46.0%	379	642	-41.0%	294	474	-37.9%	22,535	40,066	-43.8%
42	466	800	-41.7%	313	566	-44.7%	247	350	-29.4%	12,963	21,623	-40.0%
46 - LIBERTY CITY CONN. (*)	14	23	-42.3%							311	516	-39.7%
51 - FLAGLER MAX	1,403	2,866	-51.1%							32,268	63,055	-48.8%
52	601	1,184	-49.2%	441	645	-31.5%	293	471	-37.9%	16,767	30,986	-45.9%
54	2,142	2,781	-23.0%	1,331	1,692	-21.4%	943	1,216	-22.4%	58,357	74,021	-21.2%
56 (*)	130	341	-61.9%							2,992	7,506	-60.1%
57	213	392	-45.8%							4,888	8,621	-43.3%
62	1,380	1,714	-19.5%	1,148	1,198	-4.1%	888	820	8.3%	39,882	46,593	-14.4%
71 (*)	319	548	-41.7%	91	157	-42.1%	94	125	-25.3%	8,080	13,311	-39.3%
72 (*)	348	686	-49.3%	170	355	-52.1%	178	296	-39.8%	9,390	17,993	-47.8%
73	834	1,969	-57.7%	468	906	-48.3%	262	451	-41.9%	22,100	49,204	-55.1%
75	657	1,209	-45.6%	299	431	-30.6%	169	250	-32.7%	16,990	29,575	-42.6%
77	3,819	6,865	-44.4%	2,501	3,990	-37.3%	2,243	2,960	-24.2%	106,819	181,784	-41.2%
82 - WESTCHESTER CIRC. (*)	26	49	-47.8%	18	37	-51.0%				664	1,232	-46.1%
87	646	1,447	-55.4%	173	433	-60.1%	154	310	-50.4%	16,156	35,120	-54.0%
88	1,136	1,942	-41.5%	819	1,570	-47.8%	686	1,202	-42.9%	32,157	55,011	-41.5%
93 - BISCAYNE MAX	1,433	3,050	-53.0%							32,949	67,101	-50.9%
95 EXPRESS (*)	287	1,757	-83.6%							6,611	38,657	-82.9%
99	836	1,330	-37.1%	604	859	-29.7%	393	655	-40.1%	23,213	35,966	-35.5%
101 - A (*)	88	154	-42.8%	41	58	-29.3%	49	64	-23.4%	2,392	3,950	-39.4%
102 - B	754	1,516	-50.2%	345	790	-56.3%	395	700	-43.7%	20,302	40,003	-49.2%
103 - C	118	409	-71.2%	106	271	-60.8%	101	185	-45.7%	3,530	11,001	-67.9%
104	211	751	-72.0%	66	444	-85.1%	108	313	-65.5%	5,539	19,853	-72.1%
105 - E	641	1,104	-41.9%	390	600	-34.9%	436	600	-27.3%	18,047	29,681	-39.2%

METROBUS MONTHLY AND AVERAGE DAILY BOARDINGS BY ROUTE

Route	Average Weekday	Average Weekday	Percent Change	Average Saturday	Average Saturday	Percent Change	Average Sunday	Average Sunday	Percent Change	Total Monthly	Total Monthly	Percent Change
	Jul-20	Jul-19	20 vs 19	Jul-20	Jul-19	20 vs 19	Jul-20	Jul-19	20 vs 19	Jul-20	Jul-19	20 vs 19
107 - G	850	1,509	-43.7%	621	967	-35.8%	508	823	-38.2%	24,057	41,170	-41.6%
108 - H	249	449	-44.6%	260	378	-31.3%	243	314	-22.9%	7,728	12,961	-40.4%
110 - J	1,439	2,445	-41.2%	880	1,944	-54.7%	811	1,515	-46.5%	39,850	69,141	-42.4%
112 - L	5,092	7,170	-29.0%	3,425	5,887	-41.8%	3,243	4,430	-26.8%	143,789	203,437	-29.3%
113 - M	317	763	-58.4%	197	445	-55.8%	122	391	-68.9%	8,571	20,524	-58.2%
115 (*)	171	142	20.2%	123	95	29.5%	104	82	27.8%	4,842	3,919	23.6%
119 - S	5,486	8,304	-33.9%	4,131	6,851	-39.7%	4,425	7,014	-36.9%	160,395	245,158	-34.6%
120 - BEACH MAX	3,369	6,028	-44.1%	2,696	4,723	-42.9%	1,753	3,237	-45.8%	95,281	167,689	-43.2%
132 TRI-RAIL (DORAL)	10	6	52.1%							221	139	59.0%
135	486	1,075	-54.8%	209	498	-58.1%	168	371	-54.7%	12,676	27,490	-53.9%
136	47	127	-63.0%							1,083	2,796	-61.3%
137 - WEST DADE CONN.	650	1,500	-56.6%	539	1,072	-49.7%	476	827	-42.5%	19,015	41,415	-54.1%
150 - MIAMI BEACH AIRPORT FLYER (*)	794	1,673	-52.5%	684	1,435	-52.4%	706	1,425	-50.5%	23,827	49,676	-52.0%
155 - BISCAYNE GARDENS CIRCULATOR (*)	32	43	-26.0%							730	943	-22.6%
183	1,844	2,670	-30.9%	1,089	1,769	-38.5%	917	1,330	-31.1%	50,421	72,454	-30.4%
200 - CUTLER BAY LOCAL	90	135	-33.6%	50	134	-62.4%	32	48	-33.8%	2,391	3,745	-36.2%
202 - LITTLE HAITI CONN. (*)	99	137	-27.6%	46	63	-27.3%	48	44	8.9%	2,657	3,487	-23.8%
207 (7st) - LITTLE HAVANA CIRC	621	1,463	-57.5%	388	886	-56.2%	482	667	-27.8%	17,770	39,068	-54.5%
208 (8st) - LITTLE HAVANA CIRC	762	1,381	-44.8%	538	1,009	-46.7%	557	833	-33.1%	21,899	38,577	-43.2%
210 - SKYLAKE CIRC (*)	183	284	-35.5%	92	180	-49.1%	132	154	-14.5%	5,105	7,737	-34.0%
211 - OVERTOWN CIRC. (*)	43	74	-41.2%							997	1,621	-38.5%
212 - SWEETWATER CIRC. (*)	16	43	-62.0%							374	942	-60.3%
217 - BUNCHE PARK CIRC (*)	56	57	-1.4%							1,285	1,246	3.1%
238 EAST/WEST CONN.	183	464	-60.6%							4,207	10,215	-58.8%

METROBUS MONTHLY AND AVERAGE DAILY BOARDINGS BY ROUTE

Route	Average Weekday	Average Weekday	Percent Change	Average Saturday	Average Saturday	Percent Change	Average Sunday	Average Sunday	Percent Change	Total Monthly	Total Monthly	Percent Change
	Jul-20	Jul-19	20 vs 19	Jul-20	Jul-19	20 vs 19	Jul-20	Jul-19	20 vs 19	Jul-20	Jul-19	20 vs 19
246 - NIGHT OWL	10	89	-88.7%	1	72	-99.0%	4	87	-96.0%	249	2,686	-90.7%
248 - PRINCETON CIRCULATOR (*)	73	114	-35.6%							1,684	2,500	-32.6%
252 - CORAL REEF MAX	271	776	-65.0%	149	274	-45.6%	101	224	-55.0%	7,241	19,276	-62.4%
254 - BROWNSVILLE CIRC. (*)	31	15	112.6%							718	323	122.3%
267 - LUDLAM LIMITED (*)	71	123	-41.8%							1,640	2,697	-39.2%
272 SUNSET KAT (*)	199	498	-60.0%							4,585	10,959	-58.2%
277 - 7th AVENUE MAX	322	545	-40.8%							7,410	11,982	-38.2%
286 - NORTH POINTE CIRC. (*)	17	72	-76.7%	20	50	-59.3%				467	1,787	-73.9%
287 - SAGA BAY MAX	77	320	-76.0%							1,768	7,039	-74.9%
297-27th AVENUE ORANGE MAX	601	1,118	-46.2%							13,834	24,599	-43.8%
301 DADE-MONROE EXPRESS (*)	705	822	-14.2%	719	777	-7.5%	669	756	-11.5%	21,763	24,971	-12.8%
302 CARD SOUND EXPRESS (*)	47	79	-40.9%	32	58	-45.2%	38	55	-31.8%	1,348	2,241	-39.8%
338 - WEEKEND EXPRESS				58	213	-72.8%	63	196	-68.0%	483	1,833	-73.6%
344 (*)	45	87	-47.9%							1,037	1,904	-45.5%
12/21 WEEKEND INTERL.				1,825	2,466	-26.0%	1,722	1,984	-13.2%	14,187	19,784	-28.3%
GREEN HILLS SHUTTLE (*)	6	6	-4.2%							23	30	-23.3%
KINGS CREEK SHUTTLE (*)	6	13	-54.5%							29	51	-43.1%
SIERRA LAKES SHUTTLE (*)	33	21	57.2%							167	85	96.5%
ROBERT SHARP SHUTTLE (*)	14	5	203.2%							72	19	278.9%
AHEPA SHUTTLE (*)	19	21	-7.6%							97	84	15.5%
FEDERATION GARDENS SHUTTLE (*)				12	22	-47.0%				35	88	-60.2%
Total (†)	85,101	153,414	-44.5%	55,814	90,865	-38.6%	46,902	71,874	-34.7%	2,366,749	4,094,906	-42.2%

(1) Includes shuttles and those routes which were not run both years.

(2) Nearly every bus route experienced year-over-year losses as a result of the SARS-CoV-2 pandemic; rides were fare-free beginning March 22, 2020.

(*) The following routes are entirely operated under contract: 1, 29, 34, 35, 39, 46, 56, 57, 71, 72, 82, 95, 101-A, 115, 135, 150, 155, 202, 210, 211, 212, 217, 248, 254, 267, 272, 286, 301, 302 and 344, although some supplemental runs may be performed by DTPW. Conversely, a few routes that are nominally run by DTPW may have a few supplemental runs operated by contractors; Dade-Monroe routes 301 and 302 as well as six Lifeline routes are also under contracted operation.

(†) Not shown are several express routes were suspended at the end of March or the beginning of April 2020, due to the SARS-CoV-2 pandemic, while other routes had alignment and schedule modifications made to them, in an ongoing effort to optimize service delivery; the July 2019 totals include those routes.

METROBUS HOLIDAY BOARDINGS BY ROUTE

Independence Day Holiday (observed) July 3, 2020

ROUTES	Independence Day 2019	Independence Day (observed) 2020	Pct Delta	ROUTES	Independence Day 2019	Independence Day (observed) 2020	Pct Delta
1 (*)	240	270	12.5%	88	1,172	1,296	10.6%
2	1,141	1,328	16.4%	99	833	833	0.0%
3	4,689	3,316	-29.3%	101 (*)	148	83	-43.9%
7	1,578	1,620	2.7%	102	801	736	-8.1%
8	1,876	2,533	35.0%	103	202	99	-51.0%
9	2,297	3,977	73.1%	104	376	291	-22.6%
10	1,371	807	-41.1%	105	582	738	26.8%
11	3,965	4,160	4.9%	107	974	750	-23.0%
12	1,238	1,539	24.3%	108	360	198	-45.0%
16	1,053	858	-18.5%	110	1,563	1,637	4.7%
17	1,734	2,510	44.8%	112	4,653	5,572	19.8%
21	958	1,303	36.0%	113	364	599	64.6%
22	1,682	1,560	-7.3%	115 (*)	128	160	25.0%
24	883	927	5.0%	119	7,569	5,052	-33.3%
27	3,212	2,867	-10.7%	120	3,638	2,884	-20.7%
31	719	521	-27.5%	135 (*)	440	424	-3.6%
32	747	841	12.6%	137	893	707	-20.8%
33	667	540	-19.0%	150 (*)	1,547	817	-47.2%
35 (*)	1,414	1,403	-0.8%	183	1,362	1,967	44.4%
36	1,095	1,427	30.3%	200	57	125	119.3%
37	1,877	1,757	-6.4%	202 (*)	38	57	50.0%
38	3,934	4,145	5.4%	207	875	941	7.5%
40	492	901	83.1%	208	964	651	-32.5%
42	427	421	-1.4%	210 (*)	192	146	-24.0%
52	496	814	64.1%	252	278	318	14.4%
54	1,406	2,414	71.7%	301 (*)	732	712	-2.7%
62	1,014	1,667	64.4%	302 (*)	64	55	-14.1%
71 (*)	99	334	237.4%				
72 (*)	316	311	-1.6%				
73	553	747	35.1%				
75	278	678	143.9%				
77	3,082	3,280	6.4%				
87	330	649	96.7%	Total (1)	77,668	80,273	3.4%

(*) Routes currently under contracted operation

(1) Excludes lifeline shuttles and those routes which were not run both years

BUS RIDERSHIP BY ROUTE SERVICE TYPE

Boardings by Service Type (*) and Route	Average Weekday Jul-20	Average Weekday Jul-19	Percent Change 20 vs 19	Average Saturday Jul-20	Average Saturday Jul-19	Percent Change 20 vs 19	Average Sunday Jul-20	Average Sunday Jul-19	Percent Change 20 vs 19	Total Monthly Jul-20	Total Monthly Jul-19	Percent Change 20 vs 19
Express Routes												
34 EXPRESS (*)	584	1,758	-66.8%							13,430	38,665	-65.3%
39 EXPRESS (*)	99	826	-88.0%							2,280	18,167	-87.4%
95-EXPRESS (*)	287	1,757	-83.6%							6,611	38,657	-82.9%
150-MIAMI BEACH AIRPORT FLYER (*)	794	1,673	-52.5%	684	1,435	-52.4%	706	1,425	-50.5%	23,827	49,676	-52.0%
175 - NW MIAMI-DADE EXPRESS												
195 EXPRESS - BROWARD BLVD		405									8,903	-100.0%
196 EXPRESS - SHERIDAN ST		371									8,154	-100.0%
295 EXPRESS - BROWARD BLVD - CIVIC CENTER		249									5,484	-100.0%
296 EXPRESS - SHERIDAN ST - CIVIC CENTER		236									5,188	-100.0%
204 KAT-KILLIAN		974									21,436	-100.0%
288 KENDALL CRUISER		741									16,307	-100.0%
338 - WEEKEND EXPRESS				58	213	-72.8%	63	196	-68.0%	483	1,833	-73.6%
836 EXPRESS												
Subtotal Express Routes	1,765	8,990	-80.4%	742	1,649	-55.0%	768	1,621	-52.6%	46,631	212,470	-78.1%
Percentage of All Bus Routes	2.1%	5.9%		1.3%	1.8%		1.6%	2.3%		2.0%	5.2%	
Contracted Regular & Circulator Routes												
1	151	306	-50.6%	166	182	-8.9%	137	202	-32.0%	4,688	8,462	-44.6%
29	229	591	-61.3%							5,261	13,001	-59.5%
35	1,349	2,199	-38.6%	806	1,145	-29.6%	662	926	-28.5%	36,911	57,583	-35.9%
46 - LIBERTY CITY CONN.	14	23	-42.3%							311	516	-39.7%
56	130	341	-61.9%							2,992	7,506	-60.1%
57	213	392	-45.8%							4,888	8,621	-43.3%
71	319	548	-41.7%	91	157	-42.1%	94	125	-25.3%	8,080	13,311	-39.3%
72	348	686	-49.3%	170	355	-52.1%	178	296	-39.8%	9,390	17,993	-47.8%
82 - WESTCHESTER CIRC	26	49	-47.8%	18	37					664	1,232	-46.1%
101 - A	88	154	-42.8%	41	58	-29.3%	49	64	-23.4%	2,392	3,950	-39.4%
115	171	142	20.2%	123	95	29.5%	104	82	27.8%	4,842	3,919	23.6%
135	486	1,075	-54.8%	209	498	-58.1%	168	371	-54.7%	12,676	27,490	-53.9%
155 - BISCAYNE GARDENS CIRC	32	43	-26.0%							730	943	-22.6%
202 - LITTLE HAITI CONN.	99	137	-27.6%	46	63	-27.3%	48	44	8.9%	2,657	3,487	-23.8%
210 - SKYLAKE CIRC	183	284	-35.5%	92	180	-49.1%	132	154	-14.5%	5,105	7,737	-34.0%
211-OVERTOWN CIRC	43	74	-41.2%							997	1,621	-38.5%
212-SWEETWATER CIRC	16	43	-62.0%							374	942	-60.3%
217 - BUNCHE PARK CIRC	56	57	-1.4%							1,285	1,246	3.1%
248 - PRINCETON CIRCULATOR	73	114	-35.6%							1,684	2,500	-32.6%
254-BROWNSVILLE CIRC	31	15	112.6%							718	323	122.3%
267-LUDLAM LIMITED	71	123	-41.8%							1,640	2,697	-39.2%
272 KAT-SUNSET	199	498	-60.0%							4,585	10,959	-58.2%
286-NORTH POINTE CIRC	17	72	-76.7%	20	50	-59.3%				467	1,787	-73.9%
344	45	87	-47.9%							1,037	1,904	-45.5%
Subtotal Contracted Reg. & Circ. Routes	4,390	8,052	-45.5%	1,781	2,819	-36.8%	1,572	2,263	-30.6%	114,374	199,730	-42.7%
Percentage of All Bus Routes	5.2%	5.2%		3.2%	3.1%		3.4%	3.1%		4.8%	4.9%	

BUS RIDERSHIP BY ROUTE SERVICE TYPE

Boardings by Service Type and Route	Average Weekday	Average Weekday	Percent Change	Average Saturday	Average Saturday	Percent Change	Average Sunday	Average Sunday	Percent Change	Total Monthly	Total Monthly	Percent Change
	Jul-20	Jul-19	20 vs 19	Jul-20	Jul-19	20 vs 19	Jul-20	Jul-19	20 vs 19	Jul-20	Jul-19	20 vs 19
Contracted Express Routes												
301-DADE MONROE EXPRESS	705	822	-14.2%	719	777	-7.5%	669	756	-11.5%	21,763	24,971	-12.8%
302-CARD SOUND EXPRESS	47	79	-40.9%	32	58	-45.2%	38	55	-31.8%	1,348	2,241	-39.8%
Subtotal Contracted Express Routes	751	901	-16.6%	750	835	-10.1%	707	811	-12.9%	23,111	27,212	-15.1%
Percentage of All Bus Routes	0.9%	0.6%		1.3%	0.9%		1.5%	1.1%		1.0%	0.7%	
Limited Stop Routes												
51-FLAGLER MAX	1,403	2,866	-51.1%							32,268	63,055	-48.8%
93 - BISCAYNE MAX	1,433	3,050	-53.0%							32,949	67,101	-50.9%
120 - BEACH MAX	3,369	6,028	-44.1%	2,696	4,723	-42.9%	1,753	3,237	-45.8%	95,281	167,689	-43.2%
252-CORAL REEF MAX	271	776	-65.0%	149	274	-45.6%	101	224	-55.0%	7,241	19,276	-62.4%
277-7TH AVENUE MAX	322	545	-40.8%							7,410	11,982	-38.2%
287-SAGA BAY MAX	77	320	-76.0%							1,768	7,039	-74.9%
297-27th AVENUE ORANGE MAX	601	1,118	-46.2%							13,834	24,599	-43.8%
Subtotal Limited Stop (MAX) Routes	7,476	14,702	-49.1%	2,845	4,997	-43.1%	1,854	3,461	-46.4%	190,751	360,741	-47.1%
Percentage of All Bus Routes	8.8%	9.6%		5.1%	5.5%		4.0%	4.8%		8.1%	8.8%	
Free Route												
132 - TRI-RAIL DORAL	10	6	52.1%							221	139	59.0%
Percentage of All Bus Routes	0.0%	0.0%								0.0%	0.0%	
Shuttles												
55-MARLINS SHUTTLE		64			91			165			728	
Percentage of All Bus Routes		0.0%			0.1%			0.2%			0.0%	
Contractor-Operated Lifeline Routes												
GREEN HILLS SHUTTLE	6	6	-4.2%							23	30	-23.3%
KINGS CREEK SHUTTLE	6	13	-54.5%							29	51	-43.1%
SIERRA LAKES SHUTTLE	33	21	57.2%							167	85	96.5%
ROBERT SHARP SHUTTLE	14	5	203.2%							72	19	278.9%
AHEPA SHUTTLE	19	21	-7.6%							97	84	15.5%
FEDERATION GARDENS SHUTTLE				12	22	-47.0%				35	88	-60.2%
Subtotal Contractor-Operated Lifeline Routes	79	66	19.8%	12	22	-47.0%				423	357	18.5%
Percentage of All Bus Routes	0.1%	0.0%		0.0%	0.0%					0.0%	0.0%	
Other Circulator Route												
200-CUTLER BAY LOCAL	90	135	-33.6%	50	134	-62.4%	32	48		2,391	3,745	-36.2%
Percentage of All Bus Routes	0.1%	0.1%		0.1%	0.1%		0.1%	0.1%		0.1%	0.1%	
All Other (Regular) Routes	70,540	120,499	-41.5%	49,635	80,319	-38.2%	41,970	63,506	-33.9%	1,988,847	3,289,784	-39.5%
Percentage of All Bus Routes	82.9%	78.5%		88.9%	88.4%		89.5%	88.4%		84.0%	80.3%	
Total Bus System (1)	85,101	153,414	-44.5%	55,814	90,865	-38.6%	46,902	71,874	-34.7%	2,366,749	4,094,906	-42.2%

(1) Includes shuttles and those routes which were not run both years; averages rounded to the nearest boarding..

(*) The following routes are entirely operated under contract: 1, 29, 34, 35, 39, 46, 56, 57, 71, 72, 82, 95, 101-A, 115, 135, 150, 155, 202, 210, 211, 212, 217, 248, 254, 267, 272, 286, 301, 302 and 344, although some supplemental runs may be performed by DTPW. Conversely, a few routes that are nominally run by DTPW may have a few supplemental runs operated by contractors; Dade-Monroe routes 301 and 302 as well as six Lifeline routes are also under contracted operation.

Several express routes were suspended at the end of March or the beginning of April 2020, due to the SARS-CoV-2 pandemic, while other routes had alignment and schedule modifications made to them, in an ongoing effort to optimize service delivery.

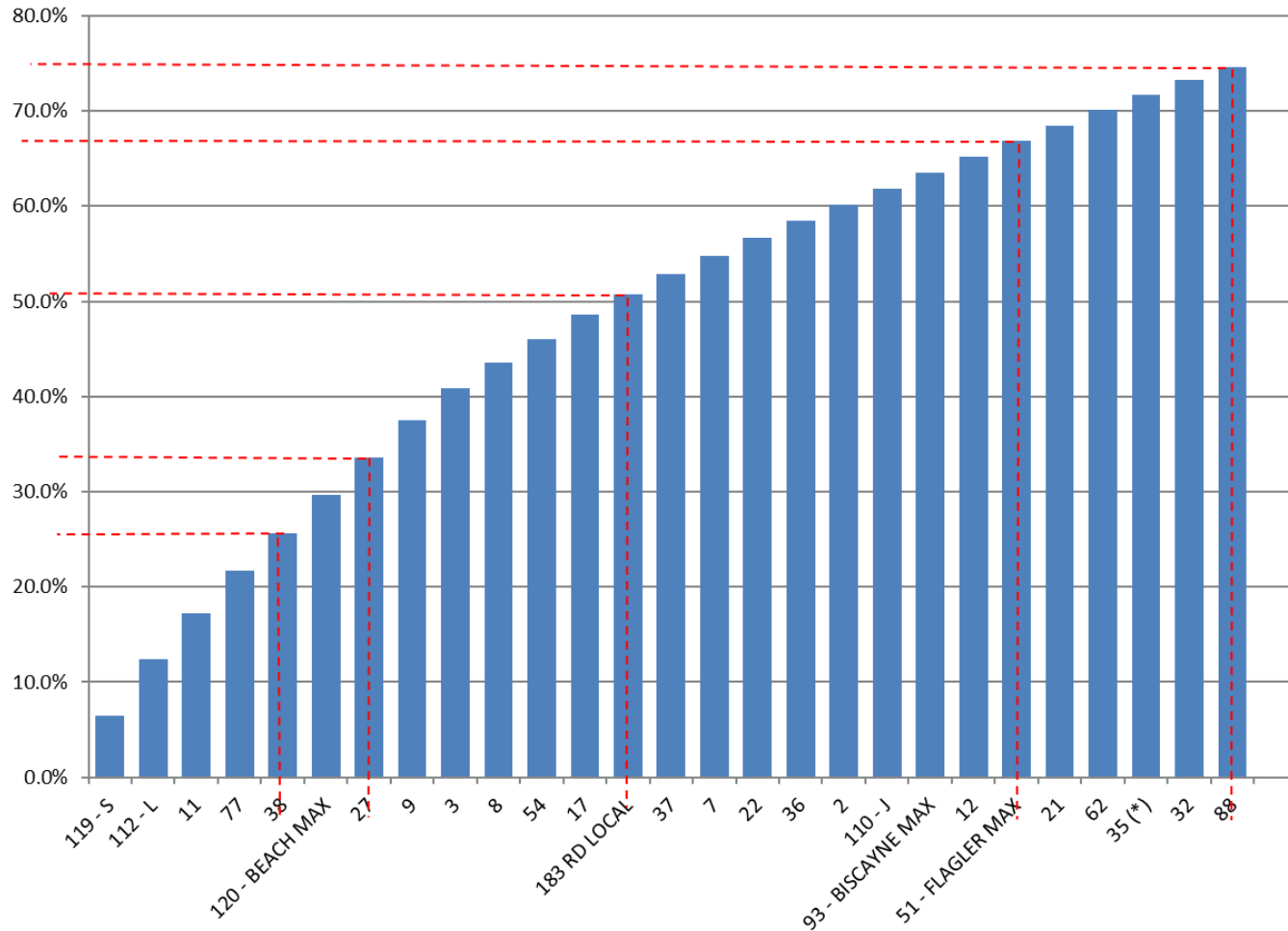
Bus Routes as Ranked by Percentage of Average Weekday Ridership

Rank	Route	Average Weekday	Percent Share	Cumul Pct Share	Rank	Route	Average Weekday	Percent Share	Cumul Pct Share	Rank	Route	Average Weekday	Percent Share	Cumul Pct Share
1	119	5,486	6.4%	6.4%	36	208	762	0.9%	83.5%	71	200	90	0.1%	99.1%
2	112	5,092	6.0%	12.4%	37	102	754	0.9%	84.3%	72	101	88	0.1%	99.2%
3	11	4,055	4.8%	17.2%	38	301	705	0.8%	85.2%	73	287	77	0.1%	99.3%
4	77	3,819	4.5%	21.7%	39	75	657	0.8%	85.9%	74	248	73	0.1%	99.4%
5	38	3,397	4.0%	25.7%	40	137	650	0.8%	86.7%	75	267	71	0.1%	99.4%
6	120	3,369	4.0%	29.6%	41	87	646	0.8%	87.5%	76	217	56	0.1%	99.5%
7	27	3,350	3.9%	33.6%	42	105	641	0.8%	88.2%	77	136	47	0.1%	99.6%
8	9	3,324	3.9%	37.5%	43	19	634	0.7%	89.0%	78	302	47	0.1%	99.6%
9	3	2,894	3.4%	40.9%	44	207	621	0.7%	89.7%	79	344	45	0.1%	99.7%
10	8	2,284	2.7%	43.6%	45	297	601	0.7%	90.4%	80	211	43	0.1%	99.7%
11	54	2,142	2.5%	46.1%	46	52	601	0.7%	91.1%	81	SL	33	0.0%	99.8%
12	17	2,118	2.5%	48.6%	47	34	584	0.7%	91.8%	82	155	32	0.0%	99.8%
13	183	1,844	2.2%	50.7%	48	33	576	0.7%	92.5%	83	254	31	0.0%	99.8%
14	37	1,771	2.1%	52.8%	49	31	488	0.6%	93.0%	84	82	26	0.0%	99.9%
15	7	1,654	1.9%	54.8%	50	135	486	0.6%	93.6%	85	AS	19	0.0%	99.9%
16	22	1,633	1.9%	56.7%	51	42	466	0.5%	94.2%	86	286	17	0.0%	99.9%
17	36	1,504	1.8%	58.4%	52	72	348	0.4%	94.6%	87	212	16	0.0%	99.9%
18	2	1,458	1.7%	60.2%	53	277	322	0.4%	94.9%	88	RS	14	0.0%	99.9%
19	110	1,439	1.7%	61.8%	54	71	319	0.4%	95.3%	89	46	14	0.0%	100.0%
20	93	1,433	1.7%	63.5%	55	113	317	0.4%	95.7%	90	246	10	0.0%	100.0%
21	12	1,423	1.7%	65.2%	56	95	287	0.3%	96.0%	91	132	10	0.0%	100.0%
22	51	1,403	1.6%	66.9%	57	252	271	0.3%	96.4%	92	KC	6	0.0%	100.0%
23	21	1,393	1.6%	68.5%	58	108	249	0.3%	96.6%	93	GH	6	0.0%	100.0%
24	62	1,380	1.6%	70.1%	59	29	229	0.3%	96.9%	94	500	0	0.0%	100.0%
25	35	1,349	1.6%	71.7%	60	57	213	0.2%	97.2%					
26	32	1,348	1.6%	73.3%	61	104	211	0.2%	97.4%					
27	88	1,136	1.3%	74.6%	62	272	199	0.2%	97.6%					
28	24	977	1.1%	75.8%	63	210	183	0.2%	97.9%					
29	40	863	1.0%	76.8%	64	238	183	0.2%	98.1%					
30	107	850	1.0%	77.8%	65	115	171	0.2%	98.3%					
31	99	836	1.0%	78.8%	66	1	151	0.2%	98.5%					
32	73	834	1.0%	79.7%	67	56	130	0.2%	98.6%					
33	16	816	1.0%	80.7%	68	103	118	0.1%	98.7%					
34	150	794	0.9%	81.6%	69	202	99	0.1%	98.9%					
35	10	792	0.9%	82.6%	70	39	99	0.1%	99.0%					
Total Boardings		85,101	100.0%	contracted										

(1) Average weekday ridership rounded to the nearest unit.

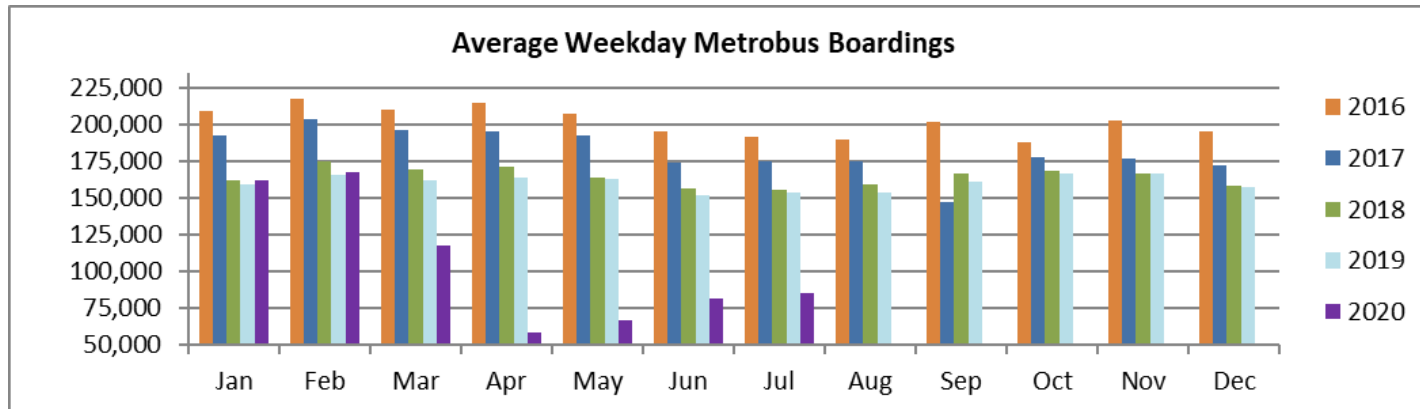
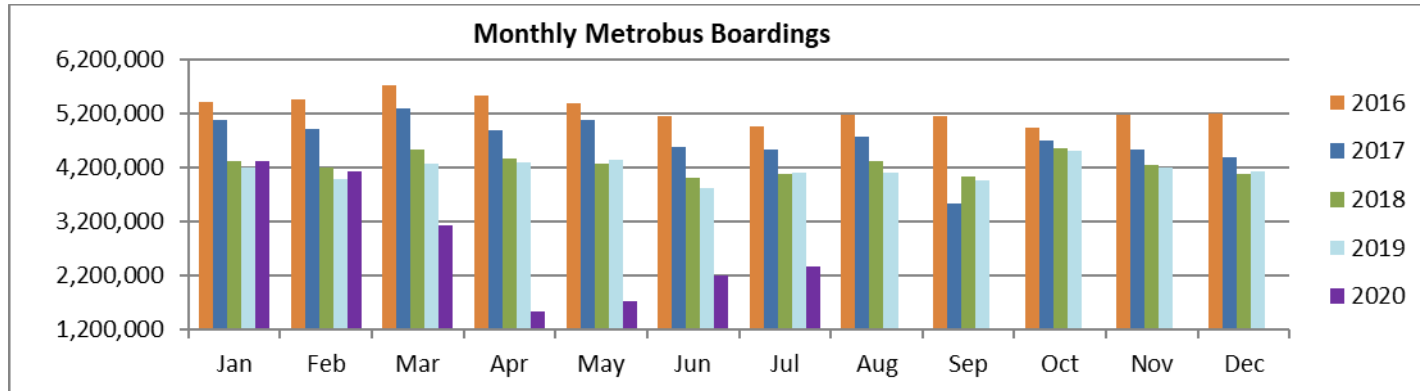
(2) Includes the five Lifeline Shuttles that operate on weekdays: Ahepa, Green Hills, Kings Creek, Robert Sharp and Sierra Lakes.

**Bus - Cumulative Percentage Average Weekday Ridership Share
Top 1/4, 1/3, 1/2, 2/3 and 3/4 of Routes**



(*) Route entirely run by contractor

TOTAL MONTHLY AND AVERAGE WEEKDAY RIDERSHIP YEAR OVER YEAR COMPARISON CHARTS – METROBUS



**“TOP 5 / BOTTOM 5” BUS ROUTES AVERAGE WEEKDAY RIDERSHIP PERFORMANCE
YEAR OVER YEAR COMPARISONS**

Route	Jul-20	Jul-19	Absolute Delta (1)	Percent Delta (2)
115 (*)	171	142	29	20.2%
254 - BROWNSVILLE CIRC. (*)	31	15	17	112.6%
132 TRI-RAIL (DORAL)	10	6	3	52.1%
217 - BUNCHE PARK CIRC (*)	56	57	-1	-1.4%
46 - LIBERTY CITY CONN. (*)	14	23	-10	-42.3%

77	3,819	6,865	-3,045	-44.4%
27	3,350	6,265	-2,914	-46.5%
119 - S	5,486	8,304	-2,818	-33.9%
11	4,055	6,758	-2,703	-40.0%
120 - BEACH MAX	3,369	6,028	-2,659	-44.1%

(*) Route entirely run by contractor.

(1) Averages rounded to the nearest boarding; Lifelines excluded.

(2) As a result of the SARS-CoV-2 pandemic, only three routes had actual gains in July 2020 compared with July 2019; rides were fare-free beginning March 22, 2020.

METROBUS PARKING PATRONAGE SUMMARY

July 2020

PARK-RIDE LOT	ACTUAL AVAILABLE SPACES	ACTUAL OCCUPANCY	PERCENT OCCUPANCY
Transitway / SW 152nd St	200	31	16%
Transitway / SW 168th St	149	29	19%
Transitway / SW 200th Street (effective February 2020)	100	35	35%
Transitway / SW 112 Ave (Target)	450	43	10%
Transitway / SW 244th St	95	10	11%
Transitway / SW 296th St	139	26	19%
Transitway / SW 344th St	248	93	38%
Coral Reef Drive 117/ Turnpike	95	36	38%
Golden Glades - East Lot	535	109	20%
Golden Glades - West Lot	1,007	116	12%
Hammocks Town Center (SW 152 Ave / SW 104 St)	50	0	0%
Kendall Dr./SW 127th Ave	161	4	2%
West Kendall Transit Term (Kendall Dr / SW162 Ave)	40	1	3%
NW 7th Avenue Transit Village (NW 7 Ave / NW 62 St)	25	25	100%
Miami Gardens Dr. / NW 73rd Ave	136	10	7%
Dolphin Station (effective Mar 2020)	348	2	1%
I-75 / Miami Gardens Dr (effective June 2019)	298	0	0%
TOTAL	4,076	570	14%

(*) Note: Inaccuracies due to ongoing construction as of March 1, 2019

Note: some park-ride lots are joint-use and the number of park-ride vehicles may exceed the number of spaces allocated.

Metrorail



July 2020

METRORAIL MONTHLY AND AVERAGE DAILY BOARDINGS BY STATION

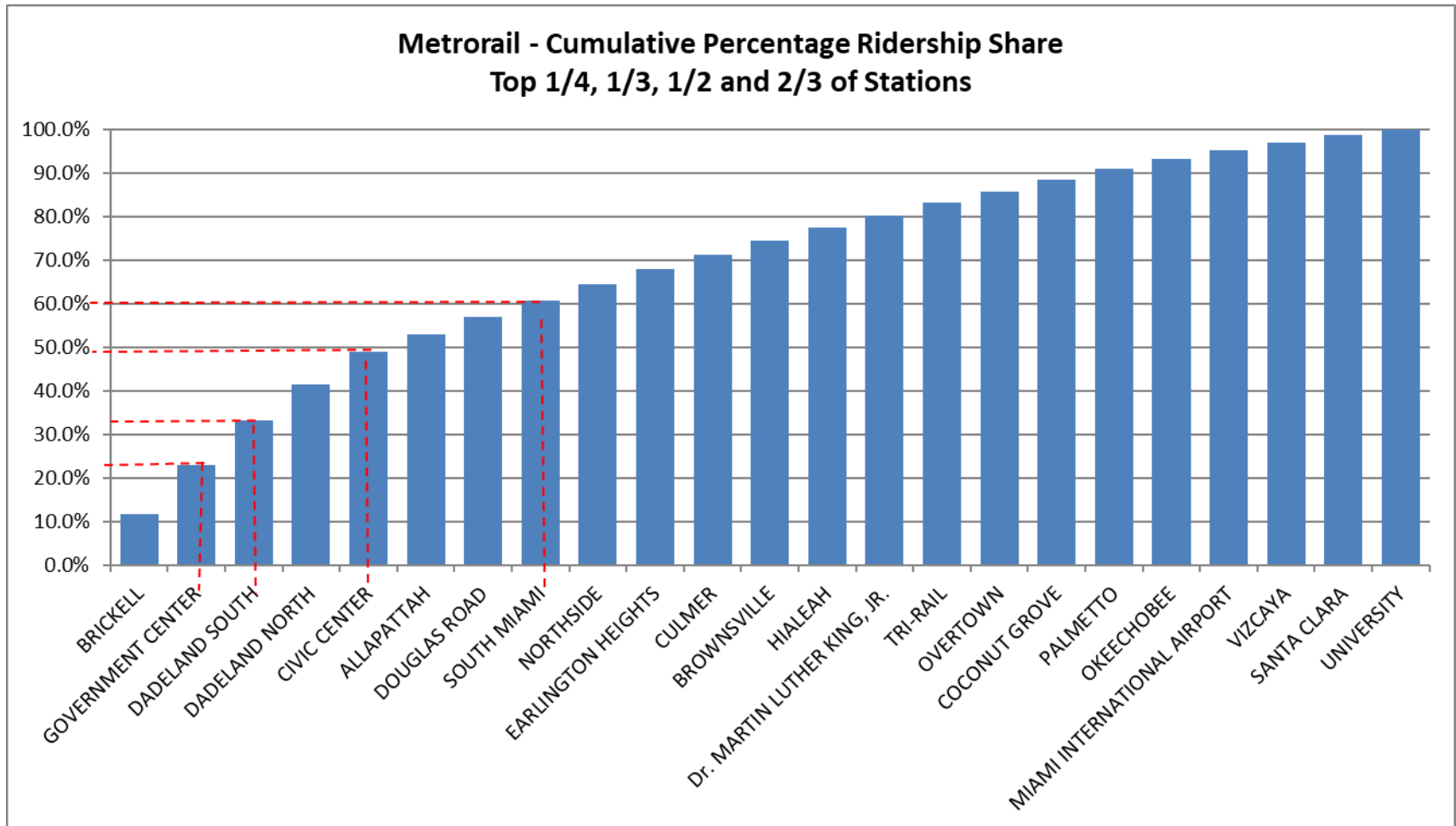
	Average Weekday	Average Weekday	Percent Change	Average Saturday	Average Saturday	Percent Change	Average Sunday	Average Sunday	Percent Change	Total Monthly	Total Monthly	Percent Change
STATIONS	Jul-20	Jul-19	20 vs 19	Jul-20	Jul-19	20 vs 19	Jul-20	Jul-19	20 vs 19	Jul-20	Jul-19	20 vs 19
ALLAPATTAH	924	1,640	-43.7%	571	891	-36.0%	423	649	-34.8%	25,080	43,221	-42.0%
BRICKELL	2,743	5,584	-50.9%	1,630	2,356	-30.8%	1,427	1,768	-19.3%	75,141	141,584	-46.9%
BROWNSVILLE	733	752	-2.6%	524	463	13.2%	399	369	8.2%	20,484	20,345	0.7%
CIVIC CENTER	1,769	5,490	-67.8%	492	846	-41.9%	428	707	-39.5%	43,468	127,879	-66.0%
COCONUT GROVE	619	1,423	-56.5%	365	706	-48.4%	351	545	-35.5%	17,000	37,039	-54.1%
CULMER	795	1,081	-26.5%	516	628	-17.9%	427	502	-15.0%	21,941	28,883	-24.0%
DADELAND NORTH	1,960	5,082	-61.4%	983	1,576	-37.7%	743	1,194	-37.8%	51,481	124,774	-58.7%
DADELAND SOUTH	2,385	6,168	-61.3%	1,422	2,159	-34.1%	1,225	1,685	-27.3%	64,951	153,423	-57.7%
DOUGLAS ROAD	912	2,922	-68.8%	562	1,083	-48.2%	416	837	-50.4%	24,736	72,989	-66.1%
DR. MARTIN LUTHER KING, JR.	671	1,023	-34.4%	462	561	-17.7%	384	416	-7.7%	18,835	26,999	-30.2%
EARLINGTON HEIGHTS	805	1,398	-42.4%	533	924	-42.3%	443	685	-35.4%	22,246	38,058	-41.5%
GOVERNMENT CENTER	2,652	8,623	-69.2%	1,475	3,149	-53.2%	1,296	2,477	-47.7%	71,380	216,152	-67.0%
HIALEAH	709	1,148	-38.3%	356	523	-32.0%	292	411	-28.9%	18,749	29,597	-36.7%
MIAMI INTERNATIONAL AIRPORT	480	1,497	-68.0%	391	827	-52.7%	433	969	-55.3%	14,283	41,412	-65.5%
NORTHSIDE	875	1,275	-31.4%	624	769	-18.8%	501	594	-15.6%	24,521	34,222	-28.3%
OKEECHOBEE	480	1,071	-55.1%	243	356	-31.7%	171	248	-31.0%	12,578	26,369	-52.3%
OVERTOWN / ARENA	634	2,019	-68.6%	377	549	-31.3%	346	386	-10.4%	17,317	48,634	-64.4%
PALMETTO	612	1,332	-54.0%	274	349	-21.4%	196	228	-13.9%	15,774	32,008	-50.7%
SANTA CLARA	419	665	-37.0%	248	349	-29.0%	165	221	-25.4%	11,214	17,232	-34.9%
SOUTH MIAMI	902	2,532	-64.4%	495	1,052	-53.0%	418	760	-45.0%	24,195	64,028	-62.2%
TRI-RAIL	662	1,054	-37.1%	362	496	-27.1%	324	398	-18.5%	17,868	27,130	-34.1%
UNIVERSITY	311	1,673	-81.4%	141	395	-64.3%	113	263	-57.0%	8,076	39,789	-79.7%
VIZCAYA	425	1,070	-60.3%	262	482	-45.7%	218	352	-38.1%	11,645	27,391	-57.5%
TOTAL	23,478	56,520	-58.5%	13,304	21,486	-38.1%	11,140	16,664	-33.1%	632,964	1,419,158	-55.4%

(†) All Metrorail stations reported net losses in average weekday ridership in July 2020, due to effects from the SARS-CoV-2 pandemic; rides were fare-free beginning March 22, 2020.

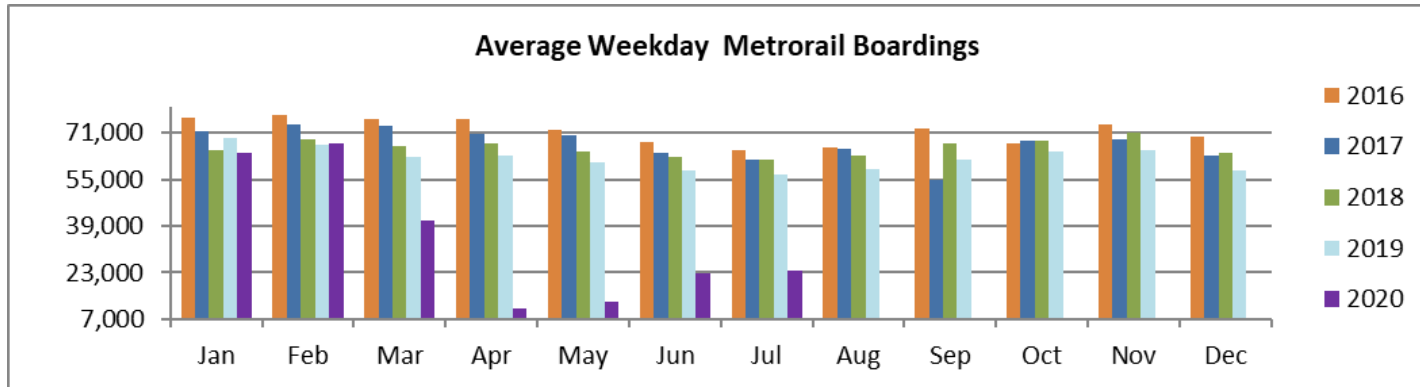
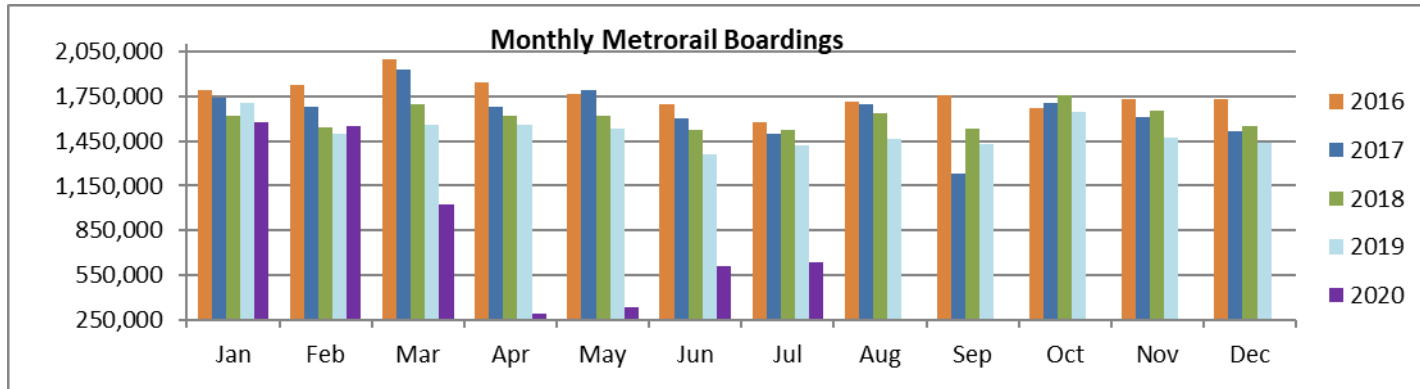
METRORAIL HOLIDAY BOARDINGS BY STATION

	Independence Day	Independence Day (observed)	Percent Change
STATIONS	2019	2020	20 vs 19
ALLAPATTAH	982	781	-20.5%
BRICKELL	2,248	2,576	14.6%
BROWNSVILLE	471	675	43.3%
CIVIC CENTER	895	861	-3.8%
COCONUT GROVE	737	524	-28.9%
CULMER	573	680	18.7%
DADELAND NORTH	1,892	1,453	-23.2%
DADELAND SOUTH	2,344	1,883	-19.7%
DOUGLAS ROAD	1,024	755	-26.3%
DR. MARTIN LUTHER KING, JR.	586	693	18.3%
EARLINGTON HEIGHTS	874	642	-26.5%
GOVERNMENT CENTER	3,945	1,952	-50.5%
HIALEAH	601	567	-5.7%
MIAMI INTERNATIONAL AIRPORT	1,306	436	-66.6%
NORTHSIDE	724	769	6.2%
OKEECHOBEE	402	353	-12.2%
OVERTOWN / ARENA	478	473	-1.0%
PALMETTO	388	420	8.2%
SANTA CLARA	327	345	5.5%
SOUTH MIAMI	1,072	694	-35.3%
TRI-RAIL	378	554	46.6%
UNIVERSITY	354	222	-37.3%
VIZCAYA	509	373	-26.7%
TOTAL	23,110	18,681	-19.2%

METRORAIL CUMULATIVE PERCENTAGE RIDERSHIP SHARE



TOTAL MONTHLY AND AVERAGE WEEKDAY RIDERSHIP YEAR OVER YEAR COMPARISON CHARTS – METRORAIL



**“TOP 5 / BOTTOM 5” RAIL STATIONS AVERAGE WEEKDAY RIDERSHIP PERFORMANCE
YEAR OVER YEAR COMPARISONS**

Station	Jul-20	Jul-19	Absolute Delta (1)	Percent Delta
BROWNSVILLE	733	752	-20	-2.6%
SANTA CLARA	419	665	-246	-37.0%
CULMER	795	1,081	-286	-26.5%
Dr. MARTIN LUTHER KING, JR.	671	1,023	-352	-34.4%
TRI-RAIL	662	1,054	-391	-37.1%
GOVERNMENT CENTER	2,652	8,623	-5,971	-69.2%
DADELAND SOUTH	2,385	6,168	-3,783	-61.3%
CIVIC CENTER	1,769	5,490	-3,720	-67.8%
DADELAND NORTH	1,960	5,082	-3,122	-61.4%
BRICKELL	2,743	5,584	-2,841	-50.9%

(1) Averages rounded to the nearest boarding.

(†) All Metrorail stations reported net losses in July 2020, due to effects on ridership from the SARS-CoV-2 pandemic.

METRORAIL PARKING PATRONAGE SUMMARY

July 2020

PARK-RIDE LOT	ACTUAL CAPACITY (1)	ACTUAL OCCUPANCY (2)	PERCENT OCCUPANCY
DADELAND SOUTH	1,280		
DADELAND NORTH	1,963		
SOUTH MIAMI	1,081		
UNIVERSITY	260		
DOUGLAS ROAD	150		
COCONUT GROVE	100		
VIZCAYA	120		
CULMER	40		
SANTA CLARA	61		
ALLAPATTAH	74		
EARLINGTON HEIGHTS	361		
BROWNSVILLE	100		
DR. MARTIN LUTHER KING JR. (MDT)	62		
DR. MARTIN LUTHER KING JR. (GARAGE)	631		
NORTHSIDE	197		
HIALEAH	338		
OKEECHOBEE	1,398		
PALMETTO	700		
TOTAL	8,916		

(1) Number of spaces could vary each week; shown are available spaces during final week of month.

(2) Averages rounded to nearest unit; no counts effected in July 2020 due to reassignment of staff as result of SARS-CoV-2 pandemic.

Metromover



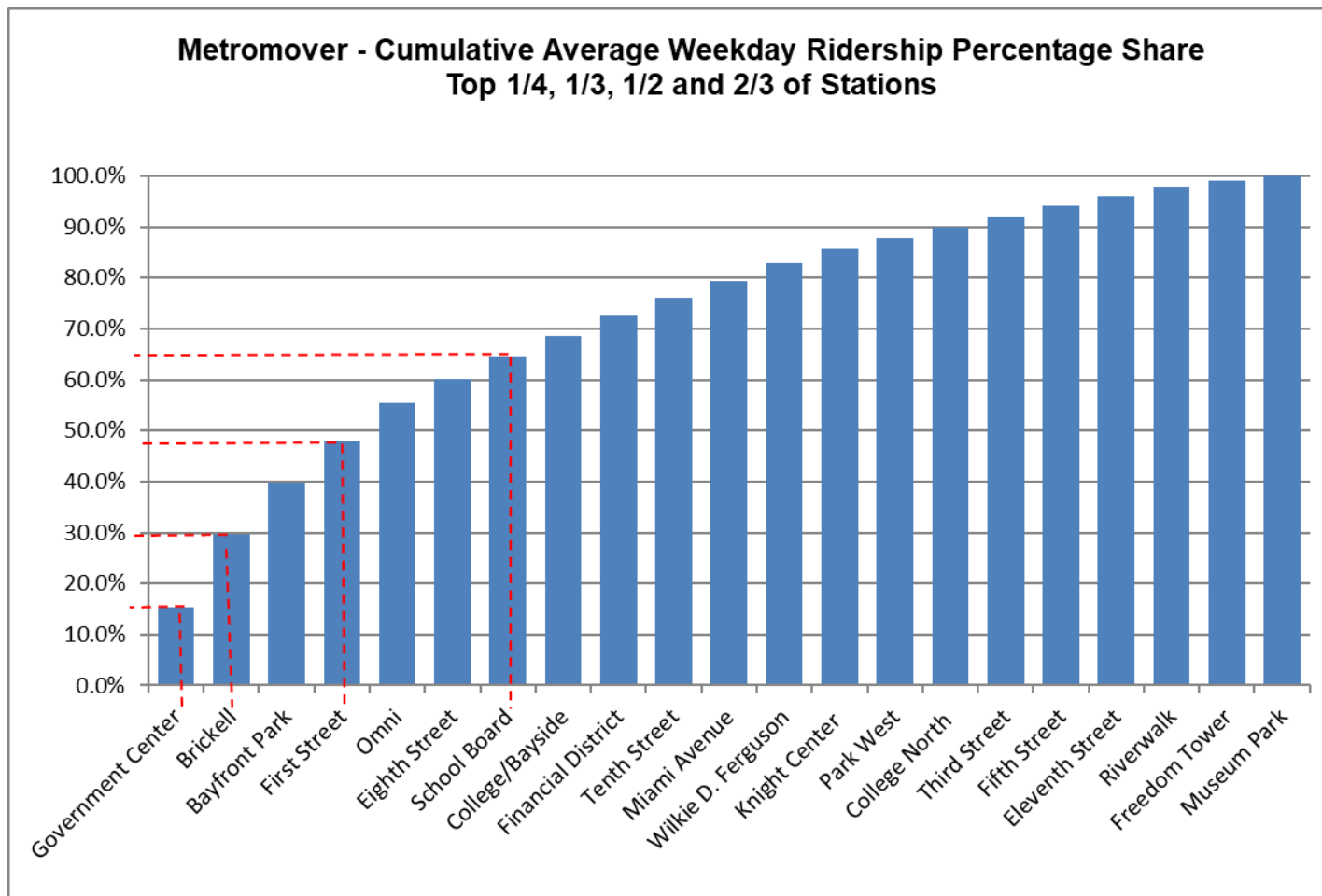
July 2020

METROMOVER MONTHLY AND AVERAGE DAILY BOARDINGS BY STATION

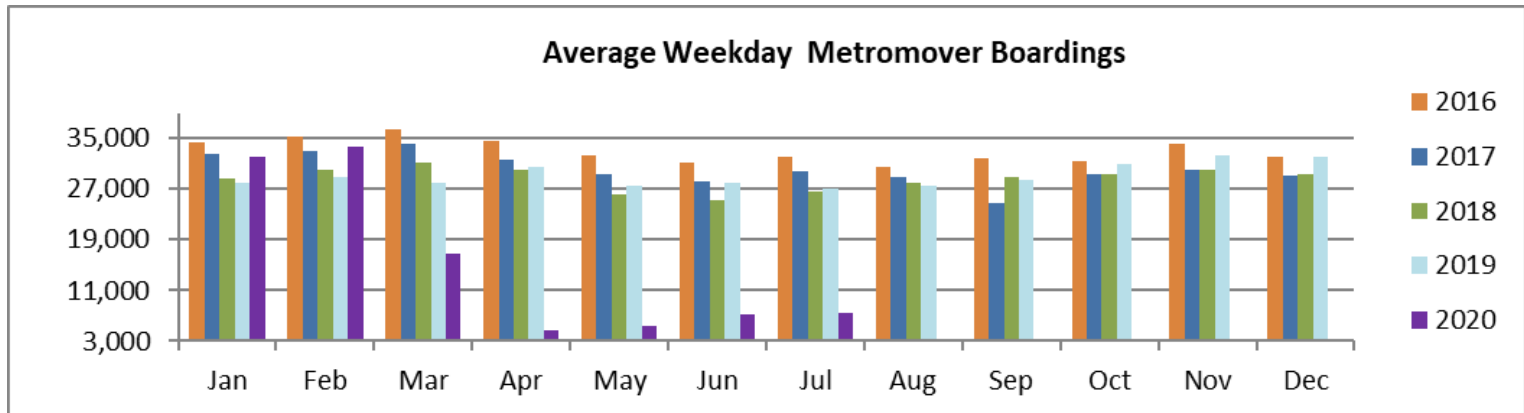
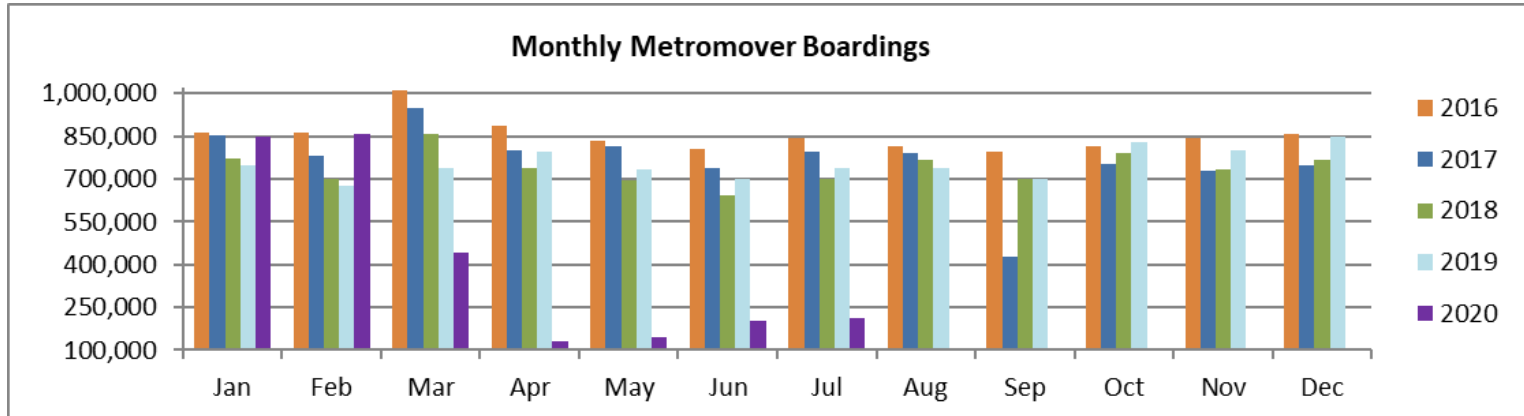
	Average Weekday	Average Weekday	Percent Change	Average Saturday	Average Saturday	Percent Change	Average Sunday	Average Sunday	Percent Change	Independence Day Holiday	Independence Day Holiday	Percent Change	Total Monthly	Total Monthly	Percent Change
STATIONS	Jul-20	Jul-19	20 vs 19	Jul-20	Jul-19	20 vs 19	Jul-20	Jul-19	20 vs 19	Jul-20	Jul-19	20 vs 19	Jul-20	Jul-19	20 vs 19
School Board	331	775	-57.3%	261	600	-56.5%	259	529	-51.0%	377	870	-56.7%	9,745	22,442	-56.6%
Omni	551	1,542	-64.3%	497	1,133	-56.2%	430	904	-52.4%	459	965	-52.4%	16,288	43,036	-62.2%
Museum Park	61	225	-72.9%	65	414	-84.3%	85	309	-72.4%	131	569	-77.0%	2,070	8,401	-75.4%
Eleventh Street	141	243	-41.8%	78	218	-64.0%	67	191	-65.0%	87	375	-76.8%	3,777	7,353	-48.6%
Park West	158	302	-47.7%	89	268	-66.9%	114	175	-34.8%	108	225	-52.0%	4,390	8,633	-49.1%
Freedom Tower	94	334	-71.8%	68	363	-81.3%	44	291	-84.9%	71	366	-80.6%	2,595	10,335	-74.9%
Government Center (1)	1,121	6,268	-82.1%	883	2,096	-57.9%	764	1,644	-53.5%				31,250	152,846	-79.6%
Miami Avenue	248	432	-42.5%	173	302	-42.8%	183	259	-29.6%	227			7,106	11,742	-39.5%
Third Street	154	344	-55.3%	114	229	-50.4%	109	185	-41.0%	90	350	-74.3%	4,359	9,569	-54.4%
Knight Center	217	997	-78.2%	176	421	-58.2%	131	393	-66.7%	228	546	-58.2%	6,233	25,732	-75.8%
Bayfront Park	744	3,009	-75.3%	586	2,058	-71.5%	516	1,894	-72.8%	677	5,182	-86.9%	21,456	87,185	-75.4%
First Street	595	1,611	-63.1%	456	1,160	-60.7%	423	974	-56.5%	620	1,449	-57.2%	17,232	45,423	-62.1%
College/Bayside	292	1,795	-83.7%	174	1,514	-88.5%	164	1,312	-87.5%	426	2,829	-84.9%	8,202	53,629	-84.7%
College North	154	822	-81.3%	97	335	-71.1%	72	211	-66.0%	83	335	-75.2%	4,142	20,598	-79.9%
Wilkie D. Ferguson	246	367	-32.9%	176	287	-38.6%	165	238	-30.7%	212	370	-42.7%	6,997	10,547	-33.7%
Riverwalk	136	815	-83.4%	106	494	-78.6%	96	389	-75.4%	134	569	-76.4%	3,925	22,029	-82.2%
Fifth Street	149	503	-70.3%	102	317	-67.9%	92	237	-61.4%	155	403	-61.5%	4,212	13,684	-69.2%
Eighth Street	341	2,098	-83.8%	318	1,587	-80.0%	267	1,315	-79.7%	480	1,979	-75.7%	10,315	59,751	-82.7%
Tenth Street	261	745	-64.9%	196	532	-63.2%	175	455	-61.7%	205	781	-73.8%	7,435	21,120	-64.8%
Brickell	1,056	3,618	-70.8%	820	2,048	-59.9%	760	1,766	-56.9%	1,233	3,036	-59.4%	30,786	97,889	-68.6%
Financial District	292	282	3.3%	183	143	27.8%	169	137	23.6%	262	542	-51.7%	8,081	7,869	2.7%
TOTAL	7,343	27,127	-72.9%	5,615	16,515	-66.0%	5,083	13,806	-63.2%	6,265	21,741	-71.2%	210,596	739,814	-71.5%

(1) Boardings estimated based on other station data, and current trends

METROMOVER CUMULATIVE PERCENTAGE RIDERSHIP SHARE



TOTAL MONTHLY AND AVERAGE WEEKDAY RIDERSHIP YEAR OVER YEAR COMPARISON CHARTS – METROMOVER



**“TOP 5 / BOTTOM 5” MOVER STATIONS AVERAGE WEEKDAY RIDERSHIP PERFORMANCE
YEAR OVER YEAR COMPARISONS**

Station	Jun-20	Jun-19	Absolute Delta (1)	Percent Delta
Financial District	292	282	9	3.3%
Eleventh Street	141	243	-102	-41.8%
Wilkie D. Ferguson	246	367	-121	-32.9%
Park West	158	302	-144	-47.7%
Museum Park	61	225	-164	-72.9%
Government Center	1,121	6,268	-5,147	-82.1%
Brickell	1,056	3,618	-2,562	-70.8%
Bayfront Park	744	3,009	-2,265	-75.3%
Eighth Street	341	2,098	-1,758	-83.8%
College/Bayside	292	1,795	-1,503	-83.7%

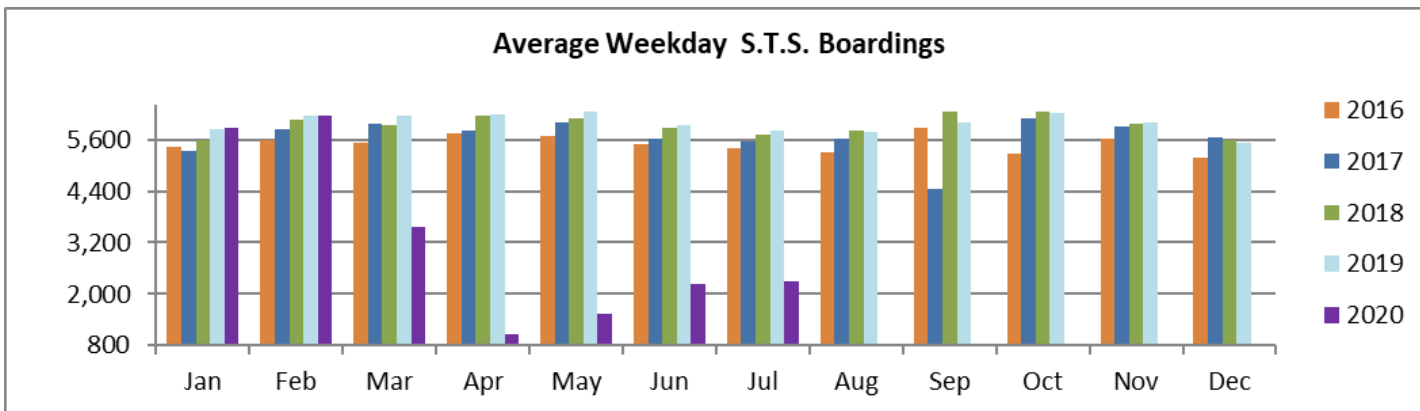
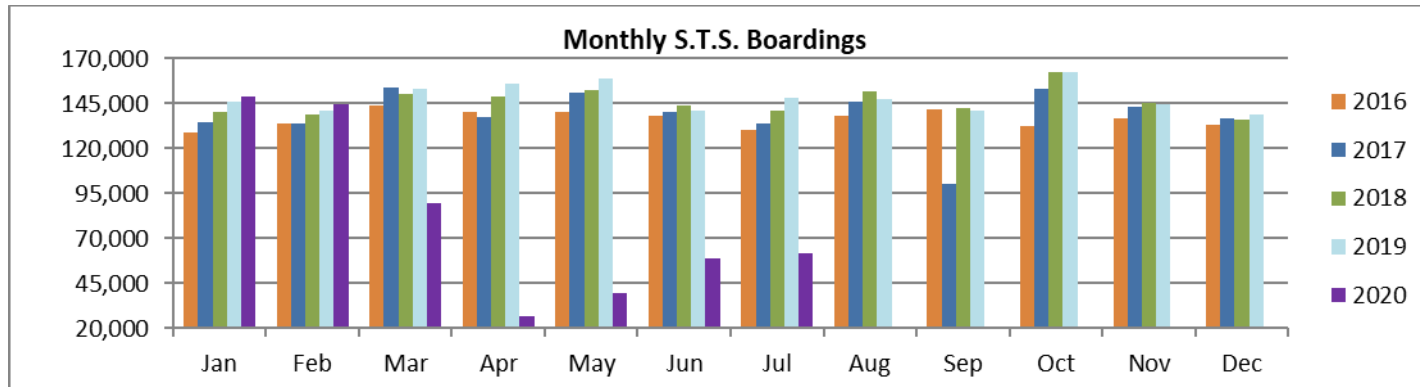
(1) Averages rounded to the nearest boarding.

(†) All but one Metromover stations reported net losses in July 2020, due to effects on ridership from the SARS-CoV-2 pandemic.

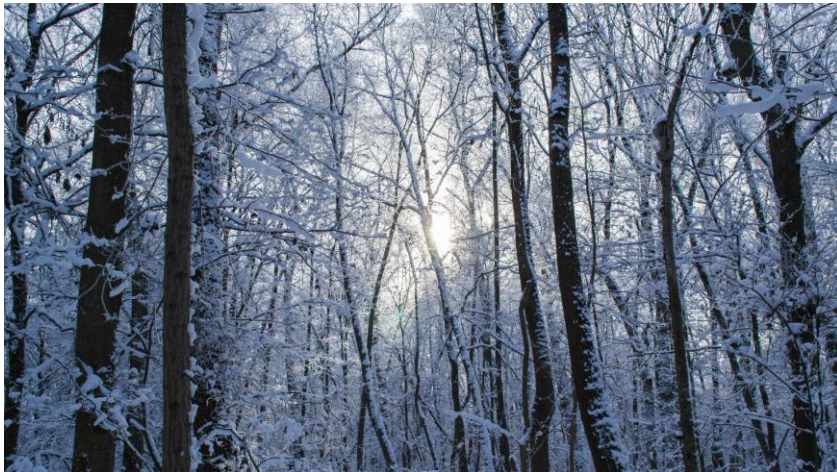
Special Transportation Services



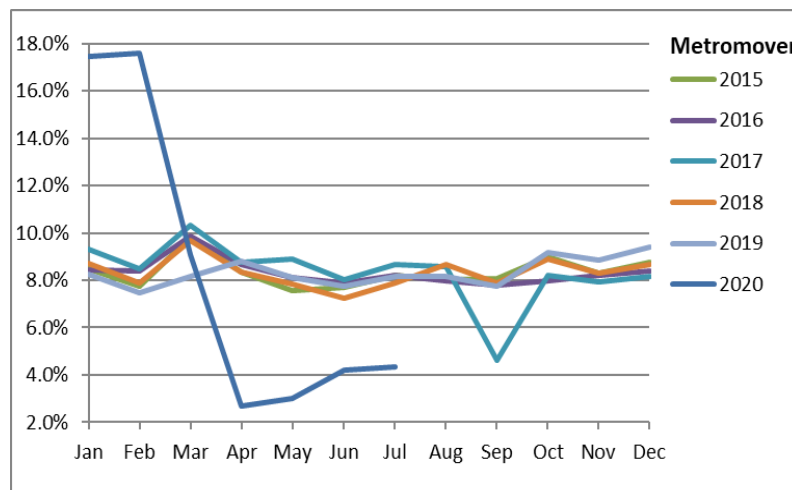
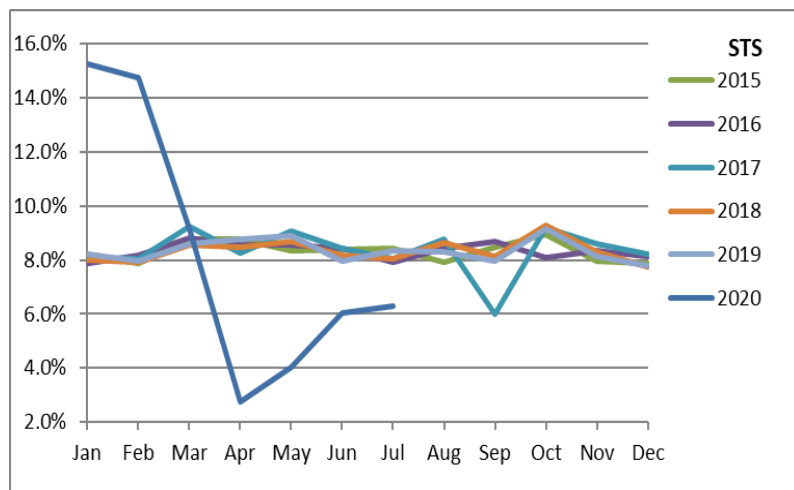
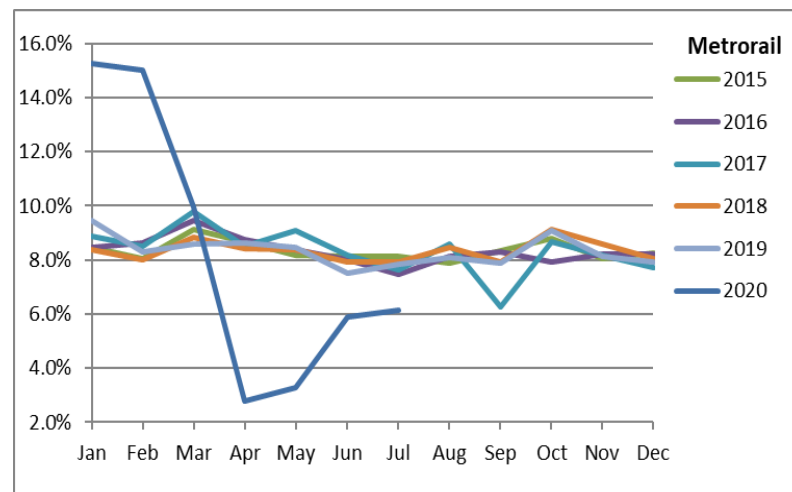
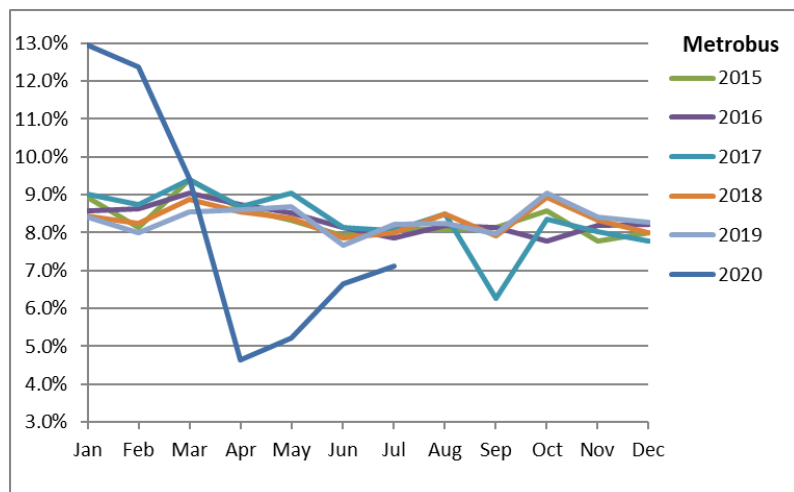
TOTAL MONTHLY AND AVERAGE WEEKDAY RIDERSHIP YEAR OVER YEAR COMPARISON CHARTS – SPECIAL TRANSPORTATION SERVICES (S.T.S.)



Ridership Seasonality



RIDERSHIP SEASONALITY – PERCENT RIDERSHIP SHARE BY MONTH AND CALENDAR YEAR FOR EACH MODE



Note: the prominent dips seen in the fall of 2017 and in the spring and summer of 2020 are due to Hurricane Irma and the SARS-CoV-2 pandemic, respectively.