



## TRANSPORTATION AND PUBLIC WORKS

### RIDERSHIP TECHNICAL REPORT

*Division of Performance and Materials Management*



August 2020

# Table of Contents

<i>Table of Contents</i>	2-3
<b>All Modes Overview</b>	<b>4</b>
Total Monthly Weekday, Saturday and Sunday Monthly Boardings By Mode	5
Average Weekday, Saturday and Sunday Boardings by Mode	6
All-Modes Combined Total Monthly Ridership Comparisons By Fiscal Year	7
All Modes Combined Total Monthly and Average Weekday Ridership – Year over Year Comparison Charts	8
Metrobus Total Monthly Ridership Comparisons by Fiscal Year	9
Metrorail Total Monthly Ridership Comparisons by Fiscal Year	10
Metromover Total Monthly Ridership Comparisons by Fiscal Year	11
STS Total Monthly Ridership Comparisons by Fiscal Year	12
Average Weekday Ridership – Modal Splits	13
<b>Metrobus</b>	<b>14</b>
Monthly and Average Daily Bus Boardings by Route	15-18
Bus Ridership by Service Type	19-20
Bus Routes as Ranked by Percentage of Average Weekday Ridership	21
Metrobus Cumulative Percentage Average Weekday Ridership Share by Route (Top 75%)	22
Total Monthly and Average Weekday Rail Ridership – Year over Year Comparison Charts	23

## Table of Contents (continued)

### **Metrobus (Continued)**

Bus “Top 5 / Bottom 5” Routes Average Weekday Ridership Performance	24
Metrobus Parking Patronage Summary	25

### **Metrorail 26**

Monthly and Average Daily Rail Boardings by Station	27
Metrorail Cumulative Percentage Average Weekday Ridership Share	28
Total Monthly and Average Weekday Rail Ridership – Year over Year Comparison Charts	29
“Top 5 / Bottom 5” Stations Average Weekday Ridership Performance	30
Metrorail Parking Patronage Summary	31

### **Metromover 32**

Monthly and Average Daily Mover Boardings by Station	33
Metromover Cumulative Percentage Average Weekday Ridership Share	34
Total Monthly and Average Weekday Mover Ridership – Year over Year Comparison Charts	35
“Top 5 / Bottom 5” Stations Average Weekday Ridership Performance	36

### **Special Transportation Services (STS) 37**

Total Monthly and Average Weekday STS Ridership – Year over Year Comparison Charts	38
--	----

### **Ridership Seasonality 39**

Ridership Seasonality – Percent Ridership Share by Month and Calendar year for Each Mode	40
--	----

## All Modes Overview



**TOTAL MONTHLY WEEKDAY, SATURDAY AND SUNDAY BOARDINGS BY MODE**  
**August 2020**

<b>TRAVEL MODE</b>	<b>MONTH'S TOTAL WEEKDAYS RIDERSHIP</b>	<b>MONTH'S TOTAL SATURDAYS RIDERSHIP</b>	<b>MONTH'S TOTAL SUNDAYS RIDERSHIP</b>	<b>TOTAL MONTHLY RIDERSHIP</b>	<b>% CHANGE vs Aug 2019 TOTAL MONTH RIDERSHIP</b>
<b>METROBUS (1)</b>	1,884,316	309,637	228,061	2,422,014	-41.1%
<b>METRORAIL (2)</b>	508,917	73,271	59,087	641,275	-56.2%
<b>METROMOVER (3)</b>	154,707	27,847	23,441	205,995	-72.2%
<b>STS (4)</b>	54,188	7,448	4,927	66,563	-54.8%
<b>TOTAL</b>	<b>2,602,128</b>	<b>418,203</b>	<b>315,516</b>	<b>3,335,847</b>	<b>-48.4%</b>

- (1) As a result of the SARS-CoV-2 pandemic, Metrobus rides became fare-free on March 22, 2020; consequently, NextFare System farebox data was replaced by bus automatic passenger counter data starting on that date.
- (2) As a result of the SARS-CoV-2 pandemic, Metrorail rides became fare-free on March 22, 2020; consequently, NextFare System faregate data was replaced by manually-counted data, other estimates, and subsequently video-counted boardings.
- (3) Beginning March 13, 2020 (day of National Emergency Declaration due to SARS-CoV-2 pandemic), only raw data from Metromover automatic passenger counters is reported; no estimates are performed after March 13, 2020.
- (4) Paratransit ridership data as reported by the contractor.

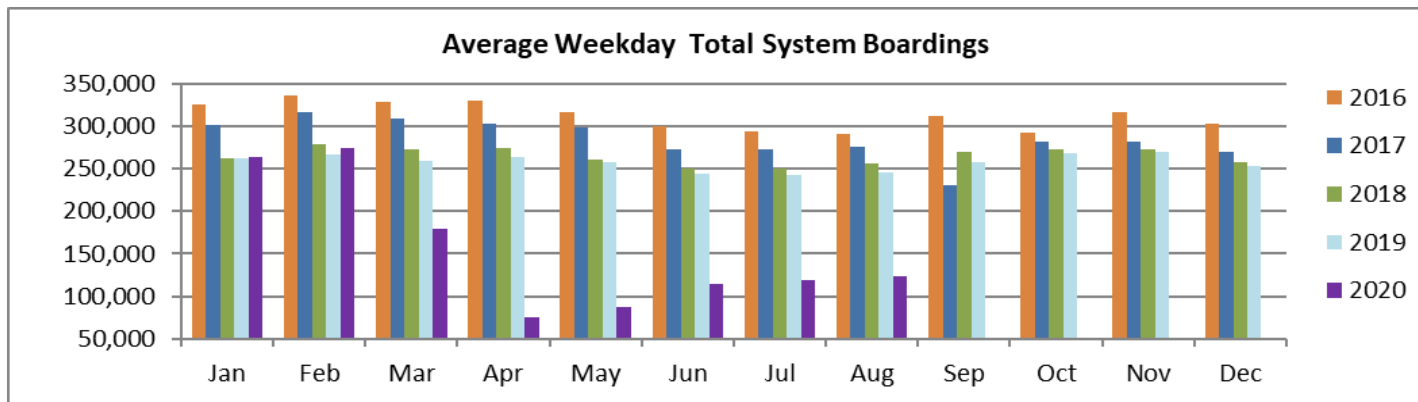
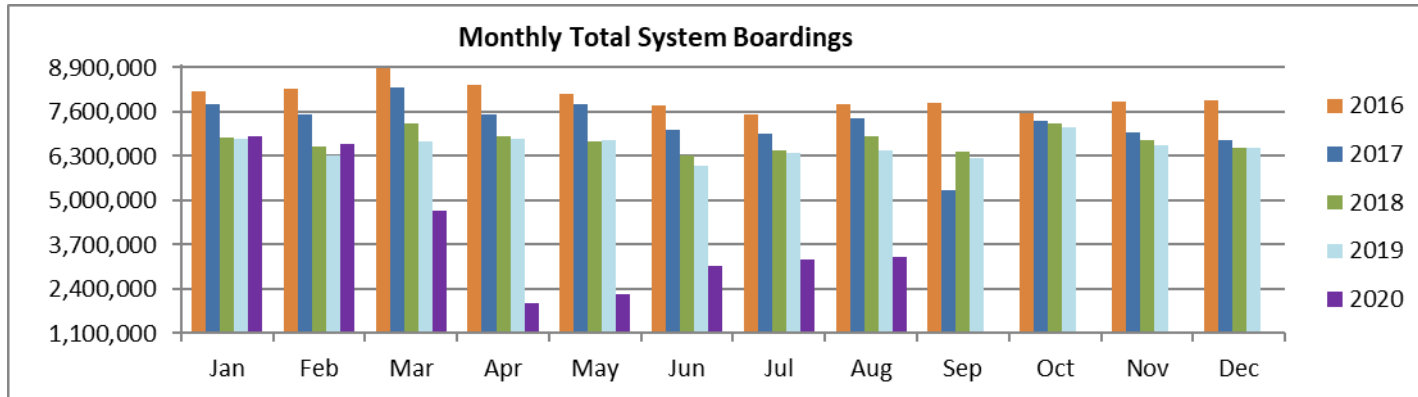
**AVERAGE WEEKDAY, SATURDAY AND SUNDAY BOARDINGS BY MODE**  
**August 2020**

<b>Travel Mode</b>	<b>Average Weekday</b>	<b>Average Saturday</b>	<b>Average Sunday</b>	<b>% Change Aug 2019 Weekday</b>	<b>% Change Aug 2019 Saturday</b>	<b>% Change Aug 2019 Sunday</b>
<b>METROBUS</b>	89,785	61,927	45,612	-41.4%	-32.4%	-35.4%
<b>METRORAIL</b>	24,234	14,654	11,817	-58.6%	-31.7%	-29.9%
<b>METROMOVER</b>	7,367	5,569	4,688	-73.2%	-65.5%	-64.9%
<b>STS</b>	2,580	1,490	985	-55.3%	-36.6%	-53.9%
<b>Totals (1)</b>	<b>123,967</b>	<b>83,641</b>	<b>63,103</b>	<b>-49.4%</b>	<b>-36.4%</b>	<b>-38.7%</b>

## ALL-MODES COMBINED TOTAL MONTHLY RIDERSHIP COMPARISONS BY FISCAL YEAR

All Modes Month						Variances				
	FY 16	FY 17	FY 18	FY 19	FY 20	16 TO 17	17 TO 18	18 TO 19	19 TO 20	16 TO 20
<b>Oct</b>	9,035,169	7,543,706	7,322,886	7,265,208	7,144,116	-16.5%	-2.9%	-0.8%	-1.7%	-20.9%
<b>Nov</b>	8,204,872	7,894,500	7,005,032	6,783,315	6,610,671	-3.8%	-11.3%	-3.2%	-2.5%	-19.4%
<b>Dec</b>	8,461,341	7,919,860	6,783,192	6,538,734	6,549,392	-6.4%	-14.4%	-3.6%	0.2%	-22.6%
<b>Jan</b>	8,198,929	7,814,784	6,834,741	6,797,602	6,890,225	-4.7%	-12.5%	-0.5%	1.4%	-16.0%
<b>Feb</b>	8,286,466	7,505,125	6,591,531	6,312,033	6,671,991	-9.4%	-12.2%	-4.2%	5.7%	-19.5%
<b>Mar</b>	8,874,636	8,317,082	7,244,805	6,712,624	4,694,315	-6.3%	-12.9%	-7.3%	-30.1%	-47.1%
<b>Apr</b>	8,394,885	7,513,151	6,869,802	6,802,085	1,989,545	-10.5%	-8.6%	-1.0%	-70.8%	-76.3%
<b>May</b>	8,132,723	7,841,691	6,742,402	6,755,829	2,258,413	-3.6%	-14.0%	0.2%	-66.6%	-72.2%
<b>Jun</b>	7,778,787	7,069,455	6,318,979	6,026,467	3,082,213	-9.1%	-10.6%	-4.6%	-48.9%	-60.4%
<b>Jul</b>	7,520,144	6,969,807	6,449,526	6,402,110	3,272,074	-7.3%	-7.5%	-0.7%	-48.9%	-56.5%
<b>Aug</b>	7,836,923	7,408,607	6,879,929	6,460,375	3,335,847	-5.5%	-7.1%	-6.1%	-48.4%	-57.4%
<b>Sep</b>	7,848,211	5,284,604	6,412,945	6,240,212		-32.7%	21.4%	-2.7%		
<b>FY Total</b>	<b>98,573,086</b>	<b>89,082,372</b>	<b>81,455,770</b>	<b>79,096,594</b>		<b>-9.6%</b>	<b>-8.6%</b>	<b>-2.9%</b>		

# **TOTAL MONTHLY AND AVERAGE WEEKDAY RIDERSHIP YEAR OVER YEAR COMPARISON CHARTS – ALL MODES COMBINED**





## METROBUS TOTAL MONTHLY RIDERSHIP COMPARISONS BY FISCAL YEAR

<b>Bus</b>	<b>FY 16</b>	<b>FY 17</b>	<b>Variance 16 to 17</b>	<b>FY 18</b>	<b>Variance 17 to 18</b>	<b>FY 19</b>	<b>Variance 18 to 19</b>	<b>FY 20</b>	<b>Variance 19 to 20</b>	<b>Variance 16 to 20</b>
<b>Oct</b>	6,058,615	4,925,781	-18.7%	4,709,590	-4.4%	4,554,886	-3.3%	4,507,012	-1.1%	-25.6%
<b>Nov</b>	5,483,456	5,181,524	-5.5%	4,522,250	-12.7%	4,245,535	-6.1%	4,197,225	-1.1%	-23.5%
<b>Dec</b>	5,642,424	5,192,692	-8.0%	4,380,099	-15.6%	4,081,581	-6.8%	4,126,990	1.1%	-26.9%
<b>Jan</b>	5,417,604	5,084,085	-6.2%	4,307,001	-15.3%	4,195,911	-2.6%	4,316,998	2.9%	-20.3%
<b>Feb</b>	5,467,632	4,914,307	-10.1%	4,208,811	-14.4%	3,994,019	-5.1%	4,123,083	3.2%	-24.6%
<b>Mar</b>	5,725,541	5,287,813	-7.6%	4,534,564	-14.2%	4,266,768	-5.9%	3,136,162	-26.5%	-45.2%
<b>Apr</b>	5,524,501	4,895,697	-11.4%	4,360,997	-10.9%	4,291,135	-1.6%	1,544,316	-64.0%	-72.0%
<b>May</b>	5,391,463	5,087,877	-5.6%	4,277,628	-15.9%	4,330,922	1.2%	1,734,609	-59.9%	-67.8%
<b>Jun</b>	5,141,601	4,586,556	-10.8%	4,009,340	-12.6%	3,823,863	-4.6%	2,210,725	-42.2%	-57.0%
<b>Jul</b>	4,970,953	4,539,259	-8.7%	4,080,664	-10.1%	4,094,906	0.3%	2,366,749	-42.2%	-52.4%
<b>Aug</b>	5,172,498	4,780,589	-7.6%	4,326,980	-9.5%	4,109,613	-5.0%	2,422,014	-41.1%	-53.2%
<b>Sep</b>	5,154,265	3,524,818	-31.6%	4,041,992	14.7%	3,971,220	-1.8%			
<b>FY Total</b>	<b>65,150,553</b>	<b>58,000,998</b>	<b>-11.0%</b>	<b>51,759,916</b>	<b>-10.8%</b>	<b>49,960,359</b>	<b>-3.5%</b>			

## METRORAIL TOTAL MONTHLY RIDERSHIP COMPARISONS BY FISCAL YEAR

Rail	FY 16	FY 17	Variance 16 to 17	FY 18	Variance 17 to 18	FY 19	Variance 18 to 19	FY 20	Variance 19 to 20	Variance 16 to 20
Oct	1,930,352	1,670,933	-13.4%	1,708,564	2.3%	1,757,225	2.8%	1,643,166	-6.5%	-14.9%
Nov	1,761,820	1,734,267	-1.6%	1,609,888	-7.2%	1,656,929	2.9%	1,469,448	-11.3%	-16.6%
Dec	1,813,506	1,734,768	-4.3%	1,517,341	-12.5%	1,553,804	2.4%	1,433,928	-7.7%	-20.9%
Jan	1,787,476	1,743,638	-2.5%	1,615,576	-7.3%	1,708,695	5.8%	1,576,340	-7.7%	-11.8%
Feb	1,824,256	1,676,215	-8.1%	1,545,581	-7.8%	1,501,458	-2.9%	1,549,118	3.2%	-15.1%
Mar	1,994,796	1,926,434	-3.4%	1,700,714	-11.7%	1,554,851	-8.6%	1,027,319	-33.9%	-48.5%
Apr	1,843,808	1,677,459	-9.0%	1,619,890	-3.4%	1,559,446	-3.7%	287,803	-81.5%	-84.4%
May	1,769,327	1,787,885	1.0%	1,618,504	-9.5%	1,531,597	-5.4%	337,696	-78.0%	-80.9%
Jun	1,692,476	1,605,234	-5.2%	1,524,311	-5.0%	1,359,966	-10.8%	608,758	-55.2%	-64.0%
Jul	1,577,572	1,500,243	-4.9%	1,527,380	1.8%	1,419,158	-7.1%	632,964	-55.4%	-59.9%
Aug	1,711,665	1,693,524	-1.1%	1,632,471	-3.6%	1,463,646	-10.3%	641,275	-56.2%	-62.5%
Sep	1,753,985	1,234,135	-29.6%	1,530,088	24.0%	1,427,726	-6.7%			
Total	21,461,039	19,984,735	-6.9%	19,150,308	-4.2%	18,494,501	-3.4%			

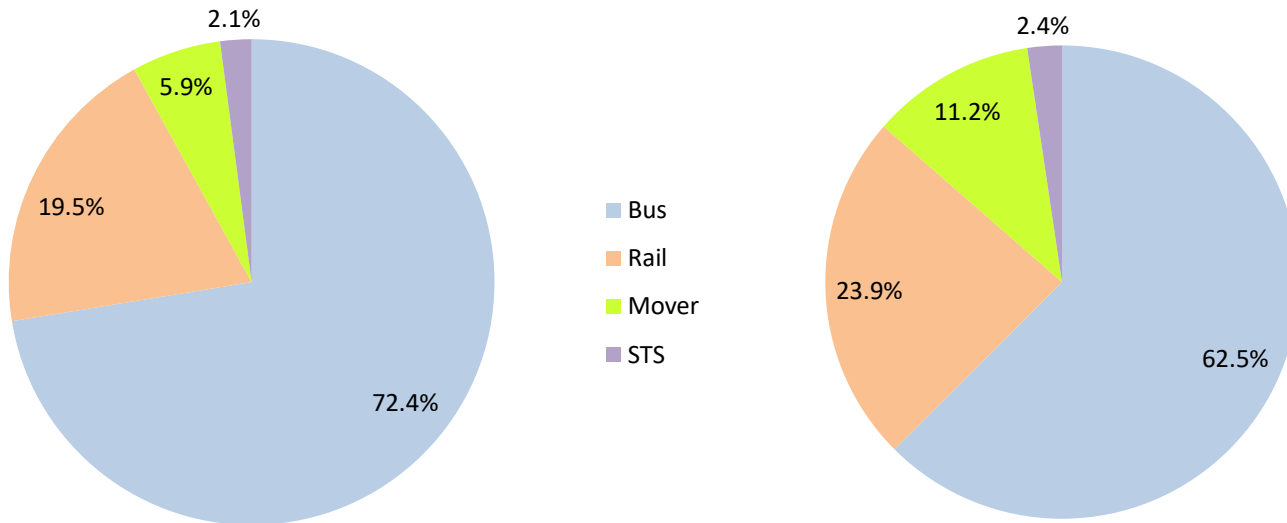
## METROMOVER TOTAL MONTHLY RIDERSHIP COMPARISONS BY FISCAL YEAR

<b>Mover</b>	<b>FY 16</b>	<b>FY 17</b>	<b>Variance 16 to 17</b>	<b>FY 18</b>	<b>Variance 17 to 18</b>	<b>FY 19</b>	<b>Variance 18 to 19</b>	<b>FY 20</b>	<b>Variance 19 to 20</b>	<b>Variance 16 to 20</b>
<b>Oct</b>	899,379	814,781	-9.4%	751,323	-7.8%	790,533	5.2%	831,234	5.1%	-7.6%
<b>Nov</b>	828,643	841,679	1.6%	729,519	-13.3%	735,198	0.8%	799,632	8.8%	-3.5%
<b>Dec</b>	875,701	858,961	-1.9%	748,797	-12.8%	767,239	2.5%	849,832	10.8%	-3.0%
<b>Jan</b>	864,630	852,788	-1.4%	772,122	-9.5%	746,728	-3.3%	847,773	13.5%	-1.9%
<b>Feb</b>	860,579	780,514	-9.3%	698,107	-10.6%	675,160	-3.3%	855,398	26.7%	-0.6%
<b>Mar</b>	1,010,118	949,045	-6.0%	859,143	-9.5%	737,814	-14.1%	441,200	-40.2%	-56.3%
<b>Apr</b>	886,427	802,778	-9.4%	740,036	-7.8%	795,696	7.5%	130,549	-83.6%	-85.3%
<b>May</b>	831,477	814,791	-2.0%	694,106	-14.8%	734,645	5.8%	146,454	-80.1%	-82.4%
<b>Jun</b>	806,774	737,042	-8.6%	641,675	-12.9%	701,318	9.3%	203,637	-71.0%	-74.8%
<b>Jul</b>	841,630	796,649	-5.3%	700,462	-12.1%	739,814	5.6%	210,596	-71.5%	-75.0%
<b>Aug</b>	814,796	788,734	-3.2%	768,728	-2.5%	739,785	-3.8%	205,995	-72.2%	-74.7%
<b>Sep</b>	797,995	425,641	-46.7%	698,505	64.1%	699,879	0.2%			
<b>Total</b>	<b>10,318,149</b>	<b>9,463,403</b>	<b>-8.3%</b>	<b>8,802,523</b>	<b>-7.0%</b>	<b>8,863,809</b>	<b>0.7%</b>			

## SPECIAL TRANSPORTATION SERVICES (STS) TOTAL MONTHLY RIDERSHIP COMPARISONS BY FISCAL YEAR

STS	FY 16	FY 17	Variance 16 to 17	FY 18	Variance 17 to 18	FY 19	Variance 18 to 19	FY 20	Variance 19 to 20	Variance 16 to 20
Oct	146,823	132,211	-10.0%	153,409	16.0%	162,564	6.0%	162,704	0.1%	10.8%
Nov	130,953	137,030	4.6%	143,375	4.6%	145,653	1.6%	144,366	-0.9%	10.2%
Dec	129,710	133,439	2.9%	136,955	2.6%	136,110	-0.6%	138,642	1.9%	6.9%
Jan	129,219	134,273	3.9%	140,042	4.3%	146,268	4.4%	149,114	1.9%	15.4%
Feb	133,999	134,089	0.1%	139,032	3.7%	141,396	1.7%	144,392	2.1%	7.8%
Mar	144,181	153,790	6.7%	150,384	-2.2%	153,191	1.9%	89,634	-41.5%	-37.8%
Apr	140,149	137,217	-2.1%	148,879	8.5%	155,808	4.7%	26,877	-82.7%	-80.8%
May	140,456	151,138	7.6%	152,164	0.7%	158,665	4.3%	39,654	-75.0%	-71.8%
Jun	137,936	140,623	1.9%	143,653	2.2%	141,320	-1.6%	59,093	-58.2%	-57.2%
Jul	129,989	133,656	2.8%	141,020	5.5%	148,232	5.1%	61,765	-58.3%	-52.5%
Aug	137,964	145,760	5.7%	151,750	4.1%	147,331	-2.9%	66,563	-54.8%	-51.8%
Sep	141,966	100,010	-29.6%	142,360	42.3%	141,387	-0.7%			
<b>Total</b>	<b>1,643,345</b>	<b>1,633,236</b>	<b>-0.6%</b>	<b>1,743,023</b>	<b>6.7%</b>	<b>1,777,925</b>	<b>2.0%</b>			

## AVERAGE WEEKDAY RIDERSHIP - MODAL SPLITS



## Metrobus



August 2020

# METROBUS MONTHLY AND AVERAGE DAILY BOARDINGS BY ROUTE

Route	Average Weekday	Average Weekday	Percent Change	Average Saturday	Average Saturday	Percent Change	Average Sunday	Average Sunday	Percent Change	Total Monthly	Total Monthly	Percent Change
	Aug-20	Aug-19	20 vs 19	Aug-20	Aug-19	20 vs 19	Aug-20	Aug-19	20 vs 19	Aug-20	Aug-19	20 vs 19
<b>1 (*)</b>	178	275	-35.2%	175	248	-29.4%	128	185	-30.7%	5,257	8,029	-34.5%
<b>2</b>	1,406	2,238	-37.2%	1,008	1,456	-30.8%	620	1,030	-39.8%	37,668	60,642	-37.9%
<b>3</b>	2,951	4,622	-36.2%	2,863	4,995	-42.7%	2,526	4,068	-37.9%	88,912	142,933	-37.8%
<b>7</b>	1,659	3,001	-44.7%	993	1,772	-44.0%	689	1,349	-48.9%	43,245	80,269	-46.1%
<b>8</b>	2,174	3,550	-38.8%	1,771	1,897	-6.6%	931	1,629	-42.9%	59,166	94,099	-37.1%
<b>9</b>	3,553	4,803	-26.0%	2,366	3,109	-23.9%	1,606	2,386	-32.7%	94,470	130,755	-27.8%
<b>10</b>	1,041	1,973	-47.2%	1,053	1,683	-37.4%	732	1,211	-39.5%	30,791	56,656	-45.7%
<b>11</b>	3,940	6,758	-41.7%	3,421	5,097	-32.9%	2,061	3,813	-45.9%	110,149	189,416	-41.8%
<b>12</b>	1,749	2,539	-31.1%							36,723	55,848	-34.2%
<b>16</b>	925	1,630	-43.2%	988	1,453	-32.0%	584	857	-31.8%	27,292	46,555	-41.4%
<b>17</b>	1,981	3,414	-42.0%	1,342	2,461	-45.5%	1,197	1,681	-28.8%	54,305	94,137	-42.3%
<b>19</b>	707	1,195	-40.9%							14,840	26,293	-43.6%
<b>21</b>	1,349	1,704	-20.8%							28,333	37,486	-24.4%
<b>22</b>	2,130	3,304	-35.5%	1,381	1,886	-26.8%	902	1,431	-37.0%	56,144	87,852	-36.1%
<b>24 - Coral Way Limited</b>	1,024	1,619	-36.8%	865	1,159	-25.4%	466	924	-49.5%	28,153	45,101	-37.6%
<b>27</b>	3,437	6,248	-45.0%	2,588	4,082	-36.6%	1,916	2,777	-31.0%	94,706	168,973	-44.0%
<b>29 (*)</b>	272	641	-57.6%							5,705	14,110	-59.6%
<b>31 - BUSWAY LOCAL</b>	401	1,022	-60.7%	512	884	-42.1%	332	557	-40.3%	12,645	29,131	-56.6%
<b>32</b>	1,496	2,197	-31.9%	813	1,013	-19.7%	800	740	8.1%	39,474	56,356	-30.0%
<b>33</b>	802	1,493	-46.3%	531	958	-44.5%	381	534	-28.6%	21,396	39,759	-46.2%
<b>34 EXPRESS (*)</b>	694	1,800	-61.5%							14,573	39,605	-63.2%
<b>35 (*)</b>	1,360	2,166	-37.2%	866	1,097	-21.1%	765	897	-14.6%	36,716	56,717	-35.3%
<b>36</b>	1,401	2,304	-39.2%	1,142	1,234	-7.5%	892	1,100	-18.9%	39,581	61,253	-35.4%
<b>37</b>	1,801	3,103	-42.0%	1,319	2,130	-38.1%	976	1,712	-43.0%	49,288	85,774	-42.5%
<b>38</b>	3,056	6,013	-49.2%	2,346	4,663	-49.7%	2,409	3,853	-37.5%	87,944	171,014	-48.6%
<b>39 EXPRESS (*)</b>	123	861	-85.7%							2,581	18,946	-86.4%

# METROBUS MONTHLY AND AVERAGE DAILY BOARDINGS BY ROUTE

Route	Average Weekday	Average Weekday	Percent Change	Average Saturday	Average Saturday	Percent Change	Average Sunday	Average Sunday	Percent Change	Total Monthly	Total Monthly	Percent Change
	Aug-20	Aug-19	20 vs 19	Aug-20	Aug-19	20 vs 19	Aug-20	Aug-19	20 vs 19	Aug-20	Aug-19	20 vs 19
<b>40</b>	816	1,605	-49.2%	375	698	-46.3%	248	448	-44.7%	20,239	40,593	-50.1%
<b>42</b>	536	785	-31.7%	366	529	-30.9%	244	349	-29.9%	14,316	21,312	-32.8%
<b>46 - LIBERTY CITY CONN. (*)</b>	19	23	-17.5%							397	504	-21.2%
<b>51 - FLAGLER MAX</b>	1,417	2,879	-50.8%							29,751	63,344	-53.0%
<b>52</b>	655	1,170	-44.0%	335	627	-46.5%	321	474	-32.3%	17,046	30,782	-44.6%
<b>54</b>	2,250	2,723	-17.4%	1,573	1,716	-8.3%	899	1,136	-20.8%	59,602	73,034	-18.4%
<b>56 (*)</b>	135	345	-61.0%							2,828	7,589	-62.7%
<b>57 (*)</b>	229	395	-42.0%							4,811	8,691	-44.6%
<b>62</b>	1,447	1,714	-15.5%	1,216	1,282	-5.1%	805	847	-4.9%	40,504	47,499	-14.7%
<b>71 (*)</b>	305	533	-42.8%	136	219	-38.1%	99	132	-25.3%	7,572	13,344	-43.3%
<b>72 (*)</b>	337	721	-53.3%	198	323	-38.5%	129	257	-49.6%	8,709	18,513	-53.0%
<b>73</b>	1,053	2,003	-47.4%	551	976	-43.5%	292	454	-35.7%	26,327	50,765	-48.1%
<b>75</b>	630	1,277	-50.7%	349	437	-20.1%	205	242	-15.5%	15,994	31,249	-48.8%
<b>77</b>	3,769	6,838	-44.9%	3,059	3,973	-23.0%	1,752	2,941	-40.4%	103,210	182,065	-43.3%
<b>82 - WESTCHESTER CIRC. (*)</b>	29	51	-43.1%	27	52	-47.5%				746	1,382	-46.0%
<b>87</b>	641	1,404	-54.4%	286	453	-37.0%	156	320	-51.3%	15,660	34,437	-54.5%
<b>88</b>	1,202	1,924	-37.5%	798	1,549	-48.5%	623	1,179	-47.1%	32,350	54,777	-40.9%
<b>93 - BISCAYNE MAX</b>	1,296	3,154	-58.9%							27,220	69,381	-60.8%
<b>95 EXPRESS (*)</b>	294	1,764	-83.3%							6,172	38,802	-84.1%
<b>99</b>	799	1,324	-39.6%	450	877	-48.7%	381	595	-35.9%	20,939	35,882	-41.6%
<b>101 - A (*)</b>	88	149	-40.9%	42	60	-30.6%	27	45	-40.6%	2,185	3,749	-41.7%
<b>102 - B</b>	855	1,524	-43.9%	410	716	-42.7%	396	657	-39.6%	21,990	39,726	-44.6%
<b>103 - C</b>	603	420	43.7%	192	263	-27.1%	145	174	-16.5%	14,358	11,252	27.6%
<b>104</b>	213	740	-71.3%	78	432	-82.0%	102	311	-67.2%	5,365	19,684	-72.7%
<b>105 - E</b>	724	1,100	-34.2%	362	596	-39.2%	375	550	-31.9%	18,884	29,371	-35.7%



# METROBUS MONTHLY AND AVERAGE DAILY BOARDINGS BY ROUTE

Route	Average Weekday	Average Weekday	Percent Change	Average Saturday	Average Saturday	Percent Change	Average Sunday	Average Sunday	Percent Change	Total Monthly	Total Monthly	Percent Change
	Aug-20	Aug-19	20 vs 19	Aug-20	Aug-19	20 vs 19	Aug-20	Aug-19	20 vs 19	Aug-20	Aug-19	20 vs 19
107 - G	693	1,476	-53.1%	744	994	-25.1%	463	752	-38.5%	20,588	40,457	-49.1%
108 - H	363	426	-14.6%	284	326	-12.9%	177	283	-37.3%	9,937	12,123	-18.0%
110 - J	1,546	2,475	-37.5%	1,213	1,863	-34.9%	964	1,478	-34.8%	43,355	69,683	-37.8%
112 - L	5,649	7,126	-20.7%	4,957	5,670	-12.6%	2,994	4,412	-32.1%	158,392	202,773	-21.9%
113 - M	441	797	-44.7%	282	454	-37.9%	201	379	-46.9%	11,670	21,321	-45.3%
115 (*)	202	136	49.0%	132	94	40.3%	103	72	43.3%	5,415	3,740	44.8%
119 - S	6,027	8,221	-26.7%	4,383	6,962	-37.0%	4,515	6,739	-33.0%	171,066	242,620	-29.5%
120 - BEACH MAX	3,556	6,126	-41.9%	2,958	4,707	-37.2%	1,665	3,315	-49.8%	97,789	171,554	-43.0%
132 TRI-RAIL (DORAL)	10	3	196.8%							204	72	183.3%
135	572	1,108	-48.3%	252	480	-47.6%	163	343	-52.4%	14,095	28,144	-49.9%
136	64	143	-54.9%							1,352	3,143	-57.0%
137 - WEST DADE CONN.	841	1,501	-43.9%	489	1,061	-53.9%	424	816	-48.1%	22,233	41,578	-46.5%
150 - MIAMI BEACH AIRPORT FLYER (*)	748	1,733	-56.8%	709	1,520	-53.3%	737	1,493	-50.6%	22,952	51,690	-55.6%
155 - BISCAYNE GARDENS CIRCULATOR (*)	31	44	-30.2%							649	974	-33.4%
183	1,955	2,759	-29.2%	1,258	1,728	-27.2%	982	1,290	-23.9%	52,242	74,507	-29.9%
200 - CUTLER BAY LOCAL	71	146	-51.3%	51	129	-60.5%	32	52	-37.4%	1,909	4,065	-53.0%
202 - LITTLE HAITI CONN. (*)	104	145	-28.3%	51	54	-5.2%	42	45	-6.3%	2,646	3,633	-27.2%
207 (7st) - LITTLE HAVANA CIRC	803	1,438	-44.2%	676	918	-26.3%	482	647	-25.5%	22,647	38,811	-41.6%
208 (8st) - LITTLE HAVANA CIRC	894	1,357	-34.1%	872	1,050	-17.0%	574	882	-34.9%	26,012	38,642	-32.7%
210 - SKYLAKE CIRC (*)	181	279	-35.3%	136	222	-38.6%	85	192	-55.4%	4,906	8,020	-38.8%
211 - OVERTOWN CIRC. (*)	39	66	-40.6%							827	1,458	-43.3%
212 - SWEETWATER CIRC. (*)	12	39	-70.2%							246	865	-71.6%
217 - BUNCHE PARK CIRC (*)	64	54	17.9%							1,339	1,190	12.5%
238 EAST/WEST CONN.	177	469	-62.2%							3,719	10,311	-63.9%

# METROBUS MONTHLY AND AVERAGE DAILY BOARDINGS BY ROUTE

Route	Average Weekday	Average Weekday	Percent Change	Average Saturday	Average Saturday	Percent Change	Average Sunday	Average Sunday	Percent Change	Total Monthly	Total Monthly	Percent Change
	Aug-20	Aug-19	20 vs 19	Aug-20	Aug-19	20 vs 19	Aug-20	Aug-19	20 vs 19	Aug-20	Aug-19	20 vs 19
246 - NIGHT OWL	6	96	-93.8%	5	96	-95.2%	1	89	-98.7%	154	2,948	-94.8%
248 - PRINCETON CIRCULATOR (*)	73	112	-34.3%							1,541	2,456	-37.3%
252 - CORAL REEF MAX	448	812	-44.8%	154	275	-44.0%	105	238	-55.8%	10,705	20,192	-47.0%
254 - BROWNSVILLE CIRC. (*)	16	15	6.0%							343	339	1.2%
267 - LUDLAM LIMITED (*)	79	117	-32.1%							1,666	2,570	-35.2%
272 SUNSET KAT (*)	208	486	-57.3%							4,358	10,682	-59.2%
277 - 7th AVENUE MAX	350	562	-37.8%							7,342	12,371	-40.7%
286 - NORTH POINTE CIRC. (*)	21	73	-71.4%	27	65	-58.5%				575	1,936	-70.3%
287 - SAGA BAY MAX	86	313	-72.6%							1,798	6,885	-73.9%
297-27th AVENUE ORANGE MAX	621	1,130	-45.0%							13,051	24,863	-47.5%
301 DADE-MONROE EXPRESS (*)	715	819	-12.7%	746	814	-8.4%	692	795	-12.9%	22,203	25,262	-12.1%
302 CARD SOUND EXPRESS (*)	47	71	-33.5%	30	44	-32.4%	30	49	-39.3%	1,293	1,985	-34.9%
338 - WEEKEND EXPRESS				61	215	-71.5%	61	236	-74.2%	611	2,019	-69.7%
344 (*)	50	86	-41.9%							1,047	1,888	-44.5%
12/21 WEEKEND INTERL.				2,278	2,585	-11.9%	2,004	2,002	0.1%	21,414	20,932	2.3%
GREEN HILLS SHUTTLE (*)	5	6	-23.2%							24	25	-4.0%
KINGS CREEK SHUTTLE (*)	4	22	-80.9%							17	111	-84.7%
SIERRA LAKES SHUTTLE (*)	19	21	-11.6%							75	106	-29.2%
ROBERT SHARP SHUTTLE (*)	22	4	528.6%							88	14	528.6%
AHEPA SHUTTLE (*)	19	27	-28.7%							77	135	-43.0%
FEDERATION GARDENS SHUTTLE (*)				23	53	-56.7%				114	263	-56.7%
<b>Total (†)</b>	<b>89,785</b>	<b>153,291</b>	<b>-41.4%</b>	<b>61,927</b>	<b>91,569</b>	<b>-32.4%</b>	<b>45,612</b>	<b>70,575</b>	<b>-35.4%</b>	<b>2,422,014</b>	<b>4,109,613</b>	<b>-41.1%</b>

(1) Includes shuttles and those routes which were not run both years.

(2) Nearly every bus route experienced year-over-year losses as a result of the SARS-CoV-2 pandemic; rides were fare-free beginning March 22, 2020.

(\*) The following routes are entirely operated under contract: 1, 29, 34, 35, 39, 46, 56, 57, 71, 72, 82, 95, 101-A, 115, 135, 150, 155, 202, 210, 211, 212, 217, 248, 254, 267, 272, 286, 301, 302 and 344, although some supplemental runs may be performed by DTPW. Conversely, a few routes that are nominally run by DTPW may have a few supplemental runs operated by contractors; Dade-Monroe routes 301 and 302 as well as six Lifeline routes are also under contracted operation.

(†) Not shown are several express routes were suspended at the end of March or the beginning of April 2020, due to the SARS-CoV-2 pandemic, while other routes had alignment and schedule modifications made to them, in an ongoing effort to optimize service delivery; the July 2019 totals include those routes.

## BUS RIDERSHIP BY ROUTE SERVICE TYPE

Boardings by Service Type and Route	Average Weekday Aug-20	Average Weekday Aug-19	Percent Change 20 vs 19	Average Saturday Aug-20	Average Saturday Aug-19	Percent Change 20 vs 19	Average Sunday Aug-20	Average Sunday Aug-19	Percent Change 20 vs 19	Total Monthly Aug-20	Total Monthly Aug-19	Percent Change 20 vs 19
<b>Express Routes</b>												
34 EXPRESS (*)	694	1,800	-61.5%							14,573	39,605	-63.2%
39 EXPRESS (*)	123	861	-85.7%							2,581	18,946	-86.4%
95-EXPRESS (*)	294	1,764	-83.3%							6,172	38,802	-84.1%
150-MIAMI BEACH AIRPORT FLYER (*)	748	1,733	-56.8%	709	1,520	-53.3%	737	1,493	-50.6%	22,952	51,690	-55.6%
175 - NW MIAMI-DADE EXPRESS												
195 EXPRESS - BROWARD BLVD		398									8,756	-100.0%
196 EXPRESS - SHERIDAN ST		390									8,587	-100.0%
295 EXPRESS - BROWARD BLVD - CIVIC CENTER		246									5,405	-100.0%
296 EXPRESS - SHERIDAN ST - CIVIC CENTER		229									5,034	-100.0%
204 KAT-KILLIAN		973									21,400	-100.0%
288 KENDALL CRUISER		752									16,543	-100.0%
338 - WEEKEND EXPRESS				61	215	-71.5%	61	236	-74.2%	611	2,019	-69.7%
836 EXPRESS												
<b>Subtotal Express Routes</b>	<b>1,859</b>	<b>9,145</b>	<b>-79.7%</b>	<b>771</b>	<b>1,735</b>	<b>-55.6%</b>	<b>798</b>	<b>1,729</b>	<b>-53.8%</b>	<b>46,889</b>	<b>216,787</b>	<b>-78.4%</b>
<b>Percentage of All Bus Routes</b>	<b>2.1%</b>	<b>6.0%</b>		<b>1.2%</b>	<b>1.9%</b>		<b>1.8%</b>	<b>2.4%</b>		<b>1.9%</b>	<b>5.3%</b>	
<b>Contracted Regular &amp; Circulator Routes</b>												
1	178	275	-35.2%	175	248	-29.4%	128	185	-30.7%	5,257	8,029	-34.5%
29	272	641	-57.6%							5,705	14,110	-59.6%
35	1,360	2,166	-37.2%	866	1,097	-21.1%	765	897	-14.6%	36,716	56,717	-35.3%
46 - LIBERTY CITY CONN.	19	23	-17.5%							397	504	-21.2%
56	135	345	-61.0%							2,828	7,589	-62.7%
71	305	533	-42.8%	136	219	-38.1%	99	132	-25.3%	7,572	13,344	-43.3%
72	337	721	-53.3%	198	323	-38.5%	129	257	-49.6%	8,709	18,513	-53.0%
82 - WESTCHESTER CIRC	29	51	-43.1%	27	52					746	1,382	-46.0%
101 - A	88	149	-40.9%	42	60	-30.6%	27	45	-40.6%	2,185	3,749	-41.7%
115	202	136	49.0%	132	94	40.3%	103	72	43.3%	5,415	3,740	44.8%
155 - BISCAYNE GARDENS CIRC	31	44	-30.2%							649	974	-33.4%
202 - LITTLE HAITI CONN.	104	145	-28.3%	51	54	-5.2%	42	45	-6.3%	2,646	3,633	-27.2%
210 - SKYLAKE CIRC	181	279	-35.3%	136	222	-38.6%	85	192	-55.4%	4,906	8,020	-38.8%
211-OVERTOWN CIRC	39	66	-40.6%							827	1,458	-43.3%
212-SWEETWATER CIRC	12	39	-70.2%							246	865	-71.6%
217 - BUNCHE PARK CIRC	64	54	17.9%							1,339	1,190	12.5%
248 - PRINCETON CIRCULATOR	73	112	-34.3%							1,541	2,456	-37.3%
254-BROWNSVILLE CIRC	16	15	6.0%							343	339	1.2%
267-LUDLAM LIMITED	79	117	-32.1%							1,666	2,570	-35.2%
272 KAT-SUNSET	208	486	-57.3%							4,358	10,682	-59.2%
286-NORTH POINTE CIRC	21	73	-71.4%	27	65	-58.5%				575	1,936	-70.3%
344	50	86	-41.9%							1,047	1,888	-44.5%
<b>Subtotal Contracted Reg. &amp; Circ. Routes</b>	<b>3,802</b>	<b>6,556</b>	<b>-42.0%</b>	<b>1,789</b>	<b>2,433</b>	<b>-26.5%</b>	<b>1,379</b>	<b>1,824</b>	<b>-24.4%</b>	<b>95,673</b>	<b>163,688</b>	<b>-41.6%</b>
<b>Percentage of All Bus Routes</b>	<b>4.2%</b>	<b>4.3%</b>		<b>2.9%</b>	<b>2.7%</b>		<b>3.0%</b>	<b>2.6%</b>		<b>4.0%</b>	<b>4.0%</b>	

## BUS RIDERSHIP BY ROUTE SERVICE TYPE

Boardings by Service Type and Route	Average Weekday	Average Weekday	Percent Change	Average Saturday	Average Saturday	Percent Change	Average Sunday	Average Sunday	Percent Change	Total Monthly	Total Monthly	Percent Change
	Aug-20	Aug-19	20 vs 19	Aug-20	Aug-19	20 vs 19	Aug-20	Aug-19	20 vs 19	Aug-20	Aug-19	20 vs 19
<b>Contracted Express Routes</b>												
301-DADE MONROE EXPRESS	715	819	-12.7%	746	814	-8.4%	692	795	-12.9%	22,203	25,262	-12.1%
302-CARD SOUND EXPRESS	47	71	-33.5%	30	44	-32.4%	30	49	-39.3%	1,293	1,985	-34.9%
<b>Subtotal Contracted Express Routes</b>	<b>762</b>	<b>890</b>	<b>-14.3%</b>	<b>776</b>	<b>858</b>	<b>-9.6%</b>	<b>722</b>	<b>844</b>	<b>-14.5%</b>	<b>23,496</b>	<b>27,247</b>	<b>-13.8%</b>
<b>Percentage of All Bus Routes</b>	<b>0.8%</b>	<b>0.6%</b>		<b>1.3%</b>	<b>0.9%</b>		<b>1.6%</b>	<b>1.2%</b>		<b>1.0%</b>	<b>0.7%</b>	
<b>Limited Stop Routes</b>												
51-FLAGLER MAX	1,417	2,879	-50.8%							29,751	63,344	-53.0%
93 - BISCAYNE MAX	1,296	3,154	-58.9%							27,220	69,381	-60.8%
120 - BEACH MAX	3,556	6,126	-41.9%	2,958	4,707	-37.2%	1,665	3,315	-49.8%	97,789	171,554	-43.0%
252-CORAL REEF MAX	448	812	-44.8%	154	275	-44.0%	105	238	-55.8%	10,705	20,192	-47.0%
277-7TH AVENUE MAX	350	562	-37.8%							7,342	12,371	-40.7%
287-SAGA BAY MAX	86	313	-72.6%							1,798	6,885	-73.9%
297-27th AVENUE ORANGE MAX	621	1,130	-45.0%							13,051	24,863	-47.5%
<b>Subtotal Limited Stop (MAX) Routes</b>	<b>7,774</b>	<b>14,976</b>	<b>-48.1%</b>	<b>3,112</b>	<b>4,981</b>	<b>-37.5%</b>	<b>1,770</b>	<b>3,553</b>	<b>-50.2%</b>	<b>187,656</b>	<b>368,590</b>	<b>-49.1%</b>
<b>Percentage of All Bus Routes</b>	<b>8.7%</b>	<b>9.8%</b>		<b>5.0%</b>	<b>5.4%</b>		<b>3.9%</b>	<b>5.0%</b>		<b>7.7%</b>	<b>9.0%</b>	
<b>Free Route</b>												
132 - TRI-RAIL DORAL	10	3	196.8%							204	72	183.3%
<b>Percentage of All Bus Routes</b>	<b>0.0%</b>	<b>0.0%</b>								<b>0.0%</b>	<b>0.0%</b>	
<b>Contractor-Operated Lifeline Routes</b>												
GREEN HILLS SHUTTLE	5	6	-23.2%							24	25	-4.0%
KINGS CREEK SHUTTLE	4	22	-80.9%							17	111	-84.7%
SIERRA LAKES SHUTTLE	19	21	-11.6%							75	106	-29.2%
ROBERT SHARP SHUTTLE	22	4	528.6%							88	14	528.6%
AHEPA SHUTTLE	19	27	-28.7%							77	135	-43.0%
FEDERATION GARDENS SHUTTLE				23	53	-56.7%				114	263	-56.7%
<b>Subtotal Contractor-Operated Lifeline Routes</b>	<b>69</b>	<b>80</b>	<b>-13.8%</b>	<b>23</b>	<b>53</b>	<b>-56.7%</b>				<b>395</b>	<b>654</b>	<b>-39.6%</b>
<b>Percentage of All Bus Routes</b>	<b>0.1%</b>	<b>0.1%</b>		<b>0.0%</b>	<b>0.1%</b>		<b>0.0%</b>	<b>0.0%</b>		<b>0.0%</b>	<b>0.0%</b>	
<b>Other Circulator Route</b>												
200-CUTLER BAY LOCAL	71	146	-51.3%	51	129	-60.5%	32	52		1,909	4,065	-53.0%
<b>Percentage of All Bus Routes</b>	<b>0.1%</b>	<b>0.1%</b>		<b>0.1%</b>	<b>0.1%</b>		<b>0.1%</b>			<b>0.1%</b>	<b>0.1%</b>	
<b>All Other (Regular) Routes</b>	<b>75,438</b>	<b>121,425</b>	<b>-37.9%</b>	<b>55,406</b>	<b>81,280</b>	<b>-31.8%</b>	<b>40,911</b>	<b>62,474</b>	<b>-34.5%</b>	<b>2,065,792</b>	<b>3,327,657</b>	<b>-37.9%</b>
<b>Percentage of All Bus Routes</b>	<b>84.0%</b>	<b>79.2%</b>		<b>89.5%</b>	<b>88.8%</b>		<b>89.7%</b>	<b>88.5%</b>		<b>85.3%</b>	<b>81.0%</b>	
<b>Total Bus System (1)</b>	<b>89,785</b>	<b>153,291</b>	<b>-41.4%</b>	<b>61,927</b>	<b>91,569</b>	<b>-32.4%</b>	<b>45,612</b>	<b>70,575</b>	<b>-35.4%</b>	<b>2,422,014</b>	<b>4,109,613</b>	<b>-41.1%</b>

(1) Includes shuttles and those routes which were not run both years; averages rounded to the nearest boarding..

(\*) The following routes are entirely operated under contract: 1, 29, 35, 39, 46, 56, 71, 72, 82, 101-A, 115, 155, 202, 210, 211, 212, 217, 248, 254, 267, 272, 286 and 344, although some supplemental runs may be performed by DTPW.

Conversely, a few routes that are nominally run by DTPW may have a few supplemental runs operated by contractors; Dade-Monroe routes 301 and 302 as well as six Lifeline routes are also under contracted operation.

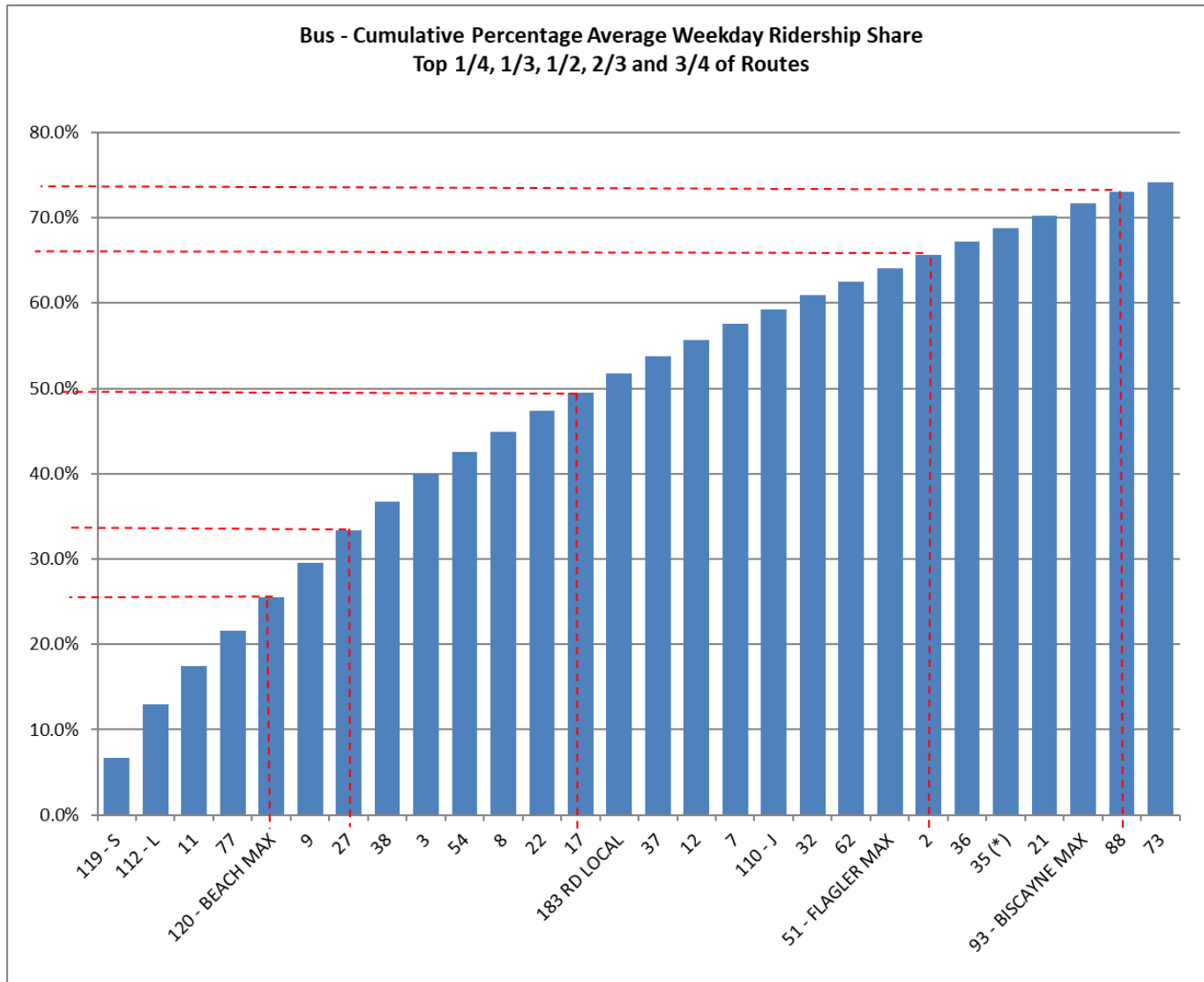
Several express routes were suspended at the end of March or the beginning of April 2020, due to the SARS-CoV-2 pandemic, while other routes had alignment and schedule modifications made to them, in an ongoing effort to optimize service delivery.

## Bus Routes as Ranked by Percentage of Average Weekday Ridership

Rank	Route	Average Weekday	Percent Share	Cumul Pct Share	Rank	Route	Average Weekday	Percent Share	Cumul Pct Share	Rank	Route	Average Weekday	Percent Share	Cumul Pct Share
1	119	6,027	6.7%	6.7%	36	207	803	0.9%	82.2%	71	101	88	0.1%	99.1%
2	112	5,649	6.3%	13.0%	37	33	802	0.9%	83.1%	72	287	86	0.1%	99.2%
3	11	3,940	4.4%	17.4%	38	99	799	0.9%	84.0%	73	267	79	0.1%	99.3%
4	77	3,769	4.2%	21.6%	39	150	748	0.8%	84.8%	74	248	73	0.1%	99.4%
5	120	3,556	4.0%	25.6%	40	105	724	0.8%	85.6%	75	200	71	0.1%	99.5%
6	9	3,553	4.0%	29.5%	41	301	715	0.8%	86.4%	76	136	64	0.1%	99.5%
7	27	3,437	3.8%	33.3%	42	19	707	0.8%	87.2%	77	217	64	0.1%	99.6%
8	38	3,056	3.4%	36.7%	43	34	694	0.8%	88.0%	78	344	50	0.1%	99.7%
9	3	2,951	3.3%	40.0%	44	107	693	0.8%	88.8%	79	302	47	0.1%	99.7%
10	54	2,250	2.5%	42.5%	45	52	655	0.7%	89.5%	80	211	39	0.0%	99.8%
11	8	2,174	2.4%	45.0%	46	87	641	0.7%	90.2%	81	155	31	0.0%	99.8%
12	22	2,130	2.4%	47.3%	47	75	630	0.7%	90.9%	82	82	29	0.0%	99.8%
13	17	1,981	2.2%	49.5%	48	297	621	0.7%	91.6%	83	RS	22	0.0%	99.9%
14	183	1,955	2.2%	51.7%	49	103	603	0.7%	92.3%	84	286	21	0.0%	99.9%
15	37	1,801	2.0%	53.7%	50	135	572	0.6%	92.9%	85	AS	19	0.0%	99.9%
16	12	1,749	1.9%	55.7%	51	42	536	0.6%	93.5%	86	46	19	0.0%	99.9%
17	7	1,659	1.8%	57.5%	52	252	448	0.5%	94.0%	87	SL	19	0.0%	99.9%
18	110	1,546	1.7%	59.2%	53	113	441	0.5%	94.5%	88	254	16	0.0%	100.0%
19	32	1,496	1.7%	60.9%	54	31	401	0.4%	94.9%	89	212	12	0.0%	100.0%
20	62	1,447	1.6%	62.5%	55	108	363	0.4%	95.3%	90	132	10	0.0%	100.0%
21	51	1,417	1.6%	64.1%	56	277	350	0.4%	95.7%	91	246	6	0.0%	100.0%
22	2	1,406	1.6%	65.7%	57	72	337	0.4%	96.1%	92	GH	5	0.0%	100.0%
23	36	1,401	1.6%	67.2%	58	71	305	0.3%	96.4%	93	KC	4	0.0%	100.0%
24	35	1,360	1.5%	68.7%	59	95	294	0.3%	96.8%	94	500	2	0.0%	100.0%
25	21	1,349	1.5%	70.2%	60	29	272	0.3%	97.1%					
26	93	1,296	1.4%	71.7%	61	57	229	0.3%	97.3%					
27	88	1,202	1.3%	73.0%	62	104	213	0.2%	97.6%					
28	73	1,053	1.2%	74.2%	63	272	208	0.2%	97.8%					
29	10	1,041	1.2%	75.3%	64	115	202	0.2%	98.0%					
30	24	1,024	1.1%	76.5%	65	210	181	0.2%	98.2%					
31	16	925	1.0%	77.5%	66	1	178	0.2%	98.4%					
32	208	894	1.0%	78.5%	67	238	177	0.2%	98.6%					
33	102	855	1.0%	79.5%	68	56	135	0.1%	98.8%					
34	137	841	0.9%	80.4%	69	39	123	0.1%	98.9%					
35	40	816	0.9%	81.3%	70	202	104	0.1%	99.0%					
Total Boardings		89,785	100.0%	Contracted (1)										

(1) Includes the five Lifeline Shuttles that operate on weekdays: Ahepa, Green Hills, Kings Creek, Robert Sharp and Sierra Lakes.

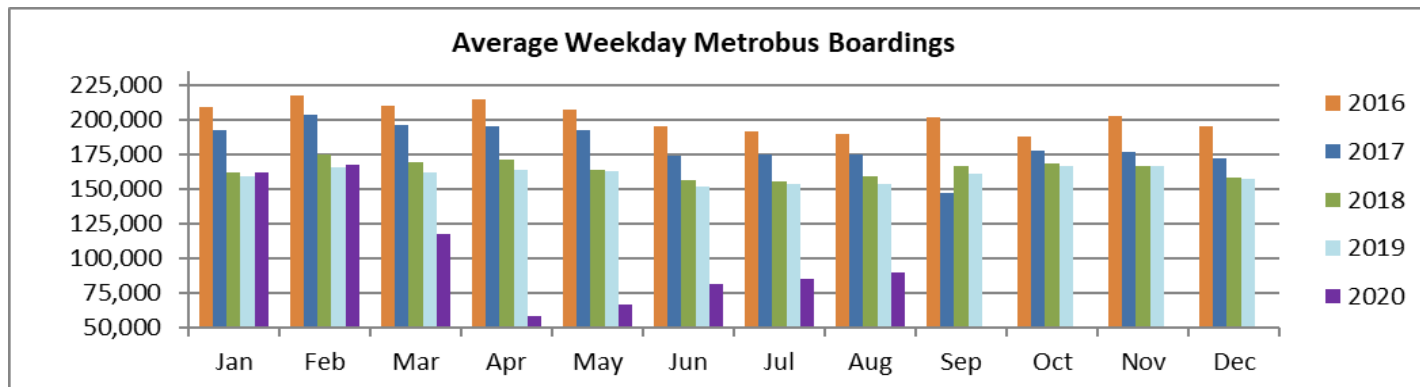
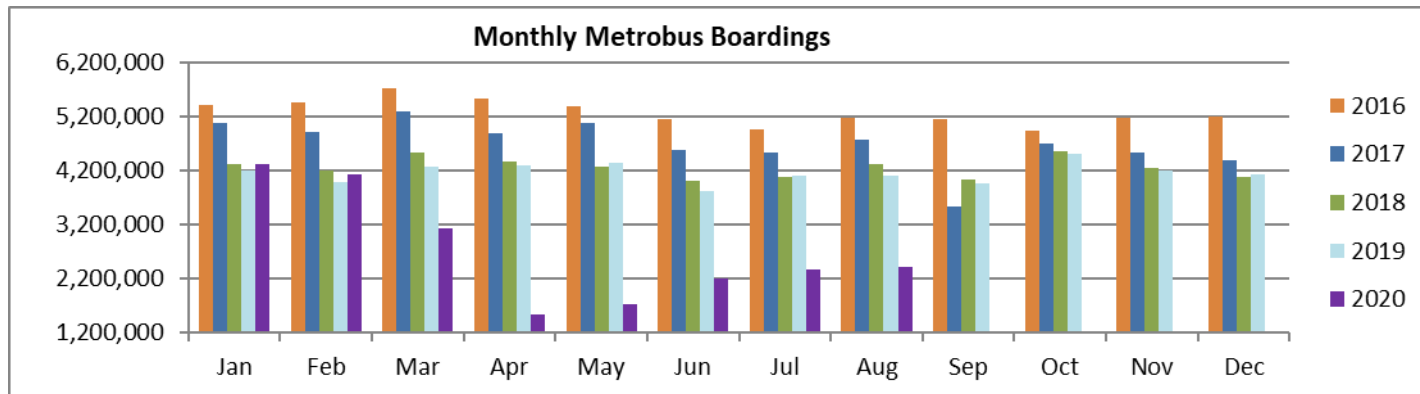
## METROBUS CUMULATIVE PERCENTAGE RIDERSHIP SHARE BY ROUTE (TOP 75%)



(\*) Route entirely run by contractor

August 2020

# **TOTAL MONTHLY AND AVERAGE WEEKDAY RIDERSHIP YEAR OVER YEAR COMPARISON CHARTS – METROBUS**



**“TOP 5 / BOTTOM 5” BUS ROUTES AVERAGE WEEKDAY RIDERSHIP PERFORMANCE  
YEAR OVER YEAR COMPARISONS**

Route	Aug-20	Aug-19	Absolute Delta (1)	Percent Delta (2)
<b>103 - C</b>	603	420	183	43.7%
<b>115 (*)</b>	202	136	66	49.0%
<b>217 - BUNCHE PARK CIRC (*)</b>	64	54	10	17.9%
<b>132 TRI-RAIL (DORAL)</b>	10	3	6	196.8%
<b>254 - BROWNSVILLE CIRC. (*)</b>	16	15	1	6.0%
<b>77</b>	3,769	6,838	-3,069	-44.9%
<b>38</b>	3,056	6,013	-2,957	-49.2%
<b>11</b>	3,940	6,758	-2,818	-41.7%
<b>27</b>	3,437	6,248	-2,811	-45.0%
<b>120 - BEACH MAX</b>	3,556	6,126	-2,570	-41.9%

(1) Averages rounded to the nearest boarding;

(2) As a result of the SARS-CoV-2 pandemic, rides were fare-free beginning March 22, 2020.

(\*) Contracted routes



# METROBUS PARKING PATRONAGE SUMMARY

## August 2020

PARK-RIDE LOT	ACTUAL AVAILABLE SPACES	ACTUAL OCCUPANCY	PERCENT OCCUPANCY
Transitway / SW 152nd St	200	34	17%
Transitway / SW 168th St	149	27	18%
Transitway / SW 200th Street (effective February 2020)	100	3	3%
Transitway / SW 112 Ave (Target)	450	38	8%
Transitway / SW 244th St	95	9	9%
Transitway / SW 296th St	139	29	21%
Transitway / SW 344th St	248	87	35%
Coral Reef Drive 117/ Turnpike	95	42	44%
Golden Glades - East Lot	535	109	20%
Golden Glades - West Lot	1,007	86	9%
Hammocks Town Center (SW 152 Ave / SW 104 St)	50	0	0%
Kendall Dr./SW 127th Ave	161	4	2%
West Kendall Transit Term (Kendall Dr / SW162 Ave)	40	3	8%
NW 7th Avenue Transit Village (NW 7 Ave / NW 62 St)	25	19	76%
Miami Gardens Dr. / NW 73rd Ave	136	11	8%
Dolphin Station (effective Mar 2020)	348	2	1%
I-75 / Miami Gardens Dr (effective June 2019)	298	0	0%
<b>TOTAL</b>	<b>4,076</b>	<b>503</b>	<b>12%</b>

(\*) Note: Inaccuracies due to ongoing construction as of March 1, 2019

Note: some park-ride lots are joint-use and the number of park-ride vehicles may exceed the number of spaces allocated.

# Metrorail



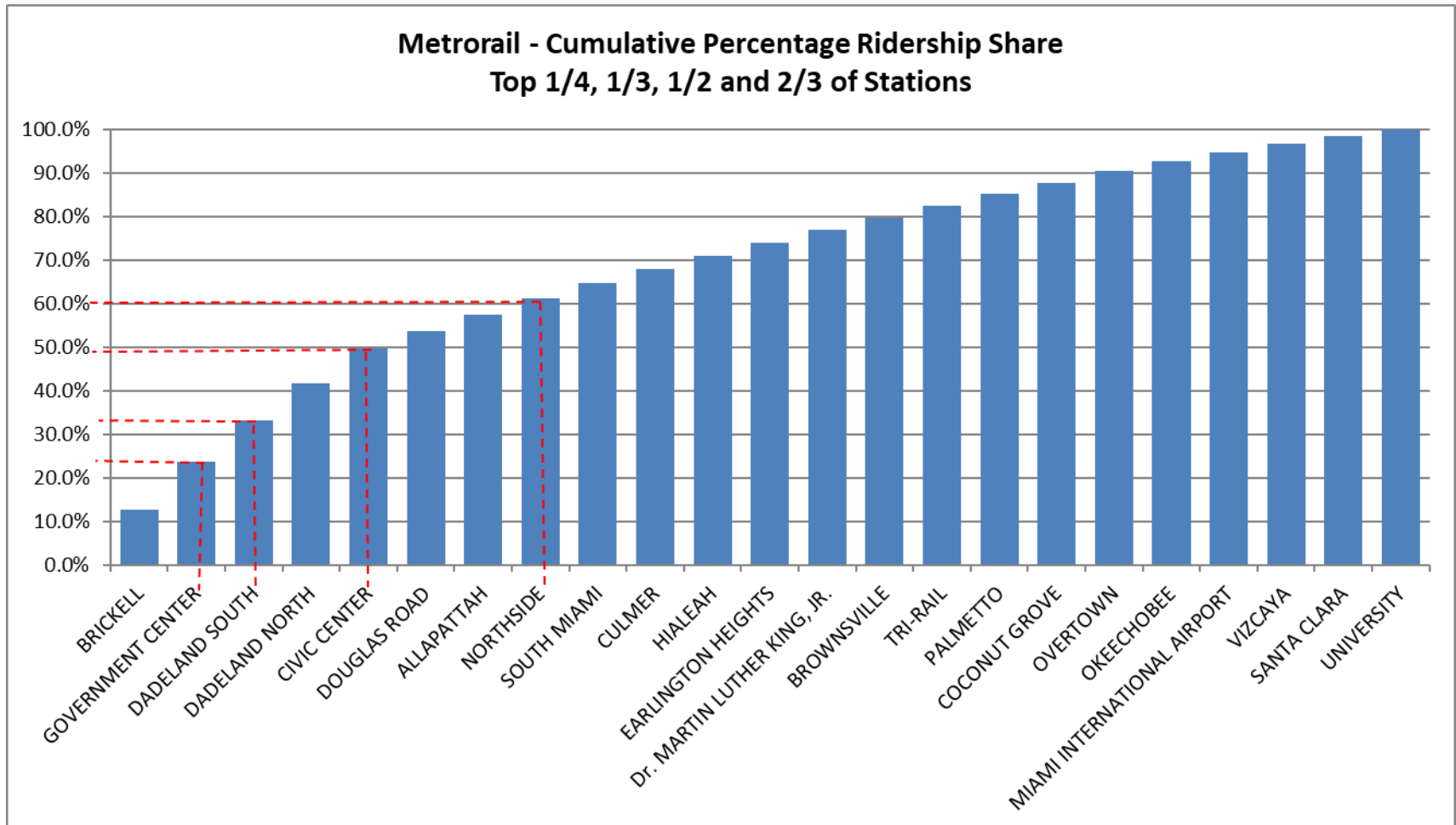
August 2020

## METRORAIL MONTHLY AND AVERAGE DAILY BOARDINGS BY STATION

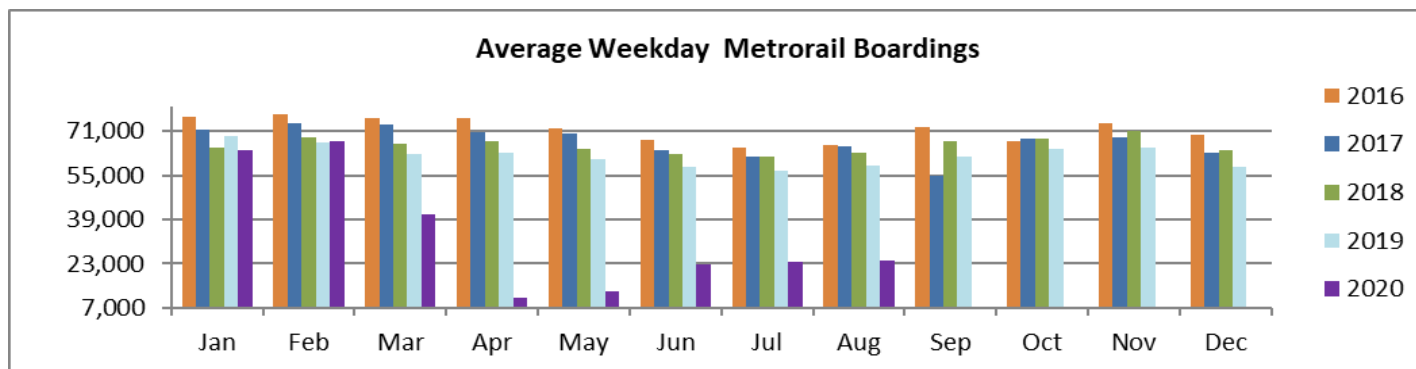
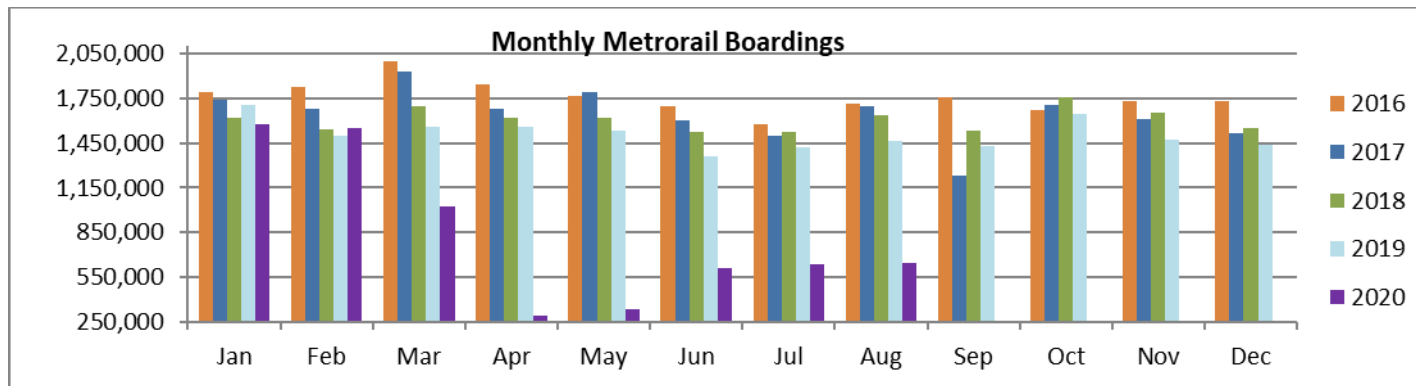
	Average Weekday	Average Weekday	Percent Change	Average Saturday	Average Saturday	Percent Change	Average Sunday	Average Sunday	Percent Change	Total Monthly	Total Monthly	Percent Change
STATIONS	Aug-20	Aug-19	20 vs 19	Aug-20	Aug-19	20 vs 19	Aug-20	Aug-19	20 vs 19	Aug-20	Aug-19	20 vs 19
ALLAPATTAH	933	1,671	-44.2%	641	856	-25.2%	450	630	-28.6%	25,037	43,550	-42.5%
BRICKELL	3,044	5,846	-47.9%	1,858	2,255	-17.6%	1,611	1,812	-11.1%	81,276	147,140	-44.8%
BROWNSVILLE	671	786	-14.6%	514	482	6.6%	426	382	11.6%	18,792	21,221	-11.4%
CIVIC CENTER	1,915	5,546	-65.5%	525	791	-33.6%	455	677	-32.8%	45,115	128,682	-64.9%
COCONUT GROVE	639	1,472	-56.6%	415	700	-40.7%	385	561	-31.5%	17,406	38,134	-54.4%
CULMER	782	1,129	-30.7%	525	590	-11.1%	434	473	-8.2%	21,223	29,681	-28.5%
DADELAND NORTH	2,066	5,335	-61.3%	1,187	1,625	-27.0%	884	1,264	-30.0%	53,746	130,550	-58.8%
DADELAND SOUTH	2,313	6,414	-63.9%	1,474	2,242	-34.3%	1,180	1,732	-31.8%	61,835	159,249	-61.2%
DOUGLAS ROAD	966	3,034	-68.1%	659	1,079	-38.9%	443	797	-44.4%	25,804	75,332	-65.7%
DR. MARTIN LUTHER KING, JR.	714	1,039	-31.2%	512	540	-5.2%	377	420	-10.2%	19,440	27,229	-28.6%
EARLINGTON HEIGHTS	722	1,461	-50.6%	514	833	-38.3%	383	678	-43.5%	19,639	39,009	-49.7%
GOVERNMENT CENTER	2,693	8,881	-69.7%	1,640	3,041	-46.1%	1,343	2,379	-43.6%	71,472	220,103	-67.5%
HIALEAH	743	1,157	-35.8%	454	540	-15.9%	316	398	-20.6%	19,453	29,733	-34.6%
MIAMI INTERNATIONAL AIRPORT	518	1,510	-65.7%	450	1,108	-59.4%	483	1,076	-55.1%	15,550	43,067	-63.9%
NORTHSIDE	873	1,304	-33.1%	655	802	-18.3%	512	654	-21.7%	24,167	35,320	-31.6%
OKEECHOBEE	532	1,065	-50.1%	284	337	-15.8%	184	239	-22.8%	13,509	26,079	-48.2%
OVERTOWN/ ARENA	635	2,010	-68.4%	348	454	-23.5%	387	369	4.9%	17,012	47,965	-64.5%
PALMETTO	657	1,356	-51.6%	287	354	-18.8%	219	217	0.6%	16,325	32,479	-49.7%
SANTA CLARA	433	660	-34.4%	283	345	-18.2%	191	207	-7.6%	11,453	17,064	-32.9%
SOUTH MIAMI	864	2,586	-66.6%	557	975	-42.9%	430	714	-39.7%	23,081	64,626	-64.3%
TRI-RAIL	658	1,034	-36.3%	373	481	-22.3%	310	425	-26.9%	17,244	26,854	-35.8%
UNIVERSITY	383	2,196	-82.5%	212	527	-59.8%	177	377	-53.1%	9,994	52,449	-80.9%
VIZCAYA	479	1,101	-56.5%	289	487	-40.6%	239	371	-35.7%	12,702	28,130	-54.8%
<b>TOTAL</b>	<b>24,234</b>	<b>58,592</b>	<b>-58.6%</b>	<b>14,654</b>	<b>21,445</b>	<b>-31.7%</b>	<b>11,817</b>	<b>16,850</b>	<b>-29.9%</b>	<b>641,275</b>	<b>1,463,646</b>	<b>-56.2%</b>

(†) All Metrorail stations reported net losses in August 2020 average weekday ridership, due to effects on ridership from the SARS-CoV-2 pandemic; rides were fare-free beginning March 22, 2020.

## METRORAIL CUMULATIVE PERCENTAGE RIDERSHIP SHARE



# **TOTAL MONTHLY AND AVERAGE WEEKDAY RIDERSHIP YEAR OVER YEAR COMPARISON CHARTS – METRORAIL**



**“TOP 5 / BOTTOM 5” RAIL STATIONS AVERAGE WEEKDAY RIDERSHIP PERFORMANCE  
YEAR OVER YEAR COMPARISONS**

<b>Station</b>	<b>Aug-20</b>	<b>Aug-19</b>	<b>Absolute Delta (1)</b>	<b>Percent Delta</b>
BROWNSVILLE	671	786	-114	-14.6%
SANTA CLARA	433	660	-227	-34.4%
Dr. MARTIN LUTHER KING, JR.	714	1,039	-324	-31.2%
CULMER	782	1,129	-347	-30.7%
TRI-RAIL	658	1,034	-376	-36.3%
GOVERNMENT CENTER	2,693	8,881	-6,188	-69.7%
DADELAND SOUTH	2,313	6,414	-4,102	-63.9%
CIVIC CENTER	1,915	5,546	-3,631	-65.5%
DADELAND NORTH	2,066	5,335	-3,269	-61.3%
BRICKELL	3,044	5,846	-2,802	-47.9%

(1) Averages rounded to the nearest boarding.

(†) All Metrorail stations reported net losses in August 2020, due to effects on ridership from the SARS-CoV-2 pandemic.

# METRORAIL PARKING PATRONAGE SUMMARY

## August 2020

PARK-RIDE LOT	ACTUAL CAPACITY (1)	ACTUAL OCCUPANCY (2)	PERCENT OCCUPANCY
DADELAND SOUTH	1,280		
DADELAND NORTH	1,963		
SOUTH MIAMI	1,081		
UNIVERSITY	260		
DOUGLAS ROAD	150		
COCONUT GROVE	100		
VIZCAYA	120		
CULMER	40		
SANTA CLARA	61		
ALLAPATTAH	74		
EARLINGTON HEIGHTS	361		
BROWNSVILLE	100		
DR. MARTIN LUTHER KING JR. (MDT)	62		
DR. MARTIN LUTHER KING JR. (GARAGE)	631		
NORTHSIDE	197		
HIALEAH	338		
OKEECHOBEE	1,398		
PALMETTO	700		
<b>TOTAL</b>	<b>8,916</b>		

(1) Number of spaces could vary each week; shown are available spaces during final week of month.

(2) Averages rounded to nearest unit; no counts effected in August 2020 due to reassignment of staff as result of SARS-CoV-2 pandemic.

## Metromover



August 2020

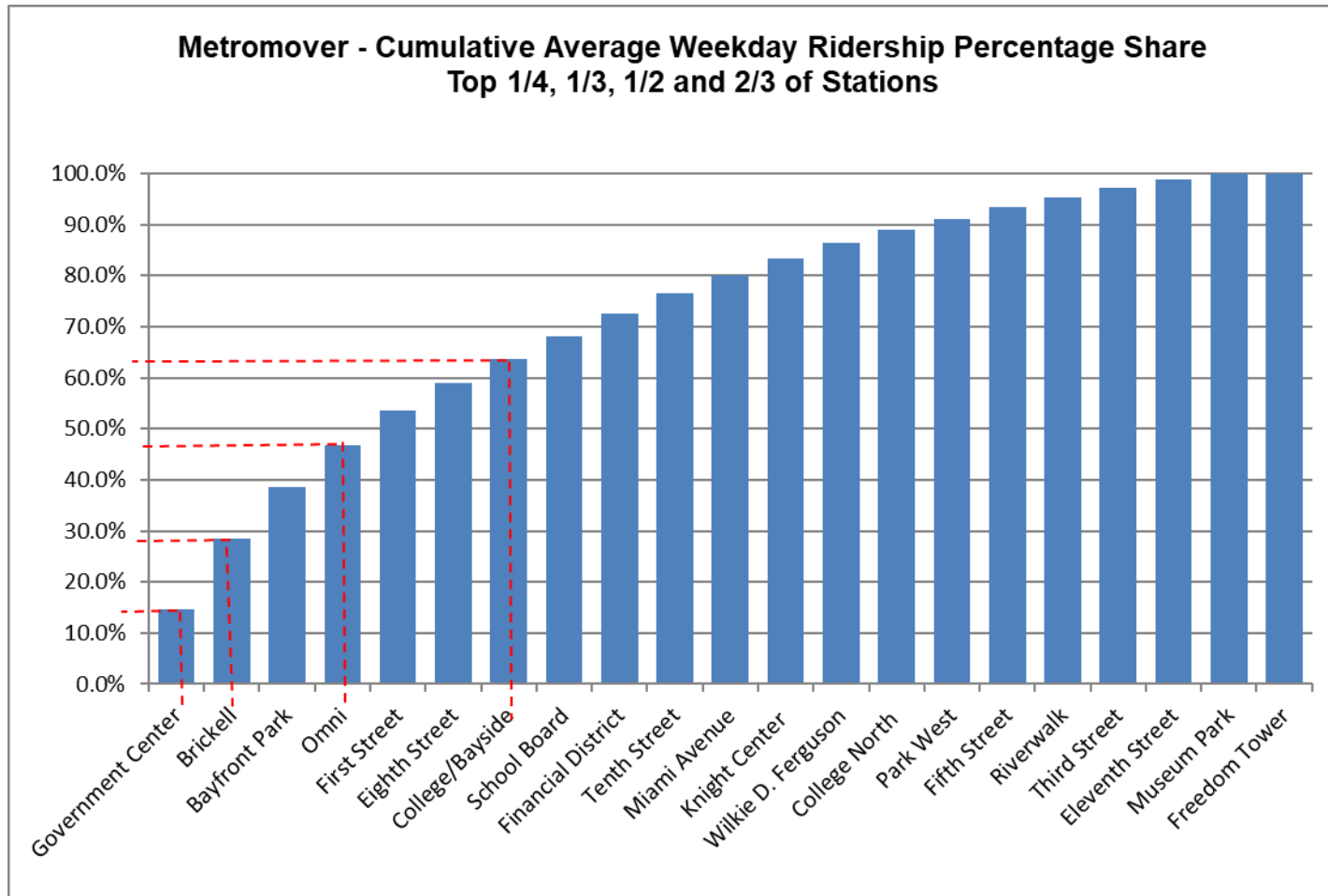


## METROMOVER MONTHLY AND AVERAGE DAILY BOARDINGS BY STATION

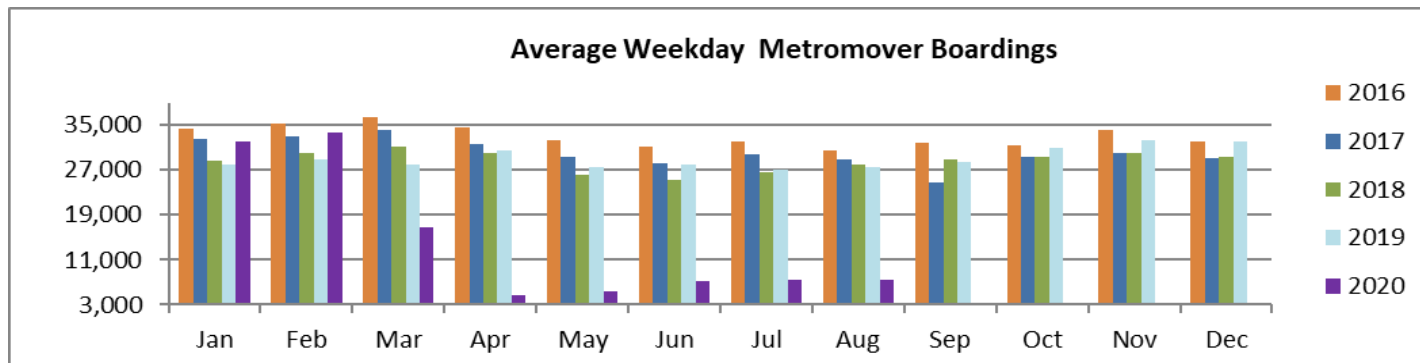
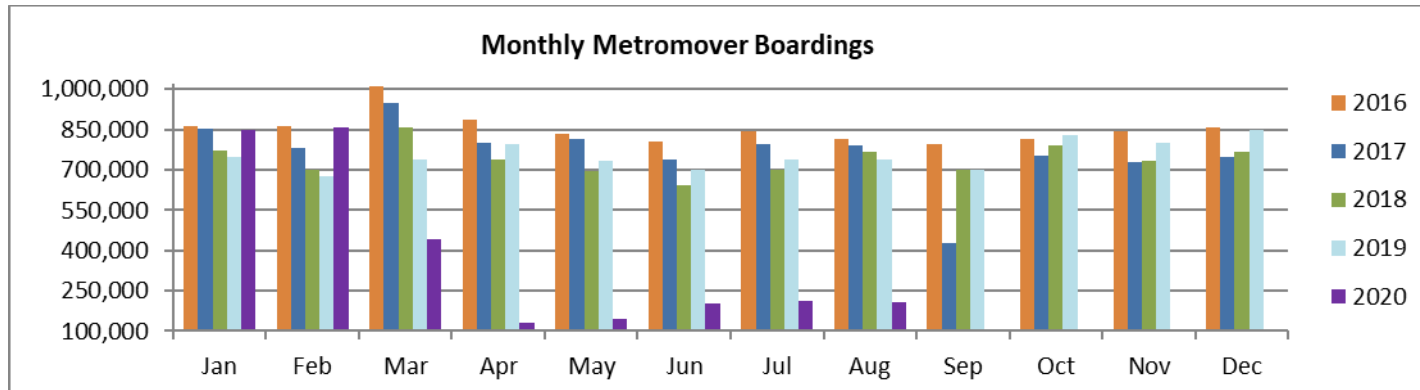
	Average Weekday	Average Weekday	Percent Change	Average Saturday	Average Saturday	Percent Change	Average Sunday	Average Sunday	Percent Change	Total Monthly	Total Monthly	Percent Change
STATIONS	Aug-20	Aug-19	20 vs 19	Aug-20	Aug-19	20 vs 19	Aug-20	Aug-19	20 vs 19	Aug-20	Aug-19	20 vs 19
School Board	335	764	-56.2%	266	614	-56.7%	237	523	-54.7%	9,544	21,961	-56.5%
Omni	607	1,648	-63.1%	464	1,301	-64.3%	419	1,017	-58.8%	17,169	46,817	-63.3%
Museum Park	80	187	-57.5%	75	225	-66.7%	68	220	-69.0%	2,386	6,119	-61.0%
Eleventh Street	128	259	-50.7%	70	237	-70.4%	65	195	-66.9%	3,358	7,673	-56.2%
Park West	171	316	-45.8%	103	228	-54.8%	99	156	-36.2%	4,610	8,722	-47.1%
Freedom Tower (1)		361			334			197			10,409	
Government Center	1,070	6,554	-83.7%	863	1,945	-55.6%	702	1,546	-54.6%	30,300	160,085	-81.1%
Miami Avenue	269	480	-44.0%	202	329	-38.6%	170	240	-29.1%	7,505	13,164	-43.0%
Third Street	135	317	-57.4%	101	232	-56.6%	86	168	-48.5%	3,772	8,802	-57.1%
Knight Center	239	1,002	-76.1%	155	472	-67.1%	120	403	-70.3%	6,393	26,010	-75.4%
Bayfront Park	753	3,011	-75.0%	622	2,043	-69.6%	528	1,787	-70.4%	21,561	83,601	-74.2%
First Street	502	1,402	-64.2%	291	1,067	-72.8%	254	970	-73.8%	13,259	40,047	-66.9%
College/Bayside	342	1,805	-81.1%	251	1,436	-82.5%	227	1,220	-81.4%	9,570	51,767	-81.5%
College North	176	765	-77.0%	102	274	-62.9%	69	203	-65.7%	4,553	19,007	-76.0%
Wilkie D. Ferguson	231	471	-51.0%	199	296	-32.6%	157	233	-32.8%	6,629	12,779	-48.1%
Riverwalk	148	769	-80.8%	98	453	-78.3%	78	368	-78.8%	3,979	20,664	-80.7%
Fifth Street	158	467	-66.2%	116	270	-57.1%	70	210	-66.5%	4,243	12,460	-65.9%
Eighth Street	390	2,106	-81.5%	314	1,663	-81.1%	243	1,281	-81.0%	10,976	59,763	-81.6%
Tenth Street	295	245	20.8%	218	166	31.5%	167	133	25.8%	8,127	6,740	20.6%
Brickell	1,022	3,456	-70.4%	874	2,084	-58.0%	776	1,753	-55.7%	29,718	93,452	-68.2%
Financial District	317	1,144	-72.3%	186	491	-62.1%	151	530	-71.4%	8,343	29,743	-71.9%
<b>TOTAL</b>	<b>7,367</b>	<b>27,527</b>	<b>-73.2%</b>	<b>5,569</b>	<b>16,160</b>	<b>-65.5%</b>	<b>4,688</b>	<b>13,348</b>	<b>-64.9%</b>	<b>205,995</b>	<b>739,785</b>	<b>-72.2%</b>

(1) Freedom Tower Station was closed for construction throughout August 2020.

## METROMOVER CUMULATIVE PERCENTAGE RIDERSHIP SHARE



# **TOTAL MONTHLY AND AVERAGE WEEKDAY RIDERSHIP YEAR OVER YEAR COMPARISON CHARTS – METROMOVER**



**“TOP 5 / BOTTOM 5” MOVER STATIONS AVERAGE WEEKDAY RIDERSHIP PERFORMANCE  
YEAR OVER YEAR COMPARISONS**

<b>Station</b>	<b>Aug-20</b>	<b>Aug-19</b>	<b>Absolute Delta (1)</b>	<b>Percent Delta</b>
Tenth Street	295	245	51	20.8%
Museum Park	80	187	-107	-57.5%
Eleventh Street	128	259	-132	-50.7%
Park West	171	316	-145	-45.8%
Third Street	135	317	-182	-57.4%

Government Center	1,070	6,554	-5,483	-83.7%
Brickell	1,022	3,456	-2,433	-70.4%
Bayfront Park	753	3,011	-2,258	-75.0%
Eighth Street	390	2,106	-1,716	-81.5%
College/Bayside	342	1,805	-1,463	-81.1%

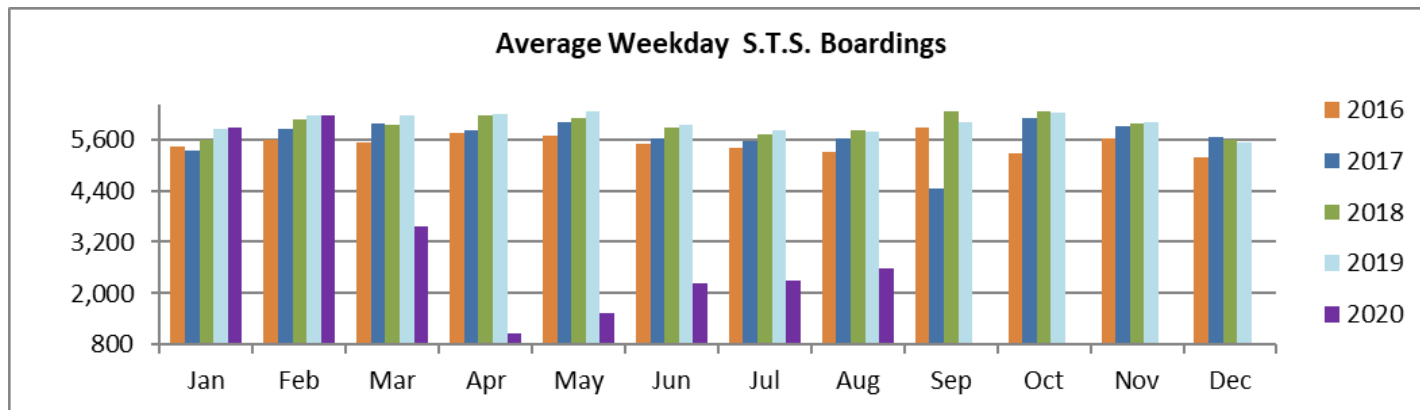
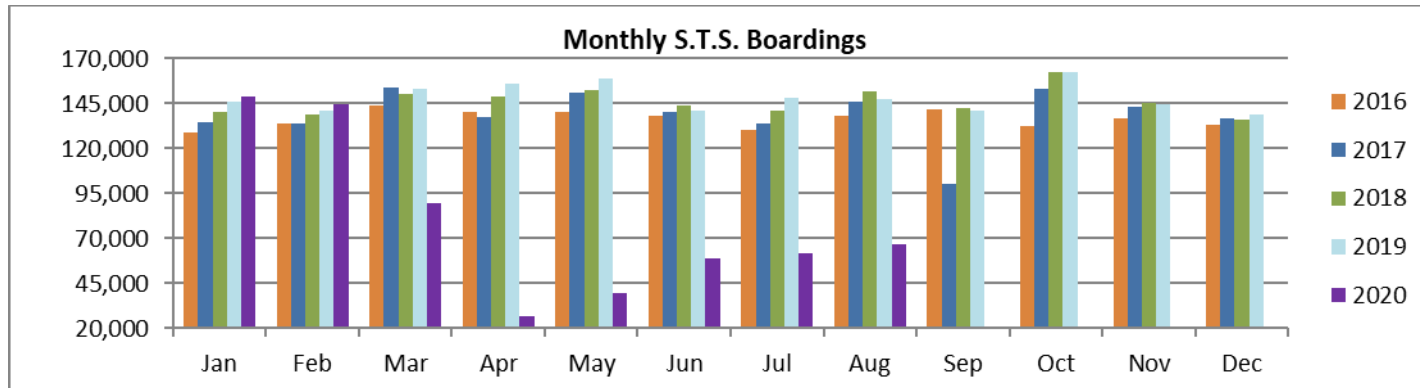
(1) Averages rounded to the nearest boarding.

(†) All but one Metromover stations reported net losses in August 2020, due to effects on ridership from the SARS-CoV-2 pandemic.

## Special Transportation Services



# **TOTAL MONTHLY AND AVERAGE WEEKDAY RIDERSHIP YEAR OVER YEAR COMPARISON CHARTS – SPECIAL TRANSPORTATION SERVICES (S.T.S.)**

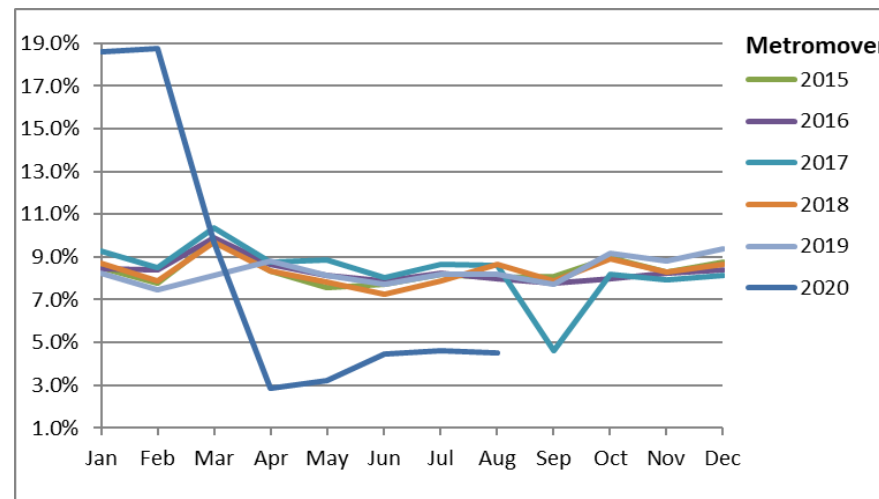
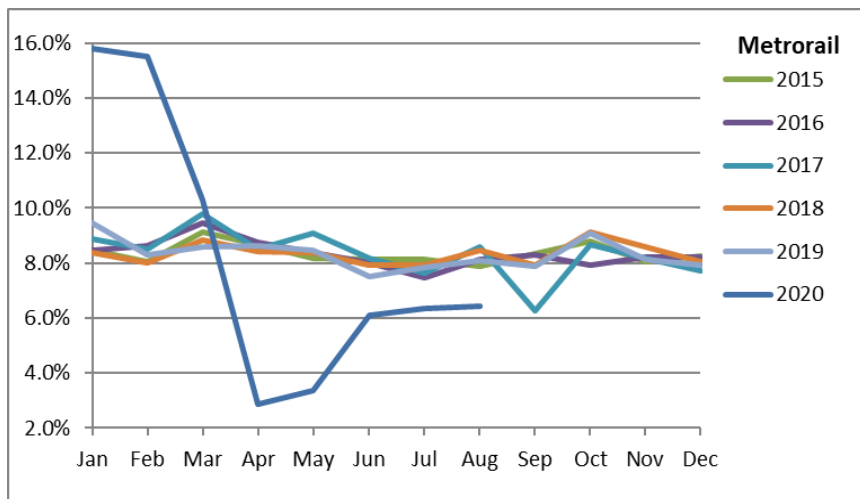
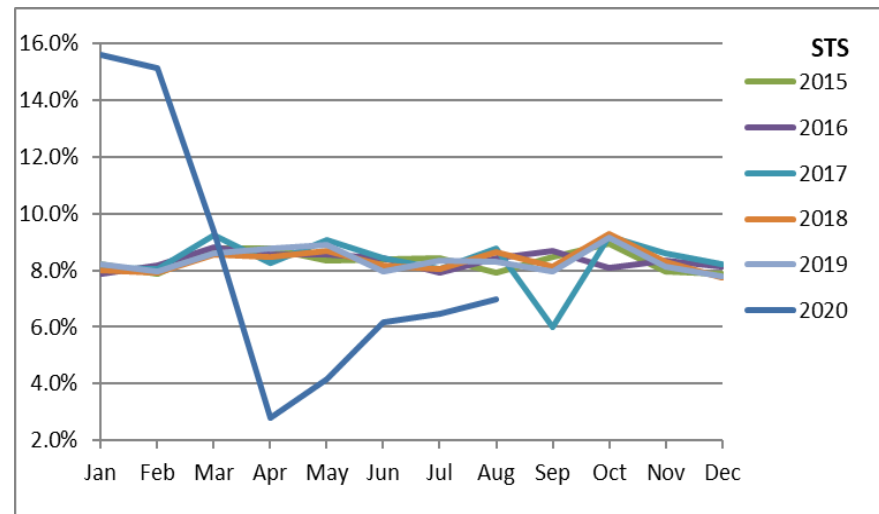
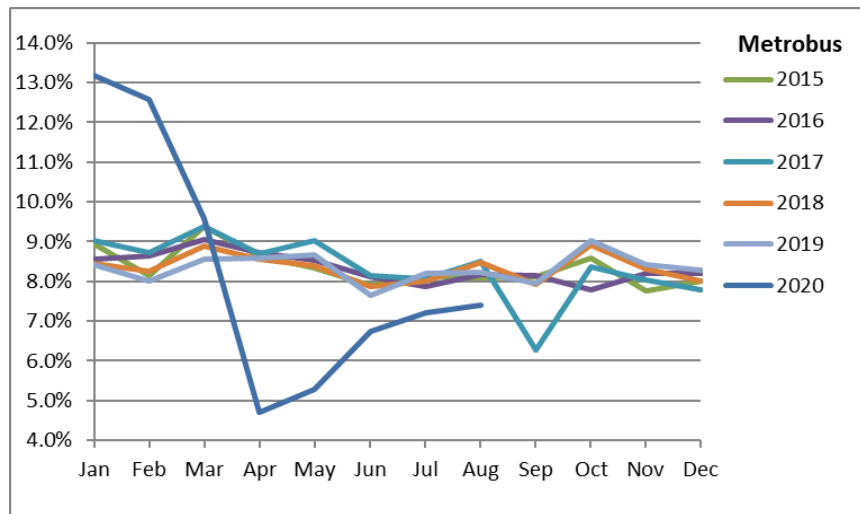




## Ridership Seasonality



## RIDERSHIP SEASONALITY – PERCENT RIDERSHIP SHARE BY MONTH AND CALENDAR YEAR FOR EACH MODE



Note: the prominent dips seen in the fall of 2017 and in the spring and summer of 2020 are due to Hurricane Irma and the SARS-CoV-2 pandemic, respectively.