



TRANSPORTATION AND PUBLIC WORKS

RIDERSHIP TECHNICAL REPORT

Division of Performance and Materials Management



September 2020

Table of Contents

<i>Table of Contents</i>	2-3
All Modes Overview	4
Total Monthly Weekday, Saturday and Sunday Monthly Boardings By Mode	5
Average Weekday, Saturday and Sunday Boardings by Mode	6
All-Modes Combined Total Monthly Ridership Comparisons By Fiscal Year	7
All Modes Combined Total Monthly and Average Weekday Ridership – Year over Year Comparison Charts	8
Metrobus Total Monthly Ridership Comparisons by Fiscal Year	9
Metrorail Total Monthly Ridership Comparisons by Fiscal Year	10
Metromover Total Monthly Ridership Comparisons by Fiscal Year	11
STS Total Monthly Ridership Comparisons by Fiscal Year	12
Average Weekday Ridership – Modal Splits	13
Metrobus	14
Monthly and Average Daily Bus Boardings by Route	15-18
Metrobus Holiday Boardings By Route	19
Bus Ridership by Service Type	20-21
Bus Routes as Ranked by Percentage of Average Weekday Ridership	22
Metrobus Cumulative Percentage Average Weekday Ridership Share by Route (Top 75%)	23
Total Monthly and Average Weekday Rail Ridership – Year over Year Comparison Charts	24

Table of Contents (continued)

Metrobus (Continued)

Bus “Top 5 / Bottom 5” Routes Average Weekday Ridership Performance 25

Metrobus Parking Patronage Summary 26

Metrorail 27

Monthly and Average Daily Rail Boardings by Station 28

Metrorail Holiday Boardings by Station 29

Metrorail Cumulative Percentage Average Weekday Ridership Share 30

Total Monthly and Average Weekday Rail Ridership – Year over Year Comparison Charts 31

“Top 5 / Bottom 5” Stations Average Weekday Ridership Performance 32

Metrorail Parking Patronage Summary 33

Metromover 34

Monthly and Average Daily Mover Boardings by Station 35

Metromover Cumulative Percentage Average Weekday Ridership Share 36

Total Monthly and Average Weekday Mover Ridership – Year over Year Comparison Charts 37

“Top 5 / Bottom 5” Stations Average Weekday Ridership Performance 38

Special Transportation Services (STS) 39

Total Monthly and Average Weekday STS Ridership – Year over Year Comparison Charts 40

Ridership Seasonality 41

Ridership Seasonality – Percent Ridership Share by Month and Calendar year for Each Mode 42

All Modes Overview



TOTAL MONTHLY WEEKDAY, SATURDAY AND SUNDAY BOARDINGS BY MODE September 2020

TRAVEL MODE	MONTH'S TOTAL WEEKDAYS RIDERSHIP (*)	MONTH'S TOTAL SATURDAYS RIDERSHIP	MONTH'S TOTAL SUNDAYS RIDERSHIP (*)	TOTAL MONTHLY RIDERSHIP	% CHANGE vs Sep 2019 TOTAL MONTH RIDERSHIP
METROBUS	2,092,775	249,604	204,544	2,546,923	-35.9%
METRORAIL	547,265	59,170	47,809	654,244	-54.2%
METROMOVER	172,906	24,687	22,103	219,696	-68.6%
STS	66,440	7,180	6,726	80,346	-43.2%
TOTAL	2,879,386	340,641	281,182	3,501,209	-43.9%

(*) September 7, 2020 (Labor Day Holiday) ridership was as follows:

Metrobus	61,596
Metrorail	14,752
Metromover	4,838
STS	1,650

Weekday ridership includes Labor Day for all modes except STS, for which Labor Day trips are included in Sunday ridership.

- (1) As a result of the SARS-CoV-2 pandemic, Metrobus rides became fare-free on March 22, 2020; consequently, NextFare System farebox data was replaced by bus automatic passenger counter data starting on that date.
- (2) As a result of the SARS-CoV-2 pandemic, Metrorail rides became fare-free on March 22, 2020; consequently, NextFare System faregate data was replaced manually-counted data and other estimates starting on that date.
- (3) Beginning March 13, 2020 (day of National Emergency Declaration due to SARS-CoV-2 pandemic), only raw data from Metromover automatic passenger counters is reported; no estimates are performed after March 13, 2020.
- (4) Paratransit ridership data as reported by the contractor.

AVERAGE WEEKDAY, SATURDAY AND SUNDAY BOARDINGS BY MODE
September 2020

Travel Mode	Average Weekday (*)	Average Saturday	Average Sunday (**)	% Change Sep 2019 Weekday	% Change Sep 2019 Saturday	% Change Sep 2019 Sunday
METROBUS	95,266	62,401	51,136	-40.8%	-31.4%	-21.3%
METRORAIL	25,358	14,793	11,952	-59.1%	-35.0%	-29.3%
METROMOVER	8,003	6,172	5,526	-71.8%	-61.3%	-55.3%
STS	3,164	1,795	1,345	-47.3%	-30.6%	-26.2%
Totals (1)	131,791	85,160	69,959	-48.8%	-35.6%	-27.2%

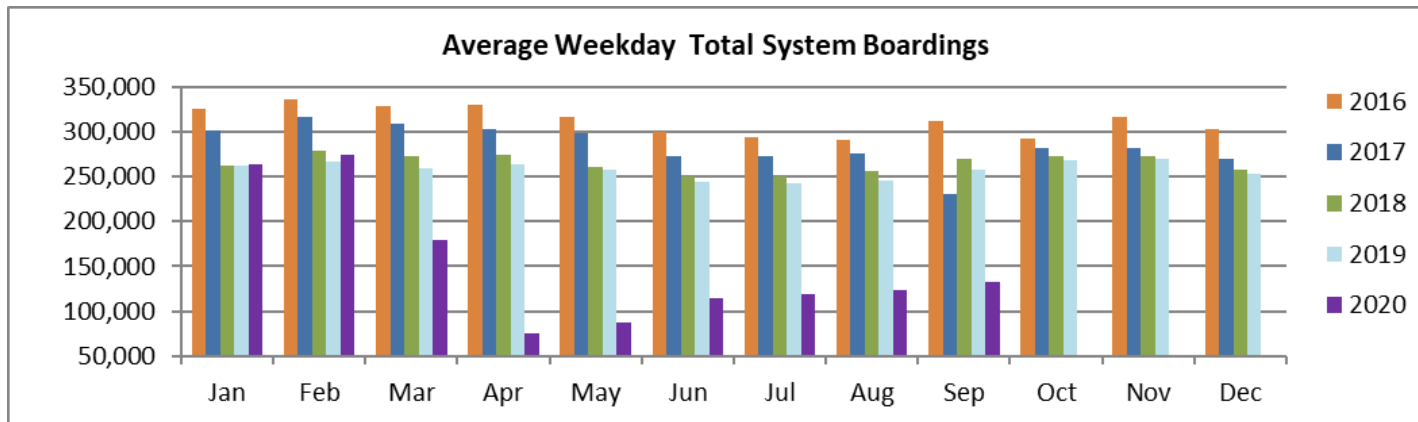
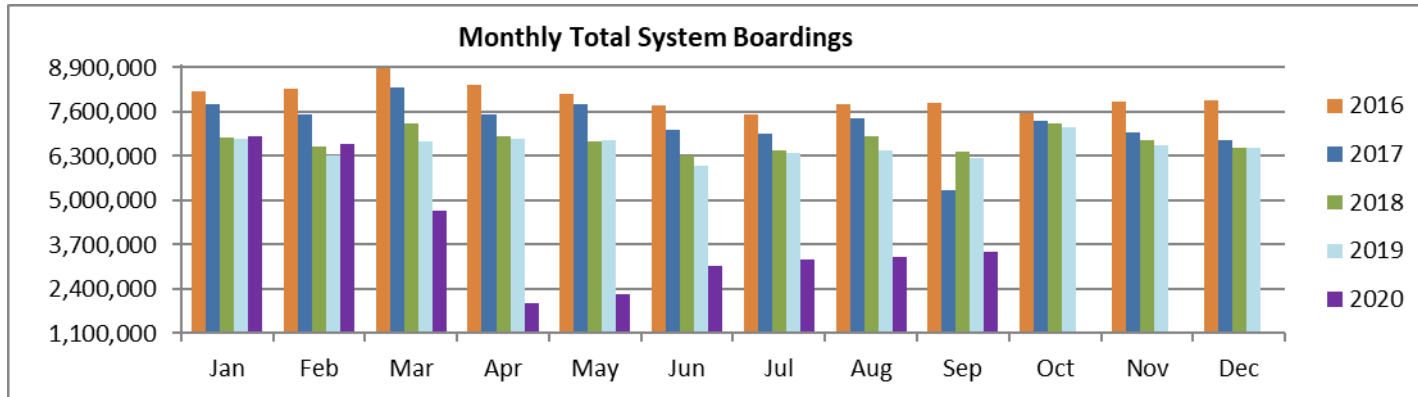
(*) Average weekday ridership includes Labor Day (9/7/20) for Metrobus, but excludes it for Metrorail and Metromover

(**) Average Sunday ridership includes Labor Day (9/7/20) for STS, but excludes it for Metrorail and Metromover

ALL-MODES COMBINED TOTAL MONTHLY RIDERSHIP COMPARISONS BY FISCAL YEAR

All Modes Month	Variances									
	FY 16	FY 17	FY 18	FY 19	FY 20	16 TO 17	17 TO 18	18 TO 19	19 TO 20	16 TO 20
Oct	9,035,169	7,543,706	7,322,886	7,265,208	7,144,116	-16.5%	-2.9%	-0.8%	-1.7%	-20.9%
Nov	8,204,872	7,894,500	7,005,032	6,783,315	6,610,671	-3.8%	-11.3%	-3.2%	-2.5%	-19.4%
Dec	8,461,341	7,919,860	6,783,192	6,538,734	6,549,392	-6.4%	-14.4%	-3.6%	0.2%	-22.6%
Jan	8,198,929	7,814,784	6,834,741	6,797,602	6,890,225	-4.7%	-12.5%	-0.5%	1.4%	-16.0%
Feb	8,286,466	7,505,125	6,591,531	6,312,033	6,671,991	-9.4%	-12.2%	-4.2%	5.7%	-19.5%
Mar	8,874,636	8,317,082	7,244,805	6,712,624	4,694,315	-6.3%	-12.9%	-7.3%	-30.1%	-47.1%
Apr	8,394,885	7,513,151	6,869,802	6,802,085	1,989,545	-10.5%	-8.6%	-1.0%	-70.8%	-76.3%
May	8,132,723	7,841,691	6,742,402	6,755,829	2,258,413	-3.6%	-14.0%	0.2%	-66.6%	-72.2%
Jun	7,778,787	7,069,455	6,318,979	6,026,467	3,082,213	-9.1%	-10.6%	-4.6%	-48.9%	-60.4%
Jul	7,520,144	6,969,807	6,449,526	6,402,110	3,272,074	-7.3%	-7.5%	-0.7%	-48.9%	-56.5%
Aug	7,836,923	7,408,607	6,879,929	6,460,375	3,335,847	-5.5%	-7.1%	-6.1%	-48.4%	-57.4%
Sep	7,848,211	5,284,604	6,412,945	6,240,212	3,501,209	-32.7%	21.4%	-2.7%	-43.9%	-55.4%
FY Total	98,573,086	89,082,372	81,455,770	79,096,594	56,000,011	-9.6%	-8.6%	-2.9%	-29.2%	-43.2%

TOTAL MONTHLY AND AVERAGE WEEKDAY RIDERSHIP YEAR OVER YEAR COMPARISON CHARTS – ALL MODES COMBINED



METROBUS TOTAL MONTHLY RIDERSHIP COMPARISONS BY FISCAL YEAR

Bus	Variance			Variance		Variance		Variance		Variance
	FY 16	FY 17	16 to 17	FY 18	17 to 18	FY 19	18 to 19	FY 20	19 to 20	16 to 20
Oct	6,058,615	4,925,781	-18.7%	4,709,590	-4.4%	4,554,886	-3.3%	4,507,012	-1.1%	-25.6%
Nov	5,483,456	5,181,524	-5.5%	4,522,250	-12.7%	4,245,535	-6.1%	4,197,225	-1.1%	-23.5%
Dec	5,642,424	5,192,692	-8.0%	4,380,099	-15.6%	4,081,581	-6.8%	4,126,990	1.1%	-26.9%
Jan	5,417,604	5,084,085	-6.2%	4,307,001	-15.3%	4,195,911	-2.6%	4,316,998	2.9%	-20.3%
Feb	5,467,632	4,914,307	-10.1%	4,208,811	-14.4%	3,994,019	-5.1%	4,123,083	3.2%	-24.6%
Mar	5,725,541	5,287,813	-7.6%	4,534,564	-14.2%	4,266,768	-5.9%	3,136,162	-26.5%	-45.2%
Apr	5,524,501	4,895,697	-11.4%	4,360,997	-10.9%	4,291,135	-1.6%	1,544,316	-64.0%	-72.0%
May	5,391,463	5,087,877	-5.6%	4,277,628	-15.9%	4,330,922	1.2%	1,734,609	-59.9%	-67.8%
Jun	5,141,601	4,586,556	-10.8%	4,009,340	-12.6%	3,823,863	-4.6%	2,210,725	-42.2%	-57.0%
Jul	4,970,953	4,539,259	-8.7%	4,080,664	-10.1%	4,094,906	0.3%	2,366,749	-42.2%	-52.4%
Aug	5,172,498	4,780,589	-7.6%	4,326,980	-9.5%	4,109,613	-5.0%	2,422,014	-41.1%	-53.2%
Sep	5,154,265	3,524,818	-31.6%	4,041,992	14.7%	3,971,220	-1.8%	2,546,923	-35.9%	-50.6%
FY Total	65,150,553	58,000,998	-11.0%	51,759,916	-10.8%	49,960,359	-3.5%	37,232,806	-25.5%	-42.9%

METRORAIL TOTAL MONTHLY RIDERSHIP COMPARISONS BY FISCAL YEAR

Rail			Variance			Variance			Variance		
	FY 16	FY 17	16 to 17	FY 18	17 to 18	FY 19	18 to 19	FY 20	19 to 20	16 to 20	Variance
Oct	1,930,352	1,670,933	-13.4%	1,708,564	2.3%	1,757,225	2.8%	1,643,166	-6.5%	-14.9%	
Nov	1,761,820	1,734,267	-1.6%	1,609,888	-7.2%	1,656,929	2.9%	1,469,448	-11.3%	-16.6%	
Dec	1,813,506	1,734,768	-4.3%	1,517,341	-12.5%	1,553,804	2.4%	1,433,928	-7.7%	-20.9%	
Jan	1,787,476	1,743,638	-2.5%	1,615,576	-7.3%	1,708,695	5.8%	1,576,340	-7.7%	-11.8%	
Feb	1,824,256	1,676,215	-8.1%	1,545,581	-7.8%	1,501,458	-2.9%	1,549,118	3.2%	-15.1%	
Mar	1,994,796	1,926,434	-3.4%	1,700,714	-11.7%	1,554,851	-8.6%	1,027,319	-33.9%	-48.5%	
Apr	1,843,808	1,677,459	-9.0%	1,619,890	-3.4%	1,559,446	-3.7%	287,803	-81.5%	-84.4%	
May	1,769,327	1,787,885	1.0%	1,618,504	-9.5%	1,531,597	-5.4%	337,696	-78.0%	-80.9%	
Jun	1,692,476	1,605,234	-5.2%	1,524,311	-5.0%	1,359,966	-10.8%	608,758	-55.2%	-64.0%	
Jul	1,577,572	1,500,243	-4.9%	1,527,380	1.8%	1,419,158	-7.1%	632,964	-55.4%	-59.9%	
Aug	1,711,665	1,693,524	-1.1%	1,632,471	-3.6%	1,463,646	-10.3%	641,275	-56.2%	-62.5%	
Sep	1,753,985	1,234,135	-29.6%	1,530,088	24.0%	1,427,726	-6.7%	654,244	-54.2%	-62.7%	
Total	21,461,039	19,984,735	-6.9%	19,150,308	-4.2%	18,494,501	-3.4%	11,862,059	-35.9%	-44.7%	

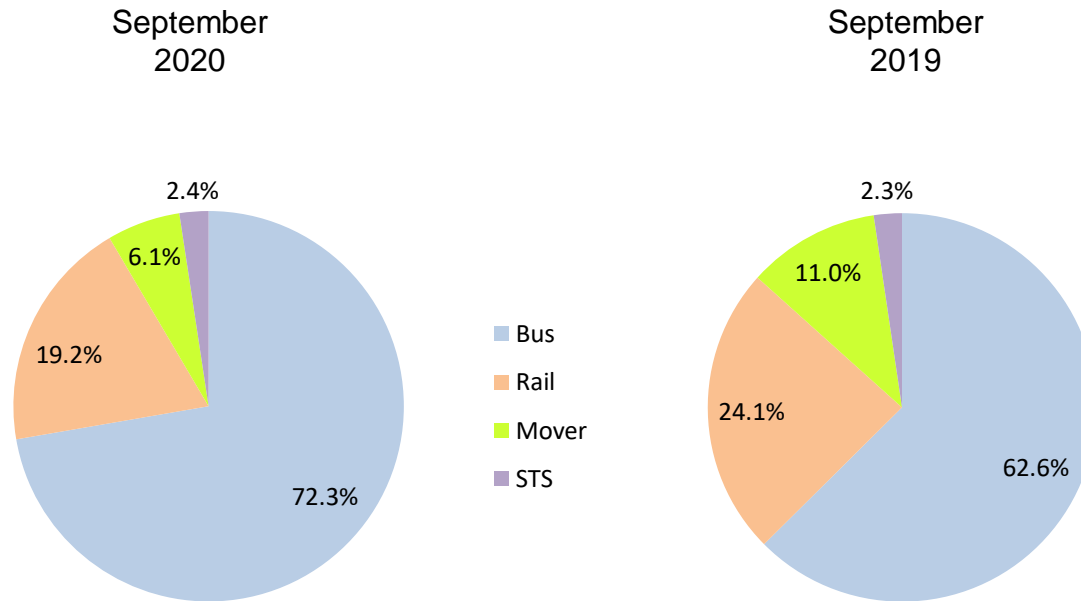
METROMOVER TOTAL MONTHLY RIDERSHIP COMPARISONS BY FISCAL YEAR

Mover	Variance			Variance		Variance		Variance		Variance
	FY 16	FY 17	16 to 17	FY 18	17 to 18	FY 19	18 to 19	FY 20	19 to 20	16 to 20
Oct	899,379	814,781	-9.4%	751,323	-7.8%	790,533	5.2%	831,234	5.1%	-7.6%
Nov	828,643	841,679	1.6%	729,519	-13.3%	735,198	0.8%	799,632	8.8%	-3.5%
Dec	875,701	858,961	-1.9%	748,797	-12.8%	767,239	2.5%	849,832	10.8%	-3.0%
Jan	864,630	852,788	-1.4%	772,122	-9.5%	746,728	-3.3%	847,773	13.5%	-1.9%
Feb	860,579	780,514	-9.3%	698,107	-10.6%	675,160	-3.3%	855,398	26.7%	-0.6%
Mar	1,010,118	949,045	-6.0%	859,143	-9.5%	737,814	-14.1%	441,200	-40.2%	-56.3%
Apr	886,427	802,778	-9.4%	740,036	-7.8%	795,696	7.5%	130,549	-83.6%	-85.3%
May	831,477	814,791	-2.0%	694,106	-14.8%	734,645	5.8%	146,454	-80.1%	-82.4%
Jun	806,774	737,042	-8.6%	641,675	-12.9%	701,318	9.3%	203,637	-71.0%	-74.8%
Jul	841,630	796,649	-5.3%	700,462	-12.1%	739,814	5.6%	210,596	-71.5%	-75.0%
Aug	814,796	788,734	-3.2%	768,728	-2.5%	739,785	-3.8%	205,995	-72.2%	-74.7%
Sep	797,995	425,641	-46.7%	698,505	64.1%	699,879	0.2%	219,696	-68.6%	-72.5%
Total	10,318,149	9,463,403	-8.3%	8,802,523	-7.0%	8,863,809	0.7%	5,741,996	-35.2%	-44.4%

SPECIAL TRANSPORTATION SERVICES (STS) TOTAL MONTHLY RIDERSHIP COMPARISONS BY FISCAL YEAR

STS	FY 16	FY 17	Variance 16 to 17	FY 18	Variance 17 to 18	FY 19	Variance 18 to 19	FY 20	Variance 19 to 20	Variance 16 to 20
Oct	146,823	132,211	-10.0%	153,409	16.0%	162,564	6.0%	162,704	0.1%	10.8%
Nov	130,953	137,030	4.6%	143,375	4.6%	145,653	1.6%	144,366	-0.9%	10.2%
Dec	129,710	133,439	2.9%	136,955	2.6%	136,110	-0.6%	138,642	1.9%	6.9%
Jan	129,219	134,273	3.9%	140,042	4.3%	146,268	4.4%	149,114	1.9%	15.4%
Feb	133,999	134,089	0.1%	139,032	3.7%	141,396	1.7%	144,392	2.1%	7.8%
Mar	144,181	153,790	6.7%	150,384	-2.2%	153,191	1.9%	89,634	-41.5%	-37.8%
Apr	140,149	137,217	-2.1%	148,879	8.5%	155,808	4.7%	26,877	-82.7%	-80.8%
May	140,456	151,138	7.6%	152,164	0.7%	158,665	4.3%	39,654	-75.0%	-71.8%
Jun	137,936	140,623	1.9%	143,653	2.2%	141,320	-1.6%	59,093	-58.2%	-57.2%
Jul	129,989	133,656	2.8%	141,020	5.5%	148,232	5.1%	61,765	-58.3%	-52.5%
Aug	137,964	145,760	5.7%	151,750	4.1%	147,331	-2.9%	66,563	-54.8%	-51.8%
Sep	141,966	100,010	-29.6%	142,360	42.3%	141,387	-0.7%	80,346	-43.2%	-43.4%
Total	1,643,345	1,633,236	-0.6%	1,743,023	6.7%	1,777,925	2.0%	1,163,150	-34.6%	-29.2%

AVERAGE WEEKDAY RIDERSHIP - MODAL SPLITS



Metrobus



September 2020

METROBUS MONTHLY AND AVERAGE DAILY BOARDINGS BY ROUTE

Route	Average Weekday	Average Weekday	Percent Change	Average Saturday	Average Saturday	Percent Change	Average Sunday	Average Sunday	Percent Change	Total Monthly	Total Monthly	Percent Change
	Sep-20	Sep-19	20 vs 19	Sep-20	Sep-19	20 vs 19	Sep-20	Sep-19	20 vs 19	Sep-20	Sep-19	20 vs 19
1 (*)	194	290	-33.3%	178	243	-26.8%	171	216	-21.0%	5,658	8,077	-29.9%
2	1,630	2,416	-32.5%	1,176	1,456	-19.3%	584	949	-38.5%	42,901	59,830	-28.3%
3	3,019	4,746	-36.4%	2,902	5,053	-42.6%	2,598	3,737	-30.5%	88,411	137,554	-35.7%
7	1,896	3,254	-41.7%	1,182	1,801	-34.4%	885	1,369	-35.4%	49,987	80,504	-37.9%
8	2,906	3,772	-23.0%	1,749	1,909	-8.4%	1,366	1,484	-7.9%	76,387	91,970	-16.9%
9	3,901	5,248	-25.7%	2,358	3,087	-23.6%	2,021	2,200	-8.1%	103,343	130,511	-20.8%
10	960	2,105	-54.4%	1,294	1,708	-24.2%	880	1,237	-28.9%	29,809	56,360	-47.1%
11	4,520	7,023	-35.6%	3,212	5,287	-39.2%	2,749	3,673	-25.2%	123,277	183,647	-32.9%
12	1,732	2,766	-37.4%							38,107	55,318	-31.1%
16	917	1,749	-47.6%	931	1,399	-33.5%	609	813	-25.1%	26,323	45,451	-42.1%
17	2,002	3,796	-47.3%	1,443	2,449	-41.1%	970	1,535	-36.8%	53,698	94,933	-43.4%
19	699	1,578	-55.7%							15,384	31,550	-51.2%
21	1,492	1,817	-17.9%							32,824	36,338	-9.7%
22	1,732	3,559	-51.3%	1,506	2,005	-24.9%	983	1,349	-27.2%	48,052	87,285	-44.9%
24 - Coral Way Limited	1,230	1,735	-29.1%	729	1,189	-38.7%	643	870	-26.1%	32,558	44,683	-27.1%
27	3,821	6,639	-42.5%	3,225	3,982	-19.0%	2,459	2,808	-12.4%	106,788	165,560	-35.5%
29 (*)	308	669	-54.0%							6,779	13,388	-49.4%
31 - BUSWAY LOCAL	577	1,044	-44.8%	703	856	-17.9%	563	594	-5.3%	17,756	27,875	-36.3%
32	1,638	2,384	-31.3%	789	1,003	-21.4%	558	678	-17.7%	41,412	55,761	-25.7%
33	664	1,687	-60.6%	513	919	-44.2%	393	501	-21.5%	18,233	40,412	-54.9%
34 EXPRESS (*)	720	1,900	-62.1%							15,849	38,008	-58.3%
35 (*)	1,497	2,354	-36.4%	896	1,123	-20.3%	801	776	3.3%	39,723	56,218	-29.3%
36	1,637	2,395	-31.6%	1,051	1,212	-13.3%	1,039	971	7.0%	44,376	58,566	-24.2%
37	1,876	3,262	-42.5%	1,161	2,076	-44.1%	1,107	1,520	-27.2%	50,345	82,666	-39.1%
38	3,433	6,462	-46.9%	2,708	4,750	-43.0%	2,483	3,844	-35.4%	96,296	171,304	-43.8%
39 EXPRESS (*)	152	937	-83.8%							3,343	18,732	-82.2%

METROBUS MONTHLY AND AVERAGE DAILY BOARDINGS BY ROUTE

Route	Average Weekday	Average Weekday	Percent Change	Average Saturday	Average Saturday	Percent Change	Average Sunday	Average Sunday	Percent Change	Total Monthly	Total Monthly	Percent Change
	Sep-20	Sep-19	20 vs 19	Sep-20	Sep-19	20 vs 19	Sep-20	Sep-19	20 vs 19	Sep-20	Sep-19	20 vs 19
40	1,004	1,713	-41.4%	372	642	-42.1%	332	425	-21.9%	24,891	39,382	-36.8%
42	408	848	-51.9%	412	535	-23.0%	292	321	-9.1%	11,782	21,017	-43.9%
46 - LIBERTY CITY CONN. (*)	13	25	-47.9%							290	506	-42.7%
51 - FLAGLER MAX	1,654	3,127	-47.1%							36,389	62,530	-41.8%
52	675	1,266	-46.7%	447	660	-32.3%	429	453	-5.5%	18,357	30,684	-40.2%
54	2,109	2,908	-27.5%	1,541	1,676	-8.0%	1,039	1,110	-6.4%	56,722	71,522	-20.7%
56 (*)	157	369	-57.4%							3,459	7,378	-53.1%
57 (*)	240	407	-40.9%							5,283	8,131	-35.0%
62	1,501	1,825	-17.7%	1,287	1,184	8.7%	822	779	5.5%	41,461	45,904	-9.7%
71 (*)	305	563	-45.8%	150	192	-21.6%	148	129	14.5%	7,907	12,800	-38.2%
72 (*)	361	722	-49.9%	207	335	-38.3%	143	244	-41.4%	9,350	17,240	-45.8%
73	1,098	2,153	-49.0%	575	1,034	-44.4%	260	367	-29.0%	27,486	49,400	-44.4%
75	626	1,508	-58.5%	339	460	-26.3%	249	246	1.5%	16,116	33,471	-51.9%
77	4,373	7,175	-39.0%	2,294	4,015	-42.9%	2,285	2,484	-8.0%	114,530	174,470	-34.4%
82 - WESTCHESTER CIRC. (*)	26	54	-50.8%	26	39	-33.8%				686	1,233	-44.4%
87	783	1,544	-49.3%	337	427	-21.1%	253	287	-12.1%	19,584	34,306	-42.9%
88	1,281	2,001	-36.0%	1,020	1,522	-33.0%	676	1,105	-38.9%	34,956	52,733	-33.7%
93 - BISCAYNE MAX	1,352	3,199	-57.7%							29,737	63,972	-53.5%
95 EXPRESS (*)	289	1,803	-84.0%							6,355	36,052	-82.4%
99	853	1,449	-41.1%	561	885	-36.6%	462	578	-20.1%	22,856	35,979	-36.5%
101 - A (*)	92	156	-41.0%	41	60	-31.5%	33	42	-21.1%	2,320	3,608	-35.7%
102 - B	793	1,617	-50.9%	485	726	-33.3%	532	600	-11.3%	21,517	38,832	-44.6%
103 - C	139	403	-65.6%	109	288	-62.3%	131	163	-19.4%	4,006	10,186	-60.7%
104	285	934	-69.5%	43	503	-91.6%	73	299	-75.6%	6,733	22,478	-70.0%
105 - E	657	1,125	-41.6%	355	602	-41.1%	384	481	-20.1%	17,415	27,801	-37.4%

METROBUS MONTHLY AND AVERAGE DAILY BOARDINGS BY ROUTE

Route	Average Weekday	Average Weekday	Percent Change	Average Saturday	Average Saturday	Percent Change	Average Sunday	Average Sunday	Percent Change	Total Monthly	Total Monthly	Percent Change
	Sep-20	Sep-19	20 vs 19	Sep-20	Sep-19	20 vs 19	Sep-20	Sep-19	20 vs 19	Sep-20	Sep-19	20 vs 19
107 - G	751	1,635	-54.1%	586	1,050	-44.2%	527	705	-25.3%	20,982	41,139	-49.0%
108 - H	186	435	-57.3%	241	359	-33.0%	228	281	-18.9%	5,957	11,819	-49.6%
110 - J	1,628	2,447	-33.5%	1,369	1,867	-26.7%	1,035	1,268	-18.4%	45,425	64,012	-29.0%
112 - L	6,383	7,161	-10.9%	4,570	5,660	-19.3%	3,508	3,958	-11.4%	172,726	189,610	-8.9%
113 - M	350	793	-55.9%	304	480	-36.7%	206	350	-41.3%	9,743	19,889	-51.0%
115 (*)	212	144	47.2%	121	97	24.2%	114	73	55.8%	5,598	3,704	51.1%
119 - S	6,158	7,799	-21.0%	4,728	6,632	-28.7%	4,893	5,889	-16.9%	173,956	217,831	-20.1%
120 - BEACH MAX	3,813	5,866	-35.0%	3,002	4,464	-32.7%	1,849	2,840	-34.9%	103,296	152,212	-32.1%
132 TRI-RAIL (DORAL)	13	14	-6.9%							296	289	2.4%
135 (*)	655	1,291	-49.3%	258	496	-47.9%	216	317	-31.8%	16,301	29,704	-45.1%
136	49	142	-65.7%							1,067	2,830	-62.3%
137 - WEST DADE CONN.	790	1,644	-51.9%	590	1,046	-43.6%	568	787	-27.9%	22,019	41,785	-47.3%
150 - MIAMI BEACH AIRPORT FLYER (*)	819	1,604	-48.9%	769	1,402	-45.2%	945	1,196	-21.0%	24,879	44,866	-44.5%
155 - BISCAYNE GARDENS CIRCULATOR (*)	30	44	-31.8%							657	876	-25.0%
183	1,810	2,917	-37.9%	1,230	1,731	-28.9%	1,028	1,208	-14.9%	48,854	72,509	-32.6%
200 - CUTLER BAY LOCAL	35	160	-77.9%	43	135	-68.0%	43	43	-0.8%	1,118	3,992	-72.0%
202 - LITTLE HAITI CONN. (*)	105	136	-22.7%	49	67	-27.0%	52	48	8.0%	2,723	3,284	-17.1%
207 (7st) - LITTLE HAVANA CIRC	925	1,474	-37.2%	740	943	-21.6%	516	655	-21.3%	25,370	37,180	-31.8%
208 (8st) - LITTLE HAVANA CIRC	925	1,422	-35.0%	822	995	-17.4%	632	788	-19.8%	26,160	37,140	-29.6%
210 - SKYLAKE CIRC (*)	168	297	-43.4%	131	180	-27.0%	124	140	-11.4%	4,721	7,506	-37.1%
211 - OVERTOWN CIRC. (*)	35	66	-47.0%							770	1,320	-41.7%
212 - SWEETWATER CIRC. (*)	20	38	-46.1%							448	756	-40.7%
217 - BUNCHE PARK CIRC (*)	72	59	22.9%							1,585	1,172	35.2%
238 EAST/WEST CONN.	210	450	-53.2%							4,629	8,990	-48.5%

METROBUS MONTHLY AND AVERAGE DAILY BOARDINGS BY ROUTE

Route	Average Weekday	Average Weekday	Percent Change	Average Saturday	Average Saturday	Percent Change	Average Sunday	Average Sunday	Percent Change	Total Monthly	Total Monthly	Percent Change
	Sep-20	Sep-19	20 vs 19	Sep-20	Sep-19	20 vs 19	Sep-20	Sep-19	20 vs 19	Sep-20	Sep-19	20 vs 19
246 - NIGHT OWL	1	90	-98.8%		74		1	88	-98.9%	28	2,619	-98.9%
248 - PRINCETON CIRCULATOR (*)	71	116	-39.1%							1,558	2,324	-33.0%
252 - CORAL REEF MAX	307	858	-64.2%	178	283	-37.0%	161	212	-23.9%	8,116	19,563	-58.5%
254 - BROWNSVILLE CIRC. (*)	12	15	-15.6%							274	295	-7.1%
267 - LUDLAM LIMITED (*)	84	122	-31.3%							1,849	2,447	-24.4%
272 SUNSET KAT (*)	215	526	-59.1%							4,731	10,513	-55.0%
277 - 7th AVENUE MAX	356	601	-40.7%							7,838	12,010	-34.7%
286 - NORTH POINTE CIRC. (*)	37	75	-51.0%	30	56	-46.2%				929	1,724	-46.1%
287 - SAGA BAY MAX	98	332	-70.4%							2,161	6,648	-67.5%
297-27th AVENUE ORANGE MAX	665	1,300	-48.9%							14,625	25,997	-43.7%
301 DADE-MONROE EXPRESS (*)	747	737	1.4%	753	753	0.0%	640	657	-2.7%	22,014	21,699	1.5%
302 CARD SOUND EXPRESS (*)	47	66	-28.8%	30	52	-43.3%	30	44	-31.0%	1,270	1,787	-28.9%
338 - WEEKEND EXPRESS	60			82	202	-59.4%	89	197	-54.9%	743	1,988	-62.6%
344 (*)	51	88	-41.9%							1,126	1,761	-36.1%
500	40	30	29.9%	29	40	-26.4%	33	42	-20.2%	1,119	1,017	10.0%
12/21 WEEKEND INTERL.				1,432	2,568	-44.2%	1,305	1,878	-30.5%	10,948	21,541	-49.2%
GREEN HILLS SHUTTLE (*)	6	6	-3.2%							24	31	-22.6%
KINGS CREEK SHUTTLE (*)	19	14	38.9%							75	54	38.9%
SIERRA LAKES SHUTTLE (*)	24	26	-5.9%							96	102	-5.9%
ROBERT SHARP SHUTTLE (*)	29	5	510.5%							145	19	663.2%
AHEPA SHUTTLE (*)	25	23	7.7%							98	91	7.7%
FEDERATION GARDENS SHUTTLE (*)				17	25	-29.6%				69	98	-29.6%
Total (†)	95,266	160,982	-40.8%	62,401	91,008	-31.4%	51,136	64,958	-21.3%	2,546,923	3,971,220	-35.9%

(1) Includes shuttles and those routes which were not run both years.

(2) Nearly every bus route experienced year-over-year losses as a result of the SARS-CoV-2 pandemic; rides were fare-free beginning March 22, 2020.

(*) The following routes are entirely operated under contract: 1, 29, 34, 35, 39, 46, 56, 57, 71, 72, 82, 95, 101-A, 115, 135, 150, 155, 202, 210, 211, 212, 217, 248, 254, 267, 272, 286, 301, 302 and 344, although some supplemental runs may be performed by DTPW. Conversely, a few routes that are nominally run by DTPW may have a few supplemental runs operated by contractors; Dade-Monroe routes 301 and 302 as well as six Lifeline routes are also under contracted operation.

(†) Not shown are several express routes were suspended at the end of March or the beginning of April 2020, due to the SARS-CoV-2 pandemic, while other routes had alignment and schedule modifications made to them, in an ongoing effort to optimize service delivery; the September 2019 totals include those routes.

METROBUS HOLIDAY BOARDINGS BY ROUTE

Labor Day Holiday

ROUTES	Labor Day 2019	Labor Day 2020	Pct Delta	ROUTES	Labor Day 2019	Labor Day 2020	Pct Delta	ROUTES	Labor Day 2019	Labor Day 2020	Pct Delta
1 (*)	207	190	-8.2%	57 (*)		162		207	520	710	36.5%
2	699	1,187	69.8%	62	544	681	25.2%	208	556	512	-7.9%
3	2,549	2,667	4.6%	71 (*)	135	241	78.5%	210 (*)	147	191	29.9%
7	949	1,180	24.3%	72 (*)	250	206	-17.6%	211 (*)		15	
8	1,269	1,963	54.7%	73	315	413	31.1%	212 (*)		50	
9	1,572	2,588	64.6%	75	142	359	152.8%	217 (*)		29	
10	838	1,573	87.7%	77	1,769	2,642	49.3%	246	88		
11	2,837	2,390	-15.8%	82 (*)		12		248 (*)		45	
12	809	816	0.9%	87	199	261	31.2%	252	175	144	-17.7%
16	602	621	3.2%	88	856	935	9.2%	254 (*)		8	
17	1,144	1,177	2.9%	95 (*)		30		267 (*)		52	
21	627	722	15.2%	99	343	431	25.7%	272 (*)		194	
22	1,040	1,138	9.4%	101 (*)	45	52	15.6%	286 (*)		27	
24	619	501	-19.1%	102	402	93	-76.9%	301 (*)	497	741	49.1%
27	1,977	2,563	29.6%	103	112	51	-54.5%	302 (*)	43	24	-44.2%
29 (*)		218		104	267	199	-25.5%	338	198	60	-69.7%
31	450	659	46.4%	105	367	451	22.9%	344 (*)		36	
32	406	783	92.9%	107	447	585	30.9%	500	32	40	25.0%
33	373	297	-20.4%	108	148	320	116.2%				
34 (*)		416		110	961	1,257	30.8%				
35 (*)	828	1,177	42.1%	112	2,710	4,881	80.1%				
36	759	1,116	47.0%	113	253	228	-9.9%				
37	1,332	1,316	-1.2%	115 (*)	81	127	56.8%				
38	2,952	2,779	-5.9%	119	3,774	5,709	51.3%				
39 (*)		76		120	1,737	2,381	37.1%				
40	357	479	34.2%	135 (*)	192	529	175.5%				
42	240	190	-20.8%	137	622	527	-15.3%				
46 (*)		5		150 (*)	813	707	-13.0%				
51		419		155 (*)		18					
52	370	402	8.6%	183	687	1,226	78.5%				
54	819	1,092	33.3%	200	21	32	52.4%				
56 (*)		160		202 (*)	52	112	115.4%	Total (1)	47,124	61,596	30.7%

(*) Routes currently under contracted operation

(1) Excludes lifeline shuttles; many routes were not run both years on Labor Day

BUS RIDERSHIP BY ROUTE SERVICE TYPE

Boardings by Service Type and Route	Average Weekday Sep-20	Average Weekday Sep-19	Percent Change 20 vs 19	Average Saturday Sep-20	Average Saturday Sep-19	Percent Change 20 vs 19	Average Sunday Sep-20	Average Sunday Sep-19	Percent Change 20 vs 19	Total Monthly Sep-20	Total Monthly Sep-19	Percent Change 20 vs 19
Express Routes												
34 EXPRESS (*)	720	1,900	-62.1%							15,849	38,008	-58.3%
39 EXPRESS (*)	152	937	-83.8%							3,343	18,732	-82.2%
95-EXPRESS (*)	289	1,803	-84.0%							6,355	36,052	-82.4%
150-MIAMI BEACH AIRPORT FLYER (*)	819	1,604	-48.9%	769	1,402	-45.2%	945	1,196	-21.0%	24,879	44,866	-44.5%
175 - NW MIAMI-DADE EXPRESS												
195 EXPRESS - BROWARD BLVD		415									8,299	-100.0%
196 EXPRESS - SHERIDAN ST		382									7,648	-100.0%
295 EXPRESS - BROWARD BLVD - CIVIC CENTER		233									4,655	-100.0%
296 EXPRESS - SHERIDAN ST - CIVIC CENTER		228									4,555	-100.0%
204 KAT-KILLIAN		1,034									20,670	-100.0%
288 KENDALL CRUISER		782									15,641	-100.0%
338 - WEEKEND EXPRESS	60			82	202	-59.4%	89	197	-54.9%	743	1,988	-62.6%
836 EXPRESS												
Subtotal Express Routes	2,041	9,317	-78.1%	851	1,604	-47.0%	1,034	1,392	-25.8%	51,169	201,114	-74.6%
Percentage of All Bus Routes	2.1%	5.8%		1.4%	1.8%		2.0%	2.1%		2.0%	5.1%	
Contracted Regular & Circulator Routes												
1	194	290	-33.3%	178	243	-26.8%	171	216	-21.0%	5,658	8,077	-29.9%
29	308	669	-54.0%							6,779	13,388	-49.4%
35	1,497	2,354	-36.4%	896	1,123	-20.3%	801	776	3.3%	39,723	56,218	-29.3%
46 - LIBERTY CITY CONN.	13	25	-47.9%							290	506	-42.7%
56	157	369	-57.4%							3,459	7,378	-53.1%
57	240	407	-40.9%							5,283	8,131	-35.0%
71	305	563	-45.8%	150	192	-21.6%	148	129	14.5%	7,907	12,800	-38.2%
72	361	722	-49.9%	207	335	-38.3%	143	244	-41.4%	9,350	17,240	-45.8%
82 - WESTCHESTER CIRC	26	54	-50.8%	26	39					686	1,233	-44.4%
101 - A	92	156	-41.0%	41	60	-31.5%	33	42	-21.1%	2,320	3,608	-35.7%
115	212	144	47.2%	121	97	24.2%	114	73	55.8%	5,598	3,704	51.1%
135	655	1,291	-49.3%	258	496		216	317		16,301	29,704	-45.1%
155 - BISCAYNE GARDENS CIRC	30	44	-31.8%							657	876	-25.0%
202 - LITTLE HAITI CONN.	105	136	-22.7%	49	67	-27.0%	52	48	8.0%	2,723	3,284	-17.1%
210 - SKYLAKE CIRC	168	297	-43.4%	131	180	-27.0%	124	140	-11.4%	4,721	7,506	-37.1%
211-OVERTOWN CIRC	35	66	-47.0%							770	1,320	-41.7%
212-SWEETWATER CIRC	20	38	-46.1%							448	756	-40.7%
217 - BUNCHE PARK CIRC	72	59	22.9%							1,585	1,172	35.2%
248 - PRINCETON CIRCULATOR	71	116	-39.1%							1,558	2,324	-33.0%
254-BROWNSVILLE CIRC	12	15	-15.6%							274	295	-7.1%
267-LUDLAM LIMITED	84	122	-31.3%							1,849	2,447	-24.4%
272 KAT-SUNSET	215	526	-59.1%							4,731	10,513	-55.0%
286-NORTH POINTE CIRC	37	75	-51.0%	30	56	-46.2%				929	1,724	-46.1%
344	51	88	-41.9%							1,126	1,761	-36.1%
Subtotal Contracted Reg. & Circ. Routes	4,963	8,626	-42.5%	2,086	2,887	-27.7%	1,801	1,984	-9.2%	124,725	195,965	-36.4%
Percentage of All Bus Routes	5.2%	5.4%		3.3%	3.2%		3.5%	3.1%		4.9%	4.9%	

BUS RIDERSHIP BY ROUTE SERVICE TYPE

Boardings by Service Type and Route	Average Weekday	Average Weekday	Percent Change	Average Saturday	Average Saturday	Percent Change	Average Sunday	Average Sunday	Percent Change	Total Monthly	Total Monthly	Percent Change
	Sep-20	Sep-19	20 vs 19	Sep-20	Sep-19	20 vs 19	Sep-20	Sep-19	20 vs 19	Sep-20	Sep-19	20 vs 19
Contracted Express Routes												
301-DADE MONROE EXPRESS	747	737	1.4%	753	753	0.0%	640	657	-2.7%	22,014	21,699	1.5%
302-CARD SOUND EXPRESS	47	66	-28.8%	30	52	-43.3%	30	44	-31.0%	1,270	1,787	-28.9%
Subtotal Contracted Express Routes	794	803	-1.1%	783	805	-2.8%	670	701	-4.5%	23,284	23,486	-0.9%
Percentage of All Bus Routes	0.8%	0.5%		1.3%	0.9%		1.3%	1.1%		0.9%	0.6%	
Limited Stop Routes												
51-FLAGLER MAX	1,654	3,127	-47.1%							36,389	62,530	-41.8%
93 - BISCAYNE MAX	1,352	3,199	-57.7%							29,737	63,972	-53.5%
120 - BEACH MAX	3,813	5,866	-35.0%	3,002	4,464	-32.7%	1,849	2,840	-34.9%	103,296	152,212	-32.1%
252-CORAL REEF MAX	307	858	-64.2%	178	283	-37.0%	161	212	-23.9%	8,116	19,563	-58.5%
277-7TH AVENUE MAX	356	601	-40.7%							7,838	12,010	-34.7%
287-SAGA BAY MAX	98	332	-70.4%							2,161	6,648	-67.5%
297-27th AVENUE ORANGE MAX	665	1,300	-48.9%							14,625	25,997	-43.7%
Subtotal Limited Stop (MAX) Routes	8,246	15,282	-46.0%	3,180	4,747	-33.0%	2,010	3,051	-34.1%	202,162	342,932	-41.0%
Percentage of All Bus Routes	8.7%	9.5%		5.1%	5.2%		3.9%	4.7%		7.9%	8.6%	
Free Route												
132 -TRI-RAIL DORAL	13	14	-6.9%							296	289	2.4%
Percentage of All Bus Routes	0.0%	0.0%								0.0%	0.0%	
Shuttles												
55-MARLINS SHUTTLE		46			65			66			536	
Percentage of All Bus Routes		0.0%			0.1%			0.1%		0.0%	0.0%	
Contractor-Operated Lifeline Routes												
GREEN HILLS SHUTTLE	6	6	-3.2%							24	31	-22.6%
KINGS CREEK SHUTTLE	19	14	38.9%							75	54	38.9%
SIERRA LAKES SHUTTLE	24	26	-5.9%							96	102	-5.9%
ROBERT SHARP SHUTTLE	29	5	510.5%							145	19	663.2%
AHEPA SHUTTLE	25	23	7.7%							98	91	7.7%
FEDERATION GARDENS SHUTTLE				17	25	-29.6%				69	98	-29.6%
Subtotal Contractor-Operated Lifeline Routes	102	73	40.6%	17	25	-29.6%				507	395	28.4%
Percentage of All Bus Routes	0.1%	0.0%		0.0%	0.0%		0.0%	0.0%		0.0%	0.0%	
Other Circulator Route												
200-CUTLER BAY LOCAL	35	160	-77.9%	43	135	-68.0%	43	43		1,118	3,992	-72.0%
Percentage of All Bus Routes	0.0%	0.1%		0.1%	0.1%		0.1%	0.1%		0.0%	0.1%	
All Other (Regular) Routes	79,072	126,661	-37.6%	55,442	80,742	-31.3%	45,580	57,722	-21.0%	2,143,662	3,202,511	-33.1%
Percentage of All Bus Routes	83.0%	78.7%		88.8%	88.7%		89.1%	88.9%		84.2%	80.6%	
Total Bus System (1)	95,266	160,982	-40.8%	62,401	91,008	-31.4%	51,136	64,958	-21.3%	2,546,923	3,971,220	-35.9%

(1) Includes shuttles and routes which were not run both years.

(2) Nearly every bus route experienced year-over-year losses as a result of the SARS-CoV-2 pandemic; rides were fare-free beginning March 22, 2020.

(*) The following routes are entirely operated under contract: 1, 29, 34, 35, 39, 46, 56, 57, 71, 72, 82, 95, 101-A, 115, 135, 150, 155, 202, 210, 211, 212, 217, 248, 254, 267, 272, 286, 301, 302 and 344, although some supplemental runs may be performed by DTPW. Conversely, a few routes that are nominally run by DTPW may have a few supplemental runs operated by contractors; Dade-Monroe routes 301 and 302 as well as six Lifeline routes are also under contracted operation.

Several express routes were suspended at the end of March or the beginning of April 2020, due to the SARS-CoV-2 pandemic, while other routes had alignment and schedule modifications made to them, in an ongoing effort to optimize service delivery.

September 2020

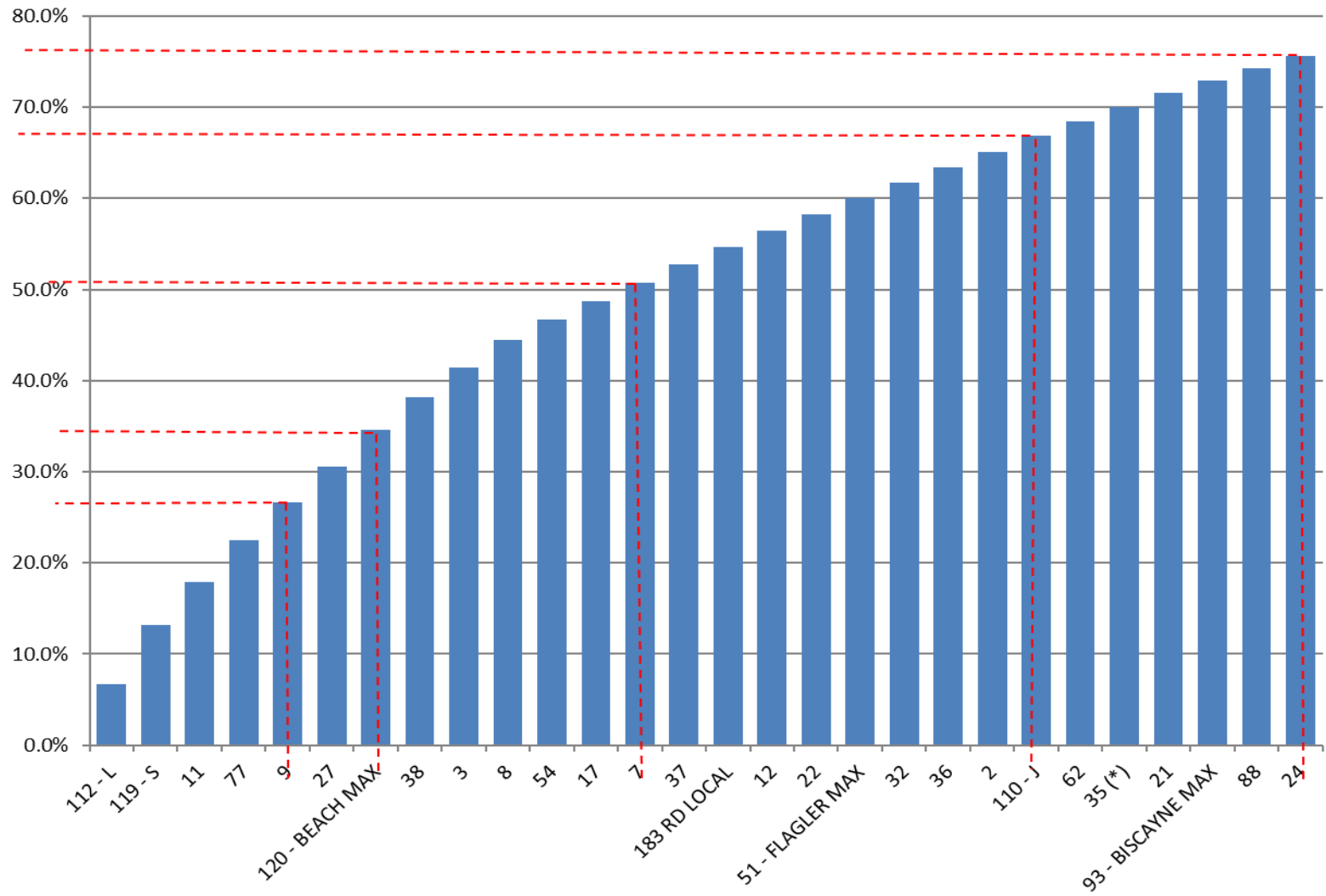
Bus Routes as Ranked by Percentage of Average Weekday Ridership

Rank	Route	Average Weekday	Percent Share	Cumul Pct Share	Rank	Route	Average Weekday	Percent Share	Cumul Pct Share	Rank	Route	Average Weekday	Percent Share	Cumul Pct Share
1	112	6,383	6.7%	6.7%	36	150	819	0.9%	83.5%	71	287	98	0.1%	99.1%
2	119	6,158	6.5%	13.2%	37	102	793	0.8%	84.3%	72	101	92	0.1%	99.2%
3	11	4,520	4.7%	17.9%	38	137	790	0.8%	85.1%	73	267	84	0.1%	99.2%
4	77	4,373	4.6%	22.5%	39	87	783	0.8%	86.0%	74	217	72	0.1%	99.3%
5	9	3,901	4.1%	26.6%	40	107	751	0.8%	86.7%	75	248	71	0.1%	99.4%
6	27	3,821	4.0%	30.6%	41	301	747	0.8%	87.5%	76	338	60	0.1%	99.5%
7	120	3,813	4.0%	34.6%	42	34	720	0.8%	88.3%	77	344	51	0.1%	99.5%
8	38	3,433	3.6%	38.2%	43	19	699	0.7%	89.0%	78	136	49	0.1%	99.6%
9	3	3,019	3.2%	41.4%	44	52	675	0.7%	89.7%	79	302	47	0.0%	99.6%
10	8	2,906	3.1%	44.4%	45	297	665	0.7%	90.4%	80	500	40	0.0%	99.7%
11	54	2,109	2.2%	46.6%	46	33	664	0.7%	91.1%	81	286	37	0.0%	99.7%
12	17	2,002	2.1%	48.7%	47	105	657	0.7%	91.8%	82	200	35	0.0%	99.7%
13	7	1,896	2.0%	50.7%	48	135	655	0.7%	92.5%	83	211	35	0.0%	99.8%
14	37	1,876	2.0%	52.7%	49	75	626	0.7%	93.2%	84	155	30	0.0%	99.8%
15	183	1,810	1.9%	54.6%	50	31	577	0.6%	93.8%	85	RS	29	0.0%	99.8%
16	12	1,732	1.8%	56.4%	51	42	408	0.4%	94.2%	86	82	26	0.0%	99.9%
17	22	1,732	1.8%	58.2%	52	72	361	0.4%	94.6%	87	AS	25	0.0%	99.9%
18	51	1,654	1.7%	60.0%	53	277	356	0.4%	94.9%	88	SL	24	0.0%	99.9%
19	32	1,638	1.7%	61.7%	54	113	350	0.4%	95.3%	89	212	20	0.0%	99.9%
20	36	1,637	1.7%	63.4%	55	29	308	0.3%	95.6%	90	KC	19	0.0%	100.0%
21	2	1,630	1.7%	65.1%	56	252	307	0.3%	96.0%	91	132	13	0.0%	100.0%
22	110	1,628	1.7%	66.8%	57	71	305	0.3%	96.3%	92	46	13	0.0%	100.0%
23	62	1,501	1.6%	68.4%	58	95	289	0.3%	96.6%	93	254	12	0.0%	100.0%
24	35	1,497	1.6%	70.0%	59	104	285	0.3%	96.9%	94	GH	6	0.0%	100.0%
25	21	1,492	1.6%	71.5%	60	57	240	0.3%	97.1%	95	246	1	0.0%	100.0%
26	93	1,352	1.4%	73.0%	61	272	215	0.2%	97.4%					
27	88	1,281	1.3%	74.3%	62	115	212	0.2%	97.6%					
28	24	1,230	1.3%	75.6%	63	238	210	0.2%	97.8%					
29	73	1,098	1.2%	76.8%	64	1	194	0.2%	98.0%					
30	40	1,004	1.1%	77.8%	65	108	186	0.2%	98.2%					
31	10	960	1.0%	78.8%	66	210	168	0.2%	98.4%					
32	207	925	1.0%	79.8%	67	56	157	0.2%	98.5%					
33	208	925	1.0%	80.8%	68	39	152	0.2%	98.7%					
34	16	917	1.0%	81.7%	69	103	139	0.1%	98.9%					
35	99	853	0.9%	82.6%	70	202	105	0.1%	99.0%					
										Total Boardings 95,266 100.0% contracted				

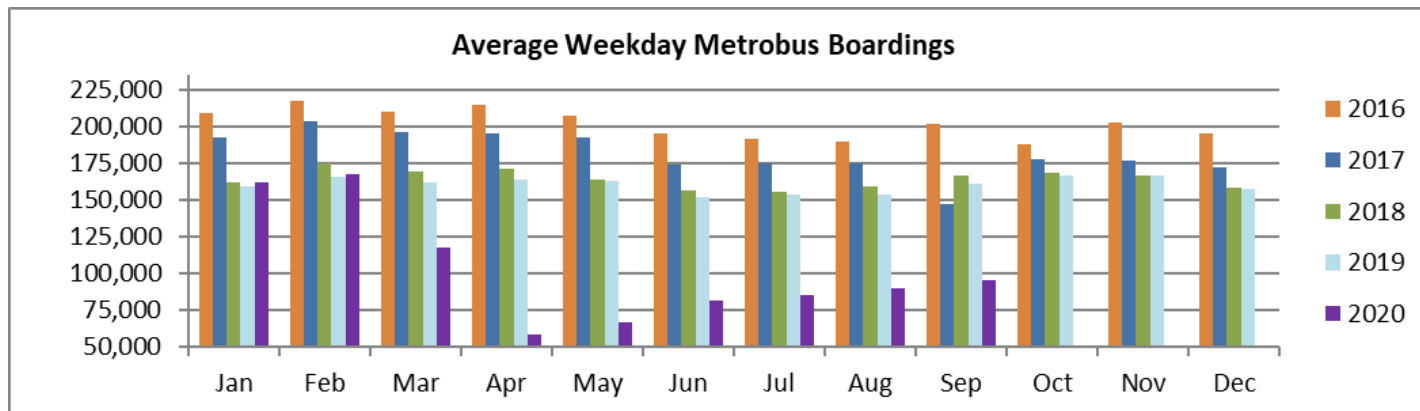
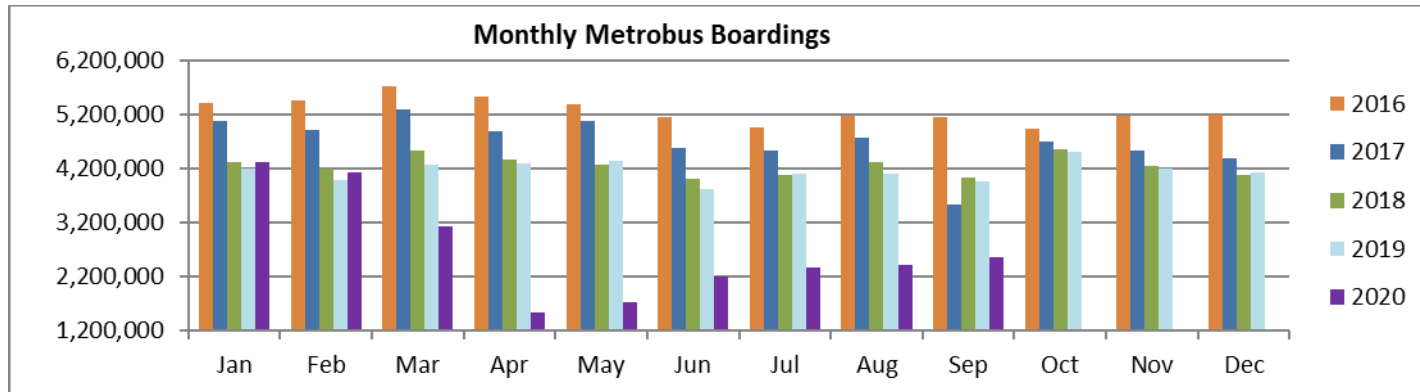
(1) Average weekday ridership rounded to the nearest unit.

(2) Includes the five Lifeline Shuttles that operate on weekdays: Ahepa, Green Hills, Kings Creek, Robert Sharp and Sierra Lakes.

Bus - Cumulative Percentage Average Weekday Ridership Share
Top 1/4, 1/3, 1/2, 2/3 and 3/4 of Routes



TOTAL MONTHLY AND AVERAGE WEEKDAY RIDERSHIP YEAR OVER YEAR COMPARISON CHARTS – METROBUS



**“TOP 5 / BOTTOM 5” BUS ROUTES AVERAGE WEEKDAY RIDERSHIP PERFORMANCE
YEAR OVER YEAR COMPARISONS**

Route	Sep-20	Sep-19	Absolute Delta (1)	Percent Delta (2)
115 (*)	212	144	68	47.2%
217 - BUNCHE PARK CIRC (*)	72	59	13	22.9%
301 DADE-MONROE EXPRESS (*)	747	737	10	1.4%
500	40	30	9	29.9%
132 TRI-RAIL (DORAL)	13	14	-1	-6.9%
38	3,433	6,462	-3,029	-46.9%
27	3,821	6,639	-2,819	-42.5%
77	4,373	7,175	-2,802	-39.0%
11	4,520	7,023	-2,503	-35.6%
120 - BEACH MAX	3,813	5,866	-2,053	-35.0%

(*) Route entirely run by contractor.

(1) Averages rounded to the nearest boarding; Lifelines excluded.

(2) As a result of the SARS-CoV-2 pandemic, only four routes had actual gains in September 2020 compared with September 2019; rides were fare-free beginning March 22, 2020.

METROBUS PARKING PATRONAGE SUMMARY

September 2020

PARK-RIDE LOT	ACTUAL AVAILABLE SPACES	ACTUAL OCCUPANCY	PERCENT OCCUPANCY
Transitway / SW 152nd St	200	32	16%
Transitway / SW 168th St	149	34	23%
Transitway / SW 200th Street (effective February 2020)	100	30	30%
Transitway / SW 112 Ave (Target)	450	46	10%
Transitway / SW 244th St	95	15	16%
Transitway / SW 296th St	139	28	20%
Transitway / SW 344th St	248	93	38%
Coral Reef Drive 117/ Turnpike	95	41	43%
Golden Glades - East Lot	535	112	21%
Golden Glades - West Lot	1,007	83	8%
Hammocks Town Center (SW 152 Ave / SW 104 St)	50	0	0%
Kendall Dr./SW 127th Ave	161	9	6%
West Kendall Transit Term (Kendall Dr / SW162 Ave)	40	3	8%
NW 7th Avenue Transit Village (NW 7 Ave / NW 62 St)	25	22	88%
Miami Gardens Dr. / NW 73rd Ave	136	8	6%
Dolphin Station (effective Mar 2020)	348	2	1%
I-75 / Miami Gardens Dr (effective June 2019)	298	0	0%
TOTAL	4,076	558	14%

Note: some park-ride lots are joint-use and the number of park-ride vehicles may exceed the number of spaces allocated.

Metrorail



September 2020

METRORAIL MONTHLY AND AVERAGE DAILY BOARDINGS BY STATION

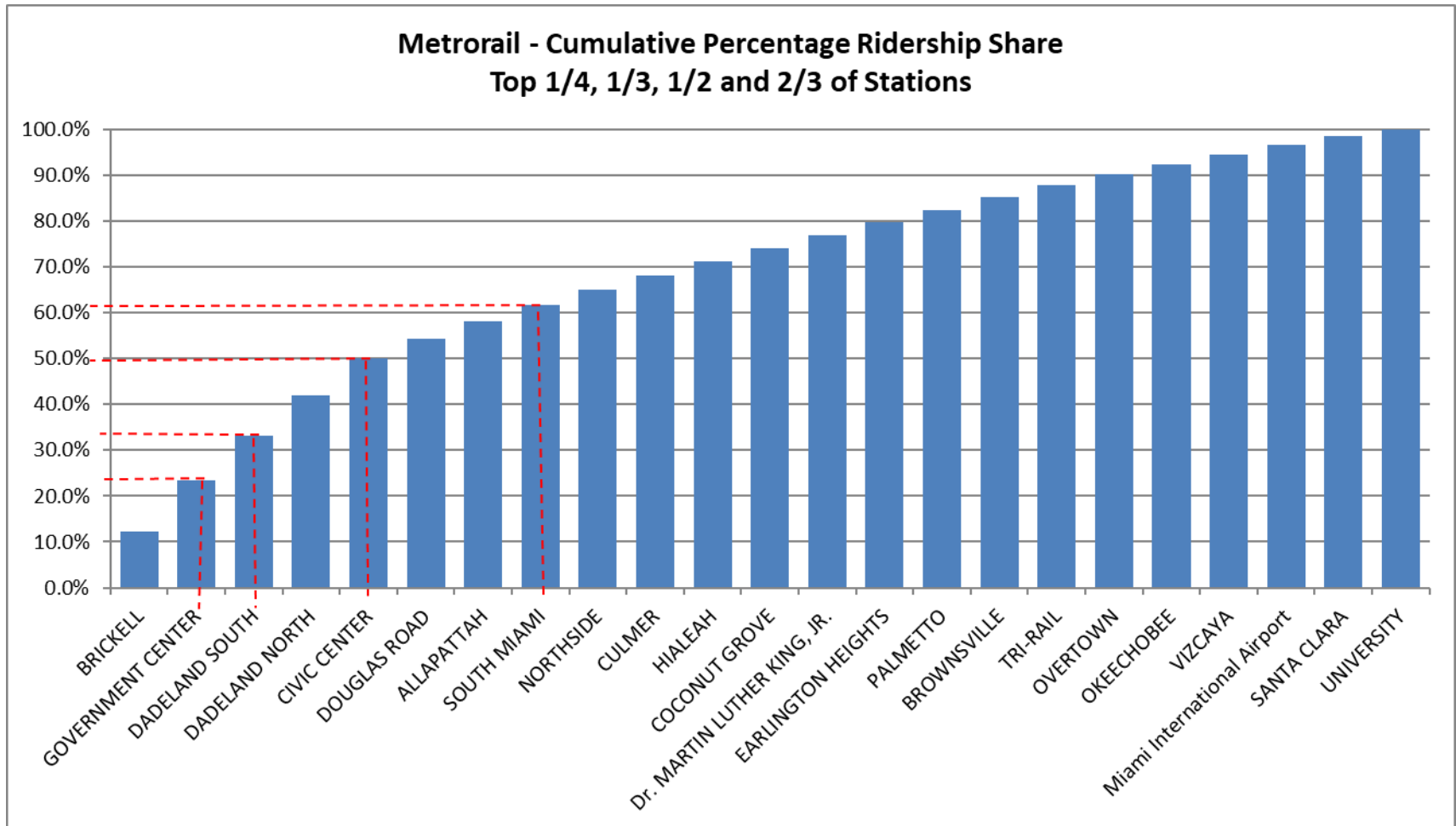
	Average Weekday	Average Weekday	Percent Change	Average Saturday	Average Saturday	Percent Change	Average Sunday	Average Sunday	Percent Change	Total Monthly	Total Monthly	Percent Change
STATIONS	Sep-20	Sep-19	20 vs 19	Sep-20	Sep-19	20 vs 19	Sep-20	Sep-19	20 vs 19	Sep-20	Sep-19	20 vs 19
ALLAPATTAH	986	1,771	-44.3%	576	957	-39.8%	465	676	-31.2%	25,482	43,214	-41.0%
BRICKELL	3,131	5,931	-47.2%	1,954	2,395	-18.4%	1,550	1,799	-13.9%	81,669	138,586	-41.1%
BROWNSVILLE	674	811	-16.9%	464	507	-8.4%	385	381	0.9%	18,023	20,472	-12.0%
CIVIC CENTER	2,073	5,821	-64.4%	559	895	-37.5%	493	704	-30.0%	48,412	124,087	-61.0%
COCONUT GROVE	735	1,584	-53.6%	432	748	-42.2%	372	577	-35.6%	19,110	37,962	-49.7%
CULMER	793	1,259	-37.0%	511	614	-16.7%	426	455	-6.5%	20,925	30,279	-30.9%
DADELAND NORTH	2,234	5,673	-60.6%	1,225	1,690	-27.5%	970	1,252	-22.6%	56,896	127,402	-55.3%
DADELAND SOUTH	2,441	6,793	-64.1%	1,474	2,411	-38.8%	1,232	1,800	-31.6%	63,586	155,912	-59.2%
DOUGLAS ROAD	1,038	3,133	-66.9%	632	1,130	-44.1%	461	772	-40.4%	26,752	71,713	-62.7%
DR. MARTIN LUTHER KING, JR.	729	1,054	-30.8%	473	551	-14.2%	382	403	-5.4%	19,153	25,611	-25.2%
EARLINGTON HEIGHTS	722	1,525	-52.7%	483	851	-43.3%	399	636	-37.3%	19,129	37,580	-49.1%
GOVERNMENT CENTER	2,824	9,503	-70.3%	1,694	3,333	-49.2%	1,380	2,349	-41.3%	73,105	216,868	-66.3%
HIALEAH	775	1,218	-36.4%	425	556	-23.7%	329	396	-17.0%	19,749	28,867	-31.6%
MIAMI INTERNATIONAL AIRPORT	539	1,542	-65.1%	527	1,132	-53.5%	502	1,119	-55.2%	16,058	41,945	-61.7%
NORTHSIDE	831	1,355	-38.6%	602	798	-24.5%	516	623	-17.3%	22,624	33,874	-33.2%
OKEECHOBEE	541	1,148	-52.9%	316	363	-13.1%	201	227	-11.7%	13,716	25,733	-46.7%
OVERTOWN / ARENA	619	2,068	-70.1%	354	493	-28.2%	367	379	-3.3%	16,257	45,480	-64.3%
PALMETTO	693	1,402	-50.6%	298	382	-22.0%	208	228	-8.9%	16,874	30,873	-45.3%
SANTA CLARA	459	718	-36.0%	276	356	-22.5%	214	229	-6.6%	11,894	17,109	-30.5%
SOUTH MIAMI	892	2,736	-67.4%	534	1,055	-49.3%	396	725	-45.4%	22,907	63,104	-63.7%
TRI-RAIL	673	1,045	-35.6%	415	471	-11.8%	332	412	-19.4%	17,537	25,026	-29.9%
UNIVERSITY	414	2,643	-84.3%	240	608	-60.6%	132	397	-66.9%	10,406	57,513	-81.9%
VIZCAYA	541	1,228	-56.0%	331	470	-29.5%	246	365	-32.5%	13,980	28,516	-51.0%
TOTAL	25,358	61,961	-59.1%	14,793	22,761	-35.0%	11,952	16,905	-29.3%	654,244	1,427,726	-54.2%

(†) All Metrorail stations reported net losses in average weekday ridership in September 2020, due to effects from the SARS-CoV-2 pandemic; rides were fare-free beginning March 22, 2020.

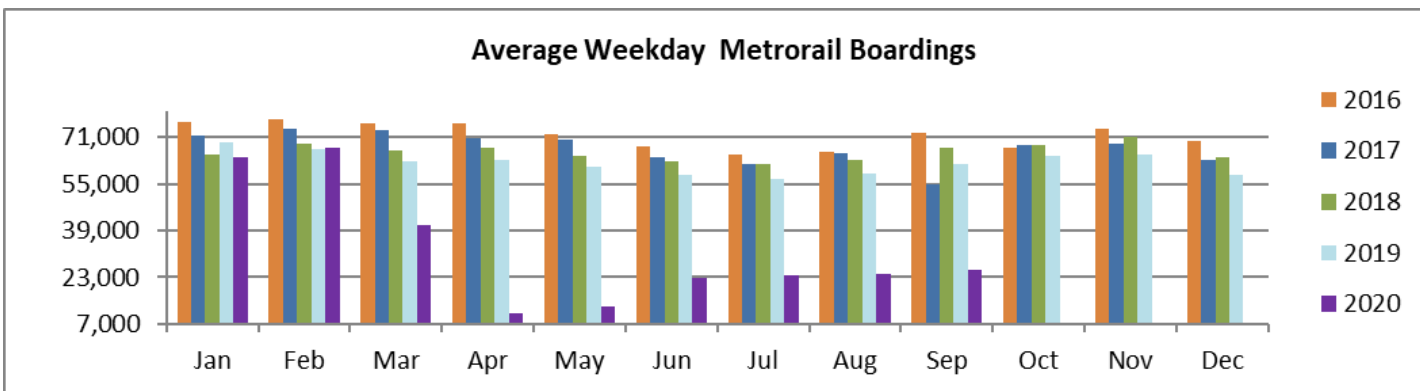
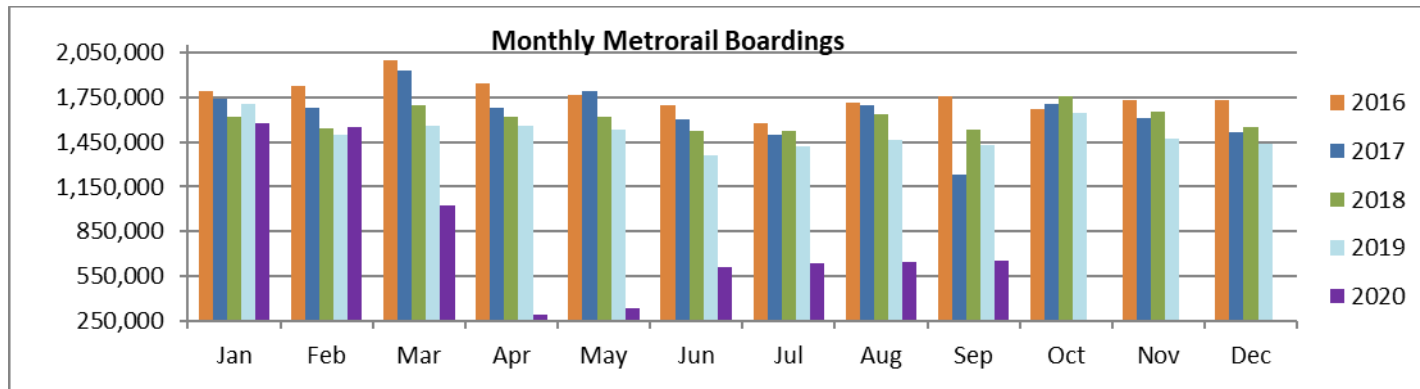
METRORAIL HOLIDAY BOARDINGS BY STATION

	Labor Day	Labor Day	Percent Change
STATIONS	2019	2020	20 vs 19
ALLAPATTAH	578	604	4.5%
BRICKELL	1,398	1,910	36.6%
BROWNSVILLE	312	469	50.3%
CIVIC CENTER	575	667	16.0%
COCONUT GROVE	411	452	10.0%
CULMER	377	532	41.1%
DADELAND NORTH	921	1,206	30.9%
DADELAND SOUTH	1,412	1,510	6.9%
DOUGLAS ROAD	663	579	-12.7%
DR. MARTIN LUTHER KING, JR.	305	416	36.4%
EARLINGTON HEIGHTS	488	442	-9.4%
GOVERNMENT CENTER	1,728	1,503	-13.0%
HIALEAH	303	465	53.5%
MIAMI INTERNATIONAL AIRPORT	981	627	-36.1%
NORTHSIDE	469	696	48.4%
OKEECHOBEE	188	295	56.9%
OVERTOWN/ ARENA	251	378	50.6%
PALMETTO	165	302	83.0%
SANTA CLARA	190	286	50.5%
SOUTH MIAMI	544	457	-16.0%
TRI-RAIL	173	418	141.6%
UNIVERSITY	239	221	-7.5%
VIZCAYA	261	317	21.5%
TOTAL	12,932	14,752	14.1%

METRORAIL CUMULATIVE PERCENTAGE RIDERSHIP SHARE



TOTAL MONTHLY AND AVERAGE WEEKDAY RIDERSHIP YEAR OVER YEAR COMPARISON CHARTS – METRORAIL



**“TOP 5 / BOTTOM 5” RAIL STATIONS AVERAGE WEEKDAY RIDERSHIP PERFORMANCE
YEAR OVER YEAR COMPARISONS**

Station	Sep-20	Sep-19	Absolute Delta (1)	Percent Delta
BROWNSVILLE	674	811	-137	-16.9%
SANTA CLARA	459	718	-258	-36.0%
Dr. MARTIN LUTHER KING, JR.	729	1,054	-325	-30.8%
TRI-RAIL	673	1,045	-373	-35.6%
HIALEAH	775	1,218	-443	-36.4%
GOVERNMENT CENTER	2,824	9,503	-6,679	-70.3%
DADELAND SOUTH	2,441	6,793	-4,352	-64.1%
CIVIC CENTER	2,073	5,821	-3,747	-64.4%
DADELAND NORTH	2,234	5,673	-3,439	-60.6%
BRICKELL	3,131	5,931	-2,800	-47.2%

(1) Averages rounded to the nearest boarding.

(†) All Metrorail stations reported net losses in September 2020, due to effects on ridership from the SARS-CoV-2 pandemic.

METRORAIL PARKING PATRONAGE SUMMARY

September 2020

PARK-RIDE LOT	ACTUAL CAPACITY (1)	ACTUAL OCCUPANCY (2)	PERCENT OCCUPANCY
DADELAND SOUTH	1,280		
DADELAND NORTH	1,963		
SOUTH MIAMI	1,081		
UNIVERSITY	260		
DOUGLAS ROAD	150		
COCONUT GROVE	100		
VIZCAYA	120		
CULMER	40		
SANTA CLARA	61		
ALLAPATTAH	74		
EARLINGTON HEIGHTS	361		
BROWNSVILLE	100		
DR. MARTIN LUTHER KING JR. (MDT)	62		
DR. MARTIN LUTHER KING JR. (GARAGE)	631		
NORTHSIDE	197		
HIALEAH	338		
OKEECHOBEE	1,398		
PALMETTO	700		
TOTAL	8,916		

(1) Number of spaces could vary each week; shown are available spaces during final week of month.

(2) Averages rounded to nearest unit; no counts effected in September 2020 due to reassignment of staff as result of SARS-CoV-2 pandemic.

Metromover

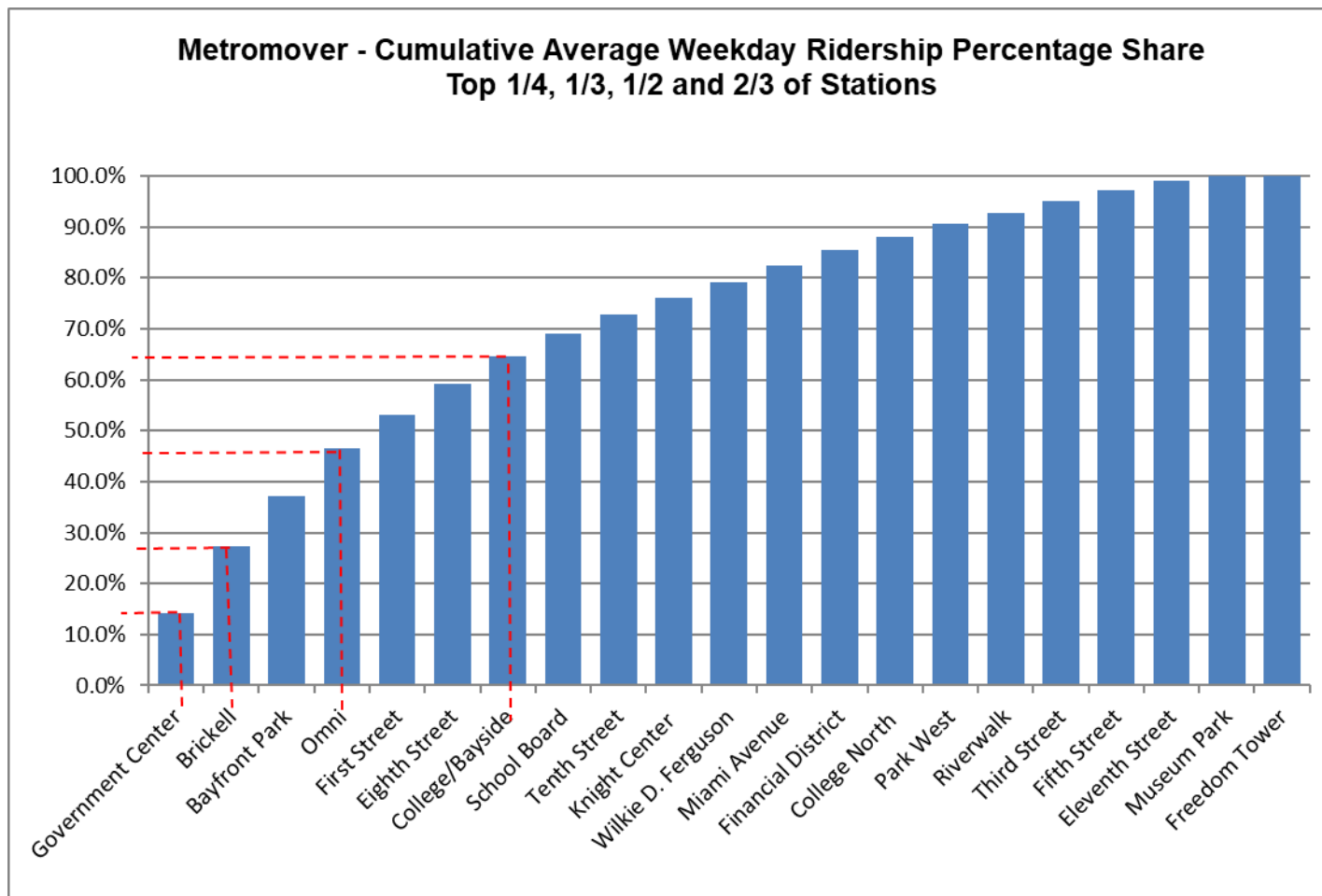


September 2020

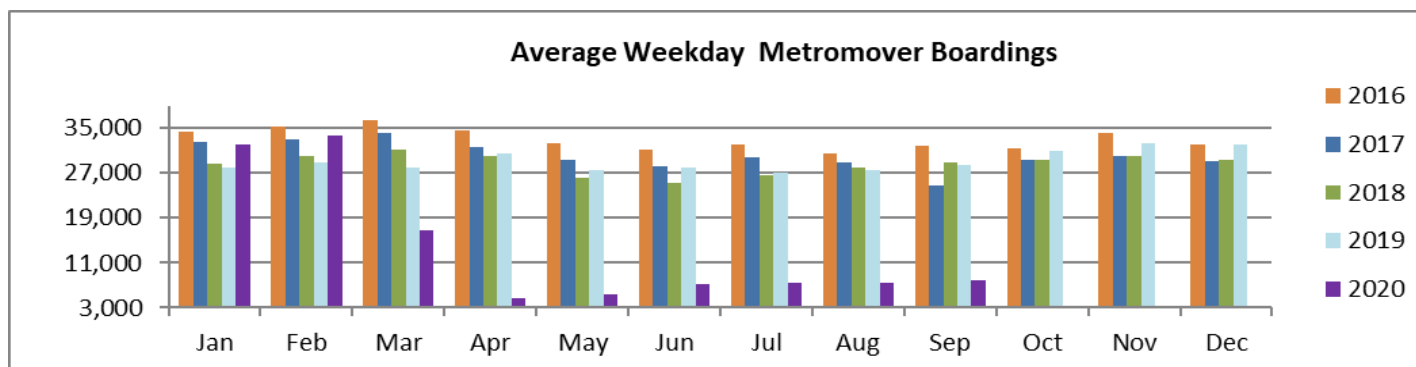
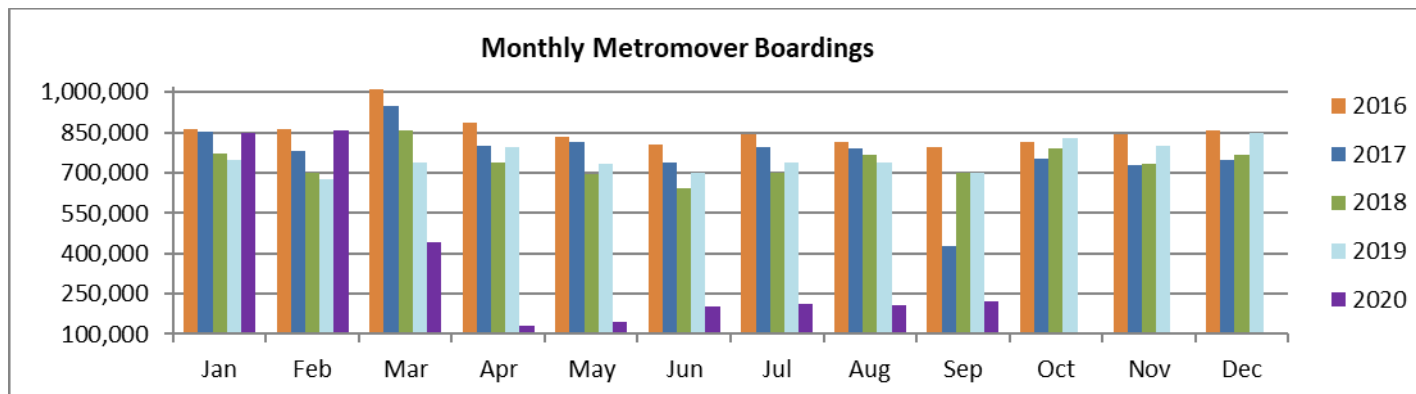
METROMOVER MONTHLY AND AVERAGE DAILY BOARDINGS BY STATION

	Average Weekday	Average Weekday	Percent Change	Average Saturday	Average Saturday	Percent Change	Average Sunday	Average Sunday	Percent Change	Labor Day	Labor Day	Percent Change	Total Monthly	Total Monthly	Percent Change
STATIONS	Sep-20	Sep-19	20 vs 19	Sep-20	Sep-19	20 vs 19	Sep-20	Sep-19	20 vs 19	Sep-20	Sep-19	20 vs 19	Sep-20	Sep-19	20 vs 19
School Board	360	718	-50.0%	302	559	-46.1%	252	495	-49.1%	298	360	-17.2%	10,062	19,440	-48.2%
Omni	737	1,623	-54.6%	625	1,262	-50.5%	544	1,015	-46.5%	593	616	-3.7%	20,740	43,195	-52.0%
Museum Park	75	183	-58.7%	112	253	-55.5%	113	192	-41.0%	100	117	-14.5%	2,587	5,741	-54.9%
Eleventh Street	149	245	-39.4%	105	245	-57.0%	75	191	-61.0%	68	99	-31.3%	3,910	6,943	-43.7%
Park West	198	297	-33.3%	122	317	-61.5%	123	194	-36.8%	98	98	0.0%	5,238	8,279	-36.7%
Freedom Tower		297			402			236			62			8,786	
Government Center	1,143	7,030	-83.7%	874	2,020	-56.7%	724	1,493	-51.5%	695	997	-30.3%	31,078	157,141	-80.2%
Miami Avenue	252	450	-44.0%	195	282	-31.1%	173	226	-23.5%	207	217	-4.6%	6,966	11,477	-39.3%
Third Street	176	315	-43.9%	127	226	-43.9%	124	174	-29.2%	119	96	24.0%	4,824	8,161	-40.9%
Knight Center	261	981	-73.4%	159	447	-64.5%	132	301	-56.1%	141	271	-48.0%	6,782	23,178	-70.7%
Bayfront Park	788	2,871	-72.6%	622	1,806	-65.5%	647	1,503	-57.0%	531	929	-42.8%	22,157	73,088	-69.7%
First Street	524	1,512	-65.3%	430	1,004	-57.2%	357	817	-56.3%				14,147	38,330	-63.1%
College/Bayside	432	2,117	-79.6%	296	1,327	-77.7%	269	1,081	-75.1%		630		11,338	53,678	-78.9%
College North	211	962	-78.1%	109	295	-63.0%	89	185	-52.0%	89	171	-48.0%	5,308	21,520	-75.3%
Wilkie D. Ferguson	253	494	-48.9%	193	266	-27.5%	183	233	-21.5%	172	121	42.1%	6,983	12,237	-42.9%
Riverwalk	186	707	-73.7%	124	422	-70.7%	107	315	-66.1%	119	263	-54.8%	4,950	17,665	-72.0%
Fifth Street	172	490	-65.0%	127	250	-49.3%	98	198	-50.4%	110	161	-31.7%	4,612	11,944	-61.4%
Eighth Street	489	1,990	-75.4%	470	1,581	-70.3%	376	1,184	-68.2%	395	764	-48.3%	14,051	52,802	-73.4%
Tenth Street	301	281	7.0%	242	182	32.8%	221	144	52.7%	222	109	103.7%	8,383	7,176	16.8%
Brickell	1,050	3,639	-71.1%	858	2,241	-61.7%	864	1,787	-51.7%	881	1,073	-17.9%	29,825	91,761	-67.5%
Financial District	247	1,145	-78.4%	83	557	-85.2%	58	403	-85.6%		199		5,755	27,337	-78.9%
TOTAL	8,003	28,346	-71.8%	6,172	15,942	-61.3%	5,526	12,368	-55.3%	4,838	7,353	-34.2%	219,696	699,879	-68.6%

METROMOVER CUMULATIVE PERCENTAGE RIDERSHIP SHARE



TOTAL MONTHLY AND AVERAGE WEEKDAY RIDERSHIP YEAR OVER YEAR COMPARISON CHARTS – METROMOVER



**“TOP 5 / BOTTOM 5” MOVER STATIONS AVERAGE WEEKDAY RIDERSHIP PERFORMANCE
YEAR OVER YEAR COMPARISONS**

Station	Sep-20	Sep-19	Absolute Delta (1)	Percent Delta
Tenth Street	301	281	20	7.0%
Eleventh Street	149	245	-97	-39.4%
Park West	198	297	-99	-33.3%
Museum Park	75	183	-107	-58.7%
Third Street	176	315	-138	-43.9%

Government Center	1,143	7,030	-5,887	-83.7%
Brickell	1,050	3,639	-2,589	-71.1%
Bayfront Park	788	2,871	-2,083	-72.6%
College/Bayside	432	2,117	-1,685	-79.6%
Eighth Street	489	1,990	-1,501	-75.4%

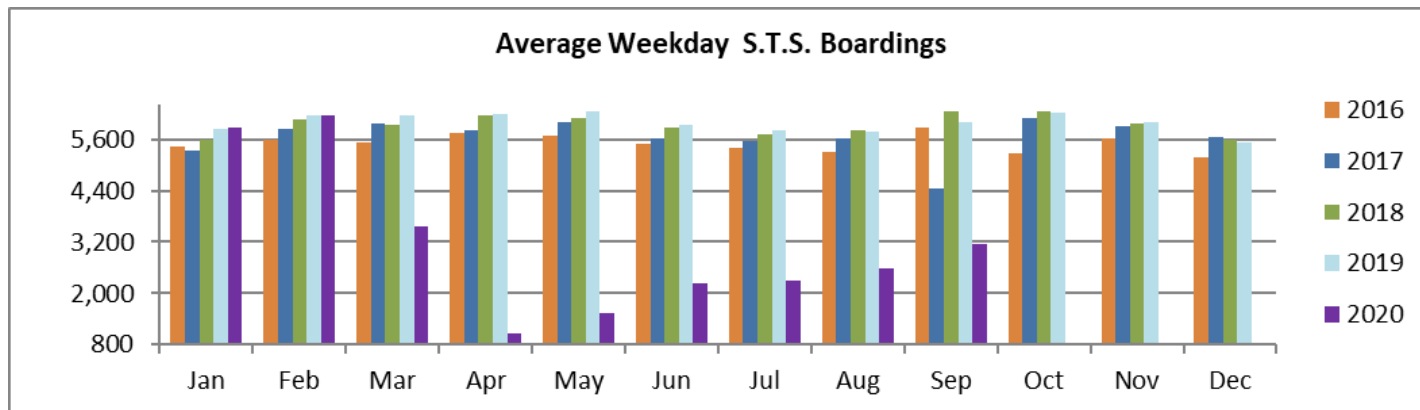
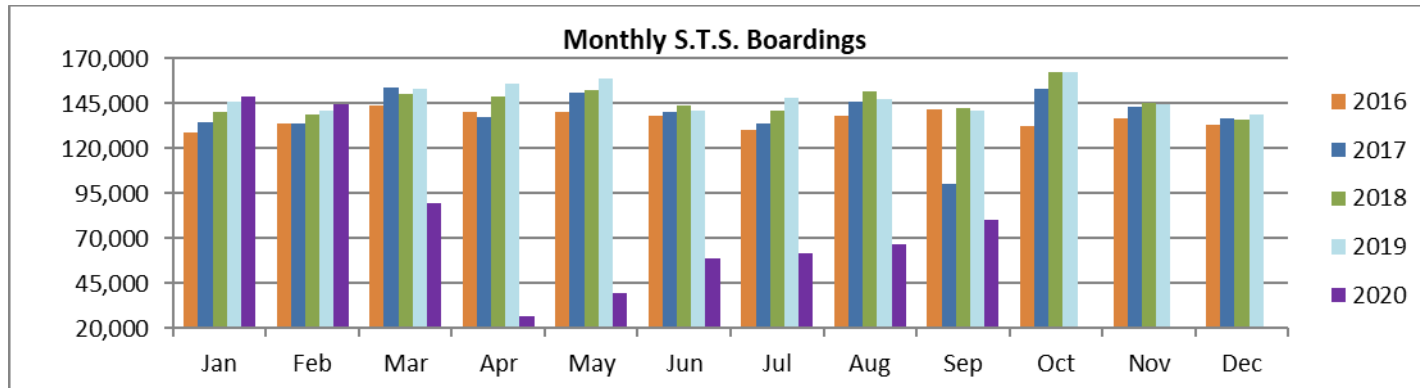
(1) Averages rounded to the nearest boarding.

(†) All but one Metromover stations reported net losses in September 2020, due to effects on ridership from the SARS-CoV-2 pandemic.

Special Transportation Services



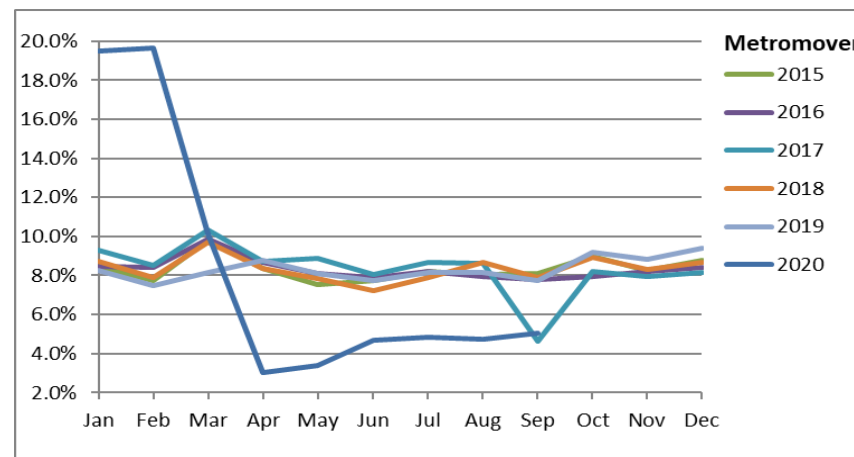
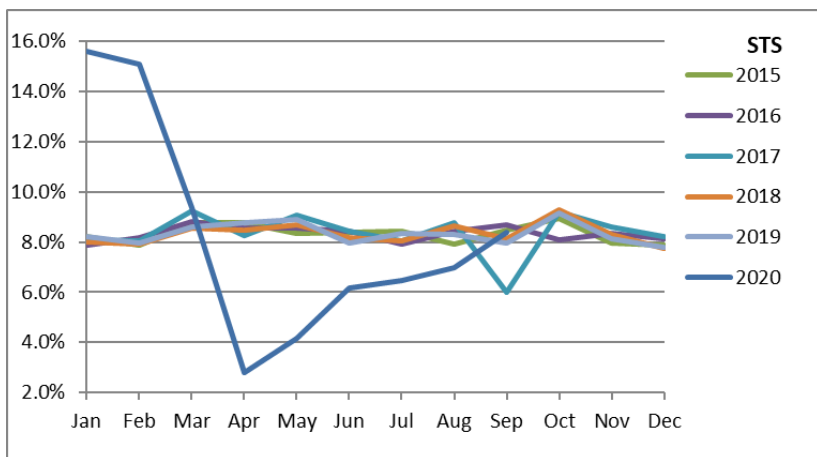
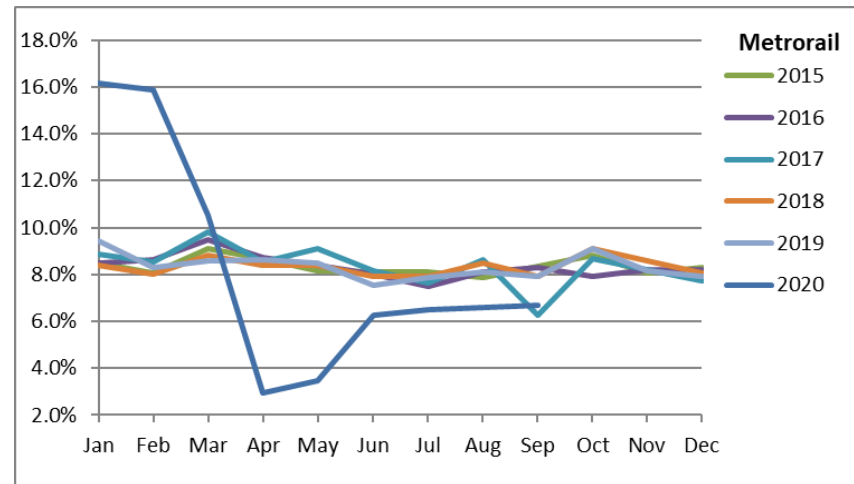
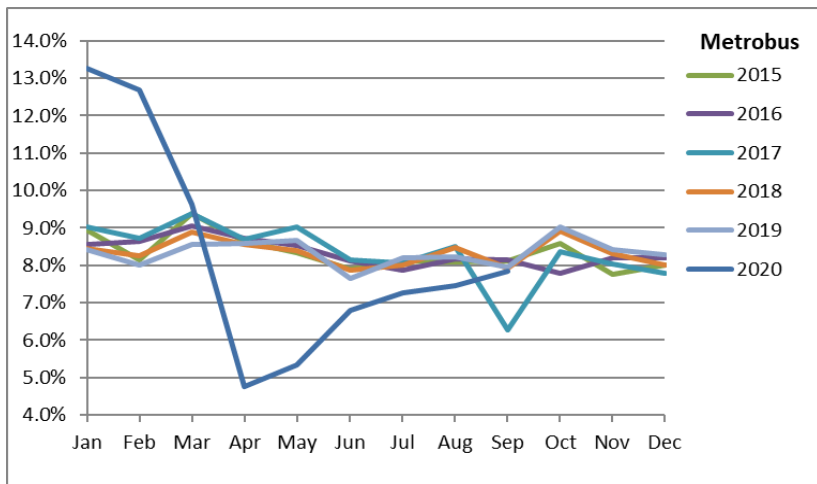
TOTAL MONTHLY AND AVERAGE WEEKDAY RIDERSHIP YEAR OVER YEAR COMPARISON CHARTS – SPECIAL TRANSPORTATION SERVICES (S.T.S.)



Ridership Seasonality



RIDERSHIP SEASONALITY – PERCENT RIDERSHIP SHARE BY MONTH AND CALENDAR YEAR FOR EACH MODE



Note: the prominent dips seen in the fall of 2017 and in the spring and summer of 2020 are due to Hurricane Irma and the SARS-CoV-2 pandemic, respectively.