



TRANSPORTATION AND PUBLIC WORKS

RIDERSHIP TECHNICAL REPORT

Division of Performance and Materials Management



October 2020

Table of Contents

<i>Table of Contents</i>	2-3
All Modes Overview	4
Total Monthly Weekday, Saturday and Sunday Monthly Boardings By Mode	5
Average Weekday, Saturday and Sunday Boardings by Mode	6
All-Modes Combined Total Monthly Ridership Comparisons By Fiscal Year	7
All Modes Combined Total Monthly and Average Weekday Ridership – Year over Year Comparison Charts	8
Metrobus Total Monthly Ridership Comparisons by Fiscal Year	9
Metrorail Total Monthly Ridership Comparisons by Fiscal Year	10
Metromover Total Monthly Ridership Comparisons by Fiscal Year	11
STS Total Monthly Ridership Comparisons by Fiscal Year	12
Average Weekday Ridership – Modal Splits	13
Metrobus	14
Monthly and Average Daily Bus Boardings by Route	15-18
Metrobus Holiday Boardings By Route	19
Bus Ridership by Service Type	20-21
Bus Routes as Ranked by Percentage of Average Weekday Ridership	22
Metrobus Cumulative Percentage Average Weekday Ridership Share by Route (Top 75%)	23
Total Monthly and Average Weekday Rail Ridership – Year over Year Comparison Charts	24

Table of Contents (continued)

Metrobus (Continued)

Bus “Top 5 / Bottom 5” Routes Average Weekday Ridership Performance 25

Metrobus Parking Patronage Summary 26

Metrorail 27

Monthly and Average Daily Rail Boardings by Station 28

Metrorail Holiday Boardings by Station 29

Metrorail Cumulative Percentage Average Weekday Ridership Share 30

Total Monthly and Average Weekday Rail Ridership – Year over Year Comparison Charts 31

“Top 5 / Bottom 5” Stations Average Weekday Ridership Performance 32

Metrorail Parking Patronage Summary 33

Metromover 34

Monthly and Average Daily Mover Boardings by Station 35

Metromover Cumulative Percentage Average Weekday Ridership Share 36

Total Monthly and Average Weekday Mover Ridership – Year over Year Comparison Charts 37

“Top 5 / Bottom 5” Stations Average Weekday Ridership Performance 38

Special Transportation Services (STS) 39

Total Monthly and Average Weekday STS Ridership – Year over Year Comparison Charts 40

Ridership Seasonality 41

Ridership Seasonality – Percent Ridership Share by Month and Calendar year for Each Mode 42

All Modes Overview



TOTAL MONTHLY WEEKDAY, SATURDAY AND SUNDAY BOARDINGS BY MODE October 2020

TRAVEL MODE	MONTH'S TOTAL WEEKDAYS RIDERSHIP	MONTH'S TOTAL SATURDAYS RIDERSHIP	MONTH'S TOTAL SUNDAYS RIDERSHIP	TOTAL MONTHLY RIDERSHIP	% CHANGE vs Oct 2019 TOTAL MONTH RIDERSHIP
METROBUS	2,259,004	332,110	214,025	2,805,139	-37.8%
METRORAIL	632,680	84,059	52,786	769,525	-53.2%
METROMOVER	191,564	34,963	23,517	250,044	-69.9%
STS	81,628	10,121	5,639	97,388	-40.1%
TOTAL	3,164,876	461,253	295,967	3,922,096	-45.1%

(*) October 12, 2020 (Columbus Day Holiday) ridership was as follows:

Metrobus	88,416
Metrorail	26,653
Metromover	7,694
STS	3,333

- (1) As a result of the SARS-CoV-2 pandemic, Metrobus rides became fare-free on March 22, 2020; consequently, NextFare System farebox data was replaced by bus automatic passenger counter data starting on that date.
- (2) As a result of the SARS-CoV-2 pandemic, Metrorail rides became fare-free on March 22, 2020; consequently, NextFare System faregate data was replaced manually-counted data and other estimates starting on that date.
- (3) Beginning March 13, 2020 (day of National Emergency Declaration due to SARS-CoV-2 pandemic), only raw data from Metromover automatic passenger counters is reported; no estimates are performed after March 13, 2020.
- (4) Paratransit ridership data as reported by the contractor.

AVERAGE WEEKDAY, SATURDAY AND SUNDAY BOARDINGS BY MODE
October 2020

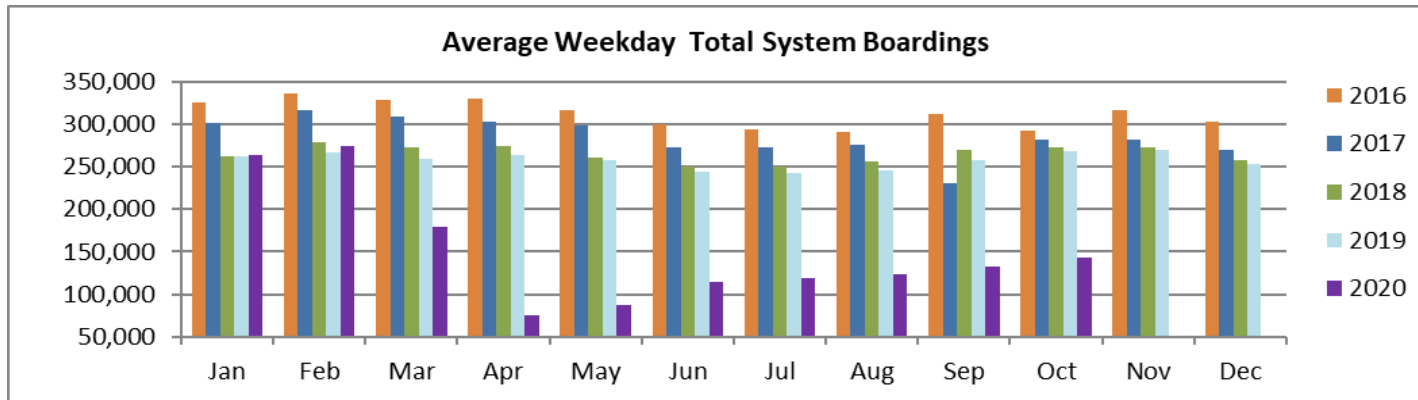
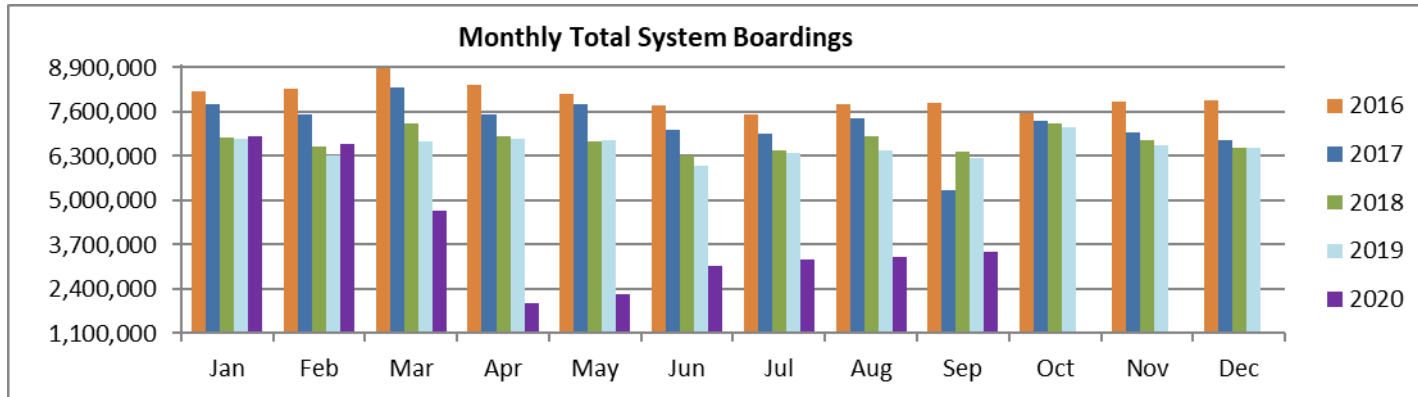
Travel Mode	Average Weekday	Average Saturday	Average Sunday	% Change Oct 2019 Weekday	% Change Oct 2019 Saturday	% Change Oct 2019 Sunday
METROBUS	102,741	66,422	53,506	-38.2%	-31.4%	-28.0%
METRORAIL	28,858	16,812	13,197	-55.3%	-30.5%	-28.5%
METROMOVER	8,756	6,993	5,879	-71.7%	-61.1%	-57.9%
STS	3,710	2,024	1,410	-40.4%	-24.2%	-36.0%
Totals (1)	144,065	92,251	73,992	-46.2%	-34.9%	-32.0%

(*) Average weekday ridership includes Columbus Day (10/12/20) for Metrobus and STS, but excludes it for Metrorail and Metromover

ALL-MODES COMBINED TOTAL MONTHLY RIDERSHIP COMPARISONS BY FISCAL YEAR

All Modes Month	FY 17	FY 18	FY 19	FY 20	FY 21	17 TO 18	18 TO 19	19 TO 20	20 TO 21	17 TO 21
Oct	7,543,706	7,322,886	7,265,208	7,144,116	3,922,096	-2.9%	-0.8%	-1.7%	-45.1%	-48.0%
Nov	7,894,500	7,005,032	6,783,315	6,610,671		-11.3%	-3.2%	-2.5%		
Dec	7,919,860	6,783,192	6,538,734	6,549,392		-14.4%	-3.6%	0.2%		
Jan	7,814,784	6,834,741	6,797,602	6,890,225		-12.5%	-0.5%	1.4%		
Feb	7,505,125	6,591,531	6,312,033	6,671,991		-12.2%	-4.2%	5.7%		
Mar	8,317,082	7,244,805	6,712,624	4,694,315		-12.9%	-7.3%	-30.1%		
Apr	7,513,151	6,869,802	6,802,085	1,989,545		-8.6%	-1.0%	-70.8%		
May	7,841,691	6,742,402	6,755,829	2,258,413		-14.0%	0.2%	-66.6%		
Jun	7,069,455	6,318,979	6,026,467	3,082,213		-10.6%	-4.6%	-48.9%		
Jul	6,969,807	6,449,526	6,402,110	3,272,074		-7.5%	-0.7%	-48.9%		
Aug	7,408,607	6,879,929	6,460,375	3,335,847		-7.1%	-6.1%	-48.4%		
Sep	5,284,604	6,412,945	6,240,212	3,501,209		21.4%	-2.7%	-43.9%		
FY Total	89,082,372	81,455,770	79,096,594	56,000,011		-8.6%	-2.9%	-29.2%		

TOTAL MONTHLY AND AVERAGE WEEKDAY RIDERSHIP YEAR OVER YEAR COMPARISON CHARTS – ALL MODES COMBINED



METROBUS TOTAL MONTHLY RIDERSHIP COMPARISONS BY FISCAL YEAR

Bus	FY 17	FY 18	Variance 17 to 18	FY 19	Variance 18 to 19	FY 20	Variance 19 to 20	FY 21	Variance 20 to 21	Variance 17 to 21
Oct	4,925,781	4,709,590	-4.4%	4,554,886	-3.3%	4,507,012	-1.1%	2,805,139	-37.8%	-43.1%
Nov	5,181,524	4,522,250	-12.7%	4,245,535	-6.1%	4,197,225	-1.1%			
Dec	5,192,692	4,380,099	-15.6%	4,081,581	-6.8%	4,126,990	1.1%			
Jan	5,084,085	4,307,001	-15.3%	4,195,911	-2.6%	4,316,998	2.9%			
Feb	4,914,307	4,208,811	-14.4%	3,994,019	-5.1%	4,123,083	3.2%			
Mar	5,287,813	4,534,564	-14.2%	4,266,768	-5.9%	3,136,162	-26.5%			
Apr	4,895,697	4,360,997	-10.9%	4,291,135	-1.6%	1,544,316	-64.0%			
May	5,087,877	4,277,628	-15.9%	4,330,922	1.2%	1,734,609	-59.9%			
Jun	4,586,556	4,009,340	-12.6%	3,823,863	-4.6%	2,210,725	-42.2%			
Jul	4,539,259	4,080,664	-10.1%	4,094,906	0.3%	2,366,749	-42.2%			
Aug	4,780,589	4,326,980	-9.5%	4,109,613	-5.0%	2,422,014	-41.1%			
Sep	3,524,818	4,041,992	14.7%	3,971,220	-1.8%	2,546,923	-35.9%			
FY Total	58,000,998	51,759,916	-10.8%	49,960,359	-3.5%	37,232,806	-25.5%			

METRORAIL TOTAL MONTHLY RIDERSHIP COMPARISONS BY FISCAL YEAR

Rail	FY 17	FY 18	Variance 17 to 18	FY 19	Variance 18 to 19	FY 20	Variance 19 to 20	FY 21	Variance 20 to 21	Variance 17 to 21
Oct	1,670,933	1,708,564	2.3%	1,757,225	2.8%	1,643,166	-6.5%	769,525	-53.2%	-53.9%
Nov	1,734,267	1,609,888	-7.2%	1,656,929	2.9%	1,469,448	-11.3%			
Dec	1,734,768	1,517,341	-12.5%	1,553,804	2.4%	1,433,928	-7.7%			
Jan	1,743,638	1,615,576	-7.3%	1,708,695	5.8%	1,576,340	-7.7%			
Feb	1,676,215	1,545,581	-7.8%	1,501,458	-2.9%	1,549,118	3.2%			
Mar	1,926,434	1,700,714	-11.7%	1,554,851	-8.6%	1,027,319	-33.9%			
Apr	1,677,459	1,619,890	-3.4%	1,559,446	-3.7%	287,803	-81.5%			
May	1,787,885	1,618,504	-9.5%	1,531,597	-5.4%	337,696	-78.0%			
Jun	1,605,234	1,524,311	-5.0%	1,359,966	-10.8%	608,758	-55.2%			
Jul	1,500,243	1,527,380	1.8%	1,419,158	-7.1%	632,964	-55.4%			
Aug	1,693,524	1,632,471	-3.6%	1,463,646	-10.3%	641,275	-56.2%			
Sep	1,234,135	1,530,088	24.0%	1,427,726	-6.7%	654,244	-54.2%			
Total	19,984,735	19,150,308	-4.2%	18,494,501	-3.4%	11,862,059	-35.9%			

METROMOVER TOTAL MONTHLY RIDERSHIP COMPARISONS BY FISCAL YEAR

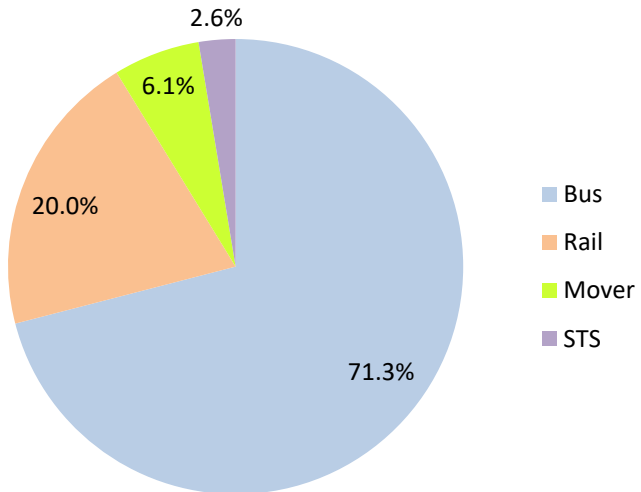
Mover	FY 17	FY 18	Variance 17 to 18	FY 19	Variance 18 to 19	FY 20	Variance 19 to 20	FY 21	Variance 20 to 21	Variance 17 to 21
Oct	814,781	751,323	-7.8%	790,533	5.2%	831,234	5.1%	250,044	-69.9%	-69.3%
Nov	841,679	729,519	-13.3%	735,198	0.8%	799,632	8.8%			
Dec	858,961	748,797	-12.8%	767,239	2.5%	849,832	10.8%			
Jan	852,788	772,122	-9.5%	746,728	-3.3%	847,773	13.5%			
Feb	780,514	698,107	-10.6%	675,160	-3.3%	855,398	26.7%			
Mar	949,045	859,143	-9.5%	737,814	-14.1%	441,200	-40.2%			
Apr	802,778	740,036	-7.8%	795,696	7.5%	130,549	-83.6%			
May	814,791	694,106	-14.8%	734,645	5.8%	146,454	-80.1%			
Jun	737,042	641,675	-12.9%	701,318	9.3%	203,637	-71.0%			
Jul	796,649	700,462	-12.1%	739,814	5.6%	210,596	-71.5%			
Aug	788,734	768,728	-2.5%	739,785	-3.8%	205,995	-72.2%			
Sep	425,641	698,505	64.1%	699,879	0.2%	219,696	-68.6%			
Total	9,463,403	8,802,523	-7.0%	8,863,809	0.7%	5,741,996	-35.2%			

SPECIAL TRANSPORTATION SERVICES (STS) TOTAL MONTHLY RIDERSHIP COMPARISONS BY FISCAL YEAR

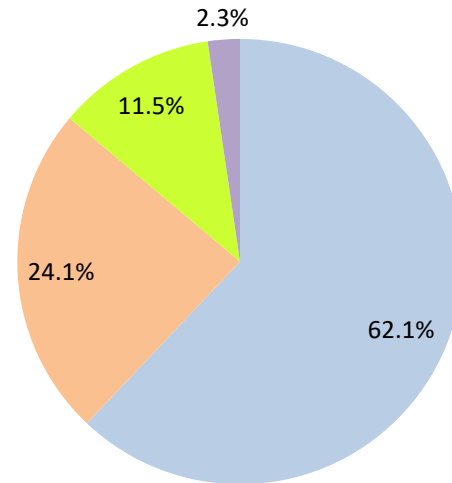
STS	FY 17	FY 18	Variance 17 to 18	FY 19	Variance 18 to 19	FY 20	Variance 19 to 20	FY 21	Variance 20 to 21	Variance 17 to 21
Oct	132,211	153,409	16.0%	162,564	6.0%	162,704	0.1%	97,388	-40.1%	-26.3%
Nov	137,030	143,375	4.6%	145,653	1.6%	144,366	-0.9%			
Dec	133,439	136,955	2.6%	136,110	-0.6%	138,642	1.9%			
Jan	134,273	140,042	4.3%	146,268	4.4%	149,114	1.9%			
Feb	134,089	139,032	3.7%	141,396	1.7%	144,392	2.1%			
Mar	153,790	150,384	-2.2%	153,191	1.9%	89,634	-41.5%			
Apr	137,217	148,879	8.5%	155,808	4.7%	26,877	-82.7%			
May	151,138	152,164	0.7%	158,665	4.3%	39,654	-75.0%			
Jun	140,623	143,653	2.2%	141,320	-1.6%	59,093	-58.2%			
Jul	133,656	141,020	5.5%	148,232	5.1%	61,765	-58.3%			
Aug	145,760	151,750	4.1%	147,331	-2.9%	66,563	-54.8%			
Sep	100,010	142,360	42.3%	141,387	-0.7%	80,346	-43.2%			
Total	1,633,236	1,743,023	6.7%	1,777,925	2.0%	1,163,150	-34.6%			

AVERAGE WEEKDAY RIDERSHIP - MODAL SPLITS

October 2020



October 2019



Metrobus



METROBUS MONTHLY AND AVERAGE DAILY BOARDINGS BY ROUTE

Route	Average Weekday	Average Weekday	Percent Change	Average Saturday	Average Saturday	Percent Change	Average Sunday	Average Sunday	Percent Change	Total Monthly	Total Monthly	Percent Change
	Oct-20	Oct-19	20 vs 19	Oct-20	Oct-19	20 vs 19	Oct-20	Oct-19	20 vs 19	Oct-20	Oct-19	20 vs 19
1 (*)	217	268	-19.1%	185	262	-29.3%	143	209	-31.7%	6,270	8,049	-22.1%
2	1,733	2,529	-31.5%	1,112	1,490	-25.4%	814	1,111	-26.7%	46,950	68,570	-31.5%
3	3,394	4,945	-31.4%	3,226	5,352	-39.7%	2,685	4,365	-38.5%	101,538	152,608	-33.5%
7	2,148	3,299	-34.9%	1,224	1,944	-37.0%	1,049	1,543	-32.0%	57,562	89,828	-35.9%
8	2,877	3,804	-24.4%	1,941	2,038	-4.7%	1,529	1,682	-9.1%	79,110	102,362	-22.7%
9	4,295	5,426	-20.8%	2,494	3,230	-22.8%	1,995	2,533	-21.2%	114,936	147,848	-22.3%
10	1,069	2,219	-51.8%	1,501	1,834	-18.1%	942	1,422	-33.7%	34,799	64,064	-45.7%
11	5,124	7,135	-28.2%	3,717	5,705	-34.8%	2,578	3,852	-33.1%	141,633	202,332	-30.0%
12	2,065	2,767	-25.4%							45,426	63,630	-28.6%
16	1,073	1,761	-39.0%	1,045	1,488	-29.8%	638	881	-27.6%	31,386	49,970	-37.2%
17	2,387	3,837	-37.8%	1,776	2,538	-30.0%	1,274	1,729	-26.3%	66,499	105,317	-36.9%
19	818	1,593	-48.7%							17,991	36,643	-50.9%
21	1,539	1,856	-17.1%							33,859	42,696	-20.7%
22	1,887	3,773	-50.0%	1,573	2,127	-26.0%	1,050	1,621	-35.2%	53,579	101,764	-47.3%
24 - Coral Way Limited	1,221	1,795	-32.0%	696	1,213	-42.6%	683	940	-27.4%	33,067	49,909	-33.7%
27	3,913	6,819	-42.6%	3,236	4,378	-26.1%	2,633	3,052	-13.7%	112,796	186,566	-39.5%
29 (*)	309	632	-51.2%							6,789	14,533	-53.3%
31 - BUSWAY LOCAL	663	1,081	-38.6%	830	941	-11.8%	647	655	-1.3%	21,328	31,245	-31.7%
32	1,574	2,432	-35.3%	737	1,059	-30.4%	490	786	-37.6%	40,265	63,304	-36.4%
33	705	1,771	-60.2%	668	1,026	-34.9%	424	654	-35.1%	20,549	47,463	-56.7%
34 EXPRESS (*)	771	1,948	-60.4%							16,965	44,795	-62.1%
35 (*)	1,632	2,738	-40.4%	1,012	1,169	-13.5%	871	853	2.1%	44,453	71,063	-37.4%
36	1,756	2,463	-28.7%	1,277	1,436	-11.1%	1,037	1,174	-11.7%	49,164	67,083	-26.7%
37	2,162	3,344	-35.3%	1,544	2,336	-33.9%	1,202	1,783	-32.6%	60,100	93,383	-35.6%
38	3,877	6,605	-41.3%	2,750	4,907	-44.0%	2,705	4,091	-33.9%	109,862	187,914	-41.5%
39 EXPRESS (*)	195	953	-79.5%							4,292	21,910	-80.4%

METROBUS MONTHLY AND AVERAGE DAILY BOARDINGS BY ROUTE

Route	Average Weekday	Average Weekday	Percent Change	Average Saturday	Average Saturday	Percent Change	Average Sunday	Average Sunday	Percent Change	Total Monthly	Total Monthly	Percent Change
	Oct-20	Oct-19	20 vs 19	Oct-20	Oct-19	20 vs 19	Oct-20	Oct-19	20 vs 19	Oct-20	Oct-19	20 vs 19
40	1,059	1,705	-37.9%	482	707	-31.7%	360	501	-28.2%	27,146	44,044	-38.4%
42	513	854	-40.0%	486	560	-13.2%	307	363	-15.3%	14,935	23,323	-36.0%
46 - LIBERTY CITY CONN. (*)	15	36	-59.9%							321	837	-61.6%
51 - FLAGLER MAX	1,835	3,125	-41.3%							40,366	71,878	-43.8%
52	721	1,267	-43.1%	568	693	-18.0%	362	511	-29.1%	20,160	33,968	-40.7%
54	2,188	3,022	-27.6%	1,281	1,744	-26.5%	1,139	1,210	-5.8%	59,100	81,312	-27.3%
56 (*)	168	363	-53.6%							3,703	8,344	-55.6%
57 (*)	229	440	-48.0%							5,031	10,115	-50.3%
62	1,522	1,918	-20.7%	1,249	1,400	-10.7%	746	887	-15.9%	42,714	53,264	-19.8%
71 (*)	303	686	-55.8%	135	269	-49.9%	142	140	1.3%	7,901	17,403	-54.6%
72 (*)	363	744	-51.1%	230	313	-26.5%	173	237	-27.2%	9,834	19,305	-49.1%
73	1,245	2,156	-42.2%	626	1,011	-38.0%	345	508	-32.2%	31,909	55,673	-42.7%
75	639	1,578	-59.5%	349	459	-23.8%	256	266	-3.9%	16,834	39,197	-57.1%
77	4,722	7,342	-35.7%	2,806	4,324	-35.1%	2,327	2,963	-21.5%	127,231	198,022	-35.7%
82 - WESTCHESTER CIRC. (*)	22	58	-61.9%	25	50	-50.0%				615	1,543	-60.1%
87	875	1,496	-41.5%	335	504	-33.5%	259	307	-15.7%	21,960	37,648	-41.7%
88	1,503	2,058	-27.0%	1,028	1,714	-40.0%	784	1,224	-35.9%	41,350	59,093	-30.0%
93 - BISCAYNE MAX	1,480	3,339	-55.7%							32,562	76,791	-57.6%
95 EXPRESS (*)	353	1,875	-81.2%							7,759	43,125	-82.0%
99	910	1,471	-38.1%	742	922	-19.5%	452	741	-39.0%	25,531	40,476	-36.9%
101 - A (*)	97	150	-34.9%	54	68	-20.0%	35	41	-14.0%	2,555	3,875	-34.1%
102 - B	531	1,657	-68.0%	445	785	-43.4%	474	719	-34.1%	15,796	44,119	-64.2%
103 - C	103	422	-75.7%	161	245	-34.4%	115	162	-29.3%	3,523	11,336	-68.9%
104	357	956	-62.7%	83	533	-84.5%	122	343	-64.5%	8,754	25,496	-65.7%
105 - E	617	1,205	-48.8%	396	680	-41.8%	488	616	-20.8%	17,511	32,893	-46.8%

METROBUS MONTHLY AND AVERAGE DAILY BOARDINGS BY ROUTE

Route	Average Weekday	Average Weekday	Percent Change	Average Saturday	Average Saturday	Percent Change	Average Sunday	Average Sunday	Percent Change	Total Monthly	Total Monthly	Percent Change
	Oct-20	Oct-19	20 vs 19	Oct-20	Oct-19	20 vs 19	Oct-20	Oct-19	20 vs 19	Oct-20	Oct-19	20 vs 19
107 - G	935	1,698	-44.9%	627	1,086	-42.3%	607	880	-31.0%	26,126	46,917	-44.3%
108 - H	235	451	-47.9%	275	405	-32.2%	269	346	-22.1%	7,623	13,385	-43.0%
110 - J	1,865	2,616	-28.7%	1,364	1,983	-31.2%	1,185	1,519	-22.0%	52,594	74,168	-29.1%
112 - L	6,068	7,447	-18.5%	4,726	6,120	-22.8%	3,672	4,693	-21.8%	171,804	214,529	-19.9%
113 - M	304	781	-61.0%	258	472	-45.4%	201	374	-46.4%	8,788	21,345	-58.8%
115 (*)	211	142	48.5%	138	76	81.5%	89	76	16.1%	5,680	3,872	46.7%
119 - S	6,618	8,437	-21.6%	4,352	7,178	-39.4%	4,938	6,834	-27.7%	187,108	250,096	-25.2%
120 - BEACH MAX	4,240	6,266	-32.3%	3,130	4,707	-33.5%	1,999	3,463	-42.3%	116,927	176,787	-33.9%
132 TRI-RAIL (DORAL)	15	8	105.5%							340	173	96.5%
135 (*)	690	1,333	-48.3%	310	510	-39.2%	235	362	-34.9%	17,660	34,140	-48.3%
136	71	144	-51.1%							1,552	3,316	-53.2%
137 - WEST DADE CONN.	852	1,605	-46.9%	674	1,032	-34.6%	494	856	-42.3%	24,090	44,468	-45.8%
150 - MIAMI BEACH AIRPORT FLYER (*)	864	1,640	-47.3%	877	1,494	-41.3%	901	1,410	-36.1%	26,987	49,335	-45.3%
155 - BISCAYNE GARDENS CIRCULATOR (*)	33	44	-24.9%							731	1,018	-28.2%
183	2,117	3,018	-29.8%	1,272	1,783	-28.6%	1,124	1,380	-18.6%	57,426	82,054	-30.0%
200 - CUTLER BAY LOCAL	63	160	-60.6%	36	122	-70.4%	34	51	-33.2%	1,707	4,383	-61.1%
202 - LITTLE HAITI CONN. (*)	105	138	-23.7%	90	67	34.6%	81	43	91.2%	3,086	3,602	-14.3%
207 (7st) - LITTLE HAVANA CIRC	1,034	1,522	-32.0%	626	956	-34.6%	675	706	-4.4%	28,579	41,645	-31.4%
208 (8st) - LITTLE HAVANA CIRC	1,030	1,433	-28.1%	808	1,044	-22.6%	609	967	-37.0%	29,131	41,006	-29.0%
210 - SKYLAKE CIRC (*)	211	283	-25.4%	181	148	22.0%	96	172	-44.3%	5,930	7,785	-23.8%
211 - OVERTOWN CIRC. (*)	35	68	-48.4%							775	1,569	-50.6%
212 - SWEETWATER CIRC. (*)	21	38	-44.7%							465	879	-47.1%
217 - BUNCHE PARK CIRC (*)	76	85	-10.6%							1,669	1,952	-14.5%
238 EAST/WEST CONN.	217	519	-58.3%							4,764	11,945	-60.1%

METROBUS MONTHLY AND AVERAGE DAILY BOARDINGS BY ROUTE

Route	Average Weekday	Average Weekday	Percent Change	Average Saturday	Average Saturday	Percent Change	Average Sunday	Average Sunday	Percent Change	Total Monthly	Total Monthly	Percent Change
	Oct-20	Oct-19	20 vs 19	Oct-20	Oct-19	20 vs 19	Oct-20	Oct-19	20 vs 19	Oct-20	Oct-19	20 vs 19
246 - NIGHT OWL	1	93	-99.3%	4	86	-95.1%		82		36	2,816	-98.7%
248 - PRINCETON CIRCULATOR (*)	71	104	-31.3%							1,565	2,382	-34.3%
252 - CORAL REEF MAX	261	861	-69.7%	218	317	-31.3%	145	248	-41.5%	7,416	22,064	-66.4%
254 - BROWNSVILLE CIRC. (*)	11	17	-34.2%							243	386	-37.0%
267 - LUDLAM LIMITED (*)	88	132	-33.3%							1,931	3,028	-36.2%
272 SUNSET KAT (*)	218	551	-60.4%							4,795	12,674	-62.2%
277 - 7th AVENUE MAX	491	627	-21.8%							10,792	14,421	-25.2%
286 - NORTH POINTE CIRC. (*)	35	86	-59.7%	33	39	-15.9%				926	2,134	-56.6%
287 - SAGA BAY MAX	122	321	-62.2%							2,673	7,384	-63.8%
297-27th AVENUE ORANGE MAX	759	1,337	-43.2%							16,691	30,746	-45.7%
301 DADE-MONROE EXPRESS (*)	773	807	-4.2%	801	819	-2.2%	740	739	0.2%	23,977	24,789	-3.3%
302 CARD SOUND EXPRESS (*)	53	70	-24.7%	38	54	-29.6%	32	57	-43.6%	1,474	2,048	-28.0%
338 - WEEKEND EXPRESS				79	224	-64.8%	86	172	-49.9%	739	1,583	-53.3%
344 (*)	66	125	-47.0%							1,456	2,874	-49.3%
500	35	34	5.2%	43	46	-7.5%	41	40	0.6%	1,155	1,120	3.1%
12/21 WEEKEND INTERL.				1,419	2,569	-44.8%	985	2,124	-53.6%	11,031	18,771	-41.2%
GREEN HILLS SHUTTLE (*)	9	7	42.3%							37	26	42.3%
KINGS CREEK SHUTTLE (*)	10	21	-54.3%							48	105	-54.3%
SIERRA LAKES SHUTTLE (*)	17	25	-32.8%							84	100	-16.0%
ROBERT SHARP SHUTTLE (*)	20	5	316.7%							80	24	233.3%
AHEPA SHUTTLE (*)	18	22	-17.1%							92	111	-17.1%
FEDERATION GARDENS SHUTTLE (*)				17	23	-24.3%				87	92	-5.4%
Total (†)	102,741	166,269	-38.2%	66,422	96,809	-31.4%	53,506	74,263	-28.0%	2,805,139	4,507,012	-37.8%

(1) Includes shuttles and those routes which were not run both years.

(2) Nearly every bus route experienced year-over-year losses as a result of the SARS-CoV-2 pandemic; rides were fare-free beginning March 22, 2020.

(*) The following routes are entirely operated under contract: 1, 29, 34, 35, 39, 46, 56, 57, 71, 72, 82, 95, 101-A, 115, 135, 150, 155, 202, 210, 211, 212, 217, 248, 254, 267, 272, 286, 301, 302 and 344, although some supplemental runs may be performed by DTPW. Conversely, a few routes that are nominally run by DTPW may have a few supplemental runs operated by contractors; Dade-Monroe routes 301 and 302 as well as six Lifeline routes are also under contracted operation.

(†) Not shown are several express routes were suspended at the end of March or the beginning of April 2020, due to the SARS-CoV-2 pandemic, while other routes had alignment and schedule modifications made to them, in an ongoing effort to optimize service delivery; the September 2019 totals include those routes.

METROBUS HOLIDAY BOARDINGS BY ROUTE

Columbus Day Holiday

ROUTES	Columbus Day 2019	Columbus Day 2020	Pct Delta	ROUTES	Columbus Day 2019	Columbus Day 2020	Pct Delta	ROUTES	Columbus Day 2019	Columbus Day 2020	Pct Delta
1	245	222	-9.4%	56	341	133	-61.0%	155	54	41	-24.1%
2	2,433	1,747	-28.2%	57	414	211	-49.0%	183	3,057	2,162	-29.3%
3	4,753	2,612	-45.0%	62	1,954	888	-54.6%	200	173	0	-100.0%
7	3,329	2,078	-37.6%	71	656	262	-60.1%	202	160	120	-25.0%
8	3,746	2,248	-40.0%	72	759	320	-57.8%	207	1,612	653	-59.5%
9	5,354	3,867	-27.8%	73	2,033	1,114	-45.2%	208	1,552	486	-68.7%
10	2,383	910	-61.8%	75	1,625	788	-51.5%	210	287	274	-4.5%
11	7,054	4,191	-40.6%	77	7,639	4,277	-44.0%	211	77	25	-67.5%
12	2,607	2,021	-22.5%	82	76	22	-71.1%	212	41	10	-75.6%
16	1,749	922	-47.3%	87	1,300	662	-49.1%	217	87	18	-79.3%
17	3,684	2,432	-34.0%	88	2,100	1,523	-27.5%	246	96	0	-100.0%
19	1,556	616	-60.4%	93	3,252	1,223	-62.4%	248	109	68	-37.6%
21	1,857	912	-50.9%	95	960	223	-76.8%	252	828	273	-67.0%
22	3,837	1,561	-59.3%	99	1,401	770	-45.0%	254	18	10	-44.4%
24	1,776	900	-49.3%	101	160	93	-41.9%	267	124	85	-31.5%
27	6,532	2,987	-54.3%	102	1,695	617	-63.6%	272	570	208	-63.5%
29	612	321	-47.5%	103	381	153	-59.8%	277	497	480	-3.4%
31	895	564	-37.0%	104	988	320	-67.6%	286	62	30	-51.6%
32	2,399	1,498	-37.6%	105	1,160	714	-38.4%	287	307	74	-75.9%
33	1,802	761	-57.8%	107	1,723	691	-59.9%	297	1,243	751	-39.6%
34	1,412	789	-44.1%	108	501	215	-57.1%	301	761	762	0.1%
35	2,588	1,488	-42.5%	110	2,659	1,845	-30.6%	302	68	52	-23.5%
36	2,338	1,506	-35.6%	112	7,357	5,169	-29.7%	344	127	84	-33.9%
37	3,064	2,082	-32.0%	113	729	221	-69.7%	500	33	15	-54.5%
38	6,083	3,250	-46.6%	115	169	254	50.3%				
39	598	132	-77.9%	119	8,305	5,746	-30.8%				
40	1,497	979	-34.6%	120	6,110	2,837	-53.6%				
42	863	594	-31.2%	132	0	7					
46	36	12	-66.7%	135	1,321	795	-39.8%				
51	2,954	1,515	-48.7%	136	148	57	-61.5%				
52	1,085	608	-44.0%	137	1,564	781	-50.1%				
54	2,971	1,365	-54.1%	150	1,583	831	-47.5%	Total (1)	157,098	88,133	-43.9%

(*) Routes currently under contracted operation

(1) Excludes lifeline shuttles; some routes were not run both years on Columbus Day

BUS RIDERSHIP BY ROUTE SERVICE TYPE

Boardings by Service Type and Route	Average Weekday Oct-20	Average Weekday Oct-19	Percent Change 20 vs 19	Average Saturday Oct-20	Average Saturday Oct-19	Percent Change 20 vs 19	Average Sunday Oct-20	Average Sunday Oct-19	Percent Change 20 vs 19	Total Monthly Oct-20	Total Monthly Oct-19	Percent Change 20 vs 19
Express Routes												
34 EXPRESS (*)	771	1,948	-60.4%							16,965	44,795	-62.1%
39 EXPRESS (*)	195	953	-79.5%							4,292	21,910	-80.4%
95-EXPRESS (*)	353	1,875	-81.2%							7,759	43,125	-82.0%
150-MIAMI BEACH AIRPORT FLYER (*)	864	1,640	-47.3%	877	1,494	-41.3%	901	1,410	-36.1%	26,987	49,335	-45.3%
175 - NW MIAMI-DADE EXPRESS												
195 EXPRESS - BROWARD BLVD		406									9,332	-100.0%
196 EXPRESS - SHERIDAN ST		386									8,877	-100.0%
295 EXPRESS - BROWARD BLVD - CIVIC CENTER		236									5,417	-100.0%
296 EXPRESS - SHERIDAN ST - CIVIC CENTER		212									4,876	-100.0%
204 KAT-KILLIAN		1,043									23,996	-100.0%
288 KENDALL CRUISER		784									18,021	-100.0%
338 - WEEKEND EXPRESS				79	224	-64.8%	86	172	-49.9%	739	1,583	-53.3%
836 EXPRESS												
Subtotal Express Routes	2,183	9,481	-77.0%	955	1,718	-44.4%	987	1,582	-37.6%	56,742	231,267	-75.5%
Percentage of All Bus Routes	2.1%	5.7%		1.4%	1.8%		1.8%	2.1%		2.0%	5.1%	
Contracted Regular & Circulator Routes												
1	217	268	-19.1%	185	262	-29.3%	143	209	-31.7%	6,270	8,049	-22.1%
29	309	632	-51.2%							6,789	14,533	-53.3%
35	1,632	2,738	-40.4%	1,012	1,169	-13.5%	871	853	2.1%	44,453	71,063	-37.4%
46 - LIBERTY CITY CONN.	15	36	-59.9%							321	837	-61.6%
56	168	363	-53.6%							3,703	8,344	-55.6%
57	229	440	-48.0%							5,031	10,115	-50.3%
71	303	686	-55.8%	135	269	-49.9%	142	140	1.3%	7,901	17,403	-54.6%
72	363	744	-51.1%	230	313	-26.5%	173	237	-27.2%	9,834	19,305	-49.1%
82 - WESTCHESTER CIRC	22	58	-61.9%	25	50					615	1,543	-60.1%
101 - A	97	150	-34.9%	54	68	-20.0%	35	41	-14.0%	2,555	3,875	-34.1%
115	211	142	48.5%	138	76	81.5%	89	76	16.1%	5,680	3,872	46.7%
135	690	1,333	-48.3%	310	510		235	362		17,660	34,140	-48.3%
155 - BISCAYNE GARDENS CIRC	33	44	-24.9%							731	1,018	-28.2%
202 - LITTLE HAITI CONN.	105	138	-23.7%	90	67	34.6%	81	43	91.2%	3,086	3,602	-14.3%
210 - SKYLAKE CIRC	211	283	-25.4%	181	148	22.0%	96	172	-44.3%	5,930	7,785	-23.8%
211-OVERTOWN CIRC	35	68	-48.4%							775	1,569	-50.6%
212-SWEETWATER CIRC	21	38	-44.7%							465	879	-47.1%
217 - BUNCHE PARK CIRC	76	85	-10.6%							1,669	1,952	-14.5%
248 - PRINCETON CIRCULATOR	71	104	-31.3%							1,565	2,382	-34.3%
254-BROWNSVILLE CIRC	11	17	-34.2%							243	386	-37.0%
267-LUDLAM LIMITED	88	132	-33.3%							1,931	3,028	-36.2%
272 KAT-SUNSET	218	551	-60.4%							4,795	12,674	-62.2%
286-NORTH POINTE CIRC	35	86	-59.7%	33	39	-15.9%				926	2,134	-56.6%
344	66	125	-47.0%							1,456	2,874	-49.3%
Subtotal Contracted Reg. & Circ. Routes	5,226	9,259	-43.6%	2,393	2,971	-19.4%	1,864	2,132	-12.6%	134,384	233,362	-42.4%
Percentage of All Bus Routes	5.1%	5.6%		3.6%	3.1%		3.5%	2.9%		4.8%	5.2%	

BUS RIDERSHIP BY ROUTE SERVICE TYPE

Boardings by Service Type and Route	Average Weekday	Average Weekday	Percent Change	Average Saturday	Average Saturday	Percent Change	Average Sunday	Average Sunday	Percent Change	Total Monthly	Total Monthly	Percent Change
	Oct-20	Oct-19	20 vs 19	Oct-20	Oct-19	20 vs 19	Oct-20	Oct-19	20 vs 19	Oct-20	Oct-19	20 vs 19
Contracted Express Routes												
301-DADE MONROE EXPRESS	773	807	-4.2%	801	819	-2.2%	740	739	0.2%	23,977	24,789	-3.3%
302-CARD SOUND EXPRESS	53	70	-24.7%	38	54	-29.6%	32	57	-43.6%	1,474	2,048	-28.0%
Subtotal Contracted Express Routes	826	877	-5.8%	839	873	-3.9%	772	795	-2.9%	25,451	26,837	-5.2%
Percentage of All Bus Routes	0.8%	0.5%		1.3%	0.9%		1.4%	1.1%		0.9%	0.6%	
Limited Stop Routes												
51-FLAGLER MAX	1,835	3,125	-41.3%							40,366	71,878	-43.8%
93 - BISCAYNE MAX	1,480	3,339	-55.7%							32,562	76,791	-57.6%
120 - BEACH MAX	4,240	6,266	-32.3%	3,130	4,707	-33.5%	1,999	3,463	-42.3%	116,927	176,787	-33.9%
252-CORAL REEF MAX	261	861	-69.7%	218	317	-31.3%	145	248	-41.5%	7,416	22,064	-66.4%
277-7TH AVENUE MAX	491	627	-21.8%							10,792	14,421	-25.2%
287-SAGA BAY MAX	122	321	-62.2%							2,673	7,384	-63.8%
297-27th AVENUE ORANGE MAX	759	1,337	-43.2%							16,691	30,746	-45.7%
Subtotal Limited Stop (MAX) Routes	9,187	15,875	-42.1%	3,348	5,024	-33.4%	2,144	3,711	-42.2%	227,427	400,071	-43.2%
Percentage of All Bus Routes	8.9%	9.5%		5.0%	5.2%		4.0%	5.0%		8.1%	8.9%	
Free Route												
132 - TRI-RAIL DORAL	15	8	105.5%							340	173	96.5%
Percentage of All Bus Routes	0.0%	0.0%								0.0%	0.0%	
Contractor-Operated Lifeline Routes												
GREEN HILLS SHUTTLE	9	7	42.3%							37	26	42.3%
KINGS CREEK SHUTTLE	10	21	-54.3%							48	105	-54.3%
SIERRA LAKES SHUTTLE	17	25	-32.8%							84	100	-16.0%
ROBERT SHARP SHUTTLE	20	5	316.7%							80	24	233.3%
AHEPA SHUTTLE	18	22	-17.1%							92	111	-17.1%
FEDERATION GARDENS SHUTTLE				17	23	-24.3%				87	92	-5.4%
Subtotal Contractor-Operated Lifeline Routes	74	80	-6.9%	17	23	-24.3%				428	458	-6.6%
Percentage of All Bus Routes	0.1%	0.0%		0.0%	0.0%		0.0%	0.0%		0.0%	0.0%	
Other Circulator Route												
200-CUTLER BAY LOCAL	63	160	-60.6%	36	122	-70.4%	34	51		1,707	4,383	-61.1%
Percentage of All Bus Routes	0.1%	0.1%		0.1%	0.1%		0.1%	0.1%		0.1%	0.1%	
All Other (Regular) Routes	85,167	130,529	-34.8%	58,834	86,079	-31.7%	47,705	65,992	-27.7%	2,358,660	3,610,461	-34.7%
Percentage of All Bus Routes	82.9%	78.5%		88.6%	88.9%		89.2%	88.9%		84.1%	80.1%	
Total Bus System (1)	102,741	166,269	-38.2%	66,422	96,809	-31.4%	53,506	74,263	-28.0%	2,805,139	4,507,012	-37.8%

(1) Includes shuttles and routes which were not run both years.

(2) Nearly every bus route experienced year-over-year losses as a result of the SARS-CoV-2 pandemic; rides were fare-free beginning March 22, 2020.

(*) The following routes are entirely operated under contract: 1, 29, 34, 35, 39, 46, 56, 57, 71, 72, 82, 95, 101-A, 115, 135, 150, 155, 202, 210, 211, 212, 217, 248, 254, 267, 272, 286, 301, 302 and 344, although some supplemental runs may be performed by DTPW. Conversely, a few routes that are nominally run by DTPW may have a few supplemental runs operated by contractors; Dade-Monroe routes 301 and 302 as well as six Lifeline routes are also under contracted operation.

Several express routes were suspended at the end of March or the beginning of April 2020, due to the SARS-CoV-2 pandemic, while other routes had alignment and schedule modifications made to them, in an ongoing effort to optimize service delivery.

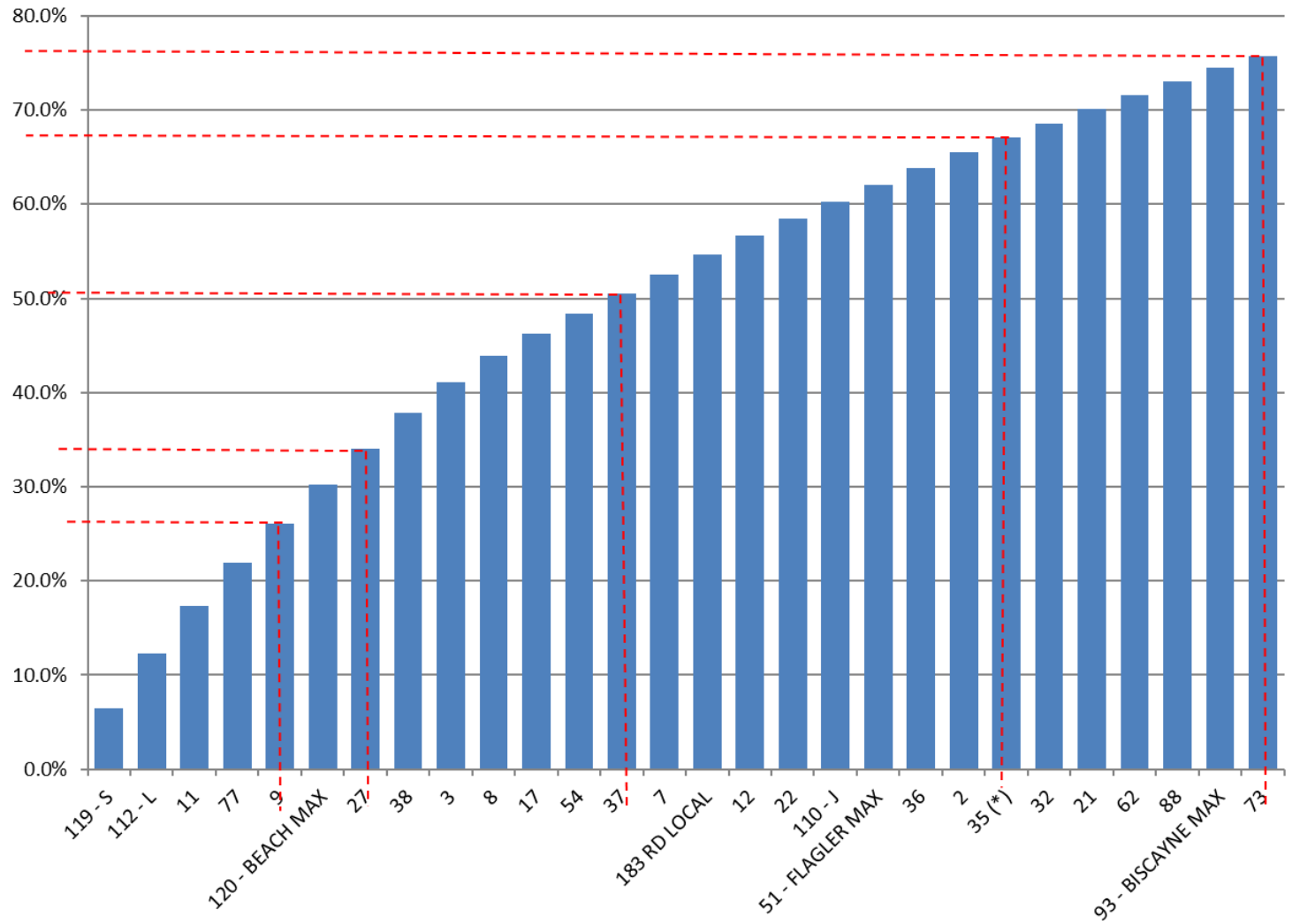
Bus Routes as Ranked by Percentage of Average Weekday Ridership

Rank	Route	Average Weekday	Percent Share	Cumul Pct Share	Rank	Route	Average Weekday	Percent Share	Cumul Pct Share	Rank	Route	Average Weekday	Percent Share	Cumul Pct Share
1	119	6,618	6.4%	6.4%	36	99	910	0.9%	83.8%	71	103	103	0.1%	99.1%
2	112	6,068	5.9%	12.3%	37	87	875	0.9%	84.7%	72	101	97	0.1%	99.2%
3	11	5,124	5.0%	17.3%	38	150	864	0.8%	85.5%	73	267	88	0.1%	99.3%
4	77	4,722	4.6%	21.9%	39	137	852	0.8%	86.3%	74	217	76	0.1%	99.4%
5	9	4,295	4.2%	26.1%	40	19	818	0.8%	87.1%	75	248	71	0.1%	99.5%
6	120	4,240	4.1%	30.2%	41	301	773	0.8%	87.9%	76	136	71	0.1%	99.5%
7	27	3,913	3.8%	34.0%	42	34	771	0.8%	88.6%	77	344	66	0.1%	99.6%
8	38	3,877	3.8%	37.8%	43	297	759	0.7%	89.4%	78	200	63	0.1%	99.7%
9	3	3,394	3.3%	41.1%	44	52	721	0.7%	90.1%	79	302	53	0.1%	99.7%
10	8	2,877	2.8%	43.9%	45	33	705	0.7%	90.7%	80	500	35	0.0%	99.7%
11	17	2,387	2.3%	46.2%	46	135	690	0.7%	91.4%	81	211	35	0.0%	99.8%
12	54	2,188	2.1%	48.4%	47	31	663	0.6%	92.1%	82	286	35	0.0%	99.8%
13	37	2,162	2.1%	50.5%	48	75	639	0.6%	92.7%	83	155	33	0.0%	99.8%
14	7	2,148	2.1%	52.6%	49	105	617	0.6%	93.3%	84	82	22	0.0%	99.9%
15	183	2,117	2.1%	54.6%	50	102	531	0.5%	93.8%	85	212	21	0.0%	99.9%
16	12	2,065	2.0%	56.6%	51	42	513	0.5%	94.3%	86	RS	20	0.0%	99.9%
17	22	1,887	1.8%	58.5%	52	277	491	0.5%	94.8%	87	AS	18	0.0%	99.9%
18	110	1,865	1.8%	60.3%	53	72	363	0.4%	95.1%	88	SL	17	0.0%	99.9%
19	51	1,835	1.8%	62.1%	54	104	357	0.3%	95.5%	89	132	15	0.0%	100.0%
20	36	1,756	1.7%	63.8%	55	95	353	0.3%	95.8%	90	46	15	0.0%	100.0%
21	2	1,733	1.7%	65.5%	56	29	309	0.3%	96.1%	91	254	11	0.0%	100.0%
22	35	1,632	1.6%	67.1%	57	113	304	0.3%	96.4%	92	KC	10	0.0%	100.0%
23	32	1,574	1.5%	68.6%	58	71	303	0.3%	96.7%	93	GH	9	0.0%	100.0%
24	21	1,539	1.5%	70.1%	59	252	261	0.3%	97.0%	94	246	1	0.0%	100.0%
25	62	1,522	1.5%	71.6%	60	108	235	0.2%	97.2%					
26	88	1,503	1.5%	73.0%	61	57	229	0.2%	97.4%					
27	93	1,480	1.4%	74.5%	62	272	218	0.2%	97.6%					
28	73	1,245	1.2%	75.7%	63	1	217	0.2%	97.8%					
29	24	1,221	1.2%	76.9%	64	238	217	0.2%	98.1%					
30	16	1,073	1.0%	77.9%	65	210	211	0.2%	98.3%					
31	10	1,069	1.0%	79.0%	66	115	211	0.2%	98.5%					
32	40	1,059	1.0%	80.0%	67	39	195	0.2%	98.7%					
33	207	1,034	1.0%	81.0%	68	56	168	0.2%	98.8%					
34	208	1,030	1.0%	82.0%	69	287	122	0.1%	98.9%					
35	107	935	0.9%	82.9%	70	202	105	0.1%	99.0%					
										Total Boardings 102,741 100.0% contracted				

(1) Average weekday ridership rounded to the nearest unit.

(2) Includes the five Lifeline Shuttles that operate on weekdays: Ahepa, Green Hills, Kings Creek, Robert Sharp and Sierra Lakes.

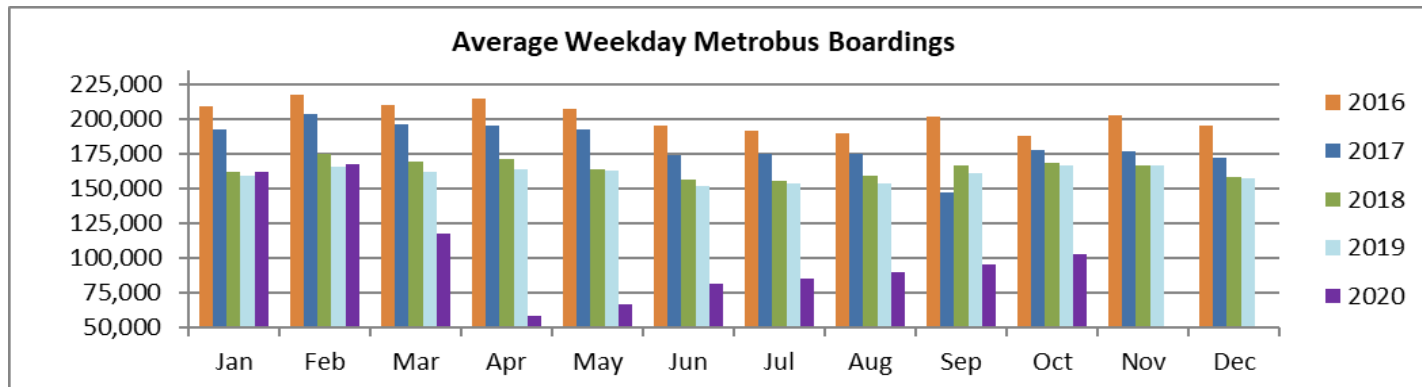
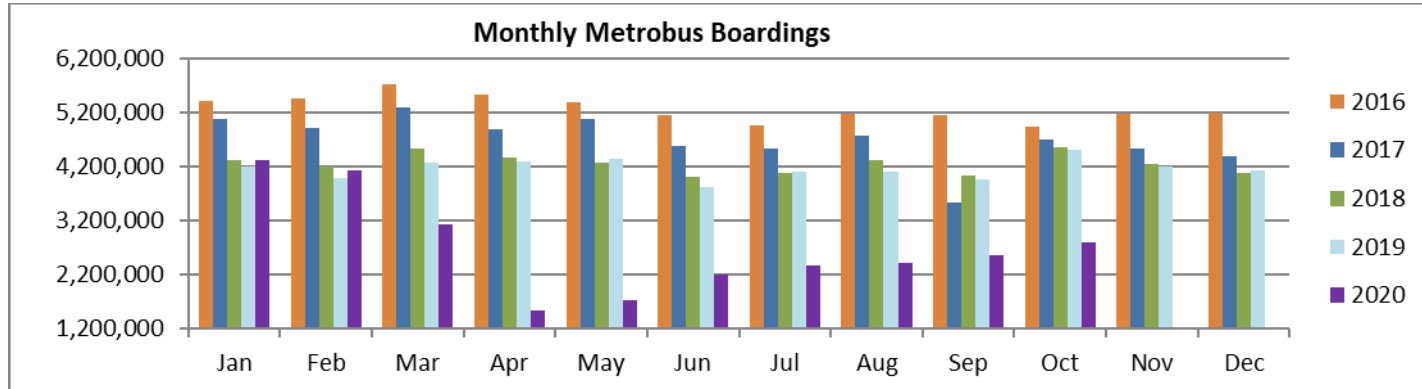
**Bus - Cumulative Percentage Average Weekday Ridership Share
Top 1/4, 1/3, 1/2, 2/3 and 3/4 of Routes**



(*) Route entirely run by contractor

October 2020

TOTAL MONTHLY AND AVERAGE WEEKDAY RIDERSHIP YEAR OVER YEAR COMPARISON CHARTS – METROBUS



**“TOP 5 / BOTTOM 5” BUS ROUTES AVERAGE WEEKDAY RIDERSHIP PERFORMANCE
YEAR OVER YEAR COMPARISONS**

Route	Oct-20	Oct-19	Absolute Delta (1)	Percent Delta (2)
115 (*)	211	142	69	48.5%
132 TRI-RAIL (DORAL)	15	8	8	105.5%
500	35	34	2	5.2%
254 - BROWNSVILLE CIRC. (*)	11	17	-6	-34.2%
217 - BUNCHE PARK CIRC (*)	76	85	-9	-10.6%

11	5,124	7,135	-2,011	-28.2%
120 - BEACH MAX	4,240	6,266	-2,026	-32.3%
77	4,722	7,342	-2,620	-35.7%
38	3,877	6,605	-2,728	-41.3%
27	3,913	6,819	-2,906	-42.6%

(*) Route entirely run by contractor.

(1) Averages rounded to the nearest boarding; Lifelines excluded.

(2) As a result of the SARS-CoV-2 pandemic, only three routes had actual gains in October 2020 compared with October 2019; rides were fare-free beginning March 22, 2020.

METROBUS PARKING PATRONAGE SUMMARY

October 2020

PARK-RIDE LOT	ACTUAL AVAILABLE SPACES	ACTUAL OCCUPANCY	PERCENT OCCUPANCY
Transitway / SW 152nd St	200	41	21%
Transitway / SW 168th St	149	36	24%
Transitway / SW 200th Street (effective February 2020)	100	32	32%
Transitway / SW 112 Ave (Target)	450	53	12%
Transitway / SW 244th St	95	18	19%
Transitway / SW 296th St	139	28	20%
Transitway / SW 344th St	248	102	41%
Coral Reef Drive 117/ Turnpike	95	42	44%
Golden Glades - East Lot	535	121	23%
Golden Glades - West Lot	1,007	70	7%
Hammocks Town Center (SW 152 Ave / SW 104 St)	50	0	0%
Kendall Dr./SW 127th Ave	161	6	4%
West Kendall Transit Term (Kendall Dr / SW162 Ave)	40	3	8%
NW 7th Avenue Transit Village (NW 7 Ave / NW 62 St)	25	17	68%
Miami Gardens Dr. / NW 73rd Ave	136	12	9%
Dolphin Station (effective Mar 2020)	348	3	1%
I-75 / Miami Gardens Dr (effective June 2019)	298	0	0%
TOTAL	4,076	584	14%

Note: some park-ride lots are joint-use and the number of park-ride vehicles may exceed the number of spaces allocated.

Metrorail



October 2020

METRORAIL MONTHLY AND AVERAGE DAILY BOARDINGS BY STATION

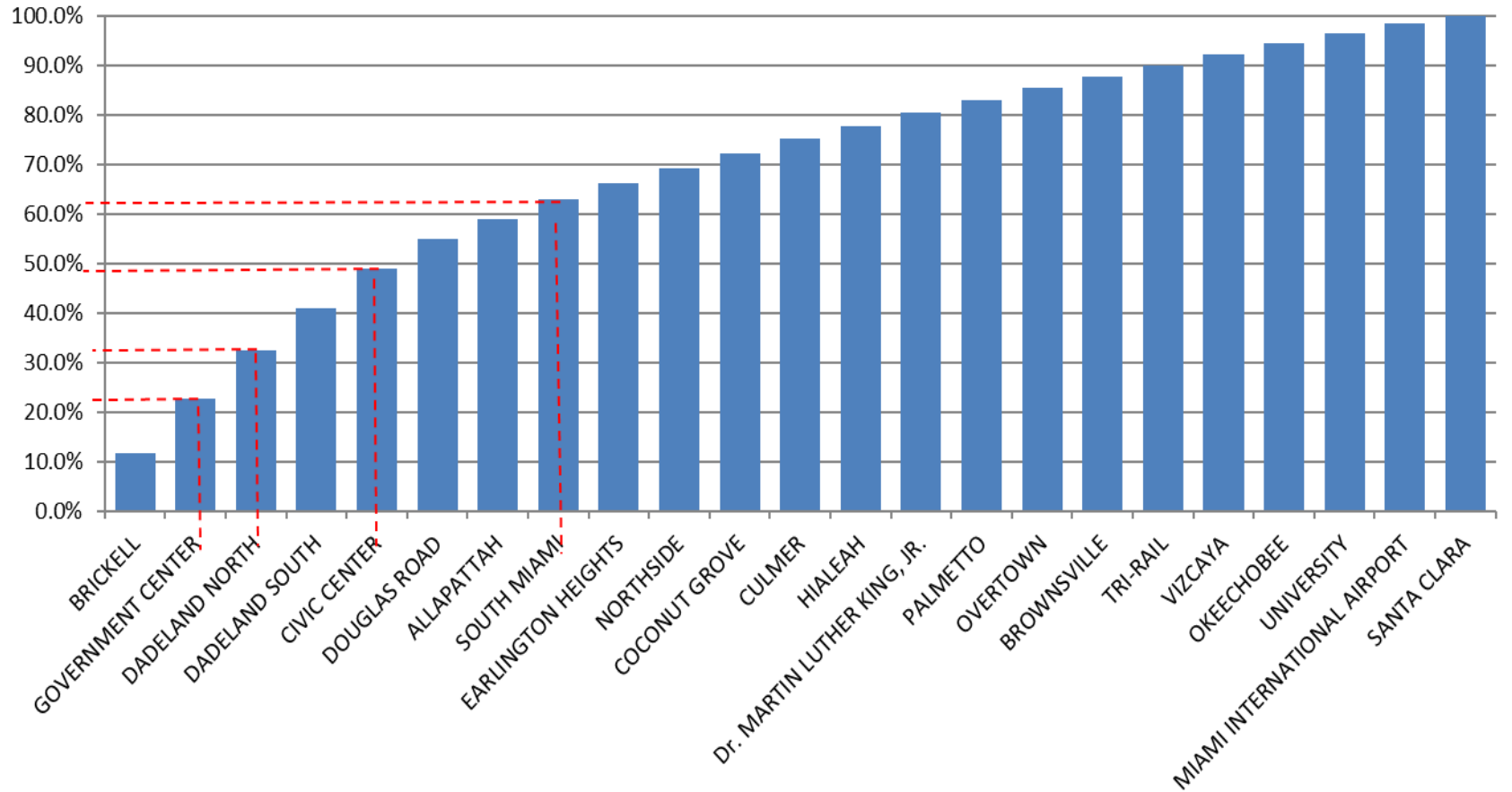
	Average Weekday	Average Weekday	Percent Change	Average Saturday	Average Saturday	Percent Change	Average Sunday	Average Sunday	Percent Change	Total Monthly	Total Monthly	Percent Change
STATIONS	Oct-20	Oct-19	20 vs 19	Oct-20	Oct-19	20 vs 19	Oct-20	Oct-19	20 vs 19	Oct-20	Oct-19	20 vs 19
ALLAPATTAH	1,187	1,819	-34.7%	758	961	-21.1%	566	730	-22.5%	32,131	48,502	-33.8%
BRICKELL	3,368	6,144	-45.2%	2,048	2,511	-18.5%	1,675	1,994	-16.0%	90,751	158,549	-42.8%
BROWNSVILLE	687	838	-18.0%	540	507	6.5%	403	400	0.8%	19,383	22,851	-15.2%
CIVIC CENTER	2,321	5,980	-61.2%	577	936	-38.3%	521	721	-27.8%	55,722	142,848	-61.0%
COCONUT GROVE	856	1,651	-48.1%	510	790	-35.4%	437	630	-30.6%	23,047	43,458	-47.0%
CULMER	852	1,284	-33.6%	539	641	-16.0%	442	481	-8.1%	23,124	33,967	-31.9%
DADELAND NORTH	2,784	5,770	-51.8%	1,475	1,830	-19.4%	1,202	1,327	-9.4%	73,088	144,203	-49.3%
DADELAND SOUTH	2,468	7,067	-65.1%	1,557	2,514	-38.1%	1,259	1,935	-35.0%	66,949	179,071	-62.6%
DOUGLAS ROAD	1,718	3,452	-50.2%	1,036	1,261	-17.8%	684	894	-23.5%	45,660	87,630	-47.9%
DR. MARTIN LUTHER KING, JR.	745	1,157	-35.6%	524	620	-15.4%	373	455	-18.0%	20,469	30,724	-33.4%
EARLINGTON HEIGHTS	938	1,578	-40.5%	633	873	-27.5%	507	693	-26.8%	25,822	42,381	-39.1%
GOVERNMENT CENTER	3,171	9,979	-68.2%	1,864	3,650	-48.9%	1,486	2,634	-43.6%	84,812	251,960	-66.3%
HIALEAH	782	1,265	-38.2%	441	583	-24.4%	317	446	-29.0%	20,677	32,988	-37.3%
MIAMI INTERNATIONAL AIRPORT	556	1,578	-64.8%	514	1,162	-55.7%	534	1,246	-57.1%	17,011	45,935	-63.0%
NORTHSIDE	889	1,405	-36.7%	720	857	-15.9%	512	661	-22.5%	25,196	38,281	-34.2%
OKEECHOBEE	630	1,178	-46.5%	295	378	-21.9%	213	242	-12.0%	16,105	29,311	-45.1%
OVERTOWN / ARENA	695	2,167	-68.0%	425	546	-22.0%	394	430	-8.4%	18,959	53,029	-64.2%
PALMETTO	739	1,449	-49.0%	316	378	-16.5%	212	238	-10.9%	18,629	35,499	-47.5%
SANTA CLARA	497	750	-33.7%	331	373	-11.3%	222	236	-5.9%	13,477	19,627	-31.3%
SOUTH MIAMI	1,104	2,900	-61.9%	676	1,130	-40.1%	488	800	-39.0%	29,400	73,925	-60.2%
TRI-RAIL	666	1,112	-40.1%	390	478	-18.5%	276	430	-35.8%	17,675	29,168	-39.4%
UNIVERSITY	561	2,663	-78.9%	285	648	-56.0%	190	428	-55.5%	14,414	65,589	-78.0%
VIZCAYA	647	1,303	-50.4%	357	553	-35.4%	285	409	-30.4%	17,024	33,670	-49.4%
TOTAL	28,858	64,488	-55.3%	16,812	24,177	-30.5%	13,197	18,458	-28.5%	769,525	1,643,166	-53.2%

(†) All Metrorail stations reported net YOY losses in average weekday ridership in October 2020, due to effects from the SARS-CoV-2 pandemic; rides were fare-free beginning March 22, 2020.

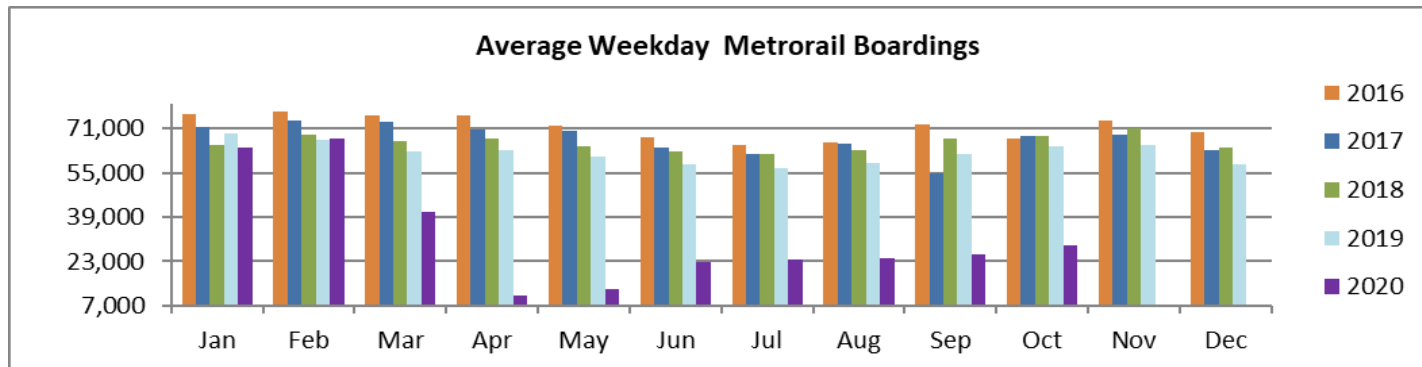
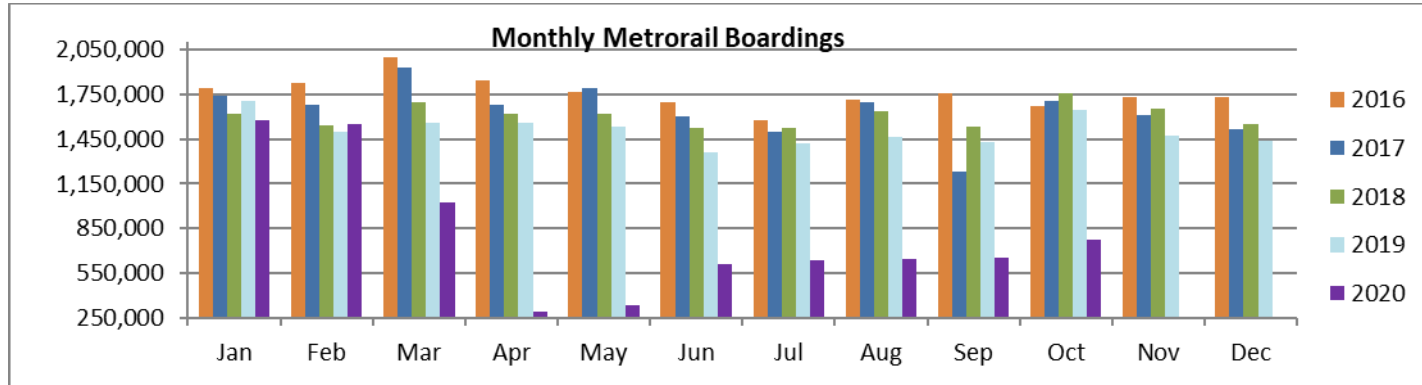
METRORAIL HOLIDAY BOARDINGS BY STATION

	Columbus Day	Columbus Day	Percent Change
STATIONS	2019	2020	20 vs 19
ALLAPATTAH	1,714	1,141	-33.4%
BRICKELL	5,368	3,092	-42.4%
BROWNSVILLE	787	646	-17.9%
CIVIC CENTER	4,650	2,015	-56.7%
COCONUT GROVE	1,462	762	-47.9%
CULMER	1,237	764	-38.2%
DADELAND NORTH	4,632	2,451	-47.1%
DADELAND SOUTH	5,798	2,306	-60.2%
DOUGLAS ROAD	3,062	1,672	-45.4%
DR. MARTIN LUTHER KING, JR.	972	706	-27.4%
EARLINGTON HEIGHTS	1,410	935	-33.7%
GOVERNMENT CENTER	7,294	2,960	-59.4%
HIALEAH	1,041	794	-23.7%
MIAMI INTERNATIONAL AIRPORT	1,601	627	-60.8%
NORTHSIDE	1,291	875	-32.2%
OKEECHOBEE	922	558	-39.5%
OVERTOWN / ARENA	1,445	670	-53.6%
PALMETTO	1,163	695	-40.2%
SANTA CLARA	692	499	-27.9%
SOUTH MIAMI	2,408	879	-63.5%
TRI-RAIL	1,082	642	-40.7%
UNIVERSITY	2,709	445	-83.6%
VIZCAYA	1,149	519	-54.8%
TOTAL	53,889	26,653	-50.5%

Metrorail - Cumulative Percentage Ridership Share **Top 1/4, 1/3, 1/2 and 2/3 of Stations**



TOTAL MONTHLY AND AVERAGE WEEKDAY RIDERSHIP YEAR OVER YEAR COMPARISON CHARTS – METRORAIL



**“TOP 5 / BOTTOM 5” RAIL STATIONS AVERAGE WEEKDAY RIDERSHIP PERFORMANCE
YEAR OVER YEAR COMPARISONS**

Station	Oct-20	Oct-19	Absolute Delta (1)	Percent Delta
BROWNSVILLE	687	838	-151	-18.0%
SANTA CLARA	497	750	-253	-33.7%
Dr. MARTIN LUTHER KING, JR.	745	1,157	-412	-35.6%
CULMER	852	1,284	-431	-33.6%
TRI-RAIL	666	1,112	-446	-40.1%
GOVERNMENT CENTER	3,171	9,979	-6,808	-68.2%
DADELAND SOUTH	2,468	7,067	-4,599	-65.1%
CIVIC CENTER	2,321	5,980	-3,660	-61.2%
DADELAND NORTH	2,784	5,770	-2,987	-51.8%
BRICKELL	3,368	6,144	-2,776	-45.2%

(1) Averages rounded to the nearest boarding.

(†) All Metrorail stations reported net losses in October 2020, due to effects on ridership from the SARS-CoV-2 pandemic.

METRORAIL PARKING PATRONAGE SUMMARY

October 2020

PARK-RIDE LOT	ACTUAL CAPACITY (1)	ACTUAL OCCUPANCY (2)	PERCENT OCCUPANCY
DADELAND SOUTH	1,280		
DADELAND NORTH	1,963		
SOUTH MIAMI	1,081		
UNIVERSITY	260		
DOUGLAS ROAD	150		
COCONUT GROVE	100		
VIZCAYA	120		
CULMER	40		
SANTA CLARA	61		
ALLAPATTAH	74		
EARLINGTON HEIGHTS	361		
BROWNSVILLE	100		
DR. MARTIN LUTHER KING JR. (MDT)	62		
DR. MARTIN LUTHER KING JR. (GARAGE)	631		
NORTHSIDE	197		
HIALEAH	338		
OKEECHOBEE	1,398		
PALMETTO	700		
TOTAL	8,916		

(1) Number of spaces could vary each week; shown are available spaces during final week of month.

(2) Averages rounded to nearest unit; no counts effected in October 2020 due to reassignment of staff as result of SARS-CoV-2 pandemic.

Metromover

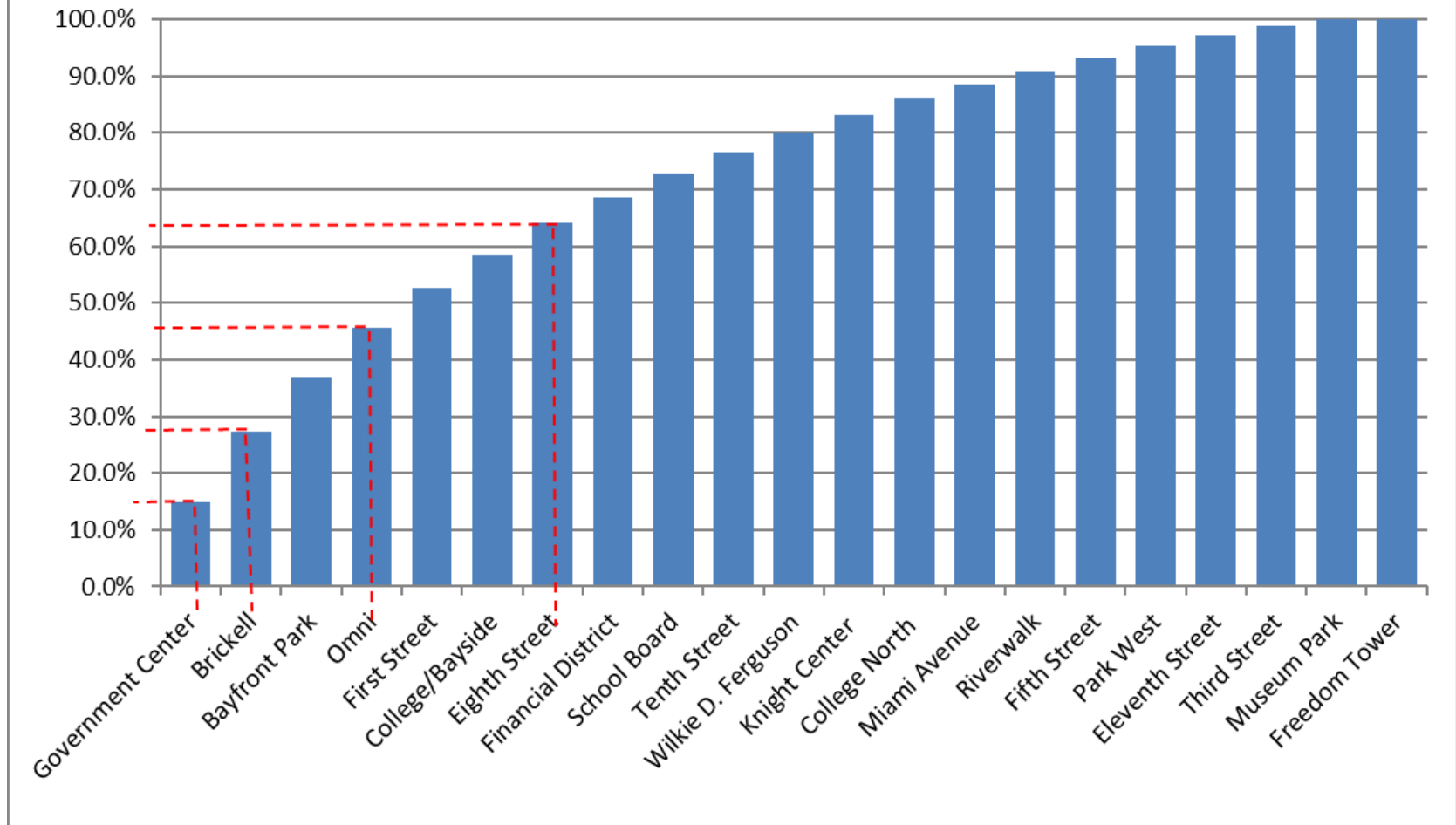


METROMOVER MONTHLY AND AVERAGE DAILY BOARDINGS BY STATION

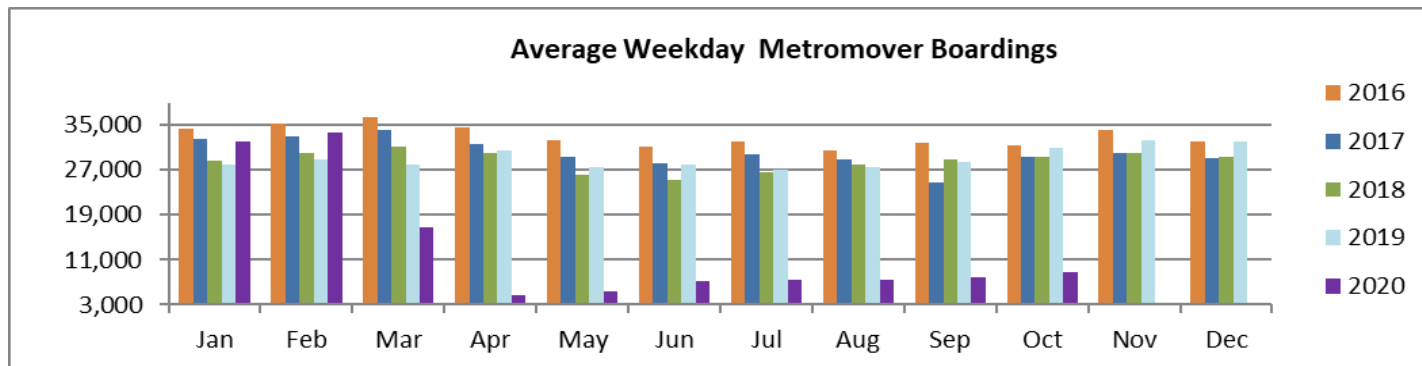
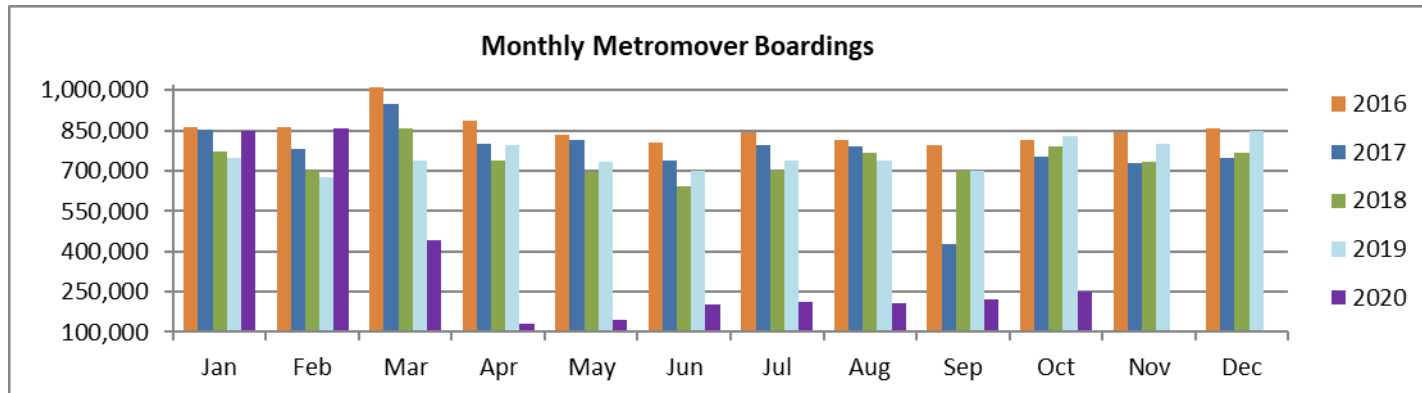
	Average Weekday	Average Weekday	Percent Change	Average Saturday	Average Saturday	Percent Change	Average Sunday	Average Sunday	Percent Change	Columbus Day	Columbus Day	Percent Change	Total Monthly	Total Monthly	Percent Change
STATIONS	Oct-20	Oct-19	20 vs 19	Oct-20	Oct-19	20 vs 19	Oct-20	Oct-19	20 vs 19	Oct-20	Oct-19	20 vs 19	Oct-20	Oct-19	20 vs 19
School Board	374	824	-54.6%	294	658	-55.4%	245	584	-58.1%	341	754	-54.8%	10,645	23,847	-55.4%
Omni	762	1,805	-57.8%	696	1,340	-48.1%	582	1,106	-47.4%	678	1,673	-59.5%	22,494	51,161	-56.0%
Museum Park	98	129	-24.3%	129	320	-59.6%	115	212	-45.8%	48	249	-80.7%	3,214	5,225	-38.5%
Eleventh Street	161	254	-36.5%	101	247	-59.1%	80	222	-64.1%	120	278	-56.8%	4,327	7,735	-44.1%
Park West	192	343	-44.2%	173	309	-44.2%	139	210	-34.0%	195	437	-55.4%	5,635	10,065	-44.0%
Freedom Tower (1)		369			275			226			537			10,652	
Government Center	1,294	7,520	-82.8%	916	2,225	-58.8%	761	1,534	-50.4%	1,140	2,896	-60.6%	35,932	183,380	-80.4%
Miami Avenue	213	489	-56.4%	167	294	-43.2%	199	223	-11.0%	208	361	-42.4%	6,315	13,195	-52.1%
Third Street	150	336	-55.4%	97	242	-59.7%	104	284	-63.4%	194	456	-57.5%	4,242	9,954	-57.4%
Knight Center	280	1,033	-72.9%	151	408	-62.8%	133	308	-56.9%	208	768	-72.9%	7,372	26,353	-72.0%
Bayfront Park	834	3,026	-72.4%	723	2,385	-69.7%	709	1,711	-58.6%	704	2,417	-70.9%	24,662	85,364	-71.1%
First Street	620	1,632	-62.0%	518	1,179	-56.0%	443	986	-55.0%	671	1,435	-53.2%	18,065	46,005	-60.7%
College/Bayside	514	2,272	-77.4%	528	1,496	-64.7%	424	1,148	-63.0%	564	2,341	-75.9%	15,696	62,893	-75.0%
College North	256	1,043	-75.5%	153	301	-49.1%	87	213	-59.2%	228	889	-74.4%	6,716	25,891	-74.1%
Wilkie D. Ferguson	300	535	-43.9%	220	294	-25.1%	200	248	-19.3%	224	397	-43.6%	8,431	14,339	-41.2%
Riverwalk	201	794	-74.7%	146	490	-70.2%	118	360	-67.4%	153	685	-77.7%	5,570	21,554	-74.2%
Fifth Street	199	497	-59.9%	149	338	-56.0%	87	228	-61.8%	69	557	-87.6%	5,343	13,757	-61.2%
Eighth Street	474	2,123	-77.7%	382	1,592	-76.0%	302	1,259	-76.1%	390	1,889	-79.4%	13,461	60,007	-77.6%
Tenth Street	333	695	-52.0%	229	417	-45.0%	150	360	-58.4%	319	678	-52.9%	9,066	19,076	-52.5%
Brickell	1,107	3,884	-71.5%	975	2,486	-60.8%	839	2,007	-58.2%	922	2,994	-69.2%	32,404	106,424	-69.6%
Financial District	393	1,315	-70.1%	244	684	-64.3%	166	533	-68.9%	318	563	-43.5%	10,454	34,357	-69.6%
TOTAL	8,756	30,919	-71.7%	6,993	17,978	-61.1%	5,879	13,961	-57.9%	7,694	23,254	-66.9%	250,044	831,234	-69.9%

(1) Freedom Tower Station was closed for construction throughout October 2020.

Metromover - Cumulative Average Weekday Ridership Percentage Share Top 1/4, 1/3, 1/2 and 2/3 of Stations



TOTAL MONTHLY AND AVERAGE WEEKDAY RIDERSHIP YEAR OVER YEAR COMPARISON CHARTS – METROMOVER



**“TOP 5 / BOTTOM 5” MOVER STATIONS AVERAGE WEEKDAY RIDERSHIP PERFORMANCE
YEAR OVER YEAR COMPARISONS**

Station	Oct-20	Oct-19	Absolute Delta (1)	Percent Delta
Museum Park	98	129	-31	-24.3%
Eleventh Street	161	254	-93	-36.5%
Park West	192	343	-152	-44.2%
Third Street	150	336	-186	-55.4%
Wilkie D. Ferguson	300	535	-235	-43.9%
Government Center	1,294	7,520	-6,227	-82.8%
Brickell	1,107	3,884	-2,777	-71.5%
Bayfront Park	834	3,026	-2,192	-72.4%
College/Bayside	514	2,272	-1,758	-77.4%
Eighth Street	474	2,123	-1,649	-77.7%

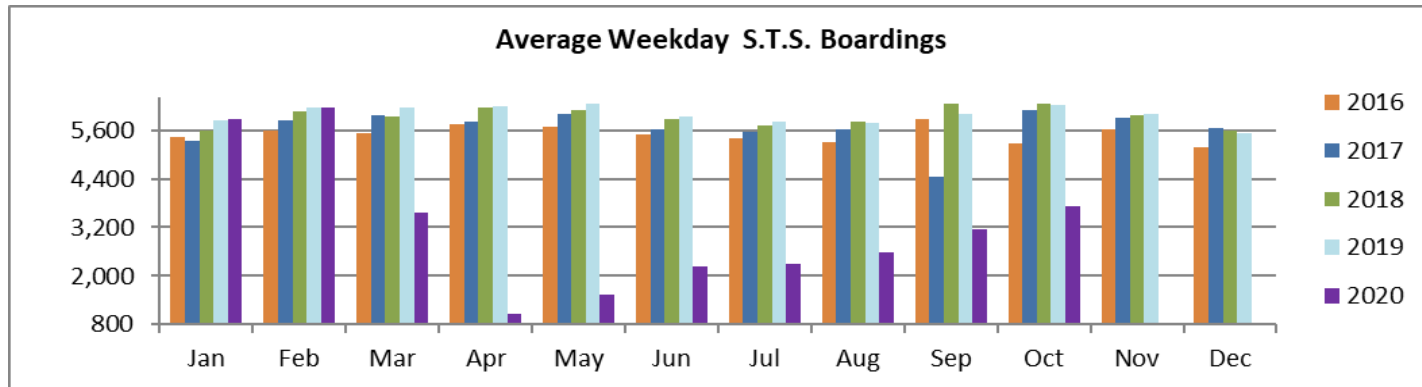
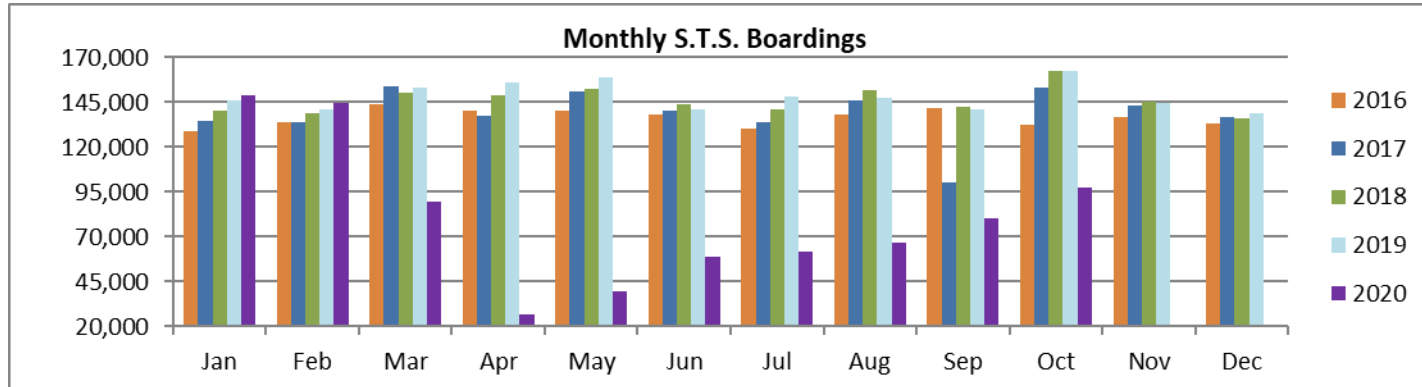
(1) Averages rounded to the nearest boarding.

(†) All Metromover stations reported net YOY losses in October 2020, due to effects on ridership from the SARS-CoV-2 pandemic.

Special Transportation Services



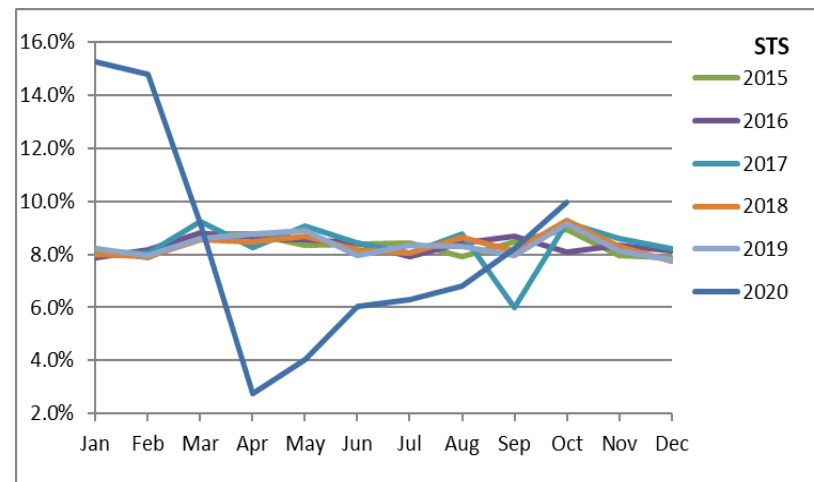
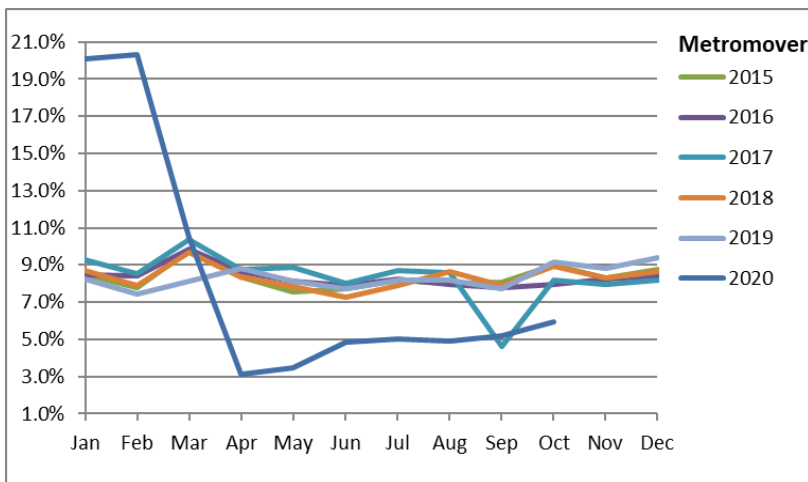
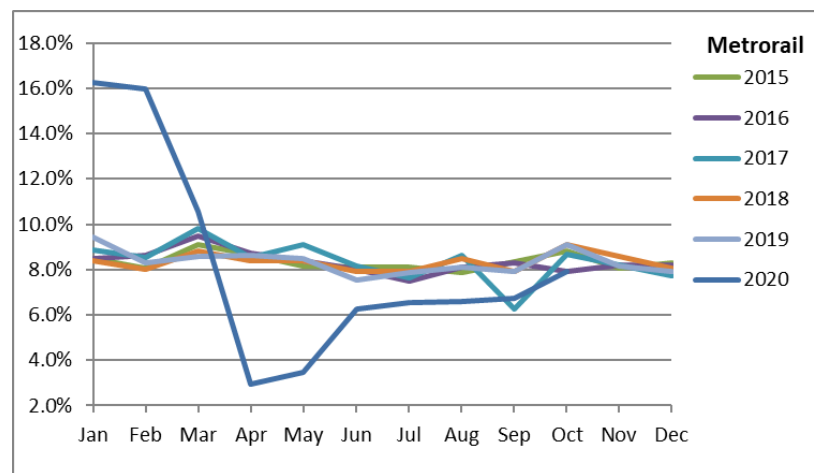
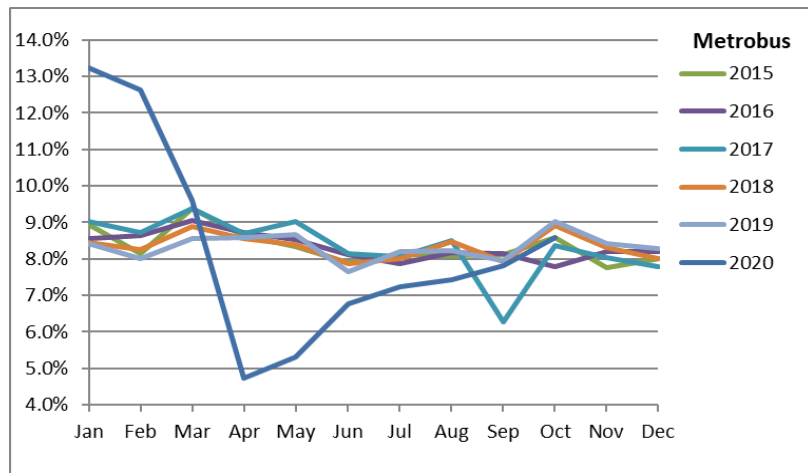
TOTAL MONTHLY AND AVERAGE WEEKDAY RIDERSHIP YEAR OVER YEAR COMPARISON CHARTS – SPECIAL TRANSPORTATION SERVICES (S.T.S.)



Ridership Seasonality



RIDERSHIP SEASONALITY – PERCENT RIDERSHIP SHARE BY MONTH AND CALENDAR YEAR FOR EACH MODE



Note: the prominent dips seen in the fall of 2017 and beginning in the spring of 2020 are due to Hurricane Irma and the SARS-CoV-2 pandemic, respectively.