



TRANSPORTATION AND PUBLIC WORKS

RIDERSHIP TECHNICAL REPORT

Division of Performance and Materials Management



November 2020

Table of Contents

<i>Table of Contents</i>	2-3
All Modes Overview	4
Total Monthly Weekday, Saturday and Sunday Monthly Boardings By Mode	5
Average Weekday, Saturday and Sunday Boardings by Mode	6
All-Modes Combined Total Monthly Ridership Comparisons By Fiscal Year	7
All Modes Combined Total Monthly and Average Weekday Ridership – Year over Year Comparison Charts	8
Metrobus Total Monthly Ridership Comparisons by Fiscal Year	9
Metrorail Total Monthly Ridership Comparisons by Fiscal Year	10
Metromover Total Monthly Ridership Comparisons by Fiscal Year	11
STS Total Monthly Ridership Comparisons by Fiscal Year	12
Average Weekday Ridership – Modal Splits	13
Metrobus	14
Monthly and Average Daily Bus Boardings by Route	15-18
Metrobus Holiday Boardings By Route	19-21
Bus Ridership by Service Type	22-23
Bus Routes as Ranked by Percentage of Average Weekday Ridership	24
Metrobus Cumulative Percentage Average Weekday Ridership Share by Route (Top 75%)	25
Total Monthly and Average Weekday Rail Ridership – Year over Year Comparison Charts	26

Table of Contents (continued)

Metrobus (Continued)

Bus “Top 5 / Bottom 5” Routes Average Weekday Ridership Performance 27

Metrobus Parking Patronage Summary 28

Metrorail 29

Monthly and Average Daily Rail Boardings by Station 30

Metrorail Holiday Boardings by Station 31

Metrorail Cumulative Percentage Average Weekday Ridership Share 32

Total Monthly and Average Weekday Rail Ridership – Year over Year Comparison Charts 33

“Top 5 / Bottom 5” Stations Average Weekday Ridership Performance 34

Metrorail Parking Patronage Summary 35

Metromover 36

Monthly and Average Daily Mover Boardings by Station 37

Metromover Holiday Boardings By Station 38

Metromover Cumulative Percentage Average Weekday Ridership Share 39

Total Monthly and Average Weekday Mover Ridership – Year over Year Comparison Charts 40

“Top 5 / Bottom 5” Stations Average Weekday Ridership Performance 41

Special Transportation Services (STS) 42

Total Monthly and Average Weekday STS Ridership – Year over Year Comparison Charts 43

Ridership Seasonality 44

Ridership Seasonality – Percent Ridership Share by Month and Calendar year for Each Mode 45

All Modes Overview



TOTAL MONTHLY WEEKDAY, SATURDAY AND SUNDAY BOARDINGS BY MODE November 2020

TRAVEL MODE	MONTH'S TOTAL WEEKDAYS RIDERSHIP (*)	MONTH'S TOTAL SATURDAYS RIDERSHIP	MONTH'S TOTAL SUNDAYS RIDERSHIP (**)	TOTAL MONTHLY RIDERSHIP	% CHANGE vs Nov 2019 TOTAL MONTH RIDERSHIP
METROBUS (1)	2,061,688	286,720	302,882	2,651,290	-36.8%
METRORAIL (2)	565,403	67,636	66,453	699,492	-52.4%
METROMOVER (3)	171,489	28,262	32,671	232,422	-70.9%
STS (4)	72,757	7,958	8,672	89,387	-38.1%
TOTAL	2,871,337	390,576	410,678	3,672,591	-44.4%

(*) Total Bus and STS weekday ridership includes Monday, November 11, 2020 (Veteran's Day Holiday) and Friday, November 27, 2020 (Friday-After-Thanksgiving, a County-observed holiday). Weekday ridership excludes those two holidays on Metrorail and Metromover. Ridership numbers for the two dates were respectively as follows:

Metrobus	91,792	and	94,531
Metrorail	27,170		21,261
Metromover	8,331		7,671
STS	3,687		2,205

(**) Total Bus and STS Sunday ridership includes Thursday, November 26, 2020 (Thanksgiving Day). Sunday ridership excludes Thanksgiving for Metrorail and Metromover. Ridership on that day was as follows:

Metrobus	49,944
Metrorail	8,955
Metromover	5,358
STS	2,065

- (1) As a result of the SARS-CoV-2 pandemic, Metrobus rides became fare-free on March 22, 2020; consequently, NextFare System farebox data was replaced by bus automatic passenger counter data starting on that date.
- (2) As a result of the SARS-CoV-2 pandemic, Metrorail rides became fare-free on March 22, 2020; consequently, NextFare System faregate data was replaced manually-counted data and other estimates starting on that date.
- (3) Beginning March 13, 2020 (day of National Emergency Declaration due to SARS-CoV-2 pandemic), only raw data from Metromover automatic passenger counters is reported; no estimates are performed after March 13, 2020.
- (4) Paratransit ridership data as reported by the contractor.

AVERAGE WEEKDAY, SATURDAY AND SUNDAY BOARDINGS BY MODE November 2020

Travel Mode	Average Weekday (1)	Average Saturday	Average Sunday (2)	% Change Nov 2019 Weekday	% Change Nov 2019 Saturday	% Change Nov 2019 Sunday
METROBUS	103,163	71,680	50,480	-38.1%	-28.4%	-30.4%
METRORAIL	28,721	16,909	11,500	-55.8%	-32.6%	-41.1%
METROMOVER	8,638	7,066	5,463	-73.3%	-64.0%	-66.0%
STS	3,638	1,990	1,445	-39.3%	-22.1%	-38.4%
Totals (1)	144,159	97,644	68,888	-46.6%	-33.7%	-37.6%

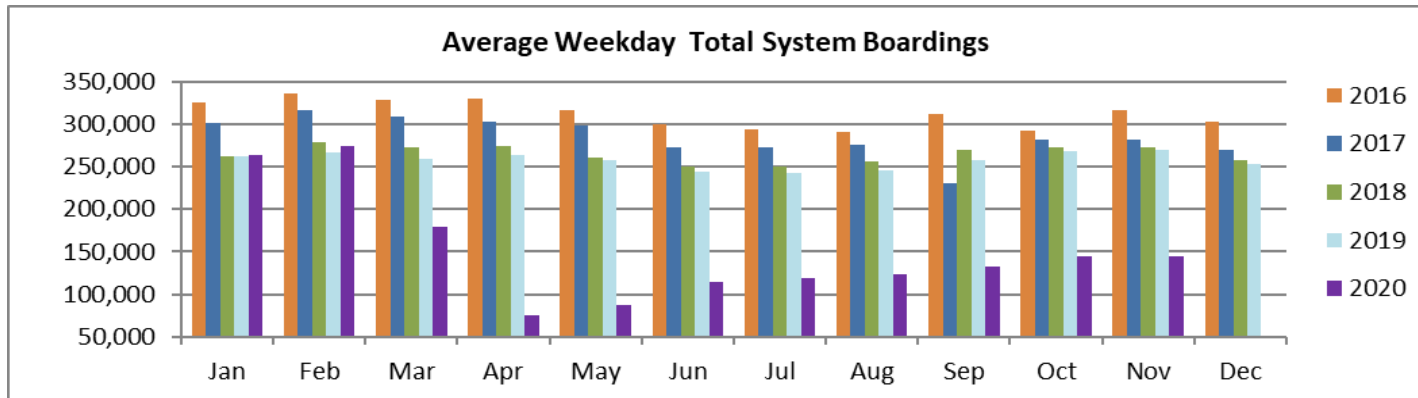
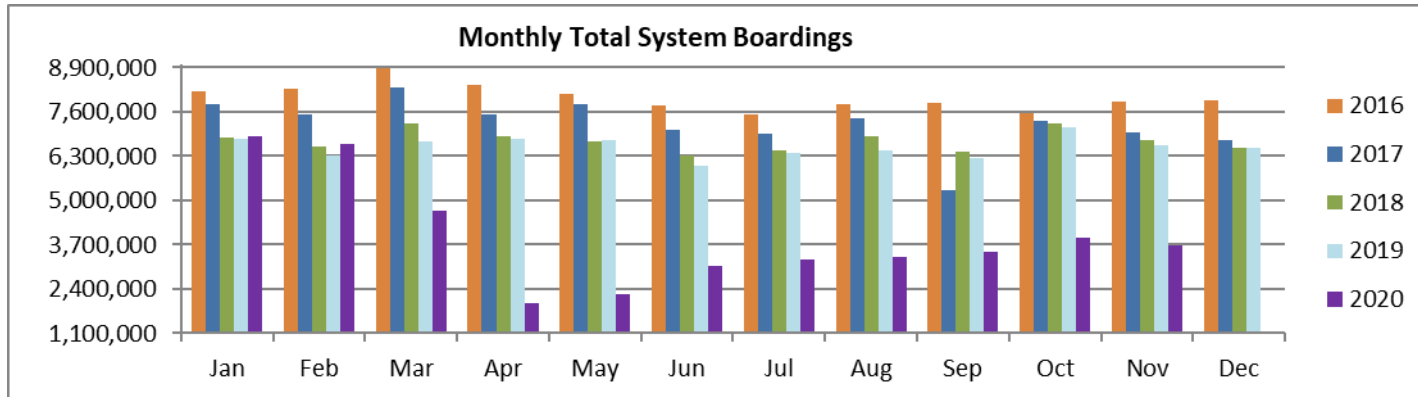
(1) Average weekday ridership includes Veterans Day and Friday-After-Thanksgiving Day for Metrobus and STS, but excludes it for Metrorail and Metromover

(2) Average Sunday ridership includes Thanksgiving Day for Metrobus and STS, but excludes it for Metrorail and Metromover

ALL-MODES COMBINED TOTAL MONTHLY RIDERSHIP COMPARISONS BY FISCAL YEAR

All Modes Month	FY 17	FY 18	FY 19	FY 20	FY 21	17 TO 18	18 TO 19	19 TO 20	20 TO 21	17 TO 21
Oct	7,543,706	7,322,886	7,265,208	7,144,116	3,922,096	-2.9%	-0.8%	-1.7%	-45.1%	-48.0%
Nov	7,894,500	7,005,032	6,783,315	6,610,671	3,672,591	-11.3%	-3.2%	-2.5%	-44.4%	-53.5%
Dec	7,919,860	6,783,192	6,538,734	6,549,392		-14.4%	-3.6%	0.2%		
Jan	7,814,784	6,834,741	6,797,602	6,890,225		-12.5%	-0.5%	1.4%		
Feb	7,505,125	6,591,531	6,312,033	6,671,991		-12.2%	-4.2%	5.7%		
Mar	8,317,082	7,244,805	6,712,624	4,694,315		-12.9%	-7.3%	-30.1%		
Apr	7,513,151	6,869,802	6,802,085	1,989,545		-8.6%	-1.0%	-70.8%		
May	7,841,691	6,742,402	6,755,829	2,258,413		-14.0%	0.2%	-66.6%		
Jun	7,069,455	6,318,979	6,026,467	3,082,213		-10.6%	-4.6%	-48.9%		
Jul	6,969,807	6,449,526	6,402,110	3,272,074		-7.5%	-0.7%	-48.9%		
Aug	7,408,607	6,879,929	6,460,375	3,335,847		-7.1%	-6.1%	-48.4%		
Sep	5,284,604	6,412,945	6,240,212	3,501,209		21.4%	-2.7%	-43.9%		
FY Total	89,082,372	81,455,770	79,096,594	56,000,011		-8.6%	-2.9%	-29.2%		

TOTAL MONTHLY AND AVERAGE WEEKDAY RIDERSHIP YEAR OVER YEAR COMPARISON CHARTS – ALL MODES COMBINED



METROBUS TOTAL MONTHLY RIDERSHIP COMPARISONS BY FISCAL YEAR

Bus	FY 17	FY 18	Variance 17 to 18	FY 19	Variance 18 to 19	FY 20	Variance 19 to 20	FY 21	Variance 20 to 21	Variance 17 to 21
Oct	4,925,781	4,709,590	-4.4%	4,554,886	-3.3%	4,507,012	-1.1%	2,805,139	-37.8%	-43.1%
Nov	5,181,524	4,522,250	-12.7%	4,245,535	-6.1%	4,197,225	-1.1%	2,651,290	-36.8%	-48.8%
Dec	5,192,692	4,380,099	-15.6%	4,081,581	-6.8%	4,126,990	1.1%			
Jan	5,084,085	4,307,001	-15.3%	4,195,911	-2.6%	4,316,998	2.9%			
Feb	4,914,307	4,208,811	-14.4%	3,994,019	-5.1%	4,123,083	3.2%			
Mar	5,287,813	4,534,564	-14.2%	4,266,768	-5.9%	3,136,162	-26.5%			
Apr	4,895,697	4,360,997	-10.9%	4,291,135	-1.6%	1,544,316	-64.0%			
May	5,087,877	4,277,628	-15.9%	4,330,922	1.2%	1,734,609	-59.9%			
Jun	4,586,556	4,009,340	-12.6%	3,823,863	-4.6%	2,210,725	-42.2%			
Jul	4,539,259	4,080,664	-10.1%	4,094,906	0.3%	2,366,749	-42.2%			
Aug	4,780,589	4,326,980	-9.5%	4,109,613	-5.0%	2,422,014	-41.1%			
Sep	3,524,818	4,041,992	14.7%	3,971,220	-1.8%	2,546,923	-35.9%			
FY Total	58,000,998	51,759,916	-10.8%	49,960,359	-3.5%	37,232,806	-25.5%			

METRORAIL TOTAL MONTHLY RIDERSHIP COMPARISONS BY FISCAL YEAR

Rail	FY 17	FY 18	Variance 17 to 18	FY 19	Variance 18 to 19	FY 20	Variance 19 to 20	FY 21	Variance 20 to 21	Variance 17 to 21
Oct	1,670,933	1,708,564	2.3%	1,757,225	2.8%	1,643,166	-6.5%	769,525	-53.2%	-53.9%
Nov	1,734,267	1,609,888	-7.2%	1,656,929	2.9%	1,469,448	-11.3%	699,492	-52.4%	-59.7%
Dec	1,734,768	1,517,341	-12.5%	1,553,804	2.4%	1,433,928	-7.7%			
Jan	1,743,638	1,615,576	-7.3%	1,708,695	5.8%	1,576,340	-7.7%			
Feb	1,676,215	1,545,581	-7.8%	1,501,458	-2.9%	1,549,118	3.2%			
Mar	1,926,434	1,700,714	-11.7%	1,554,851	-8.6%	1,027,319	-33.9%			
Apr	1,677,459	1,619,890	-3.4%	1,559,446	-3.7%	287,803	-81.5%			
May	1,787,885	1,618,504	-9.5%	1,531,597	-5.4%	337,696	-78.0%			
Jun	1,605,234	1,524,311	-5.0%	1,359,966	-10.8%	608,758	-55.2%			
Jul	1,500,243	1,527,380	1.8%	1,419,158	-7.1%	632,964	-55.4%			
Aug	1,693,524	1,632,471	-3.6%	1,463,646	-10.3%	641,275	-56.2%			
Sep	1,234,135	1,530,088	24.0%	1,427,726	-6.7%	654,244	-54.2%			
Total	19,984,735	19,150,308	-4.2%	18,494,501	-3.4%	11,862,059	-35.9%			

METROMOVER TOTAL MONTHLY RIDERSHIP COMPARISONS BY FISCAL YEAR

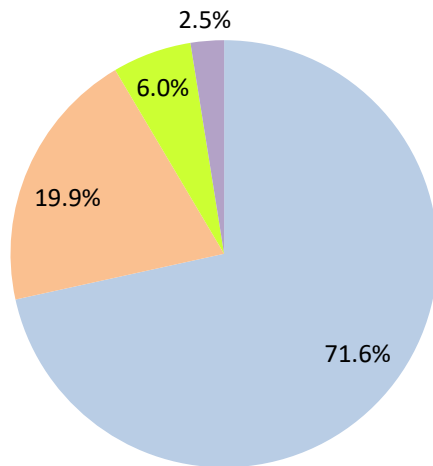
Mover	FY 17	FY 18	Variance 17 to 18	FY 19	Variance 18 to 19	FY 20	Variance 19 to 20	FY 21	Variance 20 to 21	Variance 17 to 21
Oct	814,781	751,323	-7.8%	790,533	5.2%	831,234	5.1%	250,044	-69.9%	-69.3%
Nov	841,679	729,519	-13.3%	735,198	0.8%	799,632	8.8%	232,422	-70.9%	-72.4%
Dec	858,961	748,797	-12.8%	767,239	2.5%	849,832	10.8%			
Jan	852,788	772,122	-9.5%	746,728	-3.3%	847,773	13.5%			
Feb	780,514	698,107	-10.6%	675,160	-3.3%	855,398	26.7%			
Mar	949,045	859,143	-9.5%	737,814	-14.1%	441,200	-40.2%			
Apr	802,778	740,036	-7.8%	795,696	7.5%	130,549	-83.6%			
May	814,791	694,106	-14.8%	734,645	5.8%	146,454	-80.1%			
Jun	737,042	641,675	-12.9%	701,318	9.3%	203,637	-71.0%			
Jul	796,649	700,462	-12.1%	739,814	5.6%	210,596	-71.5%			
Aug	788,734	768,728	-2.5%	739,785	-3.8%	205,995	-72.2%			
Sep	425,641	698,505	64.1%	699,879	0.2%	219,696	-68.6%			
Total	9,463,403	8,802,523	-7.0%	8,863,809	0.7%	5,741,996	-35.2%			

SPECIAL TRANSPORTATION SERVICES (STS) TOTAL MONTHLY RIDERSHIP COMPARISONS BY FISCAL YEAR

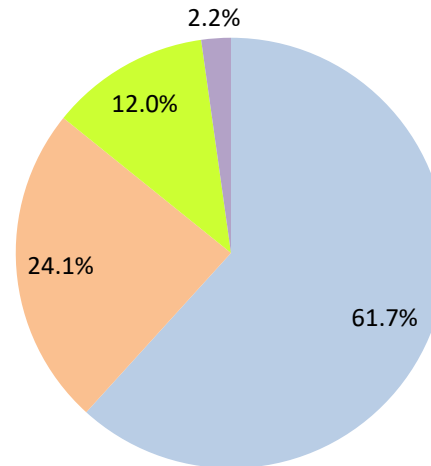
STS	FY 17	FY 18	Variance 17 to 18	FY 19	Variance 18 to 19	FY 20	Variance 19 to 20	FY 21	Variance 20 to 21	Variance 17 to 21
Oct	132,211	153,409	16.0%	162,564	6.0%	162,704	0.1%	97,388	-40.1%	-26.3%
Nov	137,030	143,375	4.6%	145,653	1.6%	144,366	-0.9%	89,387	-38.1%	-34.8%
Dec	133,439	136,955	2.6%	136,110	-0.6%	138,642	1.9%			
Jan	134,273	140,042	4.3%	146,268	4.4%	149,114	1.9%			
Feb	134,089	139,032	3.7%	141,396	1.7%	144,392	2.1%			
Mar	153,790	150,384	-2.2%	153,191	1.9%	89,634	-41.5%			
Apr	137,217	148,879	8.5%	155,808	4.7%	26,877	-82.7%			
May	151,138	152,164	0.7%	158,665	4.3%	39,654	-75.0%			
Jun	140,623	143,653	2.2%	141,320	-1.6%	59,093	-58.2%			
Jul	133,656	141,020	5.5%	148,232	5.1%	61,765	-58.3%			
Aug	145,760	151,750	4.1%	147,331	-2.9%	66,563	-54.8%			
Sep	100,010	142,360	42.3%	141,387	-0.7%	80,346	-43.2%			
Total	1,633,236	1,743,023	6.7%	1,777,925	2.0%	1,163,150	-34.6%			

AVERAGE WEEKDAY RIDERSHIP - MODAL SPLITS

November 2020



November 2019



Metrobus



METROBUS MONTHLY AND AVERAGE DAILY BOARDINGS BY ROUTE

Route	Average Weekday	Average Weekday	Percent Change	Average Saturday	Average Saturday	Percent Change	Average Sunday	Average Sunday	Percent Change	Total Monthly	Total Monthly	Percent Change
	Nov-20	Nov-19	20 vs 19	Nov-20	Nov-19	20 vs 19	Nov-20	Nov-19	20 vs 19	Nov-20	Nov-19	20 vs 19
1 (*)	162	303	-46.6%	196	254	-22.8%	129	199	-35.3%	4,792	8,321	-42.4%
2	1,611	2,482	-35.1%	825	1,549	-46.8%	682	1,024	-33.4%	39,606	62,506	-36.6%
3	3,754	5,000	-24.9%	3,685	5,534	-33.4%	2,460	4,174	-41.1%	104,573	148,547	-29.6%
7	1,797	3,239	-44.5%	1,366	1,953	-30.1%	905	1,453	-37.7%	46,823	81,808	-42.8%
8	3,029	3,714	-18.5%	1,927	2,180	-11.6%	1,427	1,692	-15.7%	76,842	93,650	-17.9%
9	4,455	5,455	-18.3%	2,661	3,359	-20.8%	2,362	2,433	-2.9%	113,908	138,066	-17.5%
10	1,124	2,183	-48.5%	1,424	1,876	-24.1%	1,066	1,232	-13.5%	34,571	59,198	-41.6%
11	4,881	7,066	-30.9%	4,108	5,667	-27.5%	2,442	3,730	-34.5%	128,703	188,314	-31.7%
12	2,031	2,766	-26.6%							40,627	55,318	-26.6%
16	1,098	1,760	-37.6%	1,293	1,578	-18.0%	614	838	-26.7%	30,824	47,282	-34.8%
17	2,370	3,804	-37.7%	1,529	2,613	-41.5%	1,253	1,678	-25.3%	61,033	97,525	-37.4%
19	832	1,533	-45.7%							16,641	30,660	-45.7%
21	1,330	1,847	-28.0%							26,598	36,937	-28.0%
22	2,162	3,716	-41.8%	1,620	2,126	-23.8%	1,147	1,540	-25.5%	56,587	92,639	-38.9%
24 - Coral Way Limited	1,262	1,786	-29.4%	893	1,289	-30.8%	666	950	-29.9%	32,800	46,915	-30.1%
27	4,619	6,712	-31.2%	3,083	4,433	-30.5%	2,095	2,937	-28.7%	117,285	171,096	-31.5%
29 (*)	317	644	-50.7%							6,339	12,870	-50.7%
31 - BUSWAY LOCAL	438	1,136	-61.4%	813	908	-10.5%	464	607	-23.6%	14,801	30,304	-51.2%
32	1,460	2,383	-38.7%	793	1,151	-31.1%	439	764	-42.6%	35,006	57,236	-38.8%
33	937	1,733	-46.0%	599	1,079	-44.5%	372	620	-39.9%	23,360	43,150	-45.9%
34 EXPRESS (*)	782	1,866	-58.1%							15,631	37,324	-58.1%
35 (*)	1,626	2,574	-36.8%	1,095	1,123	-2.6%	730	942	-22.5%	41,278	61,808	-33.2%
36	1,778	2,518	-29.4%	1,362	1,368	-0.4%	1,017	1,030	-1.2%	47,119	62,344	-24.4%
37	2,343	3,318	-29.4%	1,650	2,293	-28.0%	1,101	1,673	-34.2%	60,059	86,189	-30.3%
38	4,018	6,622	-39.3%	2,623	4,977	-47.3%	2,070	3,935	-47.4%	103,275	176,989	-41.6%
39 EXPRESS (*)	191	890	-78.5%							3,825	17,801	-78.5%

METROBUS MONTHLY AND AVERAGE DAILY BOARDINGS BY ROUTE

Route	Average Weekday	Average Weekday	Percent Change	Average Saturday	Average Saturday	Percent Change	Average Sunday	Average Sunday	Percent Change	Total Monthly	Total Monthly	Percent Change
	Nov-20	Nov-19	20 vs 19	Nov-20	Nov-19	20 vs 19	Nov-20	Nov-19	20 vs 19	Nov-20	Nov-19	20 vs 19
40	933	1,665	-44.0%	482	710	-32.1%	299	487	-38.7%	22,379	39,285	-43.0%
42	483	843	-42.7%	460	601	-23.5%	282	345	-18.1%	13,195	21,597	-38.9%
46 - LIBERTY CITY CONN. (*)	18	35	-49.9%							351	700	-49.9%
51 - FLAGLER MAX	1,801	3,218	-44.0%							36,013	64,366	-44.0%
52	730	1,220	-40.1%	513	700	-26.7%	401	441	-8.9%	19,059	30,091	-36.7%
54	2,071	3,009	-31.2%	1,790	1,938	-7.7%	969	1,139	-14.9%	54,388	75,573	-28.0%
56 (*)	164	353	-53.6%							3,270	7,053	-53.6%
57 (*)	232	412	-43.6%							4,649	8,239	-43.6%
62	1,565	1,936	-19.2%	1,280	1,343	-4.8%	723	868	-16.8%	40,746	49,768	-18.1%
71 (*)	335	698	-52.0%	146	329	-55.5%	110	157	-29.6%	7,945	16,393	-51.5%
72 (*)	382	742	-48.6%	225	377	-40.3%	177	282	-37.2%	9,596	18,136	-47.1%
73	1,220	2,137	-42.9%	731	1,033	-29.2%	352	480	-26.8%	29,433	50,303	-41.5%
75	807	1,492	-45.9%	422	472	-10.5%	216	248	-13.1%	19,123	33,431	-42.8%
77	5,172	7,256	-28.7%	2,865	4,373	-34.5%	2,493	2,886	-13.6%	129,850	181,409	-28.4%
82 - WESTCHESTER CIRC. (*)	33	68	-51.8%	21	61	-65.9%				702	1,655	-57.6%
87	878	1,511	-41.9%	435	541	-19.6%	172	287	-40.0%	20,338	34,368	-40.8%
88	1,418	2,043	-30.6%	1,051	1,802	-41.6%	604	1,223	-50.6%	36,189	55,978	-35.4%
93 - BISCAYNE MAX	1,427	3,446	-58.6%							28,541	68,910	-58.6%
95 EXPRESS (*)	346	1,713	-79.8%							6,915	34,266	-79.8%
99	870	1,459	-40.4%	702	907	-22.6%	489	626	-21.9%	23,136	36,841	-37.2%
101 - A (*)	100	158	-36.8%	59	70	-16.1%	33	49	-32.7%	2,329	3,753	-37.9%
102 - B	188	1,614	-88.3%	204	813	-74.9%	185	745	-75.1%	5,689	40,079	-85.8%
103 - C	261	426	-38.8%	278	297	-6.5%	138	199	-30.7%	7,148	10,991	-35.0%
104	315	885	-64.4%	113	482	-76.6%	114	297	-61.5%	7,431	21,587	-65.6%
105 - E	708	1,203	-41.1%	480	667	-28.0%	471	567	-16.9%	18,916	30,235	-37.4%

METROBUS MONTHLY AND AVERAGE DAILY BOARDINGS BY ROUTE

Route	Average Weekday	Average Weekday	Percent Change	Average Saturday	Average Saturday	Percent Change	Average Sunday	Average Sunday	Percent Change	Total Monthly	Total Monthly	Percent Change
	Nov-20	Nov-19	20 vs 19	Nov-20	Nov-19	20 vs 19	Nov-20	Nov-19	20 vs 19	Nov-20	Nov-19	20 vs 19
107 - G	689	1,674	-58.8%	642	1,136	-43.4%	585	819	-28.5%	19,859	43,252	-54.1%
108 - H	295	477	-38.1%	296	411	-28.1%	222	334	-33.4%	8,424	13,272	-36.5%
110 - J	1,612	2,643	-39.0%	1,404	1,892	-25.8%	869	1,513	-42.6%	43,074	69,886	-38.4%
112 - L	6,498	7,669	-15.3%	5,572	6,234	-10.6%	3,417	4,548	-24.9%	172,750	207,288	-16.7%
113 - M	300	852	-64.8%	412	458	-10.0%	230	358	-35.7%	9,026	21,112	-57.2%
115 (*)	193	159	21.5%	123	96	27.6%	90	88	2.1%	4,895	4,102	19.3%
119 - S	6,620	8,978	-26.3%	5,955	7,553	-21.2%	5,110	7,080	-27.8%	186,875	252,731	-26.1%
120 - BEACH MAX	4,117	6,826	-39.7%	3,535	5,200	-32.0%	1,991	3,465	-42.5%	108,429	179,834	-39.7%
132 TRI-RAIL (DORAL)	23	6	296.5%							452	114	296.5%
135 (*)	690	1,328	-48.1%	335	552	-39.4%	227	363	-37.6%	16,492	31,143	-47.0%
136	46	142	-67.3%							927	2,835	-67.3%
137 - WEST DADE CONN.	863	1,608	-46.3%	733	1,148	-36.2%	502	800	-37.2%	23,203	41,900	-44.6%
150 - MIAMI BEACH AIRPORT FLYER (*)	870	1,890	-54.0%	918	1,753	-47.6%	901	1,593	-43.4%	26,477	54,524	-51.4%
155 - BISCAYNE GARDENS CIRCULATOR (*)	33	39	-15.5%							622	775	-19.7%
183	2,145	3,129	-31.4%	997	1,968	-49.4%	974	1,293	-24.7%	52,737	78,888	-33.1%
200 - CUTLER BAY LOCAL	92	141	-34.9%	84	122	-31.1%	32	42	-24.6%	2,365	3,645	-35.1%
202 - LITTLE HAITI CONN. (*)	127	145	-12.7%	90	64	39.8%	75	70	6.6%	3,213	3,571	-10.0%
207 (7st) - LITTLE HAVANA CIRC	645	1,508	-57.2%	730	1,057	-30.9%	579	726	-20.2%	19,298	39,082	-50.6%
208 (8st) - LITTLE HAVANA CIRC	803	1,432	-43.9%	853	1,001	-14.8%	533	969	-45.0%	22,679	38,482	-41.1%
210 - SKYLAKE CIRC (*)	187	301	-37.9%	139	167	-16.7%	122	138	-11.6%	5,026	7,543	-33.4%
211 - OVERTOWN CIRC. (*)	36	68	-47.8%							675	1,360	-50.4%
212 - SWEETWATER CIRC. (*)	15	30	-48.2%							294	598	-50.8%
217 - BUNCHE PARK CIRC (*)	59	85	-30.4%							1,124	1,701	-33.9%
238 EAST/WEST CONN.	288	513	-43.9%							5,756	10,261	-43.9%

METROBUS MONTHLY AND AVERAGE DAILY BOARDINGS BY ROUTE

Route	Average Weekday	Average Weekday	Percent Change	Average Saturday	Average Saturday	Percent Change	Average Sunday	Average Sunday	Percent Change	Total Monthly	Total Monthly	Percent Change
	Nov-20	Nov-19	20 vs 19	Nov-20	Nov-19	20 vs 19	Nov-20	Nov-19	20 vs 19	Nov-20	Nov-19	20 vs 19
246 - NIGHT OWL	54	99	-45.1%	54	93	-42.7%	44	93	-53.2%	1,561	2,912	-46.4%
248 - PRINCETON CIRCULATOR (*)	81	115	-29.5%							1,620	2,298	-29.5%
252 - CORAL REEF MAX	369	850	-56.6%	183	316	-42.1%	152	247	-38.4%	9,030	19,814	-54.4%
254 - BROWNSVILLE CIRC. (*)	17	17	3.4%							326	332	-1.8%
267 - LUDLAM LIMITED (*)	87	135	-35.5%							1,738	2,696	-35.5%
272 SUNSET KAT (*)	195	520	-62.6%							3,890	10,397	-62.6%
277 - 7th AVENUE MAX	435	647	-32.7%							8,705	12,937	-32.7%
286 - NORTH POINTE CIRC. (*)	35	109	-67.7%	27	63	-57.9%				774	2,490	-68.9%
287 - SAGA BAY MAX	104	337	-69.0%							2,087	6,736	-69.0%
297-27th AVENUE ORANGE MAX	698	1,325	-47.3%							13,954	26,500	-47.3%
301 DADE-MONROE EXPRESS (*)	752	823	-8.6%	833	843	-1.2%	663	755	-12.1%	22,357	24,452	-8.6%
302 CARD SOUND EXPRESS (*)	61	78	-21.5%	44	53	-16.8%	44	70	-37.4%	1,668	2,180	-23.5%
338 - WEEKEND EXPRESS				96	261	-63.2%	87	274	-68.4%	903	2,674	-66.2%
344 (*)	68	104	-34.7%							1,362	2,087	-34.7%
500	33	36	-8.7%	41	46	-12.0%	36	45	-20.4%	1,028	1,168	-12.0%
12/21 WEEKEND INTERL.				1,771	2,719	-34.9%	1,329	2,027	-34.4%	15,059	23,731	-36.5%
GREEN HILLS SHUTTLE (*)	7	5	38.1%							29	21	38.1%
KINGS CREEK SHUTTLE (*)	9	11	-21.2%							26	33	-21.2%
SIERRA LAKES SHUTTLE (*)	20	24	-15.3%							80	118	-32.2%
ROBERT SHARP SHUTTLE (*)	18	6	200.0%							72	24	200.0%
AHEPA SHUTTLE (*)	14	19	-25.0%							42	56	-25.0%
FEDERATION GARDENS SHUTTLE (*)				18	18	-4.9%				70	92	-23.9%
Total (†)	103,163	166,784	-38.1%	71,680	100,051	-28.4%	50,480	72,484	-30.4%	2,651,290	4,197,225	-36.8%

(1) Includes shuttles and those routes which were not run both years.

(2) Nearly every bus route experienced year-over-year losses as a result of the SARS-CoV-2 pandemic; rides were fare-free beginning March 22, 2020.

(*) The following routes are entirely operated under contract: 1, 29, 34, 35, 39, 46, 56, 57, 71, 72, 82, 95, 101-A, 115, 135, 150, 155, 202, 210, 211, 212, 217, 248, 254, 267, 272, 286, 301, 302 and 344, although some supplemental runs may be performed by DTPW. Conversely, a few routes that are nominally run by DTPW may have a few supplemental runs operated by contractors; Dade-Monroe routes 301 and 302 as well as six Lifeline routes are also under contracted operation.

(†) Not shown are several express routes were suspended at the end of March or the beginning of April 2020, due to the SARS-CoV-2 pandemic, while other routes had alignment and schedule modifications made to them, in an ongoing effort to optimize service delivery; the September 2019 totals include those routes.

(††) Hurricane Eta significantly impacted ridership on Sunday, November 8 and Monday, November 9, 2020.

METROBUS HOLIDAY BOARDINGS BY ROUTE

Veterans Day Holiday

ROUTES	Veterans Day 2019	Veterans Day 2020	Pct Delta	ROUTES	Veterans Day 2019	Veterans Day 2020	Pct Delta	ROUTES	Veterans Day 2019	Veterans Day 2020	Pct Delta
1(*)	270	189	-30.0%	57 (*)	376	245	-34.8%	183	2,509	2,219	-11.6%
2	1,866	1,419	-24.0%	62	1,621	1,269	-21.7%	195	204		
3	4,639	3,737	-19.4%	71 (*)	469	306	-34.8%	196	172		
7	2,903	1,609	-44.6%	72 (*)	1,392	403	-71.0%	200	150	82	-45.3%
8	2,783	2,857	2.7%	73	1,847	1,002	-45.7%	202 (*)	113	166	46.9%
9	4,498	3,471	-22.8%	75	777	584	-24.8%	204	601		
10	2,006	957	-52.3%	77	6,339	4,819	-24.0%	207	1,242	368	-70.4%
11	5,840	4,560	-21.9%	79	372			208	1,199	1,057	-11.8%
12	2,218	2,537	14.4%	82 (*)	91	26	-71.4%	210 (*)	223	155	-30.5%
16	1,527	844	-44.7%	87	1,359	891	-34.4%	211 (*)	55	40	-27.3%
17	3,009	2,642	-12.2%	88	1,706	1,226	-28.1%	212 (*)	24	10	-58.3%
19	887	960	8.2%	93	2,661	1,037	-61.0%	217 (*)	49	53	8.2%
21	1,564	628	-59.8%	95 (*)	666	258	-61.3%	238	477	240	-49.7%
22	3,055	1,729	-43.4%	99	1,307	504	-61.4%	246	104	47	-54.8%
24	1,552	1,340	-13.7%	101 (*)	120	96	-20.0%	248 (*)	101	70	-30.7%
27	5,100	4,196	-17.7%	102	1,605	146	-90.9%	252	676	363	-46.3%
29 (*)	589	388	-34.1%	103	424	333	-21.5%	254 (*)	12	10	-16.7%
31	940	210	-77.7%	104	577	191	-66.9%	267 (*)	118	65	-44.9%
32	1,918	928	-51.6%	105	1,094	537	-50.9%	272 (*)	369	185	-49.9%
33	1,374	779	-43.3%	107	1,526	523	-65.7%	277	449	225	-49.9%
34 (*)	1,323	728	-45.0%	108	477	455	-4.6%	286 (*)	21	49	133.3%
35 (*)	1,826	1,570	-14.0%	110	2,345	1,151	-50.9%	287	228	97	-57.5%
36	2,314	1,124	-51.4%	112	7,093	5,340	-24.7%	288	572		
37	3,064	1,983	-35.3%	113	787	358	-54.5%	295	164		
38	5,342	3,616	-32.3%	115 (*)	145	108	-25.5%	296	117		
39 (*)	402	170	-57.7%	119	8,639	5,538	-35.9%	297	954	786	-17.6%
40	1,334	777	-41.8%	120	6,635	3,636	-45.2%	301 (*)	788	726	-7.9%
42	731	542	-25.9%	132	15	30	100.0%	302 (*)	100	56	-44.0%
46 (*)	20	11	-45.0%	135 (*)	935	719	-23.1%	344 (*)	57	69	21.1%
51	2,455	1,947	-20.7%	136	138	77	-44.2%	500	83	28	-66.3%
52	908	563	-38.0%	137	1,486	723	-51.3%				
54	2,685	2,082	-22.5%	150 (*)	1,864	784	-57.9%				
56 (*)	263	196	-25.5%	155 (*)	34	22	-35.3%	Total (1)	140,058	91,792	-34.5%

(*) Routes currently under contracted operation

(1) Excludes lifeline shuttles; some routes were not run both years on Veterans Day

METROBUS HOLIDAY BOARDINGS BY ROUTE

Thanksgiving Day Holiday

ROUTES	Thanksgiving Day 2019	Thanksgiving Day 2020	Pct Delta	ROUTES	Thanksgiving Day 2019	Thanksgiving Day 2020	Pct Delta
1 (*)	166	86	-48.2%	88	803	517	-35.6%
2	939	765	-18.5%	99	394	390	-1.0%
3	3,325	2,596	-21.9%	101 (*)	74	27	-63.5%
7	1,137	876	-23.0%	102	732	282	-61.5%
8	1,534	1,498	-2.3%	103	208	170	-18.3%
9	1,913	2,291	19.8%	104	260	72	-72.3%
10	783	958	22.3%	105	427	439	2.8%
11	3,357	2,155	-35.8%	107	681	542	-20.4%
12	1,115	662	-40.6%	108	285	267	-6.3%
16	614	659	7.3%	110	1,336	836	-37.4%
17	1,514	1,582	4.5%	112	4,019	3,657	-9.0%
21	675	684	1.3%	113	285	207	-27.4%
22	1,209	1,244	2.9%	115 (*)	69	104	50.7%
24	751	493	-34.4%	119	6,034	4,706	-22.0%
27	2,409	2,395	-0.6%	120	3,039	2,035	-33.0%
31	422	399	-5.5%	135 (*)	304	236	-22.4%
32	667	406	-39.1%	137	576	439	-23.8%
33	502	303	-39.6%	150 (*)	1,690	1,041	-38.4%
35 (*)	1,006	473	-53.0%	183	938	744	-20.7%
36	785	682	-13.1%	200	24	29	20.8%
37	1,306	992	-24.0%	202 (*)	60	55	-8.3%
38	3,021	2,107	-30.3%	207	663	670	1.1%
40	413	358	-13.3%	208	882	626	-29.0%
42	276	221	-19.9%	210 (*)	127	97	-23.6%
52	350	365	4.3%	246 (*)	67	46	-31.3%
54	1,069	966	-9.6%	252	165	146	-11.5%
62	772	766	-0.8%	301 (*)	615	589	-4.2%
71 (*)	173	71	-59.0%	302 (*)	73	48	-34.2%
72 (*)	247	141	-42.9%	338	220	15	-93.2%
73	345	308	-10.7%	500	39	30	-23.1%
75	213	230	8.0%				
77	2,551	3,136	22.9%				
87	162	14	-91.4%				
				Total (1)	60,810	49,944	-17.9%

(*) Routes currently under contracted operation

(1) Excludes lifeline shuttles; some routes were not run both years on Thanksgiving Day

METROBUS HOLIDAY BOARDINGS BY ROUTE

Friday-after-Thanksgiving Day Holiday

ROUTES	Friday-After-Thanksgiving 2019	Friday-After-Thanksgiving 2020	Pct Delta	ROUTES	Friday-After-Thanksgiving 2019	Friday-After-Thanksgiving 2020	Pct Delta	ROUTES	Friday-After-Thanksgiving 2019	Friday-After-Thanksgiving 2020	Pct Delta
1 (*)	260	220	-15.4%	57 (*)	281	177	-37.0%	175	8		
2	1,928	1,468	-23.9%	62	1,596	1,468	-8.0%	183	2,387	1,878	-21.3%
3	4,606	3,452	-25.1%	71 (*)	487	484	-0.6%	195	69		
7	2,380	1,548	-35.0%	72 (*)	497	291	-41.4%	196	87		
8	2,626	2,604	-0.8%	73	1,365	984	-27.9%	200	98	89	-9.2%
9	4,782	5,018	4.9%	75	924	751	-18.7%	202 (*)	138	94	-31.9%
10	1,845	789	-57.2%	77	5,967	5,766	-3.4%	204	360		
11	5,811	4,083	-29.7%	79	241			207	1,316	524	-60.2%
12	1,875	1,726	-7.9%	82 (*)	38	15	-60.5%	208	1,266	717	-43.4%
16	1,608	947	-41.1%	87	915	733	-19.9%	210 (*)	326	190	-41.7%
17	2,744	1,628	-40.7%	88	1,739	1,200	-31.0%	211 (*)	56	32	-42.9%
19	856	660	-22.9%	93	2,685	1,173	-56.3%	212 (*)	20	20	0.0%
21	1,523	1,118	-26.6%	95 (*)	424	142	-66.5%	217 (*)	47	40	-14.9%
22	2,877	2,085	-27.5%	99	1,159	617	-46.8%	238	600	380	-36.7%
24	1,419	1,370	-3.5%	101 (*)	128	77	-39.8%	246	90	77	-14.4%
27	5,286	3,341	-36.8%	102	1,302	80	-93.9%	248 (*)	99	103	4.0%
29 (*)	432	225	-47.9%	103	296	298	0.7%	252	507	255	-49.7%
31	898	367	-59.1%	104	427	283	-33.7%	254 (*)	14	22	57.1%
32	1,822	1,272	-30.2%	105	1,009	688	-31.8%	267 (*)	72	115	59.7%
33	1,394	859	-38.4%	107	1,405	544	-61.3%	272 (*)	236	159	-32.6%
34 (*)	662	617	-6.8%	108	401	269	-32.9%	277	372	169	-54.6%
35 (*)	1,941	1,651	-14.9%	110	2,026	1,647	-18.7%	286 (*)	102	31	-69.6%
36	2,014	1,343	-33.3%	112	7,065	6,188	-12.4%	287	158	110	-30.4%
37	2,447	2,156	-11.9%	113	634	223	-64.8%	288	421		
38	5,433	3,871	-28.8%	115 (*)	85	149	75.3%	295	94		
39 (*)	176	94	-46.6%	119	8,558	6,612	-22.7%	296	50		
40	1,182	782	-33.8%	120	6,500	4,065	-37.5%	297	820	716	-12.7%
42	586	396	-32.4%	132		28		301 (*)	855	846	-1.1%
46 (*)	10	54	440.0%	135 (*)	830	512	-38.3%	302 (*)	63	75	19.0%
51	2,240	1,728	-22.9%	136	81	17	-79.0%	344 (*)	66	103	56.1%
52	869	683	-21.4%	137	1,330	890	-33.1%	500	23	49	113.0%
54	2,415	2,039	-15.6%	150 (*)	1,736	990	-43.0%				
56 (*)	194	139	-28.4%	155 (*)	6	43	616.7%	Total (1)	130,090	94,531	-27.3%

(*) Routes currently under contracted operation

(1) Excludes lifeline shuttles; some routes were not run both years on Veterans Day

BUS RIDERSHIP BY ROUTE SERVICE TYPE

Boardings by Service Type and Route	Average Weekday Nov-20	Average Weekday Nov-19	Percent Change 20 vs 19	Average Saturday Nov-20	Average Saturday Nov-19	Percent Change 20 vs 19	Average Sunday Nov-20	Average Sunday Nov-19	Percent Change 20 vs 19	Total Monthly Nov-20	Total Monthly Nov-19	Percent Change 20 vs 19
Express Routes												
34 EXPRESS (*)	782	1,866	-58.1%							15,631	37,324	-58.1%
39 EXPRESS (*)	191	890	-78.5%							3,825	17,801	-78.5%
95-EXPRESS (*)	346	1,713	-79.8%							6,915	34,266	-79.8%
150-MIAMI BEACH AIRPORT FLYER (*)	870	1,890	-54.0%	918	1,753	-47.6%	901	1,593	-43.4%	26,477	54,524	-51.4%
175 - NW MIAMI-DADE EXPRESS		9									80	
195 EXPRESS - BROWARD BLVD		367									7,339	
196 EXPRESS - SHERIDAN ST		362									7,235	
295 EXPRESS - BROWARD BLVD - CIVIC CENTER		220									4,395	
296 EXPRESS - SHERIDAN ST - CIVIC CENTER		195									3,899	
204 KAT-KILLIAN		970									19,404	
288 KENDALL CRUISER		793									15,855	
338 - WEEKEND EXPRESS				96	261	-63.2%	87	274	-68.4%	903	2,674	-66.2%
836 EXPRESS												
Subtotal Express Routes	2,188	9,274	-76.4%	1,014	2,014	-49.7%	988	1,867	-47.1%	53,751	204,796	-73.8%
Percentage of All Bus Routes	2.1%	5.6%		1.4%	2.0%		2.0%	2.6%		2.0%	4.9%	
Contracted Regular & Circulator Routes												
1	162	303	-46.6%	196	254	-22.8%	129	199	-35.3%	4,792	8,321	-42.4%
29	317	644	-50.7%							6,339	12,870	-50.7%
35	1,626	2,574	-36.8%	1,095	1,123	-2.6%	730	942	-22.5%	41,278	61,808	-33.2%
46 - LIBERTY CITY CONN.	18	35	-49.9%							351	700	-49.9%
56	164	353	-53.6%							3,270	7,053	-53.6%
57	232	412	-43.6%							4,649	8,239	-43.6%
71	335	698	-52.0%	146	329	-55.5%	110	157	-29.6%	7,945	16,393	-51.5%
72	382	742	-48.6%	225	377	-40.3%	177	282	-37.2%	9,596	18,136	-47.1%
82 - WESTCHESTER CIRC	33	68	-51.8%	21	61					702	1,655	-57.6%
101 - A	100	158	-36.8%	59	70	-16.1%	33	49	-32.7%	2,329	3,753	-37.9%
115	193	159	21.5%	123	96	27.6%	90	88	2.1%	4,895	4,102	19.3%
135	690	1,328	-48.1%	335	552		227	363		16,492	31,143	-47.0%
155 - BISCAYNE GARDENS CIRC	33	39	-15.5%							622	775	-19.7%
202 - LITTLE HAITI CONN.	127	145	-12.7%	90	64	39.8%	75	70	6.6%	3,213	3,571	-10.0%
210 - SKYLAKE CIRC	187	301	-37.9%	139	167	-16.7%	122	138	-11.6%	5,026	7,543	-33.4%
211-OVERTOWN CIRC	36	68	-47.8%							675	1,360	-50.4%
212-SWEETWATER CIRC	15	30	-48.2%							294	598	-50.8%
217 - BUNCHE PARK CIRC	59	85	-30.4%							1,124	1,701	-33.9%
248 - PRINCETON CIRCULATOR	81	115	-29.5%							1,620	2,298	-29.5%
254-BROWNSVILLE CIRC	17	17	3.4%							326	332	-1.8%
267-LUDLAM LIMITED	87	135	-35.5%							1,738	2,696	-35.5%
272 KAT-SUNSET	195	520	-62.6%							3,890	10,397	-62.6%
286-NORTH POINTE CIRC	35	109	-67.7%	27	63	-57.9%				774	2,490	-68.9%
344	68	104	-34.7%							1,362	2,087	-34.7%
Subtotal Contracted Reg. & Circ. Routes	5,190	9,140	-43.2%	2,454	3,156	-22.3%	1,691	2,287	-26.1%	123,302	210,021	-41.3%
Percentage of All Bus Routes	5.0%	5.5%		3.4%	3.2%		3.4%	3.2%		4.7%	5.0%	

BUS RIDERSHIP BY ROUTE SERVICE TYPE

Boardings by Service Type and Route	Average Weekday	Average Weekday	Percent Change	Average Saturday	Average Saturday	Percent Change	Average Sunday	Average Sunday	Percent Change	Total Monthly	Total Monthly	Percent Change
	Nov-20	Nov-19	20 vs 19	Nov-20	Nov-19	20 vs 19	Nov-20	Nov-19	20 vs 19	Nov-20	Nov-19	20 vs 19
Contracted Express Routes												
301-DADE MONROE EXPRESS	752	823	-8.6%	833	843	-1.2%	663	755	-12.1%	22,357	24,452	-8.6%
302-CARD SOUND EXPRESS	61	78	-21.5%	44	53	-16.8%	44	70	-37.4%	1,668	2,180	-23.5%
Subtotal Contracted Express Routes	814	901	-9.7%	877	896	-2.1%	707	824	-14.3%	24,025	26,632	-9.8%
Percentage of All Bus Routes	0.8%	0.5%		1.2%	0.9%		1.4%	1.1%		0.9%	0.6%	
Limited Stop Routes												
51-FLAGLER MAX	1,801	3,218	-44.0%							36,013	64,366	-44.0%
93 - BISCAYNE MAX	1,427	3,446	-58.6%							28,541	68,910	-58.6%
120 - BEACH MAX	4,117	6,826	-39.7%	3,535	5,200	-32.0%	1,991	3,465	-42.5%	108,429	179,834	-39.7%
252-CORAL REEF MAX	369	850	-56.6%	183	316	-42.1%	152	247	-38.4%	9,030	19,814	-54.4%
277-7TH AVENUE MAX	435	647	-32.7%							8,705	12,937	-32.7%
287-SAGA BAY MAX	104	337	-69.0%							2,087	6,736	-69.0%
297-27th AVENUE ORANGE MAX	698	1,325	-47.3%							13,954	26,500	-47.3%
Subtotal Limited Stop (MAX) Routes	8,951	16,648	-46.2%	3,717	5,515	-32.6%	2,144	3,712	-42.3%	206,759	379,097	-45.5%
Percentage of All Bus Routes	8.7%	10.0%		5.2%	5.5%		4.2%	5.1%		7.8%	9.0%	
Free Route												
132 -TRI-RAIL DORAL	23	6	296.5%							452	114	296.5%
Percentage of All Bus Routes	0.0%	0.0%								0.0%	0.0%	
Shuttles												
55-MARLINS SHUTTLE												
Percentage of All Bus Routes												
Contractor-Operated Lifeline Routes												
GREEN HILLS SHUTTLE	7	5	38.1%							29	21	38.1%
KINGS CREEK SHUTTLE	9	11	-21.2%							26	33	-21.2%
SIERRA LAKES SHUTTLE	20	24	-15.3%							80	118	-32.2%
ROBERT SHARP SHUTTLE	18	6	200.0%							72	24	200.0%
AHEPA SHUTTLE	14	19	-25.0%							42	56	-25.0%
FEDERATION GARDENS SHUTTLE				18	18	-4.9%				70	92	-23.9%
Subtotal Contractor-Operated Lifeline Routes	68	65	5.3%	18	18	-4.9%				319	344	-7.3%
Percentage of All Bus Routes	0.1%	0.0%		0.0%	0.0%		0.0%	0.0%		0.0%	0.0%	
Other Circulator Route												
200-CUTLER BAY LOCAL	92	141	-34.9%	84	122	-31.1%	32	42		2,365	3,645	-35.1%
Percentage of All Bus Routes	0.1%	0.1%		0.1%	0.1%		0.1%	0.1%		0.1%	0.1%	
All Other (Regular) Routes	85,837	130,609	-34.3%	63,517	88,329	-28.1%	44,919	63,751	-29.5%	2,240,317	3,372,576	-33.6%
Percentage of All Bus Routes	83.2%	78.3%		88.6%	88.3%		89.0%	88.0%		84.5%	80.4%	
Total Bus System (1)	103,163	166,784	-38.1%	71,680	100,051	-28.4%	50,480	72,484	-30.4%	2,651,290	4,197,225	-36.8%

(1) Includes shuttles and routes which were not run both years.

(2) Nearly every bus route experienced year-over-year losses as a result of the SARS-CoV-2 pandemic; rides were fare-free beginning March 22, 2020.

(*) The following routes are entirely operated under contract: 1, 29, 34, 35, 39, 46, 56, 57, 71, 72, 82, 95, 101-A, 115, 135, 150, 155, 202, 210, 211, 212, 217, 248, 254, 267, 272, 286, 301, 302 and 344, although some supplemental runs may be performed by DTPW. Conversely, a few routes that are nominally run by DTPW may have a few supplemental runs operated by contractors; Dade-Monroe routes 301 and 302 as well as six Lifeline routes are also under contracted operation.

Several express routes were suspended at the end of March or the beginning of April 2020, due to the SARS-CoV-2 pandemic, while other routes had alignment and schedule modifications made to them, in an ongoing effort to optimize service delivery.

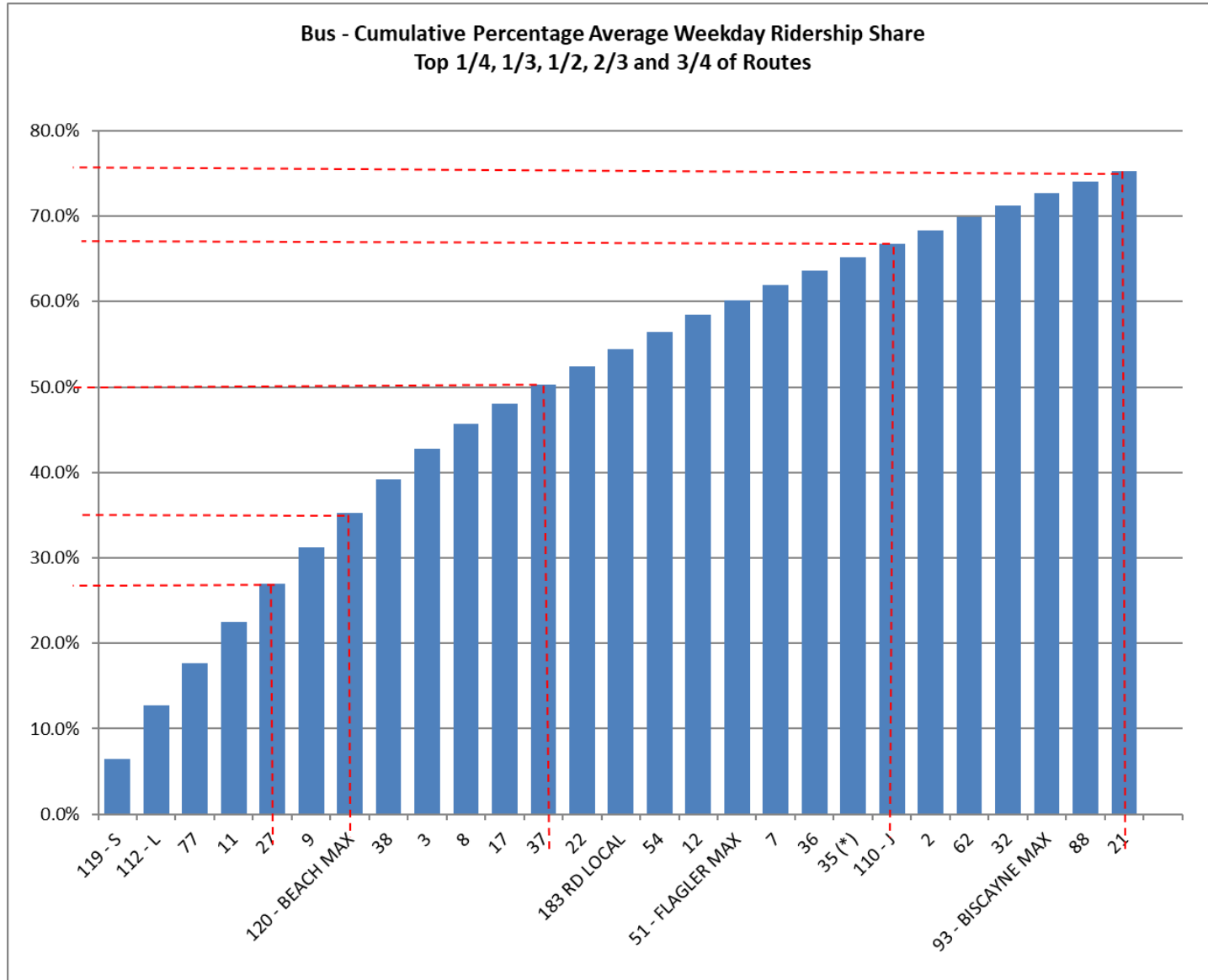
Bus Routes as Ranked by Percentage of Average Weekday Ridership

Rank	Route	Average Weekday	Percent Share	Cumul Pct Share	Rank	Route	Average Weekday	Percent Share	Cumul Pct Share	Rank	Route	Average Weekday	Percent Share	Cumul Pct Share
1	119	6,620	6.4%	6.4%	36	99	870	0.8%	84.2%	71	287	104	0.1%	99.1%
2	112	6,498	6.3%	12.7%	37	137	863	0.8%	85.1%	72	101	100	0.1%	99.2%
3	77	5,172	5.0%	17.7%	38	19	832	0.8%	85.9%	73	200	92	0.1%	99.3%
4	11	4,881	4.7%	22.5%	39	75	807	0.8%	86.7%	74	267	87	0.1%	99.3%
5	27	4,619	4.5%	26.9%	40	208	803	0.8%	87.4%	75	248	81	0.1%	99.4%
6	9	4,455	4.3%	31.3%	41	34	782	0.8%	88.2%	76	344	68	0.1%	99.5%
7	120	4,117	4.0%	35.2%	42	301	752	0.7%	88.9%	77	302	61	0.1%	99.5%
8	38	4,018	3.9%	39.1%	43	52	730	0.7%	89.6%	78	217	59	0.1%	99.6%
9	3	3,754	3.6%	42.8%	44	105	708	0.7%	90.3%	79	246	54	0.1%	99.7%
10	8	3,029	2.9%	45.7%	45	297	698	0.7%	91.0%	80	136	46	0.0%	99.7%
11	17	2,370	2.3%	48.0%	46	135	690	0.7%	91.7%	81	211	36	0.0%	99.7%
12	37	2,343	2.3%	50.3%	47	107	689	0.7%	92.3%	82	286	35	0.0%	99.8%
13	22	2,162	2.1%	52.4%	48	207	645	0.6%	93.0%	83	155	33	0.0%	99.8%
14	183	2,145	2.1%	54.5%	49	42	483	0.5%	93.4%	84	500	33	0.0%	99.8%
15	54	2,071	2.0%	56.5%	50	31	438	0.4%	93.9%	85	82	33	0.0%	99.9%
16	12	2,031	2.0%	58.4%	51	277	435	0.4%	94.3%	86	132	23	0.0%	99.9%
17	51	1,801	1.7%	60.2%	52	72	382	0.4%	94.6%	87	SL	20	0.0%	99.9%
18	7	1,797	1.7%	61.9%	53	252	369	0.4%	95.0%	88	RS	18	0.0%	99.9%
19	36	1,778	1.7%	63.6%	54	95	346	0.3%	95.3%	89	46	18	0.0%	99.9%
20	35	1,626	1.6%	65.2%	55	71	335	0.3%	95.7%	90	254	17	0.0%	100.0%
21	110	1,612	1.6%	66.8%	56	29	317	0.3%	96.0%	91	212	15	0.0%	100.0%
22	2	1,611	1.6%	68.3%	57	104	315	0.3%	96.3%	92	AS	14	0.0%	100.0%
23	62	1,565	1.5%	69.9%	58	113	300	0.3%	96.6%	93	KC	9	0.0%	100.0%
24	32	1,460	1.4%	71.3%	59	108	295	0.3%	96.9%	94	GH	7	0.0%	100.0%
25	93	1,427	1.4%	72.7%	60	238	288	0.3%	97.1%					
26	88	1,418	1.4%	74.0%	61	103	261	0.3%	97.4%					
27	21	1,330	1.3%	75.3%	62	57	232	0.2%	97.6%					
28	24	1,262	1.2%	76.5%	63	272	195	0.2%	97.8%					
29	73	1,220	1.2%	77.7%	64	115	193	0.2%	98.0%					
30	10	1,124	1.1%	78.8%	65	39	191	0.2%	98.2%					
31	16	1,098	1.1%	79.9%	66	102	188	0.2%	98.4%					
32	33	937	0.9%	80.8%	67	210	187	0.2%	98.5%					
33	40	933	0.9%	81.7%	68	56	164	0.2%	98.7%					
34	87	878	0.9%	82.5%	69	1	162	0.2%	98.8%					
35	150	870	0.8%	83.4%	70	202	127	0.1%	99.0%					
										Total	Boardings	103,163	100.0%	contracted

(1) Average weekday ridership rounded to the nearest unit.

(2) Includes the five Lifeline Shuttles that operate on weekdays: Ahepa, Green Hills, Kings Creek, Robert Sharp and Sierra Lakes.

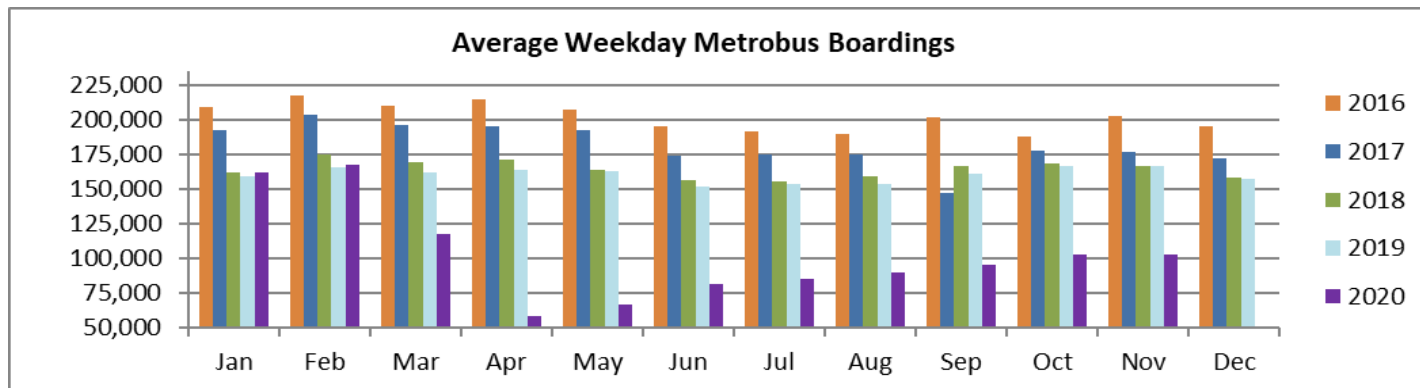
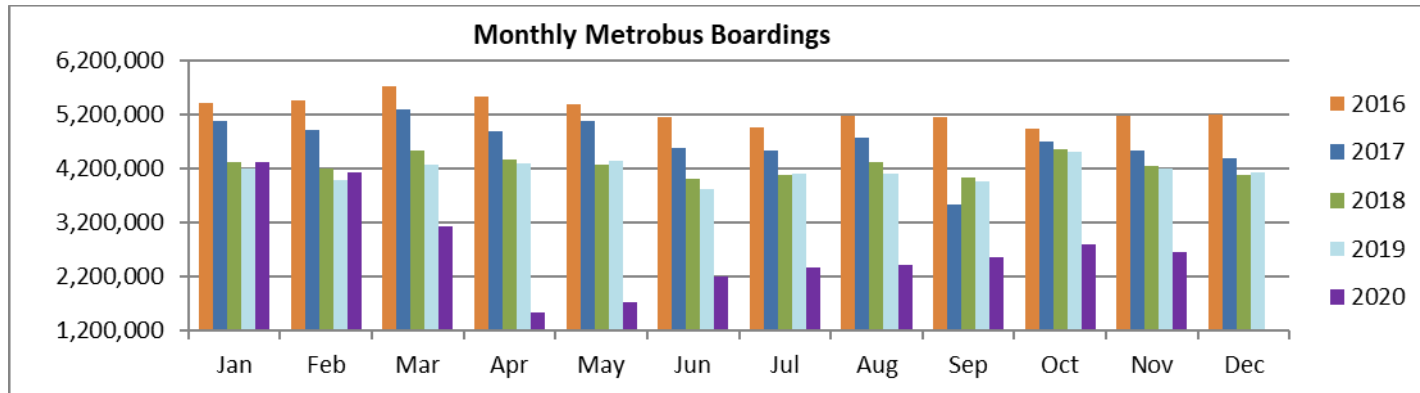
METROBUS CUMULATIVE PERCENTAGE RIDERSHIP SHARE BY ROUTE (TOP 75%)



(*) Route entirely run by contractor

November 2020

TOTAL MONTHLY AND AVERAGE WEEKDAY RIDERSHIP YEAR OVER YEAR COMPARISON CHARTS – METROBUS



**“TOP 5 / BOTTOM 5” BUS ROUTES AVERAGE WEEKDAY RIDERSHIP PERFORMANCE
YEAR OVER YEAR COMPARISONS**

Route	Nov-20	Nov-19	Absolute Delta (1)	Percent Delta (2)
115 (*)	193	159	34	21.5%
132 TRI-RAIL (DORAL)	23	6	17	296.5%
254 - BROWNSVILLE CIRC. (*)	17	17	1	3.4%
500	33	36	-3	-8.7%
155 - BISCAYNE GARDENS CIRCULATOR (*)	33	39	-6	-15.5%

120 - BEACH MAX	4,117	6,826	-2,708	-39.7%
38	4,018	6,622	-2,603	-39.3%
119 - S	6,620	8,978	-2,359	-26.3%
11	4,881	7,066	-2,185	-30.9%
27	4,619	6,712	-2,093	-31.2%

(*) Route entirely run by contractor.

(1) Averages rounded to the nearest boarding; Lifelines excluded.

(2) As a result of the SARS-CoV-2 pandemic, only 3 routes had actual gains in November 2020 compared with November 2019; rides were fare-free beginning March 22, 2020.

(†) Hurricane Eta significantly impacted ridership on Sunday, November 8 and Monday, November 9, 2020.

METROBUS PARKING PATRONAGE SUMMARY

November 2020

PARK-RIDE LOT	ACTUAL AVAILABLE SPACES	ACTUAL OCCUPANCY	PERCENT OCCUPANCY
Transitway / SW 152nd St	200	43	22%
Transitway / SW 168th St	149	36	24%
Transitway / SW 200th Street (effective February 2020)	100	28	28%
Transitway / SW 112 Ave (Target)	450	54	12%
Transitway / SW 244th St	95	24	25%
Transitway / SW 296th St	139	31	22%
Transitway / SW 344th St	248	114	46%
Coral Reef Drive 117/ Turnpike	95	47	49%
Golden Glades - East Lot	535	132	25%
Golden Glades - West Lot	1,007	50	5%
Hammocks Town Center (SW 152 Ave / SW 104 St)	50	0	0%
Kendall Dr./SW 127th Ave	161	5	3%
West Kendall Transit Term (Kendall Dr / SW162 Ave)	40	3	8%
NW 7th Avenue Transit Village (NW 7 Ave / NW 62 St)	25	21	84%
Miami Gardens Dr. / NW 73rd Ave	136	16	12%
Dolphin Station (effective Mar 2020)	348	3	1%
I-75 / Miami Gardens Dr (effective June 2019)	298	0	0%
TOTAL	4,076	607	15%

Note: some park-ride lots are joint-use and the number of park-ride vehicles may exceed the number of spaces allocated.

Metrorail



November 2020

METRORAIL MONTHLY AND AVERAGE DAILY BOARDINGS BY STATION

	Average Weekday	Average Weekday	Percent Change	Average Saturday	Average Saturday	Percent Change	Average Sunday	Average Sunday	Percent Change	Total Monthly	Total Monthly	Percent Change
STATIONS	Nov-20	Nov-19	20 vs 19	Nov-20	Nov-19	20 vs 19	Nov-20	Nov-19	20 vs 19	Nov-20	Nov-19	20 vs 19
ALLAPATTAH	1,169	1,885	-38.0%	752	996	-24.5%	528	772	-31.6%	29,212	45,416	-35.7%
BRICKELL	3,406	6,232	-45.3%	2,103	2,604	-19.2%	1,571	2,097	-25.1%	84,579	144,016	-41.3%
BROWNSVILLE	710	839	-15.4%	505	520	-3.0%	409	382	7.3%	18,449	20,905	-11.8%
CIVIC CENTER	2,343	5,926	-60.5%	575	926	-37.9%	489	713	-31.4%	50,543	121,023	-58.2%
COCONUT GROVE	924	1,701	-45.7%	569	833	-31.7%	399	651	-38.7%	22,834	40,217	-43.2%
CULMER	852	1,321	-35.5%	556	677	-17.8%	419	536	-21.8%	21,571	31,624	-31.8%
DADELAND NORTH	2,716	5,832	-53.4%	1,460	1,924	-24.1%	1,076	1,454	-26.0%	65,172	128,684	-49.4%
DADELAND SOUTH	2,316	7,120	-67.5%	1,512	2,580	-41.4%	1,030	2,000	-48.5%	57,717	159,249	-63.8%
DOUGLAS ROAD	1,605	3,555	-54.9%	1,006	1,333	-24.6%	625	969	-35.5%	39,210	79,562	-50.7%
DR. MARTIN LUTHER KING, JR.	740	1,162	-36.3%	532	621	-14.3%	349	472	-26.1%	18,776	27,936	-32.8%
EARLINGTON HEIGHTS	937	1,582	-40.8%	651	894	-27.1%	374	730	-48.8%	23,364	38,851	-39.9%
GOVERNMENT CENTER	3,033	10,067	-69.9%	1,850	3,753	-50.7%	1,062	2,956	-64.1%	73,353	224,191	-67.3%
HIALEAH	709	1,286	-44.9%	422	613	-31.2%	271	449	-39.6%	17,270	30,242	-42.9%
MIAMI INTERNATIONAL AIRPORT	638	1,692	-62.3%	612	1,304	-53.0%	429	1,265	-66.1%	17,716	46,394	-61.8%
NORTHSIDE	852	1,367	-37.6%	619	851	-27.3%	470	652	-27.9%	21,900	34,296	-36.1%
OKEECHOBEE	608	1,137	-46.6%	320	398	-19.7%	155	253	-38.8%	14,110	25,070	-43.7%
OVERTOWN / ARENA	701	2,166	-67.6%	421	552	-23.8%	324	464	-30.1%	17,206	45,787	-62.4%
PALMETTO	721	1,358	-46.9%	310	348	-11.1%	149	216	-31.0%	16,339	28,742	-43.2%
SANTA CLARA	482	778	-38.0%	301	394	-23.8%	184	271	-32.2%	11,845	18,470	-35.9%
SOUTH MIAMI	1,292	2,914	-55.7%	701	1,173	-40.2%	515	849	-39.4%	31,142	65,953	-52.8%
TRI-RAIL	708	1,139	-37.9%	398	542	-26.6%	271	437	-37.9%	17,132	26,974	-36.5%
UNIVERSITY	588	2,595	-77.4%	311	662	-53.1%	191	490	-61.0%	13,792	55,224	-75.0%
VIZCAYA	670	1,321	-49.3%	428	604	-29.1%	211	448	-52.9%	16,261	30,622	-46.9%
TOTAL	28,721	64,976	-55.8%	16,909	25,101	-32.6%	11,500	19,523	-41.1%	699,492	1,469,448	-52.4%

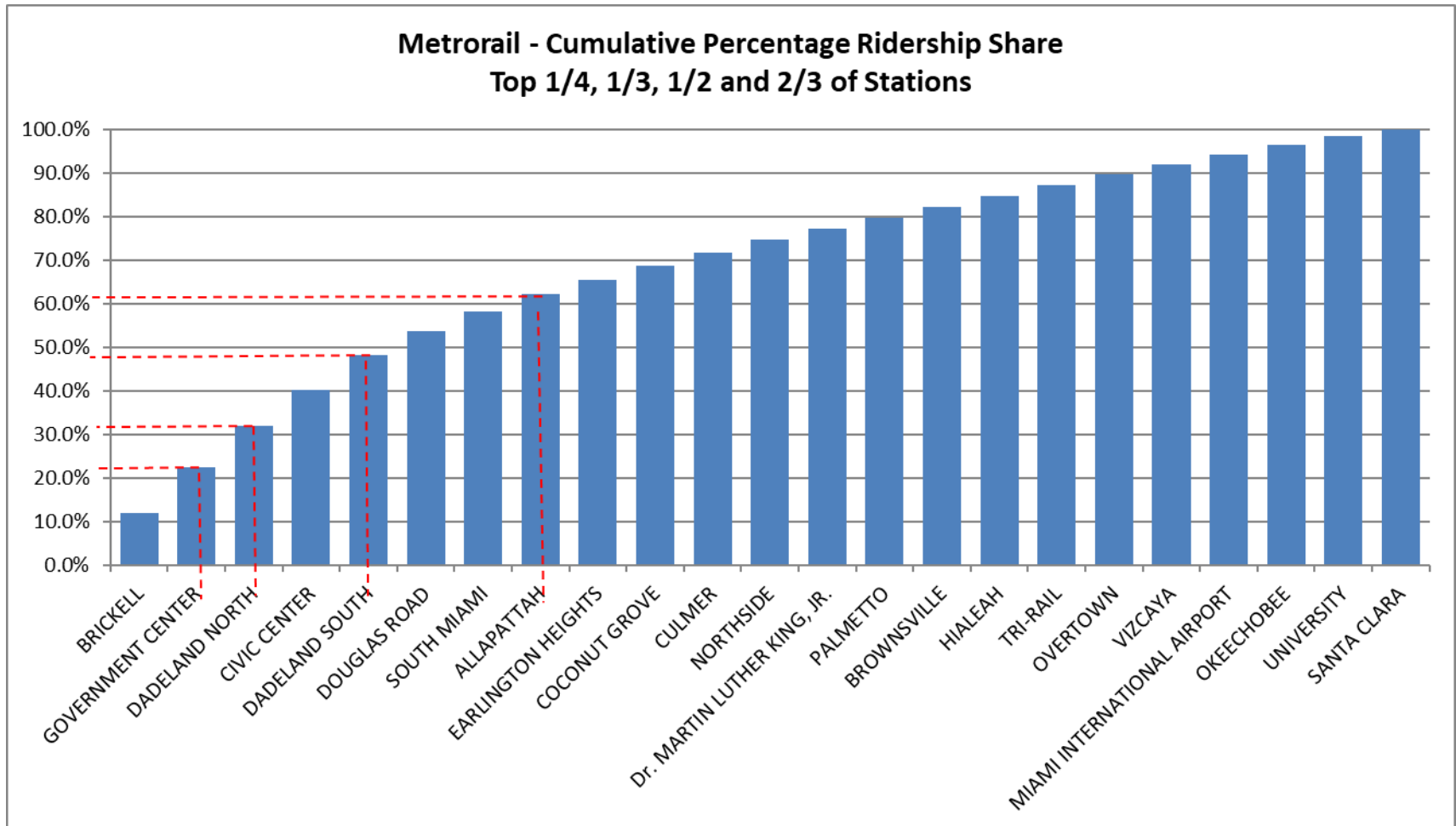
(†) All Metrorail stations reported net YOY losses in average weekday ridership in November 2020, due to effects from the SARS-CoV-2 pandemic; rides were fare-free beginning March 22, 2020.

(††) Hurricane Eta significantly impacted ridership on Sunday, November 8 and Monday, November 9, 2020.

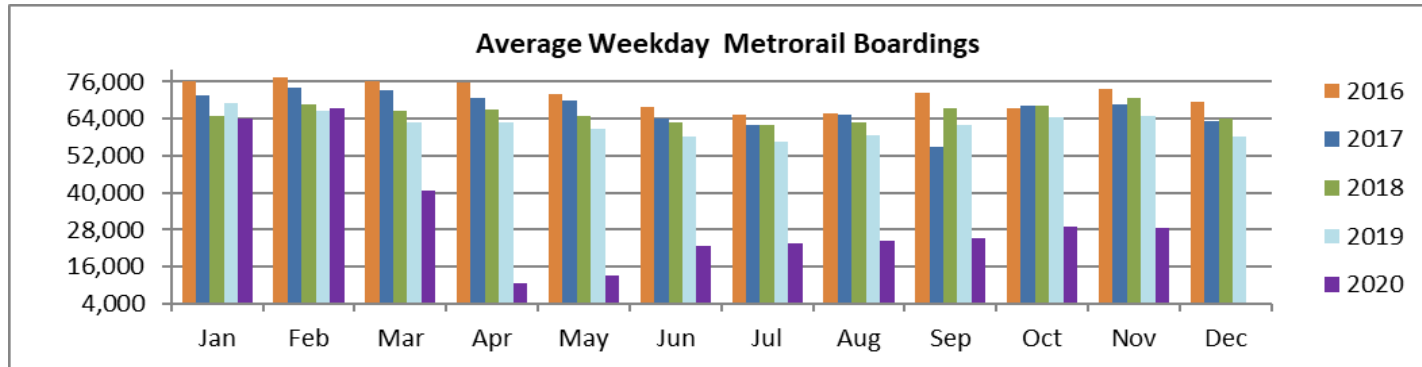
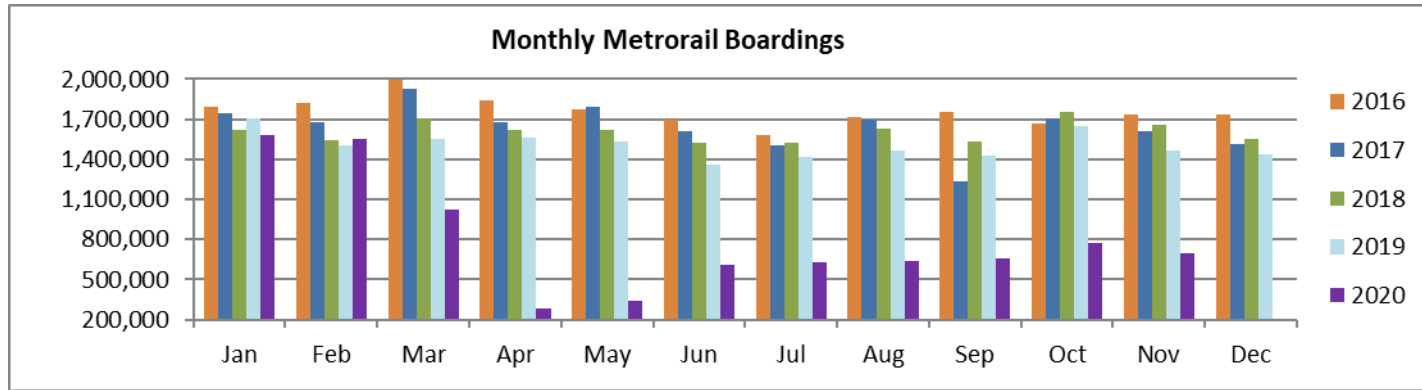
METRORAIL HOLIDAY BOARDINGS BY STATION

	Veterans Day	Veterans Day	Percent Change	Thanksgiving Day	Thanksgiving Day	Percent Change	Friday-after-Thanksgiving	Friday-after-Thanksgiving	Percent Change
STATIONS	2019	2020	20 vs 19	2019	2020	20 vs 19	2019	2020	20 vs 19
ALLAPATTAH	1,425	1,164	-18.3%	739	407	-44.9%	1,256	946	-24.7%
BRICKELL	5,006	3,349	-33.1%	1,800	1,015	-43.6%	3,628	2,639	-27.3%
BROWNSVILLE	666	718	7.8%	377	274	-27.3%	639	617	-3.4%
CIVIC CENTER	4,174	2,024	-51.5%	681	504	-26.0%	2,024	1,088	-46.2%
COCONUT GROVE	1,277	895	-29.9%	553	311	-43.8%	1,006	721	-28.3%
CULMER	925	821	-11.2%	543	429	-21.0%	845	656	-22.4%
DADELAND NORTH	3,783	2,475	-34.6%	1,133	566	-50.0%	3,354	2,029	-39.5%
DADELAND SOUTH	4,887	2,144	-56.1%	1,658	735	-55.7%	3,651	1,951	-46.6%
DOUGLAS ROAD	2,355	1,493	-36.6%	812	466	-42.6%	1,856	1,215	-34.5%
DR. MARTIN LUTHER KING, JR.	820	703	-14.3%	445	246	-44.7%	755	628	-16.8%
EARLINGTON HEIGHTS	1,231	918	-25.4%	662	378	-42.9%	1,090	733	-32.8%
GOVERNMENT CENTER	5,418	2,833	-47.7%	2,197	976	-55.6%	4,780	2,238	-53.2%
HIALEAH	956	658	-31.2%	426	242	-43.2%	850	573	-32.6%
MIAMI INTERNATIONAL AIRPORT	1,650	568	-65.6%	1,232	439	-64.4%	1,485	629	-57.6%
NORTHSIDE	1,109	877	-20.9%	641	266	-58.5%	1,078	592	-45.1%
OKEECHOBEE	784	567	-27.7%	279	169	-39.4%	535	386	-27.9%
OVERTOWN / ARENA	1,048	558	-46.8%	378	248	-34.4%	758	481	-36.5%
PALMETTO	977	712	-27.1%	188	178	-5.3%	534	486	-9.0%
SANTA CLARA	576	456	-20.8%	286	205	-28.3%	547	382	-30.2%
SOUTH MIAMI	2,035	1,309	-35.7%	654	287	-56.1%	1,546	911	-41.1%
TRI-RAIL	961	677	-29.6%	358	242	-32.4%	689	523	-24.1%
UNIVERSITY	2,320	580	-75.0%	240	136	-43.3%	683	301	-55.9%
VIZCAYA	911	671	-26.3%	375	236	-37.1%	746	536	-28.2%
TOTAL	45,294	27,170	-40.0%	16,657	8,955	-46.2%	34,335	21,261	-38.1%

METRORAIL CUMULATIVE PERCENTAGE RIDERSHIP SHARE



TOTAL MONTHLY AND AVERAGE WEEKDAY RIDERSHIP YEAR OVER YEAR COMPARISON CHARTS – METRORAIL



**“TOP 5 / BOTTOM 5” RAIL STATIONS AVERAGE WEEKDAY RIDERSHIP PERFORMANCE
YEAR OVER YEAR COMPARISONS**

Station	Nov-20	Nov-19	Absolute Delta (1)	Percent Delta
BROWNSVILLE	710	839	-129	-15.4%
SANTA CLARA	482	778	-296	-38.0%
Dr. MARTIN LUTHER KING, JR.	740	1,162	-422	-36.3%
TRI-RAIL	708	1,139	-432	-37.9%
CULMER	852	1,321	-469	-35.5%
GOVERNMENT CENTER	3,033	10,067	-7,034	-69.9%
DADELAND SOUTH	2,316	7,120	-4,803	-67.5%
CIVIC CENTER	2,343	5,926	-3,582	-60.5%
DADELAND NORTH	2,716	5,832	-3,116	-53.4%
BRICKELL	3,406	6,232	-2,826	-45.3%

(1) Averages rounded to the nearest boarding.

(†) All Metrorail stations reported net losses in November 2020, due to effects on ridership from the SARS-CoV-2 pandemic.

(††) Hurricane Eta significantly impacted ridership on Sunday, November 8 and Monday, November 9, 2020.

METRORAIL PARKING PATRONAGE SUMMARY

November 2020

PARK-RIDE LOT	ACTUAL CAPACITY (1)	ACTUAL OCCUPANCY (2)	PERCENT OCCUPANCY
DADELAND SOUTH	1,280		
DADELAND NORTH	1,963		
SOUTH MIAMI	1,081		
UNIVERSITY	260		
DOUGLAS ROAD	150		
COCONUT GROVE	100		
VIZCAYA	120		
CULMER	40		
SANTA CLARA	61		
ALLAPATTAH	74		
EARLINGTON HEIGHTS	361		
BROWNSVILLE	100		
DR. MARTIN LUTHER KING JR. (MDT)	62		
DR. MARTIN LUTHER KING JR. (GARAGE)	631		
NORTHSIDE	197		
HIALEAH	338		
OKEECHOBEE	1,398		
PALMETTO	700		
TOTAL	8,916		

(1) Number of spaces could vary each week; shown are available spaces during final week of month.

(2) Averages rounded to nearest unit; no counts effected in November 2020 due to reassignment of staff as result of SARS-CoV-2 pandemic.

Metromover



METROMOVER MONTHLY AND AVERAGE DAILY BOARDINGS BY STATION

	Average Weekday	Average Weekday	Percent Change	Average Saturday	Average Saturday	Percent Change	Average Sunday	Average Sunday	Percent Change	Total Monthly	Total Monthly	Percent Change
STATIONS	Nov-20	Nov-19	20 vs 19	Nov-20	Nov-19	20 vs 19	Nov-20	Nov-19	20 vs 19	Nov-20	Nov-19	20 vs 19
School Board	403	861	-53.2%	348	685	-49.3%	279	599	-53.4%	11,242	23,318	-51.8%
Omni	654	1,953	-66.5%	580	1,648	-64.8%	413	1,290	-68.0%	17,585	52,875	-66.7%
Museum Park	75	174	-57.2%	95	285	-66.8%	88	198	-55.4%	2,457	6,114	-59.8%
Eleventh Street	133	259	-48.5%	101	286	-64.7%	71	210	-66.2%	3,480	7,523	-53.7%
Park West	201	338	-40.5%	176	351	-49.9%	109	266	-58.9%	5,279	9,735	-45.8%
Freedom Tower (1)		507			565			416			14,710	
Government Center	1,206	7,714	-84.4%	872	2,274	-61.7%	698	1,735	-59.8%	31,479	163,524	-80.7%
Miami Avenue	213	469	-54.5%	140	296	-52.6%	142	247	-42.5%	5,640	11,229	-49.8%
Third Street	172	368	-53.2%	125	237	-47.5%	113	301	-62.3%	4,655	9,927	-53.1%
Knight Center	269	1,094	-75.5%	140	512	-72.6%	143	392	-63.4%	6,754	25,503	-73.5%
Bayfront Park	869	3,069	-71.7%	768	2,354	-67.4%	602	1,873	-67.9%	23,948	81,642	-70.7%
First Street	593	1,687	-64.8%	475	1,234	-61.5%	436	1,081	-59.6%	16,295	44,358	-63.3%
College/Bayside	572	2,333	-75.5%	495	1,686	-70.6%	373	1,490	-75.0%	15,553	60,255	-74.2%
College North	230	1,058	-78.2%	131	395	-66.8%	80	366	-78.2%	5,472	23,389	-76.6%
Wilkie D. Ferguson	283	568	-50.1%	249	301	-17.5%	199	250	-20.4%	7,758	13,770	-43.7%
Riverwalk	203	847	-76.0%	142	524	-73.0%	112	383	-70.7%	5,230	20,933	-75.0%
Fifth Street	201	553	-63.6%	118	362	-67.3%	84	291	-71.3%	5,013	13,864	-63.8%
Eighth Street	492	2,164	-77.3%	510	1,719	-70.4%	349	1,395	-75.0%	14,191	58,129	-75.6%
Tenth Street	342	756	-54.7%	286	576	-50.3%	182	490	-62.9%	9,024	19,998	-54.9%
Brickell	1,159	4,121	-71.9%	1,076	2,571	-58.2%	829	2,195	-62.3%	32,199	103,088	-68.8%
Financial District	367	1,492	-75.4%	242	773	-68.7%	162	612	-73.5%	9,168	35,748	-74.4%
TOTAL	8,638	32,384	-73.3%	7,066	19,633	-64.0%	5,463	16,077	-66.0%	232,422	799,632	-70.9%

(1) Freedom Tower Station was closed for construction throughout November 2020.

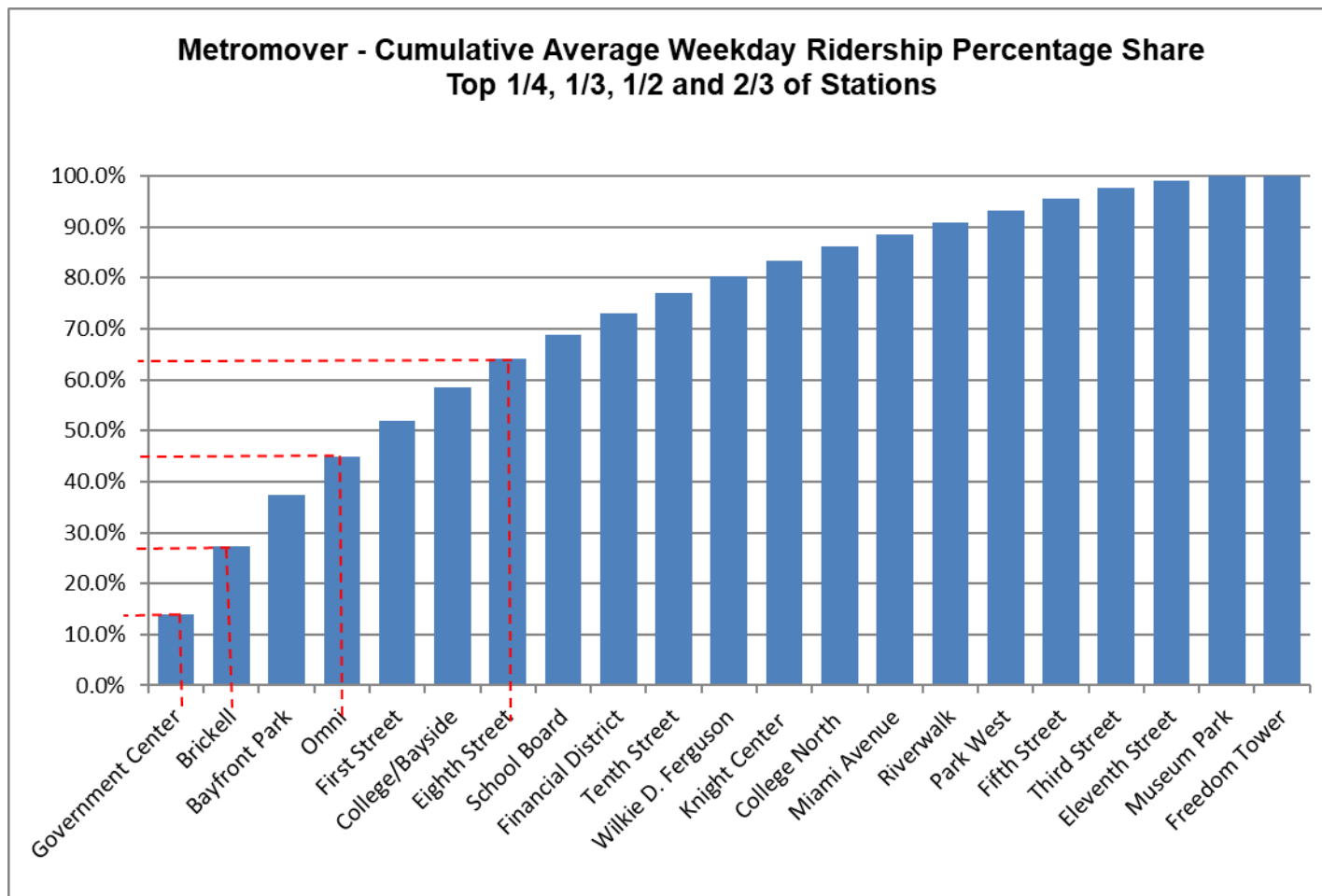
(†) Hurricane Eta significantly impacted ridership on Sunday, November 8 and Monday, November 9, 2020.

METROMOVER HOLIDAY BOARDINGS BY STATION

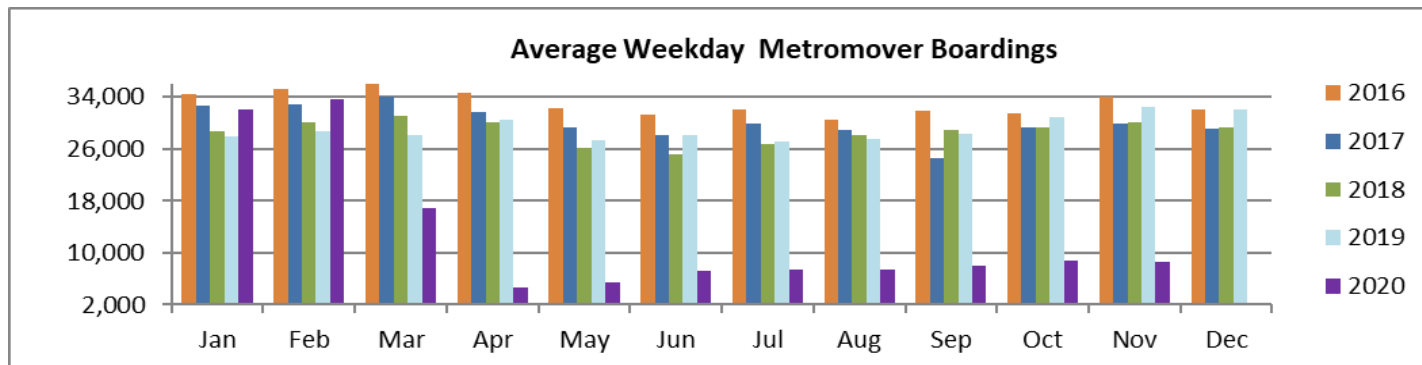
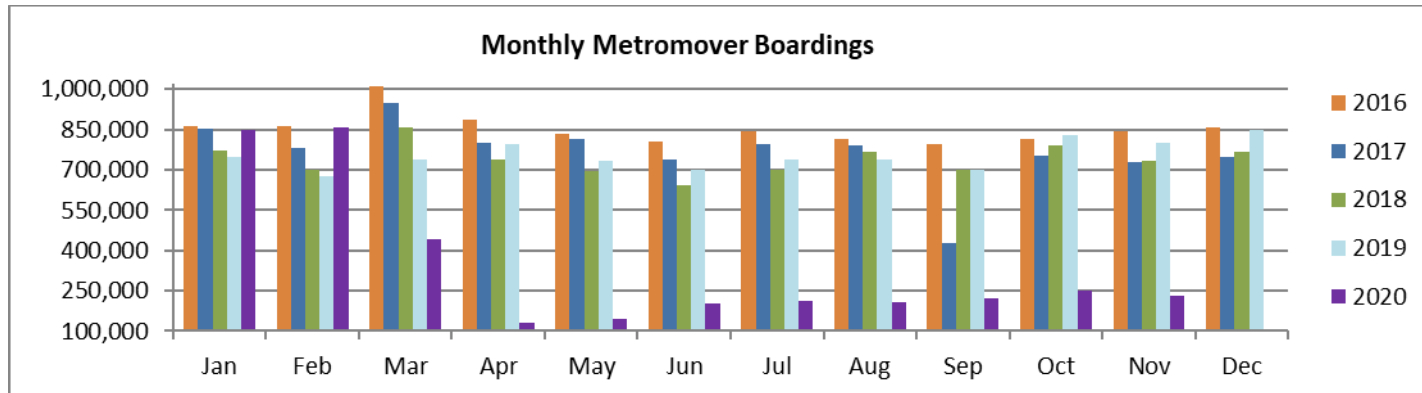
	Veterans Day	Veterans Day	Percent Change	Thanksgiving Day	Thanksgiving Day	Percent Change	Friday-after-Thanksgiving	Friday-after-Thanksgiving	Percent Change
STATIONS	2019	2020	20 vs 19	2019	2020	20 vs 19	2019	2020	20 vs 19
School Board	736	405	-45.0%	493	303	-38.5%	768	491	-36.1%
Omni	1,526	729	-52.2%	1,069	301	-71.8%	1,727	410	-76.3%
Museum Park	288	103	-64.2%	131	86	-34.4%	347	108	-68.9%
Eleventh Street	237	132	-44.3%	150	75	-50.0%	213	120	-43.7%
Park West	282	234	-17.0%	132	56	-57.6%	413	114	-72.4%
Freedom Tower	259			178			668		
Government Center	2,682	1,014	-62.2%	1,323	721	-45.5%	2,364	1,052	-55.5%
Miami Avenue	327	208	-36.4%		134			189	
Third Street	366	165	-54.9%	193	184	-4.7%	360	143	-60.3%
Knight Center	729	247	-66.1%	340	166	-51.2%	609	229	-62.4%
Bayfront Park	2,684	670	-75.0%	1,554	708	-54.4%	2,909	856	-70.6%
First Street	1,394	587	-57.9%	735	371	-49.5%	1,373	578	-57.9%
College/Bayside	1,372	514	-62.5%	924	362	-60.8%	1,584	533	-66.4%
College North	330	195	-40.9%	168	75	-55.4%	405	134	-66.9%
Wilkie D. Ferguson	427	247	-42.2%	243	176	-27.6%	377	249	-34.0%
Riverwalk	646	166	-74.3%	360	123	-65.8%	520	157	-69.8%
Fifth Street	400	259	-35.3%	216	111	-48.6%	325	134	-58.8%
Eighth Street	1,807	517	-71.4%	840	338	-59.8%	2,361	703	-70.2%
Tenth Street	569	407	-28.5%	317	158	-50.2%	664	246	-63.0%
Brickell	2,984	1,205	-59.6%	1,529	715	-53.2%	2,751	968	-64.8%
Financial District	1,052	327	-68.9%	475	195	-58.9%	1,048	257	-75.5%
TOTAL	21,097	8,331	-60.5%	11,370	5,358	-52.9%	21,786	7,671	-64.8%

(†) No data reported at a few stations, on some holidays

METROMOVER CUMULATIVE PERCENTAGE RIDERSHIP SHARE



TOTAL MONTHLY AND AVERAGE WEEKDAY RIDERSHIP YEAR OVER YEAR COMPARISON CHARTS – METROMOVER



“TOP 5 / BOTTOM 5” MOVER STATIONS AVERAGE WEEKDAY RIDERSHIP PERFORMANCE YEAR OVER YEAR COMPARISONS

Station	Nov-20	Nov-19	Absolute Delta (1)	Percent Delta
Museum Park	75	174	-100	-57.2%
Eleventh Street	133	259	-125	-48.5%
Park West	201	338	-137	-40.5%
Third Street	172	368	-196	-53.2%
Miami Avenue	213	469	-255	-54.5%

Government Center	1,206	7,714	-6,507	-84.4%
Brickell	1,159	4,121	-2,962	-71.9%
Bayfront Park	869	3,069	-2,200	-71.7%
College/Bayside	572	2,333	-1,760	-75.5%
Eighth Street	492	2,164	-1,672	-77.3%

(1) Averages rounded to the nearest boarding.

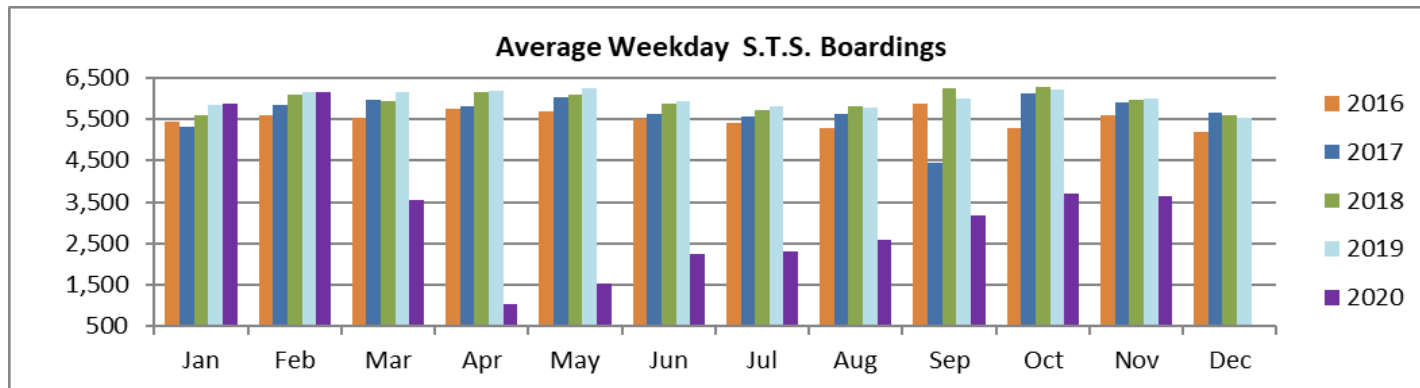
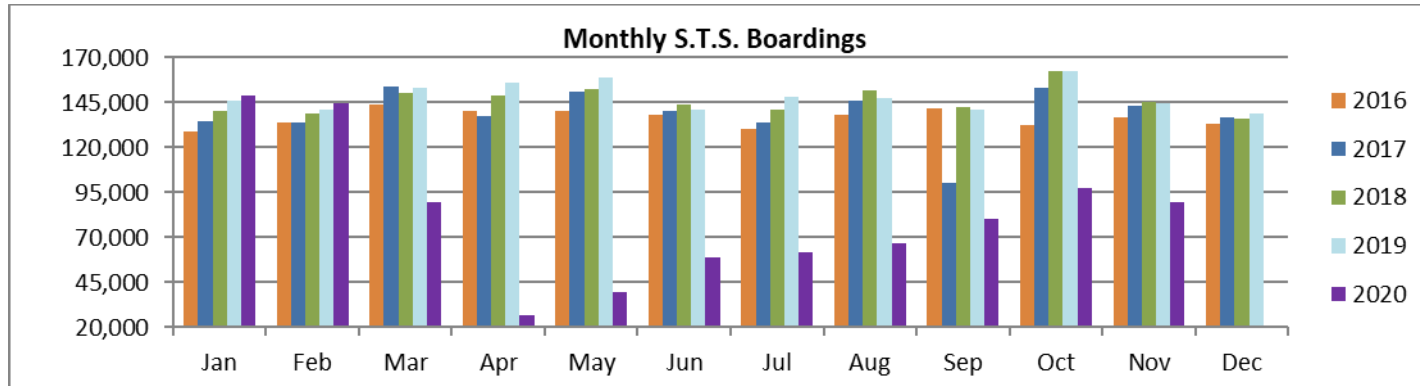
(†) All Metromover stations reported net YOY losses in November 2020, due to effects on ridership from the SARS-CoV-2 pandemic.

(††) Hurricane Eta significantly impacted ridership on Sunday, November 8 and Monday, November 9, 2020.

Special Transportation Services



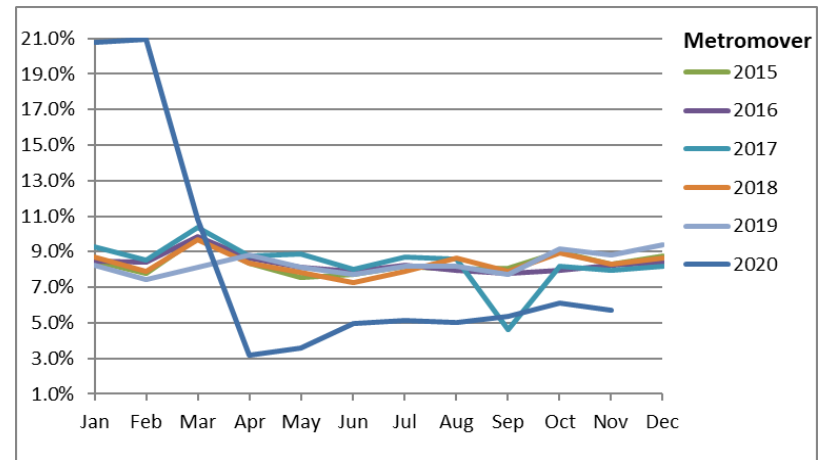
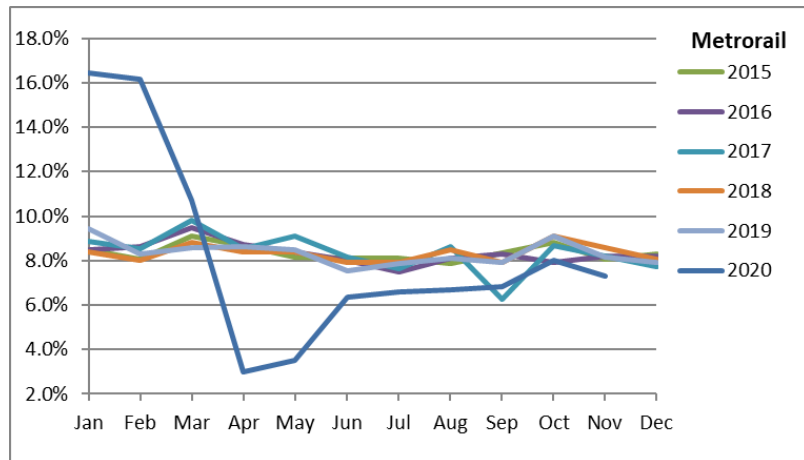
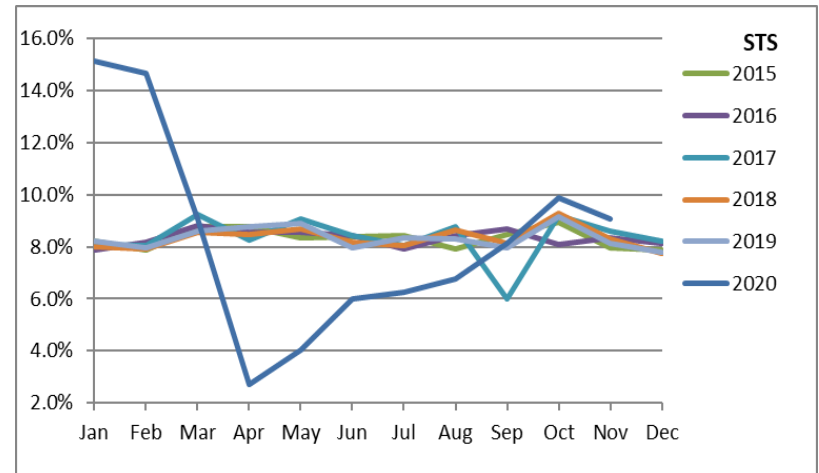
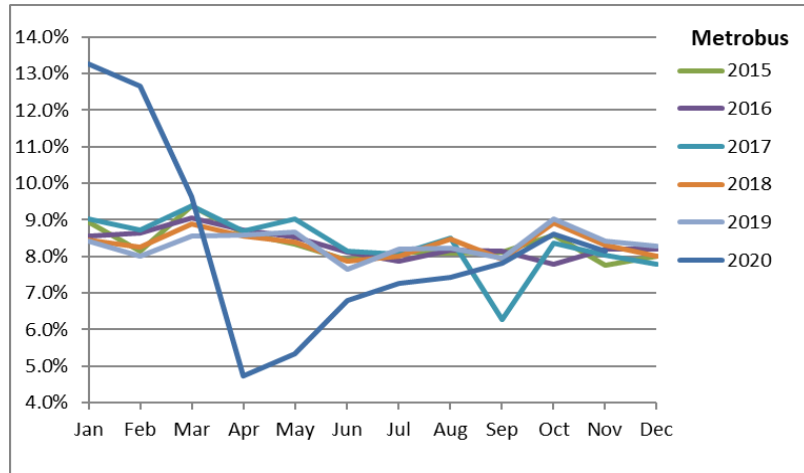
TOTAL MONTHLY AND AVERAGE WEEKDAY RIDERSHIP YEAR OVER YEAR COMPARISON CHARTS – SPECIAL TRANSPORTATION SERVICES (S.T.S.)



Ridership Seasonality



RIDERSHIP SEASONALITY – PERCENT RIDERSHIP SHARE BY MONTH AND CALENDAR YEAR FOR EACH MODE



Note: the prominent dips seen in the fall of 2017 and beginning in the spring of 2020 are due to Hurricane Irma and the SARS-CoV-2 pandemic, respectively.