



TRANSPORTATION AND PUBLIC WORKS

RIDERSHIP TECHNICAL REPORT

Division of Performance and Materials Management



December 2020

Table of Contents

<i>Table of Contents</i>	2-3
All Modes Overview	4
Total Monthly Weekday, Saturday and Sunday Monthly Boardings By Mode	5
Average Weekday, Saturday and Sunday Boardings by Mode	6
All-Modes Combined Total Monthly Ridership Comparisons By Fiscal Year	7
All Modes Combined Total Monthly and Average Weekday Ridership – Year over Year Comparison Charts	8
Metrobus Total Monthly Ridership Comparisons by Fiscal Year	9
Metrorail Total Monthly Ridership Comparisons by Fiscal Year	10
Metromover Total Monthly Ridership Comparisons by Fiscal Year	11
STS Total Monthly Ridership Comparisons by Fiscal Year	12
Average Weekday Ridership – Modal Splits	13
Metrobus	14
Monthly and Average Daily Bus Boardings by Route	15-18
Metrobus Holiday Boardings By Route	19
Bus Ridership by Service Type	20-21
Bus Routes as Ranked by Percentage of Average Weekday Ridership	22
Metrobus Cumulative Percentage Average Weekday Ridership Share by Route (Top 75%)	23
Total Monthly and Average Weekday Rail Ridership – Year over Year Comparison Charts	24

Table of Contents (continued)

Metrobus (Continued)

Bus “Top 5 / Bottom 5” Routes Average Weekday Ridership Performance 25

Metrobus Parking Patronage Summary 26

Metrorail 27

Monthly and Average Daily Rail Boardings by Station 28

Metrorail Holiday Boardings by Station 29

Metrorail Cumulative Percentage Average Weekday Ridership Share 30

Total Monthly and Average Weekday Rail Ridership – Year over Year Comparison Charts 31

“Top 5 / Bottom 5” Stations Average Weekday Ridership Performance 32

Metrorail Parking Patronage Summary 33

Metromover 34

Monthly and Average Daily Mover Boardings by Station 35

Metromover Cumulative Percentage Average Weekday Ridership Share 36

Total Monthly and Average Weekday Mover Ridership – Year over Year Comparison Charts 37

“Top 5 / Bottom 5” Stations Average Weekday Ridership Performance 38

Special Transportation Services (STS) 39

Total Monthly and Average Weekday STS Ridership – Year over Year Comparison Charts 40

Ridership Seasonality 41

Ridership Seasonality – Percent Ridership Share by Month and Calendar year for Each Mode 42

All Modes Overview



TOTAL MONTHLY WEEKDAY, SATURDAY AND SUNDAY BOARDINGS BY MODE December 2020

TRAVEL MODE	MONTH'S TOTAL WEEKDAYS RIDERSHIP	MONTH'S TOTAL SATURDAYS RIDERSHIP	MONTH'S TOTAL SUNDAYS RIDERSHIP	TOTAL MONTHLY RIDERSHIP	% CHANGE vs Dec 2019 TOTAL MONTH RIDERSHIP
METROBUS	2,449,446	299,442	273,642	3,022,530	-26.8%
METRORAIL	634,775	70,774	63,645	769,194	-46.4%
METROMOVER	191,870	28,812	30,337	251,019	-70.5%
STS	80,816	8,237	7,313	96,366	-30.5%
TOTAL	3,356,907	407,265	374,937	4,139,109	-36.8%

(*) December 25, 2020 (Christmas Day) ridership was as follows:

Metrobus	38,183
Metrorail	10,864
Metromover	5,646
STS	927

- (1) As a result of the SARS-CoV-2 pandemic, Metrobus rides became fare-free on March 22, 2020; consequently, NextFare System farebox data was replaced by bus automatic passenger counter data starting on that date.
- (2) As a result of the SARS-CoV-2 pandemic, Metrorail rides became fare-free on March 22, 2020; consequently, NextFare System faregate data was replaced manually-counted data and other estimates starting on that date.
- (3) Beginning March 13, 2020 (day of National Emergency Declaration due to SARS-CoV-2 pandemic), only raw data from Metromover automatic passenger counters is reported; no estimates are performed after March 13, 2020.
- (4) Paratransit ridership data as reported by the contractor.

AVERAGE WEEKDAY, SATURDAY AND SUNDAY BOARDINGS BY MODE
December 2020

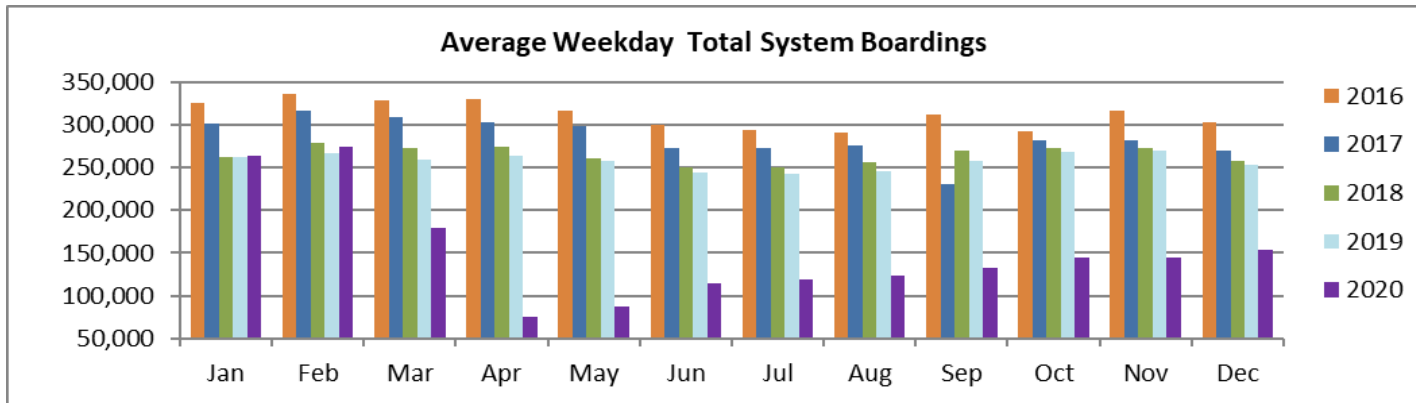
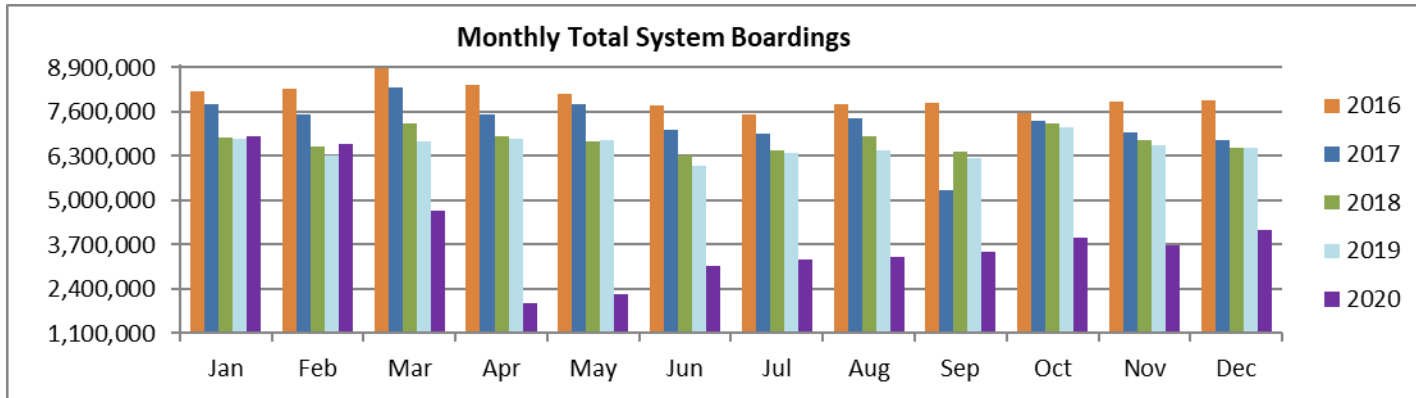
Travel Mode	Average Weekday	Average Saturday	Average Sunday	% Change Dec 2019 Weekday	% Change Dec 2019 Saturday	% Change Dec 2019 Sunday
METROBUS	111,394	74,861	54,728	-29.3%	-23.9%	-23.4%
METRORAIL	29,097	17,825	13,282	-50.1%	-28.7%	-31.7%
METROMOVER	9,120	7,822	6,661	-71.5%	-62.1%	-59.2%
STS	3,673	2,059	1,463	-33.4%	-20.2%	-29.3%
Totals (1)	153,285	102,567	76,134	-39.5%	-30.0%	-30.3%

(*) Average Sunday ridership includes Christmas Day for Metrobus and STS, but excludes it for Metrorail and Metromover

ALL-MODES COMBINED TOTAL MONTHLY RIDERSHIP COMPARISONS BY FISCAL YEAR

All Modes Month	FY 17	FY 18	FY 19	FY 20	FY 21	17 TO 18	18 TO 19	19 TO 20	20 TO 21	17 TO 21
Oct	7,543,706	7,322,886	7,265,208	7,144,116	3,922,096	-2.9%	-0.8%	-1.7%	-45.1%	-48.0%
Nov	7,894,500	7,005,032	6,783,315	6,610,671	3,672,591	-11.3%	-3.2%	-2.5%	-44.4%	-53.5%
Dec	7,919,860	6,783,192	6,538,734	6,549,392	4,139,109	-14.4%	-3.6%	0.2%	-36.8%	-47.7%
Jan	7,814,784	6,834,741	6,797,602	6,890,225		-12.5%	-0.5%	1.4%		
Feb	7,505,125	6,591,531	6,312,033	6,671,991		-12.2%	-4.2%	5.7%		
Mar	8,317,082	7,244,805	6,712,624	4,694,315		-12.9%	-7.3%	-30.1%		
Apr	7,513,151	6,869,802	6,802,085	1,989,545		-8.6%	-1.0%	-70.8%		
May	7,841,691	6,742,402	6,755,829	2,258,413		-14.0%	0.2%	-66.6%		
Jun	7,069,455	6,318,979	6,026,467	3,082,213		-10.6%	-4.6%	-48.9%		
Jul	6,969,807	6,449,526	6,402,110	3,272,074		-7.5%	-0.7%	-48.9%		
Aug	7,408,607	6,879,929	6,460,375	3,335,847		-7.1%	-6.1%	-48.4%		
Sep	5,284,604	6,412,945	6,240,212	3,501,209		21.4%	-2.7%	-43.9%		
FY Total	89,082,372	81,455,770	79,096,594	56,000,011		-8.6%	-2.9%	-29.2%		

TOTAL MONTHLY AND AVERAGE WEEKDAY RIDERSHIP YEAR OVER YEAR COMPARISON CHARTS – ALL MODES COMBINED



METROBUS TOTAL MONTHLY RIDERSHIP COMPARISONS BY FISCAL YEAR

Bus	FY 17	FY 18	Variance 17 to 18	FY 19	Variance 18 to 19	FY 20	Variance 19 to 20	FY 21	Variance 20 to 21	Variance 17 to 21
Oct	4,925,781	4,709,590	-4.4%	4,554,886	-3.3%	4,507,012	-1.1%	2,805,139	-37.8%	-43.1%
Nov	5,181,524	4,522,250	-12.7%	4,245,535	-6.1%	4,197,225	-1.1%	2,651,290	-36.8%	-48.8%
Dec	5,192,692	4,380,099	-15.6%	4,081,581	-6.8%	4,126,990	1.1%	3,022,530	-26.8%	-41.8%
Jan	5,084,085	4,307,001	-15.3%	4,195,911	-2.6%	4,316,998	2.9%			
Feb	4,914,307	4,208,811	-14.4%	3,994,019	-5.1%	4,123,083	3.2%			
Mar	5,287,813	4,534,564	-14.2%	4,266,768	-5.9%	3,136,162	-26.5%			
Apr	4,895,697	4,360,997	-10.9%	4,291,135	-1.6%	1,544,316	-64.0%			
May	5,087,877	4,277,628	-15.9%	4,330,922	1.2%	1,734,609	-59.9%			
Jun	4,586,556	4,009,340	-12.6%	3,823,863	-4.6%	2,210,725	-42.2%			
Jul	4,539,259	4,080,664	-10.1%	4,094,906	0.3%	2,366,749	-42.2%			
Aug	4,780,589	4,326,980	-9.5%	4,109,613	-5.0%	2,422,014	-41.1%			
Sep	3,524,818	4,041,992	14.7%	3,971,220	-1.8%	2,546,923	-35.9%			
FY Total	58,000,998	51,759,916	-10.8%	49,960,359	-3.5%	37,232,806	-25.5%			

METRORAIL TOTAL MONTHLY RIDERSHIP COMPARISONS BY FISCAL YEAR

Rail	FY 17	FY 18	Variance 17 to 18	FY 19	Variance 18 to 19	FY 20	Variance 19 to 20	FY 21	Variance 20 to 21	Variance 17 to 21
Oct	1,670,933	1,708,564	2.3%	1,757,225	2.8%	1,643,166	-6.5%	769,525	-53.2%	-53.9%
Nov	1,734,267	1,609,888	-7.2%	1,656,929	2.9%	1,469,448	-11.3%	699,492	-52.4%	-59.7%
Dec	1,734,768	1,517,341	-12.5%	1,553,804	2.4%	1,433,928	-7.7%	769,194	-46.4%	-55.7%
Jan	1,743,638	1,615,576	-7.3%	1,708,695	5.8%	1,576,340	-7.7%			
Feb	1,676,215	1,545,581	-7.8%	1,501,458	-2.9%	1,549,118	3.2%			
Mar	1,926,434	1,700,714	-11.7%	1,554,851	-8.6%	1,027,319	-33.9%			
Apr	1,677,459	1,619,890	-3.4%	1,559,446	-3.7%	287,803	-81.5%			
May	1,787,885	1,618,504	-9.5%	1,531,597	-5.4%	337,696	-78.0%			
Jun	1,605,234	1,524,311	-5.0%	1,359,966	-10.8%	608,758	-55.2%			
Jul	1,500,243	1,527,380	1.8%	1,419,158	-7.1%	632,964	-55.4%			
Aug	1,693,524	1,632,471	-3.6%	1,463,646	-10.3%	641,275	-56.2%			
Sep	1,234,135	1,530,088	24.0%	1,427,726	-6.7%	654,244	-54.2%			
Total	19,984,735	19,150,308	-4.2%	18,494,501	-3.4%	11,862,059	-35.9%			

METROMOVER TOTAL MONTHLY RIDERSHIP COMPARISONS BY FISCAL YEAR

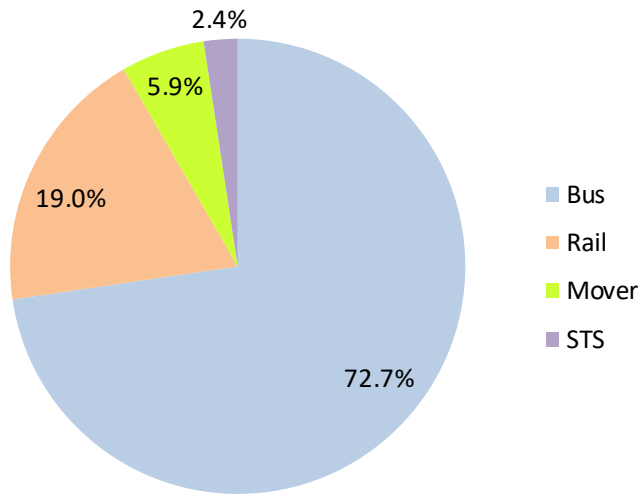
Mover	FY 17	FY 18	Variance 17 to 18	FY 19	Variance 18 to 19	FY 20	Variance 19 to 20	FY 21	Variance 20 to 21	Variance 17 to 21
Oct	814,781	751,323	-7.8%	790,533	5.2%	831,234	5.1%	250,044	-69.9%	-69.3%
Nov	841,679	729,519	-13.3%	735,198	0.8%	799,632	8.8%	232,422	-70.9%	-72.4%
Dec	858,961	748,797	-12.8%	767,239	2.5%	849,832	10.8%	251,019	-70.5%	-70.8%
Jan	852,788	772,122	-9.5%	746,728	-3.3%	847,773	13.5%			
Feb	780,514	698,107	-10.6%	675,160	-3.3%	855,398	26.7%			
Mar	949,045	859,143	-9.5%	737,814	-14.1%	441,200	-40.2%			
Apr	802,778	740,036	-7.8%	795,696	7.5%	130,549	-83.6%			
May	814,791	694,106	-14.8%	734,645	5.8%	146,454	-80.1%			
Jun	737,042	641,675	-12.9%	701,318	9.3%	203,637	-71.0%			
Jul	796,649	700,462	-12.1%	739,814	5.6%	210,596	-71.5%			
Aug	788,734	768,728	-2.5%	739,785	-3.8%	205,995	-72.2%			
Sep	425,641	698,505	64.1%	699,879	0.2%	219,696	-68.6%			
Total	9,463,403	8,802,523	-7.0%	8,863,809	0.7%	5,741,996	-35.2%			

SPECIAL TRANSPORTATION SERVICES (STS) TOTAL MONTHLY RIDERSHIP COMPARISONS BY FISCAL YEAR

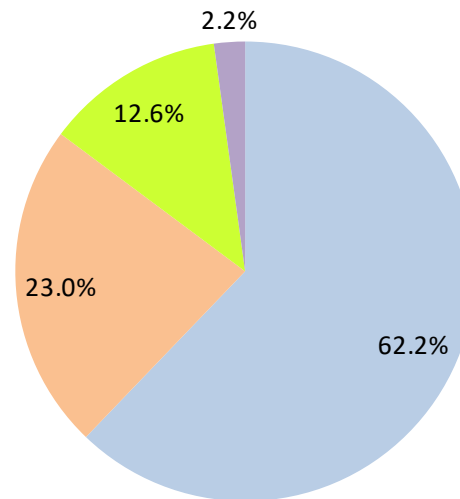
STS	FY 17	FY 18	Variance 17 to 18	FY 19	Variance 18 to 19	FY 20	Variance 19 to 20	FY 21	Variance 20 to 21	Variance 17 to 21
Oct	132,211	153,409	16.0%	162,564	6.0%	162,704	0.1%	97,388	-40.1%	-26.3%
Nov	137,030	143,375	4.6%	145,653	1.6%	144,366	-0.9%	89,387	-38.1%	-34.8%
Dec	133,439	136,955	2.6%	136,110	-0.6%	138,642	1.9%	96,366	-30.5%	-27.8%
Jan	134,273	140,042	4.3%	146,268	4.4%	149,114	1.9%			
Feb	134,089	139,032	3.7%	141,396	1.7%	144,392	2.1%			
Mar	153,790	150,384	-2.2%	153,191	1.9%	89,634	-41.5%			
Apr	137,217	148,879	8.5%	155,808	4.7%	26,877	-82.7%			
May	151,138	152,164	0.7%	158,665	4.3%	39,654	-75.0%			
Jun	140,623	143,653	2.2%	141,320	-1.6%	59,093	-58.2%			
Jul	133,656	141,020	5.5%	148,232	5.1%	61,765	-58.3%			
Aug	145,760	151,750	4.1%	147,331	-2.9%	66,563	-54.8%			
Sep	100,010	142,360	42.3%	141,387	-0.7%	80,346	-43.2%			
Total	1,633,236	1,743,023	6.7%	1,777,925	2.0%	1,163,150	-34.6%			

AVERAGE WEEKDAY RIDERSHIP - MODAL SPLITS

December 2020



December 2019



Metrobus



METROBUS MONTHLY AND AVERAGE DAILY BOARDINGS BY ROUTE

Route	Average Weekday	Average Weekday	Percent Change	Average Saturday	Average Saturday	Percent Change	Average Sunday	Average Sunday	Percent Change	Total Monthly	Total Monthly	Percent Change
	Dec-20	Dec-19	20 vs 19	Dec-20	Dec-19	20 vs 19	Dec-20	Dec-19	20 vs 19	Dec-20	Dec-19	20 vs 19
1 (*)	176	304	-42.3%	176	314	-44.0%	138	272	-49.1%	5,256	9,269	-43.3%
2	1,873	2,312	-19.0%	1,040	1,527	-31.9%	575	1,003	-42.7%	48,249	60,687	-20.5%
3	3,713	4,834	-23.2%	3,367	5,322	-36.7%	2,869	4,202	-31.7%	109,507	148,005	-26.0%
7	1,937	2,974	-34.9%	1,388	1,993	-30.4%	1,069	1,410	-24.2%	53,506	78,875	-32.2%
8	3,303	3,455	-4.4%	2,033	2,047	-0.7%	1,451	1,591	-8.8%	88,041	90,285	-2.5%
9	4,723	5,192	-9.0%	2,901	3,184	-8.9%	1,856	2,442	-24.0%	124,795	136,412	-8.5%
10	1,302	2,077	-37.3%	1,473	1,779	-17.2%	982	1,276	-23.1%	39,436	58,385	-32.5%
11	5,409	6,558	-17.5%	4,099	5,418	-24.3%	2,733	3,628	-24.7%	149,050	181,157	-17.7%
12	2,034	2,471	-17.7%							44,743	51,889	-13.8%
16	1,186	1,770	-33.0%	1,256	1,558	-19.4%	609	886	-31.2%	34,153	48,703	-29.9%
17	2,383	3,542	-32.7%	1,599	2,463	-35.1%	1,028	1,553	-33.8%	63,968	93,560	-31.6%
19	988	1,312	-24.7%							21,734	27,562	-21.1%
21	1,526	1,775	-14.0%							33,577	37,269	-9.9%
22	2,355	3,425	-31.2%	1,658	2,144	-22.7%	987	1,478	-33.2%	63,382	89,365	-29.1%
24 - Coral Way Limited	1,327	1,650	-19.6%	1,023	1,220	-16.2%	763	935	-18.5%	37,100	45,137	-17.8%
27	4,924	6,376	-22.8%	3,487	4,358	-20.0%	2,421	2,774	-12.7%	134,381	167,976	-20.0%
29 (*)	345	652	-47.2%							7,579	13,699	-44.7%
31 - BUSWAY LOCAL	541	1,040	-48.0%	833	832	0.1%	398	604	-34.1%	17,211	28,793	-40.2%
32	1,744	2,166	-19.5%	1,028	1,103	-6.8%	465	738	-37.0%	44,812	54,336	-17.5%
33	1,020	1,604	-36.4%	663	1,050	-36.9%	493	609	-19.0%	27,565	41,532	-33.6%
34 EXPRESS (*)	794	1,774	-55.2%							17,473	37,257	-53.1%
35 (*)	1,627	2,335	-30.3%	1,043	1,227	-15.0%	833	955	-12.8%	44,127	59,666	-26.0%
36	1,966	2,408	-18.4%	1,395	1,399	-0.3%	1,068	1,012	5.6%	54,163	62,236	-13.0%
37	2,385	3,085	-22.7%	1,519	2,255	-32.7%	1,356	1,603	-15.4%	65,333	83,425	-21.7%
38	4,200	6,285	-33.2%	2,905	5,108	-43.1%	2,854	3,808	-25.0%	118,293	175,265	-32.5%
39 EXPRESS (*)	194	795	-75.6%							4,263	16,697	-74.5%

METROBUS MONTHLY AND AVERAGE DAILY BOARDINGS BY ROUTE

Route	Average Weekday	Average Weekday	Percent Change	Average Saturday	Average Saturday	Percent Change	Average Sunday	Average Sunday	Percent Change	Total Monthly	Total Monthly	Percent Change
	Dec-20	Dec-19	20 vs 19	Dec-20	Dec-19	20 vs 19	Dec-20	Dec-19	20 vs 19	Dec-20	Dec-19	20 vs 19
40	989	1,558	-36.5%	479	664	-27.8%	318	416	-23.6%	25,257	37,872	-33.3%
42	519	805	-35.5%	542	572	-5.2%	308	355	-13.1%	15,133	21,322	-29.0%
46 - LIBERTY CITY CONN. (*)	20	51	-61.7%							430	1,072	-59.9%
51 - FLAGLER MAX	1,915	2,938	-34.8%							42,139	61,689	-31.7%
52	801	1,131	-29.2%	575	736	-21.9%	315	457	-30.9%	21,501	29,443	-27.0%
54	2,195	2,828	-22.4%	1,676	1,805	-7.1%	1,137	1,226	-7.2%	60,689	73,969	-18.0%
56 (*)	159	374	-57.6%							3,491	7,854	-55.6%
57 (*)	241	382	-37.0%							5,295	8,025	-34.0%
62	1,600	1,792	-10.7%	1,391	1,341	3.7%	769	877	-12.3%	44,607	48,248	-7.5%
71 (*)	369	628	-41.2%	207	292	-28.9%	149	159	-6.5%	9,696	15,302	-36.6%
72 (*)	371	703	-47.3%	201	378	-46.7%	162	252	-35.8%	9,766	17,779	-45.1%
73	1,255	1,837	-31.7%	737	922	-20.0%	343	444	-22.7%	32,265	44,936	-28.2%
75	835	1,426	-41.4%	484	471	2.9%	263	254	3.6%	21,622	33,345	-35.2%
77	5,655	7,066	-20.0%	2,773	4,118	-32.7%	2,003	2,773	-27.7%	145,522	181,483	-19.8%
82 - WESTCHESTER CIRC. (*)	24	66	-63.5%	30	52	-41.5%				647	1,584	-59.2%
87	982	1,395	-29.6%	451	519	-13.2%	262	285	-8.1%	24,724	33,077	-25.3%
88	1,441	2,023	-28.7%	1,114	1,815	-38.7%	816	1,209	-32.5%	40,241	56,990	-29.4%
93 - BISCAYNE MAX	1,354	3,171	-57.3%							29,777	66,587	-55.3%
95 EXPRESS (*)	361	1,625	-77.8%							7,937	34,115	-76.7%
99	947	1,367	-30.8%	668	906	-26.2%	521	653	-20.2%	26,102	36,249	-28.0%
101 - A (*)	100	171	-41.4%	59	72	-18.7%	35	41	-16.3%	2,614	4,130	-36.7%
102 - B	111	1,581	-93.0%	116	890	-86.9%	155	672	-76.9%	3,673	40,802	-91.0%
103 - C	307	442	-30.5%	274	286	-3.9%	182	173	5.3%	8,768	11,465	-23.5%
104	300	800	-62.4%	78	508	-84.7%	102	283	-64.0%	7,428	20,522	-63.8%
105 - E	889	1,216	-26.9%	561	689	-18.6%	582	570	2.2%	24,704	31,710	-22.1%

METROBUS MONTHLY AND AVERAGE DAILY BOARDINGS BY ROUTE

Route	Average Weekday	Average Weekday	Percent Change	Average Saturday	Average Saturday	Percent Change	Average Sunday	Average Sunday	Percent Change	Total Monthly	Total Monthly	Percent Change
	Dec-20	Dec-19	20 vs 19	Dec-20	Dec-19	20 vs 19	Dec-20	Dec-19	20 vs 19	Dec-20	Dec-19	20 vs 19
107 - G	890	1,599	-44.4%	878	1,097	-20.0%	552	810	-31.8%	25,842	42,820	-39.6%
108 - H	346	456	-24.1%	372	409	-9.2%	292	331	-11.9%	10,548	13,190	-20.0%
110 - J	1,664	2,563	-35.1%	1,715	1,954	-12.2%	1,203	1,419	-15.2%	49,488	70,157	-29.5%
112 - L	7,143	7,458	-4.2%	5,309	6,287	-15.5%	3,782	4,519	-16.3%	197,297	208,875	-5.5%
113 - M	500	787	-36.4%	390	462	-15.6%	269	418	-35.6%	13,902	20,871	-33.4%
115 (*)	190	165	15.1%	198	79	152.5%	162	85	91.0%	5,781	4,288	34.8%
119 - S	7,617	8,640	-11.8%	5,835	7,379	-20.9%	5,606	7,293	-23.1%	218,936	254,718	-14.0%
120 - BEACH MAX	4,465	6,551	-31.8%	3,627	5,341	-32.1%	2,254	3,400	-33.7%	123,996	179,335	-30.9%
132 TRI-RAIL (DORAL)	30	3	907.6%							665	63	955.6%
135 (*)	727	1,280	-43.2%	306	497	-38.5%	234	349	-33.0%	18,383	30,954	-40.6%
136	40	118	-66.1%							882	2,481	-64.4%
137 - WEST DADE CONN.	958	1,496	-36.0%	797	1,140	-30.1%	560	779	-28.2%	27,055	40,658	-33.5%
150 - MIAMI BEACH AIRPORT FLYER (*)	1,026	1,667	-38.4%	912	1,572	-42.0%	996	1,463	-31.9%	31,198	50,065	-37.7%
155 - BISCAYNE GARDENS CIRCULATOR (*)	32	48	-34.0%							700	1,012	-30.8%
183	2,318	3,000	-22.7%	1,436	1,908	-24.7%	1,113	1,258	-11.5%	62,305	78,182	-20.3%
200 - CUTLER BAY LOCAL	117	150	-21.7%	83	125	-34.1%	45	48	-5.4%	3,134	3,932	-20.3%
202 - LITTLE HAITI CONN. (*)	122	134	-8.6%	117	68	72.6%	98	54	80.4%	3,644	3,402	7.1%
207 (7st) - LITTLE HAVANA CIRC	722	1,532	-52.9%	946	1,013	-6.5%	545	699	-22.0%	22,399	40,422	-44.6%
208 (8st) - LITTLE HAVANA CIRC	816	1,448	-43.6%	911	1,157	-21.3%	667	908	-26.5%	24,933	40,483	-38.4%
210 - SKYLAKE CIRC (*)	284	221	28.4%	159	184	-13.5%	120	155	-22.3%	7,481	6,305	18.7%
211 - OVERTOWN CIRC. (*)	47	72	-34.3%							1,035	1,503	-31.1%
212 - SWEETWATER CIRC. (*)	16	56	-71.4%							352	1,174	-70.0%
217 - BUNCHE PARK CIRC (*)	57	69	-17.4%							1,260	1,456	-13.5%
238 EAST/WEST CONN.	302	448	-32.6%							6,651	9,415	-29.4%

METROBUS MONTHLY AND AVERAGE DAILY BOARDINGS BY ROUTE

Route	Average Weekday	Average Weekday	Percent Change	Average Saturday	Average Saturday	Percent Change	Average Sunday	Average Sunday	Percent Change	Total Monthly	Total Monthly	Percent Change
	Dec-20	Dec-19	20 vs 19	Dec-20	Dec-19	20 vs 19	Dec-20	Dec-19	20 vs 19	Dec-20	Dec-19	20 vs 19
246 - NIGHT OWL	68	101	-32.5%	43	95	-54.5%	61	107	-42.5%	1,983	3,145	-36.9%
248 - PRINCETON CIRCULATOR (*)	66	37	79.8%							1,447	768	88.4%
252 - CORAL REEF MAX	404	771	-47.6%	216	322	-33.1%	159	229	-30.8%	10,549	18,865	-44.1%
254 - BROWNSVILLE CIRC. (*)	13	19	-32.0%							280	393	-28.8%
267 - LUDLAM LIMITED (*)	93	126	-26.4%							2,048	2,656	-22.9%
272 SUNSET KAT (*)	209	517	-59.5%							4,604	10,849	-57.6%
277 - 7th AVENUE MAX	438	584	-25.0%							9,627	12,260	-21.5%
286 - NORTH POINTE CIRC. (*)	35	94	-62.7%	32	66	-51.7%				894	2,228	-59.9%
287 - SAGA BAY MAX	108	312	-65.3%							2,384	6,552	-63.6%
297-27th AVENUE ORANGE MAX	717	1,271	-43.6%					191		15,764	26,892	-41.4%
301 DADE-MONROE EXPRESS(*)	847	824	2.8%	909	866	4.9%	827	753	9.8%	26,398	25,280	4.4%
302 CARD SOUND EXPRESS(*)	78	77	0.9%	55	64	-13.0%	56	70	-20.4%	2,209	2,290	-3.5%
338 - WEEKEND EXPRESS				105	231	-54.4%	92	219	-57.8%	882	2,236	-60.6%
344 (*)	66	102	-34.8%							1,458	2,135	-31.7%
500	42	42	0.2%	57	44	30.1%	46	39	18.5%	1,376	1,283	7.2%
12/21 WEEKEND INTERL.				2,147	2,653	-19.1%	1,618	1,955	-17.2%	16,676	22,341	-25.4%
GREEN HILLS SHUTTLE (*)	6	8	-27.6%							22	38	-42.1%
KINGS CREEK SHUTTLE (*)	10	19	-46.3%							51	76	-32.9%
SIERRALAKES SHUTTLE (*)	17	26	-34.0%							52	105	-50.5%
ROBERT SHARP SHUTTLE (*)	19	6	196.8%							94	19	394.7%
AHEPA SHUTTLE (*)	18	18	2.9%							90	70	28.6%
FEDERATION GARDENSSHUTTLE (*)				13	26	-51.0%				50	102	-51.0%
Total (†)	111,394	157,487	-29.3%	74,861	98,366	-23.9%	54,728	71,426	-23.4%	3,022,530	4,126,990	-26.8%

(1) Includes shuttles and those routes which were not run both years.

(2) Nearly every bus route experienced year-over-year losses as a result of the SARS-CoV-2 pandemic; rides were fare-free beginning March 22, 2020.

(*) The following routes are entirely operated under contract: 1, 29, 34, 35, 39, 46, 56, 57, 71, 72, 82, 95, 101-A, 115, 135, 150, 155, 202, 210, 211, 212, 217, 248, 254, 267, 272, 286, 301, 302 and 344, although some supplemental runs may be performed by DTPW. Conversely, a few routes that are nominally run by DTPW may have a few supplemental runs operated by contractors; Dade-Monroe routes 301 and 302 as well as six Lifeline routes are also under contracted operation.

(†) Not shown are several express routes were suspended at the end of March or the beginning of April 2020, due to the SARS-CoV-2 pandemic, while other routes had alignment and schedule modifications made to them, in an ongoing effort to optimize service delivery; the September 2019 totals include those routes.

METROBUS HOLIDAY BOARDINGS BY ROUTE

Christmas Day

ROUTES	Christmas Day 2019	Christmas Day 2020	Pct Delta	ROUTES	Christmas Day 2019	Christmas Day 2020	Pct Delta
1 (*)	109	63	-42.2%	88	501	287	-42.7%
2	864	679	-21.4%	99	346	314	-9.2%
3	2,584	2,117	-18.1%	101 (*)	36	24	-33.3%
7	699	491	-29.8%	102	458	124	-72.9%
8	881	807	-8.4%	103	149	132	-11.4%
9	1,632	1,503	-7.9%	104	124	50	-59.7%
10	915	471	-48.5%	105	377	297	-21.2%
11	2,332	1,503	-35.5%	107	605	452	-25.3%
12	658	405	-38.4%	108	202	163	-19.3%
16	594	614	3.4%	110	1,084	661	-39.0%
17	1,191	709	-40.5%	112	3,465	2,657	-23.3%
21	777	495	-36.3%	113	300	247	-17.7%
22	1,145	838	-26.8%	115 (*)	88	103	17.0%
24	413	401	-2.9%	119	5,867	4,401	-25.0%
27	1,960	1,782	-9.1%	120	2,808	2,138	-23.9%
31	330	241	-27.0%	135 (*)	237	157	-33.8%
32	492	387	-21.3%	137	316	242	-23.4%
33	336	205	-39.0%	150 (*)	1,522	962	-36.8%
35 (*)	690	649	-5.9%	183	815	676	-17.1%
36	511	859	68.1%	200	18	25	38.9%
37	860	853	-0.8%	202 (*)	47	58	23.4%
38	1,980	1,717	-13.3%	207	378	304	-19.6%
40	230	150	-34.8%	208	459	565	23.1%
42	214	200	-6.5%	210 (*)	76	59	-22.4%
52	268	148	-44.8%	246 (*)	76	30	-60.5%
54	815	623	-23.6%	252	110	117	6.4%
62	651	589	-9.5%	301 (*)	461	616	33.6%
71 (*)	102	60	-41.2%	302 (*)	60	70	16.7%
72 (*)	151	66	-56.3%	338	19	10	-47.4%
73	235	152	-35.3%	500	39	48	23.1%
75	140	176	25.7%				
77	2,286	2,146	-6.1%				
87	133	95	-28.6%				
				Total (1)	48,221	38,183	-20.8%

(*) Routes currently under contracted operation

(1) Excludes lifeline shuttles; some routes were not run both years on Christmas Day

BUS RIDERSHIP BY ROUTE SERVICE TYPE

Boardings by Service Type and Route	Average Weekday Dec-20	Average Weekday Dec-19	Percent Change 20 vs 19	Average Saturday Dec-20	Average Saturday Dec-19	Percent Change 20 vs 19	Average Sunday Dec-20	Average Sunday Dec-19	Percent Change 20 vs 19	Total Monthly Dec-20	Total Monthly Dec-19	Percent Change 20 vs 19
Express Routes												
34 EXPRESS (*)	794	1,774	-55.2%							17,473	37,257	-53.1%
39 EXPRESS (*)	194	795	-75.6%							4,263	16,697	-74.5%
95-EXPRESS (*)	361	1,625	-77.8%							7,937	34,115	-76.7%
150-MIAMI BEACH AIRPORT FLYER (*)	1,026	1,667	-38.4%	912	1,572	-42.0%	996	1,463	-31.9%	31,198	50,065	-37.7%
175 - NW MIAMI-DADE EXPRESS		16									329	
195 EXPRESS - BROWARD BLVD		327									6,870	
196 EXPRESS - SHERIDAN ST		333									6,998	
295 EXPRESS - BROWARD BLVD - CIVIC CENTER		217									4,547	
296 EXPRESS - SHERIDAN ST - CIVIC CENTER		196									4,113	
204 KAT-KILLIAN		844									17,725	
288 KENDALL CRUISER		709									14,897	
338 - WEEKEND EXPRESS				105	231	-54.4%	92	219	-57.8%	882	2,236	-60.6%
836 EXPRESS												
Subtotal Express Routes	2,375	8,502	-72.1%	1,017	1,803	-43.6%	1,088	1,682	-35.3%	61,753	195,849	-68.5%
Percentage of All Bus Routes	2.1%	5.4%		1.4%	1.8%		2.0%	2.4%		2.0%	4.7%	
Contracted Regular & Circulator Routes												
1	176	304	-42.3%	176	314	-44.0%	138	272	-49.1%	5,256	9,269	-43.3%
29	345	652	-47.2%							7,579	13,699	-44.7%
35	1,627	2,335	-30.3%	1,043	1,227	-15.0%	833	955	-12.8%	44,127	59,666	-26.0%
46 - LIBERTY CITY CONN.	20	51	-61.7%							430	1,072	-59.9%
56	159	374	-57.6%							3,491	7,854	-55.6%
57	241	382	-37.0%							5,295	8,025	-34.0%
71	369	628	-41.2%	207	292	-28.9%	149	159	-6.5%	9,696	15,302	-36.6%
72	371	703	-47.3%	201	378	-46.7%	162	252	-35.8%	9,766	17,779	-45.1%
82 - WESTCHESTER CIRC	24	66	-63.5%	30	52					647	1,584	-59.2%
101 - A	100	171	-41.4%	59	72	-18.7%	35	41	-16.3%	2,614	4,130	-36.7%
115	190	165	15.1%	198	79	152.5%	162	85	91.0%	5,781	4,288	34.8%
135	727	1,280	-43.2%	306	497		234	349		18,383	30,954	-40.6%
155 - BISCAYNE GARDENS CIRC	32	48	-34.0%							700	1,012	-30.8%
202 - LITTLE HAITI CONN.	122	134	-8.6%	117	68	72.6%	98	54	80.4%	3,644	3,402	7.1%
210 - SKYLAKE CIRC	284	221	28.4%	159	184	-13.5%	120	155	-22.3%	7,481	6,305	18.7%
211-OVERTOWN CIRC	47	72	-34.3%							1,035	1,503	-31.1%
212-SWEETWATER CIRC	16	56	-71.4%							352	1,174	-70.0%
217 - BUNCHE PARK CIRC	57	69	-17.4%							1,260	1,456	-13.5%
248 - PRINCETON CIRCULATOR	66	37	79.8%							1,447	768	88.4%
254-BROWNSVILLE CIRC	13	19	-32.0%							280	393	-28.8%
267-LUDLAM LIMITED	93	126	-26.4%							2,048	2,656	-22.9%
272 KAT-SUNSET	209	517	-59.5%							4,604	10,849	-57.6%
286-NORTH POINTE CIRC	35	94	-62.7%	32	66	-51.7%				894	2,228	-59.9%
344	66	102	-34.8%							1,458	2,135	-31.7%
Subtotal Contracted Reg. & Circ. Routes	5,387	8,603	-37.4%	2,527	3,226	-21.7%	1,930	2,322	-16.9%	138,268	207,503	-33.4%
Percentage of All Bus Routes	4.8%	5.5%		3.4%	3.3%		3.5%	3.3%		4.6%	5.0%	

BUS RIDERSHIP BY ROUTE SERVICE TYPE

Boardings by Service Type and Route	Average Weekday	Average Weekday	Percent Change	Average Saturday	Average Saturday	Percent Change	Average Sunday	Average Sunday	Percent Change	Total Monthly	Total Monthly	Percent Change
	Dec-20	Dec-19	20 vs 19	Dec-20	Dec-19	20 vs 19	Dec-20	Dec-19	20 vs 19	Dec-20	Dec-19	20 vs 19
Contracted Express Routes												
301-DADE MONROE EXPRESS	847	824	2.8%	909	866	4.9%	827	753	9.8%	26,398	25,280	4.4%
302-CARD SOUND EXPRESS	78	77	0.9%	55	64	-13.0%	56	70	-20.4%	2,209	2,290	-3.5%
Subtotal Contracted Express Routes	925	901	2.6%	964	930	3.7%	882	823	7.2%	28,607	27,570	3.8%
Percentage of All Bus Routes	0.8%	0.6%		1.3%	0.9%		1.6%	1.2%		0.9%	0.7%	
Limited Stop Routes												
51-FLAGLER MAX	1,915	2,938	-34.8%							42,139	61,689	-31.7%
93 - BISCAYNE MAX	1,354	3,171	-57.3%							29,777	66,587	-55.3%
120 - BEACH MAX	4,465	6,551	-31.8%	3,627	5,341	-32.1%	2,254	3,400	-33.7%	123,996	179,335	-30.9%
252-CORAL REEF MAX	404	771	-47.6%	216	322	-33.1%	159	229	-30.8%	10,549	18,865	-44.1%
277-7TH AVENUE MAX	438	584	-25.0%							9,627	12,260	-21.5%
287-SAGA BAY MAX	108	312	-65.3%							2,384	6,552	-63.6%
297-27th AVENUE ORANGE MAX	717	1,271	-43.6%					191		15,764	26,892	-41.4%
Subtotal Limited Stop (MAX) Routes	9,400	15,598	-39.7%	3,842	5,664	-32.2%	2,412	3,820	-36.9%	234,236	372,180	-37.1%
Percentage of All Bus Routes	8.4%	9.9%		5.1%	5.8%		4.4%	5.3%		7.7%	9.0%	
Free Route												
132 -TRI-RAIL DORAL	30	3	907.6%							665	63	955.6%
Percentage of All Bus Routes	0.0%	0.0%								0.0%	0.0%	
Shuttles												
55-MARLINS SHUTTLE												
Percentage of All Bus Routes												
Contractor-Operated Lifeline Routes												
GREEN HILLS SHUTTLE	6	8	-27.6%							22	38	-42.1%
KINGS CREEK SHUTTLE	10	19	-46.3%							51	76	-32.9%
SIERRA LAKES SHUTTLE	17	26	-34.0%							52	105	-50.5%
ROBERT SHARP SHUTTLE	19	6	196.8%							94	19	394.7%
AHEPA SHUTTLE	18	18	2.9%							90	70	28.6%
FEDERATION GARDENS SHUTTLE				13	26	-51.0%				50	102	-51.0%
Subtotal Contractor-Operated Lifeline Routes	70	77	-8.9%	13	26	-51.0%				359	410	-12.4%
Percentage of All Bus Routes	0.1%	0.0%		0.0%	0.0%		0.0%	0.0%		0.0%	0.0%	
Other Circulator Route												
200-CUTLER BAY LOCAL	117	150	-21.7%	83	125	-34.1%	45	48		3,134	3,932	-20.3%
Percentage of All Bus Routes	0.1%	0.1%		0.1%	0.1%		0.1%	0.1%		0.1%	0.1%	
All Other (Regular) Routes	93,091	123,654	-24.7%	66,415	86,592	-23.3%	48,370	62,731	-22.9%	2,555,508	3,319,483	-23.0%
Percentage of All Bus Routes	83.6%	78.5%		88.7%	88.0%		88.4%	87.8%		84.5%	80.4%	
Total Bus System (1)	111,394	157,487	-29.3%	74,861	98,366	-23.9%	54,728	71,426	-23.4%	3,022,530	4,126,990	-26.8%

(1) Includes shuttles and routes which were not run both years.

(2) Nearly every bus route experienced year-over-year losses as a result of the SARS-CoV-2 pandemic; rides were fare-free beginning March 22, 2020.

(*) The following routes are entirely operated under contract: 1, 29, 34, 35, 39, 46, 56, 57, 71, 72, 82, 95, 101-A, 115, 135, 150, 155, 202, 210, 211, 212, 217, 248, 254, 267, 272, 286, 301, 302 and 344, although some supplemental runs may be performed by DTPW. Conversely, a few routes that are nominally run by DTPW may have a few supplemental runs operated by contractors; Dade-Monroe routes 301 and 302 as well as six Lifeline routes are also under contracted operation.

Several express routes were suspended at the end of March or the beginning of April 2020, due to the SARS-CoV-2 pandemic, while other routes had alignment and schedule modifications made to them, in an ongoing effort to optimize service delivery.

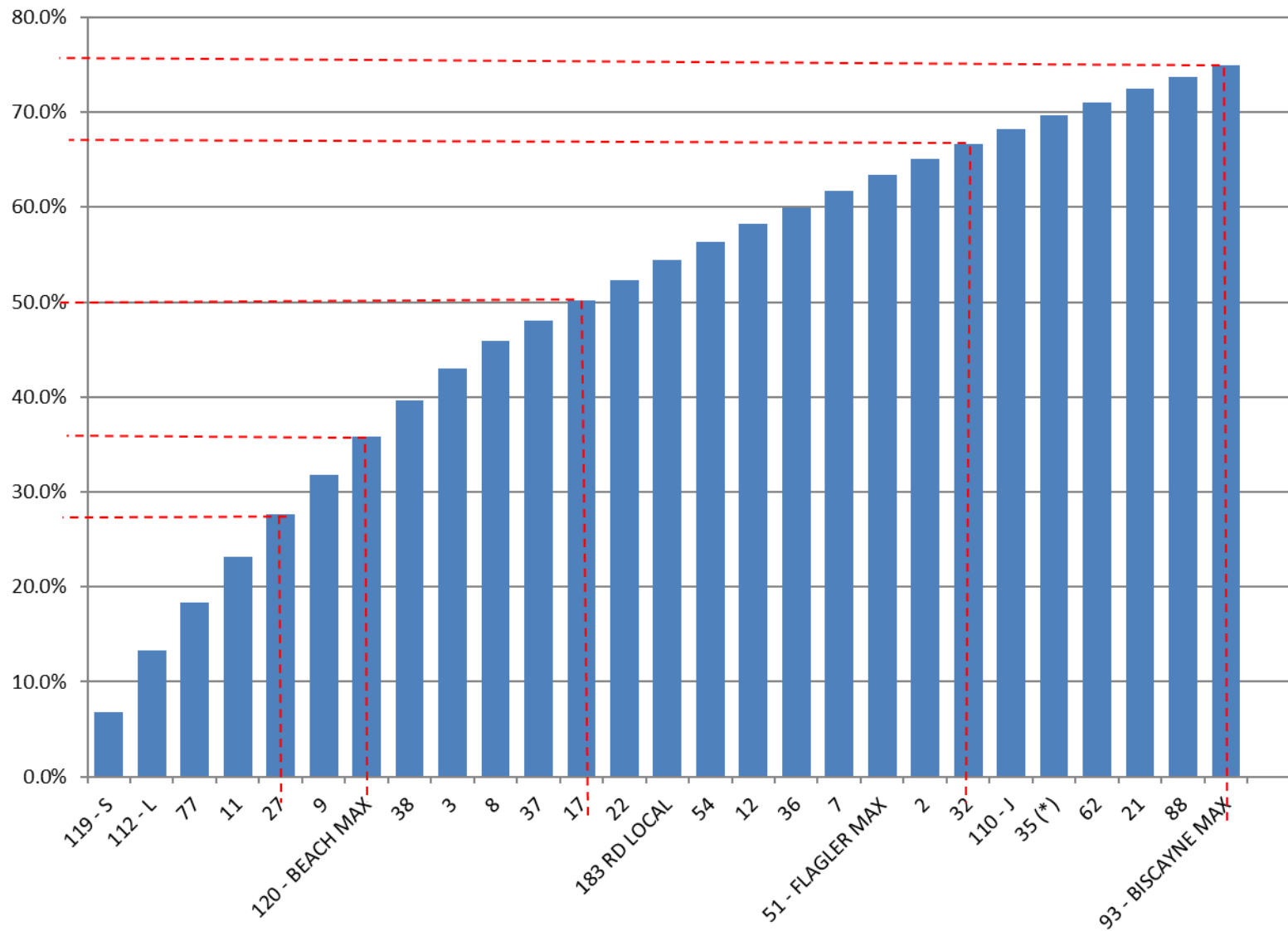
Bus Routes as Ranked by Percentage of Average Weekday Ridership

Rank	Route	Average Weekday	Percent Share	Cumul Pct Share	Rank	Route	Average Weekday	Percent Share	Cumul Pct Share	Rank	Route	Average Weekday	Percent Share	Cumul Pct Share
1	119	7,617	6.8%	6.8%	36	87	982	0.9%	84.0%	71	102	111	0.1%	99.1%
2	112	7,143	6.4%	13.2%	37	137	958	0.9%	84.8%	72	287	108	0.1%	99.2%
3	77	5,655	5.1%	18.3%	38	99	947	0.8%	85.7%	73	101	100	0.1%	99.3%
4	11	5,409	4.9%	23.2%	39	107	890	0.8%	86.5%	74	267	93	0.1%	99.4%
5	27	4,924	4.4%	27.6%	40	105	889	0.8%	87.3%	75	302	78	0.1%	99.4%
6	9	4,723	4.2%	31.8%	41	301	847	0.8%	88.0%	76	246	68	0.1%	99.5%
7	120	4,465	4.0%	35.9%	42	75	835	0.7%	88.8%	77	344	66	0.1%	99.6%
8	38	4,200	3.8%	39.6%	43	208	816	0.7%	89.5%	78	248	66	0.1%	99.6%
9	3	3,713	3.3%	43.0%	44	52	801	0.7%	90.2%	79	217	57	0.1%	99.7%
10	8	3,303	3.0%	45.9%	45	34	794	0.7%	91.0%	80	211	47	0.0%	99.7%
11	37	2,385	2.1%	48.1%	46	135	727	0.7%	91.6%	81	500	42	0.0%	99.7%
12	17	2,383	2.1%	50.2%	47	207	722	0.6%	92.3%	82	136	40	0.0%	99.8%
13	22	2,355	2.1%	52.3%	48	297	717	0.6%	92.9%	83	286	35	0.0%	99.8%
14	183	2,318	2.1%	54.4%	49	31	541	0.5%	93.4%	84	155	32	0.0%	99.8%
15	54	2,195	2.0%	56.4%	50	42	519	0.5%	93.9%	85	132	30	0.0%	99.9%
16	12	2,034	1.8%	58.2%	51	113	500	0.4%	94.3%	86	82	24	0.0%	99.9%
17	36	1,966	1.8%	60.0%	52	277	438	0.4%	94.7%	87	46	20	0.0%	99.9%
18	7	1,937	1.7%	61.7%	53	252	404	0.4%	95.1%	88	RS	19	0.0%	99.9%
19	51	1,915	1.7%	63.4%	54	72	371	0.3%	95.4%	89	AS	18	0.0%	99.9%
20	2	1,873	1.7%	65.1%	55	71	369	0.3%	95.7%	90	SL	17	0.0%	100.0%
21	32	1,744	1.6%	66.7%	56	95	361	0.3%	96.0%	91	212	16	0.0%	100.0%
22	110	1,664	1.5%	68.2%	57	108	346	0.3%	96.4%	92	254	13	0.0%	100.0%
23	35	1,627	1.5%	69.6%	58	29	345	0.3%	96.7%	93	KC	10	0.0%	100.0%
24	62	1,600	1.4%	71.1%	59	103	307	0.3%	96.9%	94	GH	6	0.0%	100.0%
25	21	1,526	1.4%	72.4%	60	238	302	0.3%	97.2%					
26	88	1,441	1.3%	73.7%	61	104	300	0.3%	97.5%					
27	93	1,354	1.2%	74.9%	62	210	284	0.3%	97.7%					
28	24	1,327	1.2%	76.1%	63	57	241	0.2%	98.0%					
29	10	1,302	1.2%	77.3%	64	272	209	0.2%	98.1%					
30	73	1,255	1.1%	78.4%	65	39	194	0.2%	98.3%					
31	16	1,186	1.1%	79.5%	66	115	190	0.2%	98.5%					
32	150	1,026	0.9%	80.4%	67	1	176	0.2%	98.6%					
33	33	1,020	0.9%	81.3%	68	56	159	0.1%	98.8%					
34	40	989	0.9%	82.2%	69	202	122	0.1%	98.9%					
35	19	988	0.9%	83.1%	70	200	117	0.1%	99.0%					
										Total Boardings				111,394
														100.0%
														contracted

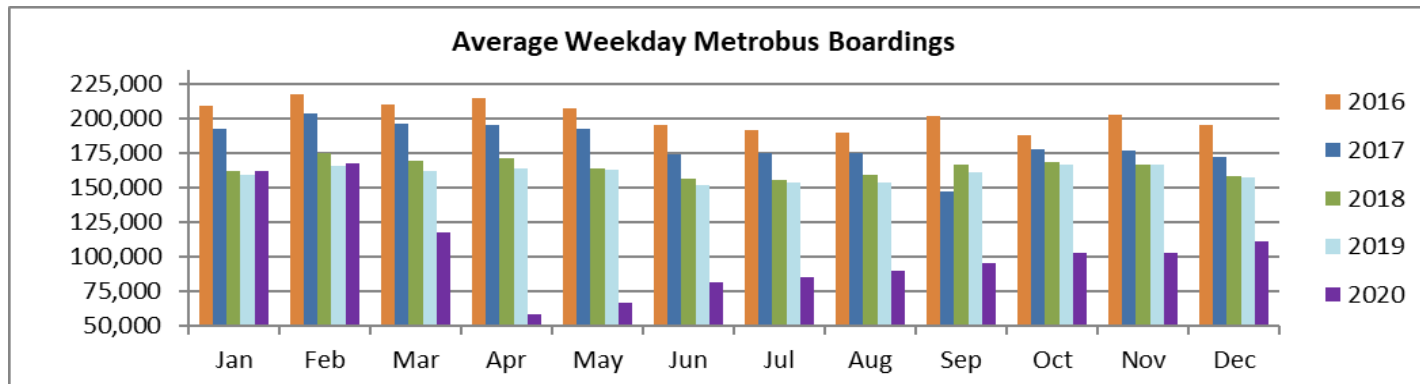
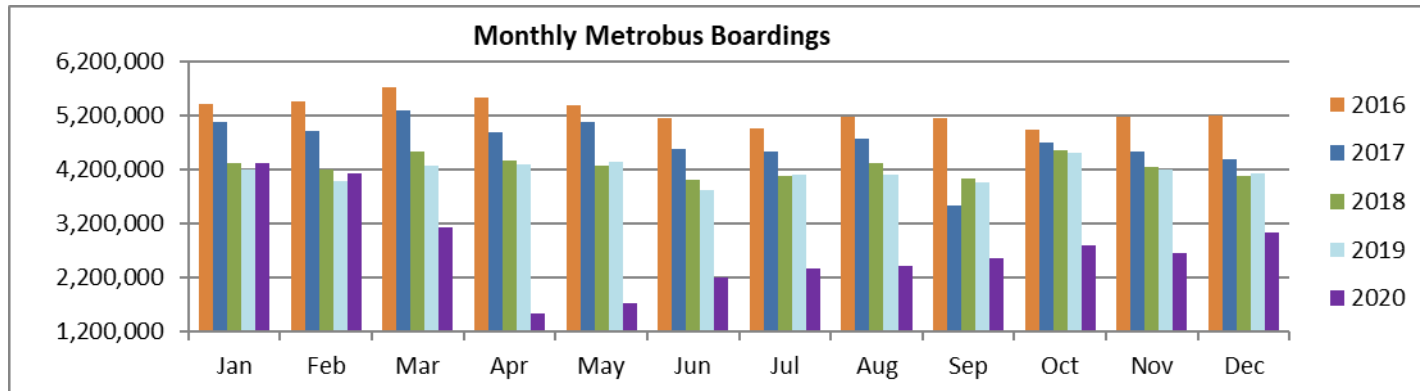
(1) Average weekday ridership rounded to the nearest unit.

(2) Includes the five Lifeline Shuttles that operate on weekdays: Ahepa, Green Hills, Kings Creek, Robert Sharp and Sierra Lakes.

**Bus - Cumulative Percentage Average Weekday Ridership Share
Top 1/4, 1/3, 1/2, 2/3 and 3/4 of Routes**



TOTAL MONTHLY AND AVERAGE WEEKDAY RIDERSHIP YEAR OVER YEAR COMPARISON CHARTS – METROBUS



**“TOP 5 / BOTTOM 5” BUS ROUTES AVERAGE WEEKDAY RIDERSHIP PERFORMANCE
YEAR OVER YEAR COMPARISONS**

Route	Dec-20	Dec-19	Absolute Delta (1)	Percent Delta (2)
210 - SKYLAKE CIRC (*)	284	221	63	28.4%
248 - PRINCETON CIRCULATOR (*)	66	37	29	79.8%
132 TRI-RAIL (DORAL)	30	3	27	907.6%
115 (*)	190	165	25	15.1%
301 DADE-MONROE EXPRESS (*)	847	824	23	2.8%
120 - BEACH MAX	4,465	6,551	-2,086	-31.8%
38	4,200	6,285	-2,085	-33.2%
93 - BISCAYNE MAX	1,354	3,171	-1,817	-57.3%
102 - B	111	1,581	-1,471	-93.0%
27	4,924	6,376	-1,452	-22.8%

(*) Route entirely run by contractor.

(1) Averages rounded to the nearest boarding; Lifelines excluded.

(2) As a result of the SARS-CoV-2 pandemic, rides were fare-free beginning March 22, 2020.

METROBUS PARKING PATRONAGE SUMMARY

December 2020

PARK-RIDE LOT	ACTUAL AVAILABLE SPACES	ACTUAL OCCUPANCY	PERCENT OCCUPANCY
Transitway / SW 152nd St	200	40	20%
Transitway / SW 168th St	149	30	20%
Transitway / SW 200th Street (effective February 2020)	100	30	30%
Transitway / SW 112 Ave (Target)	450	46	10%
Transitway / SW 244th St	95	18	19%
Transitway / SW 296th St	139	39	28%
Transitway / SW 344th St	248	113	46%
Coral Reef Drive 117/ Turnpike	95	46	48%
Golden Glades - East Lot	535	132	25%
Golden Glades - West Lot	1,007	50	5%
Hammocks Town Center (SW 152 Ave / SW 104 St)	50	0	0%
Kendall Dr./SW 127th Ave	161	5	3%
West Kendall Transit Term (Kendall Dr / SW162 Ave)	40	1	3%
NW 7th Avenue Transit Village (NW 7 Ave / NW 62 St)	25	23	92%
Miami Gardens Dr. / NW 73rd Ave	136	14	10%
Dolphin Station (effective Mar 2020)	348	2	1%
I-75 / Miami Gardens Dr (effective June 2019)	298	0	0%
TOTAL	4,076	589	14%

Note: some park-ride lots are joint-use and the number of park-ride vehicles may exceed the number of spaces allocated.

Metrorail



December 2020

METRORAIL MONTHLY AND AVERAGE DAILY BOARDINGS BY STATION

	Average Weekday	Average Weekday	Percent Change	Average Saturday	Average Saturday	Percent Change	Average Sunday	Average Sunday	Percent Change	Total Monthly	Total Monthly	Percent Change
STATIONS	Dec-20	Dec-19	20 vs 19	Dec-20	Dec-19	20 vs 19	Dec-20	Dec-19	20 vs 19	Dec-20	Dec-19	20 vs 19
ALLAPATTAH	1,209	1,791	-32.5%	807	1,024	-21.2%	611	765	-20.2%	32,773	46,115	-28.9%
BRICKELL	3,451	5,632	-38.7%	2,188	2,713	-19.4%	1,662	2,049	-18.9%	92,403	140,626	-34.3%
BROWNSVILLE	691	797	-13.3%	631	507	24.4%	443	367	20.4%	19,891	20,907	-4.9%
CIVIC CENTER	2,259	5,119	-55.9%	626	904	-30.8%	569	715	-20.5%	54,909	115,225	-52.3%
COCONUT GROVE	919	1,564	-41.2%	603	876	-31.2%	454	683	-33.6%	24,769	40,180	-38.4%
CULMER	842	1,215	-30.7%	538	704	-23.7%	447	563	-20.6%	22,873	31,607	-27.6%
DADELAND NORTH	2,518	5,262	-52.1%	1,506	1,985	-24.1%	1,173	1,516	-22.6%	66,604	126,644	-47.4%
DADELAND SOUTH	2,790	6,361	-56.1%	1,837	2,554	-28.1%	1,286	2,050	-37.3%	75,086	155,214	-51.6%
DOUGLAS ROAD	1,703	3,152	-46.0%	961	1,291	-25.6%	677	949	-28.6%	44,637	76,657	-41.8%
DR. MARTIN LUTHER KING, JR. (*)	766	1,083	-29.3%	526	607	-13.3%	346	467	-25.9%	14,113	27,876	-49.4%
EARLINGTON HEIGHTS	939	1,489	-36.9%	635	900	-29.4%	509	715	-28.7%	25,671	38,994	-34.2%
GOVERNMENT CENTER	3,150	9,010	-65.0%	1,942	3,668	-47.1%	1,412	2,848	-50.4%	84,191	220,083	-61.7%
HIALEAH	695	1,158	-40.0%	431	570	-24.3%	286	442	-35.3%	18,393	29,152	-36.9%
MIAMI INTERNATIONAL AIRPORT	663	1,659	-60.0%	613	1,283	-52.3%	534	1,303	-59.0%	19,721	47,614	-58.6%
NORTHSIDE	919	1,324	-30.6%	705	801	-12.0%	543	645	-15.8%	26,082	34,603	-24.6%
OKEECHOBEE	600	1,044	-42.5%	316	386	-18.2%	221	251	-12.0%	15,547	24,935	-37.6%
OVERTOWN / ARENA	707	1,961	-64.0%	451	570	-20.8%	402	473	-15.2%	19,164	46,185	-58.5%
PALMETTO	708	1,324	-46.5%	319	392	-18.6%	190	254	-25.2%	17,795	30,789	-42.2%
SANTA CLARA	482	726	-33.6%	328	419	-21.7%	208	274	-24.2%	12,928	18,484	-30.1%
SOUTH MIAMI	1,238	2,596	-52.3%	746	1,147	-34.9%	527	818	-35.6%	32,757	63,913	-48.7%
TRI-RAIL	706	1,099	-35.8%	453	557	-18.7%	309	459	-32.7%	18,822	27,850	-32.4%
UNIVERSITY	453	1,723	-73.7%	233	532	-56.1%	160	380	-57.8%	11,679	40,389	-71.1%
VIZCAYA	690	1,187	-41.9%	434	601	-27.7%	316	458	-30.9%	18,386	29,886	-38.5%
TOTAL	29,097	58,274	-50.1%	17,825	24,987	-28.7%	13,282	19,444	-31.7%	769,194	1,433,928	-46.4%

(†) All Metrorail stations reported net YOY losses in average weekday ridership in December 2020, due to effects from the SARS-CoV-2 pandemic; rides were fare-free beginning March 22, 2020.

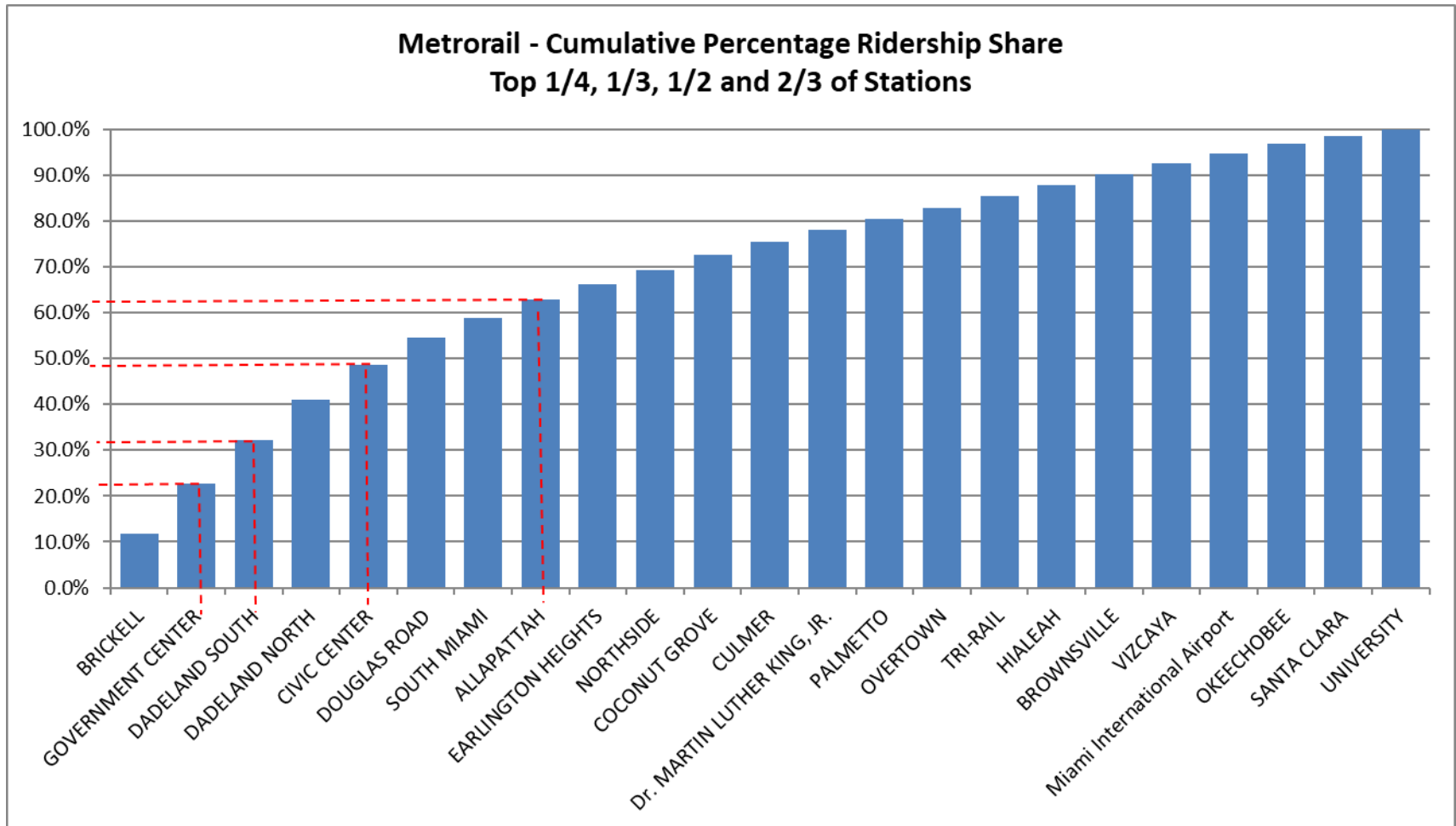
(*) Dr. Martin Luther King, Jr. station did not report video boardings data for ten (10) days in December 2020; the average ridership calculations take this into account.

METRORAIL HOLIDAY BOARDINGS BY STATION

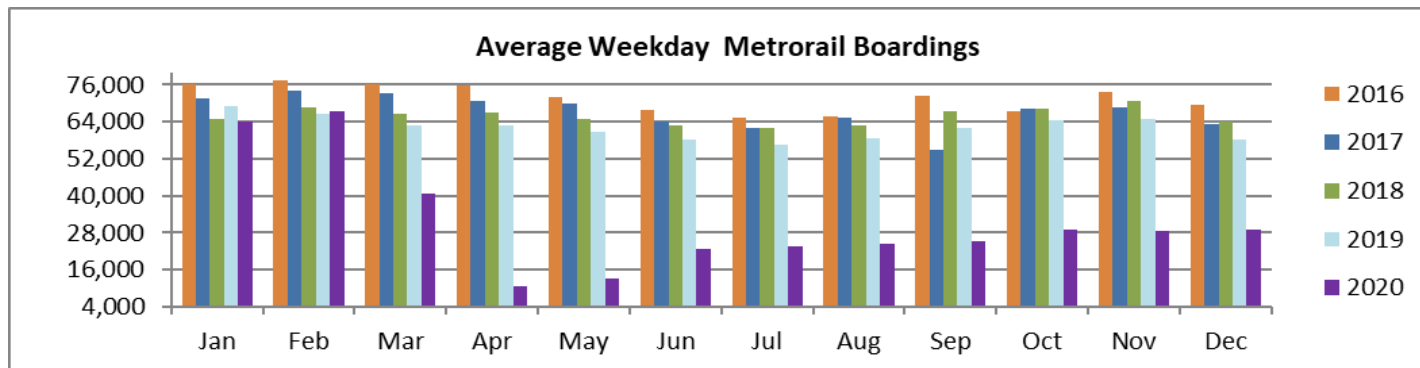
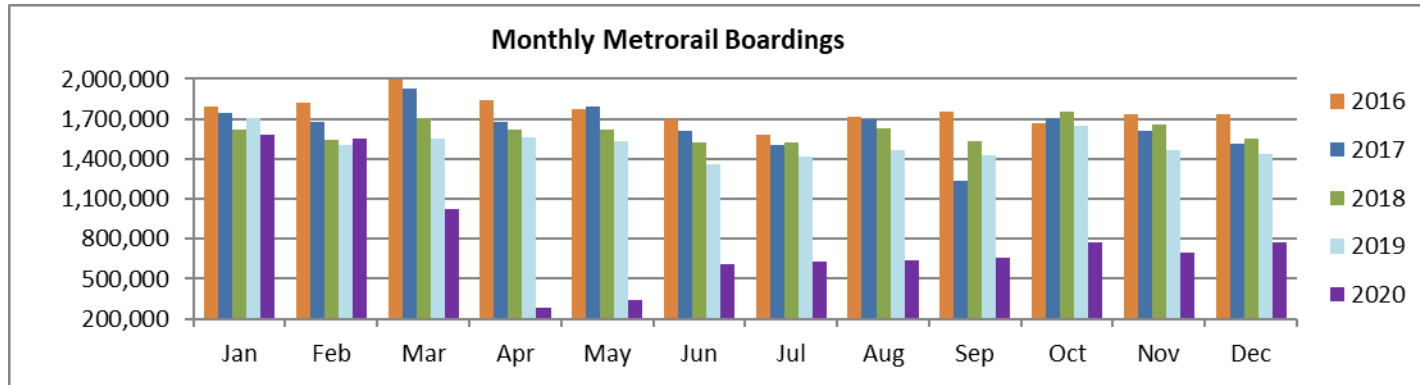
	Christmas Day	Christmas Day	Percent Change
STATIONS	2019	2020	20 vs 19
ALLAPATTAH	577	513	-11.1%
BRICKELL	1,251	1,084	-13.3%
BROWNSVILLE	307	403	31.3%
CIVIC CENTER	541	433	-20.0%
COCONUT GROVE	424	321	-24.3%
CULMER	456	412	-9.6%
DADELAND NORTH	631	488	-22.7%
DADELAND SOUTH	1,172	1,221	4.2%
DOUGLAS ROAD	553	625	13.0%
DR. MARTIN LUTHER KING, JR.(*)	362		
EARLINGTON HEIGHTS	558	431	-22.8%
GOVERNMENT CENTER	1,961	1,472	-24.9%
HIALEAH	345	242	-29.9%
MIAMI INTERNATIONAL AIRPORT	1,133	547	-51.7%
NORTHSIDE	377	865	129.4%
OKEECHOBEE	226	195	-13.7%
OVERTOWN / ARENA	350	205	-41.4%
PALMETTO	153	188	22.9%
SANTA CLARA	193	179	-7.3%
SOUTH MIAMI	727	442	-39.2%
TRI-RAIL	251	252	0.4%
UNIVERSITY	190	138	-27.4%
VIZCAYA	258	208	-19.4%
TOTAL	12,996	10,864	-16.4%

(*) No video ridership data available at Dr. Martin Luther King, Jr. station on Christmas Day.

METRORAIL CUMULATIVE PERCENTAGE RIDERSHIP SHARE



TOTAL MONTHLY AND AVERAGE WEEKDAY RIDERSHIP YEAR OVER YEAR COMPARISON CHARTS – METRORAIL



**“TOP 5 / BOTTOM 5” RAIL STATIONS AVERAGE WEEKDAY RIDERSHIP PERFORMANCE
YEAR OVER YEAR COMPARISONS**

Station	Dec-20	Dec-19	Absolute Delta (1)	Percent Delta
BROWNSVILLE	691	797	-106	-13.3%
SANTA CLARA	482	726	-244	-33.6%
Dr. MARTIN LUTHER KING, JR.	766	1,083	-317	-29.3%
CULMER	842	1,215	-373	-30.7%
TRI-RAIL	706	1,099	-393	-35.8%
GOVERNMENT CENTER	3,150	9,010	-5,860	-65.0%
DADELAND SOUTH	2,790	6,361	-3,571	-56.1%
CIVIC CENTER	2,259	5,119	-2,860	-55.9%
DADELAND NORTH	2,518	5,262	-2,743	-52.1%
BRICKELL	3,451	5,632	-2,181	-38.7%

(1) Averages rounded to the nearest boarding.

(†) All Metrorail stations reported net losses in December 2020, due to effects on ridership from the SARS-CoV-2 pandemic.

METRORAIL PARKING PATRONAGE SUMMARY

December 2020

PARK-RIDE LOT	ACTUAL CAPACITY (1)	ACTUAL OCCUPANCY (2)	PERCENT OCCUPANCY
DADELAND SOUTH	1,280		
DADELAND NORTH	1,963		
SOUTH MIAMI	1,081		
UNIVERSITY	260		
DOUGLAS ROAD	150		
COCONUT GROVE	100		
VIZCAYA	120		
CULMER	40		
SANTA CLARA	61		
ALLAPATTAH	74		
EARLINGTON HEIGHTS	361		
BROWNSVILLE	100		
DR. MARTIN LUTHER KING JR. (MDT)	62		
DR. MARTIN LUTHER KING JR. (GARAGE)	631		
NORTHSIDE	197		
HIALEAH	338		
OKEECHOBEE	1,398		
PALMETTO	700		
TOTAL	8,916		

(1) Number of spaces could vary each week; shown are available spaces during final week of month.

(2) Averages rounded to nearest unit; no counts effected in December 2020 due to reassignment of staff as result of SARS-CoV-2 pandemic.

Metromover

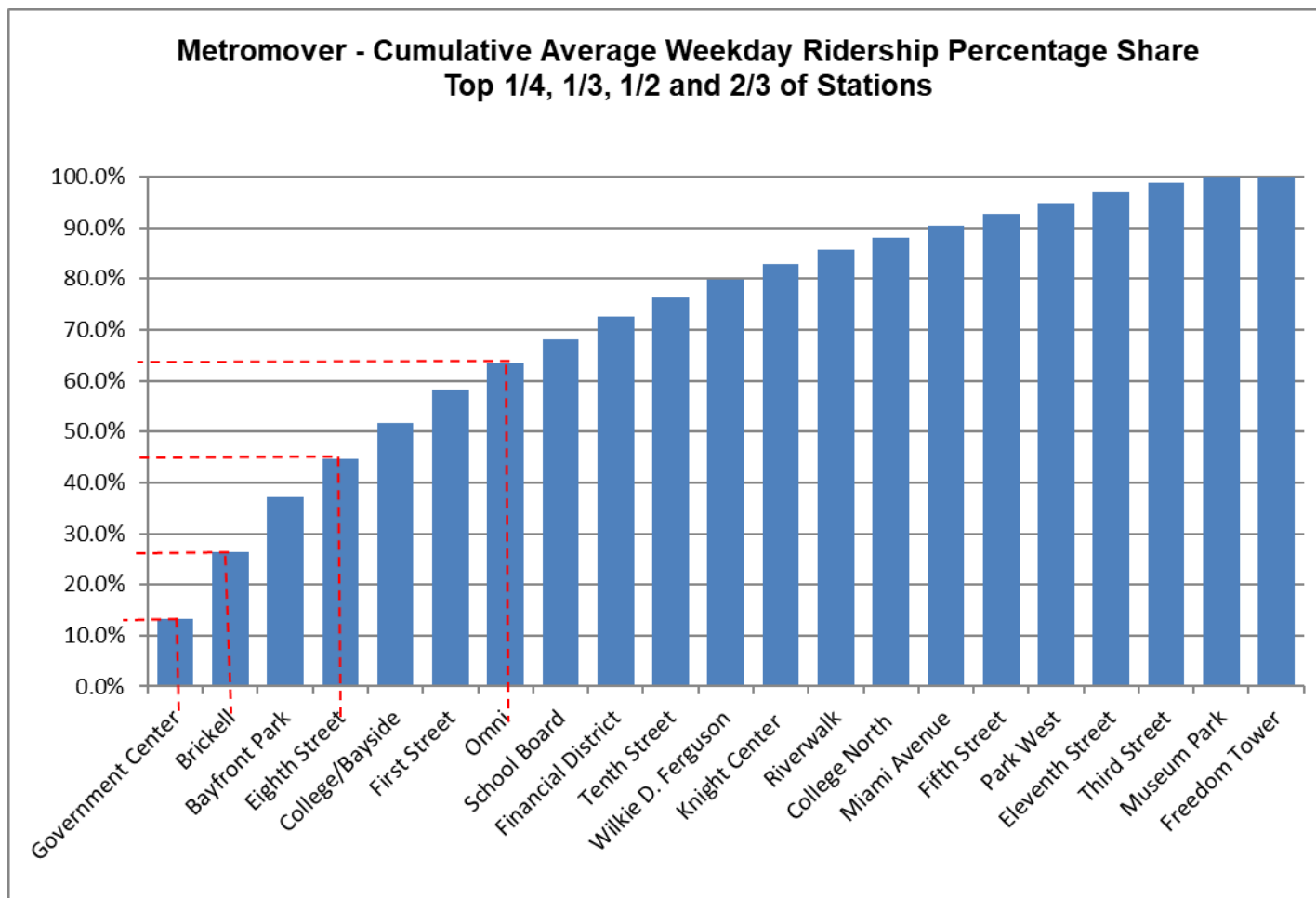


METROMOVER MONTHLY AND AVERAGE DAILY BOARDINGS BY STATION

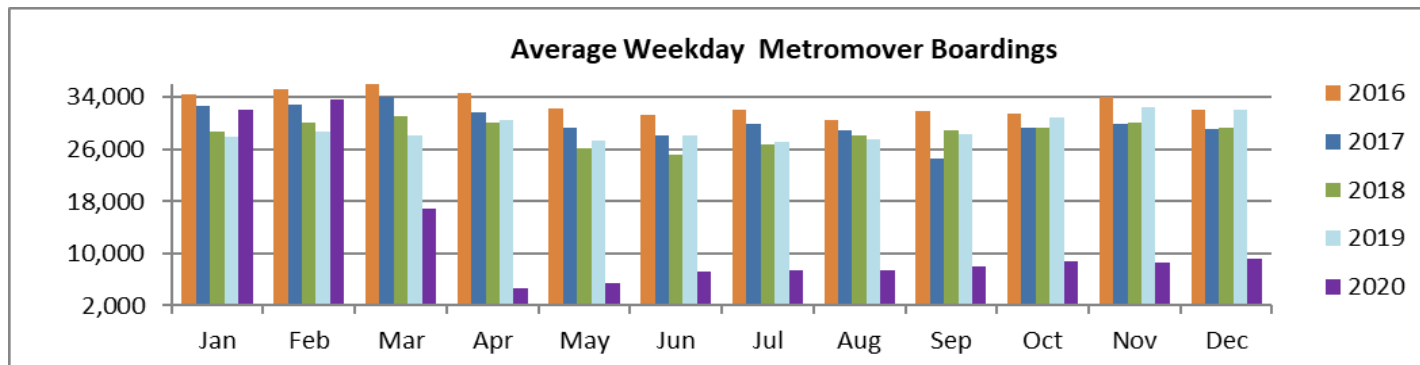
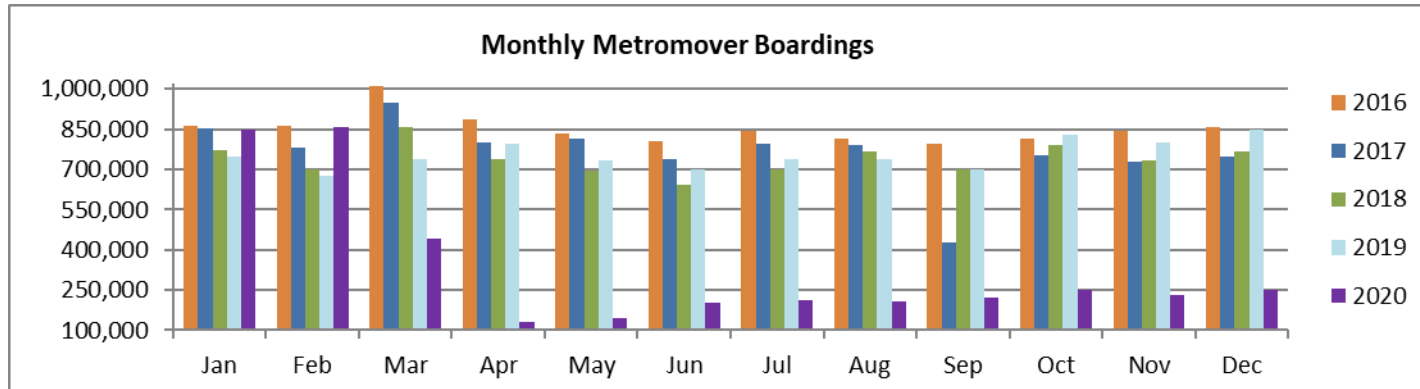
	Average Weekday	Average Weekday	Percent Change	Average Saturday	Average Saturday	Percent Change	Average Sunday	Average Sunday	Percent Change	Christmas Day	Christmas Day	Percent Change	Total Monthly	Total Monthly	Percent Change
STATIONS	Dec-20	Dec-19	20 vs 19	Dec-20	Dec-19	20 vs 19	Dec-20	Dec-19	20 vs 19	Dec-20	Dec-19	20 vs 19	Dec-20	Dec-19	20 vs 19
School Board	433	841	-48.5%	373	752	-50.4%	321	601	-46.7%	303	395	-23.3%	12,604	24,074	-47.6%
Omni	468	2,045	-77.1%	443	1,864	-76.2%	382	1,472	-74.0%	328	923	-64.5%	13,918	58,675	-76.3%
Museum Park	106	176	-40.1%	134	163	-17.5%	116	150	-23.1%	121	34	255.9%	2,875	5,138	-44.0%
Eleventh Street	186	277	-32.8%	124	316	-60.8%	104	251	-58.6%	97	176	-44.9%	5,101	8,510	-40.1%
Park West	205	346	-40.8%	150	333	-55.1%	126	212	-40.6%	171	192	-10.9%	5,777	9,844	-41.3%
Freedom Tower		404			369			246			255			11,438	
Government Center	1,213	7,947	-84.7%	943	2,205	-57.2%	786	1,699	-53.7%	969	1,470	-34.1%	34,573	185,666	-81.4%
Miami Avenue	212	442	-52.1%	169	327	-48.4%	160	247	-35.2%	138	270	-48.9%	6,109	12,099	-49.5%
Third Street	168	275	-39.1%	147	187	-21.4%	128	205	-37.3%	127	189	-32.8%	4,137	7,739	-46.5%
Knight Center	278	1,027	-73.0%	166	492	-66.4%	175	400	-56.4%	178	259	-31.3%	7,645	25,787	-70.4%
Bayfront Park	989	3,407	-71.0%	985	2,831	-65.2%	827	2,316	-64.3%	1,027	2,313	-55.6%	30,039	96,768	-69.0%
First Street	591	1,659	-64.4%	497	1,310	-62.1%	392	995	-60.7%	160	754	-78.8%	13,863	45,812	-69.7%
College/Bayside	641	1,901	-66.3%	541	1,586	-65.9%	480	1,299	-63.1%	617	1,619	-61.9%	15,219	54,382	-72.0%
College North	217	790	-72.5%	127	316	-59.9%	96	227	-57.9%	166	171	-2.9%	5,831	19,151	-69.6%
Wilkie D. Ferguson	318	580	-45.1%	277	330	-16.0%	253	282	-10.3%	196	260	-24.6%	8,433	15,163	-44.4%
Riverwalk	256	670	-61.8%	220	489	-55.0%	177	391	-54.8%	205	391	-47.6%	7,415	18,367	-59.6%
Fifth Street	207	539	-61.6%	134	410	-67.4%	112	276	-59.4%	118	235	-49.8%	5,652	14,567	-61.2%
Eighth Street	681	2,389	-71.5%	716	2,113	-66.1%	618	1,678	-63.2%	390	1,169	-66.6%	20,711	68,169	-69.6%
Tenth Street	355	823	-56.9%	279	619	-54.9%	228	474	-52.0%	164	416	-60.6%	9,994	22,554	-55.7%
Brickell	1,195	4,039	-70.4%	1,158	2,765	-58.1%	978	2,250	-56.5%		1,861		30,303	108,992	-72.2%
Financial District	403	1,413	-71.5%	241	841	-71.3%	205	670	-69.4%	171	544	-68.6%	10,820	36,936	-70.7%
TOTAL	9,120	31,988	-71.5%	7,822	20,619	-62.1%	6,661	16,341	-59.2%	5,646	13,896	-59.4%	251,019	849,832	-70.5%

(1) Freedom Tower Station was closed for construction throughout December 2020.

METROMOVER CUMULATIVE PERCENTAGE RIDERSHIP SHARE



TOTAL MONTHLY AND AVERAGE WEEKDAY RIDERSHIP YEAR OVER YEAR COMPARISON CHARTS – METROMOVER



**“TOP 5 / BOTTOM 5” MOVER STATIONS AVERAGE WEEKDAY RIDERSHIP PERFORMANCE
YEAR OVER YEAR COMPARISONS**

Station	Dec-20	Dec-19	Absolute Delta (1)	Percent Delta
Museum Park	106	176	-71	-40.1%
Eleventh Street	186	277	-91	-32.8%
Third Street	168	275	-108	-39.1%
Park West	205	346	-141	-40.8%
Miami Avenue	212	442	-231	-52.1%
Government Center	1,213	7,947	-6,734	-84.7%
Brickell	1,195	4,039	-2,844	-70.4%
Bayfront Park	989	3,407	-2,418	-71.0%
Eighth Street	681	2,389	-1,707	-71.5%
Omni	468	2,045	-1,577	-77.1%

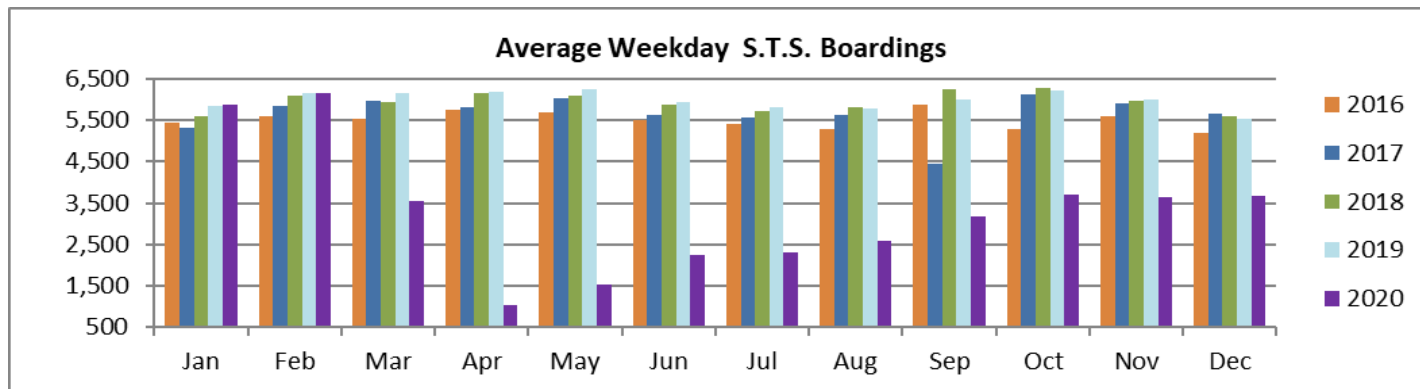
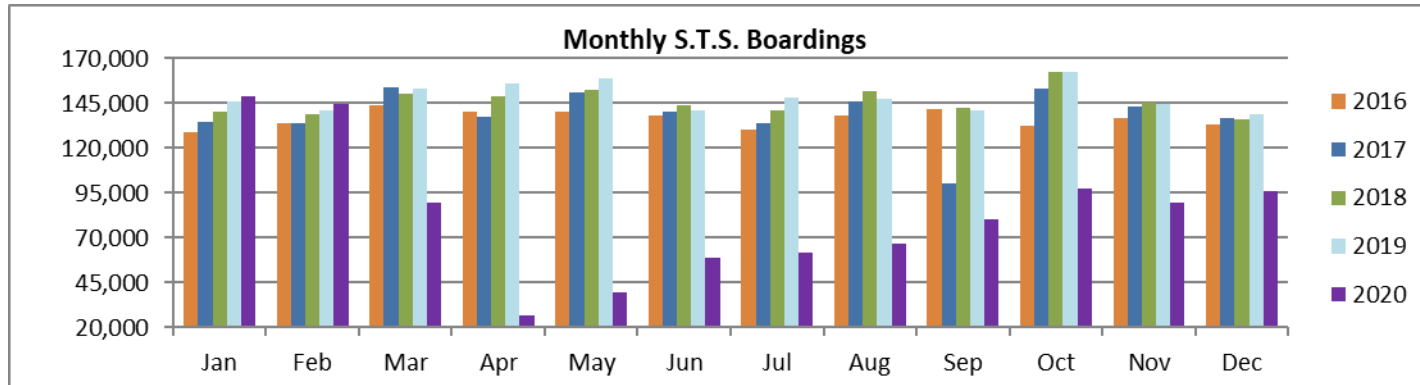
(1) Averages rounded to the nearest boarding.

(†) All Metromover stations reported net YOY losses in December 2020, due to effects on ridership from the SARS-CoV-2 pandemic.

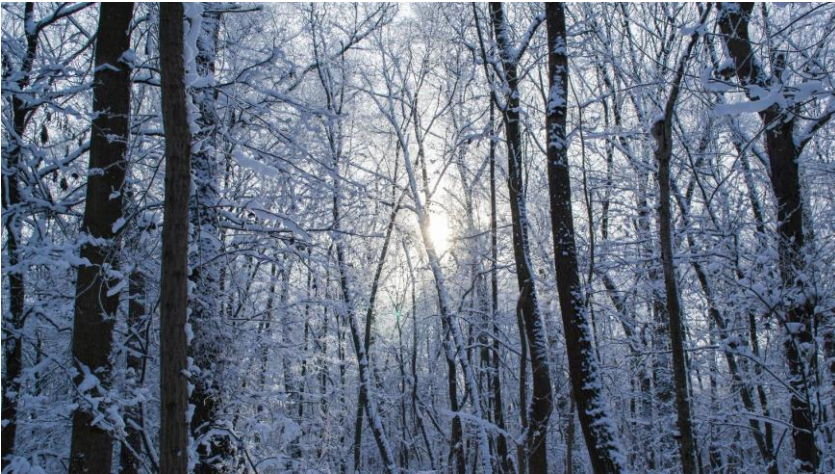
Special Transportation Services



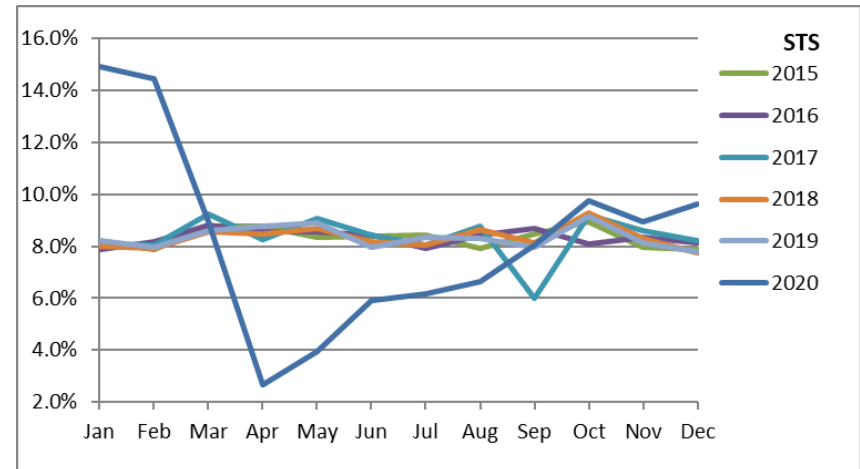
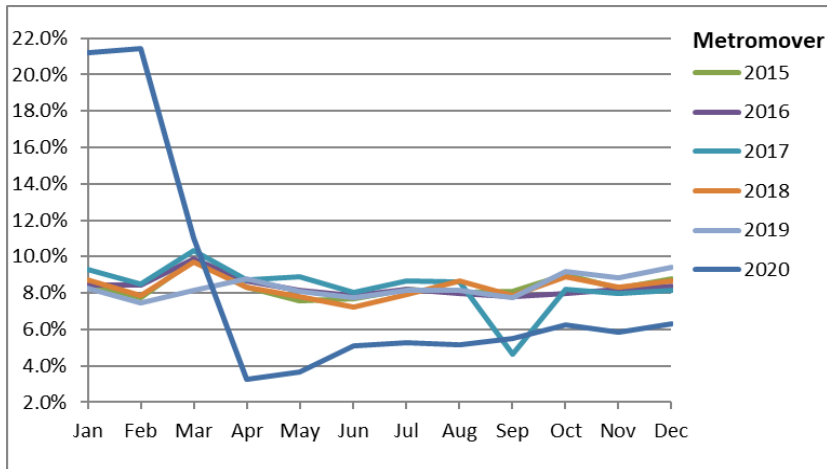
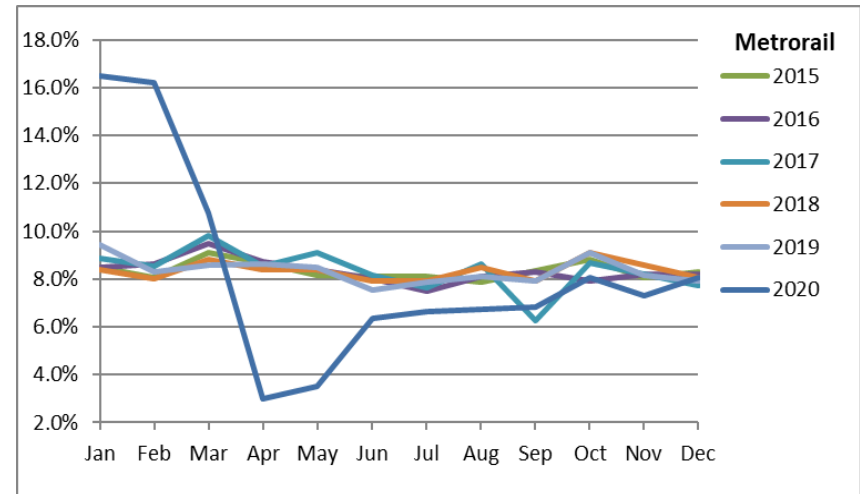
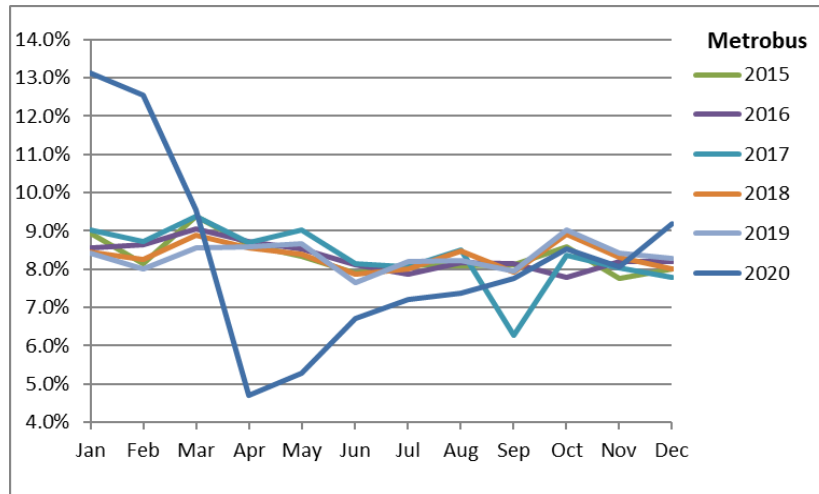
TOTAL MONTHLY AND AVERAGE WEEKDAY RIDERSHIP YEAR OVER YEAR COMPARISON CHARTS – SPECIAL TRANSPORTATION SERVICES (S.T.S.)



Ridership Seasonality



RIDERSHIP SEASONALITY – PERCENT RIDERSHIP SHARE BY MONTH AND CALENDAR YEAR FOR EACH MODE



Note: the prominent dips seen in the fall of 2017 and beginning in the spring of 2020 are due to Hurricane Irma and the SARS-CoV-2 pandemic, respectively.