



TRANSPORTATION AND PUBLIC WORKS

RIDERSHIP TECHNICAL REPORT

Division of Performance and Materials Management



Table of Contents

<i>Table of Contents</i>	2-3
All Modes Overview	4
Total Monthly Weekday, Saturday and Sunday Monthly Boardings By Mode	5
Average Weekday, Saturday and Sunday Boardings by Mode	6
Metrobus Total Monthly Ridership Comparisons by Fiscal Year	7
Metrorail Total Monthly Ridership Comparisons by Fiscal Year	8
Metromover Total Monthly Ridership Comparisons by Fiscal Year	9
STS Total Monthly Ridership Comparisons by Fiscal Year	10
All-Modes Combined Total Monthly Ridership Comparisons By Fiscal Year	11
All Modes Combined Total Monthly and Average Weekday Ridership – Year over Year Comparison Charts	12
Average Weekday Ridership – Modal Splits	13
Daily Ridership for All Modes Combined since February 1, 2020	14
Metrobus	15
Metrobus Average Weekday Boardings by Route	16-18
Metrobus Average Saturday Boardings by Route	19-20
Metrobus Average Sunday Boardings by Route	21-22
Metrobus Monthly Total Boardings by Route	23-25
Metrobus Holiday Boardings by Route	26
Year-over-Year Bus Ridership by Route Service Type	27-28
Bus Routes as Ranked by Percentage of Average Weekday Ridership	29
Metrobus Cumulative Percentage Average Weekday Ridership Share by Route (Top 75%)	30
Total Monthly and Average Weekday Rail Ridership – Year over Year Comparison Charts	31
Bus “Top 5 / Bottom 5” Routes Average Weekday Ridership Performance	32
Daily Metrobus Ridership since February 1, 2020	33
Metrobus Parking Patronage Summary	34

Table of Contents (continued)

Metrorail	35
Metrorail Average Weekday Boardings by Station	36
Metrorail Average Saturday Boardings by Station	37
Metrorail Average Sunday Boardings by Station	38
Metrorail Total Monthly Boardings by Station	39
Metrorail Holiday Boardings	40
Metrorail Cumulative Percentage Average Weekday Ridership Share	41
Total Monthly and Average Weekday Rail Ridership – Year over Year Comparison Charts	42
“Top 5 / Bottom 5” Stations Average Weekday Ridership Performance	43
Daily Metrorail Ridership since February 1, 2020	44
Metrorail Parking Patronage Summary	45
Metromover	46
Monthly and Average Daily Mover Boardings by Station	47
Metromover Cumulative Percentage Average Weekday Ridership Share	48
Total Monthly and Average Weekday Mover Ridership – Year over Year Comparison Charts	49
“Top 5 / Bottom 5” Stations Average Weekday Ridership Performance	50
Daily Metromover Ridership since February 1, 2020	51
Special Transportation Services (STS)	52
STS Monthly and Average Daily Boardings	53
Total Monthly and Average Weekday STS Ridership – Year over Year Comparison Charts	54
Daily STS Ridership since February 1, 2020	55
Ridership Seasonality	56
Ridership Seasonality – Percent Ridership Share by Month and Calendar year for Each Mode	57

All Modes Overview



TOTAL MONTHLY WEEKDAY, SATURDAY AND SUNDAY BOARDINGS BY MODE June 2021

TRAVEL MODE	MONTH'S TOTAL WEEKDAYS RIDERSHIP	MONTH'S TOTAL SATURDAYS RIDERSHIP	MONTH'S TOTAL SUNDAYS RIDERSHIP	TOTAL MONTHLY RIDERSHIP	% CHANGE vs Jun 2020 TOTAL MONTH RIDERSHIP
METROBUS (1)	2,212,041	260,703	199,826	2,672,570	20.9%
METRORAIL (2)	624,115	56,516	42,838	723,469	18.8%
METROMOVER (3)	248,025	19,905	18,215	286,145	40.5%
STS PARATRANSIT (4)	96,835	8,898	6,664	112,397	90.2%
TOTAL	3,181,016	346,022	267,543	3,794,581	23.1%

(*) June 21, 2021 (Juneteenth) ridership was as follows:

Metrobus	103,629
Metrail	26,701
Metromover	7,328
STS	4,086

- (1) Metrobus fares resumed on June 1, 2021, following a 14-month period of fare-free rides as a result of the SARS-CoV-2 pandemic. The NextFare System farebox data replaced the bus automatic passenger counter data as ridership data of record starting on that date.
- (2) Metrorail fares resumed on June 1, 2021, following a 14-month period of fare-free rides as a result of the SARS-CoV-2 pandemic. The NextFare System faregate data replaced the video data as ridership data of record starting on that date.
- (3) Beginning March 13, 2020 (day of National Emergency Declaration due to SARS-CoV-2 pandemic), only raw data from Metromover automatic passenger counters is reported; no estimates are performed after March 13, 2020.
- (4) Paratransit ridership data as reported by the contractor.

AVERAGE WEEKDAY, SATURDAY AND SUNDAY BOARDINGS BY MODE
June 2021

Travel Mode	Average Weekday (*)	Average Saturday	Average Sunday	% Change Jun 2020 Weekday	% Change Jun 2020 Saturday	% Change Jun 2020 Sunday
METROBUS	100,645	65,182	49,957	23.3%	13.7%	5.8%
METRORAIL	28,448	14,129	10,710	24.3%	-4.3%	-7.2%
METROMOVER	12,529	9,278	7,850	71.6%	55.0%	64.5%
STS PARATRANSIT	4,402	2,225	1,666	95.8%	53.4%	73.7%
Totals (1)	146,024	90,813	70,183	28.1%	14.2%	8.8%

(*) Average weekday ridership includes Juneteenth (6/21/21) for Metrobus and STS but excludes it for Metrorail and Metromover.

(**) Average ridership is calculated and published only for those days and stations with nontrivial amounts of reported data.

METROBUS TOTAL MONTHLY RIDERSHIP COMPARISONS BY FISCAL YEAR

Bus			Variance			Variance			Variance		
	FY 17	FY 18	17 to 18	FY 19	18 to 19	FY 20	19 to 20	FY 21	20 to 21	17 to 21	
Oct	4,925,781	4,709,590	-4.4%	4,554,886	-3.3%	4,507,012	-1.1%	2,805,139	-37.8%	-43.1%	
Nov	5,181,524	4,522,250	-12.7%	4,245,535	-6.1%	4,197,225	-1.1%	2,651,290	-36.8%	-48.8%	
Dec	5,192,692	4,380,099	-15.6%	4,081,581	-6.8%	4,126,990	1.1%	3,022,530	-26.8%	-41.8%	
Jan	5,084,085	4,307,001	-15.3%	4,195,911	-2.6%	4,316,998	2.9%	3,082,746	-28.6%	-39.4%	
Feb	4,914,307	4,208,811	-14.4%	3,994,019	-5.1%	4,123,083	3.2%	3,076,966	-25.4%	-37.4%	
Mar	5,287,813	4,534,564	-14.2%	4,266,768	-5.9%	3,136,162	-26.5%	3,660,639	16.7%	-30.8%	
Apr	4,895,697	4,360,997	-10.9%	4,291,135	-1.6%	1,544,316	-64.0%	3,625,048	134.7%	-26.0%	
May	5,087,877	4,277,628	-15.9%	4,330,922	1.2%	1,734,609	-59.9%	3,683,343	112.3%	-27.6%	
Jun	4,586,556	4,009,340	-12.6%	3,823,863	-4.6%	2,210,725	-42.2%	2,672,570	20.9%	-41.7%	
Jul	4,539,259	4,080,664	-10.1%	4,094,906	0.3%	2,366,749	-42.2%				
Aug	4,780,589	4,326,980	-9.5%	4,109,613	-5.0%	2,422,014	-41.1%				
Sep	3,524,818	4,041,992	14.7%	3,971,220	-1.8%	2,546,923	-35.9%				
FY Total	58,000,998	51,759,916	-10.8%	49,960,359	-3.5%	37,232,806	-25.5%				

METRORAIL TOTAL MONTHLY RIDERSHIP COMPARISONS BY FISCAL YEAR

Rail	FY 17	FY 18	Variance 17 to 18	FY 19	Variance 18 to 19	FY 20	Variance 19 to 20	FY 21	Variance 20 to 21	Variance 17 to 21
Oct	1,670,933	1,708,564	2.3%	1,757,225	2.8%	1,643,166	-6.5%	769,525	-53.2%	-53.9%
Nov	1,734,267	1,609,888	-7.2%	1,656,929	2.9%	1,469,448	-11.3%	699,492	-52.4%	-59.7%
Dec	1,734,768	1,517,341	-12.5%	1,553,804	2.4%	1,433,928	-7.7%	769,194	-46.4%	-55.7%
Jan	1,743,638	1,615,576	-7.3%	1,708,695	5.8%	1,576,340	-7.7%	799,119	-49.3%	-54.2%
Feb	1,676,215	1,545,581	-7.8%	1,501,458	-2.9%	1,549,118	3.2%	730,792	-52.8%	-56.4%
Mar	1,926,434	1,700,714	-11.7%	1,554,851	-8.6%	1,027,319	-33.9%	917,097	-10.7%	-52.4%
Apr	1,677,459	1,619,890	-3.4%	1,559,446	-3.7%	287,803	-81.5%	827,414	187.5%	-50.7%
May	1,787,885	1,618,504	-9.5%	1,531,597	-5.4%	337,696	-78.0%	887,111	162.7%	-50.4%
Jun	1,605,234	1,524,311	-5.0%	1,359,966	-10.8%	608,758	-55.2%	723,469	18.8%	-54.9%
Jul	1,500,243	1,527,380	1.8%	1,419,158	-7.1%	632,964	-55.4%			
Aug	1,693,524	1,632,471	-3.6%	1,463,646	-10.3%	641,275	-56.2%			
Sep	1,234,135	1,530,088	24.0%	1,427,726	-6.7%	654,244	-54.2%			
Total	19,984,735	19,150,308	-4.2%	18,494,501	-3.4%	11,862,059	-35.9%			

METROMOVER TOTAL MONTHLY RIDERSHIP COMPARISONS BY FISCAL YEAR

Mover	FY 17		Variance	FY 19		Variance	FY 21		Variance	Variance
	FY 17	FY 18	17 to 18	FY 19	18 to 19	FY 20	19 to 20	FY 21	20 to 21	17 to 21
Oct	814,781	751,323	-7.8%	790,533	5.2%	831,234	5.1%	250,044	-69.9%	-69.3%
Nov	841,679	729,519	-13.3%	735,198	0.8%	799,632	8.8%	232,422	-70.9%	-72.4%
Dec	858,961	748,797	-12.8%	767,239	2.5%	849,832	10.8%	251,019	-70.5%	-70.8%
Jan	852,788	772,122	-9.5%	746,728	-3.3%	847,773	13.5%	255,968	-69.8%	-70.0%
Feb	780,514	698,107	-10.6%	675,160	-3.3%	855,398	26.7%	260,332	-69.6%	-66.6%
Mar	949,045	859,143	-9.5%	737,814	-14.1%	441,200	-40.2%	302,502	-31.4%	-68.1%
Apr	802,778	740,036	-7.8%	795,696	7.5%	130,549	-83.6%	310,772	138.1%	-61.3%
May	814,791	694,106	-14.8%	734,645	5.8%	146,454	-80.1%	292,922	100.0%	-64.0%
Jun	737,042	641,675	-12.9%	701,318	9.3%	203,637	-71.0%	286,145	40.5%	-61.2%
Jul	796,649	700,462	-12.1%	739,814	5.6%	210,596	-71.5%			
Aug	788,734	768,728	-2.5%	739,785	-3.8%	205,995	-72.2%			
Sep	425,641	698,505	64.1%	699,879	0.2%	219,696	-68.6%			
Total	9,463,403	8,802,523	-7.0%	8,863,809	0.7%	5,741,996	-35.2%			

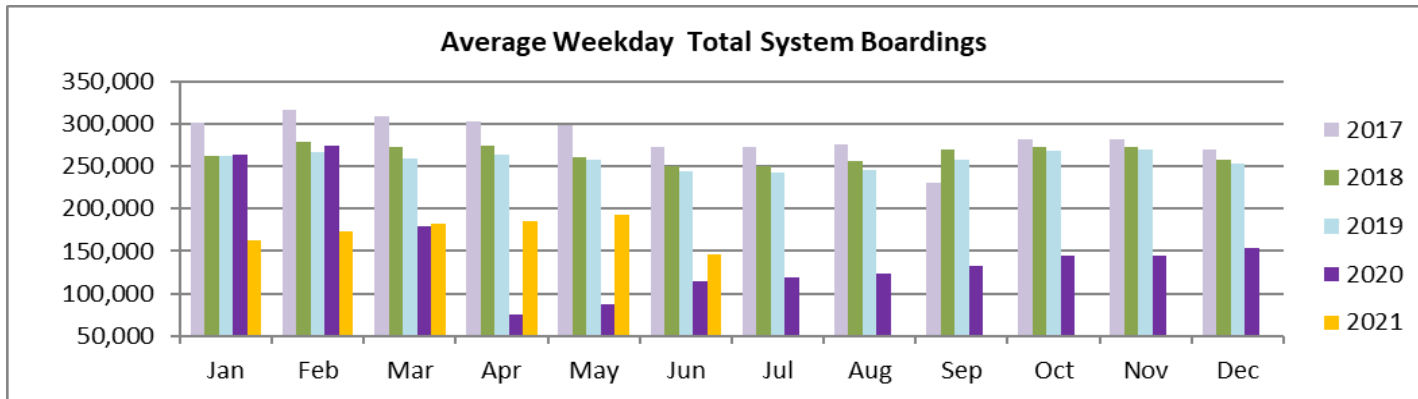
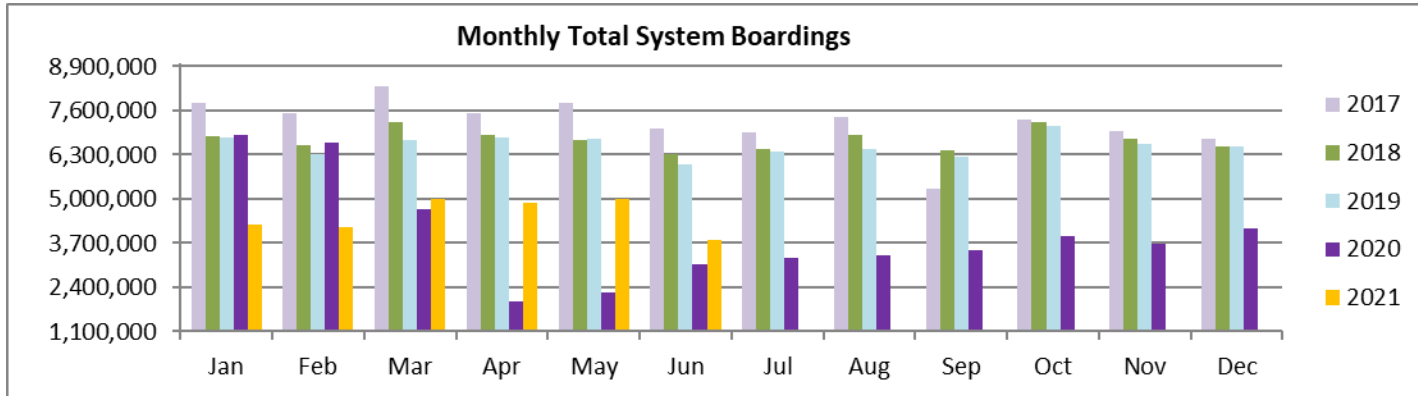
SPECIAL TRANSPORTATION SERVICES (STS) TOTAL MONTHLY RIDERSHIP COMPARISONS BY FISCAL YEAR

STS			Variance			Variance			Variance		
	FY 17	FY 18	17 to 18	FY 19	18 to 19	FY 20	19 to 20	FY 21	20 to 21	17 to 21	
Oct	132,211	153,409	16.0%	162,564	6.0%	162,704	0.1%	97,388	-40.1%	-26.3%	
Nov	137,030	143,375	4.6%	145,653	1.6%	144,366	-0.9%	89,387	-38.1%	-34.8%	
Dec	133,439	136,955	2.6%	136,110	-0.6%	138,642	1.9%	96,366	-30.5%	-27.8%	
Jan	134,273	140,042	4.3%	146,268	4.4%	149,114	1.9%	97,928	-34.3%	-27.1%	
Feb	134,089	139,032	3.7%	141,396	1.7%	144,392	2.1%	98,285	-31.9%	-26.7%	
Mar	153,790	150,384	-2.2%	153,191	1.9%	89,634	-41.5%	112,930	26.0%	-26.6%	
Apr	137,217	148,879	8.5%	155,808	4.7%	26,877	-82.7%	120,122	346.9%	-12.5%	
May	151,138	152,164	0.7%	158,665	4.3%	39,654	-75.0%	118,636	199.2%	-21.5%	
Jun	140,623	143,653	2.2%	141,320	-1.6%	59,093	-58.2%	112,397	90.2%	-20.1%	
Jul	133,656	141,020	5.5%	148,232	5.1%	61,765	-58.3%				
Aug	145,760	151,750	4.1%	147,331	-2.9%	66,563	-54.8%				
Sep	100,010	142,360	42.3%	141,387	-0.7%	80,346	-43.2%				
Total	1,633,236	1,743,023	6.7%	1,777,925	2.0%	1,163,150	-34.6%				

ALL-MODES COMBINED TOTAL MONTHLY RIDERSHIP COMPARISONS BY FISCAL YEAR

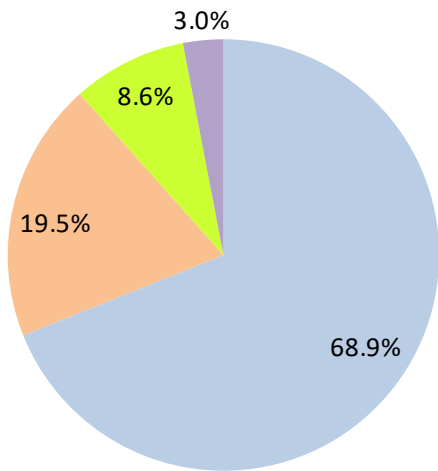
All Modes Month	Boardings					Variances				
	FY 17	FY 18	FY 19	FY 20	FY 21	17 TO 18	18 TO 19	19 TO 20	20 TO 21	17 TO 21
Oct	7,543,706	7,322,886	7,265,208	7,144,116	3,922,096	-2.9%	-0.8%	-1.7%	-45.1%	-48.0%
Nov	7,894,500	7,005,032	6,783,315	6,610,671	3,672,591	-11.3%	-3.2%	-2.5%	-44.4%	-53.5%
Dec	7,919,860	6,783,192	6,538,734	6,549,392	4,139,109	-14.4%	-3.6%	0.2%	-36.8%	-47.7%
Jan	7,814,784	6,834,741	6,797,602	6,890,225	4,235,761	-12.5%	-0.5%	1.4%	-38.5%	-45.8%
Feb	7,505,125	6,591,531	6,312,033	6,671,991	4,166,375	-12.2%	-4.2%	5.7%	-37.6%	-44.5%
Mar	8,317,082	7,244,805	6,712,624	4,694,315	4,993,168	-12.9%	-7.3%	-30.1%	6.4%	-40.0%
Apr	7,513,151	6,869,802	6,802,085	1,989,545	4,883,356	-8.6%	-1.0%	-70.8%	145.5%	-35.0%
May	7,841,691	6,742,402	6,755,829	2,258,413	4,982,012	-14.0%	0.2%	-66.6%	120.6%	-36.5%
Jun	7,069,455	6,318,979	6,026,467	3,082,213	3,794,581	-10.6%	-4.6%	-48.9%	23.1%	-46.3%
Jul	6,969,807	6,449,526	6,402,110	3,272,074		-7.5%	-0.7%	-48.9%		
Aug	7,408,607	6,879,929	6,460,375	3,335,847		-7.1%	-6.1%	-48.4%		
Sep	5,284,604	6,412,945	6,240,212	3,501,209		21.4%	-2.7%	-43.9%		
FY Total	89,082,372	81,455,770	79,096,594	56,000,011		-8.6%	-2.9%	-29.2%		

TOTAL MONTHLY AND AVERAGE WEEKDAY RIDERSHIP YEAR OVER YEAR COMPARISON CHARTS – ALL MODES COMBINED



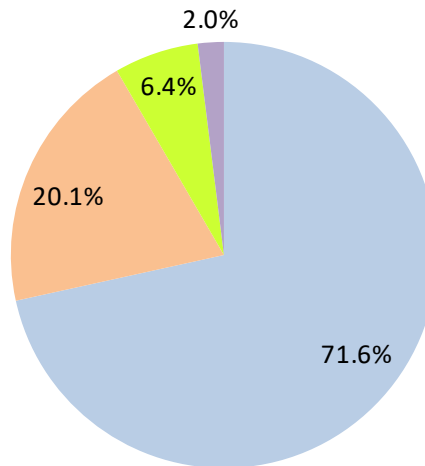
AVERAGE WEEKDAY RIDERSHIP - MODAL SPLITS

June 2021



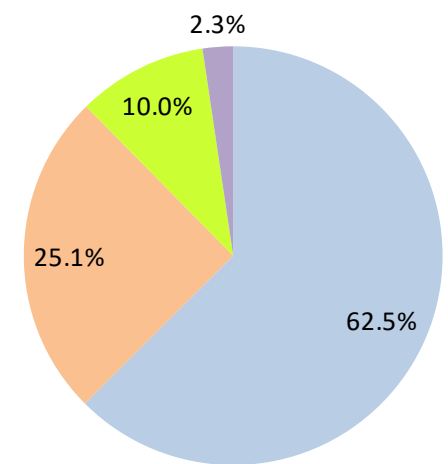
boardings

June 2020



boardings

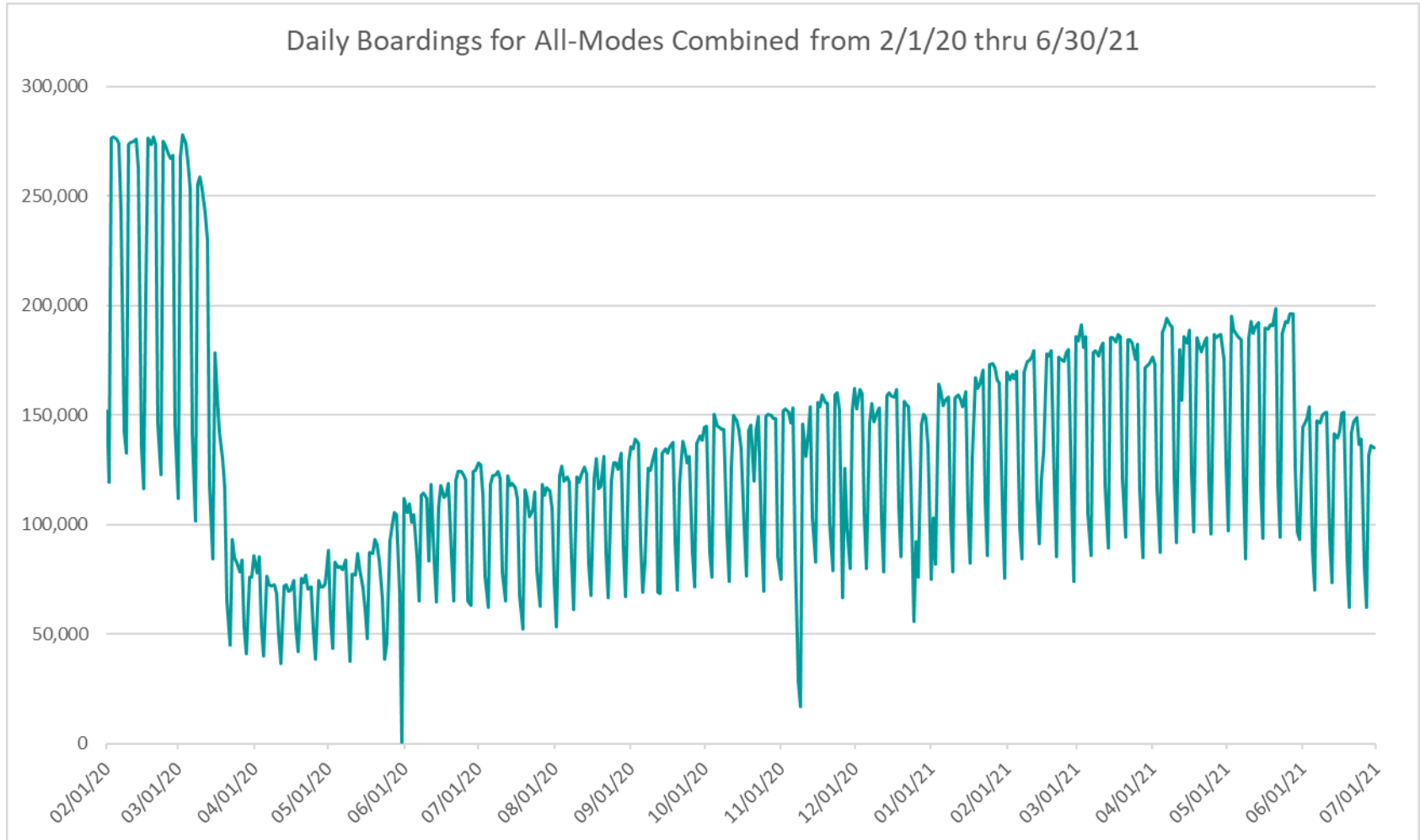
June 2019



boardings



DAILY RIDERSHIP FOR ALL MODES COMBINED SINCE FEBRUARY 1, 2020



- (1) National Emergency was declared on 3/13/20 as a result of the SARS-CoV-2 pandemic.
- (2) There was no Metrobus, Metrorail and Metromover service on 5/31/20, as a safety precaution.
- (3) The dip at the start of the second week of November 2020 is due to Hurricane Eta.
- (4) The reduction seen beginning 6/1/21 is partly due to the resumption of fares for bus and rail, and partly the result of having resumed reporting Cubic farebox data rather than bus APC counts, as well as Cubic rail faregate counts instead of video camera counts on that date.
- (5) Periodic (weekly) variations are prominent, since weekday ridership is almost always significantly higher than weekend or holiday ridership.

Metrobus



METROBUS AVERAGE WEEKDAY BOARDINGS BY ROUTE (†)

Route <i>weekdays</i>	Average Weekday	Average Weekday	Percent Change	Average Weekday	Percent Change	Average Weekday	Percent Change	Average Weekday	Percent Change
	Jun-21	Jun-20	YOY	Feb-20	Current vs Feb-20	May-21	MOM	Jun-19	YO2Y
1 (*)	142	156	-9.0%	184	-23.1%	203	-30.3%	279	-49.3%
2	1,731	1,362	27.1%	3,102	-44.2%	2,138	-19.0%	2,104	-17.7%
3	4,063	2,246	80.9%	5,137	-20.9%	4,950	-17.9%	4,527	-10.3%
7	2,145	1,624	32.0%	3,501	-38.7%	2,430	-11.7%	2,968	-27.7%
8	3,192	1,801	77.2%	3,909	-18.3%	4,606	-30.7%	3,569	-10.6%
9	4,173	2,925	42.7%	5,528	-24.5%	6,023	-30.7%	4,729	-11.8%
10	1,254	853	47.0%	2,482	-49.5%	1,885	-33.5%	2,023	-38.0%
11	5,338	3,478	53.5%	7,292	-26.8%	7,090	-24.7%	6,869	-22.3%
12	1,504	1,645	-8.6%	2,779	-45.9%	2,117	-29.0%	2,404	-37.4%
16	950	830	14.5%	1,862	-49.0%	1,441	-34.0%	1,681	-43.5%
17	2,008	2,353	-14.7%	3,878	-48.2%	2,959	-32.1%	3,302	-39.2%
19	674	625	7.8%	1,542	-56.3%	1,259	-46.5%	1,339	-49.7%
21	882	1,392	-36.6%	1,817	-51.5%	1,770	-50.2%	1,763	-50.0%
22	1,946	1,644	18.4%	3,640	-46.5%	2,866	-32.1%	3,314	-41.3%
24 - Coral Way Limited	829	920	-9.9%	1,340	-38.1%	1,459	-43.2%	1,587	-47.7%
27	4,125	3,634	13.5%	6,972	-40.8%	6,110	-32.5%	6,107	-32.5%
29 (*)	317	251	26.4%	534	-40.7%	375	-15.5%	595	-46.8%
31 - BUSWAY LOCAL	521	556	-6.2%	1,089	-52.1%	732	-28.8%	1,055	-50.6%
32	1,197	1,423	-15.9%	2,390	-49.9%	1,681	-28.8%	2,116	-43.4%
33	850	694	22.5%	1,687	-49.6%	1,269	-33.0%	1,435	-40.8%
34 EXPRESS (*)	938	475	97.3%	2,008	-53.3%	894	4.9%	1,936	-51.6%
35 (*)	1,366	1,369	-0.2%	2,421	-43.6%	1,872	-27.0%	2,109	-35.2%
36	1,305	1,396	-6.5%	2,536	-48.5%	1,796	-27.4%	2,223	-41.3%
37	2,142	1,790	19.6%	3,273	-34.6%	3,089	-30.7%	3,139	-31.7%
38	3,102	3,077	0.8%	6,361	-51.2%	4,640	-33.1%	5,988	-48.2%
39 EXPRESS (*)	270	77	250.2%	893	-69.8%	276	-2.4%	855	-68.5%
40	967	765	26.5%	1,772	-45.4%	1,323	-26.9%	1,633	-40.8%
42	531	380	39.6%	820	-35.3%	754	-29.6%	786	-32.5%
46 - LIBERTY CITY CONN. (*)	14	21	-36.9%	41	-66.8%	22	-38.8%	22	-39.2%
51 - FLAGLER MAX	1,904	1,134	67.9%	3,109	-38.8%	2,760	-31.0%	2,901	-34.4%
52	648	605	6.9%	1,261	-48.7%	890	-27.2%	1,171	-44.7%
54	1,712	1,977	-13.4%	2,940	-41.8%	2,361	-27.5%	2,799	-38.8%
55 MARLINS SHUTTLE								58	
56 (*)	191	134	41.8%	354	-46.1%	220	-13.3%	341	-44.1%
57 (*)	293	170	71.9%	433	-32.4%	339	-13.6%	395	-25.8%
62	1,037	1,260	-17.7%	1,815	-42.9%	1,752	-40.8%	1,700	-39.0%
71 (*)	404	278	45.2%	711	-43.1%	459	-12.0%	561	-27.9%
72 (*)	387	366	5.6%	781	-50.5%	458	-15.5%	698	-44.6%

(†) In this table and those which follow, "YOY" stands for "year-over-year", "MOM" for "month-over-month" and "YO2Y" for "year over two years", i.e., current month vs 12 months prior, one month prior, and 24 months prior, respectively.

(*) Contracted routes

(**) Due to effects from the SARS-CoV-2 pandemic; rides were fare-free beginning March 22, 2020; fares were reinstated on June 1, 2021, in part accounting for the drop in ridership from May 2021.

METROBUS AVERAGE WEEKDAY BOARDINGS BY ROUTE

Route <i>weekdays</i>	Average Weekday	Average Weekday	Percent Change	Average Weekday	Percent Change	Average Weekday	Percent Change	Average Weekday	Percent Change
	Jun-21	Jun-20	YOY	Feb-20	Current vs Feb-20	May-21	MOM	Jun-19	YO2Y
73	1,317	799	64.8%	2,124	-38.0%	1,656	-20.5%	2,082	-36.7%
75	642	515	24.5%	1,429	-55.1%	1,232	-47.9%	1,091	-41.2%
77	4,689	3,703	26.6%	7,129	-34.2%	6,897	-32.0%	6,670	-29.7%
79				361				362	
82 - WESTCHESTER CIRC. (*)	27	28	-6.6%	62	-56.8%	29	-9.2%	51	-47.7%
87	964	708	36.2%	1,499	-35.7%	1,368	-29.5%	1,430	-32.6%
88	1,579	1,129	39.9%	2,076	-24.0%	1,858	-15.0%	1,966	-19.7%
93 - BISCAYNE MAX	1,431	1,446	-1.0%	3,334	-57.1%	1,804	-20.6%	3,075	-53.5%
95 EXPRESS (*)	528	84	526.0%	1,690	-68.7%	420	25.6%	1,830	-71.1%
99	882	746	18.1%	1,473	-40.1%	1,347	-34.6%	1,293	-31.8%
101 - A (*)	132	86	53.6%	177	-25.2%	142	-6.9%	165	-19.6%
102 - B	1,212	832	45.7%	1,778	-31.8%	1,490	-18.6%	1,589	-23.7%
103 - C	182	143	27.2%	463	-60.8%	274	-33.8%	413	-56.0%
104	487	280	73.9%	837	-41.8%	526	-7.3%	784	-37.9%
105 - E	796	646	23.4%	1,287	-38.1%	1,233	-35.4%	1,090	-26.9%
107 - G	992	846	17.3%	1,713	-42.1%	1,235	-19.7%	1,450	-31.6%
108 - H	228	222	2.7%	473	-51.8%	413	-44.8%	424	-46.4%
110 - J	2,164	1,502	44.0%	2,508	-13.7%	2,924	-26.0%	2,441	-11.3%
112 - L	5,772	4,683	23.2%	7,636	-24.4%	8,049	-28.3%	6,933	-16.7%
113 - M	350	355	-1.4%	866	-59.6%	512	-31.7%	780	-55.1%
115 (*)	171	167	2.4%	180	-5.0%	205	-16.4%	139	23.3%
119 - S	6,973	5,160	35.1%	8,970	-22.3%	10,527	-33.8%	8,269	-15.7%
120 - BEACH MAX	4,188	3,276	27.8%	6,667	-37.2%	5,870	-28.7%	5,720	-26.8%
132 TRI-RAIL (DORAL)	13	11	16.1%	16	-14.8%	19	-31.3%	20	-34.8%
135 (*)	679	474	43.1%	1,399	-51.5%	888	-23.5%	1,060	-36.0%
136	73	35	109.8%	126	-42.0%	96	-23.7%	142	-48.5%
137 - WESTDADE CONN.	801	613	30.7%	1,626	-50.7%	1,184	-32.4%	1,568	-48.9%
150 - MIAMI BEACH AIRPORT FLYER (*)	1,347	661	103.8%	1,867	-27.9%	1,473	-8.6%	1,634	-17.6%
155 - BISCAYNE GARDENS CIRCULATOR (*)	21	30	-32.1%	44	-53.5%	28	-27.3%	37	-45.1%
175 - NW MIAMI-DADE EXPRESS				33					
183	1,711	1,822	-6.1%	3,149	-45.7%	2,741	-37.6%	2,761	-38.0%
195 EXPRESS - BROWARD BLVD				372				442	
196 EXPRESS - SHERIDAN ST				383				405	
200 - CUTLER BAY LOCAL	81	92	-11.1%	158	-48.4%	125	-35.0%	154	-47.3%
202 - LITTLE HAITI CONN. (*)	100	90	11.6%	140	-28.2%	119	-15.6%	145	-30.6%
204 KILLIAN KAT				1,071				1,041	

METROBUS AVERAGE WEEKDAY BOARDINGS BY ROUTE

Route <i>weekdays</i>	Average Weekday	Average Weekday	Percent Change	Average Weekday	Percent Change	Average Weekday	Percent Change	Average Weekday	Percent Change
	Jun-21	Jun-20	YOY	Feb-20	Current vs Feb-20	May-21	MOM	Jun-19	YO2Y
207 (7st) - LITTLE HAVANA CIRC	648	912	-29.0%	1,489	-56.5%	931	-30.4%	1,435	-54.9%
208 (8st) - LITTLE HAVANA CIRC	558	867	-35.6%	1,308	-57.3%	897	-37.8%	1,305	-57.2%
210 - SKYLAKE CIRC (*)	275	181	52.1%	282	-2.5%	371	-25.9%	281	-2.2%
211 - OVERTOWN CIRC. (*)	27	46	-41.4%	58	-53.1%	31	-12.7%	71	-61.6%
212 - SWEETWATER CIRC. (*)	25	19	31.4%	15	71.6%	27	-7.4%	40	-36.1%
217 - BUNCHE PARK CIRC (*)	45	54	-16.5%	97	-53.6%	61	-25.9%	54	-16.5%
238 EAST/WEST CONN.	278	76	266.8%	449	-38.0%	390	-28.7%	473	-41.2%
246 - NIGHT OWL	10	4	150.4%	94	-89.7%	80	-88.0%	90	-89.4%
248 - PRINCETON CIRCULATOR (*)	79	80	-2.1%	135	-41.6%	86	-8.5%	111	-29.1%
252 - CORAL REEF MAX	402	245	63.6%	851	-52.8%	577	-30.4%	791	-49.2%
254 - BROWNSVILLE CIRC. (*)	46	37	25.5%	19	140.3%	10	373.2%	13	246.9%
267 - LUDLAM LIMITED (*)	96	71	36.3%	149	-35.4%	101	-4.7%	130	-26.0%
272 SUNSET KAT (*)	278	213	30.5%	550	-49.5%	292	-5.0%	503	-44.8%
277 - 7th AVENUE MAX	302	331	-8.9%	683	-55.8%	474	-36.3%	547	-44.8%
286 - NORTH POINTE CIRC. (*)	32	36	-11.8%	97	-67.1%	35	-8.4%	66	-51.7%
287 - SAGA BAY MAX	146	97	50.4%	358	-59.1%	184	-20.6%	326	-55.1%
288 - KENDALL CRUISER				762				756	
295 EXPRESS - BROWARD BLVD - CIVIC CENTER				233				244	
296 EXPRESS - SHERIDAN ST - CIVIC CENTER				215				235	
297-27th AVENUE ORANGE MAX	548	669	-18.1%	1,356	-59.6%	854	-35.9%	1,142	-52.0%
301 DADE-MONROE EXPRESS(*)	964	635	51.8%	841	14.6%	962	0.2%	863	11.7%
302 CARD SOUND EXPRESS(*)	75	42	80.9%	86	-12.7%	78	-2.9%	75	0.0%
344 (*)	66	50	30.7%	96	-31.4%	78	-16.0%	81	-19.0%
500				81		12		41	
836 EXPRESS	73					90	-19.5%		
GREEN HILLS SHUTTLE (*)	18	6	212.9%	9	102.8%	38	-52.3%	3	544.1%
KINGS CREEK SHUTTLE (*)	18	4	329.4%	13	40.4%	12	52.1%	17	10.6%
SIERRALAKES SHUTTLE (*)	16	20	-20.3%	45	-65.0%	43	-62.9%	22	-27.6%
ROBERT SHARP SHUTTLE (*)	21	12	71.7%	10	116.8%	20	4.3%	5	333.7%
AHEPA SHUTTLE (*)	22	20	8.9%	21	3.6%	18	19.4%	24	-9.5%
Total	100,645	81,597	23.3%	167,711	-40.0%	140,703	-28.5%	152,277	-33.9%

(*) The following routes are entirely operated under contract: 1, 29, 34, 35, 39, 46, 56, 57, 71, 72, 82, 95, 101-A, 115, 135, 150, 155, 202, 210, 211, 212, 217, 248, 254, 267, 272, 286, 301, 302 and 344, although some supplemental runs may be performed by DTPW. Conversely, a few routes that are nominally run by DTPW may have a few supplemental runs operated by contractors; Dade-Monroe routes 301 and 302 as well as six Lifeline routes are also under contracted operation.

(1) Includes shuttles and those routes which were not run both years.

(2) Several express routes were suspended beginning at the end of March 2020, due to the SARS-CoV-2 pandemic, while other routes had alignment and schedule modifications made to them, in an ongoing effort to optimize service delivery.

METROBUS AVERAGE SATURDAY BOARDINGS BY ROUTE

Route	Average Saturday	Average Saturday	Percent Change	Average Saturday	Percent Change	Average Saturday	Percent Change	Average Saturday	Percent Change
Saturdays	Jun-21	Jun-20	YOY	Feb-20	Current vs Feb-20	May-21	MOM	Jun-19	YO2Y
1 (*)	186	176	6.0%	215	-13.5%	214	-13.0%	234	-20.6%
2	946	1,026	-7.8%	1,616	-41.5%	1,094	-13.6%	1,310	-27.8%
3	4,066	2,778	46.4%	5,229	-22.2%	5,130	-20.7%	5,086	-20.1%
7	1,308	892	46.7%	1,887	-30.7%	1,507	-13.3%	1,821	-28.2%
8	1,969	1,288	52.9%	2,027	-2.9%	2,569	-23.4%	2,116	-7.0%
9	2,539	2,240	13.3%	3,034	-16.3%	3,523	-27.9%	2,961	-14.3%
10	1,048	1,455	-28.0%	1,896	-44.7%	1,661	-36.9%	1,624	-35.5%
11	3,651	3,491	4.6%	5,182	-29.6%	4,514	-19.1%	5,498	-33.6%
16	1,021	945	8.0%	1,566	-34.8%	1,422	-28.2%	1,358	-24.8%
17	1,579	1,615	-2.2%	2,363	-33.2%	2,416	-34.6%	2,489	-36.6%
22	1,340	1,152	16.3%	2,084	-35.7%	1,849	-27.5%	1,927	-30.5%
24 - Coral Way Limited	741	759	-2.3%	1,165	-36.4%	1,281	-42.2%	1,148	-35.5%
27	2,925	2,434	20.2%	4,034	-27.5%	4,037	-27.5%	3,950	-25.9%
31 - BUSWAY LOCAL	623	655	-4.8%	896	-30.4%	646	-3.6%	911	-31.6%
32	698	799	-12.7%	1,029	-32.2%	1,197	-41.7%	1,019	-31.5%
33	685	566	20.9%	951	-28.0%	856	-20.0%	930	-26.4%
35 (*)	896	916	-2.2%	1,372	-34.7%	1,204	-25.6%	1,141	-21.5%
36	879	1,089	-19.3%	1,289	-31.8%	1,430	-38.6%	1,199	-26.7%
37	1,330	1,495	-11.1%	2,090	-36.4%	1,969	-32.5%	1,894	-29.8%
38	2,435	2,554	-4.7%	4,715	-48.4%	3,660	-33.5%	4,463	-45.5%
40	473	307	53.9%	655	-27.8%	659	-28.3%	663	-28.7%
42	418	399	4.8%	552	-24.3%	562	-25.7%	531	-21.3%
52	410	407	0.8%	686	-40.3%	681	-39.9%	629	-34.8%
54	1,267	1,474	-14.0%	1,727	-26.6%	1,668	-24.1%	1,707	-25.8%
55 MARLINS SHUTTLE								112	
62	863	1,118	-22.8%	1,343	-35.8%	1,392	-38.0%	1,258	-31.4%
71 (*)	165	111	48.8%	252	-34.6%	230	-28.5%	205	-19.6%
72 (*)	245	220	11.4%	350	-29.8%	259	-5.5%	328	-25.2%
73	705	385	83.1%	860	-18.1%	945	-25.4%	916	-23.1%
75	330	267	23.7%	468	-29.5%	541	-39.0%	407	-19.1%
77	2,998	2,043	46.8%	4,197	-28.6%	3,532	-15.1%	3,947	-24.0%
87	314	225	39.3%	402	-22.1%	465	-32.6%	462	-32.2%
88	1,009	776	30.1%	1,620	-37.7%	1,357	-25.6%	1,598	-36.8%
99	573	584	-2.0%	849	-32.5%	990	-42.2%	859	-33.3%

METROBUS AVERAGE SATURDAY BOARDINGS BY ROUTE

Route	Average Saturday	Average Saturday	Percent Change	Average Saturday	Percent Change	Average Saturday	Percent Change	Average Saturday	Percent Change
	Jun-21	Jun-20	YOY	Feb-20	Current vs Feb-20	May-21	MOM	Jun-19	YO2Y
Saturdays									
101 - A (*)	64	40	58.4%	71	-10.0%	72	-11.0%	65	-1.6%
102 - B	652	302	116.2%	851	-23.4%	917	-28.8%	784	-16.8%
103 - C	124	253	-50.9%	315	-60.5%	300	-58.6%	255	-51.3%
104	262	152	72.7%	468	-44.1%	289	-9.4%	492	-46.7%
105 - E	427	392	8.8%	619	-31.1%	837	-49.0%	605	-29.5%
107 - G	700	593	18.1%	1,066	-34.4%	1,108	-36.8%	975	-28.3%
108 - H	254	278	-8.6%	372	-31.7%	470	-45.9%	354	-28.3%
110 - J	1,231	1,140	7.9%	1,952	-37.0%	2,103	-41.5%	1,817	-32.3%
112 - L	4,514	3,873	16.6%	5,667	-20.4%	6,023	-25.1%	5,750	-21.5%
113 - M	175	243	-28.0%	503	-65.3%	360	-51.6%	458	-61.9%
115 (*)	217	119	82.3%	82	163.4%	113	91.3%	75	188.7%
119 - S	5,600	3,759	49.0%	6,861	-18.4%	8,014	-30.1%	6,435	-13.0%
120 - BEACH MAX	2,471	2,663	-7.2%	4,744	-47.9%	4,319	-42.8%	4,307	-42.6%
135 (*)	304	440	-31.1%	539	-43.7%	367	-17.3%	470	-35.4%
137 - WEST DADE CONN.	712	642	10.9%	1,027	-30.7%	875	-18.7%	1,039	-31.5%
150 - MIAMI BEACH AIRPORT FLYER (*)	1,244	677	83.7%	1,604	-22.5%	1,498	-17.0%	1,502	-17.2%
183	1,343	811	65.6%	1,790	-25.0%	1,872	-28.3%	1,703	-21.2%
200 - CUTLER BAY LOCAL	64	70	-9.3%	119	-46.7%	114	-44.5%	126	-49.8%
202 - LITTLE HAITI CONN. (*)	57	42	36.1%	50	12.5%	70	-19.3%	54	4.6%
207 (7st) - LITTLE HAVANA CIRC	590	443	33.2%	1,032	-42.9%	898	-34.4%	903	-34.7%
208 (8st) - LITTLE HAVANA CIRC	547	624	-12.4%	1,044	-47.6%	1,061	-48.4%	1,046	-47.7%
210 - SKYLAKE CIRC (*)	136	102	34.0%	165	-17.6%	132	3.2%	193	-29.5%
246 - NIGHT OWL	4			84	-95.3%	73	-94.6%	90	-95.5%
252 - CORAL REEF MAX	203	145	39.8%	302	-32.8%	223	-9.1%	305	-33.5%
286 - NORTH POINTE CIRC. (*)	29	26	11.5%	41	-28.9%	26	9.8%	60	-51.5%
301 DADE-MONROE EXPRESS (*)	980	706	38.9%	801	22.4%	961	2.0%	768	27.6%
302 CARD SOUND EXPRESS (*)	73	30	140.5%	57	28.5%	83	-12.8%	58	26.3%
338 - WEEKEND EXPRESS	137	89	53.2%	237	-42.2%	173	-21.1%	223	-38.6%
500	4			70	-94.3%	38	-89.5%	58	-93.1%
12/21 WEEKEND INTERL.	1,399	1,997	-29.9%	2,528	-44.7%	2,681	-47.8%	2,423	-42.3%
FEDERATION GARDENSSHUTTLE (*)	17	33	-50.5%	28	-41.9%	20	-16.7%	24	-29.8%
Total	65,182	57,348	13.7%	93,742	-30.5%	91,602	-28.8%	90,161	-27.7%

METROBUS AVERAGE SUNDAY BOARDINGS BY ROUTE

Route	Average Sunday	Average Sunday	Percent Change	Average Sunday	Percent Change	Average Sunday	Percent Change	Average Sunday	Percent Change
	Jun-21	Jun-20	YOY	Feb-20	Current vs Feb-20	May-21	MOM	Jun-19	YO2Y
Sundays									
1 (*)	128	144	-10.9%	201	-36.1%	153	-16.3%	179	-28.3%
2	780	565	38.0%	1,335	-41.6%	896	-13.0%	1,004	-22.4%
3	3,296	2,391	37.9%	4,353	-24.3%	4,571	-27.9%	3,856	-14.5%
7	1,005	745	34.8%	1,654	-39.3%	1,037	-3.1%	1,316	-23.7%
8	1,066	1,065	0.1%	1,746	-38.9%	1,610	-33.8%	1,513	-29.5%
9	2,173	1,554	39.8%	2,549	-14.8%	2,712	-19.9%	2,180	-0.3%
10	983	911	7.9%	1,441	-31.8%	1,353	-27.3%	1,240	-20.7%
11	2,270	2,527	-10.2%	3,917	-42.0%	2,867	-20.8%	3,634	-37.5%
16	613	691	-11.3%	997	-38.5%	776	-21.0%	796	-23.0%
17	1,040	1,233	-15.6%	1,833	-43.2%	1,562	-33.4%	1,584	-34.3%
22	887	1,004	-11.6%	1,548	-42.7%	1,665	-46.7%	1,363	-34.9%
24 - Coral Way Limited	563	599	-6.1%	905	-37.8%	853	-34.0%	844	-33.4%
27	1,975	2,131	-7.3%	2,918	-32.3%	2,810	-29.7%	2,601	-24.1%
31 - BUSWAY LOCAL	368	471	-21.9%	715	-48.5%	480	-23.3%	610	-39.7%
32	333	558	-40.4%	772	-56.9%	647	-48.6%	676	-50.8%
33	346	418	-17.4%	607	-43.1%	464	-25.5%	516	-33.0%
35 (*)	651	637	2.3%	942	-30.9%	946	-31.2%	848	-23.2%
36	729	1,125	-35.3%	1,111	-34.4%	1,145	-36.4%	935	-22.1%
37	1,005	1,033	-2.7%	1,739	-42.2%	1,497	-32.9%	1,482	-32.2%
38	2,353	2,608	-9.8%	4,147	-43.3%	3,229	-27.1%	3,777	-37.7%
40	298	276	8.1%	447	-33.4%	346	-13.8%	443	-32.7%
42	229	244	-6.1%	416	-45.0%	380	-39.9%	311	-26.4%
52	304	294	3.3%	466	-34.9%	433	-29.8%	439	-30.8%
54	755	960	-21.3%	1,171	-35.5%	1,173	-35.6%	1,028	-26.5%
55 MARLINS SHUTTLE								130	
62	456	712	-36.0%	891	-48.8%	833	-45.3%	707	-35.5%
71 (*)	106	107	-0.5%	162	-34.6%	155	-31.6%	108	-1.5%
72 (*)	167	139	20.2%	265	-37.0%	202	-17.3%	233	-28.6%
73	233	263	-11.4%	495	-53.0%	380	-38.7%	406	-42.7%
75	193	251	-22.9%	271	-28.6%	334	-42.2%	199	-2.7%
77	2,193	1,807	21.3%	2,815	-22.1%	3,181	-31.1%	2,608	-15.9%
87	215	175	23.0%	319	-32.5%	278	-22.4%	277	-22.3%
88	679	665	2.2%	1,286	-47.2%	866	-21.5%	1,114	-39.1%
99	442	381	16.0%	658	-32.8%	662	-33.1%	529	-16.4%

METROBUS AVERAGE SUNDAY BOARDINGS BY ROUTE

Route	Average Sunday	Average Sunday	Percent Change	Average Sunday	Percent Change	Average Sunday	Percent Change	Average Sunday	Percent Change
	Sundays Jun-21	Jun-20	YOY	Feb-20	Current vs Feb-20	May-21	MOM	Jun-19	YO2Y
101 - A (*)	38	28	35.7%	56	-31.5%	57	-32.7%	40	-5.9%
102 - B	488	400	22.0%	717	-32.0%	731	-33.3%	702	-30.6%
103 - C	92	145	-36.5%	212	-56.4%	225	-59.0%	167	-44.7%
104	137	87	56.4%	317	-56.9%	193	-29.4%	298	-54.2%
105 - E	445	425	4.7%	616	-27.7%	673	-33.8%	532	-16.2%
107 - G	589	558	5.5%	895	-34.2%	756	-22.1%	717	-17.9%
108 - H	218	252	-13.3%	328	-33.6%	349	-37.5%	317	-31.2%
110 - J	1,012	895	13.1%	1,638	-38.2%	1,497	-32.4%	1,354	-25.2%
112 - L	3,535	3,092	14.3%	4,804	-26.4%	4,420	-20.0%	4,147	-14.8%
113 - M	241	181	32.9%	431	-44.1%	322	-25.3%	364	-34.0%
115 (*)	184	98	88.7%	80	130.0%	101	82.8%	65	184.0%
119 - S	5,180	4,608	12.4%	7,141	-27.5%	7,516	-31.1%	6,290	-17.7%
120 - BEACH MAX	2,050	1,747	17.3%	3,469	-40.9%	3,049	-32.8%	2,873	-28.6%
135 (*)	210	328	-36.1%	349	-40.0%	295	-29.0%	322	-35.0%
137 - WEST DADE CONN.	521	550	-5.3%	879	-40.8%	643	-19.0%	769	-32.3%
150 - MIAMI BEACH AIRPORT FLYER (*)	1,405	725	93.8%	1,574	-10.7%	1,509	-6.9%	1,386	1.4%
183	941	850	10.7%	1,413	-33.4%	1,414	-33.4%	1,210	-22.2%
200 - CUTLER BAY LOCAL	41	33	24.6%	59	-30.8%	68	-40.2%	45	-9.2%
202 - LITTLE HAITI CONN. (*)	57	51	10.7%	39	45.5%	65	-12.7%	48	18.2%
207 (7st) - LITTLE HAVANA CIRC	496	365	35.8%	796	-37.7%	651	-23.8%	630	-21.3%
208 (8st) - LITTLE HAVANA CIRC	514	534	-3.7%	911	-43.6%	741	-30.6%	705	-27.1%
210 - SKYLAKE CIRC (*)	104	106	-1.9%	143	-27.3%	153	-32.0%	152	-31.5%
246 - NIGHT OWL		3		87		78		93	
252 - CORAL REEF MAX	155	136	13.4%	199	-22.3%	204	-24.3%	228	-32.1%
301 DADE-MONROE EXPRESS(*)	959	581	65.1%	751	27.7%	950	1.0%	816	17.5%
302 CARD SOUND EXPRESS(*)	45	30	49.6%	57	-20.6%	49	-8.0%	53	-14.6%
338 - WEEKEND EXPRESS	153	83	85.2%	252	-39.4%	151	1.3%	257	-40.5%
500	1	2	-50.0%	83	-98.8%	9	-89.3%	36	-97.3%
12/21 WEEKEND INTERL.	1,319	1,664	-20.7%	2,048	-35.6%	1,589	-17.0%	1,852	-28.8%
Total	49,957	47,236	5.8%	75,428	-33.8%	68,946	-27.5%	65,953	-24.3%

METROBUS TOTAL MONTHLY BOARDINGS BY ROUTE

Route	Total Month	Total Month	Percent Change	Total Month	Percent Change	Total Month	Percent Change	Total Month	Percent Change
	Jun-21	Jun-20	YOY	Feb-20	Current vs Feb-20	May-21	MOM	Jun-19	YO2Y
Monthly Total									
1 (*)	4,371	4,701	-7.0%	5,558	-21.4%	6,048	-27.7%	7,648	-42.8%
2	44,986	36,318	23.9%	75,463	-40.4%	53,615	-16.1%	53,652	-16.2%
3	118,827	70,081	69.6%	146,294	-18.8%	152,086	-21.9%	135,253	-12.1%
7	56,434	42,280	33.5%	86,077	-34.4%	62,357	-9.5%	75,040	-24.8%
8	82,363	49,039	68.0%	95,295	-13.6%	114,620	-28.1%	89,534	-8.0%
9	110,657	79,515	39.2%	135,924	-18.6%	154,354	-28.3%	120,292	-8.0%
10	35,704	28,228	26.5%	64,874	-45.0%	54,112	-34.0%	54,778	-34.8%
11	141,114	100,585	40.3%	187,425	-24.7%	181,561	-22.3%	183,044	-22.9%
12	33,088	36,184	-8.6%	55,585	-40.5%	42,343	-21.9%	48,073	-31.2%
16	27,444	24,802	10.7%	49,061	-44.1%	40,576	-32.4%	44,393	-38.2%
17	54,654	63,160	-13.5%	96,715	-43.5%	80,633	-32.2%	86,405	-36.7%
19	14,822	13,755	7.8%	30,847	-51.9%	25,184	-41.1%	26,773	-44.6%
21	19,401	30,614	-36.6%	36,341	-46.6%	35,396	-45.2%	35,265	-45.0%
22	51,721	44,798	15.5%	89,404	-42.1%	76,556	-32.4%	82,736	-37.5%
24 - Coral Way Limited	23,456	25,667	-8.6%	36,237	-35.3%	40,710	-42.4%	41,693	-43.7%
27	110,347	98,211	12.4%	171,282	-35.6%	159,244	-30.7%	154,898	-28.8%
29 (*)	6,966	5,512	26.4%	10,684	-34.8%	7,494	-7.0%	11,906	-41.5%
31 - BUSWAY LOCAL	15,433	16,731	-7.8%	29,125	-47.0%	20,753	-25.6%	28,708	-46.2%
32	30,453	36,726	-17.1%	56,027	-45.6%	43,481	-30.0%	50,790	-40.0%
33	22,817	19,206	18.8%	40,918	-44.2%	32,441	-29.7%	35,926	-36.5%
34 EXPRESS (*)	20,625	10,456	97.3%	40,159	-48.6%	17,877	15.4%	38,721	-46.7%
35 (*)	36,243	36,331	-0.2%	59,041	-38.6%	49,127	-26.2%	52,122	-30.5%
36	35,136	39,562	-11.2%	61,606	-43.0%	49,945	-29.7%	55,134	-36.3%
37	56,465	49,500	14.1%	82,870	-31.9%	80,620	-30.0%	79,655	-29.1%
38	87,397	88,336	-1.1%	167,379	-47.8%	130,467	-33.0%	160,969	-45.7%
39 EXPRESS (*)	5,933	154	3752.6%	17,853	-66.8%	5,526	7.4%	17,103	-65.3%
40	24,359	19,151	27.2%	40,497	-39.8%	31,838	-23.5%	38,184	-36.2%
42	14,258	10,927	30.5%	20,825	-31.5%	20,170	-29.3%	19,929	-28.5%
46 - LIBERTY CITY CONN. (*)	297	471	-36.9%	814	-63.5%	441	-32.7%	444	-33.1%
51 - FLAGLER MAX	41,888	24,946	67.9%	62,186	-32.6%	55,206	-24.1%	58,013	-27.8%
52	17,099	16,122	6.1%	30,522	-44.0%	23,797	-28.1%	28,766	-40.6%
54	45,753	53,218	-14.0%	72,125	-36.6%	62,588	-26.9%	69,643	-34.3%
55 MARLINS SHUTTLE								1,250	
56 (*)	4,194	2,958	41.8%	7,071	-40.7%	4,400	-4.7%	6,824	-38.5%
57 (*)	6,444	3,749	71.9%	8,665	-25.6%	6,777	-4.9%	7,893	-18.4%
62	28,081	35,041	-19.9%	46,582	-39.7%	46,992	-40.2%	43,831	-35.9%
71 (*)	9,973	6,993	42.6%	16,118	-38.1%	11,268	-11.5%	12,773	-21.9%
72 (*)	10,159	9,498	7.0%	18,433	-44.9%	11,662	-12.9%	16,775	-39.4%

METROBUS TOTAL MONTHLY BOARDINGS BY ROUTE

Route	Total Month	Total Month	Percent Change	Total Month	Percent Change	Total Month	Percent Change	Total Month	Percent Change
	Jun-21	Jun-20	YOY	Feb-20	Current vs Feb-20	May-21	MOM	Jun-19	YO2Y
Monthly Total									
73	32,723	20,172	62.2%	48,767	-32.9%	40,114	-18.4%	48,250	-32.2%
75	16,205	13,404	20.9%	31,994	-49.3%	29,354	-44.8%	24,856	-34.8%
77	123,918	96,859	27.9%	174,833	-29.1%	174,673	-29.1%	166,168	-25.4%
79				7,228				7,231	
82 - WESTCHESTER CIRC. (*)	683	749	-8.8%	1,482	-53.9%	820	-16.7%	1,210	-43.6%
87	23,330	17,180	35.8%	33,273	-29.9%	31,342	-25.6%	32,300	-27.8%
88	41,484	30,590	35.6%	54,772	-24.3%	49,139	-15.6%	52,880	-21.6%
93 - BISCAYNE MAX	31,492	31,804	-1.0%	66,684	-52.8%	36,076	-12.7%	61,509	-48.8%
95 EXPRESS (*)	11,618	1,856	526.0%	33,796	-65.6%	8,406	38.2%	36,604	-68.3%
99	23,454	20,279	15.7%	36,325	-35.4%	35,861	-34.6%	32,797	-28.5%
101 - A (*)	3,318	2,168	53.0%	4,114	-19.3%	3,540	-6.3%	3,817	-13.1%
102 - B	31,228	21,109	47.9%	42,683	-26.8%	38,764	-19.4%	39,211	-20.4%
103 - C	4,863	4,736	2.7%	11,682	-58.4%	8,338	-41.7%	10,360	-53.1%
104	12,313	7,119	73.0%	20,351	-39.5%	13,118	-6.1%	19,632	-37.3%
105 - E	21,009	17,472	20.2%	31,302	-32.9%	32,884	-36.1%	27,484	-23.6%
107 - G	26,974	23,212	16.2%	43,178	-37.5%	34,768	-22.4%	37,471	-28.0%
108 - H	6,897	6,997	-1.4%	12,624	-45.4%	12,696	-45.7%	11,846	-41.8%
110 - J	56,573	41,187	37.4%	66,481	-14.9%	77,986	-27.5%	64,666	-12.5%
112 - L	159,178	130,891	21.6%	200,268	-20.5%	217,619	-26.9%	188,143	-15.4%
113 - M	9,352	9,494	-1.5%	21,548	-56.6%	13,975	-33.1%	19,701	-52.5%
115 (*)	5,369	4,543	18.2%	4,334	23.9%	5,265	2.0%	3,477	54.4%
119 - S	196,512	146,983	33.7%	242,257	-18.9%	295,703	-33.5%	228,998	-14.2%
120 - BEACH MAX	110,224	89,721	22.9%	170,942	-35.5%	157,296	-29.9%	150,300	-26.7%
132 TRI-RAIL (DORAL)	226	252	-10.3%	312	-27.6%	387	-41.6%	408	-44.6%
135 (*)	16,983	13,504	25.8%	32,067	-47.0%	21,359	-20.5%	25,155	-32.5%
136	1,609	767	109.8%	2,524	-36.3%	1,916	-16.0%	2,840	-43.3%
137 - WEST DADE CONN.	22,549	18,243	23.6%	41,167	-45.2%	31,915	-29.3%	40,392	-44.2%
150 - MIAMI BEACH AIRPORT FLYER (*)	40,223	20,147	99.6%	51,651	-22.1%	46,005	-12.6%	47,123	-14.6%
155 - BISCAYNE GARDENS CIRCULATOR (*)	451	664	-32.1%	881	-48.8%	564	-20.0%	747	-39.6%
175 - NW MIAMI-DADE EXPRESS				661					
183	46,767	46,723	0.1%	77,570	-39.7%	72,665	-35.6%	69,787	-33.0%
195 EXPRESS - BROWARD BLVD		0		7,441				8,844	
196 EXPRESS - SHERIDAN ST		0		7,658				8,092	
200 - CUTLER BAY LOCAL	2,043	2,424	-15.7%	3,984	-48.7%	3,347	-39.0%	3,941	-48.2%
202 - LITTLE HAITI CONN. (*)	2,659	2,347	13.3%	3,200	-16.9%	3,115	-14.6%	3,401	-21.8%
204 KILLIAN KAT				21,418				20,820	

METROBUS TOTAL MONTHLY BOARDINGS BY ROUTE

Route	Total Month	Total Month	Percent Change	Total Month	Percent Change	Total Month	Percent Change	Total Month	Percent Change
	Jun-21	Jun-20	YOY	Feb-20	Current vs Feb-20	May-21	MOM	Jun-19	YO2Y
Monthly Total									
207 (7st) - LITTLE HAVANA CIRC	18,591	23,289	-20.2%	38,127	-51.2%	27,015	-31.2%	36,362	-48.9%
208 (8st) - LITTLE HAVANA CIRC	16,526	23,712	-30.3%	35,018	-52.8%	27,688	-40.3%	34,861	-52.6%
210 - SKYLAKE CIRC (*)	7,004	4,805	45.8%	7,033	-0.4%	8,990	-22.1%	7,342	-4.6%
211 - OVERTOWN CIRC. (*)	598	1,021	-41.4%	1,159	-48.4%	623	-4.0%	1,415	-57.7%
212 - SWEETWATER CIRC. (*)	557	424	31.4%	295	88.8%	547	1.8%	793	-29.8%
217 - BUNCHE PARK CIRC (*)	995	1,191	-16.5%	1,949	-48.9%	1,221	-18.5%	1,083	-8.1%
238 EAST/WEST CONN.	6,125	1,670	266.8%	8,987	-31.8%	7,809	-21.6%	9,469	-35.3%
246 - NIGHT OWL	52	33	57.6%	2,641	-98.0%	2,433	-97.9%	2,719	-98.1%
248 - PRINCETON CIRCULATOR (*)	1,729	1,766	-2.1%	2,690	-35.7%	1,718	0.6%	2,217	-22.0%
252 - CORAL REEF MAX	10,264	6,526	57.3%	19,325	-46.9%	13,874	-26.0%	18,474	-44.4%
254 - BROWNSVILLE CIRC. (*)	1,015	809	25.5%	384	164.3%	195	420.5%	266	281.6%
267 - LUDLAM LIMITED (*)	2,116	1,553	36.3%	2,978	-28.9%	2,018	4.9%	2,601	-18.6%
272 SUNSET KAT (*)	6,107	4,681	30.5%	11,004	-44.5%	5,846	4.5%	10,058	-39.3%
277 - 7th AVENUE MAX	6,642	7,292	-8.9%	13,669	-51.4%	9,486	-30.0%	10,948	-39.3%
286 - NORTH POINTE CIRC. (*)	819	901	-9.1%	2,145	-61.8%	830	-1.3%	1,621	-49.5%
287 - SAGA BAY MAX	3,219	2,141	50.4%	7,160	-55.0%	3,687	-12.7%	6,519	-50.6%
288 - KENDALL CRUISER				15,249				15,120	
295 EXPRESS - BROWARD BLVD - CIVIC CENTER				4,668				4,870	
296 EXPRESS - SHERIDAN ST - CIVIC CENTER				4,297				4,692	
297-27th AVENUE ORANGE MAX	12,052	14,717	-18.1%	27,125	-55.6%	17,080	-29.4%	22,831	-47.2%
301 DADE-MONROE EXPRESS(*)	28,968	19,118	51.5%	23,838	21.5%	29,744	-2.6%	25,185	15.0%
302 CARD SOUND EXPRESS(*)	2,129	1,158	83.9%	2,236	-4.8%	2,264	-6.0%	2,059	3.4%
338 - WEEKEND EXPRESS	1,158	687	68.6%	2,191	-47.1%	1,621	-28.6%	2,398	-51.7%
344 (*)	1,448	1,108	30.7%	1,919	-24.5%	1,568	-7.7%	1,625	-10.9%
500	5	2	150.0%	2,301	-99.8%	442	-98.9%	1,284	-99.6%
836 EXPRESS	1,525					1,805	-15.5%		
12/21 WEEKEND INTERL.	10,873	14,641	-25.7%	20,830	-47.8%	22,943	-52.6%	21,376	-49.1%
GREEN HILLS SHUTTLE (*)	73	35	108.6%	36	102.8%	153	-52.3%	17	329.4%
KINGS CREEK SHUTTLE (*)	73	17	329.4%	52	40.4%	48	52.1%	66	10.6%
SIERRALAKES SHUTTLE (*)	63	79	-20.3%	180	-65.0%	170	-62.9%	87	-27.6%
ROBERT SHARP SHUTTLE (*)	103	48	114.6%	38	171.1%	79	30.4%	19	442.1%
AHEPA SHUTTLE (*)	86	79	8.9%	83	3.6%	72	19.4%	95	-9.5%
FEDERATION GARDENSSHUTTLE (*)	66	100	-34.0%	142	-53.5%	99	-33.3%	94	-29.8%
Total	2,672,570	2,210,725	20.9%	4,123,083	-35.2%	3,683,343	-27.4%	3,823,863	-30.1%

METROBUS HOLIDAY BOARDINGS BY ROUTE Juneteenth (6/21/21)

ROUTES	Juneteenth		Pct Delta	ROUTES	Juneteenth		Pct Delta	ROUTES	Juneteenth		Pct Delta
	2020	2021			2020	2021			2020	2021	
1		137		57		282		200		77	
2		1,568		62		1,201		202		61	
3		4,769		71		400		207		566	
7		2,043		72		418		208		612	
8		3,452		73		1,331		210		305	
9		4,299		75		574		211		31	
10		1,395		77		5,275		212		30	
11		5,326		82		30		217		43	
12		1,775		87		926		238		316	
16		945		88		1,661		246		2	
17		1,576		93		1,422		248		63	
19		775		95		403		252		430	
21		955		99		815		254		50	
22		1,917		101		105		267		86	
24		980		102		1,146		272		268	
27		4,364		103		253		277		306	
29		313		104		605		286		28	
31		391		105		756		287		118	
32		1,274		107		1,175		297		513	
33		703		108		201		301		950	
34		902		110		2,417		302		65	
35		1,607		112		5,695		344		60	
36		1,369		113		344					
37		2,427		115		149					
38		3,201		119		6,967					
39		191		120		4,926					
40		1,005		132		26					
42		517		135		680					
46		9		136		63					
51		1,900		137		863					
52		629		150		1,413					
54		1,584		155		26					
56		159		183		1,644		Total		103,629	

YEAR-OVER-YEAR BUS RIDERSHIP BY ROUTE SERVICE TYPE

Boardings by Service Type and Route	Average Weekday	Average Weekday	Percent Change	Average Saturday	Average Saturday	Percent Change	Average Sunday	Average Sunday	Percent Change	Total Monthly	Total Monthly	Percent Change
	Jun-21	Jun-20	21 vs 20	Jun-21	Jun-20	21 vs 20	Jun-21	Jun-20	21 vs 20	Jun-21	Jun-20	21 vs 20
Express Routes (1)												
34 EXPRESS (*)	938	475	97.3%							20,625	10,456	97.3%
39 EXPRESS (*)	270	77	250.2%							5,933	154	3752.6%
95-EXPRESS (*)	528	84	526.0%							11,618	1,856	526.0%
150-MIAMI BEACH AIRPORT FLYER (*)	1,347	661	103.8%	1,244	677	83.7%	1,405	725	93.8%	40,223	20,147	99.6%
175 - NW MIAMI-DADE EXPRESS												
195 EXPRESS - BROWARD BLVD												
196 EXPRESS - SHERIDAN ST												
295 EXPRESS - BROWARD BLVD - CIVIC CENTER												
296 EXPRESS - SHERIDAN ST - CIVIC CENTER												
204 KAT-KILLIAN												
288 KENDALL CRUISER												
338 - WEEKEND EXPRESS				137	89	53.2%	153	83	85.2%	1,158	687	68.6%
836 EXPRESS	73									1,525		
Subtotal Express Routes	3,155	1,298	143.1%	1,380	766	80.1%	1,558	808	92.9%	81,082	33,300	143.5%
Percentage of All Bus Routes	3.1%	1.6%		2.1%	1.3%		3.1%	1.7%		3.0%	1.5%	
Contracted Regular & Circulator Routes												
1	142	156	-9.0%	186	176	6.0%	128	144	-10.9%	4,371	4,701	-7.0%
29	317	251	26.4%							6,966	5,512	26.4%
35	1,366	1,369	-0.2%	896	916	-2.2%	651	637	2.3%	36,243	36,331	-0.2%
46 - LIBERTY CITY CONN.	14	21	-36.9%							297	471	-36.9%
56	191	134	41.8%							4,194	2,958	41.8%
57	293	170	71.9%							6,444	3,749	71.9%
71	404	278	45.2%	165	111	48.8%	106	107	-0.5%	9,973	6,993	42.6%
72	387	366	5.6%	245	220	11.4%	167	139	20.2%	10,159	9,498	7.0%
82 - WESTCHESTER CIRC	27	28	-6.6%	25	31					683	749	-8.8%
101 - A	132	86	53.6%	64	40	58.4%	38	28	35.7%	3,318	2,168	53.0%
115	171	167	2.4%	217	119	82.3%	184	98	88.7%	5,369	4,543	18.2%
135	679	474	43.1%	304	440					16,983	13,504	25.8%
155 - BISCAYNE GARDENS CIRC	21	30	-32.1%							451	664	-32.1%
202 - LITTLE HAITI CONN.	100	90	11.6%	57	42	36.1%	57	51	10.7%	2,659	2,347	13.3%
210 - SKYLAKE CIRC	275	181	52.1%	136	102	34.0%	104	106	-1.9%	7,004	4,805	45.8%
211-OVERTOWN CIRC	27	46	-41.4%							598	1,021	-41.4%
212-SWEETWATER CIRC	25	19	31.4%							557	424	31.4%
217 - BUNCHE PARK CIRC	45	54	-16.5%							995	1,191	-16.5%
248 - PRINCETON CIRCULATOR	79	80	-2.1%							1,729	1,766	-2.1%
254-BROWNSVILLE CIRC	46	37	25.5%							1,015	809	25.5%
267-LUDLAM LIMITED	96	71	36.3%							2,116	1,553	36.3%
272 KAT-SUNSET	278	213	30.5%							6,107	4,681	30.5%
286-NORTH POINTE CIRC	32	36	-11.8%	29	26	11.5%				819	901	-9.1%
344	66	50	30.7%							1,448	1,108	30.7%
Subtotal Contracted Reg. & Circ. Routes	5,211	4,410	18.2%	2,322	2,221	4.5%	1,644	1,636	0.5%	130,498	112,447	16.1%
Percentage of All Bus Routes	5.2%	5.4%		3.6%	3.9%		3.3%	3.5%		4.9%	5.1%	

(1) Several express routes were suspended beginning at the end of March 2020, due to the SARS-CoV-2 pandemic, while other routes had alignment and schedule modifications made to them, in an ongoing effort to optimize service delivery.

(*) Express routes under contracted operation.

YEAR-OVER-YEAR BUS RIDERSHIP BY ROUTE SERVICE TYPE

Boardings by Service Type and Route	Average Weekday	Average Weekday	Percent Change	Average Saturday	Average Saturday	Percent Change	Average Sunday	Average Sunday	Percent Change	Total Monthly	Total Monthly	Percent Change
	Jun-21	Jun-20	21 vs 20	Jun-21	Jun-20	21 vs 20	Jun-21	Jun-20	21 vs 20	Jun-21	Jun-20	21 vs 20
Contracted Express Routes												
301-DADE MONROE EXPRESS	964	635	51.8%	980	706	38.9%	959	581	65.1%	28,968	19,118	51.5%
302-CARD SOUND EXPRESS	75	42	80.9%	73	30	140.5%	45	30	49.6%	2,129	1,158	83.9%
Subtotal Contracted Express Routes	1,039	677	53.6%	1,053	736	43.1%	1,004	611	64.4%	31,097	20,276	53.4%
Percentage of All Bus Routes	1.0%	0.8%		1.6%	1.3%		2.0%	1.3%		1.2%	0.9%	
Limited Stop Routes												
51-FLAGLER MAX	1,904	1,134	67.9%							41,888	24,946	67.9%
93 - BISCAYNE MAX	1,431	1,446	-1.0%							31,492	31,804	-1.0%
120 - BEACH MAX	4,188	3,276	27.8%	2,471	2,663	-7.2%	2,050	1,747	17.3%	110,224	89,721	22.9%
252-CORAL REEF MAX	402	245	63.6%	203	145	39.8%	155	136	13.4%	10,264	6,526	57.3%
277-7TH AVENUE MAX	302	331	-8.9%							6,642	7,292	-8.9%
287-SAGA BAY MAX	146	97	50.4%							3,219	2,141	50.4%
297-27th AVENUE ORANGE MAX	548	669	-18.1%							12,052	14,717	-18.1%
Subtotal Limited Stop (MAX) Routes	8,921	7,199	23.9%	2,674	2,809	-4.8%	2,204	1,884	17.0%	215,781	177,147	21.8%
Percentage of All Bus Routes	8.9%	8.8%		4.1%	4.9%		4.4%	4.0%		8.1%	8.0%	
Free Route												
132 - TRI-RAIL DORAL	13	11	16.1%							226	252	-10.3%
Percentage of All Bus Routes	0.0%	0.0%								0.0%	0.0%	
Shuttles												
55-MARLINS SHUTTLE												
Percentage of All Bus Routes												
Contractor-Operated Lifeline Routes												
GREEN HILLS SHUTTLE	18	6	212.9%							73	35	108.6%
KINGS CREEK SHUTTLE	18	4	329.4%							73	17	329.4%
SIERRA LAKES SHUTTLE	16	20	-20.3%							63	79	-20.3%
ROBERT SHARP SHUTTLE	21	12	71.7%							103	48	114.6%
AHEPA SHUTTLE	22	20	8.9%							86	79	8.9%
FEDERATION GARDENS SHUTTLE				17	33	-50.5%				66	100	-34.0%
Subtotal Contractor-Operated Lifeline Routes	94	62	53.2%	17	33	-50.5%				464	358	29.6%
Percentage of All Bus Routes	0.1%	0.1%		0.0%	0.1%					0.0%	0.0%	
Other Circulator Route												
200-CUTLER BAY LOCAL	81	92	-11.1%	64	70	-9.3%	41	33		2,043	2,424	-15.7%
Percentage of All Bus Routes	0.1%	0.1%		0.1%	0.1%		0.1%	0.1%		0.1%	0.1%	
All Other (Regular) Routes	82,130	67,849	21.0%	57,673	50,713	13.7%	43,506	42,265	2.9%	2,211,379	1,864,521	18.6%
Percentage of All Bus Routes	81.6%	83.2%		88.5%	88.4%		87.1%	89.5%		82.7%	84.3%	
Total Bus System (1)	100,645	81,597	23.3%	65,182	57,348	13.7%	49,957	47,236	5.8%	2,672,570	2,210,725	20.9%

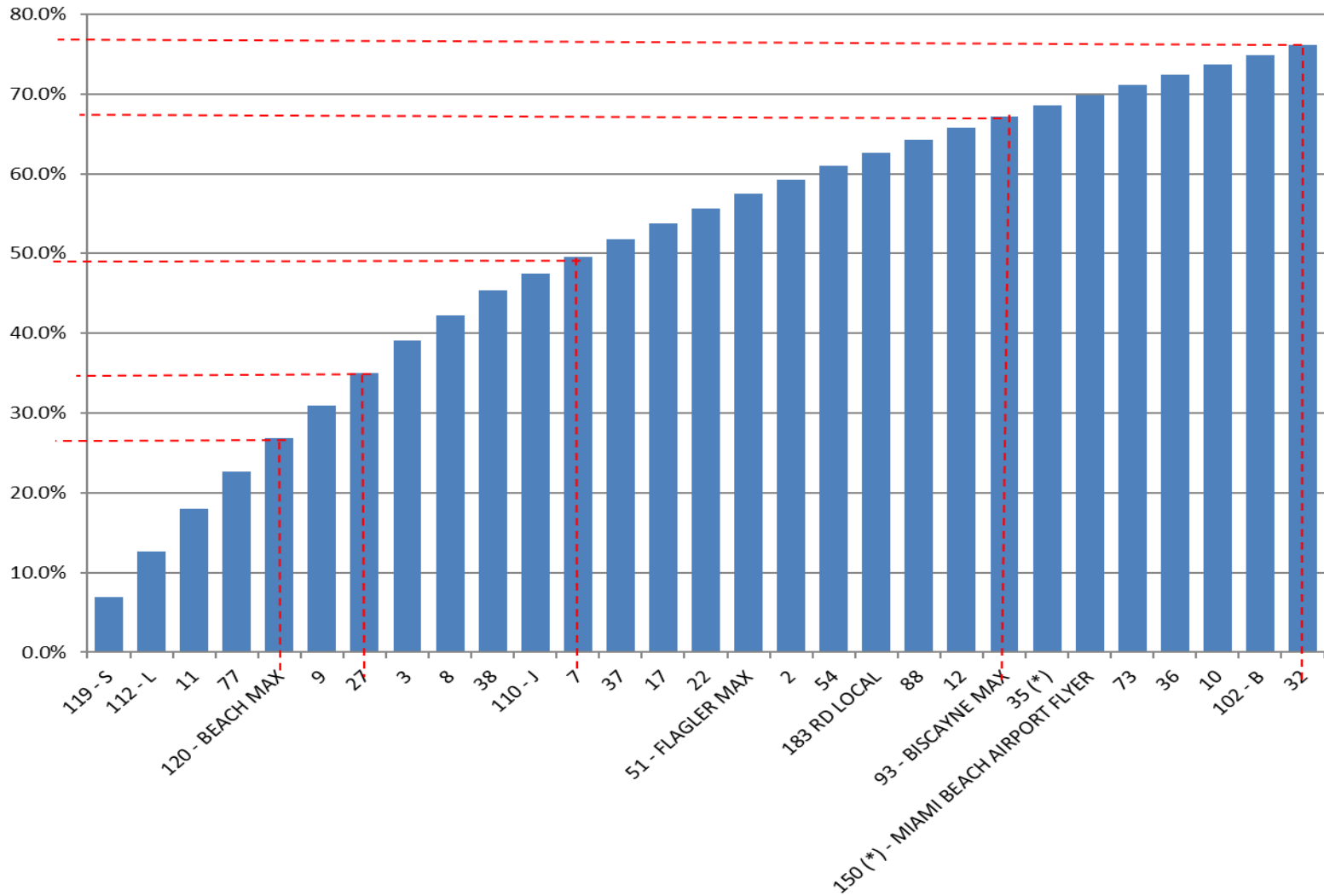
Bus Routes as Ranked by Percentage of Average Weekday Ridership

Rank	Route	Average Weekday	Percent Share	Cumul Pct Share	Rank	Route	Average Weekday	Percent Share	Cumul Pct Share	Rank	Route	Average Weekday	Percent Share	Cumul Pct Share
1	119	6,973	6.9%	6.9%	36	34	938	0.9%	82.9%	71	101	132	0.1%	99.0%
2	112	5,772	5.7%	12.7%	37	21	882	0.9%	83.7%	72	202	100	0.1%	99.1%
3	11	5,338	5.3%	18.0%	38	99	882	0.9%	84.6%	73	267	96	0.1%	99.2%
4	77	4,689	4.7%	22.6%	39	33	850	0.8%	85.5%	74	200	81	0.1%	99.3%
5	120	4,188	4.2%	26.8%	40	24	829	0.8%	86.3%	75	248	79	0.1%	99.4%
6	9	4,173	4.1%	30.9%	41	137	801	0.8%	87.1%	76	302	75	0.1%	99.4%
7	27	4,125	4.1%	35.0%	42	105	796	0.8%	87.9%	77	136	73	0.1%	99.5%
8	3	4,063	4.0%	39.1%	43	135	679	0.7%	88.5%	78	836	73	0.1%	99.6%
9	8	3,192	3.2%	42.2%	44	19	674	0.7%	89.2%	79	344	66	0.1%	99.6%
10	38	3,102	3.1%	45.3%	45	207	648	0.6%	89.9%	80	254	46	0.0%	99.7%
11	110	2,164	2.1%	47.5%	46	52	648	0.6%	90.5%	81	217	45	0.0%	99.7%
12	7	2,145	2.1%	49.6%	47	75	642	0.6%	91.1%	82	286	32	0.0%	99.8%
13	37	2,142	2.1%	51.7%	48	208	558	0.6%	91.7%	83	211	27	0.0%	99.8%
14	17	2,008	2.0%	53.7%	49	297	548	0.5%	92.2%	84	82	27	0.0%	99.8%
15	22	1,946	1.9%	55.7%	50	42	531	0.5%	92.8%	85	212	25	0.0%	99.8%
16	51	1,904	1.9%	57.6%	51	95	528	0.5%	93.3%	86	AS	22	0.0%	99.9%
17	2	1,731	1.7%	59.3%	52	31	521	0.5%	93.8%	87	RS	21	0.0%	99.9%
18	54	1,712	1.7%	61.0%	53	104	487	0.5%	94.3%	88	155	21	0.0%	99.9%
19	183	1,711	1.7%	62.7%	54	71	404	0.4%	94.7%	89	KC	18	0.0%	99.9%
20	88	1,579	1.6%	64.2%	55	252	402	0.4%	95.1%	90	GH	18	0.0%	99.9%
21	12	1,504	1.5%	65.7%	56	72	387	0.4%	95.5%	91	SL	16	0.0%	100.0%
22	93	1,431	1.4%	67.2%	57	113	350	0.3%	95.8%	92	46	14	0.0%	100.0%
23	35	1,366	1.4%	68.5%	58	29	317	0.3%	96.1%	93	132	13	0.0%	100.0%
24	150	1,347	1.3%	69.9%	59	277	302	0.3%	96.4%	94	246	10	0.0%	100.0%
25	73	1,317	1.3%	71.2%	60	57	293	0.3%	96.7%	95	55	0	0.0%	100.0%
26	36	1,305	1.3%	72.5%	61	238	278	0.3%	97.0%					
27	10	1,254	1.2%	73.7%	62	272	278	0.3%	97.3%					
28	102	1,212	1.2%	74.9%	63	210	275	0.3%	97.6%					
29	32	1,197	1.2%	76.1%	64	39	270	0.3%	97.8%					
30	62	1,037	1.0%	77.1%	65	108	228	0.2%	98.1%					
31	107	992	1.0%	78.1%	66	56	191	0.2%	98.2%					
32	40	967	1.0%	79.1%	67	103	182	0.2%	98.4%					
33	87	964	1.0%	80.0%	68	115	171	0.2%	98.6%					
34	301	964	1.0%	81.0%	69	287	146	0.1%	98.7%					
35	16	950	0.9%	81.9%	70	1	142	0.1%	98.9%					
Total Boardings												100,645	100.0%	100.0%

entirely
contracted
contracted
supplementals

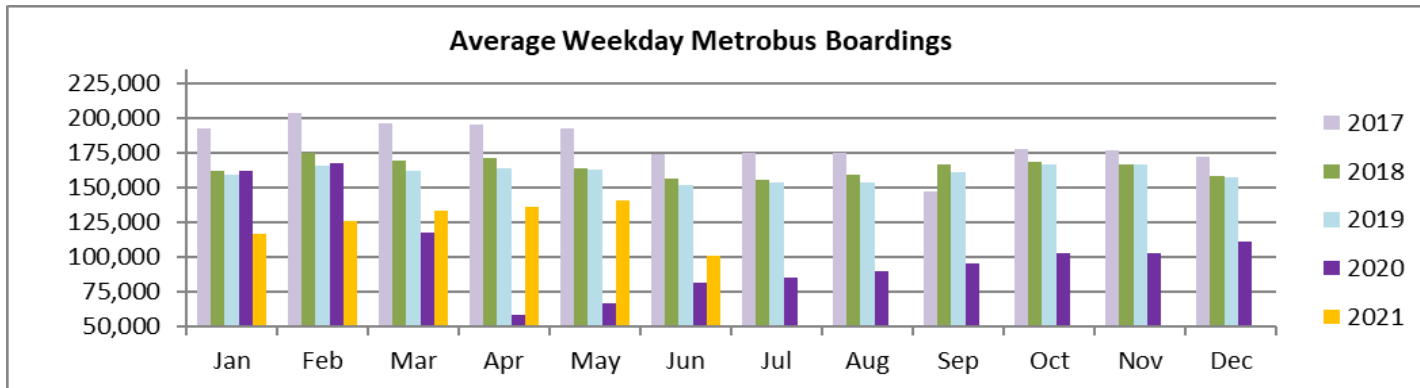
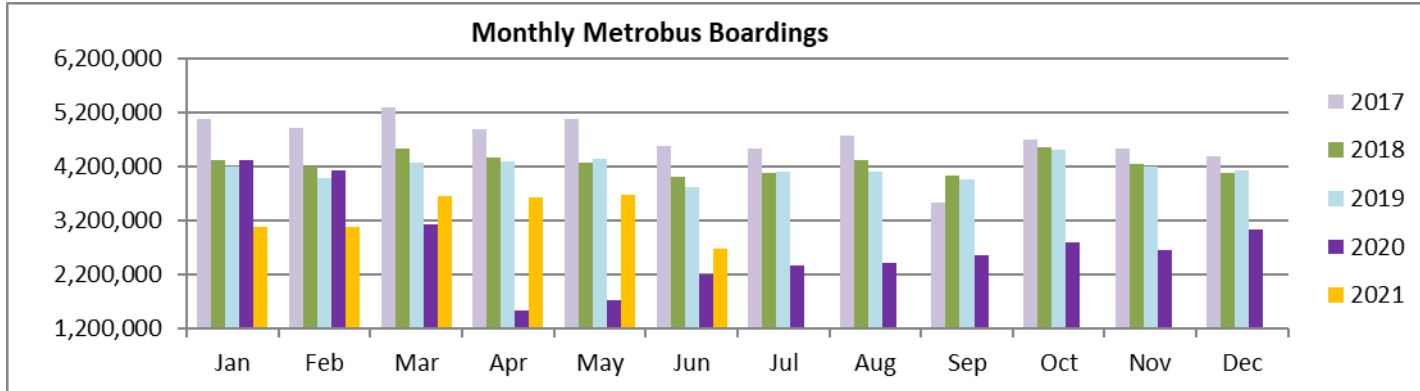
(1) Average weekday ridership rounded to the nearest unit; the routes shaded in blue are directly operated, with supplemental runs provided by contractors.
(2) Includes the five Lifeline Shuttles that operate on weekdays: Ahepa, Green Hills, Kings Creek, Robert Sharp and Sierra Lakes.

**Bus - Cumulative Percentage Average Weekday Ridership Share
Top 1/4, 1/3, 1/2, 2/3 and 3/4 of Routes**



(*) Routes entirely run by contractor

TOTAL MONTHLY AND AVERAGE WEEKDAY RIDERSHIP YEAR OVER YEAR COMPARISON CHARTS – METROBUS



**“TOP 5 / BOTTOM 5” BUS ROUTES AVERAGE WEEKDAY RIDERSHIP PERFORMANCE
YEAR OVER YEAR COMPARISONS**

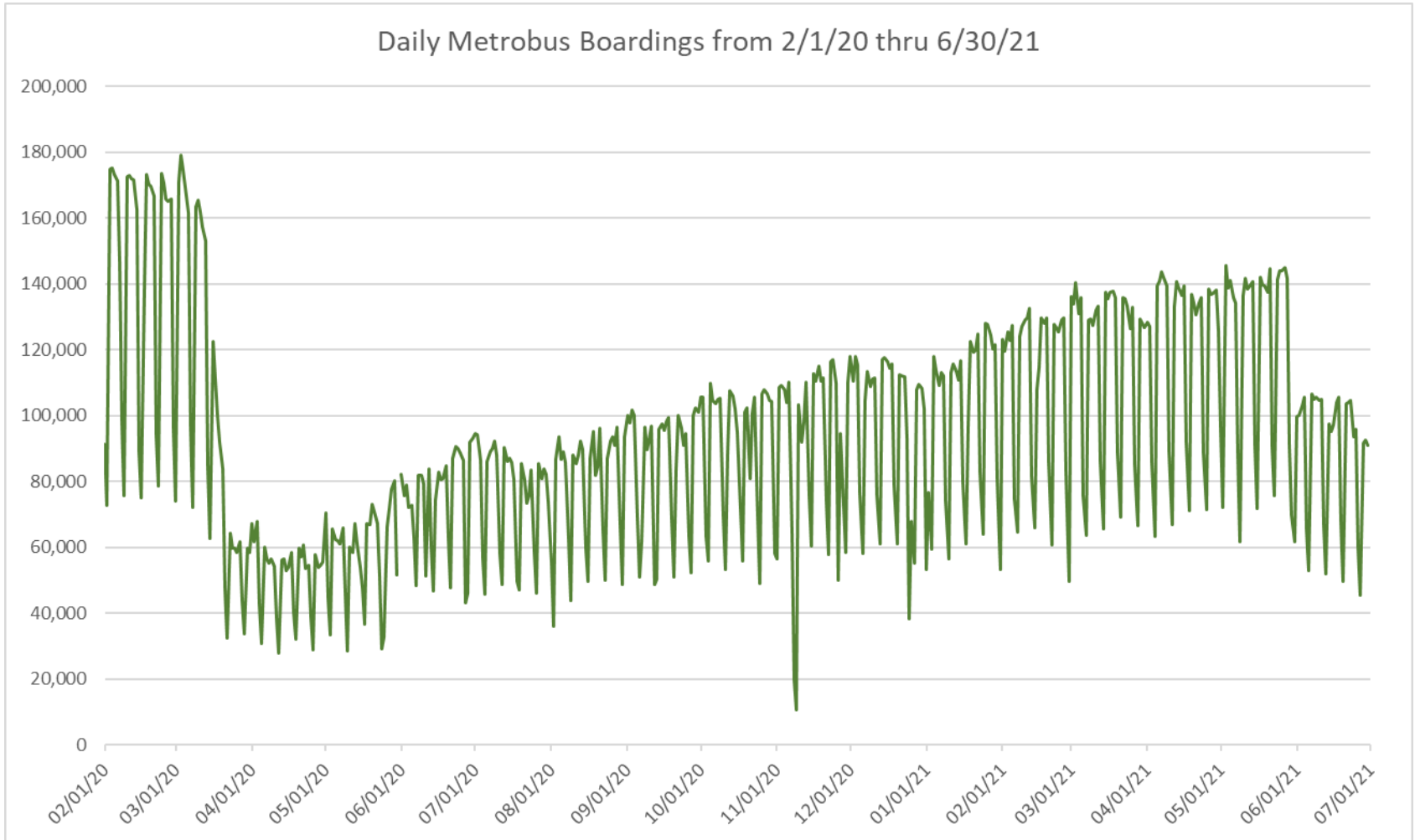
Route	Jun-21	Jun-20	Absolute Delta (1)	Percent Delta (2)
11	5,338	3,478	1,860	53.5%
3 (†)	4,063	2,246	1,817	80.9%
119 – S (†)	6,973	5,160	1,813	35.1%
8 (†)	3,192	1,801	1,391	77.2%
9 (†)	4,173	2,925	1,249	42.7%
21	882	1,392	-510	-36.6%
17	2,008	2,353	-345	-14.7%
208 (8st) - LITTLE HAVANA CIRC	558	867	-309	-35.6%
54	1,712	1,977	-265	-13.4%
207 (7st) - LITTLE HAVANA CIRC	648	912	-264	-29.0%

(†) Route with supplementals run by contractor..

(1) Averages rounded to the nearest boarding, data as reported by APC system or/and contractor, depending on route; Lifelines excluded.

(2) As a result of the SARS-CoV-2 pandemic, rides were fare-free beginning March 22, 2020; many bus routes continued reporting YOY gains in June 2021, since June 2020 was the fourth month showing clear reduction effects on ridership from the SARS-CoV-2 pandemic. Fares were reinstated June 1, 2021, and ridership data from the farebox system rather than the automatic passenger counter system is utilized from that date going forward.

DAILY METROBUS RIDERSHIP SINCE FEBRUARY 1, 2020



- (1) National Emergency was declared on 3/13/20 as a result of the SARS-CoV-2 pandemic.
- (2) There was no Metrobus, Metrorail and Metromover service on 5/31/20, as a safety precaution.
- (3) The dip at the start of the second week of November 2020 is due to Hurricane Eta.
- (4) The reduction seen beginning 6/1/21 is partly due to the resumption of fares and partly the result of resuming reporting Cubic farebox data rather than bus APC counts.
- (5) Periodic (weekly) variations are prominent, since weekday ridership is almost always significantly higher than weekend or holiday ridership.

METROBUS PARKING PATRONAGE SUMMARY June 2021

PARK-RIDE LOT	ACTUAL AVAILABLE SPACES	ACTUAL OCCUPANCY	PERCENT OCCUPANCY
Transitway / SW 152nd St	200	77	39%
Transitway / SW 168th St	149	46	31%
Transitway / SW 200th Street (effective February 2020)	100	26	26%
Transitway / SW 112 Ave (Target)	450	96	21%
Transitway / SW 244th St	95	25	26%
Transitway / SW 296th St	139	33	24%
Transitway / SW 344th St	248	138	56%
Coral Reef Drive 117/Turnpike	95	59	62%
Golden Glades - East Lot	535	225	42%
Golden Glades - West Lot	1,007	44	4%
Hammocks Town Center (SW 152 Ave / SW 104 St)	50	0	0%
Kendall Dr./SW 127th Ave	161	7	4%
West Kendall Transit Term (Kendall Dr / SW162 Ave)	40	2	5%
NW 7th Avenue Transit Village (NW 7 Ave / NW 62 St)	25	19	76%
Miami Gardens Dr. / NW 73rd Ave	136	0	0%
Dolphin Station (effective Mar 2020)	348	39	11%
I-75 / Miami Gardens Dr (effective June 2019)	298	0	0%
TOTAL	4,076	836	21%

Note: some park-ride lots are joint-use and the number of park-ride vehicles may exceed the number of spaces allocated.

Metrorail



METRORAIL AVERAGE WEEKDAY BOARDINGS BY STATION (†)

Weekdays	Average Weekday	Average Weekday	Percent Change	Average Weekday	Percent Change	Average Weekday	Percent Change	Average Weekday	Percent Change
STATIONS	Jun-21	Jun-20	YOY	Feb-20	Current vs Feb-20	May-21 (*)	MOM	Jun-19	YO2Y
ALLAPATTAH	972	906	7.3%	1,942	-50.0%	1,305	-25.6%	1,697	-42.7%
BRICKELL	3,012	2,715	10.9%	6,529	-53.9%	4,296	-29.9%	5,720	-47.4%
BROWNSVILLE	512	728	-29.7%	862	-40.6%	692	-26.1%	765	-33.1%
CIVIC CENTER	2,510	1,819	38.0%	6,143	-59.1%	2,988	-16.0%	5,514	-54.5%
COCONUT GROVE	937	618	51.5%	1,795	-47.8%	1,175	-20.3%	1,478	-36.6%
CULMER	659	789	-16.5%	1,392	-52.6%	935	-29.5%	1,109	-40.5%
DADELAND NORTH	2,171	1,583	37.2%	5,926	-63.4%	3,991	-45.6%	5,222	-58.4%
DADELAND SOUTH	2,725	2,394	13.8%	7,150	-61.9%	3,452	-21.1%	6,368	-57.2%
DOUGLAS ROAD	1,702	881	93.1%	3,624	-53.0%	1,394	22.1%	3,115	-45.4%
DR. MARTIN LUTHER KING, JR.	607	660	-8.0%	1,157	-47.5%	792	-23.4%	1,050	-42.2%
EARLINGTON HEIGHTS	794	819	-3.0%	1,662	-52.2%	999	-20.5%	1,425	-44.3%
GOVERNMENT CENTER	3,912	2,488	57.3%	10,557	-62.9%	4,221	-7.3%	9,042	-56.7%
HIALEAH	703	704	-0.1%	1,253	-43.9%	728	-3.4%	1,180	-40.4%
MIAMI INTERNATIONAL AIRPORT	704	473	48.6%	1,711	-58.9%	823	-14.5%	1,495	-52.9%
NORTHSIDE	805	877	-8.2%	1,476	-45.4%	1,096	-26.6%	1,285	-37.4%
OKEECHOBEE	601	530	13.4%	1,164	-48.4%	715	-16.0%	1,102	-45.5%
OVERTOWN / ARENA	726	633	14.6%	2,274	-68.1%	899	-19.3%	2,068	-64.9%
PALMETTO	742	608	22.1%	1,543	-51.9%	871	-14.8%	1,355	-45.2%
SANTA CLARA	419	421	-0.4%	812	-48.4%	526	-20.3%	680	-38.4%
SOUTH MIAMI	1,297	873	48.6%	3,015	-57.0%	1,231	5.4%	2,612	-50.4%
TRI-RAIL	704	608	15.8%	1,207	-41.7%	879	-19.9%	1,071	-34.3%
UNIVERSITY	604	294	105.2%	2,784	-78.3%	776	-22.2%	1,749	-65.5%
VIZCAYA	633	469	34.9%	1,390	-54.5%	842	-24.8%	1,074	-41.1%
TOTAL	28,448	22,889	24.3%	67,367	-57.8%	35,627	-20.1%	58,178	-51.1%

(†) In this table and those which follow, "YOY" stands for "year-over-year", "MOM" for "month-over-month" and "YO2Y" for "year over two years", i.e., current month vs 12 months prior, one month prior and 24 months prior, respectively.

(*) Due to effects from the SARS-CoV-2 pandemic; rides were fare-free beginning March 22, 2020; fares were reinstated on June 1, 2021, in part accounting for the drop in ridership from May 2021.

METRORAIL AVERAGE SATURDAY BOARDINGS BY STATION

Saturdays	Average Saturday	Average Saturday	Percent Change	Average Saturday	Percent Change	Average Saturday	Percent Change	Average Saturday	Percent Change
STATIONS	Jun-21	Jun-20	YOY	Feb-20	Current vs Feb-20	May-21	MOM	Jun-19	YO2Y
ALLAPATTAH	600	649	-7.5%	1,051	-42.9%	834	-28.1%	934	-35.8%
BRICKELL	1,771	1,940	-8.7%	2,811	-37.0%	2,811	-37.0%	2,459	-28.0%
BROWNSVILLE	326	575	-43.3%	520	-37.3%	498	-34.6%	483	-32.6%
CIVIC CENTER	517	535	-3.4%	959	-46.1%	767	-32.6%	887	-41.8%
COCONUT GROVE	528	414	27.4%	928	-43.2%	711	-25.8%	746	-29.3%
CULMER	393	552	-28.8%	721	-45.5%	587	-33.1%	621	-36.8%
DADELAND NORTH	956	1,020	-6.3%	1,994	-52.0%	2,037	-53.1%	1,662	-42.5%
DADELAND SOUTH	1,290	1,717	-24.9%	2,625	-50.9%	2,125	-39.3%	2,239	-42.4%
DOUGLAS ROAD	839	625	34.1%	1,319	-36.4%	756	10.9%	1,120	-25.1%
DR. MARTIN LUTHER KING, JR.	353	509	-30.6%	625	-43.5%	531	-33.4%	570	-38.0%
EARLINGTON HEIGHTS	522	558	-6.4%	935	-44.2%	682	-23.4%	830	-37.1%
GOVERNMENT CENTER	1,851	1,288	43.7%	4,262	-56.6%	2,465	-24.9%	3,304	-44.0%
HIALEAH	366	441	-17.1%	583	-37.2%	457	-20.0%	541	-32.3%
MIAMI INTERNATIONAL AIRPORT	570	407	40.1%	1,330	-57.1%	847	-32.7%	1,158	-50.8%
NORTHSIDE	540	708	-23.7%	878	-38.5%	901	-40.1%	776	-30.4%
OKEECHOBEE	300	289	3.8%	408	-26.5%	403	-25.5%	377	-20.3%
OVERTOWN / ARENA	332	550	-39.7%	678	-51.1%	480	-31.0%	539	-38.5%
PALMETTO	262	289	-9.4%	458	-42.9%	366	-28.5%	365	-28.4%
SANTA CLARA	246	272	-9.6%	422	-41.7%	327	-24.8%	380	-35.3%
SOUTH MIAMI	648	580	11.8%	1,256	-48.4%	715	-9.4%	1,075	-39.8%
TRI-RAIL	340	403	-15.5%	614	-44.6%	558	-39.1%	493	-31.1%
UNIVERSITY	218	157	38.5%	714	-69.5%	407	-46.6%	467	-53.4%
VIZCAYA	365	286	27.7%	622	-41.3%	512	-28.7%	517	-29.4%
TOTAL	14,129	14,761	-4.3%	26,714	-47.1%	20,777	-32.0%	22,544	-37.3%

METRORAIL AVERAGE SUNDAY BOARDINGS BY STATION

Sundays	Average Sunday	Average Sunday	Percent Change	Average Sunday	Percent Change	Average Sunday	Percent Change	Average Sunday	Percent Change
STATIONS	Jun-21	Jun-20	YOY	Feb-20	Current vs Feb-20	May-21	MOM	Jun-19	YO2Y
ALLAPATTAH	399	451	-11.5%	791	-49.6%	594	-32.9%	682	-41.5%
BRICKELL	1,369	1,586	-13.7%	2,379	-42.4%	2,257	-39.3%	1,865	-26.6%
BROWNSVILLE	248	420	-40.9%	406	-38.9%	381	-34.9%	348	-28.8%
CIVIC CENTER	412	436	-5.6%	791	-47.9%	630	-34.6%	718	-42.7%
COCONUT GROVE	419	354	18.4%	838	-50.0%	525	-20.2%	553	-24.2%
CULMER	297	418	-28.9%	616	-51.7%	445	-33.2%	496	-40.0%
DADELAND NORTH	756	725	4.3%	1,685	-55.1%	1,417	-46.6%	1,163	-35.0%
DADELAND SOUTH	1,039	1,427	-27.2%	2,210	-53.0%	1,516	-31.4%	1,712	-39.3%
DOUGLAS ROAD	573	453	26.6%	1,090	-47.4%	576	-0.5%	820	-30.1%
DR. MARTIN LUTHER KING, JR.	247	391	-37.0%	506	-51.3%	376	-34.4%	404	-39.0%
EARLINGTON HEIGHTS	375	444	-15.5%	799	-53.1%	518	-27.6%	624	-39.9%
GOVERNMENT CENTER	1,402	997	40.6%	4,044	-65.3%	1,811	-22.6%	2,347	-40.3%
HIALEAH	262	325	-19.3%	472	-44.5%	335	-21.7%	384	-31.7%
MIAMI INTERNATIONAL AIRPORT	568	434	30.9%	1,343	-57.7%	796	-28.6%	1,171	-51.5%
NORTHSIDE	425	511	-16.8%	653	-34.9%	622	-31.7%	567	-25.2%
OKEECHOBEE	157	173	-9.1%	273	-42.5%	242	-35.2%	237	-33.9%
OVERTOWN / ARENA	274	529	-48.2%	544	-49.7%	418	-34.5%	420	-34.7%
PALMETTO	157	203	-22.6%	336	-53.2%	212	-26.0%	218	-28.0%
SANTA CLARA	151	183	-17.6%	280	-46.2%	205	-26.7%	220	-31.6%
SOUTH MIAMI	459	422	9.0%	987	-53.4%	504	-9.0%	774	-40.6%
TRI-RAIL	280	318	-11.9%	528	-46.9%	416	-32.7%	381	-26.5%
UNIVERSITY	164	113	44.6%	608	-73.1%	257	-36.2%	282	-42.0%
VIZCAYA	277	230	20.8%	524	-47.1%	349	-20.6%	350	-20.8%
TOTAL	10,710	11,540	-7.2%	22,701	-52.8%	15,403	-30.5%	16,739	-36.0%

METRORAIL TOTAL MONTHLY BOARDINGS BY STATION

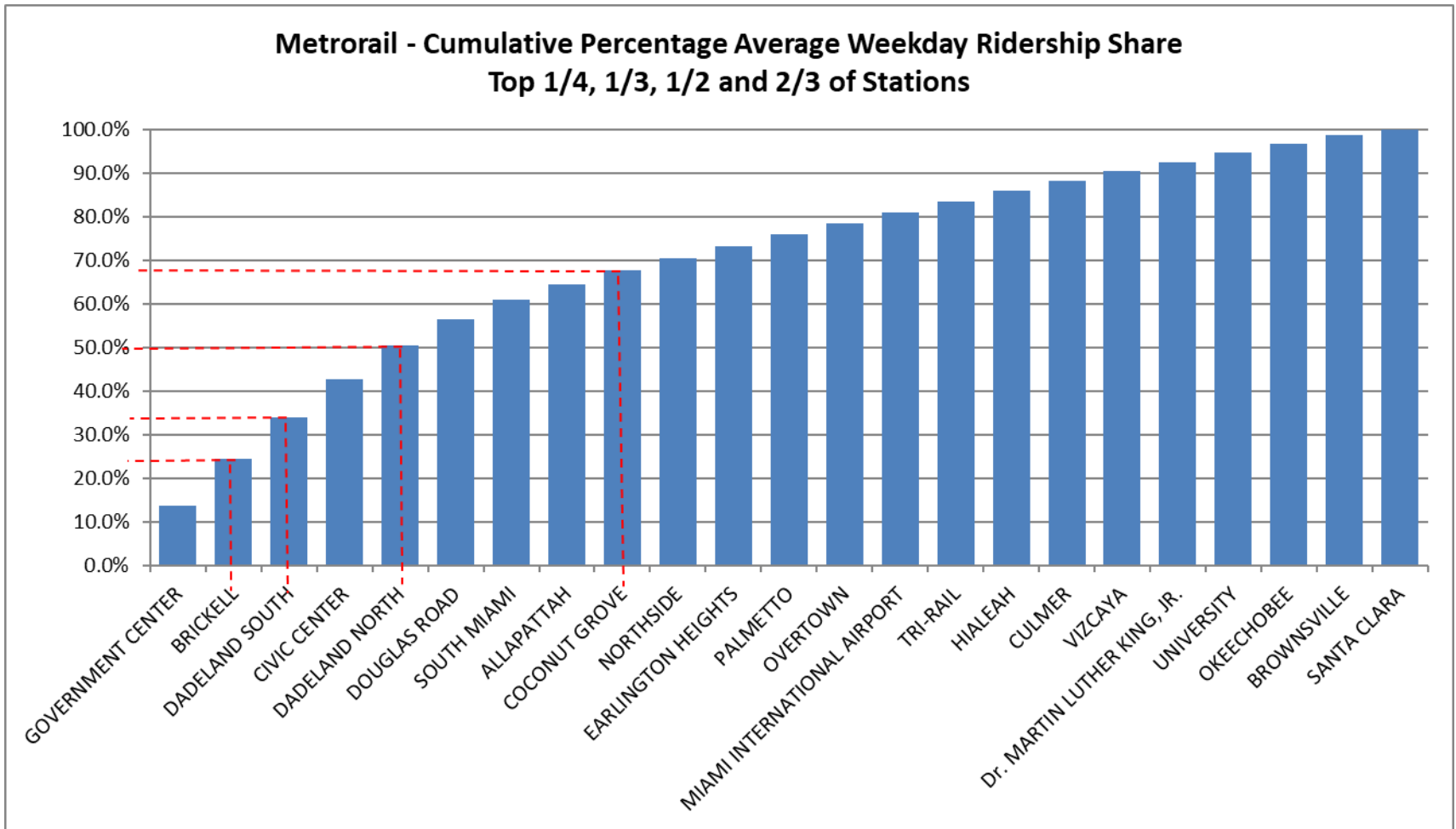
Monthly Totals	Total Month	Total Month	Percent Change	Total Month	Percent Change	Total Month	Percent Change	Total Month	Percent Change
STATIONS	Jun-21	Jun-20	YOY	Feb-20	Current vs Feb-20	May-21	MOM	Jun-19	YO2Y
ALLAPATTAH	25,357	24,325	4.2%	46,868	-45.9%	34,012	-25.4%	42,011	-39.6%
BRICKELL	78,739	73,831	6.6%	152,259	-48.3%	113,698	-30.7%	136,028	-42.1%
BROWNSVILLE	13,525	19,989	-32.3%	21,285	-36.5%	18,717	-27.7%	19,447	-30.5%
CIVIC CENTER	58,891	43,896	34.2%	128,921	-54.3%	67,548	-12.8%	118,318	-50.2%
COCONUT GROVE	24,403	16,674	46.4%	43,580	-44.0%	30,432	-19.8%	36,063	-32.3%
CULMER	17,214	21,245	-19.0%	33,497	-48.6%	24,441	-29.6%	27,757	-38.0%
DADELAND NORTH	54,383	41,800	30.1%	132,894	-59.1%	99,120	-45.1%	118,570	-54.1%
DADELAND SOUTH	69,123	65,239	6.0%	162,416	-57.4%	89,242	-22.5%	147,123	-53.0%
DOUGLAS ROAD	43,049	23,696	81.7%	82,141	-47.6%	9,038	376.3%	71,998	-40.2%
DR. MARTIN LUTHER KING, JR.	15,694	18,116	-13.4%	27,980	-43.9%	20,977	-25.2%	25,881	-39.4%
EARLINGTON HEIGHTS	21,058	22,018	-4.4%	40,697	-48.3%	26,718	-21.2%	35,780	-41.1%
GOVERNMENT CENTER	98,531	63,879	54.2%	243,414	-59.5%	108,289	-9.0%	209,101	-52.9%
HIALEAH	17,908	18,557	-3.5%	29,516	-39.3%	18,946	-5.5%	28,221	-36.5%
MIAMI INTERNATIONAL AIRPORT	20,060	13,776	45.6%	46,115	-56.5%	25,599	-21.6%	41,541	-51.7%
NORTHSIDE	21,543	24,173	-10.9%	36,127	-40.4%	30,303	-28.9%	32,422	-33.6%
OKEECHOBEE	14,996	13,500	11.1%	26,026	-42.4%	17,894	-16.2%	25,111	-40.3%
OVERTOWN / ARENA	18,217	18,245	-0.2%	49,911	-63.5%	22,961	-20.7%	46,162	-60.5%
PALMETTO	17,942	15,338	17.0%	33,944	-47.1%	20,660	-13.2%	30,018	-40.2%
SANTA CLARA	10,760	11,070	-2.8%	19,245	-44.1%	13,431	-19.9%	16,596	-35.2%
SOUTH MIAMI	32,837	23,199	41.5%	69,412	-52.7%	31,357	4.7%	61,491	-46.6%
TRI-RAIL	17,988	16,254	10.7%	29,120	-38.2%	22,963	-21.7%	25,786	-30.2%
UNIVERSITY	14,782	7,554	95.7%	61,253	-75.9%	19,103	-22.6%	38,727	-61.8%
VIZCAYA	16,469	12,384	33.0%	32,497	-49.3%	21,662	-24.0%	25,814	-36.2%
TOTAL	723,469	608,758	18.8%	1,549,118	-53.3%	887,111	-18.4%	1,359,966	-46.8%

METRORAIL HOLIDAY BOARDINGS BY STATION Juneteenth

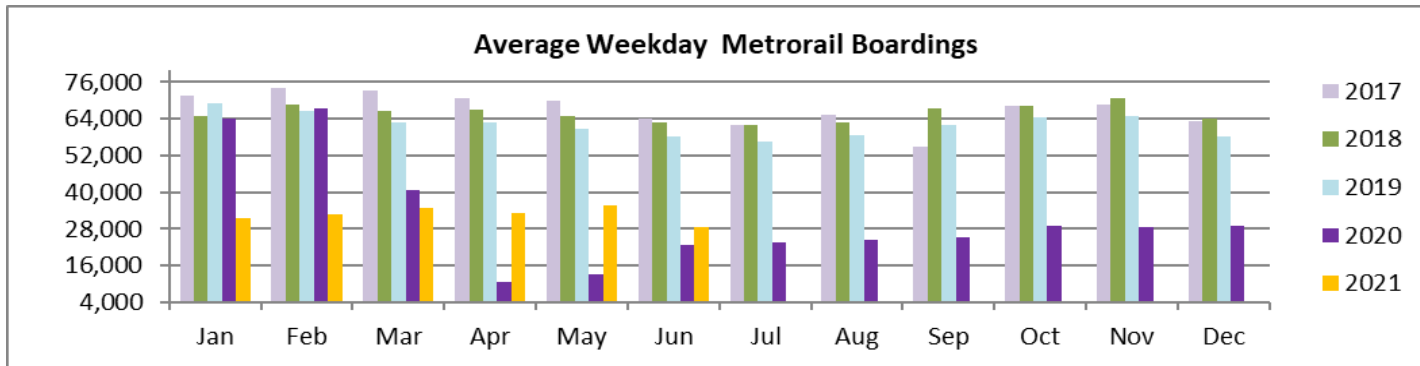
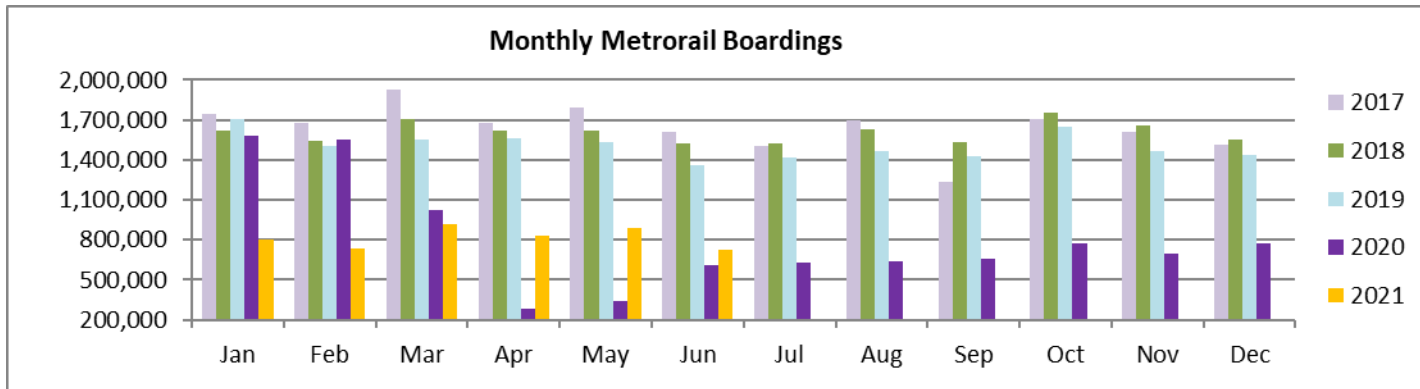
STATIONS	Juneteenth (*)	
	2020	2021
ALLAPATTAH		959
BRICKELL		2,937
BROWNSVILLE		488
CIVIC CENTER		2,464
COCONUT GROVE		939
CULMER		611
DADELAND NORTH		1,938
DADELAND SOUTH		2,588
DOUGLAS ROAD		1,667
DR. MARTIN LUTHER KING, JR.		554
EARLINGTON HEIGHTS		801
GOVERNMENT CENTER		3,355
HIALEAH		627
MIAMI INTERNATIONAL AIRPORT		733
NORTHSIDE		776
OKEECHOBEE		553
OVERTOWN / ARENA		555
PALMETTO		677
SANTA CLARA		377
SOUTH MIAMI		1,179
TRI-RAIL		731
UNIVERSITY		580
VIZCAYA		612
TOTAL		26,701

(*) June 21, 2021

METRORAIL CUMULATIVE PERCENTAGE RIDERSHIP SHARE



TOTAL MONTHLY AND AVERAGE WEEKDAY RIDERSHIP YEAR OVER YEAR COMPARISON CHARTS – METRORAIL



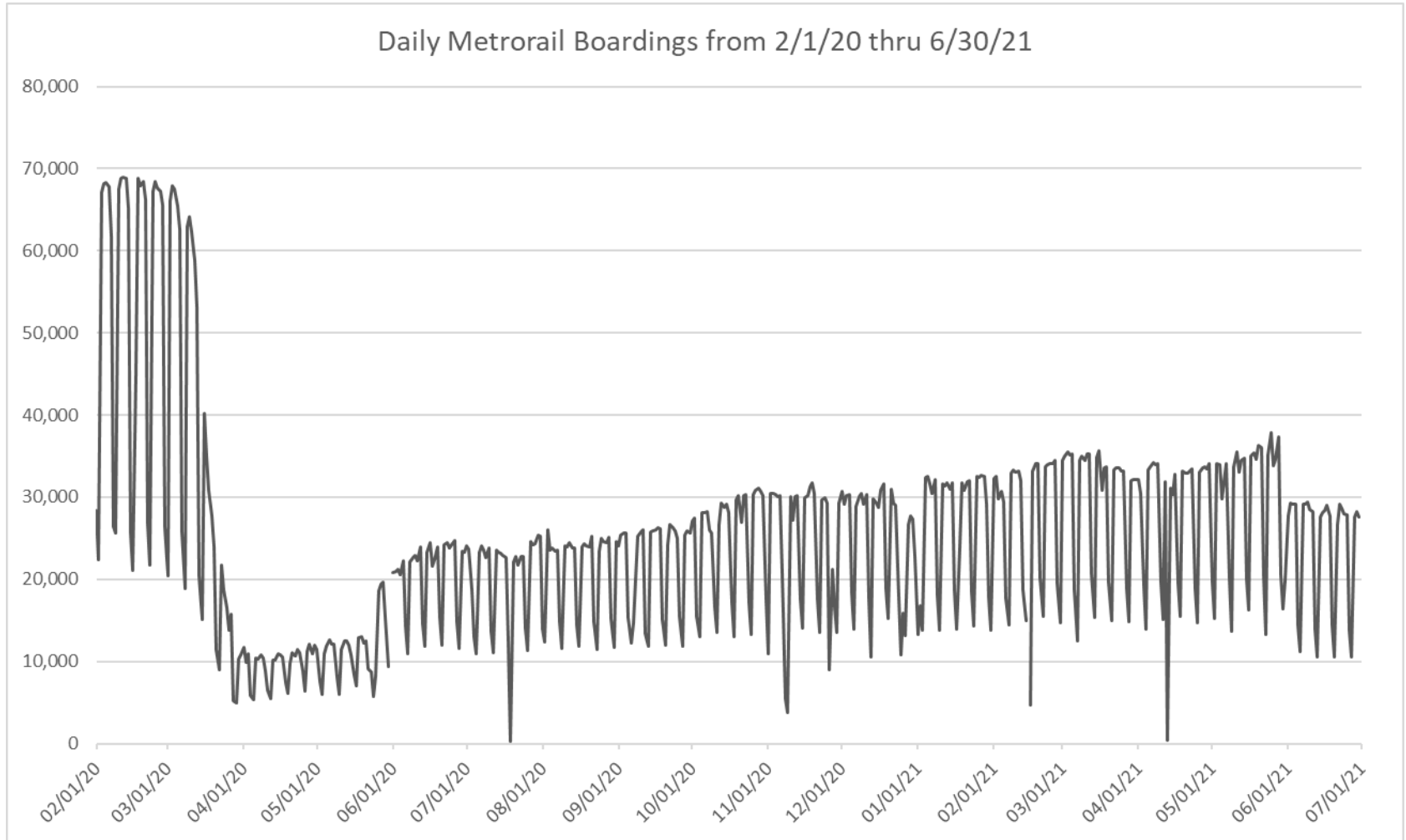
**“TOP 5 / BOTTOM 5” RAIL STATIONS AVERAGE WEEKDAY RIDERSHIP PERFORMANCE
YEAR OVER YEAR COMPARISONS**

Station	Jun-21	Jun-20	Absolute Delta (1)	Percent Delta (2)
GOVERNMENT CENTER	3,912	2,488	1,424	57.3%
DOUGLAS ROAD	1,702	881	821	93.1%
CIVIC CENTER	2,510	1,819	691	38.0%
DADELAND NORTH	2,171	1,583	589	37.2%
SOUTH MIAMI	1,297	873	424	48.6%
BROWNSVILLE	512	728	-216	-29.7%
CULMER	659	789	-130	-16.5%
NORTHSIDE	805	877	-72	-8.2%
Dr. MARTIN LUTHER KING, JR.	607	660	-53	-8.0%
EARLINGTON HEIGHTS	794	819	-25	-3.0%

(1) Averages rounded to the nearest boarding.

(2) As a result of the SARS-CoV-2 pandemic, rides were fare-free beginning March 22, 2020; many rail stations continued reporting YOY gains in June 2021, since June 2020 was the fourth month showing clear reduction effects on ridership from the SARS-CoV-2 pandemic. Fares were reinstated June 1, 2021, and ridership data from the faregate system rather than the video camera counter system is utilized from that date going forward.

DAILY METRORAIL RIDERSHIP SINCE FEBRUARY 1, 2020



- (1) National Emergency was declared on 3/13/20 as a result of the SARS-CoV-2 pandemic.
- (2) There was no Metrobus, Metrorail and Metromover service on 5/31/20, as a safety precaution.
- (3) The dip at the start of the second week of November 2020 is due to Hurricane Eta; these are *raw data* from the Unleash Live contractor AI video system.
- (4) The dip on 4/13/21 is due to a loss of connectivity at all stations, affecting a few stations over the next two days as well.
- (5) The reduction seen beginning 6/1/21 is partly due to the resumption of fares and partly the result of resuming reporting Cubi faregate data rather than video camera counts.
- (6) Periodic (weekly) variations are prominent, since weekday ridership is almost always significantly higher than weekend or holiday ridership.

METRORAIL PARKING PATRONAGE SUMMARY
June 2021

PARK-RIDE LOT	ACTUAL CAPACITY (1)	ACTUAL OCCUPANCY (2)	PERCENT OCCUPANCY
DADELAND SOUTH	1,280		
DADELAND NORTH	1,963		
SOUTH MIAMI	1,081		
UNIVERSITY	260		
DOUGLAS ROAD	150		
COCONUT GROVE	100		
VIZCAYA	120		
CULMER	40		
SANTA CLARA	61		
ALLAPATTAH	74		
EARLINGTON HEIGHTS	361		
BROWNSVILLE	100		
DR. MARTIN LUTHER KING JR. (MDT)	62		
DR. MARTIN LUTHER KING JR. (GARAGE)	631		
NORTHSIDE	197		
HIALEAH	338		
OKEECHOBEE	1,398		
PALMETTO	700		
TOTAL	8,916		

- (1) Number of spaces could vary each week; shown are available spaces during final week of month; the capacities shown here date from March 2020.
(2) Averages rounded to nearest unit; no counts effected in June 2021 due to reassignment of staff as result of SARS-CoV-2 pandemic.

Metromover



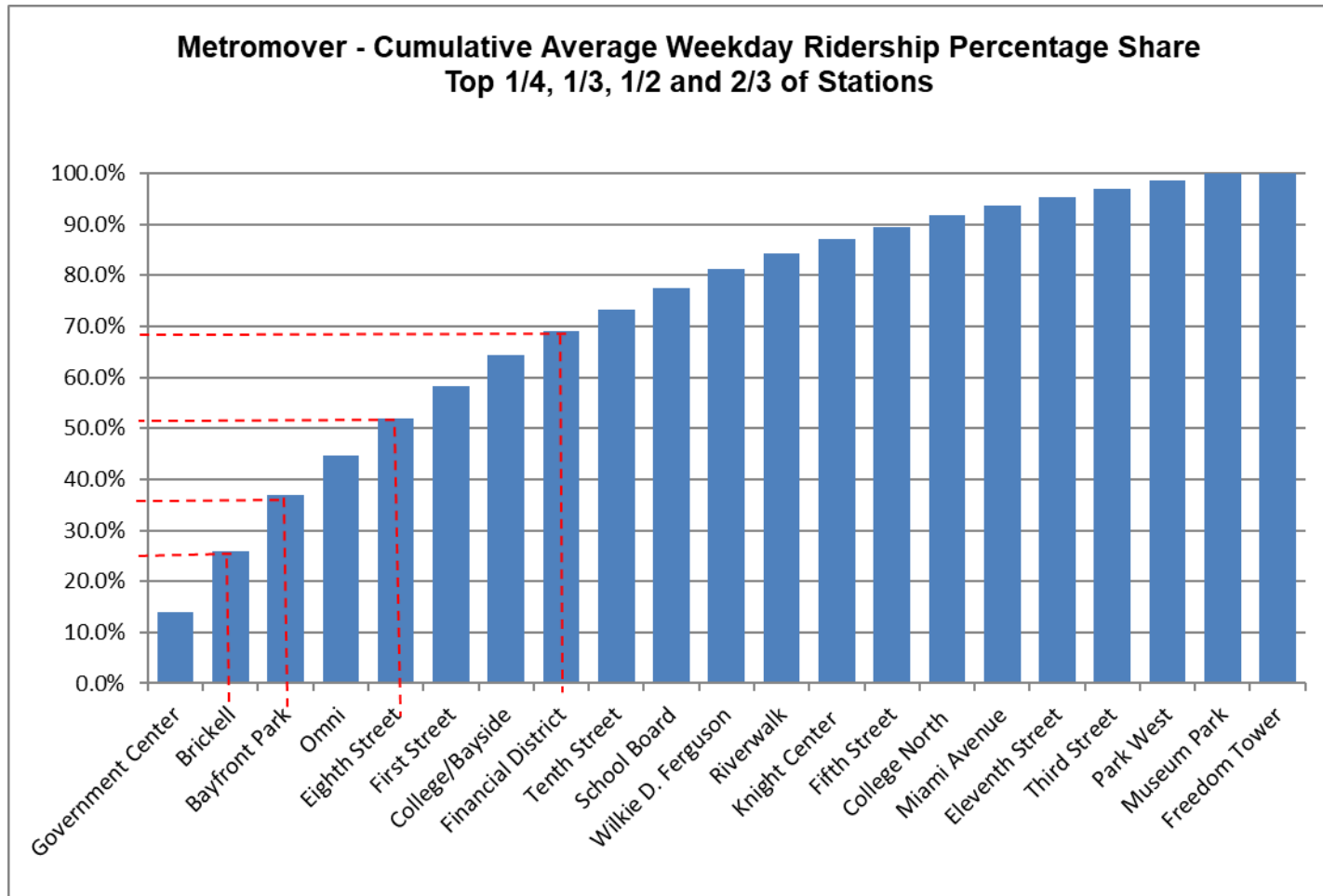
METROMOVER MONTHLY AND AVERAGE DAILY BOARDINGS BY STATION

	Average Weekday	Average Weekday	Percent Change	Average Saturday	Average Saturday	Percent Change	Average Sunday	Average Sunday	Percent Change	Juneteenth	Total Monthly	Total Monthly	Percent Change
STATIONS	Jun-21	Jun-20	21 vs 20	Jun-21	Jun-20	21 vs 20	Jun-21	Jun-20	21 vs 20	Jun-21	Jun-21	Jun-20	21 vs 20
School Board	519	403	28.7%	386	321	20.3%	336	282	19.3%	429	13,491	11,282	19.6%
Omni	975	554	76.0%	766	491	56.0%	666	398	67.3%	964	25,744	15,747	63.5%
Museum Park	181	61	196.8%	434	71	509.1%	204	68	200.0%		3,902	1,901	105.3%
Eleventh Street	217	95	129.0%	116	105	11.0%	91	59	56.1%	212	5,508	2,738	101.2%
Park West	202	139	45.3%	144	128	12.9%	142	93	53.1%		3,915	3,934	-0.5%
Freedom Tower		121			102			52				3,285	
Government Center	1,748	1,026	70.3%	815	619	31.8%	670	499	34.2%	1,639	44,287	27,046	63.7%
Miami Avenue	238	250	-4.9%	193	210	-8.1%	136	198	-31.1%		4,843	7,125	-32.0%
Third Street	204	159	28.3%	156	164	-4.4%	125	148	-15.5%	201	5,326	4,743	12.3%
Knight Center	354	215	64.7%	165	155	6.8%	155	101	53.1%	328	8,729	5,756	51.7%
Bayfront Park	1,390	776	79.0%	1,029	681	51.2%	1,038	552	88.0%	1,370	36,750	22,013	66.9%
First Street	800	425	88.1%	701	257	173.0%	615	175	251.4%		12,518	11,085	12.9%
College/Bayside	758	250	203.6%	725	207	250.7%	600	133	352.0%	766	10,431	6,852	52.2%
College North	287	144	98.5%	155	96	62.3%	117	82	41.6%		5,989	3,887	54.1%
Wilkie D. Ferguson	466	251	85.4%	306	272	12.3%	254	236	7.3%		10,433	7,561	38.0%
Riverwalk	377	113	232.9%	224	102	119.3%	230	70	231.4%	256	9,530	3,176	200.1%
Fifth Street	300	175	71.0%	248	133	87.1%	183	106	73.8%	234	7,823	4,810	62.6%
Eighth Street	914	475	92.2%	690	442	56.0%	634	360	76.2%	427	20,438	13,667	49.5%
Tenth Street	525	270	94.3%	366	205	78.7%	354	177	100.4%	502	13,689	7,471	83.2%
Brickell	1,483	1,082	37.0%	1,266	1,009	25.4%	994	820	21.2%		31,430	31,127	1.0%
Financial District	593	313	89.3%	392	220	78.2%	307	165	85.8%		11,369	8,431	34.8%
TOTAL	12,529	7,300	71.6%	9,278	5,987	55.0%	7,850	4,772	64.5%	7,328	286,145	203,637	40.5%

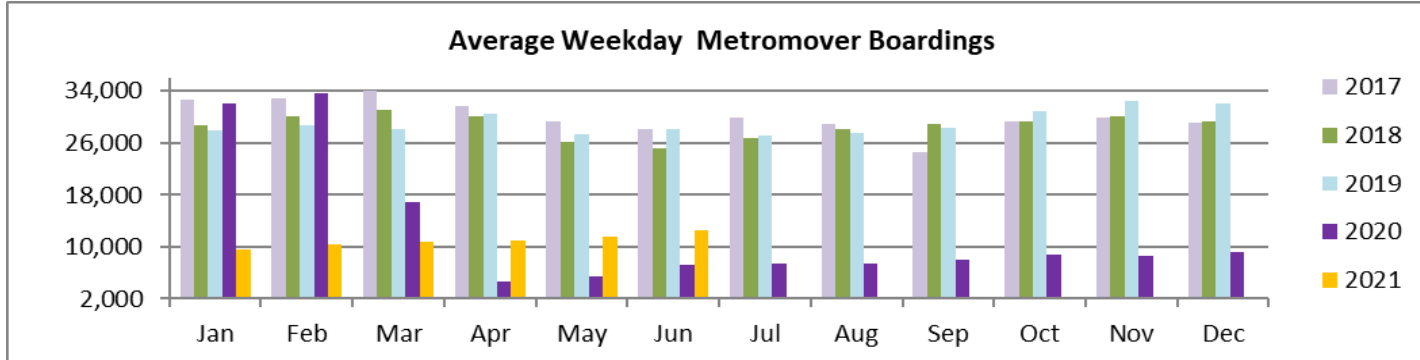
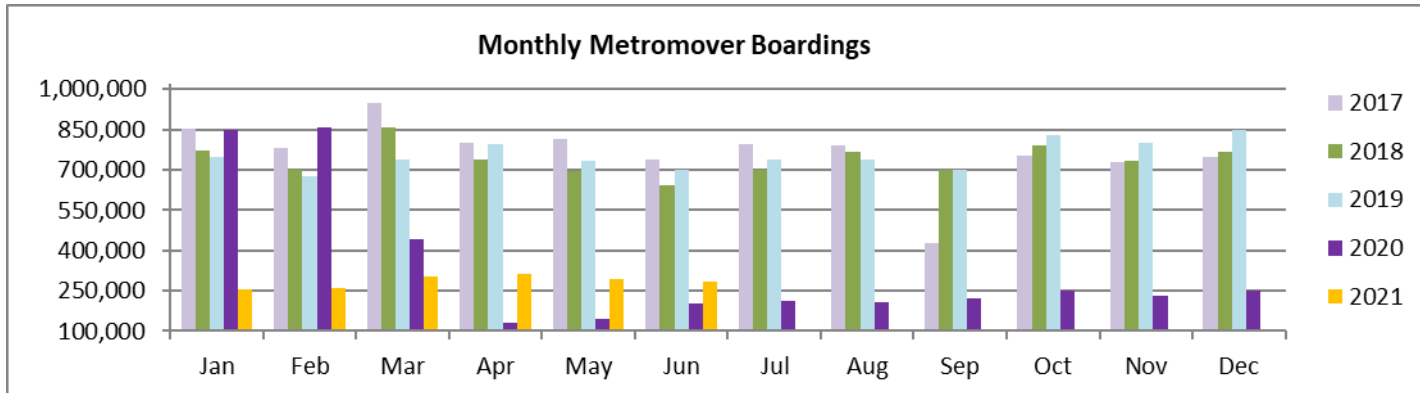
(1) Freedom Tower Station was closed for construction throughout June 2021.

(*) APC Vendor UTA's system did not report boardings data at several stations on several days in June 2021; the average daily ridership calculations take this into account.

METROMOVER CUMULATIVE PERCENTAGE RIDERSHIP SHARE



TOTAL MONTHLY AND AVERAGE WEEKDAY RIDERSHIP YEAR OVER YEAR COMPARISON CHARTS – METROMOVER



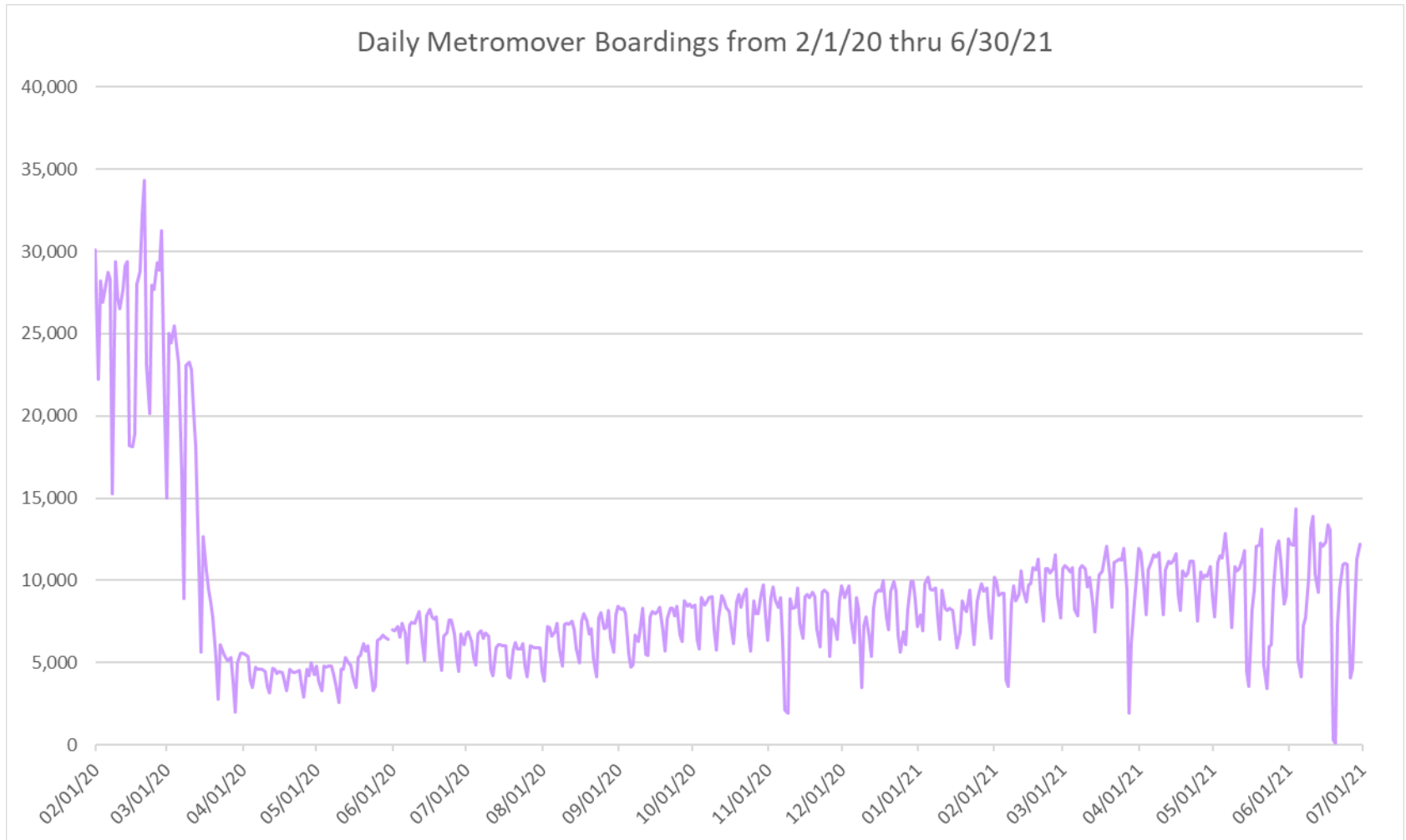
**“TOP 5 / BOTTOM 5” MOVER STATIONS AVERAGE WEEKDAY RIDERSHIP PERFORMANCE
YEAR OVER YEAR COMPARISONS**

Station	Jun-21	Jun-20	Absolute Delta (1)	Percent Delta
Government Center	1,748	1,026	722	70.3%
Bayfront Park	1,390	776	613	79.0%
College/Bayside	758	250	508	203.6%
Eighth Street	914	475	438	92.2%
Omni	975	554	421	76.0%
Miami Avenue	238	250	-12	-4.9%
Third Street	204	159	45	28.3%
Park West	202	139	63	45.3%
School Board	519	403	116	28.7%
Museum Park	181	61	120	196.8%

(1) Averages rounded to the nearest boarding.

(†) Nearly all Metromover stations reporting YOY gains in June 2021, as June 2020 was the fourth month showing clear reduction effects, the third largest to-date, on ridership from the SARS-CoV-2 pandemic.

DAILY METROMOVER RIDERSHIP SINCE FEBRUARY 1, 2020



- (1) National Emergency was declared on 3/13/20 as a result of the SARS-CoV-2 pandemic.
- (2) There was no Metrobus, Metrorail and Metromoverservice on 5/31/20, as a safety precaution.
- (3) The dip at the start of the second week of November 2020 is due to Hurricane Eta; these are *raw data* from the UTA contractor APC system. Other more recent dips are due to various station closures (mostly on weekends) for system maintenance purposes.
- (4) Periodic (weekly) variations are prominent, since weekday ridership is almost always significantly higher than weekend or holiday ridership.

Special Transportation Services

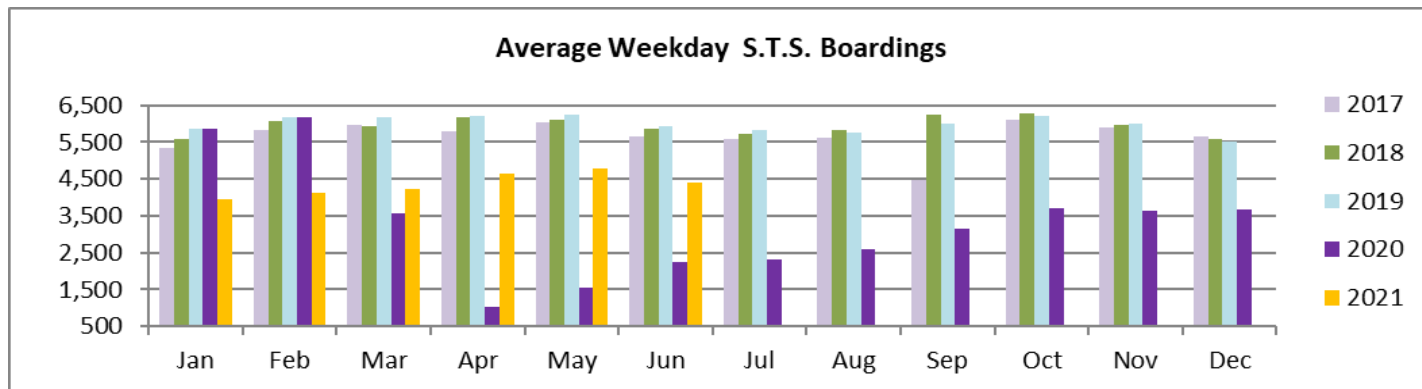
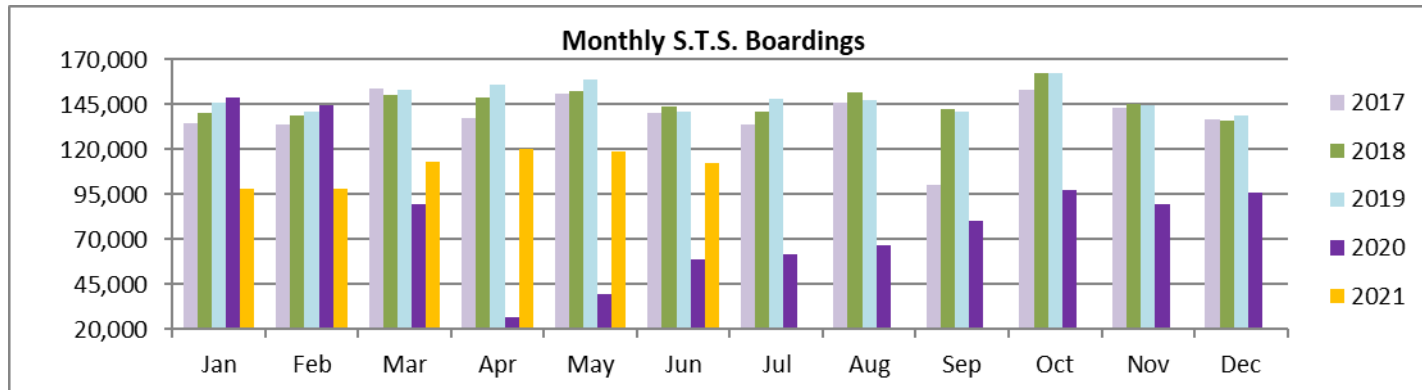


STS MONTHLY AND AVERAGE DAILY BOARDINGS June 2021

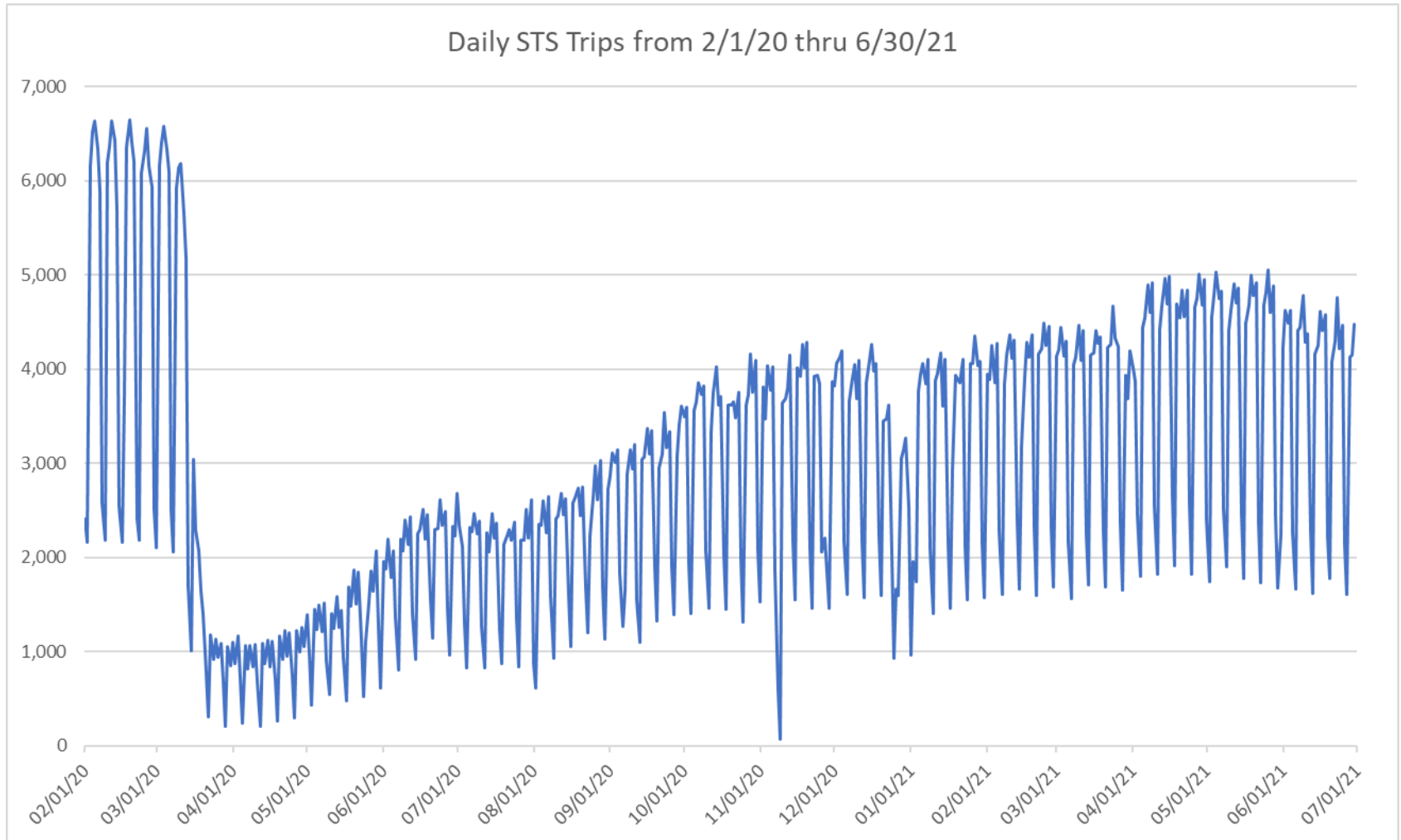
Measure	timeline	Ambulatory	Wheelchair	Total Clients (*)
Average Weekday	Jun-21	3,620	782	4,402
Average Saturday	Jun-21	1,821	404	2,225
Average Sunday	Jun-21	1,416	250	1,666
Total Monthly	Jun-21	92,576	19,821	112,397
Average Weekday	Jun-20	1,808	440	2,248
Average Saturday	Jun-20	1,173	278	1,450
Average Sunday	Jun-20	819	141	959
Total Monthly	Jun-20	47,741	11,352	59,093
Average Weekday	Jun-19	4,755	1,180	5,935
Average Saturday	Jun-19	1,935	536	2,470
Average Sunday	Jun-19	1,574	480	2,054
Total Monthly	Jun-19	112,637	28,683	141,320
% Change Current v.s. Jun 2020 Weekday		100.2%	77.8%	95.8%
% Change Current v.s. Jun 2020 Saturday		55.3%	45.4%	53.4%
% Change Current v.s. Jun 2020 Sunday		73.0%	77.9%	73.7%
% Change Current v.s. Jun 2020 Month Total		93.9%	74.6%	90.2%
% Change Current v.s. Jun 2019 Weekday		-23.9%	-33.7%	-25.8%
% Change Current v.s. Jun 2019 Saturday		-5.9%	-24.6%	-9.9%
% Change Current v.s. Jun 2019 Sunday		-10.0%	-47.9%	-18.9%
% Change Current v.s. Jun 2019 Month Total		-17.8%	-30.9%	-20.5%

(*) Trip count data provided by STS contractor.

TOTAL MONTHLY AND AVERAGE WEEKDAY RIDERSHIP YEAR OVER YEAR COMPARISON CHARTS – SPECIAL TRANSPORTATION SERVICES (S.T.S.)

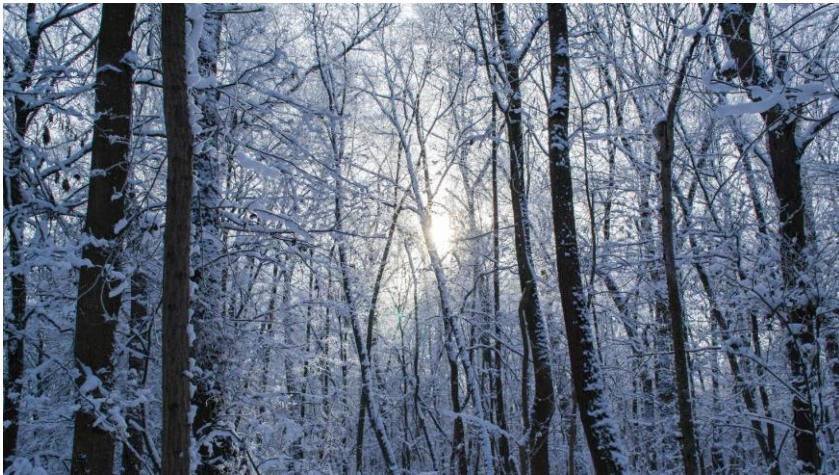


DAILY STS RIDERSHIP SINCE FEBRUARY 1, 2020

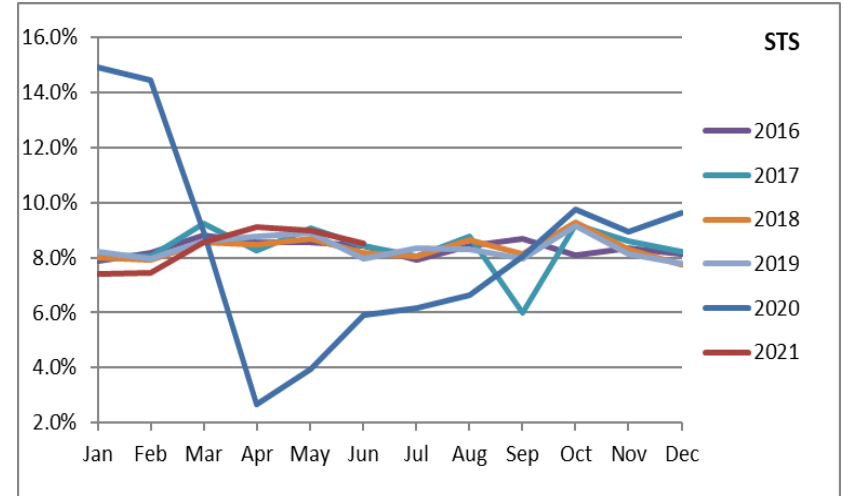
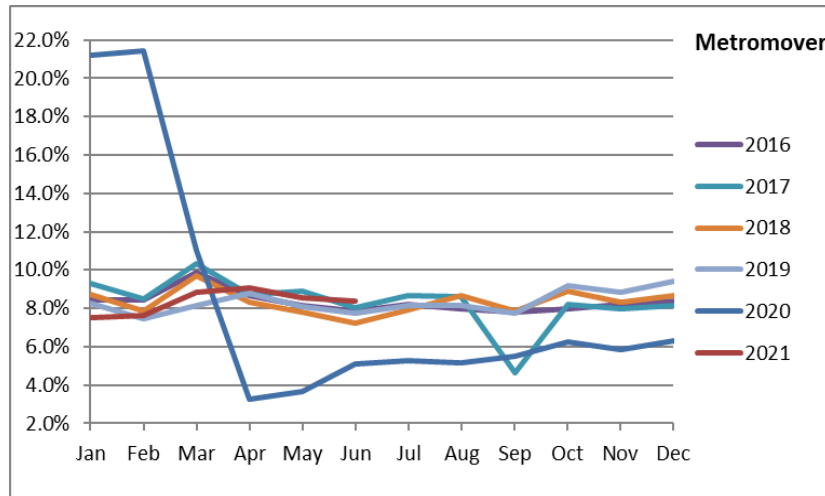
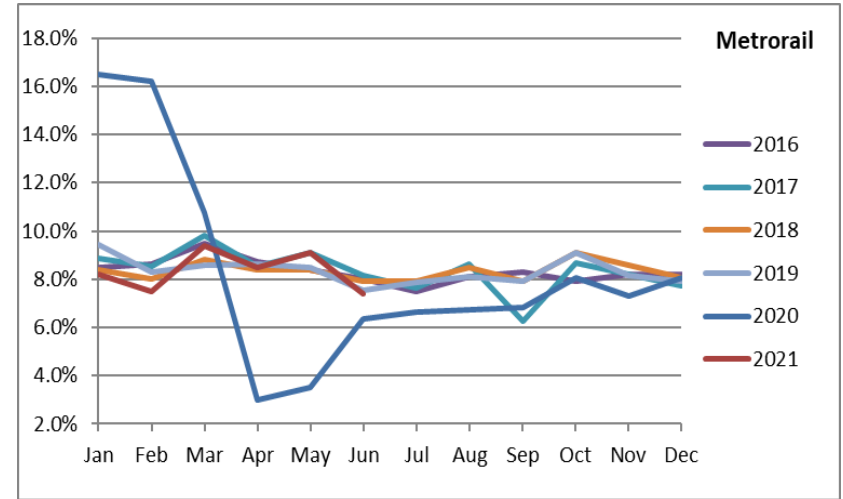
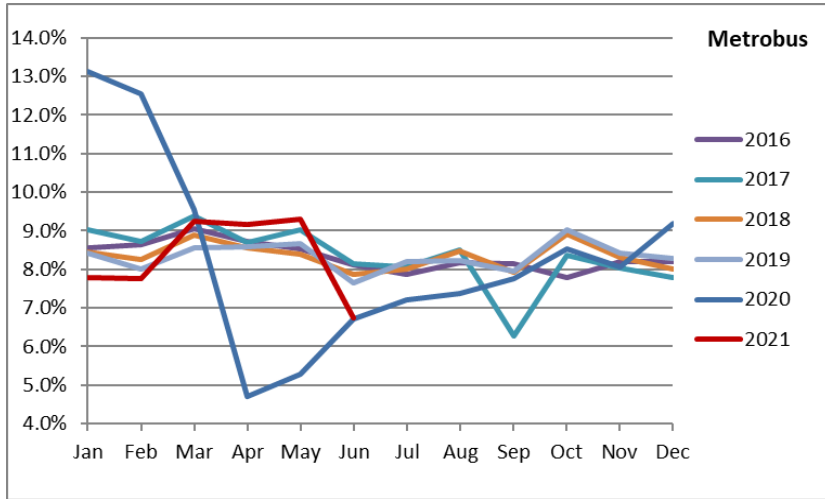


- (1) National Emergency was declared on 3/13/20 as a result of the SARS-CoV-2 pandemic.
- (2) The dip at the start of the second week of November 2020 is due to Hurricane Eta.
- (3) Periodic (weekly) variations are prominent, since weekday ridership is almost always significantly higher than weekend or holiday ridership.

Ridership Seasonality



RIDERSHIP SEASONALITY – PERCENT RIDERSHIP SHARE BY MONTH AND CALENDAR YEAR FOR EACH MODE



Note: the prominent dips seen in the fall of 2017 and beginning in the spring of 2020 are due to Hurricane Irma and the SARS-CoV-2 pandemic, respectively. Reductions in Bus and Rail ridership share seen beginning in June 2021 are due to reinstatement of fares as well changes in reporting tools and datasets, as discussed earlier in this report.