



## TRANSPORTATION AND PUBLIC WORKS

### RIDERSHIP TECHNICAL REPORT

*Division of Performance and Materials Management*



October 2021

# Table of Contents

<i>Table of Contents</i>	2-3
<b>All Modes Overview</b>	<b>4</b>
Total Monthly Weekday, Saturday and Sunday Monthly Boardings By Mode	5
Average Weekday, Saturday and Sunday Boardings by Mode	6
Metrobus Total Monthly Ridership Comparisons by Fiscal Year	7
Metrorail Total Monthly Ridership Comparisons by Fiscal Year	8
Metromover Total Monthly Ridership Comparisons by Fiscal Year	9
STS Total Monthly Ridership Comparisons by Fiscal Year	10
All-Modes Combined Total Monthly Ridership Comparisons By Fiscal Year	11
All Modes Combined Total Monthly and Average Weekday Ridership – Year over Year Comparison Charts	12
Average Weekday Ridership – Modal Splits	13
Daily Ridership for All Modes Combined since February 1, 2020	14
 <b>Metrobus</b>	 <b>15</b>
Metrobus Average Weekday Boardings by Route	16-18
Metrobus Average Saturday Boardings by Route	19-20
Metrobus Average Sunday Boardings by Route	21-22
Metrobus Monthly Total Boardings by Route	23-25
Metrobus Holiday Boardings by Route	26
Year-over-Year Bus Ridership by Route Service Type	27-28
Bus Routes as Ranked by Percentage of Average Weekday Ridership	29
Metrobus Cumulative Percentage Average Weekday Ridership Share by Route (Top 75%)	30
Total Monthly and Average Weekday Rail Ridership – Year over Year Comparison Charts	31
Bus “Top 5 / Bottom 5” Routes Average Weekday Ridership Performance	32
Daily Metrobus Ridership since February 1, 2020	33
Metrobus Parking Patronage Summary	34

## Table of Contents (continued)

<b>Metrorail</b>	<b>35</b>
Metrorail Average Weekday Boardings by Station	36
Metrorail Average Saturday Boardings by Station	37
Metrorail Average Sunday Boardings by Station	38
Metrorail Total Monthly Boardings by Station	39
Metrorail Holiday Boardings	40
Metrorail Cumulative Percentage Average Weekday Ridership Share	41
Total Monthly and Average Weekday Rail Ridership – Year over Year Comparison Charts	42
“Top 5 / Bottom 5” Stations Average Weekday Ridership Performance	43
Daily Metrorail Ridership since February 1, 2020	44
Metrorail Parking Patronage Summary	45
 <b>Metromover</b>	 <b>46</b>
Monthly and Average Daily Mover Boardings by Station	47
Metromover Cumulative Percentage Average Weekday Ridership Share	48
Total Monthly and Average Weekday Mover Ridership – Year over Year Comparison Charts	49
“Top 5 / Bottom 5” Stations Average Weekday Ridership Performance	50
Daily Metromover Ridership since February 1, 2020	51
 <b>Special Transportation Services (STS)</b>	 <b>52</b>
STS Monthly and Average Daily Boardings	53
Total Monthly and Average Weekday STS Ridership – Year over Year Comparison Charts	54
Daily STS Ridership since February 1, 2020	55
 <b>Ridership Seasonality</b>	 <b>56</b>
Ridership Seasonality – Percent Ridership Share by Month and Calendar year for Each Mode	57

## All Modes Overview



## TOTAL MONTHLY WEEKDAY, SATURDAY AND SUNDAY BOARDINGS BY MODE October 2021

TRAVEL MODE	MONTH'S TOTAL WEEKDAYS RIDERSHIP	MONTH'S TOTAL SATURDAYS RIDERSHIP	MONTH'S TOTAL SUNDAYS RIDERSHIP	TOTAL MONTHLY RIDERSHIP	% CHANGE vs Oct 2020 TOTAL MONTH RIDERSHIP
<b>METROBUS</b> (1)	2,470,850	347,200	263,107	3,081,157	9.8%
<b>METRO RAIL</b> (2)	710,666	75,831	57,886	844,383	9.7%
<b>METROMOVER</b> (3)	290,180	54,477	44,408	389,065	55.6%
<b>STS PARATRANSIT</b> (4)	96,923	10,337	7,862	115,122	18.2%
<b>TOTAL</b>	<b>3,568,619</b>	<b>487,845</b>	<b>373,263</b>	<b>4,429,727</b>	<b>12.9%</b>

(\*) October 11, 2021 - (Columbus Day Holiday) ridership was as follows:

Metrobus	112,403
Metrorail	29,975
Metromover	12,942
STS	4,018

- (1) Metrobus fares resumed on June 1, 2021, following a 14-month period of fare-free rides as a result of the SARS-CoV-2 pandemic. The NextFare System farebox data replaced the bus automatic passenger counter data as ridership data of record starting on that date.
- (2) Metrorail fares resumed on June 1, 2021, following a 14-month period of fare-free rides as a result of the SARS-CoV-2 pandemic. The NextFare System faregate data replaced the video data as ridership data of record starting on that date.
- (3) Beginning March 13, 2020 (day of National Emergency Declaration due to SARS-CoV-2 pandemic), only raw data from Metromover automatic passenger counters is reported; no estimates are performed after March 13, 2020.
- (4) Paratransit ridership data as reported by the contractor.

**AVERAGE WEEKDAY, SATURDAY AND SUNDAY BOARDINGS BY MODE**  
**October 2021**

<b>Travel Mode</b>	<b>Average Weekday (*)</b>	<b>Average Saturday</b>	<b>Average Sunday</b>	<b>% Change Oct 2020 Weekday</b>	<b>% Change Oct 2020 Saturday</b>	<b>% Change Oct 2020 Sunday</b>
<b>METROBUS</b>	117,796	69,520	52,688	14.7%	4.7%	-1.5%
<b>METRORAIL</b>	34,035	15,166	11,577	17.9%	-9.8%	-12.3%
<b>METROMOVER</b>	14,284	11,458	9,291	63.1%	63.9%	58.0%
<b>STS PARATRANSIT</b>	4,615	2,067	1,572	24.4%	2.1%	11.5%
<b>Totals</b>	<b>170,730</b>	<b>98,212</b>	<b>75,129</b>	<b>18.5%</b>	<b>6.5%</b>	<b>1.5%</b>

(\*) Average weekday ridership includes Columbus Day for Metrobus and STS but excludes it for Metrorail and Metromover.

(\*\*) Average ridership is calculated and published only for those days and stations with nontrivial amounts of reported data.

## METROBUS TOTAL MONTHLY RIDERSHIP COMPARISONS BY FISCAL YEAR

Bus	FY 18	FY 19	Variance 18 to 19	FY 20	Variance 19 to 20	FY 21	FY 22	Variance 21 to 22	Variance 19 to 22	Variance 18 to 22
<b>Oct</b>	4,709,590	4,554,886	-3.3%	4,507,012	-1.1%	2,805,139	3,081,157	9.8%	-32.4%	-34.6%
<b>Nov</b>	4,522,250	4,245,535	-6.1%	4,197,225	-1.1%	2,651,290				
<b>Dec</b>	4,380,099	4,081,581	-6.8%	4,126,990	1.1%	3,022,530				
<b>Jan</b>	4,307,001	4,195,911	-2.6%	4,316,998	2.9%	3,082,746				
<b>Feb</b>	4,208,811	3,994,019	-5.1%	4,123,083	3.2%	3,076,966				
<b>Mar</b>	4,534,564	4,266,768	-5.9%	3,136,162	-26.5%	3,660,639				
<b>Apr</b>	4,360,997	4,291,135	-1.6%	1,544,316	-64.0%	3,625,048				
<b>May</b>	4,277,628	4,330,922	1.2%	1,734,609	-59.9%	3,683,343				
<b>Jun</b>	4,009,340	3,823,863	-4.6%	2,210,725	-42.2%	2,672,570				
<b>Jul</b>	4,080,664	4,094,906	0.3%	2,366,749	-42.2%	2,769,907				
<b>Aug</b>	4,326,980	4,109,613	-5.0%	2,422,014	-41.1%	2,843,552				
<b>Sep</b>	4,041,992	3,971,220	-1.8%	2,546,923	-35.9%	2,877,110				
<b>FY Total</b>	<b>51,759,916</b>	<b>49,960,359</b>	<b>-3.5%</b>	<b>37,232,806</b>	<b>-25.5%</b>	<b>36,770,840</b>				

## METRORAIL TOTAL MONTHLY RIDERSHIP COMPARISONS BY FISCAL YEAR

Rail	FY 18	FY 19	Variance 18 to 19	FY 20	Variance 19 to 20	FY 21	FY 22	Variance 21 to 22	Variance 19 to 22	Variance 18 to 22
<b>Oct</b>	1,708,564	1,757,225	2.8%	1,643,166	-6.5%	769,525	844,383	9.7%	-51.9%	-50.6%
<b>Nov</b>	1,609,888	1,656,929	2.9%	1,469,448	-11.3%	699,492				
<b>Dec</b>	1,517,341	1,553,804	2.4%	1,433,928	-7.7%	769,194				
<b>Jan</b>	1,615,576	1,708,695	5.8%	1,576,340	-7.7%	799,119				
<b>Feb</b>	1,545,581	1,501,458	-2.9%	1,549,118	3.2%	730,792				
<b>Mar</b>	1,700,714	1,554,851	-8.6%	1,027,319	-33.9%	917,097				
<b>Apr</b>	1,619,890	1,559,446	-3.7%	287,803	-81.5%	827,414				
<b>May</b>	1,618,504	1,531,597	-5.4%	337,696	-78.0%	887,111				
<b>Jun</b>	1,524,311	1,359,966	-10.8%	608,758	-55.2%	723,469				
<b>Jul</b>	1,527,380	1,419,158	-7.1%	632,964	-55.4%	722,159				
<b>Aug</b>	1,632,471	1,463,646	-10.3%	641,275	-56.2%	749,578				
<b>Sep</b>	1,530,088	1,427,726	-6.7%	654,244	-54.2%	795,749				
<b>Total</b>	<b>19,150,308</b>	<b>18,494,501</b>	<b>-3.4%</b>	<b>11,862,059</b>	<b>-35.9%</b>	<b>9,390,699</b>				



## METROMOVER TOTAL MONTHLY RIDERSHIP COMPARISONS BY FISCAL YEAR

Mover	FY 18	FY 19	Variance 18 to 19	FY 20	Variance 19 to 20	FY 21	FY 22	Variance 21 to 22	Variance 19 to 22	Variance 18 to 22
Oct	751,323	790,533	5.2%	831,234	5.1%	250,044	389,065	55.6%	-50.8%	-48.2%
Nov	729,519	735,198	0.8%	799,632	8.8%	232,422				
Dec	748,797	767,239	2.5%	849,832	10.8%	251,019				
Jan	772,122	746,728	-3.3%	847,773	13.5%	255,968				
Feb	698,107	675,160	-3.3%	855,398	26.7%	260,332				
Mar	859,143	737,814	-14.1%	441,200	-40.2%	302,502				
Apr	740,036	795,696	7.5%	130,549	-83.6%	310,772				
May	694,106	734,645	5.8%	146,454	-80.1%	292,922				
Jun	641,675	701,318	9.3%	203,637	-71.0%	286,145				
Jul	700,462	739,814	5.6%	210,596	-71.5%	368,847				
Aug	768,728	739,785	-3.8%	205,995	-72.2%	344,319				
Sep	698,505	699,879	0.2%	219,696	-68.6%	331,915				
<b>Total</b>	<b>8,802,523</b>	<b>8,863,809</b>	<b>0.7%</b>	<b>5,741,996</b>	<b>-35.2%</b>	<b>3,487,207</b>				

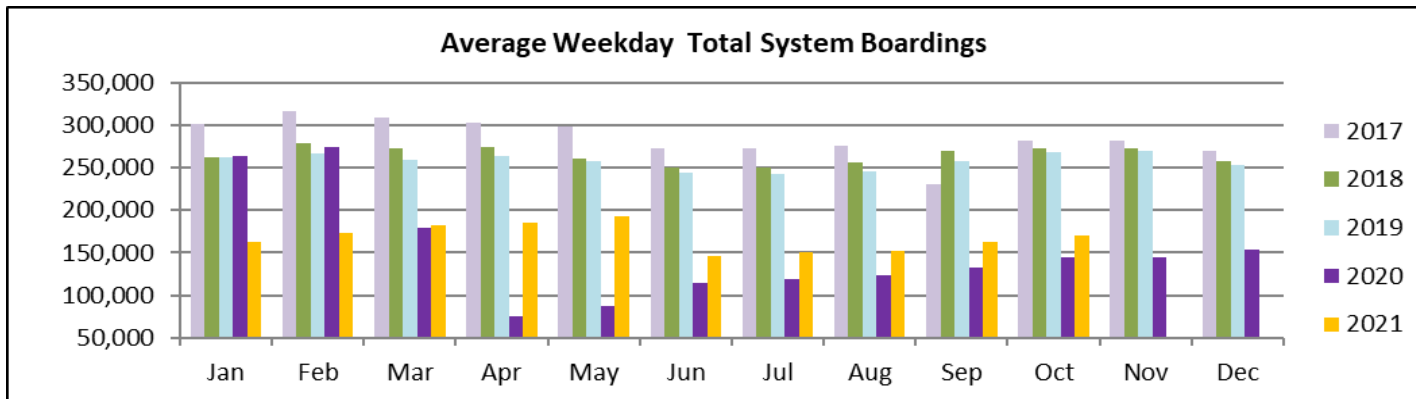
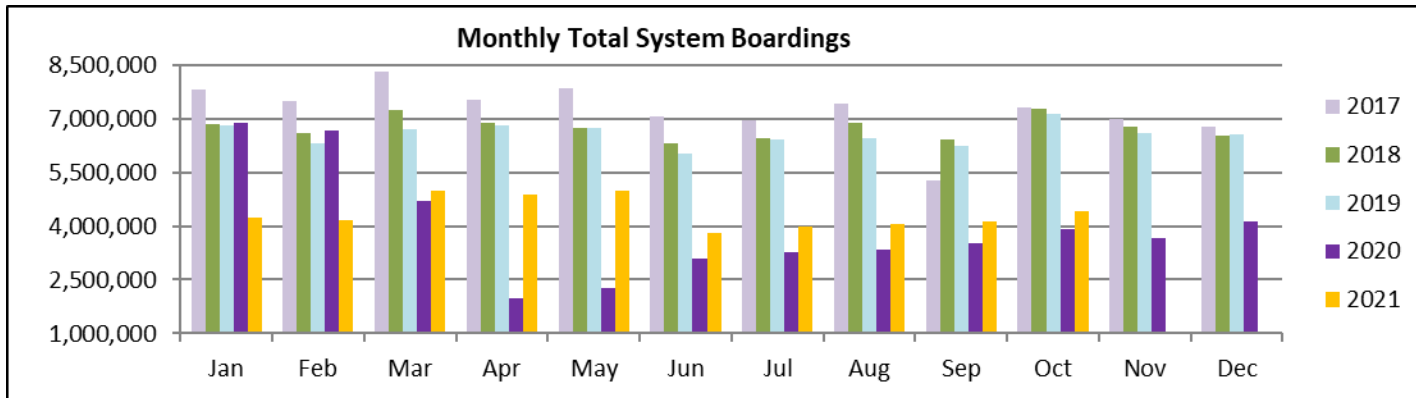
## SPECIAL TRANSPORTATION SERVICES (STS) TOTAL MONTHLY RIDERSHIP COMPARISONS BY FISCAL YEAR

STS	FY 18	FY 19	Variance 18 to 19	FY 20	Variance 19 to 20	FY 21	FY 22	Variance 21 to 22	Variance 19 to 22	Variance 18 to 22
Oct	153,409	162,564	6.0%	162,704	0.1%	97,388	115,122	18.2%	-29.2%	-25.0%
Nov	143,375	145,653	1.6%	144,366	-0.9%	89,387				
Dec	136,955	136,110	-0.6%	138,642	1.9%	96,366				
Jan	140,042	146,268	4.4%	149,114	1.9%	97,928				
Feb	139,032	141,396	1.7%	144,392	2.1%	98,285				
Mar	150,384	153,191	1.9%	89,634	-41.5%	112,930				
Apr	148,879	155,808	4.7%	26,877	-82.7%	120,122				
May	152,164	158,665	4.3%	39,654	-75.0%	118,636				
Jun	143,653	141,320	-1.6%	59,093	-58.2%	112,397				
Jul	141,020	148,232	5.1%	61,765	-58.3%	110,059				
Aug	151,750	147,331	-2.9%	66,563	-54.8%	110,766				
Sep	142,360	141,387	-0.7%	80,346	-43.2%	115,406				
<b>Total</b>	<b>1,743,023</b>	<b>1,777,925</b>	<b>2.0%</b>	<b>1,163,150</b>	<b>-34.6%</b>	<b>1,279,670</b>				

## ALL-MODES COMBINED TOTAL MONTHLY RIDERSHIP COMPARISONS BY FISCAL YEAR

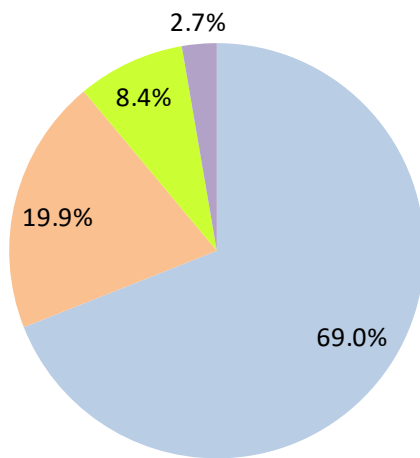
All Modes Month	Variances										
	FY 18	FY 19	FY 20	FY 21	FY 22	18 TO 19	19 TO 20	20 TO 21	21 TO 22	19 TO 22	18 TO 22
<b>Oct</b>	7,322,886	7,265,208	7,144,116	3,922,096	4,429,727	-0.8%	-1.7%	-45.1%	12.9%	-39.0%	-39.5%
<b>Nov</b>	7,005,032	6,783,315	6,610,671	3,672,591		-3.2%	-2.5%	-44.4%			
<b>Dec</b>	6,783,192	6,538,734	6,549,392	4,139,109		-3.6%	0.2%	-36.8%			
<b>Jan</b>	6,834,741	6,797,602	6,890,225	4,235,761		-0.5%	1.4%	-38.5%			
<b>Feb</b>	6,591,531	6,312,033	6,671,991	4,166,375		-4.2%	5.7%	-37.6%			
<b>Mar</b>	7,244,805	6,712,624	4,694,315	4,993,168		-7.3%	-30.1%	6.4%			
<b>Apr</b>	6,869,802	6,802,085	1,989,545	4,883,356		-1.0%	-70.8%	145.5%			
<b>May</b>	6,742,402	6,755,829	2,258,413	4,982,012		0.2%	-66.6%	120.6%			
<b>Jun</b>	6,318,979	6,026,467	3,082,213	3,794,581		-4.6%	-48.9%	23.1%			
<b>Jul</b>	6,449,526	6,402,110	3,272,074	3,970,972		-0.7%	-48.9%	21.4%			
<b>Aug</b>	6,879,929	6,460,375	3,335,847	4,048,215		-6.1%	-48.4%	21.4%			
<b>Sep</b>	6,412,945	6,240,212	3,501,209	4,120,180		-2.7%	-43.9%	17.7%			
<b>FY Total</b>	<b>81,455,770</b>	<b>79,096,594</b>	<b>56,000,011</b>	<b>50,928,416</b>		<b>-2.9%</b>	<b>-29.2%</b>	<b>-9.1%</b>			

# **TOTAL MONTHLY AND AVERAGE WEEKDAY RIDERSHIP YEAR OVER YEAR COMPARISON CHARTS – ALL MODES COMBINED**



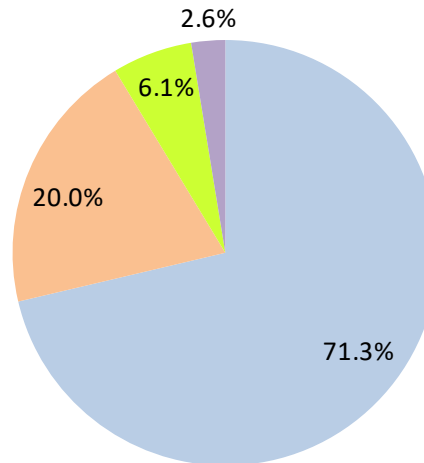
## AVERAGE WEEKDAY RIDERSHIP - MODAL SPLITS

October 2021



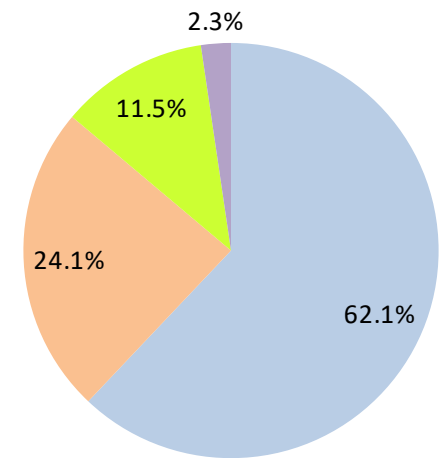
boardings

October 2020



boardings

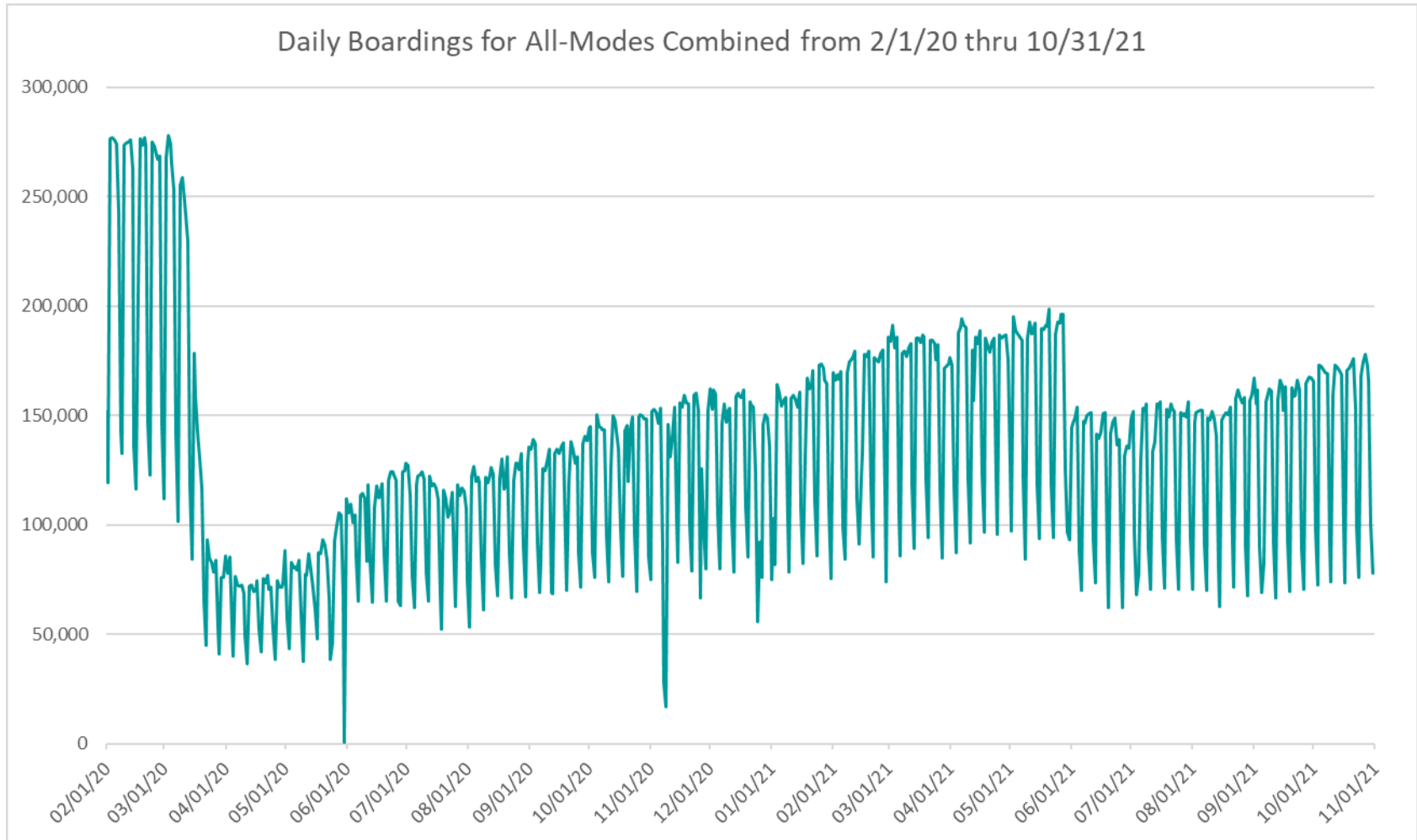
October 2019



boardings



## DAILY RIDERSHIP FOR ALL MODES COMBINED SINCE FEBRUARY 1, 2020



- (1) National Emergency was declared on 3/13/20 as a result of the SARS-CoV-2 pandemic.
- (2) There was no Metrobus, Metrorail and Metromover service on 5/31/20, as a safety precaution.
- (3) The dip at the start of the second week of November 2020 is due to Hurricane Eta.
- (4) The reduction seen beginning 6/1/21 is partly due to the resumption of fares for bus and rail, and partly the result of having resumed reporting Cubic farebox data rather than bus APC counts, as well as Cubic rail faregate counts instead of video camera counts on that date.
- (5) Periodic (weekly) variations are prominent, since weekday ridership is almost always significantly higher than weekend or holiday ridership.

## Metrobus



# METROBUS AVERAGE WEEKDAY BOARDINGS BY ROUTE (†)

Route weekdays	Average Weekday	Average Weekday	Percent Change	Average Weekday	Percent Change	Average Weekday	Percent Change	Average Weekday	Percent Change
	Oct-21	Oct-20	YOY	Feb-20	Current vs Feb-20	Sep-21	MOM	Oct-19	YO2Y
1 (*)	179	217	-17.3%	184	-2.5%	181	-0.8%	268	-33.1%
2	2,172	1,733	25.3%	3,102	-30.0%	2,088	4.0%	2,529	-14.1%
3	4,109	3,394	21.1%	5,137	-20.0%	4,070	1.0%	4,945	-16.9%
7	2,536	2,148	18.1%	3,501	-27.6%	2,452	3.4%	3,299	-23.1%
8	3,700	2,877	28.6%	3,909	-5.3%	3,508	5.5%	3,804	-2.7%
9	4,780	4,295	11.3%	5,528	-13.5%	4,725	1.2%	5,426	-11.9%
10	1,481	1,069	38.5%	2,482	-40.3%	1,467	0.9%	2,219	-33.3%
11	6,841	5,124	33.5%	7,292	-6.2%	6,404	6.8%	7,135	-4.1%
12	1,939	2,065	-6.1%	2,779	-30.2%	1,762	10.1%	2,767	-29.9%
16	1,185	1,073	10.4%	1,862	-36.4%	1,124	5.5%	1,761	-32.7%
17	2,432	2,387	1.9%	3,878	-37.3%	2,342	3.8%	3,837	-36.6%
19	966	818	18.1%	1,542	-37.4%	907	6.5%	1,593	-39.4%
21	1,220	1,539	-20.7%	1,817	-32.8%	1,149	6.2%	1,856	-34.3%
22	2,430	1,887	28.8%	3,640	-33.2%	2,340	3.9%	3,773	-35.6%
24 - Coral Way Limited	790	1,221	-35.3%	1,340	-41.0%	843	-6.4%	1,795	-56.0%
27	5,030	3,913	28.6%	6,972	-27.8%	4,896	2.8%	6,819	-26.2%
29 (*)	293	309	-5.1%	534	-45.2%	289	1.4%	632	-53.6%
31 - BUSWAY LOCAL	614	663	-7.4%	1,089	-43.6%	648	-5.2%	1,081	-43.2%
32	1,547	1,574	-1.7%	2,390	-35.3%	1,471	5.2%	2,432	-36.4%
33	1,063	705	50.7%	1,687	-37.0%	1,005	5.7%	1,771	-40.0%
34 EXPRESS	628	771	-18.6%	2,008	-68.7%	528	18.9%	1,948	-67.8%
35	1,623	1,632	-0.5%	2,421	-32.9%	1,540	5.4%	2,738	-40.7%
36	1,820	1,756	3.7%	2,536	-28.2%	1,659	9.7%	2,463	-26.1%
37	2,720	2,162	25.8%	3,273	-16.9%	2,542	7.0%	3,344	-18.7%
38	4,243	3,877	9.4%	6,361	-33.3%	4,051	4.7%	6,605	-35.8%
39 EXPRESS	173	195	-11.1%	893	-80.6%	156	11.2%	953	-81.8%
40	1,249	1,059	17.9%	1,772	-29.5%	1,193	4.6%	1,705	-26.8%
42	638	513	24.4%	820	-22.3%	626	1.8%	854	-25.3%
46 - LIBERTY CITY CONN. (*)	18	15	26.6%	41	-54.6%	18	1.6%	36	-49.2%
51 - FLAGLER MAX	2,420	1,835	31.9%	3,109	-22.2%	2,281	6.1%	3,125	-22.6%
52	1,098	721	52.2%	1,261	-13.0%	1,006	9.2%	1,267	-13.4%
54	2,077	2,188	-5.1%	2,940	-29.4%	1,978	5.0%	3,022	-31.3%
55 MARLINS SHUTTLE									
56 (*)	284	168	68.5%	354	-19.8%	276	2.9%	363	-21.8%
57	262	229	14.6%	433	-39.5%	236	11.2%	440	-40.4%
62	1,225	1,522	-19.5%	1,815	-32.5%	1,214	0.9%	1,918	-36.2%
71 (*)	459	303	51.7%	711	-35.4%	432	6.3%	686	-33.0%
72 (*)	469	363	29.1%	781	-40.0%	430	9.1%	744	-36.9%

(†) In this table and those which follow, "YOY" stands for "year-over-year", "MOM" for "month-over-month" and "YO2Y" for "year over two years", i.e., current month vs 12 months prior, one month prior, and 24 months prior, respectively.

(\*) Contracted routes

(\*\*) Due to effects from the SARS-CoV-2 pandemic; rides were fare-free beginning March 22, 2020; fares were reinstated on June 1, 2021, in part accounting for the drop in ridership from May 2021.



# METROBUS AVERAGE WEEKDAY BOARDINGS BY ROUTE

Route weekdays	Average Weekday	Average Weekday	Percent Change	Average Weekday	Percent Change	Average Weekday	Percent Change	Average Weekday	Percent Change
	Oct-21	Oct-20	YOY	Feb-20	Current vs Feb-20	Sep-21	MOM	Oct-19	YO2Y
73	1,685	1,245	35.3%	2,124	-20.7%	1,527	10.3%	2,156	-21.9%
75	917	639	43.4%	1,429	-35.8%	922	-0.6%	1,578	-41.9%
77	5,842	4,722	23.7%	7,129	-18.1%	5,375	8.7%	7,342	-20.4%
79 STREET MAX				361				370	
82 - WESTCHESTER CIRC. (*)	37	22	64.2%	62	-40.5%	31	17.1%	58	-37.4%
87	1,054	875	20.4%	1,499	-29.7%	1,000	5.4%	1,496	-29.6%
88	2,012	1,503	33.8%	2,076	-3.1%	1,983	1.4%	2,058	-2.3%
93 - BISCAYNE MAX	1,935	1,480	30.7%	3,334	-42.0%	1,809	6.9%	3,339	-42.0%
95 EXPRESS	330	353	-6.5%	1,690	-80.5%	307	7.4%	1,875	-82.4%
99	1,082	910	18.9%	1,473	-26.5%	1,074	0.7%	1,471	-26.4%
101 - A (*)	122	97	25.1%	177	-31.1%	121	0.9%	150	-18.5%
102 - B	1,365	531	157.1%	1,778	-23.3%	1,320	3.3%	1,657	-17.6%
103 - C	181	103	75.9%	463	-61.0%	184	-1.6%	422	-57.2%
104	646	357	80.9%	837	-22.9%	586	10.2%	956	-32.5%
105 - E	931	617	50.8%	1,287	-27.7%	855	8.9%	1,205	-22.7%
107 - G	1,134	935	21.3%	1,713	-33.8%	1,125	0.8%	1,698	-33.2%
108 - H	294	235	25.2%	473	-37.7%	284	3.5%	451	-34.8%
110 - J	1,922	1,865	3.1%	2,508	-23.4%	1,833	4.8%	2,616	-26.5%
112 - L	6,965	6,068	14.8%	7,636	-8.8%	6,616	5.3%	7,447	-6.5%
113 - M	374	304	22.9%	866	-56.8%	404	-7.4%	781	-52.1%
115 (*)	149	211	-29.5%	180	-17.5%	136	9.2%	142	4.8%
119 - S	7,120	6,618	7.6%	8,970	-20.6%	6,885	3.4%	8,437	-15.6%
120 - BEACH MAX	4,163	4,240	-1.8%	6,667	-37.6%	3,766	10.5%	6,266	-33.6%
132 TRI-RAIL (DORAL)	13	15	-18.8%	16	-19.5%	10	28.5%	8	66.9%
135	587	690	-14.9%	1,399	-58.1%	531	10.5%	1,333	-56.0%
136	105	71	48.4%	126	-17.1%	105	-0.3%	144	-27.4%
137 - WESTDADE CONN.	1,095	852	28.5%	1,626	-32.7%	1,002	9.3%	1,605	-31.8%
150 - MIAMI BEACH AIRPORT FLYER	839	864	-2.9%	1,867	-55.1%	738	13.6%	1,640	-48.9%
155 - BISCAYNE GARDENS CIRCULATOR (*)	32	33	-4.1%	44	-27.7%	26	21.0%	44	-28.0%
175 - NW MIAMI-DADE EXPRESS				33					
183	2,025	2,117	-4.4%	3,149	-35.7%	2,097	-3.5%	3,018	-32.9%
195 EXPRESS - BROWARD BLVD				372				406	
196 EXPRESS - SHERIDAN ST				383				386	
200 - CUTLER BAY LOCAL (++)	98	63	54.6%	158	-38.1%	1	9663.6%	160	-39.1%
202 - LITTLE HAITI CONN. (*)	47	105	-55.4%	140	-66.4%	72	-35.0%	138	-65.9%
204 KILLIAN KAT				1,071				1,043	

(++) Due to various communications system and process issues, the NextFare System did not capture a portion of the Cutler Bay Local ridership in October 2021 as well.

# METROBUS AVERAGE WEEKDAY BOARDINGS BY ROUTE

Route  weekdays	Average Weekday	Average Weekday	Percent Change	Average Weekday	Percent Change	Average Weekday	Percent Change	Average Weekday	Percent Change
	Oct-21	Oct-20	YOY	Feb-20	Current vs Feb-20	Sep-21	MOM	Oct-19	YO2Y
207 (7st) - LITTLE HAVANA CIRC	763	1,034	-26.2%	1,489	-48.7%	759	0.6%	1,522	-49.8%
208 (8st) - LITTLE HAVANA CIRC	772	1,030	-25.0%	1,308	-40.9%	803	-3.9%	1,433	-46.1%
210 - SKYLAKE CIRC (*)	266	211	26.2%	282	-5.5%	304	-12.4%	283	-5.8%
211 - OVERTOWN CIRC. (*)	83	35	134.8%	58	42.7%	61	36.3%	68	21.3%
212 - SWEETWATER CIRC. (*)	42	21	98.0%	15	183.8%	30	40.9%	38	9.5%
217 - BUNCHE PARK CIRC (*)	69	76	-9.0%	97	-29.2%	52	33.4%	85	-18.7%
238 EAST/WEST CONN.	334	217	54.1%	449	-25.7%	284	17.6%	519	-35.7%
246 - NIGHT OWL	52	1	7516.9%	94	-44.5%	10	406.7%	93	-44.3%
248 - PRINCETON CIRCULATOR (*)	76	71	6.2%	135	-43.8%	62	22.0%	104	-27.1%
252 - CORAL REEF MAX	499	261	91.0%	851	-41.4%	463	7.8%	861	-42.0%
254 - BROWNSVILLE CIRC. (*)	13	11	21.6%	19	-30.1%	33	-59.1%	17	-20.0%
267 - LUDLAM LIMITED (*)	110	88	24.9%	149	-26.3%	110	-0.5%	132	-16.7%
272 SUNSET KAT (*)	320	218	46.9%	550	-41.8%	288	11.4%	551	-41.9%
277 - 7th AVENUE MAX	385	491	-21.6%	683	-43.7%	353	9.0%	627	-38.6%
286 - NORTH POINTE CIRC. (*)	36	35	3.9%	97	-62.9%	36	0.1%	86	-58.1%
287 - SAGA BAY MAX	176	122	45.1%	358	-50.7%	164	7.6%	321	-45.1%
288 - KENDALL CRUISER				762				784	
295 EXPRESS - BROWARD BLVD - CIVIC CENTER				233				236	
296 EXPRESS - SHERIDAN ST - CIVIC CENTER				215				212	
297-27th AVENUE ORANGE MAX	653	759	-13.9%	1,356	-51.9%	674	-3.2%	1,337	-51.2%
301 DADE-MONROE EXPRESS(*)	998	773	29.0%	841	18.6%	991	0.7%	807	23.6%
302 CARD SOUND EXPRESS(*)	71	53	35.4%	86	-17.5%	70	1.8%	70	1.9%
344 (*)	61	66	-8.4%	96	-36.8%	48	26.8%	125	-51.5%
500		35		81				34	
836 EXPRESS	122					119	2.4%		
GREEN HILLS SHUTTLE (*)	5	9	-43.2%	9	-41.7%	6	-12.5%	7	-19.2%
KINGS CREEK SHUTTLE (*)	7	10	-24.5%	13	-44.2%	15	-50.3%	21	-65.5%
SIERRALAKES SHUTTLE (*)	34	17	103.6%	45	-24.0%	18	87.4%	25	36.8%
ROBERT SHARP SHUTTLE (*)	21	20	5.0%	10	121.1%	24	-12.5%	5	337.5%
AHEPA SHUTTLE (*)	18	18	-2.2%	21	-13.3%	21	-15.1%	22	-18.9%
<b>Total</b>	<b>117,796</b>	<b>102,741</b>	<b>14.7%</b>	<b>167,711</b>	<b>-29.8%</b>	<b>112,359</b>	<b>4.8%</b>	<b>166,269</b>	<b>-29.2%</b>

(\*) The following routes are entirely operated under contract: 1, 29, 46, 56, 71, 72, 82, 101-A, 115, 155, 202, 210, 211, 212, 217, 248, 254, 267, 272, 286, 301, 302 and 344, although some supplemental runs may be performed by DTPW. Conversely, a few routes that are nominally run by DTPW may have a few supplemental runs operated by contractors; Dade-Monroe routes 301 and 302 as well as six Lifeline routes are also under contracted operation.

(1) Includes shuttles and those routes which were not run both years.

(2) Several express routes were suspended beginning at the end of March 2020, due to the SARS-CoV-2 pandemic, while other routes had alignment and schedule modifications made to them, in an ongoing effort to optimize service delivery.

# METROBUS AVERAGE SATURDAY BOARDINGS BY ROUTE

Route	Average Saturday	Average Saturday	Percent Change	Average Saturday	Percent Change	Average Saturday	Percent Change	Average Saturday	Percent Change
Saturdays	Oct-21	Oct-20	YOY	Feb-20	Current vs Feb-20	Sep-21	MOM	Oct-19	YO2Y
1 (*)	150	185	-19.2%	215	-30.4%	160	-6.4%	262	-42.9%
2	1,301	1,112	17.1%	1,616	-19.5%	1,381	-5.7%	1,490	-12.7%
3	3,694	3,226	14.5%	5,229	-29.4%	3,519	5.0%	5,352	-31.0%
7	1,685	1,224	37.6%	1,887	-10.7%	1,591	5.9%	1,944	-13.3%
8	1,809	1,941	-6.8%	2,027	-10.8%	1,679	7.7%	2,038	-11.2%
9	2,421	2,494	-2.9%	3,034	-20.2%	2,478	-2.3%	3,230	-25.0%
10	1,576	1,501	5.0%	1,896	-16.9%	1,462	7.8%	1,834	-14.1%
11	4,518	3,717	21.5%	5,182	-12.8%	3,905	15.7%	5,705	-20.8%
16	1,262	1,045	20.7%	1,566	-19.4%	1,022	23.4%	1,488	-15.2%
17	1,575	1,776	-11.3%	2,363	-33.3%	1,665	-5.4%	2,538	-37.9%
22	1,459	1,573	-7.2%	2,084	-30.0%	1,367	6.7%	2,127	-31.4%
24 - Coral Way Limited	458	696	-34.2%	1,165	-60.7%	622	-26.3%	1,213	-62.2%
27	2,884	3,236	-10.9%	4,034	-28.5%	2,900	-0.6%	4,378	-34.1%
31 - BUSWAY LOCAL	640	830	-22.9%	896	-28.5%	536	19.6%	941	-32.0%
32	676	737	-8.2%	1,029	-34.3%	728	-7.1%	1,059	-36.1%
33	668	668	0.0%	951	-29.7%	652	2.5%	1,026	-34.9%
35	1,043	1,012	3.1%	1,372	-24.0%	881	18.4%	1,169	-10.8%
36	940	1,277	-26.4%	1,289	-27.1%	962	-2.3%	1,436	-34.5%
37	1,464	1,544	-5.2%	2,090	-30.0%	1,499	-2.3%	2,336	-37.3%
38	3,290	2,750	19.6%	4,715	-30.2%	3,087	6.6%	4,907	-33.0%
40	466	482	-3.3%	655	-28.8%	449	4.0%	707	-34.0%
42	411	486	-15.4%	552	-25.5%	443	-7.2%	560	-26.6%
52	561	568	-1.2%	686	-18.1%	553	1.6%	693	-19.0%
54	1,316	1,281	2.7%	1,727	-23.8%	1,194	10.2%	1,744	-24.5%
55 MARLINS SHUTTLE									
62	833	1,249	-33.4%	1,343	-38.0%	917	-9.2%	1,400	-40.5%
71 (*)	145	135	7.6%	252	-42.5%	166	-12.5%	269	-46.1%
72 (*)	326	230	41.4%	350	-6.9%	289	12.6%	313	4.0%
73	769	626	22.8%	860	-10.6%	646	19.1%	1,011	-23.9%
75	320	349	-8.5%	468	-31.7%	335	-4.7%	459	-30.3%
77	3,386	2,806	20.7%	4,197	-19.3%	3,152	7.4%	4,324	-21.7%
87	350	335	4.6%	402	-12.9%	307	14.2%	504	-30.5%
88	1,416	1,028	37.8%	1,620	-12.6%	1,226	15.5%	1,714	-17.4%
99	627	742	-15.6%	849	-26.2%	626	0.1%	922	-32.0%

## METROBUS AVERAGE SATURDAY BOARDINGS BY ROUTE

Route	Average Saturday	Average Saturday	Percent Change	Average Saturday	Percent Change	Average Saturday	Percent Change	Average Saturday	Percent Change
<b>Saturdays</b>	Oct-21	Oct-20	YOY	Feb-20	Current vs Feb-20	Sep-21	MOM	Oct-19	YO2Y
101 - A (*)	56	54	3.0%	71	-21.2%	42	33.7%	68	-17.6%
102 - B	550	445	23.7%	851	-35.4%	475	15.9%	785	-30.0%
103 - C	135	161	-16.1%	315	-57.1%	159	-15.2%	245	-45.0%
104	318	83	283.6%	468	-32.2%	269	18.3%	533	-40.4%
105 - E	537	396	35.7%	619	-13.2%	487	10.4%	680	-21.0%
107 - G	826	627	31.8%	1,066	-22.5%	917	-9.9%	1,086	-23.9%
108 - H	240	275	-12.7%	372	-35.6%	239	0.4%	405	-40.8%
110 - J	1,306	1,364	-4.3%	1,952	-33.1%	1,261	3.6%	1,983	-34.1%
112 - L	4,309	4,726	-8.8%	5,667	-24.0%	4,410	-2.3%	6,120	-29.6%
113 - M	252	258	-2.2%	503	-49.9%	259	-2.5%	472	-46.6%
115 (*)	93	138	-32.7%	82	13.4%	92	1.6%	76	22.2%
119 - S	5,037	4,352	15.8%	6,861	-26.6%	4,706	7.0%	7,178	-29.8%
120 - BEACH MAX	3,218	3,130	2.8%	4,744	-32.2%	2,898	11.1%	4,707	-31.6%
135	219	310	-29.3%	539	-59.3%	157	39.4%	510	-57.0%
137 - WEST DADE CONN.	816	674	21.0%	1,027	-20.5%	737	10.7%	1,032	-20.9%
150 - MIAMI BEACH AIRPORT FLYER	825	877	-5.9%	1,604	-48.5%	564	46.4%	1,494	-44.8%
183	1,317	1,272	3.6%	1,790	-26.4%	1,287	2.4%	1,783	-26.1%
200 - CUTLER BAY LOCAL	33	36	-9.8%	119	-72.6%	9	263.0%	122	-73.3%
202 - LITTLE HAITI CONN. (*)	65	90	-27.7%	50	29.9%	55	18.5%	67	-2.7%
207 (7st) - LITTLE HAVANA CIRC	650	626	3.8%	1,032	-37.1%	687	-5.4%	956	-32.1%
208 (8st) - LITTLE HAVANA CIRC	783	808	-3.0%	1,044	-25.0%	787	-0.5%	1,044	-25.0%
210 - SKYLAKE CIRC (*)	129	181	-28.8%	165	-21.9%	103	25.4%	148	-13.1%
246 - NIGHT OWL	58	4	1273.0%	84	-31.7%			86	-32.8%
252 - CORAL REEF MAX	205	218	-6.1%	302	-32.3%	154	33.3%	317	-35.5%
286 - NORTH POINTE CIRC. (*)	34	33	3.1%	41	-17.6%	29	16.9%	39	-13.3%
301 DADE-MONROE EXPRESS(*)	1,103	801	37.7%	801	37.7%	1,009	9.2%	819	34.7%
302 CARD SOUND EXPRESS(*)	49	38	27.9%	57	-14.1%	43	12.4%	54	-10.0%
338 - WEEKEND EXPRESS	145	79	83.5%	237	-38.9%	123	17.8%	224	-35.4%
500		43		70				46	
12/21 WEEKEND INTERL.	1,714	1,419	20.8%	2,528	-32.2%	1,660	3.3%	2,569	-33.3%
FEDERATION GARDENS SHUTTLE (*)	20	17	13.8%	28	-30.3%	20	-1.0%	23	-13.9%
<b>Total</b>	<b>69,520</b>	<b>66,422</b>	<b>4.7%</b>	<b>93,742</b>	<b>-25.8%</b>	<b>66,057</b>	<b>5.2%</b>	<b>96,809</b>	<b>-28.2%</b>

# METROBUS AVERAGE SUNDAY BOARDINGS BY ROUTE

Route	Average Sunday	Average Sunday	Percent Change	Average Sunday	Percent Change	Average Sunday	Percent Change	Average Sunday	Percent Change
<b>Sundays</b>	Oct-21	Oct-20	YOY	Feb-20	Current vs Feb-20	Sep-21	MOM	Oct-19	YO2Y
1 (*)	131	143	-8.2%	201	-34.8%	134	-2.5%	209	-37.3%
2	887	814	9.0%	1,335	-33.5%	670	32.3%	1,111	-20.1%
3	3,181	2,685	18.5%	4,353	-26.9%	3,134	1.5%	4,365	-27.1%
7	963	1,049	-8.2%	1,654	-41.8%	993	-3.0%	1,543	-37.6%
8	1,457	1,529	-4.7%	1,746	-16.5%	1,361	7.1%	1,682	-13.3%
9	2,040	1,995	2.2%	2,549	-20.0%	2,052	-0.6%	2,533	-19.5%
10	1,179	942	25.2%	1,441	-18.2%	1,184	-0.4%	1,422	-17.1%
11	3,254	2,578	26.2%	3,917	-16.9%	2,780	17.0%	3,852	-15.5%
16	616	638	-3.4%	997	-38.2%	683	-9.9%	881	-30.1%
17	1,154	1,274	-9.4%	1,833	-37.0%	1,112	3.8%	1,729	-33.2%
22	1,127	1,050	7.3%	1,548	-27.2%	995	13.4%	1,621	-30.5%
24 - Coral Way Limited	547	683	-19.8%	905	-39.5%	685	-20.1%	940	-41.8%
27	1,921	2,633	-27.0%	2,918	-34.2%	1,974	-2.7%	3,052	-37.1%
31 - BUSWAY LOCAL	484	647	-25.2%	715	-32.3%	380	27.4%	655	-26.1%
32	457	490	-6.8%	772	-40.8%	456	0.2%	786	-41.9%
33	379	424	-10.7%	607	-37.5%	425	-10.9%	654	-42.0%
35	816	871	-6.3%	942	-13.4%	776	5.2%	853	-4.3%
36	828	1,037	-20.1%	1,111	-25.4%	846	-2.1%	1,174	-29.4%
37	1,180	1,202	-1.8%	1,739	-32.1%	1,221	-3.3%	1,783	-33.8%
38	2,705	2,705	0.0%	4,147	-34.8%	2,644	2.3%	4,091	-33.9%
40	320	360	-11.0%	447	-28.5%	348	-8.1%	501	-36.1%
42	269	307	-12.4%	416	-35.4%	278	-3.2%	363	-25.8%
52	360	362	-0.7%	466	-22.8%	387	-6.9%	511	-29.6%
54	860	1,139	-24.5%	1,171	-26.5%	825	4.2%	1,210	-28.9%
55 MARLINS SHUTTLE									
62	552	746	-26.0%	891	-38.0%	584	-5.4%	887	-37.8%
71 (*)	103	142	-27.3%	162	-36.4%	105	-1.5%	140	-26.4%
72 (*)	256	173	48.2%	265	-3.4%	256	-0.3%	237	7.8%
73	424	345	23.1%	495	-14.3%	372	13.9%	508	-16.5%
75	235	256	-8.2%	271	-13.3%	180	30.7%	266	-11.7%
77	2,461	2,327	5.8%	2,815	-12.6%	2,271	8.4%	2,963	-16.9%
87	236	259	-8.8%	319	-26.0%	197	20.0%	307	-23.1%
88	955	784	21.8%	1,286	-25.8%	914	4.4%	1,224	-22.0%
99	516	452	14.1%	658	-21.6%	587	-12.2%	741	-30.4%

## METROBUS AVERAGE SUNDAY BOARDINGS BY ROUTE

Route	Average Sunday	Average Sunday	Percent Change	Average Sunday	Percent Change	Average Sunday	Percent Change	Average Sunday	Percent Change
<b>Sundays</b>	Oct-21	Oct-20	YOY	Feb-20	Current vs Feb-20	Sep-21	MOM	Oct-19	YO2Y
101 - A (*)	39	35	9.5%	56	-30.5%	42	-7.7%	41	-5.9%
102 - B	484	474	2.2%	717	-32.4%	562	-13.8%	719	-32.7%
103 - C	103	115	-10.2%	212	-51.4%	89	15.0%	162	-36.5%
104	194	122	59.3%	317	-38.7%	171	13.4%	343	-43.4%
105 - E	498	488	2.1%	616	-19.2%	447	11.4%	616	-19.2%
107 - G	573	607	-5.6%	895	-36.0%	636	-10.0%	880	-34.9%
108 - H	214	269	-20.4%	328	-34.7%	236	-9.1%	346	-38.0%
110 - J	1,083	1,185	-8.7%	1,638	-33.9%	1,013	6.9%	1,519	-28.7%
112 - L	2,986	3,672	-18.7%	4,804	-37.8%	3,074	-2.9%	4,693	-36.4%
113 - M	280	201	39.7%	431	-35.0%	236	18.7%	374	-25.1%
115 (*)	98	89	11.2%	80	23.0%	92	6.7%	76	29.0%
119 - S	5,119	4,938	3.7%	7,141	-28.3%	4,574	11.9%	6,834	-25.1%
120 - BEACH MAX	2,074	1,999	3.8%	3,469	-40.2%	1,958	5.9%	3,463	-40.1%
135	60	235	-74.6%	349	-82.9%	83	-27.7%	362	-83.5%
137 - WEST DADE CONN.	609	494	23.3%	879	-30.7%	578	5.4%	856	-28.8%
150 - MIAMI BEACH AIRPORT FLYER	692	901	-23.2%	1,574	-56.0%	622	11.4%	1,410	-50.9%
183	1,007	1,124	-10.4%	1,413	-28.7%	1,109	-9.2%	1,380	-27.1%
200 - CUTLER BAY LOCAL	4	34	-89.8%	59	-94.0%	4	-19.2%	51	-93.2%
202 - LITTLE HAITI CONN. (*)	63	81	-22.2%	39	62.1%	52	21.1%	43	48.7%
207 (7st) - LITTLE HAVANA CIRC	389	675	-42.4%	796	-51.2%	404	-3.8%	706	-45.0%
208 (8st) - LITTLE HAVANA CIRC	385	609	-36.8%	911	-57.8%	630	-38.9%	967	-60.2%
210 - SKYLAKE CIRC (*)	102	96	5.8%	143	-29.0%	126	-19.1%	172	-41.0%
246 - NIGHT OWL	30			87	-66.0%	5	492.0%	82	-63.8%
252 - CORAL REEF MAX	150	145	3.8%	199	-24.4%	127	18.3%	248	-39.3%
301 DADE-MONROE EXPRESS(*)	973	740	31.4%	751	29.5%	935	4.0%	739	31.8%
302 CARD SOUND EXPRESS(*)	52	32	63.1%	57	-8.4%	64	-17.9%	57	-8.0%
338 - WEEKEND EXPRESS	135	86	56.3%	252	-46.5%	126	6.8%	172	-21.6%
500		41		83				40	
12/21 WEEKEND INTERL.	1,333	985	35.4%	2,048	-34.9%	1,242	7.3%	2,124	-37.2%
<b>Total</b>	<b>52,688</b>	<b>53,506</b>	<b>-1.5%</b>	<b>75,428</b>	<b>-30.1%</b>	<b>51,045</b>	<b>3.2%</b>	<b>74,263</b>	<b>-29.1%</b>

# METROBUS TOTAL MONTHLY BOARDINGS BY ROUTE

Route	Total Month	Total Month	Percent Change	Total Month	Percent Change	Total Month	Percent Change	Total Month	Percent Change
Monthly Total	Oct-21	Oct-20	YOY	Feb-20	Current vs Feb-20	Sep-21	MOM	Oct-19	YO2Y
1 (*)	5,170	6,270	-17.5%	5,558	-7.0%	5,108	1.2%	8,049	-35.8%
2	56,563	46,950	20.5%	75,463	-25.0%	52,723	7.3%	68,570	-17.5%
3	120,662	101,538	18.8%	146,294	-17.5%	115,206	4.7%	152,608	-20.9%
7	66,495	57,562	15.5%	86,077	-22.7%	62,816	5.9%	89,828	-26.0%
8	94,039	79,110	18.9%	95,295	-1.3%	87,188	7.9%	102,362	-8.1%
9	122,685	114,936	6.7%	135,924	-9.7%	119,400	2.8%	147,848	-17.0%
10	44,878	34,799	29.0%	64,874	-30.8%	42,580	5.4%	64,064	-29.9%
11	182,518	141,633	28.9%	187,425	-2.6%	164,000	11.3%	202,332	-9.8%
12	40,722	45,426	-10.4%	55,585	-26.7%	36,998	10.1%	63,630	-36.0%
16	34,274	31,386	9.2%	49,061	-30.1%	31,101	10.2%	49,970	-31.4%
17	64,711	66,499	-2.7%	96,715	-33.1%	61,412	5.4%	105,317	-38.6%
19	20,284	17,991	12.7%	30,847	-34.2%	19,042	6.5%	36,643	-44.6%
21	25,628	33,859	-24.3%	36,341	-29.5%	24,139	6.2%	42,696	-40.0%
22	63,968	53,579	19.4%	89,404	-28.5%	59,577	7.4%	101,764	-37.1%
24 - Coral Way Limited	21,615	33,067	-34.6%	36,237	-40.4%	23,624	-8.5%	49,909	-56.7%
27	129,664	112,796	15.0%	171,282	-24.3%	124,276	4.3%	186,566	-30.5%
29 (*)	6,151	6,789	-9.4%	10,684	-42.4%	6,069	1.4%	14,533	-57.7%
31 - BUSWAY LOCAL	18,513	21,328	-13.2%	29,125	-36.4%	17,643	4.9%	31,245	-40.7%
32	38,147	40,265	-5.3%	56,027	-31.9%	36,077	5.7%	63,304	-39.7%
33	27,549	20,549	34.1%	40,918	-32.7%	25,843	6.6%	47,463	-42.0%
34 EXPRESS	13,185	16,965	-22.3%	40,159	-67.2%	11,086	18.9%	44,795	-70.6%
35	43,387	44,453	-2.4%	59,041	-26.5%	39,750	9.1%	71,063	-38.9%
36	47,067	49,164	-4.3%	61,606	-23.6%	42,916	9.7%	67,083	-29.8%
37	70,337	60,100	17.0%	82,870	-15.1%	65,482	7.4%	93,383	-24.7%
38	119,073	109,862	8.4%	167,379	-28.9%	110,632	7.6%	187,914	-36.6%
39 EXPRESS	3,643	4,292	-15.1%	17,853	-79.6%	3,276	11.2%	21,910	-83.4%
40	30,156	27,146	11.1%	40,497	-25.5%	28,598	5.4%	44,044	-31.5%
42	16,788	14,935	12.4%	20,825	-19.4%	16,316	2.9%	23,323	-28.0%
46 - LIBERTY CITY CONN. (*)	388	321	20.9%	814	-52.3%	382	1.6%	837	-53.6%
51 - FLAGLER MAX	50,823	40,366	25.9%	62,186	-18.3%	47,897	6.1%	71,878	-29.3%
52	27,658	20,160	37.2%	30,522	-9.4%	25,262	9.5%	33,968	-18.6%
54	54,495	59,100	-7.8%	72,125	-24.4%	50,438	8.0%	81,312	-33.0%
55 MARLINS SHUTTLE									
56 (*)	5,956	3,703	60.8%	7,071	-15.8%	5,790	2.9%	8,344	-28.6%
57	5,504	5,031	9.4%	8,665	-36.5%	4,950	11.2%	10,115	-45.6%
62	32,640	42,714	-23.6%	46,582	-29.9%	32,071	1.8%	53,264	-38.7%
71 (*)	10,884	7,901	37.8%	16,118	-32.5%	10,258	6.1%	17,403	-37.5%
72 (*)	12,758	9,834	29.7%	18,433	-30.8%	11,473	11.2%	19,305	-33.9%

# METROBUS TOTAL MONTHLY BOARDINGS BY ROUTE

Route	Total Month	Total Month	Percent Change	Total Month	Percent Change	Total Month	Percent Change	Total Month	Percent Change
Monthly Total	Oct-21	Oct-20	YOY	Feb-20	Current vs Feb-20	Sep-21	MOM	Oct-19	YO2Y
73	41,346	31,909	29.6%	48,767	-15.2%	36,514	13.2%	55,673	-25.7%
75	22,026	16,834	30.8%	31,994	-31.2%	21,611	1.9%	39,197	-43.8%
77	151,912	127,231	19.4%	174,833	-13.1%	136,839	11.0%	198,022	-23.3%
79 STREET MAX				7,228				8,517	
82 - WESTCHESTER CIRC. (*)	981	615	59.5%	1,482	-33.8%	775	26.6%	1,543	-36.4%
87	25,061	21,960	14.1%	33,273	-24.7%	23,207	8.0%	37,648	-33.4%
88	54,104	41,350	30.8%	54,772	-1.2%	51,123	5.8%	59,093	-8.4%
93 - BISCAYNE MAX	40,633	32,562	24.8%	66,684	-39.1%	37,997	6.9%	76,791	-47.1%
95 EXPRESS	6,922	7,759	-10.8%	33,796	-79.5%	6,446	7.4%	43,125	-83.9%
99	28,429	25,531	11.4%	36,325	-21.7%	28,004	1.5%	40,476	-29.8%
101 - A (*)	3,032	2,555	18.7%	4,114	-26.3%	2,914	4.0%	3,875	-21.8%
102 - B	33,825	15,796	114.1%	42,683	-20.8%	32,436	4.3%	44,119	-23.3%
103 - C	4,984	3,523	41.5%	11,682	-57.3%	4,939	0.9%	11,336	-56.0%
104	16,117	8,754	84.1%	20,351	-20.8%	14,230	13.3%	25,496	-36.8%
105 - E	24,721	17,511	41.2%	31,302	-21.0%	22,133	11.7%	32,893	-24.8%
107 - G	30,806	26,126	17.9%	43,178	-28.7%	30,475	1.1%	46,917	-34.3%
108 - H	8,454	7,623	10.9%	12,624	-33.0%	8,105	4.3%	13,385	-36.8%
110 - J	52,312	52,594	-0.5%	66,481	-21.3%	48,612	7.6%	74,168	-29.5%
112 - L	182,752	171,804	6.4%	200,268	-8.7%	171,945	6.3%	214,529	-14.8%
113 - M	10,515	8,788	19.7%	21,548	-51.2%	10,694	-1.7%	21,345	-50.7%
115 (*)	4,078	5,680	-28.2%	4,334	-5.9%	3,684	10.7%	3,872	5.3%
119 - S	200,290	187,108	7.0%	242,257	-17.3%	186,287	7.5%	250,096	-19.9%
120 - BEACH MAX	113,881	116,927	-2.6%	170,942	-33.4%	100,458	13.4%	176,787	-35.6%
132 TRI-RAIL (DORAL)	113	340	-66.8%	312	-63.8%	127	-11.0%	173	-34.7%
135 (*)	13,494	17,660	-23.6%	32,067	-57.9%	11,946	13.0%	34,140	-60.5%
136	2,198	1,552	41.6%	2,524	-12.9%	2,204	-0.3%	3,316	-33.7%
137 - WESTDADE CONN.	30,118	24,090	25.0%	41,167	-26.8%	26,880	12.0%	44,468	-32.3%
150 - MIAMI BEACH AIRPORT FLYER	25,201	26,987	-6.6%	51,651	-51.2%	20,862	20.8%	49,335	-48.9%
155 - BISCAYNE GARDENS CIRCULATOR (*)	669	731	-8.5%	881	-24.1%	553	21.0%	1,018	-34.3%
175 - NW MIAMI-DADE EXPRESS				661					
183	54,140	57,426	-5.7%	77,570	-30.2%	54,734	-1.1%	82,054	-34.0%
195 EXPRESS - BROWARD BLVD				7,441				9,332	
196 EXPRESS - SHERIDAN ST				7,658				8,877	
200 - CUTLER BAY LOCAL	1,179	1,707	-30.9%	3,984	-70.4%	32	3584.4%	4,383	-73.1%
202 - LITTLE HAITI CONN. (*)	1,626	3,086	-47.3%	3,200	-49.2%	1,995	-18.5%	3,602	-54.9%
204 KILLIAN KAT				21,418				23,996	



# METROBUS TOTAL MONTHLY BOARDINGS BY ROUTE

Route	Total Month	Total Month	Percent Change	Total Month	Percent Change	Total Month	Percent Change	Total Month	Percent Change
Monthly Total	Oct-21	Oct-20	YOY	Feb-20	Current vs Feb-20	Sep-21	MOM	Oct-19	YO2Y
207 (7st) - LITTLE HAVANA CIRC	21,222	28,579	-25.7%	38,127	-44.3%	20,698	2.5%	41,645	-49.0%
208 (8st) - LITTLE HAVANA CIRC	22,060	29,131	-24.3%	35,018	-37.0%	23,167	-4.8%	41,006	-46.2%
210 - SKYLAKE CIRC (*)	6,745	5,930	13.7%	7,033	-4.1%	7,423	-9.1%	7,785	-13.4%
211 - OVERTOWN CIRC. (*)	1,737	775	124.1%	1,159	49.9%	1,274	36.3%	1,569	10.7%
212 - SWEETWATER CIRC. (*)	879	465	89.0%	295	198.0%	624	40.9%	879	0.0%
217 - BUNCHE PARK CIRC (*)	1,449	1,669	-13.2%	1,949	-25.7%	1,086	33.4%	1,952	-25.8%
238 EAST/WEST CONN.	7,008	4,764	47.1%	8,987	-22.0%	5,957	17.6%	11,945	-41.3%
246 - NIGHT OWL	1,100	36	2955.6%	2,641	-58.3%	92	1095.7%	2,816	-60.9%
248 - PRINCETON CIRCULATOR (*)	1,586	1,565	1.3%	2,690	-41.0%	1,300	22.0%	2,382	-33.4%
252 - CORAL REEF MAX	12,253	7,416	65.2%	19,325	-36.6%	10,972	11.7%	22,064	-44.5%
254 - BROWNSVILLE CIRC. (*)	282	243	16.0%	384	-26.6%	690	-59.1%	386	-26.9%
267 - LUDLAM LIMITED (*)	2,303	1,931	19.3%	2,978	-22.7%	2,315	-0.5%	3,028	-23.9%
272 SUNSET KAT (*)	6,725	4,795	40.3%	11,004	-38.9%	6,038	11.4%	12,674	-46.9%
277 - 7th AVENUE MAX	8,078	10,792	-25.1%	13,669	-40.9%	7,414	9.0%	14,421	-44.0%
286 - NORTH POINTE CIRC. (*)	925	926	-0.1%	2,145	-56.9%	871	6.2%	2,134	-56.7%
287 - SAGA BAY MAX	3,703	2,673	38.5%	7,160	-48.3%	3,441	7.6%	7,384	-49.9%
288 - KENDALL CRUISER				15,249				18,021	
295 EXPRESS - BROWARD BLVD - CIVIC CENTER				4,668				5,417	
296 EXPRESS - SHERIDAN ST - CIVIC CENTER				4,297				4,876	
297-27th AVENUE ORANGE MAX	13,927	16,691	-16.6%	27,125	-48.7%	14,161	-1.7%	30,746	-54.7%
301 DADE-MONROE EXPRESS(*)	31,331	23,977	30.7%	23,838	31.4%	29,516	6.1%	24,789	26.4%
302 CARD SOUND EXPRESS(*)	1,998	1,474	35.5%	2,236	-10.6%	1,959	2.0%	2,048	-2.4%
338 - WEEKEND EXPRESS	1,397	739	89.0%	2,191	-36.2%	1,122	24.5%	1,583	-11.7%
344 (*)	1,273	1,456	-12.6%	1,919	-33.7%	1,004	26.8%	2,874	-55.7%
500		1,155		2,301				1,120	
836 EXPRESS	2,568					2,508	2.4%		
12/21 WEEKEND INTERL.	15,235	11,031	38.1%	20,830	-26.9%	12,848	18.6%	18,771	-18.8%
GREEN HILLS SHUTTLE (*)	21	37	-43.2%	36	-41.7%	18	16.7%	26	-19.2%
KINGS CREEK SHUTTLE (*)	29	48	-39.6%	52	-44.2%	73	-60.3%	105	-72.4%
SIERRALAKES SHUTTLE (*)	171	84	103.6%	180	-5.0%	73	134.2%	100	71.0%
ROBERT SHARP SHUTTLE (*)	84	80	5.0%	38	121.1%	120	-30.0%	24	250.0%
AHEPA SHUTTLE (*)	72	92	-21.7%	83	-13.3%	106	-32.1%	111	-35.1%
FEDERATION GARDENSSHUTTLE (*)	99	87	13.8%	142	-30.3%	80	23.8%	92	7.6%
<b>Total</b>	<b>3,081,157</b>	<b>2,805,139</b>	<b>9.8%</b>	<b>4,123,083</b>	<b>-25.3%</b>	<b>2,877,110</b>	<b>7.1%</b>	<b>4,507,012</b>	<b>-31.6%</b>

# METROBUS HOLIDAY BOARDINGS BY ROUTE

## Columbus Day Holiday

ROUTES	Columbus Day 2020	Columbus Day 2021	Pct Delta	ROUTES	Columbus Day 2020	Columbus Day 2021	Pct Delta	ROUTES	Columbus Day 2020	Columbus Day 2021	Pct Delta
1	222	240		57	211	241		202	120	3	-97.5%
2	1,747	2,110		62	888	1,090		207	653	675	3.4%
3	2,612	4,173		71	262	471		208	486	715	47.1%
7	2,078	2,343		72	320	432		210	274	282	2.9%
8	2,248	3,628		73	1,114	1,493		211	25	60	140.0%
9	3,867	4,802		75	788	883		212	10	40	300.0%
10	910	1,437		77	4,277	6,121		217	18	69	283.3%
11	4,191	6,852		82	22	36		238	283	391	38.2%
12	2,021	1,881		87	662	995		248	68	64	-5.9%
16	922	1,067		88	1,523	1,871		252	273	459	68.1%
17	2,432	2,450		93	1,223	1,735		254	10	120	1100.0%
19	616	897		95	223	133		267	85	87	2.4%
21	912	1,078		99	770	1,145		272	208	315	51.4%
22	1,561	2,033		101	93	125		277	480	286	-40.4%
24	900	689		102	617	1,342		286	30	29	-3.3%
27	2,987	5,006		103	153	60		287	74	175	136.5%
29	321	258		104	320	656		297	751	585	-22.1%
31	564	608		105	714	822		301	762	943	23.8%
32	1,498	1,528		107	691	1,236		302	52	92	76.9%
33	761	1,019		108	215	324		344	84	61	-27.4%
34	789	619		110	1,845	2,201		500	15		
35	1,488	1,409		112	5,169	6,221		836		80	
36	1,506	1,752		113	221	339					
37	2,082	2,473		115	254	153					
38	3,250	3,869		119	5,746	6,707					
39	132	93		120	2,837	4,082					
40	979	1,167		132	7	2					
42	594	592		135	795	619					
46	12	23		136	57	93					
51	1,515	2,366		137	781	1,026					
52	608	959		150	831	763					
54	1,365	2,045		155	41	29					
56	133	275		183	2,162	1,685		Total	88,416	112,403	27.1%

# YEAR-OVER-YEAR BUS RIDERSHIP BY ROUTE SERVICE TYPE

Boardings by Service Type and Route	Average Weekday	Average Weekday	Percent Change	Average Saturday	Average Saturday	Percent Change	Average Sunday	Average Sunday	Percent Change	Total Monthly	Total Monthly	Percent Change
	Oct-21	Oct-20	21 vs 20	Oct-21	Oct-20	21 vs 20	Oct-21	Oct-20	21 vs 20	Oct-21	Oct-20	21 vs 20
<b>Express Routes (1)</b>												
34 EXPRESS	628	771	-18.6%							13,185	16,965	-22.3%
39 EXPRESS	173	195	-11.1%							3,643	4,292	-15.1%
95-EXPRESS	330	353	-6.5%							6,922	7,759	-10.8%
150-MIAMI BEACH AIRPORT FLYER	839	864	-2.9%	825	877	-5.9%	692	901	-23.2%	25,201	26,987	-6.6%
175 - NW MIAMI-DADE EXPRESS												
195 EXPRESS - BROWARD BLVD												
196 EXPRESS - SHERIDAN ST												
295 EXPRESS - BROWARD BLVD - CIMC CENTER												
296 EXPRESS - SHERIDAN ST - CIVIC CENTER												
204 KAT-KILLIAN												
288 KENDALL CRUISER												
338 - WEEKEND EXPRESS				145	79	83.5%	135	86	56.3%	1,397	739	89.0%
836 EXPRESS	122									2,568		
<b>Subtotal Express Routes</b>	<b>2,092</b>	<b>2,183</b>	<b>-4.2%</b>	<b>970</b>	<b>955</b>	<b>1.5%</b>	<b>827</b>	<b>987</b>	<b>-16.2%</b>	<b>52,916</b>	<b>56,742</b>	<b>-6.7%</b>
<b>Percentage of All Bus Routes</b>	<b>1.8%</b>	<b>2.1%</b>		<b>1.4%</b>	<b>1.4%</b>		<b>1.6%</b>	<b>1.8%</b>		<b>1.7%</b>	<b>2.0%</b>	
<b>Contracted Regular &amp; Circulator Routes</b>												
1	179	217	-17.3%	150	185	-19.2%	131	143	-8.2%	5,170	6,270	-17.5%
29	293	309	-5.1%							6,151	6,789	-9.4%
46 - LIBERTY CITY CONN.	18	15	26.6%							388	321	20.9%
56	284	168	68.5%							5,956	3,703	60.8%
71	459	303	51.7%	145	135	7.6%	103	142	-27.3%	10,884	7,901	37.8%
72	469	363	29.1%	326	230	41.4%	256	173	48.2%	12,758	9,834	29.7%
82 - WESTCHESTER CIRC	37	22	64.2%	43	25	70.4%				981	615	59.5%
101 - A	122	97	25.1%	56	54	3.0%	39	35	9.5%	3,032	2,555	18.7%
115	149	211	-29.5%	93	138	-32.7%	98	89	11.2%	4,078	5,680	-28.2%
155 - BISCAYNE GARDENS CIRC	32	33	-4.1%							669	731	-8.5%
202 - LITTLE HAITI CONN.	47	105	-55.4%	65	90	-27.7%	63	81	-22.2%	1,626	3,086	-47.3%
210 - SKYLAKE CIRC	266	211	26.2%	129	181	-28.8%	102	96	5.8%	6,745	5,930	13.7%
211-OVERTOWN CIRC	83	35	134.8%							1,737	775	124.1%
212-SWEETWATER CIRC	42	21	98.0%							879	465	89.0%
217 - BUNCHE PARK CIRC	69	76	-9.0%							1,449	1,669	-13.2%
248 - PRINCETON CIRCULATOR	76	71	6.2%							1,586	1,565	1.3%
254-BROWNSVILLE CIRC	13	11	21.6%							282	243	16.0%
267-LUDLAM LIMITED	110	88	24.9%							2,303	1,931	19.3%
272 KAT-SUNSET	320	218	46.9%							6,725	4,795	40.3%
286-NORTH POINTE CIRC	36	35	3.9%	34	33	3.1%				925	926	-0.1%
344	61	66	-8.4%							1,273	1,456	-12.6%
<b>Subtotal Contracted Reg. &amp; Circ. Routes</b>	<b>3,164</b>	<b>2,675</b>	<b>18.3%</b>	<b>1,039</b>	<b>1,071</b>	<b>-3.0%</b>	<b>791</b>	<b>758</b>	<b>4.4%</b>	<b>75,597</b>	<b>67,240</b>	<b>12.4%</b>
<b>Percentage of All Bus Routes</b>	<b>2.7%</b>	<b>2.6%</b>		<b>1.5%</b>	<b>1.6%</b>		<b>1.5%</b>	<b>1.4%</b>		<b>2.5%</b>	<b>2.4%</b>	

(1) Several express routes were suspended beginning at the end of March 2020, due to the SARS-CoV-2 pandemic, while other routes had alignment and schedule modifications made to them, in an ongoing effort to optimize service delivery..

# YEAR-OVER-YEAR BUS RIDERSHIP BY ROUTE SERVICE TYPE

Boardings by Service Type and Route	Average Weekday	Average Weekday	Percent Change	Average Saturday	Average Saturday	Percent Change	Average Sunday	Average Sunday	Percent Change	Total Monthly	Total Monthly	Percent Change
	Oct-21	Oct-20	21 vs 20	Oct-21	Oct-20	21 vs 20	Oct-21	Oct-20	21 vs 20	Oct-21	Oct-20	21 vs 20
<b>Contracted Express Routes</b>												
301-DADE MONROE EXPRESS	998	773	29.0%	1,103	801	37.7%	973	740	31.4%	31,331	23,977	30.7%
302-CARD SOUND EXPRESS	71	53	35.4%	49	38	27.9%	52	32	63.1%	1,998	1,474	35.5%
<b>Subtotal Contracted Express Routes</b>	<b>1,069</b>	<b>826</b>	<b>29.4%</b>	<b>1,151</b>	<b>839</b>	<b>37.2%</b>	<b>1,025</b>	<b>772</b>	<b>32.8%</b>	<b>33,329</b>	<b>25,451</b>	<b>31.0%</b>
<b>Percentage of All Bus Routes</b>	<b>0.9%</b>	<b>0.8%</b>		<b>1.7%</b>	<b>1.3%</b>		<b>1.9%</b>	<b>1.4%</b>		<b>1.1%</b>	<b>0.9%</b>	
<b>Limited Stop Routes</b>												
51-FLAGLER MAX	2,420	1,835	31.9%							50,823	40,366	25.9%
79 STREET MAX												
93 - BISCAYNE MAX	1,935	1,480	30.7%							40,633	32,562	24.8%
120 - BEACH MAX	4,163	4,240	-1.8%	3,218	3,130	2.8%	2,074	1,999	3.8%	113,881	116,927	-2.6%
252-CORAL REEF MAX	499	261	91.0%	205	218	-6.1%	150	145	3.8%	12,253	7,416	65.2%
277-7TH AVENUE MAX	385	491	-21.6%							8,078	10,792	-25.1%
287-SAGA BAY MAX	176	122	45.1%							3,703	2,673	38.5%
297-27th AVENUE ORANGE MAX	653	759	-13.9%				108			13,927	16,691	-16.6%
<b>Subtotal Limited Stop (MAX) Routes</b>	<b>10,231</b>	<b>9,187</b>	<b>11.4%</b>	<b>3,423</b>	<b>3,348</b>	<b>2.2%</b>	<b>2,332</b>	<b>2,144</b>	<b>8.8%</b>	<b>243,298</b>	<b>227,427</b>	<b>7.0%</b>
<b>Percentage of All Bus Routes</b>	<b>8.7%</b>	<b>8.9%</b>		<b>4.9%</b>	<b>5.0%</b>		<b>4.4%</b>	<b>4.0%</b>		<b>7.9%</b>	<b>8.1%</b>	
<b>Free Route</b>												
132 - TRI-RAIL DORAL	13	15	-18.8%							113	340	-66.8%
<b>Percentage of All Bus Routes</b>	<b>0.0%</b>	<b>0.0%</b>								<b>0.0%</b>	<b>0.0%</b>	
<b>Shuttles</b>												
55-MARLINS SHUTTLE												
<b>Percentage of All Bus Routes</b>												
<b>Contractor-Operated Lifeline Routes</b>												
GREEN HILLS SHUTTLE	5	9	-43.2%							21	37	-43.2%
KINGS CREEK SHUTTLE	7	10	-24.5%							29	48	-39.6%
SIERRA LAKES SHUTTLE	34	17	103.6%							171	84	103.6%
ROBERT SHARP SHUTTLE	21	20	5.0%							84	80	5.0%
AHEPA SHUTTLE	18	18	-2.2%							72	92	-21.7%
FEDERATION GARDENS SHUTTLE				20	17	13.8%				99	87	13.8%
<b>Subtotal Contractor-Operated Lifeline Routes</b>	<b>86</b>	<b>74</b>	<b>15.7%</b>	<b>20</b>	<b>17</b>	<b>13.8%</b>				<b>476</b>	<b>428</b>	<b>11.2%</b>
<b>Percentage of All Bus Routes</b>	<b>0.1%</b>	<b>0.1%</b>		<b>0.0%</b>	<b>0.0%</b>					<b>0.0%</b>	<b>0.0%</b>	
<b>Other Circulator Route</b>												
200-CUTLER BAY LOCAL (++)	98	63	54.6%	33	36	-9.8%	4	34	-89.8%	1,179	1,707	-30.9%
<b>Percentage of All Bus Routes</b>	<b>0.1%</b>	<b>0.1%</b>		<b>0.0%</b>	<b>0.1%</b>		<b>0.0%</b>	<b>0.1%</b>		<b>0.0%</b>	<b>0.1%</b>	
<b>All Other (Regular) Routes</b>	<b>101,044</b>	<b>87,717</b>	<b>15.2%</b>	<b>62,885</b>	<b>60,155</b>	<b>4.5%</b>	<b>47,709</b>	<b>48,811</b>	<b>-2.3%</b>	<b>2,674,249</b>	<b>2,425,804</b>	<b>10.2%</b>
<b>Percentage of All Bus Routes</b>	<b>85.8%</b>	<b>85.4%</b>		<b>90.5%</b>	<b>90.6%</b>		<b>90.5%</b>	<b>91.2%</b>		<b>86.8%</b>	<b>86.5%</b>	
<b>Total Bus System (1)</b>	<b>117,796</b>	<b>102,741</b>	<b>14.7%</b>	<b>69,520</b>	<b>66,422</b>	<b>4.7%</b>	<b>52,688</b>	<b>53,506</b>	<b>-1.5%</b>	<b>3,081,157</b>	<b>2,805,139</b>	<b>9.8%</b>

(++) Due to various communications system and process issues, the NextFare System did not capture a portion of the Cutler Bay Local ridership in October 2021.

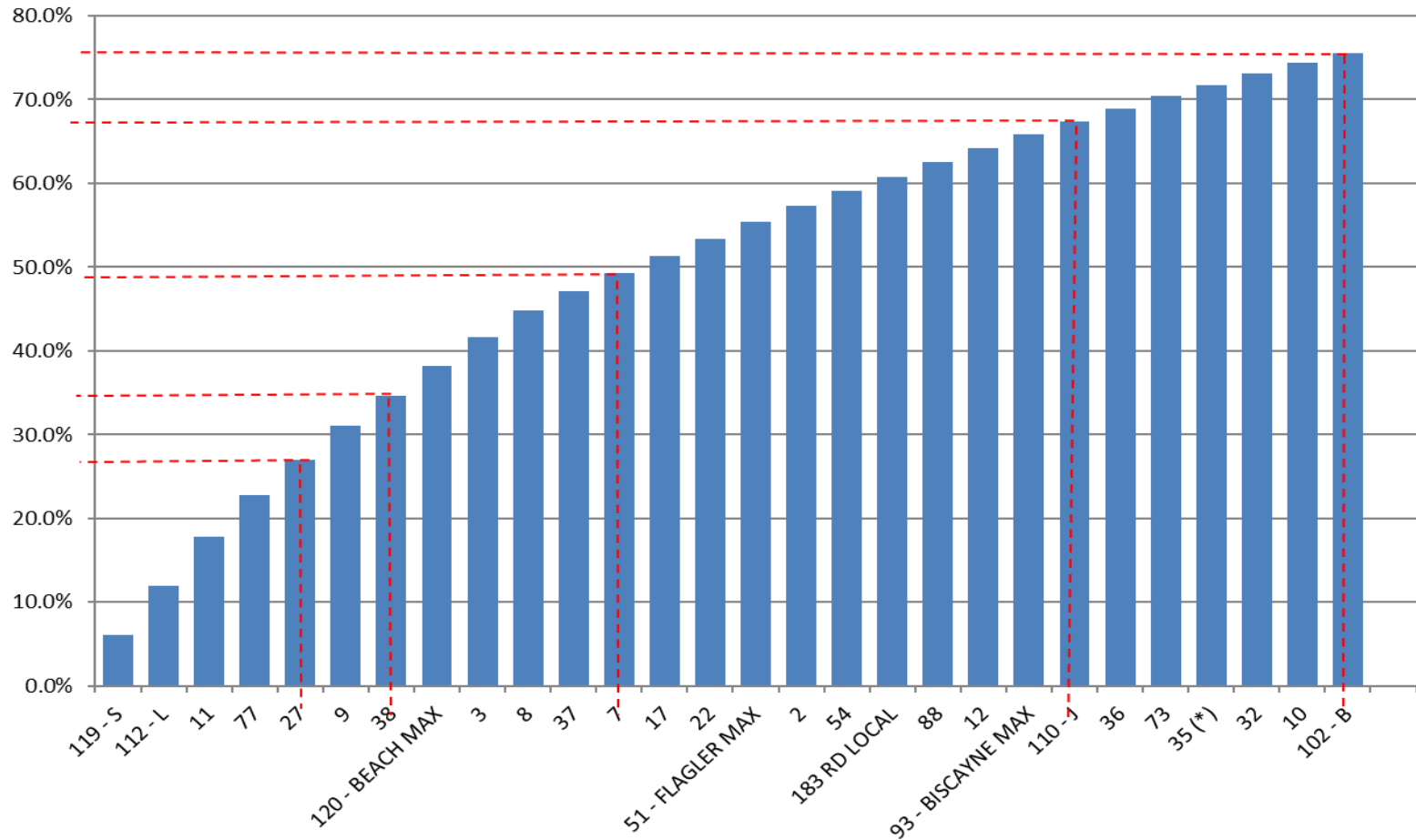
## Bus Routes as Ranked by Percentage of Average Weekday Ridership

Rank	Route	Average Weekday	Percent Share	Cumul Pct Share	Rank	Route	Average Weekday	Percent Share	Cumul Pct Share	Rank	Route	Average Weekday	Percent Share	Cumul Pct Share
1	119	7,120	6.0%	6.0%	36	99	1,082	0.9%	83.4%	71	836	122	0.1%	99.0%
2	112	6,965	5.9%	12.0%	37	33	1,063	0.9%	84.3%	72	101	122	0.1%	99.1%
3	11	6,841	5.8%	17.8%	38	87	1,054	0.9%	85.2%	73	267	110	0.1%	99.2%
4	77	5,842	5.0%	22.7%	39	301	998	0.8%	86.0%	74	136	105	0.1%	99.3%
5	27	5,030	4.3%	27.0%	40	19	966	0.8%	86.8%	75	200	98	0.1%	99.4%
6	9	4,780	4.1%	31.1%	41	105	931	0.8%	87.6%	76	211	83	0.1%	99.4%
7	38	4,243	3.6%	34.7%	42	75	917	0.8%	88.4%	77	248	76	0.1%	99.5%
8	120	4,163	3.5%	38.2%	43	150	839	0.7%	89.1%	78	302	71	0.1%	99.6%
9	3	4,109	3.5%	41.7%	44	24	790	0.7%	89.8%	79	217	69	0.1%	99.6%
10	8	3,700	3.1%	44.8%	45	208	772	0.7%	90.5%	80	344	61	0.1%	99.7%
11	37	2,720	2.3%	47.1%	46	207	763	0.6%	91.1%	81	246	52	0.0%	99.7%
12	7	2,536	2.2%	49.3%	47	297	653	0.6%	91.7%	82	202	47	0.0%	99.8%
13	17	2,432	2.1%	51.3%	48	104	646	0.5%	92.2%	83	212	42	0.0%	99.8%
14	22	2,430	2.1%	53.4%	49	42	638	0.5%	92.7%	84	82	37	0.0%	99.8%
15	51	2,420	2.1%	55.5%	50	34	628	0.5%	93.3%	85	286	36	0.0%	99.9%
16	2	2,172	1.8%	57.3%	51	31	614	0.5%	93.8%	86	SL	34	0.0%	99.9%
17	54	2,077	1.8%	59.1%	52	135	587	0.5%	94.3%	87	155	32	0.0%	99.9%
18	183	2,025	1.7%	60.8%	53	252	499	0.4%	94.7%	88	RS	21	0.0%	99.9%
19	88	2,012	1.7%	62.5%	54	72	469	0.4%	95.1%	89	46	18	0.0%	100.0%
20	12	1,939	1.6%	64.1%	55	71	459	0.4%	95.5%	90	AS	18	0.0%	100.0%
21	93	1,935	1.6%	65.8%	56	277	385	0.3%	95.8%	91	254	13	0.0%	100.0%
22	110	1,922	1.6%	67.4%	57	113	374	0.3%	96.2%	92	132	13	0.0%	100.0%
23	36	1,820	1.5%	69.0%	58	238	334	0.3%	96.4%	93	KC	7	0.0%	100.0%
24	73	1,685	1.4%	70.4%	59	95	330	0.3%	96.7%	94	GH	5	0.0%	100.0%
25	35	1,623	1.4%	71.8%	60	272	320	0.3%	97.0%					
26	32	1,547	1.3%	73.1%	61	108	294	0.2%	97.2%					
27	10	1,481	1.3%	74.3%	62	29	293	0.2%	97.5%					
28	102	1,365	1.2%	75.5%	63	56	284	0.2%	97.7%					
29	40	1,249	1.1%	76.6%	64	210	266	0.2%	98.0%					
30	62	1,225	1.0%	77.6%	65	57	262	0.2%	98.2%					
31	21	1,220	1.0%	78.6%	66	103	181	0.2%	98.3%					
32	16	1,185	1.0%	79.6%	67	1	179	0.2%	98.5%					
33	107	1,134	1.0%	80.6%	68	287	176	0.1%	98.6%					
34	52	1,098	0.9%	81.5%	69	39	173	0.1%	98.8%					
35	137	1,095	0.9%	82.5%	70	115	149	0.1%	98.9%					
										entirely contracted				
										contracted supplementals				
										Total Boardings	117,796	100.0%	0.0%	

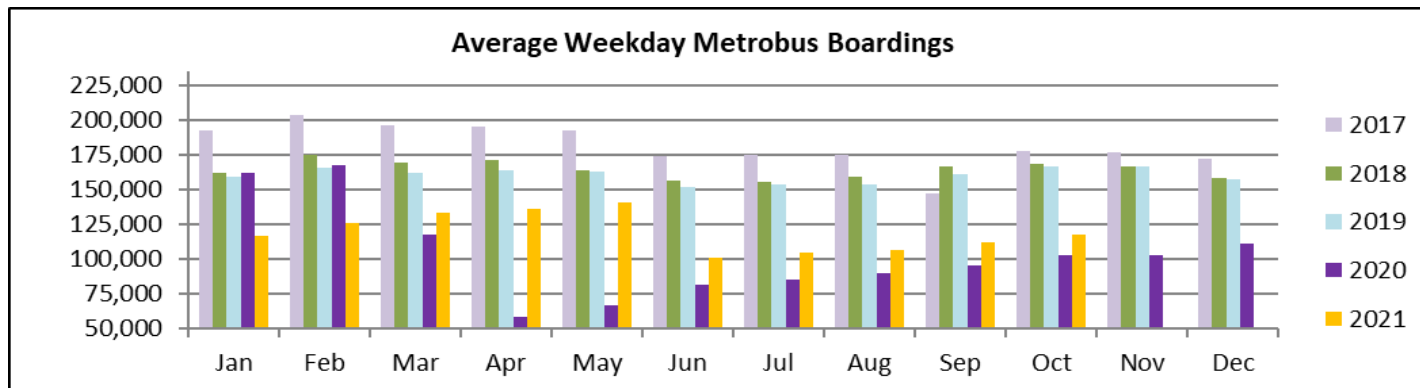
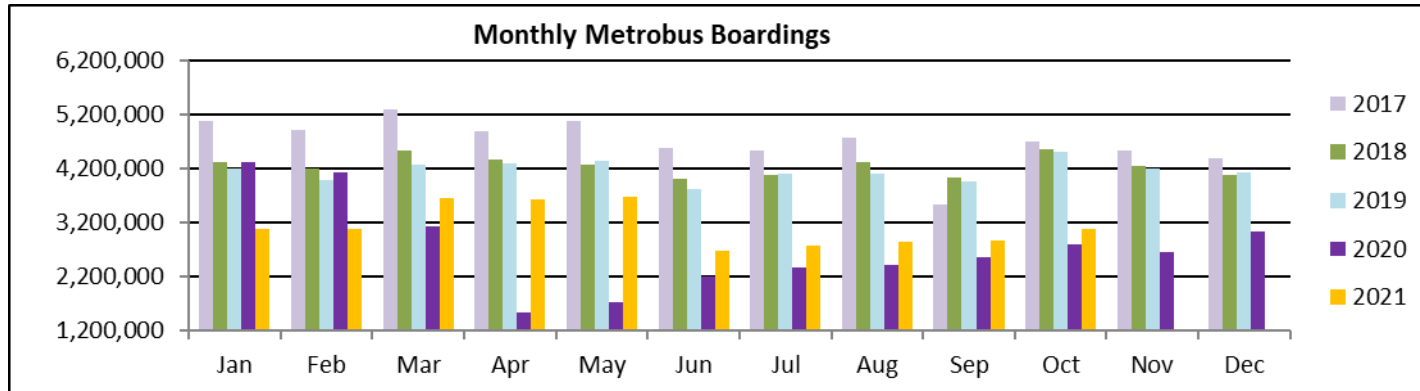
(1) Average weekday ridership rounded to the nearest unit; the routes shaded in blue are directly operated, with supplemental runs provided by contractors.

(2) Includes the five Lifeline Shuttles that operate on weekdays: Ahepa, Green Hills, Kings Creek, Robert Sharp and Sierra Lakes.

**Bus - Cumulative Percentage Average Weekday Ridership Share  
Top 1/4, 1/3, 1/2, 2/3 and 3/4 of Routes**



# **TOTAL MONTHLY AND AVERAGE WEEKDAY RIDERSHIP YEAR OVER YEAR COMPARISON CHARTS – METROBUS**



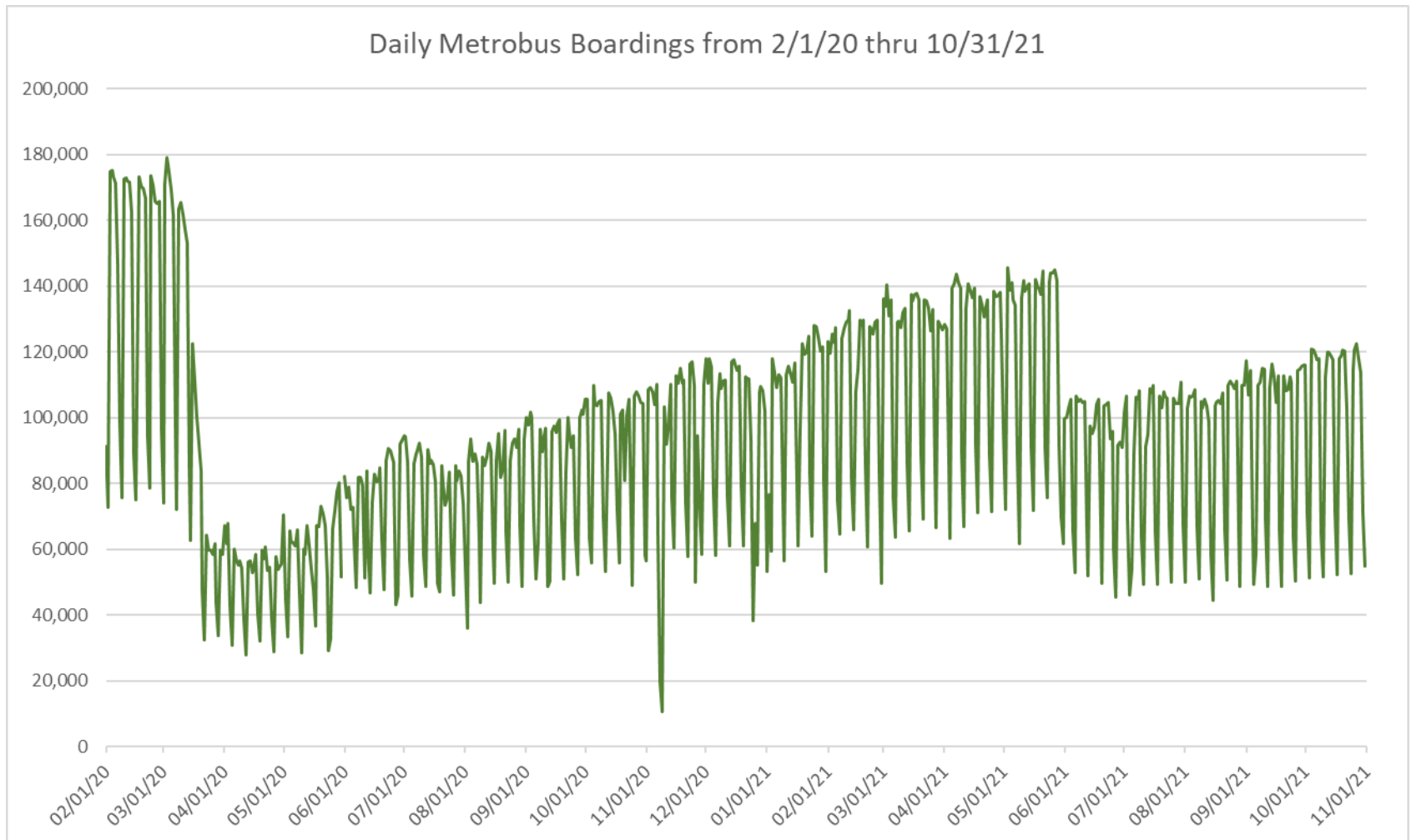
# **“TOP 5 / BOTTOM 5” BUS ROUTES AVERAGE WEEKDAY RIDERSHIP PERFORMANCE YEAR OVER YEAR COMPARISONS**

Route	Oct-21	Oct-20	Absolute Delta (1)	Percent Delta (2)
<b>11</b>	6,841	5,124	1,717	33.5%
<b>77</b>	5,842	4,722	1,119	23.7%
<b>27</b>	5,030	3,913	1,118	28.6%
<b>112 - L</b>	6,965	6,068	898	14.8%
<b>102 - B</b>	1,365	531	834	157.1%
<b>24</b>	790	1,221	-431	-35.3%
<b>21</b>	1,220	1,539	-319	-20.7%
<b>62</b>	1,225	1,522	-297	-19.5%
<b>207 (7st) - LITTLE HAVANA CIRC</b>	763	1,034	-271	-26.2%
<b>208 (8st) - LITTLE HAVANA CIRC</b>	772	1,030	-257	-25.0%

- (1) Averages rounded to the nearest boarding, data as reported by APC system or/and contractor, depending on route; Lifelines excluded.
- (2) As a result of the SARS-CoV-2 pandemic, rides were fare-free beginning March 22, 2020; many bus routes continued reporting YOY gains in October 2021, since October 2020 showed clear reduction effects on ridership from the SARS-CoV-2 pandemic. Fares were reinstated June 1, 2021, and ridership data from the farebox system rather than the automatic passenger counter system is utilized from that date going forward.



## DAILY METROBUS RIDERSHIP SINCE FEBRUARY 1, 2020



- (1) National Emergency was declared on 3/13/20 as a result of the SARS-CoV-2 pandemic.
- (2) There was no Metrobus, Metrorail and Metromover service on 5/31/20, as a safety precaution.
- (3) The dip at the start of the second week of November 2020 is due to Hurricane Eta.
- (4) The reduction seen beginning 6/1/21 is partly due to the resumption of fares and partly the result of resuming reporting Cubic farebox data rather than bus APC counts.
- (5) Periodic (weekly) variations are prominent, since weekday ridership is almost always significantly higher than weekend or holiday ridership.

# METROBUS PARKING PATRONAGE SUMMARY

## October 2021

PARK-RIDE LOT	ACTUAL AVAILABLE SPACES	ACTUAL OCCUPANCY	PERCENT OCCUPANCY
Transitway / SW 152nd St	200	66	33%
Transitway / SW 168th St	149	68	46%
Transitway / SW 200th Street (effective February 2020)	100	29	29%
Transitway / SW 112 Ave (Target)	450	113	25%
Transitway / SW 244th St	95	32	34%
Transitway / SW 296th St	139	56	40%
Transitway / SW 344th St	248	135	54%
Coral Reef Drive 117/ Turnpike	95	56	59%
Golden Glades - East Lot	535	194	36%
Golden Glades - West Lot	1,007	0	0%
Hammocks Town Center (SW 152 Ave / SW 104 St)	50	0	0%
Kendall Dr./SW 127th Ave	161	7	4%
West Kendall Transit Term (Kendall Dr / SW162 Ave)	40	9	23%
NW 7th Avenue Transit Village (NW 7 Ave / NW 62 St)	25	20	80%
Miami Gardens Dr. / NW 73rd Ave	136	0	0%
Dolphin Station (effective Mar 2020)	348	47	14%
I-75 / Miami Gardens Dr (effective June 2019)	298	0	0%
<b>TOTAL</b>	<b>4,076</b>	<b>832</b>	<b>20%</b>

*Note: some park-ride lots are joint-use and the number of park-ride vehicles may exceed the number of spaces allocated.*

# Metrorail



## METRORAIL AVERAGE WEEKDAY BOARDINGS BY STATION (†)

<b>Weekdays</b>	<b>Average Weekday</b>	<b>Average Weekday</b>	<b>Percent Change</b>	<b>Average Weekday</b>	<b>Percent Change</b>	<b>Average Weekday</b>	<b>Percent Change</b>	<b>Average Weekday</b>	<b>Percent Change</b>
<b>STATIONS</b>	<b>Oct-21</b>	<b>Oct-20</b>	<b>YOY</b>	<b>Feb-20</b>	<b>Current vs Feb-20</b>	<b>Sep-21</b>	<b>MOM</b>	<b>Oct-19</b>	<b>YO2Y</b>
ALLAPATTAH	1,074	1,187	-9.6%	1,942	-44.7%	1,006	6.7%	1,819	-41.0%
BRICKELL	3,351	3,368	-0.5%	6,529	-48.7%	3,268	2.5%	6,144	-45.5%
BROWNSVILLE	579	687	-15.7%	862	-32.8%	570	1.7%	838	-30.9%
CIVIC CENTER	2,999	2,321	29.2%	6,143	-51.2%	2,880	4.1%	5,980	-49.9%
COCONUT GROVE	1,050	856	22.6%	1,795	-41.5%	1,004	4.6%	1,651	-36.4%
CULMER	805	852	-5.5%	1,392	-42.1%	760	6.0%	1,284	-37.3%
DADELAND NORTH	2,775	2,784	-0.3%	5,926	-53.2%	2,627	5.6%	5,770	-51.9%
DADELAND SOUTH	3,249	2,468	31.7%	7,150	-54.6%	3,118	4.2%	7,067	-54.0%
DOUGLAS ROAD	2,185	1,718	27.2%	3,624	-39.7%	2,067	5.7%	3,452	-36.7%
DR. MARTIN LUTHER KING, JR.	675	745	-9.5%	1,157	-41.7%	643	5.0%	1,157	-41.7%
EARLINGTON HEIGHTS	943	938	0.6%	1,662	-43.2%	889	6.1%	1,578	-40.2%
GOVERNMENT CENTER	4,636	3,171	46.2%	10,557	-56.1%	4,382	5.8%	9,979	-53.5%
HIALEAH	801	782	2.5%	1,253	-36.1%	756	6.0%	1,265	-36.7%
MIAMI INTERNATIONAL AIRPORT	722	556	29.8%	1,711	-57.8%	665	8.6%	1,578	-54.3%
NORTHSIDE	937	889	5.4%	1,476	-36.5%	862	8.6%	1,405	-33.3%
OKEECHOBEE	631	630	0.2%	1,164	-45.8%	616	2.5%	1,178	-46.4%
OVERTOWN / ARENA	888	695	27.8%	2,274	-61.0%	824	7.7%	2,167	-59.0%
PALMETTO	876	739	18.6%	1,543	-43.2%	833	5.2%	1,449	-39.5%
SANTA CLARA	442	497	-11.0%	812	-45.5%	415	6.7%	750	-41.0%
SOUTH MIAMI	1,519	1,104	37.6%	3,015	-49.6%	1,449	4.8%	2,900	-47.6%
TRI-RAIL	754	666	13.3%	1,207	-37.5%	723	4.3%	1,112	-32.1%
UNIVERSITY	1,329	561	136.8%	2,784	-52.3%	1,393	-4.6%	2,663	-50.1%
VIZCAYA	816	647	26.1%	1,390	-41.3%	753	8.4%	1,303	-37.4%
<b>TOTAL</b>	<b>34,035</b>	<b>28,858</b>	<b>17.9%</b>	<b>67,367</b>	<b>-49.5%</b>	<b>32,502</b>	<b>4.7%</b>	<b>64,488</b>	<b>-47.2%</b>

(†) In this table and those which follow, "YOY" stands for "year-over-year", "MOM" for "month-over-month" and "YO2Y" for "year over two years", i.e., current month vs 12 months prior, one month prior and 24 months prior, respectively.

(\*) Due to effects from the SARS-CoV-2 pandemic, rides were fare-free beginning March 22, 2020; fares were reinstated on June 1, 2021, in part accounting for the drop in ridership from May 2021.

## METRORAIL AVERAGE SATURDAY BOARDINGS BY STATION

<b>Saturdays</b>	<b>Average Saturday</b>	<b>Average Saturday</b>	<b>Percent Change</b>	<b>Average Saturday</b>	<b>Percent Change</b>	<b>Average Saturday</b>	<b>Percent Change</b>	<b>Average Saturday</b>	<b>Percent Change</b>
<b>STATIONS</b>	<b>Oct-21</b>	<b>Oct-20</b>	<b>YOY</b>	<b>Feb-20</b>	<b>Current vs Feb-20</b>	<b>Sep-21</b>	<b>MOM</b>	<b>Oct-19</b>	<b>YO2Y</b>
ALLAPATTAH	634	758	-16.4%	1,051	-39.7%	577	9.9%	961	-34.0%
BRICKELL	1,741	2,048	-15.0%	2,811	-38.1%	1,596	9.1%	2,511	-30.7%
BROWNSVILLE	350	540	-35.3%	520	-32.7%	367	-4.7%	507	-31.1%
CIVIC CENTER	511	577	-11.5%	959	-46.7%	466	9.7%	936	-45.4%
COCONUT GROVE	579	510	13.5%	928	-37.6%	526	10.1%	790	-26.7%
CULMER	387	539	-28.1%	721	-46.3%	342	13.2%	641	-39.6%
DADELAND NORTH	1,106	1,475	-25.0%	1,994	-44.5%	1,003	10.3%	1,830	-39.6%
DADELAND SOUTH	1,434	1,557	-7.9%	2,625	-45.4%	1,366	5.0%	2,514	-43.0%
DOUGLAS ROAD	929	1,036	-10.3%	1,319	-29.6%	817	13.8%	1,261	-26.3%
DR. MARTIN LUTHER KING, JR.	349	524	-33.5%	625	-44.2%	326	6.9%	620	-43.7%
EARLINGTON HEIGHTS	545	633	-13.8%	935	-41.7%	507	7.4%	873	-37.6%
GOVERNMENT CENTER	1,979	1,864	6.2%	4,262	-53.6%	1,844	7.3%	3,650	-45.8%
HIALEAH	384	441	-12.8%	583	-34.0%	380	1.3%	583	-34.0%
MIAMI INTERNATIONAL AIRPORT	587	514	14.1%	1,330	-55.9%	520	12.8%	1,162	-49.5%
NORTHSIDE	603	720	-16.4%	878	-31.4%	528	14.1%	857	-29.6%
OKEECHOBEE	283	295	-4.2%	408	-30.8%	262	7.8%	378	-25.1%
OVERTOWN / ARENA	330	425	-22.3%	678	-51.3%	300	10.0%	546	-39.4%
PALMETTO	307	316	-2.7%	458	-32.9%	243	26.5%	378	-18.7%
SANTA CLARA	237	331	-28.4%	422	-43.9%	215	9.9%	373	-36.5%
SOUTH MIAMI	729	676	7.8%	1,256	-41.9%	647	12.8%	1,130	-35.4%
TRI-RAIL	353	390	-9.5%	614	-42.6%	336	5.0%	478	-26.3%
UNIVERSITY	456	285	59.8%	714	-36.2%	440	3.6%	648	-29.6%
VIZCAYA	354	357	-1.0%	622	-43.1%	329	7.4%	553	-36.0%
<b>TOTAL</b>	<b>15,166</b>	<b>16,812</b>	<b>-9.8%</b>	<b>26,714</b>	<b>-43.2%</b>	<b>13,936</b>	<b>8.8%</b>	<b>24,177</b>	<b>-37.3%</b>

## METRORAIL AVERAGE SUNDAY BOARDINGS BY STATION

<b>Sundays</b>	<b>Average Sunday</b>	<b>Average Sunday</b>	<b>Percent Change</b>	<b>Average Sunday</b>	<b>Percent Change</b>	<b>Average Sunday</b>	<b>Percent Change</b>	<b>Average Sunday</b>	<b>Percent Change</b>
<b>STATIONS</b>	<b>Oct-21</b>	<b>Oct-20</b>	<b>YOY</b>	<b>Feb-20</b>	<b>Current vs Feb-20</b>	<b>Sep-21</b>	<b>MOM</b>	<b>Oct-19</b>	<b>YO2Y</b>
ALLAPATTAH	433	566	-23.4%	791	-45.2%	412	5.1%	730	-40.6%
BRICKELL	1,327	1,675	-20.8%	2,379	-44.2%	1,271	4.4%	1,994	-33.5%
BROWNSVILLE	264	403	-34.4%	406	-34.9%	252	5.0%	400	-33.8%
CIVIC CENTER	402	521	-22.8%	791	-49.2%	345	16.5%	721	-44.2%
COCONUT GROVE	397	437	-9.3%	838	-52.7%	427	-7.1%	630	-37.0%
CULMER	317	442	-28.2%	616	-48.5%	296	7.3%	481	-34.1%
DADELAND NORTH	822	1,202	-31.7%	1,685	-51.2%	820	0.2%	1,327	-38.1%
DADELAND SOUTH	1,109	1,259	-11.9%	2,210	-49.8%	1,089	1.8%	1,935	-42.7%
DOUGLAS ROAD	657	684	-4.0%	1,090	-39.7%	593	10.8%	894	-26.6%
DR. MARTIN LUTHER KING, JR.	287	373	-23.1%	506	-43.3%	254	12.9%	455	-37.0%
EARLINGTON HEIGHTS	415	507	-18.1%	799	-48.1%	376	10.4%	693	-40.1%
GOVERNMENT CENTER	1,550	1,486	4.4%	4,044	-61.7%	1,384	12.0%	2,634	-41.1%
HIALEAH	280	317	-11.5%	472	-40.6%	266	5.6%	446	-37.1%
MIAMI INTERNATIONAL AIRPORT	648	534	21.2%	1,343	-51.8%	565	14.6%	1,246	-48.0%
NORTHSIDE	460	512	-10.2%	653	-29.5%	427	7.8%	661	-30.4%
OKEECHOBEE	150	213	-29.5%	273	-45.2%	146	2.6%	242	-38.0%
OVERTOWN / ARENA	292	394	-25.9%	544	-46.3%	260	12.5%	430	-32.1%
PALMETTO	161	212	-23.8%	336	-52.1%	148	8.9%	238	-32.1%
SANTA CLARA	157	222	-29.4%	280	-43.9%	147	7.0%	236	-33.6%
SOUTH MIAMI	541	488	10.8%	987	-45.1%	484	11.9%	800	-32.4%
TRI-RAIL	307	276	11.1%	528	-41.9%	278	10.3%	430	-28.7%
UNIVERSITY	328	190	72.3%	608	-46.1%	360	-9.0%	428	-23.4%
VIZCAYA	274	285	-3.6%	524	-47.7%	268	2.3%	409	-32.9%
<b>TOTAL</b>	<b>11,577</b>	<b>13,197</b>	<b>-12.3%</b>	<b>22,701</b>	<b>-49.0%</b>	<b>10,865</b>	<b>6.6%</b>	<b>18,458</b>	<b>-37.3%</b>

## METRORAIL TOTAL MONTHLY BOARDINGS BY STATION

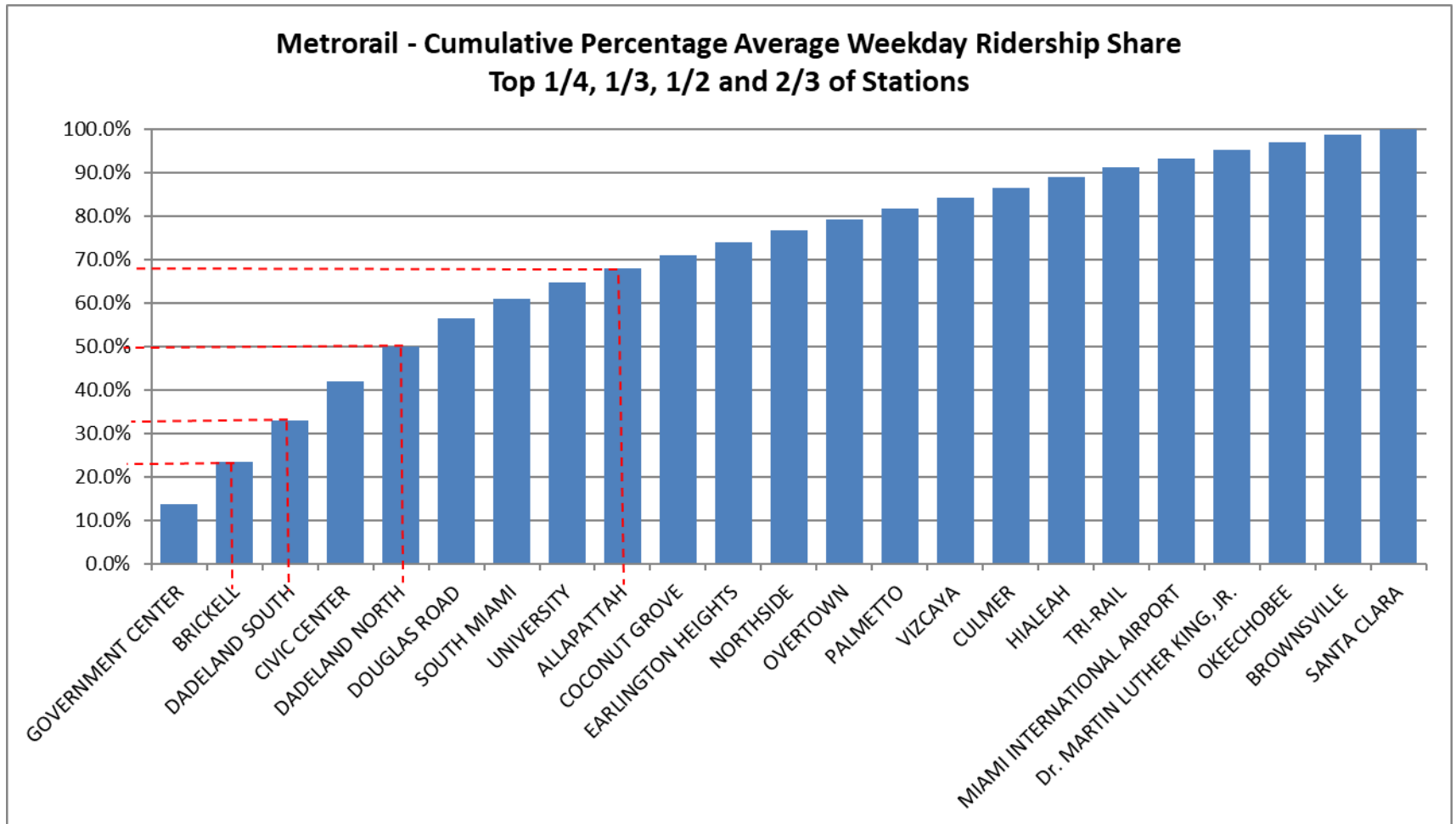
Monthly Totals	Total Month	Total Month	Percent Change	Total Month	Percent Change	Total Month	Percent Change	Total Month	Percent Change
STATIONS	Oct-21	Oct-20	YOY	Feb-20	Current vs Feb-20	Sep-21	MOM	Oct-19	YO2Y
ALLAPATTAH	27,803	32,131	-13.5%	46,868	-40.7%	25,620	8.5%	48,502	-42.7%
BRICKELL	85,515	90,751	-5.8%	152,259	-43.8%	81,807	4.5%	158,549	-46.1%
BROWNSVILLE	15,226	19,383	-21.4%	21,285	-28.5%	14,787	3.0%	22,851	-33.4%
CIVIC CENTER	66,983	55,722	20.2%	128,921	-48.0%	64,252	4.3%	142,848	-53.1%
COCONUT GROVE	26,839	23,047	16.5%	43,580	-38.4%	25,339	5.9%	43,458	-38.2%
CULMER	20,396	23,124	-11.8%	33,497	-39.1%	18,869	8.1%	33,967	-40.0%
DADELAND NORTH	67,396	73,088	-7.8%	132,894	-49.3%	63,476	6.2%	144,203	-53.3%
DADELAND SOUTH	80,481	66,949	20.2%	162,416	-50.4%	76,684	5.0%	179,071	-55.1%
DOUGLAS ROAD	53,656	45,660	17.5%	82,141	-34.7%	49,896	7.5%	87,630	-38.8%
DR. MARTIN LUTHER KING, JR.	17,274	20,469	-15.6%	27,980	-38.3%	16,172	6.8%	30,724	-43.8%
EARLINGTON HEIGHTS	24,540	25,822	-5.0%	40,697	-39.7%	22,688	8.2%	42,381	-42.1%
GOVERNMENT CENTER	114,138	84,812	34.6%	243,414	-53.1%	106,675	7.0%	251,960	-54.7%
HIALEAH	20,050	20,677	-3.0%	29,516	-32.1%	18,776	6.8%	32,988	-39.2%
MIAMI INTERNATIONAL AIRPORT	21,319	17,011	25.3%	46,115	-53.8%	19,041	12.0%	45,935	-53.6%
NORTHSIDE	24,913	25,196	-1.1%	36,127	-31.0%	22,449	11.0%	38,281	-34.9%
OKEECHOBEE	15,332	16,105	-4.8%	26,026	-41.1%	14,787	3.7%	29,311	-47.7%
OVERTOWN / ARENA	21,539	18,959	13.6%	49,911	-56.8%	19,870	8.4%	53,029	-59.4%
PALMETTO	20,638	18,629	10.8%	33,944	-39.2%	19,296	7.0%	35,499	-41.9%
SANTA CLARA	11,224	13,477	-16.7%	19,245	-41.7%	10,347	8.5%	19,627	-42.8%
SOUTH MIAMI	38,089	29,400	29.6%	69,412	-45.1%	35,502	7.3%	73,925	-48.5%
TRI-RAIL	19,139	17,675	8.3%	29,120	-34.3%	18,026	6.2%	29,168	-34.4%
UNIVERSITY	31,732	14,414	120.1%	61,253	-48.2%	32,855	-3.4%	65,589	-51.6%
VIZCAYA	20,161	17,024	18.4%	32,497	-38.0%	18,535	8.8%	33,670	-40.1%
<b>TOTAL</b>	<b>844,383</b>	<b>769,525</b>	<b>9.7%</b>	<b>1,549,118</b>	<b>-45.5%</b>	<b>795,749</b>	<b>6.1%</b>	<b>1,643,166</b>	<b>-48.6%</b>

# **METRORAIL HOLIDAY BOARDINGS BY STATION** **Columbus Day Holiday**

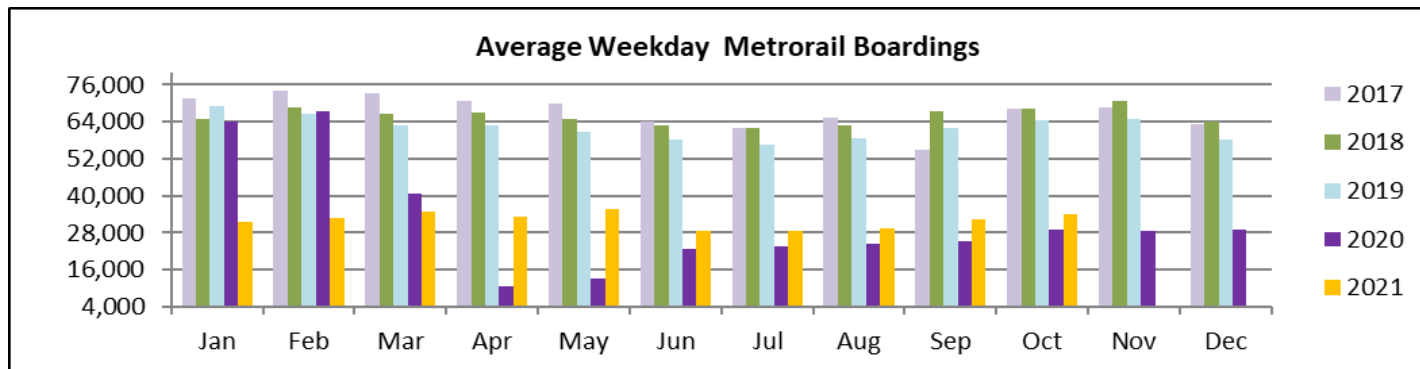
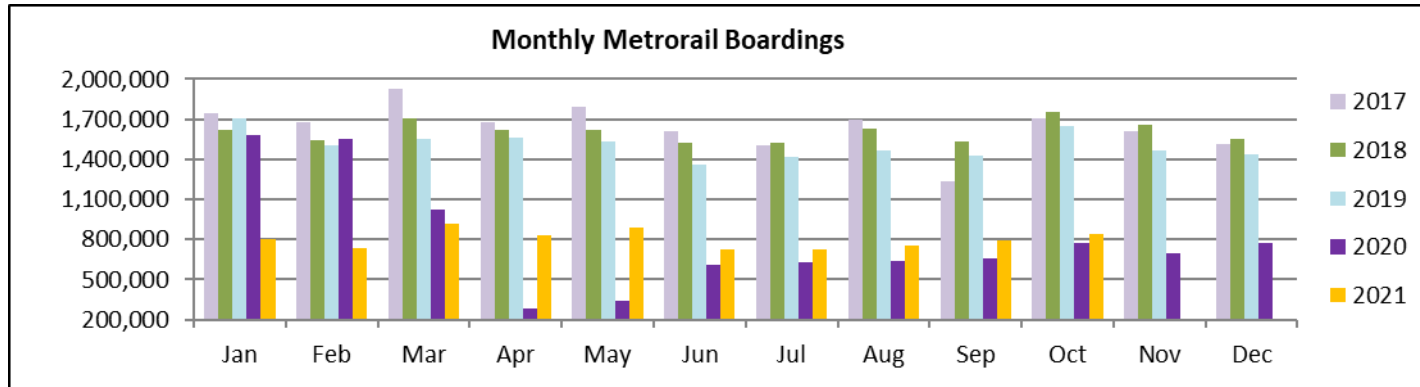
	Columbus Day	Columbus Day	Percent Change
<b>STATIONS</b>	<b>2020</b>	<b>2021</b>	<b>21 vs 20</b>
ALLAPATTAH	1,141	996	-12.7%
BRICKELL	3,092	3,148	1.8%
BROWNSVILLE	646	572	-11.5%
CIVIC CENTER	2,015	2,440	21.1%
COCONUT GROVE	762	964	26.5%
CULMER	764	766	0.3%
DADELAND NORTH	2,451	2,262	-7.7%
DADELAND SOUTH	2,306	2,783	20.7%
DOUGLAS ROAD	1,672	2,031	21.5%
DR. MARTIN LUTHER KING, JR.	706	603	-14.6%
EARLINGTON HEIGHTS	935	872	-6.7%
GOVERNMENT CENTER	2,960	3,781	27.7%
HIALEAH	794	709	-10.7%
MIAMI INTERNATIONAL AIRPORT	627	714	13.9%
NORTHSIDE	875	863	-1.4%
OKEECHOBEE	558	551	-1.3%
OVERTOWN/ ARENA	670	674	0.6%
PALMETTO	695	774	11.4%
SANTA CLARA	499	409	-18.0%
SOUTH MIAMI	879	1,358	54.5%
TRI-RAIL	642	756	17.8%
UNIVERSITY	445	1,243	179.3%
VIZCAYA	519	706	36.0%
<b>TOTAL</b>	<b>26,653</b>	<b>29,975</b>	<b>12.5%</b>



## METRORAIL CUMULATIVE PERCENTAGE RIDERSHIP SHARE



# **TOTAL MONTHLY AND AVERAGE WEEKDAY RIDERSHIP YEAR OVER YEAR COMPARISON CHARTS – METRORAIL**



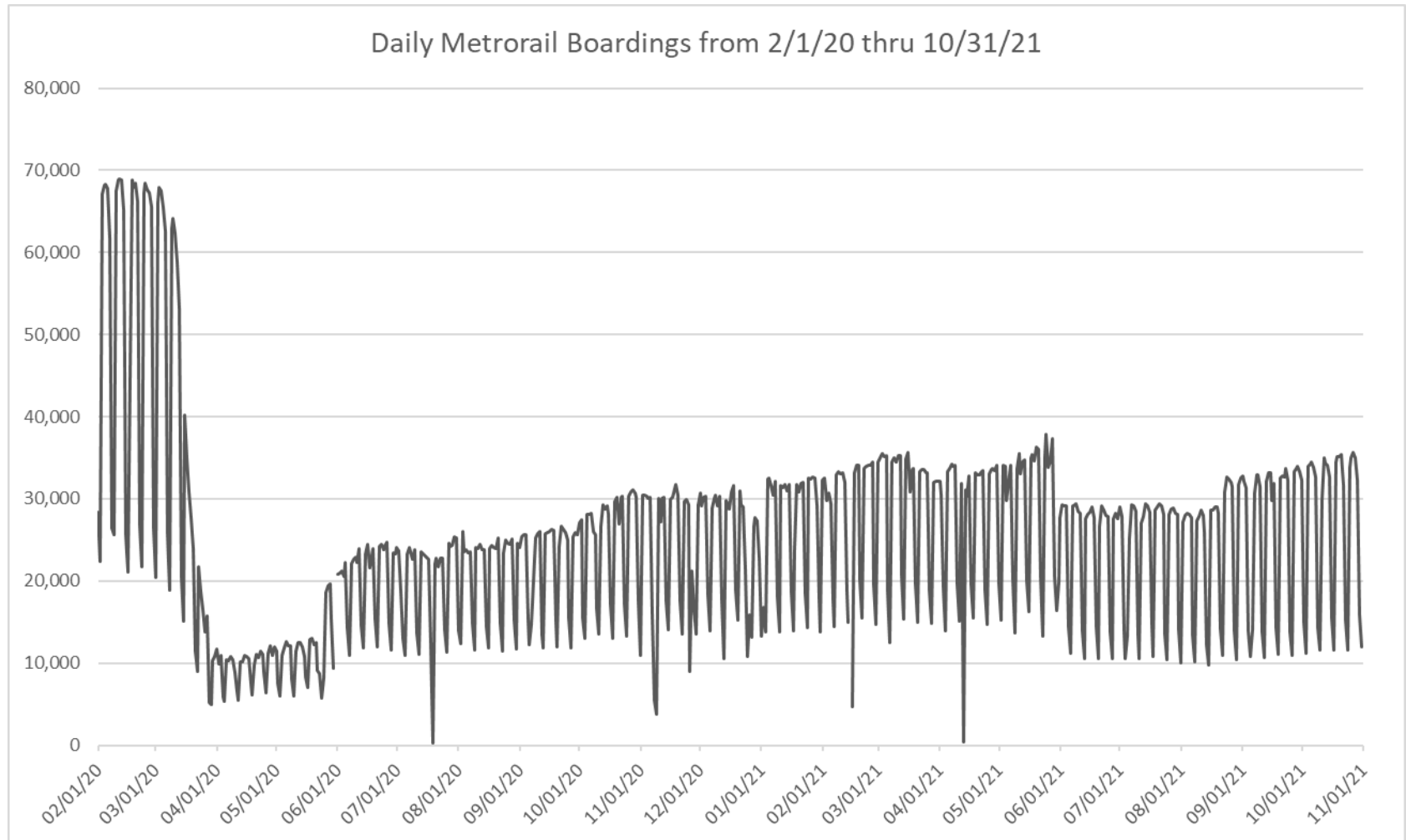
## “TOP 5 / BOTTOM 5” RAIL STATIONS AVERAGE WEEKDAY RIDERSHIP PERFORMANCE YEAR OVER YEAR COMPARISONS

Station	Oct-21	Oct-20	Absolute Delta (1)	Percent Delta
GOVERNMENT CENTER	4,636	3,171	1,465	46.2%
DADELAND SOUTH	3,249	2,468	781	31.7%
UNIVERSITY	1,329	561	768	136.8%
CIVIC CENTER	2,999	2,321	678	29.2%
DOUGLAS ROAD	2,185	1,718	467	27.2%
ALLAPATTAH	1,074	1,187	-114	-9.6%
BROWNSVILLE	579	687	-108	-15.7%
Dr. MARTIN LUTHER KING, JR.	675	745	-71	-9.5%
SANTA CLARA	442	497	-55	-11.0%
CULMER	805	852	-47	-5.5%

(1) Averages rounded to the nearest boarding.

(2) As a result of the SARS-CoV-2 pandemic, rides were fare-free beginning March 22, 2020; many rail stations continued reporting YOY gains in October 2021, since October 2020 showed clear reduction effects on ridership from the SARS-CoV-2 pandemic. Fares were reinstated June 1, 2021, and ridership data from the faregate system rather than the video camera counter system is utilized from that date going forward.

## DAILY METRORAIL RIDERSHIP SINCE FEBRUARY 1, 2020



- (1) National Emergency was declared on 3/13/20 as a result of the SARS-CoV-2 pandemic.
- (2) There was no Metrobus, Metrorail and Metromover service on 5/31/20, as a safety precaution.
- (3) The dip at the start of the second week of November 2020 is due to Hurricane Eta; these are *raw data* from the Unleash Live contractor AI video system.
- (4) The dip on 4/13/21 is due to a loss of connectivity at all stations, affecting a few stations over the next two days as well.
- (5) The reduction seen beginning 6/1/21 is partly due to the resumption of fares and partly the result of resuming reporting Cubi faregate data rather than video camera counts.
- (6) Periodic (weekly) variations are prominent, since weekday ridership is almost always significantly higher than weekend or holiday ridership.

## METRORAIL PARKING PATRONAGE SUMMARY

### October 2021

PARK-RIDE LOT	ACTUAL CAPACITY (1)	ACTUAL OCCUPANCY (2)	PERCENT OCCUPANCY
DADELAND SOUTH	1,260	442	35%
DADELAND NORTH	1,963	700	36%
SOUTH MIAMI	837	249	30%
UNIVERSITY	230	98	43%
DOUGLAS ROAD	230	227	99%
COCONUT GROVE, (*)	100	0	0%
VIZCAYA	120	41	34%
CULMER	40	7	18%
SANTA CLARA	61	43	71%
ALLAPATTAH	74	2	3%
EARLINGTON HEIGHTS	361	43	12%
BROWNSVILLE	100	38	38%
DR. MARTIN LUTHER KING JR. (MDT), (*)	62	0	0%
DR. MARTIN LUTHER KING JR. (GARAGE), (*)	631	0	0%
NORTHSIDE	100	77	77%
HIALEAH	338	38	11%
OKEECHOBEE	1,256	140	11%
PALMETTO	700	160	23%
<b>TOTAL</b>	<b>8,463</b>	<b>2,307</b>	<b>27%</b>

- (1) Number of spaces could vary each week; shown are available spaces during final week of month, as submitted by DTPW Safety & Security office.  
 (2) All occupancy data provided by DTPW Safety & Security office.  
 (3) Daily averages rounded to nearest unit, with fewer counts at some stations due to shortage of DTPW Safety & Security office staff; calculations are based on counted days only per raw data submitted, with resulting average daily occupancy shown.  
 (\*) Closed throughout the month, per the DTPW Safety & Security office.

# Metromover



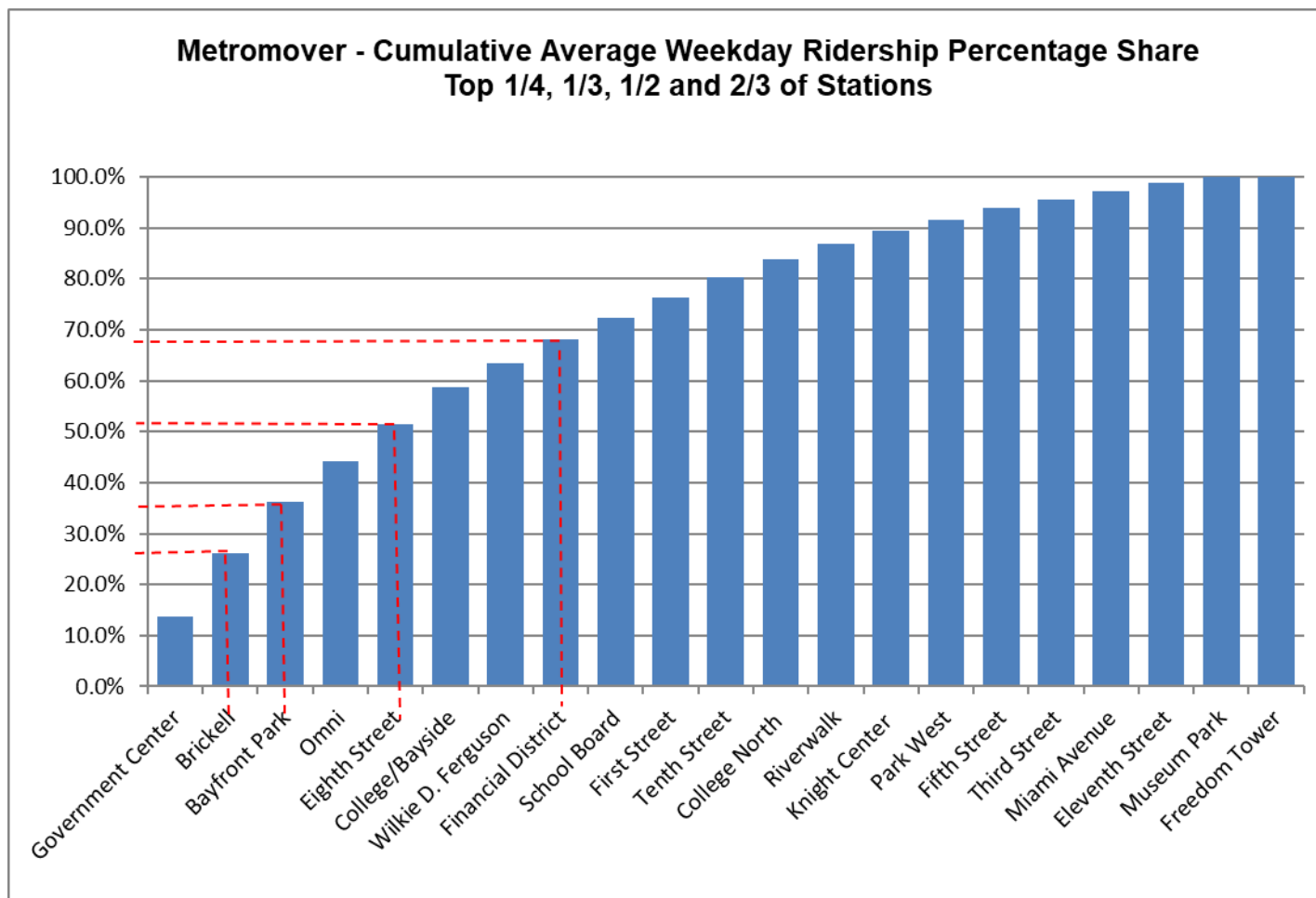
## METROMOVER MONTHLY AND AVERAGE DAILY BOARDINGS BY STATION

	Average Weekday	Average Weekday	Percent Change	Average Saturday	Average Saturday	Percent Change	Average Sunday	Average Sunday	Percent Change	Columbus Day	Columbus Day	Percent Change	Total Monthly	Total Monthly	Percent Change
STATIONS	Oct-21	Oct-20	21 vs 20	Oct-21	Oct-20	21 vs 20	Oct-21	Oct-20	21 vs 20	Oct-21	Oct-20	21 vs 20	Oct-21	Oct-20	21 vs 20
School Board	608	374	62.6%	482	294	63.9%	434	245	77.2%	561	341	64.5%	17,303	10,645	62.5%
Omni	1,156	762	51.6%	991	696	42.4%	821	582	41.2%	1,117	678	64.7%	33,289	22,494	48.0%
Museum Park	172	98	75.8%	265	129	104.9%	222	115	92.7%	164	48	241.7%	6,046	3,214	88.1%
Eleventh Street	230	161	42.7%	175	101	73.5%	133	80	66.5%	230	120	91.7%	6,367	4,327	47.1%
Park West	318	192	66.3%	423	173	145.1%	202	139	45.8%	486	195	149.2%	7,457	5,635	32.3%
Freedom Tower (1)															
Government Center	1,966	1,294	52.0%	1,371	916	49.6%	1,167	761	53.4%	1,749	1,140	53.4%	53,760	35,932	49.6%
Miami Avenue	232	213	8.8%	171	167	2.4%	148	199	-25.4%	211	208	1.4%	5,346	6,315	-15.3%
Third Street	250	150	66.7%	189	97	94.3%	143	104	38.0%	229	194	18.0%	6,885	4,242	62.3%
Knight Center	371	280	32.7%	254	151	67.8%	189	133	42.5%	338	208	62.5%	9,980	7,372	35.4%
Bayfront Park	1,428	834	71.3%	1,293	723	78.8%	1,139	709	60.8%	1,337	704	89.9%	42,055	24,662	70.5%
First Street	560	620	-9.7%	485	518	-6.5%	400	443	-9.8%	368	671	-45.2%	15,435	18,065	-14.6%
College/Bayside	1,024	514	99.2%	813	528	53.9%	672	424	58.5%	1,112	564	97.2%	19,902	15,696	26.8%
College North	525	256	105.1%	331	153	116.6%	236	87	171.7%	478	228	109.6%	13,814	6,716	105.7%
Wilkie D. Ferguson	690	300	129.8%	506	220	129.7%	375	200	87.6%	610	224	172.3%	18,816	8,431	123.2%
Riverwalk	407	201	102.5%	383	146	162.3%	303	118	157.5%	326	153	113.1%	11,886	5,570	113.4%
Fifth Street	314	199	57.8%	243	149	63.7%	170	87	95.6%	282	69	308.7%	8,636	5,343	61.6%
Eighth Street	1,042	474	119.8%	891	382	133.0%	666	302	120.9%	794	390	103.6%	29,416	13,461	118.5%
Tenth Street	555	333	66.5%	371	229	61.8%	315	150	109.9%	354	319	11.0%	14,887	9,066	64.2%
Brickell	1,769	1,107	59.8%	1,426	975	46.3%	1,222	839	45.6%	1,625	922	76.2%	50,238	32,404	55.0%
Financial District	666	393	69.5%	396	244	62.2%	334	166	101.6%	571	318	79.6%	17,547	10,454	67.8%
<b>TOTAL</b>	<b>14,284</b>	<b>8,756</b>	<b>63.1%</b>	<b>11,458</b>	<b>6,993</b>	<b>63.9%</b>	<b>9,291</b>	<b>5,879</b>	<b>58.0%</b>	<b>12,942</b>	<b>7,694</b>	<b>68.2%</b>	<b>389,065</b>	<b>250,044</b>	<b>55.6%</b>

(1) Freedom Tower Station was closed for construction.

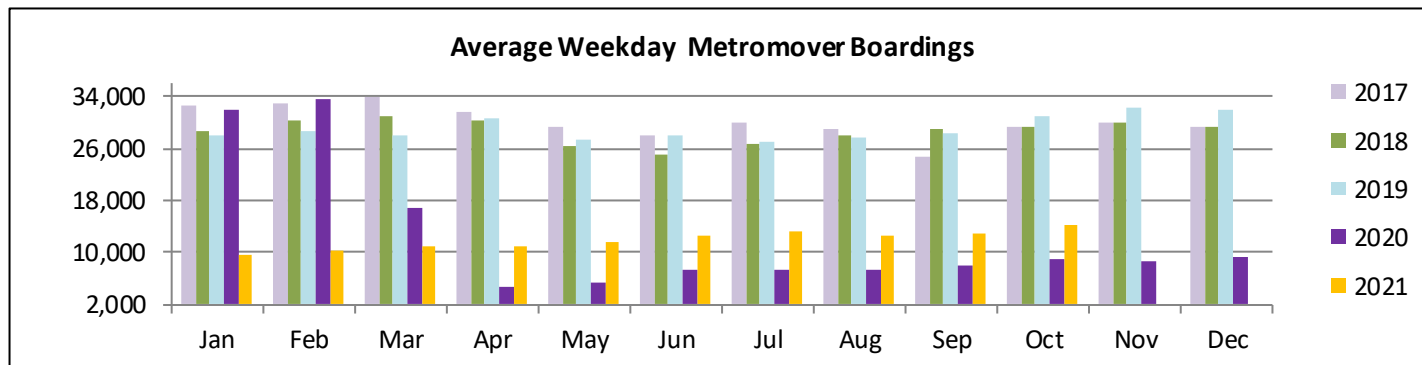
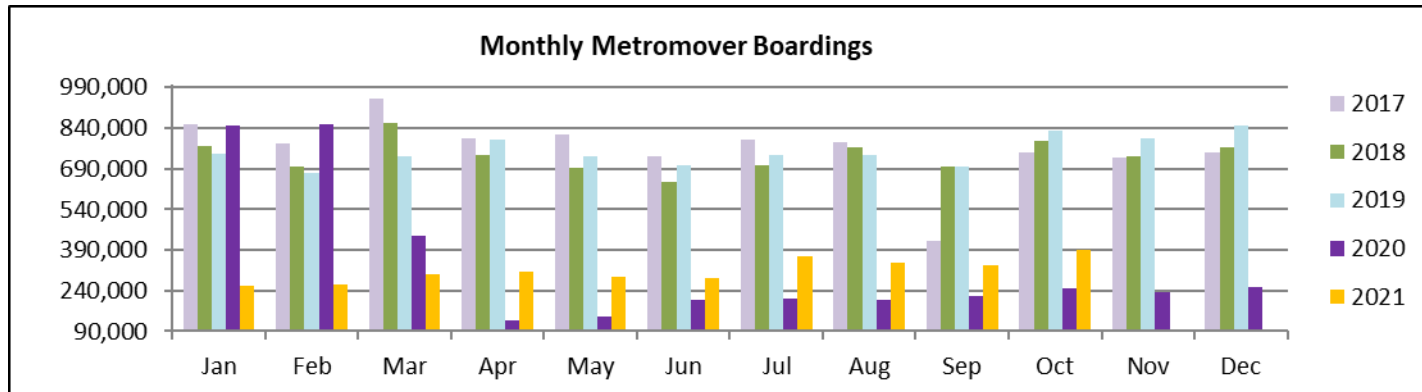
(\*) APC system did not report boardings data at several stations on several days in October 2021; the average daily ridership calculations take this into account.

## METROMOVER CUMULATIVE PERCENTAGE RIDERSHIP SHARE





# **TOTAL MONTHLY AND AVERAGE WEEKDAY RIDERSHIP YEAR OVER YEAR COMPARISON CHARTS – METROMOVER**



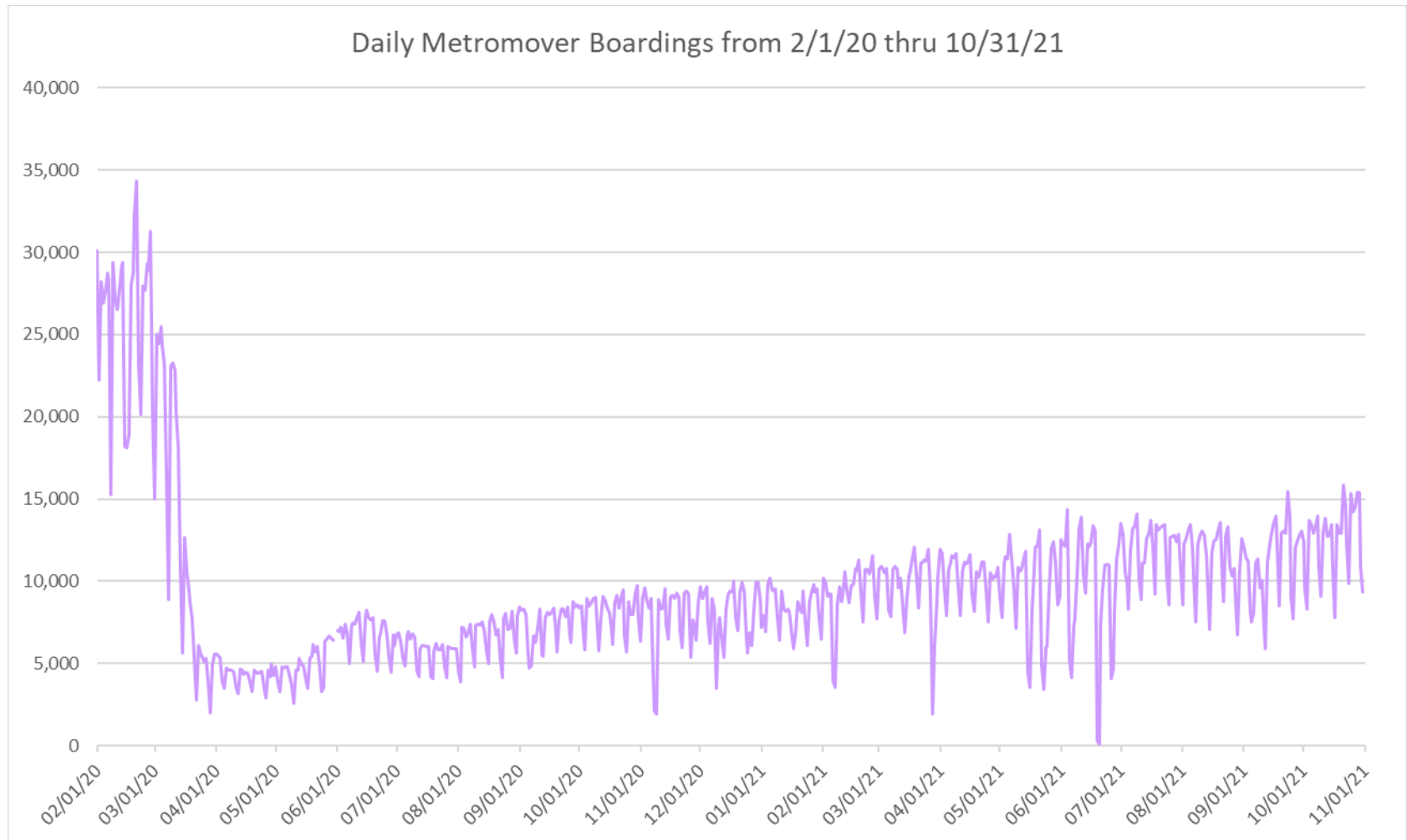
**“TOP 5 / BOTTOM 5” MOVER STATIONS AVERAGE WEEKDAY RIDERSHIP PERFORMANCE  
YEAR OVER YEAR COMPARISONS**

<b>Station</b>	<b>Oct-21</b>	<b>Oct-20</b>	<b>Absolute Delta (1)</b>	<b>Percent Delta</b>
Government Center	1,966	1,294	672	52.0%
Brickell	1,769	1,107	662	59.8%
Bayfront Park	1,428	834	594	71.3%
Eighth Street	1,042	474	568	119.8%
College/Bayside	1,024	514	510	99.2%
First Street	560	620	-60	-9.7%
Miami Avenue	232	213	19	8.8%
Eleventh Street	230	161	69	42.7%
Museum Park	172	98	74	75.8%
Knight Center	371	280	92	32.7%

(1) Averages rounded to the nearest boarding.

(†) Nearly all Metromover stations reporting YOY gains in October 2021, as October 2020 showed clear reduction effects on ridership from the SARS-CoV-2 pandemic.

## DAILY METROMOVER RIDERSHIP SINCE FEBRUARY 1, 2020



- (1) National Emergency was declared on 3/13/20 as a result of the SARS-CoV-2 pandemic.
- (2) There was no Metrobus, Metrorail and Metromover service on 5/31/20, as a safety precaution.
- (3) The dip at the start of the second week of November 2020 is due to Hurricane Eta; these are *raw data* from the UTA contractor APC system. Other more recent dips are due to various station closures (mostly on weekends) for system maintenance purposes.
- (4) Periodic (weekly) variations are prominent, since weekday ridership is almost always significantly higher than weekend or holiday ridership.

## Special Transportation Services



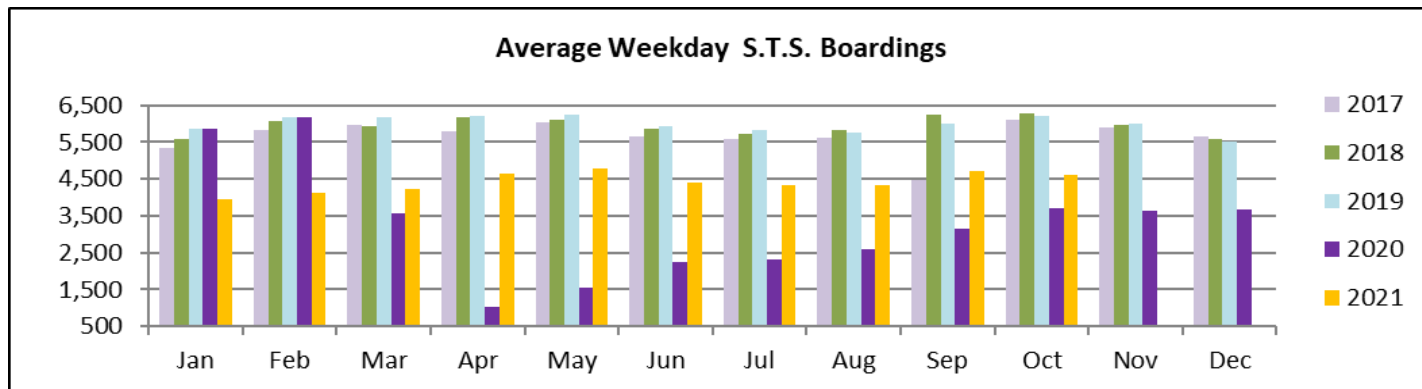
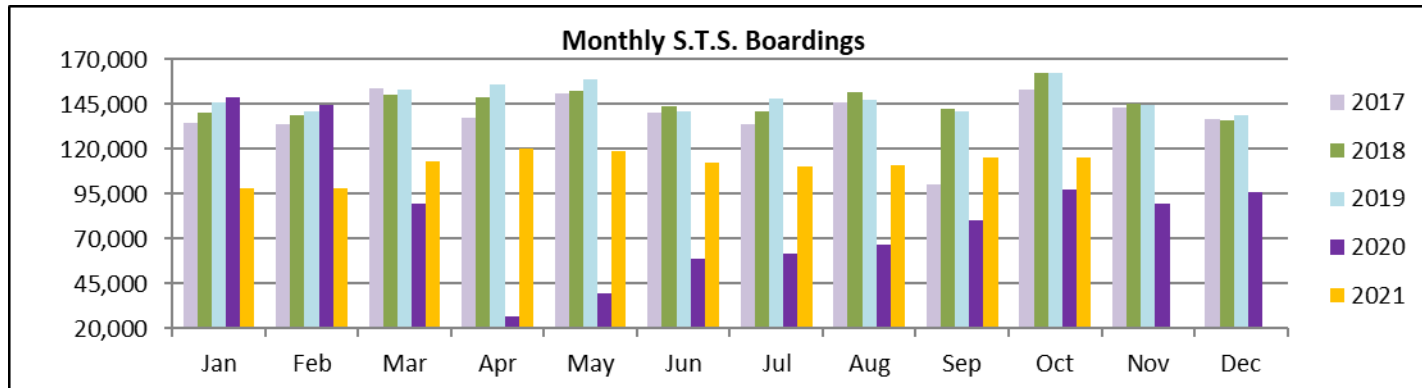
## STS MONTHLY AND AVERAGE DAILY BOARDINGS

### October 2021

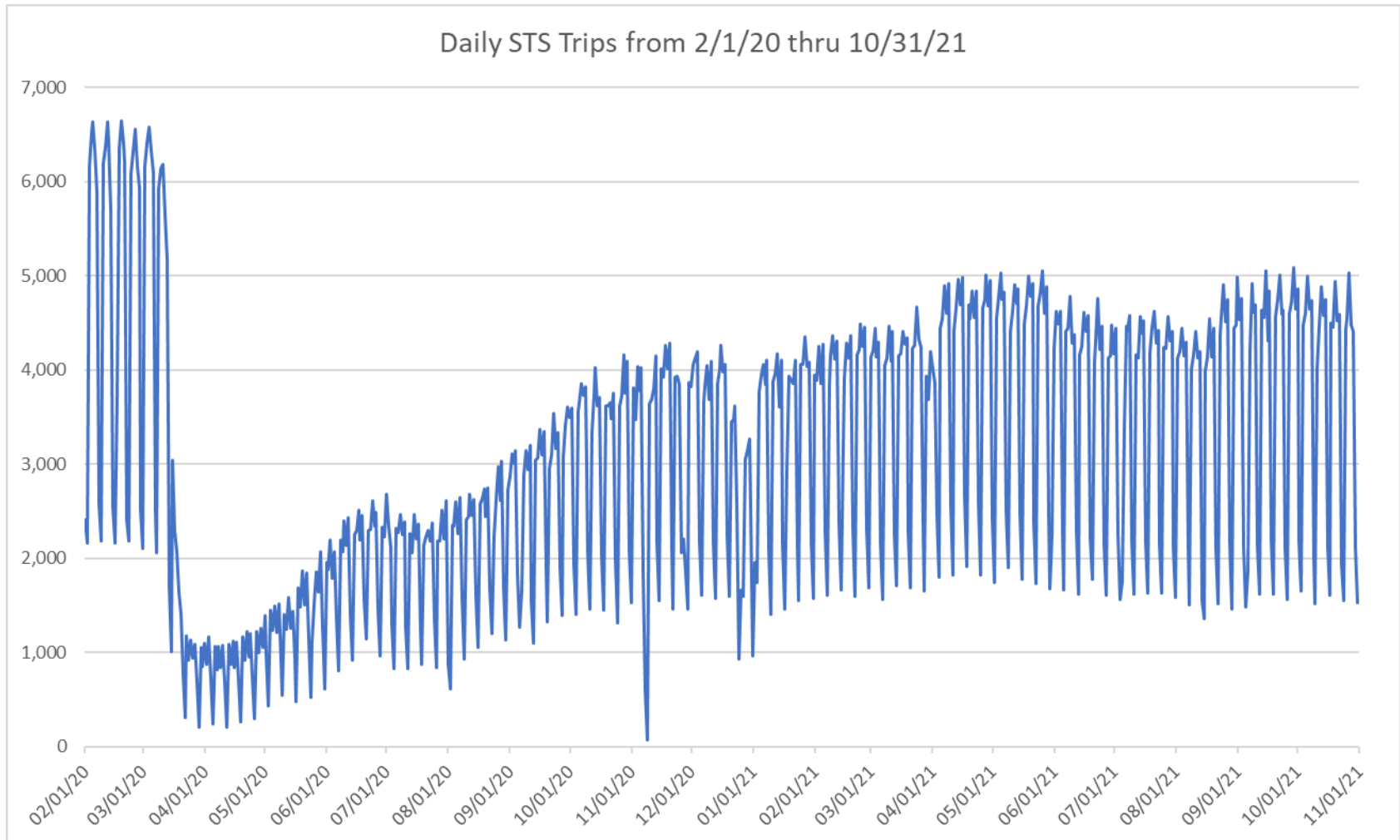
Measure	timeline	Ambulatory	Wheelchair	Total Clients (*)
<b>Average Weekday</b>	Oct-21	3,793	823	<b>4,615</b>
<b>Average Saturday</b>	Oct-21	1,655	412	<b>2,067</b>
<b>Average Sunday</b>	Oct-21	1,300	272	<b>1,572</b>
<b>Total Monthly</b>	<b>Oct-21</b>	<b>94,422</b>	<b>20,700</b>	<b>115,122</b>
<b>Average Weekday</b>	Oct-20	3,072	638	<b>3,710</b>
<b>Average Saturday</b>	Oct-20	1,674	351	<b>2,024</b>
<b>Average Sunday</b>	Oct-20	1,227	183	<b>1,410</b>
<b>Total Monthly</b>	<b>Oct-20</b>	<b>80,866</b>	<b>16,522</b>	<b>97,388</b>
<b>Average Weekday</b>	Oct-19	5,036	1,191	<b>6,227</b>
<b>Average Saturday</b>	Oct-19	2,088	583	<b>2,671</b>
<b>Average Sunday</b>	Oct-19	1,694	507	<b>2,201</b>
<b>Total Monthly</b>	<b>Oct-19</b>	<b>130,953</b>	<b>31,751</b>	<b>162,704</b>
<b>% Change Current vs. Oct 2020 Weekday</b>		23.4%	28.9%	24.4%
<b>% Change Current vs. Oct 2020 Saturday</b>		-1.1%	17.6%	2.1%
<b>% Change Current vs. Oct 2020 Sunday</b>		6.0%	48.9%	11.5%
<b>% Change Current vs. Oct 2020 Month Total</b>		<b>16.8%</b>	<b>25.3%</b>	<b>18.2%</b>
<b>% Change Current vs. Oct 2019 Weekday</b>		-24.7%	-30.9%	-25.9%
<b>% Change Current vs. Oct 2019 Saturday</b>		-20.7%	-29.3%	-22.6%
<b>% Change Current vs. Oct 2019 Sunday</b>		-23.3%	-46.3%	-28.6%
<b>% Change Current vs. Oct 2019 Month Total</b>		<b>-27.9%</b>	<b>-34.8%</b>	<b>-29.2%</b>

(\*) Trip count data provided by STS contractor.

# **TOTAL MONTHLY AND AVERAGE WEEKDAY RIDERSHIP YEAR OVER YEAR COMPARISON CHARTS – SPECIAL TRANSPORTATION SERVICES (S.T.S.)**



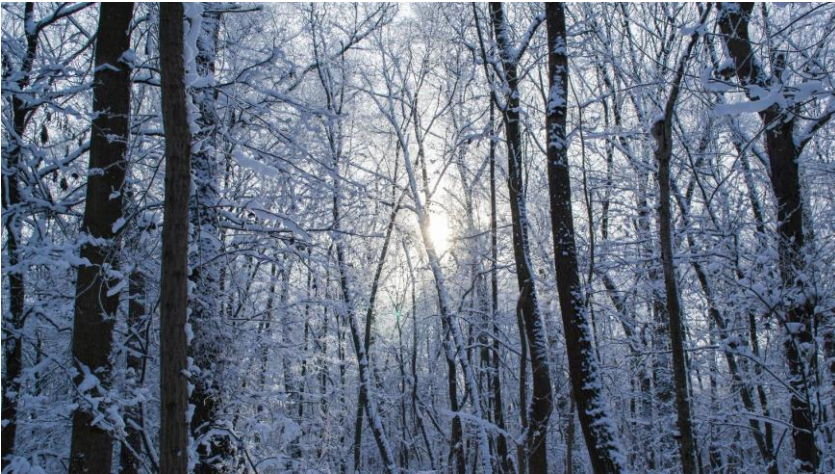
## DAILY STS RIDERSHIP SINCE FEBRUARY 1, 2020



- (1) National Emergency was declared on 3/13/20 as a result of the SARS-CoV-2 pandemic.
- (2) The dip at the start of the second week of November 2020 is due to Hurricane Eta.
- (3) Periodic (weekly) variations are prominent, since weekday ridership is almost always significantly higher than weekend or holiday ridership.

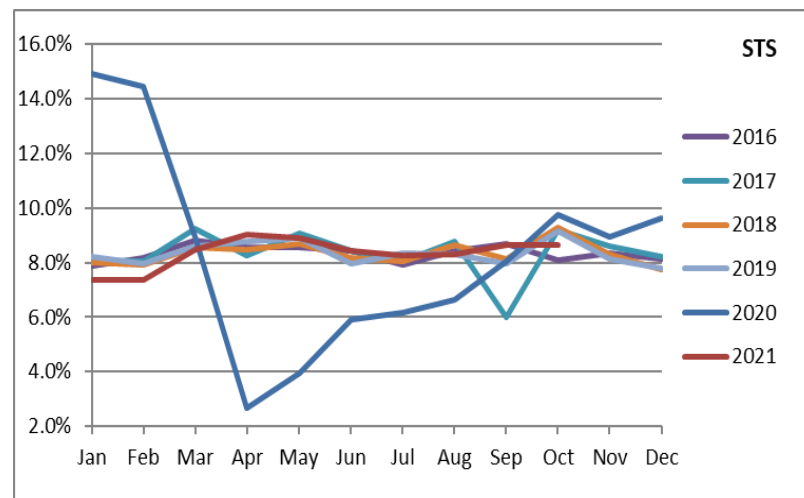
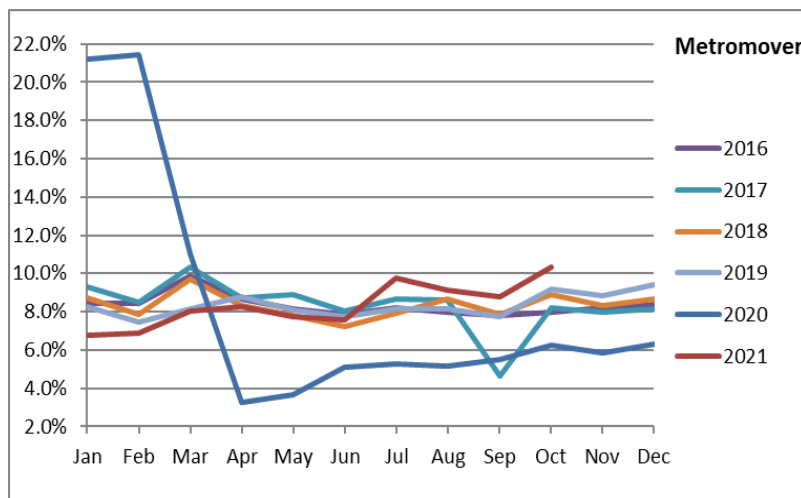
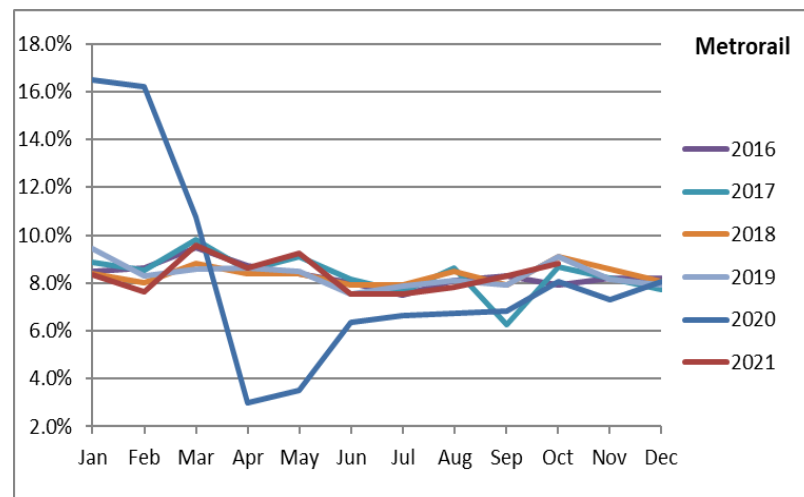
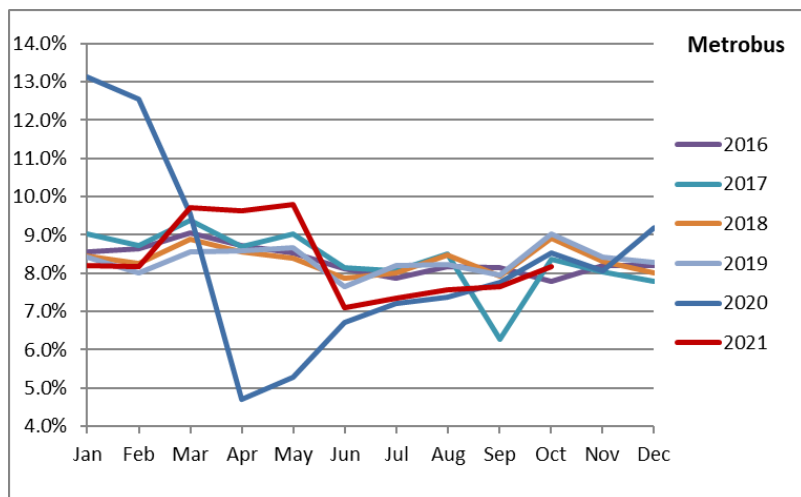


## Ridership Seasonality





# RIDERSHIP SEASONALITY – PERCENT RIDERSHIP SHARE BY MONTH AND CALENDAR YEAR FOR EACH MODE



Note: the prominent dips seen in the fall of 2017 and beginning in the spring of 2020 are due to Hurricane Irma and the SARS-CoV-2 pandemic, respectively. Reductions in Bus and Rail ridership share seen beginning in June 2021 are due to reinstatement of fares as well changes in reporting tools and datasets, as discussed earlier in this report.