



TRANSPORTATION AND PUBLIC WORKS

RIDERSHIP TECHNICAL REPORT

Division of Performance and Materials Management



November 2021

Table of Contents

<i>Table of Contents</i>	2-3
All Modes Overview	4
Total Monthly Weekday, Saturday and Sunday Monthly Boardings By Mode	5
Average Weekday, Saturday and Sunday Boardings by Mode	6
Metrobus Total Monthly Ridership Comparisons by Fiscal Year	7
Metrorail Total Monthly Ridership Comparisons by Fiscal Year	8
Metromover Total Monthly Ridership Comparisons by Fiscal Year	9
STS Total Monthly Ridership Comparisons by Fiscal Year	10
All-Modes Combined Total Monthly Ridership Comparisons By Fiscal Year	11
All Modes Combined Total Monthly and Average Weekday Ridership – Year over Year Comparison Charts	12
Average Weekday Ridership – Modal Splits	13
Daily Ridership for All Modes Combined since February 1, 2020	14
 Metrobus	 15
Metrobus Average Weekday Boardings by Route	16-18
Metrobus Average Saturday Boardings by Route	19-20
Metrobus Average Sunday Boardings by Route	21-22
Metrobus Monthly Total Boardings by Route	23-25
Metrobus Holiday Boardings by Route	26-28
Year-over-Year Bus Ridership by Route Service Type	29-30
Bus Routes as Ranked by Percentage of Average Weekday Ridership	31
Metrobus Cumulative Percentage Average Weekday Ridership Share by Route (Top 75%)	32
Total Monthly and Average Weekday Rail Ridership – Year over Year Comparison Charts	33
Bus “Top 5 / Bottom 5” Routes Average Weekday Ridership Performance	34
Daily Metrobus Ridership since February 1, 2020	35
Metrobus Parking Patronage Summary	36

Table of Contents (continued)

Metrorail	37
Metrorail Average Weekday Boardings by Station	38
Metrorail Average Saturday Boardings by Station	39
Metrorail Average Sunday Boardings by Station	40
Metrorail Total Monthly Boardings by Station	41
Metrorail Holiday Boardings	42
Metrorail Cumulative Percentage Average Weekday Ridership Share	43
Total Monthly and Average Weekday Rail Ridership – Year over Year Comparison Charts	44
“Top 5 / Bottom 5” Stations Average Weekday Ridership Performance	45
Daily Metrorail Ridership since February 1, 2020	46
Metrorail Parking Patronage Summary	47
 Metromover	 48
Monthly and Average Daily Mover Boardings by Station	49
Metromover Holiday Boardings by Station	50
Metromover Cumulative Percentage Average Weekday Ridership Share	51
Total Monthly and Average Weekday Mover Ridership – Year over Year Comparison Charts	52
“Top 5 / Bottom 5” Stations Average Weekday Ridership Performance	53
Daily Metromover Ridership since February 1, 2020	54
 Special Transportation Services (STS)	 55
STS Monthly and Average Daily Boardings	56
Total Monthly and Average Weekday STS Ridership – Year over Year Comparison Charts	57
Daily STS Ridership since February 1, 2020	58
 Ridership Seasonality	 59
Ridership Seasonality – Percent Ridership Share by Month and Calendar year for Each Mode	60

All Modes Overview



TOTAL MONTHLY WEEKDAY, SATURDAY AND SUNDAY BOARDINGS BY MODE November 2021

TRAVEL MODE	MONTH'S TOTAL WEEKDAYS (*) RIDERSHIP	MONTH'S TOTAL SATURDAYS RIDERSHIP	MONTH'S TOTAL SUNDAYS (**) RIDERSHIP	TOTAL MONTHLY RIDERSHIP	% CHANGE vs Nov 2020 TOTAL MONTH RIDERSHIP
METROBUS (1)	2,494,680	294,696	267,350	3,056,726	15.3%
METRORAIL (2)	724,381	64,960	61,540	850,881	21.6%
METROMOVER (3)	318,284	51,923	48,722	418,929	80.2%
STS PARATRANSIT (4)	93,913	7,978	8,398	110,289	23.4%
TOTAL	3,631,258	419,557	386,010	4,436,825	20.8%

(*) Total Bus and STS weekday ridership includes Thursday, November 11, 2021 (Veteran's Day Holiday) and Friday, November 26, 2021 (Friday-After-Thanksgiving, a County-observed holiday). Weekday ridership excludes those two holidays on Metrorail and Metromover. Ridership numbers for the two dates were respectively as follows:

Metrobus	111,169	and	95,236
Metrorail	28,817		20,905
Metromover	13,990		13,120
STS	3,203		1,927

(**) Total Bus and STS Sunday ridership includes Thursday, November 25, 2021 (Thanksgiving Day). Sunday ridership excludes Thanksgiving for Metrorail and Metromover. Ridership on that day was as follows:

Metrobus	44,686
Metrorail	10,720
Metromover	7,894
STS	2,201

- (1) Metrobus fares resumed on June 1, 2021, following a 14-month period of fare-free rides as a result of the SARS-CoV-2 pandemic. The NextFare System farebox data replaced the bus automatic passenger counter data as ridership data of record starting on that date.
- (2) Metrorail fares resumed on June 1, 2021, following a 14-month period of fare-free rides as a result of the SARS-CoV-2 pandemic. The NextFare System faregate data replaced the video data as ridership data of record starting on that date.
- (3) Beginning March 13, 2020 (day of National Emergency Declaration due to SARS-CoV-2 pandemic), only raw data from Metromover automatic passenger counters is reported; no estimates are performed after March 13, 2020.
- (4) Paratransit ridership data as reported by the contractor.

AVERAGE WEEKDAY, SATURDAY AND SUNDAY BOARDINGS BY MODE
November 2021

Travel Mode	Average Weekday (*)	Average Saturday	Average Sunday (**)	% Change Nov 2020 Weekday	% Change Nov 2020 Saturday	% Change Nov 2020 Sunday
METROBUS	119,526	73,705	53,582	15.9%	2.8%	6.1%
METRORAIL	35,508	16,240	12,705	23.6%	-4.0%	10.5%
METROMOVER	15,755	13,507	10,723	82.4%	91.2%	96.3%
STS PARATRANSIT	4,472	1,995	1,680	22.9%	0.3%	16.2%
Totals (1)	175,261	105,447	78,690	21.6%	8.0%	14.2%

(*) Average weekday ridership includes Veterans Day and Friday-After-Thanksgiving for Metrobus and STS but excludes it for Metrorail and Metromover.

(**) Average Sunday ridership includes Thanksgiving Day for Metrobus and STS, but excludes it for Metrorail and Metromover

(***) Average ridership is calculated and published only for those days and stations with nontrivial amounts of reported data.

METROBUS TOTAL MONTHLY RIDERSHIP COMPARISONS BY FISCAL YEAR

Bus	FY 18	FY 19	Variance 18 to 19	FY 20	Variance 19 to 20	FY 21	FY 22	Variance 21 to 22	Variance 19 to 22	Variance 18 to 22
Oct	4,709,590	4,554,886	-3.3%	4,507,012	-1.1%	2,805,139	3,081,157	9.8%	-32.4%	-34.6%
Nov	4,522,250	4,245,535	-6.1%	4,197,225	-1.1%	2,651,290	3,056,726	15.3%	-28.0%	-32.4%
Dec	4,380,099	4,081,581	-6.8%	4,126,990	1.1%	3,022,530				
Jan	4,307,001	4,195,911	-2.6%	4,316,998	2.9%	3,082,746				
Feb	4,208,811	3,994,019	-5.1%	4,123,083	3.2%	3,076,966				
Mar	4,534,564	4,266,768	-5.9%	3,136,162	-26.5%	3,660,639				
Apr	4,360,997	4,291,135	-1.6%	1,544,316	-64.0%	3,625,048				
May	4,277,628	4,330,922	1.2%	1,734,609	-59.9%	3,683,343				
Jun	4,009,340	3,823,863	-4.6%	2,210,725	-42.2%	2,672,570				
Jul	4,080,664	4,094,906	0.3%	2,366,749	-42.2%	2,769,907				
Aug	4,326,980	4,109,613	-5.0%	2,422,014	-41.1%	2,843,552				
Sep	4,041,992	3,971,220	-1.8%	2,546,923	-35.9%	2,877,110				
FY Total	51,759,916	49,960,359	-3.5%	37,232,806	-25.5%	36,770,840				

METRORAIL TOTAL MONTHLY RIDERSHIP COMPARISONS BY FISCAL YEAR

Rail	FY 18	FY 19	Variance 18 to 19	FY 20	Variance 19 to 20	FY 21	FY 22	Variance 21 to 22	Variance 19 to 22	Variance 18 to 22
Oct	1,708,564	1,757,225	2.8%	1,643,166	-6.5%	769,525	844,383	9.7%	-51.9%	-50.6%
Nov	1,609,888	1,656,929	2.9%	1,469,448	-11.3%	699,492	850,881	21.6%	-48.6%	-47.1%
Dec	1,517,341	1,553,804	2.4%	1,433,928	-7.7%	769,194				
Jan	1,615,576	1,708,695	5.8%	1,576,340	-7.7%	799,119				
Feb	1,545,581	1,501,458	-2.9%	1,549,118	3.2%	730,792				
Mar	1,700,714	1,554,851	-8.6%	1,027,319	-33.9%	917,097				
Apr	1,619,890	1,559,446	-3.7%	287,803	-81.5%	827,414				
May	1,618,504	1,531,597	-5.4%	337,696	-78.0%	887,111				
Jun	1,524,311	1,359,966	-10.8%	608,758	-55.2%	723,469				
Jul	1,527,380	1,419,158	-7.1%	632,964	-55.4%	722,159				
Aug	1,632,471	1,463,646	-10.3%	641,275	-56.2%	749,578				
Sep	1,530,088	1,427,726	-6.7%	654,244	-54.2%	795,749				
Total	19,150,308	18,494,501	-3.4%	11,862,059	-35.9%	9,390,699				

METROMOVER TOTAL MONTHLY RIDERSHIP COMPARISONS BY FISCAL YEAR

Mover	FY 18	FY 19	Variance 18 to 19	FY 20	Variance 19 to 20	FY 21	FY 22	Variance 21 to 22	Variance 19 to 22	Variance 18 to 22
Oct	751,323	790,533	5.2%	831,234	5.1%	250,044	389,065	55.6%	-50.8%	-48.2%
Nov	729,519	735,198	0.8%	799,632	8.8%	232,422	418,929	80.2%	-43.0%	-42.6%
Dec	748,797	767,239	2.5%	849,832	10.8%	251,019				
Jan	772,122	746,728	-3.3%	847,773	13.5%	255,968				
Feb	698,107	675,160	-3.3%	855,398	26.7%	260,332				
Mar	859,143	737,814	-14.1%	441,200	-40.2%	302,502				
Apr	740,036	795,696	7.5%	130,549	-83.6%	310,772				
May	694,106	734,645	5.8%	146,454	-80.1%	292,922				
Jun	641,675	701,318	9.3%	203,637	-71.0%	286,145				
Jul	700,462	739,814	5.6%	210,596	-71.5%	368,847				
Aug	768,728	739,785	-3.8%	205,995	-72.2%	344,319				
Sep	698,505	699,879	0.2%	219,696	-68.6%	331,915				
Total	8,802,523	8,863,809	0.7%	5,741,996	-35.2%	3,487,207				

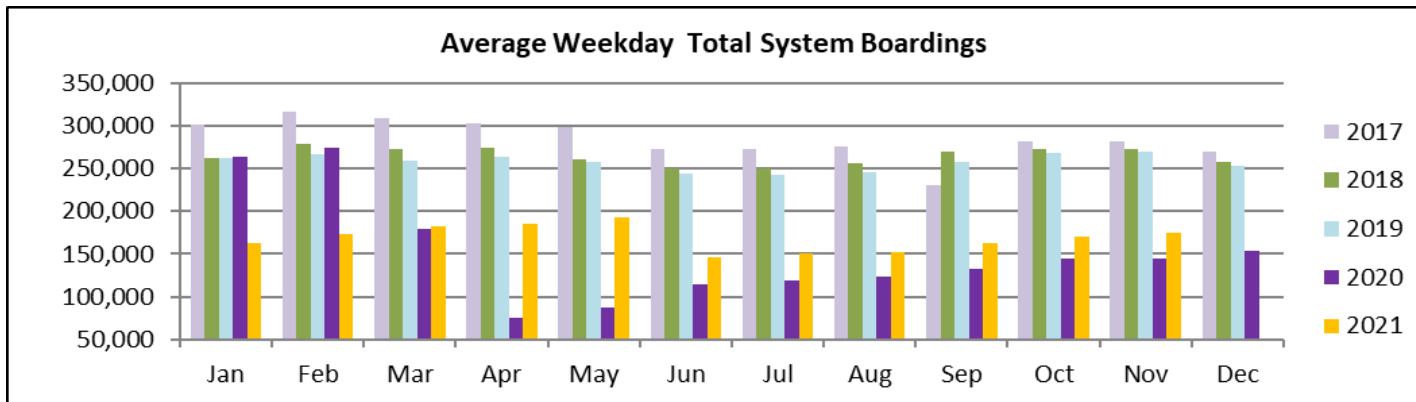
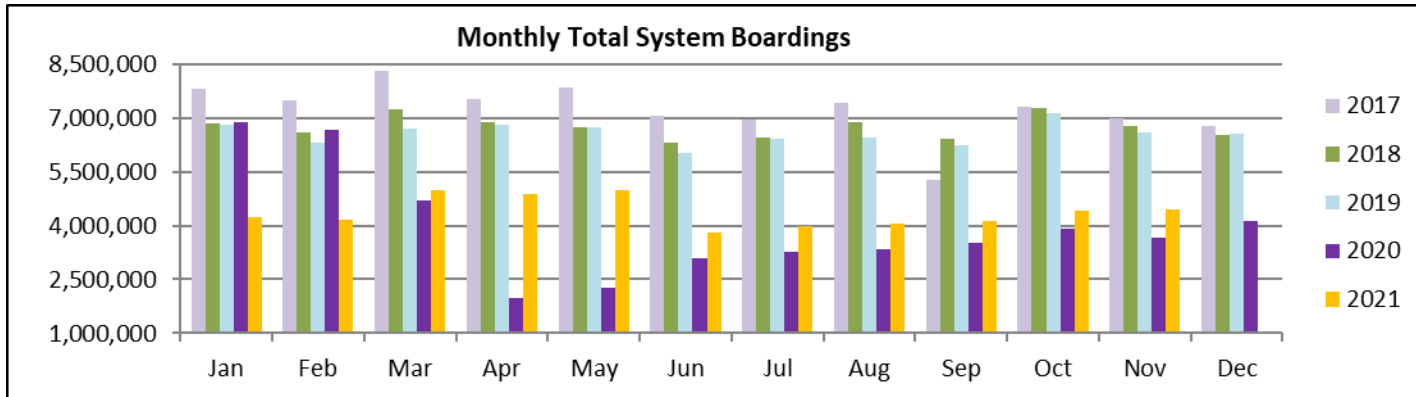
SPECIAL TRANSPORTATION SERVICES (STS) TOTAL MONTHLY RIDERSHIP COMPARISONS BY FISCAL YEAR

STS	FY 18	FY 19	Variance 18 to 19	FY 20	Variance 19 to 20	FY 21	FY 22	Variance 21 to 22	Variance 19 to 22	Variance 18 to 22
Oct	153,409	162,564	6.0%	162,704	0.1%	97,388	115,122	18.2%	-29.2%	-25.0%
Nov	143,375	145,653	1.6%	144,366	-0.9%	89,387	110,289	23.4%	-24.3%	-23.1%
Dec	136,955	136,110	-0.6%	138,642	1.9%	96,366				
Jan	140,042	146,268	4.4%	149,114	1.9%	97,928				
Feb	139,032	141,396	1.7%	144,392	2.1%	98,285				
Mar	150,384	153,191	1.9%	89,634	-41.5%	112,930				
Apr	148,879	155,808	4.7%	26,877	-82.7%	120,122				
May	152,164	158,665	4.3%	39,654	-75.0%	118,636				
Jun	143,653	141,320	-1.6%	59,093	-58.2%	112,397				
Jul	141,020	148,232	5.1%	61,765	-58.3%	110,059				
Aug	151,750	147,331	-2.9%	66,563	-54.8%	110,766				
Sep	142,360	141,387	-0.7%	80,346	-43.2%	115,406				
Total	1,743,023	1,777,925	2.0%	1,163,150	-34.6%	1,279,670				

ALL-MODES COMBINED TOTAL MONTHLY RIDERSHIP COMPARISONS BY FISCAL YEAR

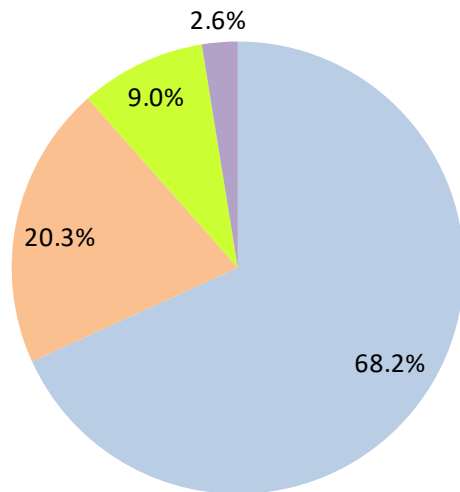
All Modes Month						Variances					
	FY 18	FY 19	FY 20	FY 21	FY 22	18 TO 19	19 TO 20	20 TO 21	21 TO 22	19 TO 22	18 TO 22
Oct	7,322,886	7,265,208	7,144,116	3,922,096	4,429,727	-0.8%	-1.7%	-45.1%	12.9%	-39.0%	-39.5%
Nov	7,005,032	6,783,315	6,610,671	3,672,591	4,436,825	-3.2%	-2.5%	-44.4%	20.8%	-34.6%	-36.7%
Dec	6,783,192	6,538,734	6,549,392	4,139,109		-3.6%	0.2%	-36.8%			
Jan	6,834,741	6,797,602	6,890,225	4,235,761		-0.5%	1.4%	-38.5%			
Feb	6,591,531	6,312,033	6,671,991	4,166,375		-4.2%	5.7%	-37.6%			
Mar	7,244,805	6,712,624	4,694,315	4,993,168		-7.3%	-30.1%	6.4%			
Apr	6,869,802	6,802,085	1,989,545	4,883,356		-1.0%	-70.8%	145.5%			
May	6,742,402	6,755,829	2,258,413	4,982,012		0.2%	-66.6%	120.6%			
Jun	6,318,979	6,026,467	3,082,213	3,794,581		-4.6%	-48.9%	23.1%			
Jul	6,449,526	6,402,110	3,272,074	3,970,972		-0.7%	-48.9%	21.4%			
Aug	6,879,929	6,460,375	3,335,847	4,048,215		-6.1%	-48.4%	21.4%			
Sep	6,412,945	6,240,212	3,501,209	4,120,180		-2.7%	-43.9%	17.7%			
FY Total	81,455,770	79,096,594	56,000,011	50,928,416		-2.9%	-29.2%	-9.1%			

TOTAL MONTHLY AND AVERAGE WEEKDAY RIDERSHIP YEAR OVER YEAR COMPARISON CHARTS – ALL MODES COMBINED



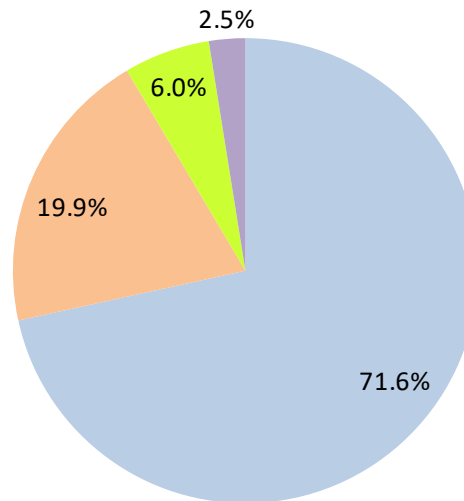
AVERAGE WEEKDAY RIDERSHIP - MODAL SPLITS

November 2021



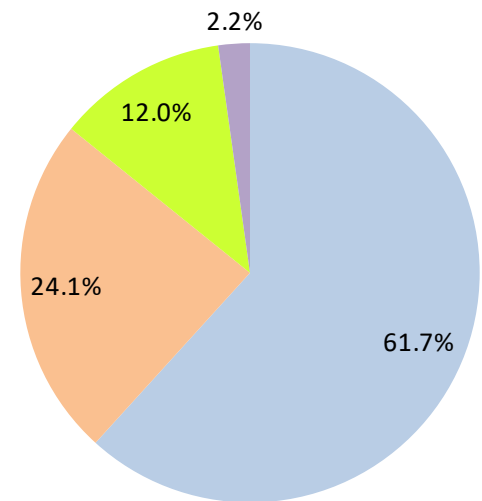
boardings

November 2020



boardings

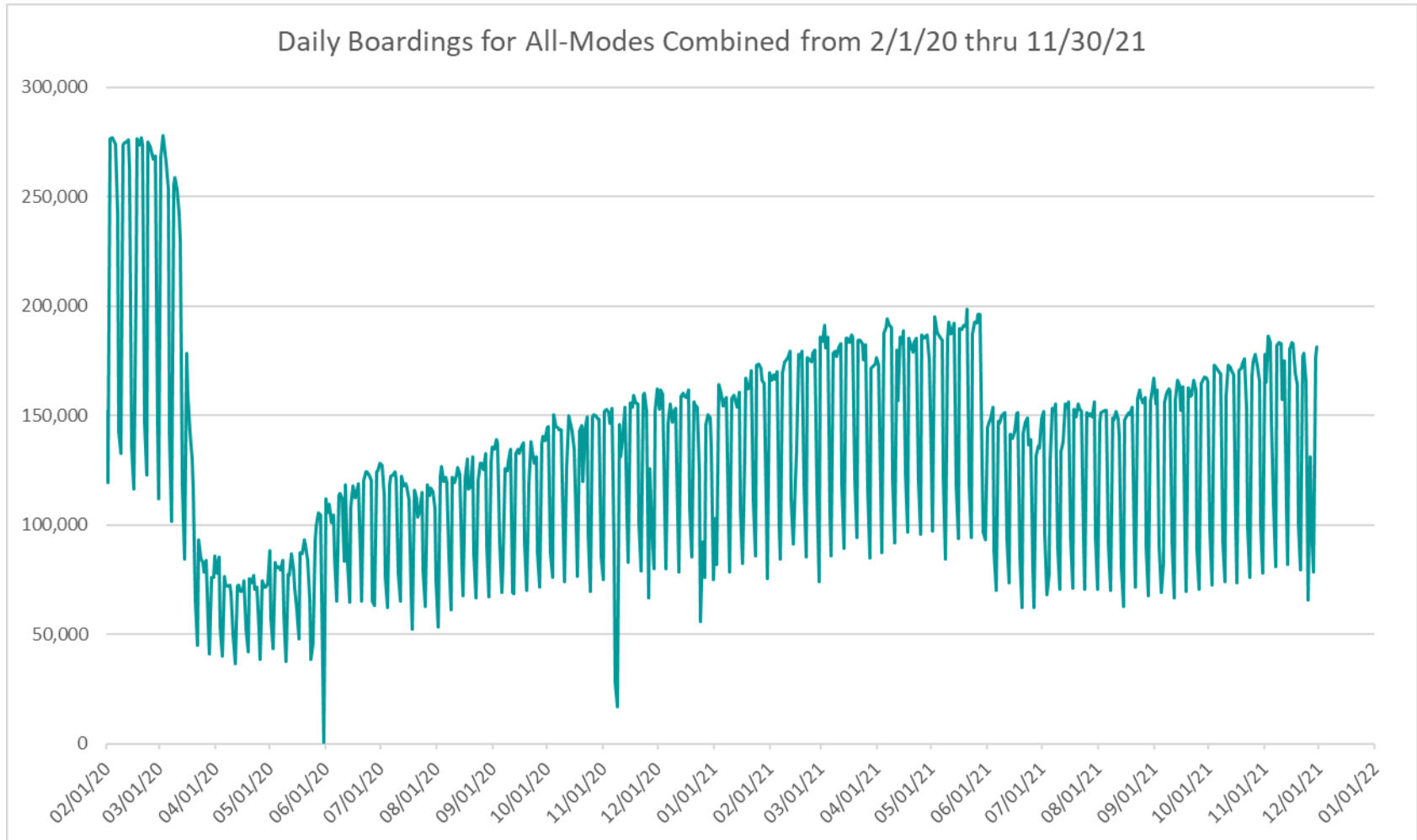
November 2019



boardings



DAILY RIDERSHIP FOR ALL MODES COMBINED SINCE FEBRUARY 1, 2020



- (1) National Emergency was declared on 3/13/20 as a result of the SARS-CoV-2 pandemic.
- (2) There was no Metrobus, Metrorail and Metromover service on 5/31/20, as a safety precaution.
- (3) The dip at the start of the second week of November 2020 is due to Hurricane Eta.
- (4) The reduction seen beginning 6/1/21 is partly due to the resumption of fares for bus and rail, and partly the result of having resumed reporting Cubic farebox data rather than bus APC counts, as well as Cubic rail faregate counts instead of video camera counts on that date.
- (5) Periodic (weekly) variations are prominent, since weekday ridership is almost always significantly higher than weekend or holiday ridership.

Metrobus



METROBUS AVERAGE WEEKDAY BOARDINGS BY ROUTE (†)

Route weekdays	Average Weekday	Average Weekday	Percent Change	Average Weekday	Percent Change	Average Weekday	Percent Change	Average Weekday	Percent Change
	Nov-21	Nov-20	YOY	Feb-20	Current vs Feb-20	Oct-21	MOM	Nov-19	YO2Y
1 (*)	148	162	-8.7%	184	-19.7%	179	-17.6%	303	-51.2%
2	2,211	1,611	37.3%	3,102	-28.7%	2,172	1.8%	2,482	-10.9%
3	4,174	3,754	11.2%	5,137	-18.7%	4,109	1.6%	5,000	-16.5%
7	2,704	1,797	50.5%	3,501	-22.8%	2,536	6.6%	3,239	-16.5%
8	3,677	3,029	21.4%	3,909	-5.9%	3,700	-0.6%	3,714	-1.0%
9	4,743	4,455	6.5%	5,528	-14.2%	4,780	-0.8%	5,455	-13.1%
10	1,522	1,124	35.4%	2,482	-38.7%	1,481	2.8%	2,183	-30.3%
11	6,886	4,881	41.1%	7,292	-5.6%	6,841	0.7%	7,066	-2.6%
12	1,883	2,031	-7.3%	2,779	-32.2%	1,939	-2.9%	2,766	-31.9%
16	1,215	1,098	10.7%	1,862	-34.7%	1,185	2.6%	1,760	-30.9%
17	2,417	2,370	2.0%	3,878	-37.7%	2,432	-0.6%	3,804	-36.5%
19	843	832	1.3%	1,542	-45.4%	966	-12.8%	1,533	-45.0%
21	1,145	1,330	-13.9%	1,817	-37.0%	1,220	-6.2%	1,847	-38.0%
22	2,375	2,162	9.9%	3,640	-34.8%	2,430	-2.3%	3,716	-36.1%
24 - Coral Way Limited	876	1,262	-30.5%	1,340	-34.6%	790	11.0%	1,786	-50.9%
27	4,982	4,619	7.8%	6,972	-28.5%	5,030	-1.0%	6,712	-25.8%
29 (*)	310	317	-2.0%	534	-41.9%	293	6.0%	644	-51.8%
31 - BUSWAY LOCAL	656	438	49.7%	1,089	-39.8%	614	6.9%	1,136	-42.3%
32	1,425	1,460	-2.4%	2,390	-40.4%	1,547	-7.9%	2,383	-40.2%
33	1,114	937	19.0%	1,687	-33.9%	1,063	4.9%	1,733	-35.7%
34 EXPRESS	710	782	-9.1%	2,008	-64.6%	628	13.1%	1,866	-61.9%
35	1,658	1,626	2.0%	2,421	-31.5%	1,623	2.2%	2,574	-35.6%
36	1,836	1,778	3.3%	2,536	-27.6%	1,820	0.9%	2,518	-27.1%
37	2,709	2,343	15.6%	3,273	-17.2%	2,720	-0.4%	3,318	-18.4%
38	4,298	4,018	7.0%	6,361	-32.4%	4,243	1.3%	6,622	-35.1%
39 EXPRESS	192	191	0.5%	893	-78.5%	173	10.8%	890	-78.4%
40	1,203	933	29.0%	1,772	-32.1%	1,249	-3.6%	1,665	-27.7%
42	666	483	37.9%	820	-18.8%	638	4.5%	843	-21.0%
46 - LIBERTY CITY CONN. (*)	19	18	5.8%	41	-54.4%	18	0.5%	35	-46.9%
51 - FLAGLER MAX	2,546	1,801	41.4%	3,109	-18.1%	2,420	5.2%	3,218	-20.9%
52	1,081	730	48.0%	1,261	-14.3%	1,098	-1.6%	1,220	-11.4%
54	2,063	2,071	-0.4%	2,940	-29.8%	2,077	-0.7%	3,009	-31.5%
55 MARLINS SHUTTLE									
56 (*)	244	164	49.0%	354	-31.1%	284	-14.1%	353	-30.9%
57	259	232	11.6%	433	-40.1%	262	-1.0%	412	-37.0%
62	1,267	1,565	-19.0%	1,815	-30.2%	1,225	3.4%	1,936	-34.6%
71 (*)	438	335	30.7%	711	-38.4%	459	-4.7%	698	-37.3%
72 (*)	479	382	25.5%	781	-38.7%	469	2.1%	742	-35.5%

(†) In this table and those which follow, "YOY" stands for "year-over-year", "MOM" for "month-over-month" and "YO2Y" for "year over two years", i.e., current month vs 12 months prior, one month prior, and 24 months prior, respectively.

(*) Contracted routes

(**) Due to effects from the SARS-CoV-2 pandemic; rides were fare-free beginning March 22, 2020; fares were reinstated on June 1, 2021, in part accounting for the drop in ridership from May 2021.

METROBUS AVERAGE WEEKDAY BOARDINGS BY ROUTE

Route weekdays	Average Weekday	Average Weekday	Percent Change	Average Weekday	Percent Change	Average Weekday	Percent Change	Average Weekday	Percent Change
	Nov-21	Nov-20	YOY	Feb-20	Current vs Feb-20	Oct-21	MOM	Nov-19	YO2Y
73	1,696	1,220	39.0%	2,124	-20.2%	1,685	0.6%	2,137	-20.7%
75	877	807	8.7%	1,429	-38.6%	917	-4.3%	1,492	-41.2%
77	5,644	5,172	9.1%	7,129	-20.8%	5,842	-3.4%	7,256	-22.2%
79 STREET MAX	256			361	-29.2%			378	-32.3%
82 - WESTCHESTER CIRC. (*)	22	33	-31.9%	62	-63.9%	37	-39.3%	68	-67.1%
87	1,123	878	27.9%	1,499	-25.1%	1,054	6.6%	1,511	-25.7%
88	2,090	1,418	47.4%	2,076	0.7%	2,012	3.9%	2,043	2.3%
93 - BISCAYNE MAX	1,961	1,427	37.4%	3,334	-41.2%	1,935	1.4%	3,446	-43.1%
95 EXPRESS	378	346	9.3%	1,690	-77.6%	330	14.7%	1,713	-77.9%
99	1,069	870	22.9%	1,473	-27.4%	1,082	-1.2%	1,459	-26.7%
101 - A (*)	124	100	24.4%	177	-29.8%	122	1.9%	158	-21.3%
102 - B	1,348	188	616.7%	1,778	-24.2%	1,365	-1.2%	1,614	-16.5%
103 - C	196	261	-24.8%	463	-57.7%	181	8.4%	426	-54.0%
104	555	315	76.4%	837	-33.7%	646	-14.0%	885	-37.2%
105 - E	921	708	29.9%	1,287	-28.5%	931	-1.1%	1,203	-23.5%
107 - G	1,153	689	67.4%	1,713	-32.7%	1,134	1.7%	1,674	-31.1%
108 - H	326	295	10.3%	473	-31.0%	294	10.6%	477	-31.7%
110 - J	1,985	1,612	23.1%	2,508	-20.9%	1,922	3.3%	2,643	-24.9%
112 - L	6,897	6,498	6.1%	7,636	-9.7%	6,965	-1.0%	7,669	-10.1%
113 - M	410	300	36.9%	866	-52.6%	374	9.7%	852	-51.8%
115 (*)	132	193	-31.6%	180	-26.6%	149	-11.0%	159	-16.9%
119 - S	7,378	6,620	11.5%	8,970	-17.7%	7,120	3.6%	8,978	-17.8%
120 - BEACH MAX	4,423	4,117	7.4%	6,667	-33.7%	4,163	6.3%	6,826	-35.2%
132 TRI-RAIL (DORAL)	7	23	-67.9%	16	-53.5%	13	-42.3%	6	27.2%
135	621	690	-9.9%	1,399	-55.6%	587	5.9%	1,328	-53.2%
136	110	46	136.6%	126	-13.1%	105	4.8%	142	-22.6%
137 - WEST DADE CONN.	1,141	863	32.2%	1,626	-29.8%	1,095	4.2%	1,608	-29.1%
150 - MIAMI BEACH AIRPORT FLYER	1,047	870	20.4%	1,867	-43.9%	839	24.8%	1,890	-44.6%
155 - BISCAYNE GARDENS CIRCULATOR (*)	30	33	-8.5%	44	-32.0%	32	-6.0%	39	-22.7%
175 - NW MIAMI-DADE EXPRESS				33				9	
183	2,022	2,145	-5.7%	3,149	-35.8%	2,025	-0.1%	3,129	-35.4%
195 EXPRESS - BROWARD BLVD				372				367	
196 EXPRESS - SHERIDAN ST				383				362	
200 - CUTLER BAY LOCAL (†)	150	92	63.1%	158	-4.9%	98	53.7%	141	6.2%
202 - LITTLE HAITI CONN. (*)	46	127	-63.6%	140	-67.0%	47	-1.6%	145	-68.2%
204 KILLIAN KAT	251			1,071	-76.6%			970	-74.2%

(††) Due to various communications system and process issues, the NextFare System did not capture a portion of the Cutler Bay Local ridership in November 2021 as well.

METROBUS AVERAGE WEEKDAY BOARDINGS BY ROUTE

Route weekdays	Average Weekday	Average Weekday	Percent Change	Average Weekday	Percent Change	Average Weekday	Percent Change	Average Weekday	Percent Change
	Nov-21	Nov-20	YOY	Feb-20	Current vs Feb-20	Oct-21	MOM	Nov-19	YO2Y
207 (7st) - LITTLE HAVANA CIRC	852	645	32.1%	1,489	-42.8%	763	11.7%	1,508	-43.5%
208 (8st) - LITTLE HAVANA CIRC	801	803	-0.3%	1,308	-38.7%	772	3.7%	1,432	-44.0%
210 - SKYLAKE CIRC (*)	261	187	39.7%	282	-7.3%	266	-1.9%	301	-13.2%
211 - OVERTOWN CIRC. (*)	72	36	103.9%	58	25.0%	83	-12.4%	68	6.5%
212 - SWEETWATER CIRC. (*)	40	15	158.2%	15	170.9%	42	-4.6%	30	33.6%
217 - BUNCHE PARK CIRC (*)	63	59	6.7%	97	-35.2%	69	-8.5%	85	-25.8%
238 EAST/WEST CONN.	371	288	28.9%	449	-17.4%	334	11.2%	513	-27.7%
246 - NIGHT OWL	64	54	17.6%	94	-31.8%	52	22.9%	99	-35.5%
248 - PRINCETON CIRCULATOR (*)	57	81	-29.6%	135	-57.6%	76	-24.5%	115	-50.4%
252 - CORAL REEF MAX	514	369	39.1%	851	-39.6%	499	2.9%	850	-39.6%
254 - BROWNSVILLE CIRC. (*)	6	17	-62.5%	19	-66.5%	13	-52.1%	17	-61.3%
267 - LUDLAM LIMITED (*)	84	87	-3.0%	149	-43.4%	110	-23.1%	135	-37.5%
272 SUNSET KAT (*)	316	195	62.7%	550	-42.5%	320	-1.2%	520	-39.1%
277 - 7th AVENUE MAX	383	435	-12.0%	683	-43.9%	385	-0.4%	647	-40.8%
286 - NORTH POINTE CIRC. (*)	34	35	-2.5%	97	-64.7%	36	-4.9%	109	-68.5%
287 - SAGA BAY MAX	173	104	65.4%	358	-51.8%	176	-2.1%	337	-48.8%
288 - KENDALL CRUISER	213			762	-72.1%			793	-73.2%
295 EXPRESS - BROWARD BLVD - CIVIC CENTER				233				220	
296 EXPRESS - SHERIDAN ST - CIVIC CENTER				215				195	
297-27th AVENUE ORANGE MAX	688	698	-1.4%	1,356	-49.3%	653	5.4%	1,325	-48.1%
301 DADE-MONROE EXPRESS(*)	809	752	7.5%	841	-3.9%	998	-18.9%	823	-1.7%
302 CARD SOUND EXPRESS(*)	67	61	8.8%	86	-22.5%	71	-6.0%	78	-14.6%
344 (*)	57	68	-16.2%	96	-40.5%	61	-5.9%	104	-45.3%
500		33		81				36	
836 EXPRESS	142					122	16.2%		
GREEN HILLS SHUTTLE (*)	5	7	-36.6%	9	-48.9%	5	-12.4%	5	-12.4%
KINGS CREEK SHUTTLE (*)	9	9	3.8%	13	-30.8%	7	24.1%	11	-18.2%
SIERRALAKES SHUTTLE (*)	19	20	-7.5%	45	-58.9%	34	-45.9%	24	-21.6%
ROBERT SHARP SHUTTLE (*)	23	18	27.8%	10	142.1%	21	9.5%	6	283.3%
AHEPA SHUTTLE (*)	37	14	164.3%	21	78.3%	18	105.6%	19	98.2%
Total	119,526	103,163	15.9%	167,711	-28.7%	117,796	1.5%	166,784	-28.3%

(*) The following routes are entirely operated under contract: 1, 29, 46, 56, 71, 72, 82, 101-A, 115, 155, 202, 210, 211, 212, 217, 246, 248, 254, 267, 272, 286, 301, 302 and 344, although some supplemental runs may be performed by DTPW. Conversely, a few routes that are nominally run by DTPW may have a few supplemental runs operated by contractors; Dade-Monroe routes 301 and 302 as well as six Lifeline routes are also under contracted operation.

(1) Includes shuttles and those routes which were not run both years.

(2) Several express routes were suspended beginning at the end of March 2020, due to the SARS-CoV-2 pandemic, while other routes had alignment and schedule modifications made to them, in an ongoing effort to optimize service delivery.

METROBUS AVERAGE SATURDAY BOARDINGS BY ROUTE

Route	Average Saturday	Average Saturday	Percent Change	Average Saturday	Percent Change	Average Saturday	Percent Change	Average Saturday	Percent Change
Saturdays	Nov-21	Nov-20	YOY	Feb-20	Current vs Feb-20	Oct-21	MOM	Nov-19	YO2Y
1 (*)	162	196	-17.2%	215	-24.5%	150	8.5%	254	-36.1%
2	1,124	825	36.4%	1,616	-30.4%	1,301	-13.6%	1,549	-27.4%
3	3,931	3,685	6.7%	5,229	-24.8%	3,694	6.4%	5,534	-29.0%
7	1,630	1,366	19.3%	1,887	-13.7%	1,685	-3.3%	1,953	-16.6%
8	1,976	1,927	2.5%	2,027	-2.5%	1,809	9.2%	2,180	-9.3%
9	2,772	2,661	4.2%	3,034	-8.6%	2,421	14.5%	3,359	-17.5%
10	1,490	1,424	4.6%	1,896	-21.4%	1,576	-5.4%	1,876	-20.6%
11	4,664	4,108	13.5%	5,182	-10.0%	4,518	3.2%	5,667	-17.7%
16	1,158	1,293	-10.5%	1,566	-26.1%	1,262	-8.2%	1,578	-26.6%
17	1,699	1,529	11.1%	2,363	-28.1%	1,575	7.9%	2,613	-35.0%
22	1,537	1,620	-5.1%	2,084	-26.2%	1,459	5.3%	2,126	-27.7%
24 - Coral Way Limited	817	893	-8.4%	1,165	-29.9%	458	78.4%	1,289	-36.6%
27	2,903	3,083	-5.9%	4,034	-28.0%	2,884	0.6%	4,433	-34.5%
31 - BUSWAY LOCAL	617	813	-24.2%	896	-31.2%	640	-3.7%	908	-32.1%
32	746	793	-5.8%	1,029	-27.5%	676	10.4%	1,151	-35.2%
33	686	599	14.6%	951	-27.8%	668	2.7%	1,079	-36.4%
35	979	1,095	-10.6%	1,372	-28.7%	1,043	-6.2%	1,123	-12.9%
36	1,122	1,362	-17.6%	1,289	-13.0%	940	19.3%	1,368	-18.0%
37	1,504	1,650	-8.9%	2,090	-28.1%	1,464	2.7%	2,293	-34.4%
38	3,286	2,623	25.3%	4,715	-30.3%	3,290	-0.1%	4,977	-34.0%
40	535	482	10.9%	655	-18.3%	466	14.7%	710	-24.6%
42	388	460	-15.6%	552	-29.6%	411	-5.6%	601	-35.4%
52	607	513	18.3%	686	-11.5%	561	8.1%	700	-13.3%
54	1,337	1,790	-25.3%	1,727	-22.6%	1,316	1.6%	1,938	-31.0%
55 MARLINS SHUTTLE									
62	924	1,280	-27.8%	1,343	-31.2%	833	10.9%	1,343	-31.3%
71 (*)	156	146	6.7%	252	-38.0%	145	7.7%	329	-52.6%
72 (*)	371	225	64.5%	350	6.0%	326	13.8%	377	-1.8%
73	870	731	19.0%	860	1.1%	769	13.2%	1,033	-15.7%
75	301	422	-28.7%	468	-35.6%	320	-5.7%	472	-36.1%
77	3,551	2,865	24.0%	4,197	-15.4%	3,386	4.9%	4,373	-18.8%
87	404	435	-7.2%	402	0.3%	350	15.2%	541	-25.4%
88	1,457	1,051	38.6%	1,620	-10.1%	1,416	2.9%	1,802	-19.1%
99	713	702	1.6%	849	-16.0%	627	13.8%	907	-21.4%

METROBUS AVERAGE SATURDAY BOARDINGS BY ROUTE

Route	Average Saturday	Average Saturday	Percent Change	Average Saturday	Percent Change	Average Saturday	Percent Change	Average Saturday	Percent Change
Saturdays	Nov-21	Nov-20	YOY	Feb-20	Current vs Feb-20	Oct-21	MOM	Nov-19	YO2Y
101 - A (*)	63	59	6.8%	71	-11.4%	56	12.5%	70	-10.4%
102 - B	717	204	252.0%	851	-15.7%	550	30.4%	813	-11.8%
103 - C	124	278	-55.4%	315	-60.7%	135	-8.3%	297	-58.3%
104	280	113	148.0%	468	-40.2%	318	-11.8%	482	-41.9%
105 - E	521	480	8.5%	619	-15.8%	537	-3.0%	667	-21.9%
107 - G	843	642	31.3%	1,066	-20.9%	826	2.1%	1,136	-25.7%
108 - H	286	296	-3.2%	372	-23.1%	240	19.4%	411	-30.4%
110 - J	1,399	1,404	-0.4%	1,952	-28.3%	1,306	7.2%	1,892	-26.1%
112 - L	4,762	5,572	-14.5%	5,667	-16.0%	4,309	10.5%	6,234	-23.6%
113 - M	351	412	-15.0%	503	-30.3%	252	39.0%	458	-23.5%
115 (*)	98	123	-19.8%	82	19.5%	93	5.4%	96	2.3%
119 - S	5,606	5,955	-5.9%	6,861	-18.3%	5,037	11.3%	7,553	-25.8%
120 - BEACH MAX	3,795	3,535	7.4%	4,744	-20.0%	3,218	17.9%	5,200	-27.0%
135	223	335	-33.4%	539	-58.6%	219	1.6%	552	-59.6%
137 - WEST DADE CONN.	888	733	21.3%	1,027	-13.5%	816	8.9%	1,148	-22.6%
150 - MIAMI BEACH AIRPORT FLYER	1,108	918	20.7%	1,604	-30.9%	825	34.2%	1,753	-36.8%
183	1,366	997	37.1%	1,790	-23.7%	1,317	3.7%	1,968	-30.6%
200 - CUTLER BAY LOCAL	62	84	-26.6%	119	-48.4%	33	88.3%	122	-49.4%
202 - LITTLE HAITI CONN. (*)	57	90	-36.0%	50	14.0%	65	-12.2%	64	-10.5%
207 (7st) - LITTLE HAVANA CIRC	692	730	-5.3%	1,032	-33.0%	650	6.5%	1,057	-34.6%
208 (8st) - LITTLE HAVANA CIRC	663	853	-22.3%	1,044	-36.5%	783	-15.4%	1,001	-33.8%
210 - SKYLAKE CIRC (*)	177	139	27.1%	165	7.3%	129	37.4%	167	5.9%
246 - NIGHT OWL	54	54	0.0%	84	-36.6%	58	-7.2%	93	-42.7%
252 - CORAL REEF MAX	180	183	-1.8%	302	-40.6%	205	-12.3%	316	-43.1%
286 - NORTH POINTE CIRC. (*)	42	27	57.5%	41	2.3%	34	24.3%	63	-33.7%
301 DADE-MONROE EXPRESS(*)	810	833	-2.8%	801	1.1%	1,103	-26.6%	843	-3.9%
302 CARD SOUND EXPRESS(*)	44	44	-1.7%	57	-23.1%	49	-10.5%	53	-18.2%
338 - WEEKEND EXPRESS	219	96	127.9%	237	-7.5%	145	51.3%	261	-16.2%
500		41		70				46	
12/21 WEEKEND INTERL.	1,830	1,771	3.3%	2,528	-27.6%	1,714	6.8%	2,719	-32.7%
FEDERATION GARDENS SHUTTLE (*)	22	18	22.9%	28	-24.3%	20	8.6%	18	16.8%
Total	73,705	71,680	2.8%	93,742	-21.4%	69,520	6.0%	100,051	-26.3%

METROBUS AVERAGE SUNDAY BOARDINGS BY ROUTE

Route	Average Sunday	Average Sunday	Percent Change	Average Sunday	Percent Change	Average Sunday	Percent Change	Average Sunday	Percent Change
Sundays	Nov-21	Nov-20	YOY	Feb-20	Current vs Feb-20	Oct-21	MOM	Nov-19	YO2Y
1 (*)	126	129	-1.6%	201	-37.0%	131	-3.4%	199	-36.4%
2	936	682	37.2%	1,335	-29.9%	887	5.5%	1,024	-8.6%
3	3,140	2,460	27.7%	4,353	-27.9%	3,181	-1.3%	4,174	-24.8%
7	1,148	905	26.9%	1,654	-30.6%	963	19.2%	1,453	-21.0%
8	1,301	1,427	-8.8%	1,746	-25.5%	1,457	-10.7%	1,692	-23.1%
9	1,700	2,362	-28.0%	2,549	-33.3%	2,040	-16.7%	2,433	-30.1%
10	1,169	1,066	9.7%	1,441	-18.9%	1,179	-0.9%	1,232	-5.1%
11	3,234	2,442	32.5%	3,917	-17.4%	3,254	-0.6%	3,730	-13.3%
16	626	614	2.0%	997	-37.2%	616	1.7%	838	-25.3%
17	1,277	1,253	1.9%	1,833	-30.4%	1,154	10.6%	1,678	-23.9%
22	1,081	1,147	-5.7%	1,548	-30.2%	1,127	-4.1%	1,540	-29.8%
24 - Coral Way Limited	668	666	0.2%	905	-26.2%	547	22.0%	950	-29.7%
27	1,977	2,095	-5.6%	2,918	-32.2%	1,921	2.9%	2,937	-32.7%
31 - BUSWAY LOCAL	469	464	1.2%	715	-34.3%	484	-3.0%	607	-22.7%
32	412	439	-6.1%	772	-46.7%	457	-9.9%	764	-46.2%
33	388	372	4.4%	607	-36.0%	379	2.5%	620	-37.3%
35	762	730	4.4%	942	-19.1%	816	-6.6%	942	-19.1%
36	873	1,017	-14.2%	1,111	-21.4%	828	5.4%	1,030	-15.2%
37	1,291	1,101	17.2%	1,739	-25.8%	1,180	9.4%	1,673	-22.8%
38	2,611	2,070	26.1%	4,147	-37.0%	2,705	-3.5%	3,935	-33.6%
40	341	299	14.2%	447	-23.8%	320	6.6%	487	-30.0%
42	290	282	2.8%	416	-30.2%	269	8.0%	345	-15.8%
52	371	401	-7.4%	466	-20.3%	360	3.2%	441	-15.7%
54	796	969	-17.8%	1,171	-32.0%	860	-7.5%	1,139	-30.1%
55 MARLINS SHUTTLE									
62	573	723	-20.7%	891	-35.7%	552	3.8%	868	-34.0%
71 (*)	115	110	4.4%	162	-28.9%	103	11.8%	157	-26.5%
72 (*)	247	177	39.5%	265	-6.5%	256	-3.3%	282	-12.4%
73	417	352	18.5%	495	-15.8%	424	-1.8%	480	-13.3%
75	204	216	-5.2%	271	-24.5%	235	-12.9%	248	-17.6%
77	2,231	2,493	-10.5%	2,815	-20.7%	2,461	-9.4%	2,886	-22.7%
87	212	172	23.3%	319	-33.5%	236	-10.1%	287	-26.1%
88	937	604	55.1%	1,286	-27.1%	955	-1.8%	1,223	-23.4%
99	498	489	1.9%	658	-24.3%	516	-3.5%	626	-20.5%

METROBUS AVERAGE SUNDAY BOARDINGS BY ROUTE

Route Sundays	Average Sunday	Average Sunday	Percent Change	Average Sunday	Percent Change	Average Sunday	Percent Change	Average Sunday	Percent Change
	Nov-21	Nov-20	YOY	Feb-20	Current vs Feb-20	Oct-21	MOM	Nov-19	YO2Y
101 - A (*)	44	33	35.2%	56	-20.0%	39	15.0%	49	-9.0%
102 - B	521	185	180.9%	717	-27.3%	484	7.6%	745	-30.2%
103 - C	91	138	-34.3%	212	-57.2%	103	-11.9%	199	-54.5%
104	180	114	57.3%	317	-43.3%	194	-7.5%	297	-39.5%
105 - E	461	471	-2.2%	616	-25.2%	498	-7.5%	567	-18.8%
107 - G	629	585	7.5%	895	-29.7%	573	9.9%	819	-23.1%
108 - H	264	222	18.7%	328	-19.6%	214	23.2%	334	-20.9%
110 - J	1,153	869	32.7%	1,638	-29.6%	1,083	6.5%	1,513	-23.8%
112 - L	3,342	3,417	-2.2%	4,804	-30.4%	2,986	11.9%	4,548	-26.5%
113 - M	229	230	-0.7%	431	-46.9%	280	-18.4%	358	-36.1%
115 (*)	81	90	-10.1%	80	0.7%	98	-18.1%	88	-8.2%
119 - S	5,313	5,110	4.0%	7,141	-25.6%	5,119	3.8%	7,080	-24.9%
120 - BEACH MAX	2,266	1,991	13.8%	3,469	-34.7%	2,074	9.2%	3,465	-34.6%
135	128	227	-43.5%	349	-63.4%	60	114.0%	363	-64.8%
137 - WEST DADE CONN.	613	502	22.1%	879	-30.3%	609	0.7%	800	-23.4%
150 - MIAMI BEACH AIRPORT FLYER	949	901	5.3%	1,574	-39.7%	692	37.1%	1,593	-40.4%
183	1,007	974	3.4%	1,413	-28.7%	1,007	0.0%	1,293	-22.1%
200 - CUTLER BAY LOCAL	18	32	-44.7%	59	-70.1%	4	400.0%	42	-58.3%
202 - LITTLE HAITI CONN. (*)	66	75	-12.1%	39	68.7%	63	4.1%	70	-6.3%
207 (7st) - LITTLE HAVANA CIRC	491	579	-15.2%	796	-38.3%	389	26.5%	726	-32.3%
208 (8st) - LITTLE HAVANA CIRC	561	533	5.1%	911	-38.5%	385	45.7%	969	-42.1%
210 - SKYLAKE CIRC (*)	141	122	16.1%	143	-1.3%	102	39.0%	138	2.6%
246 - NIGHT OWL	58	44	33.3%	87	-33.1%	30	96.6%	93	-37.7%
252 - CORAL REEF MAX	159	152	4.1%	199	-20.2%	150	5.6%	247	-35.8%
301 DADE-MONROE EXPRESS(*)	683	663	2.9%	751	-9.1%	973	-29.8%	755	-9.5%
302 CARD SOUND EXPRESS(*)	48	44	9.9%	57	-15.8%	52	-8.0%	70	-31.2%
338 - WEEKEND EXPRESS	164	87	89.1%	252	-35.1%	135	21.4%	274	-40.2%
500		36		83				45	
12/21 WEEKEND INTERL.	1,418	1,329	6.7%	2,048	-30.8%	1,333	6.4%	2,027	-30.0%
Total	53,582	50,480	6.1%	75,428	-29.0%	52,688	1.7%	72,484	-26.1%

METROBUS TOTAL MONTHLY BOARDINGS BY ROUTE

Route	Total Month	Total Month	Percent Change	Total Month	Percent Change	Total Month	Percent Change	Total Month	Percent Change
Monthly Total	Nov-21	Nov-20	YOY	Feb-20	Current vs Feb-20	Oct-21	MOM	Nov-19	YO2Y
1 (*)	4,385	4,792	-8.5%	5,558	-21.1%	5,170	-15.2%	8,321	-47.3%
2	55,613	39,606	40.4%	75,463	-26.3%	56,563	-1.7%	62,506	-11.0%
3	119,085	104,573	13.9%	146,294	-18.6%	120,662	-1.3%	148,547	-19.8%
7	69,049	46,823	47.5%	86,077	-19.8%	66,495	3.8%	81,808	-15.6%
8	91,627	76,842	19.2%	95,295	-3.8%	94,039	-2.6%	93,650	-2.2%
9	119,184	113,908	4.6%	135,924	-12.3%	122,685	-2.9%	138,066	-13.7%
10	43,770	34,571	26.6%	64,874	-32.5%	44,878	-2.5%	59,198	-26.1%
11	179,430	128,703	39.4%	187,425	-4.3%	182,518	-1.7%	188,314	-4.7%
12	39,551	40,627	-2.6%	55,585	-28.8%	40,722	-2.9%	55,318	-28.5%
16	33,286	30,824	8.0%	49,061	-32.2%	34,274	-2.9%	47,282	-29.6%
17	63,933	61,033	4.8%	96,715	-33.9%	64,711	-1.2%	97,525	-34.4%
19	17,695	16,641	6.3%	30,847	-42.6%	20,284	-12.8%	30,660	-42.3%
21	24,041	26,598	-9.6%	36,341	-33.8%	25,628	-6.2%	36,937	-34.9%
22	61,420	56,587	8.5%	89,404	-31.3%	63,968	-4.0%	92,639	-33.7%
24 - Coral WayLimited	25,013	32,800	-23.7%	36,237	-31.0%	21,615	15.7%	46,915	-46.7%
27	126,110	117,285	7.5%	171,282	-26.4%	129,664	-2.7%	171,096	-26.3%
29 (*)	6,520	6,339	2.9%	10,684	-39.0%	6,151	6.0%	12,870	-49.3%
31 - BUSWAYLOCAL	18,591	14,801	25.6%	29,125	-36.2%	18,513	0.4%	30,304	-38.7%
32	34,967	35,006	-0.1%	56,027	-37.6%	38,147	-8.3%	57,236	-38.9%
33	28,086	23,360	20.2%	40,918	-31.4%	27,549	1.9%	43,150	-34.9%
34 EXPRESS	14,917	15,631	-4.6%	40,159	-62.9%	13,185	13.1%	37,324	-60.0%
35	42,549	41,278	3.1%	59,041	-27.9%	43,387	-1.9%	61,808	-31.2%
36	47,416	47,119	0.6%	61,606	-23.0%	47,067	0.7%	62,344	-23.9%
37	69,354	60,059	15.5%	82,870	-16.3%	70,337	-1.4%	86,189	-19.5%
38	116,449	103,275	12.8%	167,379	-30.4%	119,073	-2.2%	176,989	-34.2%
39 EXPRESS	4,036	3,825	5.5%	17,853	-77.4%	3,643	10.8%	17,801	-77.3%
40	29,115	22,379	30.1%	40,497	-28.1%	30,156	-3.5%	39,285	-25.9%
42	16,992	13,195	28.8%	20,825	-18.4%	16,788	1.2%	21,597	-21.3%
46 - LIBERTYCITYCONN. (*)	390	351	11.1%	814	-52.1%	388	0.5%	700	-44.3%
51 - FLAGLER MAX	53,475	36,013	48.5%	62,186	-14.0%	50,823	5.2%	64,366	-16.9%
52	26,977	19,059	41.5%	30,522	-11.6%	27,658	-2.5%	30,091	-10.3%
54	52,646	54,388	-3.2%	72,125	-27.0%	54,495	-3.4%	75,573	-30.3%
55 MARLINS SHUTTLE									
56 (*)	5,117	3,270	56.5%	7,071	-27.6%	5,956	-14.1%	7,053	-27.4%
57	5,448	4,649	17.2%	8,665	-37.1%	5,504	-1.0%	8,239	-33.9%
62	33,158	40,746	-18.6%	46,582	-28.8%	32,640	1.6%	49,768	-33.4%
71 (*)	10,389	7,945	30.8%	16,118	-35.5%	10,884	-4.5%	16,393	-36.6%
72 (*)	12,773	9,596	33.1%	18,433	-30.7%	12,758	0.1%	18,136	-29.6%

METROBUS TOTAL MONTHLY BOARDINGS BY ROUTE

Route	Total Month	Total Month	Percent Change	Total Month	Percent Change	Total Month	Percent Change	Total Month	Percent Change
Monthly Total	Nov-21	Nov-20	YOY	Feb-20	Current vs Feb-20	Oct-21	MOM	Nov-19	YO2Y
73	41,172	29,433	39.9%	48,767	-15.6%	41,346	-0.4%	50,303	-18.2%
75	20,651	19,123	8.0%	31,994	-35.5%	22,026	-6.2%	33,431	-38.2%
77	143,889	129,850	10.8%	174,833	-17.7%	151,912	-5.3%	181,409	-20.7%
79 STREET MAX	512			7,228	-92.9%			7,567	-93.2%
82 - WESTCHESTER CIRC. (*)	517	702	-26.4%	1,482	-65.1%	981	-47.3%	1,655	-68.8%
87	26,259	20,338	29.1%	33,273	-21.1%	25,061	4.8%	34,368	-23.6%
88	54,408	36,189	50.3%	54,772	-0.7%	54,104	0.6%	55,978	-2.8%
93 - BISCAYNE MAX	41,182	28,541	44.3%	66,684	-38.2%	40,633	1.4%	68,910	-40.2%
95 EXPRESS	7,938	6,915	14.8%	33,796	-76.5%	6,922	14.7%	34,266	-76.8%
99	27,787	23,136	20.1%	36,325	-23.5%	28,429	-2.3%	36,841	-24.6%
101 - A (*)	3,082	2,329	32.3%	4,114	-25.1%	3,032	1.6%	3,753	-17.9%
102 - B	33,784	5,689	493.8%	42,683	-20.8%	33,825	-0.1%	40,079	-15.7%
103 - C	5,061	7,148	-29.2%	11,682	-56.7%	4,984	1.5%	10,991	-54.0%
104	13,677	7,431	84.1%	20,351	-32.8%	16,117	-15.1%	21,587	-36.6%
105 - E	23,719	18,916	25.4%	31,302	-24.2%	24,721	-4.1%	30,235	-21.6%
107 - G	30,738	19,859	54.8%	43,178	-28.8%	30,806	-0.2%	43,252	-28.9%
108 - H	9,307	8,424	10.5%	12,624	-26.3%	8,454	10.1%	13,272	-29.9%
110 - J	53,054	43,074	23.2%	66,481	-20.2%	52,312	1.4%	69,886	-24.1%
112 - L	180,602	172,750	4.5%	200,268	-9.8%	182,752	-1.2%	207,288	-12.9%
113 - M	11,162	9,026	23.7%	21,548	-48.2%	10,515	6.2%	21,112	-47.1%
115 (*)	3,574	4,895	-27.0%	4,334	-17.5%	4,078	-12.4%	4,102	-12.9%
119 - S	203,920	186,875	9.1%	242,257	-15.8%	200,290	1.8%	252,731	-19.3%
120 - BEACH MAX	119,400	108,429	10.1%	170,942	-30.2%	113,881	4.8%	179,834	-33.6%
132 TRI-RAIL (DORAL)	58	452	-87.2%	312	-81.4%	113	-48.7%	114	-49.1%
135 (*)	14,320	16,492	-13.2%	32,067	-55.3%	13,494	6.1%	31,143	-54.0%
136	2,303	927	148.4%	2,524	-8.8%	2,198	4.8%	2,835	-18.8%
137 - WEST DADE CONN.	30,572	23,203	31.8%	41,167	-25.7%	30,118	1.5%	41,900	-27.0%
150 - MIAMI BEACH AIRPORT FLYER	31,162	26,477	17.7%	51,651	-39.7%	25,201	23.7%	54,524	-42.8%
155 - BISCAYNE GARDENS CIRCULATOR (*)	629	622	1.1%	881	-28.6%	669	-6.0%	775	-18.8%
175 - NW MIAMI-DADE EXPRESS				661				80	
183	52,970	52,737	0.4%	77,570	-31.7%	54,140	-2.2%	78,888	-32.9%
195 EXPRESS - BROWARD BLVD				7,441				7,339	
196 EXPRESS - SHERIDAN ST				7,658				7,235	
200 - CUTLER BAY LOCAL	3,309	2,365	39.9%	3,984	-16.9%	1,179	180.7%	3,645	-9.2%
202 - LITTLE HAITI CONN. (*)	1,526	3,213	-52.5%	3,200	-52.3%	1,626	-6.2%	3,571	-57.3%
204 KILLIAN KAT	501			21,418	-97.7%			19,404	-97.4%

METROBUS TOTAL MONTHLY BOARDINGS BY ROUTE

Route	Total Month	Total Month	Percent Change	Total Month	Percent Change	Total Month	Percent Change	Total Month	Percent Change
Monthly Total	Nov-21	Nov-20	YOY	Feb-20	Current vs Feb-20	Oct-21	MOM	Nov-19	YO2Y
207 (7st) - LITTLE HAVANA CIRC	23,124	19,298	19.8%	38,127	-39.4%	21,222	9.0%	39,082	-40.8%
208 (8st) - LITTLE HAVANA CIRC	22,282	22,679	-1.8%	35,018	-36.4%	22,060	1.0%	38,482	-42.1%
210 - SKYLAKE CIRC (*)	6,898	5,026	37.2%	7,033	-1.9%	6,745	2.3%	7,543	-8.6%
211 - OVERTOWN CIRC. (*)	1,521	675	125.3%	1,159	31.2%	1,737	-12.4%	1,360	11.8%
212 - SWEETWATER CIRC. (*)	839	294	185.4%	295	184.4%	879	-4.6%	598	40.3%
217 - BUNCHE PARK CIRC (*)	1,326	1,124	18.0%	1,949	-32.0%	1,449	-8.5%	1,701	-22.0%
238 EAST/WEST CONN.	7,793	5,756	35.4%	8,987	-13.3%	7,008	11.2%	10,261	-24.1%
246 - NIGHT OWL	1,845	1,561	18.2%	2,641	-30.1%	1,100	67.7%	2,912	-36.6%
248 - PRINCETON CIRCULATOR (*)	1,197	1,620	-26.1%	2,690	-55.5%	1,586	-24.5%	2,298	-47.9%
252 - CORAL REEF MAX	12,299	9,030	36.2%	19,325	-36.4%	12,253	0.4%	19,814	-37.9%
254 - BROWNSVILLE CIRC. (*)	135	326	-58.6%	384	-64.8%	282	-52.1%	332	-59.3%
267 - LUDLAM LIMITED (*)	1,770	1,738	1.8%	2,978	-40.6%	2,303	-23.1%	2,696	-34.3%
272 SUNSET KAT (*)	6,644	3,890	70.8%	11,004	-39.6%	6,725	-1.2%	10,397	-36.1%
277 - 7th AVENUE MAX	8,046	8,705	-7.6%	13,669	-41.1%	8,078	-0.4%	12,937	-37.8%
286 - NORTH POINTE CIRC. (*)	887	774	14.6%	2,145	-58.6%	925	-4.1%	2,490	-64.4%
287 - SAGA BAY MAX	3,624	2,087	73.6%	7,160	-49.4%	3,703	-2.1%	6,736	-46.2%
288 - KENDALL CRUISER	425			15,249	-97.2%			15,855	-97.3%
295 EXPRESS - BROWARD BLVD - CIVIC CENTER				4,668				4,395	
296 EXPRESS - SHERIDAN ST - CIVIC CENTER				4,297				3,899	
297-27th AVENUE ORANGE MAX	14,618	13,954	4.8%	27,125	-46.1%	13,927	5.0%	26,500	-44.8%
301 DADE-MONROE EXPRESS(*)	23,638	22,357	5.7%	23,838	-0.8%	31,331	-24.6%	24,452	-3.3%
302 CARD SOUND EXPRESS(*)	1,818	1,668	9.0%	2,236	-18.7%	1,998	-9.0%	2,180	-16.6%
338 - WEEKEND EXPRESS	1,693	903	87.5%	2,191	-22.7%	1,397	21.2%	2,674	-36.7%
344 (*)	1,198	1,362	-12.0%	1,919	-37.6%	1,273	-5.9%	2,087	-42.6%
500		1,028		2,301				1,168	-100.0%
836 EXPRESS	2,983					2,568	16.2%		
12/21 WEEKEND INTERL.	14,408	15,059	-4.3%	20,830	-30.8%	15,235	-5.4%	23,731	-39.3%
GREEN HILLS SHUTTLE (*)	23	29	-20.7%	36	-36.1%	21	9.5%	21	9.5%
KINGS CREEK SHUTTLE (*)	27	26	3.8%	52	-48.1%	29	-6.9%	33	-18.2%
SIERRALAKES SHUTTLE (*)	74	80	-7.5%	180	-58.9%	171	-56.7%	118	-37.3%
ROBERT SHARP SHUTTLE (*)	92	72	27.8%	38	142.1%	84	9.5%	24	283.3%
AHEPA SHUTTLE (*)	111	42	164.3%	83	33.7%	72	54.2%	56	98.2%
FEDERATION GARDENSSHUTTLE (*)	86	70	22.9%	142	-39.4%	99	-13.1%	92	-6.5%
Total	3,056,726	2,651,290	15.3%	4,123,083	-25.9%	3,081,157	-0.8%	4,197,225	-27.2%

METROBUS HOLIDAY BOARDINGS BY ROUTE

Veterans Day

ROUTES	Veterans Day 2020	Veterans Day 2021	Pct Delta	ROUTES	Veterans Day 2020	Veterans Day 2021	Pct Delta	ROUTES	Veterans Day 2020	Veterans Day 2021	Pct Delta
1	189	175	-7.4%	57	245	201	-18.0%	175			
2	1,419	2,037	43.6%	62	1,269	1,113	-12.3%	183	2,219	1,678	-24.4%
3	3,737	4,440	18.8%	71	306	386	26.1%	195			
7	1,609	2,165	34.6%	72	403	452	12.2%	196			
8	2,857	3,456	21.0%	73	1,002	1,623	62.0%	200	82	150	82.9%
9	3,471	4,321	24.5%	75	584	703	20.4%	202	166	34	-79.5%
10	957	1,387	44.9%	77	4,819	5,177	7.4%	204			
11	4,560	6,726	47.5%	79				207	368	692	88.0%
12	2,537	1,712	-32.5%	82	26	13	-50.0%	208	1,057	715	-32.4%
16	844	1,079	27.8%	87	891	1,178	32.2%	210	155	290	87.1%
17	2,642	1,861	-29.6%	88	1,226	2,123	73.2%	211	40	93	132.5%
19	960	681	-29.1%	93	1,037	1,927	85.8%	212	10	42	320.0%
21	628	1,076	71.3%	95	258	217	-15.9%	217	53	78	47.2%
22	1,729	1,835	6.1%	99	504	1,073	112.9%	238	240	341	42.1%
24	1,340	795	-40.7%	101	96	109	13.5%	246	47	76	61.7%
27	4,196	4,585	9.3%	102	146	1,290	783.6%	248	70	61	-12.9%
29	388	307	-20.9%	103	333	211	-36.6%	252	363	518	42.7%
31	210	561	167.1%	104	191	416	117.8%	254	10	6	-40.0%
32	928	1,282	38.1%	105	537	971	80.8%	267	65	95	46.2%
33	779	903	15.9%	107	523	1,122	114.5%	272	185	328	77.3%
34	728	611	-16.1%	108	455	331	-27.3%	277	225	240	6.7%
35	1,570	1,460	-7.0%	110	1,151	2,039	77.2%	286	49	37	-24.5%
36	1,124	1,622	44.3%	112	5,340	6,717	25.8%	287	97	152	56.7%
37	1,983	2,711	36.7%	113	358	268	-25.1%	288			
38	3,616	4,081	12.9%	115	108	124	14.8%	295			
39	170	159	-6.5%	119	5,538	7,806	41.0%	296			
40	777	1,118	43.9%	120	3,636	3,767	3.6%	297	786	757	-3.7%
42	542	578	6.6%	132	30			301	726	809	11.4%
46	11	13	18.2%	135	719	745	3.6%	302	56	44	-21.4%
51	1,947	2,366	21.5%	136	77	99	28.6%	344	69	48	-30.4%
52	563	1,003	78.2%	137	723	1,169	61.7%	500	28		
54	2,082	1,960	-5.9%	150	784	1,042	32.9%	836		147	
56	196	214	9.2%	155	22	28	27.3%	Total (1)	91,792	111,151	21.1%

(1) Excludes Lifeline shuttles.

METROBUS HOLIDAY BOARDINGS BY ROUTE

Thanksgiving Day

ROUTES	Thanksgiving Day 2020	Thanksgiving Day 2021	Pct Delta	ROUTES	Thanksgiving Day 2020	Thanksgiving Day 2021	Pct Delta
1	86	93	8.1%	88	517	503	-2.7%
2	765	846	10.6%	99	390	368	-5.6%
3	2,596	2,580	-0.6%	101	27	42	55.6%
7	876	899	2.6%	102	282	408	44.7%
8	1,498	1,424	-4.9%	103	170	71	-58.2%
9	2,291	986	-57.0%	104	72	117	62.5%
10	958	1,106	15.4%	105	439	433	-1.4%
11	2,155	2,640	22.5%	107	542	477	-12.0%
12	662	744	12.4%	108	267	209	-21.7%
16	659	485	-26.4%	110	836	1,026	22.7%
17	1,582	1,118	-29.3%	112	3,657	2,928	-19.9%
21	684	411	-39.9%	113	207	181	-12.6%
22	1,244	1,068	-14.1%	115	104	75	-27.9%
24	493	501	1.6%	119	4,706	4,342	-7.7%
27	2,395	1,693	-29.3%	120	2,035	2,032	-0.1%
31	399	299	-25.1%	135	236	105	-55.5%
32	406	324	-20.2%	137	439	355	-19.1%
33	303	361	19.1%	150	1,041	1,256	20.7%
35	473	527	11.4%	183	744	816	9.7%
36	682	679	-0.4%	200	29	15	-48.3%
37	992	1,126	13.5%	202	55	78	41.8%
38	2,107	1,838	-12.8%	207	670	474	-29.3%
40	358	318	-11.2%	208	626	416	-33.5%
42	221	261	18.1%	210	97	162	67.0%
52	365	301	-17.5%	246	46	43	-6.5%
54	966	737	-23.7%	252	146	120	-17.8%
62	766	498	-35.0%	301	589	545	-7.5%
71	71	88	23.9%	302	48	49	2.1%
72	141	154	9.2%	338	15	25	66.7%
73	308	330	7.1%	500	30		
75	230	133	-42.2%				
77	3,136	2,328	-25.8%				
87	14	119	750.0%	Total	49,944	44,686	-10.5%

METROBUS HOLIDAY BOARDINGS BY ROUTE

Friday-After-Thanksgiving Holiday

ROUTES	Friday-After-Thanksgiving 2020	Friday-After-Thanksgiving 2021	Pct Delta	ROUTES	Friday-After-Thanksgiving 2020	Friday-After-Thanksgiving 2021	Pct Delta	ROUTES	Friday-After-Thanksgiving 2020	Friday-After-Thanksgiving 2021	Pct Delta
1	220	102	-53.6%	57	177	135	-23.7%	175			
2	1,468	1,687	14.9%	62	1,468	887	-39.6%	183	1,878	1,672	-11.0%
3	3,452	4,051	17.4%	71	484	348	-28.1%	195			
7	1,548	2,074	34.0%	72	291	336	15.5%	196			
8	2,604	2,944	13.1%	73	984	1,092	11.0%	200	89	2	-97.8%
9	5,018	4,383	-12.7%	75	751	598	-20.4%	202	94	45	-52.1%
10	789	1,320	67.3%	77	5,766	4,602	-20.2%	204			
11	4,083	5,818	42.5%	79				207	524	437	-16.6%
12	1,726	1,105	-36.0%	82	15	22	46.7%	208	717	661	-7.8%
16	947	1,057	11.6%	87	733	737	0.5%	210	190	240	26.3%
17	1,628	1,976	21.4%	88	1,200	1,602	33.5%	211	32	72	125.0%
19	660	595	-9.8%	93	1,173	1,525	30.0%	212	20	30	50.0%
21	1,118	937	-16.2%	95	142	51	-64.1%	217	40	71	77.5%
22	2,085	1,566	-24.9%	99	617	1,020	65.3%	238	380	406	6.8%
24	1,370	675	-50.7%	101	77	95	23.4%	246	77	51	-33.8%
27	3,341	3,560	6.6%	102	80	1,021	1176.3%	248	103	70	-32.0%
29	225	256	13.8%	103	298	165	-44.6%	252	255	322	26.3%
31	367	411	12.0%	104	283	430	51.9%	254	22	11	-50.0%
32	1,272	943	-25.9%	105	688	725	5.4%	267	115	43	-62.6%
33	859	701	-18.4%	107	544	872	60.3%	272	159	188	18.2%
34	617	257	-58.3%	108	269	352	30.9%	277	169	126	-25.4%
35	1,651	1,202	-27.2%	110	1,647	1,601	-2.8%	286	31	30	-3.2%
36	1,343	1,636	21.8%	112	6,188	6,451	4.3%	287	110	84	-23.6%
37	2,156	2,107	-2.3%	113	223	351	57.4%	288			
38	3,871	3,544	-8.4%	115	149	112	-24.8%	295			
39	94	51	-45.7%	119	6,612	7,158	8.3%	296			
40	782	862	10.2%	120	4,065	3,994	-1.7%	297	716	519	-27.5%
42	396	618	56.1%	132	28	10	-64.3%	301	846	775	-8.4%
46	54	10	-81.5%	135	512	332	-35.2%	302	75	65	-13.3%
51	1,728	1,528	-11.6%	136	17	53	211.8%	344	103	60	-41.7%
52	683	856	25.3%	137	890	954	7.2%	500	49		
54	2,039	1,511	-25.9%	150	990	1,026	3.6%	836		91	
56	139	130	-6.5%	155	43	19	-55.8%	Total (1)	94,531	95,220	0.7%

(1) Excludes Lifeline shuttles.

YEAR-OVER-YEAR BUS RIDERSHIP BY ROUTE SERVICE TYPE

Boardings by Service Type and Route	Average Weekday	Average Weekday	Percent Change	Average Saturday	Average Saturday	Percent Change	Average Sunday	Average Sunday	Percent Change	Total Monthly	Total Monthly	Percent Change
	Nov-21	Nov-20	21 vs 20	Nov-21	Nov-20	21 vs 20	Nov-21	Nov-20	21 vs 20	Nov-21	Nov-20	21 vs 20
Express Routes (1)												
34 EXPRESS	710	782	-9.1%							14,917	15,631	-4.6%
39 EXPRESS	192	191	0.5%							4,036	3,825	5.5%
95-EXPRESS	378	346	9.3%							7,938	6,915	14.8%
150-MIAMI BEACH AIRPORT FLYER	1,047	870	20.4%	1,108	918	20.7%	949	901	5.3%	31,162	26,477	17.7%
175 - NW MIAMI-DADE EXPRESS												
195 EXPRESS - BROWARD BLVD												
196 EXPRESS - SHERIDAN ST												
295 EXPRESS - BROWARD BLVD - CMC CENTER												
296 EXPRESS - SHERIDAN ST - CIVIC CENTER												
204 KAT-KILLIAN	251									501		
288 KENDALL CRUISER	213									425		
338 - WEEKEND EXPRESS				219	96	127.9%	164	87	89.1%	1,693	903	87.5%
836 EXPRESS	142									2,983		
Subtotal Express Routes	2,933	2,188	34.0%	1,327	1,014	30.8%	1,113	988	12.6%	63,655	53,751	18.4%
Percentage of All Bus Routes	2.5%	2.1%		1.8%	1.4%		2.1%	2.0%		2.1%	2.0%	
Contracted Regular & Circulator Routes												
1	148	162	-8.7%	162	196	-17.2%	126	129	-1.6%	4,385	4,792	-8.5%
29	310	317	-2.0%							6,520	6,339	2.9%
46 - LIBERTY CITY CONN.	19	18	5.8%							390	351	11.1%
56	244	164	49.0%							5,117	3,270	56.5%
71	438	335	30.7%	156	146	6.7%	115	110	4.4%	10,389	7,945	30.8%
72	479	382	25.5%	371	225	64.5%	247	177	39.5%	12,773	9,596	33.1%
82 - WESTCHESTER CIRC	22	33	-31.9%	13	21	-38.6%				517	702	-26.4%
101 - A	124	100	24.4%	63	59	6.8%	44	33	35.2%	3,082	2,329	32.3%
115	132	193	-31.6%	98	123	-19.8%	81	90	-10.1%	3,574	4,895	-27.0%
155 - BISCAYNE GARDENS CIRC	30	33	-8.5%							629	622	1.1%
202 - LITTLE HAITI CONN.	46	127	-63.6%	57	90	-36.0%	66	75	-12.1%	1,526	3,213	-52.5%
210 - SKYLAKE CIRC	261	187	39.7%	177	139	27.1%	141	122	16.1%	6,898	5,026	37.2%
211-OVERTOWN CIRC	72	36	103.9%							1,521	675	125.3%
212-SWEETWATER CIRC	40	15	158.2%							839	294	185.4%
217 - BUNCHE PARK CIRC	63	59	6.7%							1,326	1,124	18.0%
248 - PRINCETON CIRCULATOR	57	81	-29.6%							1,197	1,620	-26.1%
254-BROWNSVILLE CIRC	6	17	-62.5%							135	326	-58.6%
267-LUDLAM LIMITED	84	87	-3.0%							1,770	1,738	1.8%
272 KAT-SUNSET	316	195	62.7%							6,644	3,890	70.8%
286-NORTH POINTE CIRC	34	35	-2.5%	42	27	57.5%				887	774	14.6%
344	57	68	-16.2%							1,198	1,362	-12.0%
Subtotal Contracted Reg. & Circ. Routes	2,984	2,641	13.0%	1,139	1,025	11.1%	821	735	11.7%	71,317	60,883	17.1%
Percentage of All Bus Routes	2.5%	2.6%		1.5%	1.4%		1.5%	1.5%		2.3%	2.3%	

(1) Several express routes were suspended beginning at the end of March 2020, due to the SARS-CoV-2 pandemic, while other routes had alignment and schedule modifications made to them, in an ongoing effort to optimize service delivery..

YEAR-OVER-YEAR BUS RIDERSHIP BY ROUTE SERVICE TYPE

Boardings by Service Type and Route	Average Weekday Nov-21	Average Weekday Nov-20	Percent Change 21 vs 20	Average Saturday Nov-21	Average Saturday Nov-20	Percent Change 21 vs 20	Average Sunday Nov-21	Average Sunday Nov-20	Percent Change 21 vs 20	Total Monthly Nov-21	Total Monthly Nov-20	Percent Change 21 vs 20
Contracted Express Routes												
301-DADE MONROE EXPRESS	809	752	7.5%	810	833	-2.8%	683	663	2.9%	23,638	22,357	5.7%
302-CARD SOUND EXPRESS	67	61	8.8%	44	44	-1.7%	48	44	9.9%	1,818	1,668	9.0%
Subtotal Contracted Express Routes	876	814	7.6%	853	877	-2.7%	731	707	3.4%	25,456	24,025	6.0%
Percentage of All Bus Routes	0.7%	0.8%		1.2%	1.2%		1.4%	1.4%		0.8%	0.9%	
Limited Stop Routes												
51-FLAGLER MAX	2,546	1,801	41.4%							53,475	36,013	48.5%
79 STREET MAX	256									512		
93 - BISCAYNE MAX	1,961	1,427	37.4%							41,182	28,541	44.3%
120 - BEACH MAX	4,423	4,117	7.4%	3,795	3,535	7.4%	2,266	1,991	13.8%	119,400	108,429	10.1%
252-CORAL REEF MAX	514	369	39.1%	180	183	-1.8%	159	152	4.1%	12,299	9,030	36.2%
277-7TH AVENUE MAX	383	435	-12.0%							8,046	8,705	-7.6%
287-SAGA BAY MAX	173	104	65.4%							3,624	2,087	73.6%
297-27th AVENUE ORANGE MAX	688	698	-1.4%				85			14,618	13,954	4.8%
Subtotal Limited Stop (MAX) Routes	10,944	8,951	22.3%	3,975	3,717	6.9%	2,509	2,144	17.0%	253,156	206,759	22.4%
Percentage of All Bus Routes	9.2%	8.7%		5.4%	5.2%		4.7%	4.2%		8.3%	7.8%	
Free Route												
132 -TRI-RAIL DORAL	7	23	-67.9%							58	452	-87.2%
Percentage of All Bus Routes	0.0%	0.0%								0.0%	0.0%	
Shuttles												
55-MARLINS SHUTTLE												
Percentage of All Bus Routes												
Contractor-Operated Lifeline Routes												
GREEN HILLS SHUTTLE	5	7	-36.6%							23	29	-20.7%
KINGS CREEK SHUTTLE	9	9	3.8%							27	26	3.8%
SIERRA LAKES SHUTTLE	19	20	-7.5%							74	80	-7.5%
ROBERT SHARP SHUTTLE	23	18	27.8%							92	72	27.8%
AHEPA SHUTTLE	37	14	164.3%							111	42	164.3%
FEDERATION GARDENS SHUTTLE				22	18	22.9%				86	70	22.9%
Subtotal Contractor-Operated Lifeline Routes	92	68	35.6%	22	18	22.9%				413	319	29.5%
Percentage of All Bus Routes	0.1%	0.1%		0.0%	0.0%					0.0%	0.0%	
Other Circulator Route												
200-CUTLER BAY LOCAL (†)	150	92	63.1%	62	84	-26.6%	18	32	-44.7%	3,309	2,365	39.9%
Percentage of All Bus Routes	0.1%	0.1%		0.1%	0.1%		0.0%	0.1%		0.1%	0.1%	
All Other (Regular) Routes	101,540	88,385	14.9%	66,329	64,946	2.1%	48,392	45,876	5.5%	2,639,362	2,302,736	14.6%
Percentage of All Bus Routes	85.0%	85.7%		90.0%	90.6%		90.3%	90.9%		86.3%	86.9%	
Total Bus System	119,526	103,163	15.9%	73,705	71,680	2.8%	53,582	50,480	6.1%	3,056,726	2,651,290	15.3%

(†) Due to various communications system and process issues, the NextFare System did not capture a portion of the Cutler Bay Local ridership in November 2021.

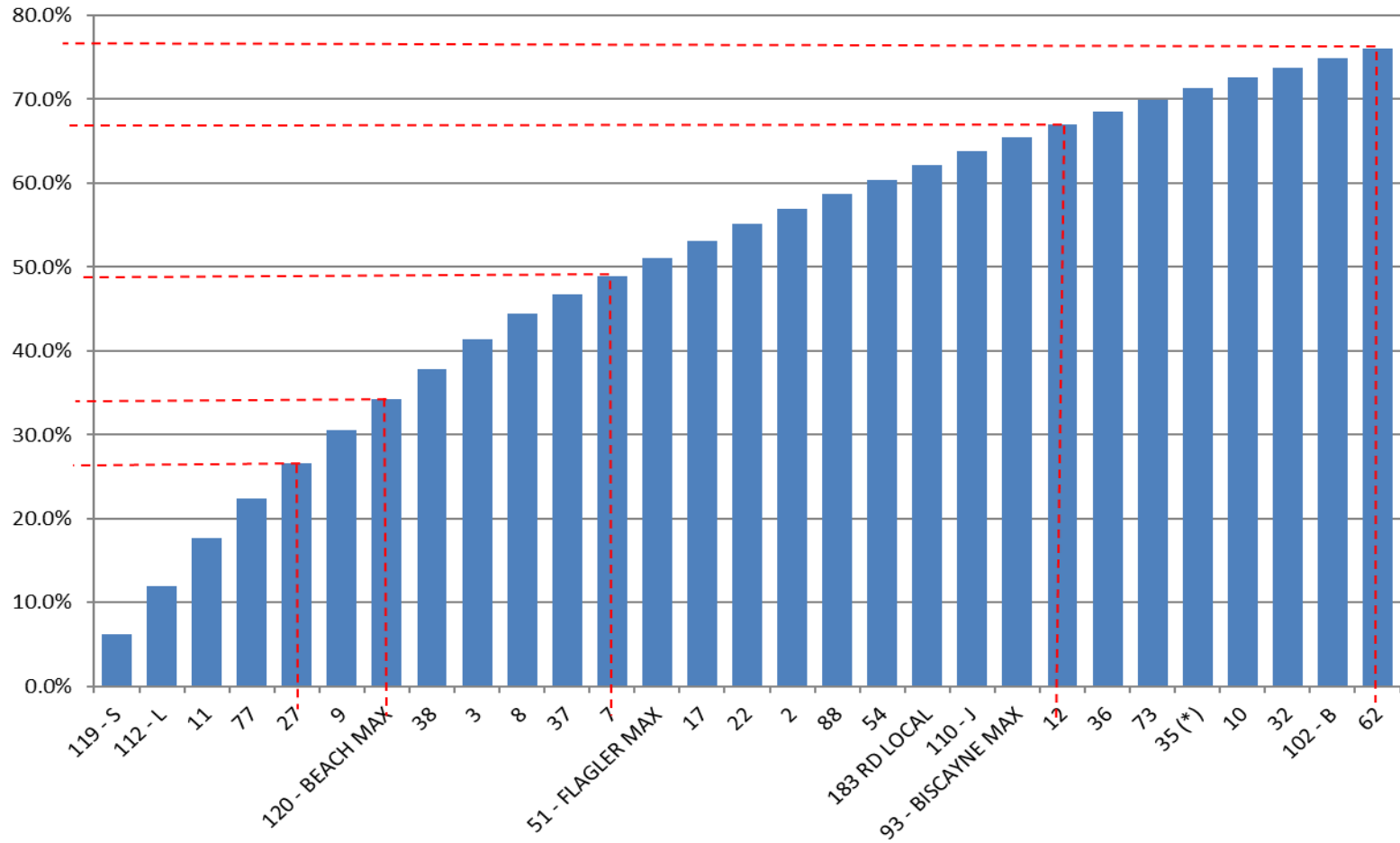
Bus Routes as Ranked by Percentage of Average Weekday Ridership

Rank	Route	Average Weekday	Percent Share	Cumul Pct Share	Rank	Route	Average Weekday	Percent Share	Cumul Pct Share	Rank	Route	Average Weekday	Percent Share	Cumul Pct Share
1	119	7,378	6.2%	6.2%	36	33	1,114	0.9%	82.8%	71	287	173	0.1%	98.7%
2	112	6,897	5.8%	11.9%	37	52	1,081	0.9%	83.7%	72	200	150	0.1%	98.8%
3	11	6,886	5.8%	17.7%	38	99	1,069	0.9%	84.6%	73	1	148	0.1%	98.9%
4	77	5,644	4.7%	22.4%	39	150	1,047	0.9%	85.4%	74	836	142	0.1%	99.1%
5	27	4,982	4.2%	26.6%	40	105	921	0.8%	86.2%	75	115	132	0.1%	99.2%
6	9	4,743	4.0%	30.6%	41	75	877	0.7%	86.9%	76	101	124	0.1%	99.3%
7	120	4,423	3.7%	34.3%	42	24	876	0.7%	87.7%	77	136	110	0.1%	99.4%
8	38	4,298	3.6%	37.9%	43	207	852	0.7%	88.4%	78	267	84	0.1%	99.4%
9	3	4,174	3.5%	41.4%	44	19	843	0.7%	89.1%	79	211	72	0.1%	99.5%
10	8	3,677	3.1%	44.4%	45	301	809	0.7%	89.8%	80	302	67	0.1%	99.6%
11	37	2,709	2.3%	46.7%	46	208	801	0.7%	90.4%	81	246	64	0.1%	99.6%
12	7	2,704	2.3%	49.0%	47	34	710	0.6%	91.0%	82	217	63	0.1%	99.7%
13	51	2,546	2.1%	51.1%	48	297	688	0.6%	91.6%	83	344	57	0.0%	99.7%
14	17	2,417	2.0%	53.1%	49	42	666	0.6%	92.2%	84	248	57	0.0%	99.8%
15	22	2,375	2.0%	55.1%	50	31	656	0.5%	92.7%	85	202	46	0.0%	99.8%
16	2	2,211	1.9%	56.9%	51	135	621	0.5%	93.2%	86	212	40	0.0%	99.8%
17	88	2,090	1.7%	58.7%	52	104	555	0.5%	93.7%	87	AS	37	0.0%	99.9%
18	54	2,063	1.7%	60.4%	53	252	514	0.4%	94.1%	88	286	34	0.0%	99.9%
19	183	2,022	1.7%	62.1%	54	72	479	0.4%	94.5%	89	155	30	0.0%	99.9%
20	110	1,985	1.7%	63.8%	55	71	438	0.4%	94.9%	90	RS	23	0.0%	99.9%
21	93	1,961	1.6%	65.4%	56	113	410	0.3%	95.2%	91	82	22	0.0%	99.9%
22	12	1,883	1.6%	67.0%	57	277	383	0.3%	95.6%	92	46	19	0.0%	100.0%
23	36	1,836	1.5%	68.5%	58	95	378	0.3%	95.9%	93	SL	19	0.0%	100.0%
24	73	1,696	1.4%	69.9%	59	238	371	0.3%	96.2%	94	KC	9	0.0%	100.0%
25	35	1,658	1.4%	71.3%	60	108	326	0.3%	96.5%	95	132	7	0.0%	100.0%
26	10	1,522	1.3%	72.6%	61	272	316	0.3%	96.7%	96	254	6	0.0%	100.0%
27	32	1,425	1.2%	73.8%	62	29	310	0.3%	97.0%	97	GH	5	0.0%	100.0%
28	102	1,348	1.1%	74.9%	63	210	261	0.2%	97.2%					
29	62	1,267	1.1%	76.0%	64	57	259	0.2%	97.4%					
30	16	1,215	1.0%	77.0%	65	79	256	0.2%	97.6%					
31	40	1,203	1.0%	78.0%	66	204	251	0.2%	97.8%					
32	107	1,153	1.0%	79.0%	67	56	244	0.2%	98.0%					
33	21	1,145	1.0%	79.9%	68	288	213	0.2%	98.2%					
34	137	1,141	1.0%	80.9%	69	103	196	0.2%	98.4%					
35	87	1,123	0.9%	81.8%	70	39	192	0.2%	98.5%					
										entirely contracted				
										contracted supplementals				
										Total Boardings	119,526	100.0%	100.0%	

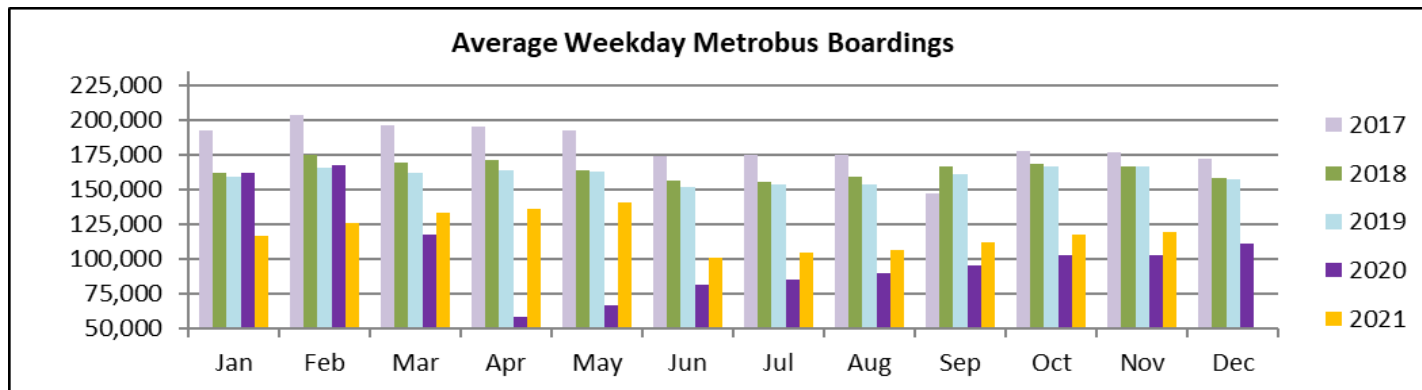
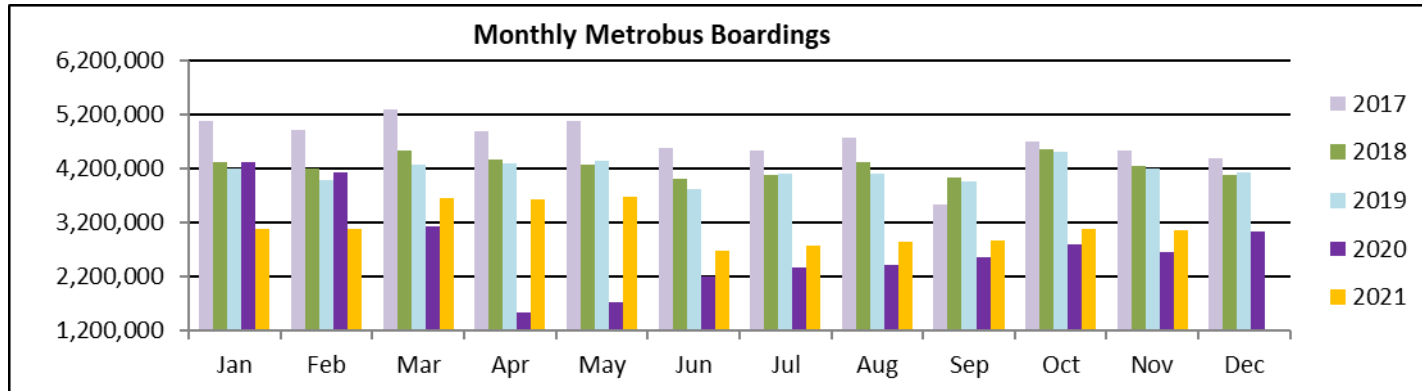
(1) Average weekday ridership rounded to the nearest unit; the routes shaded in blue are directly operated, with supplemental runs provided by contractors.

(2) Includes the five Lifeline Shuttles that operate on weekdays: Ahepa, Green Hills, Kings Creek, Robert Sharp and Sierra Lakes.

**Bus - Cumulative Percentage Average Weekday Ridership Share
Top 1/4, 1/3, 1/2, 2/3 and 3/4 of Routes**



TOTAL MONTHLY AND AVERAGE WEEKDAY RIDERSHIP YEAR OVER YEAR COMPARISON CHARTS – METROBUS

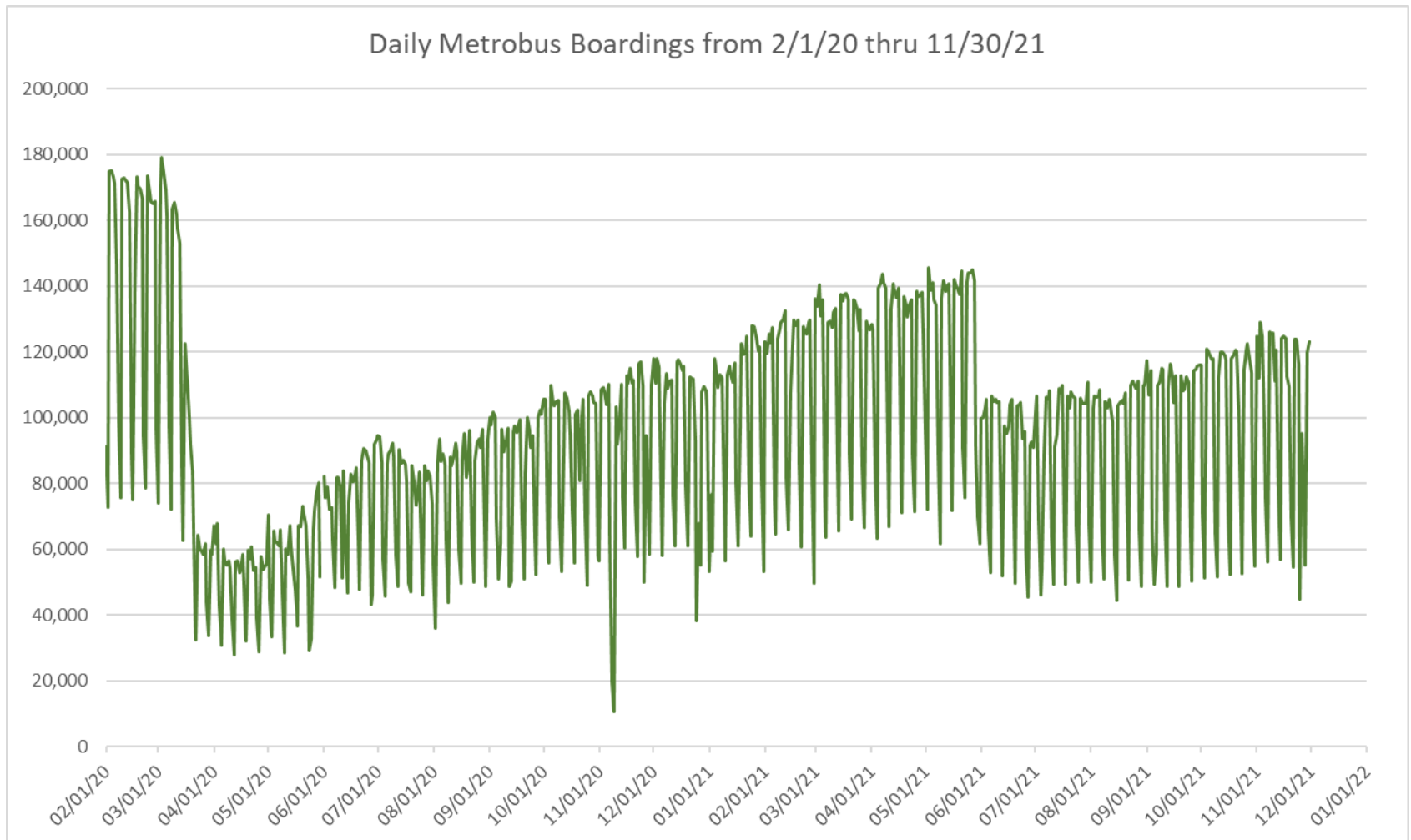


“TOP 5 / BOTTOM 5” BUS ROUTES AVERAGE WEEKDAY RIDERSHIP PERFORMANCE YEAR OVER YEAR COMPARISONS

Route	Nov-21	Nov-20	Absolute Delta (1)	Percent Delta (2)
11	6,886	4,881	2,005	41.1%
102 - B	1,348	188	1,160	616.7%
7	2,704	1,797	908	50.5%
119 - S	7,378	6,620	758	11.5%
51 - FLAGLER MAX	2,546	1,801	746	41.4%
24	876	1,262	-385	-30.5%
62	1,267	1,565	-298	-19.0%
21	1,145	1,330	-185	-13.9%
12	1,883	2,031	-148	-7.3%
183 RD LOCAL	2,022	2,145	-123	-5.7%

- (1) Averages rounded to the nearest boarding, data as reported by APC system or/and contractor, depending on route; Lifelines excluded.
- (2) As a result of the SARS-CoV-2 pandemic, rides were fare-free beginning March 22, 2020; many bus routes continued reporting YOY gains in November 2021, since November 2020 showed clear reduction effects on ridership from the SARS-CoV-2 pandemic. Fares were reinstated June 1, 2021, and ridership data from the farebox system rather than the automatic passenger counter system is utilized from that date going forward.

DAILY METROBUS RIDERSHIP SINCE FEBRUARY 1, 2020



- (1) National Emergency was declared on 3/13/20 as a result of the SARS-CoV-2 pandemic.
- (2) There was no Metrobus, Metrorail and Metromover service on 5/31/20, as a safety precaution.
- (3) The dip at the start of the second week of November 2020 is due to Hurricane Eta.
- (4) The reduction seen beginning 6/1/21 is partly due to the resumption of fares and partly the result of resuming reporting Cubic farebox data rather than bus APC counts.
- (5) Periodic (weekly) variations are prominent, since weekday ridership is almost always significantly higher than weekend or holiday ridership.

METROBUS PARKING PATRONAGE SUMMARY

November 2021

PARK-RIDE LOT	ACTUAL AVAILABLE SPACES	ACTUAL OCCUPANCY	PERCENT OCCUPANCY
Transitway / SW 152nd St	200	74	37%
Transitway / SW 168th St	149	87	58%
Transitway / SW 200th Street (effective February 2020)	100	24	24%
Transitway / SW 112 Ave (Target)	450	135	30%
Transitway / SW 244th St	95	33	35%
Transitway / SW 296th St	139	42	30%
Transitway / SW 344th St	248	126	51%
Coral Reef Drive 117/ Turnpike	95	62	65%
Golden Glades - East Lot	535	219	41%
Golden Glades - West Lot	1,007	0	0%
Hammocks Town Center (SW 152 Ave / SW 104 St)	50	0	0%
Kendall Dr./SW 127th Ave	161	8	5%
West Kendall Transit Term (Kendall Dr / SW162 Ave)	40	8	20%
NW 7th Avenue Transit Village (NW 7 Ave / NW 62 St)	25	16	64%
Miami Gardens Dr. / NW 73rd Ave	136	0	0%
Dolphin Station (effective Mar 2020)	348	54	16%
I-75 / Miami Gardens Dr (effective June 2019)	298	0	0%
TOTAL	4,076	888	22%

Note: some park-ride lots are joint-use and the number of park-ride vehicles may exceed the number of spaces allocated.

Metrorail



November 2021

METRORAIL AVERAGE WEEKDAY BOARDINGS BY STATION (†)

Weekdays	Average Weekday	Average Weekday	Percent Change	Average Weekday	Percent Change	Average Weekday	Percent Change	Average Weekday	Percent Change
STATIONS	Nov-21	Nov-20	YOY	Feb-20	Current vs Feb-20	Oct-21	MOM	Nov-19	YO2Y
ALLAPATTAH	1,145	1,169	-2.1%	1,942	-41.1%	1,074	6.6%	1,885	-39.3%
BRICKELL	3,567	3,406	4.7%	6,529	-45.4%	3,351	6.4%	6,232	-42.8%
BROWNSVILLE	593	710	-16.4%	862	-31.2%	579	2.4%	839	-29.3%
CIVIC CENTER	3,120	2,343	33.1%	6,143	-49.2%	2,999	4.0%	5,926	-47.3%
COCONUT GROVE	1,082	924	17.0%	1,795	-39.7%	1,050	3.0%	1,701	-36.4%
CULMER	830	852	-2.6%	1,392	-40.4%	805	3.0%	1,321	-37.2%
DADELAND NORTH	2,944	2,716	8.4%	5,926	-50.3%	2,775	6.1%	5,832	-49.5%
DADELAND SOUTH	3,399	2,316	46.7%	7,150	-52.5%	3,249	4.6%	7,120	-52.3%
DOUGLAS ROAD	2,272	1,605	41.6%	3,624	-37.3%	2,185	4.0%	3,555	-36.1%
DR. MARTIN LUTHER KING, JR.	717	740	-3.1%	1,157	-38.0%	675	6.3%	1,162	-38.3%
EARLINGTON HEIGHTS	948	937	1.2%	1,662	-42.9%	943	0.5%	1,582	-40.1%
GOVERNMENT CENTER	4,859	3,033	60.2%	10,557	-54.0%	4,636	4.8%	10,067	-51.7%
HIALEAH	825	709	16.4%	1,253	-34.2%	801	3.0%	1,286	-35.9%
MIAMI INTERNATIONAL AIRPORT	854	638	33.9%	1,711	-50.1%	722	18.4%	1,692	-49.5%
NORTHSIDE	970	852	13.8%	1,476	-34.2%	937	3.6%	1,367	-29.0%
OKEECHOBEE	637	608	4.9%	1,164	-45.3%	631	1.0%	1,137	-44.0%
OVERTOWN / ARENA	1,002	701	42.9%	2,274	-56.0%	888	12.8%	2,166	-53.8%
PALMETTO	886	721	22.9%	1,543	-42.6%	876	1.2%	1,358	-34.7%
SANTA CLARA	472	482	-2.1%	812	-41.8%	442	6.7%	778	-39.3%
SOUTH MIAMI	1,536	1,292	18.9%	3,015	-49.1%	1,519	1.1%	2,914	-47.3%
TRI-RAIL	720	708	1.7%	1,207	-40.4%	754	-4.6%	1,139	-36.8%
UNIVERSITY	1,278	588	117.4%	2,784	-54.1%	1,329	-3.8%	2,595	-50.8%
VIZCAYA	851	670	27.1%	1,390	-38.8%	816	4.3%	1,321	-35.6%
TOTAL	35,508	28,721	23.6%	67,367	-47.3%	34,035	4.3%	64,976	-45.4%

(†) In this table and those which follow, "YOY" stands for "year-over-year", "MOM" for "month-over-month" and "YO2Y" for "year over two years", i.e., current month vs 12 months prior, one month prior and 24 months prior, respectively.

(*) Due to effects from the SARS-CoV-2 pandemic; rides were fare-free beginning March 22, 2020; fares were reinstated on June 1, 2021, in part accounting for the drop in ridership from May 2021.

METRORAIL AVERAGE SATURDAY BOARDINGS BY STATION

Saturdays	Average Saturday	Average Saturday	Percent Change	Average Saturday	Percent Change	Average Saturday	Percent Change	Average Saturday	Percent Change
STATIONS	Nov-21	Nov-20	YOY	Feb-20	Current vs Feb-20	Oct-21	MOM	Nov-19	YO2Y
ALLAPATTAH	643	752	-14.5%	1,051	-38.9%	634	1.4%	996	-35.5%
BRICKELL	1,885	2,103	-10.4%	2,811	-32.9%	1,741	8.3%	2,604	-27.6%
BROWNSVILLE	374	505	-25.8%	520	-28.0%	350	7.1%	520	-28.0%
CIVIC CENTER	547	575	-4.9%	959	-43.0%	511	6.9%	926	-41.0%
COCONUT GROVE	621	569	9.1%	928	-33.2%	579	7.2%	833	-25.5%
CULMER	406	556	-27.1%	721	-43.7%	387	4.7%	677	-40.1%
DADELAND NORTH	1,239	1,460	-15.2%	1,994	-37.9%	1,106	12.0%	1,924	-35.6%
DADELAND SOUTH	1,499	1,512	-0.8%	2,625	-42.9%	1,434	4.5%	2,580	-41.9%
DOUGLAS ROAD	974	1,006	-3.2%	1,319	-26.2%	929	4.8%	1,333	-26.9%
DR. MARTIN LUTHER KING, JR.	397	532	-25.4%	625	-36.4%	349	13.9%	621	-36.1%
EARLINGTON HEIGHTS	549	651	-15.7%	935	-41.3%	545	0.8%	894	-38.5%
GOVERNMENT CENTER	2,232	1,850	20.7%	4,262	-47.6%	1,979	12.8%	3,753	-40.5%
HIALEAH	434	422	3.0%	583	-25.5%	384	13.0%	613	-29.1%
MIAMI INTERNATIONAL AIRPORT	729	612	19.1%	1,330	-45.2%	587	24.2%	1,304	-44.1%
NORTHSIDE	621	619	0.3%	878	-29.3%	603	3.0%	851	-27.1%
OKEECHOBEE	279	320	-12.6%	408	-31.6%	283	-1.3%	398	-29.8%
OVERTOWN / ARENA	385	421	-8.4%	678	-43.2%	330	16.6%	552	-30.2%
PALMETTO	295	310	-4.8%	458	-35.7%	307	-4.2%	348	-15.4%
SANTA CLARA	269	301	-10.4%	422	-36.2%	237	13.8%	394	-31.7%
SOUTH MIAMI	741	701	5.6%	1,256	-41.0%	729	1.5%	1,173	-36.9%
TRI-RAIL	329	398	-17.2%	614	-46.4%	353	-6.6%	542	-39.2%
UNIVERSITY	407	311	31.1%	714	-43.0%	456	-10.7%	662	-38.5%
VIZCAYA	387	428	-9.6%	622	-37.8%	354	9.4%	604	-35.9%
TOTAL	16,240	16,909	-4.0%	26,714	-39.2%	15,166	7.1%	25,101	-35.3%

METRORAIL AVERAGE SUNDAY BOARDINGS BY STATION

Sundays	Average Sunday	Average Sunday	Percent Change	Average Sunday	Percent Change	Average Sunday	Percent Change	Average Sunday	Percent Change
STATIONS	Nov-21	Nov-20	YOY	Feb-20	Current vs Feb-20	Oct-21	MOM	Nov-19	YO2Y
ALLAPATTAH	489	528	-7.4%	791	-38.2%	433	12.8%	772	-36.7%
BRICKELL	1,494	1,571	-4.9%	2,379	-37.2%	1,327	12.6%	2,097	-28.8%
BROWNSVILLE	272	409	-33.6%	406	-33.1%	264	2.8%	382	-28.8%
CIVIC CENTER	426	489	-12.9%	791	-46.2%	402	5.9%	713	-40.3%
COCONUT GROVE	466	399	16.8%	838	-44.5%	397	17.4%	651	-28.4%
CULMER	315	419	-25.0%	616	-48.9%	317	-0.7%	536	-41.3%
DADELAND NORTH	966	1,076	-10.2%	1,685	-42.7%	822	17.5%	1,454	-33.6%
DADELAND SOUTH	1,212	1,030	17.6%	2,210	-45.2%	1,109	9.3%	2,000	-39.4%
DOUGLAS ROAD	684	625	9.5%	1,090	-37.2%	657	4.2%	969	-29.4%
DR. MARTIN LUTHER KING, JR.	310	349	-11.1%	506	-38.7%	287	8.2%	472	-34.2%
EARLINGTON HEIGHTS	440	374	17.6%	799	-45.0%	415	5.9%	730	-39.8%
GOVERNMENT CENTER	1,721	1,062	62.1%	4,044	-57.5%	1,550	11.0%	2,956	-41.8%
HIALEAH	302	271	11.1%	472	-36.1%	280	7.5%	449	-32.9%
MIAMI INTERNATIONAL AIRPORT	776	429	80.9%	1,343	-42.2%	648	19.9%	1,265	-38.6%
NORTHSIDE	475	470	1.1%	653	-27.2%	460	3.3%	652	-27.2%
OKEECHOBEE	180	155	16.3%	273	-34.2%	150	20.0%	253	-28.8%
OVERTOWN / ARENA	341	324	5.0%	544	-37.4%	292	16.6%	464	-26.6%
PALMETTO	169	149	13.6%	336	-49.8%	161	4.7%	216	-21.7%
SANTA CLARA	162	184	-11.7%	280	-41.9%	157	3.5%	271	-40.1%
SOUTH MIAMI	560	515	8.7%	987	-43.3%	541	3.4%	849	-34.1%
TRI-RAIL	276	271	1.7%	528	-47.7%	307	-10.1%	437	-36.9%
UNIVERSITY	362	191	89.7%	608	-40.4%	328	10.5%	490	-26.1%
VIZCAYA	311	211	47.5%	524	-40.6%	274	13.5%	448	-30.6%
TOTAL	12,705	11,500	10.5%	22,701	-44.0%	11,577	9.7%	19,523	-34.9%

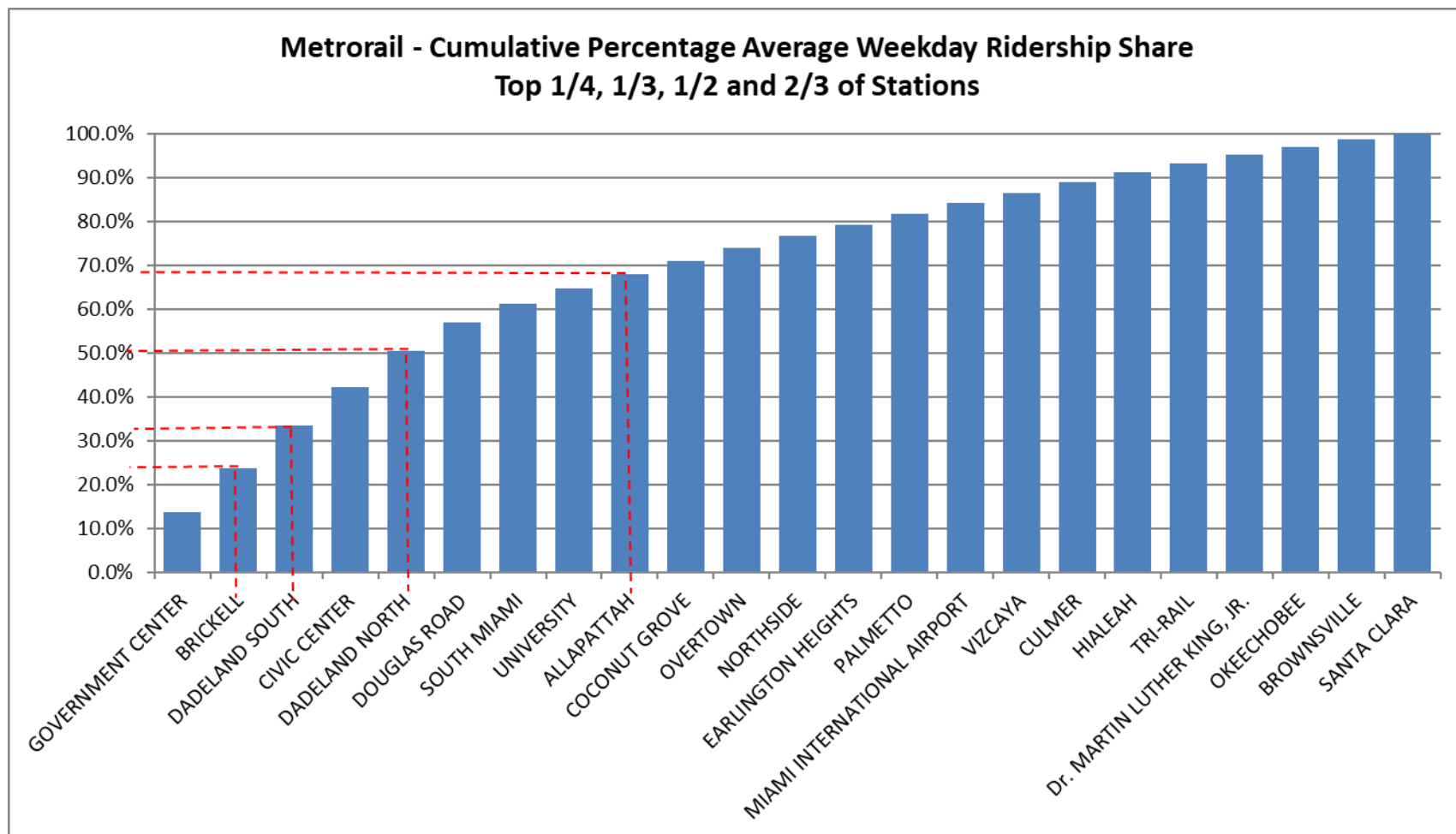
METRORAIL TOTAL MONTHLY BOARDINGS BY STATION

Monthly Totals	Total Month	Total Month	Percent Change	Total Month	Percent Change	Total Month	Percent Change	Total Month	Percent Change
STATIONS	Nov-21	Nov-20	YOY	Feb-20	Current vs Feb-20	Oct-21	MOM	Nov-19	YO2Y
ALLAPATTAH	28,551	29,212	-2.3%	46,868	-39.1%	27,803	2.7%	45,416	-37.1%
BRICKELL	88,150	84,579	4.2%	152,259	-42.1%	85,515	3.1%	144,016	-38.8%
BROWNSVILLE	15,085	18,449	-18.2%	21,285	-29.1%	15,226	-0.9%	20,905	-27.8%
CIVIC CENTER	67,155	50,543	32.9%	128,921	-47.9%	66,983	0.3%	121,023	-44.5%
COCONUT GROVE	27,033	22,834	18.4%	43,580	-38.0%	26,839	0.7%	40,217	-32.8%
CULMER	20,184	21,571	-6.4%	33,497	-39.7%	20,396	-1.0%	31,624	-36.2%
DADELAND NORTH	69,504	65,172	6.6%	132,894	-47.7%	67,396	3.1%	128,684	-46.0%
DADELAND SOUTH	81,261	57,717	40.8%	162,416	-50.0%	80,481	1.0%	159,249	-49.0%
DOUGLAS ROAD	53,388	39,210	36.2%	82,141	-35.0%	53,656	-0.5%	79,562	-32.9%
DR. MARTIN LUTHER KING, JR.	17,772	18,776	-5.3%	27,980	-36.5%	17,274	2.9%	27,936	-36.4%
EARLINGTON HEIGHTS	23,946	23,364	2.5%	40,697	-41.2%	24,540	-2.4%	38,851	-38.4%
GOVERNMENT CENTER	115,570	73,353	57.6%	243,414	-52.5%	114,138	1.3%	224,191	-48.5%
HIALEAH	20,244	17,270	17.2%	29,516	-31.4%	20,050	1.0%	30,242	-33.1%
MIAMI INTERNATIONAL AIRPORT	24,493	17,716	38.3%	46,115	-46.9%	21,319	14.9%	46,394	-47.2%
NORTHSIDE	24,870	21,900	13.6%	36,127	-31.2%	24,913	-0.2%	34,296	-27.5%
OKEECHOBEE	15,012	14,110	6.4%	26,026	-42.3%	15,332	-2.1%	25,070	-40.1%
OVERTOWN / ARENA	23,257	17,206	35.2%	49,911	-53.4%	21,539	8.0%	45,787	-49.2%
PALMETTO	20,074	16,339	22.9%	33,944	-40.9%	20,638	-2.7%	28,742	-30.2%
SANTA CLARA	11,587	11,845	-2.2%	19,245	-39.8%	11,224	3.2%	18,470	-37.3%
SOUTH MIAMI	36,902	31,142	18.5%	69,412	-46.8%	38,089	-3.1%	65,953	-44.0%
TRI-RAIL	17,262	17,132	0.8%	29,120	-40.7%	19,139	-9.8%	26,974	-36.0%
UNIVERSITY	29,203	13,792	111.7%	61,253	-52.3%	31,732	-8.0%	55,224	-47.1%
VIZCAYA	20,378	16,261	25.3%	32,497	-37.3%	20,161	1.1%	30,622	-33.5%
TOTAL	850,881	699,492	21.6%	1,549,118	-45.1%	844,383	0.8%	1,469,448	-42.1%

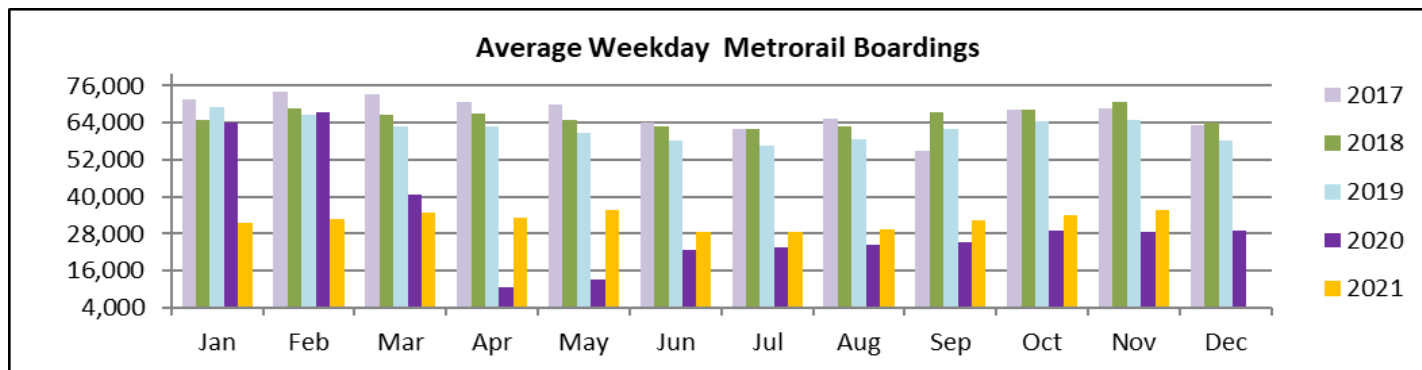
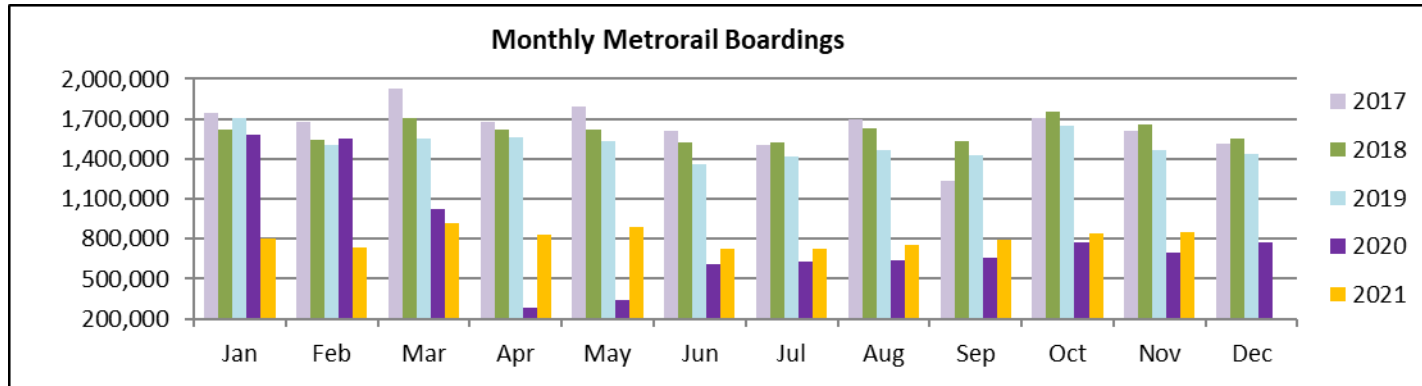
METRORAIL HOLIDAY BOARDINGS BY STATION

	Veterans Day	Veterans Day	Percent Change	Thanksgiving Day	Thanksgiving Day	Percent Change	Friday-After Thanksgiving	Friday-After Thanksgiving	Percent Change
STATIONS	2020	2021	21 vs 20	2020	2021	21 vs 20	2020	2021	21 vs 20
ALLAPATTAH	1,164	1,024	-12.0%	407	436	7.1%	946	818	-13.5%
BRICKELL	3,349	3,214	-4.0%	1,015	1,283	26.4%	2,639	2,365	-10.4%
BROWNSVILLE	718	559	-22.1%	274	260	-5.1%	617	409	-33.7%
CIVIC CENTER	2,024	2,427	19.9%	504	436	-13.5%	1,088	1,121	3.0%
COCONUT GROVE	895	993	10.9%	311	379	21.9%	721	765	6.1%
CULMER	821	666	-18.9%	429	372	-13.3%	656	496	-24.4%
DADELAND NORTH	2,475	2,240	-9.5%	566	567	0.2%	2,029	1,939	-4.4%
DADELAND SOUTH	2,144	2,726	27.1%	735	1,033	40.5%	1,951	2,084	6.8%
DOUGLAS ROAD	1,493	1,707	14.3%	466	575	23.4%	1,215	1,296	6.7%
DR. MARTIN LUTHER KING, JR.	703	598	-14.9%	246	243	-1.2%	628	473	-24.7%
EARLINGTON HEIGHTS	918	836	-8.9%	378	452	19.6%	733	685	-6.5%
GOVERNMENT CENTER	2,833	3,335	17.7%	976	1,423	45.8%	2,238	2,676	19.6%
HIALEAH	658	752	14.3%	242	322	33.1%	573	560	-2.3%
MIAMI INTERNATIONAL AIRPORT	568	741	30.5%	439	692	57.6%	629	807	28.3%
NORTHSIDE	877	865	-1.4%	266	410	54.1%	592	778	31.4%
OKEECHOBEE	567	529	-6.7%	169	195	15.4%	386	343	-11.1%
OVERTOWN / ARENA	558	617	10.6%	248	255	2.8%	481	450	-6.4%
PALMETTO	712	741	4.1%	178	196	10.1%	486	441	-9.3%
SANTA CLARA	456	414	-9.2%	205	156	-23.9%	382	320	-16.2%
SOUTH MIAMI	1,309	1,287	-1.7%	287	410	42.9%	911	815	-10.5%
TRI-RAIL	677	595	-12.1%	242	194	-19.8%	523	376	-28.1%
UNIVERSITY	580	1,307	125.3%	136	179	31.6%	301	364	20.9%
VIZCAYA	671	644	-4.0%	236	252	6.8%	536	524	-2.2%
TOTAL	27,170	28,817	6.1%	8,955	10,720	19.7%	21,261	20,905	-1.7%

METRORAIL CUMULATIVE PERCENTAGE RIDERSHIP SHARE



TOTAL MONTHLY AND AVERAGE WEEKDAY RIDERSHIP YEAR OVER YEAR COMPARISON CHARTS – METRORAIL



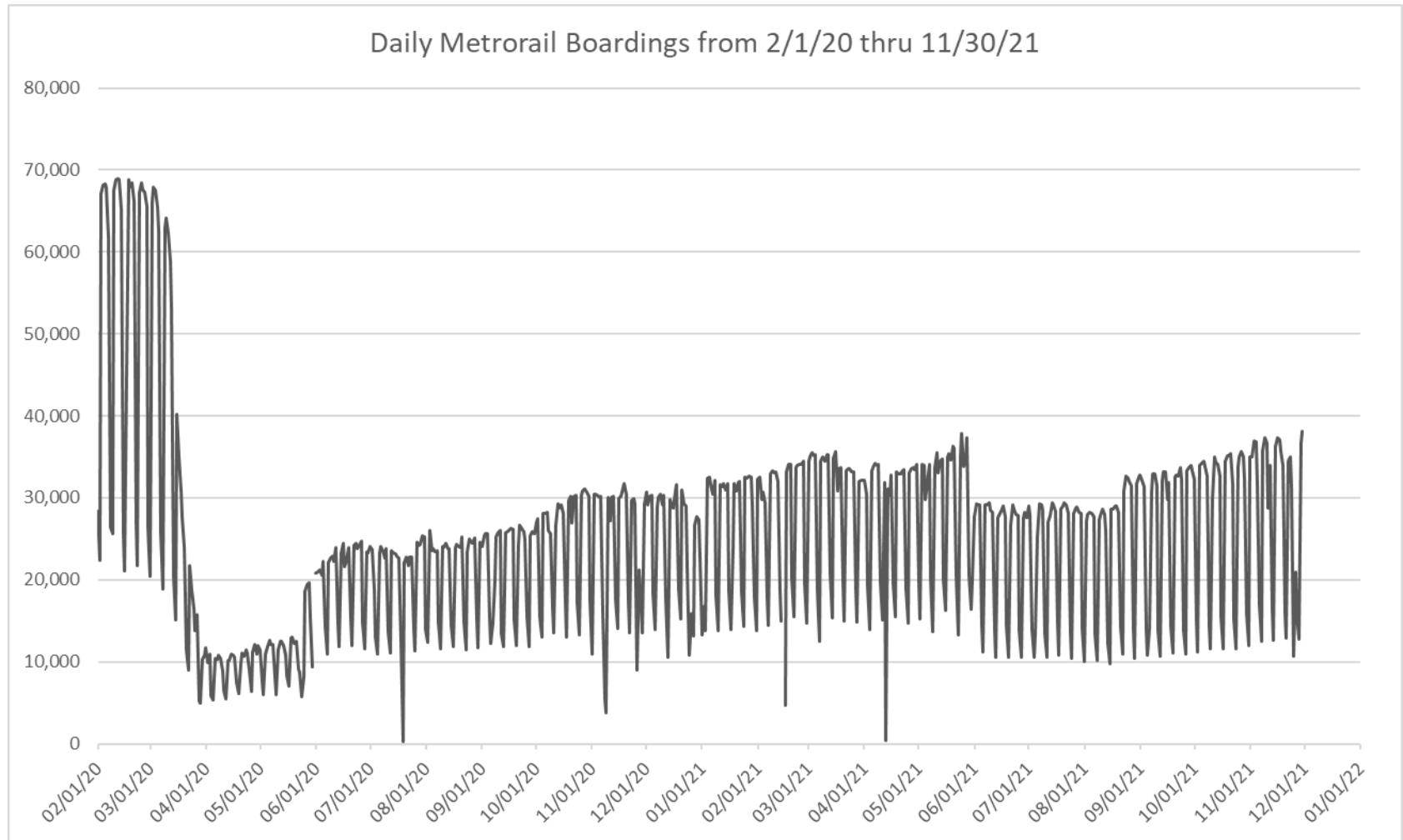
“TOP 5 / BOTTOM 5” RAIL STATIONS AVERAGE WEEKDAY RIDERSHIP PERFORMANCE YEAR OVER YEAR COMPARISONS

Station	Nov-21	Nov-20	Absolute Delta (1)	Percent Delta
GOVERNMENT CENTER	4,859	3,033	1,826	60.2%
DADELAND SOUTH	3,399	2,316	1,083	46.7%
CIVIC CENTER	3,120	2,343	777	33.1%
UNIVERSITY	1,278	588	690	117.4%
DOUGLAS ROAD	2,272	1,605	668	41.6%
BROWNSVILLE	593	710	-116	-16.4%
ALLAPATTAH	1,145	1,169	-25	-2.1%
Dr. MARTIN LUTHER KING, JR.	717	740	-23	-3.1%
CULMER	830	852	-22	-2.6%
SANTA CLARA	472	482	-10	-2.1%

(1) Averages rounded to the nearest boarding.

(2) As a result of the SARS-CoV-2 pandemic, rides were fare-free beginning March 22, 2020; many rail stations continued reporting YOY gains in November 2021, since November 2020 showed clear reduction effects on ridership from the SARS-CoV-2 pandemic. Fares were reinstated June 1, 2021, and ridership data from the faregate system rather than the video camera counter system is utilized from that date going forward.

DAILY METRORAIL RIDERSHIP SINCE FEBRUARY 1, 2020



- (1) National Emergency was declared on 3/13/20 as a result of the SARS-CoV-2 pandemic.
- (2) There was no Metrobus, Metrorail and Metromover service on 5/31/20, as a safety precaution.
- (3) The dip at the start of the second week of November 2020 is due to Hurricane Eta; these are *raw data* from the Unleash Live contractor AI video system.
- (4) The dip on 4/13/21 is due to a loss of connectivity at all stations, affecting a few stations over the next two days as well.
- (5) The reduction seen beginning 6/1/21 is partly due to the resumption of fares and partly the result of resuming reporting Cubi faregate data rather than video camera counts.
- (6) Periodic (weekly) variations are prominent, since weekday ridership is almost always significantly higher than weekend or holiday ridership.

METRORAIL PARKING PATRONAGE SUMMARY

November 2021

PARK-RIDE LOT	ACTUAL CAPACITY (1)	ACTUAL OCCUPANCY (2)	PERCENT OCCUPANCY
DADELAND SOUTH	1,260	701	56%
DADELAND NORTH	1,963	884	45%
SOUTH MIAMI	837	292	35%
UNIVERSITY	230	80	35%
DOUGLAS ROAD	220	217	99%
COCONUT GROVE, (*)	100	0	0%
VIZCAYA	120	41	34%
CULMER	40	7	18%
SANTA CLARA	61	34	56%
ALLAPATTAH	74	4	5%
EARLINGTON HEIGHTS	361	103	29%
BROWNSVILLE	100	49	49%
DR. MARTIN LUTHER KING JR. (MDT), (*)	62	0	0%
DR. MARTIN LUTHER KING JR. (GARAGE), (*)	631	0	0%
NORTHSIDE	100	61	61%
HIALEAH	338	35	10%
OKEECHOBEE	1,256	127	10%
PALMETTO	700	136	19%
TOTAL	8,453	2,771	33%

- (1) Number of spaces could vary each week; shown are available spaces during final week of month, as submitted by DTPW Safety & Security office.
- (2) All occupancy data provided by DTPW Safety & Security office.
- (3) Daily averages rounded to nearest unit, with fewer counts at some stations due to shortage of DTPW Safety & Security office staff; calculations are based on counted days only per raw data submitted, with resulting average daily occupancy shown.
- (*) Closed throughout the month, per the DTPW Safety & Security office.

Metromover



METROMOVER MONTHLY AND AVERAGE DAILY BOARDINGS BY STATION

	Average Weekday	Average Weekday	Percent Change	Average Saturday	Average Saturday	Percent Change	Average Sunday	Average Sunday	Percent Change	Total Monthly	Total Monthly	Percent Change
STATIONS	Nov-21	Nov-20	21 vs 20	Nov-21	Nov-20	21 vs 20	Nov-21	Nov-20	21 vs 20	Nov-21	Nov-20	21 vs 20
School Board	684	403	69.6%	593	348	70.4%	504	279	80.6%	19,207	11,242	70.9%
Omni	1,341	654	105.1%	1,141	580	96.7%	926	413	124.5%	36,919	17,585	109.9%
Museum Park	210	75	182.2%	333	95	250.9%	296	88	235.8%	7,498	2,457	205.2%
Eleventh Street	226	133	70.0%	189	101	87.1%	136	71	91.5%	6,175	3,480	77.4%
Park West	355	201	76.2%	431	176	145.0%	249	109	128.0%	6,647	5,279	25.9%
Freedom Tower												
Government Center	2,079	1,206	72.3%	1,530	872	75.5%	1,270	698	82.0%	54,885	31,479	74.4%
Miami Avenue	248	213	16.2%	208	140	48.6%	163	142	14.8%	5,369	5,640	-4.8%
Third Street	253	172	46.9%	220	125	76.6%	166	113	46.4%	6,953	4,655	49.4%
Knight Center	403	269	50.2%	266	140	89.5%	227	143	58.5%	10,544	6,754	56.1%
Bayfront Park	1,556	869	79.1%	1,326	768	72.8%	1,220	602	102.8%	43,722	23,948	82.6%
First Street	929	593	56.6%	802	475	68.8%	689	436	58.0%	25,593	16,295	57.1%
College/Bayside	1,079	572	88.6%	1,038	495	109.7%	702	373	88.2%	20,488	15,553	31.7%
College North	569	230	146.9%	420	131	219.6%	304	80	281.3%	14,763	5,472	169.8%
Wilkie D. Ferguson	776	283	174.0%	652	249	162.2%	475	199	138.5%	20,876	7,758	169.1%
Riverwalk	439	203	116.1%	405	142	186.4%	317	112	182.3%	12,521	5,230	139.4%
Fifth Street	342	201	70.2%	251	118	111.8%	181	84	116.8%	8,926	5,013	78.1%
Eighth Street	1,159	492	135.8%	1,253	510	145.9%	934	349	167.5%	34,046	14,191	139.9%
Tenth Street	599	342	74.9%	472	286	65.1%	369	182	103.3%	16,036	9,024	77.7%
Brickell	1,801	1,159	55.4%	1,520	1,076	41.3%	1,251	829	50.9%	49,550	32,199	53.9%
Financial District	708	367	92.7%	461	242	90.7%	346	162	113.4%	18,211	9,168	98.6%
TOTAL	15,755	8,638	82.4%	13,507	7,066	91.2%	10,723	5,463	96.3%	418,929	232,422	80.2%

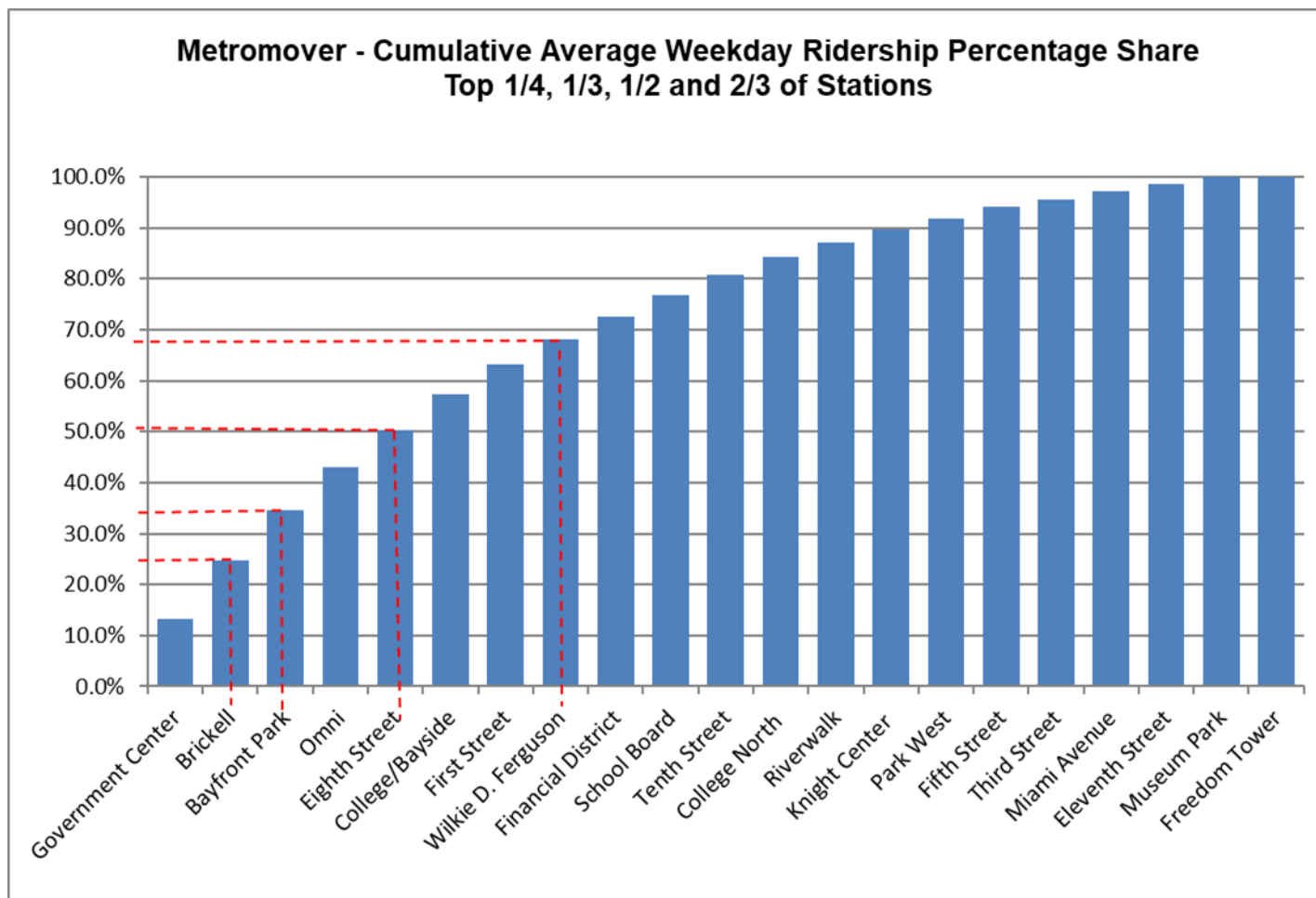
(1) Freedom Tower Station was closed for construction.

(*) APC system did not report boardings data at several stations on several days in November 2021; the average daily ridership calculations take this into account.

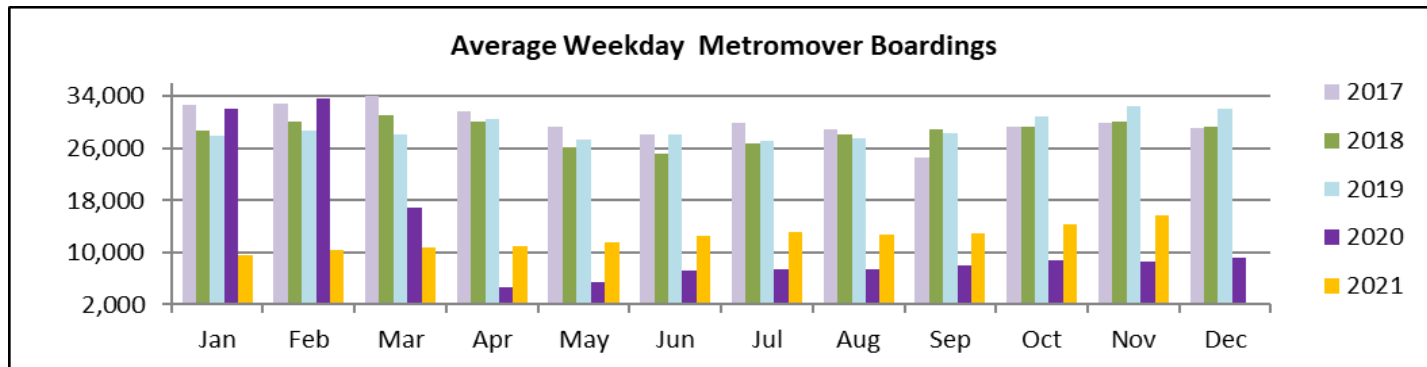
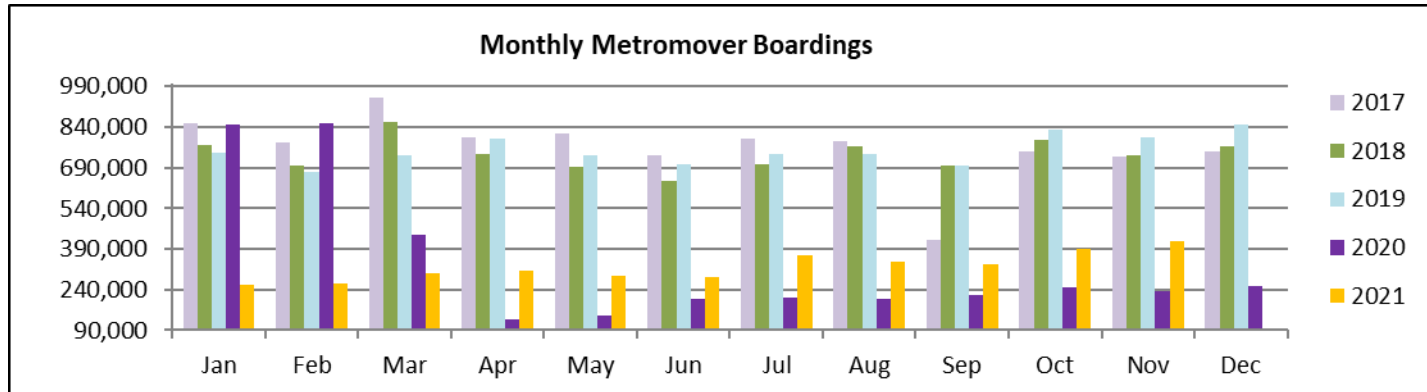
METROMOVER HOLIDAY BOARDINGS BY STATION

	Veterans Day	Veterans Day	Percent Change	Thanksgiving	Thanksgiving	Percent Change	Friday-After-Thanksgiving	Friday-After-Thanksgiving	Percent Change
STATIONS	2020	2021	21 vs 20	2020	2021	21 vs 20	2020	2021	21 vs 20
School Board	405	621	53.3%	303	514	69.6%	491	696	41.8%
Omni	729	1,132	55.3%	301	777	158.1%	410	1,272	210.2%
Museum Park	103	385	273.8%	86	231	168.6%	108	376	248.1%
Eleventh Street	132	244	84.8%	75	150	100.0%	120	185	54.2%
Park West	234	318	35.9%	56			114		
Freedom Tower									
Government Center	1,014	1,606	58.4%	721	962	33.4%	1,052	1,615	53.5%
Miami Avenue	208	227	9.1%	134	131	-2.2%	189	180	-4.8%
Third Street	165	186	12.7%	184	174	-5.4%	143	244	70.6%
Knight Center	247	355	43.7%	166	203	22.3%	229	350	52.8%
Bayfront Park	670	1,509	125.2%	708	1,000	41.2%	856	1,470	71.7%
First Street	587	790	34.6%	371	428	15.4%	578	760	31.5%
College/Bayside	514	865	68.3%	362			533		
College North	195	386	97.9%	75	285	280.0%	134	397	196.3%
Wilkie D. Ferguson	247	647	161.9%	176	342	94.3%	249	640	157.0%
Riverwalk	166	424	155.4%	123	358	191.1%	157	511	225.5%
Fifth Street	259	299	15.4%	111	163	46.8%	134	238	77.6%
Eighth Street	517	1,221	136.2%	338	670	98.2%	703	1,382	96.6%
Tenth Street	407	521	28.0%	158	235	48.7%	246	540	119.5%
Brickell	1,205	1,640	36.1%	715	982	37.3%	968	1,633	68.7%
Financial District	327	614	87.8%	195	289	48.2%	257	631	145.5%
TOTAL	8,331	13,990	67.9%	5,358	7,894	47.3%	7,671	13,120	71.0%

METROMOVER CUMULATIVE PERCENTAGE RIDERSHIP SHARE



TOTAL MONTHLY AND AVERAGE WEEKDAY RIDERSHIP YEAR OVER YEAR COMPARISON CHARTS – METROMOVER



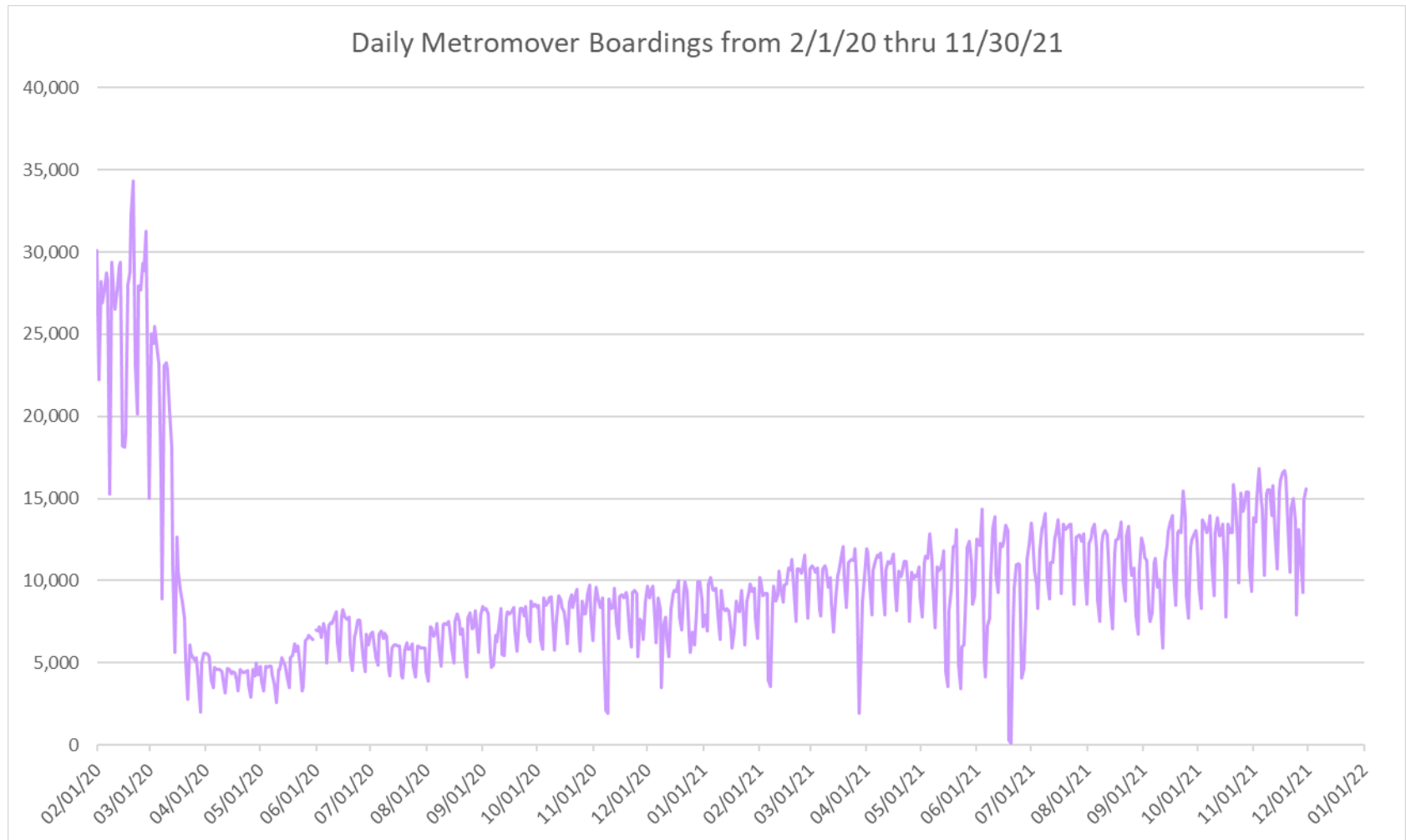
**“TOP 5 / BOTTOM 5” MOVER STATIONS AVERAGE WEEKDAY RIDERSHIP PERFORMANCE
YEAR OVER YEAR COMPARISONS**

Station	Nov-21	Nov-20	Absolute Delta (1)	Percent Delta
Government Center	2,079	1,206	873	72.3%
Omni	1,341	654	687	105.1%
Bayfront Park	1,556	869	687	79.1%
Eighth Street	1,159	492	668	135.8%
Brickell	1,801	1,159	642	55.4%
Miami Avenue	248	213	35	16.2%
Third Street	253	172	81	46.9%
Eleventh Street	226	133	93	70.0%
Knight Center	403	269	135	50.2%
Museum Park	210	75	136	182.2%

(1) Averages rounded to the nearest boarding.

(†) All Metromover stations reporting YOY gains in November 2021, as November 2020 showed clear reduction effects on ridership from the SARS-CoV-2 pandemic.

DAILY METROMOVER RIDERSHIP SINCE FEBRUARY 1, 2020



- (1) National Emergency was declared on 3/13/20 as a result of the SARS-CoV-2 pandemic.
- (2) There was no Metrobus, Metrorail and Metromover service on 5/31/20, as a safety precaution.
- (3) The dip at the start of the second week of November 2020 is due to Hurricane Eta; these are *raw data* from the UTA contractor APC system. Other more recent dips are due to various station closures (mostly on weekends) for system maintenance purposes.
- (4) Periodic (weekly) variations are prominent, since weekday ridership is almost always significantly higher than weekend or holiday ridership.

Special Transportation Services

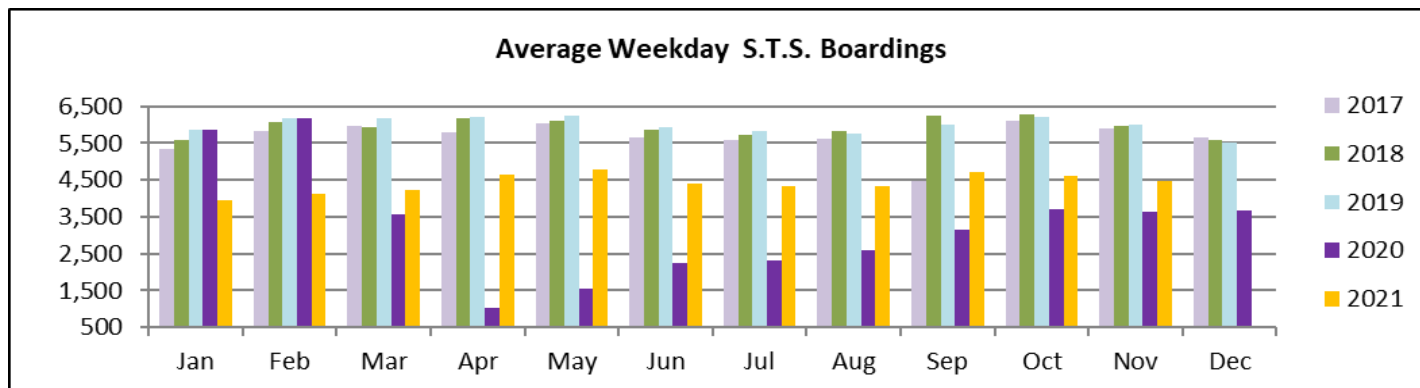
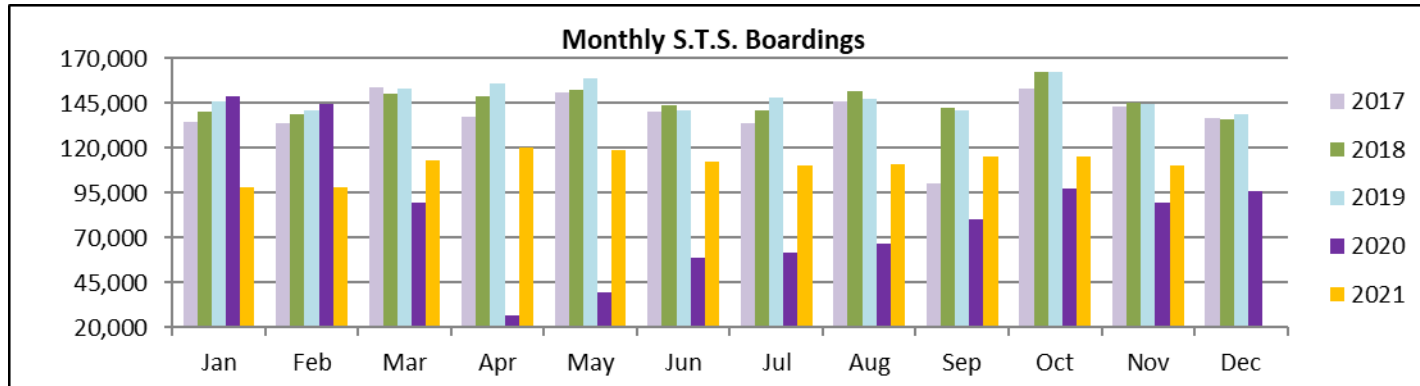


STS MONTHLY AND AVERAGE DAILY BOARDINGS **November 2021**

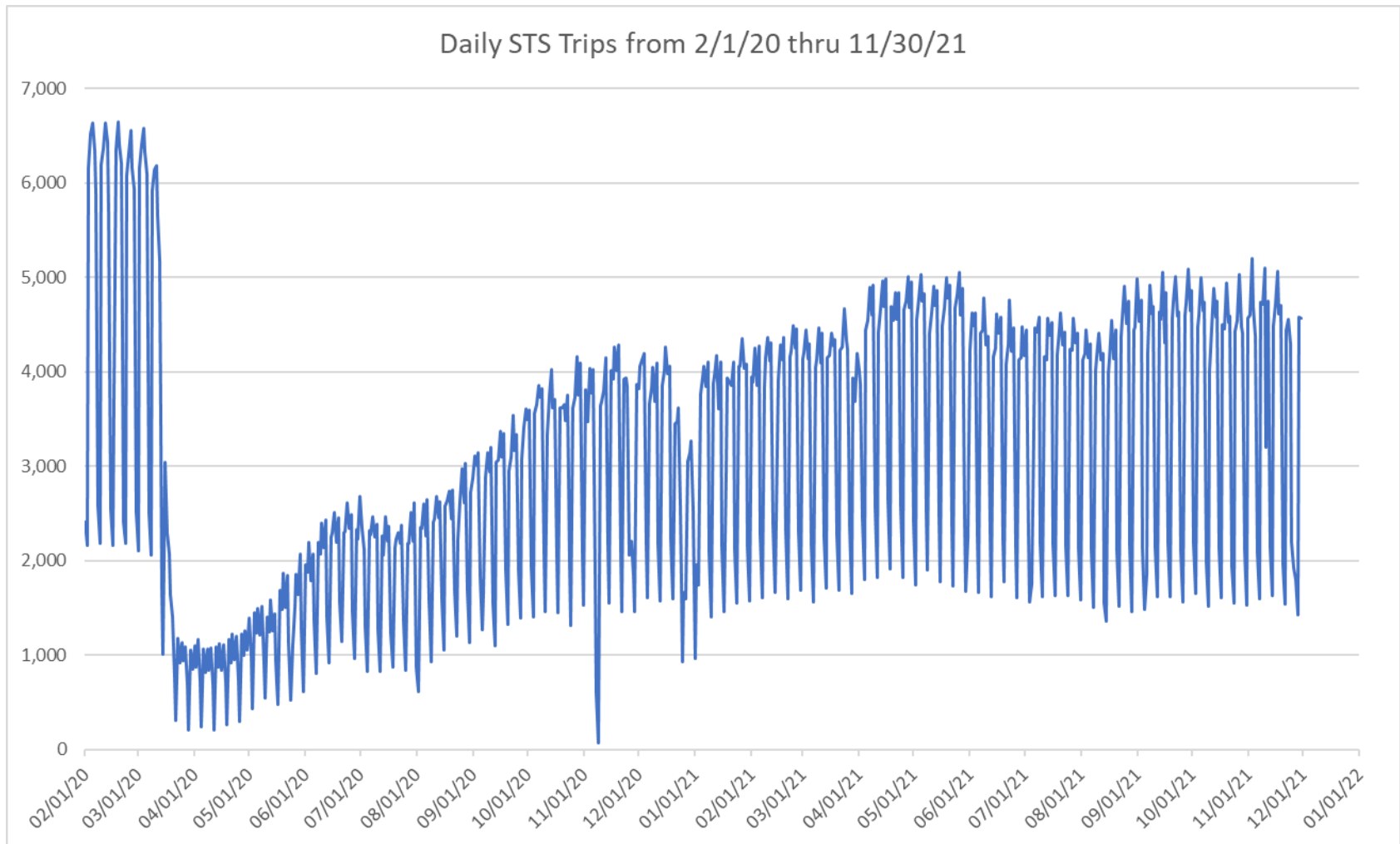
Measure	timeline	Ambulatory	Wheelchair	Total Clients (*)
Average Weekday	Nov-21	3,664	808	4,472
Average Saturday	Nov-21	1,607	387	1,995
Average Sunday	Nov-21	1,337	342	1,680
Total Monthly	Nov-21	90,067	20,222	110,289
Average Weekday	Nov-20	3,007	631	3,638
Average Saturday	Nov-20	1,631	359	1,990
Average Sunday	Nov-20	1,233	213	1,445
Total Monthly	Nov-20	74,063	15,324	89,387
Average Weekday	Nov-19	4,832	1,162	5,993
Average Saturday	Nov-19	1,983	569	2,553
Average Sunday	Nov-19	1,754	594	2,347
Total Monthly	Nov-19	115,320	29,046	144,366
% Change Current vs. Nov 2020 Weekday		21.9%	28.1%	22.9%
% Change Current vs. Nov 2020 Saturday		-1.4%	7.9%	0.3%
% Change Current vs. Nov 2020 Sunday		8.5%	61.0%	16.2%
% Change Current vs. Nov 2020 Month Total		21.6%	32.0%	23.4%
% Change Current vs. Nov 2019 Weekday		-24.2%	-30.5%	-25.4%
% Change Current vs. Nov 2019 Saturday		-19.0%	-32.0%	-21.9%
% Change Current vs. Nov 2019 Sunday		-23.8%	-42.3%	-28.4%
% Change Current vs. Nov 2019 Month Total		-21.9%	-30.4%	-23.6%

(*) Trip count data provided by STS contractor.

TOTAL MONTHLY AND AVERAGE WEEKDAY RIDERSHIP YEAR OVER YEAR COMPARISON CHARTS – SPECIAL TRANSPORTATION SERVICES (S.T.S.)

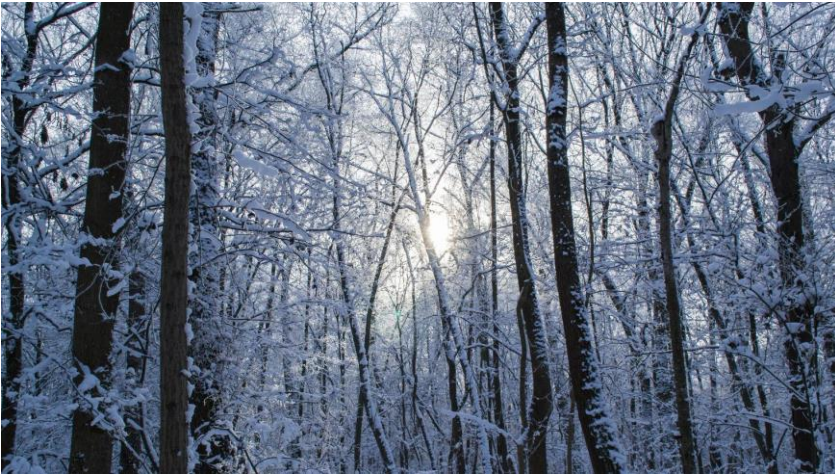


DAILY STS RIDERSHIP SINCE FEBRUARY 1, 2020

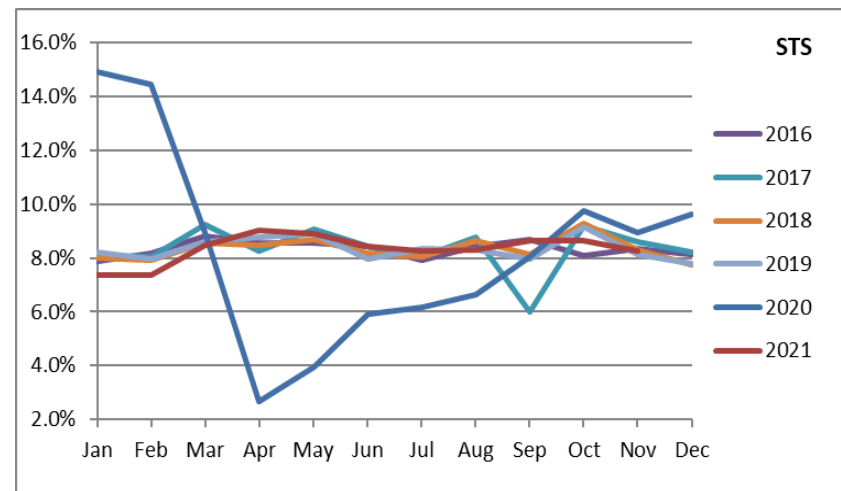
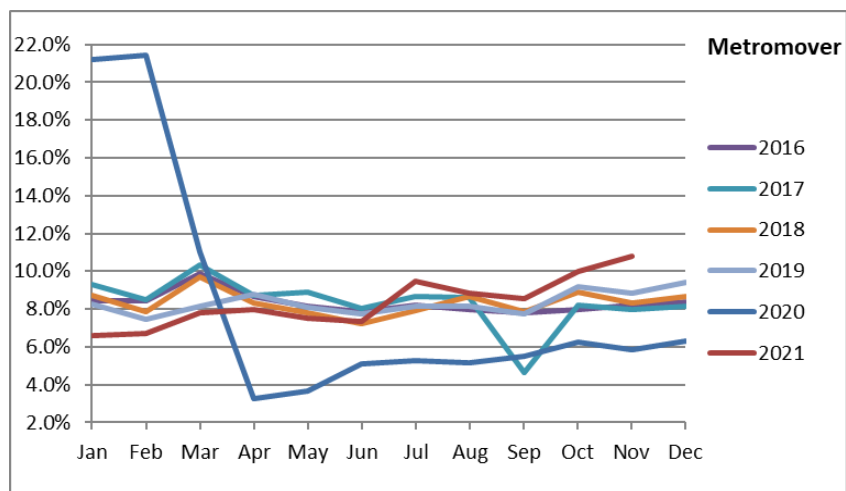
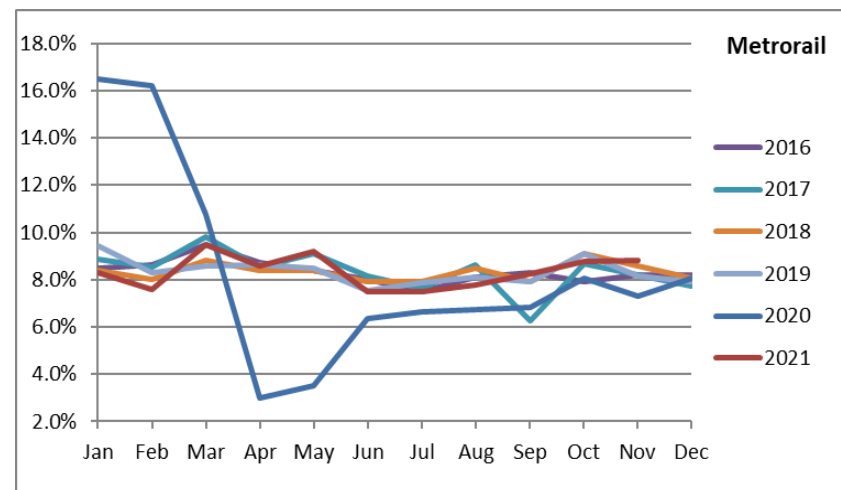
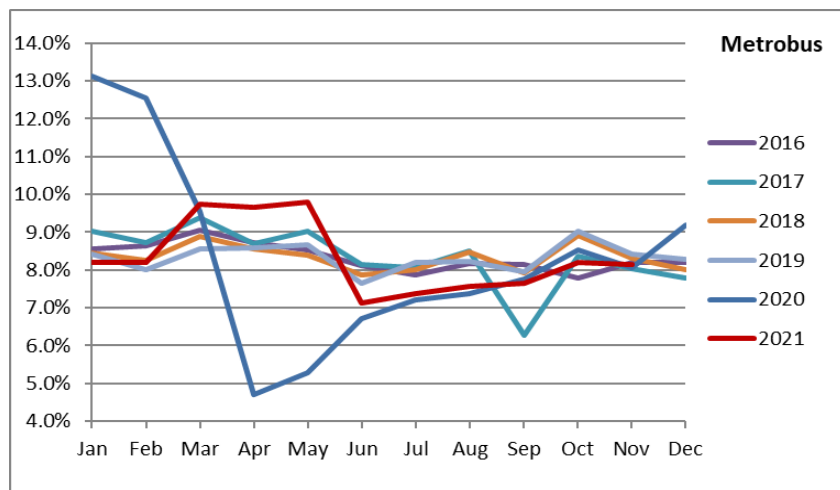


- (1) National Emergency was declared on 3/13/20 as a result of the SARS-CoV-2 pandemic.
- (2) The dip at the start of the second week of November 2020 is due to Hurricane Eta.
- (3) Periodic (weekly) variations are prominent, since weekday ridership is almost always significantly higher than weekend or holiday ridership.

Ridership Seasonality



RIDERSHIP SEASONALITY – PERCENT RIDERSHIP SHARE BY MONTH AND CALENDAR YEAR FOR EACH MODE



Note: the prominent dips seen in the fall of 2017 and beginning in the spring of 2020 are due to Hurricane Irma and the SARS-CoV-2 pandemic, respectively. Reductions in Bus and Rail ridership share seen beginning in June 2021 are due to reinstatement of fares as well changes in reporting tools and datasets, as discussed earlier in this report.