



TRANSPORTATION AND PUBLIC WORKS

RIDERSHIP TECHNICAL REPORT

Division of Performance and Materials Management



December 2021

Table of Contents

<i>Table of Contents</i>	2-3
All Modes Overview	4
Total Monthly Weekday, Saturday and Sunday Monthly Boardings By Mode	5
Average Weekday, Saturday and Sunday Boardings by Mode	6
Metrobus Total Monthly Ridership Comparisons by Fiscal Year	7
Metrorail Total Monthly Ridership Comparisons by Fiscal Year	8
Metromover Total Monthly Ridership Comparisons by Fiscal Year	9
STS Total Monthly Ridership Comparisons by Fiscal Year	10
All-Modes Combined Total Monthly Ridership Comparisons By Fiscal Year	11
All Modes Combined Total Monthly and Average Weekday Ridership – Year over Year Comparison Charts	12
Average Weekday Ridership – Modal Splits	13
Daily Ridership for All Modes Combined since February 1, 2020	14
 Metrobus	 15
Metrobus Average Weekday Boardings by Route	16-18
Metrobus Average Saturday Boardings by Route	19-20
Metrobus Average Sunday Boardings by Route	21-22
Metrobus Monthly Total Boardings by Route	23-25
Metrobus Holiday Boardings by Route	26-27
Year-over-Year Bus Ridership by Route Service Type	28-29
Bus Routes as Ranked by Percentage of Average Weekday Ridership	30
Metrobus Cumulative Percentage Average Weekday Ridership Share by Route (Top 75%)	31
Total Monthly and Average Weekday Bus Ridership – Year over Year Comparison Charts	32
Bus “Top 5 / Bottom 5” Routes Average Weekday Ridership Performance	33
Daily Metrobus Ridership since February 1, 2020	34
Metrobus Parking Patronage Summary	35

Table of Contents (continued)

Metrorail	36
Metrorail Average Weekday Boardings by Station	37
Metrorail Average Saturday Boardings by Station	38
Metrorail Average Sunday Boardings by Station	39
Metrorail Total Monthly Boardings by Station	40
Metrorail Holiday Boardings	41
Metrorail Cumulative Percentage Average Weekday Ridership Share	42
Total Monthly and Average Weekday Rail Ridership – Year over Year Comparison Charts	43
“Top 5 / Bottom 5” Stations Average Weekday Ridership Performance	44
Daily Metrorail Ridership since February 1, 2020	45
Metrorail Parking Patronage Summary	46
 Metromover	 47
Monthly and Average Daily Mover Boardings by Station	48
Metromover Holiday Boardings by Station	49
Metromover Cumulative Percentage Average Weekday Ridership Share	50
Total Monthly and Average Weekday Mover Ridership – Year over Year Comparison Charts	51
“Top 5 / Bottom 5” Stations Average Weekday Ridership Performance	52
Daily Metromover Ridership since February 1, 2020	53
 Special Transportation Services (STS)	 54
STS Monthly and Average Daily Boardings	55
Total Monthly and Average Weekday STS Ridership – Year over Year Comparison Charts	56
Daily STS Ridership since February 1, 2020	57
 Ridership Seasonality	 58
Ridership Seasonality – Percent Ridership Share by Month and Calendar year for Each Mode	59

All Modes Overview



TOTAL MONTHLY WEEKDAY, SATURDAY AND SUNDAY BOARDINGS BY MODE December 2021

TRAVEL MODE	MONTH'S TOTAL WEEKDAYS RIDERSHIP	MONTH'S TOTAL SATURDAYS RIDERSHIP	MONTH'S TOTAL SUNDAYS RIDERSHIP	TOTAL MONTHLY RIDERSHIP	% CHANGE vs Dec 2020 TOTAL MONTH RIDERSHIP
METROBUS (1)	2,631,587	265,376	226,920	3,123,883	3.4%
METRORAIL (2)	745,480	61,751	53,205	860,436	11.9%
METROMOVER (3)	354,767	50,184	45,369	450,320	79.4%
STS PARATRANSIT (4)	90,956	7,299	6,241	104,496	8.4%
TOTAL	3,822,790	384,610	331,735	4,539,135	9.7%

(*) Total weekday ridership includes Friday, December 24, 2021 (Christmas Eve holiday) and Friday, December 31, 2021 (New Year's Eve holiday). Ridership numbers for the two dates were respectively as follows:

Metrobus	82,055	and	75,821
Metrorail	16,903		18,307
Metromover	11,024		16,007
STS	2,367		1,846

- (1) Metrobus fares resumed on June 1, 2021, following a 14-month period of fare-free rides as a result of the SARS-CoV-2 pandemic. The NextFare System farebox data replaced the bus automatic passenger counter data as ridership data of record starting on that date.
- (2) Metrorail fares resumed on June 1, 2021, following a 14-month period of fare-free rides as a result of the SARS-CoV-2 pandemic. The NextFare System faregate data replaced the video data as ridership data of record starting on that date.
- (3) Beginning March 13, 2020 (day of National Emergency Declaration due to SARS-CoV-2 pandemic), only raw data from Metromover automatic passenger counters is reported; no estimates are performed after March 13, 2020.
- (4) Paratransit ridership data as reported by the contractor.

AVERAGE WEEKDAY, SATURDAY AND SUNDAY BOARDINGS BY MODE
December 2021

Travel Mode	Average Weekday	Average Saturday	Average Sunday	% Change Dec 2020 Weekday	% Change Dec 2020 Saturday	% Change Dec 2020 Sunday
METROBUS	114,511	66,354	56,810	2.8%	-11.4%	3.8%
METRORAIL	33,822	15,438	13,301	16.2%	-13.4%	0.1%
METROMOVER	16,572	13,350	12,100	81.7%	70.7%	81.6%
STS PARATRANSIT	3,955	1,825	1,560	7.7%	-11.4%	6.7%
Totals (1)	168,860	96,966	83,771	10.2%	-5.5%	10.0%

(*) Average weekday ridership includes Christmas Eve and New Year's Eve for Metrobus and STS but excludes it for Metrorail and Metromover.

(**) Average ridership is calculated and published only for those days and stations with nontrivial amounts of reported data.

METROBUS TOTAL MONTHLY RIDERSHIP COMPARISONS BY FISCAL YEAR

Bus	FY 18	FY 19	Variance 18 to 19	FY 20	Variance 19 to 20	FY 21	FY 22	Variance 21 to 22	Variance 19 to 22	Variance 18 to 22
Oct	4,709,590	4,554,886	-3.3%	4,507,012	-1.1%	2,805,139	3,081,157	9.8%	-32.4%	-34.6%
Nov	4,522,250	4,245,535	-6.1%	4,197,225	-1.1%	2,651,290	3,056,726	15.3%	-28.0%	-32.4%
Dec	4,380,099	4,081,581	-6.8%	4,126,990	1.1%	3,022,530	3,123,883	3.4%	-23.5%	-28.7%
Jan	4,307,001	4,195,911	-2.6%	4,316,998	2.9%	3,082,746				
Feb	4,208,811	3,994,019	-5.1%	4,123,083	3.2%	3,076,966				
Mar	4,534,564	4,266,768	-5.9%	3,136,162	-26.5%	3,660,639				
Apr	4,360,997	4,291,135	-1.6%	1,544,316	-64.0%	3,625,048				
May	4,277,628	4,330,922	1.2%	1,734,609	-59.9%	3,683,343				
Jun	4,009,340	3,823,863	-4.6%	2,210,725	-42.2%	2,672,570				
Jul	4,080,664	4,094,906	0.3%	2,366,749	-42.2%	2,769,907				
Aug	4,326,980	4,109,613	-5.0%	2,422,014	-41.1%	2,843,552				
Sep	4,041,992	3,971,220	-1.8%	2,546,923	-35.9%	2,877,110				
FY Total	51,759,916	49,960,359	-3.5%	37,232,806	-25.5%	36,770,840				

METRORAIL TOTAL MONTHLY RIDERSHIP COMPARISONS BY FISCAL YEAR

Rail	FY 18	FY 19	Variance 18 to 19	FY 20	Variance 19 to 20	FY 21	FY 22	Variance 21 to 22	Variance 19 to 22	Variance 18 to 22
Oct	1,708,564	1,757,225	2.8%	1,643,166	-6.5%	769,525	844,383	9.7%	-51.9%	-50.6%
Nov	1,609,888	1,656,929	2.9%	1,469,448	-11.3%	699,492	850,881	21.6%	-48.6%	-47.1%
Dec	1,517,341	1,553,804	2.4%	1,433,928	-7.7%	769,194	860,436	11.9%	-44.6%	-43.3%
Jan	1,615,576	1,708,695	5.8%	1,576,340	-7.7%	799,119				
Feb	1,545,581	1,501,458	-2.9%	1,549,118	3.2%	730,792				
Mar	1,700,714	1,554,851	-8.6%	1,027,319	-33.9%	917,097				
Apr	1,619,890	1,559,446	-3.7%	287,803	-81.5%	827,414				
May	1,618,504	1,531,597	-5.4%	337,696	-78.0%	887,111				
Jun	1,524,311	1,359,966	-10.8%	608,758	-55.2%	723,469				
Jul	1,527,380	1,419,158	-7.1%	632,964	-55.4%	722,159				
Aug	1,632,471	1,463,646	-10.3%	641,275	-56.2%	749,578				
Sep	1,530,088	1,427,726	-6.7%	654,244	-54.2%	795,749				
Total	19,150,308	18,494,501	-3.4%	11,862,059	-35.9%	9,390,699				

METROMOVER TOTAL MONTHLY RIDERSHIP COMPARISONS BY FISCAL YEAR

Mover	FY 18	FY 19	Variance 18 to 19	FY 20	Variance 19 to 20	FY 21	FY 22	Variance 21 to 22	Variance 19 to 22	Variance 18 to 22
Oct	751,323	790,533	5.2%	831,234	5.1%	250,044	389,065	55.6%	-50.8%	-48.2%
Nov	729,519	735,198	0.8%	799,632	8.8%	232,422	418,929	80.2%	-43.0%	-42.6%
Dec	748,797	767,239	2.5%	849,832	10.8%	251,019	450,320	79.4%	-41.3%	-39.9%
Jan	772,122	746,728	-3.3%	847,773	13.5%	255,968				
Feb	698,107	675,160	-3.3%	855,398	26.7%	260,332				
Mar	859,143	737,814	-14.1%	441,200	-40.2%	302,502				
Apr	740,036	795,696	7.5%	130,549	-83.6%	310,772				
May	694,106	734,645	5.8%	146,454	-80.1%	292,922				
Jun	641,675	701,318	9.3%	203,637	-71.0%	286,145				
Jul	700,462	739,814	5.6%	210,596	-71.5%	368,847				
Aug	768,728	739,785	-3.8%	205,995	-72.2%	344,319				
Sep	698,505	699,879	0.2%	219,696	-68.6%	331,915				
Total	8,802,523	8,863,809	0.7%	5,741,996	-35.2%	3,487,207				

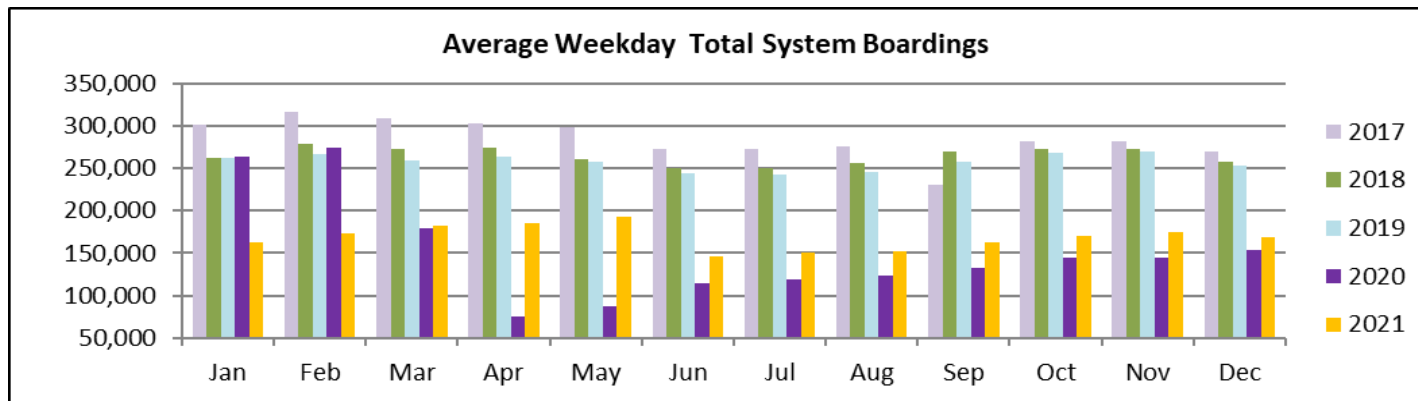
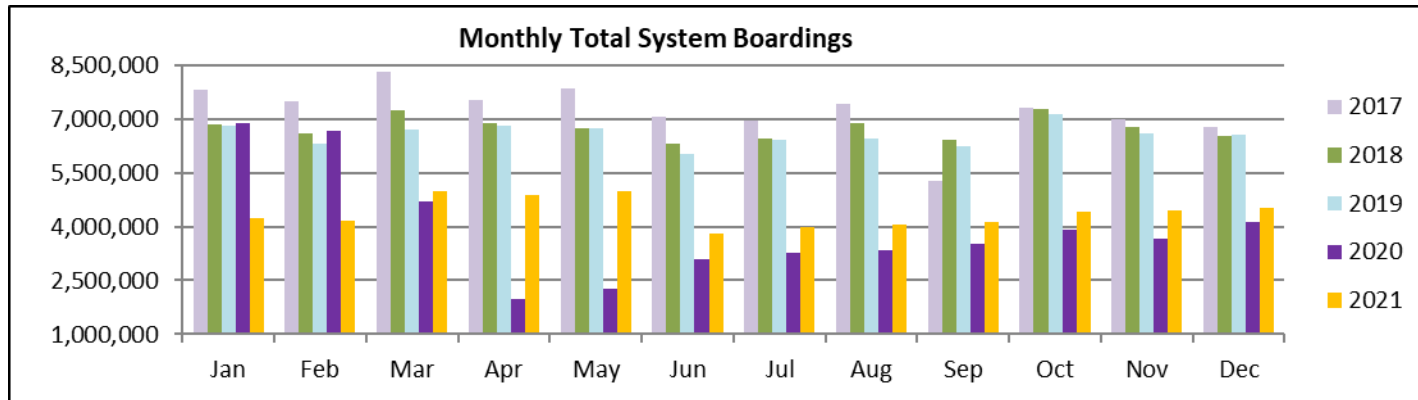
SPECIAL TRANSPORTATION SERVICES (STS) TOTAL MONTHLY RIDERSHIP COMPARISONS BY FISCAL YEAR

STS	FY 18	FY 19	Variance 18 to 19	FY 20	Variance 19 to 20	FY 21	FY 22	Variance 21 to 22	Variance 19 to 22	Variance 18 to 22
Oct	153,409	162,564	6.0%	162,704	0.1%	97,388	115,122	18.2%	-29.2%	-25.0%
Nov	143,375	145,653	1.6%	144,366	-0.9%	89,387	110,289	23.4%	-24.3%	-23.1%
Dec	136,955	136,110	-0.6%	138,642	1.9%	96,366	104,496	8.4%	-23.2%	-23.7%
Jan	140,042	146,268	4.4%	149,114	1.9%	97,928				
Feb	139,032	141,396	1.7%	144,392	2.1%	98,285				
Mar	150,384	153,191	1.9%	89,634	-41.5%	112,930				
Apr	148,879	155,808	4.7%	26,877	-82.7%	120,122				
May	152,164	158,665	4.3%	39,654	-75.0%	118,636				
Jun	143,653	141,320	-1.6%	59,093	-58.2%	112,397				
Jul	141,020	148,232	5.1%	61,765	-58.3%	110,059				
Aug	151,750	147,331	-2.9%	66,563	-54.8%	110,766				
Sep	142,360	141,387	-0.7%	80,346	-43.2%	115,406				
Total	1,743,023	1,777,925	2.0%	1,163,150	-34.6%	1,279,670				

ALL-MODES COMBINED TOTAL MONTHLY RIDERSHIP COMPARISONS BY FISCAL YEAR

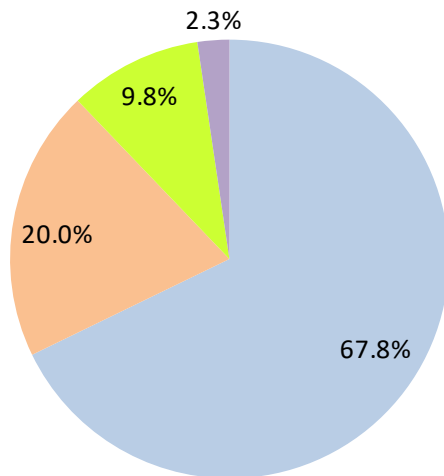
All Modes Month	Variances										
	FY 18	FY 19	FY 20	FY 21	FY 22	18 TO 19	19 TO 20	20 TO 21	21 TO 22	19 TO 22	18 TO 22
Oct	7,322,886	7,265,208	7,144,116	3,922,096	4,429,727	-0.8%	-1.7%	-45.1%	12.9%	-39.0%	-39.5%
Nov	7,005,032	6,783,315	6,610,671	3,672,591	4,436,825	-3.2%	-2.5%	-44.4%	20.8%	-34.6%	-36.7%
Dec	6,783,192	6,538,734	6,549,392	4,139,109	4,539,135	-3.6%	0.2%	-36.8%	9.7%	-30.6%	-33.1%
Jan	6,834,741	6,797,602	6,890,225	4,235,761		-0.5%	1.4%	-38.5%			
Feb	6,591,531	6,312,033	6,671,991	4,166,375		-4.2%	5.7%	-37.6%			
Mar	7,244,805	6,712,624	4,694,315	4,993,168		-7.3%	-30.1%	6.4%			
Apr	6,869,802	6,802,085	1,989,545	4,883,356		-1.0%	-70.8%	145.5%			
May	6,742,402	6,755,829	2,258,413	4,982,012		0.2%	-66.6%	120.6%			
Jun	6,318,979	6,026,467	3,082,213	3,794,581		-4.6%	-48.9%	23.1%			
Jul	6,449,526	6,402,110	3,272,074	3,970,972		-0.7%	-48.9%	21.4%			
Aug	6,879,929	6,460,375	3,335,847	4,048,215		-6.1%	-48.4%	21.4%			
Sep	6,412,945	6,240,212	3,501,209	4,120,180		-2.7%	-43.9%	17.7%			
FY Total	81,455,770	79,096,594	56,000,011	50,928,416		-2.9%	-29.2%	-9.1%			

TOTAL MONTHLY AND AVERAGE WEEKDAY RIDERSHIP YEAR OVER YEAR COMPARISON CHARTS – ALL MODES COMBINED



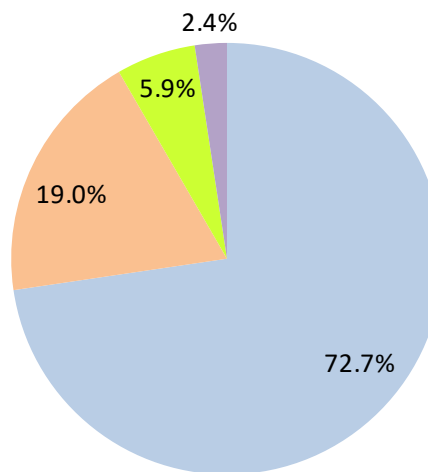
AVERAGE WEEKDAY RIDERSHIP - MODAL SPLITS

December 2021



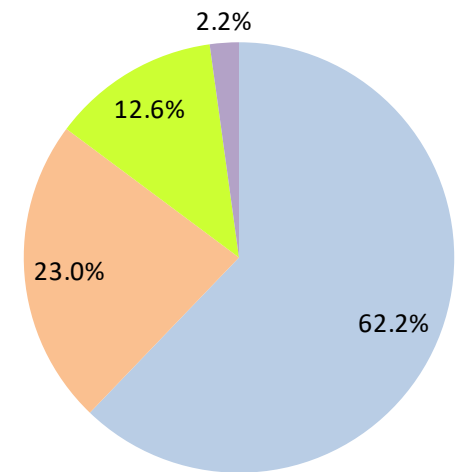
boardings

December 2020



boardings

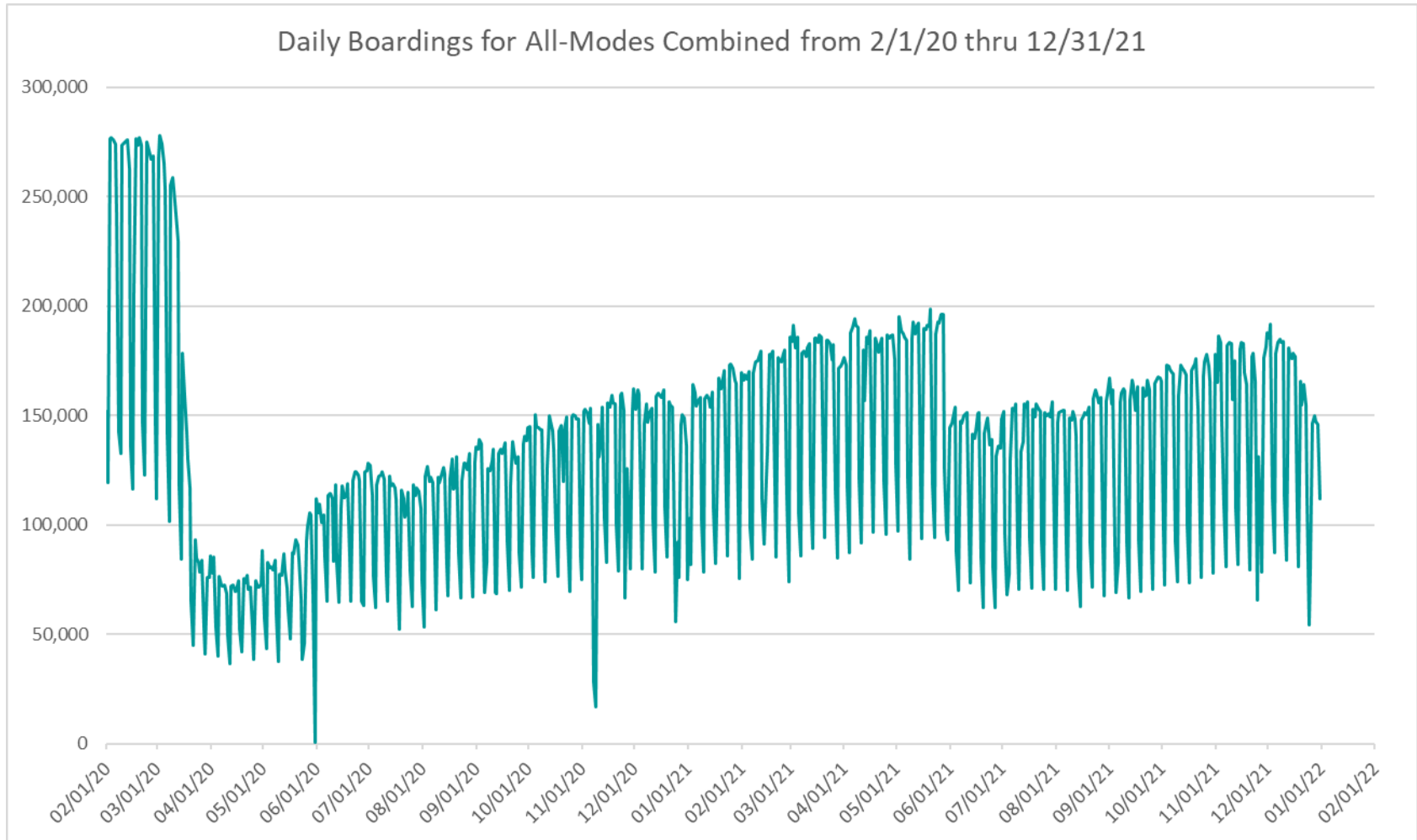
December 2019



boardings



DAILY RIDERSHIP FOR ALL MODES COMBINED SINCE FEBRUARY 1, 2020



- (1) National Emergency was declared on 3/13/20 as a result of the SARS-CoV-2 pandemic.
- (2) There was no Metrobus, Metrorail and Metromover service on 5/31/20, as a safety precaution.
- (3) The dip at the start of the second week of November 2020 is due to Hurricane Eta.
- (4) The reduction seen beginning 6/1/21 is partly due to the resumption of fares for bus and rail, and partly the result of having resumed reporting Cubic farebox data rather than bus APC counts, as well as Cubic rail faregate counts instead of video camera counts on that date.
- (5) Periodic (weekly) variations are prominent, since weekday ridership is almost always significantly higher than weekend or holiday ridership.

Metrobus



METROBUS AVERAGE WEEKDAY BOARDINGS BY ROUTE (†)

Route weekdays	Average Weekday	Average Weekday	Percent Change	Average Weekday	Percent Change	Average Weekday	Percent Change	Average Weekday	Percent Change
	Dec-21	Dec-20	YOY	Feb-20	Current vs Feb-20	Nov-21	MOM	Dec-19	YO2Y
1 (*)	158	176	-9.9%	184	-14.1%	148	7.0%	304	-48.0%
2	1,789	1,873	-4.5%	3,102	-42.3%	2,211	-19.1%	2,312	-22.6%
3	3,487	3,713	-6.1%	5,137	-32.1%	4,174	-16.5%	4,834	-27.9%
7	2,421	1,937	25.0%	3,501	-30.9%	2,704	-10.5%	2,974	-18.6%
8	3,137	3,303	-5.0%	3,909	-19.7%	3,677	-14.7%	3,455	-9.2%
9	4,072	4,723	-13.8%	5,528	-26.3%	4,743	-14.1%	5,192	-21.6%
10	1,545	1,302	18.7%	2,482	-37.8%	1,522	1.5%	2,077	-25.6%
11	5,823	5,409	7.7%	7,292	-20.2%	6,886	-15.4%	6,558	-11.2%
12	1,763	2,034	-13.3%	2,779	-36.6%	1,883	-6.4%	2,471	-28.6%
16	1,328	1,186	12.0%	1,862	-28.7%	1,215	9.3%	1,770	-24.9%
17	2,486	2,383	4.3%	3,878	-35.9%	2,417	2.9%	3,542	-29.8%
19	813	988	-17.7%	1,542	-47.3%	843	-3.5%	1,312	-38.0%
21	1,192	1,526	-21.9%	1,817	-34.4%	1,145	4.1%	1,775	-32.8%
22	2,377	2,355	0.9%	3,640	-34.7%	2,375	0.1%	3,425	-30.6%
24 - Coral Way Limited	1,263	1,327	-4.9%	1,340	-5.8%	876	44.0%	1,650	-23.5%
27	4,581	4,924	-7.0%	6,972	-34.3%	4,982	-8.0%	6,376	-28.2%
29 (*)	337	345	-2.2%	534	-37.0%	310	8.5%	652	-48.4%
31 - BUSWAY LOCAL	625	541	15.6%	1,089	-42.6%	656	-4.8%	1,040	-39.9%
32	1,545	1,744	-11.4%	2,390	-35.4%	1,425	8.4%	2,166	-28.7%
33	1,070	1,020	4.9%	1,687	-36.6%	1,114	-4.0%	1,604	-33.3%
34 EXPRESS	820	794	3.2%	2,008	-59.2%	710	15.4%	1,774	-53.8%
35	1,416	1,627	-13.0%	2,421	-41.5%	1,658	-14.6%	2,335	-39.4%
36	1,863	1,966	-5.2%	2,536	-26.5%	1,836	1.5%	2,408	-22.6%
37	2,427	2,385	1.8%	3,273	-25.8%	2,709	-10.4%	3,085	-21.3%
38	3,705	4,200	-11.8%	6,361	-41.8%	4,298	-13.8%	6,285	-41.1%
39 EXPRESS	247	194	27.4%	893	-72.3%	192	28.4%	795	-69.0%
40	1,208	989	22.2%	1,772	-31.8%	1,203	0.4%	1,558	-22.5%
42	616	519	18.7%	820	-24.9%	666	-7.5%	805	-23.4%
46 - LIBERTY CITY CONN. (*)	15	20	-25.3%	41	-64.1%	19	-21.3%	51	-71.4%
51 - FLAGLER MAX	2,345	1,915	22.4%	3,109	-24.6%	2,546	-7.9%	2,938	-20.2%
52	793	801	-1.0%	1,261	-37.1%	1,081	-26.6%	1,131	-29.9%
54	1,927	2,195	-12.2%	2,940	-34.5%	2,063	-6.6%	2,828	-31.9%
55 MARLINS SHUTTLE									
56 (*)	192	159	21.0%	354	-45.7%	244	-21.2%	374	-48.7%
57	264	241	9.7%	433	-39.1%	259	1.7%	382	-30.9%
62	1,199	1,600	-25.1%	1,815	-34.0%	1,267	-5.4%	1,792	-33.1%
71 (*)	435	369	17.9%	711	-38.7%	438	-0.5%	628	-30.6%
72 (*)	455	371	22.7%	781	-41.8%	479	-5.1%	703	-35.3%

(†) In this table and those which follow, "YOY" stands for "year-over-year", "MOM" for "month-over-month" and "YO2Y" for "year over two years", i.e., current month vs 12 months prior, one month prior, and 24 months prior, respectively.

(*) Contracted routes

(**) Due to effects from the SARS-CoV-2 pandemic; rides were fare-free beginning March 22, 2020; fares were reinstated on June 1, 2021, in part accounting for the drop in ridership from May 2021.

METROBUS AVERAGE WEEKDAY BOARDINGS BY ROUTE

Route weekdays	Average Weekday	Average Weekday	Percent Change	Average Weekday	Percent Change	Average Weekday	Percent Change	Average Weekday	Percent Change
	Dec-21	Dec-20	YOY	Feb-20	Current vs Feb-20	Nov-21	MOM	Dec-19	YO2Y
73	1,702	1,255	35.7%	2,124	-19.9%	1,696	0.4%	1,837	-7.4%
75	850	835	1.8%	1,429	-40.5%	877	-3.1%	1,426	-40.4%
77	5,576	5,655	-1.4%	7,129	-21.8%	5,644	-1.2%	7,066	-21.1%
79 STREET MAX	250			361	-30.7%	256	-2.2%	388	-35.5%
82 - WESTCHESTER CIRC. (*)	33	24	36.7%	62	-46.8%	22	47.3%	66	-50.1%
87	1,091	982	11.0%	1,499	-27.2%	1,123	-2.9%	1,395	-21.8%
88	1,456	1,441	1.0%	2,076	-29.9%	2,090	-30.4%	2,023	-28.0%
93 - BISCAYNE MAX	2,175	1,354	60.7%	3,334	-34.8%	1,961	10.9%	3,171	-31.4%
95 EXPRESS	574	361	59.0%	1,690	-66.0%	378	51.8%	1,625	-64.7%
99	1,042	947	10.1%	1,473	-29.2%	1,069	-2.5%	1,367	-23.8%
101 - A (*)	143	100	42.6%	177	-19.2%	124	15.1%	171	-16.4%
102 - B	1,262	111	1040.9%	1,778	-29.0%	1,348	-6.4%	1,581	-20.2%
103 - C	227	307	-26.2%	463	-51.1%	196	15.7%	442	-48.7%
104	493	300	64.3%	837	-41.1%	555	-11.1%	800	-38.3%
105 - E	936	889	5.3%	1,287	-27.3%	921	1.6%	1,216	-23.1%
107 - G	1,181	890	32.8%	1,713	-31.0%	1,153	2.4%	1,599	-26.1%
108 - H	357	346	3.2%	473	-24.5%	326	9.5%	456	-21.7%
110 - J	1,968	1,664	18.2%	2,508	-21.6%	1,985	-0.9%	2,563	-23.2%
112 - L	6,091	7,143	-14.7%	7,636	-20.2%	6,897	-11.7%	7,458	-18.3%
113 - M	508	500	1.7%	866	-41.3%	410	23.9%	787	-35.4%
115 (*)	145	190	-23.6%	180	-19.5%	132	9.6%	165	-12.1%
119 - S	7,017	7,617	-7.9%	8,970	-21.8%	7,378	-4.9%	8,640	-18.8%
120 - BEACH MAX	4,989	4,465	11.7%	6,667	-25.2%	4,423	12.8%	6,551	-23.8%
132 TRI-RAIL (DORAL)	5	30	-82.9%	16	-67.0%	7	-28.9%	3	71.8%
135	788	727	8.4%	1,399	-43.6%	621	26.9%	1,280	-38.4%
136	115	40	185.9%	126	-9.2%	110	4.5%	118	-3.0%
137 - WEST DADE CONN.	1,139	958	18.9%	1,626	-30.0%	1,141	-0.2%	1,496	-23.9%
150 - MIAMI BEACH AIRPORT FLYER	1,339	1,026	30.5%	1,867	-28.3%	1,047	27.9%	1,667	-19.7%
155 - BISCAYNE GARDENS CIRCULATOR (*)	33	32	3.2%	44	-25.5%	30	9.6%	48	-31.9%
175 - NW MIAMI-DADE EXPRESS				33				16	
183	2,170	2,318	-6.4%	3,149	-31.1%	2,022	7.3%	3,000	-27.7%
195 EXPRESS - BROWARD BLVD				372				327	
196 EXPRESS - SHERIDAN ST				383				333	
200 - CUTLER BAY LOCAL	97	117	-17.0%	158	-38.4%	150	-35.2%	150	-35.1%
202 - LITTLE HAITI CONN. (*)	109	122	-10.9%	140	-22.0%	46	136.3%	134	-18.5%
204 KILLIAN KAT	281			1,071	-73.7%	251	12.3%	844	-66.7%

(††) Due to various communications system and process issues, the NextFare System did not capture a portion of the Cutler Bay Local ridership in December 2021.

METROBUS AVERAGE WEEKDAY BOARDINGS BY ROUTE

Route weekdays	Average Weekday	Average Weekday	Percent Change	Average Weekday	Percent Change	Average Weekday	Percent Change	Average Weekday	Percent Change
	Dec-21	Dec-20	YOY	Feb-20	Current vs Feb-20	Nov-21	MOM	Dec-19	YO2Y
207 (7st) - LITTLE HAVANA CIRC	1,064	722	47.3%	1,489	-28.6%	852	24.8%	1,532	-30.6%
208 (8st) - LITTLE HAVANA CIRC	983	816	20.4%	1,308	-24.8%	801	22.7%	1,448	-32.1%
210 - SKYLAKE CIRC (*)	299	284	5.4%	282	6.2%	261	14.6%	221	35.4%
211 - OVERTOWN CIRC. (*)	86	47	82.1%	58	47.8%	72	18.3%	72	19.7%
212 - SWEETWATER CIRC. (*)	25	16	58.7%	15	72.1%	40	-36.4%	56	-54.6%
217 - BUNCHE PARK CIRC (*)	56	57	-1.5%	97	-42.1%	63	-10.6%	69	-18.6%
238 EAST/WEST CONN.	366	302	20.9%	449	-18.6%	371	-1.5%	448	-18.4%
241 TUTTLE LIMITED	42								
246 - NIGHT OWL (*)	29	68	-57.9%	94	-69.2%	64	-54.9%	101	-71.6%
248 - PRINCETON CIRCULATOR (*)	64	66	-2.8%	135	-52.4%	57	12.2%	37	74.9%
252 - CORAL REEF MAX	512	404	26.7%	851	-39.8%	514	-0.3%	771	-33.6%
254 - BROWNSVILLE CIRC. (*)	7	13	-46.4%	19	-64.4%	6	6.2%	19	-63.5%
267 - LUDLAM LIMITED (*)	92	93	-1.4%	149	-38.4%	84	8.9%	126	-27.4%
272 SUNSET KAT (*)	269	209	28.4%	550	-51.2%	316	-15.1%	517	-48.0%
277 - 7th AVENUE MAX	417	438	-4.7%	683	-39.0%	383	8.8%	584	-28.6%
286 - NORTH POINTE CIRC. (*)	35	35	-0.7%	97	-64.3%	34	0.9%	94	-63.0%
287 - SAGA BAY MAX	175	108	61.5%	358	-51.1%	173	1.4%	312	-43.9%
288 - KENDALL CRUISER	286			762	-62.5%	213	34.6%	709	-59.7%
295 EXPRESS - BROWARD BLVD - CIVIC CENTER				233				217	
296 EXPRESS - SHERIDAN ST - CIVIC CENTER				215				196	
297-27th AVENUE ORANGE MAX	772	717	7.8%	1,356	-43.0%	688	12.3%	1,271	-39.2%
301 DADE-MONROE EXPRESS(*)	755	847	-10.8%	841	-10.2%	809	-6.6%	824	-8.3%
302 CARD SOUND EXPRESS(*)	67	78	-13.7%	86	-22.3%	67	0.3%	77	-12.9%
344 (*)	44	66	-33.8%	96	-54.3%	57	-23.1%	102	-56.8%
500	6	42	-85.4%	81	-92.5%			42	-85.3%
836 EXPRESS	109					142	-23.2%		
GREEN HILLS SHUTTLE (*)	4	6	-31.8%	9	-58.3%	5	-18.5%	8	-50.7%
KINGS CREEK SHUTTLE (*)	13	10	25.5%	13	-1.5%	9	42.2%	19	-32.6%
SIERRALAKES SHUTTLE (*)	17	17	-0.8%	45	-61.8%	19	-7.0%	26	-34.5%
ROBERT SHARP SHUTTLE (*)	22	19	14.9%	10	127.4%	23	-6.1%	6	241.1%
AHEPA SHUTTLE (*)	21	18	16.7%	21	1.2%	37	-43.2%	18	20.0%
Total	114,511	111,394	2.8%	167,711	-31.7%	119,526	-4.2%	157,487	-27.3%

(*) The following routes are entirely operated under contract: 1, 29, 46, 56, 71, 72, 82, 101-A, 115, 155, 202, 210, 211, 212, 217, 246, 248, 254, 267, 272, 286, 301, 302 and 344, although some supplemental runs may be performed by DTPW. Conversely, a few routes that are nominally run by DTPW may have a few supplemental runs operated by contractors; Dade-Monroe routes 301 and 302 as well as six Lifestar routes are also under contracted operation.

(1) Includes shuttles and those routes which were not run both years.

(2) Several express routes were suspended beginning at the end of March 2020, due to the SARS-CoV-2 pandemic, while other routes had alignment and schedule modifications made to them, in an ongoing effort to optimize service delivery.

METROBUS AVERAGE SATURDAY BOARDINGS BY ROUTE

Route	Average Saturday	Average Saturday	Percent Change	Average Saturday	Percent Change	Average Saturday	Percent Change	Average Saturday	Percent Change
Saturdays	Dec-21	Dec-20	YOY	Feb-20	Current vs Feb-20	Nov-21	MOM	Dec-19	YO2Y
1 (*)	116	176	-34.1%	215	-46.0%	162	-28.5%	314	-63.1%
2	984	1,040	-5.4%	1,616	-39.1%	1,124	-12.5%	1,527	-35.6%
3	3,598	3,367	6.9%	5,229	-31.2%	3,931	-8.5%	5,322	-32.4%
7	1,342	1,388	-3.3%	1,887	-28.9%	1,630	-17.6%	1,993	-32.7%
8	1,683	2,033	-17.3%	2,027	-17.0%	1,976	-14.9%	2,047	-17.8%
9	2,160	2,901	-25.5%	3,034	-28.8%	2,772	-22.1%	3,184	-32.2%
10	1,227	1,473	-16.7%	1,896	-35.3%	1,490	-17.7%	1,779	-31.0%
11	3,627	4,099	-11.5%	5,182	-30.0%	4,664	-22.2%	5,418	-33.1%
16	1,062	1,256	-15.5%	1,566	-32.2%	1,158	-8.3%	1,558	-31.8%
17	1,556	1,599	-2.7%	2,363	-34.2%	1,699	-8.5%	2,463	-36.8%
22	1,436	1,658	-13.3%	2,084	-31.1%	1,537	-6.6%	2,144	-33.0%
24 - Coral Way Limited	789	1,023	-22.9%	1,165	-32.3%	817	-3.5%	1,220	-35.4%
27	2,532	3,487	-27.4%	4,034	-37.2%	2,903	-12.8%	4,358	-41.9%
31 - BUSWAY LOCAL	569	833	-31.7%	896	-36.5%	617	-7.8%	832	-31.7%
32	695	1,028	-32.4%	1,029	-32.5%	746	-6.9%	1,103	-37.0%
33	650	663	-2.0%	951	-31.6%	686	-5.3%	1,050	-38.1%
35	888	1,043	-14.9%	1,372	-35.3%	979	-9.3%	1,227	-27.6%
36	1,015	1,395	-27.2%	1,289	-21.3%	1,122	-9.5%	1,399	-27.4%
37	1,451	1,519	-4.5%	2,090	-30.6%	1,504	-3.6%	2,255	-35.7%
38	2,854	2,905	-1.8%	4,715	-39.5%	3,286	-13.1%	5,108	-44.1%
40	508	479	5.9%	655	-22.5%	535	-5.1%	664	-23.5%
42	376	542	-30.8%	552	-31.9%	388	-3.3%	572	-34.4%
52	357	575	-38.0%	686	-48.0%	607	-41.2%	736	-51.6%
54	1,159	1,676	-30.9%	1,727	-32.9%	1,337	-13.3%	1,805	-35.8%
55 MARLINS SHUTTLE									
62	767	1,391	-44.9%	1,343	-42.9%	924	-17.0%	1,341	-42.8%
71 (*)	143	207	-31.0%	252	-43.2%	156	-8.3%	292	-50.9%
72 (*)	254	201	26.2%	350	-27.3%	371	-31.4%	378	-32.8%
73	807	737	9.4%	860	-6.3%	870	-7.3%	922	-12.5%
75	332	484	-31.5%	468	-29.1%	301	10.1%	471	-29.5%
77	3,351	2,773	20.8%	4,197	-20.2%	3,551	-5.6%	4,118	-18.6%
87	355	451	-21.3%	402	-11.8%	404	-12.1%	519	-31.6%
88	1,087	1,114	-2.4%	1,620	-32.9%	1,457	-25.4%	1,815	-40.1%
99	645	668	-3.5%	849	-24.1%	713	-9.6%	906	-28.8%

METROBUS AVERAGE SATURDAY BOARDINGS BY ROUTE

Route	Average Saturday	Average Saturday	Percent Change	Average Saturday	Percent Change	Average Saturday	Percent Change	Average Saturday	Percent Change
Saturdays	Dec-21	Dec-20	YOY	Feb-20	Current vs Feb-20	Nov-21	MOM	Dec-19	YO2Y
101 - A (*)	55	59	-6.0%	71	-22.0%	63	-12.0%	72	-23.5%
102 - B	645	116	455.1%	851	-24.2%	717	-10.0%	890	-27.5%
103 - C	128	274	-53.3%	315	-59.3%	124	3.4%	286	-55.2%
104	282	78	262.4%	468	-39.8%	280	0.5%	508	-44.5%
105 - E	431	561	-23.1%	619	-30.4%	521	-17.3%	689	-37.5%
107 - G	935	878	6.5%	1,066	-12.4%	843	10.8%	1,097	-14.8%
108 - H	235	372	-36.7%	372	-36.8%	286	-17.8%	409	-42.5%
110 - J	1,387	1,715	-19.1%	1,952	-29.0%	1,399	-0.9%	1,954	-29.0%
112 - L	4,554	5,309	-14.2%	5,667	-19.6%	4,762	-4.4%	6,287	-27.6%
113 - M	376	390	-3.7%	503	-25.3%	351	7.1%	462	-18.7%
115 (*)	82	198	-58.5%	82	0.1%	98	-16.3%	79	4.8%
119 - S	5,342	5,835	-8.5%	6,861	-22.1%	5,606	-4.7%	7,379	-27.6%
120 - BEACH MAX	3,456	3,627	-4.7%	4,744	-27.2%	3,795	-9.0%	5,341	-35.3%
135	315	306	2.9%	539	-41.6%	223	41.2%	497	-36.7%
137 - WEST DADE CONN.	727	797	-8.8%	1,027	-29.2%	888	-18.2%	1,140	-36.2%
150 - MIAMI BEACH AIRPORT FLYER	1,311	912	43.8%	1,604	-18.3%	1,108	18.3%	1,572	-16.6%
183	1,250	1,436	-13.0%	1,790	-30.2%	1,366	-8.5%	1,908	-34.5%
200 - CUTLER BAY LOCAL	56	83	-32.1%	119	-53.0%	62	-8.9%	125	-55.3%
202 - LITTLE HAITI CONN. (*)	73	117	-37.1%	50	45.9%	57	27.9%	68	8.5%
207 (7st) - LITTLE HAVANA CIRC	756	946	-20.1%	1,032	-26.8%	692	9.3%	1,013	-25.3%
208 (8st) - LITTLE HAVANA CIRC	638	911	-30.0%	1,044	-39.0%	663	-3.8%	1,157	-44.9%
210 - SKYLAKE CIRC (*)	108	159	-32.1%	165	-34.7%	177	-39.1%	184	-41.3%
241 TUTTLE LIMITED	5								
246 - NIGHT OWL (*)	35	43	-18.6%	84	-58.5%	54	-34.6%	95	-63.0%
252 - CORAL REEF MAX	224	216	3.9%	302	-25.8%	180	24.8%	322	-30.5%
286 - NORTH POINTE CIRC. (*)	32	32	0.0%	41	-22.2%	42	-24.0%	66	-51.7%
301 DADE-MONROE EXPRESS(*)	658	909	-27.6%	801	-17.9%	810	-18.8%	866	-24.1%
302 CARD SOUND EXPRESS(*)	31	55	-43.4%	57	-44.8%	44	-28.2%	64	-50.8%
338 - WEEKEND EXPRESS	126	105	19.2%	237	-47.0%	219	-42.6%	231	-45.7%
500	7	57	-88.6%	70	-90.7%			44	-85.2%
12/21 WEEKEND INTERL.	1,677	2,147	-21.9%	2,528	-33.7%	1,830	-8.3%	2,653	-36.8%
FEDERATION GARDENS SHUTTLE (*)	24	13	89.3%	28	-16.7%	22	10.1%	26	-7.2%
Total	66,354	74,861	-11.4%	93,742	-29.2%	73,705	-10.0%	98,366	-32.5%

METROBUS AVERAGE SUNDAY BOARDINGS BY ROUTE

Route	Average Sunday	Average Sunday	Percent Change	Average Sunday	Percent Change	Average Sunday	Percent Change	Average Sunday	Percent Change
Sundays	Dec-21	Dec-20	YOY	Feb-20	Current vs Feb-20	Nov-21	MOM	Dec-19	YO2Y
1 (*)	137	138	-1.0%	201	-31.9%	126	8.2%	272	-49.6%
2	837	575	45.5%	1,335	-37.3%	936	-10.5%	1,003	-16.6%
3	3,355	2,869	16.9%	4,353	-22.9%	3,140	6.8%	4,202	-20.2%
7	1,118	1,069	4.5%	1,654	-32.4%	1,148	-2.6%	1,410	-20.7%
8	1,532	1,451	5.6%	1,746	-12.3%	1,301	17.8%	1,591	-3.7%
9	1,821	1,856	-1.9%	2,549	-28.6%	1,700	7.1%	2,442	-25.4%
10	1,114	982	13.4%	1,441	-22.7%	1,169	-4.7%	1,276	-12.7%
11	3,019	2,733	10.4%	3,917	-22.9%	3,234	-6.7%	3,628	-16.8%
16	755	609	24.0%	997	-24.2%	626	20.6%	886	-14.7%
17	1,271	1,028	23.6%	1,833	-30.7%	1,277	-0.4%	1,553	-18.2%
22	1,159	987	17.5%	1,548	-25.1%	1,081	7.2%	1,478	-21.6%
24 - Coral Way Limited	784	763	2.8%	905	-13.3%	668	17.5%	935	-16.1%
27	2,149	2,421	-11.2%	2,918	-26.3%	1,977	8.7%	2,774	-22.5%
31 - BUSWAY LOCAL	426	398	6.9%	715	-40.5%	469	-9.4%	604	-29.5%
32	469	465	0.9%	772	-39.2%	412	14.0%	738	-36.4%
33	433	493	-12.3%	607	-28.7%	388	11.4%	609	-28.9%
35	736	833	-11.6%	942	-21.9%	762	-3.4%	955	-23.0%
36	808	1,068	-24.4%	1,111	-27.3%	873	-7.5%	1,012	-20.2%
37	1,310	1,356	-3.4%	1,739	-24.7%	1,291	1.5%	1,603	-18.3%
38	2,673	2,854	-6.3%	4,147	-35.5%	2,611	2.4%	3,808	-29.8%
40	340	318	6.9%	447	-23.9%	341	-0.2%	416	-18.3%
42	288	308	-6.7%	416	-30.9%	290	-0.9%	355	-18.9%
52	307	315	-2.6%	466	-34.1%	371	-17.3%	457	-32.7%
54	891	1,137	-21.7%	1,171	-23.9%	796	11.9%	1,226	-27.3%
55 MARLINS SHUTTLE									
62	531	769	-31.0%	891	-40.4%	573	-7.3%	877	-39.5%
71 (*)	142	149	-4.6%	162	-12.3%	115	23.3%	159	-10.8%
72 (*)	276	162	70.7%	265	4.4%	247	11.8%	252	9.6%
73	416	343	21.1%	495	-16.0%	417	-0.2%	444	-6.4%
75	242	263	-8.0%	271	-10.5%	204	18.5%	254	-4.7%
77	2,234	2,003	11.5%	2,815	-20.7%	2,231	0.1%	2,773	-19.4%
87	261	262	-0.6%	319	-18.3%	212	22.9%	285	-8.6%
88	948	816	16.2%	1,286	-26.3%	937	1.2%	1,209	-21.6%
99	516	521	-1.0%	658	-21.6%	498	3.6%	653	-21.0%

METROBUS AVERAGE SUNDAY BOARDINGS BY ROUTE

Route Sundays	Average Sunday	Average Sunday	Percent Change	Average Sunday	Percent Change	Average Sunday	Percent Change	Average Sunday	Percent Change
	Dec-21	Dec-20	YOY	Feb-20	Current vs Feb-20	Nov-21	MOM	Dec-19	YO2Y
101 - A (*)	44	35	27.9%	56	-20.3%	44	-0.3%	41	7.1%
102 - B	639	155	312.1%	717	-10.9%	521	22.7%	672	-5.0%
103 - C	100	182	-45.4%	212	-53.0%	91	9.8%	173	-42.5%
104	216	102	112.4%	317	-31.8%	180	20.3%	283	-23.5%
105 - E	517	582	-11.2%	616	-16.0%	461	12.3%	570	-9.2%
107 - G	683	552	23.8%	895	-23.7%	629	8.5%	810	-15.6%
108 - H	264	292	-9.5%	328	-19.6%	264	0.0%	331	-20.3%
110 - J	1,279	1,203	6.3%	1,638	-21.9%	1,153	10.8%	1,419	-9.9%
112 - L	3,618	3,782	-4.4%	4,804	-24.7%	3,342	8.2%	4,519	-20.0%
113 - M	369	269	37.2%	431	-14.3%	229	61.4%	418	-11.7%
115 (*)	89	162	-45.1%	80	11.3%	81	10.4%	85	4.9%
119 - S	5,618	5,606	0.2%	7,141	-21.3%	5,313	5.7%	7,293	-23.0%
120 - BEACH MAX	2,764	2,254	22.6%	3,469	-20.3%	2,266	22.0%	3,400	-18.7%
135	220	234	-5.8%	349	-36.9%	128	72.1%	349	-36.9%
137 - WEST DADE CONN.	672	560	20.0%	879	-23.6%	613	9.5%	779	-13.8%
150 - MIAMI BEACH AIRPORT FLYER	1,264	996	26.9%	1,574	-19.7%	949	33.2%	1,463	-13.6%
183	1,129	1,113	1.4%	1,413	-20.1%	1,007	12.1%	1,258	-10.3%
200 - CUTLER BAY LOCAL		45		59		18		48	
202 - LITTLE HAVANA CONN. (*)	66	98	-32.4%	39	69.9%	66	0.7%	54	21.9%
207 (7st) - LITTLE HAVANA CIRC	561	545	2.9%	796	-29.5%	491	14.2%	699	-19.7%
208 (8st) - LITTLE HAVANA CIRC	540	667	-19.1%	911	-40.8%	561	-3.8%	908	-40.6%
210 - SKYLAKE CIRC (*)	128	120	5.9%	143	-10.8%	141	-9.7%	155	-17.7%
241 TUTTLE LIMITED	21								
246 - NIGHT OWL (*)	28	61	-53.8%	87	-67.5%	58	-51.5%	107	-73.5%
252 - CORAL REEF MAX	199	159	25.6%	199	0.3%	159	25.6%	229	-13.1%
301 DADE-MONROE EXPRESS(*)	679	827	-17.9%	751	-9.7%	683	-0.6%	753	-9.8%
302 CARD SOUND EXPRESS(*)	48	56	-13.7%	57	-15.8%	48	0.0%	70	-31.3%
338 - WEEKEND EXPRESS	175	92	89.5%	252	-30.7%	164	6.8%	219	-20.1%
500	8	46	-83.3%	83	-90.6%			39	-80.2%
12/21 WEEKEND INTERL.	1,451	1,618	-10.3%	2,048	-29.1%	1,418	2.3%	1,955	-25.8%
Total	56,810	54,728	3.8%	75,428	-24.7%	53,582	6.0%	71,426	-20.5%

METROBUS TOTAL MONTHLY BOARDINGS BY ROUTE

Route	Total Month	Total Month	Percent Change	Total Month	Percent Change	Total Month	Percent Change	Total Month	Percent Change
Monthly Total	Dec-21	Dec-20	YOY	Feb-20	Current vs Feb-20	Nov-21	MOM	Dec-19	YO2Y
1 (*)	4,648	5,256	-11.6%	5,558	-16.4%	4,385	6.0%	9,269	-49.9%
2	48,438	48,249	0.4%	75,463	-35.8%	55,613	-12.9%	60,687	-20.2%
3	108,013	109,507	-1.4%	146,294	-26.2%	119,085	-9.3%	148,005	-27.0%
7	65,521	53,506	22.5%	86,077	-23.9%	69,049	-5.1%	78,875	-16.9%
8	85,006	88,041	-3.4%	95,295	-10.8%	91,627	-7.2%	90,285	-5.8%
9	109,572	124,795	-12.2%	135,924	-19.4%	119,184	-8.1%	136,412	-19.7%
10	44,886	39,436	13.8%	64,874	-30.8%	43,770	2.5%	58,385	-23.1%
11	160,503	149,050	7.7%	187,425	-14.4%	179,430	-10.5%	181,157	-11.4%
12	40,553	44,743	-9.4%	55,585	-27.0%	39,551	2.5%	51,889	-21.8%
16	37,813	34,153	10.7%	49,061	-22.9%	33,286	13.6%	48,703	-22.4%
17	68,485	63,968	7.1%	96,715	-29.2%	63,933	7.1%	93,560	-26.8%
19	18,702	21,734	-14.0%	30,847	-39.4%	17,695	5.7%	27,562	-32.1%
21	27,422	33,577	-18.3%	36,341	-24.5%	24,041	14.1%	37,269	-26.4%
22	65,063	63,382	2.7%	89,404	-27.2%	61,420	5.9%	89,365	-27.2%
24 - Coral Way Limited	35,329	37,100	-4.8%	36,237	-2.5%	25,013	41.2%	45,137	-21.7%
27	124,084	134,381	-7.7%	171,282	-27.6%	126,110	-1.6%	167,976	-26.1%
29 (*)	7,746	7,579	2.2%	10,684	-27.5%	6,520	18.8%	13,699	-43.5%
31 - BUSWAY LOCAL	18,346	17,211	6.6%	29,125	-37.0%	18,591	-1.3%	28,793	-36.3%
32	40,188	44,812	-10.3%	56,027	-28.3%	34,967	14.9%	54,336	-26.0%
33	28,942	27,565	5.0%	40,918	-29.3%	28,086	3.0%	41,532	-30.3%
34 EXPRESS	18,854	17,473	7.9%	40,159	-53.1%	14,917	26.4%	37,257	-49.4%
35	39,060	44,127	-11.5%	59,041	-33.8%	42,549	-8.2%	59,666	-34.5%
36	50,141	54,163	-7.4%	61,606	-18.6%	47,416	5.7%	62,236	-19.4%
37	66,870	65,333	2.4%	82,870	-19.3%	69,354	-3.6%	83,425	-19.8%
38	107,313	118,293	-9.3%	167,379	-35.9%	116,449	-7.8%	175,265	-38.8%
39 EXPRESS	5,677	4,263	33.2%	17,853	-68.2%	4,036	40.7%	16,697	-66.0%
40	31,171	25,257	23.4%	40,497	-23.0%	29,115	7.1%	37,872	-17.7%
42	16,827	15,133	11.2%	20,825	-19.2%	16,992	-1.0%	21,322	-21.1%
46 - LIBERTY CITY CONN. (*)	336	430	-21.9%	814	-58.7%	390	-13.8%	1,072	-68.7%
51 - FLAGLER MAX	53,925	42,139	28.0%	62,186	-13.3%	53,475	0.8%	61,689	-12.6%
52	20,893	21,501	-2.8%	30,522	-31.5%	26,977	-22.6%	29,443	-29.0%
54	52,509	60,689	-13.5%	72,125	-27.2%	52,646	-0.3%	73,969	-29.0%
55 MARLINS SHUTTLE									
56 (*)	4,415	3,491	26.5%	7,071	-37.6%	5,117	-13.7%	7,854	-43.8%
57	6,071	5,295	14.7%	8,665	-29.9%	5,448	11.4%	8,025	-24.3%
62	32,763	44,607	-26.6%	46,582	-29.7%	33,158	-1.2%	48,248	-32.1%
71 (*)	11,154	9,696	15.0%	16,118	-30.8%	10,389	7.4%	15,302	-27.1%
72 (*)	12,576	9,766	28.8%	18,433	-31.8%	12,773	-1.5%	17,779	-29.3%

METROBUS TOTAL MONTHLY BOARDINGS BY ROUTE

Route	Total Month	Total Month	Percent Change	Total Month	Percent Change	Total Month	Percent Change	Total Month	Percent Change
Monthly Total	Dec-21	Dec-20	YOY	Feb-20	Current vs Feb-20	Nov-21	MOM	Dec-19	YO2Y
73	44,035	32,265	36.5%	48,767	-9.7%	41,172	7.0%	44,936	-2.0%
75	21,842	21,622	1.0%	31,994	-31.7%	20,651	5.8%	33,345	-34.5%
77	150,590	145,522	3.5%	174,833	-13.9%	143,889	4.7%	181,483	-17.0%
79 STREET MAX	5,758			7,228	-20.3%	512	1024.6%	8,155	-29.4%
82 - WESTCHESTER CIRC. (*)	875	647	35.2%	1,482	-41.0%	517	69.2%	1,584	-44.8%
87	27,549	24,724	11.4%	33,273	-17.2%	26,259	4.9%	33,077	-16.7%
88	41,625	40,241	3.4%	54,772	-24.0%	54,408	-23.5%	56,990	-27.0%
93 - BISCAYNE MAX	50,016	29,777	68.0%	66,684	-25.0%	41,182	21.5%	66,587	-24.9%
95 EXPRESS	13,197	7,937	66.3%	33,796	-61.0%	7,938	66.3%	34,115	-61.3%
99	28,606	26,102	9.6%	36,325	-21.2%	27,787	2.9%	36,249	-21.1%
101 - A (*)	3,686	2,614	41.0%	4,114	-10.4%	3,082	19.6%	4,130	-10.8%
102 - B	34,157	3,673	829.9%	42,683	-20.0%	33,784	1.1%	40,802	-16.3%
103 - C	6,122	8,768	-30.2%	11,682	-47.6%	5,061	21.0%	11,465	-46.6%
104	13,339	7,428	79.6%	20,351	-34.5%	13,677	-2.5%	20,522	-35.0%
105 - E	25,314	24,704	2.5%	31,302	-19.1%	23,719	6.7%	31,710	-20.2%
107 - G	33,644	25,842	30.2%	43,178	-22.1%	30,738	9.5%	42,820	-21.4%
108 - H	10,204	10,548	-3.3%	12,624	-19.2%	9,307	9.6%	13,190	-22.6%
110 - J	55,915	49,488	13.0%	66,481	-15.9%	53,054	5.4%	70,157	-20.3%
112 - L	172,773	197,297	-12.4%	200,268	-13.7%	180,602	-4.3%	208,875	-17.3%
113 - M	14,669	13,902	5.5%	21,548	-31.9%	11,162	31.4%	20,871	-29.7%
115 (*)	4,020	5,781	-30.5%	4,334	-7.2%	3,574	12.5%	4,288	-6.3%
119 - S	205,230	218,936	-6.3%	242,257	-15.3%	203,920	0.6%	254,718	-19.4%
120 - BEACH MAX	139,614	123,996	12.6%	170,942	-18.3%	119,400	16.9%	179,335	-22.1%
132 TRI-RAL (DORAL)	67	665	-89.9%	312	-78.5%	58	15.5%	63	6.3%
135 (*)	20,270	18,383	10.3%	32,067	-36.8%	14,320	41.6%	30,954	-34.5%
136	2,636	882	198.9%	2,524	4.4%	2,303	14.5%	2,481	6.2%
137 - WEST DADE CONN.	31,786	27,055	17.5%	41,167	-22.8%	30,572	4.0%	40,658	-21.8%
150 - MIAMI BEACH AIRPORT FLYER	41,088	31,198	31.7%	51,651	-20.5%	31,162	31.9%	50,065	-17.9%
155 - BISCAYNE GARDENS CIRCULATOR (*)	755	700	7.9%	881	-14.3%	629	20.0%	1,012	-25.4%
175 - NW MIAMI-DADE EXPRESS				661				329	
183	59,413	62,305	-4.6%	77,570	-23.4%	52,970	12.2%	78,182	-24.0%
195 EXPRESS - BROWARD BLVD				7,441				6,870	
196 EXPRESS - SHERIDAN ST				7,658				6,998	
200 - CUTLER BAY LOCAL	2,265	3,134	-27.7%	3,984	-43.1%	3,309	-31.6%	3,932	-42.4%
202 - LITTLE HAITI CONN. (*)	3,063	3,644	-15.9%	3,200	-4.3%	1,526	100.7%	3,402	-10.0%
204 KILLIAN KAT	6,468			21,418	-69.8%	501	1191.0%	17,725	-63.5%

METROBUS TOTAL MONTHLY BOARDINGS BY ROUTE

Route	Total Month	Total Month	Percent Change	Total Month	Percent Change	Total Month	Percent Change	Total Month	Percent Change
Monthly Total	Dec-21	Dec-20	YOY	Feb-20	Current vs Feb-20	Nov-21	MOM	Dec-19	YO2Y
207 (7st) - LITTLE HAVANA CIRC	29,730	22,399	32.7%	38,127	-22.0%	23,124	28.6%	40,422	-26.5%
208 (8st) - LITTLE HAVANA CIRC	27,315	24,933	9.6%	35,018	-22.0%	22,282	22.6%	40,483	-32.5%
210 - SKYLAKE CIRC (*)	7,824	7,481	4.6%	7,033	11.2%	6,898	13.4%	6,305	24.1%
211 - OVERTOWN CIRC. (*)	1,970	1,035	90.3%	1,159	70.0%	1,521	29.5%	1,503	31.1%
212 - SWEETWATER CIRC. (*)	584	352	65.9%	295	98.0%	839	-30.4%	1,174	-50.3%
217 - BUNCHE PARK CIRC (*)	1,298	1,260	3.0%	1,949	-33.4%	1,326	-2.1%	1,456	-10.9%
238 EAST/WEST CONN.	8,410	6,651	26.4%	8,987	-6.4%	7,793	7.9%	9,415	-10.7%
241 TUTTLE LIMITED	449								
246 - NIGHT OWL (*)	915	1,983	-53.9%	2,641	-65.4%	1,845	-50.4%	3,145	-70.9%
248 - PRINCETON CIRCULATOR (*)	1,471	1,447	1.7%	2,690	-45.3%	1,197	22.9%	768	91.5%
252 - CORAL REEF MAX	13,477	10,549	27.8%	19,325	-30.3%	12,299	9.6%	18,865	-28.6%
254 - BROWNSVILLE CIRC. (*)	157	280	-43.9%	384	-59.1%	135	16.3%	393	-60.1%
267 - LUDLAM LIMITED (*)	2,111	2,048	3.1%	2,978	-29.1%	1,770	19.3%	2,656	-20.5%
272 SUNSET KAT (*)	6,178	4,604	34.2%	11,004	-43.9%	6,644	-7.0%	10,849	-43.1%
277 - 7th AVENUE MAX	9,587	9,627	-0.4%	13,669	-29.9%	8,046	19.2%	12,260	-21.8%
286 - NORTH POINTE CIRC. (*)	923	894	3.2%	2,145	-57.0%	887	4.1%	2,228	-58.6%
287 - SAGA BAY MAX	4,026	2,384	68.9%	7,160	-43.8%	3,624	11.1%	6,552	-38.6%
288 - KENDALL CRUISER	6,578			15,249	-56.9%	425	1447.8%	14,897	-55.8%
295 EXPRESS - BROWARD BLVD - CIVIC CENTER				4,668				4,547	
296 EXPRESS - SHERIDAN ST - CIVIC CENTER				4,297				4,113	
297-27th AVENUE ORANGE MAX	18,024	15,764	14.3%	27,125	-33.6%	14,618	23.3%	26,892	-33.0%
301 DADE-MONROE EXPRESS (*)	22,714	26,398	-14.0%	23,838	-4.7%	23,638	-3.9%	25,280	-10.2%
302 CARD SOUND EXPRESS (*)	1,859	2,209	-15.8%	2,236	-16.9%	1,818	2.3%	2,290	-18.8%
338 - WEEKEND EXPRESS	1,201	882	36.2%	2,191	-45.2%	1,693	-29.1%	2,236	-46.3%
344 (*)	1,009	1,458	-30.8%	1,919	-47.4%	1,198	-15.8%	2,135	-52.7%
500	197	1,376	-85.7%	2,301	-91.4%			1,283	-84.6%
836 EXPRESS	2,509					2,983	-15.9%		
12/21 WEEKEND INTERL.	12,512	16,676	-25.0%	20,830	-39.9%	14,408	-13.2%	22,341	-44.0%
GREEN HILLS SHUTTLE (*)	15	22	-31.8%	36	-58.3%	23	-34.8%	38	-60.5%
KINGS CREEK SHUTTLE (*)	64	51	25.5%	52	23.1%	27	137.0%	76	-15.8%
SIERRALAKES SHUTTLE (*)	86	52	65.4%	180	-52.2%	74	16.2%	105	-18.1%
ROBERT SHARP SHUTTLE (*)	108	94	14.9%	38	184.2%	92	17.4%	19	468.4%
AHEPA SHUTTLE (*)	105	90	16.7%	83	26.5%	111	-5.4%	70	50.0%
FEDERATION GARDENSSHUTTLE (*)	71	50	42.0%	142	-50.0%	86	-17.4%	102	-30.4%
Total	3,123,883	3,022,530	3.4%	4,123,083	-24.2%	3,056,726	2.2%	4,126,990	-24.3%

METROBUS HOLIDAY BOARDINGS BY ROUTE

Christmas Eve

ROUTES	Christmas Day 2020	Christmas Eve 2021	Pct Delta	ROUTES	Christmas Day 2020	Christmas Eve 2021	Pct Delta	ROUTES	Christmas Day 2020	Christmas Eve 2021	Pct Delta
1	63	49	-22.2%	71	60	289	381.7%	200	25	59	136.0%
2	679	1,381	103.4%	72	66	242	266.7%	202	58	79	36.2%
3	2,117	2,374	12.1%	73	152	815	436.2%	204		124	
7	491	1,318	168.4%	75	176	600	240.9%	207	304	880	189.5%
8	807	1,786	121.3%	77	2,146	4,766	122.1%	208	565	971	71.9%
9	1,503	3,395	125.9%	79		130		210	59	213	261.0%
10	471	1,264	168.4%	82		35		211		85	
11	1,503	3,559	136.8%	87	95	510	436.8%	212		20	
12	405	1,206	197.8%	88	287	912	217.8%	217		31	
16	614	813	32.4%	93		1,633		238		281	
17	709	2,038	187.4%	95		126		241		15	
19		502		99	314	928	195.5%	246	30	53	76.7%
21	495	879	77.6%	101	24	73	204.2%	248		55	
22	838	1,556	85.7%	102	124	839	576.6%	252	117	284	142.7%
24	401	933	132.7%	103	132	135	2.3%	254		11	
27	1,782	2,732	53.3%	104	50	260	420.0%	267		55	
29		232		105	297	612	106.1%	272		132	
31	241	396	64.3%	107	452	976	115.9%	277		256	
32	387	940	142.9%	108	163	220	35.0%	286		11	
33	205	710	246.3%	110	661	1,568	137.2%	287		72	
34		266		112	2,657	5,331	100.6%	288		163	
35	649	1,028	58.4%	113	247	353	42.9%	295			
36	859	1,308	52.3%	115	103	103	0.0%	296			
37	853	1,659	94.5%	119	4,401	6,045	37.4%	297		568	
38	1,717	3,026	76.2%	120	2,138	4,506	110.8%	301	616	691	12.2%
39		60		132		2		302	70	58	-17.1%
40	150	568	278.7%	135	157	409	160.5%	344		40	
42	200	362	81.0%	136		48		500	48	3	-93.8%
46		13		137	242	744	207.4%	836		17	
51		1,312		150	962	1,370	42.4%				
52	148	503	239.9%	155		27					
54	623	1,292	107.4%	175							
56		99		183	676	1,639	142.5%				
57		120		195							
62	589	903	53.3%	196				Total (1)	37,162	82,055	120.8%

(*) Corresponding County-observed holiday for each year.

(1) Excludes Lifeline shuttles and some routes not run both years.

METROBUS HOLIDAY BOARDINGS BY ROUTE

New Year's Eve

ROUTES	New Year's Day 2021	New Year's Eve 2021	Pct Delta	ROUTES	New Year's Day 2021	New Year's Eve 2021	Pct Delta	ROUTES	New Year's Day 2021	New Year's Eve 2021	Pct Delta
1	94	158	68.1%	71	89	272	205.6%	200	34		
2	881	1,344	52.6%	72	98	264	169.4%	202	20	133	565.0%
3	2,900	2,406	-17.0%	73	290	761	162.4%	204		114	
7	625	1,483	137.3%	75	258	578	124.0%	207	466	678	45.5%
8	1,400	2,016	44.0%	77	3,234	4,638	43.4%	208	566	663	17.1%
9	2,614	3,409	30.4%	79		83		210	120	256	113.3%
10	989	1,079	9.1%	82		29		211		95	
11	1,877	4,198	123.7%	87	126	559	343.7%	212		14	
12	772	1,241	60.8%	88	560	749	33.8%	217		44	
16	771	976	26.6%	93		1,518		238		264	
17	1,330	1,374	3.3%	95		177		241		167	
19		474		99	493	711	44.2%	246	83	45	-45.8%
21	959	938	-2.2%	101	23	93	304.3%	248		55	
22	1,115	1,463	31.2%	102	145	757	422.1%	252	109	274	151.4%
24	530	362	-31.7%	103	186	112	-39.8%	254		6	
27	2,209	2,552	15.5%	104	3	289	9533.3%	267		69	
29		247		105	527	779	47.8%	272		154	
31	560	328	-41.4%	107	671	698	4.0%	277		288	
32	224	726	224.1%	108	307	256	-16.6%	286		69	
33	451	558	23.7%	110	1,283	1,017	-20.7%	287		80	
34		279		112	3,355	4,117	22.7%	288		161	
35	816	901	10.4%	113	248	313	26.2%	295			
36	998	1,288	29.1%	115	161	116	-28.0%	296			
37	1,010	1,371	35.7%	119	5,721	5,349	-6.5%	297		569	
38	2,210	2,619	18.5%	120	2,276	3,791	66.6%	301	783	695	-11.2%
39		49		132		11		302	55	59	7.3%
40	265	534	101.5%	135	239	406	69.9%	338	51		
42	216	346	60.2%	136		30		344		39	
46		11		137	471	665	41.2%	500	50	6	-88.0%
51		1,427		150	1,058	1,076	1.7%	836		33	
52	245	494	101.6%	155		28					
54	1,078	1,136	5.4%	175							
56		118		183	1,374	1,630	18.6%				
57		117		195							
62	622	897	44.2%	196				Total (1)	53,294	75,821	42.3%

(*) Corresponding County-observed holiday for each year.

(1) Excludes Lifeline shuttles and some routes not run both years.

YEAR-OVER-YEAR BUS RIDERSHIP BY ROUTE SERVICE TYPE

Boardings by Service Type and Route	Average Weekday	Average Weekday	Percent Change	Average Saturday	Average Saturday	Percent Change	Average Sunday	Average Sunday	Percent Change	Total Monthly	Total Monthly	Percent Change
	Dec-21	Dec-20	21 vs 20	Dec-21	Dec-20	21 vs 20	Dec-21	Dec-20	21 vs 20	Dec-21	Dec-20	21 vs 20
Express Routes (1)												
34 EXPRESS	820	794	3.2%							18,854	17,473	7.9%
39 EXPRESS	247	194	27.4%							5,677	4,263	33.2%
95-EXPRESS	574	361	59.0%							13,197	7,937	66.3%
150-MIAMI BEACH AIRPORT FLYER	1,339	1,026	30.5%	1,311	912	43.8%	1,264	996	26.9%	41,088	31,198	31.7%
175 - NW MIAMI-DADE EXPRESS												
195 EXPRESS - BROWARD BLVD												
196 EXPRESS - SHERIDAN ST												
295 EXPRESS - BROWARD BLVD - CIVIC CENTER												
296 EXPRESS - SHERIDAN ST - CIVIC CENTER												
204 KAT-KILLIAN	281									6,468		
288 KENDALL CRUISER	286									6,578		
338 - WEEKEND EXPRESS				126	105	19.2%	175	92	89.5%	1,201	882	36.2%
836 EXPRESS	109									2,509		
Subtotal Express Routes	3,655	2,375	53.9%	1,437	1,017	41.2%	1,439	1,088	32.2%	95,572	61,753	54.8%
Percentage of All Bus Routes	3.2%	2.1%		2.2%	1.4%		2.5%	2.0%		3.1%	2.0%	
Contracted Regular & Circulator Routes												
1	158	176	-9.9%	116	176	-34.1%	137	138	-1.0%	4,648	5,256	-11.6%
29	337	345	-2.2%							7,746	7,579	2.2%
46 - LIBERTY CITY CONN.	15	20	-25.3%							336	430	-21.9%
56	192	159	21.0%							4,415	3,491	26.5%
71	435	369	17.9%	143	207	-31.0%	142	149	-4.6%	11,154	9,696	15.0%
72	455	371	22.7%	254	201	26.2%	276	162	70.7%	12,576	9,766	28.8%
82 - WESTCHESTER CIRC	33	24	36.7%	31	30	1.7%				875	647	35.2%
101 - A	143	100	42.6%	55	59	-6.0%	44	35	27.9%	3,686	2,614	41.0%
115	145	190	-23.6%	82	198	-58.5%	89	162	-45.1%	4,020	5,781	-30.5%
155 - BISCAYNE GARDENS CIRC	33	32	3.2%							755	700	7.9%
202 - LITTLE HAITI CONN.	109	122	-10.9%	73	117	-37.1%	66	98	-32.4%	3,063	3,644	-15.9%
210 - SKYLAKE CIRC	299	284	5.4%	108	159	-32.1%	128	120	5.9%	7,824	7,481	4.6%
211-OVERTOWN CIRC	86	47	82.1%							1,970	1,035	90.3%
212-SWEETWATER CIRC	25	16	58.7%							584	352	65.9%
217 - BUNCHE PARK CIRC	56	57	-1.5%							1,298	1,260	3.0%
246 - NIGHT OWL	29	68	-57.9%	35	43		28	61		915	1,983	-53.9%
248 - PRINCETON CIRCULATOR	64	66	-2.8%							1,471	1,447	1.7%
254-BROWNSVILLE CIRC	7	13	-46.4%							157	280	-43.9%
267-LUDLAM LIMITED	92	93	-1.4%							2,111	2,048	3.1%
272 KAT-SUNSET	269	209	28.4%							6,178	4,604	34.2%
286-NORTH POINTE CIRC	35	35	-0.7%	32	32	0.0%				923	894	3.2%
344	44	66	-33.8%							1,009	1,458	-30.8%
Subtotal Contracted Reg. & Circ. Routes	3,059	2,861	6.9%	929	1,222	-24.0%	910	925	-1.6%	77,714	72,446	7.3%
Percentage of All Bus Routes	2.7%	2.6%		1.4%	1.6%		1.6%	1.7%		2.5%	2.4%	

(1) Several express routes were suspended beginning at the end of March 2020, due to the SARS-CoV-2 pandemic, while other routes had alignment and schedule modifications made to them, in an ongoing effort to optimize service delivery..

YEAR-OVER-YEAR BUS RIDERSHIP BY ROUTE SERVICE TYPE

Boardings by Service Type and Route	Average Weekday	Average Weekday	Percent Change	Average Saturday	Average Saturday	Percent Change	Average Sunday	Average Sunday	Percent Change	Total Monthly	Total Monthly	Percent Change
	Dec-21	Dec-20	21 vs 20	Dec-21	Dec-20	21 vs 20	Dec-21	Dec-20	21 vs 20	Dec-21	Dec-20	21 vs 20
Contracted Express Routes												
301-DADE MONROE EXPRESS	755	847	-10.8%	658	909	-27.6%	679	827	-17.9%	22,714	26,398	-14.0%
302-CARD SOUND EXPRESS	67	78	-13.7%	31	55	-43.4%	48	56	-13.7%	1,859	2,209	-15.8%
Subtotal Contracted Express Routes	822	925	-11.1%	689	964	-28.6%	727	882	-17.6%	24,573	28,607	-14.1%
Percentage of All Bus Routes	0.7%	0.8%		1.0%	1.3%		1.3%	1.6%		0.8%	0.9%	
Limited Stop Routes												
51-FLAGLER MAX	2,345	1,915	22.4%							53,925	42,139	28.0%
79 STREET MAX	250									5,758		
93 - BISCAYNE MAX	2,175	1,354	60.7%							50,016	29,777	68.0%
120 - BEACH MAX	4,989	4,465	11.7%	3,456	3,627	-4.7%	2,764	2,254	22.6%	139,614	123,996	12.6%
252-CORAL REEF MAX	512	404	26.7%	224	216	3.9%	199	159	25.6%	13,477	10,549	27.8%
277-7TH AVENUE MAX	417	438	-4.7%							9,587	9,627	-0.4%
287-SAGA BAY MAX	175	108	61.5%							4,026	2,384	68.9%
297-27th AVENUE ORANGE MAX	772	717	7.8%				129			18,024	15,764	14.3%
Subtotal Limited Stop (MAX) Routes	11,635	9,400	23.8%	3,680	3,842	-4.2%	3,092	2,412	28.2%	294,427	234,236	25.7%
Percentage of All Bus Routes	10.2%	8.4%		5.5%	5.1%		5.4%	4.4%		9.4%	7.7%	
Free Route												
132 -TRI-RAIL DORAL	5	30	-82.9%							67	665	-89.9%
Percentage of All Bus Routes	0.0%	0.0%								0.0%	0.0%	
Shuttles												
55-MARLINS SHUTTLE												
Percentage of All Bus Routes												
Contractor-Operated Lifeline Routes												
GREEN HILLS SHUTTLE	4	6	-31.8%							15	22	-31.8%
KINGS CREEK SHUTTLE	13	10	25.5%							64	51	25.5%
SIERRA LAKES SHUTTLE	17	17	-0.8%							86	52	65.4%
ROBERT SHARP SHUTTLE	22	19	14.9%							108	94	14.9%
AHEPA SHUTTLE	21	18	16.7%							105	90	16.7%
FEDERATION GARDENS SHUTTLE				24	13	89.3%				71	50	42.0%
Subtotal Contractor-Operated Lifeline Routes	76	70	9.3%	24	13	89.3%				449	359	25.1%
Percentage of All Bus Routes	0.1%	0.1%		0.0%	0.0%					0.0%	0.0%	
Other Circulator Route												
200-CUTLER BAY LOCAL (†)	97	117	-17.0%	56	83	-32.1%		45	-100.0%	2,265	3,134	-27.7%
Percentage of All Bus Routes	0.1%	0.1%		0.1%	0.1%		0.0%	0.1%		0.1%	0.1%	
All Other (Regular) Routes	95,161	95,617	-0.5%	59,540	67,721	-12.1%	50,643	49,375	2.6%	2,628,816	2,621,330	0.3%
Percentage of All Bus Routes	83.1%	85.8%		89.7%	90.5%		89.1%	90.2%		84.2%	86.7%	
Total Bus System	114,511	111,394	2.8%	66,354	74,861	-11.4%	56,810	54,728	3.8%	3,123,883	3,022,530	3.4%

(†) Due to various communications system and process issues, the NextFare System did not capture a portion of the Cutler Bay Local ridership in December 2021.

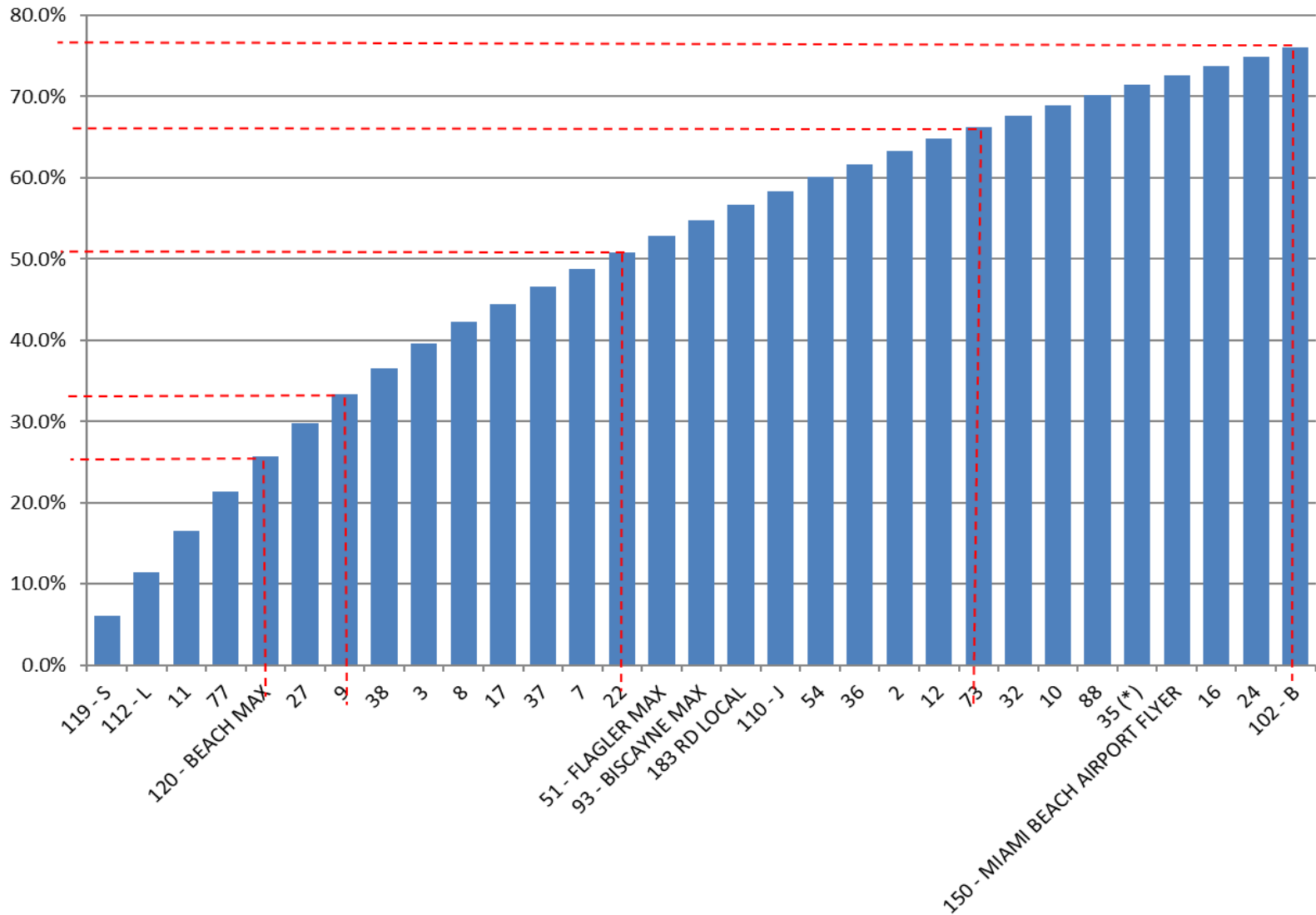
Bus Routes as Ranked by Percentage of Average Weekday Ridership

Rank	Route	Average Weekday	Percent Share	Cumul Pct Share	Rank	Route	Average Weekday	Percent Share	Cumul Pct Share	Rank	Route	Average Weekday	Percent Share	Cumul Pct Share
1	119	7,017	6.1%	6.1%	36	137	1,139	1.0%	81.2%	71	287	175	0.2%	98.6%
2	112	6,091	5.3%	11.4%	37	87	1,091	1.0%	82.1%	72	1	158	0.1%	98.7%
3	11	5,823	5.1%	16.5%	38	33	1,070	0.9%	83.1%	73	115	145	0.1%	98.9%
4	77	5,576	4.9%	21.4%	39	207	1,064	0.9%	84.0%	74	101	143	0.1%	99.0%
5	120	4,989	4.4%	25.8%	40	99	1,042	0.9%	84.9%	75	136	115	0.1%	99.1%
6	27	4,581	4.0%	29.8%	41	208	983	0.9%	85.8%	76	836	109	0.1%	99.2%
7	9	4,072	3.6%	33.3%	42	105	936	0.8%	86.6%	77	202	109	0.1%	99.3%
8	38	3,705	3.2%	36.5%	43	75	850	0.7%	87.3%	78	200	97	0.1%	99.4%
9	3	3,487	3.0%	39.6%	44	34	820	0.7%	88.0%	79	267	92	0.1%	99.5%
10	8	3,137	2.7%	42.3%	45	19	813	0.7%	88.7%	80	211	86	0.1%	99.5%
11	17	2,486	2.2%	44.5%	46	52	793	0.7%	89.4%	81	302	67	0.1%	99.6%
12	37	2,427	2.1%	46.6%	47	135	788	0.7%	90.1%	82	248	64	0.1%	99.6%
13	7	2,421	2.1%	48.7%	48	297	772	0.7%	90.8%	83	217	56	0.0%	99.7%
14	22	2,377	2.1%	50.8%	49	301	755	0.7%	91.5%	84	344	44	0.0%	99.7%
15	51	2,345	2.0%	52.9%	50	31	625	0.5%	92.0%	85	241	42	0.0%	99.8%
16	93	2,175	1.9%	54.8%	51	42	616	0.5%	92.5%	86	286	35	0.0%	99.8%
17	183	2,170	1.9%	56.7%	52	95	574	0.5%	93.0%	87	155	33	0.0%	99.8%
18	110	1,968	1.7%	58.4%	53	252	512	0.4%	93.5%	88	82	33	0.0%	99.9%
19	54	1,927	1.7%	60.1%	54	113	508	0.4%	93.9%	89	246	29	0.0%	99.9%
20	36	1,863	1.6%	61.7%	55	104	493	0.4%	94.4%	90	212	25	0.0%	99.9%
21	2	1,789	1.6%	63.2%	56	72	455	0.4%	94.8%	91	RS	22	0.0%	99.9%
22	12	1,763	1.5%	64.8%	57	71	435	0.4%	95.1%	92	AS	21	0.0%	99.9%
23	73	1,702	1.5%	66.3%	58	277	417	0.4%	95.5%	93	SL	17	0.0%	100.0%
24	32	1,545	1.3%	67.6%	59	238	366	0.3%	95.8%	94	46	15	0.0%	100.0%
25	10	1,545	1.3%	69.0%	60	108	357	0.3%	96.1%	95	KC	13	0.0%	100.0%
26	88	1,456	1.3%	70.2%	61	29	337	0.3%	96.4%	96	254	7	0.0%	100.0%
27	35	1,416	1.2%	71.5%	62	210	299	0.3%	96.7%	97	500	6	0.0%	100.0%
28	150	1,339	1.2%	72.6%	63	288	286	0.2%	96.9%	98	132	5	0.0%	100.0%
29	16	1,328	1.2%	73.8%	64	204	281	0.2%	97.2%	99	GH	4	0.0%	100.0%
30	24	1,263	1.1%	74.9%	65	272	269	0.2%	97.4%					
31	102	1,262	1.1%	76.0%	66	57	264	0.2%	97.7%					
32	40	1,208	1.1%	77.1%	67	79	250	0.2%	97.9%					
33	62	1,199	1.0%	78.1%	68	39	247	0.2%	98.1%					
34	21	1,192	1.0%	79.2%	69	103	227	0.2%	98.3%					
35	107	1,181	1.0%	80.2%	70	56	192	0.2%	98.5%					
										entirely contracted				
										Total Boardings	114,511	100.0%	100.0%	

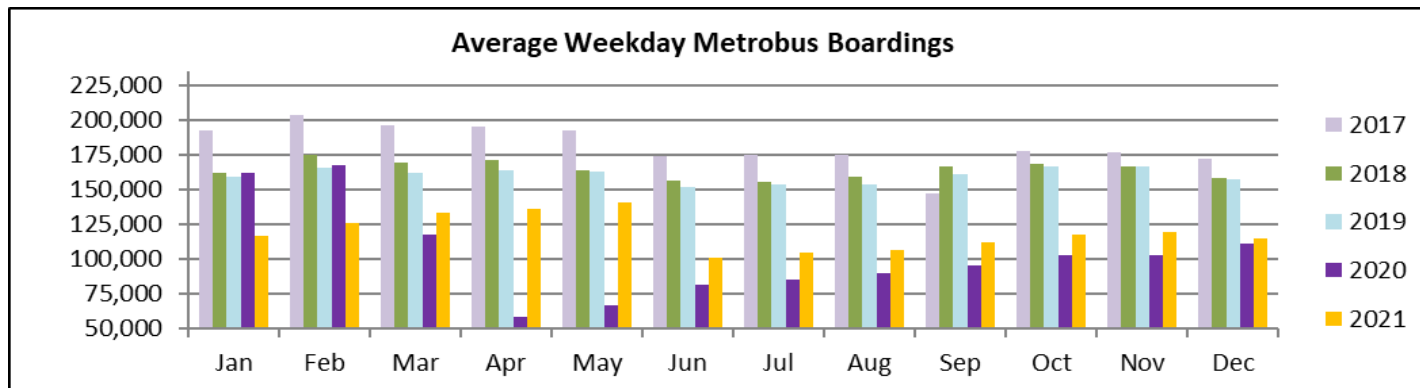
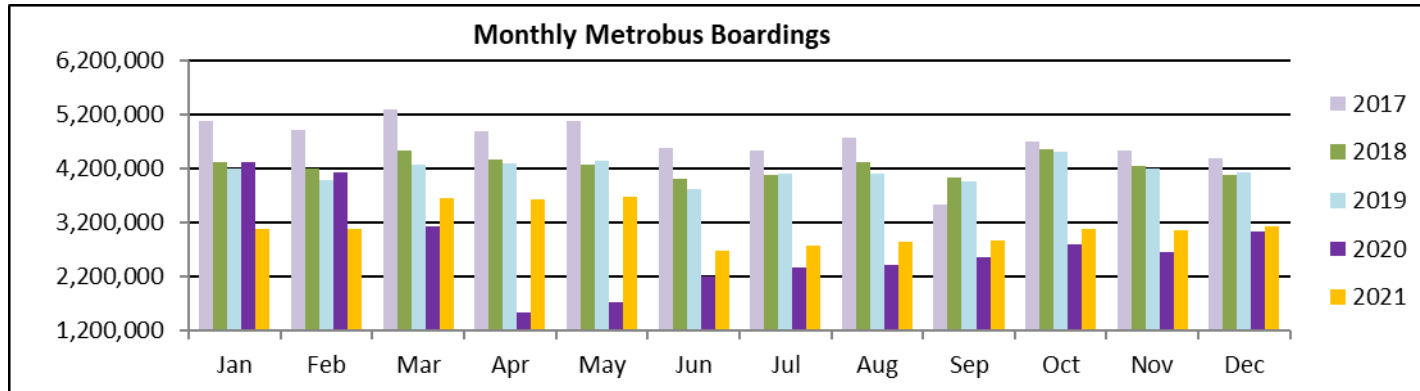
(1) Average weekday ridership rounded to the nearest unit.

(2) Includes the five Lifeline Shuttles that operate on weekdays: Ahepa, Green Hills, Kings Creek, Robert Sharp and Sierra Lakes.

**Bus - Cumulative Percentage Average Weekday Ridership Share
Top 1/4, 1/3, 1/2, 2/3 and 3/4 of Routes**



TOTAL MONTHLY AND AVERAGE WEEKDAY RIDERSHIP YEAR OVER YEAR COMPARISON CHARTS – METROBUS

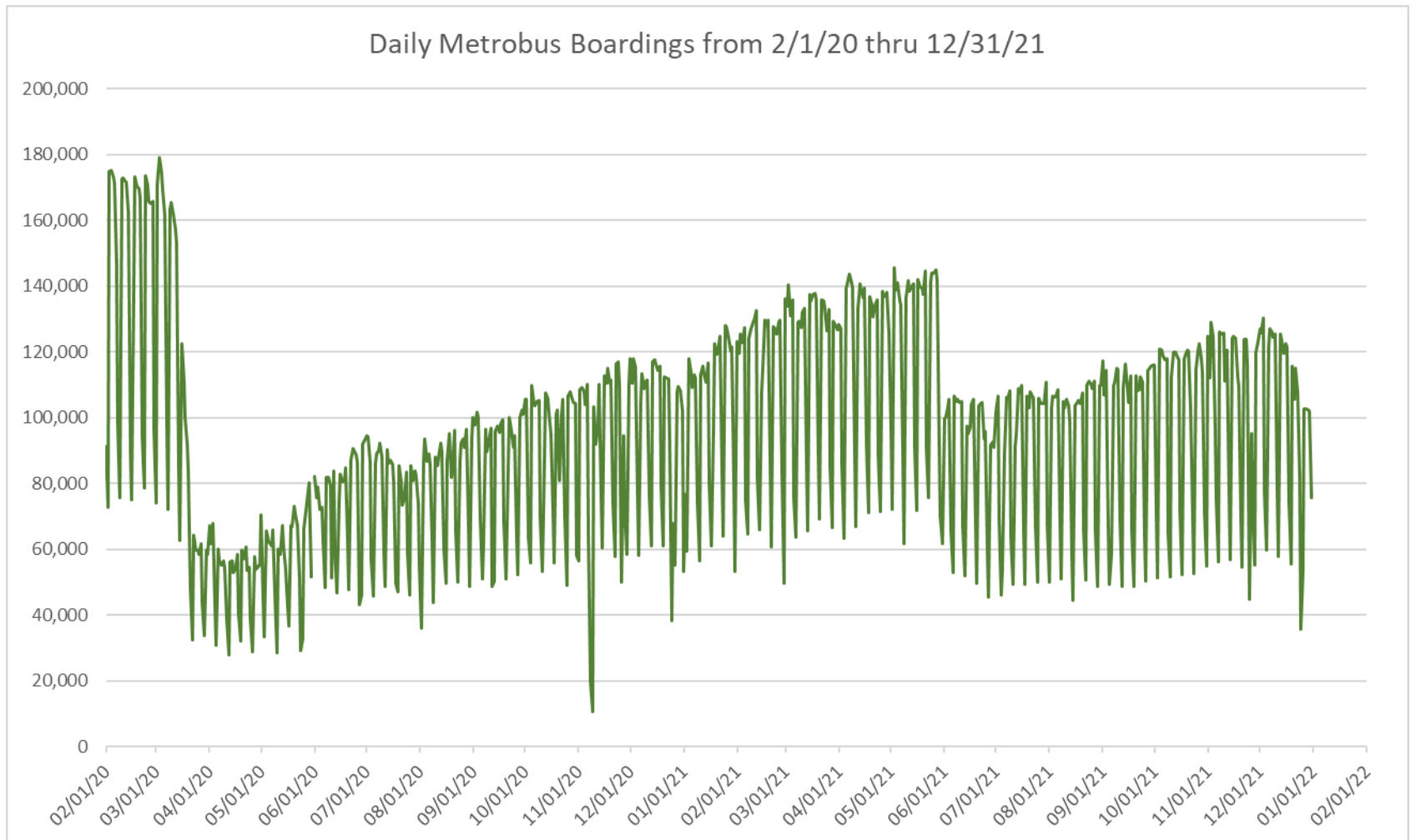


“TOP 5 / BOTTOM 5” BUS ROUTES AVERAGE WEEKDAY RIDERSHIP PERFORMANCE YEAR OVER YEAR COMPARISONS

Route	Dec-21	Dec-20	Absolute Delta (1)	Percent Delta (2)
102 - B	1,262	111	1,151	1040.9%
93 - BISCAYNE MAX	2,175	1,354	821	60.7%
120 - BEACH MAX	4,989	4,465	524	11.7%
7	2,421	1,937	484	25.0%
73	1,702	1,255	448	35.7%
112 - L	6,091	7,143	-1,052	-14.7%
9	4,072	4,723	-651	-13.8%
119 - S	7,017	7,617	-600	-7.9%
38	3,705	4,200	-496	-11.8%
62	1,199	1,600	-401	-25.1%

- (1) Averages rounded to the nearest boarding, data as reported by NFS and/or APC system, depending on year; Lifelines excluded.
- (2) As a result of the SARS-CoV-2 pandemic, rides were fare-free beginning March 22, 2020; many bus routes continued reporting YOY gains in December 2021, since December 2020 showed clear reduction effects on ridership from the SARS-CoV-2 pandemic. Fares were reinstated June 1, 2021, and ridership data from the farebox system rather than the automatic passenger counter system is utilized from that date going forward.

DAILY METROBUS RIDERSHIP SINCE FEBRUARY 1, 2020



- (1) National Emergency was declared on 3/13/20 as a result of the SARS-CoV-2 pandemic.
- (2) There was no Metrobus, Metrorail and Metromover service on 5/31/20, as a safety precaution.
- (3) The dip at the start of the second week of November 2020 is due to Hurricane Eta.
- (4) The reduction seen beginning 6/1/21 is partly due to the resumption of fares and partly the result of resuming reporting Cubic farebox data rather than bus APC counts.
- (5) Periodic (weekly) variations are prominent, since weekday ridership is almost always significantly higher than weekend or holiday ridership.

METROBUS PARKING PATRONAGE SUMMARY

December 2021

PARK-RIDE LOT	ACTUAL AVAILABLE SPACES	ACTUAL OCCUPANCY	PERCENT OCCUPANCY
Transitway / SW 152nd St	200	89	45%
Transitway / SW 168th St	149	70	47%
Transitway / SW 200th Street (effective February 2020)	100	26	26%
Transitway / SW 112 Ave (Target)	450	125	28%
Transitway / SW 244th St	95	26	27%
Transitway / SW 296th St	139	35	25%
Transitway / SW 344th St	248	121	49%
Coral Reef Drive 117/Tumpike	95	54	57%
Golden Glades - East Lot	535	243	45%
Golden Glades - West Lot	1,007	0	0%
Hammocks Town Center (SW 152 Ave / SW 104 St)	50	7	14%
Kendall Dr./SW 127th Ave	161	10	6%
West Kendall Transit Term (Kendall Dr / SW162 Ave)	40	6	15%
NW 7th Avenue Transit Village (NW 7 Ave / NW 62 St)	25	16	64%
Miami Gardens Dr. / NW 73rd Ave	136	0	0%
Dolphin Station (effective Mar 2020)	348	57	16%
I-75 / Miami Gardens Dr (effective June 2019)	298	0	0%
TOTAL	4,076	885	22%

Note: some park-ride lots are joint-use and the number of park-ride vehicles may exceed the number of spaces allocated.

Metrorail



METRORAIL AVERAGE WEEKDAY BOARDINGS BY STATION (†)

Weekdays	Average Weekday	Average Weekday	Percent Change	Average Weekday	Percent Change	Average Weekday	Percent Change	Average Weekday	Percent Change
STATIONS	Dec-21	Dec-20	YOY	Feb-20	Current vs Feb-20	Nov-21	MOM	Dec-19	YO2Y
ALLAPATTAH	1,142	1,209	-5.5%	1,942	-41.2%	1,145	-0.2%	1,791	-36.2%
BRICKELL	3,386	3,451	-1.9%	6,529	-48.1%	3,567	-5.1%	5,632	-39.9%
BROWNSVILLE	569	691	-17.7%	862	-34.0%	593	-4.1%	797	-28.6%
CIVIC CENTER	2,759	2,259	22.1%	6,143	-55.1%	3,120	-11.6%	5,119	-46.1%
COCONUT GROVE	1,075	919	17.0%	1,795	-40.1%	1,082	-0.6%	1,564	-31.2%
CULMER	776	842	-7.8%	1,392	-44.3%	830	-6.5%	1,215	-36.1%
DADELAND NORTH	2,807	2,518	11.5%	5,926	-52.6%	2,944	-4.7%	5,262	-46.7%
DADELAND SOUTH	3,208	2,790	15.0%	7,150	-55.1%	3,399	-5.6%	6,361	-49.6%
DOUGLAS ROAD	2,132	1,703	25.2%	3,624	-41.2%	2,272	-6.2%	3,152	-32.4%
DR. MARTIN LUTHER KING, JR.	703	766	-8.3%	1,157	-39.3%	717	-2.0%	1,083	-35.1%
EARLINGTON HEIGHTS	961	939	2.3%	1,662	-42.2%	948	1.3%	1,489	-35.5%
GOVERNMENT CENTER	4,723	3,150	49.9%	10,557	-55.3%	4,859	-2.8%	9,010	-47.6%
HIALEAH	809	695	16.5%	1,253	-35.4%	825	-1.9%	1,158	-30.1%
MIAMI INTERNATIONAL AIRPORT	947	663	42.8%	1,711	-44.6%	854	10.8%	1,659	-42.9%
NORTHSIDE	957	919	4.0%	1,476	-35.2%	970	-1.4%	1,324	-27.7%
OKEECHOBEE	613	600	2.0%	1,164	-47.4%	637	-3.9%	1,044	-41.3%
OVERTOWN / ARENA	981	707	38.8%	2,274	-56.9%	1,002	-2.0%	1,961	-50.0%
PALMETTO	804	708	13.5%	1,543	-47.9%	886	-9.3%	1,324	-39.3%
SANTA CLARA	466	482	-3.2%	812	-42.5%	472	-1.2%	726	-35.7%
SOUTH MIAMI	1,480	1,238	19.6%	3,015	-50.9%	1,536	-3.7%	2,596	-43.0%
TRI-RAIL	739	706	4.7%	1,207	-38.8%	720	2.6%	1,099	-32.8%
UNIVERSITY	944	453	108.4%	2,784	-66.1%	1,278	-26.1%	1,723	-45.2%
VIZCAYA	842	690	22.0%	1,390	-39.4%	851	-1.1%	1,187	-29.1%
TOTAL	33,822	29,097	16.2%	67,367	-49.8%	35,508	-4.7%	58,274	-42.0%

(†) In this table and those which follow, "YOY" stands for "year-over-year", "MOM" for "month-over-month" and "YO2Y" for "year over two years", i.e., current month vs 12 months prior, one month prior and 24 months prior, respectively.

(*) Due to effects from the SARS-CoV-2 pandemic; rides were fare-free beginning March 22, 2020; fares were reinstated on June 1, 2021, in part accounting for the drop in ridership from May 2021.

METRORAIL AVERAGE SATURDAY BOARDINGS BY STATION

Saturdays	Average Saturday	Average Saturday	Percent Change	Average Saturday	Percent Change	Average Saturday	Percent Change	Average Saturday	Percent Change
STATIONS	Dec-21	Dec-20	YOY	Feb-20	Current vs Feb-20	Nov-21	MOM	Dec-19	YO2Y
ALLAPATTAH	631	807	-21.8%	1,051	-40.0%	643	-1.8%	1,024	-38.3%
BRICKELL	1,780	2,188	-18.6%	2,811	-36.7%	1,885	-5.6%	2,713	-34.4%
BROWNSVILLE	330	631	-47.7%	520	-36.6%	374	-12.0%	507	-35.0%
CIVIC CENTER	521	626	-16.7%	959	-45.7%	547	-4.7%	904	-42.4%
COCONUT GROVE	567	603	-5.9%	928	-38.9%	621	-8.6%	876	-35.2%
CULMER	372	538	-30.7%	721	-48.3%	406	-8.2%	704	-47.1%
DADELAND NORTH	1,131	1,506	-24.9%	1,994	-43.3%	1,239	-8.7%	1,985	-43.0%
DADELAND SOUTH	1,414	1,837	-23.0%	2,625	-46.2%	1,499	-5.7%	2,554	-44.6%
DOUGLAS ROAD	894	961	-7.0%	1,319	-32.3%	974	-8.2%	1,291	-30.8%
DR. MARTIN LUTHER KING, JR.	373	526	-29.2%	625	-40.3%	397	-6.2%	607	-38.6%
EARLINGTON HEIGHTS	562	635	-11.6%	935	-40.0%	549	2.2%	900	-37.6%
GOVERNMENT CENTER	2,177	1,942	12.1%	4,262	-48.9%	2,232	-2.5%	3,668	-40.7%
HIALEAH	411	431	-4.7%	583	-29.5%	434	-5.4%	570	-27.9%
MIAMI INTERNATIONAL AIRPORT	769	613	25.5%	1,330	-42.2%	729	5.5%	1,283	-40.1%
NORTHSIDE	587	705	-16.8%	878	-33.2%	621	-5.5%	801	-26.8%
OKEECHOBEE	269	316	-14.7%	408	-34.1%	279	-3.7%	386	-30.2%
OVERTOWN / ARENA	392	451	-13.1%	678	-42.2%	385	1.8%	570	-31.2%
PALMETTO	250	319	-21.5%	458	-45.4%	295	-15.1%	392	-36.1%
SANTA CLARA	236	328	-28.2%	422	-44.1%	269	-12.4%	419	-43.7%
SOUTH MIAMI	710	746	-4.8%	1,256	-43.4%	741	-4.1%	1,147	-38.1%
TRI-RAIL	311	453	-31.3%	614	-49.3%	329	-5.5%	557	-44.1%
UNIVERSITY	358	233	53.3%	714	-49.9%	407	-12.2%	532	-32.8%
VIZCAYA	396	434	-8.9%	622	-36.4%	387	2.3%	601	-34.2%
TOTAL	15,438	17,825	-13.4%	26,714	-42.2%	16,240	-4.9%	24,987	-38.2%

METRORAIL AVERAGE SUNDAY BOARDINGS BY STATION

Sundays	Average Sunday	Average Sunday	Percent Change	Average Sunday	Percent Change	Average Sunday	Percent Change	Average Sunday	Percent Change
STATIONS	Dec-21	Dec-20	YOY	Feb-20	Current vs Feb-20	Nov-21	MOM	Dec-19	YO2Y
ALLAPATTAH	517	611	-15.3%	791	-34.6%	489	5.9%	765	-32.4%
BRICKELL	1,632	1,662	-1.8%	2,379	-31.4%	1,494	9.2%	2,049	-20.4%
BROWNSVILLE	262	443	-40.9%	406	-35.6%	272	-3.8%	367	-28.8%
CIVIC CENTER	433	569	-23.9%	791	-45.3%	426	1.6%	715	-39.5%
COCONUT GROVE	514	454	13.3%	838	-38.7%	466	10.4%	683	-24.8%
CULMER	337	447	-24.6%	616	-45.3%	315	7.1%	563	-40.1%
DADELAND NORTH	981	1,173	-16.4%	1,685	-41.8%	966	1.6%	1,516	-35.3%
DADELAND SOUTH	1,221	1,286	-5.1%	2,210	-44.8%	1,212	0.7%	2,050	-40.5%
DOUGLAS ROAD	732	677	8.1%	1,090	-32.8%	684	7.0%	949	-22.8%
DR. MARTIN LUTHER KING, JR.	311	346	-10.0%	506	-38.5%	310	0.3%	467	-33.4%
EARLINGTON HEIGHTS	458	509	-10.2%	799	-42.8%	440	4.0%	715	-36.0%
GOVERNMENT CENTER	1,884	1,412	33.4%	4,044	-53.4%	1,721	9.5%	2,848	-33.9%
HIALEAH	304	286	6.4%	472	-35.6%	302	0.8%	442	-31.2%
MIAMI INTERNATIONAL AIRPORT	820	534	53.5%	1,343	-39.0%	776	5.6%	1,303	-37.1%
NORTHSIDE	478	543	-11.9%	653	-26.7%	475	0.7%	645	-25.8%
OKEECHOBEE	178	221	-19.5%	273	-35.0%	180	-1.3%	251	-29.2%
OVERTOWN / ARENA	372	402	-7.5%	544	-31.7%	341	9.1%	473	-21.5%
PALMETTO	181	190	-4.6%	336	-46.1%	169	7.4%	254	-28.6%
SANTA CLARA	176	208	-15.3%	280	-36.9%	162	8.6%	274	-35.8%
SOUTH MIAMI	591	527	12.3%	987	-40.1%	560	5.6%	818	-27.7%
TRI-RAIL	329	309	6.6%	528	-37.6%	276	19.4%	459	-28.3%
UNIVERSITY	262	160	63.2%	608	-57.0%	362	-27.8%	380	-31.1%
VIZCAYA	331	316	4.7%	524	-36.9%	311	6.3%	458	-27.7%
TOTAL	13,301	13,282	0.1%	22,701	-41.4%	12,705	4.7%	19,444	-31.6%

METRORAIL TOTAL MONTHLY BOARDINGS BY STATION

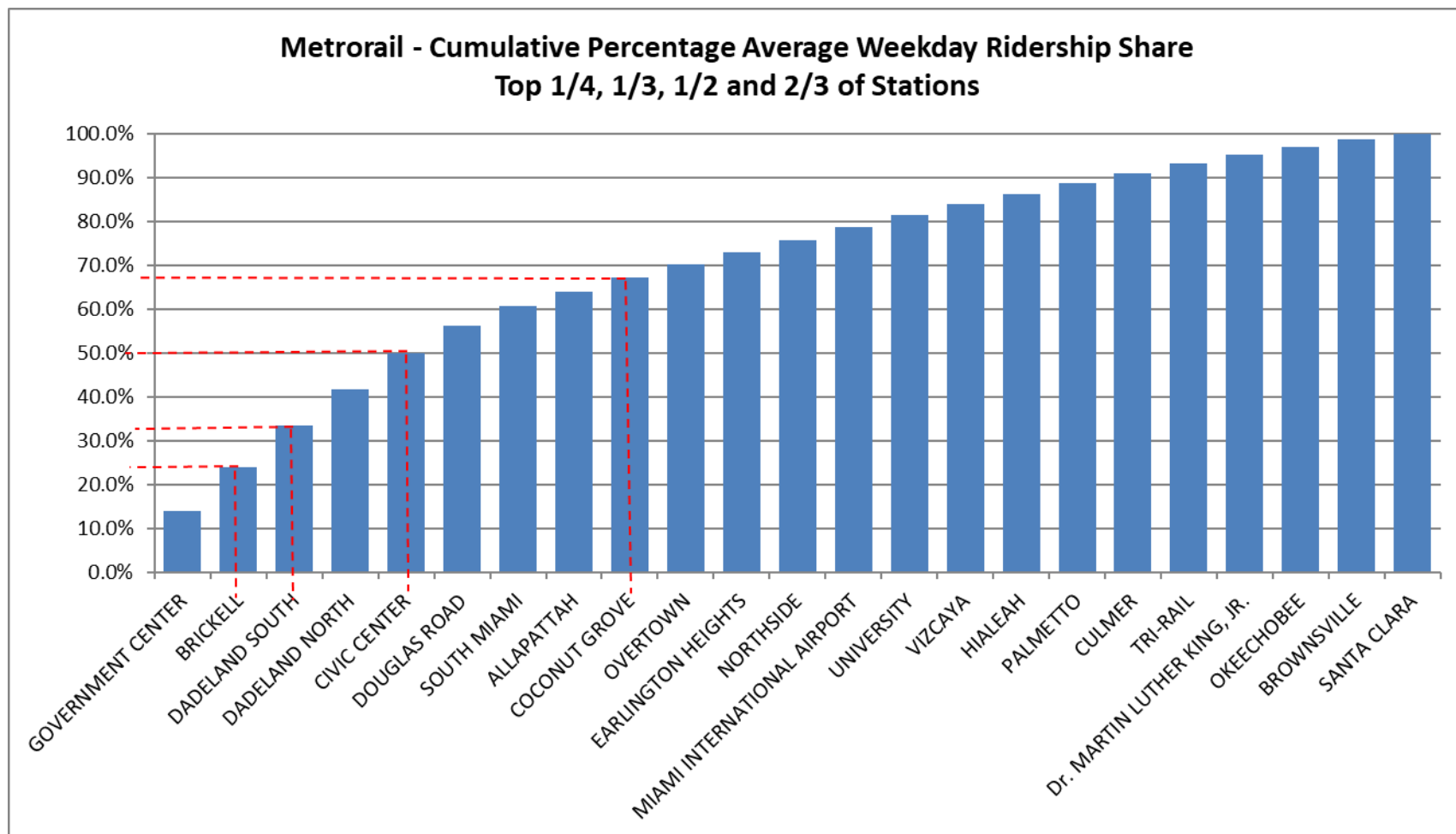
Monthly Totals	Total Month	Total Month	Percent Change	Total Month	Percent Change	Total Month	Percent Change	Total Month	Percent Change
STATIONS	Dec-21	Dec-20	YOY	Feb-20	Current vs Feb-20	Nov-21	MOM	Dec-19	YO2Y
ALLAPATTAH	30,100	32,773	-8.2%	46,868	-35.8%	28,551	5.4%	46,115	-34.7%
BRICKELL	88,801	92,403	-3.9%	152,259	-41.7%	88,150	0.7%	140,626	-36.9%
BROWNSVILLE	15,100	19,891	-24.1%	21,285	-29.1%	15,085	0.1%	20,907	-27.8%
CIVIC CENTER	63,100	54,909	14.9%	128,921	-51.1%	67,155	-6.0%	115,225	-45.2%
COCONUT GROVE	28,268	24,769	14.1%	43,580	-35.1%	27,033	4.6%	40,180	-29.6%
CULMER	20,093	22,873	-12.2%	33,497	-40.0%	20,184	-0.5%	31,607	-36.4%
DADELAND NORTH	69,887	66,604	4.9%	132,894	-47.4%	69,504	0.6%	126,644	-44.8%
DADELAND SOUTH	81,067	75,086	8.0%	162,416	-50.1%	81,261	-0.2%	155,214	-47.8%
DOUGLAS ROAD	53,340	44,637	19.5%	82,141	-35.1%	53,388	-0.1%	76,657	-30.4%
DR. MARTIN LUTHER KING, JR.	18,364	14,113	30.1%	27,980	-34.4%	17,772	3.3%	27,876	-34.1%
EARLINGTON HEIGHTS	25,546	25,671	-0.5%	40,697	-37.2%	23,946	6.7%	38,994	-34.5%
GOVERNMENT CENTER	120,733	84,191	43.4%	243,414	-50.4%	115,570	4.5%	220,083	-45.1%
HIALEAH	20,762	18,393	12.9%	29,516	-29.7%	20,244	2.6%	29,152	-28.8%
MIAMI INTERNATIONAL AIRPORT	27,971	19,721	41.8%	46,115	-39.3%	24,493	14.2%	47,614	-41.3%
NORTHSIDE	25,735	26,082	-1.3%	36,127	-28.8%	24,870	3.5%	34,603	-25.6%
OKEECHOBEE	15,223	15,547	-2.1%	26,026	-41.5%	15,012	1.4%	24,935	-38.9%
OVERTOWN / ARENA	24,503	19,164	27.9%	49,911	-50.9%	23,257	5.4%	46,185	-46.9%
PALMETTO	19,125	17,795	7.5%	33,944	-43.7%	20,074	-4.7%	30,789	-37.9%
SANTA CLARA	11,979	12,928	-7.3%	19,245	-37.8%	11,587	3.4%	18,484	-35.2%
SOUTH MIAMI	37,715	32,757	15.1%	69,412	-45.7%	36,902	2.2%	63,913	-41.0%
TRI-RAIL	18,711	18,822	-0.6%	29,120	-35.7%	17,262	8.4%	27,850	-32.8%
UNIVERSITY	22,889	11,679	96.0%	61,253	-62.6%	29,203	-21.6%	40,389	-43.3%
VIZCAYA	21,424	18,386	16.5%	32,497	-34.1%	20,378	5.1%	29,886	-28.3%
TOTAL	860,436	769,194	11.9%	1,549,118	-44.5%	850,881	1.1%	1,433,928	-40.0%

METRORAIL HOLIDAY BOARDINGS BY STATION

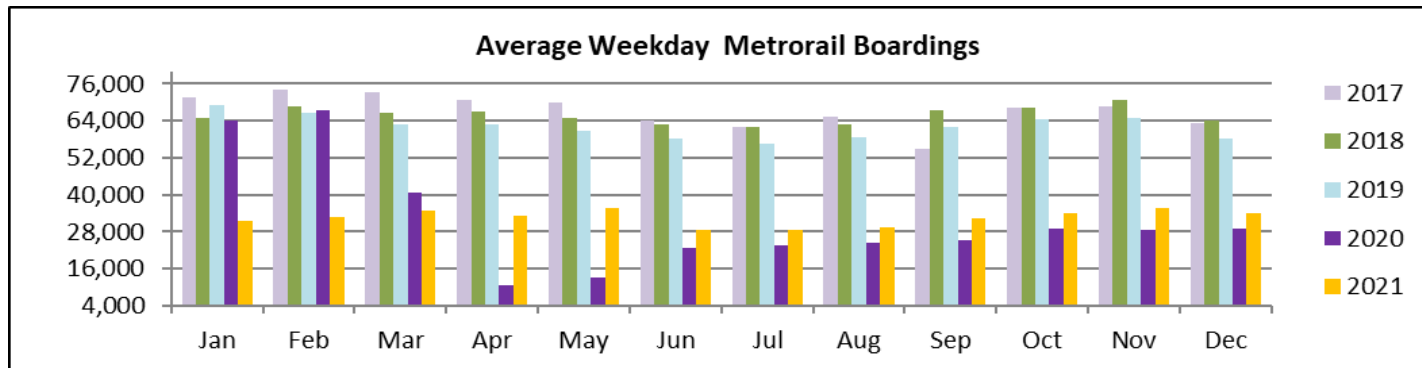
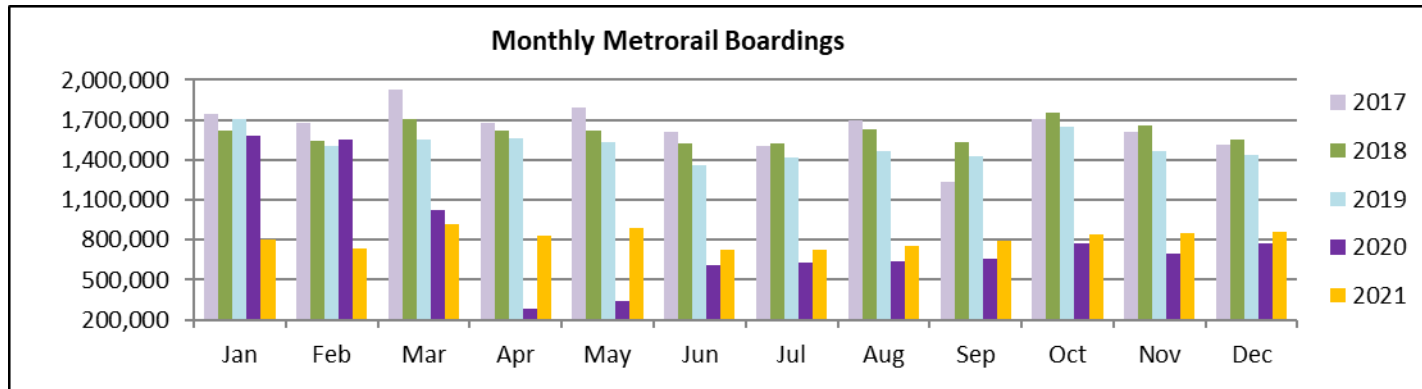
	Christmas Day	Christmas Eve (*)	Percent Change	New Year's Day	New Year's Eve (*)	Percent Change
STATIONS	2020	2021	21 vs 20	2021	2021	21 vs 20
ALLAPATTAH	513	763	48.7%	640	758	18.4%
BRICKELL	1,084	1,994	83.9%	1,749	2,054	17.4%
BROWNSVILLE	403	395	-2.0%	456	397	-12.9%
CIVIC CENTER	433	668	54.3%	524	672	28.2%
COCONUT GROVE	321	642	100.0%	397	724	82.4%
CULMER	412	453	10.0%	448	507	13.2%
DADELAND NORTH	488	1,285	163.3%	718	1,208	68.2%
DADELAND SOUTH	1,221	1,498	22.7%	1,400	1,673	19.5%
DOUGLAS ROAD	625	943	50.9%	800	1,112	39.0%
DR. MARTIN LUTHER KING, JR.		413			461	
EARLINGTON HEIGHTS	431	629	45.9%	530	668	26.0%
GOVERNMENT CENTER	1,472	2,271	54.3%	1,605	3,027	88.6%
HIALEAH	242	453	87.2%	282	457	62.1%
MIAMI INTERNATIONAL AIRPORT	547	845	54.5%	675	886	31.3%
NORTHSIDE	865	693	-19.9%	632	695	10.0%
OKEECHOBEE	195	307	57.4%	237	266	12.2%
OVERTOWN / ARENA	205	429	109.3%	374	412	10.2%
PALMETTO	188	268	42.6%	182	254	39.6%
SANTA CLARA	179	294	64.2%	221	241	9.0%
SOUTH MIAMI	442	679	53.6%	652	755	15.8%
TRI-RAIL	252	309	22.6%	287	327	13.9%
UNIVERSITY	138	251	81.9%	189	332	75.7%
VIZCAYA	208	421	102.4%	274	421	53.6%
TOTAL	10,864	16,903	55.6%	13,272	18,307	37.9%

(*) Corresponding County-observed holiday for each year..

METRORAIL CUMULATIVE PERCENTAGE RIDERSHIP SHARE



TOTAL MONTHLY AND AVERAGE WEEKDAY RIDERSHIP YEAR OVER YEAR COMPARISON CHARTS – METRORAIL



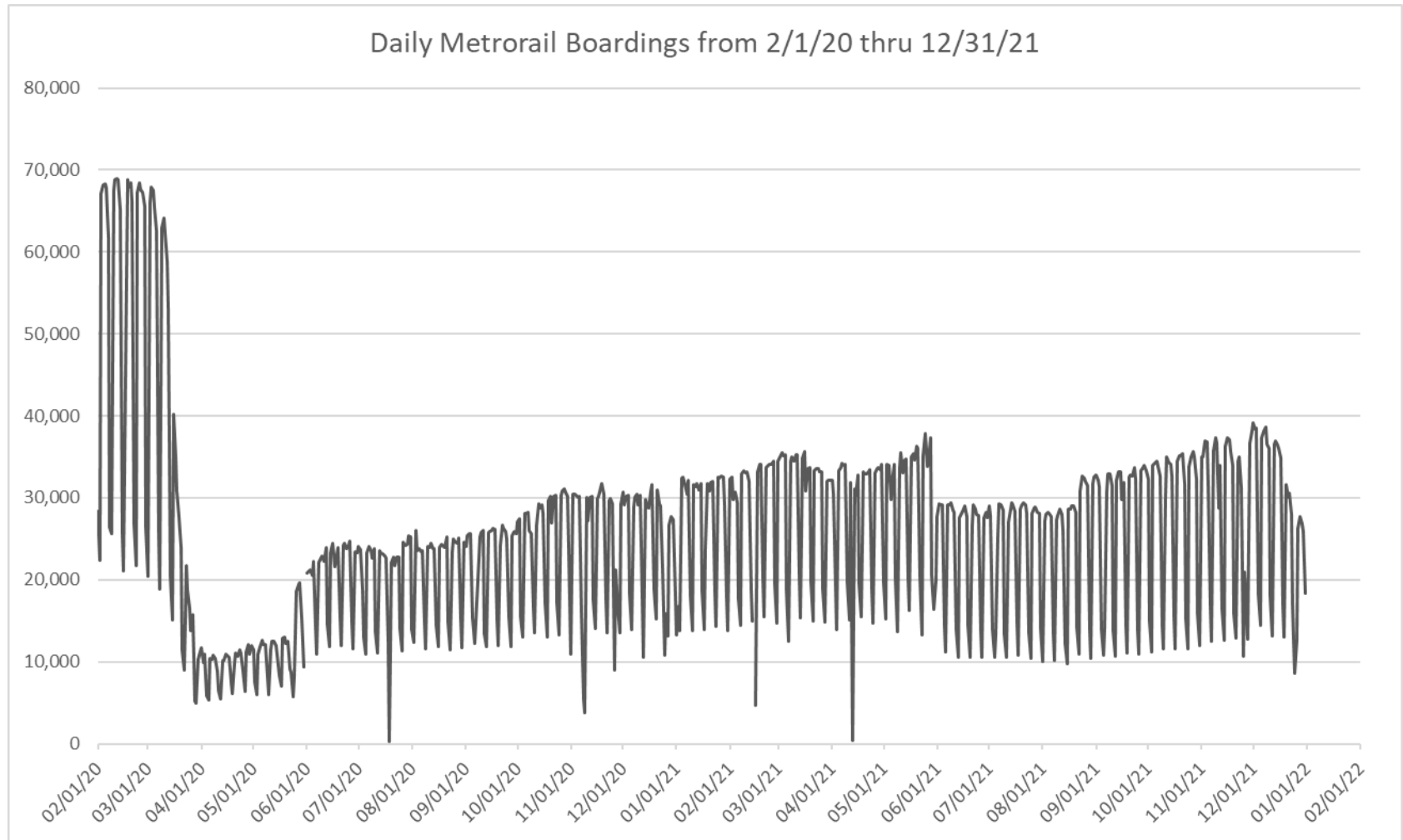
**“TOP 5 / BOTTOM 5” RAIL STATIONS AVERAGE WEEKDAY RIDERSHIP PERFORMANCE
YEAR OVER YEAR COMPARISONS**

Station	Dec-21	Dec-20	Absolute Delta (1)	Percent Delta
GOVERNMENT CENTER	4,723	3,150	1,573	49.9%
CIVIC CENTER	2,759	2,259	500	22.1%
UNIVERSITY	944	453	491	108.4%
DOUGLAS ROAD	2,132	1,703	430	25.2%
DADELAND SOUTH	3,208	2,790	418	15.0%
BROWNSVILLE	569	691	-122	-17.7%
ALLAPATTAH	1,142	1,209	-66	-5.5%
CULMER	776	842	-66	-7.8%
BRICKELL	3,386	3,451	-65	-1.9%
Dr. MARTIN LUTHER KING, JR.	703	766	-64	-8.3%

(1) Averages rounded to the nearest boarding.

(2) As a result of the SARS-CoV-2 pandemic, rides were fare-free beginning March 22, 2020; many rail stations continued reporting YOY gains in December 2021, since December 2020 showed clear reduction effects on ridership from the SARS-CoV-2 pandemic. Fares were reinstated June 1, 2021, and ridership data from the faregate system rather than the video camera counter system is utilized from that date going forward.

DAILY METRORAIL RIDERSHIP SINCE FEBRUARY 1, 2020



- (1) National Emergency was declared on 3/13/20 as a result of the SARS-CoV-2 pandemic.
- (2) There was no Metrobus, Metrorail and Metromover service on 5/31/20, as a safety precaution.
- (3) The dip at the start of the second week of November 2020 is due to Hurricane Eta; these are *raw data* from the Unleash Live contractor AI video system.
- (4) The dip on 4/13/21 is due to a loss of connectivity at all stations, affecting a few stations over the next two days as well.
- (5) The reduction seen beginning 6/1/21 is partly due to the resumption of fares and partly the result of resuming reporting Cubi faregate data rather than video camera counts.
- (6) Periodic (weekly) variations are prominent, since weekday ridership is almost always significantly higher than weekend or holiday ridership.

METRORAIL PARKING PATRONAGE SUMMARY

December 2021

PARK-RIDE LOT	ACTUAL CAPACITY (1)	ACTUAL OCCUPANCY (2)	PERCENT OCCUPANCY
DADELAND SOUTH	1,260	633	50%
DADELAND NORTH	1,963	802	41%
SOUTH MIAMI	837	275	33%
UNIVERSITY	230	83	36%
DOUGLAS ROAD	220	202	92%
COCONUT GROVE	100		
VIZCAYA	120	37	31%
CULMER	40	9	22%
SANTA CLARA	61	41	67%
ALLAPATTAH	74	4	5%
EARLINGTON HEIGHTS	361	124	34%
BROWNSVILLE	100	52	52%
DR. MARTIN LUTHER KING JR. (MDT)	62		
DR. MARTIN LUTHER KING JR. (GARAGE)	631		
NORTHSIDE	100	63	63%
HIALEAH	338	52	15%
OKEECHOBEE	1,256	126	10%
PALMETTO	700	137	20%
TOTAL	8,453	2,640	31%

- (1) Number of spaces could vary each week; shown are available spaces during final week of month, as submitted by DTPW Safety & Security office.
- (2) All sampled occupancy data provided by DTPW Safety & Security office; calculations are corrections to those submitted by that entity.
- (3) Daily averages rounded to nearest unit, with fewer counts at some stations due to shortage of DTPW Safety & Security office staff; calculations are based on sampled counted days only per raw data submitted, with resulting average daily occupancy shown.
- (*) Closed throughout the month, per the DTPW Safety & Security office.

Metromover



METROMOVER MONTHLY AND AVERAGE DAILY BOARDINGS BY STATION

	Average Weekday	Average Weekday	Percent Change	Average Saturday	Average Saturday	Percent Change	Average Sunday	Average Sunday	Percent Change	Total Monthly	Total Monthly	Percent Change
STATIONS	Dec-21	Dec-20	21 vs 20	Dec-21	Dec-20	21 vs 20	Dec-21	Dec-20	21 vs 20	Dec-21	Dec-20	21 vs 20
School Board	750	433	73.2%	641	373	71.9%	554	321	72.9%	21,990	12,604	74.5%
Omni	1,576	468	237.0%	1,395	443	214.8%	1,220	382	219.2%	46,088	13,918	231.1%
Museum Park	288	106	172.6%	307	134	129.3%	313	116	170.2%	9,097	2,875	216.4%
Eleventh Street	266	186	42.9%	179	124	44.4%	170	104	63.0%	7,331	5,101	43.7%
Park West	363	205	77.4%	402	150	168.9%	252	126	100.4%	10,599	5,777	83.5%
Freedom Tower												
Government Center	2,178	1,213	79.5%	1,580	943	67.5%	1,418	786	80.4%	61,449	34,573	77.7%
Miami Avenue	267	212	26.0%	213	169	26.4%	171	160	6.5%	4,540	6,109	-25.7%
Third Street	283	168	69.1%	201	147	36.7%	189	128	46.9%	7,972	4,137	92.7%
Knight Center	411	278	48.1%	242	166	46.4%	226	175	29.4%	11,107	7,645	45.3%
Bayfront Park	1,683	989	70.1%	1,436	985	45.9%	1,352	827	63.5%	49,754	30,039	65.6%
First Street	743	591	25.6%	703	497	41.4%	615	392	57.1%	18,976	13,863	36.9%
College/Bayside	1,037	641	61.7%	940	541	73.6%	917	480	91.2%	14,785	15,219	-2.9%
College North	556	217	156.0%	365	127	187.8%	318	96	231.9%	15,173	5,831	160.2%
Wilkie D. Ferguson	837	318	162.7%	620	277	123.5%	564	253	122.8%	23,618	8,433	180.1%
Riverwalk	374	256	46.3%	302	220	37.2%	290	177	63.8%	10,479	7,415	41.3%
Fifth Street	360	207	73.9%	280	134	109.5%	214	112	91.3%	10,112	5,652	78.9%
Eighth Street	1,436	681	110.8%	1,178	716	64.5%	1,071	618	73.3%	41,622	20,711	101.0%
Tenth Street	614	355	73.0%	477	279	70.8%	454	228	99.5%	17,767	9,994	77.8%
Brickell	1,894	1,195	58.5%	1,471	1,158	27.0%	1,385	978	41.6%	54,508	30,303	79.9%
Financial District	659	403	63.5%	419	241	73.7%	409	205	99.7%	13,353	10,820	23.4%
TOTAL	16,572	9,120	81.7%	13,350	7,822	70.7%	12,100	6,661	81.6%	450,320	251,019	79.4%

(1) Freedom Tower Station was closed for construction.

(*) APC system did not report boardings data at several stations on several days in December 2021; the average daily ridership calculations take this into account.

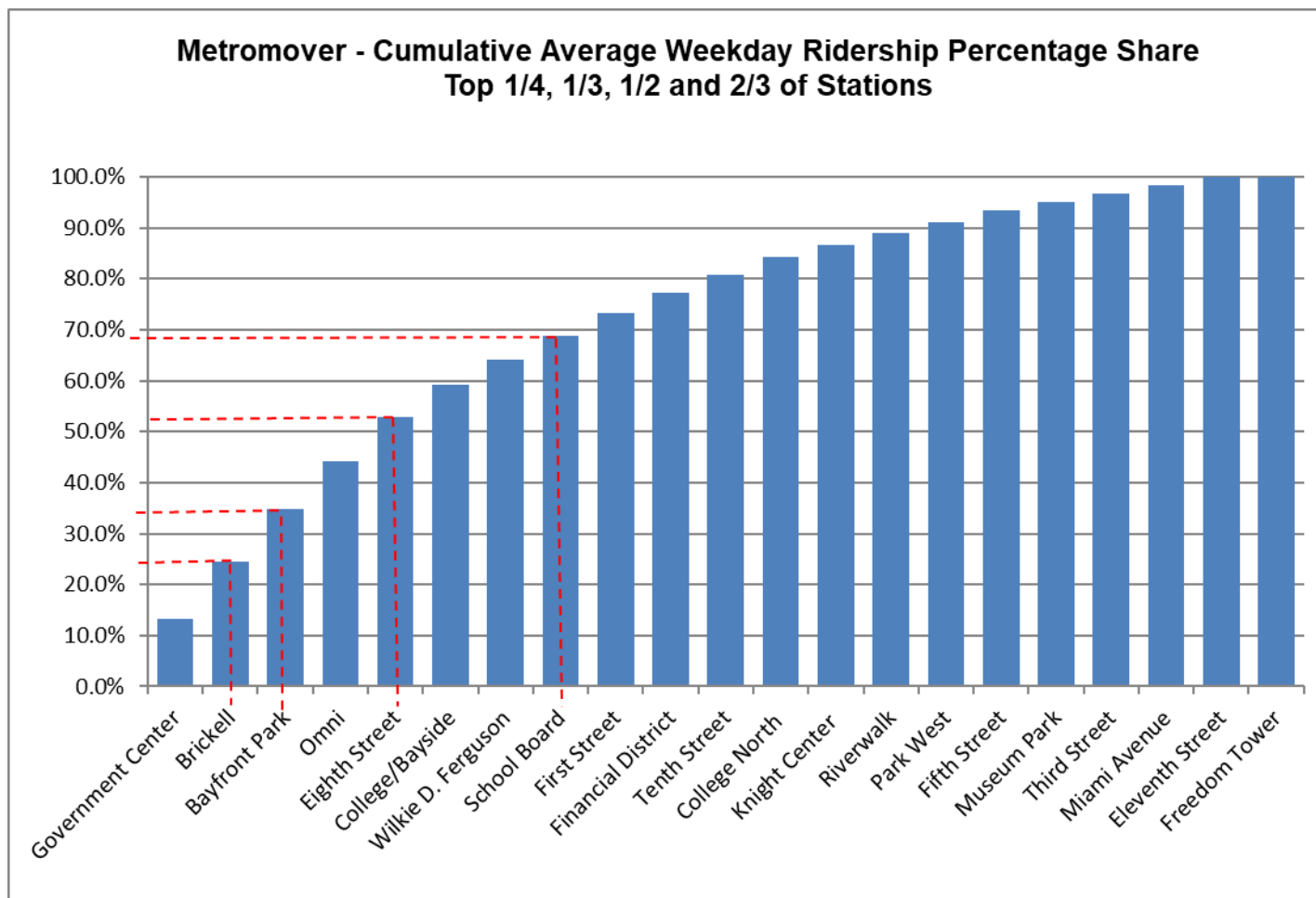
METROMOVER HOLIDAY BOARDINGS BY STATION

	Christmas Day	Christmas Eve (*)	Percent Change	New Year's Day	New Year's Eve (*)
STATIONS	2020	2021	21 vs 20	2021	2021
School Board	303	647	113.5%	383	808
Omni	328	1,152	251.2%	521	1,377
Museum Park	121	255	110.7%	100	322
Eleventh Street	97	147	51.5%	114	210
Park West	171	122	-28.7%	173	232
Freedom Tower (**)					
Government Center	969	1,649	70.2%	828	2,078
Miami Avenue	138	190	37.7%	113	0
Third Street	127	204	60.6%	115	258
Knight Center	178	258	44.9%	220	345
Bayfront Park	1,027	1,173	14.2%	1,084	2,080
First Street	160			286	909
College/Bayside	617	803	30.1%	589	940
College North	166	315	89.8%	125	460
Wilkie D. Ferguson	196	532	171.4%		783
Riverwalk	205	112	-45.4%	318	151
Fifth Street	118	210	78.0%	160	368
Eighth Street	390	1,081	177.2%	601	1,397
Tenth Street	164	404	146.3%	293	754
Brickell		1,334		911	1,982
Financial District	171	436	155.0%	267	553
TOTAL	5,646	11,024	95.3%	7,201	16,007

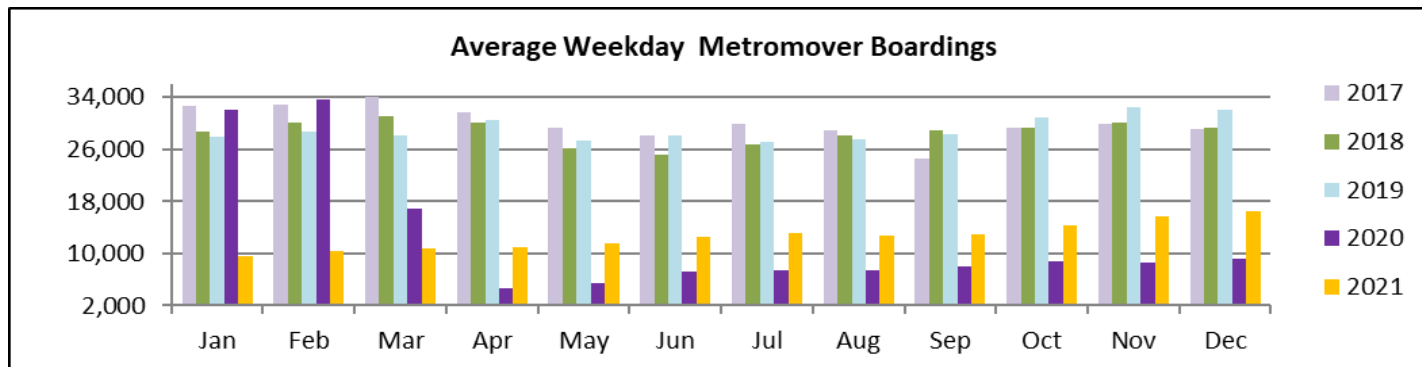
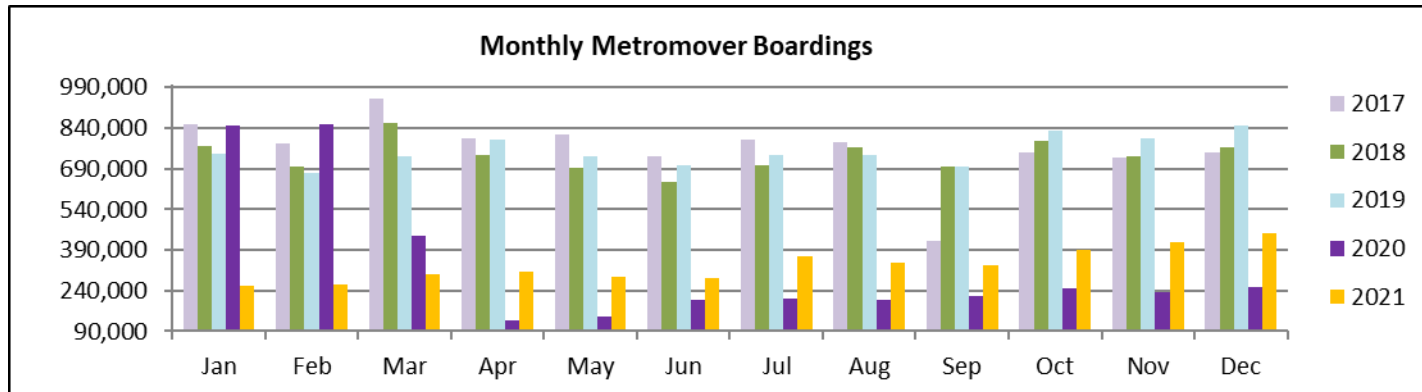
(*) Corresponding County-observed holiday for each year.

(**) Freedom Tower closed throughout.

METROMOVER CUMULATIVE PERCENTAGE RIDERSHIP SHARE



TOTAL MONTHLY AND AVERAGE WEEKDAY RIDERSHIP YEAR OVER YEAR COMPARISON CHARTS – METROMOVER



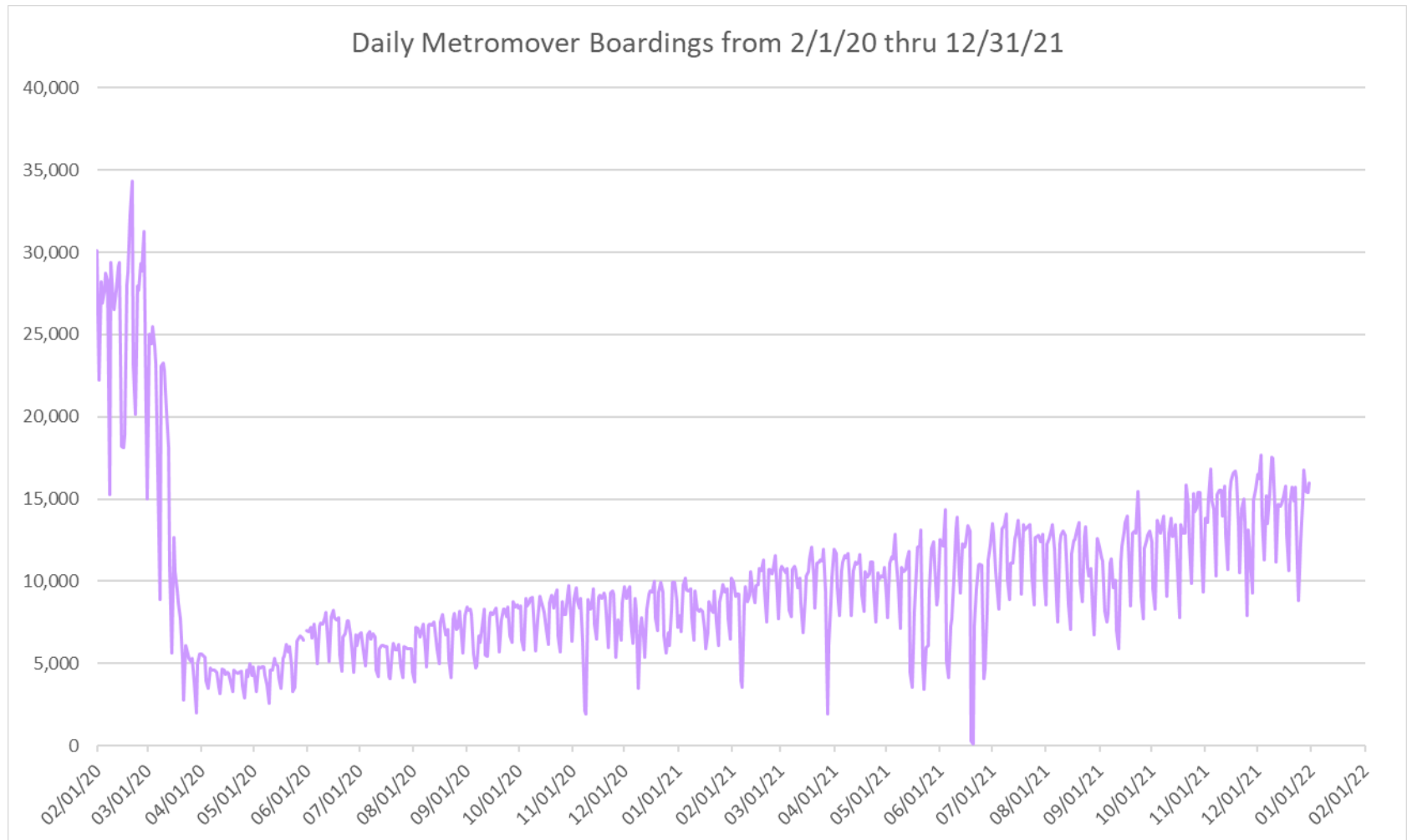
**“TOP 5 / BOTTOM 5” MOVER STATIONS AVERAGE WEEKDAY RIDERSHIP PERFORMANCE
YEAR OVER YEAR COMPARISONS**

Station	Dec-21	Dec-20	Absolute Delta (1)	Percent Delta
Omni	1,576	468	1,108	237.0%
Government Center	2,178	1,213	965	79.5%
Eighth Street	1,436	681	755	110.8%
Brickell	1,894	1,195	699	58.5%
Bayfront Park	1,683	989	694	70.1%
Miami Avenue	267	212	55	26.0%
Eleventh Street	266	186	80	42.9%
Third Street	283	168	116	69.1%
Riverwalk	374	256	118	46.3%
Knight Center	411	278	133	48.1%

(1) Averages rounded to the nearest boarding.

(†) All Metromover stations reporting YOY gains in December 2021, as December 2020 showed clear reduction effects on ridership from the SARS-CoV-2 pandemic.

DAILY METROMOVER RIDERSHIP SINCE FEBRUARY 1, 2020



- (1) National Emergency was declared on 3/13/20 as a result of the SARS-CoV-2 pandemic.
- (2) There was no Metrobus, Metrorail and Metromover service on 5/31/20, as a safety precaution.
- (3) The dip at the start of the second week of November 2020 is due to Hurricane Eta; these are *raw data* from the UTA contractor APC system. Other more recent dips are due to various station closures (mostly on weekends) for system maintenance purposes.
- (4) Periodic (weekly) variations are prominent, since weekday ridership is almost always significantly higher than weekend or holiday ridership.

Special Transportation Services

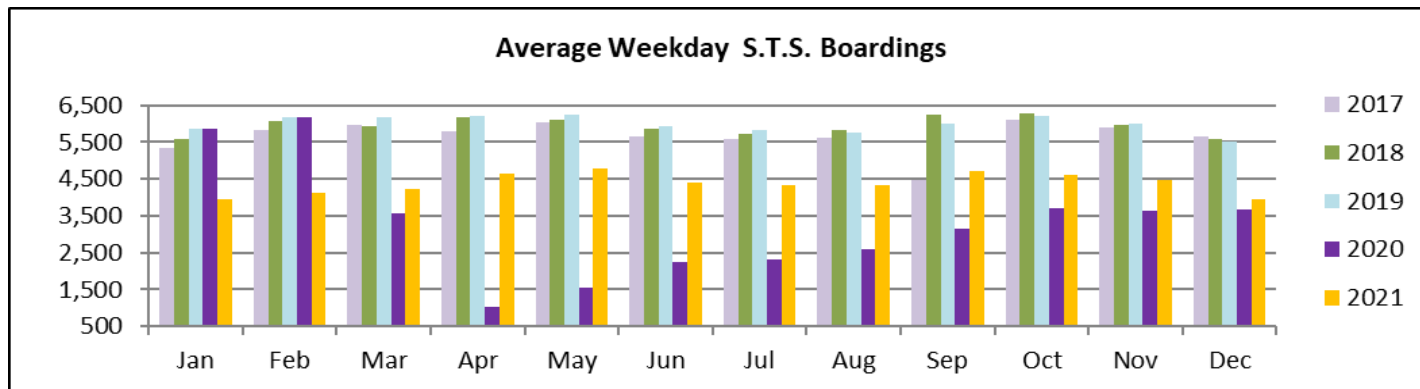
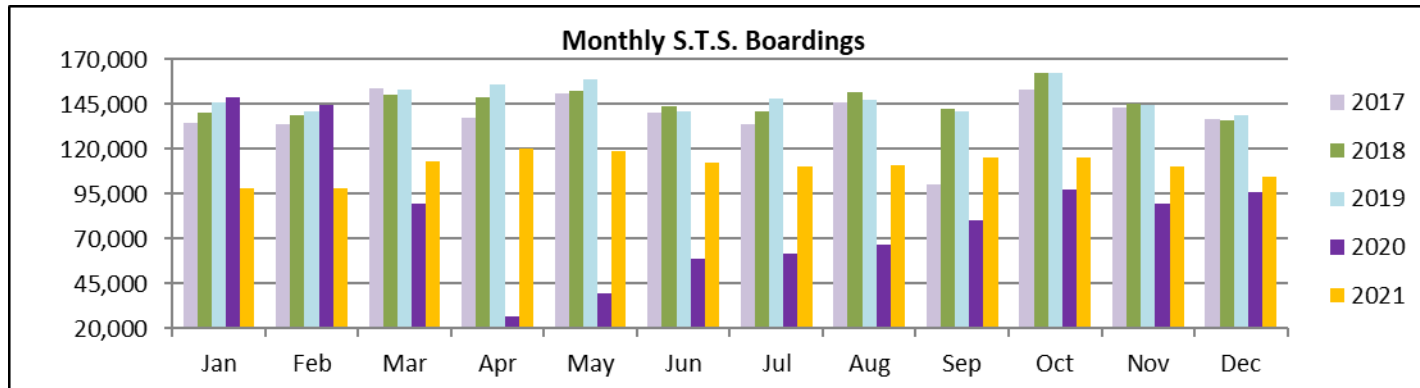


STS MONTHLY AND AVERAGE DAILY BOARDINGS **December 2021**

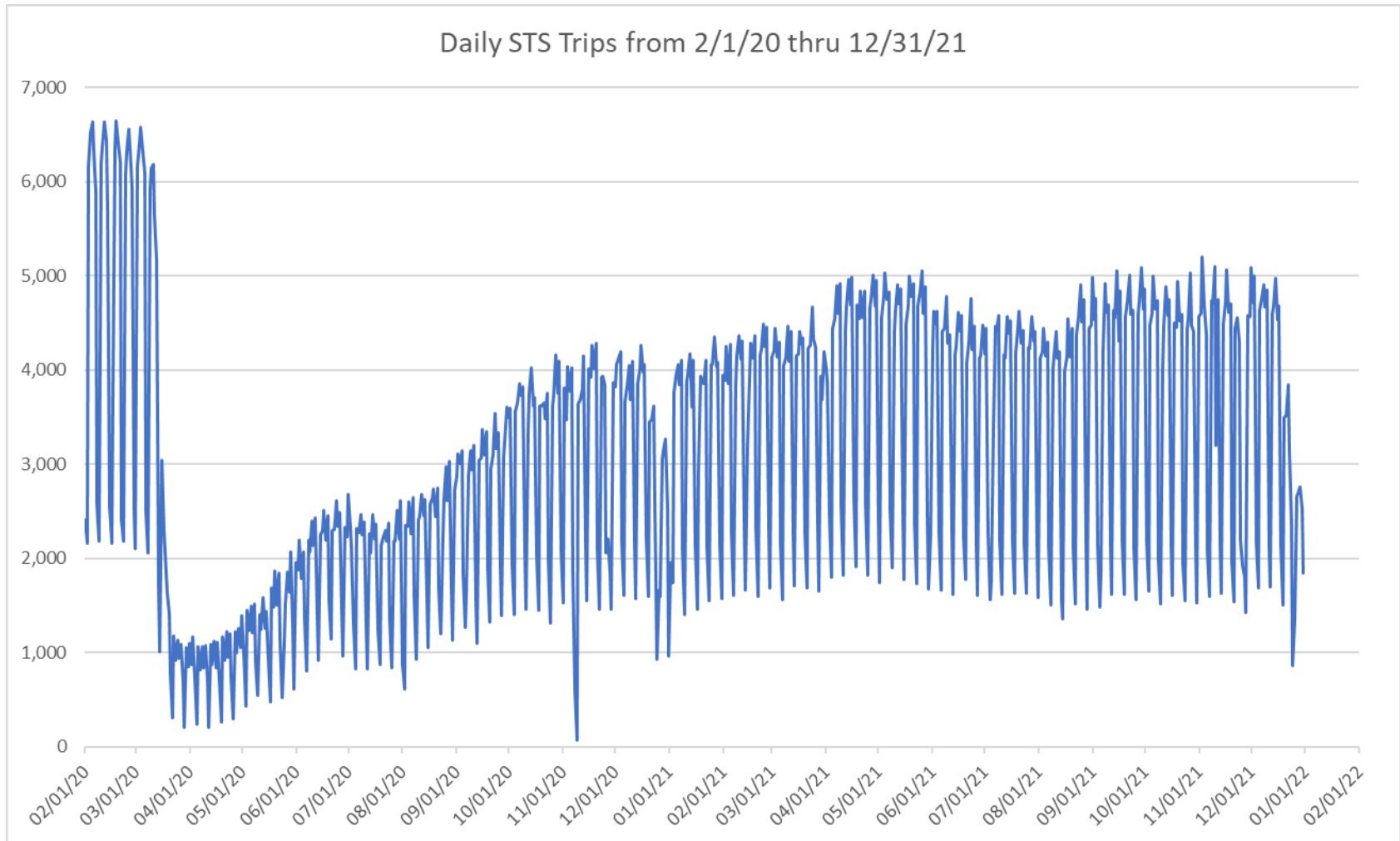
Measure	timeline	Ambulatory	Wheelchair	Total Clients (*)
Average Weekday	Dec-21	3,229	725	3,955
Average Saturday	Dec-21	1,443	382	1,825
Average Sunday	Dec-21	1,263	298	1,560
Total Monthly	Dec-21	85,094	19,402	104,496
Average Weekday	Dec-20	3,003	671	3,673
Average Saturday	Dec-20	1,665	394	2,059
Average Sunday	Dec-20	1,231	232	1,463
Total Monthly	Dec-20	78,881	17,485	96,366
Average Weekday	Dec-19	4,422	1,097	5,519
Average Saturday	Dec-19	2,002	578	2,580
Average Sunday	Dec-19	1,556	515	2,070
Total Monthly	Dec-19	110,207	28,435	138,642
% Change Current vs. Dec 2020 Weekday		7.5%	8.2%	7.7%
% Change Current vs. Dec 2020 Saturday		-13.4%	-3.0%	-11.4%
% Change Current vs. Dec 2020 Sunday		2.6%	28.6%	6.7%
% Change Current vs. Dec 2020 Month Total		7.9%	11.0%	8.4%
% Change Current vs. Dec 2019 Weekday		-27.0%	-33.9%	-28.3%
% Change Current vs. Dec 2019 Saturday		-27.9%	-33.9%	-29.3%
% Change Current vs. Dec 2019 Sunday		-18.8%	-42.1%	-24.6%
% Change Current vs. Dec 2019 Month Total		-22.8%	-31.8%	-24.6%

(*) Trip count data provided by STS contractor.

TOTAL MONTHLY AND AVERAGE WEEKDAY RIDERSHIP YEAR OVER YEAR COMPARISON CHARTS – SPECIAL TRANSPORTATION SERVICES (S.T.S.)

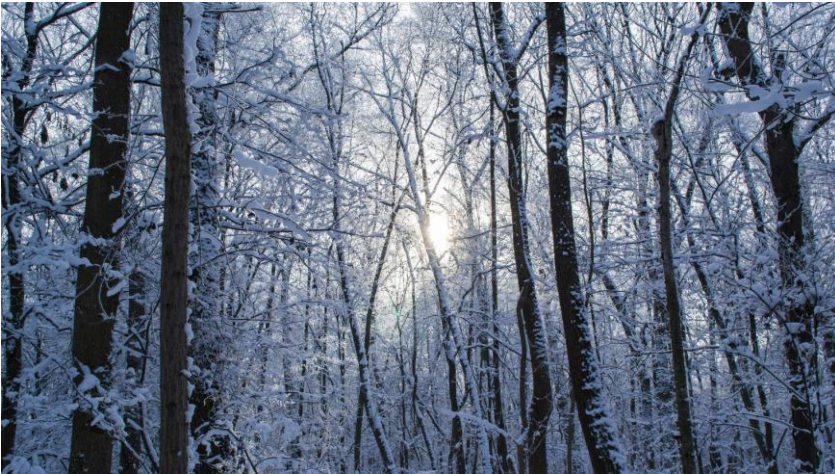


DAILY STS RIDERSHIP SINCE FEBRUARY 1, 2020

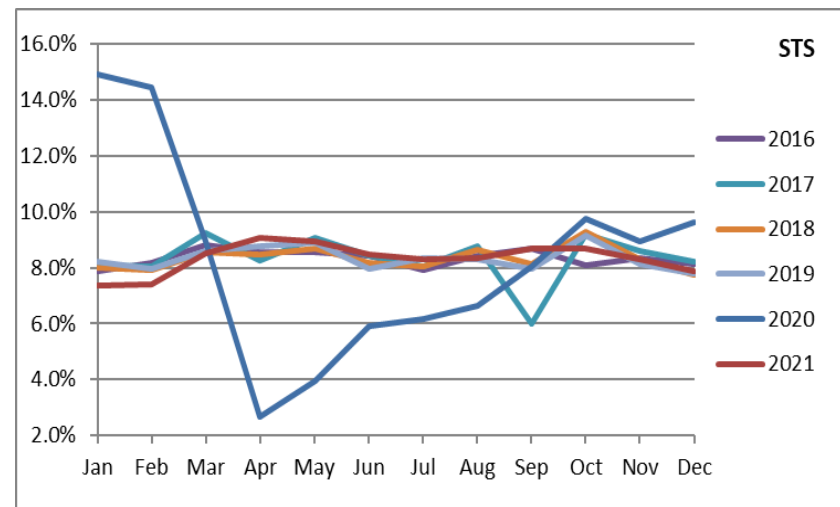
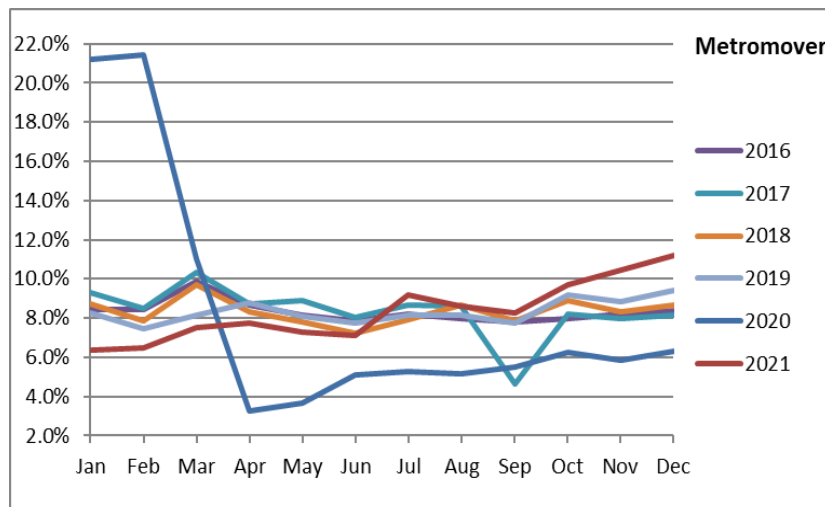
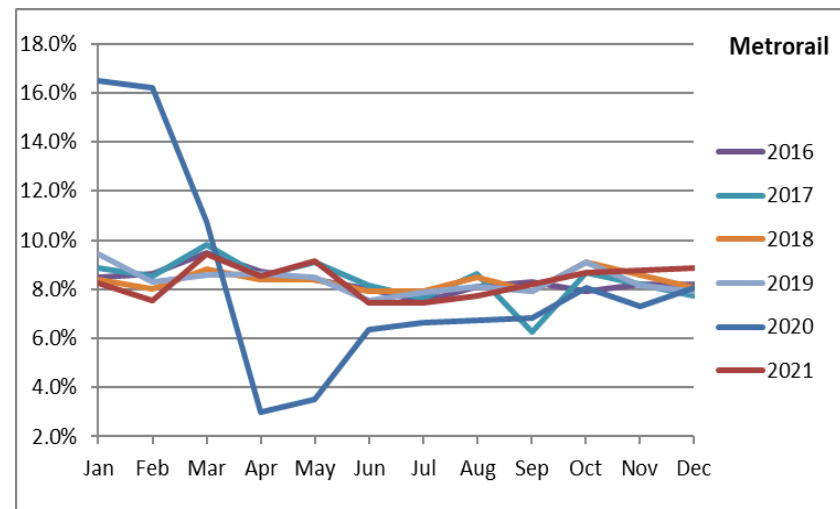
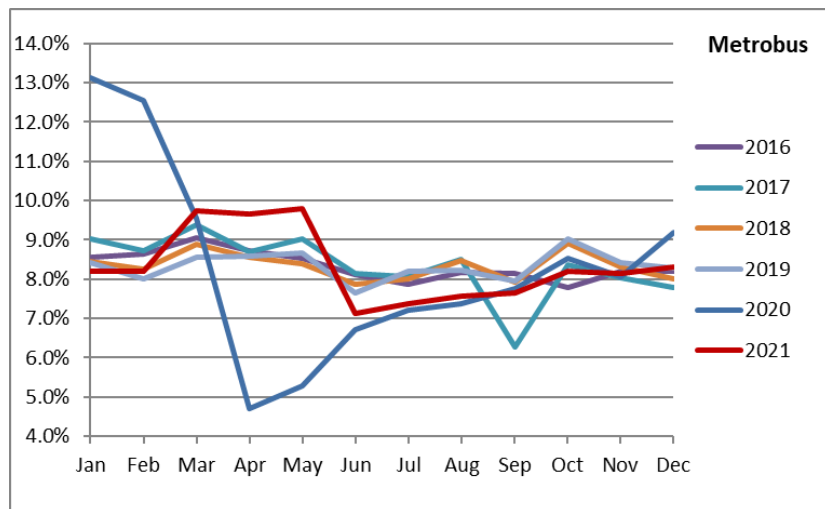


- (1) National Emergency was declared on 3/13/20 as a result of the SARS-CoV-2 pandemic.
- (2) The dip at the start of the second week of November 2020 is due to Hurricane Eta.
- (3) Periodic (weekly) variations are prominent, since weekday ridership is almost always significantly higher than weekend or holiday ridership.

Ridership Seasonality



RIDERSHIP SEASONALITY – PERCENT RIDERSHIP SHARE BY MONTH AND CALENDAR YEAR FOR EACH MODE



Note: the prominent dips seen in the fall of 2017 and beginning in the spring of 2020 are due to Hurricane Irma and the SARS-CoV-2 pandemic, respectively. Reductions in Bus and Rail ridership share seen beginning in June 2021 are due to reinstatement of fares as well changes in reporting tools and datasets, as discussed earlier in this report.