



TRANSPORTATION AND PUBLIC WORKS

RIDERSHIP TECHNICAL REPORT

Division of Performance and Materials Management



Table of Contents

<i>Table of Contents</i>	2-3
All Modes Overview	4
Total Monthly Weekday, Saturday and Sunday Monthly Boardings By Mode	5
Average Weekday, Saturday and Sunday Boardings by Mode	6
Metrobus Total Monthly Ridership Comparisons by Fiscal Year	7
Metrorail Total Monthly Ridership Comparisons by Fiscal Year	8
Metromover Total Monthly Ridership Comparisons by Fiscal Year	9
STS Total Monthly Ridership Comparisons by Fiscal Year	10
All-Modes Combined Total Monthly Ridership Comparisons By Fiscal Year	11
All Modes Combined Total Monthly and Average Weekday Ridership – Year over Year Comparison Charts	12
Average Weekday Ridership – Modal Splits	13
Daily Ridership for All Modes Combined since 2/1/20	14
Metrobus	15
Metrobus Average Weekday Boardings by Route	16-18
Metrobus Average Saturday Boardings by Route	19-20
Metrobus Average Sunday Boardings by Route	21-22
Metrobus Monthly Total Boardings by Route	23-25
Year-over-Year Bus Ridership by Route Service Type	26-27
Bus Routes as Ranked by Percentage of Average Weekday Ridership	28
Metrobus Cumulative Percentage Average Weekday Ridership Share by Route (Top 75%)	29
Total Monthly and Average Weekday Bus Ridership – Year over Year Comparison Charts	30
Bus “Top 5 / Bottom 5” Routes Average Weekday Ridership Performance	31
Daily Metrobus Ridership since 2/1/20	32
Metrobus Parking Patronage Summary	33

Table of Contents (continued)

Metrorail	34
Metrorail Average Weekday Boardings by Station	35
Metrorail Average Saturday Boardings by Station	36
Metrorail Average Sunday Boardings by Station	37
Metrorail Total Monthly Boardings by Station	38
Metrorail Cumulative Percentage Average Weekday Ridership Share	39
Total Monthly and Average Weekday Rail Ridership – Year over Year Comparison Charts	40
“Top 5 / Bottom 5” Stations Average Weekday Ridership Performance	41
Daily Metrorail Ridership since 2/1/20	42
Metrorail Parking Patronage Summary	43
Metromover	44
Monthly and Average Daily Mover Boardings by Station	45
Metromover Cumulative Percentage Average Weekday Ridership Share	46
Total Monthly and Average Weekday Mover Ridership – Year over Year Comparison Charts	47
“Top 5 / Bottom 5” Stations Average Weekday Ridership Performance	48
Daily Metromover Ridership since 2/1/20	49
Special Transportation Services (STS)	50
STS Monthly and Average Daily Boardings	51
Total Monthly and Average Weekday STS Ridership – Year over Year Comparison Charts	52
Daily STS Ridership since 2/1/20	53
Ridership Seasonality	54
Ridership Seasonality – Percent Ridership Share by Month and Calendar year for Each Mode	55

All Modes Overview



**TOTAL MONTHLY WEEKDAY, SATURDAY AND SUNDAY BOARDINGS BY MODE
June 2023**

TRAVEL MODE	MONTH'S TOTAL WEEKDAYS RIDERSHIP	MONTH'S TOTAL SATURDAYS RIDERSHIP	MONTH'S TOTAL SUNDAYS RIDERSHIP	TOTAL MONTHLY RIDERSHIP	% CHANGE vs Jun 2022 TOTAL MONTH RIDERSHIP
METROBUS (1), (2)	3,793,975	432,619	318,456	4,545,050	48.3%
METRORAIL (3)	937,301	74,035	55,525	1,066,861	9.4%
METROMOVER (4)	506,380	65,264	60,779	632,423	32.5%
STS PARATRANSIT (5)	104,055	8,387	7,085	119,527	9.6%
TOTAL	5,341,711	580,305	441,845	6,363,861	37.6%

- (1) Metrobus fares resumed on June 1, 2021, following a 14-month period of fare-free rides as a result of the SARS-CoV-2 pandemic. The NextFare System farebox data replaced the bus automatic passenger counter data as ridership data of record starting on that date.
- (2) Bus ridership reporting through automatic passenger counters coupled with a new enhanced sensor system resumed on October 1, 2022.
- (3) Metrorail fares resumed on June 1, 2021, following a 14-month period of fare-free rides as a result of the SARS-CoV-2 pandemic. The NextFare System faregate data replaced the video data as ridership data of record starting on that date.
- (4) Beginning March 13, 2020 (day of National Emergency Declaration due to SARS-CoV-2 pandemic), only raw data from Metromover automatic passenger counters is reported; no estimates are performed after March 13, 2020.
- (5) Paratransit ridership data as reported by the contractor.

AVERAGE WEEKDAY, SATURDAY AND SUNDAY BOARDINGS BY MODE
June 2023

Travel Mode	Average Weekday	Average Saturday	Average Sunday	% Change Jun 2022 Weekday	% Change Jun 2022 Saturday	% Change Jun 2022 Sunday
METROBUS	172,509	108,155	79,614	46.7%	66.2%	44.9%
METRORAIL	43,325	18,605	13,960	10.8%	8.4%	-1.7%
METROMOVER	23,645	16,316	15,195	35.2%	31.2%	33.7%
STS PARATRANSIT	4,730	2,097	1,771	8.2%	22.7%	17.1%
Totals (1)	244,208	145,173	110,540	36.8%	50.6%	34.8%

(*) Average ridership is calculated and published only for those days and stations with nontrivial amounts of reported data.

METROBUS TOTAL MONTHLY RIDERSHIP COMPARISONS BY FISCAL YEAR

Bus Month	FY 19	FY 20	Variance 19 to 20	FY 21	FY 22	FY 23	Variance 22 to 23	Variance 21 to 22	Variance 19 to 23	Variance 19 to 22
Oct	4,554,886	4,507,012	-1.1%	2,805,139	3,081,157	4,679,725	51.9%	9.8%	2.7%	-32.4%
Nov	4,245,535	4,197,225	-1.1%	2,651,290	3,056,726	4,549,666	48.8%	15.3%	7.2%	-28.0%
Dec	4,081,581	4,126,990	1.1%	3,022,530	3,123,883	4,677,460	49.7%	3.4%	14.6%	-23.5%
Jan	4,195,911	4,316,998	2.9%	3,082,746	3,029,055	4,785,128	58.0%	-1.7%	14.0%	-27.8%
Feb	3,994,019	4,123,083	3.2%	3,076,966	2,995,789	4,526,317	51.1%	-2.6%	13.3%	-25.0%
Mar	4,266,768	3,136,162	-26.5%	3,660,639	3,218,562	5,183,872	61.1%	-12.1%	21.5%	-24.6%
Apr	4,291,135	1,544,316	-64.0%	3,625,048	3,105,797	4,618,302	48.7%	-14.3%	7.6%	-27.6%
May	4,330,922	1,734,609	-59.9%	3,683,343	3,097,574	4,953,197	59.9%	-15.9%	14.4%	-28.5%
Jun	3,823,863	2,210,725	-42.2%	2,672,570	3,064,059	4,545,050	48.3%	14.6%	18.9%	-19.9%
Jul	4,094,906	2,366,749	-42.2%	2,769,907	3,189,994			15.2%		-22.1%
Aug	4,109,613	2,422,014	-41.1%	2,843,552	3,442,006			21.0%		-16.2%
Sep	3,971,220	2,546,923	-35.9%	2,877,110	3,123,572			8.6%		-21.3%
FY Total	49,960,359	37,232,806	-25.5%	36,770,840	37,528,174			2.1%		-24.9%

METRORAIL TOTAL MONTHLY RIDERSHIP COMPARISONS BY FISCAL YEAR

Rail Month	FY 19	FY 20	Variance 19 to 20	FY 21	FY 22	FY 23	Variance 22 to 23	Variance 21 to 22	Variance 19 to 23	Variance 19 to 22
Oct	1,757,225	1,643,166	-6.5%	769,525	844,383	1,053,191	24.7%	9.7%	-40.1%	-51.9%
Nov	1,656,929	1,469,448	-11.3%	699,492	850,881	1,055,066	24.0%	21.6%	-36.3%	-48.6%
Dec	1,553,804	1,433,928	-7.7%	769,194	860,436	1,063,096	23.6%	11.9%	-31.6%	-44.6%
Jan	1,708,695	1,576,340	-7.7%	799,119	832,924	1,127,340	35.3%	4.2%	-34.0%	-51.3%
Feb	1,501,458	1,549,118	3.2%	730,792	905,162	1,072,791	18.5%	23.9%	-28.6%	-39.7%
Mar	1,554,851	1,027,319	-33.9%	917,097	1,084,978	1,239,336	14.2%	18.3%	-20.3%	-30.2%
Apr	1,559,446	287,803	-81.5%	827,414	1,027,139	1,087,816	5.9%	24.1%	-30.2%	-34.1%
May	1,531,597	337,696	-78.0%	887,111	1,023,322	1,151,819	12.6%	15.4%	-24.8%	-33.2%
Jun	1,359,966	608,758	-55.2%	723,469	975,477	1,066,861	9.4%	34.8%	-21.6%	-28.3%
Jul	1,419,158	632,964	-55.4%	722,159	953,331			32.0%		-32.8%
Aug	1,463,646	641,275	-56.2%	749,578	1,076,490			43.6%		-26.5%
Sep	1,427,726	654,244	-54.2%	795,749	1,012,331			27.2%		-29.1%
FY Total	18,494,501	11,862,059	-35.9%	9,390,699	11,446,854			21.9%		-38.1%

METROMOVER TOTAL MONTHLY RIDERSHIP COMPARISONS BY FISCAL YEAR

Mover Month	FY 19	FY 20	Variance 19 to 20	FY 21	FY 22	FY 23	Variance 22 to 23	Variance 21 to 22	Variance 19 to 23	Variance 19 to 22
Oct	790,533	831,234	5.1%	250,044	389,065	514,308	32.2%	55.6%	-34.9%	-50.8%
Nov	735,198	799,632	8.8%	232,422	418,929	439,150	4.8%	80.2%	-40.3%	-43.0%
Dec	767,239	849,832	10.8%	251,019	450,320	426,073	-5.4%	79.4%	-44.5%	-41.3%
Jan	746,728	847,773	13.5%	255,968	451,566	498,566	10.4%	76.4%	-33.2%	-39.5%
Feb	675,160	855,398	26.7%	260,332	465,968	459,264	-1.4%	79.0%	-32.0%	-31.0%
Mar	737,814	441,200	-40.2%	302,502	535,857	558,396	4.2%	77.1%	-24.3%	-27.4%
Apr	795,696	130,549	-83.6%	310,772	495,982	565,943	14.1%	59.6%	-28.9%	-37.7%
May	734,645	146,454	-80.1%	292,922	455,120	547,948	20.4%	55.4%	-25.4%	-38.0%
Jun	701,318	203,637	-71.0%	286,145	477,286	632,423	32.5%	66.8%	-9.8%	-31.9%
Jul	739,814	210,596	-71.5%	368,847	512,094			38.8%		-30.8%
Aug	739,785	205,995	-72.2%	344,319	508,359			47.6%		-31.3%
Sep	699,879	219,696	-68.6%	331,915	305,185			-8.1%		-56.4%
FY Total	8,863,809	5,741,996	-35.2%	3,487,207	5,465,731			56.7%		-38.3%

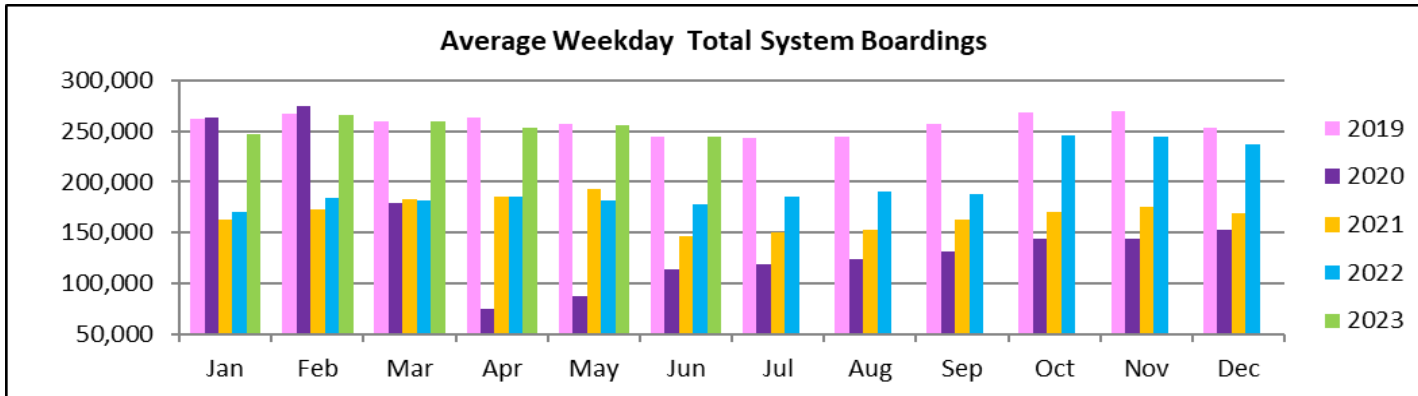
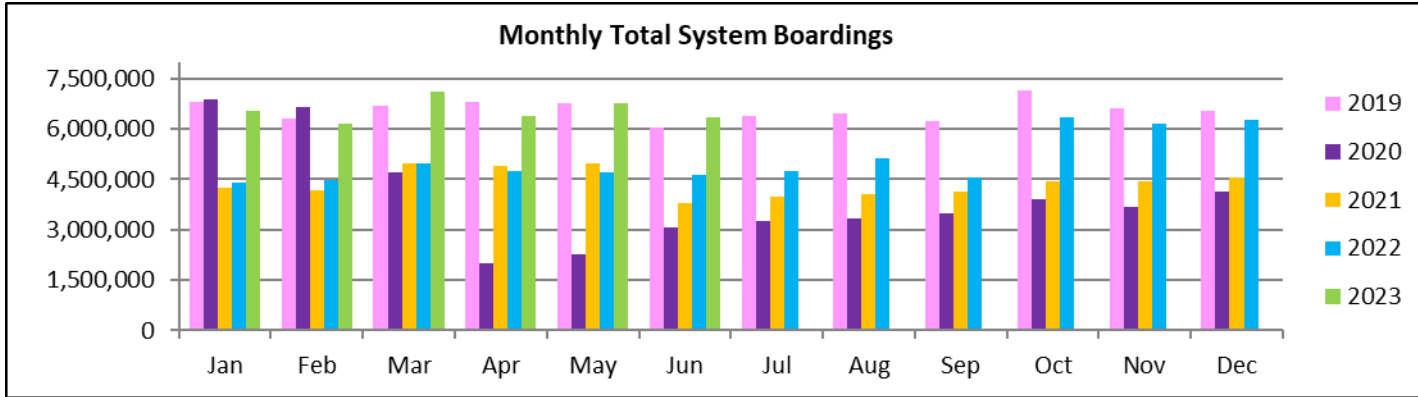
SPECIAL TRANSPORTATION SERVICES (STS) TOTAL MONTHLY RIDERSHIP COMPARISONS BY FISCAL YEAR

STS Month	FY 19	FY 20	Variance 19 to 20	FY 21	FY 22	FY 23	Variance 22 to 23	Variance 21 to 22	Variance 19 to 23	Variance 19 to 22
Oct	162,564	162,704	0.1%	97,388	115,122	122,189	6.1%	18.2%	-24.8%	-29.2%
Nov	145,653	144,366	-0.9%	89,387	110,289	111,578	1.2%	23.4%	-23.4%	-24.3%
Dec	136,110	138,642	1.9%	96,366	104,496	112,019	7.2%	8.4%	-17.7%	-23.2%
Jan	146,268	149,114	1.9%	97,928	97,541	112,632	15.5%	-0.4%	-23.0%	-33.3%
Feb	141,396	144,392	2.1%	98,285	105,706	111,748	5.7%	7.6%	-21.0%	-25.2%
Mar	153,191	89,634	-41.5%	112,930	120,718	126,819	5.1%	6.9%	-17.2%	-21.2%
Apr	155,808	26,877	-82.7%	120,122	114,912	116,882	1.7%	-4.3%	-25.0%	-26.2%
May	158,665	39,654	-75.0%	118,636	114,505	127,782	11.6%	-3.5%	-19.5%	-27.8%
Jun	141,320	59,093	-58.2%	112,397	109,054	119,527	9.6%	-3.0%	-15.4%	-22.8%
Jul	148,232	61,765	-58.3%	110,059	107,188			-2.6%		-27.7%
Aug	147,331	66,563	-54.8%	110,766	117,941			6.5%		-19.9%
Sep	141,387	80,346	-43.2%	115,406	108,788			-5.7%		-23.1%
FY Total	1,777,925	1,163,150	-34.6%	1,279,670	1,326,260			3.6%		-25.4%

ALL-MODES COMBINED TOTAL MONTHLY RIDERSHIP COMPARISONS BY FISCAL YEAR

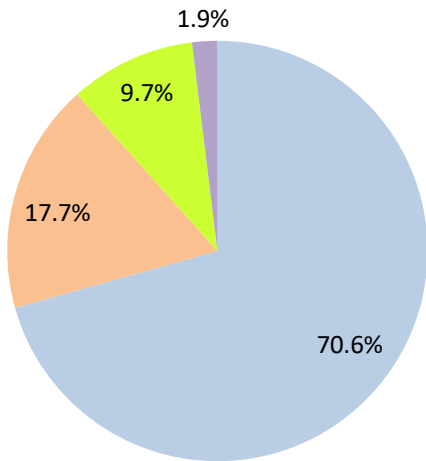
All Modes											
Month	FY 19	FY 20	FY 21	FY 22	FY 23	19 TO 20	20 TO 21	21 TO 22	22 TO 23	19 TO 23	19 TO 22
Oct	7,265,208	7,144,116	3,922,096	4,429,727	6,369,413	-1.7%	-45.1%	12.9%	43.8%	-12.3%	-39.0%
Nov	6,783,315	6,610,671	3,672,591	4,436,825	6,155,460	-2.5%	-44.4%	20.8%	38.7%	-9.3%	-34.6%
Dec	6,538,734	6,549,392	4,139,109	4,539,135	6,278,648	0.2%	-36.8%	9.7%	38.3%	-4.0%	-30.6%
Jan	6,797,602	6,890,225	4,235,761	4,411,086	6,523,666	1.4%	-38.5%	4.1%	47.9%	-4.0%	-35.1%
Feb	6,312,033	6,671,991	4,166,375	4,472,625	6,170,120	5.7%	-37.6%	7.4%	38.0%	-2.2%	-29.1%
Mar	6,712,624	4,694,315	4,993,168	4,960,115	7,108,423	-30.1%	6.4%	-0.7%	43.3%	5.9%	-26.1%
Apr	6,802,085	1,989,545	4,883,356	4,743,830	6,388,943	-70.8%	145.5%	-2.9%	34.7%	-6.1%	-30.3%
May	6,755,829	2,258,413	4,982,012	4,690,521	6,780,746	-66.6%	120.6%	-5.9%	44.6%	0.4%	-30.6%
Jun	6,026,467	3,082,213	3,794,581	4,625,876	6,363,861	-48.9%	23.1%	21.9%	37.6%	5.6%	-23.2%
Jul	6,402,110	3,272,074	3,970,972	4,762,607		-48.9%	21.4%	19.9%			-25.6%
Aug	6,460,375	3,335,847	4,048,215	5,144,796		-48.4%	21.4%	27.1%			-20.4%
Sep	6,240,212	3,501,209	4,120,180	4,549,876		-43.9%	17.7%	10.4%			-27.1%
FY Total	79,096,594	56,000,011	50,928,416	55,767,019		-29.2%	-9.1%	9.5%			-29.5%

TOTAL MONTHLY AND AVERAGE WEEKDAY RIDERSHIP YEAR OVER YEAR COMPARISON CHARTS – ALL MODES COMBINED



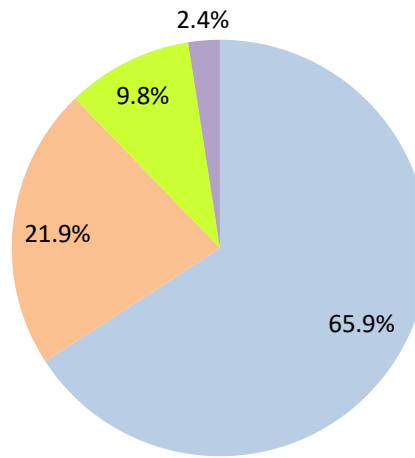
AVERAGE WEEKDAY RIDERSHIP - MODAL SPLITS

June 2023



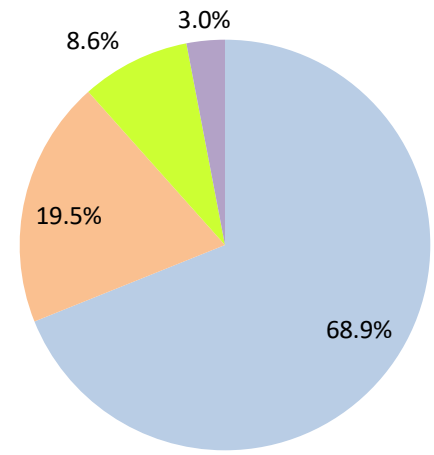
boardings

June 2022



boardings

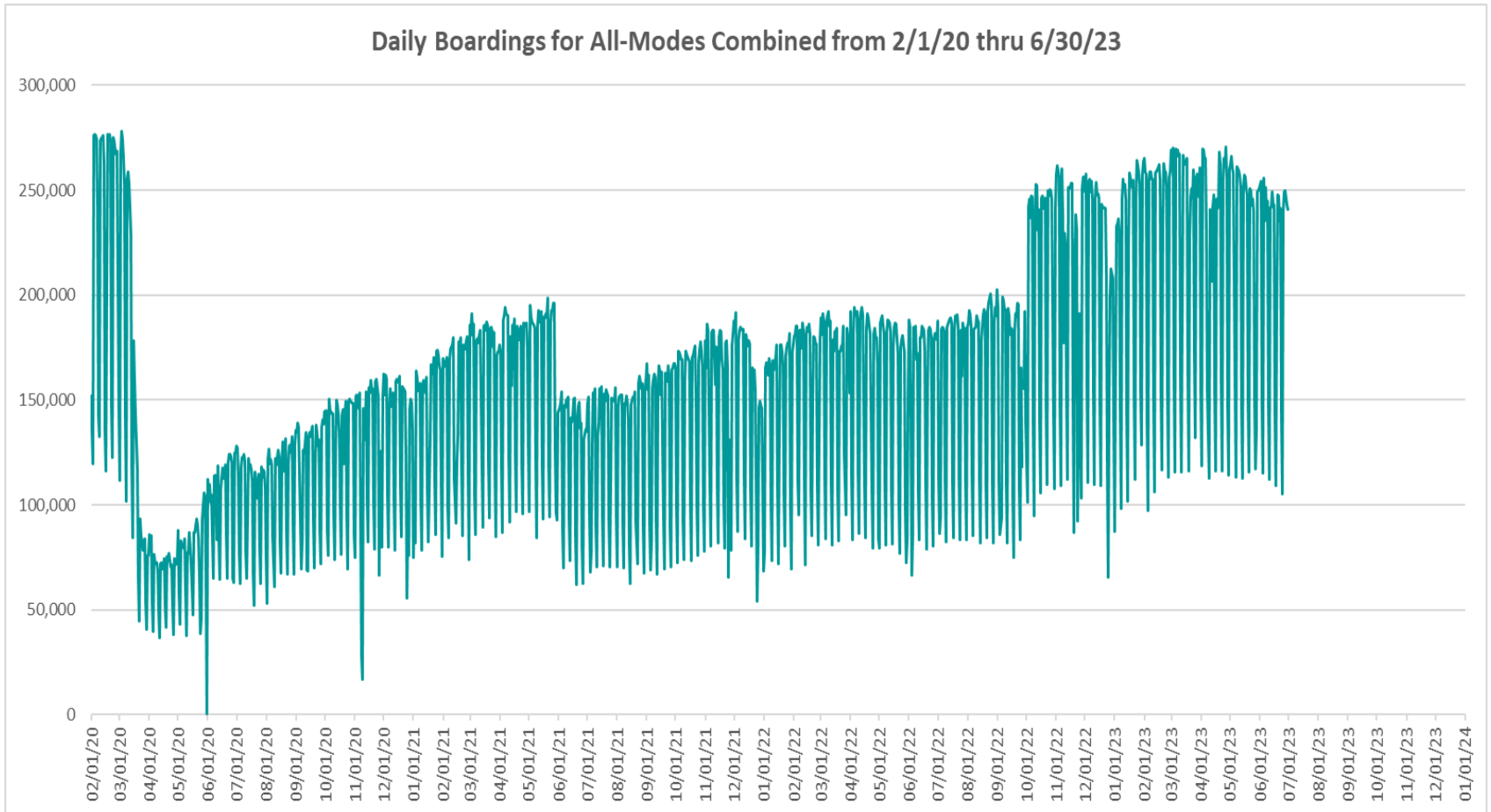
June 2021



boardings



DAILY RIDERSHIP FOR ALL MODES COMBINED SINCE FEBRUARY 1, 2020



- (1) National Emergency was declared on 3/13/20 as a result of the SARS-CoV-2 pandemic.
- (2) There was no Metrobus, Metrorail and Metromover service on 5/31/20, as a safety precaution, and no service for any of the four modes on 9/28/22 as a result of Hurricane Ian..
- (3) The dip at the start of the second week of November 2020 is due to Hurricane Eta.
- (4) The reduction seen beginning 6/1/21 is partly due to the resumption of fares for bus and rail, and partly the result of having resumed reporting Cubic farebox data rather than bus APC counts, as well as Cubic rail faregate counts instead of video camera counts on that date. The jump seen at the start of October 2022 is due to the return to APC bus ridership counts reporting on 10/1/22.
- (5) Periodic (weekly) variations are prominent, since weekday ridership is almost always significantly higher than weekend or holiday ridership.

Metrobus



METROBUS AVERAGE WEEKDAY BOARDINGS BY ROUTE (†)

Route	Average Weekday	Average Weekday	Percent Change	Average Weekday	Percent Change	Average Weekday	Percent Change	Average Weekday	Percent Change
	weekdays Jun-23	Jun-22	YOY	Feb-20	Current vs Feb-20	May-23	MOM	Jun-21	YO2Y
1 (*)	141	143	-1.5%	184	-23.6%	178	-20.8%	142	-0.7%
2	2,701	1,805	49.6%	3,102	-12.9%	2,922	-7.6%	1,731	56.0%
3	5,212	3,609	44.4%	5,137	1.5%	5,338	-2.4%	4,063	28.3%
7	3,695	2,884	28.1%	3,501	5.5%	3,976	-7.1%	2,145	72.3%
8	4,662	3,286	41.9%	3,909	19.3%	4,868	-4.2%	3,192	46.1%
9	5,902	3,815	54.7%	5,528	6.8%	6,171	-4.4%	4,173	41.4%
10	2,269	1,569	44.6%	2,482	-8.6%	2,381	-4.7%	1,254	81.0%
11	8,252	6,229	32.5%	7,292	13.2%	8,635	-4.4%	5,338	54.6%
12	2,633	1,537	71.3%	2,779	-5.2%	2,864	-8.1%	1,504	75.1%
16	1,860	1,361	36.7%	1,862	-0.1%	1,925	-3.4%	950	95.6%
17	3,464	2,274	52.3%	3,878	-10.7%	3,793	-8.7%	2,008	72.5%
19	1,475	819	80.0%	1,542	-4.4%	1,656	-11.0%	674	118.9%
21	1,866	1,053	77.2%	1,817	2.7%	1,958	-4.7%	882	111.6%
22	4,023	2,506	60.6%	3,640	10.5%	4,339	-7.3%	1,946	106.7%
24 - Coral Way Limited	2,193	1,575	39.2%	1,340	63.7%	2,336	-6.1%	829	164.4%
27	6,739	4,782	40.9%	6,972	-3.3%	7,031	-4.1%	4,125	63.4%
29 (*)	336	371	-9.5%	534	-37.1%	519	-35.3%	317	6.1%
31 - BUSWAY LOCAL	1,087	709	53.3%	1,089	-0.2%	1,164	-6.6%	521	108.6%
32	2,524	1,759	43.5%	2,390	5.6%	2,721	-7.2%	1,197	110.9%
33	1,747	1,236	41.4%	1,687	3.6%	2,036	-14.2%	850	105.6%
34 EXPRESS	1,503	958	57.0%	2,008	-25.1%	1,772	-15.2%	938	60.3%
35	2,658	1,477	79.9%	2,421	9.8%	2,787	-4.6%	1,366	94.5%
36	2,576	1,862	38.4%	2,536	1.6%	2,683	-4.0%	1,305	97.4%
37	3,454	2,605	32.6%	3,273	5.5%	3,633	-4.9%	2,142	61.3%
38	6,064	3,652	66.0%	6,361	-4.7%	6,503	-6.7%	3,102	95.5%
39 EXPRESS				893				270	
40	2,229	1,410	58.0%	1,772	25.8%	2,374	-6.1%	967	130.4%
42	1,033	694	48.8%	820	25.9%	1,038	-0.5%	531	94.7%
46 - LIBERTY CITY CONN. (*)	10	16	-37.0%	41	-75.4%	22	-54.5%	14	-25.9%
51 - FLAGLER MAX	3,620	2,815	28.6%	3,109	16.4%	3,900	-7.2%	1,904	90.1%
52	1,228	847	45.0%	1,261	-2.7%	1,339	-8.3%	648	89.6%
54	3,093	2,176	42.2%	2,940	5.2%	3,204	-3.4%	1,712	80.7%
55 MARLINS SHUTTLE									
56 (*)	199	286	-30.3%	354	-43.7%	376	-47.0%	191	4.4%
57	520	300	73.2%	433	19.9%	539	-3.6%	293	77.4%
62	1,771	1,146	54.5%	1,815	-2.4%	1,839	-3.7%	1,037	70.8%
71 (*)	448	528	-15.2%	711	-37.0%	756	-40.8%	404	10.9%
72 (*)	520	552	-5.8%	781	-33.4%	731	-28.9%	387	34.5%

(†) In this table and those which follow, "YOY" stands for "year-over-year", "MOM" for "month-over-month" and "YO2Y" for "year over two years", i.e., current month vs 12 months prior, one month prior, and 24 months prior, respectively.

(*) Contracted routes

(**) Due to effects from the SARS-CoV-2 pandemic; rides were fare-free beginning March 22, 2020; fares were reinstated on June 1, 2021, in part accounting for the drop in ridership from May 2021.

METROBUS AVERAGE WEEKDAY BOARDINGS BY ROUTE

Route	Average Weekday	Average Weekday	Percent Change	Average Weekday	Percent Change	Average Weekday	Percent Change	Average Weekday	Percent Change
	weekdays Jun-23	Jun-22	YOY	Feb-20	Current vs Feb-20	May-23	MOM	Jun-21	YO2Y
73	2,915	2,142	36.1%	2,124	37.2%	3,193	-8.7%	1,317	121.4%
75	1,199	679	76.6%	1,429	-16.1%	1,430	-16.2%	642	86.8%
77	8,592	5,017	71.3%	7,129	20.5%	9,051	-5.1%	4,689	83.2%
79 STREET MAX	505	284	77.4%	361	39.6%	555	-9.1%		
82 - WESTCHESTER CIRC. (*)	66	38	73.9%	62	7.2%	72	-8.6%	27	148.3%
87	1,807	1,350	33.9%	1,499	20.5%	1,973	-8.4%	964	87.4%
88	2,276	1,615	40.9%	2,076	9.6%	2,472	-7.9%	1,579	44.2%
93 - BISCAYNE MAX	3,490	2,079	67.9%	3,334	4.7%	3,664	-4.7%	1,431	143.8%
95 EXPRESS	1,080	763	41.5%	1,690	-36.1%	1,098	-1.6%	528	104.4%
99	1,702	1,145	48.7%	1,473	15.6%	1,862	-8.6%	882	93.0%
101 - A (*)	81	195	-58.5%	177	-54.2%	224	-63.8%	132	-38.8%
102 - B	2,060	1,349	52.7%	1,778	15.9%	2,159	-4.6%	1,212	69.9%
103 - C				463				182	
104	903	500	80.7%	837	7.9%	968	-6.7%	487	85.4%
105 - E	1,338	912	46.7%	1,287	3.9%	1,429	-6.4%	796	68.0%
107 - G	1,890	1,209	56.4%	1,713	10.3%	2,011	-6.0%	992	90.6%
108 - H	507	327	54.9%	473	7.3%	615	-17.5%	228	122.8%
110 - J	2,922	2,056	42.1%	2,508	16.5%	3,166	-7.7%	2,164	35.0%
112 - L	8,394	5,660	48.3%	7,636	9.9%	8,636	-2.8%	5,772	45.4%
113 - M	916	460	99.0%	866	5.9%	954	-4.0%	350	162.1%
115 (*)	117	153	-23.4%	180	-35.2%	153	-23.5%	171	-31.8%
119 - S	9,287	6,759	37.4%	8,970	3.5%	9,600	-3.3%	6,973	33.2%
120 - BEACH MAX	6,194	4,769	29.9%	6,667	-7.1%	6,466	-4.2%	4,188	47.9%
132 TRI-RAIL (DORAL)	45	2	1891.9%	16	187.3%	52	-14.4%	13	237.1%
135	1,394	820	70.0%	1,399	-0.3%	1,632	-14.6%	679	105.4%
136	153	106	45.3%	126	21.5%	156	-2.0%	73	109.6%
137 - WEST DADE CONN.	2,140	1,383	54.7%	1,626	31.6%	2,302	-7.0%	801	167.2%
150 - MIAMI BEACH AIRPORT FLYER	2,110	1,338	57.7%	1,867	13.0%	2,210	-4.5%	1,347	56.7%
155 - BISCAYNE GARDENS CIRCULATOR (*)	55	40	37.1%	44	25.0%	55	0.1%	21	168.5%
175 - NW MIAMI-DADE EXPRESS				33					
183	3,256	2,013	61.7%	3,149	3.4%	3,610	-9.8%	1,711	90.3%
195 EXPRESS - BROWARD BLVD				372					
196 EXPRESS - SHERIDAN ST				383					
200 - CUTLER BAY LOCAL	158	92	72.2%	158	0.3%	206	-23.2%	81	94.4%
202 - LITTLE HAITI CONN. (*)	102	114	-10.3%	140	-27.1%	76	34.6%	100	1.6%
204 KILLIAN KAT	689	488	41.4%	1,071	-35.6%	765	-9.8%		

METROBUS AVERAGE WEEKDAY BOARDINGS BY ROUTE

Route	Average Weekday	Average Weekday	Percent Change	Average Weekday	Percent Change	Average Weekday	Percent Change	Average Weekday	Percent Change
	weekdays Jun-23	Jun-22	YOY	Feb-20	Current vs Feb-20	May-23	MOM	Jun-21	YO2Y
207 (7st) - LITTLE HAVANA CIRC	1,712	1,045	63.8%	1,489	15.0%	1,749	-2.1%	648	164.3%
208 (8st) - LITTLE HAVANA CIRC	1,589	968	64.1%	1,308	21.5%	1,556	2.1%	558	184.7%
210 - SKYLAKE CIRC (*)	210	325	-35.4%	282	-25.4%	402	-47.8%	275	-23.5%
211 - OVERTOWN CIRC. (*)	87	90	-3.9%	58	49.7%	89	-2.9%	27	219.2%
212 - SWEETWATER CIRC. (*)	27	22	22.6%	15	82.1%	23	18.2%	25	6.1%
217 - BUNCHE PARK CIRC (*)	35	57	-39.0%	97	-64.1%	70	-50.1%	45	-22.7%
238 EAST/WEST CONN.	597	372	60.5%	449	32.9%	620	-3.7%	278	114.5%
241 TUTTLE LIMITED	296	76	287.7%			351	-15.7%		
246 - NIGHT OWL (*)	37	50	-25.4%	94	-60.2%	62	-40.0%	10	287.8%
248 - PRINCETON CIRCULATOR (*)	36	77	-53.9%	135	-73.6%	103	-65.6%	79	-54.8%
252 - CORAL REEF MAX	1,007	585	72.2%	851	18.3%	1,056	-4.7%	402	150.7%
254 - BROWNSVILLE CIRC. (*)	8	6	32.8%	19	-59.8%	7	6.3%	46	-83.3%
267 - LUDLAM LIMITED (*)	106	142	-25.4%	149	-28.9%	169	-37.4%	96	10.1%
272 SUNSET KAT (*)	226	310	-27.1%	550	-58.9%	455	-50.3%	278	-18.6%
277 - 7th AVENUE MAX	766	379	102.1%	683	12.1%	859	-10.8%	302	153.7%
286 - NORTH POINTE CIRC. (*)	78	61	28.2%	97	-19.4%	107	-26.8%	32	144.8%
287 - SAGA BAY MAX	313	194	61.2%	358	-12.6%	322	-2.9%	146	113.9%
288 - KENDALL CRUISER	455	405	12.3%	762	-40.4%	456	-0.3%		
295 EXPRESS - BROWARD BLVD - CIVIC CENTER				233					
296 EXPRESS - SHERIDAN ST - CIVIC CENTER				215					
297-27th AVENUE ORANGE MAX	1,138	790	44.1%	1,356	-16.1%	1,282	-11.3%	548	107.7%
301 DADE-MONROE EXPRESS (*)	1,009	751	34.3%	841	19.9%	967	4.3%	964	4.6%
302 CARD SOUND EXPRESS (*)	100	84	19.3%	86	16.4%	107	-5.7%	75	33.3%
344 (*)	32	43	-24.7%	96	-66.2%	76	-57.4%	66	-50.7%
500	73	12	500.4%	81	-9.4%	82	-10.9%		
836 EXPRESS	308	141	117.9%			375	-18.0%	73	323.9%
837 EXPRESS	145					151	-3.8%		
GREEN HILLS SHUTTLE (*)	5	6	-17.4%	9	-47.2%	7	-32.1%	18	-74.0%
KINGS CREEK SHUTTLE (*)	11	21	-48.1%	13	-16.9%	11	-1.8%	18	-40.8%
SIERRA LAKES SHUTTLE (*)	17	19	-7.0%	45	-61.8%	15	12.8%	16	9.2%
ROBERT SHARP SHUTTLE (*)	20	16	25.0%	10	105.3%	19	1.6%	21	-5.3%
AHEPA SHUTTLE (*)	18	15	23.3%	21	-13.3%	24	-23.4%	22	-16.3%
Total	172,509	117,563	46.7%	167,711	2.9%	184,695	-6.6%	100,645	71.4%

(*) The following routes are entirely operated under contract: 1, 29, 46, 56, 71, 72, 82, 101-A, 115, 155, 202, 210, 211, 212, 217, 246, 248, 254, 267, 272, 286, 301, 302 and 344.

(1) Includes shuttles and those routes which were not run both years.

(2) Several express routes were suspended beginning at the end of March 2020, due to the SARS-CoV-2 pandemic, while other routes had alignment and schedule modifications made to them, in an ongoing effort to optimize service delivery.

METROBUS AVERAGE SATURDAY BOARDINGS BY ROUTE

Route	Average Saturday	Average Saturday	Percent Change	Average Saturday	Percent Change	Average Saturday	Percent Change	Average Saturday	Percent Change
	Jun-23	Jun-22	YOY	Feb-20	Current vs Feb-20	May-23	MOM	Jun-21	YO2Y
Saturdays									
1 (*)	173	182	-5.2%	215	-19.7%	185	-6.4%	186	-7.1%
2	1,633	882	85.0%	1,616	1.0%	1,689	-3.3%	946	72.7%
3	6,096	3,256	87.3%	5,229	16.6%	6,060	0.6%	4,066	49.9%
7	2,100	1,496	40.4%	1,887	11.3%	2,144	-2.1%	1,308	60.6%
8	2,529	1,956	29.3%	2,027	24.7%	2,604	-2.9%	1,969	28.5%
9	3,373	2,165	55.8%	3,034	11.2%	3,649	-7.6%	2,539	32.9%
10	1,903	1,154	64.8%	1,896	0.4%	2,060	-7.6%	1,048	81.6%
11	6,339	4,016	57.9%	5,182	22.3%	6,952	-8.8%	3,651	73.6%
16	1,593	1,014	57.1%	1,566	1.7%	1,730	-7.9%	1,021	56.1%
17	2,384	1,399	70.4%	2,363	0.9%	2,562	-6.9%	1,579	51.0%
22	2,357	1,425	65.5%	2,084	13.1%	2,497	-5.6%	1,340	75.9%
24 - Coral Way Limited	1,443	844	71.0%	1,165	23.8%	1,576	-8.5%	741	94.7%
27	4,108	2,530	62.4%	4,034	1.8%	4,438	-7.4%	2,925	40.4%
31 - BUSWAY LOCAL	1,041	483	115.5%	896	16.2%	1,208	-13.8%	623	67.1%
32	1,234	774	59.4%	1,029	20.0%	1,275	-3.2%	698	76.8%
33	1,202	695	72.9%	951	26.4%	1,242	-3.3%	685	75.5%
35	1,492	1,006	48.3%	1,372	8.8%	1,586	-5.9%	896	66.6%
36	1,543	942	63.7%	1,289	19.6%	1,668	-7.5%	879	75.5%
37	2,148	1,448	48.3%	2,090	2.8%	2,124	1.2%	1,330	61.6%
38	5,945	2,765	115.0%	4,715	26.1%	5,513	7.8%	2,435	144.2%
40	904	496	82.2%	655	38.1%	918	-1.5%	473	91.3%
42	656	450	45.8%	552	19.0%	703	-6.6%	418	57.1%
52	711	377	88.3%	686	3.6%	732	-2.9%	410	73.4%
54	2,002	1,263	58.5%	1,727	15.9%	1,986	0.8%	1,267	58.0%
55 MARLINS SHUTTLE									
62	1,438	860	67.2%	1,343	7.0%	1,422	1.1%	863	66.6%
71 (*)	255	224	14.0%	252	1.4%	271	-5.9%	165	54.9%
72 (*)	398	268	48.5%	350	13.9%	408	-2.3%	245	62.4%
73	1,358	839	61.9%	860	57.8%	1,407	-3.5%	705	92.6%
75	474	269	76.2%	468	1.3%	514	-7.7%	330	43.7%
77	5,278	3,144	67.9%	4,197	25.8%	5,455	-3.2%	2,998	76.0%
87	627	391	60.1%	402	55.7%	632	-0.9%	314	99.8%
88	1,719	1,178	45.9%	1,620	6.1%	1,837	-6.4%	1,009	70.3%
99	1,055	707	49.3%	849	24.3%	1,089	-3.1%	573	84.2%

METROBUS AVERAGE SATURDAY BOARDINGS BY ROUTE

Route	Average Saturday	Average Saturday	Percent Change	Average Saturday	Percent Change	Average Saturday	Percent Change	Average Saturday	Percent Change
	Jun-23	Jun-22	YOY	Feb-20	Current vs Feb-20	May-23	MOM	Jun-21	YO2Y
Saturdays									
101 - A (*)	36	49	-26.2%	71	-49.2%	64	-43.5%	64	-43.5%
102 - B	1,039	460	126.0%	851	22.0%	1,095	-5.1%	652	59.2%
103 - C				315				124	
104	520	239	118.1%	468	11.1%	550	-5.3%	262	98.6%
105 - E	683	500	36.7%	619	10.4%	786	-13.0%	427	60.1%
107 - G	1,325	755	75.4%	1,066	24.2%	1,387	-4.5%	700	89.4%
108 - H	414	277	49.7%	372	11.2%	467	-11.3%	254	62.8%
110 - J	2,078	1,228	69.3%	1,952	6.4%	2,175	-4.4%	1,231	68.9%
112 - L	6,982	4,266	63.7%	5,667	23.2%	7,129	-2.1%	4,514	54.7%
113 - M	614	320	91.6%	503	22.0%	636	-3.4%	175	251.7%
115 (*)	60	90	-32.9%	82	-26.7%	97	-37.7%	217	-72.2%
119 - S	8,137	4,924	65.3%	6,861	18.6%	8,394	-3.1%	5,600	45.3%
120 - BEACH MAX	5,912	3,223	83.5%	4,744	24.6%	5,972	-1.0%	2,471	139.2%
135	532	292	82.3%	539	-1.3%	572	-7.0%	304	75.1%
137 - WEST DADE CONN.	1,424	919	54.9%	1,027	38.7%	1,495	-4.7%	712	100.2%
150 - MIAMI BEACH AIRPORT FLYER	1,902	1,267	50.1%	1,604	18.6%	2,205	-13.7%	1,244	53.0%
183	1,954	1,191	64.0%	1,790	9.2%	2,119	-7.8%	1,343	45.5%
200 - CUTLER BAY LOCAL	142	15	822.8%	119	18.7%	158	-10.4%	64	122.8%
202 - LITTLE HAITI CONN. (*)	26	36	-26.8%	50	-48.2%	24	7.2%	57	-54.0%
207 (7st) - LITTLE HAVANA CIRC	953	352	170.8%	1,032	-7.7%	1,139	-16.3%	590	61.7%
208 (8st) - LITTLE HAVANA CIRC	1,069	546	96.0%	1,044	2.4%	977	9.4%	547	95.6%
210 - SKYLAKE CIRC (*)	80	136	-41.4%	165	-51.7%	116	-31.3%	136	-41.4%
241 TUTTLE LIMITED	206	41	406.1%			204	1.1%		
246 - NIGHT OWL (*)	51	46	10.9%	84	-39.9%	48	5.2%	4	1168.8%
252 - CORAL REEF MAX	410	220	86.0%	302	35.7%	455	-10.0%	203	101.8%
286 - NORTH POINTE CIRC. (*)	33	44	-25.0%	41	-19.1%	71	-53.5%	29	13.8%
301 DADE-MONROE EXPRESS (*)	902	706	27.8%	801	12.6%	863	4.5%	980	-8.0%
302 CARD SOUND EXPRESS (*)	96	56	72.5%	57	69.2%	88	9.1%	73	31.6%
338 - WEEKEND EXPRESS	225	186	20.8%	237	-5.0%	216	4.3%	137	64.4%
500	54	12	347.9%	70	-23.2%	63	-14.0%	4	1243.8%
12/21 WEEKEND INTERL.	2,735	1,701	60.8%	2,528	8.2%	3,116	-12.3%	1,399	95.5%
FEDERATION GARDENS SHUTTLE (*)	23	34	-32.1%	28	-19.9%	19	19.7%	17	37.9%
Total	108,155	65,066	66.2%	93,742	15.4%	112,864	-4.2%	65,182	65.9%

METROBUS AVERAGE SUNDAY BOARDINGS BY ROUTE

Route	Average Sunday	Average Sunday	Percent Change	Average Sunday	Percent Change	Average Sunday	Percent Change	Average Sunday	Percent Change
	Jun-23	Jun-22	YOY	Feb-20	Current vs Feb-20	May-23	MOM	Jun-21	YO2Y
Sundays									
1 (*)	143	218	-34.6%	201	-29.0%	153	-6.6%	128	11.1%
2	1,047	742	41.2%	1,335	-21.6%	1,196	-12.4%	780	34.3%
3	4,687	3,079	52.3%	4,353	7.7%	5,250	-10.7%	3,296	42.2%
7	1,506	1,272	18.4%	1,654	-9.0%	1,665	-9.5%	1,005	49.9%
8	1,847	1,592	16.0%	1,746	5.8%	2,140	-13.7%	1,066	73.2%
9	2,688	1,839	46.1%	2,549	5.4%	2,832	-5.1%	2,173	23.7%
10	1,408	1,025	37.4%	1,441	-2.3%	1,596	-11.8%	983	43.2%
11	3,934	2,819	39.5%	3,917	0.4%	4,485	-12.3%	2,270	73.3%
16	1,021	615	66.0%	997	2.5%	1,118	-8.7%	613	66.6%
17	1,710	1,353	26.4%	1,833	-6.7%	1,798	-4.9%	1,040	64.4%
22	1,720	1,222	40.7%	1,548	11.1%	1,947	-11.7%	887	93.8%
24 - Coral Way Limited	1,083	834	29.8%	905	19.7%	1,174	-7.8%	563	92.5%
27	2,894	2,065	40.2%	2,918	-0.8%	3,220	-10.1%	1,975	46.6%
31 - BUSWAY LOCAL	738	348	112.3%	715	3.3%	766	-3.7%	368	100.6%
32	719	472	52.3%	772	-6.9%	753	-4.6%	333	116.1%
33	682	444	53.8%	607	12.4%	768	-11.2%	346	97.4%
35	1,119	736	52.1%	942	18.9%	1,218	-8.1%	651	71.9%
36	1,214	894	35.8%	1,111	9.3%	1,253	-3.1%	729	66.6%
37	1,672	1,328	26.0%	1,739	-3.9%	1,860	-10.1%	1,005	66.4%
38	5,406	2,843	90.2%	4,147	30.4%	5,287	2.2%	2,353	129.8%
40	570	393	45.2%	447	27.4%	648	-12.1%	298	91.2%
42	395	297	33.0%	416	-5.0%	431	-8.4%	229	72.7%
52	462	285	62.3%	466	-1.0%	525	-12.0%	304	52.0%
54	1,300	875	48.5%	1,171	11.0%	1,308	-0.6%	755	72.1%
55 MARLINS SHUTTLE									
62	857	556	54.3%	891	-3.7%	917	-6.5%	456	88.1%
71 (*)	177	178	-0.6%	162	9.3%	172	2.8%	106	67.0%
72 (*)	270	305	-11.2%	265	2.2%	299	-9.7%	167	62.1%
73	657	448	46.8%	495	32.7%	770	-14.7%	233	182.2%
75	293	188	55.6%	271	8.2%	336	-12.8%	193	51.6%
77	3,310	2,223	48.9%	2,815	17.6%	3,837	-13.7%	2,193	51.0%
87	339	262	29.5%	319	6.3%	414	-18.1%	215	57.6%
88	1,267	930	36.3%	1,286	-1.5%	1,379	-8.1%	679	86.6%
99	783	487	60.6%	658	19.0%	858	-8.8%	442	77.0%

METROBUS AVERAGE SUNDAY BOARDINGS BY ROUTE

Route	Average Sunday	Average Sunday	Percent Change	Average Sunday	Percent Change	Average Sunday	Percent Change	Average Sunday	Percent Change
	Jun-23	Jun-22	YOY	Feb-20	Current vs Feb-20	May-23	MOM	Jun-21	YO2Y
Sundays									
101 - A (*)	14	41	-67.1%	56	-75.7%	55	-75.5%	38	-64.5%
102 - B	836	425	96.9%	717	16.7%	942	-11.2%	488	71.5%
103 - C				212				92	
104	384	230	66.9%	317	21.2%	396	-3.0%	137	181.5%
105 - E	623	508	22.5%	616	1.1%	703	-11.5%	445	39.8%
107 - G	945	779	21.3%	895	5.6%	1,161	-18.6%	589	60.5%
108 - H	392	274	43.2%	328	19.3%	436	-10.1%	218	79.7%
110 - J	1,630	1,361	19.7%	1,638	-0.5%	1,788	-8.9%	1,012	61.0%
112 - L	4,927	3,395	45.2%	4,804	2.6%	5,436	-9.4%	3,535	39.4%
113 - M	448	247	81.6%	431	4.0%	563	-20.4%	241	86.2%
115 (*)	56	64	-13.3%	80	-30.6%	83	-32.8%	184	-69.8%
119 - S	7,717	5,469	41.1%	7,141	8.1%	9,001	-14.3%	5,180	49.0%
120 - BEACH MAX	3,416	2,181	56.6%	3,469	-1.5%	3,932	-13.1%	2,050	66.7%
135	376	272	38.5%	349	7.7%	397	-5.2%	210	79.6%
137 - WEST DADE CONN.	934	752	24.2%	879	6.3%	1,087	-14.1%	521	79.5%
150 - MIAMI BEACH AIRPORT FLYER	1,685	1,277	32.0%	1,574	7.1%	1,922	-12.3%	1,405	19.9%
183	1,638	976	67.8%	1,413	15.9%	1,672	-2.0%	941	74.1%
200 - CUTLER BAY LOCAL	54	2	2587.5%	59	-8.1%	56	-3.3%	41	32.7%
202 - LITTLE HAITI CONN. (*)	23	34	-32.4%	39	-41.0%	23	-1.7%	57	-59.5%
207 (7st) - LITTLE HAVANA CIRC	731	403	81.3%	796	-8.2%	886	-17.5%	496	47.4%
208 (8st) - LITTLE HAVANA CIRC	812	490	65.8%	911	-10.9%	935	-13.2%	514	57.8%
210 - SKYLAKE CIRC (*)	87	176	-50.6%	143	-39.3%	116	-25.3%	104	-16.6%
241 TUTTLE LIMITED	157	32	395.3%			193	-18.4%		
246 - NIGHT OWL (*)	51	60	-14.7%	87	-41.7%	58	-12.5%		
252 - CORAL REEF MAX	293	171	71.1%	199	47.4%	354	-17.3%	155	89.6%
301 DADE-MONROE EXPRESS (*)	890	653	36.2%	751	18.4%	836	6.4%	959	-7.2%
302 CARD SOUND EXPRESS (*)	70	63	11.1%	57	23.2%	73	-3.5%	45	55.2%
338 - WEEKEND EXPRESS	203	113	79.5%	252	-19.3%	223	-8.9%	153	33.1%
500	81	10	733.3%	83	-1.8%	45	80.6%	1	8025.0%
12/21 WEEKEND INTERL.	2,227	1,329	67.7%	2,048	8.8%	2,214	0.6%	1,319	68.8%
Total	79,614	54,945	44.9%	75,428	5.6%	87,959	-9.5%	49,957	59.4%

METROBUS TOTAL MONTHLY BOARDINGS BY ROUTE

Route	Total Month	Total Month	Percent Change	Total Month	Percent Change	Total Month	Percent Change	Total Month	Percent Change
	Monthly Total	Jun-23	Jun-22	YOY	Feb-20	Current vs Feb-20	May-23	MOM	Jun-21
1 (*)	4,354	4,739	-8.1%	5,558	-21.7%	5,407	-19.5%	4,371	-0.4%
2	70,141	46,206	51.8%	75,463	-7.1%	77,013	-8.9%	44,986	55.9%
3	157,801	104,723	50.7%	146,294	7.9%	167,925	-6.0%	118,827	32.8%
7	95,720	74,523	28.4%	86,077	11.2%	104,372	-8.3%	56,434	69.6%
8	120,064	86,483	38.8%	95,295	26.0%	128,213	-6.4%	82,363	45.8%
9	154,090	99,955	54.2%	135,924	13.4%	164,514	-6.3%	110,657	39.3%
10	63,163	43,231	46.1%	64,874	-2.6%	68,607	-7.9%	35,704	76.9%
11	222,625	164,384	35.4%	187,425	18.8%	240,199	-7.3%	141,114	57.8%
12	57,934	33,819	71.3%	55,585	4.2%	63,018	-8.1%	33,088	75.1%
16	51,367	36,453	40.9%	49,061	4.7%	54,868	-6.4%	27,444	87.2%
17	92,585	61,035	51.7%	96,715	-4.3%	102,677	-9.8%	54,654	69.4%
19	32,440	18,020	80.0%	30,847	5.2%	36,435	-11.0%	14,822	118.9%
21	41,047	23,170	77.2%	36,341	12.9%	43,066	-4.7%	19,401	111.6%
22	104,819	65,715	59.5%	89,404	17.2%	115,175	-9.0%	51,721	102.7%
24 - Coral Way Limited	58,338	41,366	41.0%	36,237	61.0%	63,559	-8.2%	23,456	148.7%
27	176,270	123,586	42.6%	171,282	2.9%	188,531	-6.5%	110,347	59.7%
29 (*)	7,394	8,169	-9.5%	10,684	-30.8%	11,420	-35.3%	6,966	6.1%
31 - BUSWAY LOCAL	31,036	18,929	64.0%	29,125	6.6%	34,267	-9.4%	15,433	101.1%
32	63,341	43,688	45.0%	56,027	13.1%	68,733	-7.8%	30,453	108.0%
33	45,976	31,735	44.9%	40,918	12.4%	53,602	-14.2%	22,817	101.5%
34 EXPRESS	33,072	21,070	57.0%	40,159	-17.6%	38,980	-15.2%	20,625	60.3%
35	68,916	39,466	74.6%	59,041	16.7%	73,748	-6.6%	36,243	90.1%
36	67,687	48,298	40.1%	61,606	9.9%	71,963	-5.9%	35,136	92.6%
37	91,276	68,423	33.4%	82,870	10.1%	97,713	-6.6%	56,465	61.7%
38	178,820	102,780	74.0%	167,379	6.8%	191,549	-6.6%	87,397	104.6%
39 EXPRESS				17,853				5,933	
40	54,925	34,577	58.8%	40,497	35.6%	59,141	-7.1%	24,359	125.5%
42	26,927	18,256	47.5%	20,825	29.3%	27,801	-3.1%	14,258	88.9%
46 - LIBERTY CITY CONN. (*)	220	349	-37.0%	814	-73.0%	484	-54.5%	297	-25.9%
51 - FLAGLER MAX	79,642	61,937	28.6%	62,186	28.1%	85,801	-7.2%	41,888	90.1%
52	31,694	21,277	49.0%	30,522	3.8%	35,002	-9.5%	17,099	85.4%
54	81,258	56,413	44.0%	72,125	12.7%	84,962	-4.4%	45,753	77.6%
55 MARLINS SHUTTLE									
56 (*)	4,377	6,281	-30.3%	7,071	-38.1%	8,264	-47.0%	4,194	4.4%
57	11,430	6,599	73.2%	8,665	31.9%	11,858	-3.6%	6,444	77.4%
62	48,137	30,872	55.9%	46,582	3.3%	50,723	-5.1%	28,081	71.4%
71 (*)	11,584	13,232	-12.5%	16,118	-28.1%	18,588	-37.7%	9,973	16.2%
72 (*)	14,118	14,441	-2.2%	18,433	-23.4%	19,220	-26.5%	10,159	39.0%

METROBUS TOTAL MONTHLY BOARDINGS BY ROUTE

Route Monthly Total	Total Month	Total Month	Percent Change	Total Month	Percent Change	Total Month	Percent Change	Total Month	Percent Change
	Jun-23	Jun-22	YOY	Feb-20	Current vs Feb-20	May-23	MOM	Jun-21	YO2Y
73	72,190	52,257	38.1%	48,767	48.0%	79,733	-9.5%	32,723	120.6%
75	29,436	16,756	75.7%	31,994	-8.0%	35,195	-16.4%	16,205	81.6%
77	223,378	131,839	69.4%	174,833	27.8%	240,120	-7.0%	123,918	80.3%
79 STREET MAX	11,101	6,257	77.4%	7,228	53.6%	12,218	-9.1%		
82 - WESTCHESTER CIRC. (*)	1,584	1,009	57.0%	1,482	6.9%	1,734	-8.7%	683	131.9%
87	43,624	32,316	35.0%	33,273	31.1%	48,007	-9.1%	23,330	87.0%
88	62,015	43,957	41.1%	54,772	13.2%	68,634	-9.6%	41,484	49.5%
93 - BISCAYNE MAX	76,782	45,738	67.9%	66,684	15.1%	80,610	-4.7%	31,492	143.8%
95 EXPRESS	23,752	16,789	41.5%	33,796	-29.7%	24,146	-1.6%	11,618	104.4%
99	44,786	29,955	49.5%	36,325	23.3%	49,617	-9.7%	23,454	91.0%
101 - A (*)	1,980	4,652	-57.4%	4,114	-51.9%	5,451	-63.7%	3,318	-40.3%
102 - B	52,819	33,222	59.0%	42,683	23.7%	56,589	-6.7%	31,228	69.1%
103 - C				11,682				4,863	
104	23,487	12,869	82.5%	20,351	15.4%	25,473	-7.8%	12,313	90.7%
105 - E	34,659	24,098	43.8%	31,302	10.7%	38,097	-9.0%	21,009	65.0%
107 - G	50,663	32,733	54.8%	43,178	17.3%	55,586	-8.9%	26,974	87.8%
108 - H	14,380	9,402	52.9%	12,624	13.9%	17,574	-18.2%	6,897	108.5%
110 - J	79,113	55,587	42.3%	66,481	19.0%	87,294	-9.4%	56,573	39.8%
112 - L	232,307	155,149	49.7%	200,268	16.0%	245,694	-5.4%	159,178	45.9%
113 - M	24,403	12,395	96.9%	21,548	13.2%	26,349	-7.4%	9,352	160.9%
115 (*)	3,032	3,970	-23.6%	4,334	-30.0%	4,157	-27.1%	5,369	-43.5%
119 - S	267,738	190,265	40.7%	242,257	10.5%	289,787	-7.6%	196,512	36.2%
120 - BEACH MAX	173,583	126,525	37.2%	170,942	1.5%	185,793	-6.6%	110,224	57.5%
132 TRI-RAIL (DORAL)	986	27	3551.9%	312	216.0%	1,152	-14.4%	226	336.3%
135 (*)	34,299	20,298	69.0%	32,067	7.0%	40,172	-14.6%	16,983	102.0%
136	3,373	2,322	45.3%	2,524	33.6%	3,441	-2.0%	1,609	109.6%
137 - WEST DADE CONN.	56,511	37,119	52.2%	41,167	37.3%	62,058	-8.9%	22,549	150.6%
150 - MIAMI BEACH AIRPORT FLYER	60,769	39,602	53.4%	51,651	17.7%	67,042	-9.4%	40,223	51.1%
155 - BISCAYNE GARDENS CIRCULATOR (*)	1,211	883	37.1%	881	37.5%	1,210	0.1%	451	168.5%
175 - NW MIAMI-DADE EXPRESS				661					
183	85,992	52,956	62.4%	77,570	10.9%	96,262	-10.7%	46,767	83.9%
195 EXPRESS - BROWARD BLVD				7,441					
196 EXPRESS - SHERIDAN ST				7,658					
200 - CUTLER BAY LOCAL	4,261	1,428	198.4%	3,984	7.0%	5,442	-21.7%	2,043	108.6%
202 - LITTLE HAITI CONN. (*)	2,437	2,776	-12.2%	3,200	-23.8%	1,879	29.7%	2,659	-8.3%
204 KILLIAN KAT	15,165	10,728	41.4%	21,418	-29.2%	16,820	-9.8%		

METROBUS TOTAL MONTHLY BOARDINGS BY ROUTE

Route Monthly Total	Total Month	Total Month	Percent Change	Total Month	Percent Change	Total Month	Percent Change	Total Month	Percent Change
	Jun-23	Jun-22	YOY	Feb-20	Current vs Feb-20	May-23	MOM	Jun-21	YO2Y
207 (7st) - LITTLE HAVANA CIRC	44,397	26,016	70.7%	38,127	16.4%	47,465	-6.5%	18,591	138.8%
208 (8st) - LITTLE HAVANA CIRC	42,485	25,444	67.0%	35,018	21.3%	42,812	-0.8%	16,526	157.1%
210 - SKYLAKE CIRC (*)	5,288	8,400	-37.0%	7,033	-24.8%	9,894	-46.6%	7,004	-24.5%
211 - OVERTOWN CIRC. (*)	1,909	1,986	-3.9%	1,159	64.7%	1,966	-2.9%	598	219.2%
212 - SWEETWATER CIRC. (*)	591	482	22.6%	295	100.3%	500	18.2%	557	6.1%
217 - BUNCHE PARK CIRC (*)	769	1,260	-39.0%	1,949	-60.5%	1,540	-50.1%	995	-22.7%
238 EAST/WEST CONN.	13,140	8,188	60.5%	8,987	46.2%	13,646	-3.7%	6,125	114.5%
241 TUTTLE LIMITED	7,968	1,970	304.5%			9,505	-16.2%		
246 - NIGHT OWL (*)	1,225	1,519	-19.4%	2,641	-53.6%	1,847	-33.7%	52	2255.8%
248 - PRINCETON CIRCULATOR (*)	781	1,693	-53.9%	2,690	-71.0%	2,272	-65.6%	1,729	-54.8%
252 - CORAL REEF MAX	24,955	14,426	73.0%	19,325	29.1%	26,822	-7.0%	10,264	143.1%
254 - BROWNSVILLE CIRC. (*)	170	128	32.8%	384	-55.7%	160	6.3%	1,015	-83.3%
267 - LUDLAM LIMITED (*)	2,330	3,123	-25.4%	2,978	-21.8%	3,722	-37.4%	2,116	10.1%
272 SUNSET KAT (*)	4,969	6,816	-27.1%	11,004	-54.8%	10,002	-50.3%	6,107	-18.6%
277 - 7th AVENUE MAX	16,852	8,337	102.1%	13,669	23.3%	18,896	-10.8%	6,642	153.7%
286 - NORTH POINTE CIRC. (*)	1,853	1,518	22.1%	2,145	-13.6%	2,634	-29.7%	819	126.3%
287 - SAGA BAY MAX	6,886	4,271	61.2%	7,160	-3.8%	7,093	-2.9%	3,219	113.9%
288 - KENDALL CRUISER	10,002	8,904	12.3%	15,249	-34.4%	10,037	-0.3%		
295 EXPRESS - BROWARD BLVD - CIVIC CENTER				4,668					
296 EXPRESS - SHERIDAN ST - CIVIC CENTER				4,297					
297-27th AVENUE ORANGE MAX	25,028	17,373	44.1%	27,125	-7.7%	28,210	-11.3%	12,052	107.7%
301 DADE-MONROE EXPRESS (*)	29,356	21,958	33.7%	23,838	23.1%	28,915	1.5%	28,968	1.3%
302 CARD SOUND EXPRESS (*)	2,873	2,327	23.5%	2,236	28.5%	3,058	-6.0%	2,129	34.9%
338 - WEEKEND EXPRESS	1,712	825	107.5%	2,191	-21.9%	1,978	-13.4%	1,158	47.8%
344 (*)	714	948	-24.7%	1,919	-62.8%	1,677	-57.4%	1,448	-50.7%
500	2,155	356	505.3%	2,301	-6.3%	2,288	-5.8%	5	43000.0%
836 EXPRESS	6,773	3,108	117.9%			8,260	-18.0%	1,525	344.1%
837 EXPRESS	3,200					3,328	-3.8%		
12/21 WEEKEND INTERL.	19,847	12,118	63.8%	20,830	-4.7%	23,537	-15.7%	10,873	82.5%
GREEN HILLS SHUTTLE (*)	19	23	-17.4%	36	-47.2%	28	-32.1%	73	-74.0%
KINGS CREEK SHUTTLE (*)	54	104	-48.1%	52	3.8%	44	22.7%	73	-26.0%
SIERRA LAKES SHUTTLE (*)	86	74	16.2%	180	-52.2%	61	41.0%	63	36.5%
ROBERT SHARP SHUTTLE (*)	78	78	0.0%	38	105.3%	96	-18.8%	103	-24.3%
AHEPA SHUTTLE (*)	90	73	23.3%	83	8.4%	94	-4.3%	86	4.7%
FEDERATION GARDENS SHUTTLE (*)	91	134	-32.1%	142	-35.9%	76	19.7%	66	37.9%
Total	4,545,050	3,064,059	48.3%	4,123,083	10.2%	4,953,197	-8.2%	2,672,570	70.1%

YEAR-OVER-YEAR BUS RIDERSHIP BY ROUTE SERVICE TYPE

Boardings by Service Type and Route	Average Weekday	Average Weekday	Percent Change	Average Saturday	Average Saturday	Percent Change	Average Sunday	Average Sunday	Percent Change	Total Monthly	Total Monthly	Percent Change
	Jun-23	Jun-22	23 vs 22	Jun-23	Jun-22	23 vs 22	Jun-23	Jun-22	23 vs 22	Jun-23	Jun-22	23 vs 22
Directly Operated Express Routes (1)												
34 EXPRESS	1,503	958	57.0%							33,072	21,070	57.0%
39 EXPRESS												
95-EXPRESS	1,080	763	41.5%							23,752	16,789	41.5%
150-MIAMI BEACH AIRPORT FLYER	2,110	1,338	57.7%	1,902	1,267	50.1%	1,685	1,277	32.0%	60,769	39,602	53.4%
175 - NW MIAMI-DADE EXPRESS												
195 EXPRESS - BROWARD BLVD												
196 EXPRESS - SHERIDAN ST												
295 EXPRESS - BROWARD BLVD - CIVIC CENTER												
296 EXPRESS - SHERIDAN ST - CIVIC CENTER												
204 KAT-KILLIAN	689	488	41.4%							15,165	10,728	41.4%
288 KENDALL CRUISER	455	405	12.3%							10,002	8,904	12.3%
338 - WEEKEND EXPRESS				225	186	20.8%	203	113	79.5%	1,712	825	107.5%
836 EXPRESS	308	141	117.9%							6,773	3,108	117.9%
837 EXPRESS	145									3,200		
Subtotal Express Routes	6,290	4,092	53.7%	2,127	1,453	46.4%	1,889	1,390	35.9%	154,445	101,026	52.9%
Percentage of All Bus Routes	3.6%	3.5%		2.0%	2.2%		2.4%	2.5%		3.4%	3.3%	
Contracted Routes												
1	141	143	-1.5%	173	182	-5.2%	143	218	-34.6%	4,354	4,739	-8.1%
29	336	371	-9.5%							7,394	8,169	-9.5%
46 - LIBERTY CITY CONN.	10	16	-37.0%							220	349	-37.0%
56	199	286	-30.3%							4,377	6,281	-30.3%
71	448	528	-15.2%	255	224	14.0%	177	178	-0.6%	11,584	13,232	-12.5%
72	520	552	-5.8%	398	268	48.5%	270	305	-11.2%	14,118	14,441	-2.2%
82 - WESTCHESTER CIRC	66	38	73.9%	34	44	-23.4%				1,584	1,009	57.0%
101 - A	81	195	-58.5%	36	49	-26.2%	14	41	-67.1%	1,980	4,652	-57.4%
115	117	153	-23.4%	60	90	-32.9%	56	64	-13.3%	3,032	3,970	-23.6%
155 - BISCAYNE GARDENS CIRC	55	40	37.1%							1,211	883	37.1%
202 - LITTLE HAITI CONN.	102	114	-10.3%	26	36	-26.8%	23	34	-32.4%	2,437	2,776	-12.2%
210 - SKYLAKE CIRC	210	325	-35.4%	80	136	-41.4%	87	176	-50.6%	5,288	8,400	-37.0%
211-OVERTOWN CIRC	87	90	-3.9%							1,909	1,986	-3.9%
212-SWEETWATER CIRC	27	22	22.6%							591	482	22.6%
217 - BUNCHE PARK CIRC	35	57	-39.0%							769	1,260	-39.0%
246 - NIGHT OWL	37	50	-25.4%	51	46	10.9%	51	60	-14.7%	1,225	1,519	-19.4%
248 - PRINCETON CIRCULATOR	36	77	-53.9%							781	1,693	-53.9%
254-BROWNSVILLE CIRC	8	6	32.8%							170	128	32.8%
286-NORTH POINTE CIRC	78	61	28.2%	33	44	-25.0%				1,853	1,518	22.1%
344	32	43	-24.7%							714	948	-24.7%
Subtotal Contracted Reg. & Circ. Routes	2,624	3,167	-17.1%	1,146	1,118	2.5%	819	1,075	-23.8%	65,591	78,435	-16.4%
Percentage of All Bus Routes	1.5%	2.7%		1.1%	1.7%		1.0%	2.0%		1.4%	2.6%	

(1) Several express routes were suspended beginning at the end of March 2020, due to the SARS-CoV-2 pandemic, while other routes had alignment and schedule modifications made to them, in an ongoing effort to optimize service delivery..

YEAR-OVER-YEAR BUS RIDERSHIP BY ROUTE SERVICE TYPE

Boardings by Service Type and Route	Average Weekday	Average Weekday	Percent Change	Average Saturday	Average Saturday	Percent Change	Average Sunday	Average Sunday	Percent Change	Total Monthly	Total Monthly	Percent Change
	Jun-23	Jun-22	23 vs 22	Jun-23	Jun-22	23 vs 22	Jun-23	Jun-22	23 vs 22	Jun-23	Jun-22	23 vs 22
Contracted Express Routes												
272 SUNSET-KAT	226	310	-27.1%							4,969	6,816	-27.1%
301-DADE MONROE EXPRESS	1,009	751	34.3%	902	706	27.8%	890	653	36.2%	29,356	21,958	33.7%
302-CARD SOUND EXPRESS	100	84	19.3%	96	56	72.5%	70	63	11.1%	2,873	2,327	23.5%
Subtotal Contracted Express Routes	1,335	1,145	16.6%	998	761	31.1%	960	717	33.9%	37,198	31,101	19.6%
Percentage of All Bus Routes	0.8%	1.0%		0.9%	1.2%		1.2%	1.3%		0.8%	1.0%	
Limited Stop Routes												
24-CORAL WAY LIMITED	2,193	1,575	39.2%	1,443	844	71.0%	1,083	834	29.8%	58,338	41,366	41.0%
51-FLAGLER MAX	3,620	2,815	28.6%							79,642	61,937	28.6%
79 STREET MAX	505	284	77.4%							11,101	6,257	77.4%
93 - BISCAYNE MAX	3,490	2,079	67.9%							76,782	45,738	67.9%
120 - BEACH MAX	6,194	4,769	29.9%	5,912	3,223	83.5%	3,416	2,181	56.6%	173,583	126,525	37.2%
241 TUTTLE LIMITED	296	76	287.7%	206	41	406.1%	157	32	395.3%	7,968	1,970	304.5%
252-CORAL REEF MAX	1,007	585	72.2%	410	220	86.0%	293	171	71.1%	24,955	14,426	73.0%
267-LUDLAM LIMITED (contracted)	106	142	-25.4%							2,330	3,123	-25.4%
277-7TH AVENUE MAX	766	379	102.1%							16,852	8,337	102.1%
287-SAGA BAY MAX	313	194	61.2%							6,886	4,271	61.2%
297-27th AVENUE ORANGE MAX	1,138	790	44.1%							25,028	17,373	44.1%
Subtotal Limited Stop Routes	19,627	13,688	43.4%	7,971	4,328	84.2%	4,949	3,219	53.8%	483,465	331,323	45.9%
Percentage of All Bus Routes	11.4%	11.6%		7.4%	6.7%		6.2%	5.9%		10.6%	10.8%	
Directly Operated Free Routes												
132 -TRI-RAIL DORAL	45	2	1891.9%							986	27	3551.9%
200-CUTLER BAY LOCAL	158	92	72.2%	142	15	822.8%	54	2	2587.5%	4,261	1,428	198.4%
Subtotal Free Directly Operated Routes	203	94	115.7%	142	15	822.8%	54	2	2587.5%	5,247	1,455	260.6%
Percentage of All Bus Routes	0.1%	0.1%		0.1%	0.0%		0.1%	0.0%		0.1%	0.0%	
Shuttles												
55-MARLINS SHUTTLE												
Percentage of All Bus Routes												
Contractor-Operated Lifeline Routes												
GREEN HILLS SHUTTLE	5	6	-17.4%							19	23	-17.4%
KINGS CREEK SHUTTLE	11	21	-48.1%							54	104	-48.1%
SIERRA LAKES SHUTTLE	17	19	-7.0%							86	74	16.2%
ROBERT SHARP SHUTTLE	20	16	25.0%							78	78	0.0%
AHEPA SHUTTLE	18	15	23.3%							90	73	23.3%
FEDERATION GARDENS SHUTTLE				23	34	-32.1%				91	134	-32.1%
Subtotal Contractor-Operated Lifeline Routes	70	75	-6.6%	23	34	-32.1%				418	486	-14.0%
Percentage of All Bus Routes	0.0%	0.1%		0.0%	0.1%					0.0%	0.0%	
All Other (Regular) Routes												
Percentage of All Bus Routes	82.5%	81.1%	49.4%	88.5%	88.2%	66.9%	70,944	48,543	46.1%	3,798,686	2,520,233	50.7%
Percentage of All Bus Routes	82.5%	81.1%		88.5%	88.2%		89.1%	88.3%		83.6%	82.3%	
Total Bus System	172,509	117,563	46.7%	108,155	65,066	66.2%	79,614	54,945	44.9%	4,545,050	3,064,059	48.3%

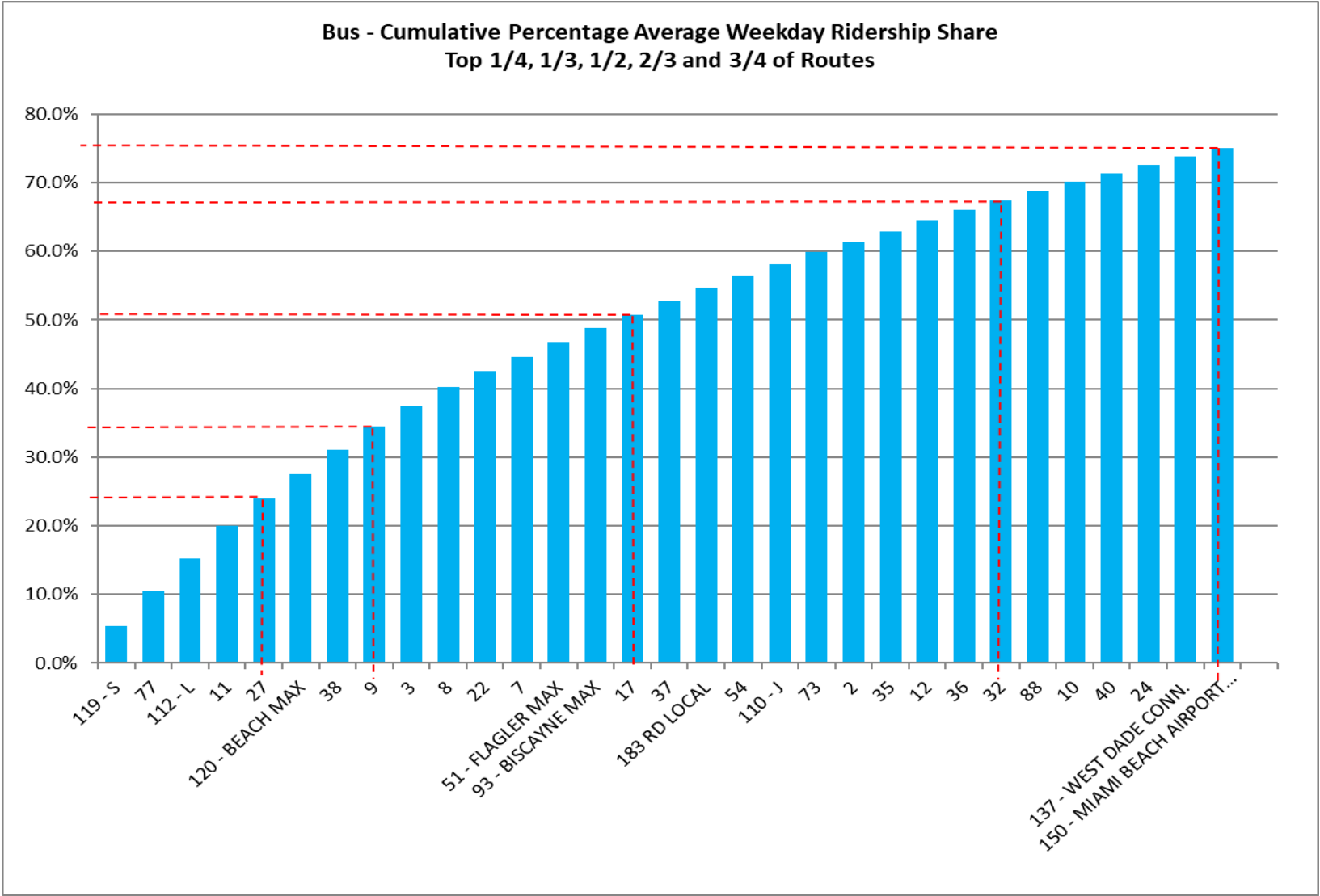
Bus Routes as Ranked by Percentage of Average Weekday Ridership June 2023

Rank	Route	Average Weekday	Percent Share	Cumul Pct Share	Rank	Route	Average Weekday	Percent Share	Cumul Pct Share	Rank	Route	Average Weekday	Percent Share	Cumul Pct Share	
1	119	9,287	5.4%	5.4%	36	87	1,807	1.0%	80.6%	71	56	199	0.1%	99.0%	
2	77	8,592	5.0%	10.4%	37	62	1,771	1.0%	81.6%	72	200	158	0.1%	99.1%	
3	112	8,394	4.9%	15.2%	38	33	1,747	1.0%	82.6%	73	136	153	0.1%	99.2%	
4	11	8,252	4.8%	20.0%	39	207	1,712	1.0%	83.6%	74	837	145	0.1%	99.2%	
5	27	6,739	3.9%	23.9%	40	99	1,702	1.0%	84.6%	75	1	141	0.1%	99.3%	
6	120	6,194	3.6%	27.5%	41	208	1,589	0.9%	85.5%	76	115	117	0.1%	99.4%	
7	38	6,064	3.5%	31.0%	42	34	1,503	0.9%	86.4%	77	267	106	0.1%	99.5%	
8	9	5,902	3.4%	34.4%	43	19	1,475	0.9%	87.3%	78	202	102	0.1%	99.5%	
9	3	5,212	3.0%	37.5%	44	135	1,394	0.8%	88.1%	79	302	100	0.1%	99.6%	
10	8	4,662	2.7%	40.2%	45	105	1,338	0.8%	88.8%	80	211	87	0.1%	99.6%	
11	22	4,023	2.3%	42.5%	46	52	1,228	0.7%	89.5%	81	101	81	0.0%	99.7%	
12	7	3,695	2.1%	44.6%	47	75	1,199	0.7%	90.2%	82	286	78	0.0%	99.7%	
13	51	3,620	2.1%	46.7%	48	297	1,138	0.7%	90.9%	83	500	73	0.0%	99.8%	
14	93	3,490	2.0%	48.8%	49	31	1,087	0.6%	91.5%	84	82	66	0.0%	99.8%	
15	17	3,464	2.0%	50.8%	50	95	1,080	0.6%	92.2%	85	155	55	0.0%	99.8%	
16	37	3,454	2.0%	52.8%	51	42	1,033	0.6%	92.8%	86	132	45	0.0%	99.9%	
17	183	3,256	1.9%	54.7%	52	301	1,009	0.6%	93.3%	87	246	37	0.0%	99.9%	
18	54	3,093	1.8%	56.5%	53	252	1,007	0.6%	93.9%	88	248	36	0.0%	99.9%	
19	110	2,922	1.7%	58.2%	54	113	916	0.5%	94.5%	89	217	35	0.0%	99.9%	
20	73	2,915	1.7%	59.8%	55	104	903	0.5%	95.0%	90	344	32	0.0%	99.9%	
21	2	2,701	1.6%	61.4%	56	277	766	0.4%	95.4%	91	212	27	0.0%	99.9%	
22	35	2,658	1.5%	62.9%	57	204	689	0.4%	95.8%	92	RS	20	0.0%	100.0%	
23	12	2,633	1.5%	64.5%	58	238	597	0.3%	96.2%	93	AS	18	0.0%	100.0%	
24	36	2,576	1.5%	66.0%	59	72	520	0.3%	96.5%	94	SL	17	0.0%	100.0%	
25	32	2,524	1.5%	67.4%	60	57	520	0.3%	96.8%	95	KC	11	0.0%	100.0%	
26	88	2,276	1.3%	68.8%	61	108	507	0.3%	97.1%	96	46	10	0.0%	100.0%	
27	10	2,269	1.3%	70.1%	62	79	505	0.3%	97.4%	97	254	8	0.0%	100.0%	
28	40	2,229	1.3%	71.4%	63	288	455	0.3%	97.6%	98	GH	5	0.0%	100.0%	
29	24	2,193	1.3%	72.6%	64	71	448	0.3%	97.9%						
30	137	2,140	1.2%	73.9%	65	29	336	0.2%	98.1%						
31	150	2,110	1.2%	75.1%	66	287	313	0.2%	98.3%						
32	102	2,060	1.2%	76.3%	67	836	308	0.2%	98.4%						
33	107	1,890	1.1%	77.4%	68	241	296	0.2%	98.6%						
34	21	1,866	1.1%	78.5%	69	272	226	0.1%	98.7%						
35	16	1,860	1.1%	79.5%	70	210	210	0.1%	98.9%						
												entirely contracted			
Total Boardings												172,509	100.0%	100.0%	

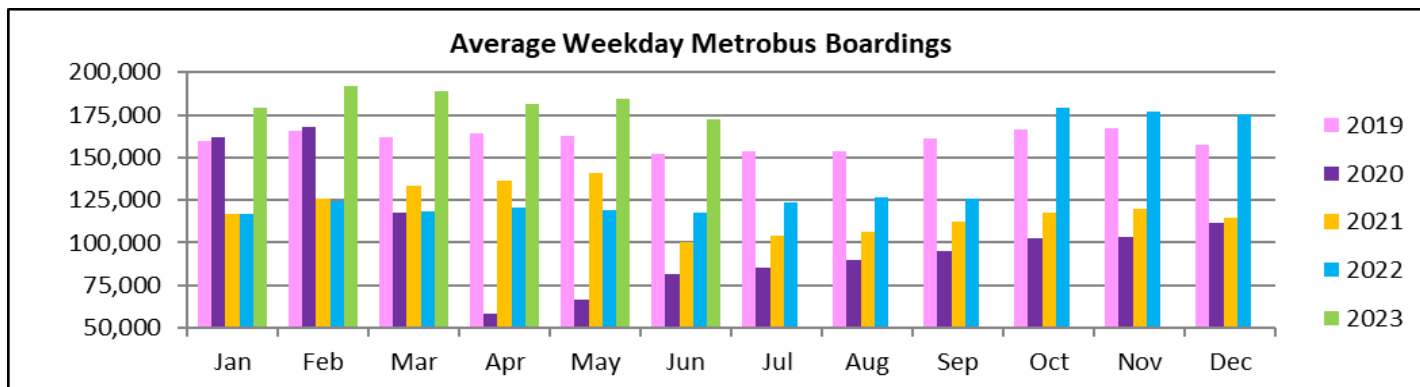
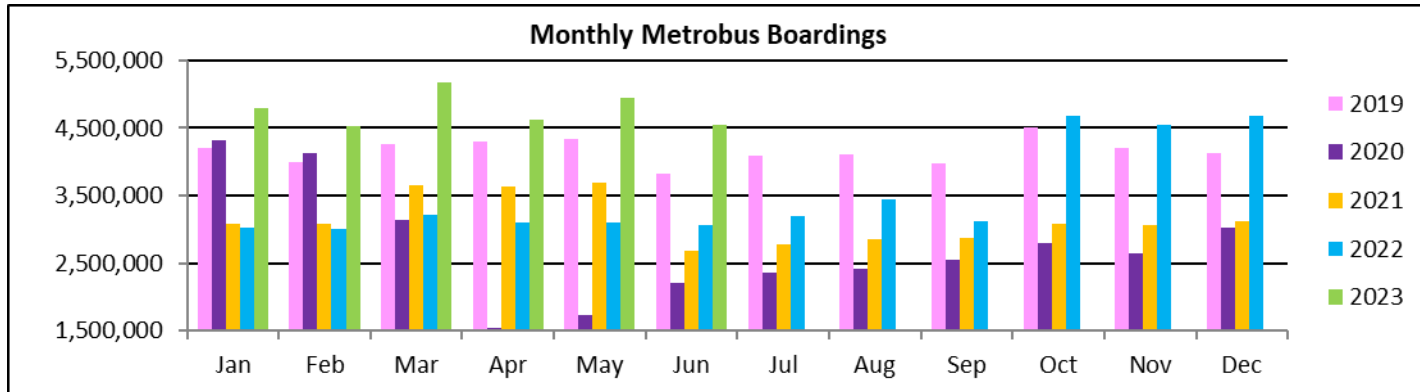
(1) Average weekday ridership rounded to the nearest unit.

(2) Includes the five Lifeline Shuttles that operate on weekdays: Ahepa, Green Hills, Kings Creek, Robert Sharp and Sierra Lakes.

METROBUS CUMULATIVE PERCENTAGE RIDERSHIP SHARE



TOTAL MONTHLY AND AVERAGE WEEKDAY RIDERSHIP YEAR OVER YEAR COMPARISON CHARTS – METROBUS

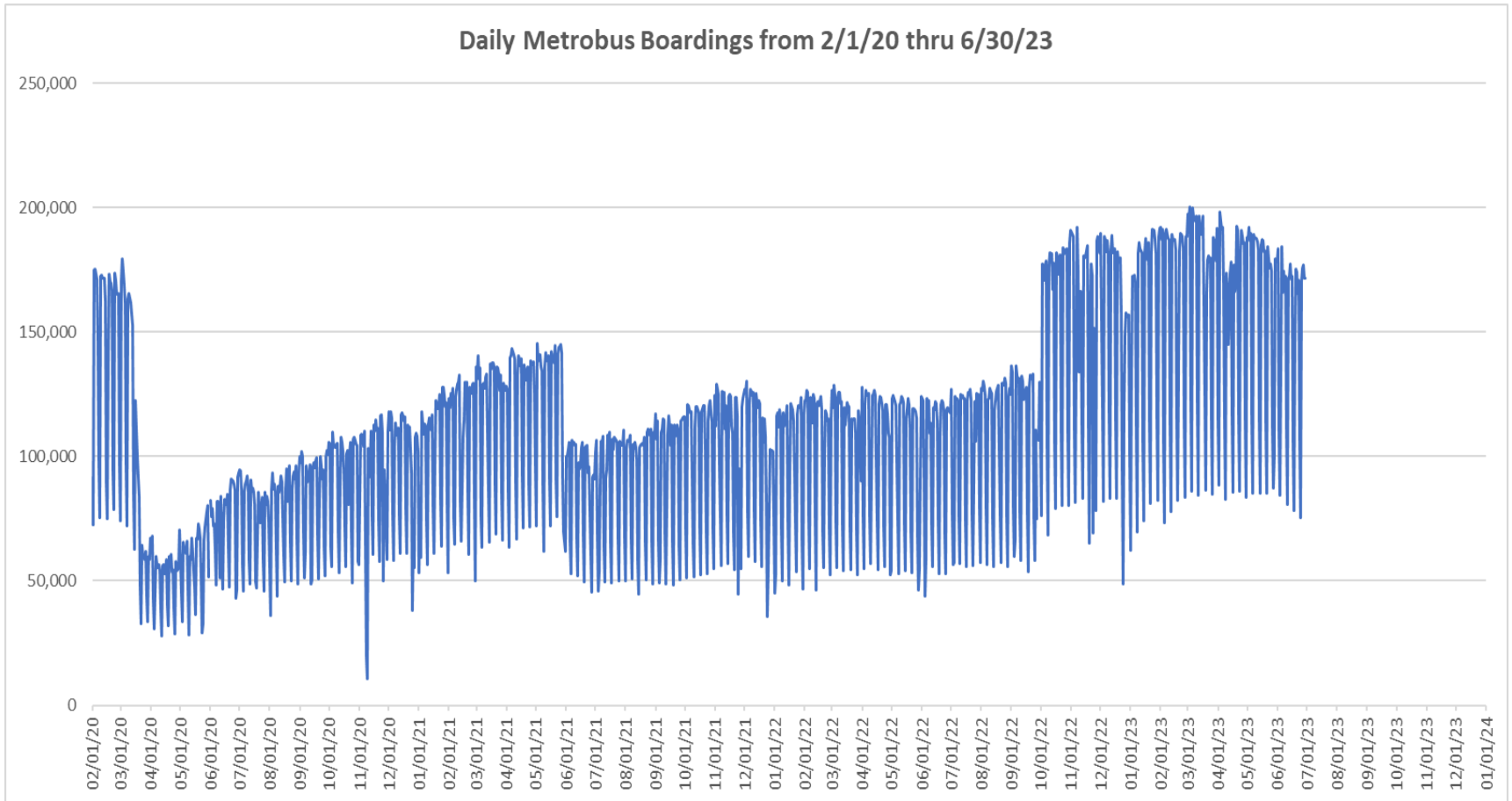


**“TOP 5 / BOTTOM 5” BUS ROUTES AVERAGE WEEKDAY RIDERSHIP PERFORMANCE
YEAR OVER YEAR COMPARISONS**

Route	Jun-23	Jun-22	Absolute Delta (1)	Percent Delta (2)
77	8,592	5,017	3,575	71.3%
112 - L	8,394	5,660	2,735	48.3%
119 - S	9,287	6,759	2,528	37.4%
38	6,064	3,652	2,412	66.0%
9	5,902	3,815	2,087	54.7%
210 - SKYLAKE CIRC (*)	210	325	-115	-35.4%
101 - A (*)	81	195	-114	-58.5%
56 (*)	199	286	-87	-30.3%
272 SUNSET KAT (*)	226	310	-84	-27.1%
71 (*)	448	528	-80	-15.2%

- (1) Averages rounded to the nearest boarding, data as reported by farebox (NFS) and/or automatic passenger counter (APC) system, depending on year; Lifeline shuttles excluded.
- (2) As a result of the SARS-CoV-2 pandemic, rides were fare-free beginning March 22, 2020. Fares were reinstated June 1, 2021, and ridership data from the farebox rather than the APC system is utilized from that date thru the end of September 2022. Beginning October 1, 2022, ridership is again reported from the APC system coupled with a new enhanced sensor system.
- (*) Contracted route.

DAILY METROBUS RIDERSHIP SINCE FEBRUARY 1, 2020



- (1) National Emergency was declared on 3/13/20 as a result of the SARS-CoV-2 pandemic.
- (2) There was no Metrobus, Metrorail and Metromover service on 5/31/20, as a safety precaution, and no service for any of the four modes on 9/28/22 as a result of Hurricane Ian..
- (3) The dip at the start of the second week of November 2020 is due to Hurricane Eta.
- (4) The reduction seen beginning 6/1/21 is partly due to the resumption of fares and partly the result of resuming reporting Cubic farebox data rather than bus APC counts; the jump seen at the start of October 2022 is due to the return to APC bus ridership counts reporting on 10/1/22.
- (5) Periodic (weekly) variations are prominent, since weekday ridership is almost always significantly higher than weekend or holiday ridership.

METROBUS PARKING PATRONAGE SUMMARY

June 2023

PARK-RIDE LOT	ACTUAL AVAILABLE SPACES	ACTUAL OCCUPANCY	PERCENT OCCUPANCY
Transitway / SW 152nd St	200	125	63%
Transitway / SW 168th St (*)	149	0	0%
Transitway / SW 200th Street	100	33	33%
Transitway / SW 112 Ave (Target)	450	127	28%
Transitway / SW 244th St	95	71	75%
Transitway / SW 296th St	139	27	19%
Transitway / SW 344th St	248	195	79%
Coral Reef Drive 117/ Turnpike	95	74	78%
Golden Glades Facility	2,150	368	17%
Hammocks Town Center (SW 152 Ave / SW 104 St)	50	25	50%
Kendall Dr./SW 127th Ave	161	9	6%
West Kendall Transit Term (Kendall Dr / SW162 Ave)	40	7	18%
NW 7th Avenue Transit Village (NW 7 Ave / NW 62 St)	25	22	88%
Miami Gardens Dr. / NW 73rd Ave	136	2	1%
Dolphin Station	348	78	22%
Tamiami Station (eff 11-2022)	442	47	11%
I-75 / Miami Gardens Dr (**)	298	0	0%
TOTAL	5,126	1,210	24%

(*) Closed for construction beginning January 2022

(**) Route 175 Suspended 3/27/2020

Metrorail



June 2023

METRORAIL AVERAGE WEEKDAY BOARDINGS BY STATION (†)

Weekdays	Average Weekday	Average Weekday	Percent Change	Average Weekday	Percent Change	Average Weekday	Percent Change	Average Weekday	Percent Change
STATIONS	Jun-23	Jun-22	YOY	Feb-20	Current vs Feb-20	May-23	MOM	Jun-21	YO2Y
ALLAPATTAH	1,559	1,382	12.8%	1,942	-19.7%	1,634	-4.6%	972	60.5%
BRICKELL	4,688	4,085	14.8%	6,529	-28.2%	5,079	-7.7%	3,012	55.7%
BROWNSVILLE	587	617	-4.9%	862	-31.9%	671	-12.5%	512	14.7%
CIVIC CENTER	4,122	3,399	21.3%	6,143	-32.9%	4,027	2.4%	2,510	64.2%
COCONUT GROVE	1,345	1,223	10.0%	1,795	-25.1%	1,470	-8.5%	937	43.5%
CULMER	914	775	17.9%	1,392	-34.4%	1,062	-14.0%	659	38.6%
DADELAND NORTH	3,771	3,200	17.8%	5,926	-36.4%	4,013	-6.0%	2,171	73.7%
DADELAND SOUTH	4,265	3,626	17.6%	7,150	-40.4%	4,537	-6.0%	2,725	56.5%
DOUGLAS ROAD	1,238	2,333	-47.0%	3,624	-65.9%	740	67.3%	1,702	-27.3%
DR. MARTIN LUTHER KING, JR.	811	753	7.8%	1,157	-29.9%	839	-3.3%	607	33.7%
EARLINGTON HEIGHTS	1,260	1,122	12.2%	1,662	-24.2%	1,285	-2.0%	794	58.7%
GOVERNMENT CENTER	6,092	5,358	13.7%	10,557	-42.3%	6,505	-6.3%	3,912	55.7%
HIALEAH	789	924	-14.7%	1,253	-37.1%	965	-18.2%	703	12.1%
MIAMI INTERNATIONAL AIRPORT	1,291	1,070	20.6%	1,711	-24.6%	1,343	-3.9%	704	83.4%
NORTHSIDE	1,249	1,101	13.4%	1,476	-15.4%	1,298	-3.8%	805	55.1%
OKEECHOBEE	857	727	17.9%	1,164	-26.4%	908	-5.6%	601	42.7%
OVERTOWN / ARENA	1,654	1,289	28.3%	2,274	-27.3%	1,741	-5.0%	726	127.9%
PALMETTO	1,245	1,042	19.5%	1,543	-19.3%	1,310	-5.0%	742	67.7%
SANTA CLARA	644	557	15.6%	812	-20.7%	682	-5.7%	419	53.6%
SOUTH MIAMI	1,647	1,629	1.1%	3,015	-45.4%	1,888	-12.8%	1,297	27.0%
TRI-RAIL	1,032	931	10.9%	1,207	-14.5%	1,126	-8.3%	704	46.7%
UNIVERSITY	1,250	1,069	16.9%	2,784	-55.1%	1,445	-13.5%	604	107.0%
VIZCAYA	1,018	878	15.9%	1,390	-26.8%	1,182	-13.9%	633	60.8%
TOTAL	43,325	39,090	10.8%	67,367	-35.7%	45,749	-5.3%	28,448	52.3%

(†) In this table and those which follow, "YOY" stands for "year-over-year", "MOM" for "month-over-month" and "YO2Y" for "year over two years", i.e., current month vs 12 months prior, one month prior and 24 months prior, respectively.

(††) Due to effects from the SARS-CoV-2 pandemic; rides were fare-free beginning March 22, 2020; fares were reinstated on June1, 2021, in part accounting for the drop in ridership from May 2021.

METRORAIL AVERAGE SATURDAY BOARDINGS BY STATION

Saturdays	Average Saturday	Average Saturday	Percent Change	Average Saturday	Percent Change	Average Saturday	Percent Change	Average Saturday	Percent Change
STATIONS	Jun-23	Jun-22	YOY	Feb-20	Current vs Feb-20	May-23	MOM	Jun-21	YO2Y
ALLAPATTAH	844	769	9.8%	1,051	-19.7%	896	-5.8%	600	40.6%
BRICKELL	2,251	2,090	7.7%	2,811	-19.9%	2,461	-8.5%	1,771	27.1%
BROWNSVILLE	391	372	5.0%	520	-24.8%	429	-8.9%	326	20.0%
CIVIC CENTER	715	612	16.9%	959	-25.5%	689	3.8%	517	38.4%
COCONUT GROVE	711	621	14.5%	928	-23.4%	838	-15.2%	528	34.8%
CULMER	487	406	19.9%	721	-32.4%	484	0.6%	393	24.1%
DADELAND NORTH	1,295	1,186	9.1%	1,994	-35.1%	1,426	-9.2%	956	35.4%
DADELAND SOUTH	1,857	1,531	21.3%	2,625	-29.3%	1,957	-5.1%	1,290	44.0%
DOUGLAS ROAD	387	1,035	-62.6%	1,319	-70.7%	390	-0.9%	839	-53.9%
DR. MARTIN LUTHER KING, JR.	470	406	15.8%	625	-24.7%	467	0.6%	353	33.1%
EARLINGTON HEIGHTS	728	639	13.8%	935	-22.2%	751	-3.0%	522	39.4%
GOVERNMENT CENTER	2,604	2,255	15.5%	4,262	-38.9%	2,817	-7.6%	1,851	40.6%
HIALEAH	370	467	-20.8%	583	-36.5%	472	-21.5%	366	1.2%
MIAMI INTERNATIONAL AIRPORT	961	845	13.7%	1,330	-27.8%	976	-1.6%	570	68.5%
NORTHSIDE	772	658	17.3%	878	-12.1%	820	-5.9%	540	42.8%
OKEECHOBEE	319	257	24.5%	408	-21.8%	321	-0.5%	300	6.4%
OVERTOWN / ARENA	586	458	28.0%	678	-13.6%	681	-14.0%	332	76.7%
PALMETTO	377	335	12.5%	458	-17.7%	429	-12.1%	262	44.2%
SANTA CLARA	329	292	12.8%	422	-21.9%	344	-4.3%	246	34.0%
SOUTH MIAMI	807	775	4.1%	1,256	-35.8%	869	-7.2%	648	24.5%
TRI-RAIL	470	388	21.3%	614	-23.5%	539	-12.7%	340	38.2%
UNIVERSITY	387	359	7.7%	714	-45.9%	531	-27.1%	218	77.7%
VIZCAYA	491	413	18.9%	622	-21.0%	535	-8.2%	365	34.6%
TOTAL	18,605	17,167	8.4%	26,714	-30.4%	20,118	-7.5%	14,129	31.7%

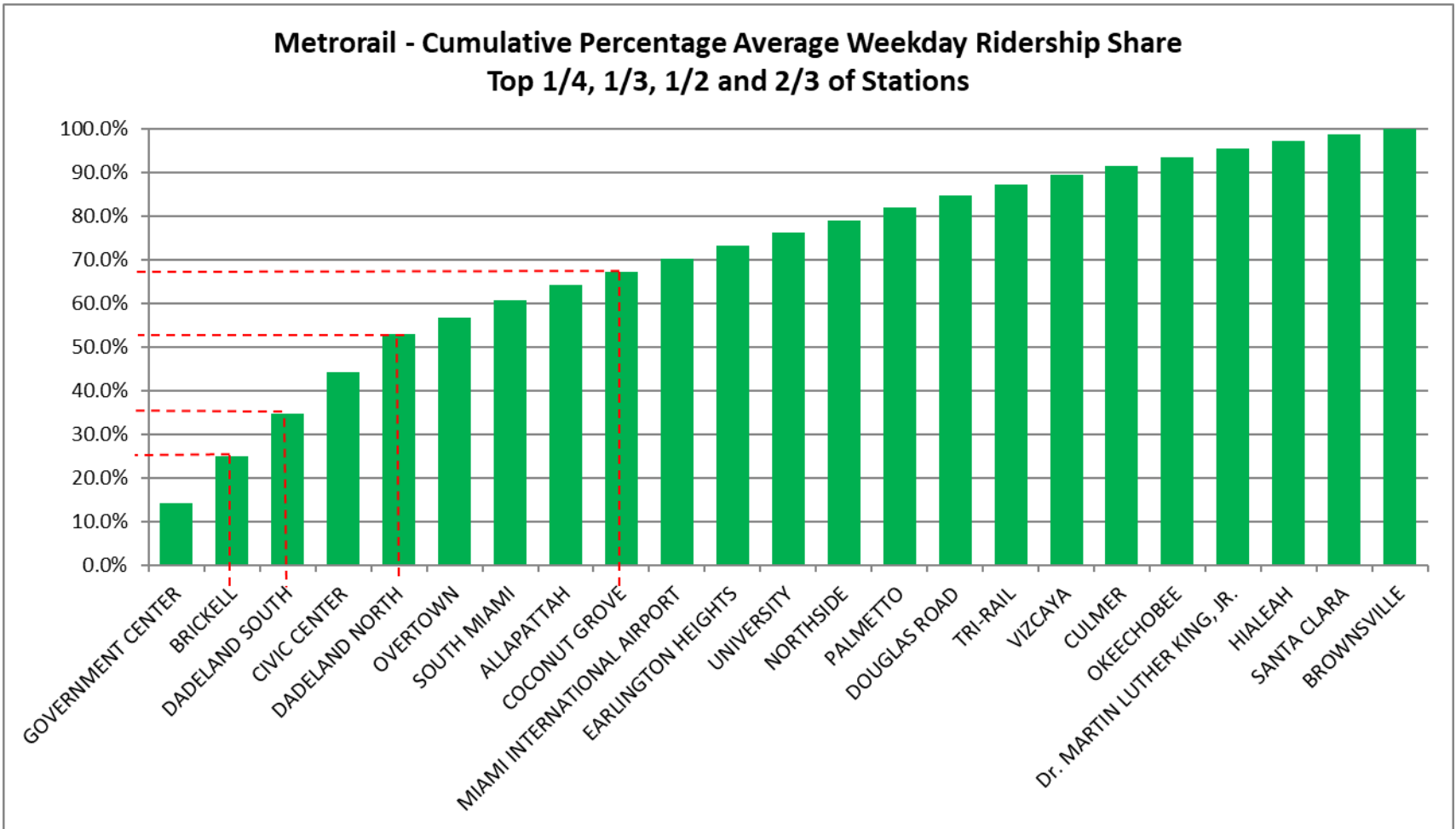
METRORAIL AVERAGE SUNDAY BOARDINGS BY STATION

Sundays	Average Sunday	Average Sunday	Percent Change	Average Sunday	Percent Change	Average Sunday	Percent Change	Average Sunday	Percent Change
STATIONS	Jun-23	Jun-22	YOY	Feb-20	Current vs Feb-20	May-23	MOM	Jun-21	YO2Y
ALLAPATTAH	612	619	-1.0%	791	-22.6%	622	-1.5%	399	53.5%
BRICKELL	1,706	1,713	-0.4%	2,379	-28.3%	1,810	-5.7%	1,369	24.6%
BROWNSVILLE	279	281	-0.7%	406	-31.3%	268	4.2%	248	12.4%
CIVIC CENTER	578	526	10.0%	791	-26.9%	517	12.0%	412	40.4%
COCONUT GROVE	505	525	-3.9%	838	-39.8%	625	-19.3%	419	20.5%
CULMER	329	358	-8.0%	616	-46.6%	366	-9.9%	297	10.8%
DADELAND NORTH	950	939	1.1%	1,685	-43.7%	966	-1.7%	756	25.6%
DADELAND SOUTH	1,404	1,328	5.7%	2,210	-36.5%	1,422	-1.2%	1,039	35.1%
DOUGLAS ROAD	314	802	-60.9%	1,090	-71.2%	249	26.0%	573	-45.3%
DR. MARTIN LUTHER KING, JR.	349	340	2.7%	506	-31.0%	328	6.4%	247	41.6%
EARLINGTON HEIGHTS	545	527	3.4%	799	-31.8%	533	2.3%	375	45.3%
GOVERNMENT CENTER	1,947	1,953	-0.3%	4,044	-51.9%	2,062	-5.6%	1,402	38.8%
HIALEAH	288	350	-17.7%	472	-39.0%	386	-25.4%	262	9.9%
MIAMI INTERNATIONAL AIRPORT	894	835	7.0%	1,343	-33.5%	982	-9.0%	568	57.4%
NORTHSIDE	581	522	11.4%	653	-10.9%	578	0.6%	425	36.9%
OKEECHOBEE	241	159	51.9%	273	-11.9%	220	9.7%	157	53.3%
OVERTOWN / ARENA	456	403	13.1%	544	-16.3%	465	-1.9%	274	66.3%
PALMETTO	247	190	30.0%	336	-26.5%	238	3.8%	157	57.1%
SANTA CLARA	219	236	-7.1%	280	-21.7%	224	-2.1%	151	45.3%
SOUTH MIAMI	540	634	-14.9%	987	-45.3%	602	-10.4%	459	17.5%
TRI-RAIL	341	323	5.8%	528	-35.3%	381	-10.3%	280	21.8%
UNIVERSITY	304	298	2.2%	608	-50.0%	342	-11.0%	164	85.8%
VIZCAYA	333	345	-3.5%	524	-36.6%	344	-3.3%	277	19.9%
TOTAL	13,960	14,200	-1.7%	22,701	-38.5%	14,526	-3.9%	10,710	30.3%

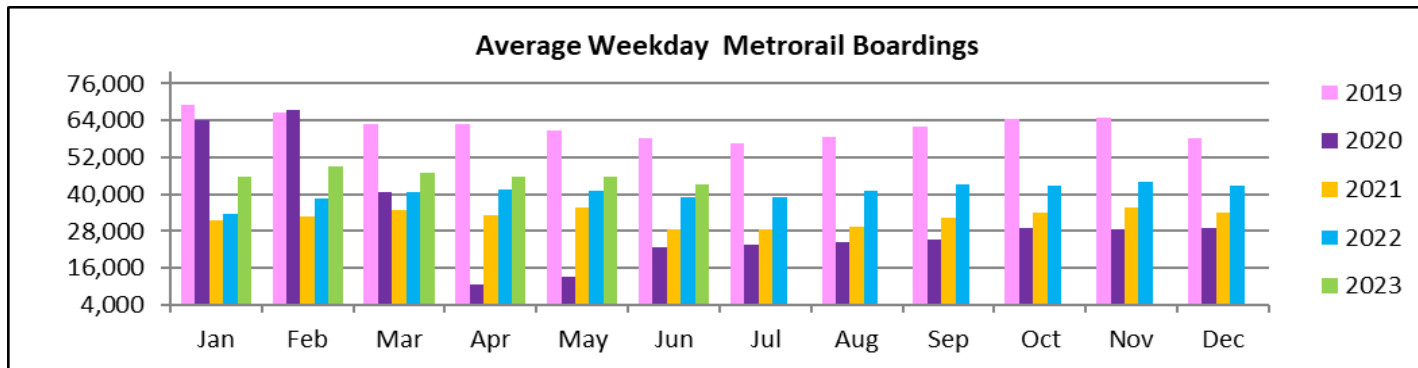
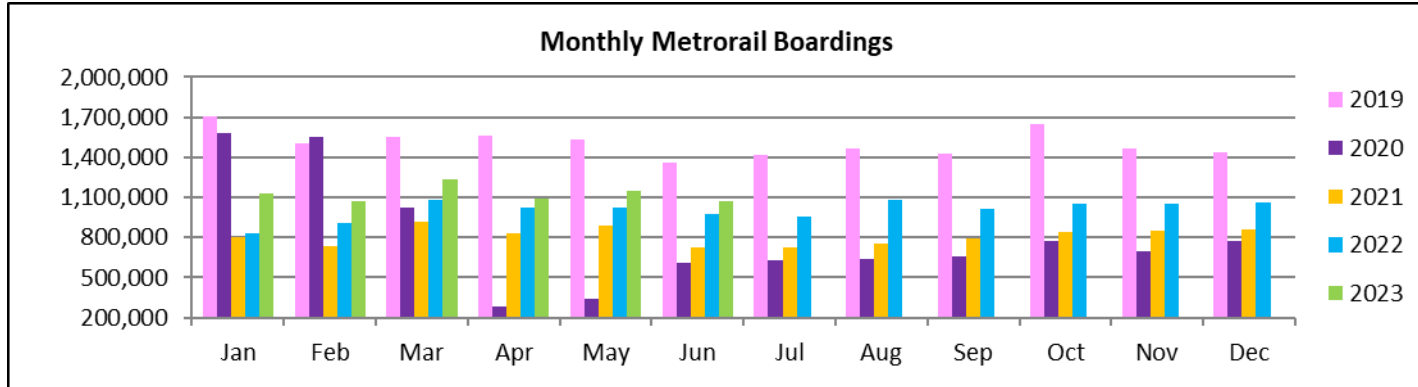
METRORAIL TOTAL MONTHLY BOARDINGS BY STATION

Monthly Totals	Total Month	Total Month	Percent Change	Total Month	Percent Change	Total Month	Percent Change	Total Month	Percent Change
STATIONS	Jun-23	Jun-22	YOY	Feb-20	Current vs Feb-20	May-23	MOM	Jun-21	YO2Y
ALLAPATTAH	39,889	35,772	11.5%	46,868	-14.9%	42,878	-7.0%	25,357	57.3%
BRICKELL	117,435	104,297	12.6%	152,259	-22.9%	130,881	-10.3%	78,739	49.1%
BROWNSVILLE	15,469	16,088	-3.8%	21,285	-27.3%	17,852	-13.3%	13,525	14.4%
CIVIC CENTER	93,303	77,307	20.7%	128,921	-27.6%	93,348	0.0%	58,891	58.4%
COCONUT GROVE	34,065	31,356	8.6%	43,580	-21.8%	38,885	-12.4%	24,403	39.6%
CULMER	23,131	19,933	16.0%	33,497	-30.9%	27,213	-15.0%	17,214	34.4%
DADELAND NORTH	90,304	77,744	16.2%	132,894	-32.0%	98,873	-8.7%	54,383	66.1%
DADELAND SOUTH	105,439	90,182	16.9%	162,416	-35.1%	114,816	-8.2%	69,123	52.5%
DOUGLAS ROAD	28,089	58,302	-51.8%	82,141	-65.8%	10,869	158.4%	43,049	-34.8%
DR. MARTIN LUTHER KING, JR.	20,916	19,404	7.8%	27,980	-25.2%	22,047	-5.1%	15,694	33.3%
EARLINGTON HEIGHTS	32,490	29,152	11.5%	40,697	-20.2%	34,125	-4.8%	21,058	54.3%
GOVERNMENT CENTER	150,004	133,185	12.6%	243,414	-38.4%	164,258	-8.7%	98,531	52.2%
HIALEAH	19,991	23,522	-15.0%	29,516	-32.3%	24,848	-19.5%	17,908	11.6%
MIAMI INTERNATIONAL AIRPORT	35,697	30,285	17.9%	46,115	-22.6%	38,564	-7.4%	20,060	78.0%
NORTHSIDE	32,647	28,834	13.2%	36,127	-9.6%	34,856	-6.3%	21,543	51.5%
OKEECHOBEE	20,848	17,497	19.2%	26,026	-19.9%	22,287	-6.5%	14,996	39.0%
OVERTOWN / ARENA	39,753	31,309	27.0%	49,911	-20.4%	42,988	-7.5%	18,217	118.2%
PALMETTO	29,506	24,790	19.0%	33,944	-13.1%	31,812	-7.2%	17,942	64.5%
SANTA CLARA	16,224	14,268	13.7%	19,245	-15.7%	17,619	-7.9%	10,760	50.8%
SOUTH MIAMI	41,008	41,129	-0.3%	69,412	-40.9%	48,113	-14.8%	32,837	24.9%
TRI-RAIL	25,669	23,206	10.6%	29,120	-11.9%	28,845	-11.0%	17,988	42.7%
UNIVERSITY	29,586	25,681	15.2%	61,253	-51.7%	35,792	-17.3%	14,782	100.1%
VIZCAYA	25,398	22,234	14.2%	32,497	-21.8%	30,050	-15.5%	16,469	54.2%
TOTAL	1,066,861	975,477	9.4%	1,549,118	-31.1%	1,151,819	-7.4%	723,469	47.5%

METRORAIL CUMULATIVE PERCENTAGE RIDERSHIP SHARE



TOTAL MONTHLY AND AVERAGE WEEKDAY RIDERSHIP YEAR OVER YEAR COMPARISON CHARTS – METRORAIL

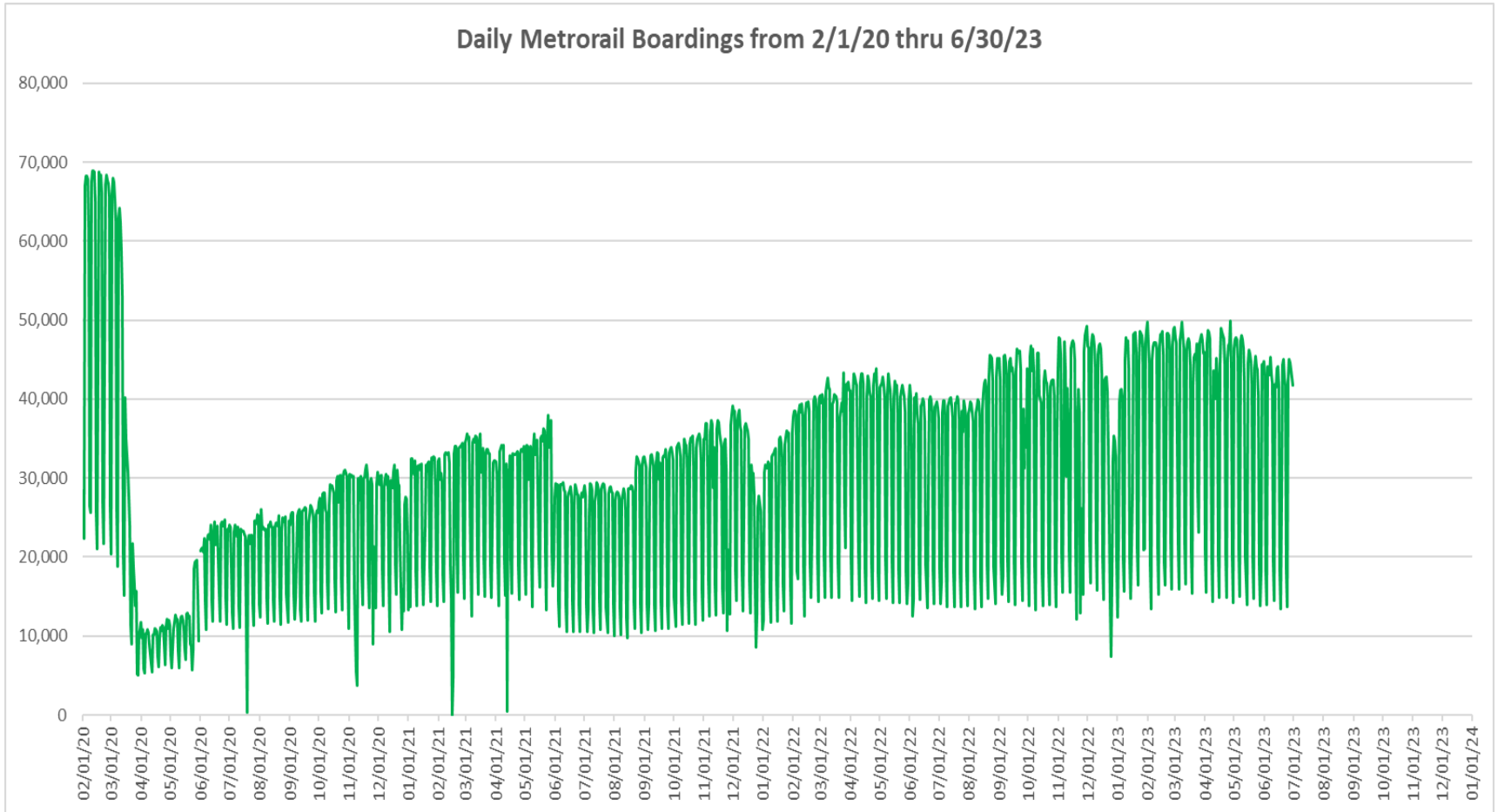


**“TOP 5 / BOTTOM 5” RAIL STATIONS AVERAGE WEEKDAY RIDERSHIP PERFORMANCE
YEAR OVER YEAR COMPARISONS**

Station	Jun-23	Jun-22	Absolute Delta (1)	Percent Delta
GOVERNMENT CENTER	6,092	5,358	735	13.7%
CIVIC CENTER	4,122	3,399	723	21.3%
DADELAND SOUTH	4,265	3,626	639	17.6%
BRICKELL	4,688	4,085	603	14.8%
DADELAND NORTH	3,771	3,200	571	17.8%
DOUGLAS ROAD	1,238	2,333	-1,096	-47.0%
HIALEAH	789	924	-135	-14.7%
BROWNSVILLE	587	617	-30	-4.9%
SOUTH MIAMI	1,647	1,629	18	1.1%
Dr. MARTIN LUTHER KING, JR.	811	753	59	7.8%

- (1) Averages rounded to the nearest boarding; construction at Douglas Road in 2023.
- (2) As a result of the SARS-CoV-2 pandemic, rides were fare-free beginning March 22, 2020; nearly all rail stations continued reporting YOY gains in June 2023, as June 2022 still showed clear reduction effects on ridership from the SARS-CoV-2 pandemic. Fares were reinstated June 1, 2021, and ridership data from the faregate system rather than the video camera counter system is utilized from that date going forward.

DAILY METRORAIL RIDERSHIP SINCE FEBRUARY 1, 2020



- (1) National Emergency was declared on 3/13/20 as a result of the SARS-CoV-2 pandemic.
- (2) There was no Metrobus, Metrorail and Metromover service on 5/31/20, as a safety precaution, and no service for any of the four modes on 9/28/22 as a result of Hurricane Ian..
- (3) The dip at the start of the second week of November 2020 is due to Hurricane Eta; these are *raw data* from the Unleash Live contractor AI video system.
- (4) The dip on 4/13/21 is due to a loss of connectivity at all stations, affecting a few stations over the next two days as well.
- (5) The reduction seen beginning 6/1/21 is partly due to the resumption of fares and partly the result of resuming reporting Cubic faregate data rather than video camera counts.
- (6) Periodic (weekly) variations are prominent, since weekday ridership is almost always significantly higher than weekend or holiday ridership.

METRORAIL PARKING PATRONAGE SUMMARY June 2023

PARK-RIDE LOT	ACTUAL CAPACITY (1)	ACTUAL OCCUPANCY (2)	PERCENT OCCUPANCY
DADELAND SOUTH	1,260	817	65%
DADELAND NORTH	1,963	814	41%
SOUTH MIAMI	1,081	211	19%
UNIVERSITY	260	173	67%
DOUGLAS ROAD	222	101	46%
COCONUT GROVE	100	58	58%
VIZCAYA	120	44	37%
CULMER	40	16	39%
SANTA CLARA	61	43	70%
ALLAPATTAH	74	8	11%
EARLINGTON HEIGHTS	361	134	37%
BROWNSVILLE	100	72	72%
DR. MARTIN LUTHER KING JR. (MDT) (*)	62	0	0%
DR. MARTIN LUTHER KING JR. (GARAGE) (*)	631	0	0%
NORTHSIDE	100	73	73%
HIALEAH	338	46	14%
OKEECHOBEE	1,398	138	10%
PALMETTO	700	143	20%
TOTAL	8,871	2,891	33%

- (1) Number of spaces could vary each week; shown are available spaces during final week of month, as submitted by DTPW Safety & Security office.
(2) All sampled occupancy data provided by DTPW Safety & Security office; calculations are revisions to those submitted by that entity.
(3) Daily averages rounded to nearest unit, with fewer counts at some stations due to shortage of DTPW Safety & Security office staff; calculations are based on sampled counted days only per raw data submitted, with resulting average daily occupancy shown.
(*) Closed throughout the month, per the DTPW Safety & Security office.

Metromover



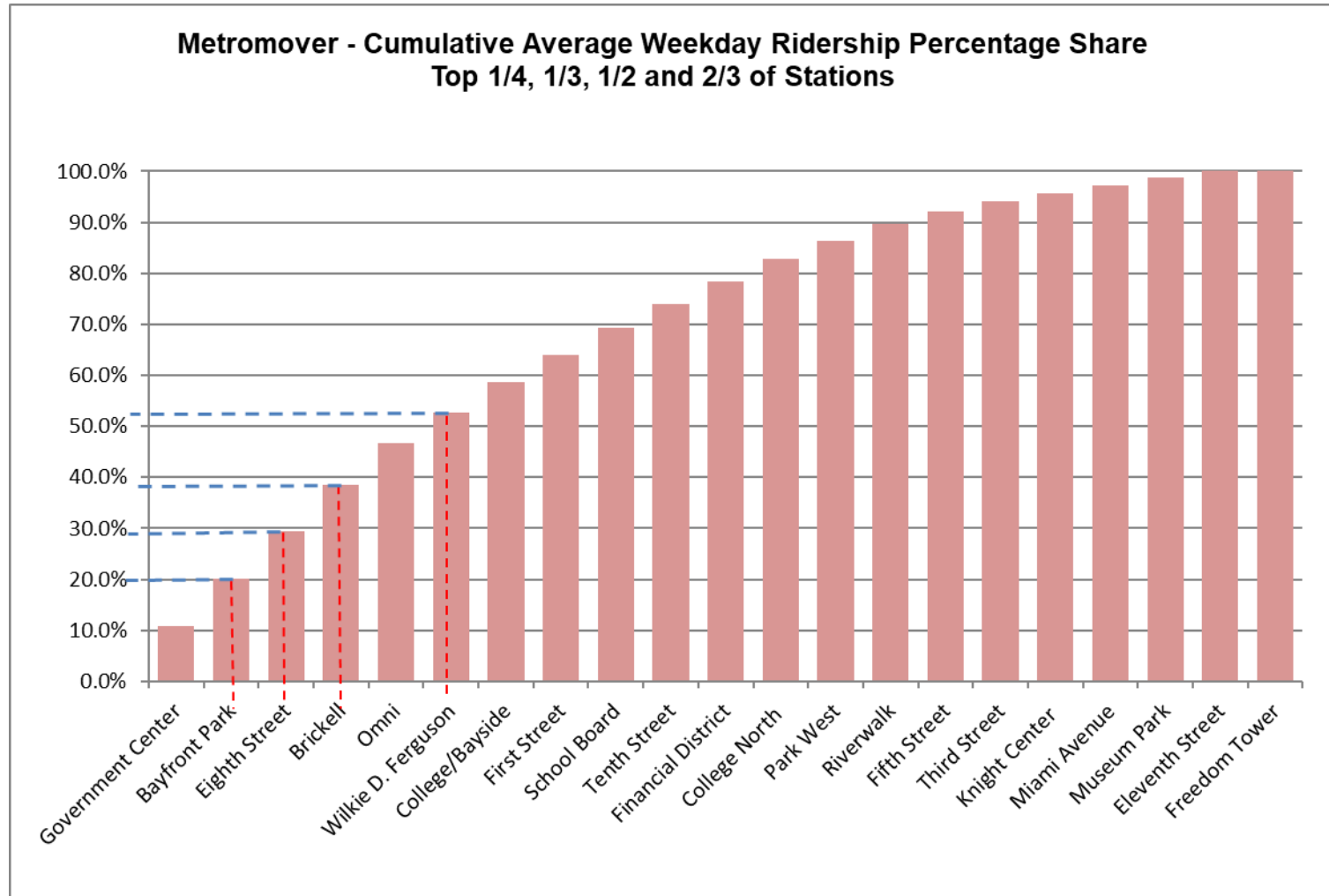
June 2023

METROMOVER MONTHLY AND AVERAGE DAILY BOARDINGS BY STATION

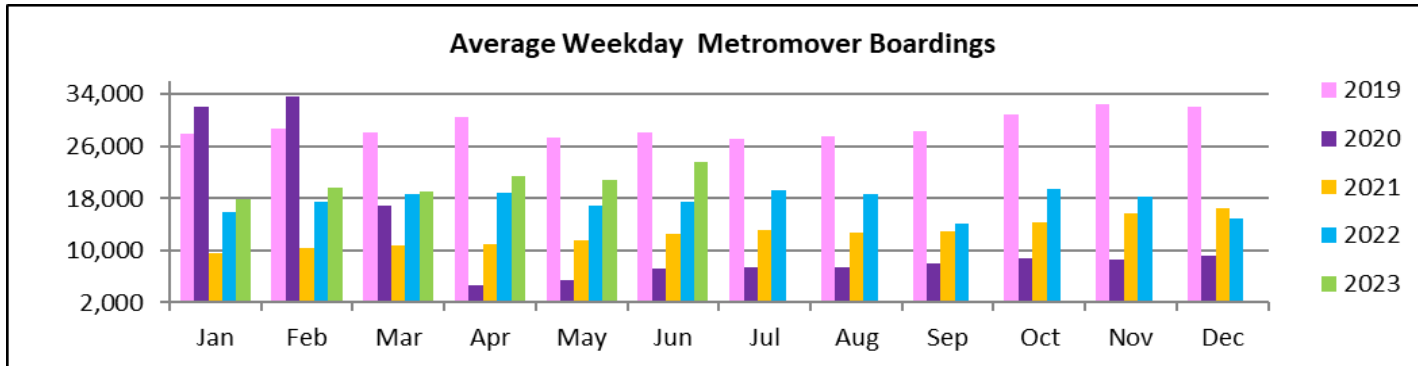
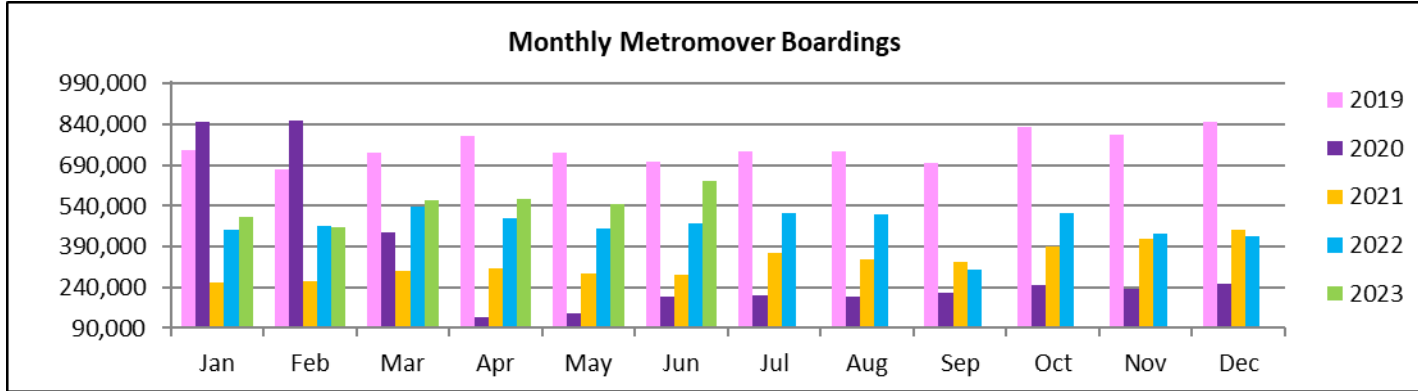
	Average Weekday	Average Weekday	Percent Change	Average Saturday	Average Saturday	Percent Change	Average Sunday	Average Sunday	Percent Change	Total Monthly	Total Monthly	Percent Change
STATIONS	Jun-23	Jun-22	23 vs 22	Jun-23	Jun-22	23 vs 22	Jun-23	Jun-22	23 vs 22	Jun-23	Jun-22	23 vs 22
School Board	1,258	745	68.8%	885	524	68.8%	795	497	59.9%	34,108	20,394	67.2%
Omni	1,942	1,433	35.5%	1,384	1,078	28.4%	1,277	987	29.4%	52,936	39,670	33.4%
Museum Park	371	312	18.9%	582	364	60.1%	513	328	56.3%	12,743	9,692	31.5%
Eleventh Street	276	245	12.5%	232	176	32.1%	211	140	50.9%	7,769	6,644	16.9%
Park West	877	386	126.8%	717	305	135.6%	696	241	189.1%	24,699	9,892	149.7%
Freedom Tower (1)												
Government Center	2,571	2,293	12.1%	1,645	1,500	9.7%	1,523	1,392	9.4%	68,664	61,588	11.5%
Miami Avenue	373	285	30.7%	224	220	1.9%	231	152	52.5%	9,949	7,702	29.2%
Third Street	463	263	75.8%	305	190	60.2%	351	177	98.9%	12,699	7,249	75.2%
Knight Center	394	478	-17.6%		318			258		787	12,673	-93.8%
Bayfront Park	2,205	1,789	23.2%	1,534	1,182	29.8%	1,409	1,097	28.4%	59,532	48,349	23.1%
First Street	1,282	903	42.0%	1,042	734	41.9%	967	667	44.9%	35,999	25,423	41.6%
College/Bayside	1,371	1,110	23.5%	1,050	760	38.2%	1,009	780	29.4%	38,171	30,621	24.7%
College North	1,021	646	58.1%	468	394	18.7%	529	313	69.1%	26,260	16,922	55.2%
Wilkie D. Ferguson	1,451	964	50.5%	898	636	41.3%	779	584	33.4%	38,218	25,877	47.7%
Riverwalk	792	360	119.9%	555	252	120.3%	473	186	154.3%	21,239	9,576	121.8%
Fifth Street	535	298	79.6%	343	237	44.8%	302	182	65.9%	14,157	8,199	72.7%
Eighth Street	2,173	1,638	32.7%	1,810	1,180	53.3%	1,562	1,238	26.2%	60,623	45,503	33.2%
Tenth Street	1,074	655	64.0%	729	558	30.6%	698	427	63.4%	29,051	18,283	58.9%
Brickell	2,143	1,844	16.3%	1,377	1,418	-2.9%	1,316	1,341	-1.8%	57,310	51,429	11.4%
Financial District	1,074	843	27.4%	538	409	31.6%	555	380	45.9%	27,509	21,600	27.4%
TOTAL	23,645	17,492	35.2%	16,316	12,433	31.2%	15,195	11,365	33.7%	632,423	477,286	32.5%

(1) Freedom Tower Station was closed for construction in Jun-23.

METROMOVER CUMULATIVE PERCENTAGE RIDERSHIP SHARE



TOTAL MONTHLY AND AVERAGE WEEKDAY RIDERSHIP YEAR OVER YEAR COMPARISON CHARTS – METROMOVER

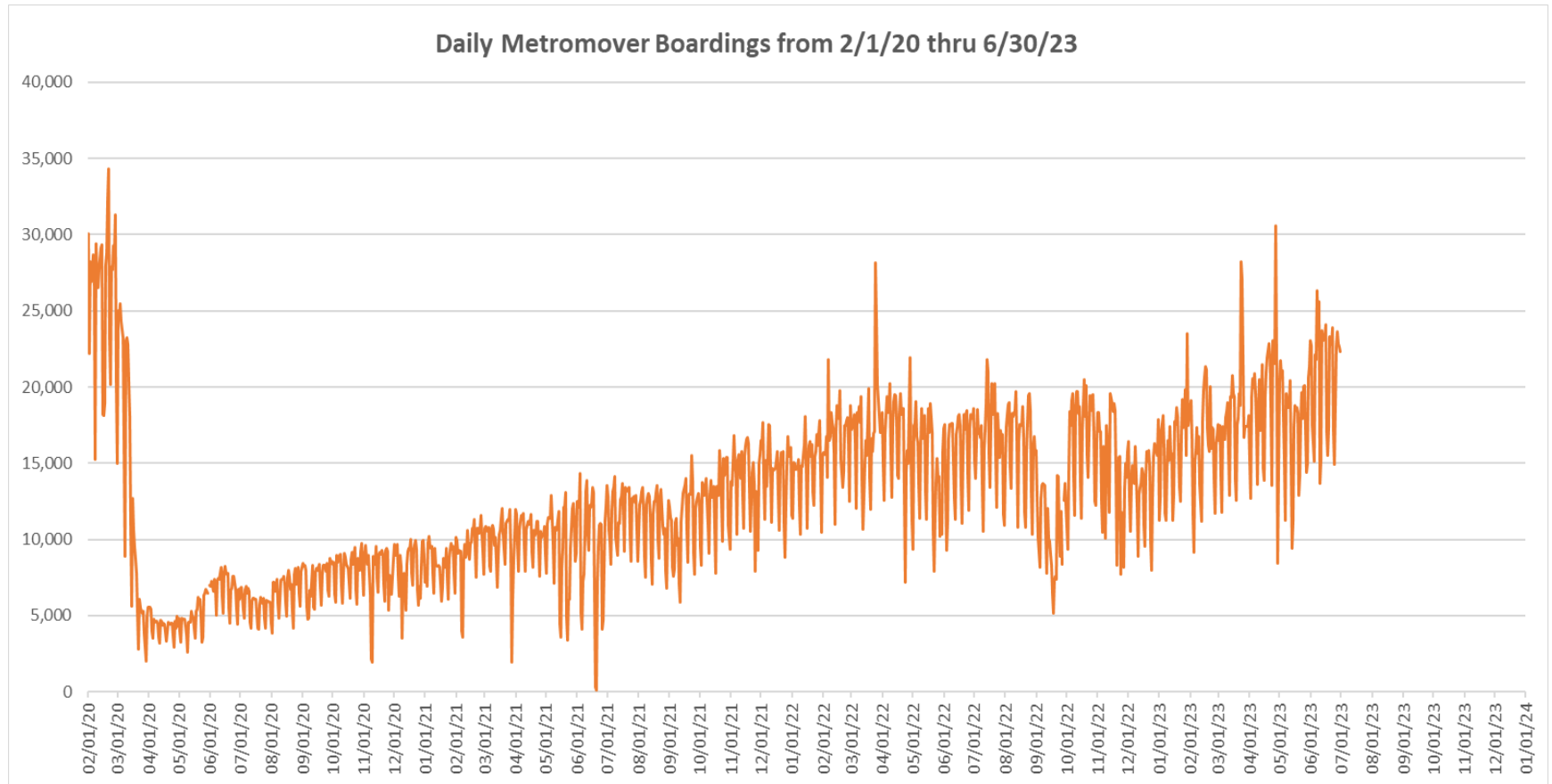


**“TOP 5 / BOTTOM 5” MOVER STATIONS AVERAGE WEEKDAY RIDERSHIP PERFORMANCE
YEAR OVER YEAR COMPARISONS**

Station	Jun-23	Jun-22	Absolute Delta (1)	Percent Delta
Eighth Street	2,173	1,638	535	32.7%
School Board	1,258	745	513	68.8%
Omni	1,942	1,433	509	35.5%
Park West	877	386	490	126.8%
Wilkie D. Ferguson	1,451	964	487	50.5%
Knight Center	394	478	-84	-17.6%
Eleventh Street	276	245	31	12.5%
Museum Park	371	312	59	18.9%
Miami Avenue	373	285	88	30.7%
Third Street	463	263	199	75.8%

(1) Averages rounded to the nearest boarding.

DAILY METROMOVER RIDERSHIP SINCE FEBRUARY 1, 2020



- (1) National Emergency was declared on 3/13/20 as a result of the SARS-CoV-2 pandemic.
- (2) There was no Metrobus, Metrorail and Metromover service on 5/31/20, as a safety precaution, and no service for any of the four modes on 9/28/22 as a result of Hurricane Ian..
- (3) The dip at the start of the second week of November 2020 is due to Hurricane Eta; these are *raw data* from the UTA contractor APC system. Other more recent dips are due to various station closures (mostly on weekends) for system maintenance purposes.
- (4) Periodic (weekly) variations are prominent, since weekday ridership is almost always significantly higher than weekend or holiday ridership.

Special Transportation Services

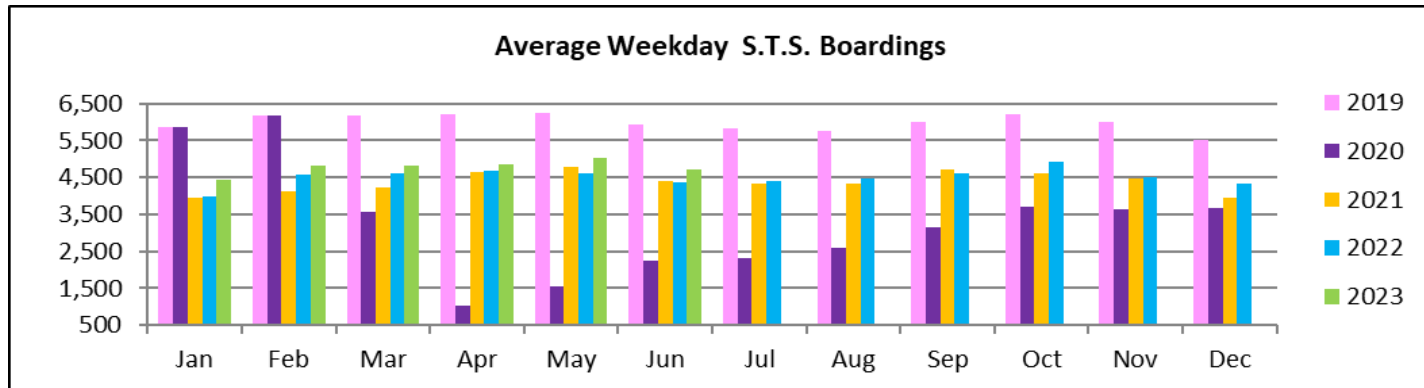
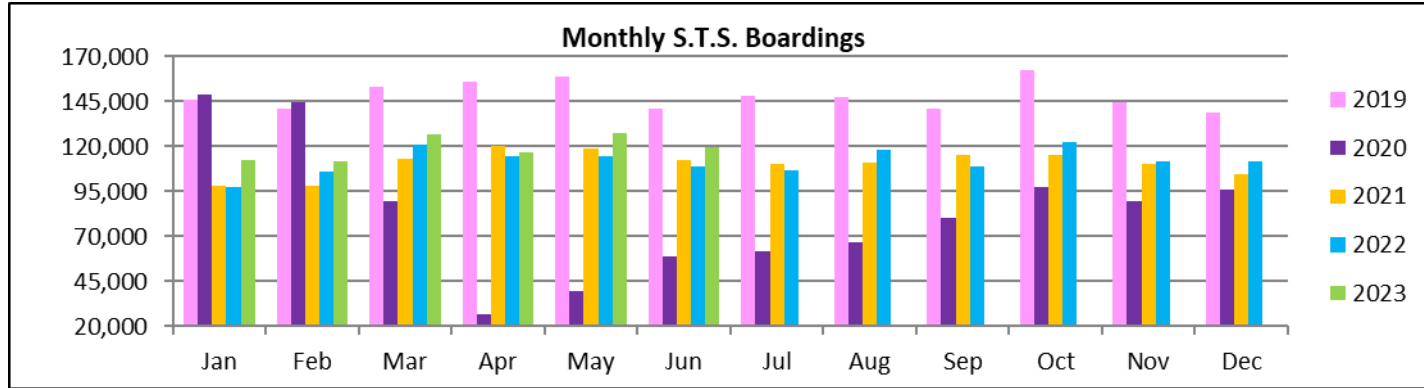


STS MONTHLY AND AVERAGE DAILY BOARDINGS
June 2023

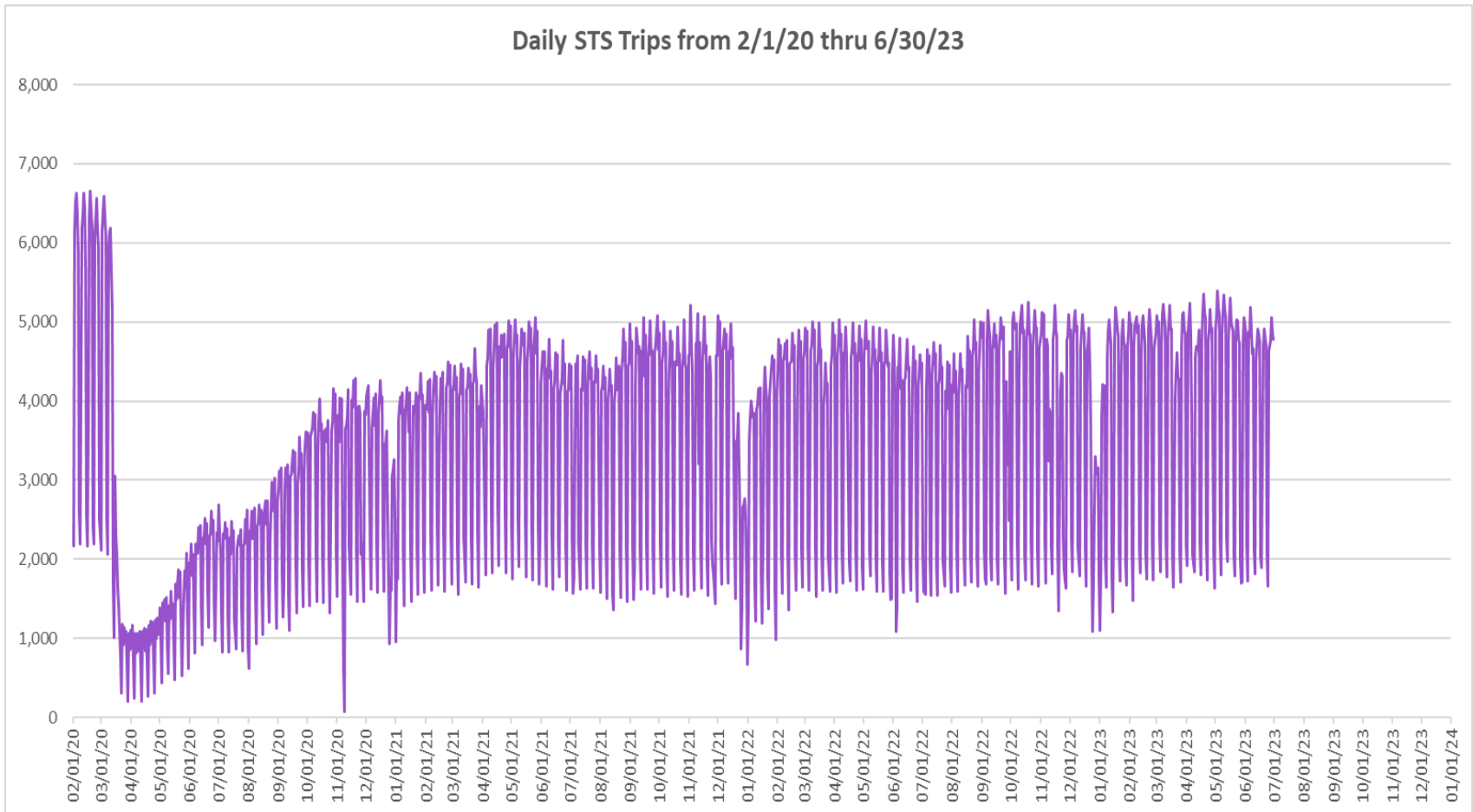
Measure	timeline	Ambulatory	Wheelchair	Total Clients (*)
Average Weekday	Jun-23	3,927	803	4,730
Average Saturday	Jun-23	1,724	373	2,097
Average Sunday	Jun-23	1,452	320	1,771
Total Monthly	Jun-23	99,091	20,436	119,527
Average Weekday	Jun-22	3,605	766	4,371
Average Saturday	Jun-22	1,405	304	1,709
Average Sunday	Jun-22	1,243	270	1,513
Total Monthly	Jun-22	89,913	19,141	109,054
Average Weekday	Jun-21	3,620	782	4,402
Average Saturday	Jun-21	1,821	404	2,225
Average Sunday	Jun-21	1,416	250	1,666
Total Monthly	Jun-21	92,576	19,821	112,397
% Change Current vs. June 2022 Weekday		8.9%	4.9%	8.2%
% Change Current vs. June 2022 Saturday		22.7%	22.7%	22.7%
% Change Current vs. June 2022 Sunday		16.8%	18.5%	17.1%
% Change Current vs. June 2022 Month Total		10.2%	6.8%	9.6%
% Change Current vs. June 2021 Weekday		8.5%	2.7%	7.5%
% Change Current vs. June 2021 Saturday		-5.3%	-7.7%	-5.7%
% Change Current vs. June 2021 Sunday		2.5%	27.9%	6.3%
% Change Current vs. June 2021 Month Total		7.0%	3.1%	6.3%

(*) Trip count data provided by STS contractor.

TOTAL MONTHLY AND AVERAGE WEEKDAY RIDERSHIP YEAR OVER YEAR COMPARISON CHARTS – SPECIAL TRANSPORTATION SERVICES (S.T.S.)

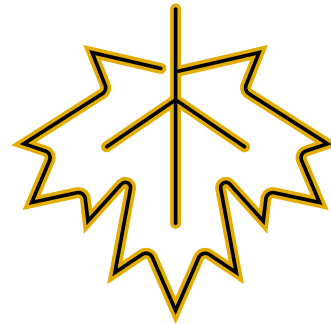
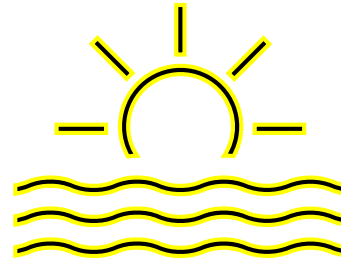
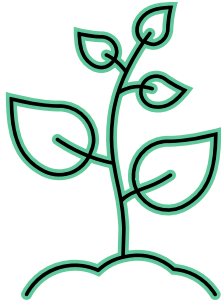


DAILY STS RIDERSHIP SINCE FEBRUARY 1, 2020

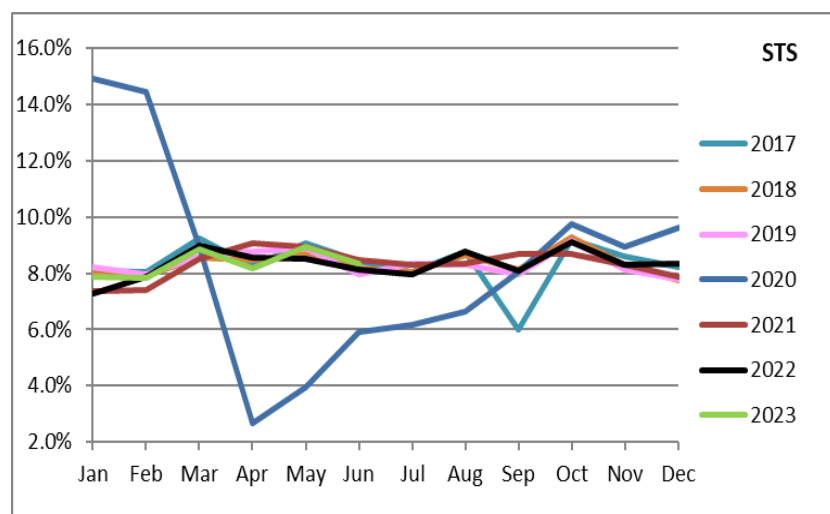
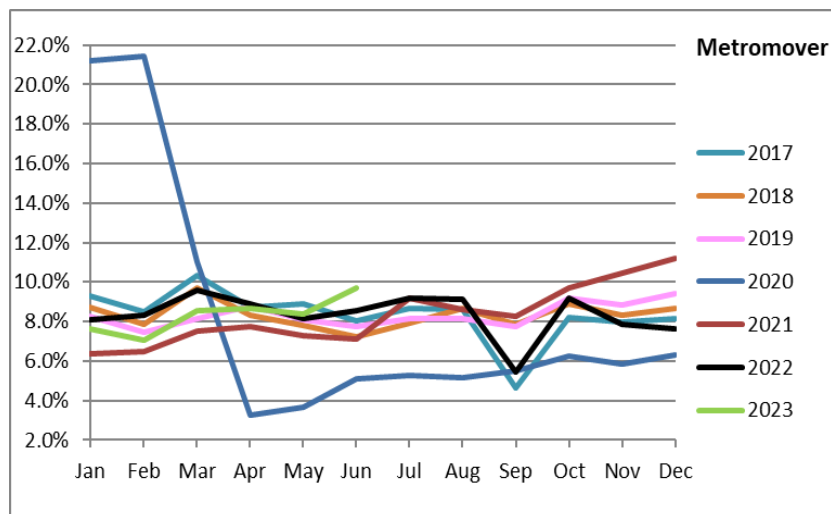
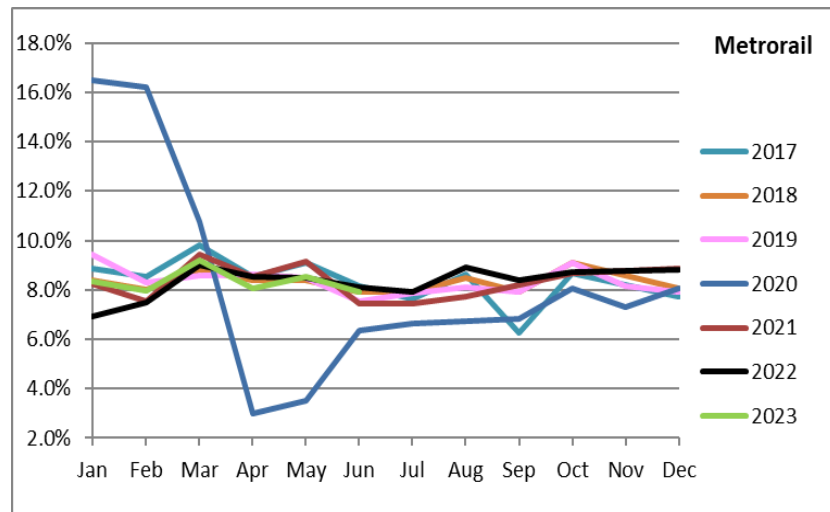
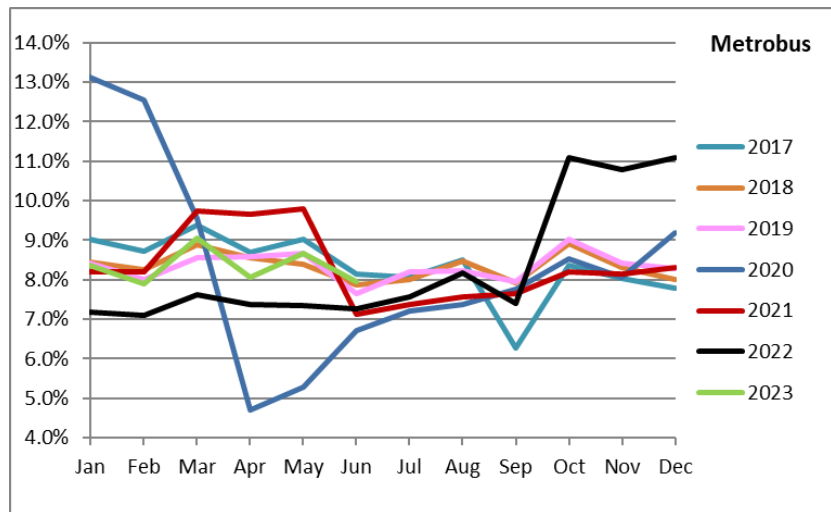


- (1) National Emergency was declared on 3/13/20 as a result of the SARS-CoV-2 pandemic.
- (2) There was no service (for any of the four modes) on 9/28/22 as a result of Hurricane Ian.
- (3) The dip at the start of the second week of November 2020 is due to Hurricane Eta.
- (4) Periodic (weekly) variations are prominent, since weekday ridership is almost always significantly higher than weekend or holiday ridership.

Ridership Seasonality



RIDERSHIP SEASONALITY – PERCENT RIDERSHIP SHARE BY MONTH AND CALENDAR YEAR FOR EACH MODE



Note: the prominent dips seen in the fall of 2017 and beginning in the spring of 2020 are due to Hurricane Irma and the SARS-CoV-2 pandemic, respectively. Reductions in Bus and Rail ridership share seen beginning in June 2021 are due to reinstatement of fares as well changes in reporting tools and datasets, as discussed earlier in this report. The prominent peaks seen beginning October 2022 are due from a changeover from farebox counts to ridership obtained from new automatic passenger counter (APC) technology on Metrobus.