



TRANSPORTATION AND PUBLIC WORKS

RIDERSHIP TECHNICAL REPORT

Division of Performance and Materials Management



August 2023

Table of Contents

<i>Table of Contents</i>	2-3
All Modes Overview	4
Total Monthly Weekday, Saturday and Sunday Monthly Boardings By Mode	5
Average Weekday, Saturday and Sunday Boardings by Mode	6
Metrobus Total Monthly Ridership Comparisons by Fiscal Year	7
Metrorail Total Monthly Ridership Comparisons by Fiscal Year	8
Metromover Total Monthly Ridership Comparisons by Fiscal Year	9
STS Total Monthly Ridership Comparisons by Fiscal Year	10
All-Modes Combined Total Monthly Ridership Comparisons By Fiscal Year	11
All Modes Combined Total Monthly and Average Weekday Ridership – Year over Year Comparison Charts	12
Average Weekday Ridership – Modal Splits	13
Daily Ridership for All Modes Combined since 2/1/20	14
Metrobus	15
Metrobus Average Weekday Boardings by Route	16-18
Metrobus Average Saturday Boardings by Route	19-20
Metrobus Average Sunday Boardings by Route	21-22
Metrobus Monthly Total Boardings by Route	23-25
Year-over-Year Bus Ridership by Route Service Type	26-27
Bus Routes as Ranked by Percentage of Average Weekday Ridership	28
Metrobus Cumulative Percentage Average Weekday Ridership Share by Route (Top 75%)	29
Total Monthly and Average Weekday Bus Ridership – Year over Year Comparison Charts	30
Bus “Top 5 / Bottom 5” Routes Average Weekday Ridership Performance	31
Daily Metrobus Ridership since 2/1/20	32
Metrobus Parking Patronage Summary	33

Table of Contents (continued)

Metrorail	34
Metrorail Average Weekday Boardings by Station	35
Metrorail Average Saturday Boardings by Station	36
Metrorail Average Sunday Boardings by Station	37
Metrorail Total Monthly Boardings by Station	38
Metrorail Cumulative Percentage Average Weekday Ridership Share	39
Total Monthly and Average Weekday Rail Ridership – Year over Year Comparison Charts	40
“Top 5 / Bottom 5” Stations Average Weekday Ridership Performance	41
Daily Metrorail Ridership since 2/1/20	42
Metrorail Parking Patronage Summary	43
 Metromover	 44
Monthly and Average Daily Mover Boardings by Station	45
Metromover Cumulative Percentage Average Weekday Ridership Share	46
Total Monthly and Average Weekday Mover Ridership – Year over Year Comparison Charts	47
“Top 5 / Bottom 5” Stations Average Weekday Ridership Performance	48
Daily Metromover Ridership since 2/1/20	49
 Special Transportation Services (STS)	 50
STS Monthly and Average Daily Boardings	51
Total Monthly and Average Weekday STS Ridership – Year over Year Comparison Charts	52
Daily STS Ridership since 2/1/20	53
 Ridership Seasonality	 54
Ridership Seasonality – Percent Ridership Share by Month and Calendar year for Each Mode	55

All Modes Overview



TOTAL MONTHLY WEEKDAY, SATURDAY AND SUNDAY BOARDINGS BY MODE
August 2023

TRAVEL MODE	MONTH'S TOTAL WEEKDAYS RIDERSHIP	MONTH'S TOTAL SATURDAYS RIDERSHIP	MONTH'S TOTAL SUNDAYS RIDERSHIP	TOTAL MONTHLY RIDERSHIP	% CHANGE vs Aug 2022 TOTAL MONTH RIDERSHIP
METROBUS (1), (2)	3,997,978	435,550	322,535	4,756,063	38.2%
METRORAIL (3)	1,040,586	76,657	56,895	1,174,138	9.1%
METROMOVER (4)	528,137	68,279	60,851	657,267	29.3%
STS PARATRANSIT (5)	109,818	8,578	7,114	125,510	6.4%
TOTAL	5,676,519	589,064	447,395	6,712,978	30.5%

- (1) Metrobus fares resumed on June 1, 2021, following a 14-month period of fare-free rides as a result of the SARS-CoV-2 pandemic. The NextFare System farebox data replaced the bus automatic passenger counter data as ridership data of record starting on that date.
- (2) Bus ridership reporting through automatic passenger counters coupled with a new enhanced sensor system resumed on October 1, 2022.
- (3) Metrorail fares resumed on June 1, 2021, following a 14-month period of fare-free rides as a result of the SARS-CoV-2 pandemic. The NextFare System faregate data replaced the video data as ridership data of record starting on that date.
- (4) Beginning March 13, 2020 (day of National Emergency Declaration due to SARS-CoV-2 pandemic), only raw data from Metromover automatic passenger counters is reported; no estimates are performed after March 13, 2020.
- (5) Paratransit ridership data as reported by the contractor.

AVERAGE WEEKDAY, SATURDAY AND SUNDAY BOARDINGS BY MODE
August 2023

Travel Mode	Average Weekday	Average Saturday	Average Sunday	% Change Aug 2022 Weekday	% Change Aug 2022 Saturday	% Change Aug 2022 Sunday
METROBUS	173,885	108,894	80,634	37.3%	42.2%	43.2%
METRORAIL	45,342	19,352	14,369	10.1%	6.1%	2.7%
METROMOVER	22,962	17,070	15,213	22.9%	12.9%	22.0%
STS PARATRANSIT	4,775	2,145	1,779	6.5%	4.7%	7.5%
Totals (1)	246,965	147,459	111,994	29.3%	31.7%	32.7%

(*) Average ridership is calculated and published only for those days and stations with nontrivial amounts of reported data.

METROBUS TOTAL MONTHLY RIDERSHIP COMPARISONS BY FISCAL YEAR

Bus Month	FY 19	FY 20	Variance 19 to 20	FY 21	FY 22	FY 23	Variance 22 to 23	Variance 21 to 22	Variance 19 to 23	Variance 19 to 22
Oct	4,554,886	4,507,012	-1.1%	2,805,139	3,081,157	4,679,725	51.9%	9.8%	2.7%	-32.4%
Nov	4,245,535	4,197,225	-1.1%	2,651,290	3,056,726	4,549,666	48.8%	15.3%	7.2%	-28.0%
Dec	4,081,581	4,126,990	1.1%	3,022,530	3,123,883	4,677,460	49.7%	3.4%	14.6%	-23.5%
Jan	4,195,911	4,316,998	2.9%	3,082,746	3,029,055	4,785,128	58.0%	-1.7%	14.0%	-27.8%
Feb	3,994,019	4,123,083	3.2%	3,076,966	2,995,789	4,526,317	51.1%	-2.6%	13.3%	-25.0%
Mar	4,266,768	3,136,162	-26.5%	3,660,639	3,218,562	5,183,872	61.1%	-12.1%	21.5%	-24.6%
Apr	4,291,135	1,544,316	-64.0%	3,625,048	3,105,797	4,618,302	48.7%	-14.3%	7.6%	-27.6%
May	4,330,922	1,734,609	-59.9%	3,683,343	3,097,574	4,953,197	59.9%	-15.9%	14.4%	-28.5%
Jun	3,823,863	2,210,725	-42.2%	2,672,570	3,064,059	4,545,050	48.3%	14.6%	18.9%	-19.9%
Jul	4,094,906	2,366,749	-42.2%	2,769,907	3,189,994	4,484,458	40.6%	15.2%	9.5%	-22.1%
Aug	4,109,613	2,422,014	-41.1%	2,843,552	3,442,006	4,756,063	38.2%	21.0%	15.7%	-16.2%
Sep	3,971,220	2,546,923	-35.9%	2,877,110	3,123,572			8.6%		-21.3%
FY Total	49,960,359	37,232,806	-25.5%	36,770,840	37,528,174			2.1%		-24.9%

METRORAIL TOTAL MONTHLY RIDERSHIP COMPARISONS BY FISCAL YEAR

Rail Month	FY 19	FY 20	Variance 19 to 20	FY 21	FY 22	FY 23	Variance 22 to 23	Variance 21 to 22	Variance 19 to 23	Variance 19 to 22
Oct	1,757,225	1,643,166	-6.5%	769,525	844,383	1,053,191	24.7%	9.7%	-40.1%	-51.9%
Nov	1,656,929	1,469,448	-11.3%	699,492	850,881	1,055,066	24.0%	21.6%	-36.3%	-48.6%
Dec	1,553,804	1,433,928	-7.7%	769,194	860,436	1,063,096	23.6%	11.9%	-31.6%	-44.6%
Jan	1,708,695	1,576,340	-7.7%	799,119	832,924	1,127,340	35.3%	4.2%	-34.0%	-51.3%
Feb	1,501,458	1,549,118	3.2%	730,792	905,162	1,072,791	18.5%	23.9%	-28.6%	-39.7%
Mar	1,554,851	1,027,319	-33.9%	917,097	1,084,978	1,239,336	14.2%	18.3%	-20.3%	-30.2%
Apr	1,559,446	287,803	-81.5%	827,414	1,027,139	1,087,816	5.9%	24.1%	-30.2%	-34.1%
May	1,531,597	337,696	-78.0%	887,111	1,023,322	1,151,819	12.6%	15.4%	-24.8%	-33.2%
Jun	1,359,966	608,758	-55.2%	723,469	975,477	1,066,861	9.4%	34.8%	-21.6%	-28.3%
Jul	1,419,158	632,964	-55.4%	722,159	953,331	1,022,937	7.3%	32.0%	-27.9%	-32.8%
Aug	1,463,646	641,275	-56.2%	749,578	1,076,490	1,174,138	9.1%	43.6%	-19.8%	-26.5%
Sep	1,427,726	654,244	-54.2%	795,749	1,012,331			27.2%		-29.1%
FY Total	18,494,501	11,862,059	-35.9%	9,390,699	11,446,854			21.9%		-38.1%

METROMOVER TOTAL MONTHLY RIDERSHIP COMPARISONS BY FISCAL YEAR

Mover Month	FY 19	FY 20	Variance 19 to 20	FY 21	FY 22	FY 23	Variance 22 to 23	Variance 21 to 22	Variance 19 to 23	Variance 19 to 22
Oct	790,533	831,234	5.1%	250,044	389,065	514,308	32.2%	55.6%	-34.9%	-50.8%
Nov	735,198	799,632	8.8%	232,422	418,929	439,150	4.8%	80.2%	-40.3%	-43.0%
Dec	767,239	849,832	10.8%	251,019	450,320	426,073	-5.4%	79.4%	-44.5%	-41.3%
Jan	746,728	847,773	13.5%	255,968	451,566	498,566	10.4%	76.4%	-33.2%	-39.5%
Feb	675,160	855,398	26.7%	260,332	465,968	459,264	-1.4%	79.0%	-32.0%	-31.0%
Mar	737,814	441,200	-40.2%	302,502	535,857	558,396	4.2%	77.1%	-24.3%	-27.4%
Apr	795,696	130,549	-83.6%	310,772	495,982	565,943	14.1%	59.6%	-28.9%	-37.7%
May	734,645	146,454	-80.1%	292,922	455,120	547,948	20.4%	55.4%	-25.4%	-38.0%
Jun	701,318	203,637	-71.0%	286,145	477,286	632,423	32.5%	66.8%	-9.8%	-31.9%
Jul	739,814	210,596	-71.5%	368,847	512,094	635,954	24.2%	38.8%	-14.0%	-30.8%
Aug	739,785	205,995	-72.2%	344,319	508,359	657,267	29.3%	47.6%	-11.2%	-31.3%
Sep	699,879	219,696	-68.6%	331,915	305,185			-8.1%		-56.4%
FY Total	8,863,809	5,741,996	-35.2%	3,487,207	5,465,731			56.7%		-38.3%

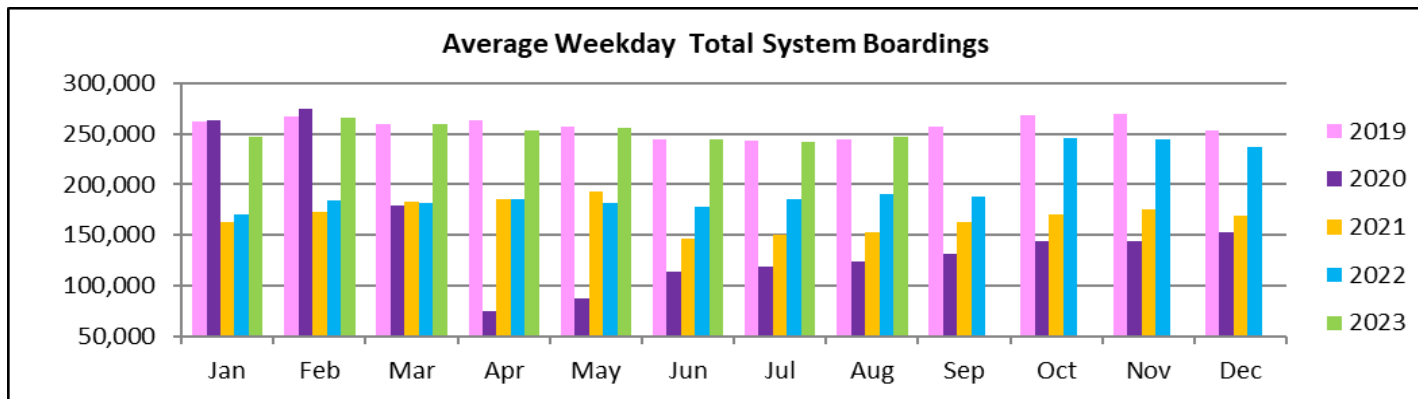
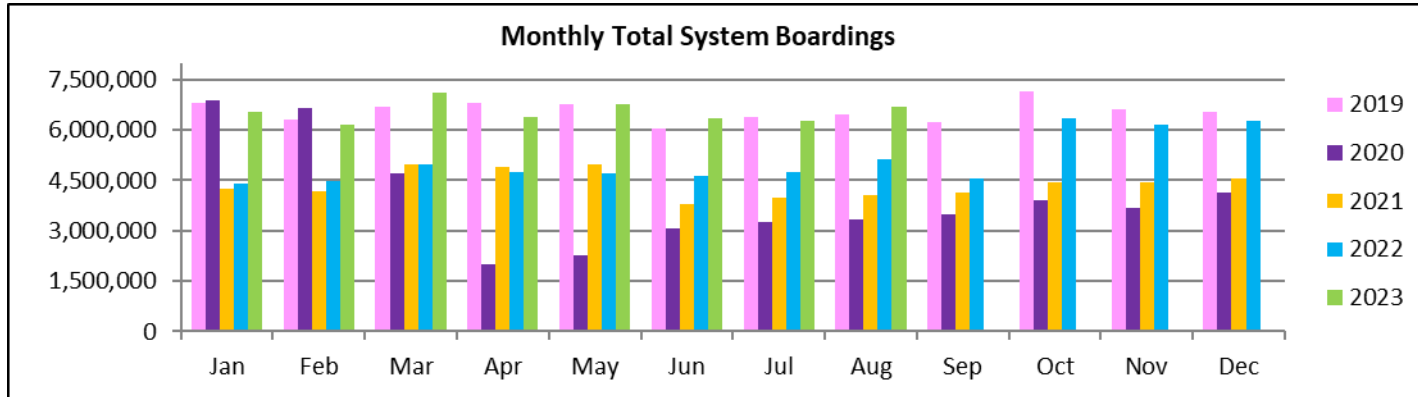
SPECIAL TRANSPORTATION SERVICES (STS) TOTAL MONTHLY RIDERSHIP COMPARISONS BY FISCAL YEAR

STS Month	FY 19	FY 20	Variance 19 to 20	FY 21	FY 22	FY 23	Variance 22 to 23	Variance 21 to 22	Variance 19 to 23	Variance 19 to 22
Oct	162,564	162,704	0.1%	97,388	115,122	122,189	6.1%	18.2%	-24.8%	-29.2%
Nov	145,653	144,366	-0.9%	89,387	110,289	111,578	1.2%	23.4%	-23.4%	-24.3%
Dec	136,110	138,642	1.9%	96,366	104,496	112,019	7.2%	8.4%	-17.7%	-23.2%
Jan	146,268	149,114	1.9%	97,928	97,541	112,632	15.5%	-0.4%	-23.0%	-33.3%
Feb	141,396	144,392	2.1%	98,285	105,706	111,748	5.7%	7.6%	-21.0%	-25.2%
Mar	153,191	89,634	-41.5%	112,930	120,718	126,819	5.1%	6.9%	-17.2%	-21.2%
Apr	155,808	26,877	-82.7%	120,122	114,912	116,882	1.7%	-4.3%	-25.0%	-26.2%
May	158,665	39,654	-75.0%	118,636	114,505	127,782	11.6%	-3.5%	-19.5%	-27.8%
Jun	141,320	59,093	-58.2%	112,397	109,054	119,527	9.6%	-3.0%	-15.4%	-22.8%
Jul	148,232	61,765	-58.3%	110,059	107,188	113,623	6.0%	-2.6%	-23.3%	-27.7%
Aug	147,331	66,563	-54.8%	110,766	117,941	125,510	6.4%	6.5%	-14.8%	-19.9%
Sep	141,387	80,346	-43.2%	115,406	108,788			-5.7%		-23.1%
FY Total	1,777,925	1,163,150	-34.6%	1,279,670	1,326,260			3.6%		-25.4%

ALL-MODES COMBINED TOTAL MONTHLY RIDERSHIP COMPARISONS BY FISCAL YEAR

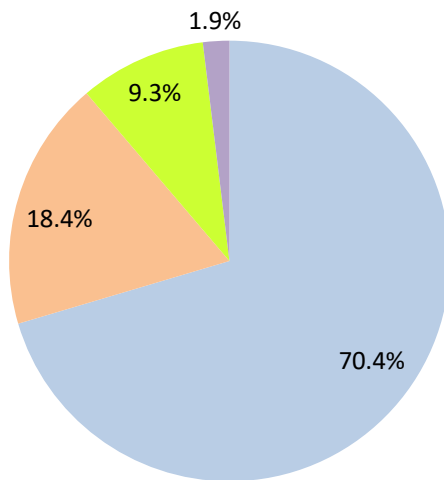
All Modes											
Month	FY 19	FY 20	FY 21	FY 22	FY 23	19 TO 20	20 TO 21	21 TO 22	22 TO 23	19 TO 23	19 TO 22
Oct	7,265,208	7,144,116	3,922,096	4,429,727	6,369,413	-1.7%	-45.1%	12.9%	43.8%	-12.3%	-39.0%
Nov	6,783,315	6,610,671	3,672,591	4,436,825	6,155,460	-2.5%	-44.4%	20.8%	38.7%	-9.3%	-34.6%
Dec	6,538,734	6,549,392	4,139,109	4,539,135	6,278,648	0.2%	-36.8%	9.7%	38.3%	-4.0%	-30.6%
Jan	6,797,602	6,890,225	4,235,761	4,411,086	6,523,666	1.4%	-38.5%	4.1%	47.9%	-4.0%	-35.1%
Feb	6,312,033	6,671,991	4,166,375	4,472,625	6,170,120	5.7%	-37.6%	7.4%	38.0%	-2.2%	-29.1%
Mar	6,712,624	4,694,315	4,993,168	4,960,115	7,108,423	-30.1%	6.4%	-0.7%	43.3%	5.9%	-26.1%
Apr	6,802,085	1,989,545	4,883,356	4,743,830	6,388,943	-70.8%	145.5%	-2.9%	34.7%	-6.1%	-30.3%
May	6,755,829	2,258,413	4,982,012	4,690,521	6,780,746	-66.6%	120.6%	-5.9%	44.6%	0.4%	-30.6%
Jun	6,026,467	3,082,213	3,794,581	4,625,876	6,363,861	-48.9%	23.1%	21.9%	37.6%	5.6%	-23.2%
Jul	6,402,110	3,272,074	3,970,972	4,762,607	6,256,972	-48.9%	21.4%	19.9%	31.4%	-2.3%	-25.6%
Aug	6,460,375	3,335,847	4,048,215	5,144,796	6,712,978	-48.4%	21.4%	27.1%	30.5%	3.9%	-20.4%
Sep	6,240,212	3,501,209	4,120,180	4,549,876		-43.9%	17.7%	10.4%			-27.1%
FY Total	79,096,594	56,000,011	50,928,416	55,767,019		-29.2%	-9.1%	9.5%			-29.5%

TOTAL MONTHLY AND AVERAGE WEEKDAY RIDERSHIP YEAR OVER YEAR COMPARISON CHARTS – ALL MODES COMBINED



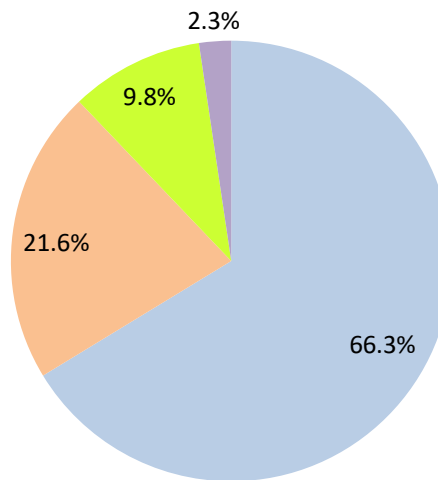
AVERAGE WEEKDAY RIDERSHIP - MODAL SPLITS

August 2023



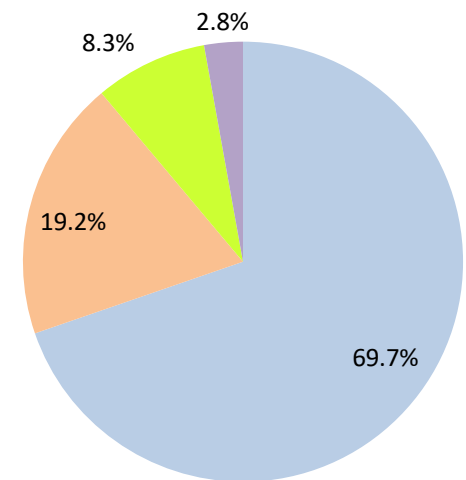
boardings

August 2022



boardings

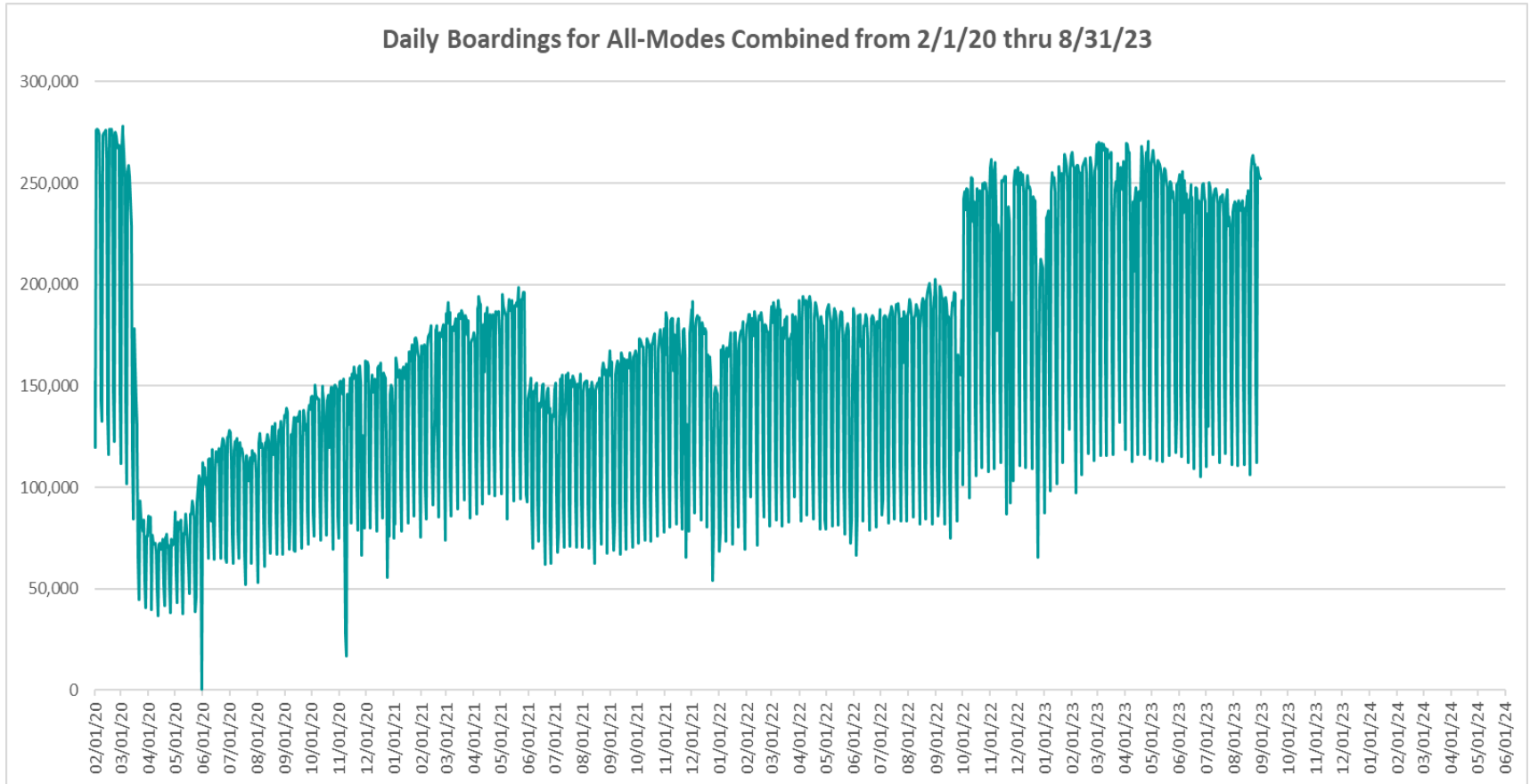
August 2021



boardings



DAILY RIDERSHIP FOR ALL MODES COMBINED SINCE FEBRUARY 1, 2020



- (1) National Emergency was declared on 3/13/20 as a result of the SARS-CoV-2 pandemic.
- (2) There was no Metrobus, Metrorail and Metromover service on 5/31/20, as a safety precaution, and no service for any of the four modes on 9/28/22 as a result of Hurricane Ian..
- (3) The dip at the start of the second week of November 2020 is due to Hurricane Eta.
- (4) The reduction seen beginning 6/1/21 is partly due to the resumption of fares for bus and rail, and partly the result of having resumed reporting Cubic farebox data rather than bus APC counts, as well as Cubic rail faregate counts instead of video camera counts on that date. The jump seen at the start of October 2022 is due to the return to APC bus ridership counts reporting on 10/1/22.
- (5) Periodic (weekly) variations are prominent, since weekday ridership is almost always significantly higher than weekend or holiday ridership.

Metrobus



August 2023

METROBUS AVERAGE WEEKDAY BOARDINGS BY ROUTE (†)

Route	Average Weekday	Average Weekday	Percent Change	Average Weekday	Percent Change	Average Weekday	Percent Change	Average Weekday	Percent Change
	Aug-23	Aug-22	YOY	Feb-20	Current vs Feb-20	Jul-23	MOM	Aug-21	YO2Y
weekdays									
1 (*)	213	195	9.7%	184	16.0%	188	13.3%	142	50.3%
2	2,777	1,869	48.6%	3,102	-10.5%	2,614	6.3%	1,781	56.0%
3	5,093	3,576	42.4%	5,137	-0.9%	5,428	-6.2%	3,844	32.5%
7	3,771	3,075	22.7%	3,501	7.7%	3,604	4.6%	2,122	77.7%
8	4,459	3,412	30.7%	3,909	14.1%	4,438	0.5%	3,409	30.8%
9	6,151	4,243	45.0%	5,528	11.3%	6,040	1.8%	4,607	33.5%
10	2,331	1,602	45.5%	2,482	-6.1%	2,321	0.4%	1,471	58.5%
11	9,049	6,393	41.5%	7,292	24.1%	8,427	7.4%	5,728	58.0%
12	2,711	1,941	39.7%	2,779	-2.4%	2,626	3.3%	1,617	67.6%
16	1,879	1,350	39.2%	1,862	0.9%	1,880	0.0%	1,126	66.9%
17	3,851	2,717	41.7%	3,878	-0.7%	3,585	7.4%	2,091	84.2%
19	1,561	980	59.3%	1,542	1.2%	1,551	0.6%	784	99.0%
21	1,936	1,166	66.1%	1,817	6.5%	1,849	4.7%	1,083	78.7%
22	4,235	2,863	47.9%	3,640	16.4%	3,966	6.8%	2,228	90.1%
24 - Coral Way Limited	2,164	1,634	32.5%	1,340	61.6%	2,142	1.0%	924	134.2%
26	1,726	1,410	22.4%	1,778	-2.9%	1,949	-11.4%	1,227	40.8%
27	6,703	4,959	35.2%	6,972	-3.9%	6,638	1.0%	4,581	46.3%
29 (*)	490	396	23.7%	534	-8.3%	485	1.0%	279	75.5%
31 - BUSWAY LOCAL		736		1,089		1,026		628	
32	2,524	1,786	41.3%	2,390	5.6%	2,457	2.7%	1,373	83.8%
33	1,779	1,348	32.0%	1,687	5.5%	1,717	3.6%	947	87.9%
34 TRANSITWAY EXPRESS	1,437	1,046	37.4%	2,008	-28.4%	1,378	4.3%	761	88.9%
35	2,723	1,722	58.1%	2,421	12.5%	2,468	10.3%	1,323	105.9%
36	2,592	1,958	32.4%	2,536	2.2%	2,553	1.5%	1,597	62.3%
37	3,348	2,506	33.6%	3,273	2.3%	3,322	0.8%	2,364	41.7%
38 TRANSITWAY MAX	4,474	4,166	7.4%	6,361	-29.7%	6,376	-29.8%	3,635	23.1%
39 TRANSITWAY EXPRESS	544			893	-39.1%	423	28.6%	140	288.8%
40	2,199	1,549	41.9%	1,772	24.1%	2,233	-1.5%	1,112	97.8%
42	943	649	45.3%	820	15.0%	949	-0.6%	584	61.5%
46 - LIBERTY CITY CONN. (*)	18	15	22.6%	41	-55.3%	14	27.1%	14	32.4%
51 - FLAGLER MAX	3,536	2,917	21.2%	3,109	13.7%	3,564	-0.8%	2,141	65.2%
52	1,287	921	39.7%	1,261	2.0%	1,228	4.8%	789	63.1%
54	3,006	2,180	37.9%	2,940	2.2%	2,963	1.4%	1,888	59.2%
55 MARLINS SHUTTLE									
56 (*)	348	309	12.5%	354	-1.7%	328	5.9%	226	54.1%
57	497	330	50.4%	433	14.6%	503	-1.4%	268	85.3%
62	2,183	1,225	78.2%	1,815	20.3%	1,894	15.3%	1,172	86.3%
71 (*)	683	579	18.1%	711	-3.8%	643	6.2%	373	83.1%
72 (*)	649	589	10.3%	781	-16.9%	626	3.8%	415	56.5%

(†) In this table and those which follow, "YOY" stands for "year-over-year", "MOM" for "month-over-month" and "YO2Y" for "year over two years", i.e., current month vs 12 months prior, one month prior, and 24 months prior, respectively.

(*) Contracted routes

METROBUS AVERAGE WEEKDAY BOARDINGS BY ROUTE

Route	Average Weekday	Average Weekday	Percent Change	Average Weekday	Percent Change	Average Weekday	Percent Change	Average Weekday	Percent Change
weekdays	Aug-23	Aug-22	YOY	Feb-20	Current vs Feb-20	Jul-23	MOM	Aug-21	YO2Y
73	2,826	2,352	20.1%	2,124	33.0%	2,760	2.4%	1,420	99.1%
75	1,325	846	56.6%	1,429	-7.2%	1,157	14.5%	788	68.2%
77	8,873	5,658	56.8%	7,129	24.5%	8,670	2.3%	5,296	67.5%
79 STREET MAX	457	287	59.5%	361	26.5%	475	-3.7%		
82 - WESTCHESTER CIRC. (*)	70	60	16.3%	62	13.4%	70	0.3%	30	130.4%
87	1,864	1,475	26.4%	1,499	24.3%	1,791	4.1%	973	91.7%
88	2,270	1,807	25.6%	2,076	9.3%	2,207	2.9%	1,902	19.4%
93 - BISCAYNE MAX	3,429	2,247	52.6%	3,334	2.8%	3,427	0.0%	1,711	100.4%
95 EXPRESS	1,178	829	42.1%	1,690	-30.3%	1,213	-2.9%	445	164.5%
99	1,724	1,227	40.4%	1,473	17.1%	1,704	1.2%	948	81.9%
101 - A (*)	181	204	-11.2%	177	2.2%	174	4.2%	121	49.8%
103 - C				463				203	
104	888	625	42.0%	837	6.1%	858	3.6%	535	66.2%
105 - E	1,351	1,052	28.4%	1,287	4.9%	1,333	1.4%	857	57.6%
107 - G	2,003	1,473	36.0%	1,713	16.9%	1,905	5.1%	1,110	80.3%
108 - H	471	345	36.3%	473	-0.3%	579	-18.7%	268	75.6%
110 - J	3,099	2,138	45.0%	2,508	23.6%	3,025	2.5%	1,747	77.4%
112 - L	8,245	6,336	30.1%	7,636	8.0%	8,375	-1.6%	6,330	30.3%
113 - M	922	538	71.6%	866	6.6%	928	-0.6%	393	134.8%
115 (*)	134	134	-0.2%	180	-25.7%	142	-5.5%	136	-1.6%
119 - S	9,587	6,929	38.3%	8,970	6.9%	9,395	2.0%	6,761	41.8%
120 - BEACH MAX	6,019	5,116	17.6%	6,667	-9.7%	6,160	-2.3%	3,777	59.4%
132 TRI-RAIL (DORAL)	42	5	678.2%	16	168.1%	41	3.0%	13	217.4%
135	1,472	898	63.8%	1,399	5.2%	1,383	6.4%	565	160.5%
136	147	106	38.1%	126	16.5%	146	0.5%	102	43.8%
137 - WEST DADE CONN.	2,093	1,542	35.7%	1,626	28.7%	2,008	4.2%	903	131.7%
150 - MIAMI BEACH AIRPORT FLYER	2,278	1,597	42.6%	1,867	22.0%	2,172	4.8%	960	137.1%
155 - BISCAYNE GARDENS CIRCULATOR (*)	48	36	32.4%	44	8.5%	48	0.0%	25	91.1%
175 - NW MIAMI-DADE EXPRESS				33					
183	3,335	2,281	46.2%	3,149	5.9%	3,213	3.8%	1,848	80.4%
195 EXPRESS - BROWARD BLVD				372					
196 EXPRESS - SHERIDAN ST				383					
200 - CUTLER BAY LOCAL	183	106	71.9%	158	16.1%	183	0.2%	74	148.1%
202 - LITTLE HAITI CONN. (*)	111	107	3.5%	140	-20.7%	99	11.5%	84	32.5%
204 KILLIAN KAT	594	473	25.6%	1,071	-44.5%	655	-9.2%		

METROBUS AVERAGE WEEKDAY BOARDINGS BY ROUTE

Route	Average Weekday	Average Weekday	Percent Change	Average Weekday	Percent Change	Average Weekday	Percent Change	Average Weekday	Percent Change
weekdays	Aug-23	Aug-22	YOY	Feb-20	Current vs Feb-20	Jul-23	MOM	Aug-21	YO2Y
207 (7st) - LITTLE HAVANA CIRC	1,652	1,139	45.1%	1,489	11.0%	1,672	-1.2%	725	127.9%
208 (8st) - LITTLE HAVANA CIRC	1,561	1,041	49.9%	1,308	19.4%	1,540	1.3%	775	101.3%
210 - SKYLAKE CIRC (*)	285	293	-2.7%	282	1.1%	359	-20.7%	261	9.3%
211 - OVERTOWN CIRC. (*)	83	86	-2.6%	58	43.7%	66	25.7%	34	146.5%
212 - SWEETWATER CIRC. (*)	25	23	9.6%	15	71.3%	23	11.8%	31	-18.4%
217 - BUNCHE PARK CIRC (*)	62	64	-3.6%	97	-36.3%	55	12.4%	40	54.5%
238 EAST/WEST CONN.	607	432	40.6%	449	35.1%	585	3.7%	252	141.1%
241 TUTTLE LIMITED	306	74	316.1%			290	5.4%		
246 - NIGHT OWL	56	52	9.0%	94	-39.9%	50	13.0%	10	491.8%
248 - PRINCETON CIRCULATOR (*)	147	110	33.3%	135	9.1%	105	39.4%	62	137.3%
252 - CORAL REEF MAX	973	650	49.7%	851	14.3%	923	5.4%	434	124.0%
254 - BROWNSVILLE CIRC. (*)	6	8	-21.5%	19	-66.9%	6	10.4%	7	-5.0%
267 - LUDLAM LIMITED (*)	153	144	6.1%	149	2.9%	171	-10.6%	100	53.2%
272 SUNSET KAT (*)	428	347	23.1%	550	-22.2%	393	8.9%	279	53.1%
277 - 7th AVENUE MAX	755	521	45.0%	683	10.5%	719	5.0%	294	156.9%
286 - NORTH POINTE CIRC. (*)	77	63	22.0%	97	-20.2%	61	27.9%	34	131.1%
287 - SAGA BAY MAX	317	187	69.2%	358	-11.4%	303	4.6%	165	92.7%
288 - KENDALL CRUISER	367	298	23.3%	762	-51.8%	418	-12.1%		
295 EXPRESS - BROWARD BLVD - CIVIC CENTER				233					
296 EXPRESS - SHERIDAN ST - CIVIC CENTER				215					
297-27th AVENUE ORANGE MAX	1,167	791	47.5%	1,356	-13.9%	1,099	6.2%	600	94.5%
301 DADE-MONROE EXPRESS (*)	1,030	771	33.6%	841	22.4%	1,004	2.6%	1,023	0.7%
302 CARD SOUND EXPRESS (*)	93	77	19.9%	86	7.4%	88	4.9%	81	15.0%
344 (*)	77	52	48.5%	96	-19.4%	68	13.8%	51	52.6%
500	72	13	451.3%	81	-10.6%	72	0.0%	23	212.5%
836 EXPRESS	253	147	72.0%			337	-25.0%	96	162.7%
837 EXPRESS	166					144	15.4%		
GREEN HILLS SHUTTLE (*)	7	4	75.0%	9	-22.2%	7	2.9%	5	29.6%
KINGS CREEK SHUTTLE (*)	11	20	-46.7%	13	-16.9%	9	20.0%	10	8.0%
SIERRA LAKES SHUTTLE (*)	23	18	26.8%	45	-50.0%	15	55.2%	17	34.3%
ROBERT SHARP SHUTTLE (*)	19	15	32.9%	10	104.2%	22	-12.8%	18	7.8%
AHEPA SHUTTLE (*)	15	17	-9.3%	21	-26.7%	14	10.5%	19	-18.9%
Total	173,885	126,601	37.3%	167,711	3.7%	173,312	0.3%	106,560	63.2%

(*) The following routes are entirely operated under contract: 1, 29, 46, 56, 71, 72, 82, 101-A, 115, 155, 202, 210, 211, 212, 217, 246, 248, 254, 267, 272, 286, 301, 302 and 344.

(1) Includes shuttles and those routes which were not run both years.

(2) Several express routes were suspended beginning at the end of March 2020, due to the SARS-CoV-2 pandemic, while other routes had alignment and schedule modifications made to them, in an ongoing effort to optimize service delivery.

METROBUS AVERAGE SATURDAY BOARDINGS BY ROUTE

Route	Average Saturday	Average Saturday	Percent Change	Average Saturday	Percent Change	Average Saturday	Percent Change	Average Saturday	Percent Change
Saturdays	Aug-23	Aug-22	YOY	Feb-20	Current vs Feb-20	Jul-23	MOM	Aug-21	YO2Y
1 (*)	158	186	-14.8%	215	-26.4%	152	4.4%	131	20.6%
2	1,706	1,059	61.1%	1,616	5.5%	1,564	9.0%	1,244	37.1%
3	5,910	3,872	52.6%	5,229	13.0%	6,374	-7.3%	3,785	56.2%
7	2,076	1,797	15.5%	1,887	10.0%	2,165	-4.1%	1,214	71.0%
8	2,583	1,974	30.9%	2,027	27.4%	2,498	3.4%	1,684	53.4%
9	3,885	2,685	44.7%	3,034	28.1%	3,748	3.7%	2,483	56.5%
10	2,095	1,497	39.9%	1,896	10.5%	2,105	-0.5%	1,370	52.9%
11	6,351	4,936	28.7%	5,182	22.5%	6,221	2.1%	4,012	58.3%
16	1,809	1,195	51.4%	1,566	15.5%	1,680	7.7%	1,116	62.0%
17	2,584	1,755	47.3%	2,363	9.3%	2,483	4.1%	1,527	69.2%
22	2,456	1,808	35.8%	2,084	17.8%	2,398	2.4%	1,346	82.4%
24 - Coral Way Limited	1,406	1,069	31.5%	1,165	20.7%	1,474	-4.6%	501	180.8%
26	917	543	68.9%	851	7.8%	988	-7.2%	438	109.5%
27	4,343	3,335	30.2%	4,034	7.7%	4,235	2.6%	2,654	63.6%
31 - BUSWAY LOCAL		656		896		910		473	
32	1,214	854	42.2%	1,029	18.0%	1,193	1.8%	681	78.3%
33	1,115	824	35.4%	951	17.3%	1,167	-4.4%	580	92.3%
35	1,545	1,019	51.7%	1,372	12.6%	1,501	2.9%	704	119.5%
36	1,627	930	74.9%	1,289	26.2%	1,617	0.6%	926	75.7%
37	2,092	1,618	29.3%	2,090	0.1%	2,171	-3.7%	1,434	45.9%
38 TRANSITWAY MAX	5,928	3,121	90.0%	4,715	25.7%	4,998	18.6%	3,068	93.3%
40	890	550	62.0%	655	36.0%	885	0.6%	460	93.6%
42	647	438	47.8%	552	17.2%	628	2.9%	388	66.6%
52	679	460	47.4%	686	-1.1%	738	-8.1%	373	81.8%
54	1,984	1,403	41.5%	1,727	14.9%	1,968	0.8%	1,132	75.2%
55 MARLINS SHUTTLE									
62	1,726	958	80.1%	1,343	28.5%	1,520	13.5%	830	107.9%
71 (*)	240	237	1.3%	252	-4.8%	254	-5.7%	149	61.4%
72 (*)	367	373	-1.6%	350	5.0%	390	-5.9%	341	7.7%
73	1,311	1,006	30.4%	860	52.4%	1,314	-0.2%	631	107.9%
75	496	319	55.5%	468	5.9%	479	3.4%	350	41.5%
77	5,477	3,382	61.9%	4,197	30.5%	5,485	-0.2%	3,186	71.9%
87	660	529	24.9%	402	64.1%	596	10.8%	335	97.2%
88	1,717	1,259	36.4%	1,620	5.9%	1,785	-3.8%	1,200	43.0%
99	1,085	659	64.8%	849	27.9%	1,062	2.1%	619	75.4%

METROBUS AVERAGE SATURDAY BOARDINGS BY ROUTE

Route	Average Saturday	Average Saturday	Percent Change	Average Saturday	Percent Change	Average Saturday	Percent Change	Average Saturday	Percent Change
Saturdays	Aug-23	Aug-22	YOY	Feb-20	Current vs Feb-20	Jul-23	MOM	Aug-21	YO2Y
101 - A (*)	81	74	9.9%	71	14.1%	43	87.8%	54	49.5%
103 - C				315				153	
104	486	338	43.7%	468	3.7%	497	-2.2%	205	136.7%
105 - E	777	588	32.1%	619	25.6%	725	7.3%	459	69.5%
107 - G	1,369	867	57.8%	1,066	28.4%	1,323	3.4%	823	66.3%
108 - H	423	311	36.1%	372	13.7%	418	1.4%	267	58.8%
110 - J	1,821	1,714	6.2%	1,952	-6.7%	2,323	-21.6%	1,315	38.5%
112 - L	6,796	5,144	32.1%	5,667	19.9%	7,112	-4.4%	4,158	63.4%
113 - M	584	351	66.6%	503	16.2%	608	-3.8%	304	92.3%
115 (*)	74	55	35.2%	82	-10.0%	97	-23.6%	93	-20.4%
119 - S	8,002	5,607	42.7%	6,861	16.6%	8,351	-4.2%	4,530	76.6%
120 - BEACH MAX	5,589	3,645	53.3%	4,744	17.8%	5,998	-6.8%	2,831	97.4%
135	524	437	19.8%	539	-2.8%	509	2.8%	200	162.2%
137 - WEST DADE CONN.	1,554	1,100	41.3%	1,027	51.3%	1,451	7.1%	684	127.3%
150 - MIAMI BEACH AIRPORT FLYER	2,287	1,586	44.2%	1,604	42.6%	2,043	12.0%	854	167.9%
183	2,010	1,366	47.1%	1,790	12.3%	2,101	-4.3%	1,147	75.3%
200 - CUTLER BAY LOCAL	165	88	88.3%	119	38.6%	171	-3.4%	47	251.6%
202 - LITTLE HAITI CONN. (*)	23	42	-44.3%	50	-53.7%	23	1.1%	56	-58.7%
207 (7st) - LITTLE HAVANA CIRC	882	730	20.8%	1,032	-14.6%	883	-0.2%	701	25.7%
208 (8st) - LITTLE HAVANA CIRC	1,058	845	25.2%	1,044	1.3%	1,043	1.4%	713	48.4%
210 - SKYLAKE CIRC (*)	80	116	-31.1%	165	-51.7%	158	-49.5%	119	-32.8%
241 TUTTLE LIMITED	193	40	387.3%			185	3.8%		
246 - NIGHT OWL	35	44	-20.6%	84	-58.8%	62	-44.0%	1	3375.0%
252 - CORAL REEF MAX	388	245	58.1%	302	28.4%	426	-9.1%	167	132.2%
286 - NORTH POINTE CIRC. (*)	34	50	-31.8%	41	-17.3%	39	-13.9%	29	15.4%
301 DADE-MONROE EXPRESS (*)	982	807	21.7%	801	22.6%	909	8.1%	970	1.2%
302 CARD SOUND EXPRESS (*)	90	74	21.4%	57	58.1%	103	-12.8%	47	91.4%
338 - WEEKEND EXPRESS	252	112	124.3%	237	6.4%	266	-5.4%	123	104.3%
500	83	16	415.6%	70	17.9%	128	-35.5%		
12/21 WEEKEND INTERL.	3,109	1,830	70.0%	2,528	23.0%	2,977	4.5%	1,673	85.9%
FEDERATION GARDENS SHUTTLE (*)	25	27	-6.9%	28	-13.1%	27	-6.9%	19	31.6%
Total	108,894	76,593	42.2%	93,742	16.2%	109,781	-0.8%	64,123	69.8%

METROBUS AVERAGE SUNDAY BOARDINGS BY ROUTE

Route	Average Sunday	Average Sunday	Percent Change	Average Sunday	Percent Change	Average Sunday	Percent Change	Average Sunday	Percent Change
Sundays	Aug-23	Aug-22	YOY	Feb-20	Current vs Feb-20	Jul-23	MOM	Aug-21	YO2Y
1 (*)	152	202	-24.8%	201	-24.4%	143	6.0%	130	17.1%
2	1,117	721	54.9%	1,335	-16.3%	1,108	0.8%	699	59.8%
3	4,845	3,074	57.6%	4,353	11.3%	4,696	3.2%	3,055	58.6%
7	1,595	1,266	25.9%	1,654	-3.6%	1,595	0.0%	1,012	57.6%
8	1,814	1,550	17.0%	1,746	3.9%	1,916	-5.3%	1,235	46.9%
9	2,852	1,904	49.8%	2,549	11.9%	2,870	-0.6%	1,922	48.3%
10	1,581	1,022	54.7%	1,441	9.7%	1,564	1.1%	1,103	43.3%
11	3,958	2,865	38.2%	3,917	1.1%	4,224	-6.3%	2,597	52.4%
16	940	719	30.8%	997	-5.6%	1,056	-11.0%	699	34.6%
17	1,742	1,346	29.4%	1,833	-5.0%	1,820	-4.3%	1,113	56.5%
22	1,768	1,215	45.5%	1,548	14.2%	1,864	-5.2%	1,011	74.8%
24 - Coral Way Limited	1,061	761	39.3%	905	17.2%	1,119	-5.2%	688	54.1%
26	761	656	16.0%	717	6.1%	834	-8.8%	471	61.5%
27	2,858	1,903	50.2%	2,918	-2.1%	3,037	-5.9%	1,704	67.7%
31 - BUSWAY LOCAL		398		715		831		365	
32	694	545	27.4%	772	-10.2%	699	-0.8%	378	83.6%
33	642	517	24.2%	607	5.8%	676	-5.0%	382	68.2%
35	1,131	762	48.4%	942	20.1%	1,252	-9.7%	606	86.7%
36	1,198	833	43.7%	1,111	7.9%	1,155	3.7%	809	48.1%
37	1,688	1,377	22.6%	1,739	-2.9%	1,696	-0.4%	1,049	61.0%
38 TRANSITWAY MAX	5,415	2,642	104.9%	4,147	30.6%	4,801	12.8%	2,621	106.6%
40	572	375	52.6%	447	27.9%	604	-5.2%	301	89.8%
42	412	291	41.4%	416	-1.1%	522	-21.1%	212	93.7%
52	502	372	34.8%	466	7.6%	572	-12.3%	258	94.5%
54	1,185	953	24.3%	1,171	1.2%	1,261	-6.1%	767	54.5%
55 MARLINS SHUTTLE									
62	987	520	90.0%	891	10.9%	982	0.5%	580	70.2%
71 (*)	184	181	1.5%	162	13.6%	134	37.7%	98	88.1%
72 (*)	273	347	-21.3%	265	3.3%	268	2.1%	241	13.6%
73	676	374	80.8%	495	36.6%	639	5.7%	317	113.3%
75	311	215	44.6%	271	15.0%	337	-7.7%	185	67.9%
77	3,800	2,668	42.4%	2,815	35.0%	3,776	0.6%	2,104	80.6%
87	339	285	18.8%	319	6.1%	369	-8.2%	199	70.3%
88	1,239	935	32.5%	1,286	-3.7%	1,294	-4.3%	848	46.1%
99	757	526	43.8%	658	15.0%	854	-11.4%	509	48.6%

METROBUS AVERAGE SUNDAY BOARDINGS BY ROUTE

Route	Average Sunday	Average Sunday	Percent Change	Average Sunday	Percent Change	Average Sunday	Percent Change	Average Sunday	Percent Change
Sundays	Aug-23	Aug-22	YOY	Feb-20	Current vs Feb-20	Jul-23	MOM	Aug-21	YO2Y
101 - A (*)	31	36	-13.3%	56	-44.1%	44	-29.8%	34	-9.4%
103 - C				212				102	
104	326	238	37.1%	317	2.8%	369	-11.5%	143	128.6%
105 - E	653	495	31.8%	616	6.0%	686	-4.9%	439	48.8%
107 - G	1,047	693	51.1%	895	16.9%	1,051	-0.4%	641	63.3%
108 - H	488	301	62.0%	328	48.5%	371	31.3%	195	150.3%
110 - J	1,895	1,140	66.2%	1,638	15.7%	1,721	10.1%	943	100.9%
112 - L	4,696	3,901	20.4%	4,804	-2.3%	5,153	-8.9%	3,241	44.9%
113 - M	465	242	92.5%	431	8.0%	462	0.6%	244	90.4%
115 (*)	60	55	8.6%	80	-25.0%	63	-4.5%	97	-38.4%
119 - S	7,792	5,313	46.7%	7,141	9.1%	7,982	-2.4%	4,666	67.0%
120 - BEACH MAX	3,464	2,420	43.1%	3,469	-0.1%	3,692	-6.2%	1,834	88.9%
135	393	157	150.3%	349	12.5%	387	1.6%	193	103.6%
137 - WEST DADE CONN.	947	796	19.0%	879	7.7%	999	-5.2%	523	81.2%
150 - MIAMI BEACH AIRPORT FLYER	1,970	1,375	43.2%	1,574	25.2%	1,900	3.7%	819	140.5%
183	1,550	984	57.5%	1,413	9.7%	1,625	-4.7%	971	59.5%
200 - CUTLER BAY LOCAL	64	48	32.8%	59	9.0%	54	18.1%	44	46.0%
202 - LITTLE HAITI CONN. (*)	23	40	-43.1%	39	-41.7%	27	-15.7%	54	-57.7%
207 (7st) - LITTLE HAVANA CIRC	609	510	19.3%	796	-23.5%	687	-11.4%	413	47.5%
208 (8st) - LITTLE HAVANA CIRC	762	516	47.7%	911	-16.4%	820	-7.0%	518	47.3%
210 - SKYLAKE CIRC (*)	139	134	4.3%	143	-2.6%	162	-14.0%	130	6.8%
241 TUTTLELIMITED	172	47	268.4%			177	-2.8%		
246 - NIGHT OWL	67	64	4.3%	87	-23.6%	58	14.3%	3	1895.0%
252 - CORAL REEF MAX	299	200	49.4%	199	50.6%	313	-4.2%	124	142.1%
301 DADE-MONROE EXPRESS (*)	895	691	29.7%	751	19.2%	879	1.9%	998	-10.3%
302 CARD SOUND EXPRESS (*)	73	68	7.8%	57	27.6%	81	-10.6%	75	-3.0%
338 - WEEKEND EXPRESS	316	173	82.7%	252	25.4%	207	52.7%	130	142.3%
500	74	16	355.4%	83	-10.6%	59	25.1%		
12/21 WEEKEND INTERL.	2,325	1,338	73.8%	2,048	13.5%	2,361	-1.5%	1,203	93.2%
Total	80,634	56,308	43.2%	75,428	6.9%	82,956	-2.8%	49,043	64.4%

METROBUS TOTAL MONTHLY BOARDINGS BY ROUTE

Route	Total Month	Total Month	Percent Change	Total Month	Percent Change	Total Month	Percent Change	Total Month	Percent Change
Monthly Total	Aug-23	Aug-22	YOY	Feb-20	Current vs Feb-20	Jul-23	MOM	Aug-21	YO2Y
1 (*)	6,149	6,026	2.0%	5,558	10.6%	5,383	14.2%	4,297	43.1%
2	75,168	50,108	50.0%	75,463	-0.4%	66,746	12.6%	47,646	57.8%
3	160,159	110,032	45.6%	146,294	9.5%	168,603	-5.0%	114,981	39.3%
7	101,416	82,967	22.2%	86,077	17.8%	92,469	9.7%	56,600	79.2%
8	120,139	92,564	29.8%	95,295	26.1%	112,740	6.6%	87,906	36.7%
9	168,420	115,940	45.3%	135,924	23.9%	156,758	7.4%	120,891	39.3%
10	68,315	46,923	45.6%	64,874	5.3%	66,328	3.0%	43,358	57.6%
11	249,354	178,232	39.9%	187,425	33.0%	224,992	10.8%	155,044	60.8%
12	62,361	44,634	39.7%	55,585	12.2%	52,517	18.7%	35,583	75.3%
16	54,224	38,713	40.1%	49,061	10.5%	52,333	3.6%	32,728	65.7%
17	105,869	74,889	41.4%	96,715	9.5%	95,036	11.4%	57,672	83.6%
19	35,896	22,532	59.3%	30,847	16.4%	31,028	15.7%	17,250	108.1%
21	44,523	26,811	66.1%	36,341	22.5%	36,986	20.4%	23,827	86.9%
22	114,304	77,947	46.6%	89,404	27.9%	102,503	11.5%	59,454	92.3%
24 - Coral Way Limited	59,645	44,894	32.9%	36,237	64.6%	56,923	4.8%	25,779	131.4%
26	46,419	37,230	24.7%	42,683	8.8%	35,413	31.1%	31,089	49.3%
27	182,968	135,009	35.5%	171,282	6.8%	172,159	6.3%	119,924	52.6%
29 (*)	11,262	9,104	23.7%	10,684	5.4%	9,699	16.1%	6,138	83.5%
31 - BUSWAY LOCAL		21,146		29,125		22,162		17,543	
32	65,686	46,676	40.7%	56,027	17.2%	59,295	10.8%	34,819	88.6%
33	47,954	36,373	31.8%	40,918	17.2%	44,234	8.4%	25,058	91.4%
34 TRANSITWAY EXPRESS	33,049	24,059	37.4%	40,159	-17.7%	27,556	19.9%	16,738	97.4%
35	73,338	46,738	56.9%	59,041	24.2%	64,383	13.9%	34,942	109.9%
36	70,916	52,087	36.1%	61,606	15.1%	66,074	7.3%	42,880	65.4%
37	92,134	69,630	32.3%	82,870	11.2%	87,471	5.3%	62,979	46.3%
38 TRANSITWAY MAX	148,274	118,863	24.7%	167,379	-11.4%	181,322	-18.2%	105,345	40.8%
39 TRANSITWAY EXPRESS	12,506			17,853	-30.0%	2,537	392.9%	3,077	306.4%
40	56,429	39,333	43.5%	40,497	39.3%	52,712	7.1%	27,804	103.0%
42	25,931	17,849	45.3%	20,825	24.5%	25,254	2.7%	15,465	67.7%
46 - LIBERTY CITY CONN. (*)	418	341	22.6%	814	-48.6%	286	46.2%	302	38.4%
51 - FLAGLER MAX	81,333	67,080	21.2%	62,186	30.8%	71,275	14.1%	47,102	72.7%
52	34,327	24,523	40.0%	30,522	12.5%	31,682	8.3%	20,142	70.4%
54	81,807	59,564	37.3%	72,125	13.4%	76,668	6.7%	49,902	63.9%
55 MARLINS SHUTTLE									
56 (*)	7,995	7,106	12.5%	7,071	13.1%	6,564	21.8%	4,964	61.1%
57	11,421	7,595	50.4%	8,665	31.8%	10,068	13.4%	5,896	93.7%
62	61,064	34,090	79.1%	46,582	31.1%	51,365	18.9%	32,000	90.8%
71 (*)	17,413	14,986	16.2%	16,118	8.0%	14,941	16.5%	9,294	87.4%
72 (*)	17,498	16,421	6.6%	18,433	-5.1%	16,070	8.9%	11,698	49.6%

METROBUS TOTAL MONTHLY BOARDINGS BY ROUTE

Route	Total Month	Total Month	Percent Change	Total Month	Percent Change	Total Month	Percent Change	Total Month	Percent Change
Monthly Total	Aug-23	Aug-22	YOY	Feb-20	Current vs Feb-20	Jul-23	MOM	Aug-21	YO2Y
73	72,942	59,617	22.4%	48,767	49.6%	65,613	11.2%	35,337	106.4%
75	33,713	21,600	56.1%	31,994	5.4%	27,565	22.3%	19,669	71.4%
77	241,187	154,325	56.3%	174,833	38.0%	223,471	7.9%	139,774	72.6%
79 STREET MAX	10,513	6,590	59.5%	7,228	45.4%	9,494	10.7%		
82 - WESTCHESTER CIRC. (*)	1,783	1,572	13.4%	1,482	20.3%	1,589	12.2%	749	138.1%
87	46,870	37,183	26.1%	33,273	40.9%	41,019	14.3%	23,728	97.5%
88	64,036	50,342	27.2%	54,772	16.9%	60,825	5.3%	50,875	25.9%
93 - BISCAYNE MAX	78,859	51,677	52.6%	66,684	18.3%	68,548	15.0%	37,645	109.5%
95 EXPRESS	27,093	19,071	42.1%	33,796	-19.8%	24,267	11.6%	9,799	176.5%
99	47,014	32,970	42.6%	36,325	29.4%	44,514	5.6%	25,870	81.7%
101 - A (*)	4,607	5,122	-10.1%	4,114	12.0%	3,953	16.5%	3,043	51.4%
103 - C				11,682				5,576	
104	23,676	16,685	41.9%	20,351	16.3%	21,848	8.4%	13,293	78.1%
105 - E	36,790	28,530	29.0%	31,302	17.5%	34,399	7.0%	22,890	60.7%
107 - G	55,724	40,113	38.9%	43,178	29.1%	51,022	9.2%	30,927	80.2%
108 - H	14,475	10,394	39.3%	12,624	14.7%	15,905	-9.0%	7,940	82.3%
110 - J	86,147	60,585	42.2%	66,481	29.6%	82,444	4.5%	48,401	78.0%
112 - L	235,611	181,915	29.5%	200,268	17.6%	233,982	0.7%	172,091	36.9%
113 - M	25,413	14,735	72.5%	21,548	17.9%	24,376	4.3%	11,079	129.4%
115 (*)	3,614	3,525	2.5%	4,334	-16.6%	3,693	-2.1%	3,851	-6.2%
119 - S	283,670	203,058	39.7%	242,257	17.1%	277,543	2.2%	190,188	49.2%
120 - BEACH MAX	174,639	141,929	23.0%	170,942	2.2%	175,330	-0.4%	103,584	68.6%
132 TRI-RAIL (DORAL)	962	86	1018.6%	312	208.3%	812	18.5%	224	329.5%
135 (*)	37,511	23,040	62.8%	32,067	17.0%	32,533	15.3%	13,606	175.7%
136	3,382	2,449	38.1%	2,524	34.0%	2,927	15.5%	2,249	50.4%
137 - WEST DADE CONN.	58,142	43,050	35.1%	41,167	41.2%	53,407	8.9%	25,219	130.5%
150 - MIAMI BEACH AIRPORT FLYER	69,413	48,574	42.9%	51,651	34.4%	65,058	6.7%	28,640	142.4%
155 - BISCAYNE GARDENS CIRCULATOR (*)	1,099	830	32.4%	881	24.7%	956	15.0%	550	99.8%
175 - NW MIAMI-DADE EXPRESS				661					
183	90,932	61,859	47.0%	77,570	17.2%	84,512	7.6%	50,105	81.5%
195 EXPRESS - BROWARD BLVD				7,441					
196 EXPRESS - SHERIDAN ST				7,658					
200 - CUTLER BAY LOCAL	5,126	2,992	71.3%	3,984	28.7%	4,832	6.1%	1,942	164.0%
202 - LITTLE HAITI CONN. (*)	2,732	2,789	-2.0%	3,200	-14.6%	2,265	20.6%	2,333	17.1%
204 KILLIAN KAT	13,673	10,886	25.6%	21,418	-36.2%	13,090	4.5%		

METROBUS TOTAL MONTHLY BOARDINGS BY ROUTE

Route	Total Month	Total Month	Percent Change	Total Month	Percent Change	Total Month	Percent Change	Total Month	Percent Change
Monthly Total	Aug-23	Aug-22	YOY	Feb-20	Current vs Feb-20	Jul-23	MOM	Aug-21	YO2Y
207 (7st) - LITTLE HAVANA CIRC	43,965	31,155	41.1%	38,127	15.3%	41,977	4.7%	20,819	111.2%
208 (8st) - LITTLE HAVANA CIRC	43,175	29,392	46.9%	35,018	23.3%	40,933	5.5%	22,494	91.9%
210 - SKYLAKE CIRC (*)	7,428	7,729	-3.9%	7,033	5.6%	8,949	-17.0%	6,862	8.2%
211 - OVERTOWN CIRC. (*)	1,915	1,967	-2.6%	1,159	65.2%	1,325	44.5%	743	157.7%
212 - SWEETWATER CIRC. (*)	581	530	9.6%	295	96.9%	452	28.5%	681	-14.7%
217 - BUNCHE PARK CIRC (*)	1,428	1,482	-3.6%	1,949	-26.7%	1,105	29.2%	884	61.5%
238 EAST/WEST CONN.	13,959	9,930	40.6%	8,987	55.3%	11,701	19.3%	5,538	152.1%
241 TUTTLE LIMITED	8,495	2,036	317.2%			7,794	9.0%		
246 - NIGHT OWL	1,698	1,616	5.1%	2,641	-35.7%	1,654	2.7%	106	1501.9%
248 - PRINCETON CIRCULATOR (*)	3,374	2,532	33.3%	2,690	25.4%	2,105	60.3%	1,360	148.1%
252 - CORAL REEF MAX	25,125	16,730	50.2%	19,325	30.0%	22,468	11.8%	10,840	131.8%
254 - BROWNSVILLE CIRC. (*)	146	186	-21.5%	384	-62.0%	115	27.0%	147	-0.7%
267 - LUDLAM LIMITED (*)	3,524	3,322	6.1%	2,978	18.3%	3,427	2.8%	2,200	60.2%
272 SUNSET KAT (*)	9,839	7,990	23.1%	11,004	-10.6%	7,856	25.2%	6,146	60.1%
277 - 7th AVENUE MAX	17,363	11,973	45.0%	13,669	27.0%	14,383	20.7%	6,465	168.6%
286 - NORTH POINTE CIRC. (*)	1,916	1,658	15.6%	2,145	-10.7%	1,407	36.2%	854	124.4%
287 - SAGA BAY MAX	7,298	4,312	69.2%	7,160	1.9%	6,067	20.3%	3,622	101.5%
288 - KENDALL CRUISER	8,451	6,854	23.3%	15,249	-44.6%	8,363	1.1%		
295 EXPRESS - BROWARD BLVD - CIVIC CENTER				4,668					
296 EXPRESS - SHERIDAN ST - CIVIC CENTER				4,297					
297-27th AVENUE ORANGE MAX	26,845	18,204	47.5%	27,125	-1.0%	21,986	22.1%	13,200	103.4%
301 DADE-MONROE EXPRESS (*)	31,202	23,723	31.5%	23,838	30.9%	29,890	4.4%	31,384	-0.6%
302 CARD SOUND EXPRESS (*)	2,780	2,343	18.7%	2,236	24.3%	2,767	0.5%	2,335	19.1%
338 - WEEKEND EXPRESS	2,271	1,141	99.0%	2,191	3.7%	2,573	-11.7%	1,145	98.3%
344 (*)	1,779	1,198	48.5%	1,919	-7.3%	1,359	30.9%	1,115	59.6%
500	2,291	431	431.6%	2,301	-0.4%	2,443	-6.2%	139	1548.2%
836 EXPRESS	5,808	3,377	72.0%			6,733	-13.7%	2,115	174.6%
837 EXPRESS	3,820					2,879	32.7%		
12/21 WEEKEND INTERL.	21,736	12,669	71.6%	20,830	4.3%	29,051	-25.2%	12,708	71.0%
GREEN HILLS SHUTTLE (*)	28	20	40.0%	36	-22.2%	34	-17.6%	27	3.7%
KINGS CREEK SHUTTLE (*)	54	81	-33.3%	52	3.8%	27	100.0%	40	35.0%
SIERRA LAKES SHUTTLE (*)	90	71	26.8%	180	-50.0%	58	55.2%	67	34.3%
ROBERT SHARP SHUTTLE (*)	97	73	32.9%	38	155.3%	89	9.0%	72	34.7%
AHEPA SHUTTLE (*)	76	67	13.4%	83	-8.4%	55	38.2%	75	1.3%
FEDERATION GARDENS SHUTTLE (*)	74	106	-30.2%	142	-47.9%	106	-30.2%	75	-1.3%
Total	4,756,063	3,442,006	38.2%	4,123,083	15.4%	4,484,458	6.1%	2,843,552	67.3%

YEAR-OVER-YEAR BUS RIDERSHIP BY ROUTE SERVICE TYPE

Boardings by Service Type and Route	Average Weekday	Average Weekday	Percent Change	Average Saturday	Average Saturday	Percent Change	Average Sunday	Average Sunday	Percent Change	Total Monthly	Total Monthly	Percent Change
	Aug-23	Aug-22	23 vs 22	Aug-23	Aug-22	23 vs 22	Aug-23	Aug-22	23 vs 22	Aug-23	Aug-22	23 vs 22
Directly Operated Express Routes (1)												
34 EXPRESS	1,437	1,046	37.4%							33,049	24,059	37.4%
39 EXPRESS	544									12,506		
95-EXPRESS	1,178	829	42.1%							27,093	19,071	42.1%
150-MIAMI BEACH AIRPORT FLYER	2,278	1,597	42.6%	2,287	1,586	44.2%	1,970	1,375	43.2%	69,413	48,574	42.9%
175 - NW MIAMI-DADE EXPRESS												
195 EXPRESS - BROWARD BLVD												
196 EXPRESS - SHERIDAN ST												
295 EXPRESS - BROWARD BLVD - CIVIC CENTER												
296 EXPRESS - SHERIDAN ST - CIVIC CENTER												
204 KAT-KILLIAN	594	473								13,673	10,886	25.6%
288 KENDALL CRUISER	367	298								8,451	6,854	23.3%
338 - WEEKEND EXPRESS				252	112	124.3%	316	173	82.7%	2,271	1,141	99.0%
836 EXPRESS	253	147	72.0%							5,808	3,377	72.0%
837 EXPRESS	166									3,820		
Subtotal Express Routes	6,817	4,390	55.3%	2,539	1,698	49.5%	2,286	1,548	47.7%	176,084	113,962	54.5%
Percentage of All Bus Routes	3.9%	3.5%		2.3%	2.2%		2.8%	2.7%		3.7%	3.3%	
Contracted Routes												
1	213	195	9.7%	158	186	-14.8%	152	202	-24.8%	6,149	6,026	2.0%
29	490	396	23.7%							11,262	9,104	23.7%
46 - LIBERTY CITY CONN.	18	15	22.6%							418	341	22.6%
56	348	309	12.5%							7,995	7,106	12.5%
71	683	579	18.1%	240	237	1.3%	184	181	1.5%	17,413	14,986	16.2%
72	649	589	10.3%	367	373	-1.6%	273	347	-21.3%	17,498	16,421	6.6%
82 - WESTCHESTER CIRC	70	60	16.3%	45	48	-7.3%				1,783	1,572	13.4%
101 - A	181	204	-11.2%	81	74	9.9%	31	36	-13.3%	4,607	5,122	-10.1%
115	134	134	-0.2%	74	55	35.2%	60	55	8.6%	3,614	3,525	2.5%
155 - BISCAYNE GARDENS CIRC	48	36	32.4%							1,099	830	32.4%
202 - LITTLE HAITI CONN.	111	107	3.5%	23	42	-44.3%	23	40	-43.1%	2,732	2,789	-2.0%
210 - SKYLAKE CIRC	285	293	-2.7%	80	116	-31.1%	139	134	4.3%	7,428	7,729	-3.9%
211-OVERTOWN CIRC	83	86	-2.6%							1,915	1,967	-2.6%
212-SWEETWATER CIRC	25	23	9.6%							581	530	9.6%
217 - BUNCHE PARK CIRC	62	64	-3.6%							1,428	1,482	-3.6%
246 - NIGHT OWL	56	52	9.0%	35	44	-20.6%	67	64	4.3%	1,698	1,616	5.1%
248 - PRINCETON CIRCULATOR	147	110	33.3%							3,374	2,532	33.3%
254-BROWNSVILLE CIRC	6	8	-21.5%							146	186	-21.5%
286-NORTH POINTE CIRC	77	63	22.0%	34	50	-31.8%				1,916	1,658	15.6%
344	77	52	48.5%							1,779	1,198	48.5%
Subtotal Contracted Reg. & Circ. Routes	3,764	3,374	11.6%	1,136	1,223	-7.1%	929	1,059	-12.3%	94,835	86,720	9.4%
Percentage of All Bus Routes	2.2%	2.7%		1.0%	1.6%		1.2%	1.9%		2.0%	2.5%	

(1) Several express routes were suspended beginning at the end of March 2020, due to the SARS-CoV-2 pandemic, while other routes had alignment and schedule modifications made to them, in an ongoing effort to optimize service delivery..

YEAR-OVER-YEAR BUS RIDERSHIP BY ROUTE SERVICE TYPE

Boardings by Service Type and Route	Average Weekday	Average Weekday	Percent Change	Average Saturday	Average Saturday	Percent Change	Average Sunday	Average Sunday	Percent Change	Total Monthly	Total Monthly	Percent Change
	Aug-23	Aug-22	23 vs 22	Aug-23	Aug-22	23 vs 22	Aug-23	Aug-22	23 vs 22	Aug-23	Aug-22	23 vs 22
Contracted Express Routes												
272 SUNSET-KAT	428	347	23.1%							9,839	7,990	23.1%
301-DADE MONROE EXPRESS	1,030	771	33.6%	982	807	21.7%	895	691	29.7%	31,202	23,723	31.5%
302-CARD SOUND EXPRESS	93	77	19.9%	90	74	21.4%	73	68	7.8%	2,780	2,343	18.7%
Subtotal Contracted Express Routes	1,551	1,196	29.7%	1,072	881	21.7%	968	758	27.7%	43,821	34,056	28.7%
Percentage of All Bus Routes	0.9%	0.9%		1.0%	1.1%		1.2%	1.3%		0.9%	1.0%	
Limited Stop Routes												
24-CORAL WAY LIMITED	2,164	1,634	32.5%	1,406	1,069	31.5%	1,061	761	39.3%	59,645	44,894	32.9%
51-FLAGLER MAX	3,536	2,917	21.2%							81,333	67,080	21.2%
79 STREET MAX	457	287	59.5%							10,513	6,590	59.5%
93 - BISCAYNE MAX	3,429	2,247	52.6%							78,859	51,677	52.6%
120 - BEACH MAX	6,019	5,116	17.6%	5,589	3,645	53.3%	3,464	2,420	43.1%	174,639	141,929	23.0%
241 TUTTLE LIMITED	306	74	316.1%	193	40	387.3%	172	47	268.4%	8,495	2,036	317.2%
252-CORAL REEF MAX	973	650	49.7%	388	245	58.1%	299	200	49.4%	25,125	16,730	50.2%
267-LUDLAM LIMITED (contracted)	153	144	6.1%							3,524	3,322	6.1%
277-7TH AVENUE MAX	755	521	45.0%							17,363	11,973	45.0%
287-SAGA BAY MAX	317	187	69.2%							7,298	4,312	69.2%
297-27th AVENUE ORANGE MAX	1,167	791	47.5%							26,845	18,204	47.5%
Subtotal Limited Stop Routes	19,276	14,567	32.3%	7,575	4,999	51.5%	4,996	3,429	45.7%	493,639	368,747	33.9%
Percentage of All Bus Routes	11.1%	11.5%		7.0%	6.5%		6.2%	6.1%		10.4%	10.7%	
Directly Operated Free Routes												
132 -TRI-RAIL DORAL	42	5	678.2%							962	86	1018.6%
200-CUTLER BAY LOCAL	183	106	71.9%	165	88	88.3%	64	48	32.8%	5,126	2,992	71.3%
Subtotal Free Directly Operated Routes	225	112	101.0%	165	88	88.3%	64	48	32.8%	6,088	3,078	97.8%
Percentage of All Bus Routes	0.1%	0.1%		0.2%	0.1%		0.1%	0.1%		0.1%	0.1%	
Shuttles												
55-MARLINS SHUTTLE												
Percentage of All Bus Routes												
Contractor-Operated Lifeline Routes												
GREEN HILLS SHUTTLE	7	4	75.0%							28	20	40.0%
KINGS CREEK SHUTTLE	11	20	-46.7%							54	81	-33.3%
SIERRA LAKES SHUTTLE	23	18	26.8%							90	71	26.8%
ROBERT SHARP SHUTTLE	19	15	32.9%							97	73	32.9%
AHEPA SHUTTLE	15	17	-9.3%							76	67	13.4%
FEDERATION GARDENS SHUTTLE				25	27	-6.9%				74	106	-30.2%
Subtotal Contractor-Operated Lifeline Routes	75	73	2.1%	25	27	-6.9%				419	418	0.2%
Percentage of All Bus Routes	0.0%	0.1%		0.0%	0.0%					0.0%	0.0%	
All Other (Regular) Routes	142,177	102,889	38.2%	96,383	67,679	42.4%	71,392	49,467	44.3%	3,941,177	2,835,025	39.0%
Percentage of All Bus Routes	81.8%	81.3%		88.5%	88.4%		88.5%	87.9%		82.9%	82.4%	
Total Bus System	173,885	126,601	37.3%	108,894	76,593	42.2%	80,634	56,308	43.2%	4,756,063	3,442,006	38.2%

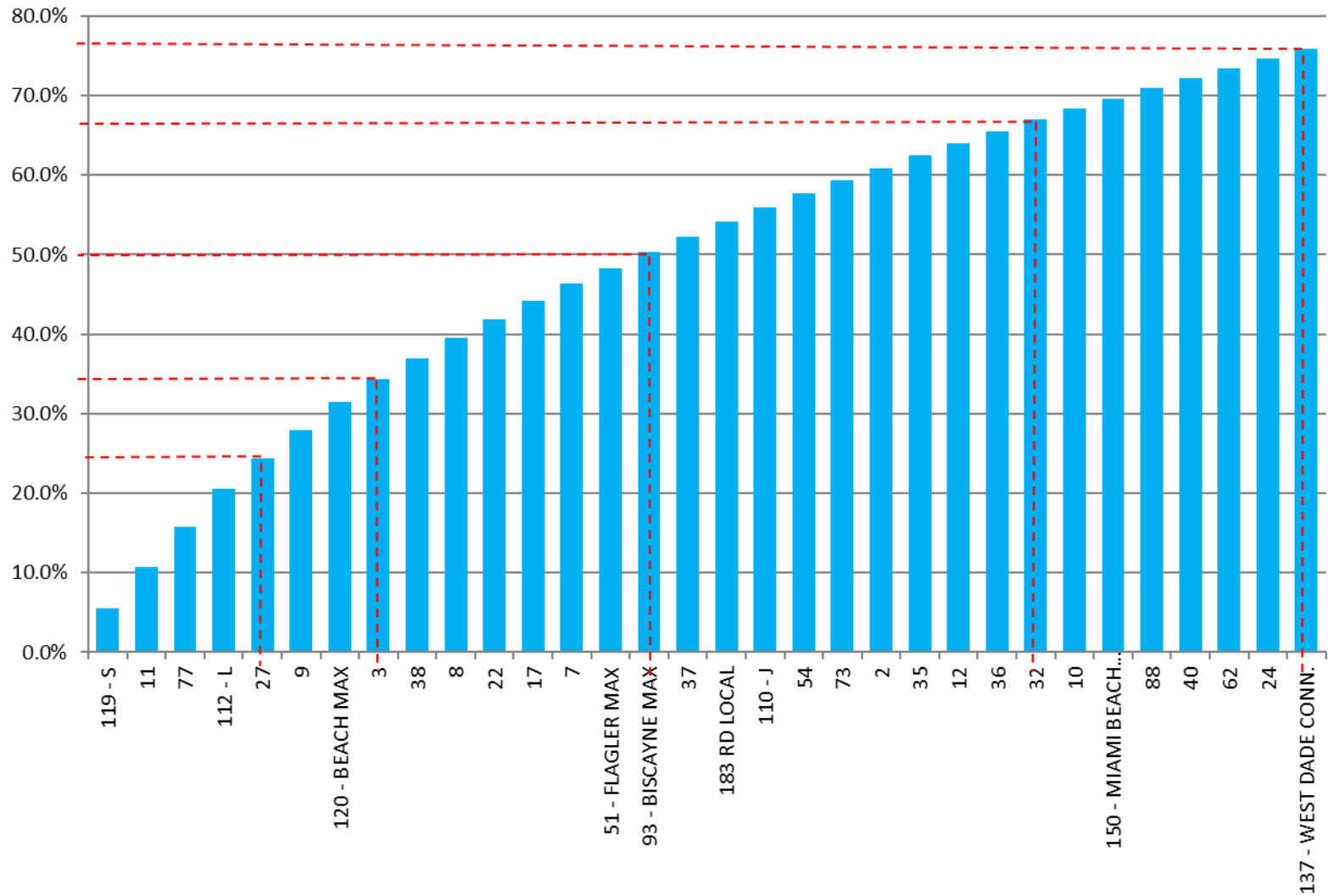
Bus Routes as Ranked by Percentage of Average Weekday Ridership August 2023

Rank	Route	Average Weekday	Percent Share	Cumul Pct Share	Rank	Route	Average Weekday	Percent Share	Cumul Pct Share	Rank	Route	Average Weekday	Percent Share	Cumul Pct Share
1	119	9,587	5.5%	5.5%	36	87	1,864	1.1%	80.3%	71	836	253	0.1%	98.7%
2	11	9,049	5.2%	10.7%	37	33	1,779	1.0%	81.3%	72	1	213	0.1%	98.8%
3	77	8,873	5.1%	15.8%	38	26	1,726	1.0%	82.3%	73	200	183	0.1%	98.9%
4	112	8,245	4.7%	20.6%	39	99	1,724	1.0%	83.3%	74	101	181	0.1%	99.0%
5	27	6,703	3.9%	24.4%	40	207	1,652	1.0%	84.3%	75	837	166	0.1%	99.1%
6	9	6,151	3.5%	28.0%	41	19	1,561	0.9%	85.1%	76	267	153	0.1%	99.2%
7	120	6,019	3.5%	31.4%	42	208	1,561	0.9%	86.0%	77	136	147	0.1%	99.3%
8	3	5,093	2.9%	34.3%	43	135	1,472	0.8%	86.9%	78	248	147	0.1%	99.4%
9	38	4,474	2.6%	36.9%	44	34	1,437	0.8%	87.7%	79	115	134	0.1%	99.5%
10	8	4,459	2.6%	39.5%	45	105	1,351	0.8%	88.5%	80	202	111	0.1%	99.5%
11	22	4,235	2.4%	41.9%	46	75	1,325	0.8%	89.3%	81	302	93	0.1%	99.6%
12	17	3,851	2.2%	44.1%	47	52	1,287	0.7%	90.0%	82	211	83	0.0%	99.6%
13	7	3,771	2.2%	46.3%	48	95	1,178	0.7%	90.7%	83	286	77	0.0%	99.7%
14	51	3,536	2.0%	48.3%	49	297	1,167	0.7%	91.3%	84	344	77	0.0%	99.7%
15	93	3,429	2.0%	50.3%	50	301	1,030	0.6%	91.9%	85	500	72	0.0%	99.8%
16	37	3,348	1.9%	52.2%	51	252	973	0.6%	92.5%	86	82	70	0.0%	99.8%
17	183	3,335	1.9%	54.1%	52	42	943	0.5%	93.0%	87	217	62	0.0%	99.8%
18	110	3,099	1.8%	55.9%	53	113	922	0.5%	93.6%	88	246	56	0.0%	99.9%
19	54	3,006	1.7%	57.7%	54	104	888	0.5%	94.1%	89	155	48	0.0%	99.9%
20	73	2,826	1.6%	59.3%	55	277	755	0.4%	94.5%	90	132	42	0.0%	99.9%
21	2	2,777	1.6%	60.9%	56	71	683	0.4%	94.9%	91	212	25	0.0%	99.9%
22	35	2,723	1.6%	62.4%	57	72	649	0.4%	95.3%	92	SL	23	0.0%	100.0%
23	12	2,711	1.6%	64.0%	58	238	607	0.3%	95.6%	93	RS	19	0.0%	100.0%
24	36	2,592	1.5%	65.5%	59	204	594	0.3%	96.0%	94	46	18	0.0%	100.0%
25	32	2,524	1.5%	67.0%	60	39	544	0.3%	96.3%	95	AS	15	0.0%	100.0%
26	10	2,331	1.3%	68.3%	61	57	497	0.3%	96.6%	96	KC	11	0.0%	100.0%
27	150	2,278	1.3%	69.6%	62	29	490	0.3%	96.9%	97	GH	7	0.0%	100.0%
28	88	2,270	1.3%	70.9%	63	108	471	0.3%	97.1%	98	254	6	0.0%	100.0%
29	40	2,199	1.3%	72.2%	64	79	457	0.3%	97.4%	entirely contracted				
30	62	2,183	1.3%	73.4%	65	272	428	0.2%	97.6%					
31	24	2,164	1.2%	74.7%	66	288	367	0.2%	97.8%					
32	137	2,093	1.2%	75.9%	67	56	348	0.2%	98.0%					
33	107	2,003	1.2%	77.0%	68	287	317	0.2%	98.2%					
34	21	1,936	1.1%	78.1%	69	241	306	0.2%	98.4%					
35	16	1,879	1.1%	79.2%	70	210	285	0.2%	98.6%					
										Total Boardings		173,885	100.0%	100.0%

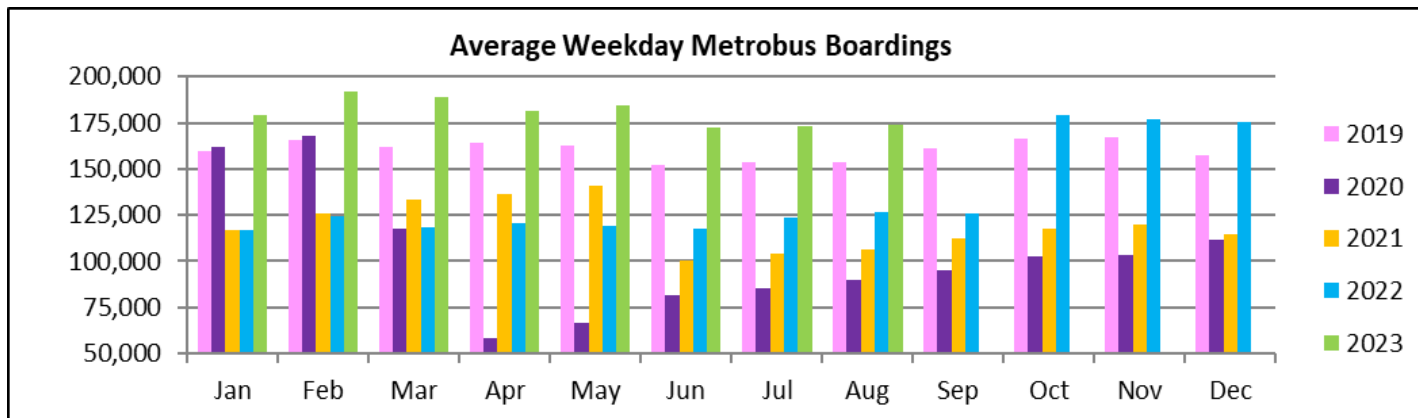
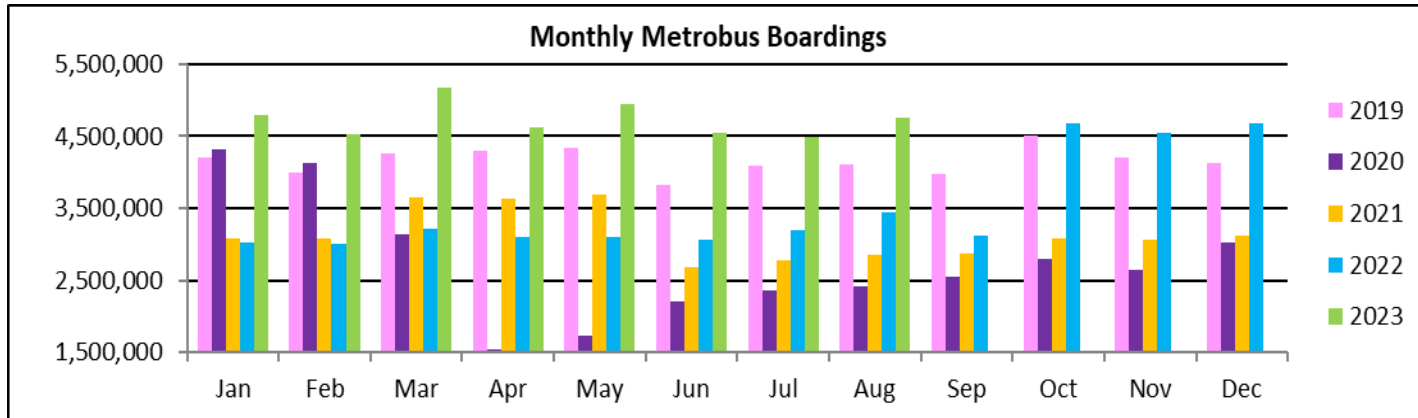
(1) Average weekday ridership rounded to the nearest unit.

(2) Includes the five Lifeline Shuttles that operate on weekdays: Ahepa, Green Hills, Kings Creek, Robert Sharp and Sierra Lakes.

Bus - Cumulative Percentage Average Weekday Ridership Share
Top 1/4, 1/3, 1/2, 2/3 and 3/4 of Routes



TOTAL MONTHLY AND AVERAGE WEEKDAY RIDERSHIP YEAR OVER YEAR COMPARISON CHARTS – METROBUS



**“TOP 5 / BOTTOM 5” BUS ROUTES AVERAGE WEEKDAY RIDERSHIP PERFORMANCE
YEAR OVER YEAR COMPARISONS**

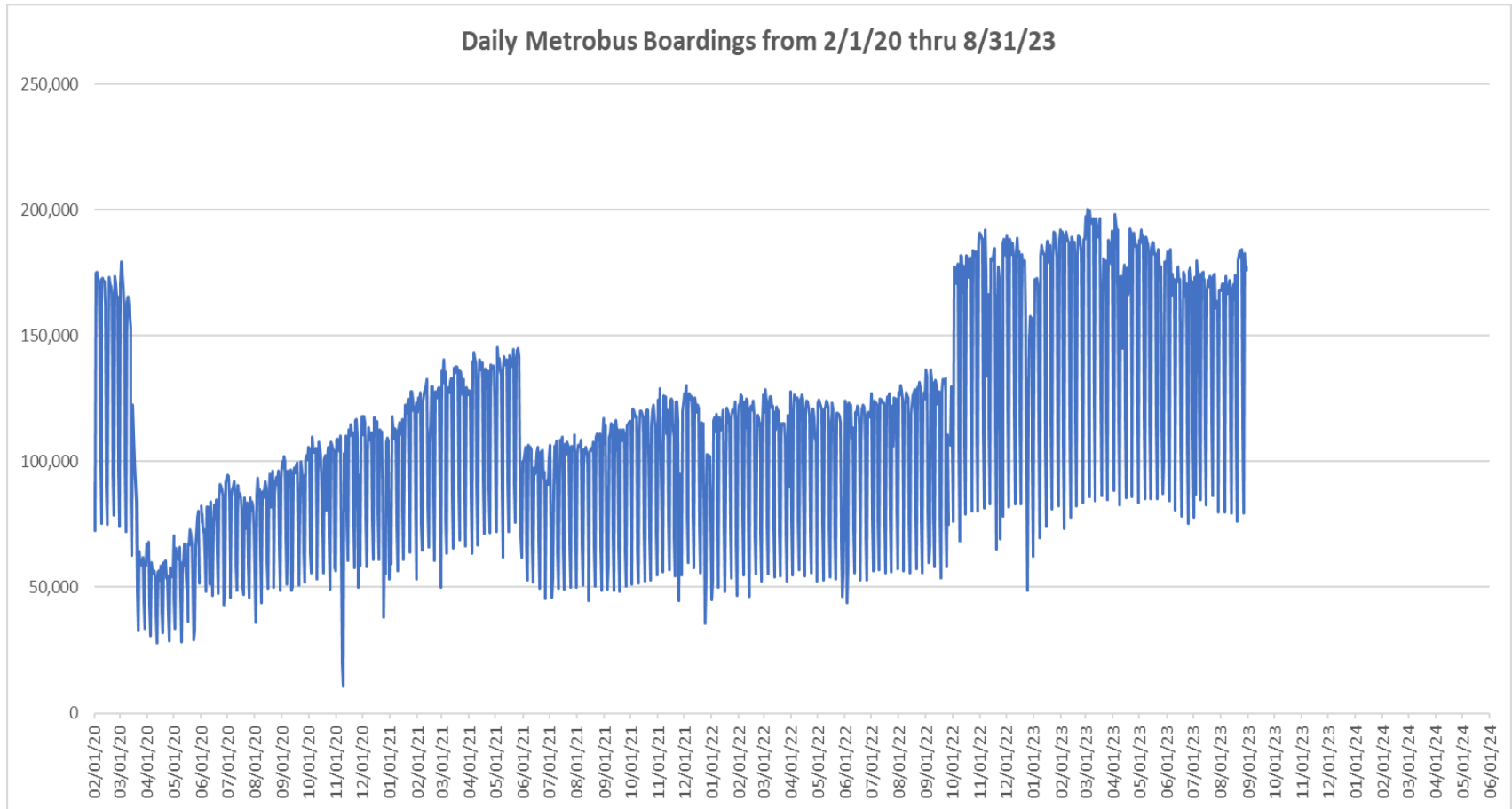
Route	Aug-23	Aug-22	Absolute Delta (1)	Percent Delta (2)
77	8,873	5,658	3,216	56.8%
119 - S	9,587	6,929	2,657	38.3%
11	9,049	6,393	2,656	41.5%
112 - L	8,245	6,336	1,909	30.1%
9	6,151	4,243	1,908	45.0%
101 - A (*)	181	204	-23	-11.2%
210 - SKYLAKE CIRC (*)	285	293	-8	-2.7%
217 - BUNCHE PARK CIRC (*)	62	64	-2	-3.6%
211 - OVERTOWN CIRC. (*)	83	86	-2	-2.6%
254 - BROWNSVILLE CIRC. (*)	6	8	-2	-21.5%

(1) Averages rounded to the nearest boarding, data as reported by farebox (NFS) and/or automatic passenger counter (APC) system, depending on year; Lifeline shuttles excluded.

(2) As a result of the SARS-CoV-2 pandemic, rides were fare-free beginning March 22, 2020. Fares were reinstated June 1, 2021, and ridership data from the farebox rather than the APC system is utilized from that date thru the end of September 2022. Beginning October 1, 2022, ridership is again reported from the APC system coupled with a new enhanced sensor system.

(*) Contracted route.

DAILY METROBUS RIDERSHIP SINCE FEBRUARY 1, 2020



- (1) National Emergency was declared on 3/13/20 as a result of the SARS-CoV-2 pandemic.
- (2) There was no Metrobus, Metrorail and Metromover service on 5/31/20, as a safety precaution, and no service for any of the four modes on 9/28/22 as a result of Hurricane Ian..
- (3) The dip at the start of the second week of November 2020 is due to Hurricane Eta.
- (4) The reduction seen beginning 6/1/21 is partly due to the resumption of fares and partly the result of resuming reporting Cubic farebox data rather than bus APC counts; the jump seen at the start of October 2022 is due to the return to APC bus ridership counts reporting on 10/1/22.
- (5) Periodic (weekly) variations are prominent, since weekday ridership is almost always significantly higher than weekend or holiday ridership.

METROBUS PARKING PATRONAGE SUMMARY

August 2023

PARK-RIDE LOT	ACTUAL AVAILABLE SPACES	ACTUAL OCCUPANCY	PERCENT OCCUPANCY
Transitway / SW 152nd St	200	130	65%
Transitway / SW 168th St (*)	149	0	0%
Transitway / SW 200th Street	100	30	30%
Transitway / SW 112 Ave (Target)	450	124	28%
Transitway / SW 244th St	95	74	78%
Transitway / SW 296th St	139	19	14%
Transitway / SW 344th St	248	162	65%
Coral Reef Drive 117/ Turnpike	95	76	80%
Golden Glades Facility	2,150	362	17%
Hammocks Town Center (SW 152 Ave / SW 104 St)	50	15	30%
Kendall Dr./SW 127th Ave	161	10	6%
West Kendall Transit Term (Kendall Dr / SW162 Ave)	40	13	33%
NW 7th Avenue Transit Village (NW 7 Ave / NW 62 St)	25	18	72%
Miami Gardens Dr. / NW 73rd Ave	136	0	0%
Dolphin Station	348	73	21%
Tamiami Station (eff 11-2022)	442	59	13%
I-75 / Miami Gardens Dr (**)	298	0	0%
TOTAL	5,126	1,165	23%

(*) Closed for construction beginning January 2022

(**) Route 175 Suspended 3/27/2020

Metrorail



August 2023

METRORAIL AVERAGE WEEKDAY BOARDINGS BY STATION (†)

Weekdays	Average Weekday	Average Weekday	Percent Change	Average Weekday	Percent Change	Average Weekday	Percent Change	Average Weekday	Percent Change
STATIONS	Aug-23	Aug-22	YOY	Feb-20	Current vs Feb-20	Jul-23	MOM	Aug-21	YO2Y
ALLAPATTAH	1,528	1,430	6.8%	1,942	-21.3%	1,513	1.0%	941	62.4%
BRICKELL	4,862	4,267	13.9%	6,529	-25.5%	4,618	5.3%	3,072	58.3%
BROWNSVILLE	510	643	-20.7%	862	-40.8%	623	-18.2%	527	-3.2%
CIVIC CENTER	4,266	3,570	19.5%	6,143	-30.6%	4,092	4.3%	2,673	59.6%
COCONUT GROVE	1,252	1,265	-1.1%	1,795	-30.3%	1,259	-0.6%	953	31.3%
CULMER	933	857	8.8%	1,392	-33.0%	862	8.2%	674	38.5%
DADELAND NORTH	3,810	3,368	13.1%	5,926	-35.7%	3,537	7.7%	2,304	65.4%
DADELAND SOUTH	4,351	3,778	15.1%	7,150	-39.2%	4,131	5.3%	2,822	54.1%
DOUGLAS ROAD	2,583	2,526	2.3%	3,624	-28.7%	1,826	41.4%	1,781	45.0%
DR. MARTIN LUTHER KING, JR.	808	756	6.8%	1,157	-30.2%	769	5.0%	607	33.0%
EARLINGTON HEIGHTS	1,273	1,169	8.9%	1,662	-23.4%	1,233	3.2%	797	59.7%
GOVERNMENT CENTER	6,263	5,581	12.2%	10,557	-40.7%	5,675	10.4%	3,966	57.9%
HIALEAH	748	998	-25.0%	1,253	-40.3%	710	5.4%	694	7.9%
MIAMI INTERNATIONAL AIRPORT	1,281	1,070	19.7%	1,711	-25.1%	1,228	4.3%	665	92.5%
NORTHSIDE	1,144	1,155	-1.0%	1,476	-22.5%	1,216	-6.0%	836	36.8%
OKEECHOBEE	839	787	6.6%	1,164	-27.9%	827	1.5%	557	50.8%
OVERTOWN / ARENA	1,657	1,280	29.5%	2,274	-27.1%	1,594	4.0%	754	119.9%
PALMETTO	1,193	1,095	8.9%	1,543	-22.7%	1,176	1.4%	755	58.0%
SANTA CLARA	623	560	11.1%	812	-23.3%	613	1.7%	386	61.2%
SOUTH MIAMI	1,785	1,728	3.3%	3,015	-40.8%	1,556	14.7%	1,278	39.6%
TRI-RAIL	997	934	6.8%	1,207	-17.4%	987	1.0%	690	44.5%
UNIVERSITY	1,664	1,427	16.6%	2,784	-40.2%	1,198	38.9%	924	80.1%
VIZCAYA	973	951	2.3%	1,390	-30.0%	857	13.6%	635	53.3%
TOTAL	45,342	41,197	10.1%	67,367	-32.7%	42,100	7.7%	29,290	54.8%

(†) In this table and those which follow, "YOY" stands for "year-over-year", "MOM" for "month-over-month" and "YO2Y" for "year over two years", i.e., current month vs 12 months prior, one month prior and 24 months prior, respectively.

METRORAIL AVERAGE SATURDAY BOARDINGS BY STATION

Saturdays	Average Saturday	Average Saturday	Percent Change	Average Saturday	Percent Change	Average Saturday	Percent Change	Average Saturday	Percent Change
STATIONS	Aug-23	Aug-22	YOY	Feb-20	Current vs Feb-20	Jul-23	MOM	Aug-21	YO2Y
ALLAPATTAH	860	822	4.7%	1,051	-18.2%	845	1.8%	562	53.2%
BRICKELL	2,307	2,067	11.6%	2,811	-17.9%	2,335	-1.2%	1,562	47.7%
BROWNSVILLE	311	393	-20.8%	520	-40.1%	390	-20.2%	330	-5.7%
CIVIC CENTER	727	617	17.8%	959	-24.2%	747	-2.7%	474	53.3%
COCONUT GROVE	650	683	-4.8%	928	-30.0%	729	-10.9%	518	25.4%
CULMER	451	440	2.5%	721	-37.4%	483	-6.6%	356	26.8%
DADELAND NORTH	1,354	1,325	2.2%	1,994	-32.1%	1,251	8.3%	984	37.6%
DADELAND SOUTH	1,832	1,700	7.8%	2,625	-30.2%	1,783	2.7%	1,264	44.9%
DOUGLAS ROAD	1,009	1,088	-7.3%	1,319	-23.5%	656	53.7%	800	26.1%
DR. MARTIN LUTHER KING, JR.	471	422	11.5%	625	-24.7%	454	3.6%	317	48.5%
EARLINGTON HEIGHTS	725	686	5.7%	935	-22.5%	729	-0.6%	486	49.0%
GOVERNMENT CENTER	2,621	2,434	7.7%	4,262	-38.5%	2,598	0.9%	1,764	48.5%
HIALEAH	371	494	-24.9%	583	-36.4%	343	8.0%	348	6.5%
MIAMI INTERNATIONAL AIRPORT	1,009	908	11.1%	1,330	-24.1%	919	9.8%	536	88.2%
NORTHSIDE	749	704	6.4%	878	-14.7%	804	-6.8%	534	40.4%
OKEECHOBEE	302	282	7.0%	408	-26.2%	316	-4.5%	248	21.8%
OVERTOWN / ARENA	610	375	62.9%	678	-10.0%	554	10.1%	279	118.8%
PALMETTO	353	339	4.1%	458	-22.9%	384	-8.0%	227	55.6%
SANTA CLARA	315	243	29.6%	422	-25.3%	314	0.4%	214	47.4%
SOUTH MIAMI	840	845	-0.6%	1,256	-33.1%	768	9.3%	626	34.3%
TRI-RAIL	499	439	13.7%	614	-18.8%	477	4.6%	311	60.4%
UNIVERSITY	544	491	10.9%	714	-23.8%	395	37.9%	368	48.0%
VIZCAYA	445	448	-0.7%	622	-28.5%	433	2.7%	332	33.9%
TOTAL	19,352	18,242	6.1%	26,714	-27.6%	18,705	3.5%	13,438	44.0%

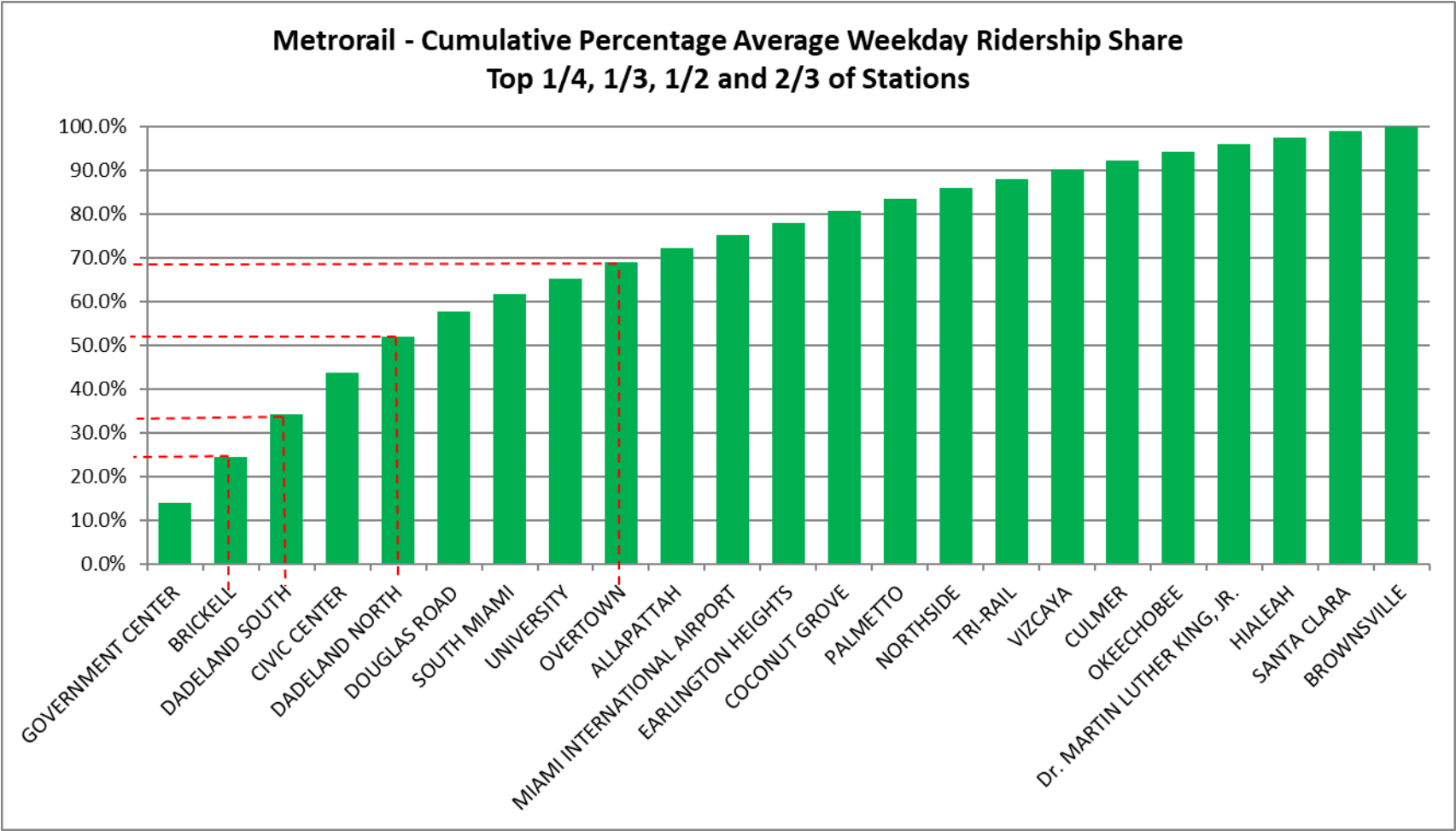
METRORAIL AVERAGE SUNDAY BOARDINGS BY STATION

Sundays	Average Sunday	Average Sunday	Percent Change	Average Sunday	Percent Change	Average Sunday	Percent Change	Average Sunday	Percent Change
STATIONS	Aug-23	Aug-22	YOY	Feb-20	Current vs Feb-20	Jul-23	MOM	Aug-21	YO2Y
ALLAPATTAH	634	598	6.0%	791	-19.8%	623	1.9%	404	56.9%
BRICKELL	1,666	1,681	-0.9%	2,379	-30.0%	1,772	-6.0%	1,239	34.5%
BROWNSVILLE	219	297	-26.3%	406	-46.1%	282	-22.5%	258	-15.3%
CIVIC CENTER	579	503	15.1%	791	-26.8%	594	-2.6%	364	59.0%
COCONUT GROVE	483	523	-7.6%	838	-42.4%	523	-7.7%	376	28.5%
CULMER	323	330	-2.1%	616	-47.6%	346	-6.9%	302	6.9%
DADELAND NORTH	958	969	-1.1%	1,685	-43.2%	893	7.3%	745	28.7%
DADELAND SOUTH	1,405	1,260	11.5%	2,210	-36.4%	1,365	2.9%	1,002	40.2%
DOUGLAS ROAD	754	775	-2.8%	1,090	-30.8%	437	72.6%	567	32.8%
DR. MARTIN LUTHER KING, JR.	320	331	-3.3%	506	-36.9%	331	-3.5%	235	35.8%
EARLINGTON HEIGHTS	533	538	-0.9%	799	-33.3%	559	-4.8%	344	55.0%
GOVERNMENT CENTER	2,031	1,835	10.7%	4,044	-49.8%	1,928	5.3%	1,331	52.6%
HIALEAH	267	360	-26.0%	472	-43.5%	267	-0.2%	257	3.9%
MIAMI INTERNATIONAL AIRPORT	920	877	4.9%	1,343	-31.5%	886	3.9%	539	70.8%
NORTHSIDE	580	538	7.9%	653	-11.1%	571	1.7%	423	37.2%
OKEECHOBEE	187	164	14.1%	273	-31.7%	206	-9.4%	122	52.4%
OVERTOWN / ARENA	428	274	56.2%	544	-21.3%	423	1.2%	263	62.6%
PALMETTO	220	202	8.8%	336	-34.6%	225	-2.2%	132	66.0%
SANTA CLARA	217	206	5.6%	280	-22.4%	206	5.5%	143	51.7%
SOUTH MIAMI	599	619	-3.2%	987	-39.3%	564	6.2%	476	25.8%
TRI-RAIL	327	350	-6.5%	528	-38.1%	332	-1.5%	255	27.9%
UNIVERSITY	411	433	-5.0%	608	-32.4%	330	24.5%	252	62.9%
VIZCAYA	311	336	-7.6%	524	-40.8%	321	-3.3%	258	20.3%
TOTAL	14,369	13,996	2.7%	22,701	-36.7%	13,985	2.7%	10,288	39.7%

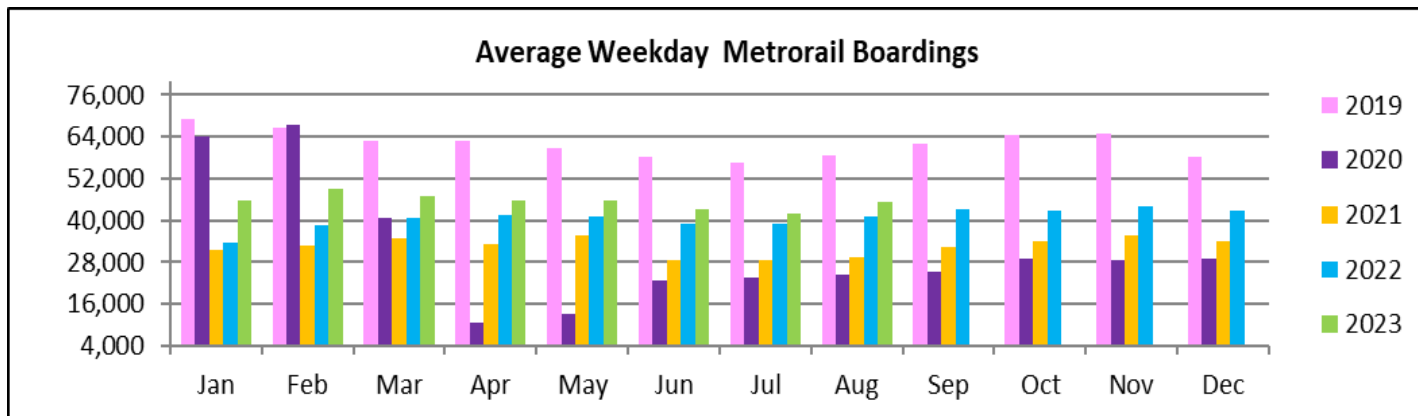
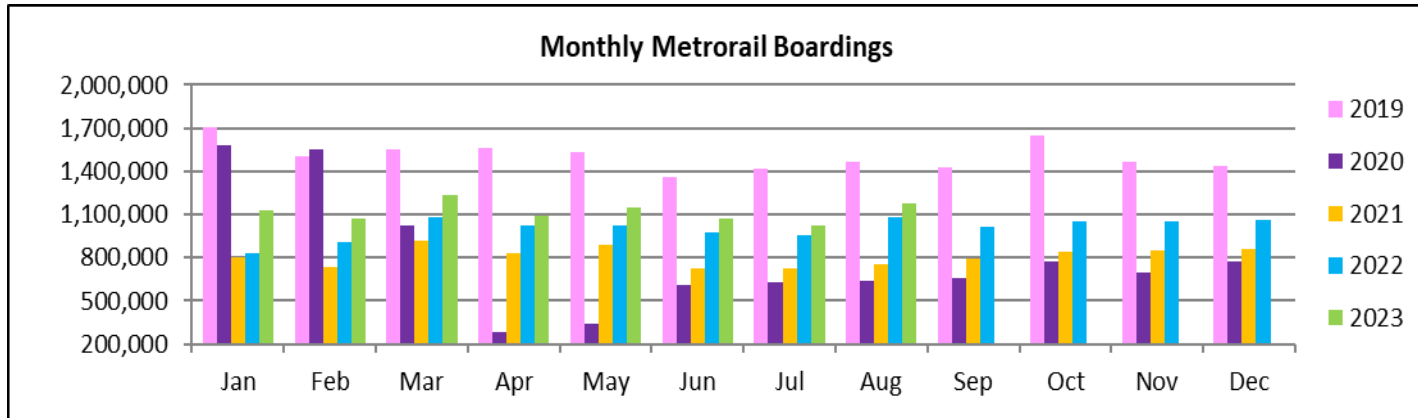
METRORAIL TOTAL MONTHLY BOARDINGS BY STATION

Monthly Totals	Total Month	Total Month	Percent Change	Total Month	Percent Change	Total Month	Percent Change	Total Month	Percent Change
STATIONS	Aug-23	Aug-22	YOY	Feb-20	Current vs Feb-20	Jul-23	MOM	Aug-21	YO2Y
ALLAPATTAH	41,128	38,579	6.6%	46,868	-12.2%	38,349	7.2%	24,971	64.7%
BRICKELL	127,727	113,144	12.9%	152,259	-16.1%	114,848	11.2%	80,020	59.6%
BROWNSVILLE	13,852	17,545	-21.0%	21,285	-34.9%	16,138	-14.2%	14,207	-2.5%
CIVIC CENTER	103,341	86,580	19.4%	128,921	-19.8%	89,310	15.7%	62,520	65.3%
COCONUT GROVE	33,318	33,915	-1.8%	43,580	-23.5%	32,051	4.0%	24,917	33.7%
CULMER	24,550	22,794	7.7%	33,497	-26.7%	21,861	12.3%	17,749	38.3%
DADELAND NORTH	96,871	86,642	11.8%	132,894	-27.1%	82,674	17.2%	58,348	66.0%
DADELAND SOUTH	113,014	98,740	14.5%	162,416	-30.4%	100,057	12.9%	72,162	56.6%
DOUGLAS ROAD	66,449	65,542	1.4%	82,141	-19.1%	42,619	55.9%	45,224	46.9%
DR. MARTIN LUTHER KING, JR.	21,736	20,396	6.6%	27,980	-22.3%	19,710	10.3%	15,800	37.6%
EARLINGTON HEIGHTS	34,297	31,781	7.9%	40,697	-15.7%	31,790	7.9%	21,192	61.8%
GOVERNMENT CENTER	162,662	145,428	11.9%	243,414	-33.2%	139,068	17.0%	100,960	61.1%
HIALEAH	19,762	26,367	-25.1%	29,516	-33.0%	17,557	12.6%	17,935	10.2%
MIAMI INTERNATIONAL AIRPORT	37,176	31,752	17.1%	46,115	-19.4%	34,546	7.6%	19,478	90.9%
NORTHSIDE	28,009	31,532	-11.2%	36,127	-22.5%	31,874	-12.1%	22,641	23.7%
OKEECHOBEE	21,260	19,888	6.9%	26,026	-18.3%	19,508	9.0%	13,846	53.5%
OVERTOWN / ARENA	42,271	32,039	31.9%	49,911	-15.3%	37,240	13.5%	19,014	122.3%
PALMETTO	29,725	27,361	8.6%	33,944	-12.4%	26,885	10.6%	18,177	63.5%
SANTA CLARA	16,453	14,685	12.0%	19,245	-14.5%	15,141	8.7%	10,070	63.4%
SOUTH MIAMI	46,800	45,602	2.6%	69,412	-32.6%	38,376	22.0%	32,999	41.8%
TRI-RAIL	26,239	24,638	6.5%	29,120	-9.9%	24,148	8.7%	17,708	48.2%
UNIVERSITY	42,100	36,525	15.3%	61,253	-31.3%	27,906	50.9%	23,058	82.6%
VIZCAYA	25,398	25,015	1.5%	32,497	-21.8%	21,281	19.3%	16,582	53.2%
TOTAL	1,174,138	1,076,490	9.1%	1,549,118	-24.2%	1,022,937	14.8%	749,578	56.6%

METRORAIL CUMULATIVE PERCENTAGE RIDERSHIP SHARE



TOTAL MONTHLY AND AVERAGE WEEKDAY RIDERSHIP YEAR OVER YEAR COMPARISON CHARTS – METRORAIL



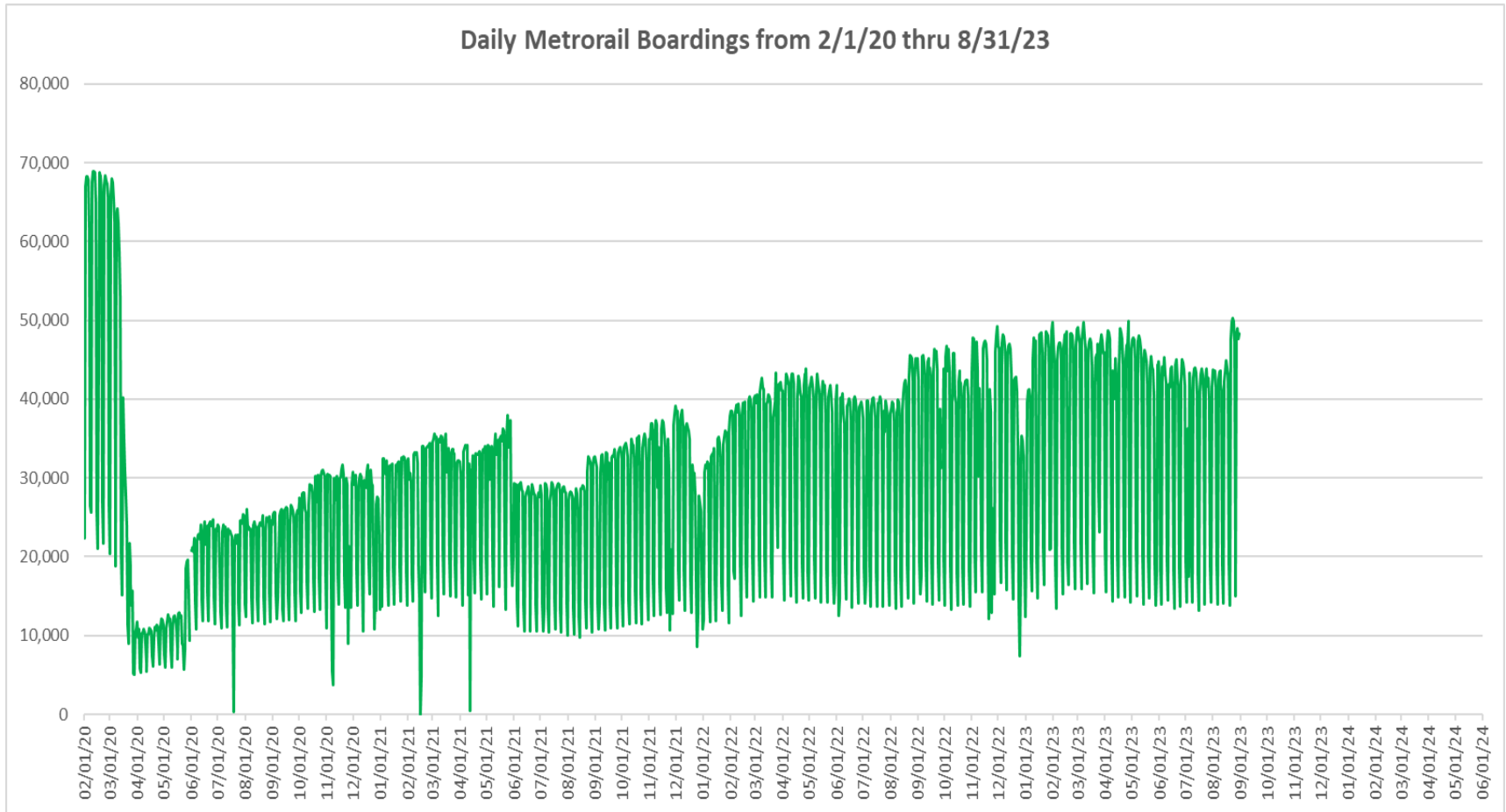
**“TOP 5 / BOTTOM 5” RAIL STATIONS AVERAGE WEEKDAY RIDERSHIP PERFORMANCE
YEAR OVER YEAR COMPARISONS**

Station	Aug-23	Aug-22	Absolute Delta (1)	Percent Delta
CIVIC CENTER	4,266	3,570	696	19.5%
GOVERNMENT CENTER	6,263	5,581	683	12.2%
BRICKELL	4,862	4,267	595	13.9%
DADELAND SOUTH	4,351	3,778	572	15.1%
DADELAND NORTH	3,810	3,368	442	13.1%
HIALEAH	748	998	-250	-25.0%
BROWNSVILLE	510	643	-133	-20.7%
COCONUT GROVE	1,252	1,265	-13	-1.1%
NORTHSIDE	1,144	1,155	-11	-1.0%
VIZCAYA	973	951	22	2.3%

(1) Averages rounded to the nearest boarding.

(2) As a result of the SARS-CoV-2 pandemic, rides were fare-free beginning March 22, 2020; nearly all rail stations continued reporting YOY gains in August 2023, as August 2022 still showed clear reduction effects on ridership from the SARS-CoV-2 pandemic. Fares were reinstated June 1, 2021, and ridership data from the faregate system rather than the video camera counter system is utilized from that date going forward.

DAILY METRORAIL RIDERSHIP SINCE FEBRUARY 1, 2020



- (1) National Emergency was declared on 3/13/20 as a result of the SARS-CoV-2 pandemic.
- (2) There was no Metrobus, Metrorail and Metromover service on 5/31/20, as a safety precaution, and no service for any of the four modes on 9/28/22 as a result of Hurricane Ian..
- (3) The dip at the start of the second week of November 2020 is due to Hurricane Eta; these are *raw data* from the Unleash Live contractor AI video system.
- (4) The dip on 4/13/21 is due to a loss of connectivity at all stations, affecting a few stations over the next two days as well.
- (5) The reduction seen beginning 6/1/21 is partly due to the resumption of fares and partly the result of resuming reporting Cubic faregate data rather than video camera counts.
- (6) Periodic (weekly) variations are prominent, since weekday ridership is almost always significantly higher than weekend or holiday ridership.

METRORAIL PARKING PATRONAGE SUMMARY

August 2023

PARK-RIDE LOT	ACTUAL CAPACITY (1)	ACTUAL OCCUPANCY (2)	PERCENT OCCUPANCY
DADELAND SOUTH	1,260	729	58%
DADELAND NORTH	1,963	715	36%
SOUTH MIAMI	1,081	233	22%
UNIVERSITY	260	165	63%
DOUGLAS ROAD	222	134	60%
COCONUT GROVE	100	60	60%
VIZCAYA	120	45	37%
CULMER	25	16	64%
SANTA CLARA	61	42	69%
ALLAPATTAH	74	7	10%
EARLINGTON HEIGHTS	361	138	38%
BROWNSVILLE	100	70	70%
DR. MARTIN LUTHER KING JR. (MDT) (*)	62	0	0%
DR. MARTIN LUTHER KING JR. (GARAGE) (*)	631	0	0%
NORTHSIDE	100	71	71%
HIALEAH	338	43	13%
OKEECHOBEE	1,398	136	10%
PALMETTO	700	143	20%
TOTAL	8,856	2,745	31%

- (1) Number of spaces could vary each week; shown are available spaces during final week of month, as submitted by DTPW Safety & Security office.
- (2) All sampled occupancy data provided by DTPW Safety & Security office; calculations are revisions to those submitted by that entity.
- (3) Daily averages rounded to nearest unit, with fewer counts at some stations due to shortage of DTPW Safety & Security office staff; calculations are based on sampled counted days only per raw data submitted, with resulting average daily occupancy shown.
- (*) Closed throughout the month, per the DTPW Safety & Security office.

Metromover



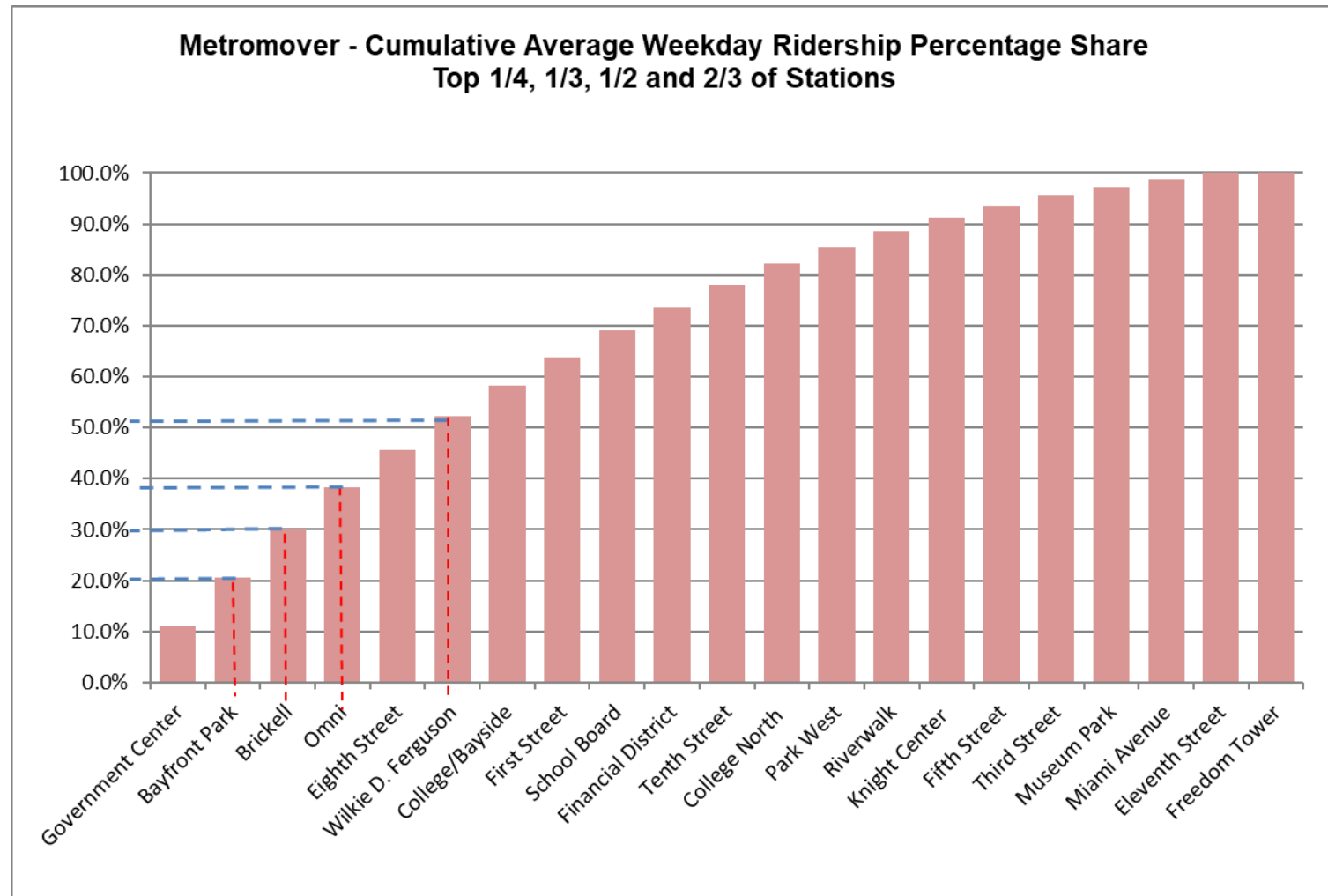
August 2023

METROMOVER MONTHLY AND AVERAGE DAILY BOARDINGS BY STATION

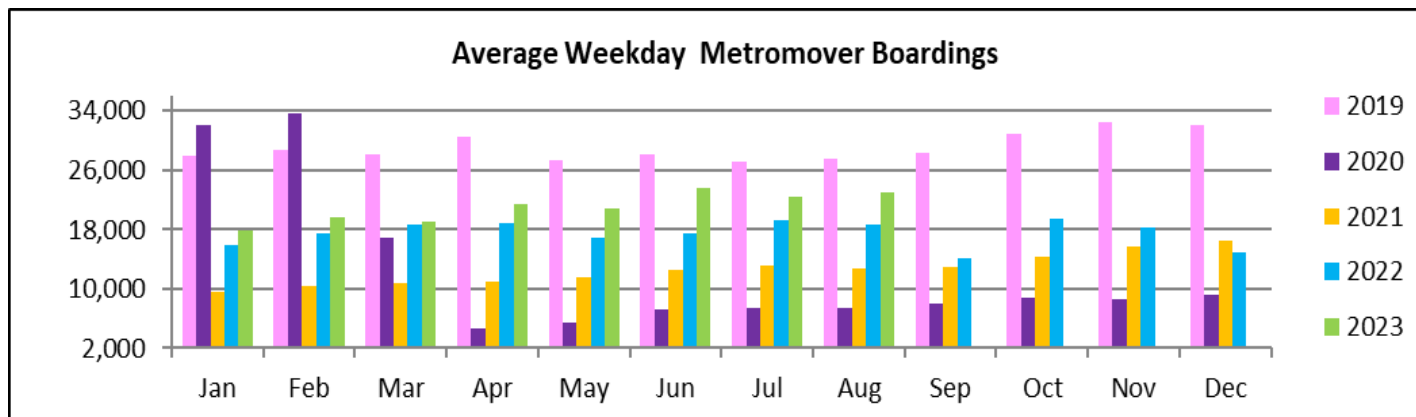
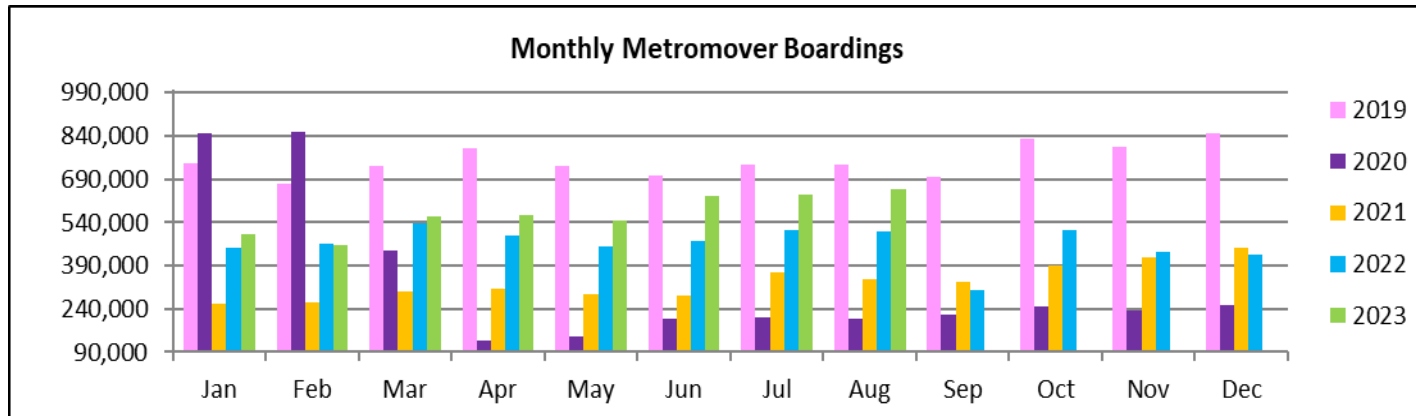
	Average Weekday	Average Weekday	Percent Change	Average Saturday	Average Saturday	Percent Change	Average Sunday	Average Sunday	Percent Change	Total Monthly	Total Monthly	Percent Change
STATIONS	Aug-23	Aug-22	23 vs 22	Aug-23	Aug-22	23 vs 22	Aug-23	Aug-22	23 vs 22	Aug-23	Aug-22	23 vs 22
School Board	1,198	814	47.1%	826	543	52.1%	859	549	56.3%	34,280	23,099	48.4%
Omni	1,887	1,506	25.4%	1,360	1,103	23.3%	1,233	952	29.6%	53,782	42,847	25.5%
Museum Park	376	311	21.0%	614	434	41.4%	485	358	35.4%	13,040	7,348	77.5%
Eleventh Street	266	230	15.4%	319	239	33.1%	196	154	26.9%	8,164	6,866	18.9%
Park West	752	479	56.9%	612	403	51.6%	544	308	76.7%	21,914	13,384	63.7%
Freedom Tower (1)												
Government Center	2,528	2,417	4.6%	1,759	1,739	1.2%	1,542	1,388	11.1%	71,346	57,730	23.6%
Miami Avenue	373	287	30.0%	259	234	10.6%	237	241	-1.7%	10,570	7,742	36.5%
Third Street	477	279	70.9%	365	225	62.2%	334	203	64.2%	13,768	8,135	69.2%
Knight Center	608	535	13.7%	368	367	0.3%	295	319	-7.5%	16,642	15,048	10.6%
Bayfront Park	2,213	1,841	20.2%	1,611	1,392	15.7%	1,489	1,165	27.8%	63,302	52,582	20.4%
First Street	1,299	842	54.1%	1,047	725	44.4%	941	654	43.9%	37,817	20,985	80.2%
College/Bayside	1,369	1,326	3.3%	1,229	1,207	1.8%	1,168	974	19.9%	41,082	26,783	53.4%
College North	986	706	39.6%	633	484	31.0%	535	363	47.5%	27,348	18,926	44.5%
Wilkie D. Ferguson	1,482	1,185	25.1%	1,025	1,286	-20.3%	876	788	11.2%	41,690	35,548	17.3%
Riverwalk	712	187	281.8%	499	182	174.4%	456	179	155.6%	20,201	5,731	252.5%
Fifth Street	516	376	37.2%	328	288	13.8%	291	198	47.0%	14,341	10,593	35.4%
Eighth Street	1,682	1,764	-4.6%	1,498	1,564	-4.3%	1,311	1,330	-1.5%	49,928	52,150	-4.3%
Tenth Street	1,023	706	44.9%	764	582	31.3%	619	575	7.7%	29,053	20,857	39.3%
Brickell	2,185	1,983	10.2%	1,421	1,585	-10.3%	1,293	1,362	-5.1%	61,118	57,390	6.5%
Financial District	1,030	906	13.7%	538	535	0.5%	510	409	24.6%	27,881	24,615	13.3%
TOTAL	22,962	18,681	22.9%	17,070	15,116	12.9%	15,213	12,469	22.0%	657,267	508,359	29.3%

(1) Freedom Tower Station was closed for construction.

METROMOVER CUMULATIVE PERCENTAGE RIDERSHIP SHARE



TOTAL MONTHLY AND AVERAGE WEEKDAY RIDERSHIP YEAR OVER YEAR COMPARISON CHARTS – METROMOVER

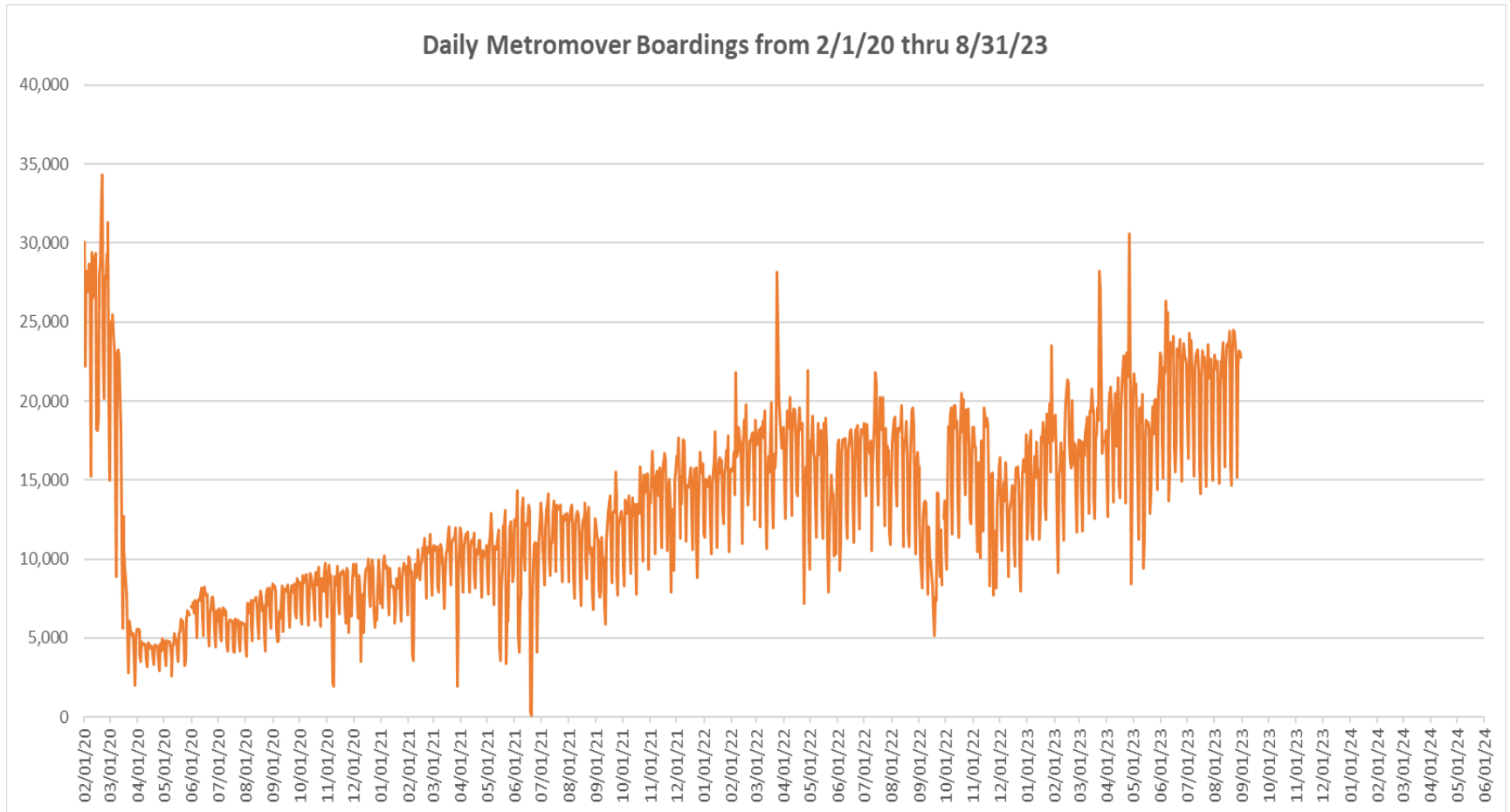


**“TOP 5 / BOTTOM 5” MOVER STATIONS AVERAGE WEEKDAY RIDERSHIP PERFORMANCE
YEAR OVER YEAR COMPARISONS**

Station	Aug-23	Aug-22	Absolute Delta (1)	Percent Delta
Riverwalk	712	187	526	281.8%
First Street	1,299	842	456	54.1%
School Board	1,198	814	383	47.1%
Omni	1,887	1,506	382	25.4%
Bayfront Park	2,213	1,841	372	20.2%
Eighth Street	1,682	1,764	-82	-4.6%
Eleventh Street	266	230	35	15.4%
College/Bayside	1,369	1,326	44	3.3%
Museum Park	376	311	65	21.0%
Knight Center	608	535	73	13.7%

(1) Averages rounded to the nearest boarding.

DAILY METROMOVER RIDERSHIP SINCE FEBRUARY 1, 2020



- (1) National Emergency was declared on 3/13/20 as a result of the SARS-CoV-2 pandemic.
- (2) There was no Metrobus, Metrorail and Metromover service on 5/31/20, as a safety precaution, and no service for any of the four modes on 9/28/22 as a result of Hurricane Ian..
- (3) The dip at the start of the second week of November 2020 is due to Hurricane Eta; these are *raw data* from the UTA contractor APC system. Other more recent dips are due to various station closures (mostly on weekends) for system maintenance purposes.
- (4) Periodic (weekly) variations are prominent, since weekday ridership is almost always significantly higher than weekend or holiday ridership.

Special Transportation Services

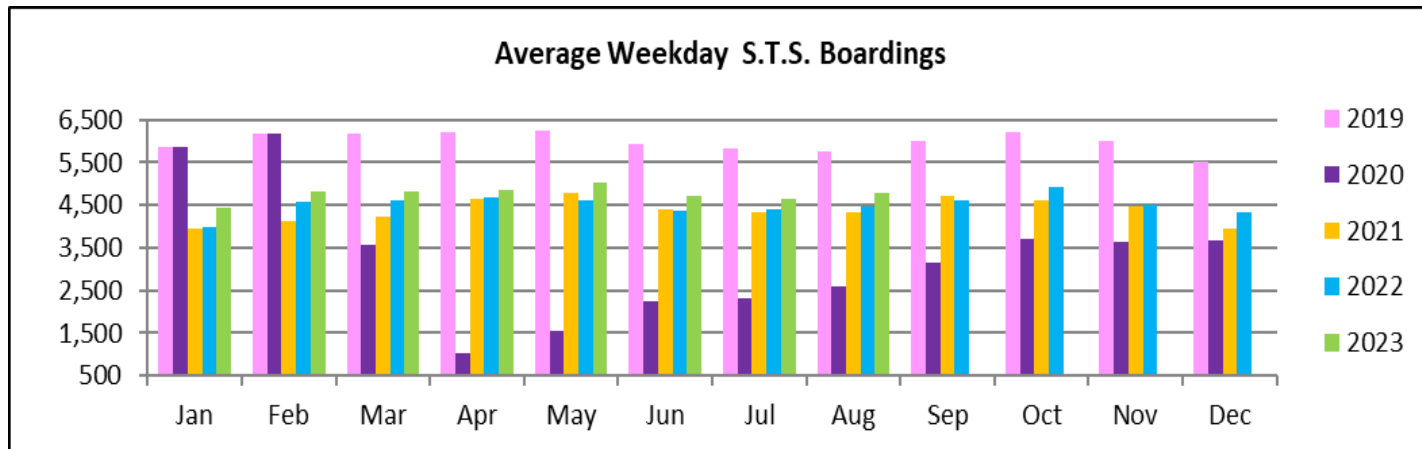
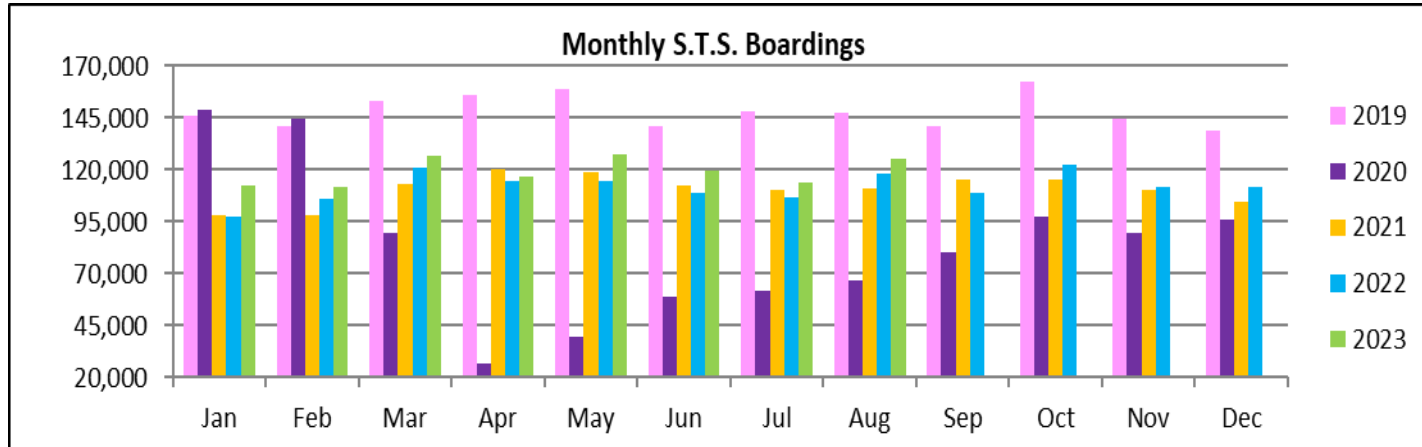


STS MONTHLY AND AVERAGE DAILY BOARDINGS
August 2023

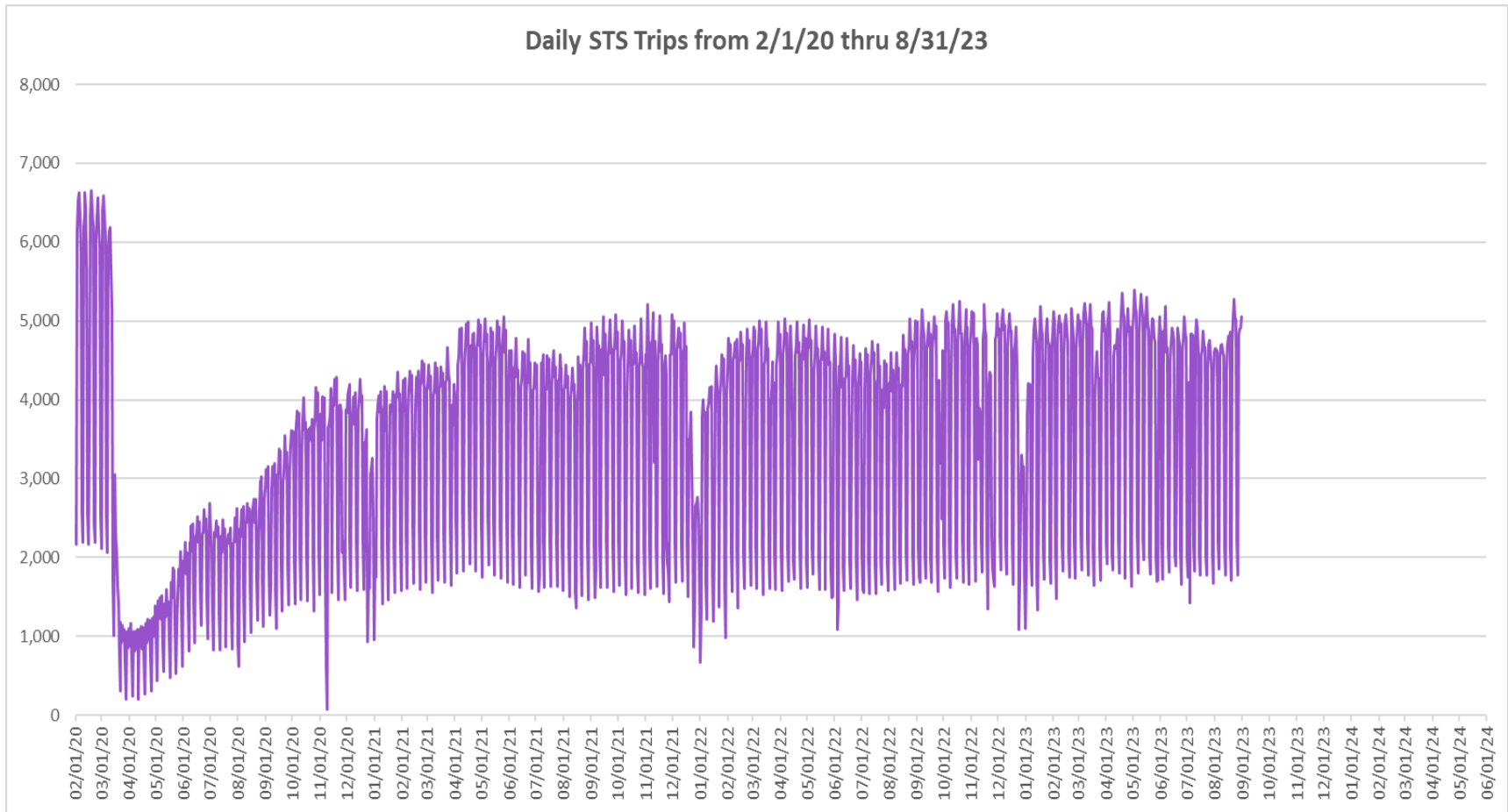
Measure	Timeline	Ambulatory	Wheelchair	Total Clients (*)
Average Weekday	Aug-23	3,969	806	4,775
Average Saturday	Aug-23	1,788	356	2,145
Average Sunday	Aug-23	1,468	311	1,779
Total Monthly	Aug-23	104,309	21,201	125,510
Average Weekday	Aug-22	3,704	780	4,484
Average Saturday	Aug-22	1,690	359	2,049
Average Sunday	Aug-22	1,360	295	1,655
Total Monthly	Aug-22	97,394	20,547	117,941
Average Weekday	Aug-21	3,521	815	4,336
Average Saturday	Aug-21	1,595	389	1,984
Average Sunday	Aug-21	1,253	235	1,488
Total Monthly	Aug-21	90,109	20,657	110,766
% Change Current vs. August 2022 Weekday		7.1%	3.4%	6.5%
% Change Current vs. August 2022 Saturday		5.8%	-0.8%	4.7%
% Change Current vs. August 2022 Sunday		7.9%	5.3%	7.5%
% Change Current vs. August 2022 Month Total		7.1%	3.2%	6.4%
% Change Current vs. August 2021 Weekday		12.7%	-1.1%	10.1%
% Change Current vs. August 2021 Saturday		12.1%	-8.3%	8.1%
% Change Current vs. August 2021 Sunday		17.1%	32.4%	19.5%
% Change Current vs. August 2021 Month Total		15.8%	2.6%	13.3%

(*) Trip count data provided by STS contractor.

TOTAL MONTHLY AND AVERAGE WEEKDAY RIDERSHIP YEAR OVER YEAR COMPARISON CHARTS – SPECIAL TRANSPORTATION SERVICES (S.T.S.)

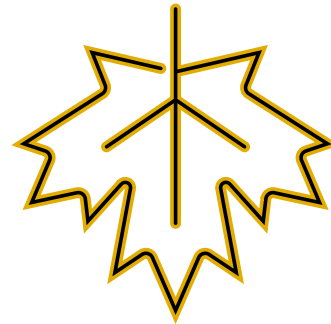
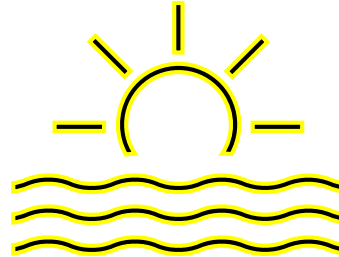
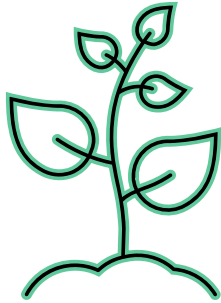


DAILY STS RIDERSHIP SINCE FEBRUARY 1, 2020

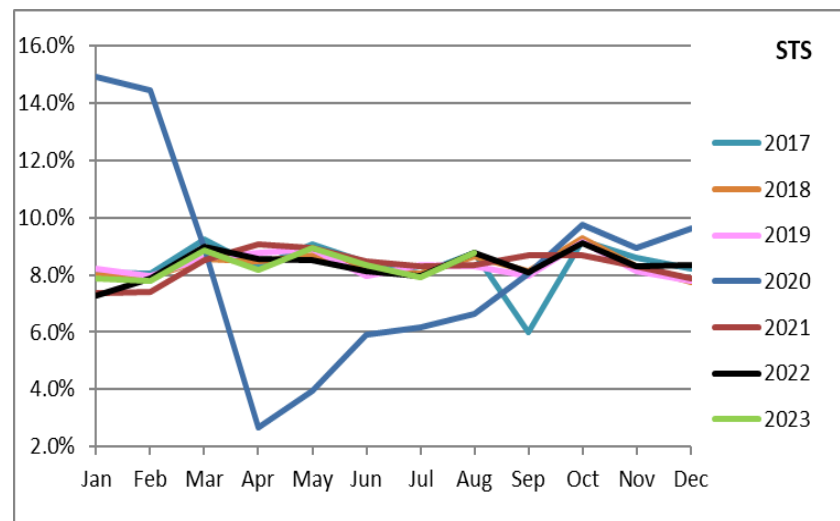
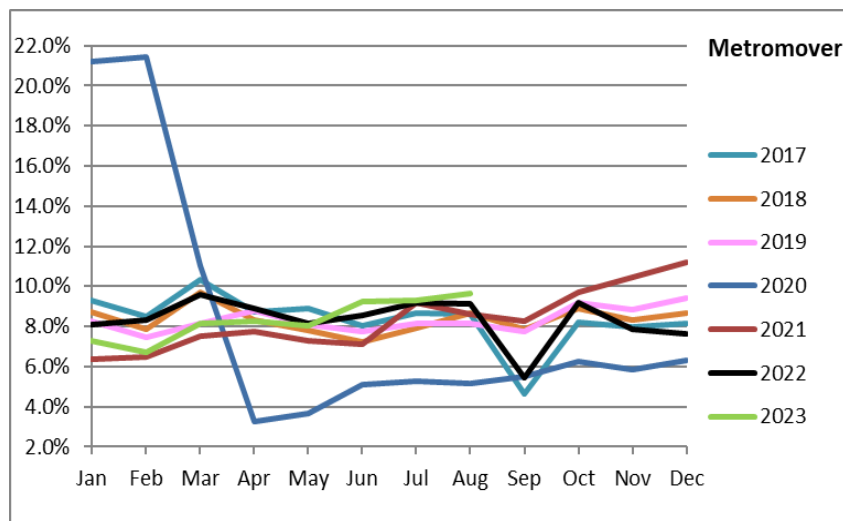
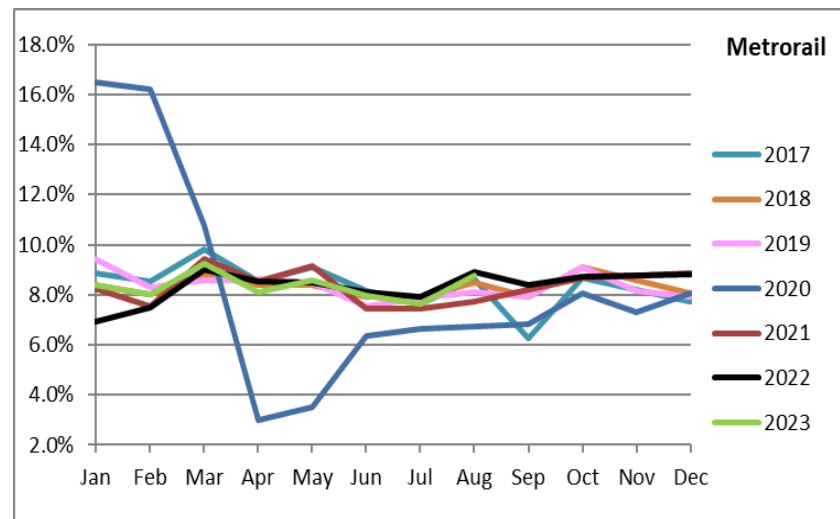
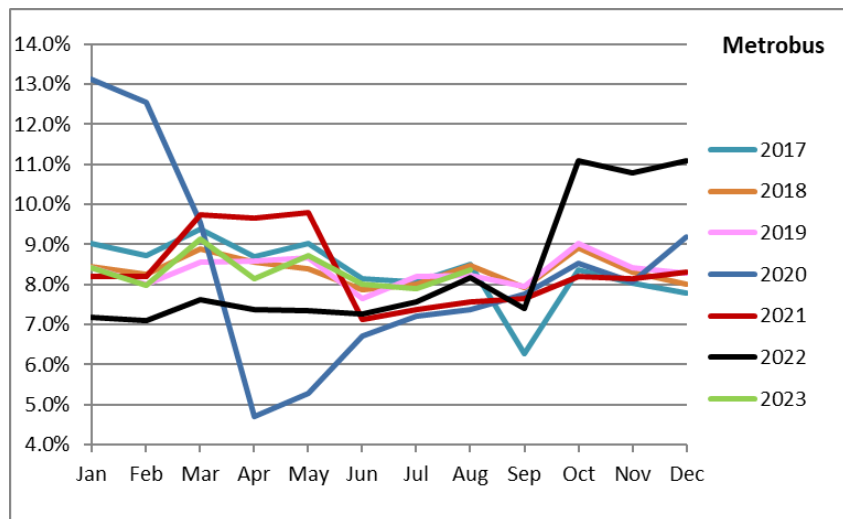


- (1) National Emergency was declared on 3/13/20 as a result of the SARS-CoV-2 pandemic.
- (2) There was no service (for any of the four modes) on 9/28/22 as a result of Hurricane Ian.
- (3) The dip at the start of the second week of November 2020 is due to Hurricane Eta.
- (4) Periodic (weekly) variations are prominent, since weekday ridership is almost always significantly higher than weekend or holiday ridership.

Ridership Seasonality



RIDERSHIP SEASONALITY – PERCENT RIDERSHIP SHARE BY MONTH AND CALENDAR YEAR FOR EACH MODE



Note: the prominent dips seen in the fall of 2017 and beginning in the spring of 2020 are due to Hurricane Irma and the SARS-CoV-2 pandemic, respectively. Reductions in Bus and Rail ridership share seen beginning in June 2021 are due to reinstatement of fares as well changes in reporting tools and datasets, as discussed earlier in this report. The prominent peaks on Metrobus seen beginning October 2022 are due from a changeover from farebox counts to ridership obtained from new automatic passenger counter (APC) technology.