



TRANSPORTATION AND PUBLIC WORKS

RIDERSHIP TECHNICAL REPORT

Division of Performance and Materials Management



September 2023

Table of Contents

<i>Table of Contents</i>	2-3
All Modes Overview	4
Total Monthly Weekday, Saturday and Sunday Monthly Boardings By Mode	5
Average Weekday, Saturday and Sunday Boardings by Mode	6
Metrobus Total Monthly Ridership Comparisons by Fiscal Year	7
Metrorail Total Monthly Ridership Comparisons by Fiscal Year	8
Metromover Total Monthly Ridership Comparisons by Fiscal Year	9
STS Total Monthly Ridership Comparisons by Fiscal Year	10
All-Modes Combined Total Monthly Ridership Comparisons By Fiscal Year	11
All Modes Combined Total Monthly and Average Weekday Ridership – Year over Year Comparison Charts	12
Average Weekday Ridership – Modal Splits	13
Daily Ridership for All Modes Combined since 2/1/20	14
 Metrobus	 15
Metrobus Average Weekday Boardings by Route	16-18
Metrobus Average Saturday Boardings by Route	19-20
Metrobus Average Sunday Boardings by Route	21-22
Metrobus Monthly Total Boardings by Route	23-25
Year-over-Year Bus Ridership by Route Service Type	26-27
Bus Routes as Ranked by Percentage of Average Weekday Ridership	28
Metrobus Cumulative Percentage Average Weekday Ridership Share by Route (Top 75%)	29
Total Monthly and Average Weekday Bus Ridership – Year over Year Comparison Charts	30
Bus “Top 5 / Bottom 5” Routes Average Weekday Ridership Performance	31
Daily Metrobus Ridership since 2/1/20	32
Metrobus Parking Patronage Summary	33

Table of Contents (continued)

Metrorail	34
Metrorail Average Weekday Boardings by Station	35
Metrorail Average Saturday Boardings by Station	36
Metrorail Average Sunday Boardings by Station	37
Metrorail Total Monthly Boardings by Station	38
Metrorail Cumulative Percentage Average Weekday Ridership Share	39
Total Monthly and Average Weekday Rail Ridership – Year over Year Comparison Charts	40
“Top 5 / Bottom 5” Stations Average Weekday Ridership Performance	41
Daily Metrorail Ridership since 2/1/20	42
Metrorail Parking Patronage Summary	43
 Metromover	 44
Monthly and Average Daily Mover Boardings by Station	45
Metromover Cumulative Percentage Average Weekday Ridership Share	46
Total Monthly and Average Weekday Mover Ridership – Year over Year Comparison Charts	47
“Top 5 / Bottom 5” Stations Average Weekday Ridership Performance	48
Daily Metromover Ridership since 2/1/20	49
 Special Transportation Services (STS)	 50
STS Monthly and Average Daily Boardings	51
Total Monthly and Average Weekday STS Ridership – Year over Year Comparison Charts	52
Daily STS Ridership since 2/1/20	53
 Ridership Seasonality	 54
Ridership Seasonality – Percent Ridership Share by Month and Calendar year for Each Mode	55

All Modes Overview



TOTAL MONTHLY WEEKDAY, SATURDAY AND SUNDAY BOARDINGS BY MODE
September 2023

TRAVEL MODE	MONTH'S TOTAL WEEKDAYS RIDERSHIP	MONTH'S TOTAL SATURDAYS RIDERSHIP	MONTH'S TOTAL SUNDAYS RIDERSHIP	TOTAL MONTHLY RIDERSHIP	% CHANGE vs Sep 2022 TOTAL MONTH RIDERSHIP
METROBUS (1), (2)	3,592,321	524,449	408,656	4,525,426	44.9%
METRORAIL (3)	978,337	93,813	74,714	1,146,864	13.3%
METROMOVER (4)	457,122	82,949	70,739	610,810	100.1%
STS PARATRANSIT (5)	101,940	10,953	9,172	122,065	12.2%
TOTAL	5,129,720	712,164	563,281	6,405,165	40.8%

- (1) Metrobus fares resumed on June 1, 2021, following a 14-month period of fare-free rides as a result of the SARS-CoV-2 pandemic. The NextFare System farebox data replaced the bus automatic passenger counter data as ridership data of record starting on that date.
- (2) Bus ridership reporting through automatic passenger counters coupled with a new enhanced sensor system resumed on October 1, 2022.
- (3) Metrorail fares resumed on June 1, 2021, following a 14-month period of fare-free rides as a result of the SARS-CoV-2 pandemic. The NextFare System faregate data replaced the video data as ridership data of record starting on that date.
- (4) Beginning March 13, 2020 (day of National Emergency Declaration due to SARS-CoV-2 pandemic), only raw data from Metromover automatic passenger counters is reported; no estimates are performed after March 13, 2020.
- (5) Several stations reported no data in September 2022, due to construction and other work, whence the large year-over-year increase.
- (6) Paratransit ridership data as reported by the contractor.

AVERAGE WEEKDAY, SATURDAY AND SUNDAY BOARDINGS BY MODE
September 2023

Travel Mode	Average (*) Weekday	Average Saturday	Average Sunday	% Change Sep 2022 Weekday	% Change Sep 2022 Saturday	% Change Sep 2022 Sunday
METROBUS	179,668	104,890	81,731	42.6%	36.0%	37.8%
METRORAIL	48,917	18,763	14,113	13.7%	-2.1%	-2.8%
METROMOVER (**)	22,856	16,590	13,813	61.8%	43.9%	44.4%
STS PARATRANSIT	5,097	2,191	1,834	10.5%	7.7%	8.9%
Totals	256,538	142,433	111,491	36.6%	29.6%	31.0%

(*) Average ridership is calculated and published only for those days and stations with nontrivial amounts of reported data.

(**) Several stations reported no data in September 2022, due to construction and other work, whence the large year-over-year increase.

METROBUS TOTAL MONTHLY RIDERSHIP COMPARISONS BY FISCAL YEAR

Bus Month	FY 19	FY 20	Variance 19 to 20	FY 21	FY 22	FY 23	Variance 22 to 23	Variance 21 to 22	Variance 19 to 23	Variance 19 to 22
Oct	4,554,886	4,507,012	-1.1%	2,805,139	3,081,157	4,679,725	51.9%	9.8%	2.7%	-32.4%
Nov	4,245,535	4,197,225	-1.1%	2,651,290	3,056,726	4,549,666	48.8%	15.3%	7.2%	-28.0%
Dec	4,081,581	4,126,990	1.1%	3,022,530	3,123,883	4,677,460	49.7%	3.4%	14.6%	-23.5%
Jan	4,195,911	4,316,998	2.9%	3,082,746	3,029,055	4,785,128	58.0%	-1.7%	14.0%	-27.8%
Feb	3,994,019	4,123,083	3.2%	3,076,966	2,995,789	4,526,317	51.1%	-2.6%	13.3%	-25.0%
Mar	4,266,768	3,136,162	-26.5%	3,660,639	3,218,562	5,183,872	61.1%	-12.1%	21.5%	-24.6%
Apr	4,291,135	1,544,316	-64.0%	3,625,048	3,105,797	4,618,302	48.7%	-14.3%	7.6%	-27.6%
May	4,330,922	1,734,609	-59.9%	3,683,343	3,097,574	4,953,197	59.9%	-15.9%	14.4%	-28.5%
Jun	3,823,863	2,210,725	-42.2%	2,672,570	3,064,059	4,545,050	48.3%	14.6%	18.9%	-19.9%
Jul	4,094,906	2,366,749	-42.2%	2,769,907	3,189,994	4,484,458	40.6%	15.2%	9.5%	-22.1%
Aug	4,109,613	2,422,014	-41.1%	2,843,552	3,442,006	4,756,063	38.2%	21.0%	15.7%	-16.2%
Sep	3,971,220	2,546,923	-35.9%	2,877,110	3,123,572	4,525,426	44.9%	8.6%	14.0%	-21.3%
FY Total	49,960,359	37,232,806	-25.5%	36,770,840	37,528,174	56,284,664	50.0%	2.1%	12.7%	-24.9%

METRORAIL TOTAL MONTHLY RIDERSHIP COMPARISONS BY FISCAL YEAR

Rail Month	FY 19	FY 20	Variance 19 to 20	FY 21	FY 22	FY 23	Variance 22 to 23	Variance 21 to 22	Variance 19 to 23	Variance 19 to 22
Oct	1,757,225	1,643,166	-6.5%	769,525	844,383	1,053,191	24.7%	9.7%	-40.1%	-51.9%
Nov	1,656,929	1,469,448	-11.3%	699,492	850,881	1,055,066	24.0%	21.6%	-36.3%	-48.6%
Dec	1,553,804	1,433,928	-7.7%	769,194	860,436	1,063,096	23.6%	11.9%	-31.6%	-44.6%
Jan	1,708,695	1,576,340	-7.7%	799,119	832,924	1,127,340	35.3%	4.2%	-34.0%	-51.3%
Feb	1,501,458	1,549,118	3.2%	730,792	905,162	1,072,791	18.5%	23.9%	-28.6%	-39.7%
Mar	1,554,851	1,027,319	-33.9%	917,097	1,084,978	1,239,336	14.2%	18.3%	-20.3%	-30.2%
Apr	1,559,446	287,803	-81.5%	827,414	1,027,139	1,087,816	5.9%	24.1%	-30.2%	-34.1%
May	1,531,597	337,696	-78.0%	887,111	1,023,322	1,151,819	12.6%	15.4%	-24.8%	-33.2%
Jun	1,359,966	608,758	-55.2%	723,469	975,477	1,066,861	9.4%	34.8%	-21.6%	-28.3%
Jul	1,419,158	632,964	-55.4%	722,159	953,331	1,022,937	7.3%	32.0%	-27.9%	-32.8%
Aug	1,463,646	641,275	-56.2%	749,578	1,076,490	1,174,138	9.1%	43.6%	-19.8%	-26.5%
Sep	1,427,726	654,244	-54.2%	795,749	1,012,331	1,146,864	13.3%	27.2%	-19.7%	-29.1%
FY Total	18,494,501	11,862,059	-35.9%	9,390,699	11,446,854	13,261,255	15.9%	21.9%	-28.3%	-38.1%

METROMOVER TOTAL MONTHLY RIDERSHIP COMPARISONS BY FISCAL YEAR

Mover Month	FY 19	FY 20	Variance 19 to 20	FY 21	FY 22	FY 23	Variance 22 to 23	Variance 21 to 22	Variance 19 to 23	Variance 19 to 22
Oct	790,533	831,234	5.1%	250,044	389,065	514,308	32.2%	55.6%	-34.9%	-50.8%
Nov	735,198	799,632	8.8%	232,422	418,929	439,150	4.8%	80.2%	-40.3%	-43.0%
Dec	767,239	849,832	10.8%	251,019	450,320	426,073	-5.4%	79.4%	-44.5%	-41.3%
Jan	746,728	847,773	13.5%	255,968	451,566	498,566	10.4%	76.4%	-33.2%	-39.5%
Feb	675,160	855,398	26.7%	260,332	465,968	459,264	-1.4%	79.0%	-32.0%	-31.0%
Mar	737,814	441,200	-40.2%	302,502	535,857	558,396	4.2%	77.1%	-24.3%	-27.4%
Apr	795,696	130,549	-83.6%	310,772	495,982	565,943	14.1%	59.6%	-28.9%	-37.7%
May	734,645	146,454	-80.1%	292,922	455,120	547,948	20.4%	55.4%	-25.4%	-38.0%
Jun	701,318	203,637	-71.0%	286,145	477,286	632,423	32.5%	66.8%	-9.8%	-31.9%
Jul	739,814	210,596	-71.5%	368,847	512,094	635,954	24.2%	38.8%	-14.0%	-30.8%
Aug	739,785	205,995	-72.2%	344,319	508,359	657,267	29.3%	47.6%	-11.2%	-31.3%
Sep	699,879	219,696	-68.6%	331,915	305,185	610,810	100.1%	-8.1%	-12.7%	-56.4%
FY Total	8,863,809	5,741,996	-35.2%	3,487,207	5,465,731	6,546,102	19.8%	56.7%	-26.1%	-38.3%

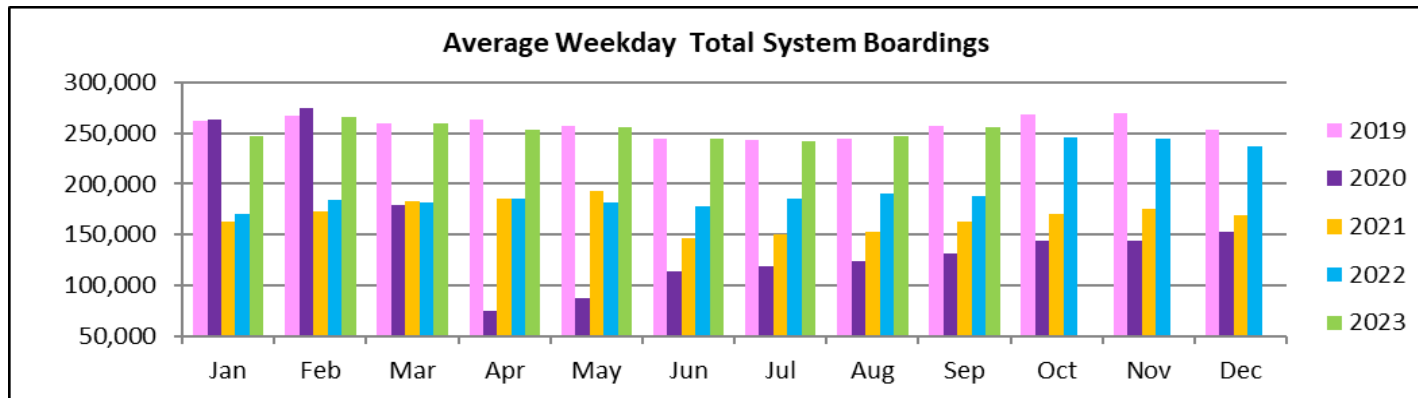
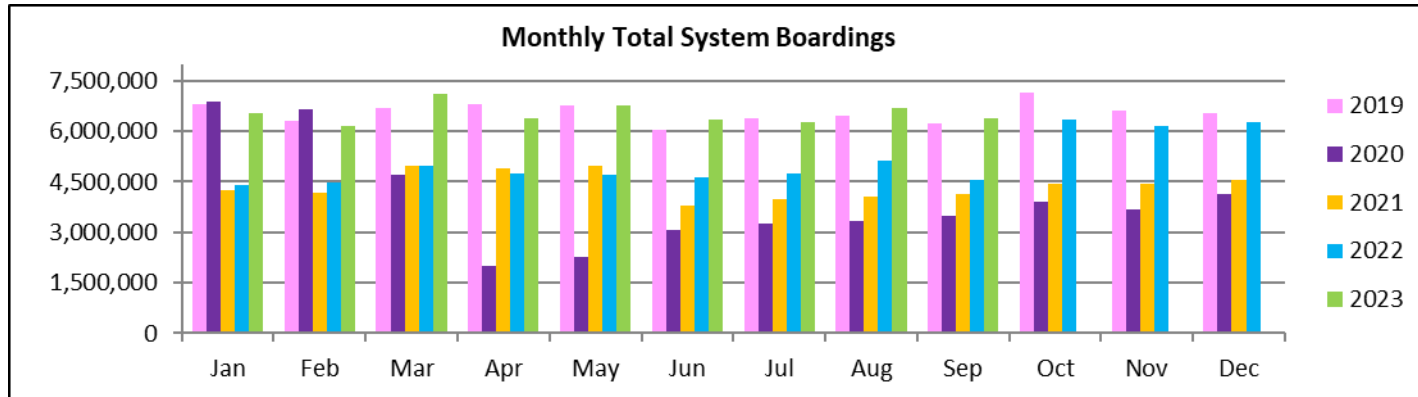
SPECIAL TRANSPORTATION SERVICES (STS) TOTAL MONTHLY RIDERSHIP COMPARISONS BY FISCAL YEAR

STS Month	FY 19	FY 20	Variance 19 to 20	FY 21	FY 22	FY 23	Variance 22 to 23	Variance 21 to 22	Variance 19 to 23	Variance 19 to 22
Oct	162,564	162,704	0.1%	97,388	115,122	122,189	6.1%	18.2%	-24.8%	-29.2%
Nov	145,653	144,366	-0.9%	89,387	110,289	111,578	1.2%	23.4%	-23.4%	-24.3%
Dec	136,110	138,642	1.9%	96,366	104,496	112,019	7.2%	8.4%	-17.7%	-23.2%
Jan	146,268	149,114	1.9%	97,928	97,541	112,632	15.5%	-0.4%	-23.0%	-33.3%
Feb	141,396	144,392	2.1%	98,285	105,706	111,748	5.7%	7.6%	-21.0%	-25.2%
Mar	153,191	89,634	-41.5%	112,930	120,718	126,819	5.1%	6.9%	-17.2%	-21.2%
Apr	155,808	26,877	-82.7%	120,122	114,912	116,882	1.7%	-4.3%	-25.0%	-26.2%
May	158,665	39,654	-75.0%	118,636	114,505	127,782	11.6%	-3.5%	-19.5%	-27.8%
Jun	141,320	59,093	-58.2%	112,397	109,054	119,527	9.6%	-3.0%	-15.4%	-22.8%
Jul	148,232	61,765	-58.3%	110,059	107,188	113,623	6.0%	-2.6%	-23.3%	-27.7%
Aug	147,331	66,563	-54.8%	110,766	117,941	125,510	6.4%	6.5%	-14.8%	-19.9%
Sep	141,387	80,346	-43.2%	115,406	108,788	122,065	12.2%	-5.7%	-13.7%	-23.1%
FY Total	1,777,925	1,163,150	-34.6%	1,279,670	1,326,260	1,422,374	7.2%	3.6%	-20.0%	-25.4%

ALL-MODES COMBINED TOTAL MONTHLY RIDERSHIP COMPARISONS BY FISCAL YEAR

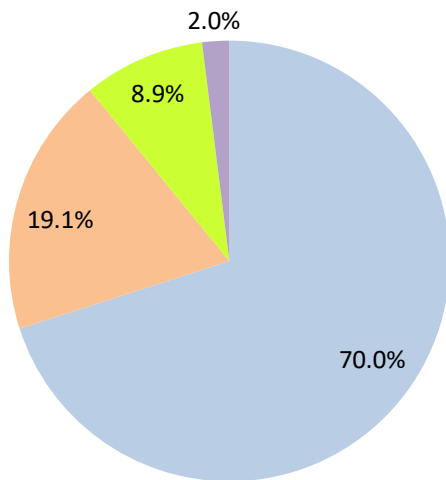
All Modes											
Month	FY 19	FY 20	FY 21	FY 22	FY 23	19 TO 20	20 TO 21	21 TO 22	22 TO 23	19 TO 23	19 TO 22
Oct	7,265,208	7,144,116	3,922,096	4,429,727	6,369,413	-1.7%	-45.1%	12.9%	43.8%	-12.3%	-39.0%
Nov	6,783,315	6,610,671	3,672,591	4,436,825	6,155,460	-2.5%	-44.4%	20.8%	38.7%	-9.3%	-34.6%
Dec	6,538,734	6,549,392	4,139,109	4,539,135	6,278,648	0.2%	-36.8%	9.7%	38.3%	-4.0%	-30.6%
Jan	6,797,602	6,890,225	4,235,761	4,411,086	6,523,666	1.4%	-38.5%	4.1%	47.9%	-4.0%	-35.1%
Feb	6,312,033	6,671,991	4,166,375	4,472,625	6,170,120	5.7%	-37.6%	7.4%	38.0%	-2.2%	-29.1%
Mar	6,712,624	4,694,315	4,993,168	4,960,115	7,108,423	-30.1%	6.4%	-0.7%	43.3%	5.9%	-26.1%
Apr	6,802,085	1,989,545	4,883,356	4,743,830	6,388,943	-70.8%	145.5%	-2.9%	34.7%	-6.1%	-30.3%
May	6,755,829	2,258,413	4,982,012	4,690,521	6,780,746	-66.6%	120.6%	-5.9%	44.6%	0.4%	-30.6%
Jun	6,026,467	3,082,213	3,794,581	4,625,876	6,363,861	-48.9%	23.1%	21.9%	37.6%	5.6%	-23.2%
Jul	6,402,110	3,272,074	3,970,972	4,762,607	6,256,972	-48.9%	21.4%	19.9%	31.4%	-2.3%	-25.6%
Aug	6,460,375	3,335,847	4,048,215	5,144,796	6,712,978	-48.4%	21.4%	27.1%	30.5%	3.9%	-20.4%
Sep	6,240,212	3,501,209	4,120,180	4,549,876	6,405,165	-43.9%	17.7%	10.4%	40.8%	2.6%	-27.1%
FY Total	79,096,594	56,000,011	50,928,416	55,767,019	77,514,395	-29.2%	-9.1%	9.5%	39.0%	-2.0%	-29.5%

TOTAL MONTHLY AND AVERAGE WEEKDAY RIDERSHIP YEAR OVER YEAR COMPARISON CHARTS – ALL MODES COMBINED



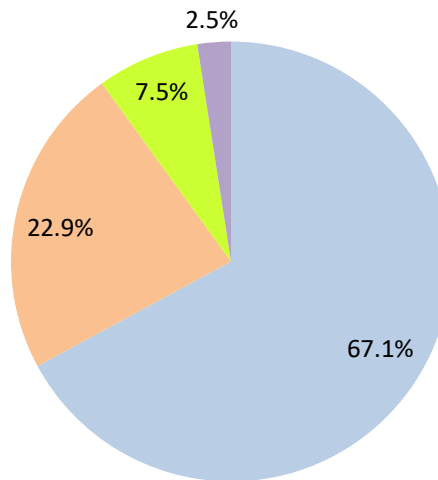
AVERAGE WEEKDAY RIDERSHIP - MODAL SPLITS

September
2023



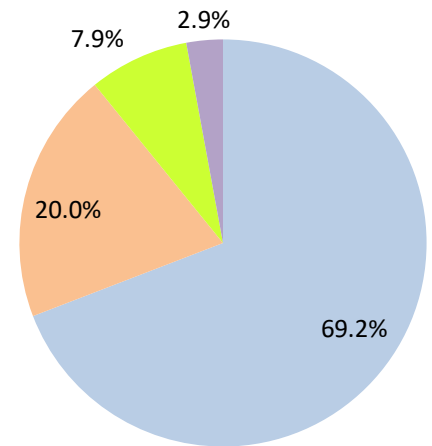
boardings

September
2022



boardings

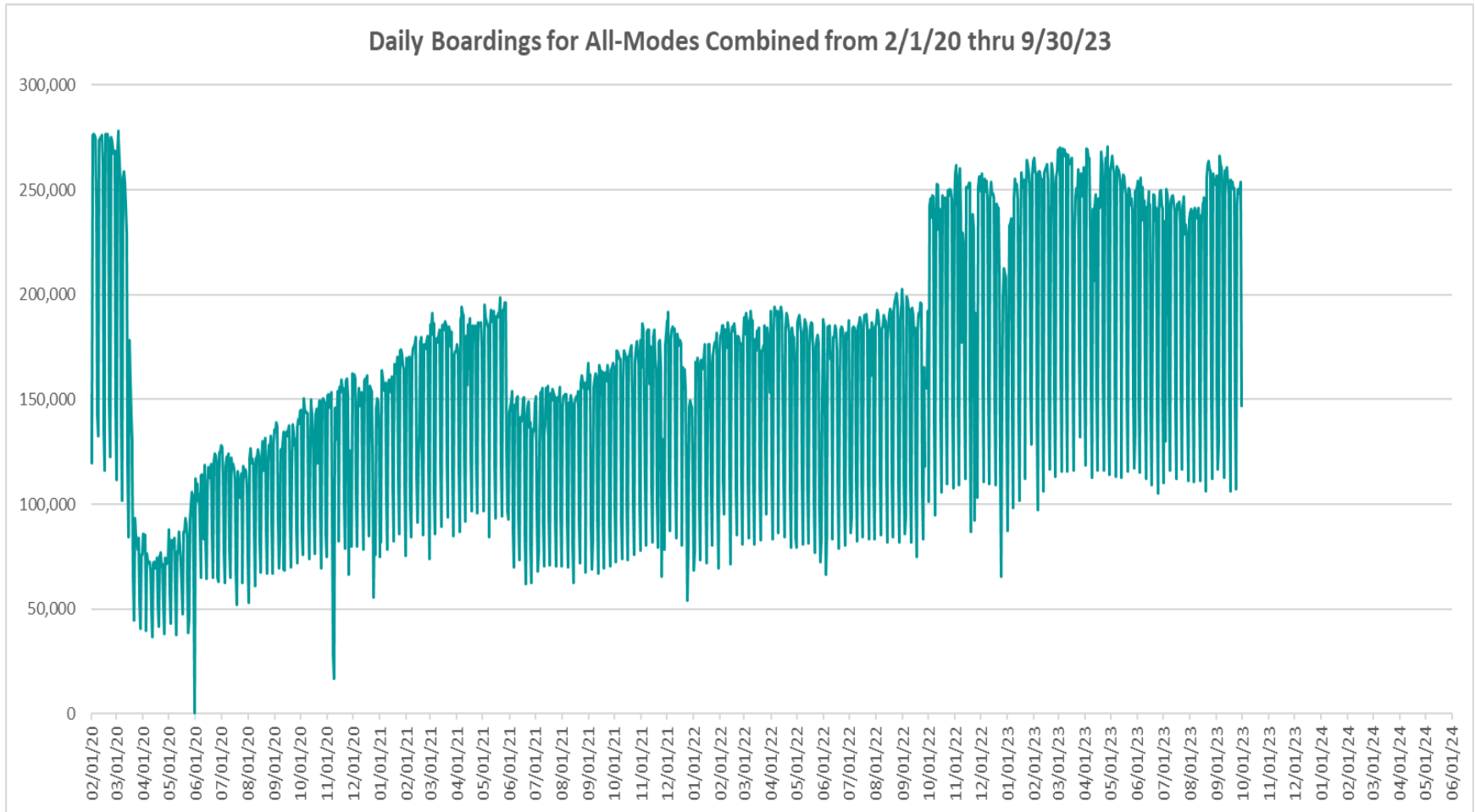
September
2021



boardings



DAILY RIDERSHIP FOR ALL MODES COMBINED SINCE FEBRUARY 1, 2020



- (1) National Emergency was declared on 3/13/20 as a result of the SARS-CoV-2 pandemic.
- (2) There was no Metrobus, Metrorail and Metromover service on 5/31/20, as a safety precaution, and no service for any of the four modes on 9/28/22 as a result of Hurricane Ian..
- (3) The dip at the start of the second week of November 2020 is due to Hurricane Eta.
- (4) The reduction seen beginning 6/1/21 is partly due to the resumption of fares for bus and rail, and partly the result of having resumed reporting Cubic farebox data rather than bus APC counts, as well as Cubic rail faregate counts instead of video camera counts on that date. The jump seen at the start of October 2022 is due to the return to APC bus ridership counts reporting on 10/1/22.
- (5) Periodic (weekly) variations are prominent, since weekday ridership is almost always significantly higher than weekend or holiday ridership.

Metrobus



METROBUS AVERAGE WEEKDAY BOARDINGS BY ROUTE (†)

Route	Average Weekday	Average Weekday	Percent Change	Average Weekday	Percent Change	Average Weekday	Percent Change	Average Weekday	Percent Change
weekdays	Sep-23	Sep-22	YOY	Feb-20	Current vs Feb-20	Aug-23	MOM	Sep-21	YO2Y
1 (*)	222	169	31.1%	184	20.6%	213	3.9%	181	22.7%
2	2,980	1,874	59.0%	3,102	-3.9%	2,777	7.3%	2,088	42.7%
3	5,272	3,792	39.0%	5,137	2.6%	5,093	3.5%	4,070	29.6%
7	3,948	2,986	32.2%	3,501	12.7%	3,771	4.7%	2,452	61.0%
8	4,593	3,479	32.0%	3,909	17.5%	4,459	3.0%	3,508	30.9%
9	6,462	4,270	51.3%	5,528	16.9%	6,151	5.0%	4,725	36.7%
10	2,440	1,681	45.1%	2,482	-1.7%	2,331	4.7%	1,467	66.3%
11	9,340	6,364	46.7%	7,292	28.1%	9,049	3.2%	6,404	45.8%
12	2,983	2,018	47.8%	2,779	7.3%	2,711	10.0%	1,762	69.3%
16	1,959	1,438	36.3%	1,862	5.2%	1,879	4.2%	1,124	74.3%
17	4,026	2,632	53.0%	3,878	3.8%	3,851	4.6%	2,342	71.9%
19	1,855	1,018	82.1%	1,542	20.2%	1,561	18.8%	907	104.5%
21	2,048	1,262	62.3%	1,817	12.7%	1,936	5.8%	1,149	78.2%
22	4,434	2,892	53.3%	3,640	21.8%	4,235	4.7%	2,340	89.5%
24 - Coral Way Limited	2,161	1,628	32.8%	1,340	61.3%	2,164	-0.1%	843	156.2%
26	1,825	1,355	34.7%	1,778	2.7%	1,726	5.7%	1,320	38.2%
27	6,945	4,848	43.2%	6,972	-0.4%	6,703	3.6%	4,896	41.9%
29 (*)	521	397	31.2%	534	-2.5%	490	6.4%	289	80.2%
31 - BUSWAY LOCAL		755		1,089				648	
32	2,647	1,936	36.7%	2,390	10.8%	2,524	4.9%	1,471	80.0%
33	1,826	1,273	43.5%	1,687	8.2%	1,779	2.6%	1,005	81.6%
34 TRANSITWAY EXPRESS	1,569	1,006	55.9%	2,008	-21.9%	1,437	9.2%	528	197.2%
35	2,986	1,818	64.2%	2,421	23.3%	2,723	9.6%	1,540	93.8%
36	2,592	1,989	30.3%	2,536	2.2%	2,592	0.0%	1,659	56.2%
37	3,385	2,385	42.0%	3,273	3.4%	3,348	1.1%	2,542	33.2%
38 TRANSITWAY MAX	4,529	4,195	8.0%	6,361	-28.8%	4,474	1.2%	4,051	11.8%
39 TRANSITWAY EXPRESS	674			893	-24.4%	544	24.0%	156	332.3%
40	2,258	1,541	46.5%	1,772	27.4%	2,199	2.7%	1,193	89.2%
42	1,012	689	46.7%	820	23.3%	943	7.2%	626	61.5%
46 - LIBERTY CITY CONN. (*)	19	35	-45.2%	41	-52.6%	18	6.2%	18	6.1%
51 - FLAGLER MAX	3,717	3,050	21.9%	3,109	19.5%	3,536	5.1%	2,281	63.0%
52	1,375	977	40.7%	1,261	9.0%	1,287	6.8%	1,006	36.7%
54	3,068	2,054	49.4%	2,940	4.4%	3,006	2.1%	1,978	55.1%
55 MARLINS SHUTTLE									
56 (*)	374	325	14.9%	354	5.7%	348	7.5%	276	35.6%
57	525	338	55.1%	433	21.1%	497	5.6%	236	122.5%
62	2,388	1,216	96.4%	1,815	31.5%	2,183	9.4%	1,214	96.8%
71 (*)	775	656	18.0%	711	9.0%	683	13.3%	432	79.3%
72 (*)	725	589	23.0%	781	-7.2%	649	11.6%	430	68.5%

(†) In this table and those which follow, "YOY" stands for "year-over-year", "MOM" for "month-over-month" and "YO2Y" for "year over two years", i.e., current month vs 12 months prior, one month prior, and 24 months prior, respectively.

(*) Contracted routes

METROBUS AVERAGE WEEKDAY BOARDINGS BY ROUTE

Route	Average Weekday	Average Weekday	Percent Change	Average Weekday	Percent Change	Average Weekday	Percent Change	Average Weekday	Percent Change
weekdays	Sep-23	Sep-22	YOY	Feb-20	Current vs Feb-20	Aug-23	MOM	Sep-21	YO2Y
73	2,792	2,373	17.7%	2,124	31.4%	2,826	-1.2%	1,527	82.8%
75	1,483	866	71.3%	1,429	3.8%	1,325	11.9%	922	60.8%
77	9,456	5,568	69.8%	7,129	32.6%	8,873	6.6%	5,375	75.9%
79 STREET MAX	455	279	63.4%	361	25.9%	457	-0.4%		
82 - WESTCHESTER CIRC. (*)	73	60	21.7%	62	18.2%	70	4.2%	31	132.7%
87	1,893	1,502	26.0%	1,499	26.2%	1,864	1.5%	1,000	89.3%
88	2,385	1,818	31.2%	2,076	14.9%	2,270	5.1%	1,983	20.2%
93 - BISCAYNE MAX	3,490	2,329	49.9%	3,334	4.7%	3,429	1.8%	1,809	92.9%
95 EXPRESS	1,146	750	52.8%	1,690	-32.2%	1,178	-2.7%	307	273.4%
99	1,834	1,144	60.4%	1,473	24.6%	1,724	6.4%	1,074	70.7%
101 - A (*)	177	227	-22.2%	177	0.0%	181	-2.2%	121	46.4%
103 - C				463				184	
104	1,029	677	52.1%	837	23.0%	888	15.9%	586	75.7%
105 - E	1,360	1,076	26.5%	1,287	5.7%	1,351	0.7%	855	59.1%
107 - G	1,984	1,379	43.8%	1,713	15.8%	2,003	-1.0%	1,125	76.3%
108 - H	486	333	46.1%	473	2.9%	471	3.2%	284	71.0%
110 - J	2,981	2,093	42.5%	2,508	18.8%	3,099	-3.8%	1,833	62.6%
112 - L	8,249	5,978	38.0%	7,636	8.0%	8,245	0.0%	6,616	24.7%
113 - M	892	537	66.0%	866	3.1%	922	-3.3%	404	120.9%
115 (*)	146	122	20.1%	180	-18.9%	134	9.1%	136	7.4%
119 - S	9,244	6,566	40.8%	8,970	3.1%	9,587	-3.6%	6,885	34.3%
120 - BEACH MAX	5,945	4,776	24.5%	6,667	-10.8%	6,019	-1.2%	3,766	57.9%
132 TRI-RAIL (DORAL)	39	3	1099.3%	16	151.6%	42	-6.2%	10	301.8%
135	1,688	920	83.5%	1,399	20.7%	1,472	14.7%	531	218.1%
136	149	166	-10.4%	126	17.9%	147	1.2%	105	41.8%
137 - WEST DADE CONN.	2,166	1,559	38.9%	1,626	33.2%	2,093	3.5%	1,002	116.1%
150 - MIAMI BEACH AIRPORT FLYER	2,151	1,463	47.0%	1,867	15.2%	2,278	-5.6%	738	191.4%
155 - BISCAYNE GARDENS CIRCULATOR (*)	49	43	15.8%	44	12.0%	48	3.3%	26	87.4%
175 - NW MIAMI-DADE EXPRESS				33					
183	3,464	2,226	55.7%	3,149	10.0%	3,335	3.9%	2,097	65.2%
195 EXPRESS - BROWARD BLVD				372					
196 EXPRESS - SHERIDAN ST				383					
200 - CUTLER BAY LOCAL	201	99	102.9%	158	27.2%	183	9.6%	1	19960.0%
202 - LITTLE HAITI CONN. (*)	112	87	29.6%	140	-19.7%	111	1.3%	72	55.6%
204 KILLIAN KAT	620	478	29.7%	1,071	-42.1%	594	4.3%		

METROBUS AVERAGE WEEKDAY BOARDINGS BY ROUTE

Route	Average Weekday	Average Weekday	Percent Change	Average Weekday	Percent Change	Average Weekday	Percent Change	Average Weekday	Percent Change
weekdays	Sep-23	Sep-22	YOY	Feb-20	Current vs Feb-20	Aug-23	MOM	Sep-21	YO2Y
207 (7st) - LITTLE HAVANA CIRC	1,681	1,155	45.5%	1,489	12.9%	1,652	1.7%	759	121.6%
208 (8st) - LITTLE HAVANA CIRC	1,536	1,047	46.6%	1,308	17.4%	1,561	-1.6%	803	91.1%
210 - SKYLAKE CIRC (*)	393	345	13.7%	282	39.4%	285	37.9%	304	29.2%
211 - OVERTOWN CIRC. (*)	83	75	11.1%	58	43.9%	83	0.2%	61	37.5%
212 - SWEETWATER CIRC. (*)	29	15	94.6%	15	94.6%	25	13.6%	30	-3.4%
217 - BUNCHE PARK CIRC (*)	74	62	18.7%	97	-24.0%	62	19.3%	52	43.2%
238 EAST/WEST CONN.	601	423	42.0%	449	33.7%	607	-1.0%	284	111.9%
241 TUTTLE LIMITED	306	89	244.7%			306	0.0%		
246 - NIGHT OWL	56	53	5.7%	94	-40.4%	56	-0.7%	10	444.4%
248 - PRINCETON CIRCULATOR (*)	155	126	22.8%	135	15.2%	147	5.6%	62	150.3%
252 - CORAL REEF MAX	989	676	46.2%	851	16.2%	973	1.6%	463	113.5%
254 - BROWNSVILLE CIRC. (*)	6	6	3.4%	19	-68.8%	6	-5.5%	33	-81.7%
267 - LUDLAM LIMITED (*)	152	160	-5.0%	149	2.0%	153	-0.8%	110	37.8%
272 SUNSET KAT (*)	446	344	29.4%	550	-19.0%	428	4.2%	288	55.0%
277 - 7th AVENUE MAX	851	552	54.3%	683	24.6%	755	12.8%	353	141.1%
286 - NORTH POINTE CIRC. (*)	88	68	29.6%	97	-9.4%	77	13.5%	36	144.2%
287 - SAGA BAY MAX	324	199	62.4%	358	-9.6%	317	2.0%	164	97.5%
288 - KENDALL CRUISER	367	262	40.2%	762	-51.8%	367	0.0%		
295 EXPRESS - BROWARD BLVD - CIVIC CENTER				233					
296 EXPRESS - SHERIDAN ST - CIVIC CENTER				215					
297-27th AVENUE ORANGE MAX	1,215	821	48.0%	1,356	-10.4%	1,167	4.1%	674	80.1%
301 DADE-MONROE EXPRESS (*)	993	699	41.9%	841	18.0%	1,030	-3.6%	991	0.2%
302 CARD SOUND EXPRESS (*)	87	87	0.7%	86	1.3%	93	-5.7%	70	25.0%
344 (*)	72	56	28.7%	96	-25.4%	77	-7.5%	48	49.7%
500	69	13	425.9%	81	-14.6%	72	-4.5%		
836 EXPRESS	255	158	61.2%			253	0.8%	119	113.2%
837 EXPRESS	187					166	12.4%		
GREEN HILLS SHUTTLE (*)	6	6	0.0%	9	-33.3%	7	-14.3%	6	0.0%
KINGS CREEK SHUTTLE (*)	9	22	-58.3%	13	-28.8%	11	-14.4%	15	-36.6%
SIERRA LAKES SHUTTLE (*)	15	17	-9.6%	45	-66.7%	23	-33.3%	18	-17.8%
ROBERT SHARP SHUTTLE (*)	21	14	50.0%	10	121.1%	19	8.2%	24	-12.5%
AHEPA SHUTTLE (*)	14	28	-50.0%	21	-32.5%	15	-7.9%	21	-34.0%
Total	179,668	126,001	42.6%	167,711	7.1%	173,885	3.3%	112,359	59.9%

(*) The following routes are entirely operated under contract: 1, 29, 46, 56, 71, 72, 82, 101-A, 115, 155, 202, 210, 211, 212, 217, 246, 248, 254, 267, 272, 286, 301, 302 and 344.

(1) Includes shuttles and those routes which were not run both years.

(2) Several express routes were suspended beginning at the end of March 2020, due to the SARS-CoV-2 pandemic, while other routes had alignment and schedule modifications made to them, in an ongoing effort to optimize service delivery.

METROBUS AVERAGE SATURDAY BOARDINGS BY ROUTE

Route	Average Saturday	Average Saturday	Percent Change	Average Saturday	Percent Change	Average Saturday	Percent Change	Average Saturday	Percent Change
Saturdays	Sep-23	Sep-22	YOY	Feb-20	Current vs Feb-20	Aug-23	MOM	Sep-21	YO2Y
1 (*)	156	97	61.2%	215	-27.3%	158	-1.2%	160	-2.1%
2	1,579	950	66.2%	1,616	-2.3%	1,706	-7.4%	1,381	14.4%
3	5,565	4,235	31.4%	5,229	6.4%	5,910	-5.8%	3,519	58.2%
7	2,017	1,674	20.5%	1,887	6.9%	2,076	-2.8%	1,591	26.8%
8	2,476	2,059	20.2%	2,027	22.1%	2,583	-4.1%	1,679	47.4%
9	3,734	2,543	46.8%	3,034	23.1%	3,885	-3.9%	2,478	50.7%
10	1,995	1,488	34.1%	1,896	5.3%	2,095	-4.7%	1,462	36.5%
11	6,277	4,749	32.2%	5,182	21.1%	6,351	-1.2%	3,905	60.7%
16	1,696	1,124	50.9%	1,566	8.3%	1,809	-6.2%	1,022	65.9%
17	2,424	1,824	32.9%	2,363	2.6%	2,584	-6.2%	1,665	45.6%
22	2,317	1,710	35.5%	2,084	11.2%	2,456	-5.7%	1,367	69.5%
24 - Coral Way Limited	1,341	1,157	15.9%	1,165	15.1%	1,406	-4.6%	622	115.8%
26	964	695	38.8%	851	13.3%	917	5.2%	475	103.2%
27	4,017	3,266	23.0%	4,034	-0.4%	4,343	-7.5%	2,900	38.5%
31 - BUSWAY LOCAL		569		896				536	
32	1,129	931	21.4%	1,029	9.8%	1,214	-7.0%	728	55.1%
33	1,158	852	36.0%	951	21.8%	1,115	3.9%	652	77.7%
35	1,422	1,036	37.2%	1,372	3.6%	1,545	-8.0%	881	61.4%
36	1,588	1,085	46.3%	1,289	23.1%	1,627	-2.4%	962	65.0%
37	2,013	1,651	21.9%	2,090	-3.7%	2,092	-3.8%	1,499	34.3%
38 TRANSITWAY MAX	5,657	3,258	73.6%	4,715	20.0%	5,928	-4.6%	3,087	83.3%
40	877	553	58.6%	655	33.9%	890	-1.5%	449	95.5%
42	609	519	17.4%	552	10.5%	647	-5.7%	443	37.6%
52	699	554	26.2%	686	2.0%	679	3.1%	553	26.6%
54	1,907	1,472	29.6%	1,727	10.4%	1,984	-3.9%	1,194	59.7%
55 MARLINS SHUTTLE									
62	1,782	1,032	72.8%	1,343	32.7%	1,726	3.3%	917	94.3%
71 (*)	256	252	1.5%	252	1.6%	240	6.7%	166	54.6%
72 (*)	351	344	1.9%	350	0.3%	367	-4.5%	289	21.2%
73	1,272	1,088	17.0%	860	47.9%	1,311	-3.0%	646	97.1%
75	490	343	43.0%	468	4.7%	496	-1.1%	335	46.2%
77	5,633	3,616	55.8%	4,197	34.2%	5,477	2.9%	3,152	78.7%
87	554	465	19.2%	402	37.7%	660	-16.1%	307	80.7%
88	1,666	1,344	24.0%	1,620	2.8%	1,717	-2.9%	1,226	35.9%
99	1,085	757	43.5%	849	27.9%	1,085	0.0%	626	73.5%

METROBUS AVERAGE SATURDAY BOARDINGS BY ROUTE

Route	Average Saturday	Average Saturday	Percent Change	Average Saturday	Percent Change	Average Saturday	Percent Change	Average Saturday	Percent Change
Saturdays	Sep-23	Sep-22	YOY	Feb-20	Current vs Feb-20	Aug-23	MOM	Sep-21	YO2Y
101 - A (*)	64	63	1.4%	71	-10.2%	81	-21.2%	42	52.3%
103 - C				315				159	
104	463	359	29.1%	468	-1.1%	486	-4.6%	269	72.6%
105 - E	736	560	31.5%	619	18.9%	777	-5.3%	487	51.2%
107 - G	1,287	829	55.3%	1,066	20.7%	1,369	-6.0%	917	40.3%
108 - H	393	281	39.9%	372	5.7%	423	-7.1%	239	64.8%
110 - J	2,088	1,511	38.2%	1,952	6.9%	1,821	14.7%	1,261	65.6%
112 - L	6,567	4,731	38.8%	5,667	15.9%	6,796	-3.4%	4,410	48.9%
113 - M	569	346	64.3%	503	13.1%	584	-2.6%	259	119.9%
115 (*)	78	70	12.8%	82	-4.6%	74	5.9%	92	-14.6%
119 - S	7,329	5,663	29.4%	6,861	6.8%	8,002	-8.4%	4,706	55.7%
120 - BEACH MAX	5,176	3,803	36.1%	4,744	9.1%	5,589	-7.4%	2,898	78.6%
135	532	370	43.7%	539	-1.3%	524	1.5%	157	237.9%
137 - WEST DADE CONN.	1,342	1,083	24.0%	1,027	30.7%	1,554	-13.6%	737	82.1%
150 - MIAMI BEACH AIRPORT FLYER	2,073	1,452	42.8%	1,604	29.3%	2,287	-9.3%	564	267.8%
183	2,068	1,530	35.1%	1,790	15.5%	2,010	2.9%	1,287	60.7%
200 - CUTLER BAY LOCAL	160	109	47.2%	119	34.6%	165	-2.9%	9	1682.2%
202 - LITTLE HAITI CONN. (*)	24	42	-42.0%	50	-51.8%	23	4.1%	55	-56.0%
207 (7st) - LITTLE HAVANA CIRC	850	753	12.9%	1,032	-17.7%	882	-3.6%	687	23.7%
208 (8st) - LITTLE HAVANA CIRC	1,054	810	30.2%	1,044	0.9%	1,058	-0.4%	787	34.0%
210 - SKYLAKE CIRC (*)	243	102	139.2%	165	47.5%	80	205.2%	103	136.9%
241 TUTTLE LIMITED	206	45	357.3%			193	6.9%		
246 - NIGHT OWL	51	45	12.7%	84	-39.6%	35	46.8%		
252 - CORAL REEF MAX	366	302	21.2%	302	21.3%	388	-5.6%	154	138.6%
286 - NORTH POINTE CIRC. (*)	65	61	8.1%	41	60.3%	34	93.8%	29	127.5%
301 DADE-MONROE EXPRESS (*)	921	757	21.7%	801	15.0%	982	-6.2%	1,009	-8.7%
302 CARD SOUND EXPRESS (*)	80	69	14.9%	57	40.6%	90	-11.1%	43	84.0%
338 - WEEKEND EXPRESS	227	154	47.7%	237	-4.1%	252	-9.8%	123	84.9%
500	79	17	381.2%	70	13.4%	83	-3.8%		
12/21 WEEKEND INTERL.	3,013	1,884	59.9%	2,528	19.2%	3,109	-3.1%	1,660	81.5%
FEDERATION GARDENS SHUTTLE (*)	28	23	24.0%	28	-0.7%	25	14.3%	20	41.0%
Total	104,890	77,148	36.0%	93,742	11.9%	108,894	-3.7%	66,057	58.8%

METROBUS AVERAGE SUNDAY BOARDINGS BY ROUTE

Route	Average Sunday	Average Sunday	Percent Change	Average Sunday	Percent Change	Average Sunday	Percent Change	Average Sunday	Percent Change
Sundays	Sep-23	Sep-22	YOY	Feb-20	Current vs Feb-20	Aug-23	MOM	Sep-21	YO2Y
1 (*)	144	177	-18.4%	201	-28.1%	152	-4.8%	134	7.6%
2	1,114	762	46.2%	1,335	-16.5%	1,117	-0.3%	670	66.2%
3	4,625	3,316	39.5%	4,353	6.3%	4,845	-4.5%	3,134	47.6%
7	1,744	1,352	29.0%	1,654	5.4%	1,595	9.4%	993	75.6%
8	1,860	1,627	14.3%	1,746	6.5%	1,814	2.5%	1,361	36.7%
9	2,849	2,142	33.0%	2,549	11.8%	2,852	-0.1%	2,052	38.8%
10	1,620	1,038	56.1%	1,441	12.4%	1,581	2.4%	1,184	36.8%
11	4,070	2,980	36.6%	3,917	3.9%	3,958	2.8%	2,780	46.4%
16	1,034	777	33.1%	997	3.8%	940	10.0%	683	51.3%
17	1,790	1,297	38.0%	1,833	-2.3%	1,742	2.8%	1,112	61.0%
22	1,806	1,281	40.9%	1,548	16.6%	1,768	2.2%	995	81.5%
24 - Coral Way Limited	1,140	934	22.1%	905	26.1%	1,061	7.5%	685	66.5%
26	852	582	46.3%	717	18.9%	761	12.1%	562	51.7%
27	3,000	2,159	38.9%	2,918	2.8%	2,858	5.0%	1,974	52.0%
31 - BUSWAY LOCAL		467		715				380	
32	736	640	14.9%	772	-4.7%	694	6.1%	456	61.3%
33	709	526	34.8%	607	16.8%	642	10.4%	425	66.6%
35	1,234	776	58.9%	942	31.0%	1,131	9.1%	776	59.0%
36	1,201	823	45.9%	1,111	8.1%	1,198	0.3%	846	42.0%
37	1,709	1,347	26.8%	1,739	-1.7%	1,688	1.2%	1,221	39.9%
38 TRANSITWAY MAX	4,431	2,812	57.6%	4,147	6.9%	5,415	-18.2%	2,644	67.6%
40	580	419	38.4%	447	29.7%	572	1.4%	348	66.6%
42	449	310	44.9%	416	7.9%	412	9.1%	278	61.7%
52	585	419	39.8%	466	25.5%	502	16.6%	387	51.4%
54	1,251	951	31.5%	1,171	6.9%	1,185	5.6%	825	51.6%
55 MARLINS SHUTTLE									
62	1,069	596	79.4%	891	20.0%	987	8.3%	584	83.1%
71 (*)	166	179	-7.5%	162	2.2%	184	-10.0%	105	58.3%
72 (*)	290	331	-12.3%	265	9.6%	273	6.1%	256	13.1%
73	670	421	59.0%	495	35.4%	676	-0.9%	372	79.9%
75	312	233	33.7%	271	15.2%	311	0.2%	180	73.6%
77	3,856	2,710	42.3%	2,815	37.0%	3,800	1.5%	2,271	69.8%
87	380	303	25.4%	319	19.2%	339	12.3%	197	93.4%
88	1,294	959	34.9%	1,286	0.6%	1,239	4.5%	914	41.5%
99	855	571	49.8%	658	29.9%	757	13.0%	587	45.5%

METROBUS AVERAGE SUNDAY BOARDINGS BY ROUTE

Route	Average Sunday	Average Sunday	Percent Change	Average Sunday	Percent Change	Average Sunday	Percent Change	Average Sunday	Percent Change
Sundays	Sep-23	Sep-22	YOY	Feb-20	Current vs Feb-20	Aug-23	MOM	Sep-21	YO2Y
101 - A (*)	57	53	6.4%	56	2.3%	31	83.2%	42	35.9%
103 - C				212				89	
104	343	306	12.1%	317	8.3%	326	5.3%	171	100.4%
105 - E	661	523	26.2%	616	7.3%	653	1.2%	447	47.9%
107 - G	1,029	686	50.0%	895	15.0%	1,047	-1.7%	636	61.8%
108 - H	411	276	48.6%	328	25.1%	488	-15.8%	236	74.3%
110 - J	1,862	1,210	53.8%	1,638	13.7%	1,895	-1.7%	1,013	83.8%
112 - L	5,099	3,874	31.6%	4,804	6.1%	4,696	8.6%	3,074	65.8%
113 - M	418	279	49.8%	431	-2.9%	465	-10.1%	236	77.3%
115 (*)	73	59	24.1%	80	-8.8%	60	21.7%	92	-20.8%
119 - S	7,750	5,631	37.6%	7,141	8.5%	7,792	-0.5%	4,574	69.5%
120 - BEACH MAX	3,449	2,641	30.6%	3,469	-0.6%	3,464	-0.4%	1,958	76.1%
135	403	232	73.6%	349	15.4%	393	2.6%	83	387.3%
137 - WEST DADE CONN.	1,064	888	19.8%	879	21.0%	947	12.3%	578	84.0%
150 - MIAMI BEACH AIRPORT FLYER	1,959	1,323	48.1%	1,574	24.5%	1,970	-0.5%	622	215.1%
183	1,609	1,070	50.4%	1,413	13.9%	1,550	3.8%	1,109	45.1%
200 - CUTLER BAY LOCAL	75	51	46.3%	59	27.5%	64	17.0%	4	1621.5%
202 - LITTLE HAITI CONN. (*)	30	38	-21.4%	39	-22.6%	23	32.7%	52	-42.1%
207 (7st) - LITTLE HAVANA CIRC	664	460	44.4%	796	-16.6%	609	9.1%	404	64.4%
208 (8st) - LITTLE HAVANA CIRC	904	684	32.1%	911	-0.8%	762	18.5%	630	43.5%
210 - SKYLAKE CIRC (*)	221	100	120.6%	143	54.5%	139	58.7%	126	76.0%
241 TUTTLE LIMITED	207	46	345.3%			172	19.9%		
246 - NIGHT OWL	56	61	-7.9%	87	-35.4%	67	-15.5%	5	1024.0%
252 - CORAL REEF MAX	314	193	62.6%	199	58.2%	299	5.1%	127	147.6%
301 DADE-MONROE EXPRESS (*)	864	645	34.1%	751	15.1%	895	-3.4%	935	-7.6%
302 CARD SOUND EXPRESS (*)	72	80	-10.0%	57	26.3%	73	-1.0%	64	13.2%
338 - WEEKEND EXPRESS	235	177	32.5%	252	-6.9%	316	-25.8%	126	85.9%
500	70	15	357.1%	83	-14.9%	74	-4.9%		
12/21 WEEKEND INTERL.	2,409	1,509	59.6%	2,048	17.6%	2,325	3.6%	1,242	93.9%
Total	81,731	59,332	37.8%	75,428	8.4%	80,634	1.4%	51,045	60.1%

METROBUS TOTAL MONTHLY BOARDINGS BY ROUTE

Route	Total Month	Total Month	Percent Change	Total Month	Percent Change	Total Month	Percent Change	Total Month	Percent Change
Monthly Total	Sep-23	Sep-22	YOY	Feb-20	Current vs Feb-20	Aug-23	MOM	Sep-21	YO2Y
1 (*)	5,941	4,658	27.5%	5,558	6.9%	6,149	-3.4%	5,108	16.3%
2	73,061	45,086	62.0%	75,463	-3.2%	75,168	-2.8%	52,723	38.6%
3	156,392	109,352	43.0%	146,294	6.9%	160,159	-2.4%	115,206	35.7%
7	97,756	73,179	33.6%	86,077	13.6%	101,416	-3.6%	62,816	55.6%
8	113,537	85,956	32.1%	95,295	19.1%	120,139	-5.5%	87,188	30.2%
9	162,147	106,290	52.6%	135,924	19.3%	168,420	-3.7%	119,400	35.8%
10	66,869	44,758	49.4%	64,874	3.1%	68,315	-2.1%	42,580	57.0%
11	238,529	161,183	48.0%	187,425	27.3%	249,354	-4.3%	164,000	45.4%
12	59,652	40,360	47.8%	55,585	7.3%	62,361	-4.3%	36,998	61.2%
16	52,826	37,133	42.3%	49,061	7.7%	54,224	-2.6%	31,101	69.9%
17	101,592	66,415	53.0%	96,715	5.0%	105,869	-4.0%	61,412	65.4%
19	37,093	20,367	82.1%	30,847	20.2%	35,896	3.3%	19,042	94.8%
21	40,961	25,233	62.3%	36,341	12.7%	44,523	-8.0%	24,139	69.7%
22	109,281	71,077	53.8%	89,404	22.2%	114,304	-4.4%	59,577	83.4%
24 - Coral Way Limited	55,632	41,860	32.9%	36,237	53.5%	59,645	-6.7%	23,624	135.5%
26	45,589	32,785	39.1%	42,683	6.8%	46,419	-1.8%	32,436	40.6%
27	173,978	120,821	44.0%	171,282	1.6%	182,968	-4.9%	124,276	40.0%
29 (*)	10,418	7,941	31.2%	10,684	-2.5%	11,262	-7.5%	6,069	71.7%
31 - BUSWAY LOCAL		19,705		29,125		0		17,643	
32	62,261	45,644	36.4%	56,027	11.1%	65,686	-5.2%	36,077	72.6%
33	45,847	31,485	45.6%	40,918	12.0%	47,954	-4.4%	25,843	77.4%
34 TRANSITWAY EXPRESS	31,375	20,121	55.9%	40,159	-21.9%	33,049	-5.1%	11,086	183.0%
35	72,991	44,387	64.4%	59,041	23.6%	73,338	-0.5%	39,750	83.6%
36	65,781	48,231	36.4%	61,606	6.8%	70,916	-7.2%	42,916	53.3%
37	86,306	61,031	41.4%	82,870	4.1%	92,134	-6.3%	65,482	31.8%
38 TRANSITWAY MAX	141,014	110,987	27.1%	167,379	-15.8%	148,274	-4.9%	110,632	27.5%
39 TRANSITWAY EXPRESS	13,489			17,853	-24.4%	12,506	7.9%	3,276	311.8%
40	52,436	35,118	49.3%	40,497	29.5%	56,429	-7.1%	28,598	83.4%
42	25,525	17,414	46.6%	20,825	22.6%	25,931	-1.6%	16,316	56.4%
46 - LIBERTY CITY CONN. (*)	386	704	-45.2%	814	-52.6%	418	-7.7%	382	1.0%
51 - FLAGLER MAX	74,340	61,003	21.9%	62,186	19.5%	81,333	-8.6%	47,897	55.2%
52	33,917	23,850	42.2%	30,522	11.1%	34,327	-1.2%	25,262	34.3%
54	77,158	51,719	49.2%	72,125	7.0%	81,807	-5.7%	50,438	53.0%
55 MARLINS SHUTTLE									
56 (*)	7,476	6,508	14.9%	7,071	5.7%	7,995	-6.5%	5,790	29.1%
57	10,491	6,764	55.1%	8,665	21.1%	11,421	-8.1%	4,950	111.9%
62	62,012	31,419	97.4%	46,582	33.1%	61,064	1.6%	32,071	93.4%
71 (*)	17,597	15,032	17.1%	16,118	9.2%	17,413	1.1%	10,258	71.5%
72 (*)	17,703	14,816	19.5%	18,433	-4.0%	17,498	1.2%	11,473	54.3%

METROBUS TOTAL MONTHLY BOARDINGS BY ROUTE

Route	Total Month	Total Month	Percent Change	Total Month	Percent Change	Total Month	Percent Change	Total Month	Percent Change
Monthly Total	Sep-23	Sep-22	YOY	Feb-20	Current vs Feb-20	Aug-23	MOM	Sep-21	YO2Y
73	65,546	53,911	21.6%	48,767	34.4%	72,942	-10.1%	36,514	79.5%
75	33,669	19,849	69.6%	31,994	5.2%	33,713	-0.1%	21,611	55.8%
77	236,567	139,375	69.7%	174,833	35.3%	241,187	-1.9%	136,839	72.9%
79 STREET MAX	9,103	5,570	63.4%	7,228	25.9%	10,513	-13.4%		
82 - WESTCHESTER CIRC. (*)	1,698	1,355	25.3%	1,482	14.6%	1,783	-4.8%	775	119.1%
87	42,522	33,421	27.2%	33,273	27.8%	46,870	-9.3%	23,207	83.2%
88	62,498	46,539	34.3%	54,772	14.1%	64,036	-2.4%	51,123	22.3%
93 - BISCAYNE MAX	69,806	46,573	49.9%	66,684	4.7%	78,859	-11.5%	37,997	83.7%
95 EXPRESS	22,923	14,998	52.8%	33,796	-32.2%	27,093	-15.4%	6,446	255.6%
99	46,388	28,754	61.3%	36,325	27.7%	47,014	-1.3%	28,004	65.6%
101 - A (*)	4,140	5,065	-18.3%	4,114	0.6%	4,607	-10.1%	2,914	42.1%
103 - C				11,682				4,939	
104	24,618	16,500	49.2%	20,351	21.0%	23,676	4.0%	14,230	73.0%
105 - E	34,185	26,367	29.7%	31,302	9.2%	36,790	-7.1%	22,133	54.5%
107 - G	51,253	34,331	49.3%	43,178	18.7%	55,724	-8.0%	30,475	68.2%
108 - H	13,743	9,163	50.0%	12,624	8.9%	14,475	-5.1%	8,105	69.6%
110 - J	79,369	53,948	47.1%	66,481	19.4%	86,147	-7.9%	48,612	63.3%
112 - L	223,305	157,856	41.5%	200,268	11.5%	235,611	-5.2%	171,945	29.9%
113 - M	22,778	13,527	68.4%	21,548	5.7%	25,413	-10.4%	10,694	113.0%
115 (*)	3,678	3,005	22.4%	4,334	-15.1%	3,614	1.8%	3,684	-0.2%
119 - S	260,282	182,121	42.9%	242,257	7.4%	283,670	-8.2%	186,287	39.7%
120 - BEACH MAX	162,014	123,939	30.7%	170,942	-5.2%	174,639	-7.2%	100,458	61.3%
132 TRI-RAIL (DORAL)	785	36	2080.6%	312	151.6%	962	-18.4%	127	518.1%
135 (*)	38,429	21,040	82.6%	32,067	19.8%	37,511	2.4%	11,946	221.7%
136	2,977	3,323	-10.4%	2,524	17.9%	3,382	-12.0%	2,204	35.1%
137 - WEST DADE CONN.	55,343	39,951	38.5%	41,167	34.4%	58,142	-4.8%	26,880	105.9%
150 - MIAMI BEACH AIRPORT FLYER	63,175	41,685	51.6%	51,651	22.3%	69,413	-9.0%	20,862	202.8%
155 - BISCAYNE GARDENS CIRCULATOR (*)	987	852	15.8%	881	12.0%	1,099	-10.2%	553	78.5%
175 - NW MIAMI-DADE EXPRESS				661					
183	87,671	55,980	56.6%	77,570	13.0%	90,932	-3.6%	54,734	60.2%
195 EXPRESS - BROWARD BLVD				7,441					
196 EXPRESS - SHERIDAN ST				7,658					
200 - CUTLER BAY LOCAL	5,187	2,668	94.4%	3,984	30.2%	5,126	1.2%	32	16109.4%
202 - LITTLE HAITI CONN. (*)	2,516	2,091	20.3%	3,200	-21.4%	2,732	-7.9%	1,995	26.1%
204 KILLIAN KAT	12,398	9,557	29.7%	21,418	-42.1%	13,673	-9.3%		

METROBUS TOTAL MONTHLY BOARDINGS BY ROUTE

Route	Total Month	Total Month	Percent Change	Total Month	Percent Change	Total Month	Percent Change	Total Month	Percent Change
Monthly Total	Sep-23	Sep-22	YOY	Feb-20	Current vs Feb-20	Aug-23	MOM	Sep-21	YO2Y
207 (7st) - LITTLE HAVANA CIRC	41,191	28,411	45.0%	38,127	8.0%	43,965	-6.3%	20,698	99.0%
208 (8st) - LITTLE HAVANA CIRC	40,501	27,605	46.7%	35,018	15.7%	43,175	-6.2%	23,167	74.8%
210 - SKYLAKE CIRC (*)	10,177	7,814	30.2%	7,033	44.7%	7,428	37.0%	7,423	37.1%
211 - OVERTOWN CIRC. (*)	1,668	1,502	11.1%	1,159	43.9%	1,915	-12.9%	1,274	30.9%
212 - SWEETWATER CIRC. (*)	574	295	94.6%	295	94.6%	581	-1.2%	624	-8.0%
217 - BUNCHE PARK CIRC (*)	1,481	1,248	18.7%	1,949	-24.0%	1,428	3.7%	1,086	36.4%
238 EAST/WEST CONN.	12,020	8,467	42.0%	8,987	33.7%	13,959	-13.9%	5,957	101.8%
241 TUTTLE LIMITED	8,181	2,187	274.1%			8,495	-3.7%		
246 - NIGHT OWL	1,652	1,542	7.1%	2,641	-37.4%	1,698	-2.7%	92	1695.7%
248 - PRINCETON CIRCULATOR (*)	3,099	2,523	22.8%	2,690	15.2%	3,374	-8.2%	1,300	138.4%
252 - CORAL REEF MAX	23,174	15,697	47.6%	19,325	19.9%	25,125	-7.8%	10,972	111.2%
254 - BROWNSVILLE CIRC. (*)	120	116	3.4%	384	-68.8%	146	-17.8%	690	-82.6%
267 - LUDLAM LIMITED (*)	3,039	3,198	-5.0%	2,978	2.0%	3,524	-13.8%	2,315	31.3%
272 SUNSET KAT (*)	8,911	6,887	29.4%	11,004	-19.0%	9,839	-9.4%	6,038	47.6%
277 - 7th AVENUE MAX	17,025	11,031	54.3%	13,669	24.6%	17,363	-1.9%	7,414	129.6%
286 - NORTH POINTE CIRC. (*)	2,085	1,599	30.4%	2,145	-2.8%	1,916	8.8%	871	139.4%
287 - SAGA BAY MAX	6,473	3,985	62.4%	7,160	-9.6%	7,298	-11.3%	3,441	88.1%
288 - KENDALL CRUISER	7,346	5,239	40.2%	15,249	-51.8%	8,451	-13.1%		
295 EXPRESS - BROWARD BLVD - CIVIC CENTER				4,668					
296 EXPRESS - SHERIDAN ST - CIVIC CENTER				4,297					
297-27th AVENUE ORANGE MAX	24,295	16,417	48.0%	27,125	-10.4%	26,845	-9.5%	14,161	71.6%
301 DADE-MONROE EXPRESS (*)	28,782	20,240	42.2%	23,838	20.7%	31,202	-7.8%	29,516	-2.5%
302 CARD SOUND EXPRESS (*)	2,506	2,413	3.9%	2,236	12.1%	2,780	-9.9%	1,959	27.9%
338 - WEEKEND EXPRESS	2,308	1,169	97.4%	2,191	5.3%	2,271	1.6%	1,122	105.7%
344 (*)	1,431	1,112	28.7%	1,919	-25.4%	1,779	-19.6%	1,004	42.5%
500	2,132	406	425.1%	2,301	-7.3%	2,291	-6.9%		
836 EXPRESS	5,092	3,159	61.2%			5,808	-12.3%	2,508	103.0%
837 EXPRESS	3,733					3,820	-2.3%		
12/21 WEEKEND INTERL.	27,107	15,083	79.7%	20,830	30.1%	21,736	24.7%	12,848	111.0%
GREEN HILLS SHUTTLE (*)	18	18	0.0%	36	-50.0%	28	-35.7%	18	0.0%
KINGS CREEK SHUTTLE (*)	37	111	-66.7%	52	-28.8%	54	-31.5%	73	-49.3%
SIERRA LAKES SHUTTLE (*)	75	83	-9.6%	180	-58.3%	90	-16.7%	73	2.7%
ROBERT SHARP SHUTTLE (*)	84	42	100.0%	38	121.1%	97	-13.4%	120	-30.0%
AHEPA SHUTTLE (*)	56	140	-60.0%	83	-32.5%	76	-26.3%	106	-47.2%
FEDERATION GARDENS SHUTTLE (*)	141	91	54.9%	142	-0.7%	74	90.5%	80	76.3%
Total	4,525,426	3,123,572	44.9%	4,123,083	9.8%	4,756,063	-4.8%	2,877,110	57.3%

YEAR-OVER-YEAR BUS RIDERSHIP BY ROUTE SERVICE TYPE

Boardings by Service Type and Route	Average Weekday	Average Weekday	Percent Change	Average Saturday	Average Saturday	Percent Change	Average Sunday	Average Sunday	Percent Change	Total Monthly	Total Monthly	Percent Change
	Sep-23	Sep-22	23 vs 22	Sep-23	Sep-22	23 vs 22	Sep-23	Sep-22	23 vs 22	Sep-23	Sep-22	23 vs 22
Directly Operated Express Routes (1)												
34 EXPRESS	1,569	1,006	55.9%							31,375	20,121	55.9%
39 EXPRESS	674									13,489		
95-EXPRESS	1,146	750	52.8%							22,923	14,998	52.8%
150-MIAMI BEACH AIRPORT FLYER	2,151	1,463	47.0%	2,073	1,452	42.8%	1,959	1,323	48.1%	63,175	41,685	51.6%
175 - NW MIAMI-DADE EXPRESS												
195 EXPRESS - BROWARD BLVD												
196 EXPRESS - SHERIDAN ST												
295 EXPRESS - BROWARD BLVD - CIVIC CENTER												
296 EXPRESS - SHERIDAN ST - CIVIC CENTER												
204 KAT-KILLIAN	620	478	29.7%							12,398	9,557	29.7%
288 KENDALL CRUISER	367	262	40.2%							7,346	5,239	40.2%
338 - WEEKEND EXPRESS				227	154	47.7%	235	177	32.5%	2,308	1,169	97.4%
836 EXPRESS	255	158	61.2%							5,092	3,159	61.2%
837 EXPRESS	187									3,733		
Subtotal Express Routes	6,968	4,117	69.3%	2,300	1,605	43.3%	2,194	1,500	46.3%	161,839	95,928	68.7%
Percentage of All Bus Routes	3.9%	3.3%		2.2%	2.1%		2.7%	2.5%		3.6%	3.1%	
Contracted Routes												
1	222	169	31.1%	156	97	61.2%	144	177	-18.4%	5,941	4,658	27.5%
29	521	397	31.2%							10,418	7,941	31.2%
46 - LIBERTY CITY CONN.	19	35	-45.2%							386	704	-45.2%
56	374	325	14.9%							7,476	6,508	14.9%
71	775	656	18.0%	256	252	1.5%	166	179	-7.5%	17,597	15,032	17.1%
72	725	589	23.0%	351	344	1.9%	290	331	-12.3%	17,703	14,816	19.5%
82 - WESTCHESTER CIRC	73	60	21.7%	49	40	22.0%				1,698	1,355	25.3%
101 - A	177	227	-22.2%	64	63	1.4%	57	53	6.4%	4,140	5,065	-18.3%
115	146	122	20.1%	78	70	12.8%	73	59	24.1%	3,678	3,005	22.4%
155 - BISCAYNE GARDENS CIRC	49	43	15.8%							987	852	15.8%
202 - LITTLE HAITI CONN.	112	87	29.6%	24	42	-42.0%	30	38	-21.4%	2,516	2,091	20.3%
210 - SKYLAKE CIRC	393	345	13.7%	243	102	139.2%	221	100	120.6%	10,177	7,814	30.2%
211-OVERTOWN CIRC	83	75	11.1%							1,668	1,502	11.1%
212-SWEETWATER CIRC	29	15	94.6%							574	295	94.6%
217 - BUNCHE PARK CIRC	74	62	18.7%							1,481	1,248	18.7%
246 - NIGHT OWL	56	53	5.7%	51	45	12.7%	56	61	-7.9%	1,652	1,542	7.1%
248 - PRINCETON CIRCULATOR	155	126	22.8%							3,099	2,523	22.8%
254-BROWNSVILLE CIRC	6	6	3.4%							120	116	3.4%
286-NORTH POINTE CIRC	88	68	29.6%	65	61	8.1%				2,085	1,599	30.4%
344	72	56	28.7%							1,431	1,112	28.7%
Subtotal Contracted Reg. & Circ. Routes	4,148	3,516	18.0%	1,338	1,115	20.0%	1,037	998	3.9%	94,827	79,778	18.9%
Percentage of All Bus Routes	2.3%	2.8%		1.3%	1.4%		1.3%	1.7%		2.1%	2.6%	

(1) Several express routes were suspended beginning at the end of March 2020, due to the SARS-CoV-2 pandemic, while other routes had alignment and schedule modifications made to them, in an ongoing effort to optimize service delivery..

YEAR-OVER-YEAR BUS RIDERSHIP BY ROUTE SERVICE TYPE

Boardings by Service Type and Route	Average Weekday	Average Weekday	Percent Change	Average Saturday	Average Saturday	Percent Change	Average Sunday	Average Sunday	Percent Change	Total Monthly	Total Monthly	Percent Change
	Sep-23	Sep-22	23 vs 22	Sep-23	Sep-22	23 vs 22	Sep-23	Sep-22	23 vs 22	Sep-23	Sep-22	23 vs 22
Contracted Express Routes												
272 SUNSET-KAT	446	344	29.4%							8,911	6,887	29.4%
301-DADE MONROE EXPRESS	993	699	41.9%	921	757	21.7%	864	645	34.1%	28,782	20,240	42.2%
302-CARD SOUND EXPRESS	87	87	0.7%	80	69	14.9%	72	80	-10.0%	2,506	2,413	3.9%
Subtotal Contracted Express Routes	1,526	1,131	34.9%	1,001	826	21.1%	936	725	29.2%	40,199	29,540	36.1%
Percentage of All Bus Routes	0.8%	0.9%		1.0%	1.1%		1.1%	1.2%		0.9%	0.9%	
Limited Stop Routes												
24-CORAL WAY LIMITED	2,161	1,628	32.8%	1,341	1,157	15.9%	1,140	934	22.1%	55,632	41,860	32.9%
51-FLAGLER MAX	3,717	3,050	21.9%							74,340	61,003	21.9%
79 STREET MAX	455	279	63.4%							9,103	5,570	63.4%
93 - BISCAYNE MAX	3,490	2,329	49.9%							69,806	46,573	49.9%
120 - BEACH MAX	5,945	4,776	24.5%	5,176	3,803	36.1%	3,449	2,641	30.6%	162,014	123,939	30.7%
241 TUTTLE LIMITED	306	89	244.7%	206	45	357.3%	207	46	345.3%	8,181	2,187	274.1%
252-CORAL REEF MAX	989	676	46.2%	366	302	21.2%	314	193	62.6%	23,174	15,697	47.6%
267-LUDLAM LIMITED (contracted)	152	160	-5.0%							3,039	3,198	-5.0%
277-7TH AVENUE MAX	851	552	54.3%							17,025	11,031	54.3%
287-SAGA BAY MAX	324	199	62.4%							6,473	3,985	62.4%
297-27th AVENUE ORANGE MAX	1,215	821	48.0%							24,295	16,417	48.0%
Subtotal Limited Stop Routes	19,604	14,558	34.7%	7,089	5,308	33.6%	5,110	3,815	34.0%	453,082	331,460	36.7%
Percentage of All Bus Routes	10.9%	11.6%		6.8%	6.9%		6.3%	6.4%		10.0%	10.6%	
Directly Operated Free Routes												
132-TRI-RAIL DORAL	39	3	1099.3%							785	36	2080.6%
200-CUTLER BAY LOCAL	201	99	102.9%	160	109	47.2%	75	51	46.3%	5,187	2,668	94.4%
Subtotal Free Directly Operated Routes	240	102	134.9%	160	109	47.2%	75	51	46.3%	5,972	2,704	120.9%
Percentage of All Bus Routes	0.1%	0.1%		0.2%	0.1%		0.1%	0.1%		0.1%	0.1%	
Shuttles												
55-MARLINS SHUTTLE												
Percentage of All Bus Routes												
Contractor-Operated Lifeline Routes												
GREEN HILLS SHUTTLE	6	6	0.0%							18	18	0.0%
KINGS CREEK SHUTTLE	9	22	-58.3%							37	111	-66.7%
SIERRA LAKES SHUTTLE	15	17	-9.6%							75	83	-9.6%
ROBERT SHARP SHUTTLE	21	14	50.0%							84	42	100.0%
AHEPA SHUTTLE	14	28	-50.0%							56	140	-60.0%
FEDERATION GARDENS SHUTTLE				28	23	24.0%				141	91	54.9%
Subtotal Contractor-Operated Lifeline Routes	65	87	-24.8%	28	23	24.0%				411	485	-15.3%
Percentage of All Bus Routes	0.0%	0.1%		0.0%	0.0%					0.0%	0.0%	
All Other (Regular) Routes	147,117	102,491	43.5%	92,974	68,163	36.4%	72,379	52,243	38.5%	3,769,096	2,583,677	45.9%
Percentage of All Bus Routes	81.9%	81.3%		88.6%	88.4%		88.6%	88.1%		83.3%	82.7%	
Total Bus System	179,668	126,001	42.6%	104,890	77,148	36.0%	81,731	59,332	37.8%	4,525,426	3,123,572	44.9%

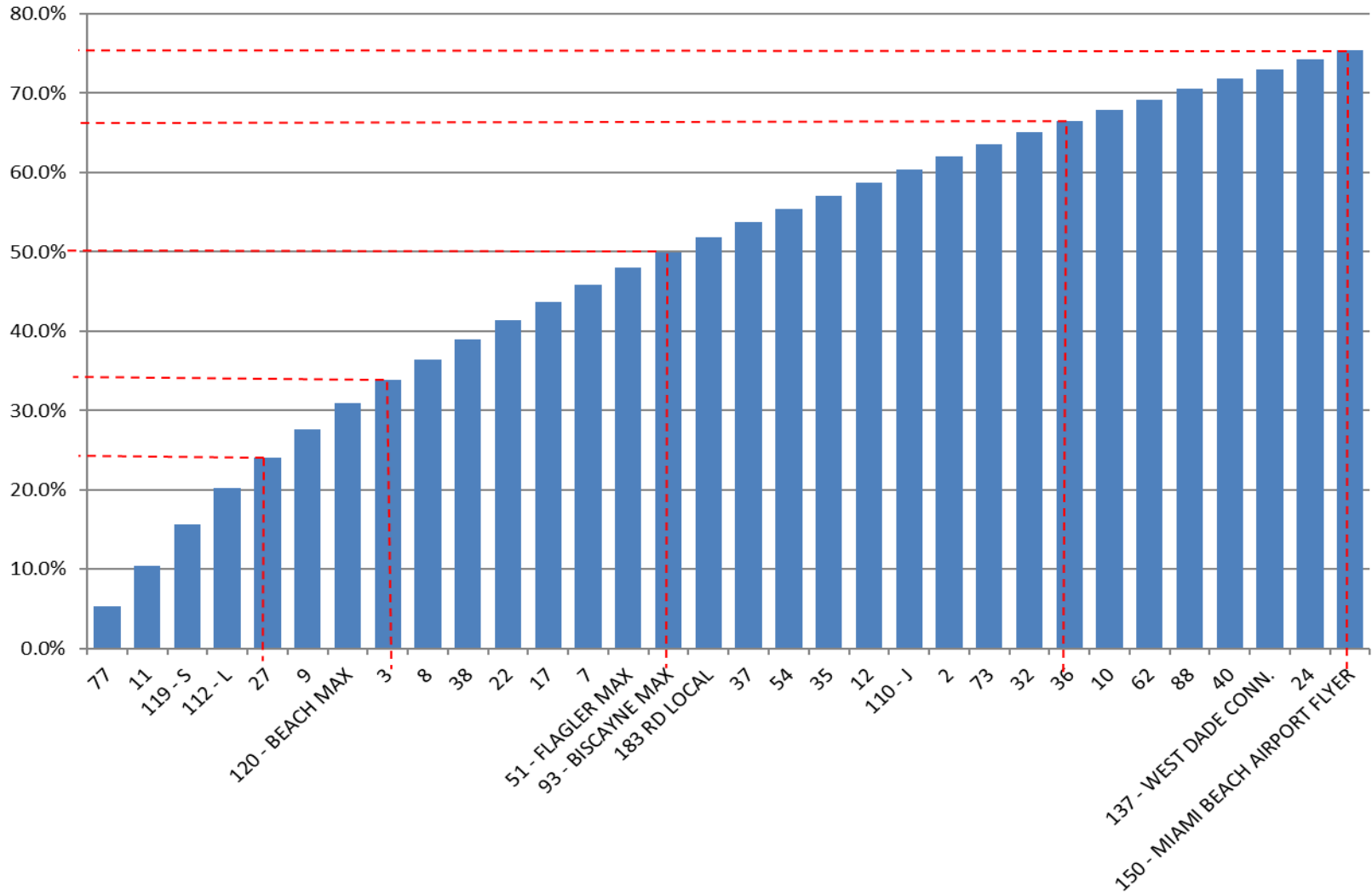
Bus Routes as Ranked by Percentage of Average Weekday Ridership September 2023

Rank	Route	Average Weekday	Percent Share	Cumul Pct Share	Rank	Route	Average Weekday	Percent Share	Cumul Pct Share	Rank	Route	Average Weekday	Percent Share	Cumul Pct Share
1	77	9,456	5.3%	5.3%	36	87	1,893	1.1%	79.8%	71	836	255	0.1%	98.7%
2	11	9,340	5.2%	10.5%	37	19	1,855	1.0%	80.8%	72	1	222	0.1%	98.8%
3	119	9,244	5.1%	15.6%	38	99	1,834	1.0%	81.8%	73	200	201	0.1%	98.9%
4	112	8,249	4.6%	20.2%	39	33	1,826	1.0%	82.9%	74	837	187	0.1%	99.1%
5	27	6,945	3.9%	24.1%	40	26	1,825	1.0%	83.9%	75	101	177	0.1%	99.2%
6	9	6,462	3.6%	27.7%	41	135	1,688	0.9%	84.8%	76	248	155	0.1%	99.2%
7	120	5,945	3.3%	31.0%	42	207	1,681	0.9%	85.7%	77	267	152	0.1%	99.3%
8	3	5,272	2.9%	33.9%	43	34	1,569	0.9%	86.6%	78	136	149	0.1%	99.4%
9	8	4,593	2.6%	36.5%	44	208	1,536	0.9%	87.5%	79	115	146	0.1%	99.5%
10	38	4,529	2.5%	39.0%	45	75	1,483	0.8%	88.3%	80	202	112	0.1%	99.5%
11	22	4,434	2.5%	41.4%	46	52	1,375	0.8%	89.1%	81	286	88	0.0%	99.6%
12	17	4,026	2.2%	43.7%	47	105	1,360	0.8%	89.8%	82	302	87	0.0%	99.6%
13	7	3,948	2.2%	45.9%	48	297	1,215	0.7%	90.5%	83	211	83	0.0%	99.7%
14	51	3,717	2.1%	48.0%	49	95	1,146	0.6%	91.1%	84	217	74	0.0%	99.7%
15	93	3,490	1.9%	49.9%	50	104	1,029	0.6%	91.7%	85	82	73	0.0%	99.8%
16	183	3,464	1.9%	51.8%	51	42	1,012	0.6%	92.3%	86	344	72	0.0%	99.8%
17	37	3,385	1.9%	53.7%	52	301	993	0.6%	92.8%	87	500	69	0.0%	99.9%
18	54	3,068	1.7%	55.4%	53	252	989	0.6%	93.4%	88	246	56	0.0%	99.9%
19	35	2,986	1.7%	57.1%	54	113	892	0.5%	93.9%	89	155	49	0.0%	99.9%
20	12	2,983	1.7%	58.7%	55	277	851	0.5%	94.3%	90	132	39	0.0%	99.9%
21	110	2,981	1.7%	60.4%	56	71	775	0.4%	94.8%	91	212	29	0.0%	99.9%
22	2	2,980	1.7%	62.1%	57	72	725	0.4%	95.2%	92	RS	21	0.0%	100.0%
23	73	2,792	1.6%	63.6%	58	39	674	0.4%	95.6%	93	46	19	0.0%	100.0%
24	32	2,647	1.5%	65.1%	59	204	620	0.3%	95.9%	94	SL	15	0.0%	100.0%
25	36	2,592	1.4%	66.5%	60	238	601	0.3%	96.2%	95	AS	14	0.0%	100.0%
26	10	2,440	1.4%	67.9%	61	57	525	0.3%	96.5%	96	KC	9	0.0%	100.0%
27	62	2,388	1.3%	69.2%	62	29	521	0.3%	96.8%	97	254	6	0.0%	100.0%
28	88	2,385	1.3%	70.5%	63	108	486	0.3%	97.1%	98	GH	6	0.0%	100.0%
29	40	2,258	1.3%	71.8%	64	79	455	0.3%	97.3%	entirely contracted				
30	137	2,166	1.2%	73.0%	65	272	446	0.2%	97.6%					
31	24	2,161	1.2%	74.2%	66	210	393	0.2%	97.8%					
32	150	2,151	1.2%	75.4%	67	56	374	0.2%	98.0%					
33	21	2,048	1.1%	76.5%	68	288	367	0.2%	98.2%					
34	107	1,984	1.1%	77.6%	69	287	324	0.2%	98.4%					
35	16	1,959	1.1%	78.7%	70	241	306	0.2%	98.6%					
										Total Boardings		179,668	100.0%	100.0%

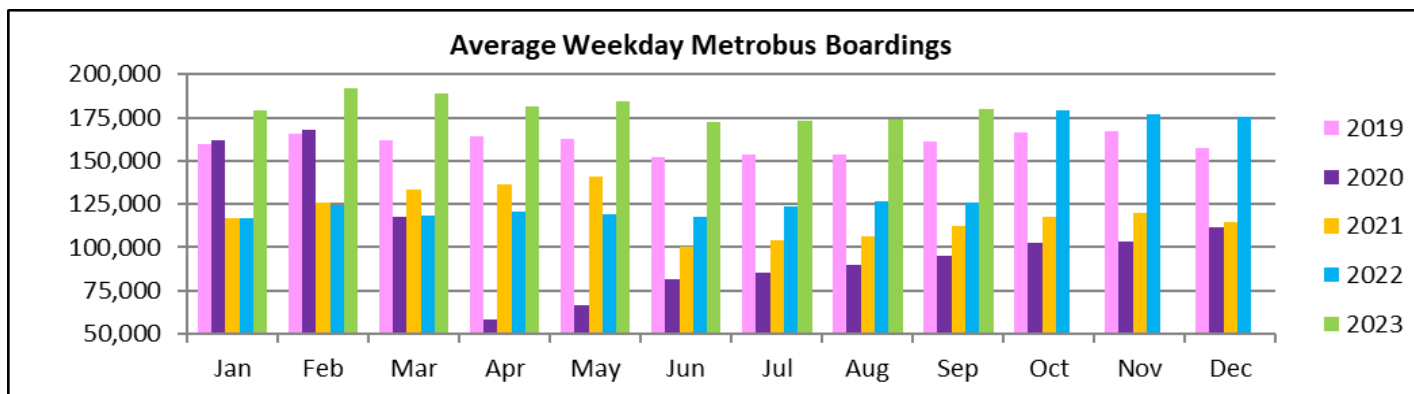
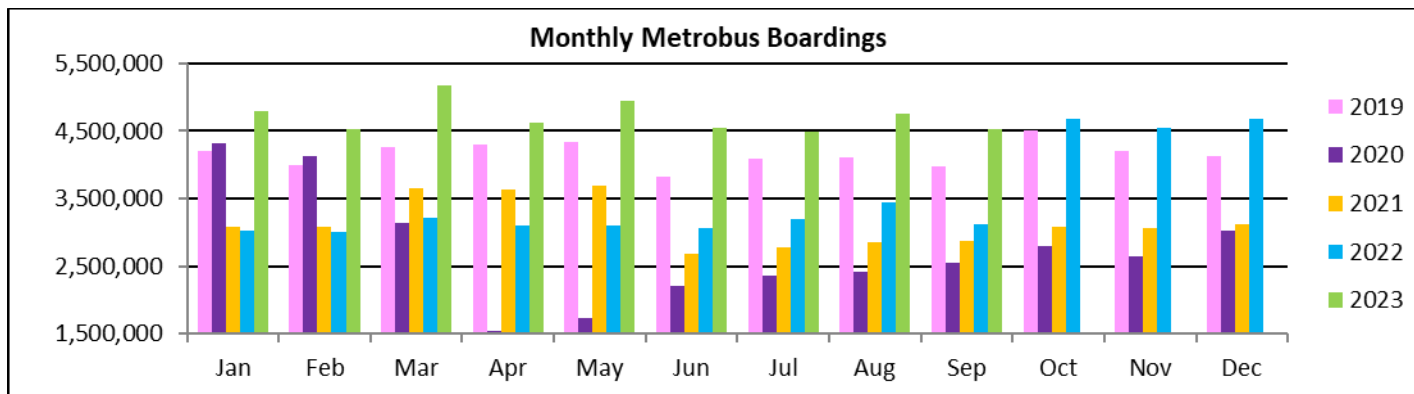
(1) Average weekday ridership rounded to the nearest unit.

(2) Includes the five Lifeline Shuttles that operate on weekdays: Ahepa, Green Hills, Kings Creek, Robert Sharp and Sierra Lakes.

**Bus - Cumulative Percentage Average Weekday Ridership Share
Top 1/4, 1/3, 1/2, 2/3 and 3/4 of Routes**



TOTAL MONTHLY AND AVERAGE WEEKDAY RIDERSHIP YEAR OVER YEAR COMPARISON CHARTS – METROBUS

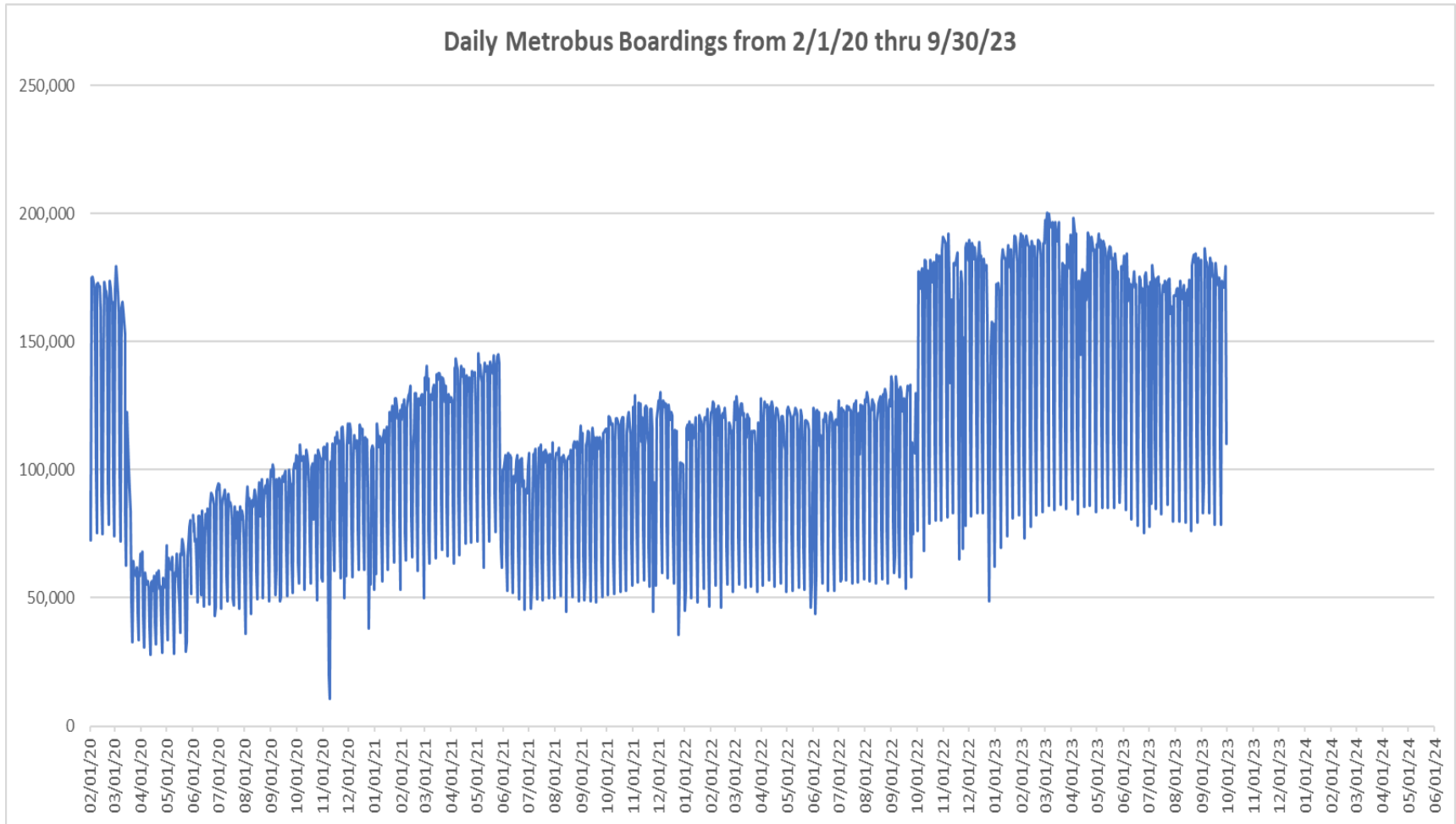


“TOP 5 / BOTTOM 5” BUS ROUTES AVERAGE WEEKDAY RIDERSHIP PERFORMANCE YEAR OVER YEAR COMPARISONS

Route	Sep-23	Sep-22	Absolute Delta (1)	Percent Delta (2)
77	9,456	5,568	3,888	69.8%
11	9,340	6,364	2,975	46.7%
119 - S	9,244	6,566	2,678	40.8%
112 - L	8,249	5,978	2,271	38.0%
9	6,462	4,270	2,191	51.3%
101 - A (*)	177	227	-50	-22.2%
136	149	166	-17	-10.4%
46 - LIBERTY CITY CONN. (*)	19	35	-16	-45.2%
267 - LUDLAM LIMITED (*)	152	160	-8	-5.0%
254 - BROWNSVILLE CIRC. (*)	6	6	0	3.4%

- (1) Averages rounded to the nearest boarding, data as reported by farebox (NFS) and/or automatic passenger counter (APC) system, depending on year; Lifeline shuttles excluded.
- (2) As a result of the SARS-CoV-2 pandemic, rides were fare-free beginning March 22, 2020. Fares were reinstated June 1, 2021, and ridership data from the farebox rather than the APC system is utilized from that date thru the end of September 2022. Beginning October 1, 2022, ridership is again reported from the APC system coupled with a new enhanced sensor system.
- (*) Contracted route.

DAILY METROBUS RIDERSHIP SINCE FEBRUARY 1, 2020



- (1) National Emergency was declared on 3/13/20 as a result of the SARS-CoV-2 pandemic.
- (2) There was no Metrobus, Metrorail and Metromover service on 5/31/20, as a safety precaution, and no service for any of the four modes on 9/28/22 as a result of Hurricane Ian..
- (3) The dip at the start of the second week of November 2020 is due to Hurricane Eta.
- (4) The reduction seen beginning 6/1/21 is partly due to the resumption of fares and partly the result of resuming reporting Cubic farebox data rather than bus APC counts; the jump seen at the start of October 2022 is due to the return to APC bus ridership counts reporting on 10/1/22.
- (5) Periodic (weekly) variations are prominent, since weekday ridership is almost always significantly higher than weekend or holiday ridership.

METROBUS PARKING PATRONAGE SUMMARY

September 2023

PARK-RIDE LOT	ACTUAL AVAILABLE SPACES	ACTUAL OCCUPANCY	PERCENT OCCUPANCY
Transitway / SW 152nd St	200	126	63%
Transitway / SW 168th St (*)	149	0	0%
Transitway / SW 200th Street	100	32	32%
Transitway / SW 112 Ave (Target)	450	122	27%
Transitway / SW 244th St	95	79	83%
Transitway / SW 296th St	139	21	15%
Transitway / SW 344th St	248	169	68%
Coral Reef Drive 117/ Turnpike	95	74	78%
Golden Glades Facility	2,150	310	14%
Hammocks Town Center (SW 152 Ave / SW 104 St)	50	18	36%
Kendall Dr./SW 127th Ave	161	10	6%
West Kendall Transit Term (Kendall Dr / SW162 Ave)	40	10	25%
NW 7th Avenue Transit Village (NW 7 Ave / NW 62 St)	25	20	80%
Miami Gardens Dr. / NW 73rd Ave	136	0	0%
Dolphin Station	348	73	21%
Tamiami Station (eff 11-2022)	442	62	14%
I-75 / Miami Gardens Dr (**)	298	0	0%
TOTAL	5,126	1,126	22%

(*) Closed for construction beginning January 2022

(**) Route 175 Suspended 3/27/2020

Metrorail



September 2023

METRORAIL AVERAGE WEEKDAY BOARDINGS BY STATION (†)

Weekdays	Average Weekday	Average Weekday	Percent Change	Average Weekday	Percent Change	Average Weekday	Percent Change	Average Weekday	Percent Change
STATIONS	Sep-23	Sep-22	YOY	Feb-20	Current vs Feb-20	Aug-23	MOM	Sep-21	YO2Y
ALLAPATTAH	1,584	1,459	8.5%	1,942	-18.4%	1,528	3.6%	1,006	57.4%
BRICKELL	5,097	4,442	14.7%	6,529	-21.9%	4,862	4.8%	3,268	55.9%
BROWNSVILLE	681	665	2.3%	862	-21.0%	510	33.4%	570	19.5%
CIVIC CENTER	4,469	3,612	23.7%	6,143	-27.2%	4,266	4.8%	2,880	55.2%
COCONUT GROVE	1,346	1,273	5.7%	1,795	-25.0%	1,252	7.5%	1,004	34.1%
CULMER	1,024	883	15.9%	1,392	-26.5%	933	9.7%	760	34.8%
DADELAND NORTH	4,055	3,532	14.8%	5,926	-31.6%	3,810	6.4%	2,627	54.4%
DADELAND SOUTH	4,607	3,919	17.6%	7,150	-35.6%	4,351	5.9%	3,118	47.8%
DOUGLAS ROAD	2,702	2,663	1.4%	3,624	-25.4%	2,583	4.6%	2,067	30.7%
DR. MARTIN LUTHER KING, JR.	860	774	11.2%	1,157	-25.6%	808	6.5%	643	33.8%
EARLINGTON HEIGHTS	1,308	1,170	11.8%	1,662	-21.3%	1,273	2.8%	889	47.1%
GOVERNMENT CENTER	6,768	5,833	16.0%	10,557	-35.9%	6,263	8.1%	4,382	54.5%
HIALEAH	891	1,044	-14.7%	1,253	-28.9%	748	19.0%	756	17.9%
MIAMI INTERNATIONAL AIRPORT	1,319	1,101	19.8%	1,711	-22.9%	1,281	3.0%	665	98.5%
NORTHSIDE	1,241	1,155	7.5%	1,476	-15.9%	1,144	8.5%	862	43.9%
OKEECHOBEE	857	792	8.3%	1,164	-26.4%	839	2.1%	616	39.3%
OVERTOWN/ ARENA	1,716	1,305	31.5%	2,274	-24.6%	1,657	3.5%	824	108.1%
PALMETTO	1,247	1,111	12.2%	1,543	-19.2%	1,193	4.6%	833	49.7%
SANTA CLARA	672	557	20.7%	812	-17.2%	623	7.9%	415	62.2%
SOUTH MIAMI	2,033	1,822	11.6%	3,015	-32.6%	1,785	13.9%	1,449	40.3%
TRI-RAIL	1,067	913	16.9%	1,207	-11.6%	997	7.0%	723	47.6%
UNIVERSITY	2,305	1,970	17.0%	2,784	-17.2%	1,664	38.5%	1,393	65.5%
VIZCAYA	1,068	1,012	5.5%	1,390	-23.1%	973	9.8%	753	41.9%
TOTAL	48,917	43,007	13.7%	67,367	-27.4%	45,342	7.9%	32,502	50.5%

(†) In this table and those which follow, "YOY" stands for "year-over-year", "MOM" for "month-over-month" and "YO2Y" for "year over two years", i.e., current month vs 12 months prior, one month prior and 24 months prior, respectively.

METRORAIL AVERAGE SATURDAY BOARDINGS BY STATION

Saturdays	Average Saturday	Average Saturday	Percent Change	Average Saturday	Percent Change	Average Saturday	Percent Change	Average Saturday	Percent Change
STATIONS	Sep-23	Sep-22	YOY	Feb-20	Current vs Feb-20	Aug-23	MOM	Sep-21	YO2Y
ALLAPATTAH	772	856	-9.8%	1,051	-26.6%	860	-10.2%	577	33.9%
BRICKELL	2,216	2,215	0.0%	2,811	-21.2%	2,307	-4.0%	1,596	38.8%
BROWNSVILLE	398	402	-0.8%	520	-23.3%	311	28.1%	367	8.6%
CIVIC CENTER	736	657	12.0%	959	-23.3%	727	1.2%	466	57.9%
COCONUT GROVE	645	690	-6.4%	928	-30.5%	650	-0.7%	526	22.8%
CULMER	462	435	6.2%	721	-35.9%	451	2.4%	342	35.1%
DADELAND NORTH	1,311	1,339	-2.0%	1,994	-34.2%	1,354	-3.1%	1,003	30.8%
DADELAND SOUTH	1,803	1,748	3.2%	2,625	-31.3%	1,832	-1.6%	1,366	32.0%
DOUGLAS ROAD	879	1,135	-22.5%	1,319	-33.4%	1,009	-12.9%	817	7.6%
DR. MARTIN LUTHER KING, JR.	370	437	-15.3%	625	-40.7%	471	-21.4%	326	13.5%
EARLINGTON HEIGHTS	632	698	-9.5%	935	-32.5%	725	-12.8%	507	24.6%
GOVERNMENT CENTER	2,464	2,494	-1.2%	4,262	-42.2%	2,621	-6.0%	1,844	33.6%
HIALEAH	412	498	-17.3%	583	-29.3%	371	11.1%	380	8.5%
MIAMI INTERNATIONAL AIRPORT	936	934	0.3%	1,330	-29.6%	1,009	-7.2%	520	80.0%
NORTHSIDE	727	732	-0.7%	878	-17.2%	749	-2.9%	528	37.7%
OKEECHOBEE	298	296	0.6%	408	-27.1%	302	-1.3%	262	13.5%
OVERTOWN/ ARENA	548	487	12.6%	678	-19.2%	610	-10.2%	300	82.4%
PALMETTO	360	353	1.9%	458	-21.4%	353	1.9%	243	48.1%
SANTA CLARA	321	331	-2.9%	422	-23.8%	315	2.0%	215	49.3%
SOUTH MIAMI	868	913	-4.9%	1,256	-30.9%	840	3.3%	647	34.1%
TRI-RAIL	477	434	9.8%	614	-22.3%	499	-4.4%	336	42.1%
UNIVERSITY	658	622	5.8%	714	-7.9%	544	20.9%	440	49.6%
VIZCAYA	470	464	1.4%	622	-24.4%	445	5.6%	329	42.7%
TOTAL	18,763	19,168	-2.1%	26,714	-29.8%	19,352	-3.0%	13,936	34.6%

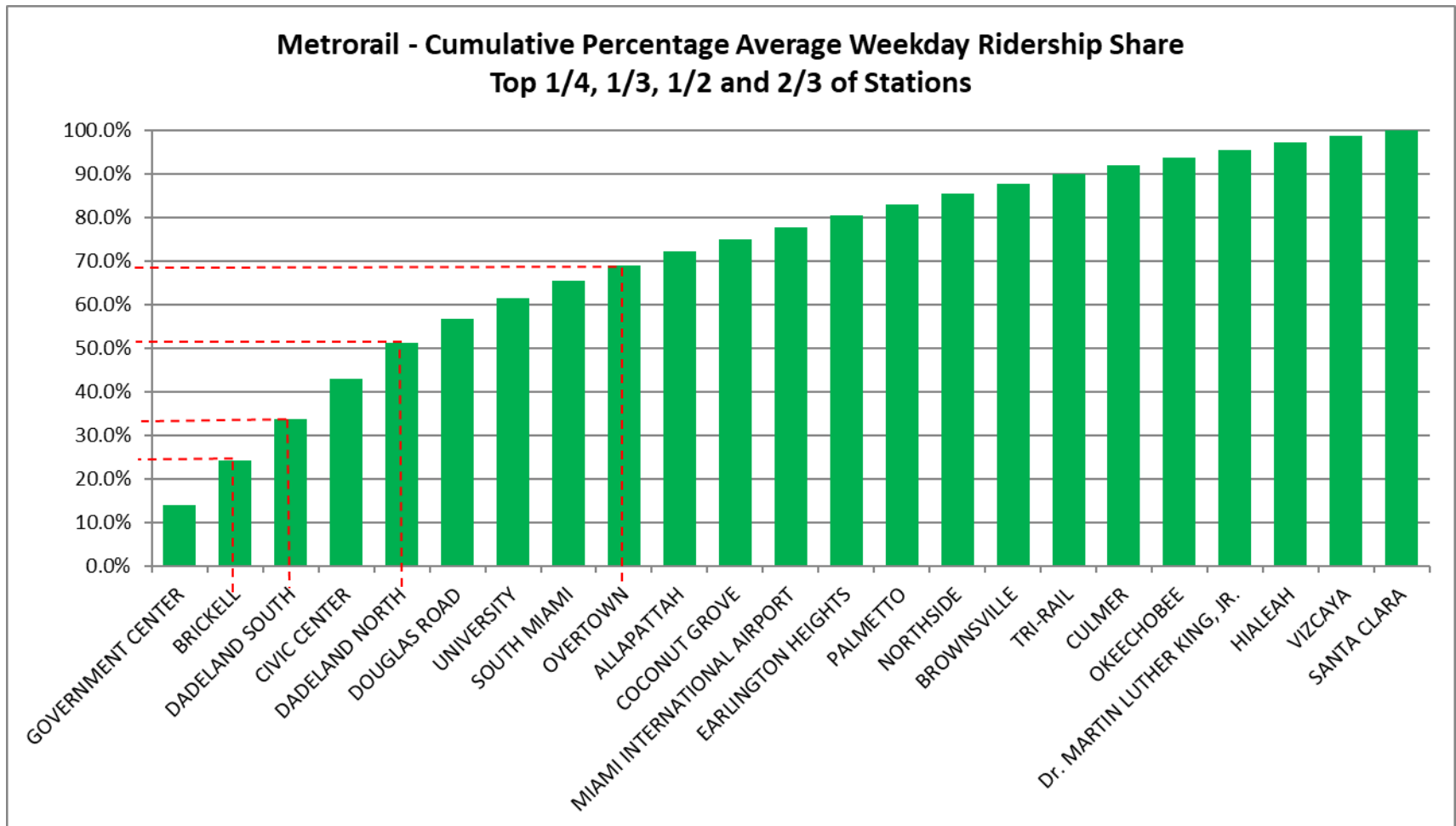
METRORAIL AVERAGE SUNDAY BOARDINGS BY STATION

Sundays	Average Sunday	Average Sunday	Percent Change	Average Sunday	Percent Change	Average Sunday	Percent Change	Average Sunday	Percent Change
STATIONS	Sep-23	Sep-22	YOY	Feb-20	Current vs Feb-20	Aug-23	MOM	Sep-21	YO2Y
ALLAPATTAH	580	576	0.7%	791	-26.7%	634	-8.6%	412	40.8%
BRICKELL	1,676	1,763	-4.9%	2,379	-29.5%	1,666	0.6%	1,271	31.9%
BROWNSVILLE	267	315	-15.0%	406	-34.2%	219	22.2%	252	6.2%
CIVIC CENTER	553	536	3.1%	791	-30.2%	579	-4.5%	345	60.0%
COCONUT GROVE	467	494	-5.5%	838	-44.3%	483	-3.4%	427	9.4%
CULMER	325	316	2.9%	616	-47.2%	323	0.8%	296	10.0%
DADELAND NORTH	970	1,008	-3.7%	1,685	-42.4%	958	1.3%	820	18.4%
DADELAND SOUTH	1,365	1,346	1.4%	2,210	-38.2%	1,405	-2.9%	1,089	25.4%
DOUGLAS ROAD	580	796	-27.2%	1,090	-46.8%	754	-23.1%	593	-2.2%
DR. MARTIN LUTHER KING, JR.	350	352	-0.5%	506	-30.9%	320	9.5%	254	37.7%
EARLINGTON HEIGHTS	527	532	-0.9%	799	-34.1%	533	-1.1%	376	40.0%
GOVERNMENT CENTER	1,923	1,876	2.5%	4,044	-52.5%	2,031	-5.3%	1,384	38.9%
HIALEAH	288	374	-23.0%	472	-39.0%	267	8.0%	266	8.5%
MIAMI INTERNATIONAL AIRPORT	928	846	9.6%	1,343	-30.9%	920	0.8%	565	64.2%
NORTHSIDE	554	547	1.3%	653	-15.1%	580	-4.6%	427	29.8%
OKEECHOBEE	186	165	12.6%	273	-31.9%	187	-0.3%	146	27.4%
OVERTOWN/ ARENA	417	389	7.4%	544	-23.3%	428	-2.6%	260	60.8%
PALMETTO	201	208	-3.5%	336	-40.2%	220	-8.5%	148	35.8%
SANTA CLARA	201	220	-8.5%	280	-28.1%	217	-7.4%	147	37.2%
SOUTH MIAMI	623	643	-3.2%	987	-36.9%	599	4.0%	484	28.7%
TRI-RAIL	339	351	-3.4%	528	-35.8%	327	3.7%	278	21.9%
UNIVERSITY	487	524	-7.0%	608	-19.9%	411	18.5%	360	35.3%
VIZCAYA	308	345	-10.7%	524	-41.2%	311	-0.8%	268	14.9%
TOTAL	14,113	14,518	-2.8%	22,701	-37.8%	14,369	-1.8%	10,865	29.9%

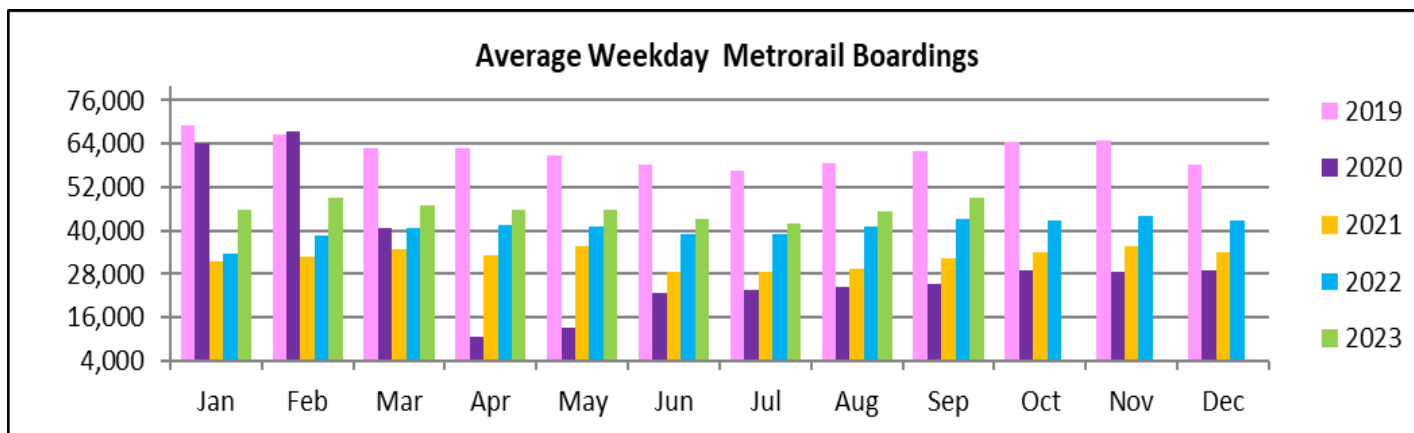
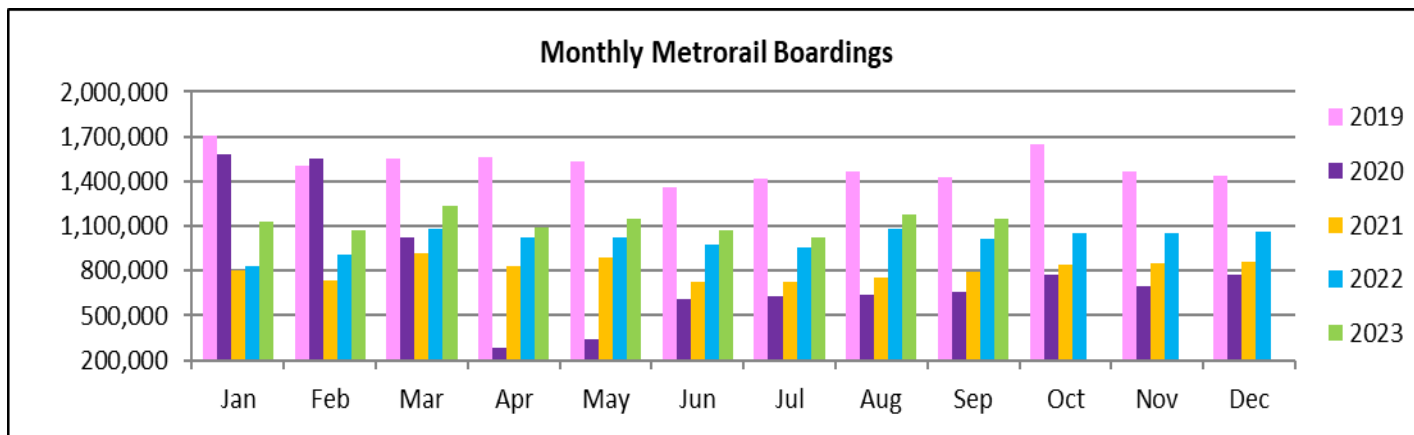
METRORAIL TOTAL MONTHLY BOARDINGS BY STATION

Monthly Totals	Total Month	Total Month	Percent Change	Total Month	Percent Change	Total Month	Percent Change	Total Month	Percent Change
STATIONS	Sep-23	Sep-22	YOY	Feb-20	Current vs Feb-20	Aug-23	MOM	Sep-21	YO2Y
ALLAPATTAH	38,642	35,612	8.5%	46,868	-17.6%	41,128	-6.0%	25,620	50.8%
BRICKELL	122,044	106,840	14.2%	152,259	-19.8%	127,727	-4.4%	81,807	49.2%
BROWNSVILLE	17,002	16,529	2.9%	21,285	-20.1%	13,852	22.7%	14,787	15.0%
CIVIC CENTER	96,104	77,654	23.8%	128,921	-25.5%	103,341	-7.0%	64,252	49.6%
COCONUT GROVE	32,636	30,856	5.8%	43,580	-25.1%	33,318	-2.0%	25,339	28.8%
CULMER	24,511	21,085	16.2%	33,497	-26.8%	24,550	-0.2%	18,869	29.9%
DADELAND NORTH	92,788	81,262	14.2%	132,894	-30.2%	96,871	-4.2%	63,476	46.2%
DADELAND SOUTH	108,323	92,351	17.3%	162,416	-33.3%	113,014	-4.2%	76,684	41.3%
DOUGLAS ROAD	61,807	62,096	-0.5%	82,141	-24.8%	66,449	-7.0%	49,896	23.9%
DR. MARTIN LUTHER KING, JR.	20,894	19,027	9.8%	27,980	-25.3%	21,736	-3.9%	16,172	29.2%
EARLINGTON HEIGHTS	32,136	28,918	11.1%	40,697	-21.0%	34,297	-6.3%	22,688	41.6%
GOVERNMENT CENTER	157,399	136,400	15.4%	243,414	-35.3%	162,662	-3.2%	106,675	47.6%
HIALEAH	21,349	24,791	-13.9%	29,516	-27.7%	19,762	8.0%	18,776	13.7%
MIAMI INTERNATIONAL AIRPORT	35,981	30,143	19.4%	46,115	-22.0%	37,176	-3.2%	19,041	89.0%
NORTHSIDE	31,352	28,908	8.5%	36,127	-13.2%	28,009	11.9%	22,449	39.7%
OKEECHOBEE	19,676	17,965	9.5%	26,026	-24.4%	21,260	-7.5%	14,787	33.1%
OVERTOWN/ ARENA	39,226	30,017	30.7%	49,911	-21.4%	42,271	-7.2%	19,870	97.4%
PALMETTO	27,844	24,757	12.5%	33,944	-18.0%	29,725	-6.3%	19,296	44.3%
SANTA CLARA	16,110	13,595	18.5%	19,245	-16.3%	16,453	-2.1%	10,347	55.7%
SOUTH MIAMI	48,248	43,268	11.5%	69,412	-30.5%	46,800	3.1%	35,502	35.9%
TRI-RAIL	25,504	21,798	17.0%	29,120	-12.4%	26,239	-2.8%	18,026	41.5%
UNIVERSITY	51,915	44,562	16.5%	61,253	-15.2%	42,100	23.3%	32,855	58.0%
VIZCAYA	25,373	23,897	6.2%	32,497	-21.9%	25,398	-0.1%	18,535	36.9%
TOTAL	1,146,864	1,012,331	13.3%	1,549,118	-26.0%	1,174,138	-2.3%	795,749	44.1%

METRORAIL CUMULATIVE PERCENTAGE RIDERSHIP SHARE



TOTAL MONTHLY AND AVERAGE WEEKDAY RIDERSHIP YEAR OVER YEAR COMPARISON CHARTS – METRORAIL



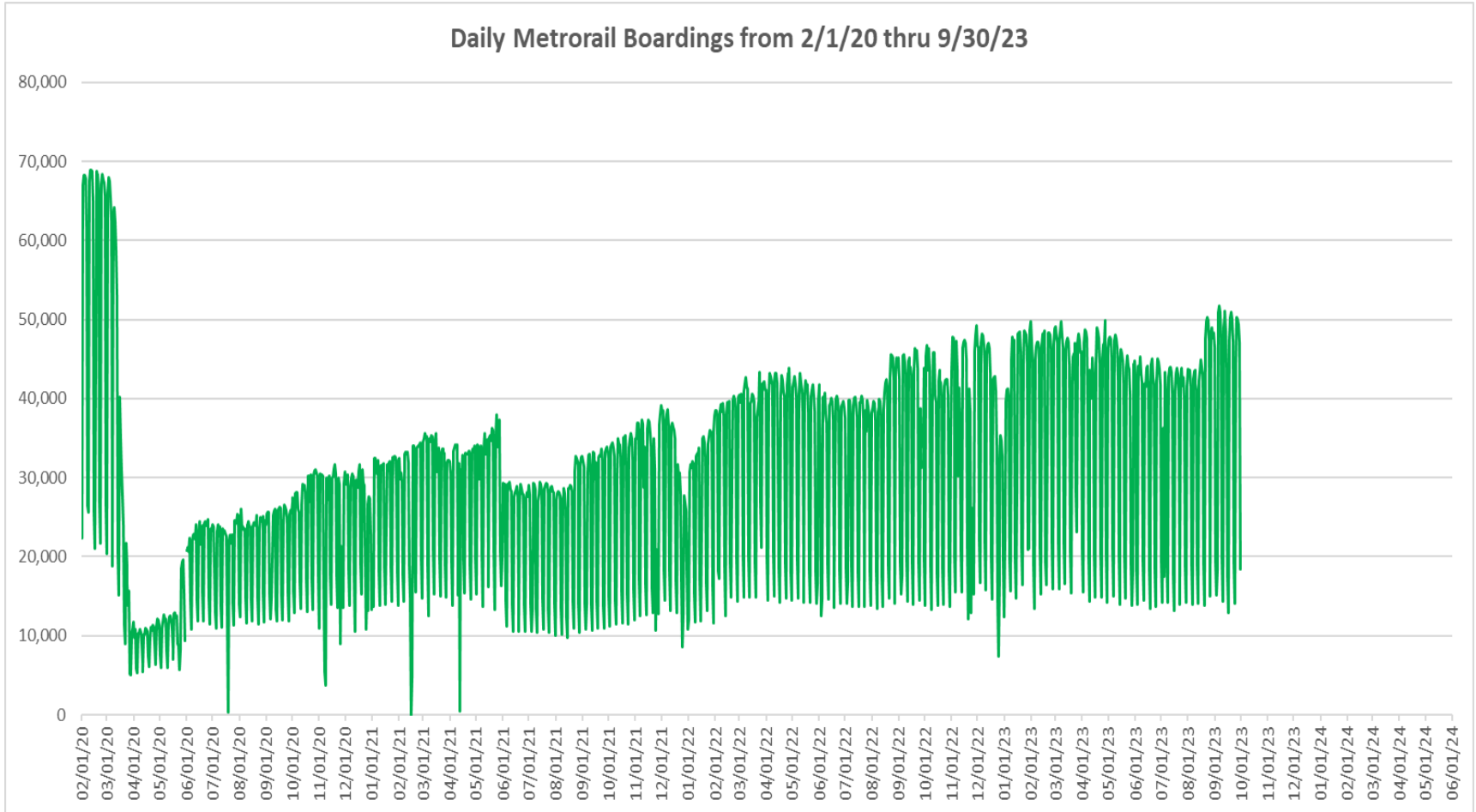
“TOP 5 / BOTTOM 5” RAIL STATIONS AVERAGE WEEKDAY RIDERSHIP PERFORMANCE YEAR OVER YEAR COMPARISONS

Station	Sep-23	Sep-22	Absolute Delta (1)	Percent Delta
GOVERNMENT CENTER	6,768	5,833	935	16.0%
CIVIC CENTER	4,469	3,612	857	23.7%
DADELAND SOUTH	4,607	3,919	688	17.6%
BRICKELL	5,097	4,442	655	14.7%
DADELAND NORTH	4,055	3,532	523	14.8%
HIALEAH	891	1,044	-154	-14.7%
BROWNSVILLE	681	665	15	2.3%
DOUGLAS ROAD	2,702	2,663	38	1.4%
VIZCAYA	1,068	1,012	56	5.5%
OKEECHOBEE	857	792	65	8.3%

(1) Averages rounded to the nearest boarding.

(2) As a result of the SARS-CoV-2 pandemic, rides were fare-free beginning March 22, 2020; nearly all rail stations continued reporting YOY gains in September 2023, as September 2022 still showed clear reduction effects on ridership from the SARS-CoV-2 pandemic. Fares were reinstated June 1, 2021, and ridership data from the faregate system rather than the video camera counter system is utilized from that date going forward.

DAILY METRORAIL RIDERSHIP SINCE FEBRUARY 1, 2020



- (1) National Emergency was declared on 3/13/20 as a result of the SARS-CoV-2 pandemic.
- (2) There was no Metrobus, Metrorail and Metromover service on 5/31/20, as a safety precaution, and no service for any of the four modes on 9/28/22 as a result of Hurricane Ian..
- (3) The dip at the start of the second week of November 2020 is due to Hurricane Eta; these are *raw data* from the Unleash Live contractor AI video system.
- (4) The dip on 4/13/21 is due to a loss of connectivity at all stations, affecting a few stations over the next two days as well.
- (5) The reduction seen beginning 6/1/21 is partly due to the resumption of fares and partly the result of resuming reporting Cubic faregate data rather than video camera counts.
- (6) Periodic (weekly) variations are prominent, since weekday ridership is almost always significantly higher than weekend or holiday ridership.

METRORAIL PARKING PATRONAGE SUMMARY

September 2023

PARK-RIDE LOT	ACTUAL CAPACITY (1)	ACTUAL OCCUPANCY (2)	PERCENT OCCUPANCY
DADELAND SOUTH	1,260	753	60%
DADELAND NORTH	1,963	730	37%
SOUTH MIAMI	1,081	238	22%
UNIVERSITY	260	172	66%
DOUGLAS ROAD	222	0	0%
COCONUT GROVE	100	60	60%
VIZCAYA	120	45	37%
CULMER	25	16	63%
SANTA CLARA	61	41	66%
ALLAPATTAH	74	8	11%
EARLINGTON HEIGHTS	361	145	40%
BROWNSVILLE	100	71	71%
DR. MARTIN LUTHER KING JR. (MDT)	62	0	0%
DR. MARTIN LUTHER KING JR. (GARAGE)	631	0	0%
NORTHSIDE	100	74	74%
HIALEAH	338	39	12%
OKEECHOBEE	1,398	137	10%
PALMETTO	700	139	20%
TOTAL	8,856	2,666	30%

- (1) Number of spaces could vary each week; shown are available spaces during final week of month, as submitted by DTPW Safety & Security office.
- (2) All sampled occupancy data provided by DTPW Safety & Security office; calculations are revisions to those submitted by that entity.
- (3) Daily averages rounded to nearest unit, with fewer counts at some stations due to shortage of DTPW Safety & Security office staff; calculations are based on sampled counted days only per raw data submitted, with resulting average daily occupancy shown.
- (*) Closed throughout the month, per the DTPW Safety & Security office.

Metromover

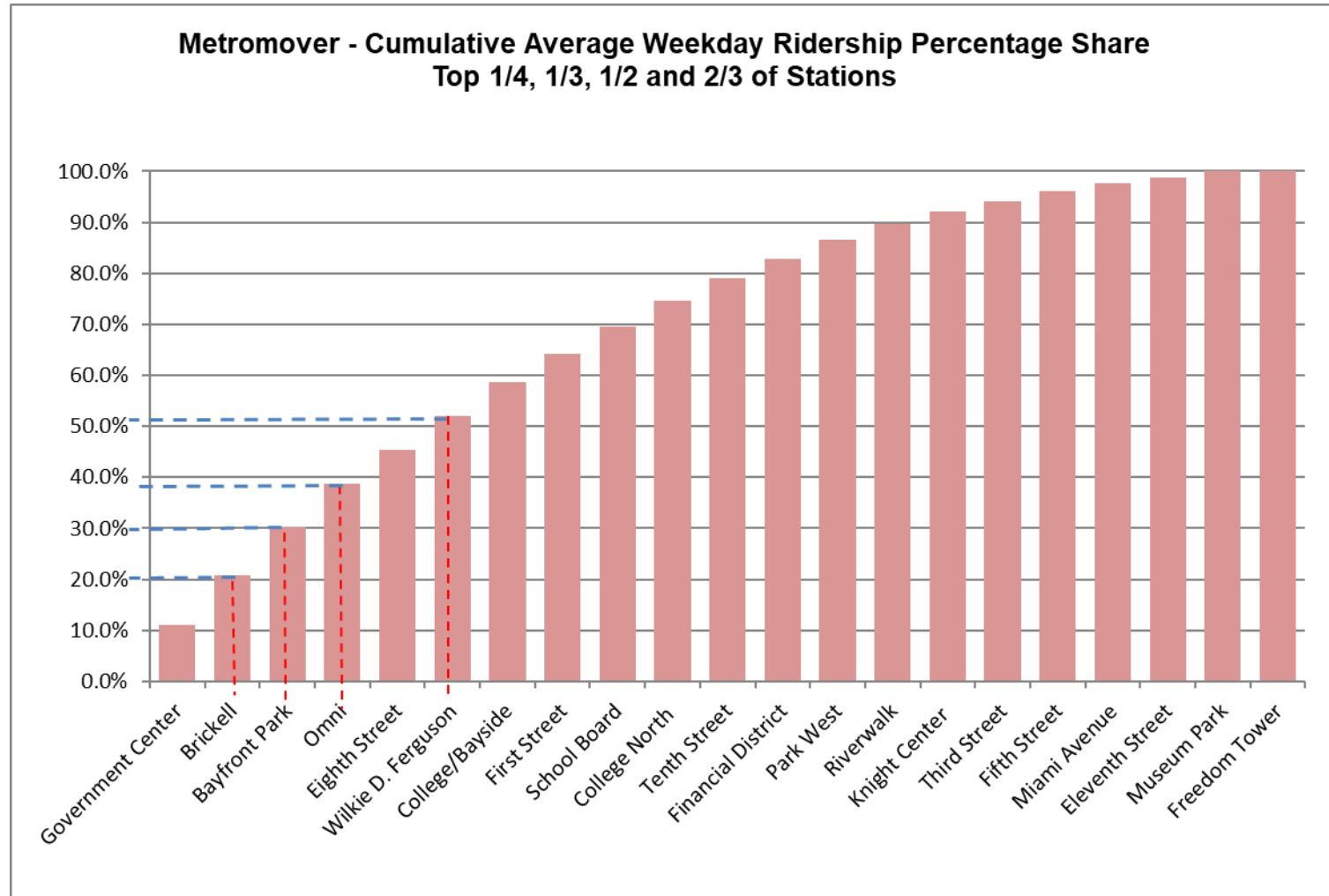


METROMOVER MONTHLY AND AVERAGE DAILY BOARDINGS BY STATION

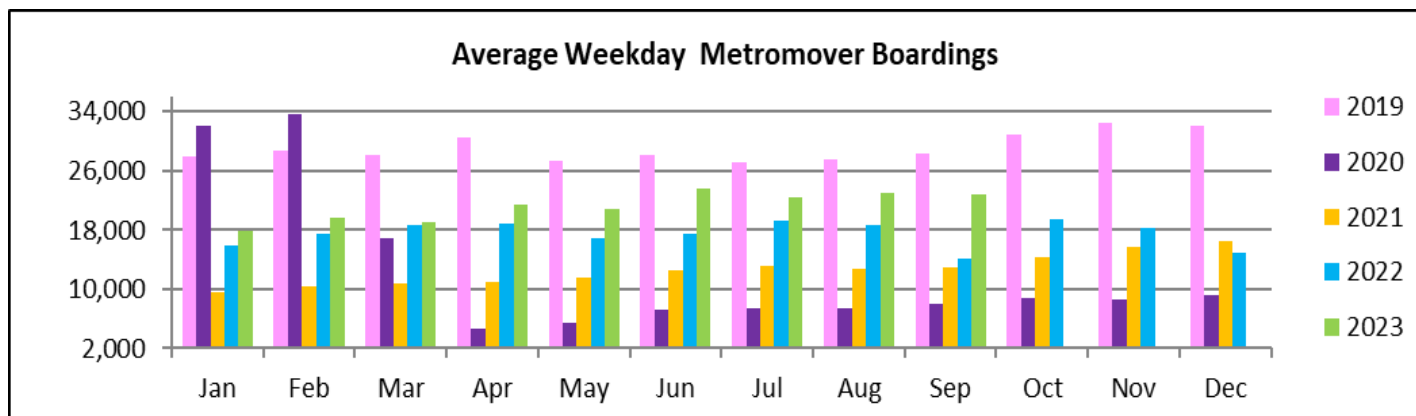
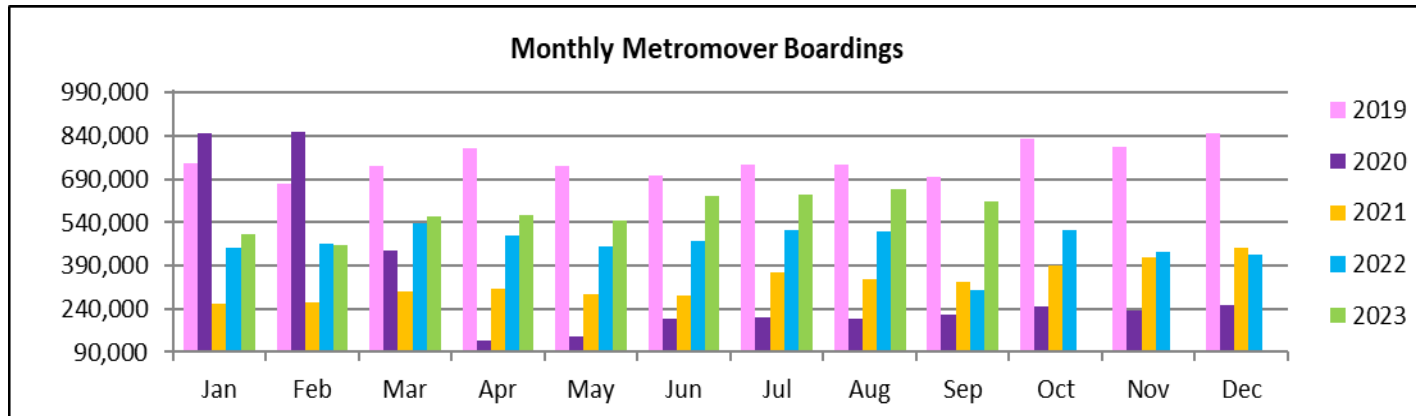
	Average Weekday	Average Weekday	Percent Change	Average Saturday	Average Saturday	Percent Change	Average Sunday	Average Sunday	Percent Change	Total Monthly	Total Monthly	Percent Change
STATIONS	Sep-23	Sep-22	23 vs 22	Sep-23	Sep-22	23 vs 22	Sep-23	Sep-22	23 vs 22	Sep-23	Sep-22	23 vs 22
School Board	1,260	788	59.8%	934	612	52.6%	848	566	49.7%	34,118	21,083	61.8%
Omni	1,900	1,365	39.2%	1,308	1,008	29.7%	1,166	929	25.6%	50,563	36,014	40.4%
Museum Park	262			422			413			9,529		
Eleventh Street	280	198	41.6%	241	240	0.8%	207	164	26.6%	7,895	5,747	37.4%
Park West	831	316	163.1%	757	385	96.8%	534	296	80.5%	23,113	6,471	257.2%
Freedom Tower												
Government Center	2,533			1,743			1,369			66,425		
Miami Avenue	362	307	18.0%	274	257	6.8%	238	167	42.2%	9,814	6,062	61.9%
Third Street	450	279	61.5%	333	237	40.4%	275	195	40.7%	12,161	5,678	114.2%
Knight Center	582	514	13.1%	328	395	-16.8%	251	282	-11.0%	14,564	13,268	9.8%
Bayfront Park	2,179	1,611	35.3%	1,572	1,290	21.9%	1,349	1,139	18.5%	58,157	42,902	35.6%
First Street	1,265	627	101.8%	1,028	551	86.5%	883	478	84.7%	34,866	5,415	543.9%
College/Bayside	1,507	1,238	21.7%	1,174	1,034	13.5%	1,027	891	15.3%	41,136	11,827	247.8%
College North	1,117	713	56.8%	645	454	42.3%	471	351	34.1%	28,016	12,042	132.7%
Wilkie D. Ferguson	1,521	1,185	28.3%	1,043	782	33.4%	756	611	23.8%	39,551	23,806	66.1%
Riverwalk	720	116	521.1%	557	79	610.1%	417	64	549.0%	19,264	2,930	557.5%
Fifth Street	432	318	35.6%	317	266	19.3%	263	192	36.8%	11,596	8,450	37.2%
Eighth Street	1,525	1,639	-6.9%	1,201	1,563	-23.2%	1,123	1,262	-11.0%	42,439	45,094	-5.9%
Tenth Street	1,046	608	72.1%	758	557	36.1%	616	435	41.8%	27,809	16,550	68.0%
Brickell	2,226	1,446	53.9%	1,510	1,333	13.3%	1,233	1,111	10.9%	58,370	27,407	113.0%
Financial District	859	862	-0.3%	443	484	-8.5%	374	434	-13.9%	21,424	14,439	48.4%
TOTAL	22,856	14,130	61.8%	16,590	11,526	43.9%	13,813	9,568	44.4%	610,810	305,185	100.1%

(1) Freedom Tower Station was closed for construction.

METROMOVER CUMULATIVE PERCENTAGE RIDERSHIP SHARE



TOTAL MONTHLY AND AVERAGE WEEKDAY RIDERSHIP YEAR OVER YEAR COMPARISON CHARTS – METROMOVER

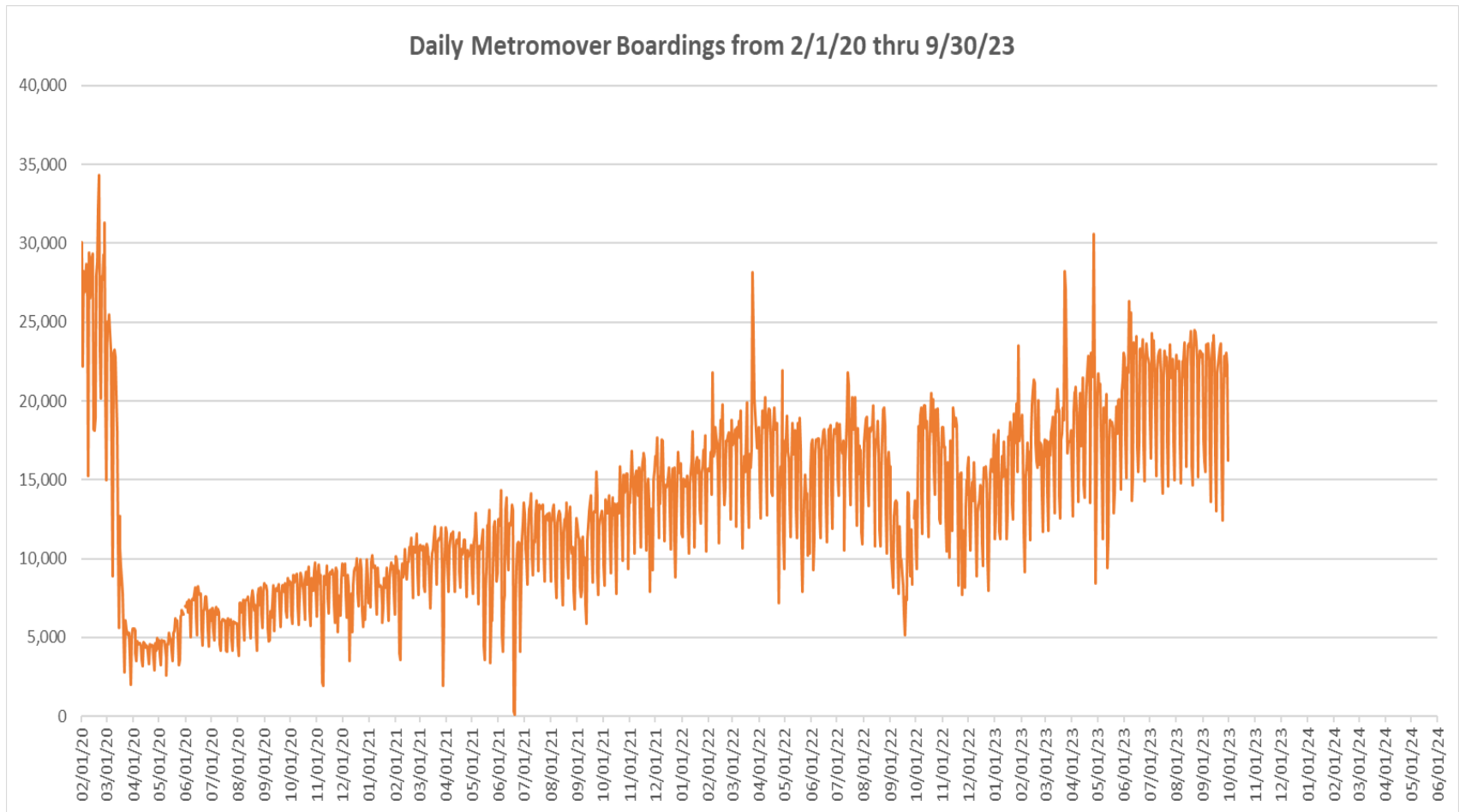


**“TOP 5 / BOTTOM 5” MOVER STATIONS AVERAGE WEEKDAY RIDERSHIP PERFORMANCE
YEAR OVER YEAR COMPARISONS**

Station	Sep-23	Sep-22	Absolute Delta (1)	Percent Delta
Brickell	2,226	1,446	780	53.9%
First Street	1,265	627	638	101.8%
Riverwalk	720	116	604	521.1%
Bayfront Park	2,179	1,611	569	35.3%
Omni	1,900	1,365	535	39.2%
Eighth Street	1,525	1,639	-114	-6.9%
Financial District	859	862	-3	-0.3%
Miami Avenue	362	307	55	18.0%
Knight Center	582	514	67	13.1%
Eleventh Street	280	198	82	41.6%

(1) Averages rounded to the nearest boarding.

DAILY METROMOVER RIDERSHIP SINCE FEBRUARY 1, 2020



- (1) National Emergency was declared on 3/13/20 as a result of the SARS-CoV-2 pandemic.
- (2) There was no Metrobus, Metrorail and Metromover service on 5/31/20, as a safety precaution, and no service for any of the four modes on 9/28/22 as a result of Hurricane Ian..
- (3) The dip at the start of the second week of November 2020 is due to Hurricane Eta; these are *raw data* from the UTA contractor APC system. Other more recent dips are due to various station closures (mostly on weekends) for system maintenance purposes.
- (4) Periodic (weekly) variations are prominent, since weekday ridership is almost always significantly higher than weekend or holiday ridership.

Special Transportation Services



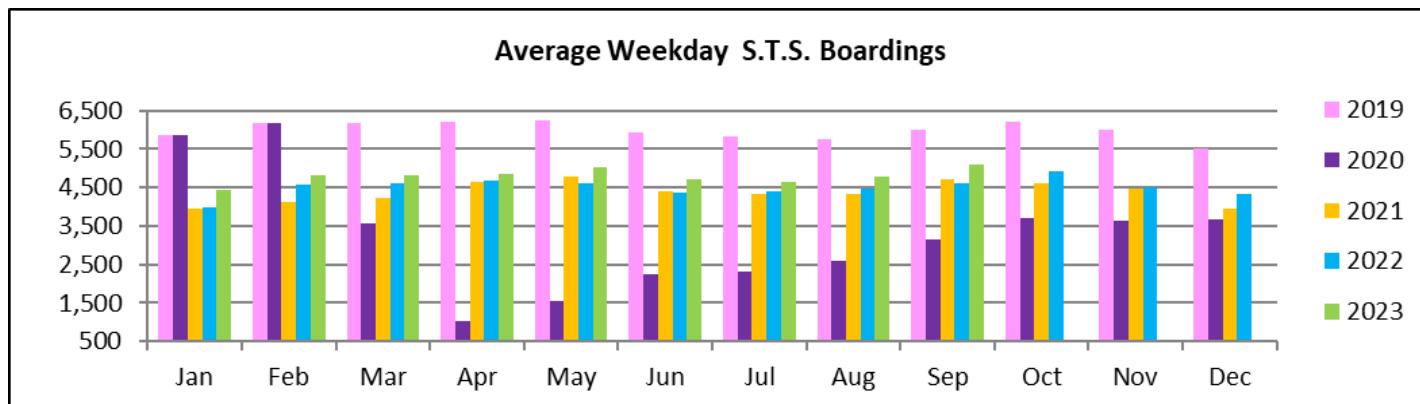
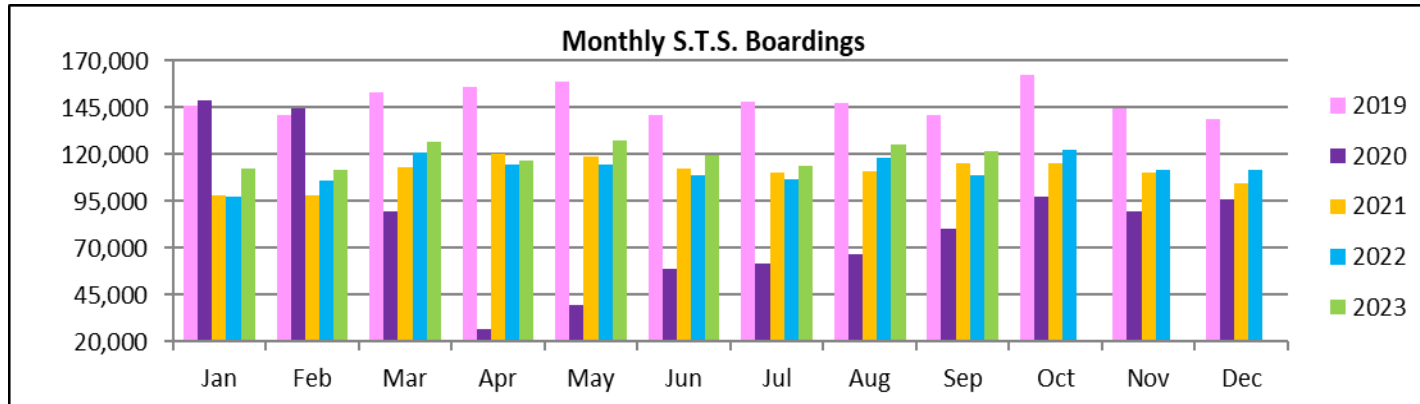
STS MONTHLY AND AVERAGE DAILY BOARDINGS

September 2023

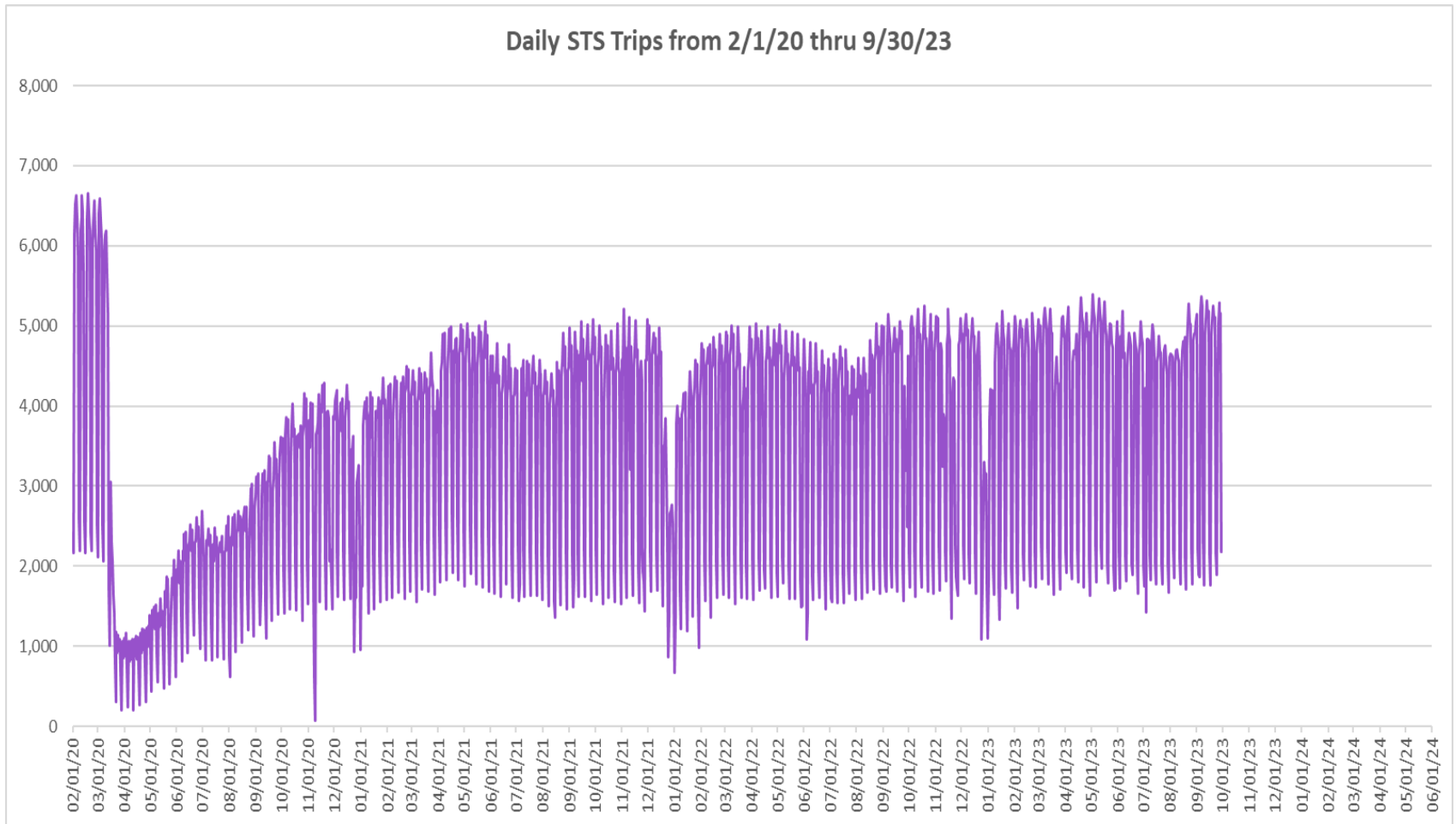
Measure	timeline	Ambulatory	Wheelchair	Total Clients (*)
Average Weekday	Sep-23	4,266	831	5,097
Average Saturday	Sep-23	1,790	401	2,191
Average Sunday	Sep-23	1,489	345	1,834
Total Monthly	Sep-23	101,708	20,357	122,065
Average Weekday	Sep-22	3,817	795	4,612
Average Saturday	Sep-22	1,662	373	2,035
Average Sunday	Sep-22	1,359	325	1,684
Total Monthly	Sep-22	89,777	19,011	108,788
Average Weekday	Sep-21	3,869	831	4,700
Average Saturday	Sep-21	1,732	410	2,142
Average Sunday	Sep-21	1,350	278	1,628
Total Monthly	Sep-21	94,924	20,482	115,406
% Change Current vs. September 2022 Weekday		11.8%	4.6%	10.5%
% Change Current vs. September 2022 Saturday		7.7%	7.6%	7.7%
% Change Current vs. September 2022 Sunday		9.6%	6.2%	8.9%
% Change Current vs. September 2022 Month Total		13.3%	7.1%	12.2%
% Change Current vs. September 2021 Weekday		10.3%	0.0%	8.4%
% Change Current vs. September 2021 Saturday		3.3%	-2.1%	2.3%
% Change Current vs. September 2021 Sunday		10.3%	24.1%	12.7%
% Change Current vs. September 2021 Month Total		7.1%	-0.6%	5.8%

(*) Trip count data provided by STS contractor.

TOTAL MONTHLY AND AVERAGE WEEKDAY RIDERSHIP YEAR OVER YEAR COMPARISON CHARTS – SPECIAL TRANSPORTATION SERVICES (S.T.S.)

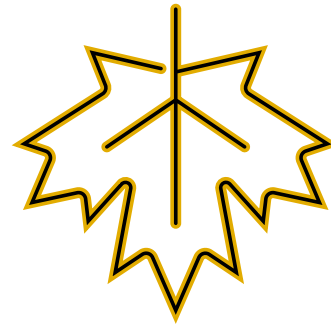
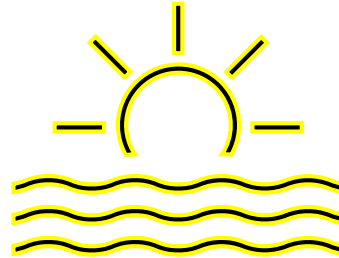
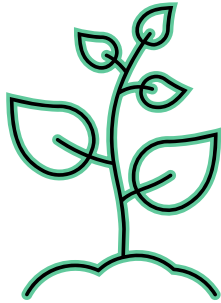


DAILY STS RIDERSHIP SINCE FEBRUARY 1, 2020

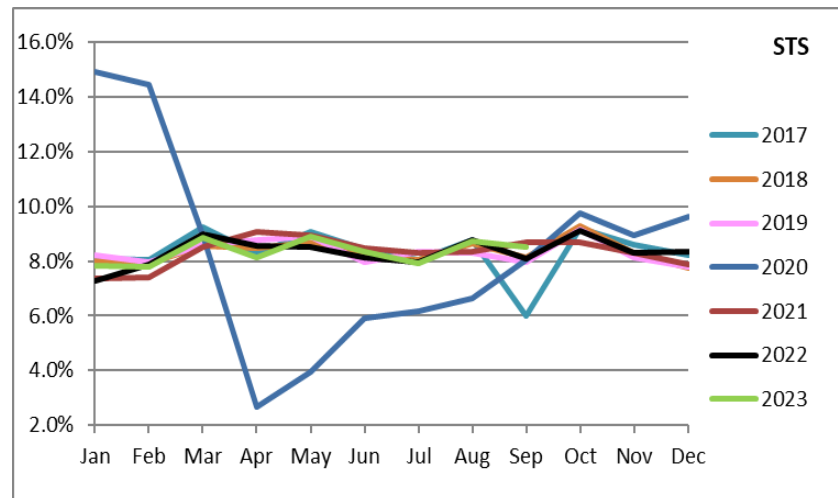
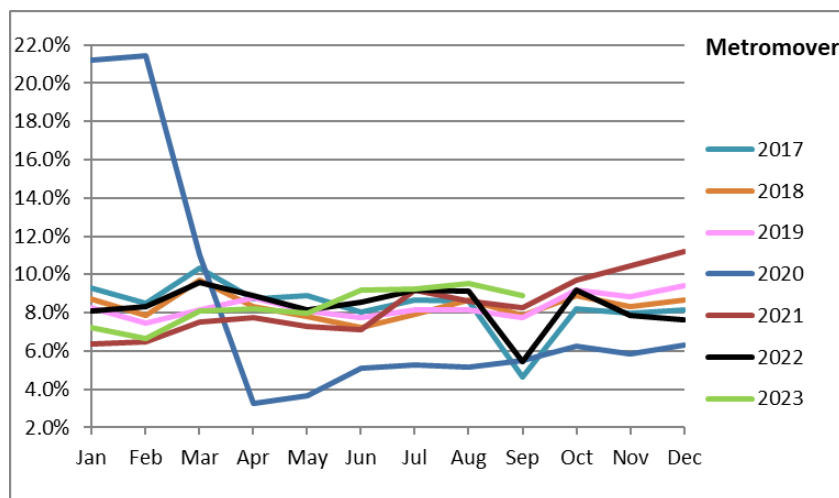
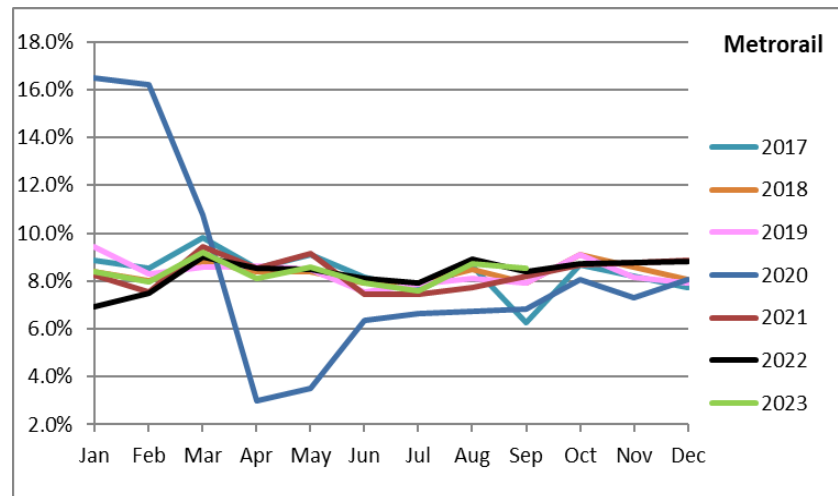
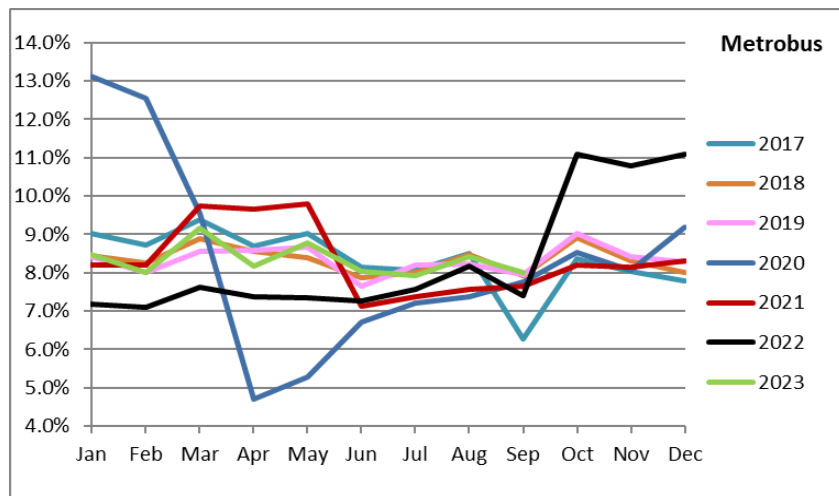


- (1) National Emergency was declared on 3/13/20 as a result of the SARS-CoV-2 pandemic.
- (2) There was no service (for any of the four modes) on 9/28/22 as a result of Hurricane Ian.
- (3) The dip at the start of the second week of November 2020 is due to Hurricane Eta.
- (4) Periodic (weekly) variations are prominent, since weekday ridership is almost always significantly higher than weekend or holiday ridership.

Ridership Seasonality



RIDERSHIP SEASONALITY – PERCENT RIDERSHIP SHARE BY MONTH AND CALENDAR YEAR FOR EACH MODE



Note: the prominent dips seen in the fall of 2017 and beginning in the spring of 2020 are due to Hurricane Irma and the SARS-CoV-2 pandemic, respectively. Reductions in Bus and Rail ridership share seen beginning in June 2021 are due to reinstatement of fares as well changes in reporting tools and datasets, as discussed earlier in this report. The prominent peaks on Metrobus seen beginning October 2022 are due from a changeover from farebox counts to ridership obtained from new automatic passenger counter (APC) technology.