



TRANSPORTATION AND PUBLIC WORKS

RIDERSHIP TECHNICAL REPORT

Division of Performance Analysis



January 2024

Table of Contents

<i>Table of Contents</i>	2-3
All Modes Overview	4
Total Monthly Weekday, Saturday and Sunday Monthly Boardings By Mode	5
Average Weekday, Saturday and Sunday Boardings by Mode	6
Metrobus Total Monthly Ridership Comparisons by Fiscal Year	7
Metrorail Total Monthly Ridership Comparisons by Fiscal Year	8
Metromover Total Monthly Ridership Comparisons by Fiscal Year	9
STS Total Monthly Ridership Comparisons by Fiscal Year	10
All-Modes Combined Total Monthly Ridership Comparisons By Fiscal Year	11
All Modes Combined Total Monthly and Average Weekday Ridership – Year over Year Comparison Charts	12
Average Weekday Ridership – Modal Splits	13
Daily Ridership for All Modes Combined since 2/1/20	14
 Metrobus	 15
Better Bus Network (BBN, 11/13/2023 Lineup) Bus Route Changes, Pt 1 and Pt 2	16-17
Metrobus Average Weekday Boardings by Route	18-20
Metrobus Average Saturday Boardings by Route	21-22
Metrobus Average Sunday Boardings by Route	23-24
Metrobus Monthly Total Boardings by Route	25-27
Year-over-Year Bus Ridership by Route Service Type	28-29
Bus Routes as Ranked by Percentage of Average Weekday Ridership	30
Metrobus Cumulative Percentage Average Weekday Ridership Share by Route (Top 75%)	31
Total Monthly and Average Weekday Bus Ridership – Year over Year Comparison Charts	32
Bus “Top 10 / Bottom 10” Bus Routes Sets Average Weekday Ridership Performance – Year-over-Year Comparisons	33
Bus “Top 10 / Bottom 10” Bus Routes Sets Average Weekday Ridership Performance – Month-over-3 Month Comparisons	34
Daily Metrobus Ridership since 2/1/20	35
Metrobus Parking Patronage Summary	36

Table of Contents (continued)

Metrorail	37
Metrorail Average Weekday Boardings by Station	38
Metrorail Average Saturday Boardings by Station	39
Metrorail Average Sunday Boardings by Station	40
Metrorail Total Monthly Boardings by Station	41
Metrorail Cumulative Percentage Average Weekday Ridership Share	42
Total Monthly and Average Weekday Rail Ridership – Year over Year Comparison Charts	43
“Top 5 / Bottom 5” Stations Average Weekday Ridership Performance	44
Daily Metrorail Ridership since 2/1/20	45
Metrorail Parking Patronage Summary	46
 Metromover	 47
Monthly and Average Daily Mover Boardings by Station	48
Metromover Cumulative Percentage Average Weekday Ridership Share	49
Total Monthly and Average Weekday Mover Ridership – Year over Year Comparison Charts	50
“Top 5 / Bottom 5” Stations Average Weekday Ridership Performance	51
Daily Metromover Ridership since 2/1/20	52
 Special Transportation Services (STS)	 53
STS Monthly and Average Daily Boardings	54
Total Monthly and Average Weekday STS Ridership – Year over Year Comparison Charts	55
Daily STS Ridership since 2/1/20	56
 Ridership Seasonality	 57
Ridership Seasonality – Percent Ridership Share by Month and Calendar Year for Each Mode	58

All Modes Overview



TOTAL MONTHLY WEEKDAY, SATURDAY AND SUNDAY BOARDINGS BY MODE
January 2024

TRAVEL MODE	MONTH'S TOTAL WEEKDAYS RIDERSHIP	MONTH'S TOTAL SATURDAYS RIDERSHIP	MONTH'S TOTAL SUNDAYS RIDERSHIP	TOTAL MONTHLY RIDERSHIP	% CHANGE vs Jan 2023 TOTAL MONTH RIDERSHIP
METROBUS (1)	4,186,740	499,350	417,167	5,103,257	6.6%
METRORAIL (2)	1,073,406	83,571	76,373	1,233,350	9.4%
METROMOVER	508,774	42,658	93,207	644,639	29.3%
STS PARATRANSIT (3)	108,427	8,731	8,355	125,513	11.4%
TOTAL	5,877,347	634,310	595,102	7,106,759	8.9%

- (1) Bus ridership reporting through automatic passenger counters coupled with a new enhanced sensor system resumed on October 1, 2022.
- (2) Metrorail fares resumed on June 1, 2021, following a 14-month period of fare-free rides as a result of the SARS-CoV-2 pandemic. The NextFare System faregate data replaced the video data as ridership data of record starting on that date, until free fares were reinstated for the Better Bus Network launch on 11/13/23. The NextFare System faregate data collection and reporting resumed on New Year's Day 2024.
- (3) Paratransit ridership data as reported by the contractor and subsequently audited by the Department.

AVERAGE WEEKDAY, SATURDAY AND SUNDAY BOARDINGS BY MODE
January 2024

Travel Mode	Average Weekday	Average Saturday	Average Sunday	% Change Jan 2023 Weekday	% Change Jan 2023 Saturday	% Change Jan 2023 Sunday
METROBUS	190,370	124,838	83,433	6.0%	13.6%	5.0%
METRORAIL	49,724	21,187	16,952	8.6%	4.1%	5.6%
METROMOVER	23,527	15,959	19,085	31.0%	6.8%	24.4%
STS PARATRANSIT	4,929	2,183	1,671	11.3%	12.0%	12.0%
Totals (1)	268,551	164,167	121,142	8.4%	11.6%	7.8%

(*) Average ridership is calculated and published only for those days and stations or routes with nontrivial amounts of reported data.

METROBUS TOTAL MONTHLY RIDERSHIP COMPARISONS BY FISCAL YEAR

Bus Month	FY 19	FY 20	Variance 19 to 20	FY 21	FY 22	FY 23	FY 24	Variance 19 to 23	Variance 22 to 23	Variance 19 to 24	Variance 23 to 24
Oct	4,554,886	4,507,012	-1.1%	2,805,139	3,081,157	4,679,725	4,912,151	2.7%	51.9%	7.8%	5.0%
Nov	4,245,535	4,197,225	-1.1%	2,651,290	3,056,726	4,549,666	5,135,172	7.2%	48.8%	21.0%	12.9%
Dec	4,081,581	4,126,990	1.1%	3,022,530	3,123,883	4,677,460	5,857,057	14.6%	49.7%	43.5%	25.2%
Jan	4,195,911	4,316,998	2.9%	3,082,746	3,029,055	4,785,128	5,103,257	14.0%	58.0%	21.6%	6.6%
Feb	3,994,019	4,123,083	3.2%	3,076,966	2,995,789	4,526,317		13.3%	51.1%		
Mar	4,266,768	3,136,162	-26.5%	3,660,639	3,218,562	5,183,872		21.5%	61.1%		
Apr	4,291,135	1,544,316	-64.0%	3,625,048	3,105,797	4,618,302		7.6%	48.7%		
May	4,330,922	1,734,609	-59.9%	3,683,343	3,097,574	4,953,197		14.4%	59.9%		
Jun	3,823,863	2,210,725	-42.2%	2,672,570	3,064,059	4,545,050		18.9%	48.3%		
Jul	4,094,906	2,366,749	-42.2%	2,769,907	3,189,994	4,484,458		9.5%	40.6%		
Aug	4,109,613	2,422,014	-41.1%	2,843,552	3,442,006	4,756,063		15.7%	38.2%		
Sep	3,971,220	2,546,923	-35.9%	2,877,110	3,123,572	4,525,426		14.0%	44.9%		
FY Total	49,960,359	37,232,806	-25.5%	36,770,840	37,528,174	56,284,664		12.7%	50.0%		

METRORAIL TOTAL MONTHLY RIDERSHIP COMPARISONS BY FISCAL YEAR

Rail Month	FY 19	FY 20	Variance 19 to 20	FY 21	FY 22	FY 23	FY 24	Variance 19 to 23	Variance 22 to 23	Variance 19 to 24	Variance 23 to 24
Oct	1,757,225	1,643,166	-6.5%	769,525	844,383	1,053,191	1,237,096	-40.1%	24.7%	-29.6%	17.5%
Nov	1,656,929	1,469,448	-11.3%	699,492	850,881	1,055,066	935,121	-36.3%	24.0%	-43.6%	-11.4%
Dec	1,553,804	1,433,928	-7.7%	769,194	860,436	1,063,096	1,177,272	-31.6%	23.6%	-24.2%	10.7%
Jan	1,708,695	1,576,340	-7.7%	799,119	832,924	1,127,340	1,233,350	-34.0%	35.3%	-27.8%	9.4%
Feb	1,501,458	1,549,118	3.2%	730,792	905,162	1,072,791		-28.6%	18.5%		
Mar	1,554,851	1,027,319	-33.9%	917,097	1,084,978	1,239,336		-20.3%	14.2%		
Apr	1,559,446	287,803	-81.5%	827,414	1,027,139	1,087,816		-30.2%	5.9%		
May	1,531,597	337,696	-78.0%	887,111	1,023,322	1,151,819		-24.8%	12.6%		
Jun	1,359,966	608,758	-55.2%	723,469	975,477	1,066,861		-21.6%	9.4%		
Jul	1,419,158	632,964	-55.4%	722,159	953,331	1,022,937		-27.9%	7.3%		
Aug	1,463,646	641,275	-56.2%	749,578	1,076,490	1,174,138		-19.8%	9.1%		
Sep	1,427,726	654,244	-54.2%	795,749	1,012,331	1,146,864		-19.7%	13.3%		
FY Total	18,494,501	11,862,059	-35.9%	9,390,699	11,446,854	13,261,255		-28.3%	15.9%		

METROMOVER TOTAL MONTHLY RIDERSHIP COMPARISONS BY FISCAL YEAR

Mover Month	FY 19	FY 20	Variance 19 to 20	FY 21	FY 22	FY 23	FY 24	Variance 19 to 23	Variance 22 to 23	Variance 19 to 24	Variance 23 to 24
Oct	790,533	831,234	5.1%	250,044	389,065	514,308	614,479	-34.9%	32.2%	-22.3%	19.5%
Nov	735,198	799,632	8.8%	232,422	418,929	439,150	584,887	-40.3%	4.8%	-20.4%	33.2%
Dec	767,239	849,832	10.8%	251,019	450,320	426,073	616,455	-44.5%	-5.4%	-19.7%	44.7%
Jan	746,728	847,773	13.5%	255,968	451,566	498,566	644,639	-33.2%	10.4%	-13.7%	29.3%
Feb	675,160	855,398	26.7%	260,332	465,968	459,264		-32.0%	-1.4%		
Mar	737,814	441,200	-40.2%	302,502	535,857	558,396		-24.3%	4.2%		
Apr	795,696	130,549	-83.6%	310,772	495,982	565,943		-28.9%	14.1%		
May	734,645	146,454	-80.1%	292,922	455,120	547,948		-25.4%	20.4%		
Jun	701,318	203,637	-71.0%	286,145	477,286	632,423		-9.8%	32.5%		
Jul	739,814	210,596	-71.5%	368,847	512,094	635,954		-14.0%	24.2%		
Aug	739,785	205,995	-72.2%	344,319	508,359	657,267		-11.2%	29.3%		
Sep	699,879	219,696	-68.6%	331,915	305,185	610,810		-12.7%	100.1%		
FY Total	8,863,809	5,741,996	-35.2%	3,487,207	5,465,731	6,546,102		-26.1%	19.8%		

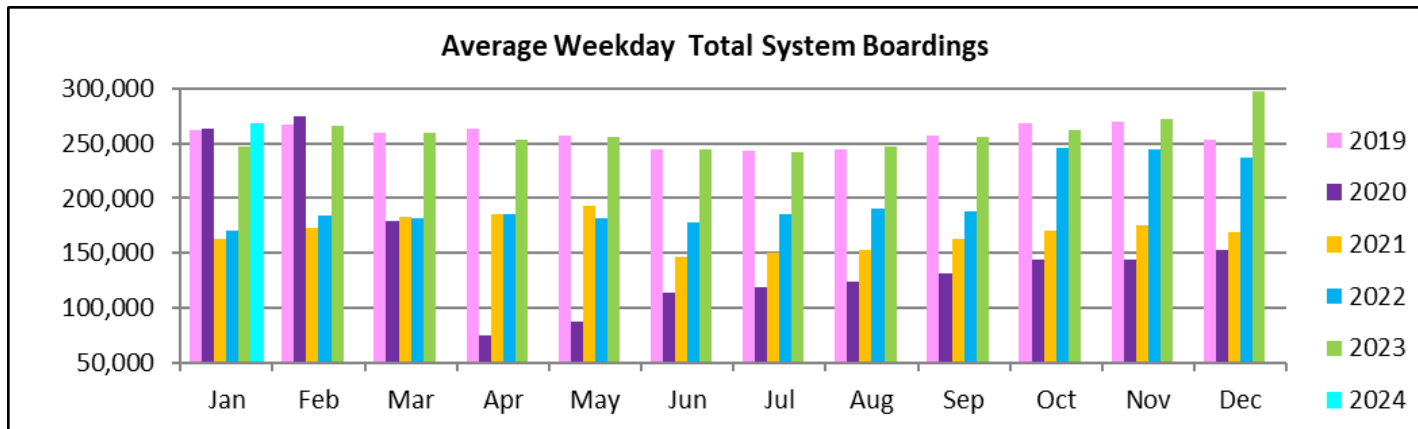
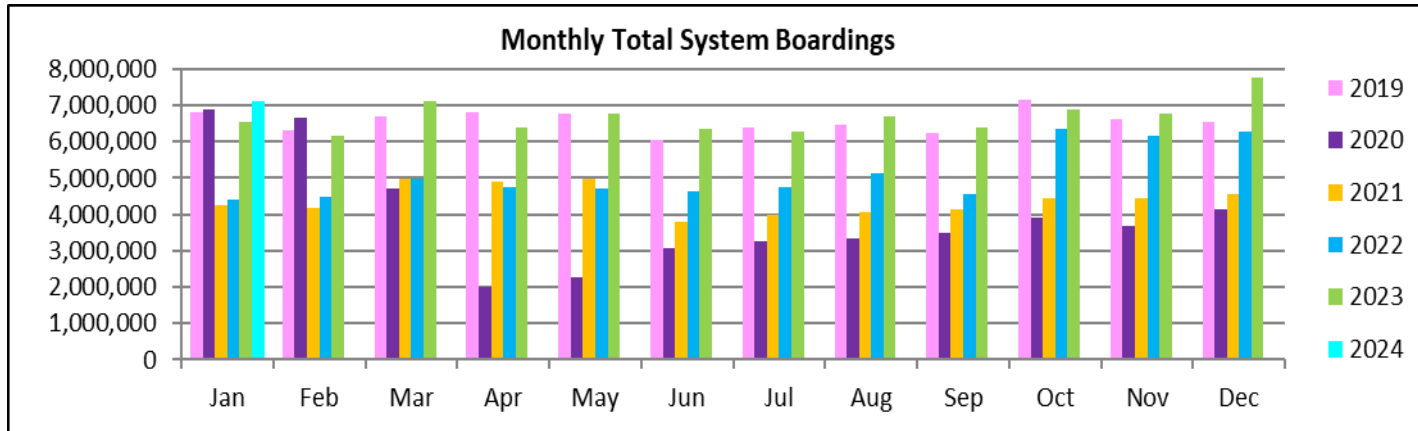
SPECIAL TRANSPORTATION SERVICES (STS) TOTAL MONTHLY RIDERSHIP COMPARISONS BY FISCAL YEAR

STS Month	FY 19	FY 20	Variance 19 to 20	FY 21	FY 22	FY 23	FY 24	Variance 19 to 23	Variance 22 to 23	Variance 19 to 24	Variance 23 to 24
Oct	162,564	162,704	0.1%	97,388	115,122	122,189	130,958	-24.8%	6.1%	-19.4%	7.2%
Nov	145,653	144,366	-0.9%	89,387	110,289	111,578	127,025	-23.4%	1.2%	-12.8%	13.8%
Dec	136,110	138,642	1.9%	96,366	104,496	112,019	130,093	-17.7%	7.2%	-4.4%	16.1%
Jan	146,268	149,114	1.9%	97,928	97,541	112,632	125,513	-23.0%	15.5%	-14.2%	11.4%
Feb	141,396	144,392	2.1%	98,285	105,706	111,748		-21.0%	5.7%		
Mar	153,191	89,634	-41.5%	112,930	120,718	126,819		-17.2%	5.1%		
Apr	155,808	26,877	-82.7%	120,122	114,912	116,882		-25.0%	1.7%		
May	158,665	39,654	-75.0%	118,636	114,505	127,782		-19.5%	11.6%		
Jun	141,320	59,093	-58.2%	112,397	109,054	119,527		-15.4%	9.6%		
Jul	148,232	61,765	-58.3%	110,059	107,188	113,623		-23.3%	6.0%		
Aug	147,331	66,563	-54.8%	110,766	117,941	125,510		-14.8%	6.4%		
Sep	141,387	80,346	-43.2%	115,406	108,788	122,065		-13.7%	12.2%		
FY Total	1,777,925	1,163,150	-34.6%	1,279,670	1,326,260	1,422,374		-20.0%	7.2%		

ALL-MODES COMBINED TOTAL MONTHLY RIDERSHIP COMPARISONS BY FISCAL YEAR

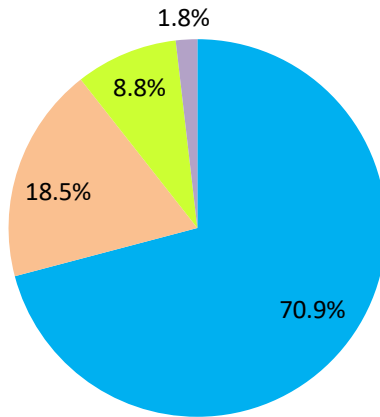
All Modes Month	FY 19	FY 20	FY 21	FY 22	FY 23	FY 24	19 TO 20	20 TO 21	21 TO 22	22 TO 23	19 TO 23	23 TO 24	19 TO 24
Oct	7,265,208	7,144,116	3,922,096	4,429,727	6,369,413	6,894,684	-1.7%	-45.1%	12.9%	43.8%	-12.3%	8.2%	-5.1%
Nov	6,783,315	6,610,671	3,672,591	4,436,825	6,155,460	6,782,205	-2.5%	-44.4%	20.8%	38.7%	-9.3%	10.2%	0.0%
Dec	6,538,734	6,549,392	4,139,109	4,539,135	6,278,648	7,780,877	0.2%	-36.8%	9.7%	38.3%	-4.0%	23.9%	19.0%
Jan	6,797,602	6,890,225	4,235,761	4,411,086	6,523,666	7,106,759	1.4%	-38.5%	4.1%	47.9%	-4.0%	8.9%	4.5%
Feb	6,312,033	6,671,991	4,166,375	4,472,625	6,170,120		5.7%	-37.6%	7.4%	38.0%	-2.2%		
Mar	6,712,624	4,694,315	4,993,168	4,960,115	7,108,423		-30.1%	6.4%	-0.7%	43.3%	5.9%		
Apr	6,802,085	1,989,545	4,883,356	4,743,830	6,388,943		-70.8%	145.5%	-2.9%	34.7%	-6.1%		
May	6,755,829	2,258,413	4,982,012	4,690,521	6,780,746		-66.6%	120.6%	-5.9%	44.6%	0.4%		
Jun	6,026,467	3,082,213	3,794,581	4,625,876	6,363,861		-48.9%	23.1%	21.9%	37.6%	5.6%		
Jul	6,402,110	3,272,074	3,970,972	4,762,607	6,256,972		-48.9%	21.4%	19.9%	31.4%	-2.3%		
Aug	6,460,375	3,335,847	4,048,215	5,144,796	6,712,978		-48.4%	21.4%	27.1%	30.5%	3.9%		
Sep	6,240,212	3,501,209	4,120,180	4,549,876	6,405,165		-43.9%	17.7%	10.4%	40.8%	2.6%		
FY Total	79,096,594	56,000,011	50,928,416	55,767,019	77,514,395		-29.2%	-9.1%	9.5%	39.0%	-2.0%		

TOTAL MONTHLY AND AVERAGE WEEKDAY RIDERSHIP YEAR OVER YEAR COMPARISON CHARTS – ALL MODES COMBINED



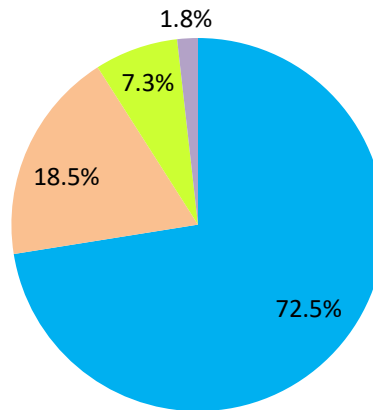
AVERAGE WEEKDAY RIDERSHIP - MODAL SPLITS

January 2024



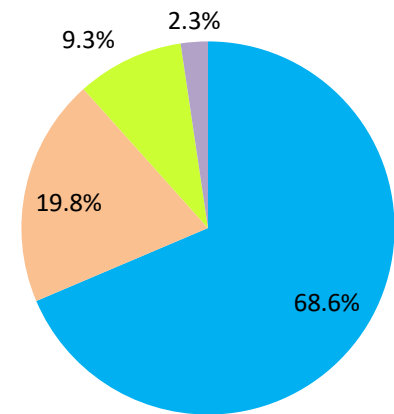
boardings

January 2023



boardings

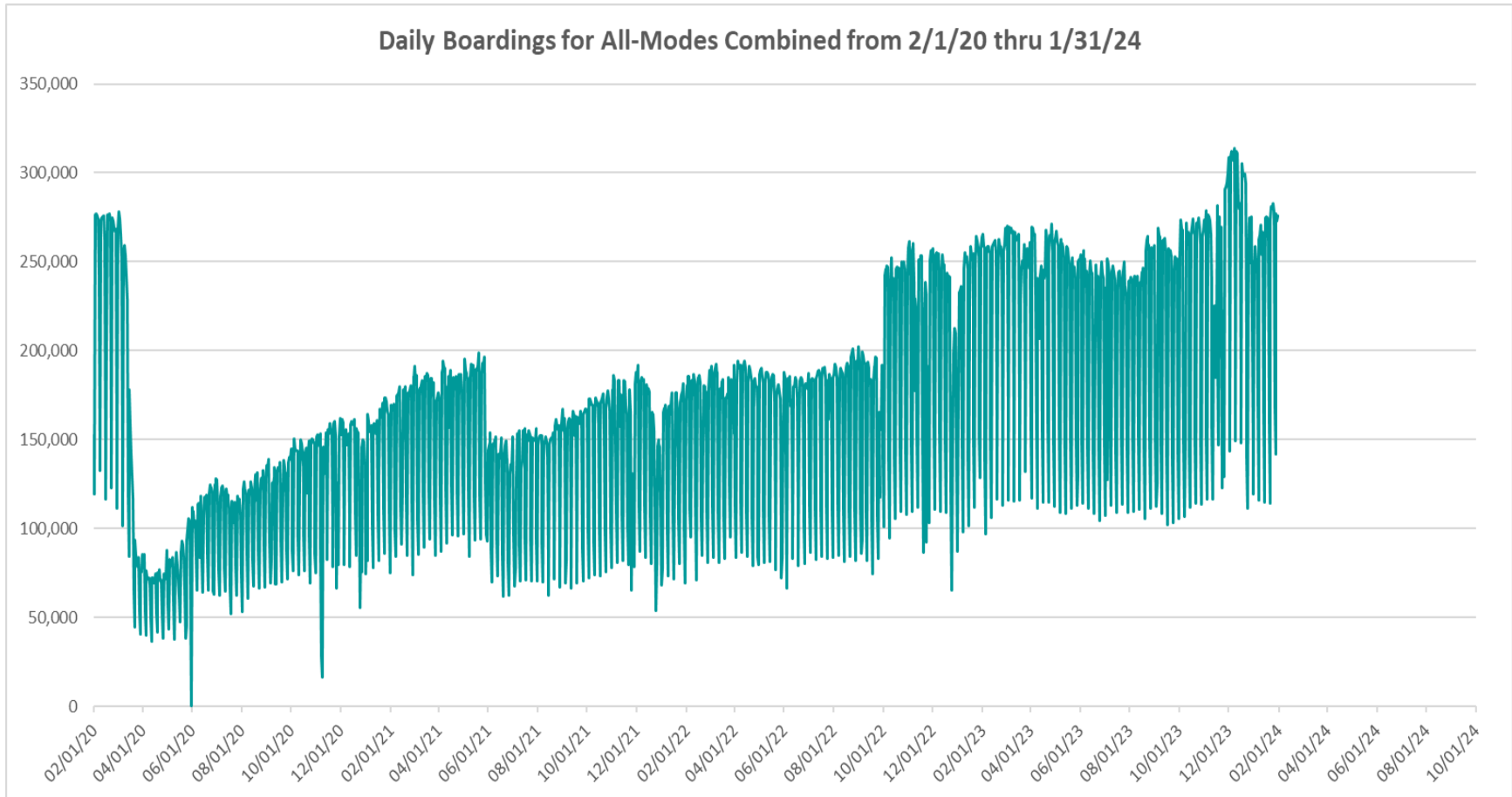
January 2022



boardings



DAILY RIDERSHIP FOR ALL MODES COMBINED SINCE FEBRUARY 1, 2020



- (1) There was no Metrobus, Metrorail and Metromover service on 5/31/20, as a safety precaution, and no service for any of the four modes on 9/28/22 as a result of Hurricane Ian..
- (2) The dip at the start of the second week of December 2020 is due to Hurricane Eta.
- (3) Daily variations from October 2022 onward are, for the Bus portion, estimated from reports made available by the Bus APC data vendor..
- (4) The reduction seen beginning 6/1/21 is partly due to the resumption of fares for bus and rail, and partly the result of having resumed reporting Cubic farebox data rather than bus APC counts, as well as Cubic rail faregate counts instead of video camera counts on that date. The jump seen at the start of December 2022 is due to the return to APC bus ridership counts reporting begun on 10/1/22.
- (5) The marked peak in Dec 2023 is attributable to the Better Bus Network launch period and attendant free fares.
- (6) Periodic (weekly) variations are prominent, since weekday ridership is almost always significantly higher than weekend or holiday ridership.

Metrobus



Better Bus Network (BBN, 11/13/2023 lineup) Bus Route Changes (Pt 1)

The listings below and on the following page are to serve as an aid in identifying individual routes for comparison of ridership data between periods prior to and following the launch of the BBN on 11/13/2023. In November 2023, both old and new route numbers appear in data tables, since the launch took place near mid-month; beginning with January 2024, only the current (BBN) numbering system appear in tables, to allow for direct comparisons.

BBN Numbering Changes:

Contracted **Route 1** was renumbered **Route 97**

Directly operated **Route 33** was renumbered **Route 103** (new, recycled number, not the same as former **Route 103** - C)

Directly operated **Route 51** (Flagler MAX) was renumbered **Route 211** (recycled number, not the same as the OVERTOWN CIRCULATOR)

Contracted **Route 71** was renumbered **Route 107** (new, recycled number, not the same as **Route 107** - G further below) and became directly operated

Directly operated **Route 79** was renumbered **Route 279** (79th Steet MAX)

Directly operated **Route 93** was renumbered **Route 203** (Biscayne MAX)

Directly operated **Route 99** was renumbered **Route 199**

Contracted **Route 101** - A was renumbered **Route 15**

Directly operated **Route 102** - B was renumbered **Route 26** (under the BBN's first phase, 07/24/2023 lineup)

Directly operated **Route 107** - G (old, not the same as the **Route 107** appearing above) was renumbered **Route 125**

Directly operated **Route 112** - L was renumbered **Route 79** (recycled number, not the same as the **Route 79** appearing above)

Directly operated **Route 120** was renumbered **Route 100**

Directly operated **Route 200** (CUTLER BAY LOCAL) was renumbered **Route 500** (recycled number, not the same as the Route 500 further below)

Contracted **Route 210** was renumbered **Route 510** (SKYLAKE CIRCULATOR)

Contracted **Route 246** was renumbered **Route 401** (NORTH OWL)

Contracted **Route 248** (Princeton Circulator) was renumbered **Route 70** (recycled number, not the same as former **Route 70**)

Directly operated **Route 252** became contractor-operated, under the new name and number **Route 152**

Directly operated **Route 500** was renumbered **Route 400** (SOUTH OWL)

The above routes, along with many others who retained their numbering, underwent modifications in various ways (realignment, new headways, days of operation, etc., some major), as part of the BBN design and its resulting lineup. Details for each DTPW Bus route are provided in the Miami-Dade County website. (Directly operated Route 2 became contractor-operated but kept its number).

Better Bus Network (BBN, 11/13/2023 lineup) Bus Route Changes (Pt 2)

BBN New Routes and Numbers:

Two new routes with new numbering were created to support the Better Bus Network:

Route 14 corresponds to a newly created route

Route 20 corresponds to a newly created route

BBN Eliminated Routes:

The following routes were discontinued, as part of the Better Bus Network realignments:

Route 10	Route 105 - E	Route 212 (SWEETWATER CIRCULATOR)
Route 16	Route 108 - H	Route 217 (BUNCHE PARK CIRCULATOR)
Route 19	Route 110 - J	Route 238 (EAST-WEST CONNECTION)
Route 29	Route 113 - M	Route 241 (TUTTLE LIMITED)
Route 31 (BUSWAY LOCAL)	Route 115	Route 254 (BROWNSVILLE CIRCULATOR)
Route 42	Route 119 - S	Route 267 (LUDLAM LIMITED)
Route 46 (LIBERTY CITY CONNECTION)	Route 155 (BISCAYNE GARDENS CIRCULATOR)	Route 277 (7th AVENUE MAX)
Route 57	Route 202 (LITTLE HAITI CONNECTION)	Route 286 (NORTH POINTE CIRCULATOR)
Route 82 (WESTCHESTER CIRCULATOR)		Route 297 (27th AVENUE ORANGE MAX)
Route 103 - C (old, previously used numbering, not the same as the Route 103 in the list on the previous page)		
Route 211 (OVERTOWN CIRCULATOR, previously used numbering, not the same as the Route 211 in the list on the previous page)		

Previously Eliminated Routes:

The following five express routes were suspended soon after the start of the SARS-CoV-2 pandemic, and never reinstated; their ridership appears in some of the tables in this report, as then-components of the reported bus system performance measures:

Route 175 (NW MIAMI-DADE EXPRESS)
Route 195 EXPRESS – BROWARD BLVD
Route 196 EXPRESS – BROWARD BLVD-CIVIC CENTER
Route 295 EXPRESS – SHERIDAN STREET
Route 296 EXPRESS – SHERIDAN STREET-CIVIC CENTER

The preceding listings are not exhaustive, and the reader is referred to the Miami-Dade County website for further BBN details or additional changes.

METROBUS AVERAGE WEEKDAY BOARDINGS BY ROUTE (†, ††)

Route	Average Weekday	Average Weekday	Percent Change	Average Weekday	Percent Change	Average Weekday	Percent Change	Average Weekday	Percent Change
weekdays	Jan-24	Dec-23	MOM	Jan-23	YOY	Feb-20	Current vs Feb-20	Jan-20	YO4Y
2	1,707	2,243	-23.9%	2,617	-34.8%	3,102	-45.0%	2,328	-26.7%
3	8,307	9,503	-12.6%	5,090	63.2%	5,137	61.7%	4,952	67.7%
7	4,045	4,748	-14.8%	3,848	5.1%	3,501	15.5%	3,012	34.3%
8	4,767	5,849	-18.5%	4,679	1.9%	3,909	22.0%	3,617	31.8%
9	10,629	12,886	-17.5%	5,996	77.3%	5,528	92.3%	5,125	107.4%
10				2,266		2,482		2,154	
11	10,972	13,029	-15.8%	8,574	28.0%	7,292	50.5%	6,882	59.4%
12	2,846	3,448	-17.5%	2,930	-2.9%	2,779	2.4%	2,576	10.5%
14	941	1,361	-30.8%						
15	392	411	-4.7%	253	55.1%	177	121.4%	165	138.1%
16				1,945		1,862		1,774	
17	6,506	7,316	-11.1%	3,784	72.0%	3,878	67.8%	3,770	72.6%
19				1,515		1,542		1,422	
20	3,709	4,783	-22.5%						
21	1,938	2,587	-25.1%	1,781	8.8%	1,817	6.7%	1,801	7.6%
22	2,572	2,964	-13.2%	4,350	-40.9%	3,640	-29.3%	3,586	-28.3%
24-CORAL WAY LIMITED	2,521	3,027	-16.7%	2,297	9.8%	1,340	88.2%	1,719	46.7%
26	2,363	2,477	-4.6%	2,171	8.8%	1,778	32.9%	1,621	45.8%
27	9,220	10,198	-9.6%	6,921	33.2%	6,972	32.2%	6,563	40.5%
29				475		534		566	
31-BUSWAY LOCAL				1,098		1,089		1,047	
32	1,894	2,018	-6.2%	2,577	-26.5%	2,390	-20.7%	2,304	-17.8%
34 TRANSITWAY EXPRESS	1,745	1,694	3.0%	1,406	24.2%	2,008	-13.1%	1,845	-5.4%
35	2,219	2,627	-15.5%	2,669	-16.9%	2,421	-8.3%	2,413	-8.0%
36	6,117	7,259	-15.7%	2,643	131.4%	2,536	141.2%	2,442	150.5%
37	4,707	5,359	-12.2%	3,624	29.9%	3,273	43.8%	3,222	46.1%
38 TRANSITWAY MAX	7,102	8,271	-14.1%	5,607	26.7%	6,361	11.7%	6,468	9.8%
39 TRANSITWAY EXPRESS	810	793	2.2%			893	-9.2%	883	-8.2%
40	1,929	2,027	-4.9%	2,199	-12.3%	1,772	8.9%	1,671	15.4%
42				1,101		820		817	
46 - LIBERTY CITY CONN.				21		41		34	
52	1,650	1,836	-10.2%	1,336	23.5%	1,261	30.8%	1,236	33.4%
54	2,882	3,337	-13.6%	3,095	-6.9%	2,940	-2.0%	2,856	0.9%
56	572	613	-6.7%	350	63.2%	354	61.6%	349	63.9%
57				495		433		384	
62	2,578	3,304	-22.0%	1,737	48.4%	1,815	42.0%	1,749	47.4%
70	289	316	-8.5%	136	112.5%	135	115.0%	128	126.0%

(†) In this table and those which follow, “YOY” stands for “year-over-year”, “MOM” for “month-over-month” and “YO4Y” for “year over four years”, i.e., current month vs 12 months prior, one month prior, and 48 months prior, respectively. The February 2020 numbers serve as a pre-pandemic benchmark.

METROBUS AVERAGE WEEKDAY BOARDINGS BY ROUTE

Route	Average Weekday	Average Weekday	Percent Change	Average Weekday	Percent Change	Average Weekday	Percent Change	Average Weekday	Percent Change
weekdays	Jan-24	Dec-23	MOM	Jan-23	YOY	Feb-20	Current vs Feb-20	Jan-20	YO4Y
72	930	980	-5.1%	660	41.0%	781	19.1%	733	27.0%
73	1,518	1,666	-8.9%	3,119	-51.3%	2,124	-28.5%	2,011	-24.5%
75	2,922	3,256	-10.3%	1,302	124.4%	1,429	104.5%	1,481	97.3%
77	11,487	12,463	-7.8%	8,704	32.0%	7,129	61.1%	7,154	60.6%
79	8,454	10,218	-17.3%	8,875	-4.7%	7,636	10.7%	7,460	13.3%
82 - WESTCHESTER CIRC				61		62		55	
87	2,331	2,611	-10.7%	1,930	20.8%	1,499	55.5%	1,472	58.3%
88	1,991	2,243	-11.2%	2,455	-18.9%	2,076	-4.1%	2,014	-1.1%
95-EXPRESS GOLDEN GLADES	1,257	1,277	-1.5%	932	35.0%	1,690	-25.6%	1,742	-27.8%
97	173	208	-17.1%	219	-21.0%	184	-6.1%	183	-5.6%
100	16,041	20,577	-22.0%	7,196	122.9%	6,667	140.6%	6,664	140.7%
103 - C						463		435	
103	2,182	2,451	-11.0%	1,855	17.6%	1,687	29.3%	1,634	33.5%
104	1,188	1,155	2.8%	922	28.9%	837	41.9%	863	37.7%
105 - E				1,445		1,287		1,259	
107	2,227	2,308	-3.5%	741	200.5%	711	213.5%	656	239.4%
108 - H				599		473		499	
110 - J				3,181		2,508		2,563	
113 - M				670		866		818	
115				163		180		167	
119 - S				10,578		8,970		8,738	
125	4,370	4,637	-5.8%	1,924	127.2%	1,713	155.1%	1,656	163.9%
132 -TRI-RAIL DORAL SHUTTLE	51	51	0.1%	42	21.9%	16	225.5%	1	4368.0%
135	1,938	2,098	-7.6%	1,438	34.8%	1,399	38.6%	1,331	45.6%
136	159	175	-9.2%	155	2.5%	126	25.9%	135	17.5%
137-WEST DADE CONNECTION	2,506	2,746	-8.7%	2,191	14.3%	1,626	54.1%	1,537	63.0%
150-MIAMI BEACH AIRPORT EXPRESS	1,535	1,969	-22.1%	2,286	-32.8%	1,867	-17.8%	1,732	-11.4%
152	398	430	-7.5%	1,010	-60.6%	851	-53.2%	830	-52.1%
155 - BISCAYNE GARDENS CIRC				45		44		42	
175 - NW MIAMI-DADE EXPRESS						33		28	
183	4,994	5,480	-8.9%	3,335	49.7%	3,149	58.6%	3,122	60.0%
195 EXPRESS - BROWARD BLVD						372		388	
196 EXPRESS - SHERIDAN ST						383		360	
199	1,968	2,223	-11.5%	1,605	22.6%	1,473	33.6%	1,422	38.4%
202 - LITTLE HAITI CONN				75		140		132	
203 - BISCAYNE MAX	1,371	1,583	-13.4%	3,580	-61.7%	3,334	-58.9%	3,220	-57.4%

METROBUS AVERAGE WEEKDAY BOARDINGS BY ROUTE

Route	Average Weekday	Average Weekday	Percent Change	Average Weekday	Percent Change	Average Weekday	Percent Change	Average Weekday	Percent Change
weekdays	Jan-24	Dec-23	MOM	Jan-23	YOY	Feb-20	Current vs Feb-20	Jan-20	YO4Y
204 KILLIAN MAX	616	621	-0.7%	651	-5.4%	1,071	-42.4%	942	-34.5%
207 (7th St)-LITTLE HAVANA CONN	1,783	2,175	-18.0%	1,678	6.2%	1,489	19.7%	1,550	15.0%
208 (8th St)-LITTLE HAVANA CONN	1,668	2,152	-22.5%	1,557	7.2%	1,308	27.6%	1,402	19.0%
211 OVERTOWN CIRCULATOR				90		58		59	
211 - FLAGLER MAX	1,791	2,009	-10.8%	3,923	-54.4%	3,109	-42.4%	3,050	-41.3%
212-SWEETWATER CIRC				23		15		13	
217 - BUNCHE PARK CIRC				56		97		88	
238-EAST/WEST CONN				620		449		455	
241 TUTTLE LIMITED				231					
254-BROWNSVILLE CIRC				8		19		17	
267-LUDLAM LIMITED				166		149		136	
272 SUNSET MAX (*)	372	369	0.8%	367	1.4%	550	-32.4%	508	-26.8%
277-7TH AVENUE MAX				691		683		640	
279 - 79 STREET MAX	718	824	-12.9%	534	34.5%	361	98.6%	355	102.3%
286-NORTH POINTE CIRC				79		97		102	
287-SAGA BAY MAX	387	404	-4.2%	300	29.1%	358	8.1%	345	12.0%
288 KENDALL MAX	483	526	-8.3%	457	5.6%	762	-36.7%	753	-35.9%
295						233		209	
296						215		222	
297-27th AVENUE ORANGE MAX				1,214		1,356		1,346	
301-DADE MONROE EXPRESS	1,018	1,199	-15.1%	821	24.0%	841	21.0%	856	18.9%
302-CARD SOUND EXPRESS	106	108	-1.4%	109	-2.5%	86	23.0%	86	23.1%
338 - WEEKEND EXPRESS									
344	124	137	-9.7%	71	75.3%	96	29.0%	96	29.2%
400 - SOUTH OWL	87	94	-8.2%	77	13.0%	81	7.0%	39	124.9%
401 - NORTH OWL	48	60	-20.6%	59	-20.0%	94	-49.1%	98	-51.2%
500 - CUTLER BAY LOCAL	249	256	-2.5%	124	101.4%	158	58.0%	157	59.1%
510 - SKYLAKE CIRCULATOR (*)	400	392	2.1%	342	16.9%	282	41.9%	275	45.3%
836 EXPRESS	324	297	8.8%	226	43.2%				
837 EXPRESS	201	175	15.2%	99	102.7%				
AHEPA SHUTTLE	19	18	7.0%	16	18.8%	21	-8.4%	20	-5.9%
FEDERATION GARDENS SHUTTLE									
GREEN HILLS SHUTTLE	8	10	-18.4%	4	93.8%	9	-13.9%	5	47.6%
KINGS CREEK SHUTTLE	10	8	18.2%	17	-41.8%	13	-25.0%	30	-67.3%
ROBERT SHARP SHUTTLE	20	13	55.4%	18	15.4%	10	112.6%	5	284.8%
SIERRA LAKES SHUTTLE	23	19	19.7%	15	51.7%	45	-49.4%	19	18.5%
Total	190,370	220,953	-13.8%	179,518	6.0%	167,711	13.5%	161,892	17.6%

(*) To see which routes fully or partly operated under contract this month, please refer to the ranking table in Slide 30.

(1) Includes shuttles and those routes which were not run both years.

(2) Several express routes were suspended beginning at the end of March 2020, due to the SARS-CoV-2 pandemic, while other routes had alignment and schedule modifications made to them, in an ongoing effort to optimize service delivery.

January 2024

20

METROBUS AVERAGE SATURDAY BOARDINGS BY ROUTE

Route	Average Saturday	Average Saturday	Percent Change	Average Saturday	Percent Change	Average Saturday	Percent Change	Average Saturday	Percent Change
Saturdays	Jan-24	Dec-23	MOM	Jan-23	YOY	Feb-20	Current vs Feb-20	Jan-20	YO4Y
2	870	1,131	-23.1%	1,522	-42.8%	1,616	-46.2%	1,473	-40.9%
3	6,764	8,596	-21.3%	6,001	12.7%	5,229	29.3%	5,440	24.3%
7	2,360	2,887	-18.3%	1,965	20.1%	1,887	25.0%	1,822	29.6%
8	2,612	3,340	-21.8%	2,465	6.0%	2,027	28.8%	2,000	30.6%
9	6,954	8,641	-19.5%	3,371	106.3%	3,034	129.2%	3,192	117.9%
10				1,935		1,896		1,855	
11	8,168	10,841	-24.7%	6,694	22.0%	5,182	57.6%	5,301	54.1%
14	848	1,078	-21.3%						
15	398	404	-1.7%	106	274.1%	71	461.4%	76	423.0%
16				1,765		1,566		1,578	
17	4,424	5,228	-15.4%	2,496	77.3%	2,363	87.2%	2,551	73.4%
20	2,886	3,928	-26.5%						
22	1,645	1,984	-17.1%	2,445	-32.7%	2,084	-21.1%	2,234	-26.4%
24-CORAL WAY LIMITED	1,733	2,382	-27.2%	1,575	10.0%	1,165	48.7%	1,288	34.5%
26	1,257	1,364	-7.9%	1,220	3.1%	851	47.7%	857	46.7%
27	5,872	7,276	-19.3%	4,230	38.8%	4,034	45.6%	4,379	34.1%
31-BUSWAY LOCAL				924		896		814	
32	1,090	1,296	-15.9%	1,083	0.7%	1,029	5.9%	1,115	-2.2%
35	1,666	2,113	-21.2%	1,530	8.9%	1,372	21.4%	1,143	45.8%
36	4,635	5,682	-18.4%	1,585	192.4%	1,289	259.4%	1,377	236.5%
37	2,947	3,560	-17.2%	2,148	37.2%	2,090	41.0%	2,235	31.8%
38 TRANSITWAY MAX	6,474	7,214	-10.2%	5,157	25.5%	4,715	37.3%	5,065	27.8%
40	1,092	1,173	-6.9%	924	18.2%	655	66.9%	665	64.3%
42				698		552		588	
52	1,087	1,333	-18.5%	748	45.2%	686	58.4%	669	62.5%
54	1,736	2,230	-22.2%	2,000	-13.2%	1,727	0.5%	1,883	-7.8%
56	201	223	-9.9%						
62	1,879	2,470	-23.9%	1,408	33.5%	1,343	39.9%	1,395	34.7%
70	186	205	-9.3%						
72	521	496	5.1%	363	43.8%	350	49.1%	400	30.3%
73	651	777	-16.1%	1,471	-55.7%	860	-24.3%	1,006	-35.2%
75	1,831	2,415	-24.2%	456	301.6%	468	291.3%	535	242.3%
77	7,175	8,841	-18.9%	5,639	27.2%	4,197	70.9%	4,357	64.7%
79	7,153	9,322	-23.3%	7,138	0.2%	5,667	26.2%	6,177	15.8%
82 - WESTCHESTER CIRC				46		50		60	

METROBUS AVERAGE SATURDAY BOARDINGS BY ROUTE

Route	Average Saturday	Average Saturday	Percent Change	Average Saturday	Percent Change	Average Saturday	Percent Change	Average Saturday	Percent Change
Saturdays	Jan-24	Dec-23	MOM	Jan-23	YOY	Feb-20	Current vs Feb-20	Jan-20	YO4Y
87	1,017	1,123	-9.4%	625	62.8%	402	152.8%	498	104.5%
88	1,534	1,811	-15.3%	1,797	-14.6%	1,620	-5.3%	1,740	-11.9%
97	175	190	-7.9%	178	-1.5%	215	-18.6%	244	-28.3%
100	13,473	19,445	-30.7%	6,362	111.8%	4,744	184.0%	5,192	159.5%
103 - C						315		287	
103	1,350	1,708	-21.0%	1,145	17.9%	951	42.0%	1,010	33.7%
104	816	896	-8.9%	486	68.0%	468	74.3%	541	51.0%
105 - E				747		619		725	
107	1,291	1,547	-16.5%	259	399.0%	252	412.8%	297	334.4%
108 - H				453		372		415	
110 - J				2,152		1,952		2,009	
113 - M				460		503		483	
115				90		82		106	
119 - S				8,807		6,861		7,512	
125	2,906	3,079	-5.6%	1,289	125.5%	1,066	172.5%	1,055	175.6%
135	896	1,064	-15.8%	496	80.8%	539	66.3%	509	76.1%
137-WEST DADE CONNECTION	1,616	1,791	-9.8%	1,504	7.5%	1,027	57.3%	1,110	45.6%
150-MIAMI BEACH AIRPORT EXPRESS	1,454	1,872	-22.4%	2,113	-31.2%	1,604	-9.4%	1,695	-14.2%
152	246	240	2.5%	394	-37.5%	302	-18.5%	328	-24.9%
183	3,174	3,674	-13.6%	1,971	61.0%	1,790	77.3%	1,915	65.7%
199	1,268	1,536	-17.5%	1,077	17.7%	849	49.4%	980	29.3%
202 - LITTLE HAITI CONN				26		50		53	
207 (7th St)-LITTLE HAVANA CONN	806	1,197	-32.7%	1,039	-22.4%	1,032	-21.9%	905	-10.9%
208 (8th St)-LITTLE HAVANA CONN	967	1,413	-31.6%	1,180	-18.1%	1,044	-7.4%	1,157	-16.5%
241 TUTTLE LIMITED				158					
286-NORTH POINTE CIRC				64		41		49	
301-DADE MONROE EXPRESS	968	1,116	-13.3%	770	25.7%	801	20.8%	879	10.1%
302-CARD SOUND EXPRESS	85	100	-15.5%	75	13.0%	57	49.3%	60	40.8%
338 - WEEKEND EXPRESS	175	323	-45.9%	259	-32.6%	237	-26.2%	237	-26.2%
344	73	88	-17.3%						
400 - SOUTH OWL	120	93	29.0%	90	32.8%	70	70.7%	43	179.5%
401 - NORTH OWL	48	77	-38.5%	34	40.7%	84	-43.7%	91	-47.5%
500 - CUTLER BAY LOCAL	242	236	2.7%	90	168.9%	119	103.0%	145	67.5%
510 - SKYLAKE CIRCULATOR (*)	223	169	32.4%	69	224.7%	165	35.3%	92	143.3%
12/21 WEEKEND INTERLINE	2,786	3,669	-24.1%	2,548	9.4%	2,528	10.2%	2,551	9.2%
FEDERATION GARDENS SHUTTLE	19	21	-7.8%	16	20.6%	28	-33.1%	29	-34.5%
Total	124,838	156,909	-20.4%	109,921	13.6%	93,742	33.2%	98,464	26.8%

METROBUS AVERAGE SUNDAY BOARDINGS BY ROUTE

Route	Average Sunday	Average Sunday	Percent Change	Average Sunday	Percent Change	Average Sunday	Percent Change	Average Sunday	Percent Change
Sundays	Jan-24	Dec-23	MOM	Jan-23	YOY	Feb-20	Current vs Feb-20	Jan-20	YO4Y
2	620	1,065	-41.8%	1,026	-39.6%	1,335	-53.5%	894	-30.6%
3	4,651	6,223	-25.3%	4,690	-0.8%	4,353	6.9%	4,462	4.2%
7	1,594	2,101	-24.1%	1,561	2.1%	1,654	-3.6%	1,294	23.2%
8	1,575	2,068	-23.8%	1,760	-10.5%	1,746	-9.8%	1,454	8.4%
9	4,227	5,544	-23.7%	2,603	62.4%	2,549	65.8%	2,373	78.1%
10				1,504		1,441		1,388	
11	5,231	7,127	-26.6%	4,207	24.3%	3,917	33.5%	3,693	41.7%
14	824	1,383	-40.4%						
15	319	293	8.8%	36	796.1%	56	474.8%	55	477.9%
16				978		997		966	
17	2,601	3,584	-27.4%	1,784	45.8%	1,833	41.9%	1,683	54.5%
20	2,030	2,999	-32.3%						
22	1,029	1,342	-23.3%	1,813	-43.2%	1,548	-33.6%	1,526	-32.6%
24-CORAL WAY LIMITED	1,080	1,381	-21.8%	1,102	-2.0%	905	19.4%	995	8.5%
26	844	957	-11.8%	866	-2.5%	717	17.8%	716	17.8%
27	3,550	4,455	-20.3%	2,861	24.1%	2,918	21.6%	2,855	24.3%
31-BUSWAY LOCAL				645		715		622	
32	822	980	-16.1%	714	15.2%	772	6.5%	718	14.5%
35	1,213	1,529	-20.6%	1,111	9.1%	942	28.8%	895	35.6%
36	3,224	4,020	-19.8%	1,127	186.2%	1,111	190.3%	1,036	211.1%
37	1,971	2,579	-23.6%	1,778	10.8%	1,739	13.3%	1,676	17.6%
38 TRANSITWAY MAX	4,317	5,409	-20.2%	3,951	9.2%	4,147	4.1%	3,923	10.0%
40	700	797	-12.1%	544	28.7%	447	56.5%	437	60.0%
42				411		416		358	
52	798	966	-17.4%	461	72.9%	466	71.1%	468	70.5%
54	1,131	1,354	-16.5%	1,150	-1.6%	1,171	-3.4%	1,188	-4.8%
62	1,129	1,569	-28.0%	830	36.1%	891	26.8%	912	23.8%
70	143	157	-9.2%						
72	364	389	-6.4%	328	11.1%	265	37.8%	271	34.4%
73	243	278	-12.7%	680	-64.3%	495	-50.9%	445	-45.5%
75	1,286	1,706	-24.6%	301	327.5%	271	375.0%	274	369.0%
77	4,525	5,711	-20.8%	3,529	28.2%	2,815	60.8%	2,715	66.6%
79	5,154	6,958	-25.9%	5,420	-4.9%	4,804	7.3%	4,700	9.7%

METROBUS AVERAGE SUNDAY BOARDINGS BY ROUTE

Route	Average Sunday	Average Sunday	Percent Change	Average Sunday	Percent Change	Average Sunday	Percent Change	Average Sunday	Percent Change
Sundays	Jan-24	Dec-23	MOM	Jan-23	YOY	Feb-20	Current vs Feb-20	Jan-20	YO4Y
87	456	523	-12.8%	357	27.6%	319	42.9%	293	55.8%
88	1,028	1,262	-18.6%	1,256	-18.2%	1,286	-20.1%	1,207	-14.9%
97	153	150	2.2%	146	4.8%	201	-23.8%	179	-14.7%
100	9,486	13,183	-28.0%	3,987	137.9%	3,469	173.4%	3,508	170.4%
103 - C						212		204	
103	784	1,063	-26.2%	620	26.4%	607	29.2%	555	41.2%
104	485	517	-6.2%	321	51.3%	317	53.0%	298	62.9%
105 - E				727		616		631	
107	984	1,243	-20.9%	156	531.5%	162	507.3%	138	611.9%
108 - H				398		328		326	
110 - J				1,856		1,638		1,548	
113 - M				488		431		430	
115				61		80		73	
119 - S				9,352		7,141		7,578	
125	1,774	2,162	-17.9%	979	81.2%	895	98.2%	906	95.9%
135	627	834	-24.9%	343	82.8%	349	79.5%	333	88.1%
137-WEST DADE CONNECTION	1,005	1,161	-13.4%	931	7.9%	879	14.3%	759	32.4%
150-MIAMI BEACH AIRPORT EXPRESS	1,465	1,827	-19.8%	2,143	-31.6%	1,574	-6.9%	1,618	-9.4%
152	150	176	-15.1%	307	-51.2%	199	-24.7%	214	-30.2%
183	1,838	2,341	-21.5%	1,439	27.8%	1,413	30.1%	1,275	44.2%
199	932	1,118	-16.6%	746	24.9%	658	41.6%	629	48.1%
202 - LITTLE HAITI CONN				28		39		47	
207 (7th St)-LITTLE HAVANA CONN	620	815	-23.9%	657	-5.6%	796	-22.2%	628	-1.3%
208 (8th St)-LITTLE HAVANA CONN	664	1,070	-37.9%	893	-25.6%	911	-27.1%	882	-24.7%
241 TUTTLE LIMITED				123					
301-DADE MONROE EXPRESS	920	1,019	-9.7%	697	32.0%	751	22.4%	803	14.6%
302-CARD SOUND EXPRESS	93	83	12.5%	67	37.7%	57	62.8%	69	33.7%
338 - WEEKEND EXPRESS	148	194	-23.8%	239	-38.1%	252	-41.3%	203	-27.1%
400 - SOUTH OWL	89	97	-8.7%	67	33.0%	83	7.1%	51	75.1%
401 - NORTH OWL	59	69	-14.9%	69	-14.8%	87	-32.6%	93	-37.1%
500 - CUTLER BAY LOCAL	99	80	23.3%	148	-33.6%	59	68.5%	57	72.4%
510 - SKYLAKE CIRCULATOR (*)	189	188	0.7%	88	114.8%	143	32.2%	169	11.6%
12/21 WEEKEND INTERLINE	2,193	2,995	-26.8%			2,048	7.1%	1,888	16.2%
Total	83,433	109,089	-23.5%	79,457	5.0%	75,428	10.6%	72,585	14.9%

METROBUS TOTAL MONTHLY BOARDINGS BY ROUTE

Route	Total Month	Total Month	Percent Change	Total Month	Percent Change	Total Month	Percent Change	Total Month	Percent Change
total month	Jan-24	Dec-23	MOM	Jan-23	YOY	Feb-20	Current vs Feb-20	Jan-20	YO4Y
2	44,139	56,912	-22.4%	68,787	-35.8%	75,463	-41.5%	61,583	-28.3%
3	233,053	270,385	-13.8%	159,440	46.2%	146,294	59.3%	153,012	52.3%
7	106,400	121,989	-12.8%	100,330	6.1%	86,077	23.6%	80,010	33.0%
8	123,198	146,081	-15.7%	121,591	1.3%	95,295	29.3%	94,853	29.9%
9	282,801	334,187	-15.4%	158,404	78.5%	135,924	108.1%	137,382	105.9%
10				65,103		64,874		61,756	
11	300,209	357,543	-16.0%	236,448	27.0%	187,425	60.2%	191,062	57.1%
12	62,603	68,962	-9.2%	64,464	-2.9%	55,585	12.6%	56,675	10.5%
14	28,217	40,903	-31.0%						
15	11,803	12,002	-1.7%	6,158	91.7%	4,114	186.9%	4,200	181.0%
16				54,740		49,061		50,162	
17	173,834	193,959	-10.4%	102,140	70.2%	96,715	79.7%	101,568	71.2%
19				33,321		30,847		31,286	
20	103,289	133,297	-22.5%						
21	42,635	51,743	-17.6%	39,173	8.8%	36,341	17.3%	39,613	7.6%
22	68,302	77,255	-11.6%	114,535	-40.4%	89,404	-23.6%	95,454	-28.4%
24-CORAL WAY LIMITED	67,791	80,742	-16.0%	62,339	8.7%	36,237	87.1%	47,946	41.4%
26	61,223	62,111	-1.4%	56,965	7.5%	42,683	43.4%	42,664	43.5%
27	244,074	267,059	-8.6%	183,477	33.0%	171,282	42.5%	176,169	38.5%
29				10,453		10,684		12,443	
31-BUSWAY LOCAL				31,078		29,125		29,405	
32	50,140	52,729	-4.9%	64,600	-22.4%	56,027	-10.5%	58,733	-14.6%
34 TRANSITWAY EXPRESS	38,389	33,883	13.3%	30,921	24.2%	40,159	-4.4%	40,595	-5.4%
35	61,544	72,267	-14.8%	70,384	-12.6%	59,041	4.2%	62,130	-0.9%
36	169,226	197,702	-14.4%	70,128	141.3%	61,606	174.7%	64,417	162.7%
37	125,197	140,462	-10.9%	97,215	28.8%	82,870	51.1%	88,202	41.9%
38 TRANSITWAY MAX	203,726	233,952	-12.9%	163,745	24.4%	167,379	21.7%	182,170	11.8%
39 TRANSITWAY EXPRESS	17,826	15,860	12.4%			17,853	-0.2%	19,428	-8.2%
40	50,298	51,185	-1.7%	54,803	-8.2%	40,497	24.2%	41,598	20.9%
42				29,080		20,825		22,112	
46 - LIBERTY CITY CONN.				466		814		741	
52	44,636	49,189	-9.3%	34,683	28.7%	30,522	46.2%	32,217	38.5%
54	75,994	86,006	-11.6%	81,841	-7.1%	72,125	5.4%	76,304	-0.4%
56	13,377	13,366	0.1%	7,702	73.7%	7,071	89.2%	7,673	74.3%
57				10,892		8,665		8,441	
62	69,880	87,843	-20.4%	47,989	45.6%	46,582	50.0%	48,611	43.8%
70	7,819	8,291	-5.7%	2,994	161.2%	2,690	190.7%	2,815	177.8%

METROBUS TOTAL MONTHLY BOARDINGS BY ROUTE

Route	Total Month	Total Month	Percent Change	Total Month	Percent Change	Total Month	Percent Change	Total Month	Percent Change
total month	Jan-24	Dec-23	MOM	Jan-23	YOY	Feb-20	Current vs Feb-20	Jan-20	YO4Y
72	24,375	24,419	-0.2%	17,606	38.4%	18,433	32.2%	19,078	27.8%
73	37,222	38,867	-4.2%	77,908	-52.2%	48,767	-23.7%	50,481	-26.3%
75	78,034	87,425	-10.7%	31,970	144.1%	31,994	143.9%	36,091	116.2%
77	304,046	327,723	-7.2%	231,679	31.2%	174,833	73.9%	188,385	61.4%
79	240,364	292,730	-17.9%	250,898	-4.2%	200,268	20.0%	212,322	13.2%
82 - WESTCHESTER CIRC				1,516		1,482		1,456	
87	57,635	60,969	-5.5%	46,753	23.3%	33,273	73.2%	35,841	60.8%
88	55,082	61,485	-10.4%	67,486	-18.4%	54,772	0.6%	57,301	-3.9%
95-EXPRESS GOLDEN GLADES	27,659	25,540	8.3%	20,493	35.0%	33,796	-18.2%	38,318	-27.8%
97	5,267	6,016	-12.5%	6,254	-15.8%	5,558	-5.2%	5,899	-10.7%
100	454,223	587,875	-22.7%	203,684	123.0%	170,942	165.7%	184,908	145.6%
103 - C						11,682		11,739	
103	57,319	63,942	-10.4%	48,492	18.2%	40,918	40.1%	42,773	34.0%
104	31,829	30,690	3.7%	23,827	33.6%	20,351	56.4%	22,633	40.6%
105 - E				38,420		31,302		33,758	
107	59,086	61,354	-3.7%	18,122	226.0%	16,118	266.6%	16,316	262.1%
108 - H				16,970		12,624		14,266	
110 - J				87,873		66,481		72,153	
113 - M				19,027		21,548		22,080	
115				4,241		4,334		4,455	
119 - S				314,707		242,257		260,172	
125	116,643	121,106	-3.7%	52,375	122.7%	43,178	170.1%	45,186	158.1%
132 -TRI-RAIL DORAL SHUTTLE	1,117	1,014	10.2%	916	21.9%	312	258.0%	25	4368.0%
135	49,360	52,273	-5.6%	35,340	39.7%	32,067	53.9%	32,985	49.6%
136	3,495	3,499	-0.1%	3,410	2.5%	2,524	38.5%	2,974	17.5%
137-WEST DADE CONNECTION	66,610	70,832	-6.0%	58,882	13.1%	41,167	61.8%	42,053	58.4%
150-MIAMI BEACH AIRPORT EXPRESS	46,908	59,705	-21.4%	69,450	-32.5%	51,651	-9.2%	52,978	-11.5%
152	10,489	10,867	-3.5%	25,327	-58.6%	19,325	-45.7%	20,644	-49.2%
155 - BISCAYNE GARDENS CIRC				988		881		933	
175 - NW MIAMI-DADE EXPRESS						661		614	
183	131,742	142,013	-7.2%	88,450	48.9%	77,570	69.8%	82,706	59.3%
195 EXPRESS - BROWARD BLVD						7,441		8,535	
196 EXPRESS - SHERIDAN ST						7,658		7,928	
199	53,021	58,841	-9.9%	43,344	22.3%	36,325	46.0%	38,345	38.3%
202 - LITTLE HAITI CONN				1,889		3,200		3,349	
203 - BISCAYNE MAX	30,159	31,659	-4.7%	78,770	-61.7%	66,684	-54.8%	70,834	-57.4%

METROBUS TOTAL MONTHLY BOARDINGS BY ROUTE

Route	Total Month	Total Month	Percent Change	Total Month	Percent Change	Total Month	Percent Change	Total Month	Percent Change
total month	Jan-24	Dec-23	MOM	Jan-23	YOY	Feb-20	Current vs Feb-20	Jan-20	YO4Y
204 KILLIAN MAX	13,562	12,412	9.3%	14,329	-5.4%	21,418	-36.7%	20,714	-34.5%
207 (7th St)-LITTLE HAVANA CONN	45,538	54,370	-16.2%	44,359	2.7%	38,127	19.4%	40,851	11.5%
208 (8th St)-LITTLE HAVANA CONN	43,892	56,535	-22.4%	43,432	1.1%	35,018	25.3%	39,879	10.1%
211 OVERTOWN CIRCULATOR				1,982		1,159		1,303	
211 - FLAGLER MAX	39,398	40,170	-1.9%	86,312	-54.4%	62,186	-36.6%	67,107	-41.3%
212-SWEETWATER CIRC				515		295		279	
217 - BUNCHE PARK CIRC				1,232		1,949		1,929	
238-EAST/WEST CONN				13,644		8,987		10,008	
241 TUTTLE LIMITED				6,326					
254-BROWNSVILLE CIRC				172		384		382	
267-LUDLAM LIMITED				3,655		2,978		2,992	
272 SUNSET MAX (*)	8,179	7,375	10.9%	8,067	1.4%	11,004	-25.7%	11,168	-26.8%
277-7TH AVENUE MAX				15,201		13,669		14,082	
279 - 79 STREET MAX	15,789	16,471	-4.1%	11,740	34.5%	7,228	118.4%	7,805	102.3%
286-NORTH POINTE CIRC				1,995		2,145		2,444	
287-SAGA BAY MAX	8,512	8,080	5.3%	6,592	29.1%	7,160	18.9%	7,597	12.0%
288 KENDALL MAX	10,618	10,525	0.9%	10,051	5.6%	15,249	-30.4%	16,569	-35.9%
295						4,668		4,588	
296						4,297		4,891	
297-27th AVENUE ORANGE MAX				26,706		27,125		29,610	
301-DADE MONROE EXPRESS	30,869	35,676	-13.5%	24,625	25.4%	23,838	29.5%	26,367	17.1%
302-CARD SOUND EXPRESS	3,135	3,145	-0.3%	3,030	3.5%	2,236	40.2%	2,482	26.3%
338 - WEEKEND EXPRESS	1,438	2,779	-48.3%	2,230	-35.5%	2,191	-34.4%	1,961	-26.7%
344	3,014	3,182	-5.3%	1,553	94.1%	1,919	57.1%	2,108	43.0%
400 - SOUTH OWL	2,828	2,934	-3.6%	2,380	18.8%	2,301	22.9%	1,272	122.3%
401 - NORTH OWL	1,530	1,998	-23.4%	1,787	-14.4%	2,641	-42.1%	2,973	-48.5%
500 - CUTLER BAY LOCAL	6,944	6,769	2.6%	3,825	81.5%	3,984	74.3%	4,310	61.1%
510 - SKYLAKE CIRCULATOR (*)	10,633	9,799	8.5%	8,239	29.1%	7,033	51.2%	7,265	46.4%
836 EXPRESS	7,118	5,946	19.7%	4,972	43.2%				
837 EXPRESS	4,429	3,495	26.7%	2,185	102.7%				
12/21 WEEKEND INTERLINE	22,109	36,314	-39.1%	10,192	116.9%	20,830	6.1%	19,643	12.6%
AHEPA SHUTTLE	76	71	7.0%	64	18.8%	83	-8.4%	101	-24.8%
FEDERATION GARDENS SHUTTLE	76	103	-26.2%	63	20.6%	142	-46.5%	87	-12.6%
GREEN HILLS SHUTTLE	31	19	63.2%	20	55.0%	36	-13.9%	21	47.6%
KINGS CREEK SHUTTLE	39	33	18.2%	67	-41.8%	52	-25.0%	149	-73.8%
ROBERT SHARP SHUTTLE	101	52	94.2%	70	44.3%	38	165.8%	21	381.0%
SIERRA LAKES SHUTTLE	91	95	-4.2%	60	51.7%	180	-49.4%	96	-5.2%
Total	5,103,257	5,857,057	-12.9%	4,785,128	6.6%	4,123,083	23.8%	4,316,998	18.2%

YEAR-OVER-YEAR BUS RIDERSHIP BY ROUTE SERVICE TYPE

Boardings by Service Type and Route	Average Weekday	Average Weekday	Percent Change	Average Saturday	Average Saturday	Percent Change	Average Sunday	Average Sunday	Percent Change	Total Monthly	Total Monthly	Percent Change
	Jan-24	Jan-23	24 vs 23	Jan-24	Jan-23	24 vs 23	Jan-24	Jan-23	24 vs 23	Jan-24	Jan-23	24 vs 23
Directly Operated Express Routes												
34 TRANSITWAY EXPRESS	1,745	1,406	24.2%							38,389	30,921	24.2%
39 TRANSITWAY EXPRESS	810									17,826		
95-EXPRESS GOLDEN GLADES	1,257	932	35.0%							27,659	20,493	35.0%
150-MIAMI BEACH AIRPORT EXPRESS	1,535	2,286	-32.8%	1,454	2,113	-31.2%	1,465	2,143	-31.6%	46,908	69,450	-32.5%
338 - WEEKEND EXPRESS				175	259	-32.6%	148	239	-38.1%	1,438	2,230	-35.5%
836 EXPRESS	324	226	43.2%							7,118	4,972	43.2%
837 EXPRESS	201	99	102.7%							4,429	2,185	102.7%
Subtotal Express Routes	5,872	4,948	18.7%	1,628	2,372	-31.4%	1,613	2,382	-32.3%	143,767	130,251	10.4%
Percentage of All Bus Routes	3.1%	2.8%		1.3%	2.2%		1.9%	3.0%		2.8%	2.7%	
Contracted Routes - Local Service (*)												
2	1,707	2,617	-34.8%	870	1,522	-42.8%	620	1,026	-39.6%	44,139	68,787	-35.8%
15	392	253	55.1%	398	106	274.1%	319	36	796.1%	11,803	6,158	91.7%
29		475									10,453	
46 - LIBERTY CITY CONN.		21									466	
56	572	350	63.2%	201						13,377	7,702	73.7%
70	289	136	112.5%	186			143			7,819	2,994	161.2%
72	930	660	41.0%	521	363	43.8%	364	328	11.1%	24,375	17,606	38.4%
82 - WESTCHESTER CIRC		61			46						1,516	
97	173	219	-21.0%	175	178	-1.5%	153	146	4.8%	5,267	6,254	-15.8%
115		163			90			61			4,241	
152	398	1,010	-60.6%	246	394	-37.5%	150	307	-51.2%	10,489	25,327	-58.6%
155 - BISCAYNE GARDENS CIRC		45									988	
202 - LITTLE HAITI CONN		75			26			28			1,889	
211 OVERTOWN CIRCULATOR		90									1,982	
212-SWEETWATER CIRC		23									515	
217 - BUNCHE PARK CIRC		56									1,232	
254-BROWNSVILLE CIRC		8									172	
267-LUDLAM LIMITED		166									3,655	
286-NORTH POINTE CIRC		79		0	64						1,995	
344	124	71	75.3%	73						3,014	1,553	94.1%
401 - NORTH OWL	48	59	-20.0%	48	34	40.7%	59	69	-14.8%	1,530	1,787	-14.4%
Subtotal Contracted Reg. & Circ. Routes	4,632	6,636	-30.2%	2,717	2,821	-3.7%	1,807	2,000	-9.6%	121,813	167,272	-27.2%
Percentage of All Bus Routes	2.4%	3.7%		2.2%	2.6%		2.2%	2.5%		2.4%	3.5%	

(1) Several express routes were suspended beginning at the end of March 2020, due to the SARS-CoV-2 pandemic, while other routes had alignment and schedule modifications made to them, in an ongoing effort to optimize service delivery.

(2) A second major round of changes took place with the 11/13/23 lineup known as the Better Bus Network, as listed at the start of this Metrobus section.

YEAR-OVER-YEAR BUS RIDERSHIP BY ROUTE SERVICE TYPE

Boardings by Service Type and Route	Average Weekday	Average Weekday	Percent Change	Average Saturday	Average Saturday	Percent Change	Average Sunday	Average Sunday	Percent Change	Total Monthly	Total Monthly	Percent Change
	Jan-24	Jan-23	24 vs 23	Jan-24	Jan-23	24 vs 23	Jan-24	Jan-23	24 vs 23	Jan-24	Jan-23	24 vs 23
Contracted Express Routes												
301-DADE MONROE EXPRESS	1,018	821	24.0%	968	770	25.7%	920	697	32.0%	30,869	24,625	25.4%
302-CARD SOUND EXPRESS	106	109	-2.5%	85	75	13.0%	93	67	37.7%	3,135	3,030	3.5%
Subtotal Contracted Express Routes	1,124	930	20.9%	1,052	844	24.6%	1,013	764	32.5%	34,004	27,655	23.0%
Percentage of All Bus Routes	0.6%	0.5%		0.8%	0.8%		1.2%	1.0%		0.7%	0.6%	
Limited Stop Routes												
24-CORAL WAY LIMITED	2,521	2,297	9.8%	1,733	1,575	10.0%	1,080	1,102	-2.0%	67,791	62,339	8.7%
38 TRANSITWAY MAX	7,102	5,607	26.7%	6,474	5,157	25.5%	4,317	3,951	9.2%	203,726	163,745	24.4%
203 - BISCAYNE MAX	1,371	3,580	-61.7%							30,159	78,770	-61.7%
204 KILLIAN MAX	616	651	-5.4%							13,562	14,329	-5.4%
211 - FLAGLER MAX	1,791	3,923	-54.4%							39,398	86,312	-54.4%
241 TUTTLE LIMITED		231			158			123			6,326	
272 SUNSET MAX (*)	372	367	1.4%							8,179	8,067	1.4%
277-7TH AVENUE MAX		691									15,201	
279 - 79 STREET MAX	718	534	34.5%							15,789	11,740	34.5%
287-SAGA BAY MAX	387	300	29.1%							8,512	6,592	29.1%
288 KENDALL MAX	483	457	5.6%							10,618	10,051	5.6%
297-27th AVENUE ORANGE MAX		1,214									26,706	
Subtotal Limited Stop Routes	15,360	19,852	-22.6%	8,207	6,890	19.1%	5,397	5,176	4.3%	397,734	490,178	-18.9%
Percentage of All Bus Routes	8.1%	11.1%		6.6%	6.3%		6.5%	6.5%		7.8%	10.2%	
Directly Operated Free Routes												
132 -TRI-RAIL DORAL SHUTTLE	51	42	21.9%							1,117	916	21.9%
500 - CUTLER BAY LOCAL	249	124	101.4%	242	90	168.9%	99	148	-33.6%	6,944	3,825	81.5%
510 - SKYLAKE CIRCULATOR (*)	400	342	16.9%	223	69	224.7%	189	88	114.8%	10,633	8,239	29.1%
Subtotal Free Directly Operated Routes	700	507	37.9%	465	159	193.1%	288	236	21.7%	18,694	12,980	44.0%
Percentage of All Bus Routes	0.4%	0.3%		0.4%	0.1%		0.3%	0.3%		0.4%	0.3%	
Contractor-Operated Lifeline Routes												
GREEN HILLS SHUTTLE	8	4	93.8%							31	20	55.0%
KINGS CREEK SHUTTLE	10	17	-41.8%							39	67	-41.8%
SIERRA LAKES SHUTTLE	23	15	51.7%							91	60	51.7%
ROBERT SHARP SHUTTLE	20	18	15.4%							101	70	44.3%
AHEPA SHUTTLE	19	16	18.8%							76	64	18.8%
FEDERATION GARDENS SHUTTLE				19	16	20.6%				76	63	20.6%
Subtotal Contractor-Operated Lifeline Routes	79	69	14.7%	19	16	20.6%				414	344	20.3%
Percentage of All Bus Routes	0.0%	0.0%		0.0%	0.0%					0.0%	0.0%	
All Other (Regular) Routes	162,603	146,576	10.9%	110,749	96,820	14.4%	73,316	68,898	6.4%	4,386,831	3,956,448	10.9%
Percentage of All Bus Routes	85.4%	81.6%		88.7%	88.1%		87.9%	86.7%		86.0%	82.7%	
Total Bus System	190,370	179,518	6.0%	124,838	109,921	13.6%	83,433	79,457	5.0%	5,103,257	4,785,128	6.6%

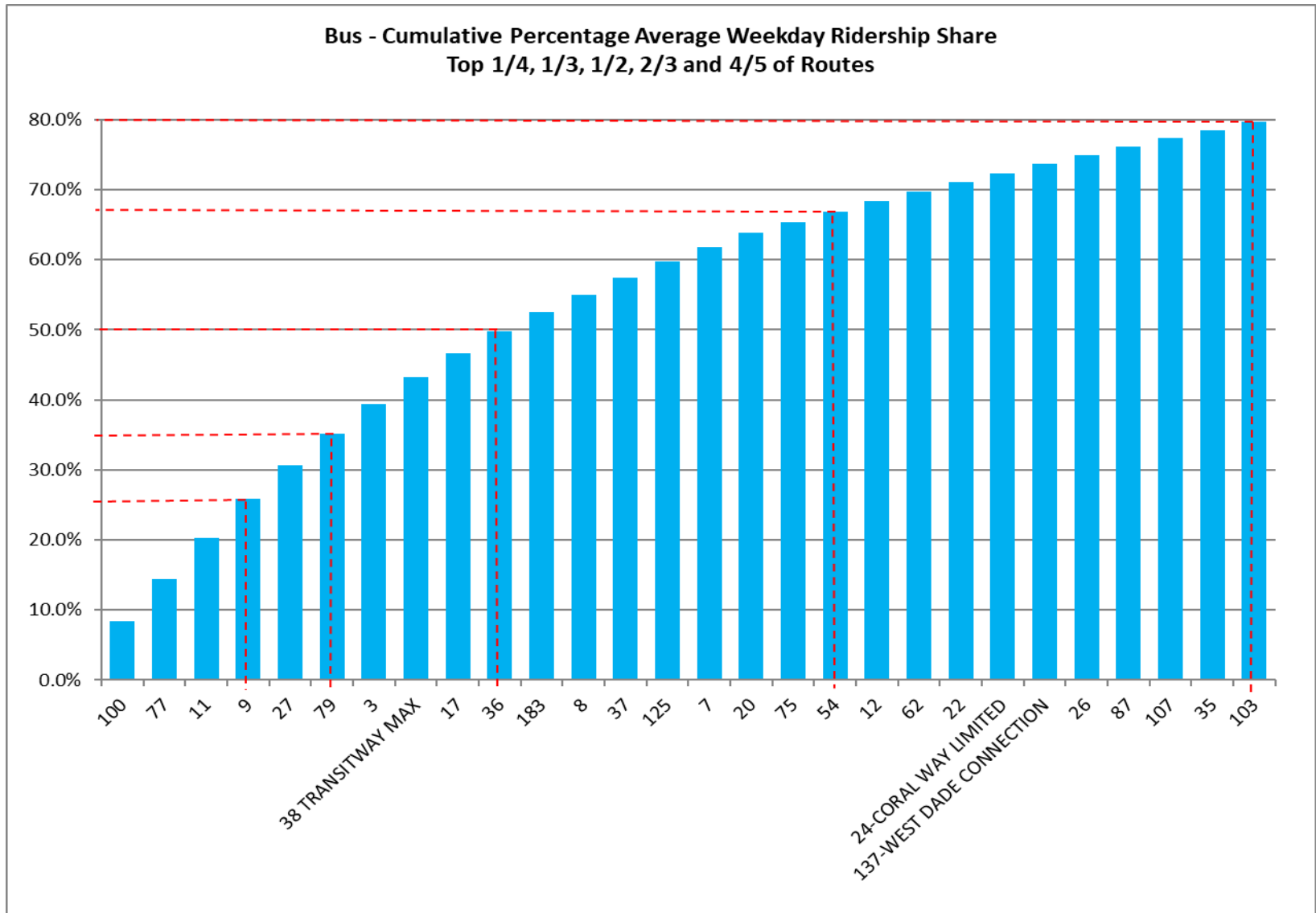
Bus Routes as Ranked by Percentage of Average Weekday Ridership January 2024

Rank	Route	Average Weekday	Percent Share	Cumul Pct Share	Rank	Route	Average Weekday	Percent Share	Cumul Pct Share	Rank	Route	Average Weekday	Percent Share	Cumul Pct Share
1	100	16,041	8.4%	8.4%	29	107	2,227	1.2%	77.3%	57	287	387	0.2%	98.8%
2	77	11,487	6.0%	14.5%	30	35	2,219	1.2%	78.5%	58	272	372	0.2%	99.0%
3	11	10,972	5.8%	20.2%	31	135	1,938	1.0%	82.7%	59	836	324	0.2%	99.2%
4	9	10,629	5.6%	25.8%	32	21	1,938	1.0%	83.7%	60	70	289	0.2%	99.3%
5	27	9,220	4.8%	30.7%	33	40	1,929	1.0%	84.7%	61	500	249	0.1%	99.5%
6	79	8,454	4.4%	35.1%	34	32	1,894	1.0%	85.7%	62	837	201	0.1%	99.6%
7	3	8,307	4.4%	39.5%	35	new 211	1,791	0.9%	86.7%	63	97	173	0.1%	99.7%
8	38	7,102	3.7%	43.2%	36	207	1,783	0.9%	87.6%	64	136	159	0.1%	99.7%
9	17	6,506	3.4%	46.6%	37	34	1,745	0.9%	88.5%	65	344	124	0.1%	99.8%
10	36	6,117	3.2%	49.8%	38	2	1,707	0.9%	89.4%	66	302	106	0.1%	99.9%
11	183	4,994	2.6%	52.4%	39	208	1,668	0.9%	90.3%	67	400	87	0.0%	99.9%
12	8	4,767	2.5%	54.9%	40	52	1,650	0.9%	91.2%	68	132	51	0.0%	99.9%
13	37	4,707	2.5%	57.4%	41	150	1,535	0.8%	92.0%	69	401	48	0.0%	100.0%
14	125	4,370	2.3%	59.7%	42	73	1,518	0.8%	92.8%	70	SL	23	0.0%	100.0%
15	7	4,045	2.1%	61.8%	43	203	1,371	0.7%	93.5%	71	RS	20	0.0%	100.0%
16	20	3,709	1.9%	63.8%	44	95	1,257	0.7%	94.2%	72	AS	19	0.0%	100.0%
17	75	2,922	1.5%	65.3%	45	104	1,188	0.6%	94.8%	73	KC	10	0.0%	100.0%
18	54	2,882	1.5%	66.8%	46	301	1,018	0.5%	95.3%	74	GH	8	0.0%	100.0%
19	12	2,846	1.5%	68.3%	47	14	941	0.5%	95.8%	entirely contracted in Jan-24				
20	62	2,578	1.4%	69.7%	48	72	930	0.5%	96.3%					
21	22	2,572	1.4%	71.0%	49	39	810	0.4%	96.7%					
22	24	2,521	1.3%	72.4%	50	279	718	0.4%	97.1%					
23	137	2,506	1.3%	73.7%	51	204	616	0.3%	97.4%					
24	26	2,363	1.2%	74.9%	52	56	572	0.3%	97.7%					
25	87	2,331	1.2%	76.1%	53	288	483	0.3%	98.0%					
26	new 103	2,182	1.1%	79.6%	54	510	400	0.2%	98.2%					
27	88	1,991	1.0%	80.7%	55	152	398	0.2%	98.4%					
28	199	1,968	1.0%	81.7%	56	15	392	0.2%	98.6%					
											Total Boardings	190,370	100.00%	100.0%

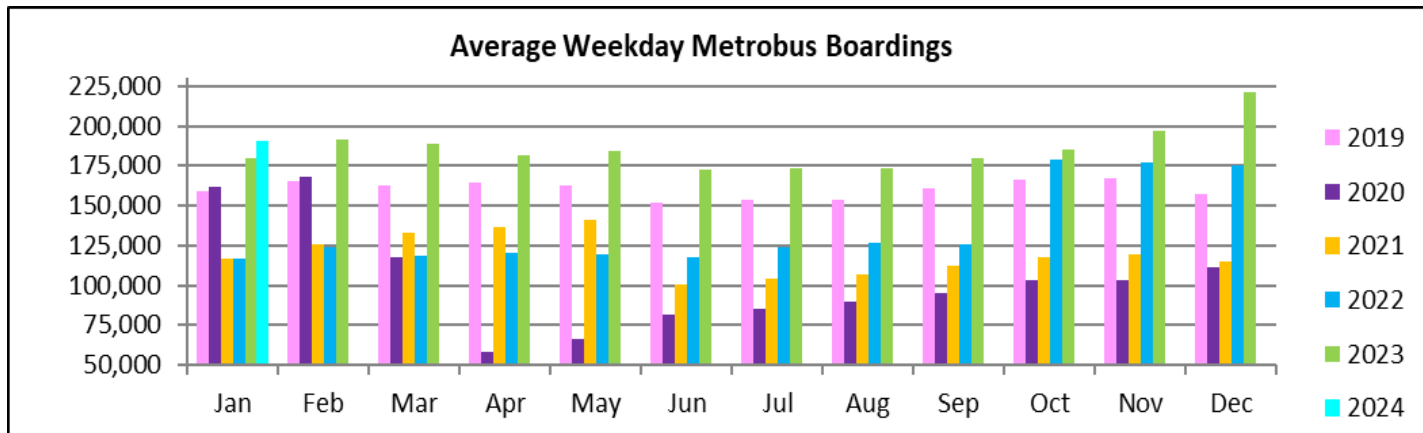
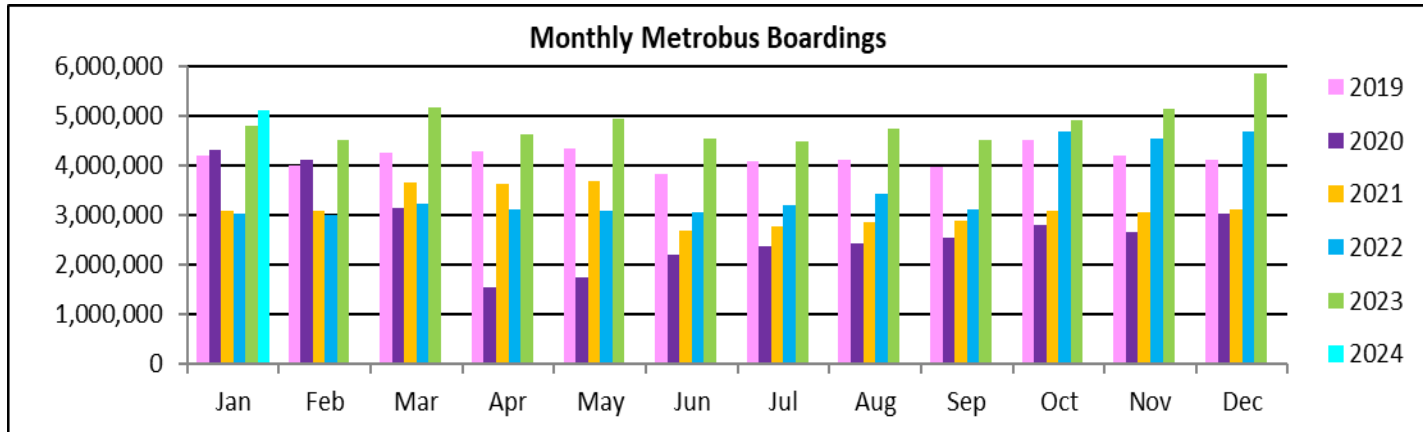
(1) Average weekday ridership rounded to the nearest unit.

(2) Includes the five Lifeline Shuttles that operate on weekdays: Ahepa (AS), Green Hills (GH), Kings Creek (KC), Robert Sharp (RS) and Sierra Lakes (SL).

METROBUS CUMULATIVE PERCENTAGE RIDERSHIP SHARE – BY ROUTE



TOTAL MONTHLY AND AVERAGE WEEKDAY RIDERSHIP YEAR OVER YEAR COMPARISON CHARTS – METROBUS



“TOP 10 / BOTTOM 10” BUS ROUTES SETS AVERAGE WEEKDAY RIDERSHIP PERFORMANCE YEAR OVER YEAR COMPARISON

Route Set (*), (1), (2)	Jan-24	Jan-23	Absolute Delta	Percent Delta	routes included in set
{ 20 }	5,603	2,740	2,863	104.5%	20, 32, 115
{ 11 }	10,972	8,598	2,374	27.6%	11, 212
{ 77 }	11,487	9,395	2,093	22.3%	77, 277
{ 17 & 22 & 75 }	12,000	10,090	1,910	18.9%	17, 22, 75, 108, 217
{ new 107 }	5,307	3,896	1,411	36.2%	35, 56, 70, 71, new 107, 248
{ 27 }	9,220	8,134	1,086	13.3%	27, 297
{ 3 & 203 }	9,677	8,671	1,007	11.6%	3, 93, 203
{ 125 }	4,370	3,438	932	27.1%	19, 107, 125
{ 62 }	2,578	1,812	767	42.3%	62, 202
135	1,938	1,438	500	34.8%	135
{ 100 }	16,041	19,219	-3,178	-16.5%	100, 105, 119, 120
{ new 211 }	11,584	13,151	-1,567	-11.9%	8, 24, 51, 82, 137, new 211
{ 73 & 183 }	6,512	7,815	-1,303	-16.7%	57, 73, 183, 238, 267, 286
{ 2 }	1,707	2,707	-1,000	-36.9%	2
150	1,535	2,286	-751	-32.8%	150
{ 37 & 54 }	7,589	8,304	-715	-8.6%	29, 37, 42, 54, 254
88	1,991	2,455	-464	-18.9%	88
{ 52 }	2,048	2,345	-297	-12.7%	52, 152, 252
40	1,929	2,199	-271	-12.3%	40
{ 279 }	9,171	9,409	-237	-2.5%	79, 112, 279

(*) Averages rounded to the nearest boarding, data as estimated from automatic passenger counter (APC) system; Lifeline shuttles excluded.

(1) The route sets, denoted by brackets, include the new 11/13/2023 lineup's Better Bus Network route designations, as well as older routes present for the first part of the month and previous months and years, then either renamed, absorbed, or eliminated. The sets were defined to enable reasonably fair comparisons between pre- and post-BBN timeframes, to the extent possible and practical, given the complexity of the changes for some of the routes and sets. The definitions are based on information from the DTPW website, and subject to future adjustments, if necessary.

(2) The adjective "new" in front of some new Better Bus Network-generated (recycled) route numbers was added to help prevent confusion with older but different routes with the same number present in previous months or years.

“TOP 10 / BOTTOM 10” BUS ROUTES SETS AVERAGE WEEKDAY RIDERSHIP PERFORMANCE MONTH OVER 3-MONTH PRIOR COMPARISON

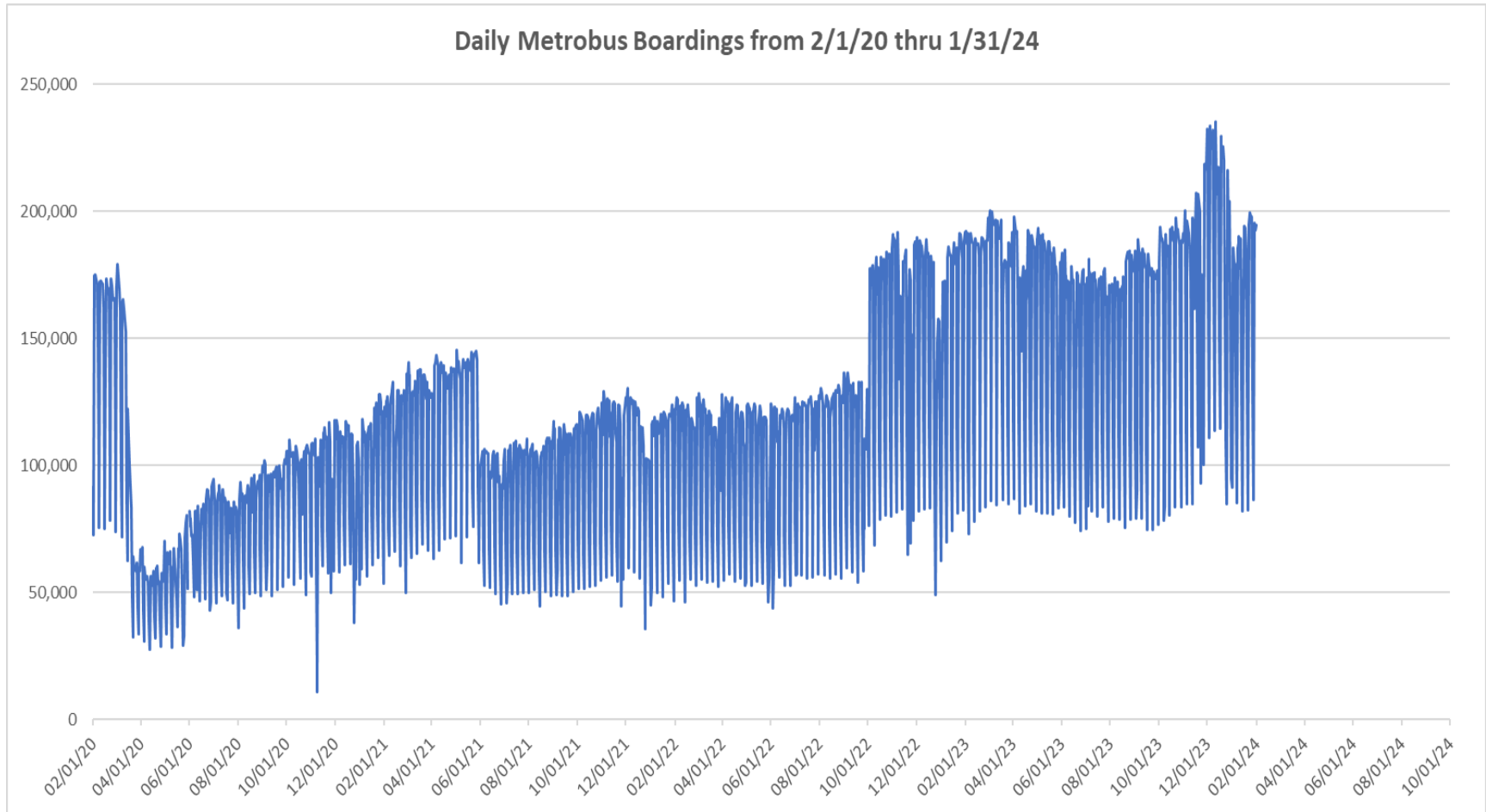
Route Set (*), (1), (2)	Jan-24	Oct-23	Absolute Delta	Percent Delta	routes included in set
{ 20 }	5,603	2,850	2,753	96.6%	20, 32, 115
{ 38 }	7,226	5,790	1,436	24.8%	38, 344
{ 11 }	10,972	9,644	1,328	13.8%	11, 212
{ 17 & 22 & 75 }	12,000	10,796	1,204	11.1%	17, 22, 75, 108, 217
{ 27 }	9,220	8,339	881	10.6%	27, 297
{ new 107 }	5,307	4,447	860	19.3%	35, 56, 70, 71, new 107, 248
{ 77 }	11,487	10,838	649	6.0%	77, 277
{ 3 & 203 }	9,677	9,082	596	6.6%	3, 93, 203
{ 36 }	6,117	5,600	517	9.2%	36, 110
26	2,363	1,877	485	25.8%	26
{ 73 & 183 }	6,512	7,890	-1,378	-17.5%	57, 73, 183, 238, 267, 286
{ 2 }	1,707	3,048	-1,341	-44.0%	2
{ new 211 }	11,584	12,849	-1,265	-9.8%	8, 24, 51, 82, 137, new 211
{ 100 }	16,041	17,117	-1,076	-6.3%	100, 105, 119, 120
150	1,535	2,149	-615	-28.6%	150
{ 37 & 54 }	7,589	8,082	-493	-6.1%	29, 37, 42, 54, 254
88	1,991	2,419	-428	-17.7%	88
40	1,929	2,344	-416	-17.7%	40
{ 52 }	2,048	2,442	-394	-16.1%	52, 152, 252
{ 9 }	10,629	10,942	-313	-2.9%	9, 10, 16

(*) Averages rounded to the nearest boarding, data as estimated from automatic passenger counter (APC) system; Lifeline shuttles excluded.

(1) The route sets, denoted by brackets, include the new 11/13/2023 lineup's Better Bus Network route designations, as well as older routes present for the first part of the month and previous months and years, then either renamed, absorbed, or eliminated. The sets were defined to enable reasonably fair comparisons between pre- and post-BBN timeframes, to the extent possible and practical, given the complexity of the changes for some of the routes and sets. The definitions are based on information from the DTPW website, and subject to future adjustments, if necessary.

(2) The adjective "new" in front of some new Better Bus Network-generated (recycled) route numbers was added to help prevent confusion with older but different routes with the same number present in previous months or years.

DAILY METROBUS RIDERSHIP SINCE FEBRUARY 1, 2020



- (1) There was no Metrobus, Metrorail and Metromover service on 5/31/20, as a safety precaution, and no service for any of the four modes on 9/28/22, as a result of Hurricane Ian.
- (2) The dip at the start of the second week of December 2020 is due to Hurricane Eta.
- (3) Daily variations from October 2022 onward are estimated from reports made available by the Bus APC data vendor; the data is based on statistical sampling.
- (4) The reduction seen beginning 6/1/21 is partly due to the resumption of fares and partly the result of resuming reporting Cubic farebox data rather than bus APC counts; the jump seen at the start of December 2022 is due to the return to APC bus ridership counts reporting beginning 10/1/22; the peak in Dec 2023 is attributable to the Better Bus Network launch period and attendant free fares.
- (5) Periodic (weekly) variations are prominent, since weekday ridership is almost always significantly higher than weekend or holiday ridership.

METROBUS PARKING PATRONAGE SUMMARY

January 2024

PARK-RIDE LOT	ACTUAL AVAILABLE SPACES	ACTUAL OCCUPANCY	PERCENT OCCUPANCY
Transitway / SW 152nd St	200	136	68%
Transitway / SW 168th St (*)	149	0	0%
Transitway / SW 200th Street	100	30	30%
Transitway / SW 112 Ave (Target)	450	127	28%
Transitway / SW 244th St	95	67	71%
Transitway / SW 296th St	139	20	14%
Transitway / SW 344th St	248	166	67%
Coral Reef Drive 117/ Turnpike	95	79	83%
Golden Glades Facility	2,150	437	20%
Hammocks Town Center (SW 152 Ave / SW 104 St)	50	13	26%
Kendall Dr./SW 127th Ave	161	10	6%
West Kendall Transit Term (Kendall Dr / SW162 Ave)	40	12	30%
NW 7th Avenue Transit Village (NW 7 Ave / NW 62 St)	25	17	68%
Miami Gardens Dr. / NW 73rd Ave	136	3	2%
Dolphin Station	348	87	25%
Tamiami Station (eff 11-2022)	442	53	12%
I-75 / Miami Gardens Dr (**)	298	0	0%
TOTAL	5,126	1,257	25%

(*) Closed for construction beginning January 2022

(**) Route 175 Suspended 3/27/2020

Metrorail



January 2024

METRORAIL AVERAGE WEEKDAY BOARDINGS BY STATION (†)

Weekdays	Average Weekday	Average Weekday	Percent Change	Average Weekday	Percent Change	Average Weekday	Percent Change	Average Weekday	Percent Change
STATIONS	Jan-24	Jan-23	YOY	Feb-20	Current vs Feb-20	Dec-23	MOM	Jan-20	YO4Y
ALLAPATTAH	1,669	1,577	5.8%	1,942	-14.1%	1,951	-14.5%	1,905	-12.4%
BRICKELL	5,335	5,011	6.5%	6,529	-18.3%	5,287	0.9%	6,245	-14.6%
BROWNSVILLE	499	701	-28.8%	862	-42.1%	627	-20.4%	851	-41.4%
CIVIC CENTER	3,998	3,728	7.3%	6,143	-34.9%	4,273	-6.4%	5,945	-32.7%
COCONUT GROVE	1,648	1,417	16.3%	1,795	-8.2%	1,675	-1.6%	1,689	-2.5%
CULMER	1,009	968	4.3%	1,392	-27.5%	1,125	-10.3%	1,340	-24.7%
DADELAND NORTH	4,164	3,688	12.9%	5,926	-29.7%	2,812	48.1%	5,748	-27.6%
DADELAND SOUTH	4,783	4,265	12.2%	7,150	-33.1%	3,750	27.6%	6,873	-30.4%
DOUGLAS ROAD	2,876	2,714	6.0%	3,624	-20.6%	3,188	-9.8%	3,483	-17.4%
DR. MARTIN LUTHER KING, JR.	763	790	-3.4%	1,157	-34.0%	951	-19.8%	1,148	-33.5%
EARLINGTON HEIGHTS	1,399	1,305	7.2%	1,662	-15.8%	1,519	-7.9%	1,586	-11.8%
GOVERNMENT CENTER	6,770	6,247	8.4%	10,557	-35.9%	5,948	13.8%	9,560	-29.2%
HIALEAH	1,068	844	26.6%	1,253	-14.7%	1,233	-13.4%	1,230	-13.2%
MIAMI INTERNATIONAL AIRPORT	1,340	1,301	3.0%	1,711	-21.7%	1,176	14.0%	1,678	-20.2%
NORTHSIDE	1,311	1,228	6.7%	1,476	-11.2%	1,633	-19.7%	1,401	-6.5%
OKEECHOBEE	927	869	6.7%	1,164	-20.4%	955	-2.9%	1,133	-18.2%
OVERTOWN / ARENA	1,885	1,509	24.9%	2,274	-17.1%	1,684	11.9%	2,205	-14.5%
PALMETTO	1,190	1,193	-0.3%	1,543	-22.9%	1,374	-13.4%	1,494	-20.4%
SANTA CLARA	761	650	17.1%	812	-6.2%	837	-9.1%	780	-2.4%
SOUTH MIAMI	2,111	1,936	9.0%	3,015	-30.0%	2,032	3.9%	2,896	-27.1%
TRI-RAIL	1,151	1,083	6.3%	1,207	-4.6%	1,333	-13.6%	1,184	-2.8%
UNIVERSITY	1,808	1,665	8.6%	2,784	-35.0%	1,510	19.7%	2,370	-23.7%
VIZCAYA	1,259	1,099	14.6%	1,390	-9.4%	1,399	-10.0%	1,336	-5.8%
TOTAL	49,724	45,784	8.6%	67,367	-26.2%	48,271	3.0%	64,081	-22.4%

(†) In this table and those which follow, “YOY” stands for “year-over-year”, “MOM” for “month-over-month” and “YO4Y” for “year over four years”, i.e., current month vs 12 months prior, one month prior, and 48 months prior, respectively. The February 2020 numbers serve as a pre-pandemic benchmark.

METRORAIL AVERAGE SATURDAY BOARDINGS BY STATION

Saturdays	Average Saturday	Average Saturday	Percent Change	Average Saturday	Percent Change	Average Saturday	Percent Change	Average Saturday	Percent Change
STATIONS	Jan-24	Jan-23	YOY	Feb-20	Current vs Feb-20	Dec-23	MOM	Jan-20	YO4Y
ALLAPATTAH	875	896	-2.3%	1,051	-16.8%	1,128	-22.4%	1,034	-15.4%
BRICKELL	2,740	2,540	7.9%	2,811	-2.5%	3,188	-14.1%	2,677	2.4%
BROWNSVILLE	315	416	-24.1%	520	-39.3%	423	-25.4%	532	-40.7%
CIVIC CENTER	661	657	0.6%	959	-31.2%	916	-27.9%	918	-28.1%
COCONUT GROVE	833	773	7.8%	928	-10.3%	1,029	-19.1%	843	-1.2%
CULMER	472	433	9.0%	721	-34.6%	616	-23.5%	727	-35.1%
DADELAND NORTH	1,345	1,372	-2.0%	1,994	-32.6%	1,190	13.0%	1,883	-28.6%
DADELAND SOUTH	1,991	1,891	5.3%	2,625	-24.2%	2,053	-3.0%	2,570	-22.5%
DOUGLAS ROAD	1,178	1,162	1.4%	1,319	-10.7%	1,571	-25.0%	1,331	-11.5%
DR. MARTIN LUTHER KING, JR.	439	466	-5.9%	625	-29.8%	787	-44.3%	627	-30.0%
EARLINGTON HEIGHTS	806	698	15.4%	935	-13.8%	1,025	-21.3%	902	-10.6%
GOVERNMENT CENTER	2,832	2,834	-0.1%	4,262	-33.6%	3,210	-11.8%	3,571	-20.7%
HIALEAH	508	395	28.5%	583	-12.8%	645	-21.2%	614	-17.3%
MIAMI INTERNATIONAL AIRPORT	960	969	-0.9%	1,330	-27.8%	951	1.0%	1,316	-27.1%
NORTHSIDE	747	720	3.8%	878	-14.9%	1,054	-29.1%	900	-17.0%
OKEECHOBEE	371	319	16.4%	408	-9.1%	438	-15.3%	382	-2.7%
OVERTOWN / ARENA	679	587	15.7%	678	0.2%	759	-10.5%	572	18.9%
PALMETTO	369	382	-3.5%	458	-19.5%	544	-32.2%	422	-12.7%
SANTA CLARA	350	325	7.9%	422	-17.0%	485	-27.8%	382	-8.4%
SOUTH MIAMI	950	969	-1.9%	1,256	-24.4%	1,025	-7.3%	1,155	-17.7%
TRI-RAIL	585	519	12.7%	614	-4.8%	808	-27.6%	554	5.6%
UNIVERSITY	630	525	19.9%	714	-11.8%	643	-2.1%	660	-4.6%
VIZCAYA	555	500	10.8%	622	-10.8%	788	-29.6%	581	-4.5%
TOTAL	21,187	20,346	4.1%	26,714	-20.7%	25,275	-16.2%	25,150	-15.8%

METRORAIL AVERAGE SUNDAY BOARDINGS BY STATION

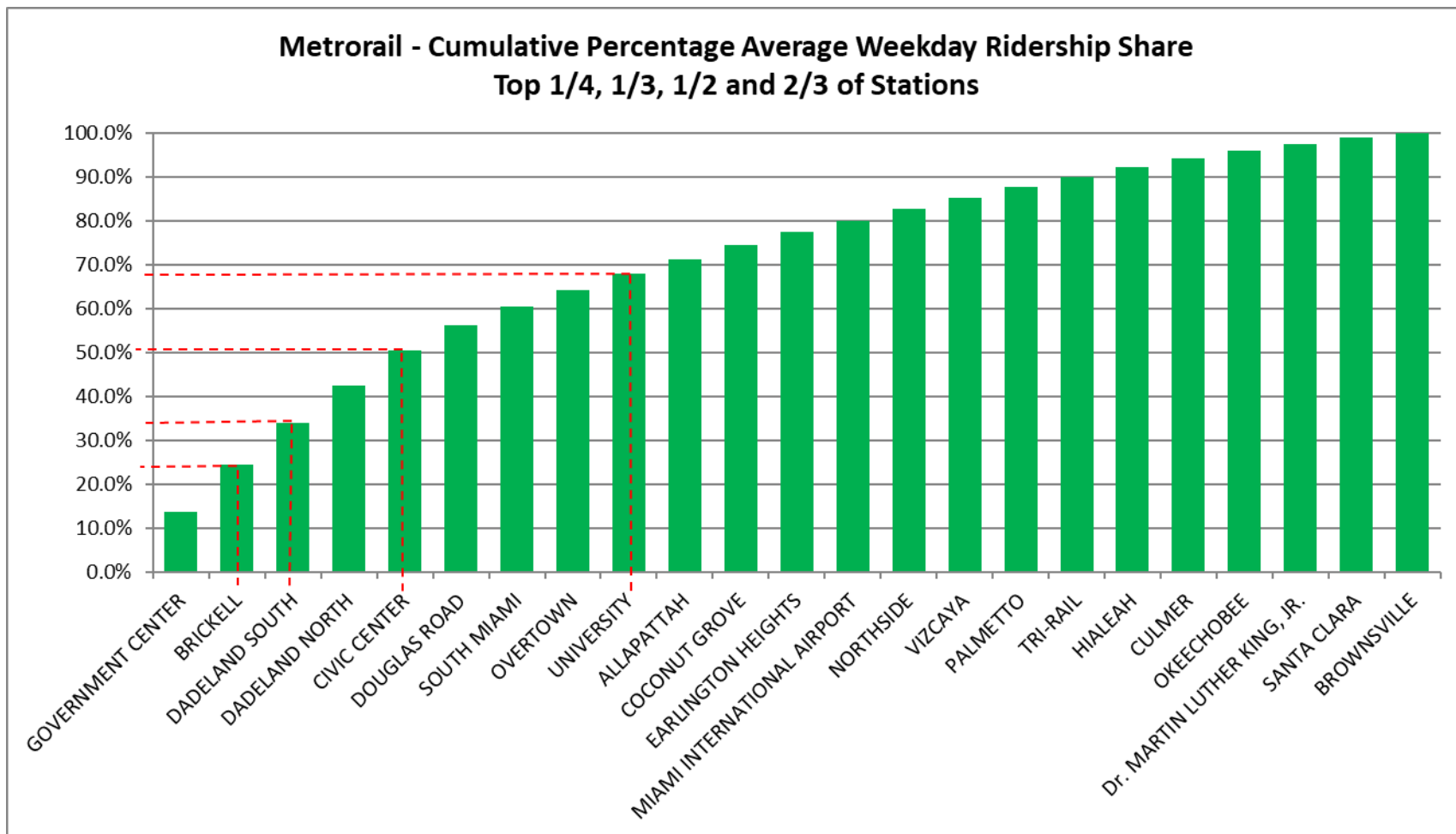
Sundays	Average Sunday	Average Sunday	Percent Change	Average Sunday	Percent Change	Average Sunday	Percent Change	Average Sunday	Percent Change
STATIONS	Jan-24	Jan-23	YOY	Feb-20	Current vs Feb-20	Dec-23	MOM	Jan-20	YO4Y
ALLAPATTAH	607	643	-5.6%	791	-23.2%	836	-27.3%	738	-17.7%
BRICKELL	2,040	1,961	4.1%	2,379	-14.2%	2,350	-13.2%	2,076	-1.7%
BROWNSVILLE	201	296	-32.2%	406	-50.6%	350	-42.6%	392	-48.8%
CIVIC CENTER	482	532	-9.3%	791	-39.1%	669	-28.0%	690	-30.1%
COCONUT GROVE	683	599	14.0%	838	-18.5%	924	-26.1%	672	1.7%
CULMER	357	328	8.9%	616	-42.1%	494	-27.8%	585	-39.0%
DADELAND NORTH	1,144	1,093	4.7%	1,685	-32.1%	958	19.4%	1,453	-21.3%
DADELAND SOUTH	1,632	1,403	16.3%	2,210	-26.2%	1,673	-2.5%	1,996	-18.3%
DOUGLAS ROAD	887	860	3.2%	1,090	-18.6%	1,304	-31.9%	952	-6.7%
DR. MARTIN LUTHER KING, JR.	321	316	1.4%	506	-36.6%	497	-35.4%	441	-27.3%
EARLINGTON HEIGHTS	548	527	4.1%	799	-31.4%	805	-31.9%	730	-24.9%
GOVERNMENT CENTER	2,745	2,603	5.4%	4,044	-32.1%	2,152	27.5%	2,816	-2.5%
HIALEAH	360	289	24.6%	472	-23.8%	504	-28.6%	466	-22.8%
MIAMI INTERNATIONAL AIRPORT	990	1,033	-4.1%	1,343	-26.3%	938	5.5%	1,302	-23.9%
NORTHSIDE	565	563	0.3%	653	-13.5%	792	-28.7%	655	-13.8%
OKEECHOBEE	255	195	30.4%	273	-6.9%	321	-20.7%	261	-2.3%
OVERTOWN / ARENA	554	446	24.3%	544	1.8%	534	3.8%	486	14.0%
PALMETTO	265	239	11.0%	336	-21.1%	364	-27.0%	266	-0.1%
SANTA CLARA	229	222	2.8%	280	-18.2%	324	-29.4%	241	-5.2%
SOUTH MIAMI	744	694	7.2%	987	-24.6%	814	-8.6%	824	-9.7%
TRI-RAIL	369	358	2.8%	528	-30.2%	599	-38.4%	527	-30.0%
UNIVERSITY	524	467	12.3%	608	-13.8%	459	14.2%	468	12.1%
VIZCAYA	453	382	18.3%	524	-13.7%	565	-19.9%	441	2.7%
TOTAL	16,952	16,048	5.6%	22,701	-25.3%	19,225	-11.8%	19,474	-13.0%

METRORAIL TOTAL MONTHLY BOARDINGS BY STATION

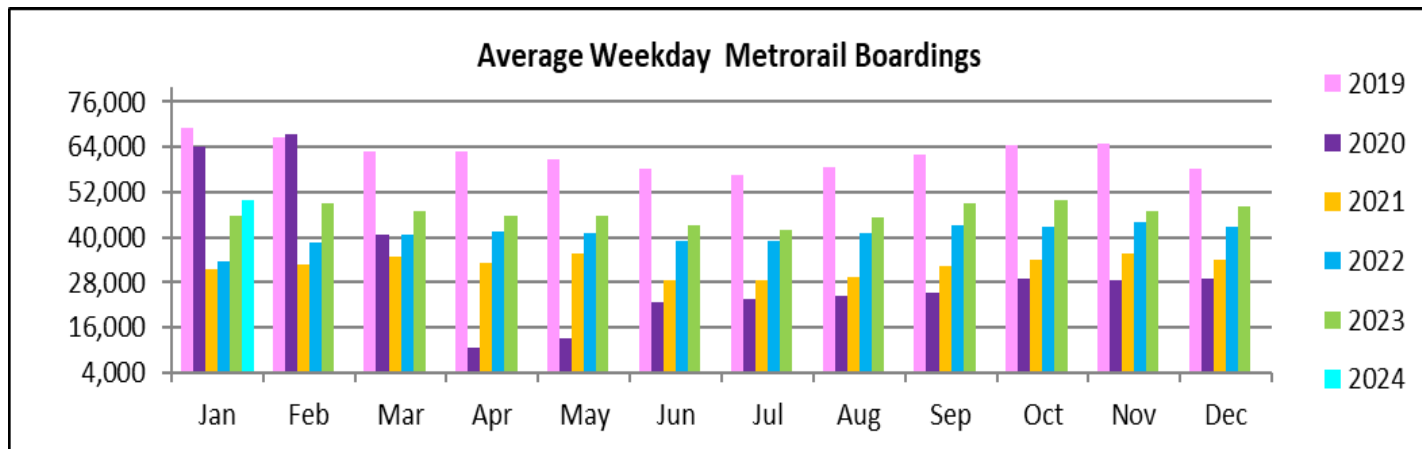
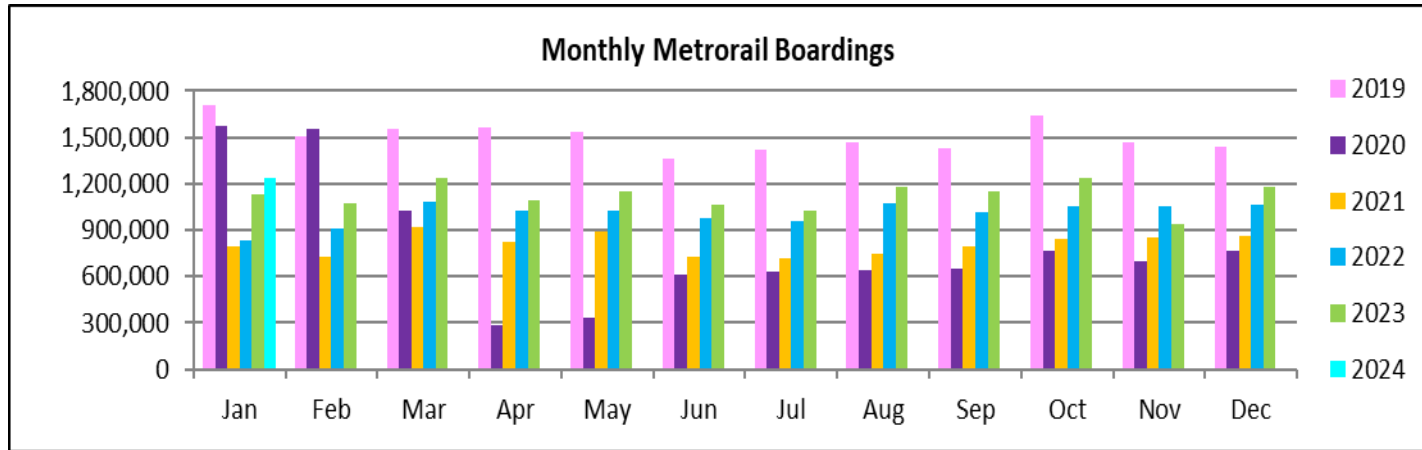
Monthly Totals	Total Month	Total Month	Percent Change	Total Month	Percent Change	Total Month	Percent Change	Total Month	Percent Change
STATIONS	Jan-24	Jan-23	YOY	Feb-20	Current vs Feb-20	Dec-23	MOM	Jan-20	YO4Y
ALLAPATTAH	42,559	40,489	5.1%	46,868	-9.2%	49,466	-14.0%	49,119	-13.4%
BRICKELL	136,256	126,195	8.0%	152,259	-10.5%	135,159	0.8%	155,872	-12.6%
BROWNSVILLE	12,674	18,173	-30.3%	21,285	-40.5%	12,734	-0.5%	22,905	-44.7%
CIVIC CENTER	89,857	81,773	9.9%	128,921	-30.3%	93,969	-4.4%	133,416	-32.6%
COCONUT GROVE	42,211	36,194	16.6%	43,580	-3.1%	45,152	-6.5%	43,211	-2.3%
CULMER	25,298	23,845	6.1%	33,497	-24.5%	28,451	-11.1%	34,802	-27.3%
DADELAND NORTH	99,896	88,217	13.2%	132,894	-24.8%	67,239	48.6%	137,680	-27.4%
DADELAND SOUTH	117,845	104,398	12.9%	162,416	-27.4%	94,684	24.5%	167,844	-29.8%
DOUGLAS ROAD	68,819	66,291	3.8%	82,141	-16.2%	78,669	-12.5%	85,185	-19.2%
DR. MARTIN LUTHER KING, JR.	19,956	20,382	-2.1%	27,980	-28.7%	26,150	-23.7%	29,720	-32.9%
EARLINGTON HEIGHTS	36,117	33,137	9.0%	40,697	-11.3%	33,852	6.7%	41,558	-13.1%
GOVERNMENT CENTER	169,505	155,609	8.9%	243,414	-30.4%	147,694	14.8%	233,579	-27.4%
HIALEAH	26,961	20,957	28.6%	29,516	-8.7%	28,452	-5.2%	31,416	-14.2%
MIAMI INTERNATIONAL AIRPORT	38,097	37,559	1.4%	46,115	-17.4%	34,093	11.7%	48,780	-21.9%
NORTHSIDE	34,145	31,935	6.9%	36,127	-5.5%	42,349	-19.4%	37,168	-8.1%
OKEECHOBEE	22,842	20,601	10.9%	26,026	-12.2%	23,245	-1.7%	27,238	-16.1%
OVERTOWN / ARENA	45,883	35,950	27.6%	49,911	-8.1%	30,960	48.2%	51,765	-11.4%
PALMETTO	28,508	27,863	2.3%	33,944	-16.0%	32,295	-11.7%	35,141	-18.9%
SANTA CLARA	18,993	16,266	16.8%	19,245	-1.3%	20,207	-6.0%	19,692	-3.5%
SOUTH MIAMI	52,606	48,314	8.9%	69,412	-24.2%	50,366	4.4%	71,052	-26.0%
TRI-RAIL	29,177	26,812	8.8%	29,120	0.2%	34,212	-14.7%	30,432	-4.1%
UNIVERSITY	43,544	39,197	11.1%	61,253	-28.9%	33,325	30.7%	55,395	-21.4%
VIZCAYA	31,601	27,183	16.3%	32,497	-2.8%	34,549	-8.5%	33,370	-5.3%
TOTAL	1,233,350	1,127,340	9.4%	1,549,118	-20.4%	1,177,272	4.8%	1,576,340	-21.8%

(†) A transition from Nextfare (faregate) data to a video camera system at all Rail stations was made necessary by the Better Bus Network launch on 11/13/2023 and its attendant free fares. This resulted in data gaps in Dec-23; NextFare data from the faregate resumed on New year's Day 2024.

METRORAIL CUMULATIVE PERCENTAGE RIDERSHIP SHARE



TOTAL MONTHLY AND AVERAGE WEEKDAY RIDERSHIP YEAR OVER YEAR COMPARISON CHARTS – METRORAIL



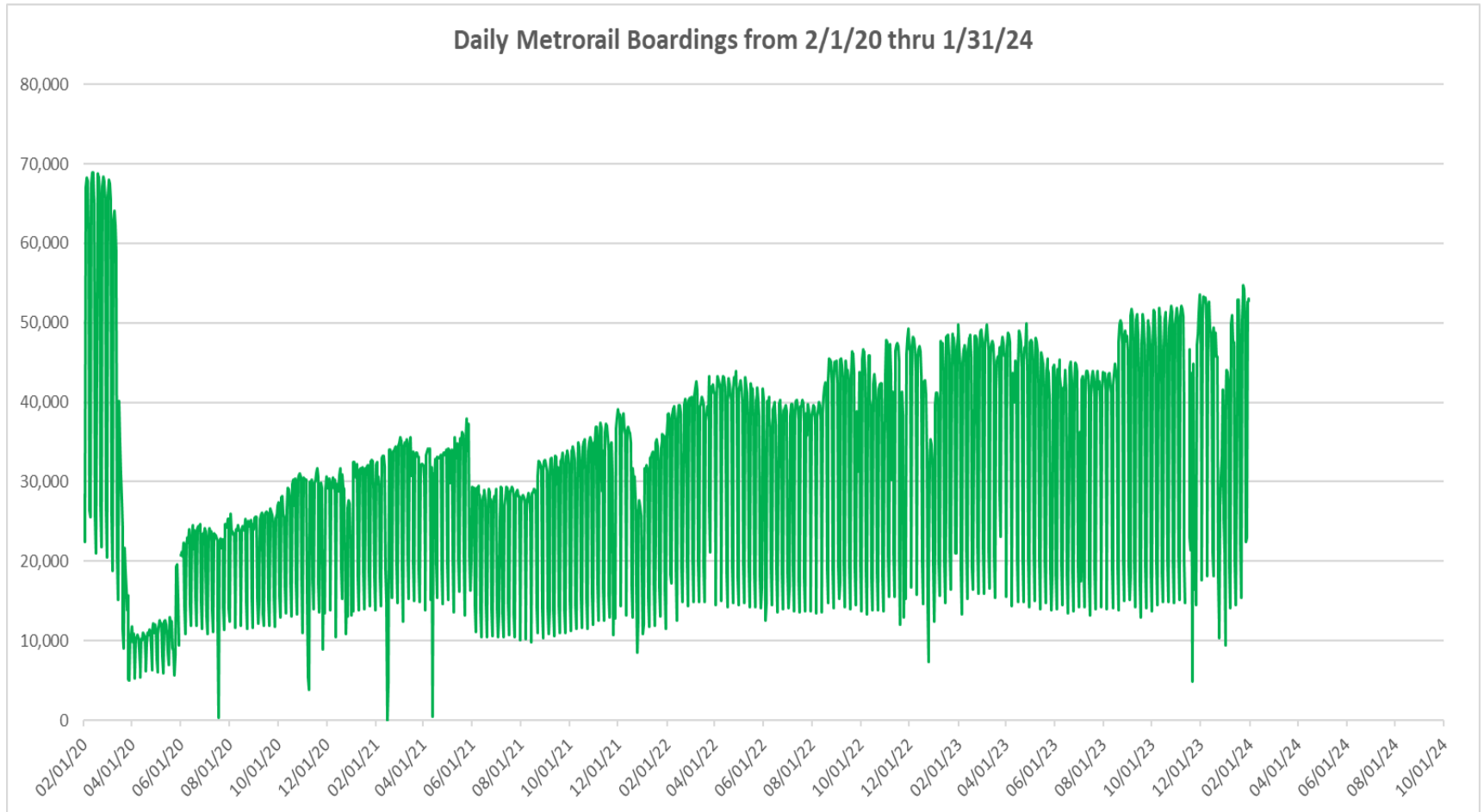
**“TOP 5 / BOTTOM 5” RAIL STATIONS AVERAGE WEEKDAY RIDERSHIP PERFORMANCE
YEAR OVER YEAR COMPARISONS**

Station	Jan-24	Jan-23	Absolute Delta (1)	Percent Delta
GOVERNMENT CENTER	6,770	6,247	523	8.4%
DADELAND SOUTH	4,783	4,265	519	12.2%
DADELAND NORTH	4,164	3,688	476	12.9%
OVERTOWN	1,885	1,509	376	24.9%
BRICKELL	5,335	5,011	323	6.5%
BROWNSVILLE	499	701	-202	-28.8%
Dr. MARTIN LUTHER KING, JR.	763	790	-27	-3.4%
PALMETTO	1,190	1,193	-3	-0.3%
MIAMI INTERNATIONAL AIRPORT	1,340	1,301	39	3.0%
CULMER	1,009	968	41	4.3%

(1) Averages rounded to the nearest boarding.

(2) As a result of the SARS-CoV-2 pandemic, rides were fare-free beginning March 22, 2020, leading to the use of a video camera counter system from that date going forward. Fares were reinstated June 1, 2021, and ridership data from the faregate system rather than the video cameras resumed. Video camera use was reinstated a second time, for the launch of the Better Bus Network on 11/13/2023, and its attendant free fares. NextFare faregate data resumed on New Year's Day 2024.

DAILY METRORAIL RIDERSHIP SINCE FEBRUARY 1, 2020



- (1) There was no Metrobus, Metrorail and Metromover service on 5/31/20, as a safety precaution, and no service for any of the four modes on 9/28/22 as a result of Hurricane Ian..
- (2) The dip at the start of the second week of December 2020 is due to Hurricane Eta; these are *raw data* from the Unleash Live contractor AI video system.
- (3) The dip on 4/13/21 is due to a loss of connectivity at all stations, affecting a few stations over the next two days as well; a similar loss of connectivity is seen on 11/21/23.
- (4) The reduction seen beginning 6/1/21 is partly due to the resumption of fares and partly the result of resuming reporting Cubic faregate data rather than video camera counts.
- (5) As a result of free fares to launch the Better Bus Network, faregates are open beginning 11/13/23, and Unleash Live AI video system ridership counts are reported starting 11/17/23.
- (6) Periodic (weekly) variations are prominent, since weekday ridership is almost always significantly higher than weekend or holiday ridership; a few low-count days are due to system outages, often associated with construction or renovation work..

METRORAIL PARKING PATRONAGE SUMMARY

January 2024

PARK-RIDE LOT	ACTUAL CAPACITY (1)	ACTUAL OCCUPANCY (2)	PERCENT OCCUPANCY
DADELAND SOUTH	1,260	733	58%
DADELAND NORTH	1,963	721	37%
SOUTH MIAMI	1,081	270	25%
UNIVERSITY	260	180	69%
COCONUT GROVE	100	10	10%
VIZCAYA	120	45	38%
CULMER	25	16	65%
SANTA CLARA	61	40	66%
ALLAPATTAH	74	6	8%
EARLINGTON HEIGHTS	361	156	43%
BROWNSVILLE	100	74	74%
DR. MARTIN LUTHER KING JR. (MDT)	62	0	0%
DR. MARTIN LUTHER KING JR. (GARAGE)	631	0	0%
NORTHSIDE	100	74	74%
HIALEAH	338	41	12%
OKEECHOBEE	1,398	136	10%
PALMETTO	700	145	21%
TOTAL	8,856	2,648	30%

- (1) Number of spaces could vary each week; shown are available spaces during final week of month, as submitted by DTPW Safety & Security office.
- (2) All sampled occupancy data provided by DTPW Safety & Security office; calculations are revisions to those submitted by that entity.
- (3) Daily averages rounded to nearest unit, with fewer counts at some stations due to shortage of DTPW Safety & Security office staff; calculations are based on sampled counted days only per raw data submitted, with resulting average daily occupancy shown.
- (*) Closed throughout the month, per the DTPW Safety & Security office.

Metromover

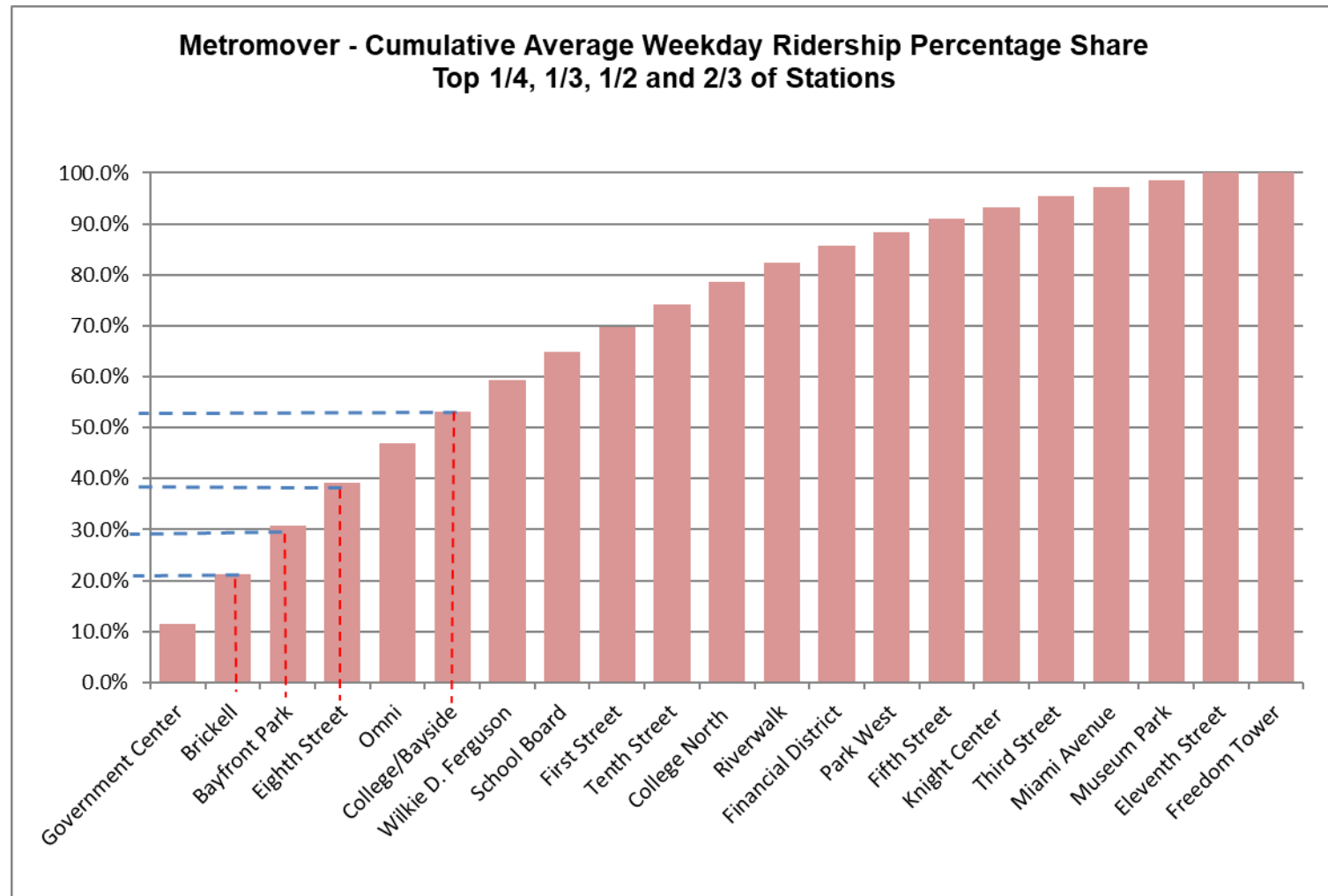


METROMOVER MONTHLY AND AVERAGE DAILY BOARDINGS BY STATION

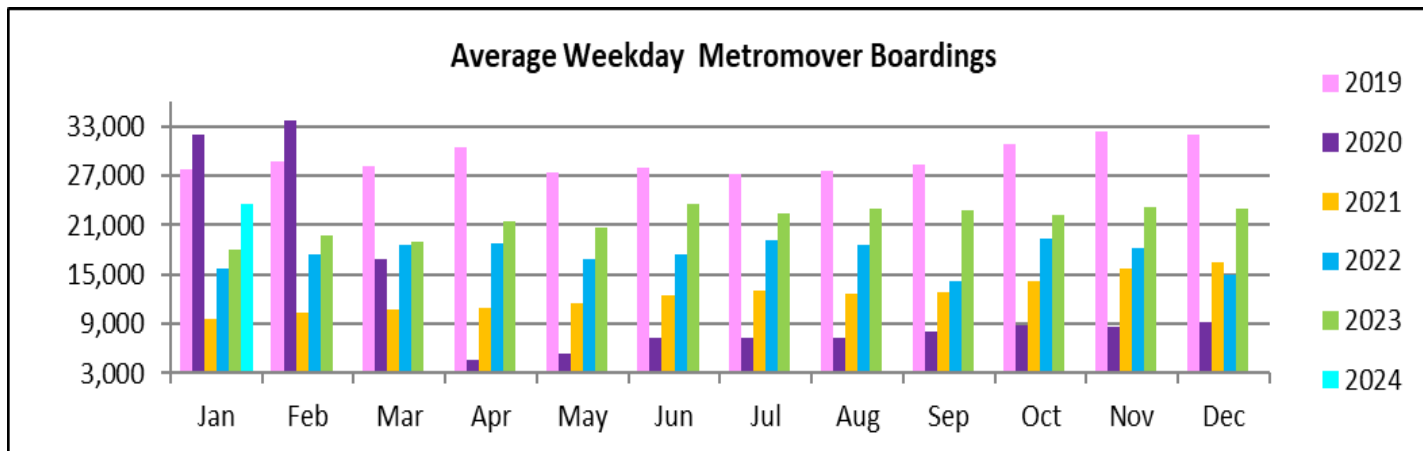
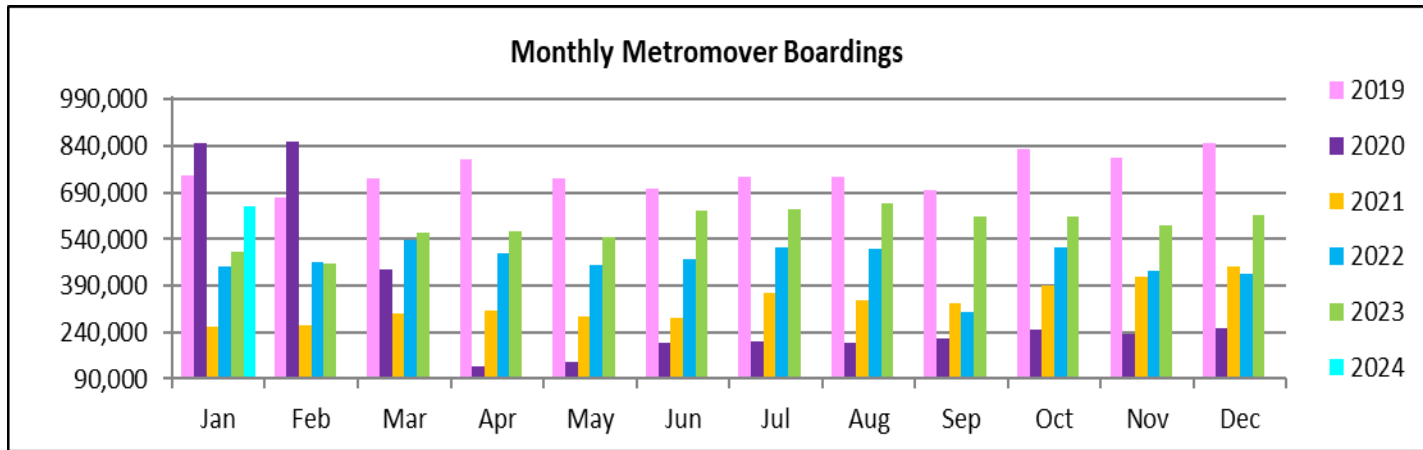
	Average Weekday	Average Weekday	Percent Change	Average Saturday	Average Saturday	Percent Change	Average Sunday	Average Sunday	Percent Change	Total Monthly	Total Monthly	Percent Change
STATIONS	Jan-24	Jan-23	24 vs 23	Jan-24	Jan-23	24 vs 23	Jan-24	Jan-23	24 vs 23	Jan-24	Jan-23	24 vs 23
School Board	1,264	382	230.7%	770	281	173.9%	943	284	231.6%	34,738	10,740	223.4%
Omni	1,836	1,655	10.9%	1,195	1,325	-9.8%	1,479	1,240	19.3%	50,867	46,976	8.3%
Museum Park	344	317	8.6%	462	604	-23.6%	460	433	6.4%	11,446	11,951	-4.2%
Eleventh Street	316	289	9.6%	219	290	-24.4%	336	348	-3.4%	9,140	9,218	-0.8%
Park West	654	694	-5.7%	377	751	-49.8%	563	789	-28.6%	18,004	22,025	-18.3%
Freedom Tower												
Government Center	2,727	2,456	11.0%	1,858	1,771	4.9%	1,934	2,331	-17.0%	74,274	46,388	60.1%
Miami Avenue	392			289			362			7,654		
Third Street	518	260	99.6%	524	195	168.4%	508	243	108.8%	15,266	7,615	100.5%
Knight Center	537	575	-6.6%	295	355	-16.9%	293	321	-8.7%	14,033	15,242	-7.9%
Bayfront Park	2,192	2,032	7.9%	1,632	1,717	-5.0%	2,680	2,216	20.9%	65,224	61,700	5.7%
First Street	1,148			867			1,194			33,550		
College/Bayside	1,483	1,770	-16.2%	1,153	1,536	-24.9%	1,300	1,445	-10.0%	42,367	51,510	-17.7%
College North	1,038	972	6.8%	462	780	-40.7%	536	626	-14.4%	26,385	26,894	-1.9%
Wilkie D. Ferguson	1,460			926			932			39,388		
Riverwalk	872	491	77.6%	548	392	39.8%	572	342	67.2%	22,734	13,806	64.7%
Fifth Street	619	453	36.7%	416	389	6.8%	479	344	39.3%	16,690	12,946	28.9%
Eighth Street	1,995	1,537	29.8%	1,544	1,420	8.7%	1,577	1,296	21.7%	54,166	45,927	17.9%
Tenth Street	1,054	1,029	2.4%	756	862	-12.4%	831	824	0.9%	28,617	29,727	-3.7%
Brickell	2,291	2,031	12.8%	1,309	1,628	-19.6%	1,605	1,624	-1.2%	60,017	58,435	2.7%
Financial District	787	1,019	-22.8%	360	653	-44.9%	502	640	-21.7%	20,079	27,466	-26.9%
TOTAL	23,527	17,961	31.0%	15,959	14,946	6.8%	19,085	15,346	24.4%	644,639	498,566	29.3%

(1) Several Metromover stations were closed for construction both years, due to installation of new equipment and construction work.

METROMOVER CUMULATIVE PERCENTAGE RIDERSHIP SHARE



TOTAL MONTHLY AND AVERAGE WEEKDAY RIDERSHIP YEAR OVER YEAR COMPARISON CHARTS – METROMOVER

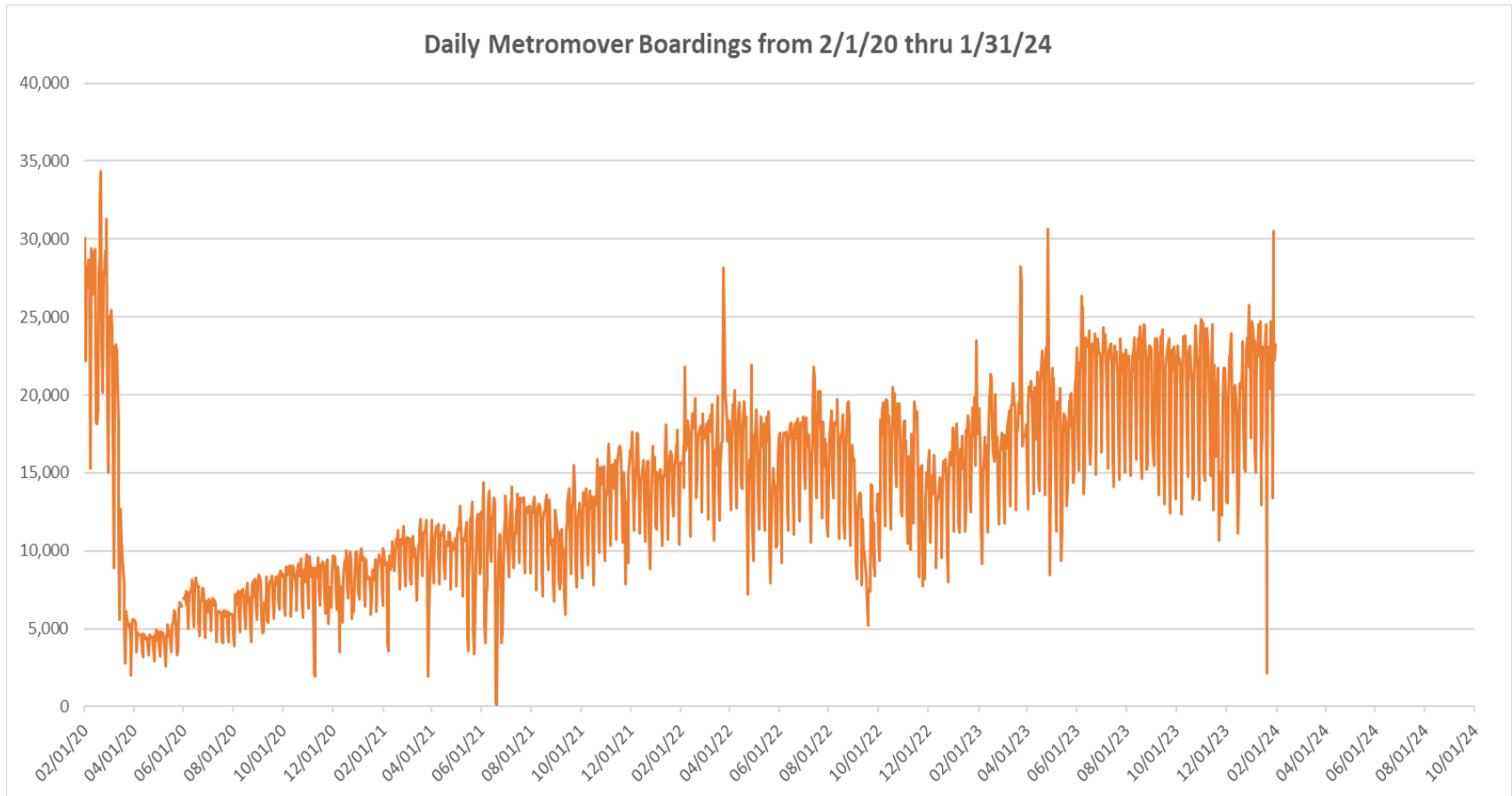


**“TOP 5 / BOTTOM 5” MOVER STATIONS AVERAGE WEEKDAY RIDERSHIP PERFORMANCE
YEAR OVER YEAR COMPARISONS**

Station	Jan-24	Jan-23	Absolute Delta (1)	Percent Delta
School Board	1,264	382	882	230.7%
Eighth Street	1,995	1,537	458	29.8%
Riverwalk	872	491	381	77.6%
Government Center	2,727	2,456	271	11.0%
Brickell	2,291	2,031	260	12.8%
College/Bayside	1,483	1,770	-286	-16.2%
Financial District	787	1,019	-232	-22.8%
Park West	654	694	-40	-5.7%
Knight Center	537	575	-38	-6.6%
Tenth Street	1,054	1,029	25	2.4%

(1) Averages rounded to the nearest boarding.

DAILY METROMOVER RIDERSHIP SINCE FEBRUARY 1, 2020



- (1) There was no Metrobus, Metrorail and Metromover service on 5/31/20, as a safety precaution, and no service for any of the four modes on 9/28/22 as a result of Hurricane Ian..
- (2) The dip at the start of the second week of December 2020 is due to Hurricane Eta; these are *raw data* from the UTA contractor APC system. Other more recent dips are due to various station closures (mostly on weekends) for system maintenance purposes.
- (3) Periodic (weekly) variations are prominent, since weekday ridership is almost always significantly higher than weekend or holiday ridership; a few low-count days are due to system outages, often associated with construction or renovation work.

Special Transportation Services



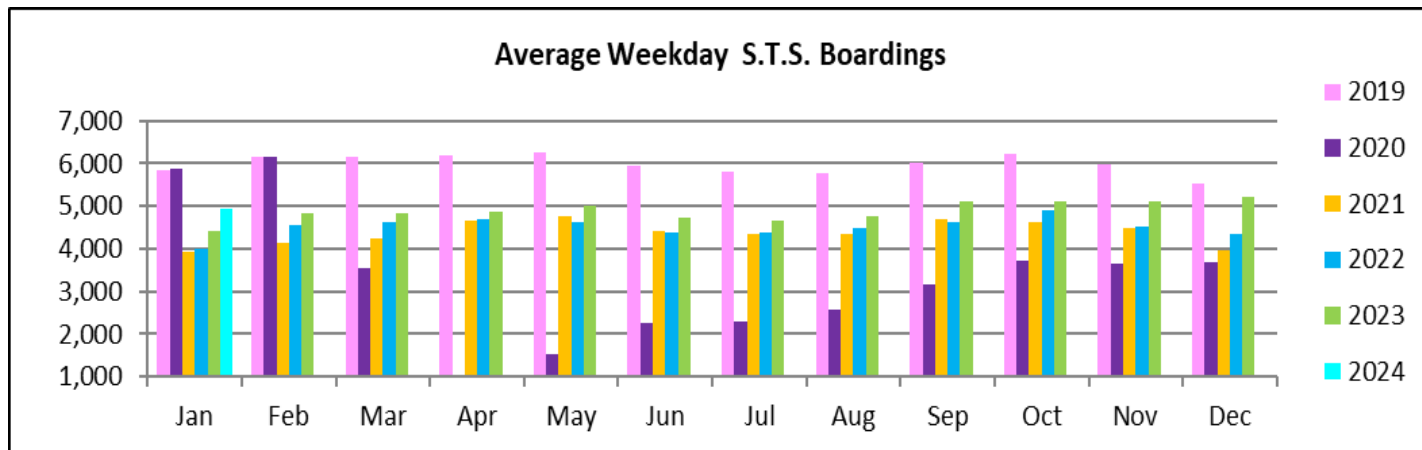
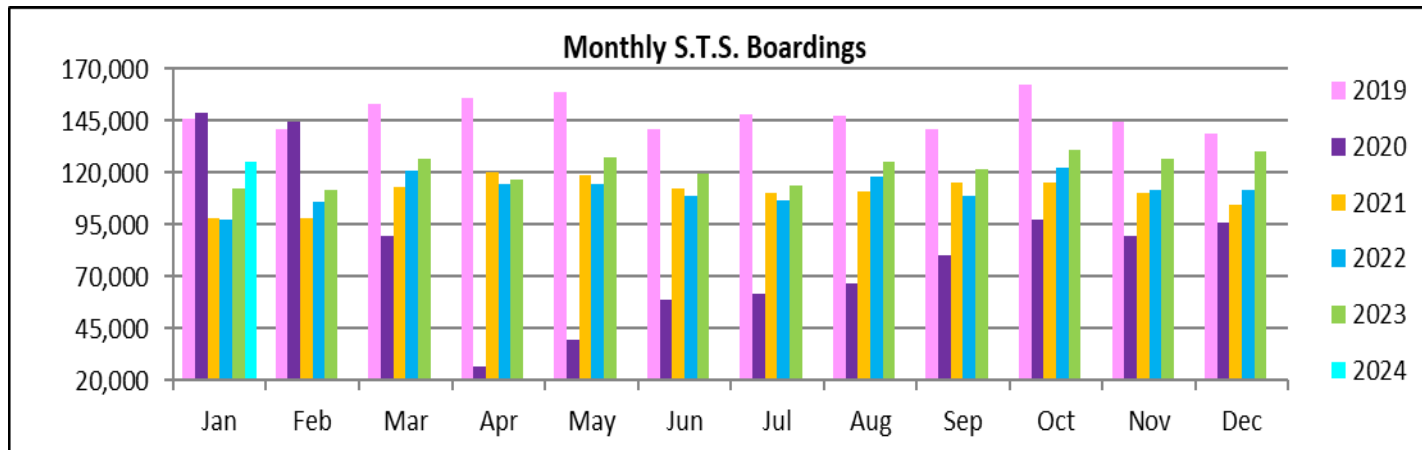
STS MONTHLY AND AVERAGE DAILY BOARDINGS

January 2024

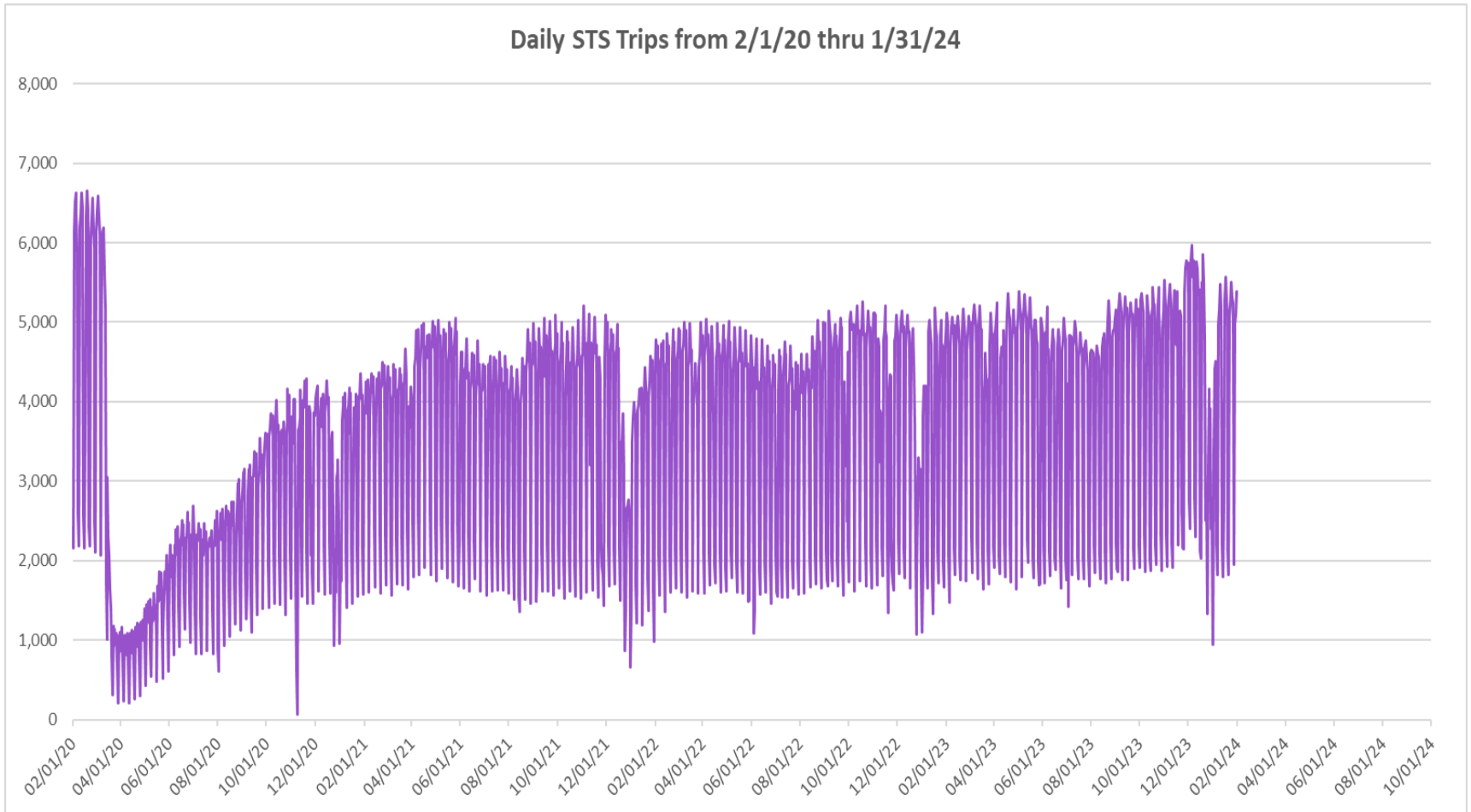
Measure	timeline	Ambulatory	Wheelchair	Total Clients (*)
Average Weekday	Jan-24	4,139	789	4,929
Average Saturday	Jan-24	1,834	349	2,183
Average Sunday	Jan-24	1,383	288	1,671
Total Monthly	Jan-24	105,308	20,205	125,513
Average Weekday	Jan-23	3,657	769	4,426
Average Saturday	Jan-23	1,618	331	1,948
Average Sunday	Jan-23	1,227	265	1,493
Total Monthly	Jan-23	93,066	19,566	112,632
Average Weekday	Jan-22	3,315	682	3,998
Average Saturday	Jan-22	1,211	283	1,494
Average Sunday	Jan-22	1,011	212	1,223
Total Monthly	Jan-22	80,732	16,809	97,541
% Change Current vs. January 2023 Weekday		13.2%	2.7%	11.3%
% Change Current vs. January 2023 Saturday		13.4%	5.6%	12.0%
% Change Current vs. January 2023 Sunday		12.7%	8.7%	12.0%
% Change Current vs. January 2023 Month Total		13.2%	3.3%	11.4%
% Change Current vs. January 2022 Weekday		24.8%	15.7%	23.3%
% Change Current vs. January 2022 Saturday		51.4%	23.1%	46.1%
% Change Current vs. January 2022 Sunday		36.8%	35.8%	36.6%
% Change Current vs. January 2022 Month Total		30.4%	20.2%	28.7%

(*) Trip count data provided by STS contractor.

TOTAL MONTHLY AND AVERAGE WEEKDAY RIDERSHIP YEAR OVER YEAR COMPARISON CHARTS – SPECIAL TRANSPORTATION SERVICES (S.T.S.)

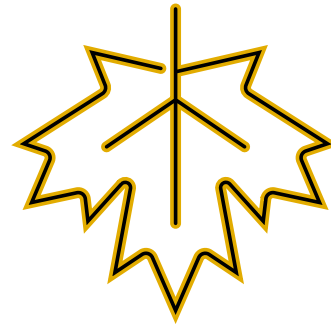
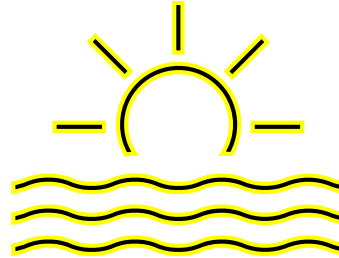
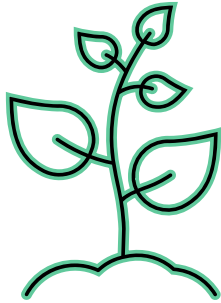


DAILY STS RIDERSHIP SINCE FEBRUARY 1, 2020

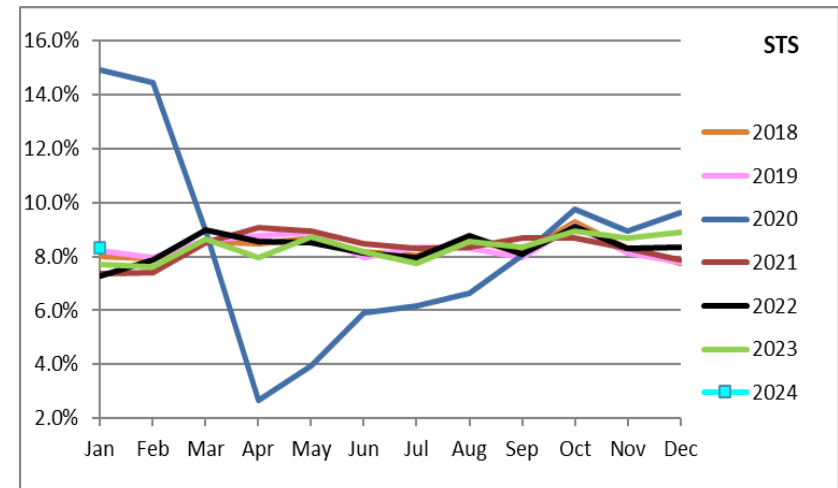
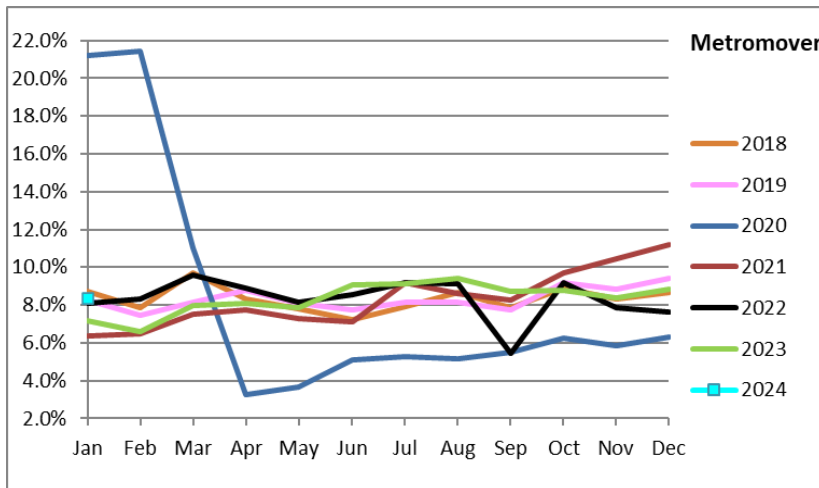
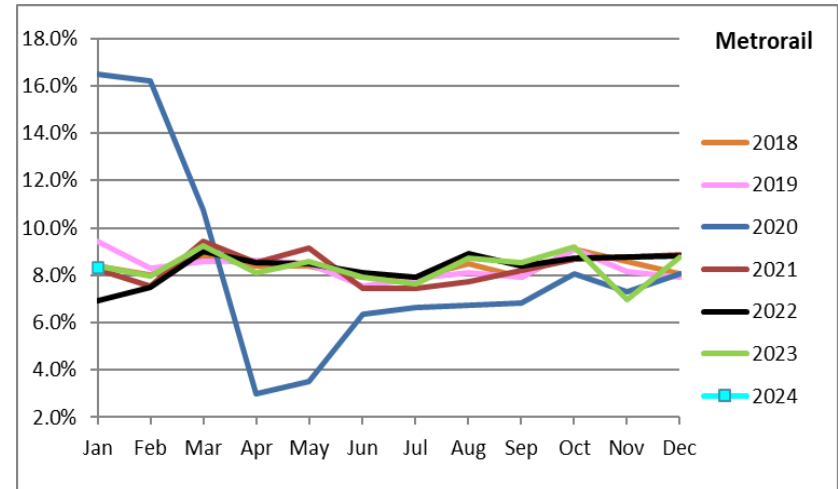
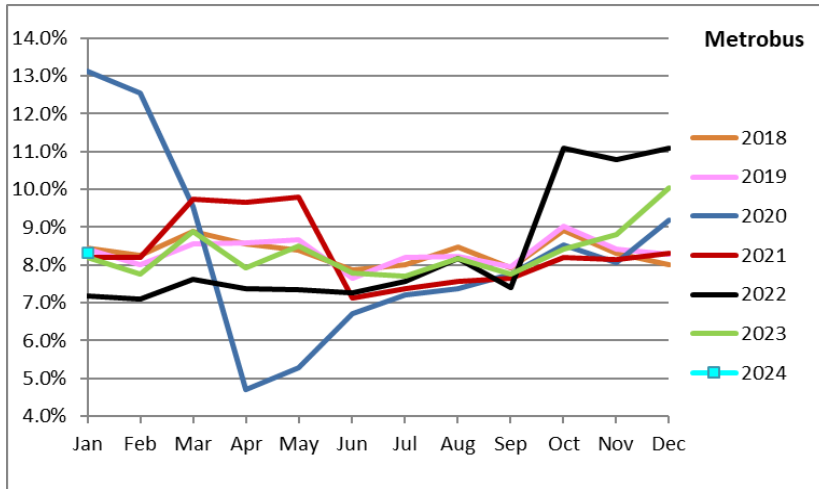


- (1) There was no service (for any of the four modes) on 9/28/22 as a result of Hurricane Ian.
- (2) The dip at the start of the second week of December 2020 is due to Hurricane Eta.
- (3) Periodic (weekly) variations are prominent, since weekday ridership is almost always significantly higher than weekend or holiday ridership.

Ridership Seasonality



RIDERSHIP SEASONALITY – PERCENT RIDERSHIP SHARE BY MONTH AND CALENDAR YEAR FOR EACH MODE



Note: the prominent dips seen in the fall of 2017 and beginning in the spring of 2020 are due to Hurricane Irma and the SARS-CoV-2 pandemic, respectively. Reductions in Bus and Rail ridership share seen beginning in June 2021 are due to reinstatement of fares as well changes in reporting tools and datasets, as discussed earlier in this report. The prominent peaks on Metrobus seen beginning October 2022 are due from a changeover from farebox counts to ridership obtained from new automatic passenger counter (APC) technology, while the pronounced rise beginning November 2023 can be attributed to the launch of the Better Bus Network and the attendant free fares.