



TRANSPORTATION AND PUBLIC WORKS

RIDERSHIP TECHNICAL REPORT

Division of Performance Analysis



Table of Contents

<i>Table of Contents</i>	2-3
All Modes Overview	4
Total Monthly Weekday, Saturday and Sunday Monthly Boardings By Mode	5
Average Weekday, Saturday and Sunday Boardings by Mode	6
Metrobus Total Monthly Ridership Comparisons by Fiscal Year	7
Metrorail Total Monthly Ridership Comparisons by Fiscal Year	8
Metromover Total Monthly Ridership Comparisons by Fiscal Year	9
STS Total Monthly Ridership Comparisons by Fiscal Year	10
All-Modes Combined Total Monthly Ridership Comparisons By Fiscal Year	11
All Modes Combined Total Monthly and Average Weekday Ridership – Year over Year Comparison Charts	12
Average Weekday Ridership – Modal Splits	13
Daily Ridership for All Modes Combined since 2/1/20	14
Metrobus	15
Better Bus Network (BBN, 11/13/2023 Lineup) Bus Route Changes, Pt 1 and Pt 2	16-17
Metrobus Average Weekday Boardings by Route	18-20
Metrobus Average Saturday Boardings by Route	21-22
Metrobus Average Sunday Boardings by Route	23-24
Metrobus Monthly Total Boardings by Route	25-27
Bus Ridership by Route Service Type Lineups Comparison	28-29
Bus Routes as Ranked by Percentage of Average Weekday Ridership	30
Metrobus Cumulative Percentage Average Weekday Ridership Share by Route (Top 75%)	31
Total Monthly and Average Weekday Bus Ridership – Year over Year Comparison Charts	32
Bus “Top 10 / Bottom 10” Bus Routes Average Weekday Ridership Performance – Month-over-Month Comparisons	33
Bus “Top 10 / Bottom 10” Bus Routes Sets Average Weekday Ridership Performance – Year-over-Year Comparisons	34
Bus “Top 10 / Bottom 10” Bus Routes Sets Average Weekday Ridership Performance – Month-over-4 Month Comparisons	35
Daily Metrobus Ridership since 2/1/20	36
Metrobus Parking Patronage Summary	37

Table of Contents (continued)

Metrorail	38
Metrorail Average Weekday Boardings by Station	39
Metrorail Average Saturday Boardings by Station	40
Metrorail Average Sunday Boardings by Station	41
Metrorail Total Monthly Boardings by Station	42
Metrorail Cumulative Percentage Average Weekday Ridership Share	43
Total Monthly and Average Weekday Rail Ridership – Year over Year Comparison Charts	44
“Top 5 / Bottom 5” Stations Average Weekday Ridership Performance	45
Daily Metrorail Ridership since 2/1/20	46
Metrorail Parking Patronage Summary	47
Metromover	48
Monthly and Average Daily Mover Boardings by Station	49
Metromover Cumulative Percentage Average Weekday Ridership Share	50
Total Monthly and Average Weekday Mover Ridership – Year over Year Comparison Charts	51
“Top 5 / Bottom 5” Stations Average Weekday Ridership Performance	52
Daily Metromover Ridership since 2/1/20	53
Special Transportation Services (STS)	54
STS Monthly and Average Daily Boardings	55
Total Monthly and Average Weekday STS Ridership – Year over Year Comparison Charts	56
Daily STS Ridership since 2/1/20	57
Ridership Seasonality	58
Ridership Seasonality – Percent Ridership Share by Month and Calendar Year for Each Mode	59

All Modes Overview



TOTAL MONTHLY WEEKDAY, SATURDAY AND SUNDAY BOARDINGS BY MODE
February 2024

TRAVEL MODE	MONTH'S TOTAL WEEKDAYS RIDERSHIP	MONTH'S TOTAL SATURDAYS RIDERSHIP	MONTH'S TOTAL SUNDAYS RIDERSHIP	TOTAL MONTHLY RIDERSHIP	% CHANGE vs Feb 2023 TOTAL MONTH RIDERSHIP
METROBUS (1)	4,183,072	531,764	338,829	5,053,665	11.7%
METRORAIL (2)	1,091,345	88,003	60,968	1,240,316	15.6%
METROMOVER	455,047	58,490	56,705	570,242	24.2%
STS PARATRANSIT (3)	108,798	9,513	7,421	125,732	12.5%
TOTAL	5,838,262	687,770	463,923	6,989,955	13.3%

- (1) Bus ridership reporting through automatic passenger counters coupled with a new enhanced sensor system resumed on October 1, 2022.
- (2) Metrorail fares resumed on June 1, 2021, following a 14-month period of fare-free rides as a result of the SARS-CoV-2 pandemic. The NextFare System faregate data replaced the video data as ridership data of record starting on that date, until free fares were reinstated for the Better Bus Network launch on 11/13/23. The NextFare System faregate data collection and reporting resumed on New Year's Day 2024.
- (3) Paratransit ridership data as reported by the contractor and subsequently audited by the Department.

AVERAGE WEEKDAY, SATURDAY AND SUNDAY BOARDINGS BY MODE
February 2024

Travel Mode	Average Weekday	Average Saturday	Average Sunday	% Change Feb 2023 Weekday	% Change Feb 2023 Saturday	% Change Feb 2023 Sunday
METROBUS	199,263	132,941	84,707	3.9%	17.0%	-0.6%
METRORAIL	52,755	22,001	15,242	7.1%	9.0%	0.0%
METROMOVER	23,272	16,078	15,256	18.0%	2.1%	12.1%
STS PARATRANSIT	5,181	2,378	1,855	7.3%	13.1%	9.2%
Totals (1)	280,470	173,398	117,060	5.6%	14.4%	1.1%

(*) Average ridership is calculated and published only for those days and stations or routes with nontrivial amounts of reported data.

METROBUS TOTAL MONTHLY RIDERSHIP COMPARISONS BY FISCAL YEAR

Bus Month	FY 19	FY 20	Variance 19 to 20	FY 21	FY 22	FY 23	FY 24	Variance 19 to 23	Variance 22 to 23	Variance 19 to 24	Variance 23 to 24
Oct	4,554,886	4,507,012	-1.1%	2,805,139	3,081,157	4,679,725	4,912,151	2.7%	51.9%	7.8%	5.0%
Nov	4,245,535	4,197,225	-1.1%	2,651,290	3,056,726	4,549,666	5,135,172	7.2%	48.8%	21.0%	12.9%
Dec	4,081,581	4,126,990	1.1%	3,022,530	3,123,883	4,677,460	5,857,057	14.6%	49.7%	43.5%	25.2%
Jan	4,195,911	4,316,998	2.9%	3,082,746	3,029,055	4,785,128	5,103,257	14.0%	58.0%	21.6%	6.6%
Feb	3,994,019	4,123,083	3.2%	3,076,966	2,995,789	4,526,317	5,053,665	13.3%	51.1%	26.5%	11.7%
Mar	4,266,768	3,136,162	-26.5%	3,660,639	3,218,562	5,183,872		21.5%	61.1%		
Apr	4,291,135	1,544,316	-64.0%	3,625,048	3,105,797	4,618,302		7.6%	48.7%		
May	4,330,922	1,734,609	-59.9%	3,683,343	3,097,574	4,953,197		14.4%	59.9%		
Jun	3,823,863	2,210,725	-42.2%	2,672,570	3,064,059	4,545,050		18.9%	48.3%		
Jul	4,094,906	2,366,749	-42.2%	2,769,907	3,189,994	4,484,458		9.5%	40.6%		
Aug	4,109,613	2,422,014	-41.1%	2,843,552	3,442,006	4,756,063		15.7%	38.2%		
Sep	3,971,220	2,546,923	-35.9%	2,877,110	3,123,572	4,525,426		14.0%	44.9%		
FY Total	49,960,359	37,232,806	-25.5%	36,770,840	37,528,174	56,284,664		12.7%	50.0%		

METRORAIL TOTAL MONTHLY RIDERSHIP COMPARISONS BY FISCAL YEAR

Rail Month	FY 19	FY 20	Variance 19 to 20	FY 21	FY 22	FY 23	FY 24	Variance 19 to 23	Variance 22 to 23	Variance 19 to 24	Variance 23 to 24
Oct	1,757,225	1,643,166	-6.5%	769,525	844,383	1,053,191	1,237,096	-40.1%	24.7%	-29.6%	17.5%
Nov	1,656,929	1,469,448	-11.3%	699,492	850,881	1,055,066	935,121	-36.3%	24.0%	-43.6%	-11.4%
Dec	1,553,804	1,433,928	-7.7%	769,194	860,436	1,063,096	1,177,272	-31.6%	23.6%	-24.2%	10.7%
Jan	1,708,695	1,576,340	-7.7%	799,119	832,924	1,127,340	1,233,350	-34.0%	35.3%	-27.8%	9.4%
Feb	1,501,458	1,549,118	3.2%	730,792	905,162	1,072,791	1,240,316	-28.6%	18.5%	-17.4%	15.6%
Mar	1,554,851	1,027,319	-33.9%	917,097	1,084,978	1,239,336		-20.3%	14.2%		
Apr	1,559,446	287,803	-81.5%	827,414	1,027,139	1,087,816		-30.2%	5.9%		
May	1,531,597	337,696	-78.0%	887,111	1,023,322	1,151,819		-24.8%	12.6%		
Jun	1,359,966	608,758	-55.2%	723,469	975,477	1,066,861		-21.6%	9.4%		
Jul	1,419,158	632,964	-55.4%	722,159	953,331	1,022,937		-27.9%	7.3%		
Aug	1,463,646	641,275	-56.2%	749,578	1,076,490	1,174,138		-19.8%	9.1%		
Sep	1,427,726	654,244	-54.2%	795,749	1,012,331	1,146,864		-19.7%	13.3%		
FY Total	18,494,501	11,862,059	-35.9%	9,390,699	11,446,854	13,261,255		-28.3%	15.9%		

METROMOVER TOTAL MONTHLY RIDERSHIP COMPARISONS BY FISCAL YEAR

Mover Month	FY 19	FY 20	Variance 19 to 20	FY 21	FY 22	FY 23	FY 24	Variance 19 to 23	Variance 22 to 23	Variance 19 to 24	Variance 23 to 24
Oct	790,533	831,234	5.1%	250,044	389,065	514,308	614,479	-34.9%	32.2%	-22.3%	19.5%
Nov	735,198	799,632	8.8%	232,422	418,929	439,150	584,887	-40.3%	4.8%	-20.4%	33.2%
Dec	767,239	849,832	10.8%	251,019	450,320	426,073	616,455	-44.5%	-5.4%	-19.7%	44.7%
Jan	746,728	847,773	13.5%	255,968	451,566	498,566	644,639	-33.2%	10.4%	-13.7%	29.3%
Feb	675,160	855,398	26.7%	260,332	465,968	459,264	570,242	-32.0%	-1.4%	-15.5%	24.2%
Mar	737,814	441,200	-40.2%	302,502	535,857	558,396		-24.3%	4.2%		
Apr	795,696	130,549	-83.6%	310,772	495,982	565,943		-28.9%	14.1%		
May	734,645	146,454	-80.1%	292,922	455,120	547,948		-25.4%	20.4%		
Jun	701,318	203,637	-71.0%	286,145	477,286	632,423		-9.8%	32.5%		
Jul	739,814	210,596	-71.5%	368,847	512,094	635,954		-14.0%	24.2%		
Aug	739,785	205,995	-72.2%	344,319	508,359	657,267		-11.2%	29.3%		
Sep	699,879	219,696	-68.6%	331,915	305,185	610,810		-12.7%	100.1%		
FY Total	8,863,809	5,741,996	-35.2%	3,487,207	5,465,731	6,546,102		-26.1%	19.8%		

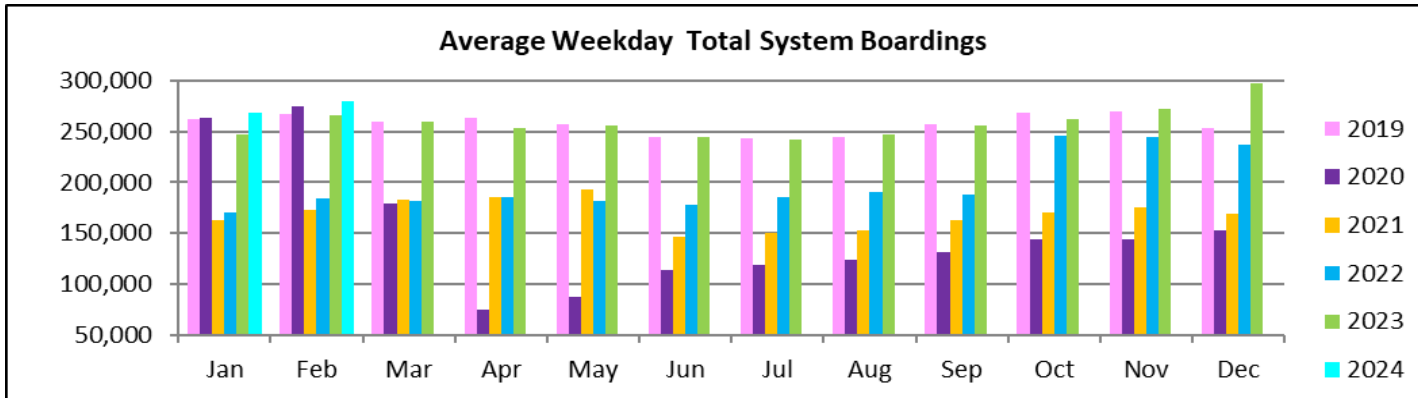
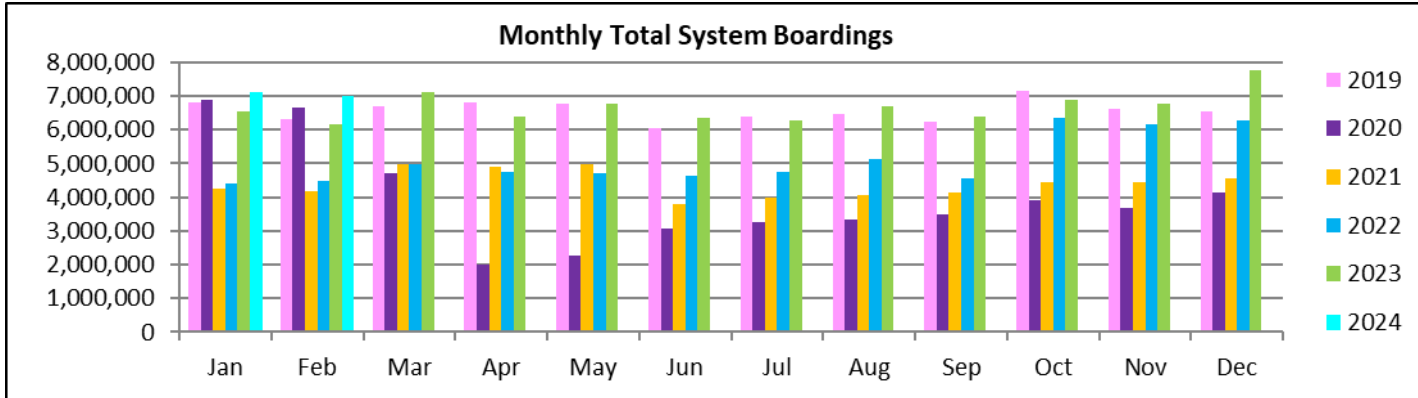
SPECIAL TRANSPORTATION SERVICES (STS) TOTAL MONTHLY RIDERSHIP COMPARISONS BY FISCAL YEAR

STS Month	FY 19	FY 20	Variance 19 to 20	FY 21	FY 22	FY 23	FY 24	Variance 19 to 23	Variance 22 to 23	Variance 19 to 24	Variance 23 to 24
Oct	162,564	162,704	0.1%	97,388	115,122	122,189	130,958	-24.8%	6.1%	-19.4%	7.2%
Nov	145,653	144,366	-0.9%	89,387	110,289	111,578	127,025	-23.4%	1.2%	-12.8%	13.8%
Dec	136,110	138,642	1.9%	96,366	104,496	112,019	130,093	-17.7%	7.2%	-4.4%	16.1%
Jan	146,268	149,114	1.9%	97,928	97,541	112,632	125,513	-23.0%	15.5%	-14.2%	11.4%
Feb	141,396	144,392	2.1%	98,285	105,706	111,748	125,732	-21.0%	5.7%	-11.1%	12.5%
Mar	153,191	89,634	-41.5%	112,930	120,718	126,819		-17.2%	5.1%		
Apr	155,808	26,877	-82.7%	120,122	114,912	116,882		-25.0%	1.7%		
May	158,665	39,654	-75.0%	118,636	114,505	127,782		-19.5%	11.6%		
Jun	141,320	59,093	-58.2%	112,397	109,054	119,527		-15.4%	9.6%		
Jul	148,232	61,765	-58.3%	110,059	107,188	113,623		-23.3%	6.0%		
Aug	147,331	66,563	-54.8%	110,766	117,941	125,510		-14.8%	6.4%		
Sep	141,387	80,346	-43.2%	115,406	108,788	122,065		-13.7%	12.2%		
FY Total	1,777,925	1,163,150	-34.6%	1,279,670	1,326,260	1,422,374		-20.0%	7.2%		

ALL-MODES COMBINED TOTAL MONTHLY RIDERSHIP COMPARISONS BY FISCAL YEAR

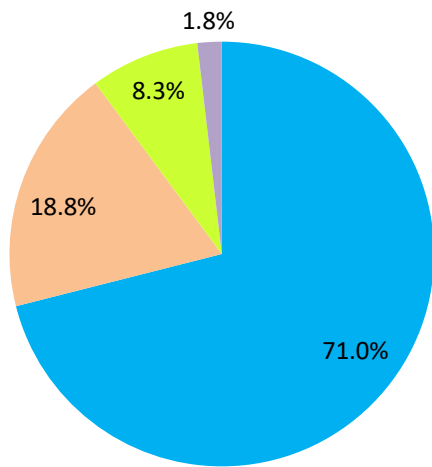
All Modes													
Month	FY 19	FY 20	FY 21	FY 22	FY 23	FY 24	19 TO 20	20 TO 21	21 TO 22	22 TO 23	19 TO 23	23 TO 24	19 TO 24
Oct	7,265,208	7,144,116	3,922,096	4,429,727	6,369,413	6,894,684	-1.7%	-45.1%	12.9%	43.8%	-12.3%	8.2%	-5.1%
Nov	6,783,315	6,610,671	3,672,591	4,436,825	6,155,460	6,782,205	-2.5%	-44.4%	20.8%	38.7%	-9.3%	10.2%	0.0%
Dec	6,538,734	6,549,392	4,139,109	4,539,135	6,278,648	7,780,877	0.2%	-36.8%	9.7%	38.3%	-4.0%	23.9%	19.0%
Jan	6,797,602	6,890,225	4,235,761	4,411,086	6,523,666	7,106,759	1.4%	-38.5%	4.1%	47.9%	-4.0%	8.9%	4.5%
Feb	6,312,033	6,671,991	4,166,375	4,472,625	6,170,120	6,989,955	5.7%	-37.6%	7.4%	38.0%	-2.2%	13.3%	10.7%
Mar	6,712,624	4,694,315	4,993,168	4,960,115	7,108,423		-30.1%	6.4%	-0.7%	43.3%	5.9%		
Apr	6,802,085	1,989,545	4,883,356	4,743,830	6,388,943		-70.8%	145.5%	-2.9%	34.7%	-6.1%		
May	6,755,829	2,258,413	4,982,012	4,690,521	6,780,746		-66.6%	120.6%	-5.9%	44.6%	0.4%		
Jun	6,026,467	3,082,213	3,794,581	4,625,876	6,363,861		-48.9%	23.1%	21.9%	37.6%	5.6%		
Jul	6,402,110	3,272,074	3,970,972	4,762,607	6,256,972		-48.9%	21.4%	19.9%	31.4%	-2.3%		
Aug	6,460,375	3,335,847	4,048,215	5,144,796	6,712,978		-48.4%	21.4%	27.1%	30.5%	3.9%		
Sep	6,240,212	3,501,209	4,120,180	4,549,876	6,405,165		-43.9%	17.7%	10.4%	40.8%	2.6%		
FY Total	79,096,594	56,000,011	50,928,416	55,767,019	77,514,395		-29.2%	-9.1%	9.5%	39.0%	-2.0%		

TOTAL MONTHLY AND AVERAGE WEEKDAY RIDERSHIP YEAR OVER YEAR COMPARISON CHARTS – ALL MODES COMBINED



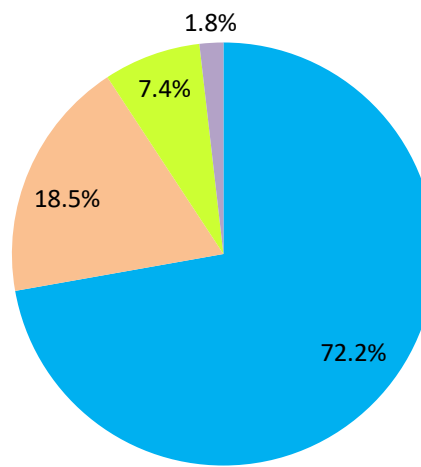
AVERAGE WEEKDAY RIDERSHIP - MODAL SPLITS

February 2024



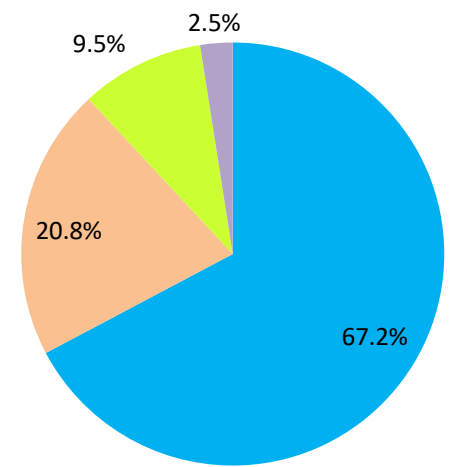
boardings

February 2023



boardings

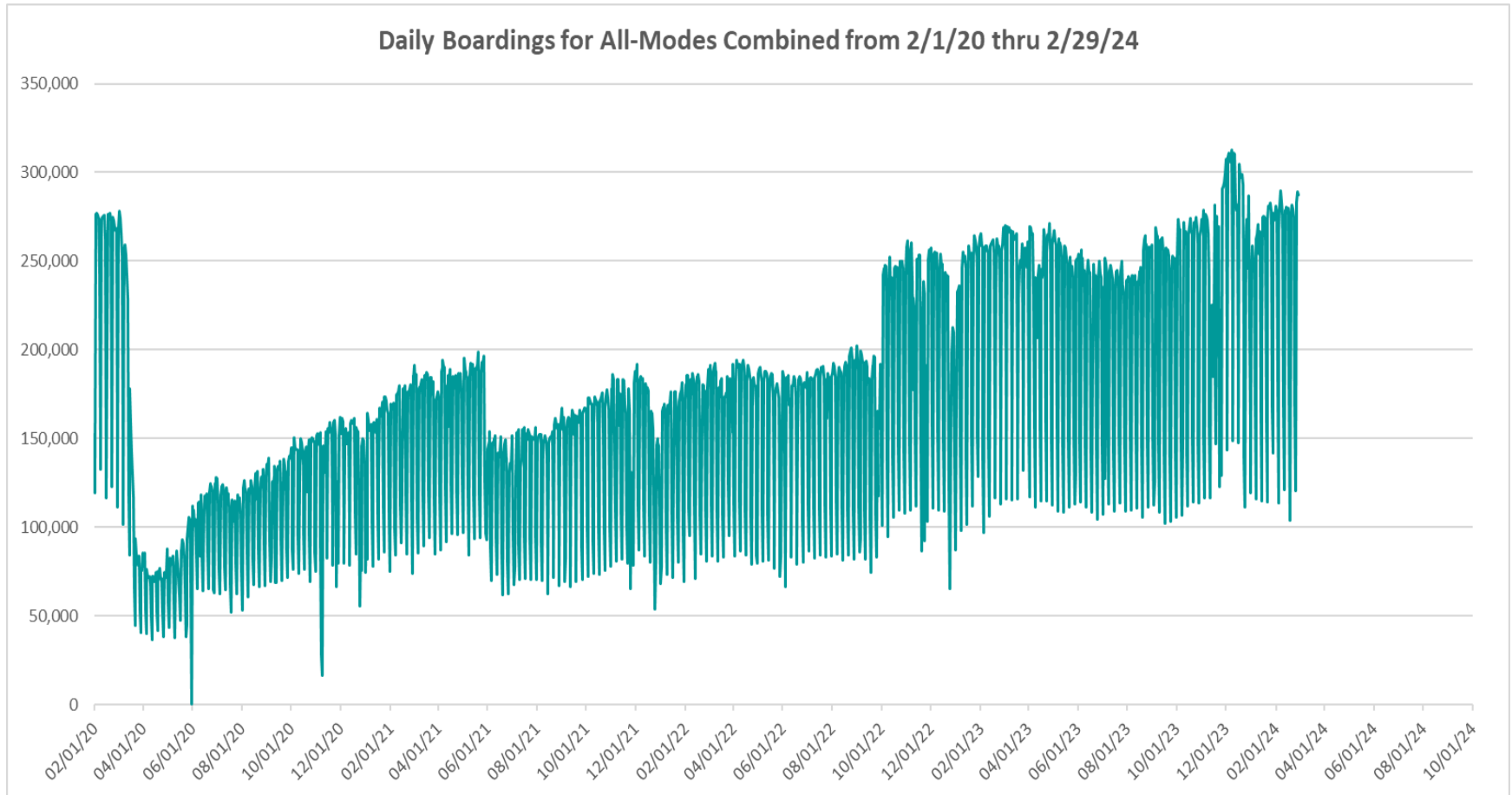
February 2022



boardings



DAILY RIDERSHIP FOR ALL MODES COMBINED SINCE FEBRUARY 1, 2020



- (1) There was no Metrobus, Metrorail and Metromover service on 5/31/20, as a safety precaution, and no service for any of the four modes on 9/28/22 as a result of Hurricane Ian..
- (2) The dip at the start of the second week of December 2020 is due to Hurricane Eta.
- (3) Daily variations from October 2022 onward are, for the Bus portion, estimated from reports made available by the Bus APC data vendor..
- (4) The reduction seen beginning 6/1/21 is partly due to the resumption of fares for bus and rail, and partly the result of having resumed reporting Cubic farebox data rather than bus APC counts, as well as Cubic rail faregate counts instead of video camera counts on that date. The jump seen at the start of December 2022 is due to the return to APC bus ridership counts reporting begun on 10/1/22.
- (5) The marked peak in Dec 2023 is attributable to the Better Bus Network launch period and attendant free fares.
- (6) Periodic (weekly) variations are prominent, since weekday ridership is almost always significantly higher than weekend or holiday ridership.

Metrobus



Better Bus Network (BBN, 11/13/2023 lineup) Bus Route Changes (Pt 1)

The listings below and on the following page are to serve as an aid in identifying individual routes for comparison of ridership data between periods prior to and following the launch of the BBN on 11/13/2023. In November 2023, both old and new route numbers appear in data tables, since the launch took place near mid-month; beginning with February 2024, only the current (BBN) numbering system appear in tables, to allow for direct comparisons.

BBN Numbering Changes:

Contracted **Route 1** was renumbered **Route 97**

Directly operated **Route 33** was renumbered **Route 103** (new, recycled number, not the same as former **Route 103 - C**)

Directly operated **Route 51** (Flagler MAX) was renumbered **Route 211** (recycled number, not the same as the OVERTOWN CIRCULATOR)

Contracted **Route 71** was renumbered **Route 107** (new, recycled number, not the same as **Route 107 - G** further below) and became directly operated

Directly operated **Route 79** was renumbered **Route 279** (79th Steet MAX)

Directly operated **Route 93** was renumbered **Route 203** (Biscayne MAX)

Directly operated **Route 99** was renumbered **Route 199**

Contracted **Route 101 - A** was renumbered **Route 15**

Directly operated **Route 102 - B** was renumbered **Route 26** (under the BBN's first phase, 07/24/2023 lineup)

Directly operated **Route 107 - G** (old, not the same as the **Route 107** appearing above) was renumbered **Route 125**

Directly operated **Route 112 - L** was renumbered **Route 79** (recycled number, not the same as the **Route 79** appearing above)

Directly operated **Route 120** was renumbered **Route 100**

Directly operated **Route 200** (CUTLER BAY LOCAL) was renumbered **Route 500** (recycled number, not the same as the **Route 500** further below)

Contracted **Route 210** was renumbered **Route 510** (SKYLAKE CIRCULATOR)

Contracted **Route 246** was renumbered **Route 401** (NORTH OWL)

Contracted **Route 248** (Princeton Circulator) was renumbered **Route 70** (recycled number, not the same as former **Route 70**)

Directly operated **Route 252** became contractor-operated, under the new name and number **Route 152**

Directly operated **Route 500** was renumbered **Route 400** (SOUTH OWL)

*The above routes, along with many others who retained their numbering, underwent modifications in various ways (realignment, new headways, days of operation, etc., some major), as part of the BBN design and its resulting lineup. Details for each DTPW Bus route are provided in the Miami-Dade County website. (Directly operated **Route 2** became contractor-operated but kept its number).*

Better Bus Network (BBN, 11/13/2023 lineup) Bus Route Changes (Pt 2)

BBN New Routes and Numbers:

Two new routes with new numbering were created to support the Better Bus Network:

Route 14 corresponds to a newly created route

Route 20 corresponds to a newly created route

BBN Eliminated Routes:

The following routes were discontinued, as part of the Better Bus Network realignments:

- Route 10
- Route 16
- Route 19
- Route 29
- Route 31 (BUSWAY LOCAL)
- Route 42
- Route 46 (LIBERTY CITY CONNECTION)
- Route 57
- Route 82 (WESTCHESTER CIRCULATOR)
- Route 103 - C (old, previously used numbering, not the same as the Route 103 in the list on the previous page)
- Route 211 (OVERTOWN CIRCULATOR, previously used numbering, not the same as the Route 211 in the list on the previous page)
- Route 105 - E
- Route 108 - H
- Route 110 - J
- Route 113 - M
- Route 115
- Route 119 - S
- Route 155 (BISCAYNE GARDENS CIRCULATOR)
- Route 202 (LITTLE HAITI CONNECTION)
- Route 212 (SWEETWATER CIRCULATOR)
- Route 217 (BUNCHE PARK CIRCULATOR)
- Route 238 (EAST-WEST CONNECTION)
- Route 241 (TUTTLE LIMITED)
- Route 254 (BROWNSVILLE CIRCULATOR)
- Route 267 (LUDLAM LIMITED)
- Route 277 (7th AVENUE MAX)
- Route 286 (NORTH POINTE CIRCULATOR)
- Route 297 (27th AVENUE ORANGE MAX)

Previously Eliminated Routes:

The following five express routes were suspended soon after the start of the SARS-CoV-2 pandemic, and never reinstated; their ridership appears in some of the tables in this report, as then-components of the reported bus system performance measures:

- Route 175 (NW MIAMI-DADE EXPRESS)
- Route 195 EXPRESS – BROWARD BLVD
- Route 196 EXPRESS – BROWARD BLVD-CIVIC CENTER
- Route 295 EXPRESS – SHERIDAN STREET
- Route 296 EXPRESS – SHERIDAN STREET-CIVIC CENTER

The preceding listings are not exhaustive, and the reader is referred to the Miami-Dade County website for further BBN details or additional changes.

METROBUS AVERAGE WEEKDAY BOARDINGS BY ROUTE (†, ††)

Route	Average Weekday	Average Weekday	Percent Change	Average Weekday	Percent Change	Average Weekday	Percent Change	Average Weekday	Percent Change
	weekdays Feb-24	Jan-24	MOM	Oct-23	MO4M	Feb-23	YOY	Feb-20	Current vs Feb-20
2	2,018	1,707	18.2%	2,977	-32.2%	2,858	-29.4%	3,102	-35.0%
3	8,981	8,307	8.1%	5,416	65.8%	5,253	71.0%	5,137	74.8%
7	4,248	4,045	5.0%	4,021	5.7%	4,115	3.2%	3,501	21.3%
8	4,979	4,767	4.4%	4,650	7.1%	5,076	-1.9%	3,909	27.4%
9	11,460	10,629	7.8%	6,490	76.6%	6,326	81.2%	5,528	107.3%
10				2,443		2,436		2,482	
11	11,491	10,972	4.7%	9,621	19.4%	9,152	25.6%	7,292	57.6%
12	2,977	2,846	4.6%	2,891	3.0%	3,155	-5.7%	2,779	7.1%
14	975	941	3.7%						
15	425	392	8.4%	178	139.2%	250	69.6%	177	140.1%
16				2,009		2,014		1,862	
17	7,233	6,506	11.2%	4,133	75.0%	4,086	77.0%	3,878	86.5%
19				1,807		1,697		1,542	
20	3,861	3,709	4.1%						
21	2,007	1,938	3.6%	2,107	-4.7%	1,844	8.8%	1,817	10.5%
22	2,617	2,572	1.8%	4,502	-41.9%	4,579	-42.8%	3,640	-28.1%
24-CORAL WAY LIMITED	2,544	2,521	0.9%	2,195	15.9%	2,374	7.2%	1,340	89.9%
26	2,556	2,363	8.2%	1,877	36.1%	2,319	10.2%	1,778	43.7%
27	9,634	9,220	4.5%	7,110	35.5%	7,601	26.8%	6,972	38.2%
29				516		504		534	
31-BUSWAY LOCAL						1,213		1,089	
32	1,962	1,894	3.6%	2,699	-27.3%	2,789	-29.7%	2,390	-17.9%
34 TRANSITWAY EXPRESS	1,850	1,745	6.0%	1,636	13.1%	1,575	17.5%	2,008	-7.9%
35	2,435	2,219	9.8%	3,070	-20.7%	2,869	-15.1%	2,421	0.6%
36	6,222	6,117	1.7%	2,645	135.2%	2,876	116.4%	2,536	145.4%
37	4,728	4,707	0.4%	3,475	36.0%	3,885	21.7%	3,273	44.4%
38 TRANSITWAY MAX	7,402	7,102	4.2%	5,714	29.5%	5,809	27.4%	6,361	16.4%
39 TRANSITWAY EXPRESS	869	810	7.2%	742	17.0%			893	-2.7%
40	1,989	1,929	3.1%	2,344	-15.2%	2,445	-18.7%	1,772	12.2%
42				1,001		1,185		820	
46 - LIBERTY CITY CONN.				22		23		41	
52	1,706	1,650	3.4%	1,390	22.7%	1,457	17.1%	1,261	35.3%
54	2,961	2,882	2.7%	3,086	-4.0%	3,422	-13.5%	2,940	0.7%
56	609	572	6.5%	391	55.8%	403	51.2%	354	72.2%
57				522		534		433	
62	2,753	2,578	6.8%	2,496	10.3%	1,953	41.0%	1,815	51.7%
70	315	289	9.1%	161	95.7%	153	105.8%	135	134.5%

(†) In this table and those which follow, "YOY" stands for "year-over-year", "MOM" for "month-over-month" and, e.g., "YO4Y" for "year over four years", i.e., current month vs 12 months prior, one month prior, and 48 months prior, respectively. The February 2020 numbers serve as a pre-pandemic benchmark.

METROBUS AVERAGE WEEKDAY BOARDINGS BY ROUTE

Route	Average Weekday	Average Weekday	Percent Change	Average Weekday	Percent Change	Average Weekday	Percent Change	Average Weekday	Percent Change
	weekdays Feb-24	Jan-24	MOM	Oct-23	MO4M	Feb-23	YOY	Feb-20	Current vs Feb-20
72	946	930	1.7%	670	41.3%	781	21.2%	781	21.1%
73	1,464	1,518	-3.5%	2,868	-48.9%	3,337	-56.1%	2,124	-31.1%
75	2,986	2,922	2.2%	1,594	87.4%	1,447	106.3%	1,429	109.0%
77	12,375	11,487	7.7%	9,959	24.3%	9,332	32.6%	7,129	73.6%
79	8,584	8,454	1.5%	8,481	1.2%	9,303	-7.7%	7,636	12.4%
82 - WESTCHESTER CIRC				61		61		62	
87	2,438	2,331	4.6%	1,924	26.8%	2,177	12.0%	1,499	62.6%
88	2,041	1,991	2.5%	2,419	-15.6%	2,578	-20.8%	2,076	-1.7%
95-EXPRESS GOLDEN GLADES	1,317	1,257	4.8%	1,195	10.2%	1,096	20.2%	1,690	-22.0%
97	185	173	7.2%	225	-17.5%	203	-8.9%	184	0.7%
100	15,894	16,041	-0.9%	6,128	159.4%	7,433	113.8%	6,667	138.4%
103 - C								463	
103	2,270	2,182	4.1%	1,967	15.4%	2,073	9.5%	1,687	34.6%
104	1,247	1,188	5.0%	1,024	21.8%	997	25.1%	837	49.0%
105 - E				1,402		1,540		1,287	
107	2,263	2,227	1.6%	825	174.2%	763	196.7%	711	218.5%
108 - H				487		592		473	
110 - J				2,955		3,291		2,508	
113 - M				887		605		866	
115				151		150		180	
119 - S				9,588		10,414		8,970	
125	4,669	4,370	6.8%	2,099	122.4%	2,122	120.0%	1,713	172.5%
132 -TRI-RAIL DORAL SHUTTLE	49	51	-4.1%	37	33.3%	41	18.4%	16	212.3%
135	2,159	1,938	11.4%	1,755	23.0%	1,684	28.2%	1,399	54.3%
136	178	159	12.3%	162	10.4%	146	22.1%	126	41.4%
137-WEST DADE CONNECTION	2,504	2,506	-0.1%	2,119	18.1%	2,355	6.3%	1,626	54.0%
150-MIAMI BEACH AIRPORT EXPRESS	1,549	1,535	0.9%	2,149	-27.9%	2,372	-34.7%	1,867	-17.0%
152	402	398	1.0%	1,051	-61.8%	1,133	-64.5%	851	-52.8%
155 - BISCAYNE GARDENS CIRC				45		43		44	
175 - NW MIAMI-DADE EXPRESS								33	
183	5,325	4,994	6.6%	3,653	45.8%	3,679	44.7%	3,149	69.1%
195 EXPRESS - BROWARD BLVD								372	
196 EXPRESS - SHERIDAN ST								383	
199	1,959	1,968	-0.5%	1,899	3.1%	1,712	14.4%	1,473	33.0%
202 - LITTLE HAITI CONN				110		76		140	
203 - BISCAYNE MAX	1,649	1,371	20.3%	3,666	-55.0%	3,782	-56.4%	3,334	-50.5%

METROBUS AVERAGE WEEKDAY BOARDINGS BY ROUTE

Route	Average Weekday	Average Weekday	Percent Change	Average Weekday	Percent Change	Average Weekday	Percent Change	Average Weekday	Percent Change
	weekdays Feb-24	Jan-24	MOM	Oct-23	MO4M	Feb-23	YOY	Feb-20	Current vs Feb-20
204 KILLIAN MAX	667	616	8.2%	620	7.6%	752	-11.3%	1,071	-37.7%
207 (7th St)-LITTLE HAVANA CONN	1,823	1,783	2.3%	1,819	0.2%	1,869	-2.5%	1,489	22.4%
208 (8th St)-LITTLE HAVANA CONN	1,792	1,668	7.4%	1,659	8.0%	1,783	0.5%	1,308	37.0%
211 OVERTOWN CIRCULATOR				71		87		58	
211 - FLAGLER MAX	1,985	1,791	10.8%	3,824	-48.1%	4,226	-53.0%	3,109	-36.2%
212-SWEETWATER CIRC				22		27		15	
217 - BUNCHE PARK CIRC				80		61		97	
238-EAST/WEST CONN				593		639		449	
241 TUTTLE LIMITED				348		302			
254-BROWNSVILLE CIRC				5		6		19	
267-LUDLAM LIMITED				162		176		149	
272 SUNSET MAX (*)	374	372	0.7%	428	-12.6%	402	-6.8%	550	-32.0%
277-7TH AVENUE MAX				879		828		683	
279 - 79 STREET MAX	717	718	0.0%	469	53.0%	634	13.2%	361	98.5%
286-NORTH POINTE CIRC				93		91		97	
287-SAGA BAY MAX	404	387	4.5%	341	18.6%	387	4.4%	358	12.9%
288 KENDALL MAX	531	483	10.0%	372	42.7%	491	8.1%	762	-30.4%
295								233	
296								215	
297-27th AVENUE ORANGE MAX				1,229		1,318		1,356	
301-DADE MONROE EXPRESS	1,047	1,018	2.8%	955	9.6%	886	18.1%	841	24.4%
302-CARD SOUND EXPRESS	106	106	0.2%	91	17.3%	126	-15.9%	86	23.2%
338 - WEEKEND EXPRESS									
344	118	124	-4.7%	76	55.8%	73	60.9%	96	22.9%
400 - SOUTH OWL	82	87	-5.5%	71	15.6%	79	3.9%	81	1.1%
401 - NORTH OWL	65	48	36.0%	61	6.7%	56	15.8%	94	-30.8%
500 - CUTLER BAY LOCAL	289	249	16.0%	176	64.4%	130	122.4%	158	83.3%
510 - SKYLAKE CIRCULATOR (*)	377	400	-5.6%	471	-19.9%	311	21.5%	282	33.9%
836 EXPRESS	335	324	3.7%	247	35.9%	257	30.4%		
837 EXPRESS	203	201	1.1%	195	4.6%	116	74.9%		
AHEPA SHUTTLE	17	19	-12.6%	18	-6.5%	16	2.2%	21	-20.0%
FEDERATION GARDENS SHUTTLE									
GREEN HILLS SHUTTLE	8	8	6.5%	5	58.7%	4	106.3%	9	-8.3%
KINGS CREEK SHUTTLE	9	10	-7.7%	14	-34.5%	19	-52.6%	13	-30.8%
ROBERT SHARP SHUTTLE	28	20	39.9%	23	22.8%	23	25.6%	10	197.4%
SIERRA LAKES SHUTTLE	25	23	9.9%	16	61.3%	16	58.7%	45	-44.4%
Total	199,263	190,370	4.7%	185,320	7.5%	191,740	3.9%	167,711	18.8%

(*) To see which routes fully or partly operated under contract this month, please refer to the ranking table in Slide 30.

(1) Includes shuttles and those routes which were not run some years.

(2) Several express routes were suspended beginning at the end of March 2020, due to the SARS-CoV-2 pandemic, while other routes had alignment and schedule modifications made to them, in an ongoing effort to optimize service delivery.

METROBUS AVERAGE SATURDAY BOARDINGS BY ROUTE

Route	Average Saturday	Average Saturday	Percent Change	Average Saturday	Percent Change	Average Saturday	Percent Change	Average Saturday	Percent Change
	Feb-24	Jan-24	MOM	Oct-23	MO4MY	Feb-23	YOY	Feb-20	Current vs Feb-20
Saturdays									
2	969	870	11.4%	1,605	-39.6%	1,690	-42.6%	1,616	-40.0%
3	6,771	6,764	0.1%	5,754	17.7%	5,821	16.3%	5,229	29.5%
7	2,641	2,360	11.9%	1,972	33.9%	2,173	21.5%	1,887	39.9%
8	2,777	2,612	6.3%	2,334	19.0%	2,780	-0.1%	2,027	37.0%
9	7,483	6,954	7.6%	3,677	103.5%	3,403	119.9%	3,034	146.6%
10				2,107		1,896		1,896	
11	9,703	8,168	18.8%	5,787	67.7%	6,838	41.9%	5,182	87.2%
14	858	848	1.1%						
15	348	398	-12.4%	93	273.5%	72	383.7%	71	391.9%
16				1,662		1,748		1,566	
17	4,692	4,424	6.1%	2,553	83.8%	2,476	89.5%	2,363	98.6%
20	3,165	2,886	9.7%						
22	1,748	1,645	6.3%	2,425	-27.9%	2,415	-27.6%	2,084	-16.1%
24-CORAL WAY LIMITED	2,017	1,733	16.4%	1,400	44.0%	1,608	25.5%	1,165	73.1%
26	1,357	1,257	7.9%	966	40.5%	1,256	8.0%	851	59.5%
27	6,768	5,872	15.3%	4,006	69.0%	4,444	52.3%	4,034	67.8%
31-BUSWAY LOCAL				0		913		896	
32	1,222	1,090	12.1%	1,261	-3.1%	1,247	-2.0%	1,029	18.8%
35	1,742	1,666	4.5%	1,540	13.1%	1,608	8.3%	1,372	27.0%
36	4,904	4,635	5.8%	1,677	192.4%	1,711	186.5%	1,289	280.3%
37	3,237	2,947	9.9%	2,062	57.0%	2,312	40.0%	2,090	54.8%
38 TRANSITWAY MAX	6,217	6,474	-4.0%	6,328	-1.8%	4,939	25.9%	4,715	31.8%
40	1,054	1,092	-3.5%	926	13.8%	918	14.8%	655	61.1%
42				617		637		552	
52	1,125	1,087	3.5%	694	62.2%	706	59.5%	686	64.0%
54	2,000	1,736	15.2%	1,925	3.9%	2,080	-3.9%	1,727	15.8%
56	230	201	14.3%						
62	1,954	1,879	4.0%	1,823	7.2%	1,393	40.3%	1,343	45.5%
70	172	186	-7.4%						
72	522	521	0.1%	357	46.4%	400	30.7%	350	49.3%
73	627	651	-3.7%	1,202	-47.8%	1,411	-55.5%	860	-27.1%
75	1,877	1,831	2.5%	550	241.3%	516	264.0%	468	301.1%
77	7,588	7,175	5.8%	5,510	37.7%	5,717	32.7%	4,197	80.8%
79	7,280	7,153	1.8%	7,094	2.6%	7,513	-3.1%	5,667	28.5%
82 - WESTCHESTER CIRC				38		38		50	

METROBUS AVERAGE SATURDAY BOARDINGS BY ROUTE

Route	Average Saturday	Average Saturday	Percent Change	Average Saturday	Percent Change	Average Saturday	Percent Change	Average Saturday	Percent Change
	Feb-24	Jan-24	MOM	Oct-23	MO4M	Feb-23	YOY	Feb-20	Current vs Feb-20
Saturdays									
87	991	1,017	-2.6%	532	86.5%	678	46.2%	402	146.3%
88	1,580	1,534	3.0%	1,661	-4.9%	1,883	-16.1%	1,620	-2.5%
97	184	175	5.0%	163	12.6%	176	4.4%	215	-14.5%
100	14,680	13,473	9.0%	5,637	160.4%	6,553	124.0%	4,744	209.4%
103 - C						0		315	
103	1,395	1,350	3.4%	1,239	12.6%	1,168	19.5%	951	46.8%
104	817	816	0.1%	445	83.7%	543	50.3%	468	74.4%
105 - E				772		831		619	
107	1,402	1,291	8.6%	238	490.3%	263	433.1%	252	456.8%
108 - H				401		463		372	
110 - J				1,394		2,269		1,952	
113 - M				577		465		503	
115				80		82		82	
119 - S				8,118		9,092		6,861	
125	2,792	2,906	-3.9%	1,297	115.3%	1,379	102.4%	1,066	161.8%
135	972	896	8.5%	556	74.9%	533	82.3%	539	80.4%
137-WEST DADE CONNECTION	1,658	1,616	2.6%	1,337	24.1%	1,485	11.7%	1,027	61.5%
150-MIAMI BEACH AIRPORT EXPRESS	1,536	1,454	5.7%	2,161	-28.9%	2,341	-34.4%	1,604	-4.2%
152	243	246	-1.3%	375	-35.2%	420	-42.1%	302	-19.5%
183	3,189	3,174	0.5%	1,960	62.7%	2,133	49.5%	1,790	78.2%
199	1,364	1,268	7.6%	1,106	23.3%	1,071	27.3%	849	60.7%
202 - LITTLE HAITI CONN				22		29		50	
207 (7th St)-LITTLE HAVANA CONN	999	806	23.9%	929	7.6%	1,107	-9.7%	1,032	-3.3%
208 (8th St)-LITTLE HAVANA CONN	1,013	967	4.7%	1,030	-1.7%	1,299	-22.0%	1,044	-3.1%
241 TUTTLE LIMITED				222		220			
286-NORTH POINTE CIRC				61		63		41	
301-DADE MONROE EXPRESS	967	968	-0.1%	885	9.2%	815	18.7%	801	20.7%
302-CARD SOUND EXPRESS	102	85	20.1%	94	8.0%	96	6.3%	57	79.3%
338 - WEEKEND EXPRESS	165	175	-5.3%	259	-36.3%	256	-35.4%	237	-30.2%
344	68	73	-7.2%						
400 - SOUTH OWL	87	120	-27.4%	104	-16.4%	77	12.7%	70	23.9%
401 - NORTH OWL	76	48	58.9%	61	24.8%	44	71.6%	84	-10.5%
500 - CUTLER BAY LOCAL	257	242	6.1%	152	69.2%	117	120.4%	119	115.4%
510 - SKYLAKE CIRCULATOR (*)	287	223	28.4%	217	32.0%	97	194.9%	165	73.8%
12/21 WEEKEND INTERLINE	3,050	2,786	9.4%	3,290	-7.3%	2,850	7.0%	2,528	20.6%
FEDERATION GARDENS SHUTTLE	25	19	28.9%	20	22.5%	20	22.5%	28	-13.7%
Total	132,941	124,838	6.5%	107,331	23.9%	113,588	17.0%	93,742	41.8%

METROBUS AVERAGE SUNDAY BOARDINGS BY ROUTE

Route	Average Sunday	Average Sunday	Percent Change	Average Sunday	Percent Change	Average Sunday	Percent Change	Average Sunday	Percent Change
	Feb-24	Jan-24	MOM	Oct-23	MO4M	Feb-23	YOY	Feb-20	Current vs Feb-20
Sundays									
2	792	620	27.8%	1,214	-34.8%	1,136	-30.3%	1,335	-40.6%
3	4,659	4,651	0.2%	4,408	5.7%	5,003	-6.9%	4,353	7.0%
7	1,691	1,594	6.1%	1,632	3.6%	1,565	8.0%	1,654	2.2%
8	1,597	1,575	1.4%	1,838	-13.1%	1,963	-18.6%	1,746	-8.5%
9	4,265	4,227	0.9%	2,756	54.7%	2,978	43.2%	2,549	67.3%
10				1,632		1,657		1,441	
11	5,501	5,231	5.2%	3,803	44.6%	4,394	25.2%	3,917	40.4%
14	920	824	11.7%						
15	280	319	-12.1%	53	428.8%	40	600.6%	56	405.0%
16				1,023		1,100		997	
17	2,706	2,601	4.0%	1,920	40.9%	1,845	46.7%	1,833	47.6%
20	2,069	2,030	1.9%						
22	1,148	1,029	11.6%	1,915	-40.1%	1,929	-40.5%	1,548	-25.9%
24-CORAL WAY LIMITED	1,171	1,080	8.4%	1,108	5.7%	1,187	-1.4%	905	29.4%
26	890	844	5.4%	871	2.2%	953	-6.7%	717	24.2%
27	3,532	3,550	-0.5%	3,146	12.3%	3,168	11.5%	2,918	21.0%
31-BUSWAY LOCAL				0		774		715	
32	812	822	-1.2%	768	5.7%	816	-0.4%	772	5.2%
35	1,194	1,213	-1.6%	1,175	1.6%	1,114	7.2%	942	26.8%
36	3,166	3,224	-1.8%	1,160	172.8%	1,203	163.1%	1,111	185.1%
37	2,157	1,971	9.5%	1,755	22.9%	1,897	13.7%	1,739	24.1%
38 TRANSITWAY MAX	4,739	4,317	9.8%	4,957	-4.4%	4,895	-3.2%	4,147	14.3%
40	675	700	-3.6%	542	24.4%	550	22.6%	447	50.9%
42				425		427		416	
52	811	798	1.6%	496	63.3%	512	58.3%	466	73.9%
54	1,112	1,131	-1.7%	1,181	-5.8%	1,254	-11.3%	1,171	-5.0%
62	1,162	1,129	2.9%	1,040	11.7%	885	31.3%	891	30.5%
70	143	143	0.0%						
72	399	364	9.4%	259	53.7%	398	0.1%	265	50.7%
73	219	243	-9.7%	602	-63.6%	776	-71.8%	495	-55.7%
75	1,253	1,286	-2.6%	352	256.3%	322	288.6%	271	362.7%
77	4,275	4,525	-5.5%	3,980	7.4%	3,589	19.1%	2,815	51.9%
79	5,094	5,154	-1.2%	4,837	5.3%	5,320	-4.2%	4,804	6.0%

METROBUS AVERAGE SUNDAY BOARDINGS BY ROUTE

Route	Average Sunday	Average Sunday	Percent Change	Average Sunday	Percent Change	Average Sunday	Percent Change	Average Sunday	Percent Change
	Feb-24	Jan-24	MOM	Oct-23	MO4M	Feb-23	YOY	Feb-20	Current vs Feb-20
Sundays									
87	446	456	-2.1%	362	23.3%	405	10.1%	319	39.9%
88	1,052	1,028	2.4%	1,255	-16.2%	1,379	-23.7%	1,286	-18.2%
97	130	153	-15.2%	149	-12.8%	157	-17.5%	201	-35.4%
100	9,603	9,486	1.2%	3,492	175.0%	4,070	135.9%	3,469	176.8%
103 - C						0		212	
103	788	784	0.5%	729	8.1%	670	17.6%	607	29.9%
104	505	485	4.1%	348	45.2%	349	44.7%	317	59.3%
105 - E				634		737		616	
107	1,018	984	3.4%	187	444.1%	109	831.4%	162	528.1%
108 - H				363		383		328	
110 - J				1,699		1,933		1,638	
113 - M				444		407		431	
115				66		58		80	
119 - S				7,612		8,724		7,141	
125	1,683	1,774	-5.2%	1,036	62.5%	1,057	59.2%	895	88.0%
135	580	627	-7.5%	474	22.3%	396	46.2%	349	65.9%
137-WEST DADE CONNECTION	984	1,005	-2.1%	956	3.0%	1,020	-3.5%	879	12.0%
150-MIAMI BEACH AIRPORT EXPRESS	1,526	1,465	4.1%	1,966	-22.4%	2,134	-28.5%	1,574	-3.1%
152	142	150	-5.2%	331	-57.2%	331	-57.2%	199	-28.7%
183	1,911	1,838	4.0%	1,569	21.8%	1,610	18.7%	1,413	35.3%
199	828	932	-11.1%	887	-6.7%	808	2.4%	658	25.8%
202 - LITTLE HAITI CONN				21		27		39	
207 (7th St)-LITTLE HAVANA CONN	545	620	-12.1%	648	-15.9%	997	-45.3%	796	-31.6%
208 (8th St)-LITTLE HAVANA CONN	677	664	1.9%	862	-21.4%	929	-27.1%	911	-25.7%
241 TUTTLE LIMITED				187		310			
301-DADE MONROE EXPRESS	892	920	-3.0%	867	3.0%	770	15.9%	751	18.8%
302-CARD SOUND EXPRESS	83	93	-11.1%	72	15.2%	110	-25.0%	57	44.7%
338 - WEEKEND EXPRESS	210	148	41.9%	247	-15.1%	222	-5.4%	252	-16.7%
400 - SOUTH OWL	102	89	15.1%	70	45.7%	63	60.9%	83	23.3%
401 - NORTH OWL	71	59	20.3%	65	9.1%	65	8.5%	87	-19.0%
500 - CUTLER BAY LOCAL	77	99	-22.2%	86	-11.0%	227	-66.2%	59	31.2%
510 - SKYLAKE CIRCULATOR (*)	274	189	44.8%	194	41.0%	88	211.1%	143	91.4%
12/21 WEEKEND INTERLINE	2,155	2,193	-1.7%	2,700	-20.2%	1,060	103.4%	2,048	5.2%
Total	84,707	83,433	1.5%	81,427	4.0%	85,254	-0.6%	75,428	12.3%

METROBUS TOTAL MONTHLY BOARDINGS BY ROUTE

Route	Total Month	Total Month	Percent Change	Total Month	Percent Change	Total Month	Percent Change	Total Month	Percent Change
	Feb-24	Jan-24	MOM	Oct-23	MO4M	Feb-23	YOY	Feb-20	Current vs Feb-20
total month									
2	49,414	44,139	12.0%	77,976	-36.6%	66,734	-26.0%	75,463	-34.5%
3	234,324	233,053	0.5%	164,203	42.7%	148,102	58.2%	146,294	60.2%
7	106,539	106,400	0.1%	104,507	1.9%	94,705	12.5%	86,077	23.8%
8	122,048	123,198	-0.9%	120,821	1.0%	117,389	4.0%	95,295	28.1%
9	287,645	282,801	1.7%	171,265	68.0%	148,690	93.5%	135,924	111.6%
10				70,338		62,152		64,874	
11	302,115	300,209	0.6%	253,837	19.0%	223,205	35.4%	187,425	61.2%
12	62,508	62,603	-0.2%	63,603	-1.7%	59,950	4.3%	55,585	12.5%
14	27,597	28,217	-2.2%						
15	11,434	11,803	-3.1%	4,545	151.6%	5,456	109.6%	4,114	177.9%
16				55,959		50,760		49,061	
17	181,483	173,834	4.4%	110,727	63.9%	96,752	87.6%	96,715	87.6%
19				39,745		32,243		30,847	
20	102,009	103,289	-1.2%						
21	42,153	42,635	-1.1%	46,355	-9.1%	35,043	20.3%	36,341	16.0%
22	66,545	68,302	-2.6%	118,329	-43.8%	106,307	-37.4%	89,404	-25.6%
24-CORAL WAY LIMITED	66,170	67,791	-2.4%	59,432	11.3%	57,468	15.1%	36,237	82.6%
26	62,656	61,223	2.3%	49,521	26.5%	53,842	16.4%	42,683	46.8%
27	243,521	244,074	-0.2%	188,160	29.4%	178,022	36.8%	171,282	42.2%
29				11,342		10,086		10,684	
31-BUSWAY LOCAL						30,560		29,125	
32	49,335	50,140	-1.6%	68,263	-27.7%	62,063	-20.5%	56,027	-11.9%
34 TRANSITWAY EXPRESS	38,852	38,389	1.2%	36,002	7.9%	29,916	29.9%	40,159	-3.3%
35	62,884	61,544	2.2%	79,573	-21.0%	66,502	-5.4%	59,041	6.5%
36	162,935	169,226	-3.7%	70,698	130.5%	67,497	141.4%	61,606	164.5%
37	120,855	125,197	-3.5%	93,471	29.3%	92,553	30.6%	82,870	45.8%
38 TRANSITWAY MAX	199,253	203,726	-2.2%	175,803	13.3%	154,607	28.9%	167,379	19.0%
39 TRANSITWAY EXPRESS	18,246	17,826	2.4%	16,333	11.7%			17,853	2.2%
40	48,675	50,298	-3.2%	57,992	-16.1%	52,878	-7.9%	40,497	20.2%
42				26,611		27,205		20,825	
46 - LIBERTY CITY CONN.				477		455		814	
52	43,579	44,636	-2.4%	35,844	21.6%	33,073	31.8%	30,522	42.8%
54	74,625	75,994	-1.8%	81,490	-8.4%	79,616	-6.3%	72,125	3.5%
56	13,705	13,377	2.5%	8,598	59.4%	8,053	70.2%	7,071	93.8%
57				11,491		10,151		8,665	
62	70,274	69,880	0.6%	67,398	4.3%	47,102	49.2%	46,582	50.9%
70	7,882	7,819	0.8%	3,546	122.3%	3,065	157.2%	2,690	193.0%

METROBUS TOTAL MONTHLY BOARDINGS BY ROUTE

Route	Total Month	Total Month	Percent Change	Total Month	Percent Change	Total Month	Percent Change	Total Month	Percent Change
total month	Feb-24	Jan-24	MOM	Oct-23	MO4M	Feb-23	YOY	Feb-20	Current vs Feb-20
72	23,557	24,375	-3.4%	17,459	34.9%	18,802	25.3%	18,433	27.8%
73	34,139	37,222	-8.3%	70,903	-51.9%	72,937	-53.2%	48,767	-30.0%
75	75,233	78,034	-3.6%	39,021	92.8%	31,176	141.3%	31,994	135.1%
77	307,325	304,046	1.1%	261,039	17.7%	218,108	40.9%	174,833	75.8%
79	229,766	240,364	-4.4%	239,146	-3.9%	233,408	-1.6%	200,268	14.7%
82 - WESTCHESTER CIRC				1,488		1,369		1,482	
87	56,957	57,635	-1.2%	46,254	23.1%	46,100	23.6%	33,273	71.2%
88	53,393	55,082	-3.1%	66,138	-19.3%	63,406	-15.8%	54,772	-2.5%
95-EXPRESS GOLDEN GLADES	27,665	27,659	0.0%	26,295	5.2%	20,826	32.8%	33,796	-18.1%
97	5,146	5,267	-2.3%	6,337	-18.8%	5,401	-4.7%	5,558	-7.4%
100	430,914	454,223	-5.1%	174,819	146.5%	187,799	129.5%	170,942	152.1%
103 - C								11,682	
103	56,406	57,319	-1.6%	51,871	8.7%	47,411	19.0%	40,918	37.9%
104	31,480	31,829	-1.1%	26,049	20.8%	22,855	37.7%	20,351	54.7%
105 - E				37,092		36,265		31,302	
107	57,198	59,086	-3.2%	20,040	185.4%	16,745	241.6%	16,118	254.9%
108 - H				14,133		15,019		12,624	
110 - J				79,080		81,273		66,481	
113 - M				24,040		15,388		21,548	
115				3,968		3,564		4,334	
119 - S				281,456		277,861		242,257	
125	115,943	116,643	-0.6%	56,547	105.0%	51,122	126.8%	43,178	168.5%
132 -TRI-RAIL DORAL SHUTTLE	1,023	1,117	-8.4%	804	27.2%	782	30.8%	312	227.9%
135	51,537	49,360	4.4%	43,211	19.3%	36,114	42.7%	32,067	60.7%
136	3,748	3,495	7.2%	3,557	5.4%	2,778	34.9%	2,524	48.5%
137-WEST DADE CONNECTION	63,144	66,610	-5.2%	56,750	11.3%	55,786	13.2%	41,167	53.4%
150-MIAMI BEACH AIRPORT EXPRESS	44,769	46,908	-4.6%	65,763	-31.9%	65,094	-31.2%	51,651	-13.3%
152	9,983	10,489	-4.8%	26,285	-62.0%	24,856	-59.8%	19,325	-48.3%
155 - BISCAYNE GARDENS CIRC				985		858		881	
175 - NW MIAMI-DADE EXPRESS								661	
183	132,219	131,742	0.4%	96,050	37.7%	86,489	52.9%	77,570	70.5%
195 EXPRESS - BROWARD BLVD								7,441	
196 EXPRESS - SHERIDAN ST								7,658	
199	49,896	53,021	-5.9%	50,634	-1.5%	40,851	22.1%	36,325	37.4%
202 - LITTLE HAITI CONN				2,620		1,747		3,200	
203 - BISCAYNE MAX	34,637	30,159	14.8%	80,650	-57.1%	71,849	-51.8%	66,684	-48.1%

METROBUS TOTAL MONTHLY BOARDINGS BY ROUTE

Route	Total Month	Total Month	Percent Change	Total Month	Percent Change	Total Month	Percent Change	Total Month	Percent Change
	Feb-24	Jan-24	MOM	Oct-23	MO4M	Feb-23	YOY	Feb-20	Current vs Feb-20
total month									
204 KILLIAN MAX	14,001	13,562	3.2%	13,632	2.7%	14,284	-2.0%	21,418	-34.6%
207 (7th St)-LITTLE HAVANA CONN	44,460	45,538	-2.4%	46,970	-5.3%	44,929	-1.0%	38,127	16.6%
208 (8th St)-LITTLE HAVANA CONN	44,388	43,892	1.1%	44,922	-1.2%	43,708	1.6%	35,018	26.8%
211 OVERTOWN CIRCULATOR				1,567		1,741		1,159	
211 - FLAGLER MAX	41,687	39,398	5.8%	84,135	-50.5%	80,295	-48.1%	62,186	-33.0%
212-SWEETWATER CIRC				494		533		295	
217 - BUNCHE PARK CIRC				1,759		1,222		1,949	
238-EAST/WEST CONN				13,036		12,147		8,987	
241 TUTTLE LIMITED				9,471		8,174			
254-BROWNSVILLE CIRC				105		115		384	
267-LUDLAM LIMITED				3,567		3,516		2,978	
272 SUNSET MAX (*)	7,859	8,179	-3.9%	9,423	-16.6%	8,033	-2.2%	11,004	-28.6%
277-7TH AVENUE MAX				19,345		15,730		13,669	
279 - 79 STREET MAX	15,066	15,789	-4.6%	10,318	46.0%	12,045	25.1%	7,228	108.4%
286-NORTH POINTE CIRC				2,279		2,076		2,145	
287-SAGA BAY MAX	8,488	8,512	-0.3%	7,499	13.2%	7,353	15.4%	7,160	18.5%
288 KENDALL MAX	11,151	10,618	5.0%	8,189	36.2%	9,334	19.5%	15,249	-26.9%
295								4,668	
296								4,297	
297-27th AVENUE ORANGE MAX				27,047		25,039		27,125	
301-DADE MONROE EXPRESS	29,413	30,869	-4.7%	28,889	1.8%	24,067	22.2%	23,838	23.4%
302-CARD SOUND EXPRESS	2,968	3,135	-5.3%	2,728	8.8%	3,349	-11.4%	2,236	32.7%
338 - WEEKEND EXPRESS	1,501	1,438	4.4%	2,274	-34.0%	2,133	-29.6%	2,191	-31.5%
344	2,747	3,014	-8.9%	1,666	64.9%	1,466	87.4%	1,919	43.1%
400 - SOUTH OWL	2,475	2,828	-12.5%	2,324	6.5%	2,123	16.6%	2,301	7.6%
401 - NORTH OWL	1,943	1,530	27.0%	1,899	2.3%	1,554	25.0%	2,641	-26.4%
500 - CUTLER BAY LOCAL	7,405	6,944	6.6%	4,907	50.9%	3,974	86.3%	3,984	85.9%
510 - SKYLAKE CIRCULATOR (*)	10,168	10,633	-4.4%	12,211	-16.7%	6,953	46.2%	7,033	44.6%
836 EXPRESS	7,043	7,118	-1.1%	5,428	29.8%	4,887	44.1%		
837 EXPRESS	4,273	4,429	-3.5%	4,281	-0.2%	2,210	93.3%		
12/21 WEEKEND INTERLINE	20,818	22,109	-5.8%	26,661	-21.9%	16,696	24.7%	20,830	-0.1%
AHEPA SHUTTLE	83	76	9.2%	71	16.9%	65	27.7%	83	0.0%
FEDERATION GARDENS SHUTTLE	98	76	28.9%	80	22.5%	80	22.5%	142	-31.0%
GREEN HILLS SHUTTLE	33	31	6.5%	26	26.9%	16	106.3%	36	-8.3%
KINGS CREEK SHUTTLE	45	39	15.4%	55	-18.2%	76	-40.8%	52	-13.5%
ROBERT SHARP SHUTTLE	113	101	11.9%	92	22.8%	90	25.6%	38	197.4%
SIERRA LAKES SHUTTLE	100	91	9.9%	62	61.3%	63	58.7%	180	-44.4%
Total	5,053,665	5,103,257	-1.0%	4,912,151	2.9%	4,526,317	11.7%	4,123,083	22.6%

BUS RIDERSHIP BY ROUTE SERVICE TYPE LINEUPS COMPARISON

Boardings by Service Type and Route	Average Weekday	Average Weekday	Percent Change	Average Saturday	Average Saturday	Percent Change	Average Sunday	Average Sunday	Percent Change	Total Monthly	Total Monthly	Percent Change
	Feb-24	Oct-23	24 vs 23	Feb-24	Oct-23	24 vs 23	Feb-24	Oct-23	24 vs 23	Feb-24	Oct-23	24 vs 23
Directly Operated Express Routes												
34 TRANSITWAY EXPRESS	1,850	1,636	13.1%							38,852	36,002	7.9%
39 TRANSITWAY EXPRESS	869	742	17.0%							18,246	16,333	11.7%
95-EXPRESS GOLDEN GLADES	1,317	1,195	10.2%							27,665	26,295	5.2%
150-MIAMI BEACH AIRPORT EXPRESS	1,549	2,149	-27.9%	1,536	2,161	-28.9%	1,526	1,966	-22.4%	44,769	65,763	-31.9%
338 - WEEKEND EXPRESS				165	259	-36.3%	210	247	-15.1%	1,501	2,274	-34.0%
836 EXPRESS	335	247	35.9%							7,043	5,428	29.8%
837 EXPRESS	203	195	4.6%							4,273	4,281	-0.2%
Subtotal Express Routes	6,124	6,165	-0.7%	1,701	2,420	-29.7%	1,736	2,214	-21.6%	142,349	156,376	-9.0%
Percentage of All Bus Routes	3.1%	3.3%		1.3%	2.3%		2.0%	2.7%		2.8%	3.2%	
Contracted Routes - Local Service (*)												
2	2,018	2,977	-32.2%	969	1,605	-39.6%	792	1,214	-34.8%	49,414	77,976	-36.6%
15	425	178	139.2%	348	93	273.5%	280	53	428.8%	11,434	4,545	151.6%
29		516									11,342	
46 - LIBERTY CITY CONN.		22									477	
56	609	391	55.8%	230						13,705	8,598	59.4%
70	315	161	95.7%	172			143			7,882	3,546	122.3%
72	946	670	41.3%	522	357	46.4%	399	259	53.7%	23,557	17,459	34.9%
82 - WESTCHESTER CIRC		61			38						1,488	
97	185	225	-17.5%	184	163	12.6%	130	149	-12.8%	5,146	6,337	-18.8%
115		151			80						3,968	
152	402	1,051	-61.8%	243	375	-35.2%	142	331	-57.2%	9,983	26,285	-62.0%
155 - BISCAYNE GARDENS CIRC		45									985	
202 - LITTLE HAITI CONN		110			22			21			2,620	
211 OVERTOWN CIRCULATOR		71									1,567	
212-SWEETWATER CIRC		22									494	
217 - BUNCHE PARK CIRC		80									1,759	
254-BROWNSVILLE CIRC		5									105	
267-LUDLAM LIMITED		162									3,567	
286-NORTH POINTE CIRC		93		0	61						2,279	
344	118	76	55.8%	68						2,747	1,666	64.9%
401 - NORTH OWL	65	61	6.7%	76	61	24.8%	71	65	9.1%	1,943	1,899	2.3%
Subtotal Contracted Reg. & Circ. Routes	5,083	7,125	-28.7%	2,811	2,854	-1.5%	1,956	2,158	-9.4%	125,811	178,962	-29.7%
Percentage of All Bus Routes	2.6%	3.8%		2.1%	2.7%		2.3%	2.7%		2.5%	3.6%	

- (1) Several express routes were suspended beginning at the end of March 2020, due to the SARS-CoV-2 pandemic, while other routes had alignment and schedule modifications made to them, in an ongoing effort to optimize service delivery.
- (2) A second major round of changes took place with the 11/13/23 lineup known as the Better Bus Network, as listed at the start of this Metrobus section.

BUS RIDERSHIP BY ROUTE SERVICE TYPE LINEUPS COMPARISON

Boardings by Service Type and Route	Average Weekday	Average Weekday	Percent Change	Average Saturday	Average Saturday	Percent Change	Average Sunday	Average Sunday	Percent Change	Total Monthly	Total Monthly	Percent Change
	Feb-24	Oct-23	24 vs 23	Feb-24	Oct-23	24 vs 23	Feb-24	Oct-23	24 vs 23	Feb-24	Oct-23	24 vs 23
Contracted Express Routes												
301-DADE MONROE EXPRESS	1,047	955	9.6%	967	885	9.2%	892	867	3.0%	29,413	28,889	1.8%
302-CARD SOUND EXPRESS	106	91	17.3%	102	94	8.0%	83	72	15.2%	2,968	2,728	8.8%
Subtotal Contracted Express Routes	1,153	1,046	10.2%	1,068	979	9.1%	975	938	3.9%	32,381	31,617	2.4%
Percentage of All Bus Routes	0.6%	0.6%		0.8%	0.9%		1.2%	1.2%		0.6%	0.6%	
Limited Stop Routes												
24-CORAL WAY LIMITED	2,544	2,195	15.9%	2,017	1,400	44.0%	1,171	1,108	5.7%	66,170	59,432	11.3%
38 TRANSITWAY MAX	7,402	5,714	29.5%	6,217	6,328	-1.8%	4,739	4,957	-4.4%	199,253	175,803	13.3%
203 - BISCAYNE MAX	1,649	3,666	-55.0%							34,637	80,650	-57.1%
204 KILLIAN MAX	667	620	7.6%							14,001	13,632	2.7%
211 - FLAGLER MAX	1,985	3,824	-48.1%							41,687	84,135	-50.5%
241 TUTTLE LIMITED		348			222			187			9,471	
272 SUNSET MAX (*)	374	428	-12.6%							7,859	9,423	-16.6%
277-7TH AVENUE MAX		879									19,345	
279 - 79 STREET MAX	717	469	53.0%							15,066	10,318	46.0%
287-SAGA BAY MAX	404	341	18.6%							8,488	7,499	13.2%
288 KENDALL MAX	531	372	42.7%							11,151	8,189	36.2%
297-27th AVENUE ORANGE MAX		1,229									27,047	
Subtotal Limited Stop Routes	16,273	20,086	-19.0%	8,234	7,950	3.6%	5,910	6,252	-5.5%	398,312	504,944	-21.1%
Percentage of All Bus Routes	8.2%	10.8%		6.2%	7.4%		7.0%	7.7%		7.9%	10.3%	
Directly Operated Free Routes												
132 -TRI-RAIL DORAL SHUTTLE	49	37	33.3%							1,023	804	27.2%
500 - CUTLER BAY LOCAL	289	176	64.4%	257	152	69.2%	77	86	-11.0%	7,405	4,907	50.9%
510 - SKYLAKE CIRCULATOR (*)	377	471	-19.9%	287	217	32.0%	274	194	41.0%	10,168	12,211	-16.7%
Subtotal Free Directly Operated Routes	715	684	4.6%	544	369	47.3%	351	280	25.0%	18,596	17,922	3.8%
Percentage of All Bus Routes	0.4%	0.4%		0.4%	0.3%		0.4%	0.3%		0.4%	0.4%	
Contractor-Operated Lifeline Routes												
GREEN HILLS SHUTTLE	8	5	58.7%							33	26	26.9%
KINGS CREEK SHUTTLE	9	14	-34.5%							45	55	-18.2%
SIERRA LAKES SHUTTLE	25	16	61.3%							100	62	61.3%
ROBERT SHARP SHUTTLE	28	23	22.8%							113	92	22.8%
AHEPA SHUTTLE	17	18	-6.5%							83	71	16.9%
FEDERATION GARDENS SHUTTLE				25	20	22.5%				98	80	22.5%
Subtotal Contractor-Operated Lifeline Routes	87	75	15.8%	25	20	22.5%				472	386	22.3%
Percentage of All Bus Routes	0.0%	0.0%		0.0%	0.0%					0.0%	0.0%	
All Other (Regular) Routes	169,828	150,140	13.1%	118,559	92,739	27.8%	73,781	69,584	6.0%	4,335,744	4,021,944	7.8%
Percentage of All Bus Routes	85.2%	81.0%		89.2%	86.4%		87.1%	85.5%		85.8%	81.9%	
Total Bus System	199,263	185,320	7.5%	132,941	107,331	23.9%	84,707	81,427	4.0%	5,053,665	4,912,151	2.9%

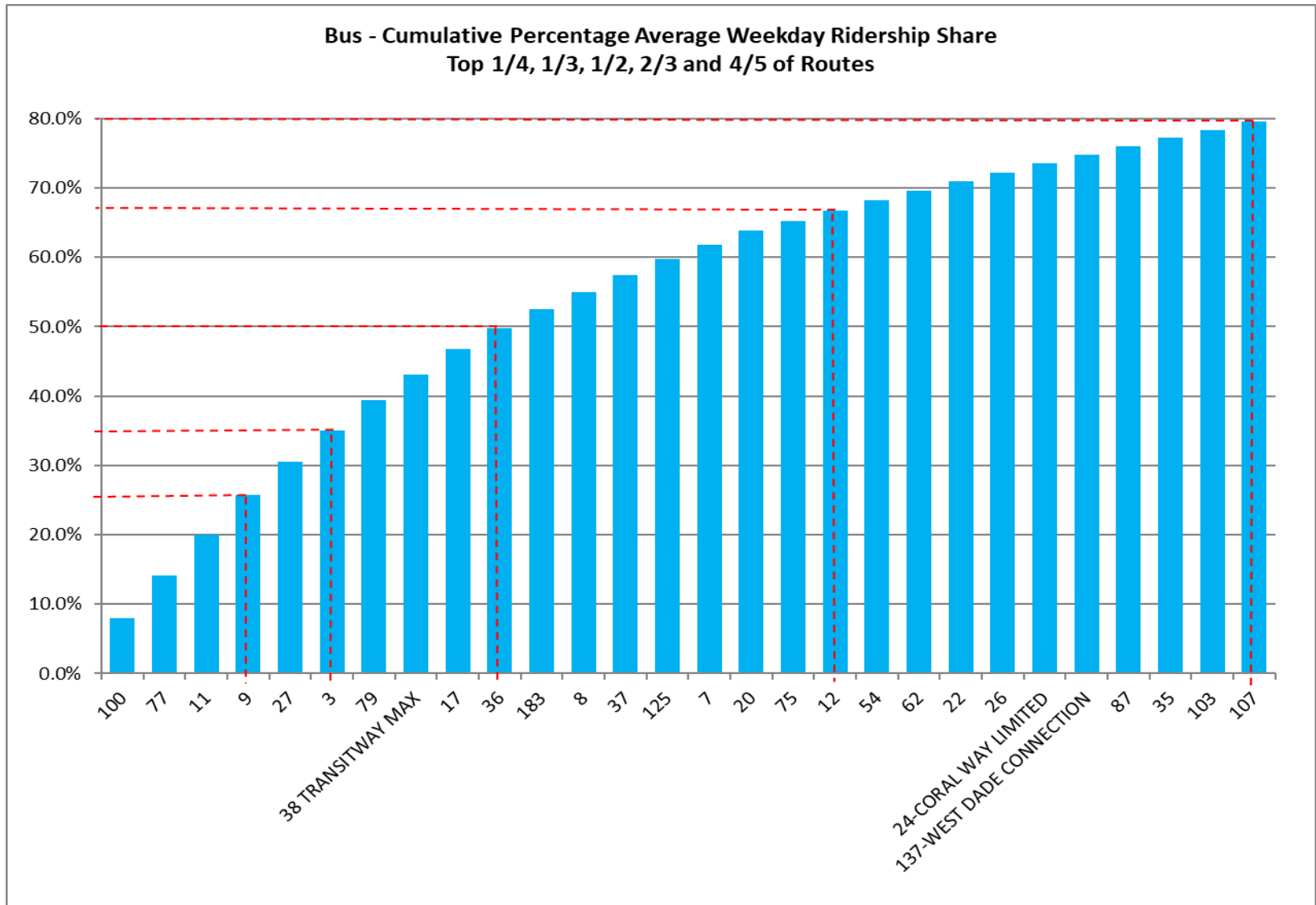
Bus Routes as Ranked by Percentage of Average Weekday Ridership February 2024

Rank	Route	Average Weekday	Percent Share	Cumul Pct Share	Rank	Route	Average Weekday	Percent Share	Cumul Pct Share	Rank	Route	Average Weekday	Percent Share	Cumul Pct Share
1	100	15,894	8.0%	8.0%	29	35	2,435	1.2%	77.2%	57	510	377	0.2%	98.8%
2	77	12,375	6.2%	14.2%	30	new 103	2,270	1.1%	78.4%	58	272	374	0.2%	99.0%
3	11	11,491	5.8%	20.0%	31	2	2,018	1.0%	82.6%	59	836	335	0.2%	99.2%
4	9	11,460	5.8%	25.7%	32	21	2,007	1.0%	83.6%	60	70	315	0.2%	99.3%
5	27	9,634	4.8%	30.5%	33	40	1,989	1.0%	84.6%	61	500	289	0.1%	99.5%
6	3	8,981	4.5%	35.0%	34	new 211	1,985	1.0%	85.6%	62	837	203	0.1%	99.6%
7	79	8,584	4.3%	39.4%	35	32	1,962	1.0%	86.6%	63	97	185	0.1%	99.7%
8	38	7,402	3.7%	43.1%	36	199	1,959	1.0%	87.6%	64	136	178	0.1%	99.7%
9	17	7,233	3.6%	46.7%	37	34	1,850	0.9%	88.5%	65	344	118	0.1%	99.8%
10	36	6,222	3.1%	49.8%	38	207	1,823	0.9%	89.4%	66	302	106	0.1%	99.9%
11	183	5,325	2.7%	52.5%	39	208	1,792	0.9%	90.3%	67	400	82	0.0%	99.9%
12	8	4,979	2.5%	55.0%	40	52	1,706	0.9%	91.2%	68	401	65	0.0%	99.9%
13	37	4,728	2.4%	57.4%	41	203	1,649	0.8%	92.0%	69	132	49	0.0%	100.0%
14	125	4,669	2.3%	59.7%	42	150	1,549	0.8%	92.8%	70	RS	28	0.0%	100.0%
15	7	4,248	2.1%	61.8%	43	73	1,464	0.7%	93.5%	71	SL	25	0.0%	100.0%
16	20	3,861	1.9%	63.8%	44	95	1,317	0.7%	94.2%	72	AS	17	0.0%	100.0%
17	75	2,986	1.5%	65.3%	45	104	1,247	0.6%	94.8%	73	KC	9	0.0%	100.0%
18	12	2,977	1.5%	66.8%	46	301	1,047	0.5%	95.3%	74	GH	8	0.0%	100.0%
19	54	2,961	1.5%	68.3%	47	14	975	0.5%	95.8%					
20	62	2,753	1.4%	69.6%	48	72	946	0.5%	96.3%					
21	22	2,617	1.3%	71.0%	49	39	869	0.4%	96.7%					
22	26	2,556	1.3%	72.2%	50	279	717	0.4%	97.1%					
23	24	2,544	1.3%	73.5%	51	204	667	0.3%	97.4%					
24	137	2,504	1.3%	74.8%	52	56	609	0.3%	97.7%					
25	87	2,438	1.2%	76.0%	53	288	531	0.3%	98.0%					
26	107	2,263	1.1%	79.5%	54	15	425	0.2%	98.2%					entirely contracted in Feb-24
27	135	2,159	1.1%	80.6%	55	287	404	0.2%	98.4%					
28	88	2,041	1.0%	81.6%	56	152	402	0.2%	98.6%					
Total Boardings												199,263	100.00%	100.0%

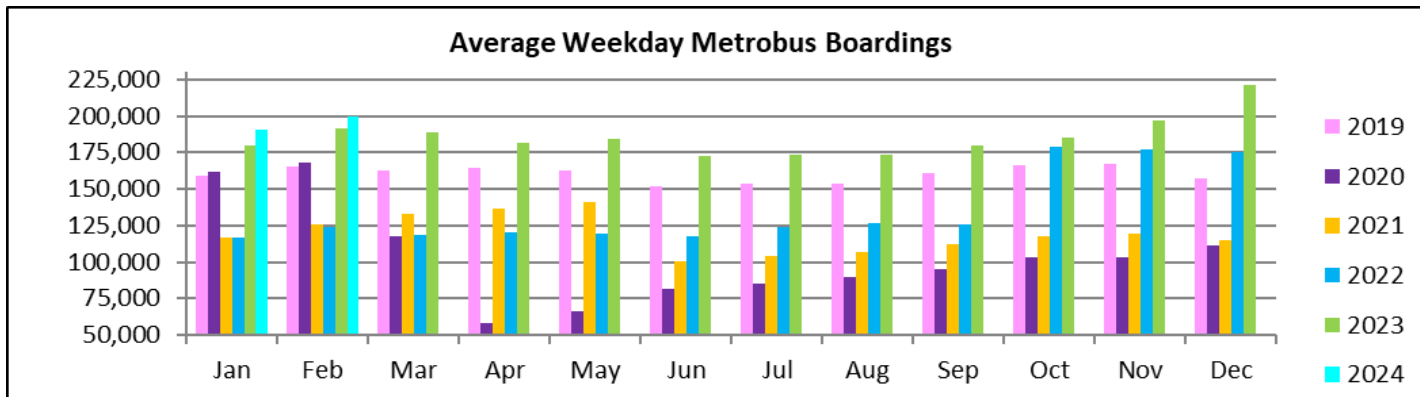
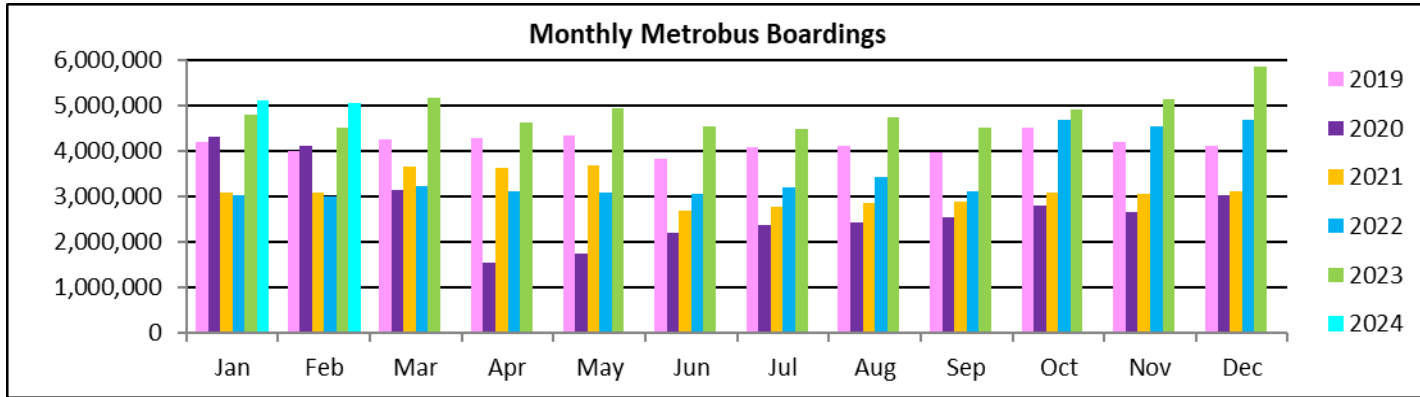
(1) Average weekday ridership rounded to the nearest unit.

(2) Includes the five Lifeline Shuttles that operate on weekdays: Ahepa (AS), Green Hills (GH), Kings Creek (KC), Robert Sharp (RS) and Sierra Lakes (SL).

METROBUS CUMULATIVE PERCENTAGE RIDERSHIP SHARE – BY ROUTE



TOTAL MONTHLY AND AVERAGE WEEKDAY RIDERSHIP YEAR OVER YEAR COMPARISON CHARTS – METROBUS



**“TOP 10 / BOTTOM 10” BUS ROUTES AVERAGE WEEKDAY RIDERSHIP PERFORMANCE
MONTH OVER MONTH COMPARISON**

Route	Feb-24	Jan-24	Absolute Delta	Percent Delta
77	12,375	11,487	888	7.7%
9	11,460	10,629	830	7.8%
17	7,233	6,506	727	11.2%
3	8,981	8,307	675	8.1%
11	11,491	10,972	519	4.7%
27	9,634	9,220	414	4.5%
183	5,325	4,994	331	6.6%
2	2,018	1,707	310	18.2%
38 TRANSITWAY MAX	7,402	7,102	299	4.2%
125	4,669	4,370	298	6.8%
100	15,894	16,041	-147	-0.9%
73	1,464	1,518	-54	-3.5%
510 - SKYLAKEL CIRCULATOR	377	400	-22	-5.6%
199	1,959	1,968	-9	-0.5%
344	118	124	-6	-4.7%
400 - SOUTH OWL	82	87	-5	-5.5%
132 - TRI-RAIL DORAL SHUTTLE	49	51	-2	-4.1%
137-WEST DADE CONNECTION	2,504	2,506	-2	-0.1%
279 - 79 STREET MAX	717	718	0	0.0%
302-CARD SOUND EXPRESS	106	106	0	0.2%

- (*) Averages rounded to the nearest boarding, data as estimated from automatic passenger counter (APC) system; Lifeline shuttles excluded.
(1) The adjective "new" in front of some new Better Bus Network-generated (recycled) route numbers was added to help prevent confusion with older but different routes with the same number present in previous months or years.

“TOP 10 / BOTTOM 10” BUS ROUTES SETS AVERAGE WEEKDAY RIDERSHIP PERFORMANCE YEAR OVER YEAR COMPARISON

Route Set (*), (1), (2)	Feb-24	Feb-23	Absolute Delta	Percent Delta	routes included in set
{ 20 }	5,822	2,939	2,883	98.1%	20, 32, 115
{ 11 }	11,491	9,178	2,312	25.2%	11, 212
{ 77 }	12,375	10,159	2,216	21.8%	77, 277
{ 17 & 22 & 75 }	12,837	10,765	2,071	19.2%	17, 22, 75, 108, 217
{ 3 & 203 }	10,630	9,034	1,596	17.7%	3, 93, 203
{ new 107 }	5,622	4,187	1,435	34.3%	35, 56, 70, 71, new 107, 248
{ 125 }	4,669	3,819	850	22.2%	19, 107, 125
{ 62 }	2,753	2,029	724	35.7%	62, 202
{ 27 }	9,634	8,918	716	8.0%	27, 297
{ 9 }	11,460	10,776	684	6.3%	9, 10, 16
{ 100 }	15,894	19,387	-3,493	-18.0%	100, 105, 119, 120
{ new 211 }	12,011	14,092	-2,082	-14.8%	8, 24, 51, 82, 137, new 211
{ 73 & 183 }	6,789	8,457	-1,668	-19.7%	57, 73, 183, 238, 267, 286
{ 37 & 54 }	7,688	9,003	-1,315	-14.6%	29, 37, 42, 54, 254
{ 2 }	2,018	2,945	-927	-31.5%	2
150	1,549	2,372	-823	-34.7%	150
{ 279 }	9,302	9,937	-635	-6.4%	79, 112, 279
88	2,041	2,578	-537	-20.8%	88
{ 52 }	2,109	2,590	-482	-18.6%	52, 152, 252
40	1,989	2,445	-456	-18.7%	40

(*) Averages rounded to the nearest boarding, data as estimated from automatic passenger counter (APC) system; Lifeline shuttles excluded.

(1) The route sets, denoted by brackets, include the new 11/13/2023 lineup's Better Bus Network route designations, as well as older routes present for the first part of the month and previous months and years, then either renamed, absorbed, or eliminated. The sets were defined to enable reasonably fair comparisons between pre- and post-BBN timeframes, to the extent possible and practical, given the complexity of the changes for some of the routes and sets. The definitions are based on information from the DTPW website, and subject to future adjustments, if necessary.

(2) The adjective "new" in front of some new Better Bus Network-generated (recycled) route numbers was added to help prevent confusion with older but different routes with the same number present in previous months or years.

“TOP 10 / BOTTOM 10” BUS ROUTES SETS AVERAGE WEEKDAY RIDERSHIP PERFORMANCE MONTH OVER 4-MONTH PRIOR COMPARISON

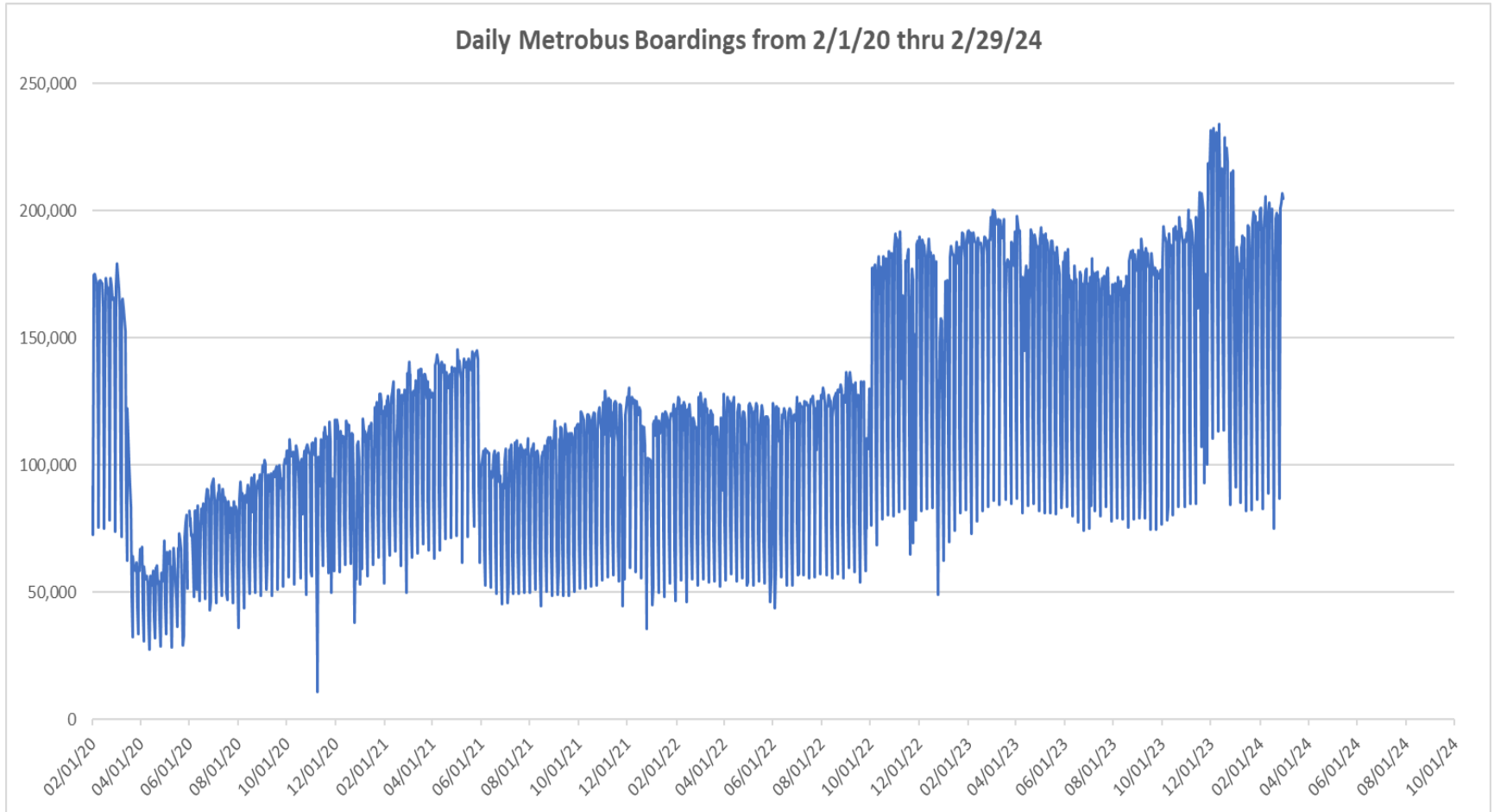
Route Set (*), (1), (2)	Feb-24	Oct-23	Absolute Delta	Percent Delta	routes included in set
{ 20 }	5,822	2,850	2,973	104.3%	20, 32, 115
{ 17 & 22 & 75 }	12,837	10,796	2,041	18.9%	17, 22, 75, 108, 217
{ 11 }	11,491	9,644	1,847	19.1%	11, 212
{ 38 }	7,519	5,790	1,730	29.9%	38, 344
{ 3 & 203 }	10,630	9,082	1,549	17.1%	3, 93, 203
{ 77 }	12,375	10,838	1,537	14.2%	77, 277
{ 27 }	9,634	8,339	1,295	15.5%	27, 297
{ new 107 }	5,622	4,447	1,175	26.4%	35, 56, 70, 71, new 107, 248
{ 125 }	4,669	3,906	763	19.5%	19, 107, 125
26	2,556	1,877	678	36.1%	26
{ 100 }	15,894	17,117	-1,222	-7.1%	100, 105, 119, 120
{ 73 & 183 }	6,789	7,890	-1,101	-14.0%	57, 73, 183, 238, 267, 286
{ 2 }	2,018	3,048	-1,030	-33.8%	2
{ new 211 }	12,011	12,849	-838	-6.5%	8, 24, 51, 82, 137, new 211
150	1,549	2,149	-601	-27.9%	150
{ 37 & 54 }	7,688	8,082	-394	-4.9%	29, 37, 42, 54, 254
88	2,041	2,419	-378	-15.6%	88
40	1,989	2,344	-356	-15.2%	40
{ 52 }	2,109	2,442	-333	-13.6%	52, 152, 252
{ 14 }	975	1,234	-259	-21.0%	14, 113, 241

(*) Averages rounded to the nearest boarding, data as estimated from automatic passenger counter (APC) system; Lifeline shuttles excluded.

(1) The route sets, denoted by brackets, include the new 11/13/2023 lineup's Better Bus Network route designations, as well as older routes present for the first part of the month and previous months and years, then either renamed, absorbed, or eliminated. The sets were defined to enable reasonably fair comparisons between pre- and post-BBN timeframes, to the extent possible and practical, given the complexity of the changes for some of the routes and sets. The definitions are based on information from the DTPW website, and subject to future adjustments, if necessary.

(2) The adjective "new" in front of some new Better Bus Network-generated (recycled) route numbers was added to help prevent confusion with older but different routes with the same number present in previous months or years.

DAILY METROBUS RIDERSHIP SINCE FEBRUARY 1, 2020



- (1) There was no Metrobus, Metrorail and Metromover service on 5/31/20, as a safety precaution, and no service for any of the four modes on 9/28/22, as a result of Hurricane Ian.
- (2) The dip at the start of the second week of December 2020 is due to Hurricane Eta.
- (3) Daily variations from October 2022 onward are estimated from reports made available by the Bus APC data vendor; the data is based on statistical sampling.
- (4) The reduction seen beginning 6/1/21 is partly due to the resumption of fares and partly the result of resuming reporting Cubic farebox data rather than bus APC counts; the jump seen at the start of December 2022 is due to the return to APC bus ridership counts reporting beginning 10/1/22; the peak in Dec 2023 is attributable to the Better Bus Network launch period and attendant free fares.
- (5) Periodic (weekly) variations are prominent, since weekday ridership is almost always significantly higher than weekend or holiday ridership.

METROBUS PARKING PATRONAGE SUMMARY February 2024

PARK-RIDE LOT	ACTUAL AVAILABLE SPACES	ACTUAL OCCUPANCY	PERCENT OCCUPANCY
Transitway / SW 152nd St	200	128	64%
Transitway / SW 168th St (*)	149	0	0%
Transitway / SW 200th Street	100	36	36%
Transitway / SW 112 Ave (Target)	450	141	31%
Transitway / SW 244th St	95	92	97%
Transitway / SW 296th St	139	19	14%
Transitway / SW 344th St	248	171	69%
Coral Reef Drive 117/ Turnpike	95	78	82%
Golden Glades Facility	2,150	397	18%
Hammocks Town Center (SW 152 Ave / SW 104 St)	50	17	34%
Kendall Dr./SW 127th Ave	161	11	7%
West Kendall Transit Term (Kendall Dr / SW162 Ave)	40	20	50%
NW 7th Avenue Transit Village (NW 7 Ave / NW 62 St)	25	21	84%
Miami Gardens Dr. / NW 73rd Ave	136	2	1%
Dolphin Station	348	74	21%
Tamiami Station (eff 11-2022)	442	56	13%
I-75 / Miami Gardens Dr (**)	298	0	0%
TOTAL	5,126	1,263	25%

(*) Closed for construction beginning February 2022

(**) Route 175 Suspended 3/27/2020

Metrorail



METRORAIL AVERAGE WEEKDAY BOARDINGS BY STATION (†)

Weekdays	Average Weekday	Average Weekday	Percent Change	Average Weekday	Percent Change	Average Weekday	Percent Change	Average Weekday	Percent Change
STATIONS	Feb-24	Feb-23	YOY	Feb-20	Current vs Feb-20	Jan-24	MOM	Feb-19	YO4/5Y
ALLAPATTAH	1,772	1,660	6.8%	1,942	-8.8%	1,669	6.2%	1,878	-5.7%
BRICKELL	5,758	5,386	6.9%	6,529	-11.8%	5,335	7.9%	6,301	-8.6%
BROWNSVILLE	501	719	-30.3%	862	-41.8%	499	0.4%	867	-42.2%
CIVIC CENTER	4,172	4,190	-0.4%	6,143	-32.1%	3,998	4.4%	5,904	-29.3%
COCONUT GROVE	1,751	1,223	43.2%	1,795	-2.4%	1,648	6.3%	1,722	1.7%
CULMER	1,042	1,051	-0.8%	1,392	-25.1%	1,009	3.3%	1,308	-20.3%
DADELAND NORTH	4,356	3,993	9.1%	5,926	-26.5%	4,164	4.6%	6,059	-28.1%
DADELAND SOUTH	5,034	4,556	10.5%	7,150	-29.6%	4,783	5.2%	7,202	-30.1%
DOUGLAS ROAD	3,406	2,121	60.6%	3,624	-6.0%	2,876	18.4%	3,855	-11.6%
DR. MARTIN LUTHER KING, JR.	776	848	-8.5%	1,157	-32.9%	763	1.8%	1,150	-32.5%
EARLINGTON HEIGHTS	1,474	1,354	8.9%	1,662	-11.3%	1,399	5.4%	1,651	-10.7%
GOVERNMENT CENTER	7,026	7,024	0.0%	10,557	-33.4%	6,770	3.8%	10,663	-34.1%
HIALEAH	1,153	1,219	-5.4%	1,253	-8.0%	1,068	7.9%	1,386	-16.8%
MIAMI INTERNATIONAL AIRPORT	1,224	1,323	-7.5%	1,711	-28.4%	1,340	-8.6%	1,682	-27.2%
NORTHSIDE	1,191	1,358	-12.3%	1,476	-19.3%	1,311	-9.1%	1,452	-18.0%
OKEECHOBEE	1,012	927	9.1%	1,164	-13.1%	927	9.1%	1,187	-14.7%
OVERTOWN / ARENA	1,968	1,663	18.3%	2,274	-13.5%	1,885	4.4%	2,167	-9.2%
PALMETTO	1,253	1,293	-3.1%	1,543	-18.8%	1,190	5.3%	1,528	-18.0%
SANTA CLARA	792	721	9.9%	812	-2.5%	761	4.0%	785	0.8%
SOUTH MIAMI	2,281	2,111	8.1%	3,015	-24.3%	2,111	8.1%	3,036	-24.9%
TRI-RAIL	1,170	1,151	1.7%	1,207	-3.0%	1,151	1.7%	1,165	0.5%
UNIVERSITY	2,343	2,165	8.2%	2,784	-15.9%	1,808	29.5%	2,576	-9.1%
VIZCAYA	1,297	1,190	9.0%	1,390	-6.7%	1,259	3.0%	1,209	7.2%
TOTAL	52,755	49,246	7.1%	67,367	-21.7%	49,724	6.1%	66,735	-20.9%

(†) In this table and those which follow, “YOY” stands for “year-over-year”, “MOM” for “month-over-month” and, e.g., “YO4Y” for “year over four years”, i.e., current month vs 12 months prior, one month prior, and 48 months prior, respectively. The February 2020 numbers serve as a pre-pandemic benchmark.

METRORAIL AVERAGE SATURDAY BOARDINGS BY STATION

Saturdays	Average Saturday	Average Saturday	Percent Change	Average Saturday	Percent Change	Average Saturday	Percent Change	Average Saturday	Percent Change
STATIONS	Feb-24	Feb-23	YOY	Feb-20	Current vs Feb-20	Jan-24	MOM	Feb-19	YO4/5Y
ALLAPATTAH	935	904	3.4%	1,051	-11.1%	875	6.9%	1,050	-10.9%
BRICKELL	2,733	2,433	12.3%	2,811	-2.8%	2,740	-0.2%	2,751	-0.6%
BROWNSVILLE	287	454	-36.8%	520	-44.8%	315	-9.0%	560	-48.7%
CIVIC CENTER	655	759	-13.7%	959	-31.7%	661	-0.8%	954	-31.4%
COCONUT GROVE	997	779	28.0%	928	7.4%	833	19.8%	1,006	-0.8%
CULMER	466	488	-4.5%	721	-35.4%	472	-1.2%	687	-32.2%
DADELAND NORTH	1,400	1,407	-0.5%	1,994	-29.8%	1,345	4.1%	2,114	-33.8%
DADELAND SOUTH	2,092	1,924	8.7%	2,625	-20.3%	1,991	5.1%	2,748	-23.9%
DOUGLAS ROAD	1,385			1,319	5.0%	1,178	17.6%	1,522	-9.0%
DR. MARTIN LUTHER KING, JR.	426	480	-11.4%	625	-31.9%	439	-3.0%	639	-33.4%
EARLINGTON HEIGHTS	818	730	12.1%	935	-12.5%	806	1.5%	976	-16.1%
GOVERNMENT CENTER	2,868	2,819	1.8%	4,262	-32.7%	2,832	1.3%	4,050	-29.2%
HIALEAH	540	602	-10.2%	583	-7.3%	508	6.3%	644	-16.1%
MIAMI INTERNATIONAL AIRPORT	834	961	-13.2%	1,330	-37.3%	960	-13.2%	1,325	-37.1%
NORTHSIDE	717	825	-13.1%	878	-18.4%	747	-4.0%	957	-25.1%
OKEECHOBEE	402	343	17.1%	408	-1.6%	371	8.3%	411	-2.1%
OVERTOWN / ARENA	680	568	19.7%	678	0.2%	679	0.0%	598	13.6%
PALMETTO	390	427	-8.6%	458	-14.8%	369	5.9%	442	-11.8%
SANTA CLARA	364	363	0.3%	422	-13.6%	350	4.0%	431	-15.4%
SOUTH MIAMI	1,045	1,004	4.0%	1,256	-16.8%	950	9.9%	1,332	-21.6%
TRI-RAIL	610	565	7.9%	614	-0.7%	585	4.2%	606	0.7%
UNIVERSITY	783	837	-6.5%	714	9.6%	630	24.3%	735	6.5%
VIZCAYA	576	511	12.8%	622	-7.4%	555	3.9%	613	-6.0%
TOTAL	22,001	20,180	9.0%	26,714	-17.6%	21,187	3.8%	27,146	-19.0%

METRORAIL AVERAGE SUNDAY BOARDINGS BY STATION

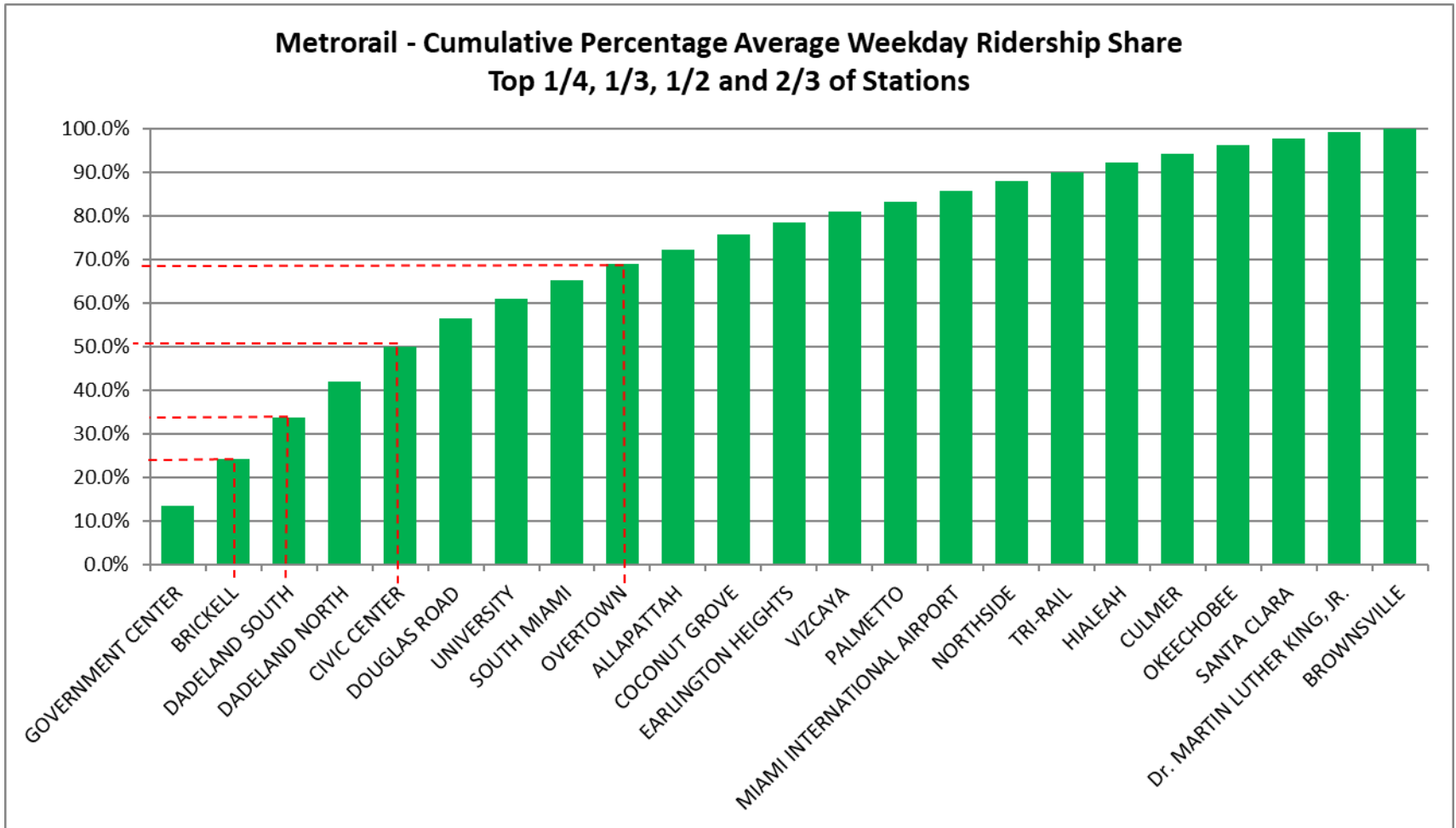
Sundays	Average Sunday	Average Sunday	Percent Change	Average Sunday	Percent Change	Average Sunday	Percent Change	Average Sunday	Percent Change
STATIONS	Feb-24	Feb-23	YOY	Feb-20	Current vs Feb-20	Jan-24	MOM	Feb-19	YO4/5Y
ALLAPATTAH	622	643	-3.2%	791	-21.3%	607	2.4%	772	-19.4%
BRICKELL	1,877	1,886	-0.5%	2,379	-21.1%	2,040	-8.0%	2,210	-15.0%
BROWNSVILLE	203	290	-30.0%	406	-49.9%	201	1.2%	441	-53.9%
CIVIC CENTER	484	563	-14.0%	791	-38.8%	482	0.4%	813	-40.5%
COCONUT GROVE	614	543	13.0%	838	-26.8%	683	-10.1%	785	-21.8%
CULMER	339	326	3.8%	616	-45.0%	357	-5.1%	533	-36.5%
DADELAND NORTH	918	990	-7.3%	1,685	-45.6%	1,144	-19.8%	1,511	-39.3%
DADELAND SOUTH	1,473	1,486	-0.9%	2,210	-33.4%	1,632	-9.7%	2,060	-28.5%
DOUGLAS ROAD	884			1,090	-18.9%	887	-0.4%	1,073	-17.6%
DR. MARTIN LUTHER KING, JR.	307	345	-11.2%	506	-39.4%	321	-4.4%	447	-31.4%
EARLINGTON HEIGHTS	558	553	0.9%	799	-30.2%	548	1.7%	734	-24.0%
GOVERNMENT CENTER	2,115	2,371	-10.8%	4,044	-47.7%	2,745	-22.9%	2,943	-28.1%
HIALEAH	362	429	-15.5%	472	-23.3%	360	0.7%	497	-27.1%
MIAMI INTERNATIONAL AIRPORT	831	1,010	-17.7%	1,343	-38.1%	990	-16.1%	1,286	-35.4%
NORTHSIDE	521	622	-16.1%	653	-20.1%	565	-7.7%	721	-27.7%
OKEECHOBEE	257	220	17.1%	273	-5.9%	255	1.1%	261	-1.2%
OVERTOWN / ARENA	534	431	23.7%	544	-2.0%	554	-3.7%	491	8.6%
PALMETTO	239	247	-3.1%	336	-28.8%	265	-9.8%	272	-11.9%
SANTA CLARA	211	240	-12.2%	280	-24.7%	229	-7.9%	278	-24.3%
SOUTH MIAMI	689	703	-2.0%	987	-30.2%	744	-7.4%	945	-27.1%
TRI-RAIL	361	403	-10.5%	528	-31.6%	369	-2.1%	517	-30.2%
UNIVERSITY	482	555	-13.1%	608	-20.8%	524	-8.1%	480	0.5%
VIZCAYA	364	395	-8.0%	524	-30.6%	453	-19.6%	422	-13.9%
TOTAL	15,242	15,248	0.0%	22,701	-32.9%	16,952	-10.1%	20,490	-25.6%

METRORAIL TOTAL MONTHLY BOARDINGS BY STATION

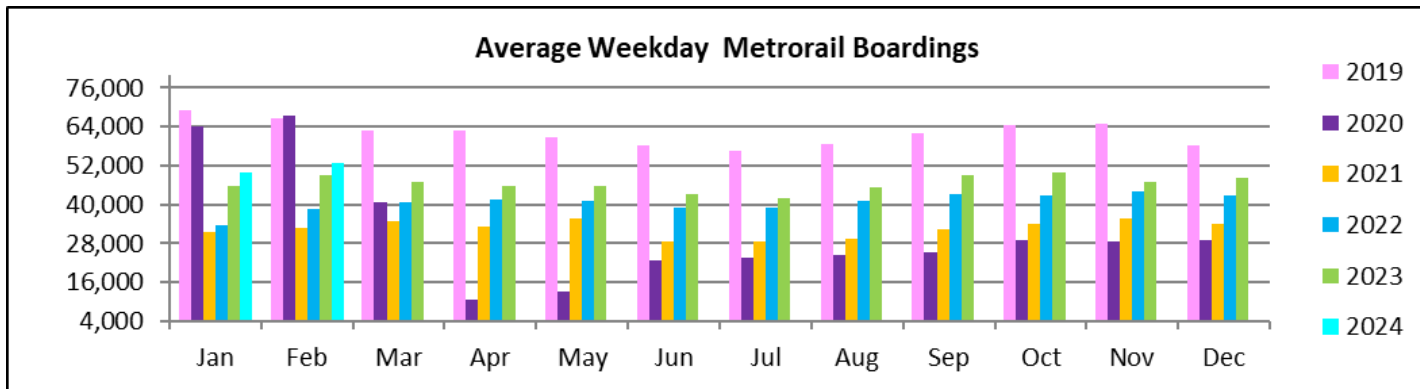
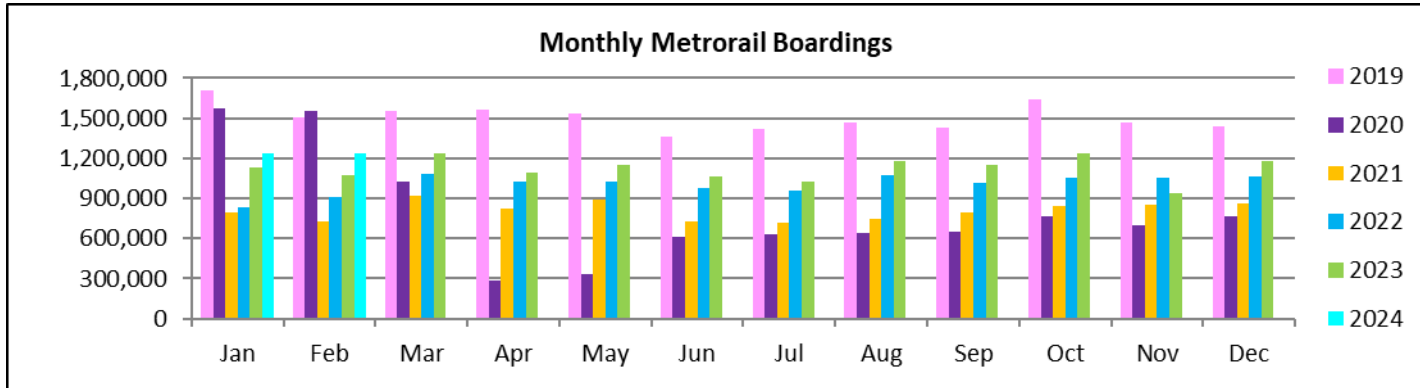
Monthly Totals	Total Month	Total Month	Percent Change	Total Month	Percent Change	Total Month	Percent Change	Total Month	Percent Change
STATIONS	Feb-24	Feb-23	YOY	Feb-20	Current vs Feb-20	Jan-24	MOM	Feb-19	YO4/5Y
ALLAPATTAH	43,045	39,099	10.1%	46,868	-8.2%	42,559	1.1%	44,352	-2.9%
BRICKELL	137,776	123,428	11.6%	152,259	-9.5%	136,256	1.1%	143,998	-4.3%
BROWNSVILLE	12,422	17,183	-27.7%	21,285	-41.6%	12,674	-2.0%	21,157	-41.3%
CIVIC CENTER	90,903	87,916	3.4%	128,921	-29.5%	89,857	1.2%	123,289	-26.3%
COCONUT GROVE	42,945	29,819	44.0%	43,580	-1.5%	42,211	1.7%	41,323	3.9%
CULMER	24,675	23,937	3.1%	33,497	-26.3%	25,298	-2.5%	30,535	-19.2%
DADELAND NORTH	99,058	87,897	12.7%	132,894	-25.5%	99,896	-0.8%	133,234	-25.7%
DADELAND SOUTH	118,318	103,434	14.4%	162,416	-27.2%	117,845	0.4%	160,580	-26.3%
DOUGLAS ROAD	79,221	2,121	3635.1%	82,141	-3.6%	68,819	15.1%	86,015	-7.9%
DR. MARTIN LUTHER KING, JR.	19,033	20,073	-5.2%	27,980	-32.0%	19,956	-4.6%	26,980	-29.5%
EARLINGTON HEIGHTS	36,028	31,901	12.9%	40,697	-11.5%	36,117	-0.2%	39,312	-8.4%
GOVERNMENT CENTER	164,409	158,292	3.9%	243,414	-32.5%	169,505	-3.0%	235,727	-30.3%
HIALEAH	27,504	28,253	-2.7%	29,516	-6.8%	26,961	2.0%	31,858	-13.7%
MIAMI INTERNATIONAL AIRPORT	32,242	34,166	-5.6%	46,115	-30.1%	38,097	-15.4%	44,018	-26.8%
NORTHSIDE	29,722	32,674	-9.0%	36,127	-17.7%	34,145	-13.0%	35,377	-16.0%
OKEECHOBEE	23,576	20,545	14.8%	26,026	-9.4%	22,842	3.2%	26,012	-9.4%
OVERTOWN / ARENA	45,277	36,643	23.6%	49,911	-9.3%	45,883	-1.3%	46,508	-2.6%
PALMETTO	28,453	28,159	1.0%	33,944	-16.2%	28,508	-0.2%	32,875	-13.5%
SANTA CLARA	18,727	16,618	12.7%	19,245	-2.7%	18,993	-1.4%	18,265	2.5%
SOUTH MIAMI	54,171	48,455	11.8%	69,412	-22.0%	52,606	3.0%	68,629	-21.1%
TRI-RAIL	28,307	26,648	6.2%	29,120	-2.8%	29,177	-3.0%	27,637	2.4%
UNIVERSITY	53,938	48,478	11.3%	61,253	-11.9%	43,544	23.9%	55,832	-3.4%
VIZCAYA	30,566	27,052	13.0%	32,497	-5.9%	31,601	-3.3%	27,945	9.4%
TOTAL	1,240,316	1,072,791	15.6%	1,549,118	-19.9%	1,233,350	0.6%	1,501,458	-17.4%

(†) A transition from Nextfare (faregate) data to a video camera system at all Rail stations was made necessary by the Better Bus Network launch on 11/13/2023 and its attendant free fares. This resulted in data gaps in Dec-23; NextFare data from the faregate resumed on New year's Day 2024.

METRORAIL CUMULATIVE PERCENTAGE RIDERSHIP SHARE



TOTAL MONTHLY AND AVERAGE WEEKDAY RIDERSHIP YEAR OVER YEAR COMPARISON CHARTS – METRORAIL

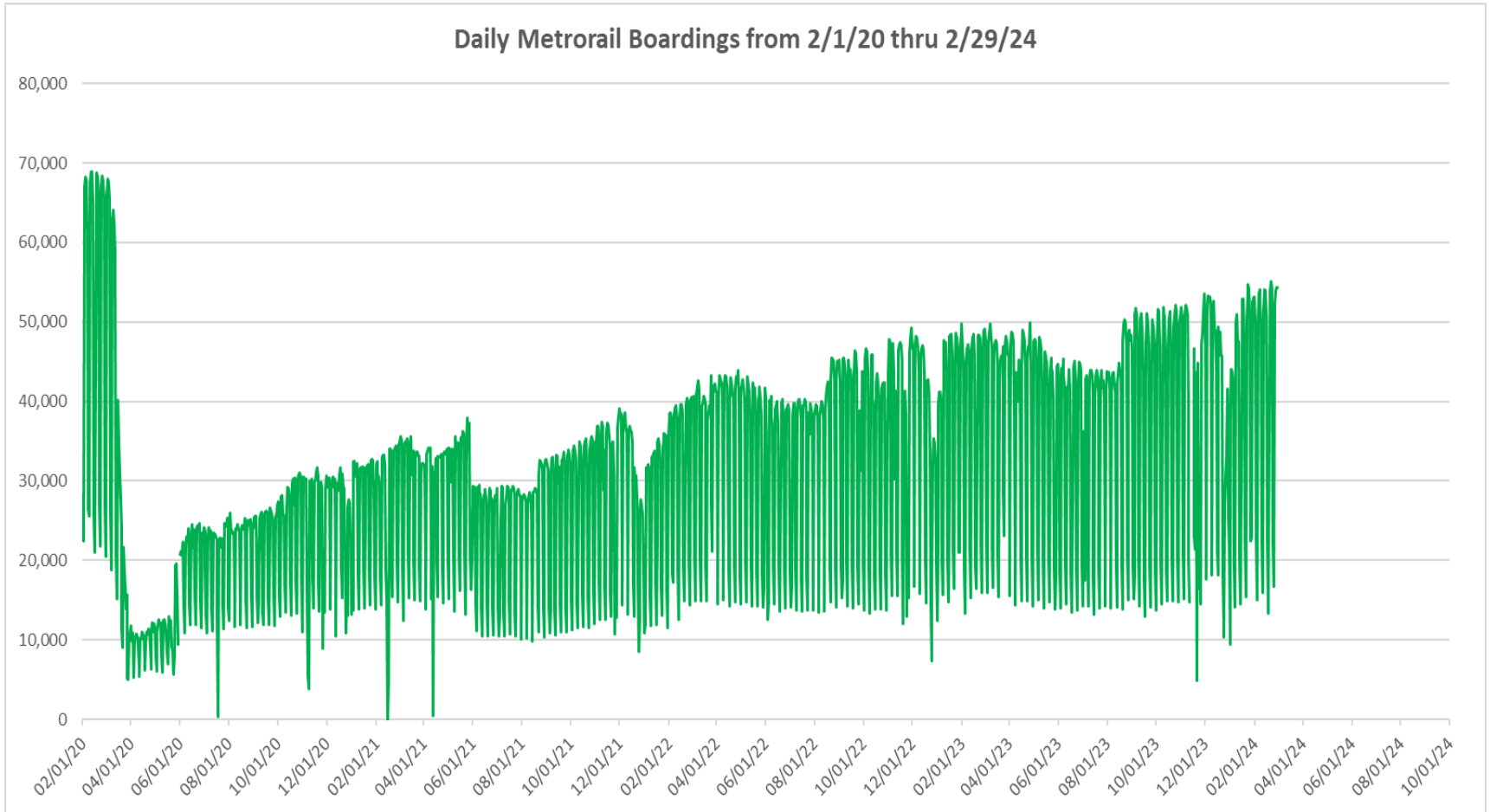


**“TOP 5 / BOTTOM 5” RAIL STATIONS AVERAGE WEEKDAY RIDERSHIP PERFORMANCE
YEAR OVER YEAR COMPARISONS**

Station	Feb-24	Feb-23	Absolute Delta (1)	Percent Delta
DOUGLAS ROAD	3,406	2,121	1,285	60.6%
COCONUT GROVE	1,751	1,223	528	43.2%
DADELAND SOUTH	5,034	4,556	478	10.5%
BRICKELL	5,758	5,386	372	6.9%
DADELAND NORTH	4,356	3,993	364	9.1%
BROWNSVILLE	501	719	-218	-30.3%
NORTHSIDE	1,191	1,358	-167	-12.3%
MIAMI INTERNATIONAL AIRPORT	1,224	1,323	-99	-7.5%
Dr. MARTIN LUTHER KING, JR.	776	848	-72	-8.5%
HIALEAH	1,153	1,219	-66	-5.4%

- (1) Averages rounded to the nearest boarding.
- (2) As a result of the SARS-CoV-2 pandemic, rides were fare-free beginning March 22, 2020, leading to the use of a video camera counter system from that date going forward. Fares were reinstated June 1, 2021, and ridership data from the faregate system rather than the video cameras resumed. Video camera use was reinstated a second time, for the launch of the Better Bus Network on 11/13/2023, and its attendant free fares. NextFare faregate data resumed on New Year's Day 2024.

DAILY METRORAIL RIDERSHIP SINCE FEBRUARY 1, 2020



- (1) There was no Metrobus, Metrorail and Metromover service on 5/31/20, as a safety precaution, and no service for any of the four modes on 9/28/22 as a result of Hurricane Ian..
- (2) The dip at the start of the second week of December 2020 is due to Hurricane Eta; these are *raw data* from the Unleash Live contractor AI video system.
- (3) The dip on 4/13/21 is due to a loss of connectivity at all stations, affecting a few stations over the next two days as well; a similar loss of connectivity is seen on 11/21/23.
- (4) The reduction seen beginning 6/1/21 is partly due to the resumption of fares and partly the result of resuming reporting Cubic faregate data rather than video camera counts.
- (5) As a result of free fares to launch the Better Bus Network, faregates are open beginning 11/13/23, and Unleash Live AI video system ridership counts are reported starting 11/17/23.
- (6) Periodic (weekly) variations are prominent, since weekday ridership is almost always significantly higher than weekend or holiday ridership; a few low-count days are due to system outages, often associated with construction or renovation work..

METRORAIL PARKING PATRONAGE SUMMARY February 2024

PARK-RIDE LOT	ACTUAL CAPACITY (1)	ACTUAL OCCUPANCY (2)	PERCENT OCCUPANCY
DADELAND SOUTH	1,260	830	66%
DADELAND NORTH	1,963	870	44%
SOUTH MIAMI	1,081	299	28%
UNIVERSITY	260	218	84%
COCONUT GROVE	100	10	10%
VIZCAYA	120	45	37%
CULMER	25	17	67%
SANTA CLARA	61	38	62%
ALLAPATTAH	74	7	10%
EARLINGTON HEIGHTS	361	145	40%
BROWNSVILLE	100	72	72%
DR. MARTIN LUTHER KING JR. (MDT) (*)	62	0	0%
DR. MARTIN LUTHER KING JR. (GARAGE) (*)	631	0	0%
NORTHSIDE	100	77	77%
HIALEAH	338	42	12%
OKEECHOBEE	1,398	143	10%
PALMETTO	700	151	22%
TOTAL	8,856	2,963	33%

- (1) Number of spaces could vary each week; shown are available spaces during final week of month, as submitted by DTPW Safety & Security office.
- (2) All sampled occupancy data provided by DTPW Safety & Security office; calculations are revisions to those submitted by that entity.
- (3) Daily averages rounded to nearest unit, with fewer counts at some stations than others, depending on staffing levels; calculations are based on sampled counted days only per raw data submitted, with resulting average daily occupancy shown.
- (*) Closed throughout the month.

Metromover



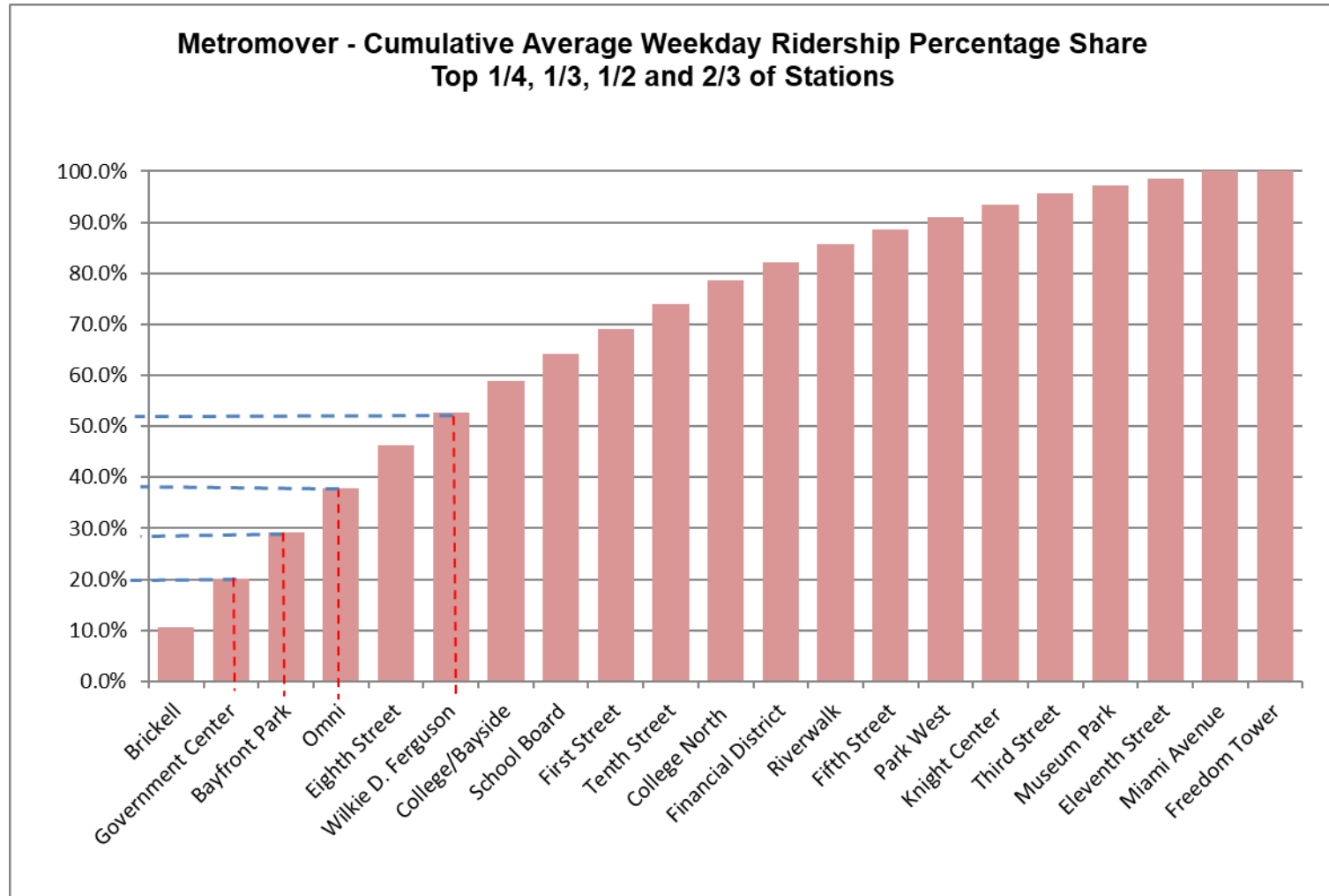
February 2024

METROMOVER MONTHLY AND AVERAGE DAILY BOARDINGS BY STATION

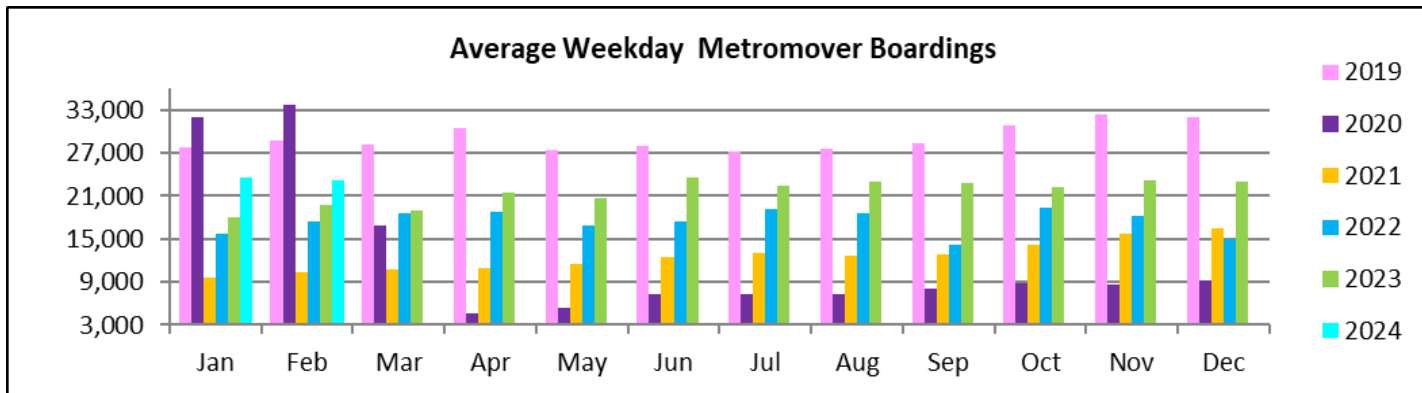
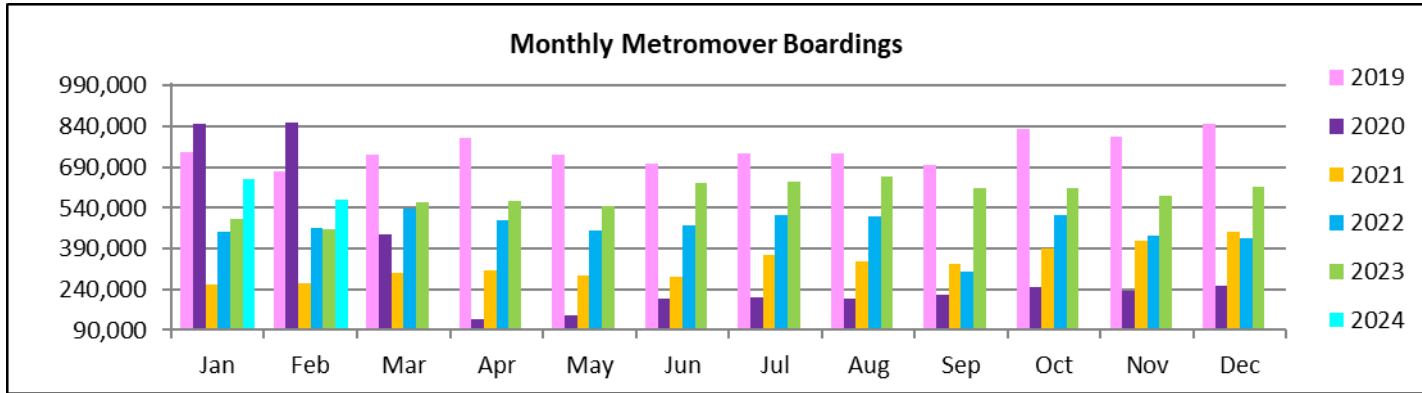
	Average Weekday	Average Weekday	Percent Change	Average Saturday	Average Saturday	Percent Change	Average Sunday	Average Sunday	Percent Change	Total Monthly	Total Monthly	Percent Change
STATIONS	Feb-24	Feb-23	24 vs 23	Feb-24	Feb-23	24 vs 23	Feb-24	Feb-23	24 vs 23	Feb-24	Feb-23	24 vs 23
School Board	1,252	317	295.2%	845	303	178.8%	938	287	227.2%	33,432	8,729	283.0%
Omni	1,991	1,880	5.9%	1,561	1,481	5.4%	1,408	1,365	3.2%	53,330	48,573	9.8%
Museum Park	364	375	-3.0%	569	714	-20.3%	506	480	5.3%	12,128	12,346	-1.8%
Eleventh Street	335	297	12.7%	296	292	1.5%	297	277	7.3%	9,402	8,200	14.7%
Park West	596	786	-24.2%	490	678	-27.8%	530	564	-6.0%	16,490	20,623	-20.0%
Freedom Tower												
Government Center	2,242	3,003	-25.3%	1,875	1,982	-5.4%	1,363	1,903	-28.4%	21,177	30,261	-30.0%
Miami Avenue	314	321	-2.3%	198	291	-31.8%	229	249	-8.0%	6,912	4,595	50.4%
Third Street	524	275	90.3%	508	243	109.2%	478	219	118.5%	14,826	7,287	103.5%
Knight Center	537	627	-14.4%	258	429	-39.9%	253	336	-24.6%	13,151	15,432	-14.8%
Bayfront Park	2,122	2,147	-1.2%	1,385	1,595	-13.1%	1,275	1,465	-12.9%	54,635	54,832	-0.4%
First Street	1,136			832			880			30,644		
College/Bayside	1,450	1,771	-18.1%	1,161	1,524	-23.9%	1,188	1,281	-7.3%	39,763	46,237	-14.0%
College North	1,090	1,029	6.0%	456	676	-32.5%	441	557	-20.9%	26,026	25,194	3.3%
Wilkie D. Ferguson	1,459			863			778			36,908		
Riverwalk	821	514	59.8%	477	364	31.0%	487	347	40.5%	20,948	12,931	62.0%
Fifth Street	644	498	29.3%	426	429	-0.7%	404	326	23.9%	16,687	12,906	29.3%
Eighth Street	1,979	1,577	25.5%	1,472	1,561	-5.7%	1,381	1,213	13.9%	52,939	42,397	24.9%
Tenth Street	1,122	1,099	2.1%	692	843	-17.8%	730	725	0.6%	28,998	28,030	3.5%
Brickell	2,444	2,125	15.0%	1,326	1,712	-22.6%	1,303	1,478	-11.8%	61,165	54,744	11.7%
Financial District	850	1,083	-21.5%	390	634	-38.5%	391	539	-27.3%	20,681	25,947	-20.3%
TOTAL	23,272	19,724	18.0%	16,078	15,750	2.1%	15,256	13,606	12.1%	570,242	459,264	24.2%

(1) Several Metromover stations were closed for construction during the 2023-2024 period, due to installation of new equipment and construction work.

METROMOVER CUMULATIVE PERCENTAGE RIDERSHIP SHARE



TOTAL MONTHLY AND AVERAGE WEEKDAY RIDERSHIP YEAR OVER YEAR COMPARISON CHARTS – METROMOVER



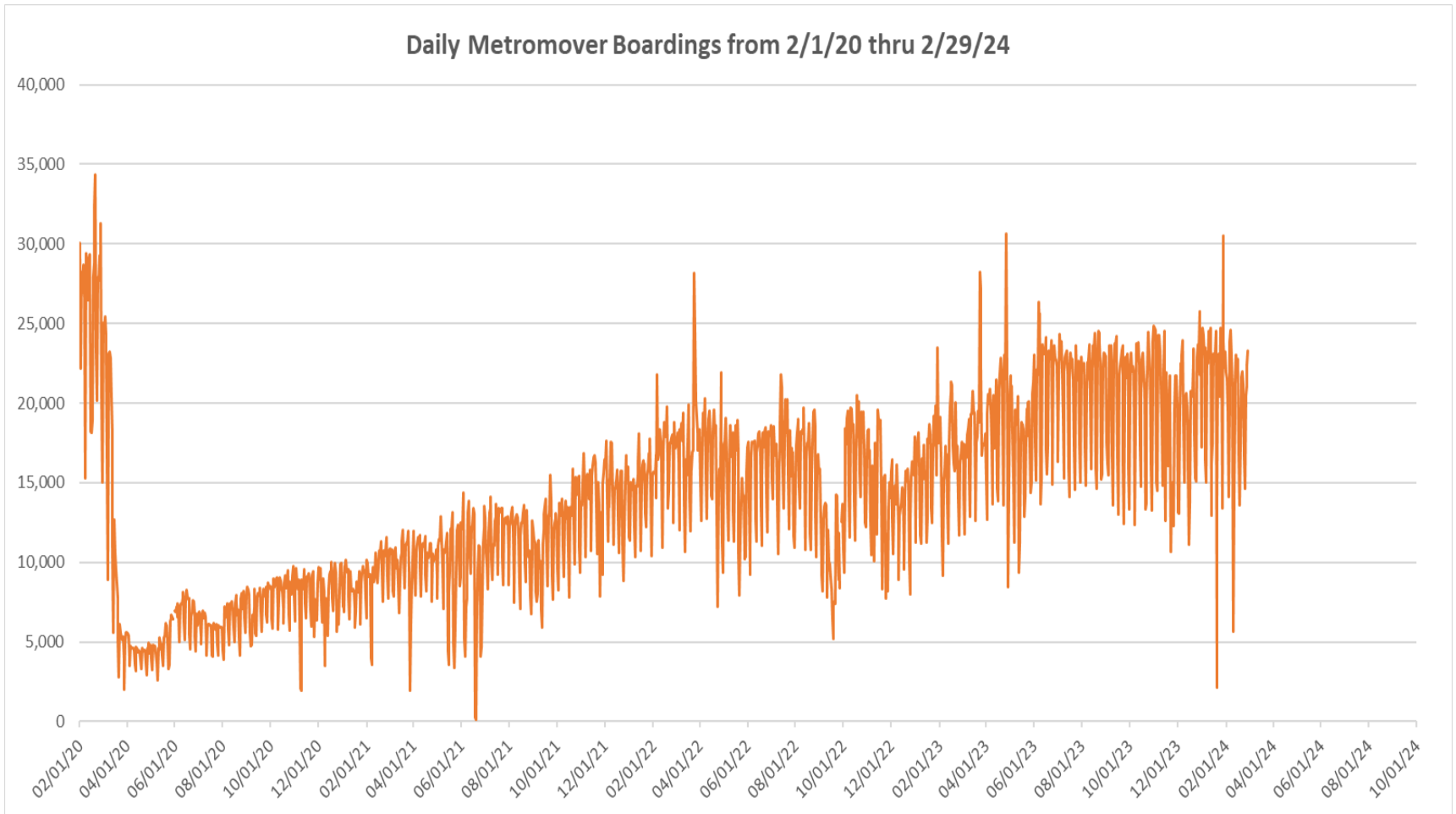
**“TOP 5 / BOTTOM 5” MOVER STATIONS AVERAGE WEEKDAY RIDERSHIP PERFORMANCE
YEAR OVER YEAR COMPARISONS**

Station	Feb-24	Feb-23	Absolute Delta (1)	Percent Delta
School Board	1,252	317	935	295.2%
Eighth Street	1,979	1,577	402	25.5%
Brickell	2,444	2,125	319	15.0%
Riverwalk	821	514	307	59.8%
Third Street	524	275	249	90.3%

Government Center	2,242	3,003	-761	-25.3%
College/Bayside	1,450	1,771	-321	-18.1%
Financial District	850	1,083	-233	-21.5%
Park West	596	786	-190	-24.2%
Knight Center	537	627	-90	-14.4%

(1) Averages rounded to the nearest boarding.

DAILY METROMOVER RIDERSHIP SINCE FEBRUARY 1, 2020



- (1) There was no Metrobus, Metrorail and Metromover service on 5/31/20, as a safety precaution, and no service for any of the four modes on 9/28/22 as a result of Hurricane Ian..
- (2) The dip at the start of the second week of December 2020 is due to Hurricane Eta; these are *raw data* from the UTA contractor APC system. Other more recent dips are due to various station closures (mostly on weekends) for system maintenance purposes.
- (3) Periodic (weekly) variations are prominent, since weekday ridership is almost always significantly higher than weekend or holiday ridership; a few low-count days are due to system outages, often associated with construction or renovation work.

Special Transportation Services

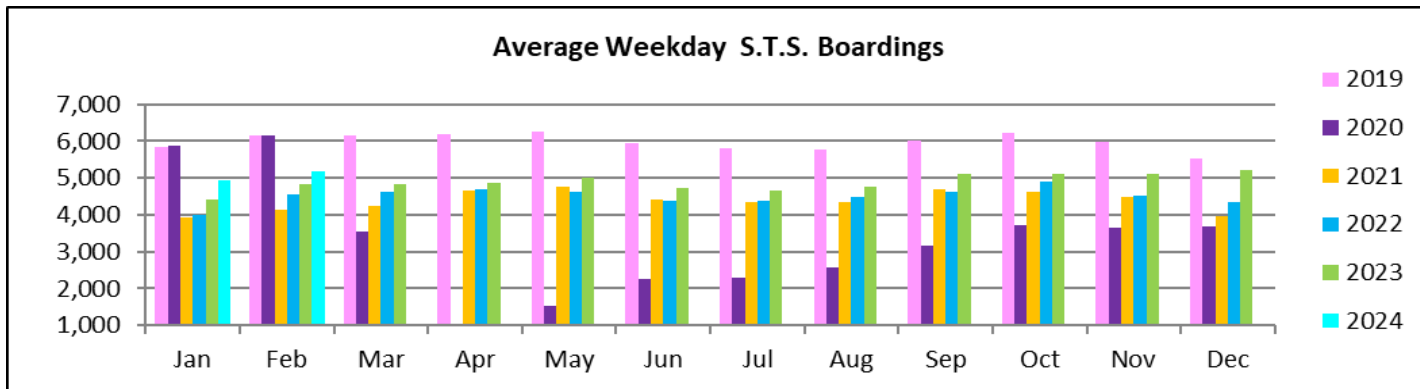
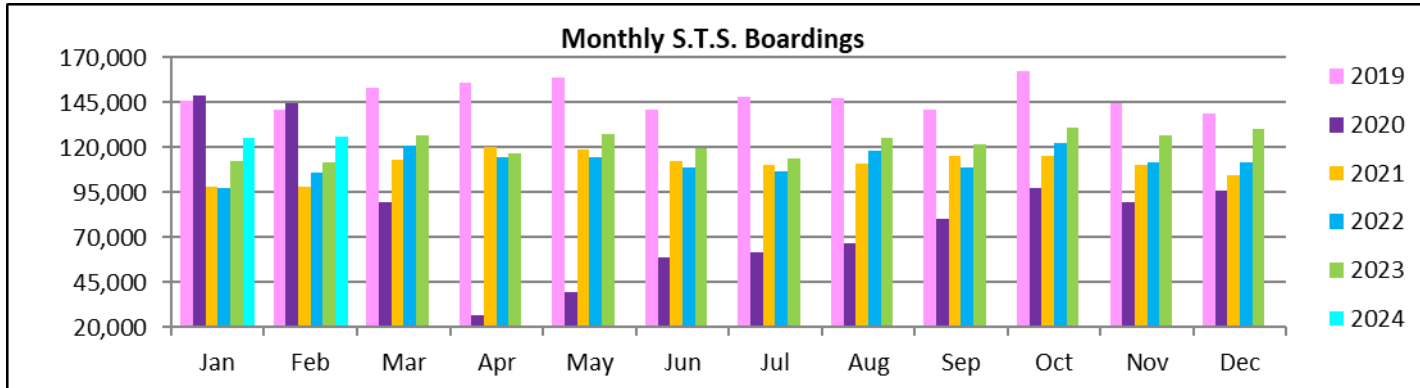


STS MONTHLY AND AVERAGE DAILY BOARDINGS
February 2024

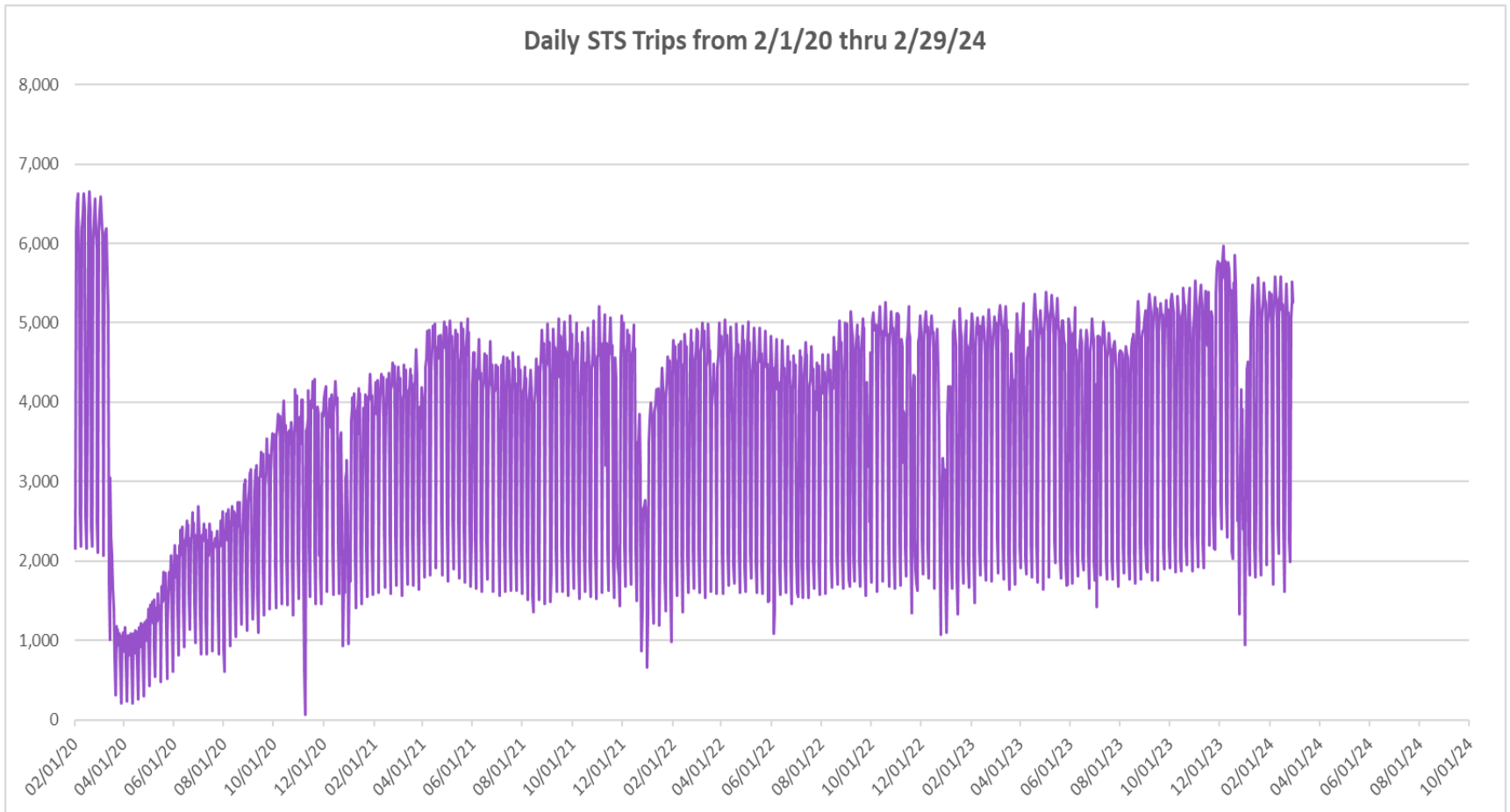
Measure	timeline	Ambulatory	Wheelchair	Total Clients (*)
Average Weekday	Feb-24	4,364	817	5,181
Average Saturday	Feb-24	2,013	366	2,378
Average Sunday	Feb-24	1,527	328	1,855
Total Monthly	Feb-24	105,806	19,926	125,732
Average Weekday	Feb-23	4,031	797	4,827
Average Saturday	Feb-23	1,728	375	2,103
Average Sunday	Feb-23	1,425	274	1,699
Total Monthly	Feb-23	93,220	18,528	111,748
Average Weekday	Feb-22	3,785	777	4,562
Average Saturday	Feb-22	1,702	366	2,068
Average Sunday	Feb-22	1,269	278	1,547
Total Monthly	Feb-22	87,592	18,114	105,706
% Change Current vs. February 2023 Weekday		8.3%	2.5%	7.3%
% Change Current vs. February 2023 Saturday		16.5%	-2.5%	13.1%
% Change Current vs. February 2023 Sunday		7.2%	20.0%	9.2%
% Change Current vs. February 2023 Month Total		13.5%	7.5%	12.5%
% Change Current vs. February 2022 Weekday		15.3%	5.1%	13.6%
% Change Current vs. February 2022 Saturday		18.2%	-0.1%	15.0%
% Change Current vs. February 2022 Sunday		20.3%	18.2%	19.9%
% Change Current vs. February 2022 Month Total		20.8%	10.0%	18.9%

(*) Trip count data provided by STS contractor.

TOTAL MONTHLY AND AVERAGE WEEKDAY RIDERSHIP YEAR OVER YEAR COMPARISON CHARTS – SPECIAL TRANSPORTATION SERVICES (S.T.S.)

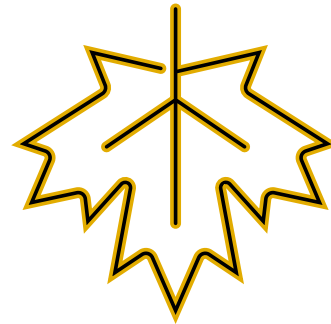
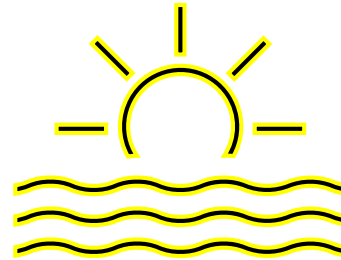
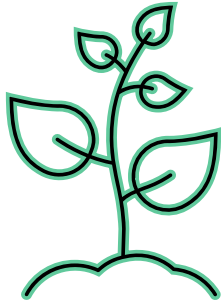


DAILY STS RIDERSHIP SINCE FEBRUARY 1, 2020

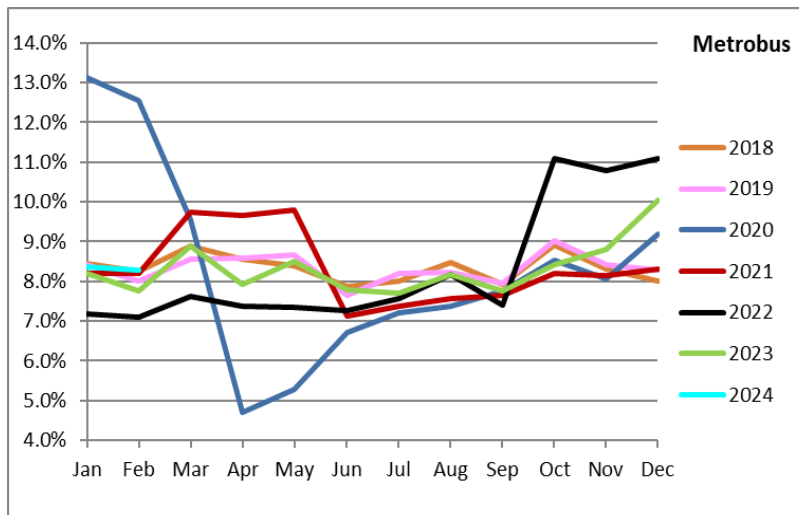
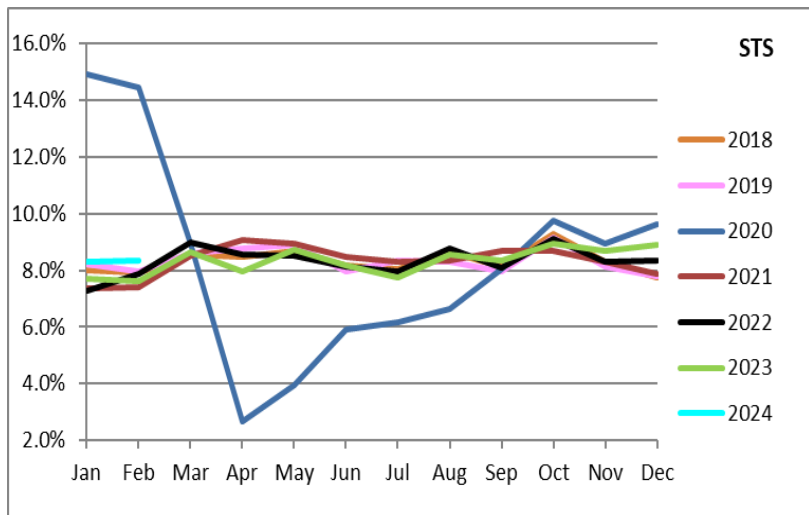
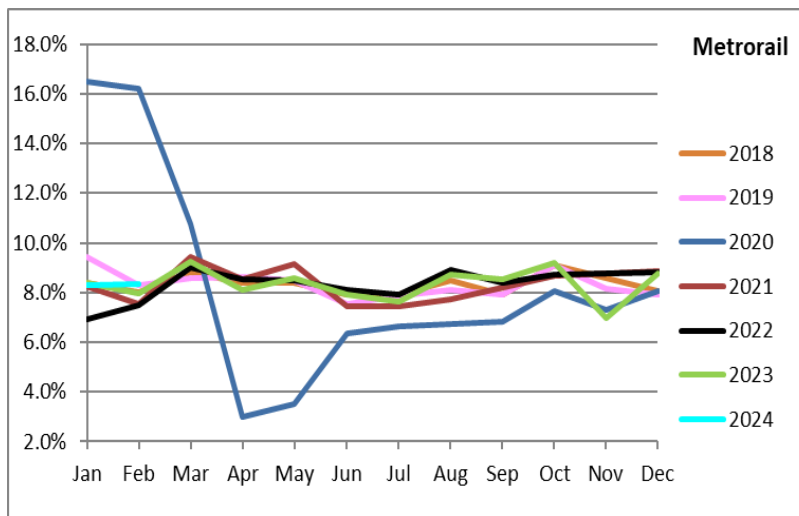
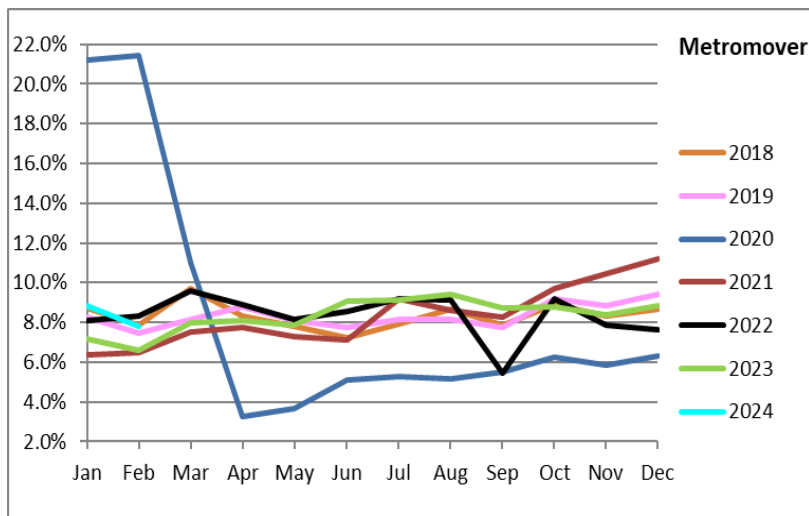


- (1) There was no service (for any of the four modes) on 9/28/22 as a result of Hurricane Ian.
- (2) The dip at the start of the second week of December 2020 is due to Hurricane Eta.
- (3) Periodic (weekly) variations are prominent, since weekday ridership is almost always significantly higher than weekend or holiday ridership.

Ridership Seasonality



RIDERSHIP SEASONALITY – PERCENT RIDERSHIP SHARE BY MONTH AND CALENDAR YEAR FOR EACH MODE



Note: the prominent dips seen in the fall of 2017 and beginning in the spring of 2020 are due to Hurricane Irma and the SARS-CoV-2 pandemic, respectively. Reductions in Bus and Rail ridership share seen beginning in June 2021 are due to reinstatement of fares as well changes in reporting tools and datasets, as discussed earlier in this report. The prominent peaks on Metrobus seen beginning October 2022 are due from a changeover from farebox counts to ridership obtained from new automatic passenger counter (APC) technology, while the pronounced rise beginning November 2023 can be attributed to the launch of the Better Bus Network and the attendant free fares.