



## TRANSPORTATION AND PUBLIC WORKS

### RIDERSHIP TECHNICAL REPORT

*Division of Performance Analysis*



May 2024

# Table of Contents

<i>Table of Contents</i>	2-3
<b>All Modes Overview</b>	<b>4</b>
Total Monthly Weekday, Saturday and Sunday Monthly Boardings By Mode	5
Average Weekday, Saturday and Sunday Boardings by Mode	6
Metrobus Total Monthly Ridership Comparisons by Fiscal Year	7
Metrorail Total Monthly Ridership Comparisons by Fiscal Year	8
Metromover Total Monthly Ridership Comparisons by Fiscal Year	9
STS Total Monthly Ridership Comparisons by Fiscal Year	10
All-Modes Combined Total Monthly Ridership Comparisons By Fiscal Year	11
All Modes Combined Total Monthly and Average Weekday Ridership – Year over Year Comparison Charts	12
Average Weekday Ridership – Modal Splits	13
Daily Ridership for All Modes Combined since 2/1/20	14
 <b>Metrobus</b>	 <b>15</b>
Better Bus Network (BBN, 11/13/2023 Lineup) Bus Route Changes, Pt 1 and Pt 2	16-17
Metrobus Average Weekday Boardings by Route	18-20
Metrobus Average Saturday Boardings by Route	21-22
Metrobus Average Sunday Boardings by Route	23-24
Metrobus Monthly Total Boardings by Route	25-27
Bus Ridership by Route Service Type Lineups Comparison (month-over-month & month-over-7 months)	28-31
Bus Routes as Ranked by Percentage of Average Weekday Ridership	32
Metrobus Cumulative Percentage Average Weekday Ridership Share by Route (Top 75%)	33
Total Monthly and Average Weekday Bus Ridership – Year over Year Comparison Charts	34
Bus “Top 10 / Bottom 10” Bus Routes Average Weekday Ridership Performance – Month-over-Month Comparisons	35
Bus “Top 10 / Bottom 10” Bus Routes Sets Average Weekday Ridership Performance – Year-over-Year Comparisons	36
Bus “Top 10 / Bottom 10” Bus Routes Sets Average Weekday Ridership Performance – Month-over-7 Month Comparisons	37
Daily Metrobus Ridership since 2/1/20	38
Metrobus Parking Patronage Summary	39

## Table of Contents (continued)

<b>Metrorail</b>	<b>40</b>
Metrorail Average Weekday Boardings by Station	41
Metrorail Average Saturday Boardings by Station	42
Metrorail Average Sunday Boardings by Station	43
Metrorail Total Monthly Boardings by Station	44
Metrorail Cumulative Percentage Average Weekday Ridership Share	45
Total Monthly and Average Weekday Rail Ridership – Year over Year Comparison Charts	46
“Top 5 / Bottom 5” Stations Average Weekday Ridership Performance	47
Daily Metrorail Ridership since 2/1/20	48
Metrorail Parking Patronage Summary	49
 <b>Metromover</b>	 <b>50</b>
Monthly and Average Daily Mover Boardings by Station	51
Metromover Cumulative Percentage Average Weekday Ridership Share	52
Total Monthly and Average Weekday Mover Ridership – Year over Year Comparison Charts	53
“Top 5 / Bottom 5” Stations Average Weekday Ridership Performance	54
Daily Metromover Ridership since 2/1/20	55
 <b>Special Transportation Services (STS)</b>	 <b>56</b>
STS Monthly and Average Daily Boardings	57
Total Monthly and Average Weekday STS Ridership – Year over Year Comparison Charts	58
Daily STS Ridership since 2/1/20	59
 <b>Ridership Seasonality</b>	 <b>60</b>
Ridership Seasonality – Percent Ridership Share by Month and Calendar Year for Each Mode	61

## All Modes Overview



**TOTAL MONTHLY WEEKDAY, SATURDAY AND SUNDAY BOARDINGS BY MODE**  
**May 2024**

TRAVEL MODE	MONTH'S TOTAL WEEKDAYS RIDERSHIP	MONTH'S TOTAL SATURDAYS RIDERSHIP	MONTH'S TOTAL SUNDAYS RIDERSHIP	TOTAL MONTHLY RIDERSHIP	% CHANGE vs May 2023 TOTAL MONTH RIDERSHIP
<b>METROBUS (1)</b>	4,339,382	505,489	463,840	5,308,711	7.2%
<b>METRORAIL (2)</b>	1,145,455	85,398	83,259	1,314,112	14.1%
<b>METROMOVER</b>	465,123	60,937	71,172	597,232	9.0%
<b>STS PARATRANSIT (3)</b>	118,116	9,720	10,122	137,958	8.0%
<b>TOTAL</b>	<b>6,068,076</b>	<b>661,544</b>	<b>628,393</b>	<b>7,358,013</b>	<b>8.5%</b>

(1) Bus ridership reporting through automatic passenger counters coupled with a new enhanced sensor system resumed on October 1, 2022.

(2) Metrorail fares resumed on June 1, 2021, following a 14-month period of fare-free rides as a result of the SARS-CoV-2 pandemic. The NextFare System faregate data replaced the video data as ridership data of record starting on that date, until free fares were reinstated for the Better Bus Network launch on 11/13/23. The NextFare System faregate data collection and reporting resumed on New Year's Day 2024.

(3) Paratransit ridership data as reported by the contractor and subsequently audited by the Department.

**AVERAGE WEEKDAY, SATURDAY AND SUNDAY BOARDINGS BY MODE**  
**May 2024**

<b>Travel Mode</b>	<b>Average Weekday</b>	<b>Average Saturday</b>	<b>Average Sunday</b>	<b>% Change May 2023 Weekday</b>	<b>% Change May 2023 Saturday</b>	<b>% Change May 2023 Sunday</b>
<b>METROBUS</b>	197,313	126,372	92,768	6.8%	12.0%	5.5%
<b>METRORAIL</b>	52,199	21,350	15,843	14.1%	6.1%	9.1%
<b>METROMOVER</b>	21,148	15,234	14,355	1.7%	-0.8%	2.4%
<b>STS PARATRANSIT</b>	5,369	2,430	2,024	7.1%	14.2%	13.0%
<b>Totals</b>	<b>276,029</b>	<b>165,386</b>	<b>124,990</b>	<b>7.7%</b>	<b>9.9%</b>	<b>5.7%</b>

(\*) Average ridership is calculated and published only for those days and stations or routes with nontrivial amounts of reported data.

## METROBUS TOTAL MONTHLY RIDERSHIP COMPARISONS BY FISCAL YEAR

<b>Bus Month</b>	<b>FY 19</b>	<b>FY 20</b>	<b>Variance 19 to 20</b>	<b>FY 21</b>	<b>FY 22</b>	<b>FY 23</b>	<b>FY 24</b>	<b>Variance 19 to 23</b>	<b>Variance 22 to 23</b>	<b>Variance 19 to 24</b>	<b>Variance 23 to 24</b>
<b>Oct</b>	4,554,886	4,507,012	-1.1%	2,805,139	3,081,157	4,679,725	4,912,151	2.7%	51.9%	7.8%	5.0%
<b>Nov</b>	4,245,535	4,197,225	-1.1%	2,651,290	3,056,726	4,549,666	5,135,172	7.2%	48.8%	21.0%	12.9%
<b>Dec</b>	4,081,581	4,126,990	1.1%	3,022,530	3,123,883	4,677,460	5,857,057	14.6%	49.7%	43.5%	25.2%
<b>Jan</b>	4,195,911	4,316,998	2.9%	3,082,746	3,029,055	4,785,128	5,103,257	14.0%	58.0%	21.6%	6.6%
<b>Feb</b>	3,994,019	4,123,083	3.2%	3,076,966	2,995,789	4,526,317	5,053,665	13.3%	51.1%	26.5%	11.7%
<b>Mar</b>	4,266,768	3,136,162	-26.5%	3,660,639	3,218,562	5,183,872	5,461,317	21.5%	61.1%	28.0%	5.4%
<b>Apr</b>	4,291,135	1,544,316	-64.0%	3,625,048	3,105,797	4,618,302	5,548,614	7.6%	48.7%	29.3%	20.1%
<b>May</b>	4,330,922	1,734,609	-59.9%	3,683,343	3,097,574	4,953,197	5,308,711	14.4%	59.9%	22.6%	7.2%
<b>Jun</b>	3,823,863	2,210,725	-42.2%	2,672,570	3,064,059	4,545,050		18.9%	48.3%		
<b>Jul</b>	4,094,906	2,366,749	-42.2%	2,769,907	3,189,994	4,484,458		9.5%	40.6%		
<b>Aug</b>	4,109,613	2,422,014	-41.1%	2,843,552	3,442,006	4,756,063		15.7%	38.2%		
<b>Sep</b>	3,971,220	2,546,923	-35.9%	2,877,110	3,123,572	4,525,426		14.0%	44.9%		
<b>FY Total</b>	<b>49,960,359</b>	<b>37,232,806</b>	<b>-25.5%</b>	<b>36,770,840</b>	<b>37,528,174</b>	<b>56,284,664</b>		<b>12.7%</b>	<b>50.0%</b>		

## METRORAIL TOTAL MONTHLY RIDERSHIP COMPARISONS BY FISCAL YEAR

<b>Rail Month</b>	<b>FY 19</b>	<b>FY 20</b>	<b>Variance 19 to 20</b>	<b>FY 21</b>	<b>FY 22</b>	<b>FY 23</b>	<b>FY 24</b>	<b>Variance 19 to 23</b>	<b>Variance 22 to 23</b>	<b>Variance 19 to 24</b>	<b>Variance 23 to 24</b>
<b>Oct</b>	1,757,225	1,643,166	-6.5%	769,525	844,383	1,053,191	1,237,096	-40.1%	24.7%	-29.6%	17.5%
<b>Nov</b>	1,656,929	1,469,448	-11.3%	699,492	850,881	1,055,066	935,121	-36.3%	24.0%	-43.6%	-11.4%
<b>Dec</b>	1,553,804	1,433,928	-7.7%	769,194	860,436	1,063,096	1,177,272	-31.6%	23.6%	-24.2%	10.7%
<b>Jan</b>	1,708,695	1,576,340	-7.7%	799,119	832,924	1,127,340	1,233,350	-34.0%	35.3%	-27.8%	9.4%
<b>Feb</b>	1,501,458	1,549,118	3.2%	730,792	905,162	1,072,791	1,240,316	-28.6%	18.5%	-17.4%	15.6%
<b>Mar</b>	1,554,851	1,027,319	-33.9%	917,097	1,084,978	1,239,336	1,302,854	-20.3%	14.2%	-16.2%	5.1%
<b>Apr</b>	1,559,446	287,803	-81.5%	827,414	1,027,139	1,087,816	1,336,511	-30.2%	5.9%	-14.3%	22.9%
<b>May</b>	1,531,597	337,696	-78.0%	887,111	1,023,322	1,151,819	1,314,112	-24.8%	12.6%	-14.2%	14.1%
<b>Jun</b>	1,359,966	608,758	-55.2%	723,469	975,477	1,066,861		-21.6%	9.4%		
<b>Jul</b>	1,419,158	632,964	-55.4%	722,159	953,331	1,022,937		-27.9%	7.3%		
<b>Aug</b>	1,463,646	641,275	-56.2%	749,578	1,076,490	1,174,138		-19.8%	9.1%		
<b>Sep</b>	1,427,726	654,244	-54.2%	795,749	1,012,331	1,146,864		-19.7%	13.3%		
<b>FY Total</b>	<b>18,494,501</b>	<b>11,862,059</b>	<b>-35.9%</b>	<b>9,390,699</b>	<b>11,446,854</b>	<b>13,261,255</b>		<b>-28.3%</b>	<b>15.9%</b>		



## METROMOVER TOTAL MONTHLY RIDERSHIP COMPARISONS BY FISCAL YEAR

<b>Mover Month</b>	<b>FY 19</b>	<b>FY 20</b>	<b>Variance 19 to 20</b>	<b>FY 21</b>	<b>FY 22</b>	<b>FY 23</b>	<b>FY 24</b>	<b>Variance 19 to 23</b>	<b>Variance 22 to 23</b>	<b>Variance 19 to 24</b>	<b>Variance 23 to 24</b>
<b>Oct</b>	790,533	831,234	5.1%	250,044	389,065	514,308	614,479	-34.9%	32.2%	-22.3%	19.5%
<b>Nov</b>	735,198	799,632	8.8%	232,422	418,929	439,150	584,887	-40.3%	4.8%	-20.4%	33.2%
<b>Dec</b>	767,239	849,832	10.8%	251,019	450,320	426,073	616,455	-44.5%	-5.4%	-19.7%	44.7%
<b>Jan</b>	746,728	847,773	13.5%	255,968	451,566	498,566	644,639	-33.2%	10.4%	-13.7%	29.3%
<b>Feb</b>	675,160	855,398	26.7%	260,332	465,968	459,264	570,242	-32.0%	-1.4%	-15.5%	24.2%
<b>Mar</b>	737,814	441,200	-40.2%	302,502	535,857	558,396	753,107	-24.3%	4.2%	2.1%	34.9%
<b>Apr</b>	795,696	130,549	-83.6%	310,772	495,982	565,943	640,281	-28.9%	14.1%	-19.5%	13.1%
<b>May</b>	734,645	146,454	-80.1%	292,922	455,120	547,948	597,232	-25.4%	20.4%	-18.7%	9.0%
<b>Jun</b>	701,318	203,637	-71.0%	286,145	477,286	632,423		-9.8%	32.5%		
<b>Jul</b>	739,814	210,596	-71.5%	368,847	512,094	635,954		-14.0%	24.2%		
<b>Aug</b>	739,785	205,995	-72.2%	344,319	508,359	657,267		-11.2%	29.3%		
<b>Sep</b>	699,879	219,696	-68.6%	331,915	305,185	610,810		-12.7%	100.1%		
<b>FY Total</b>	<b>8,863,809</b>	<b>5,741,996</b>	<b>-35.2%</b>	<b>3,487,207</b>	<b>5,465,731</b>	<b>6,546,102</b>		<b>-26.1%</b>	<b>19.8%</b>		

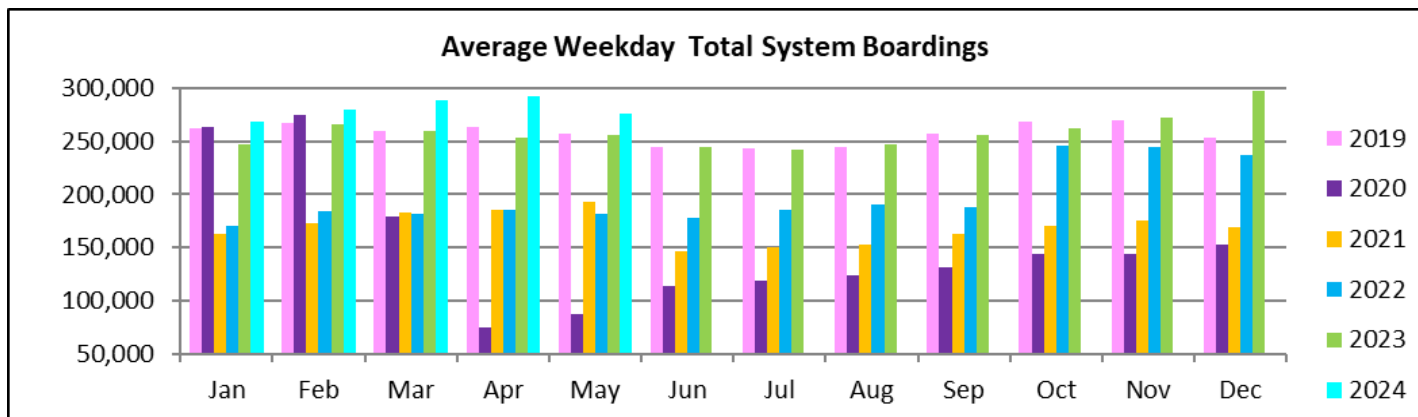
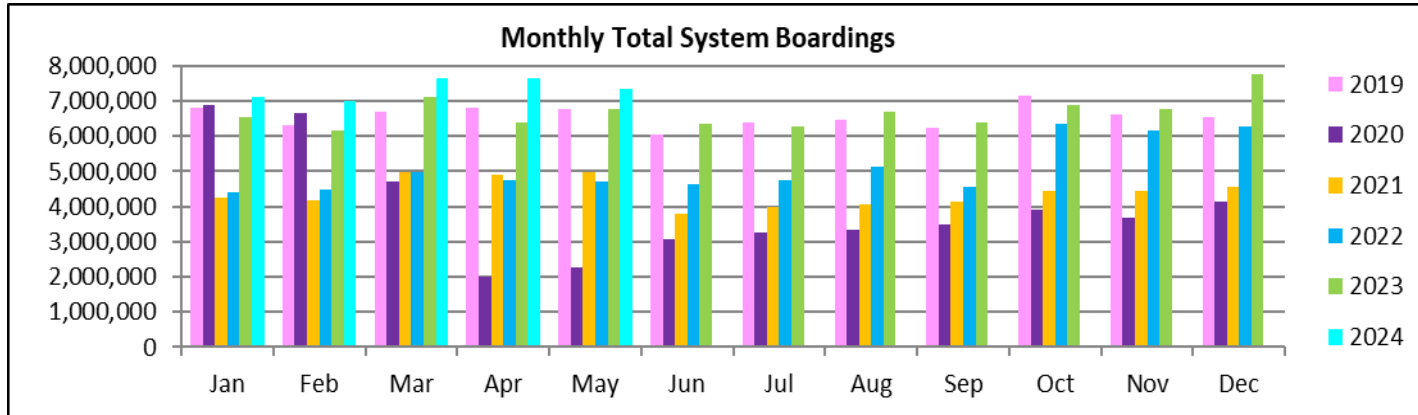
## SPECIAL TRANSPORTATION SERVICES (STS) TOTAL MONTHLY RIDERSHIP COMPARISONS BY FISCAL YEAR

<b>STS Month</b>	<b>FY 19</b>	<b>FY 20</b>	<b>Variance 19 to 20</b>	<b>FY 21</b>	<b>FY 22</b>	<b>FY 23</b>	<b>FY 24</b>	<b>Variance 19 to 23</b>	<b>Variance 22 to 23</b>	<b>Variance 19 to 24</b>	<b>Variance 23 to 24</b>
<b>Oct</b>	162,564	162,704	0.1%	97,388	115,122	122,189	130,958	-24.8%	6.1%	-19.4%	7.2%
<b>Nov</b>	145,653	144,366	-0.9%	89,387	110,289	111,578	127,025	-23.4%	1.2%	-12.8%	13.8%
<b>Dec</b>	136,110	138,642	1.9%	96,366	104,496	112,019	130,093	-17.7%	7.2%	-4.4%	16.1%
<b>Jan</b>	146,268	149,114	1.9%	97,928	97,541	112,632	125,513	-23.0%	15.5%	-14.2%	11.4%
<b>Feb</b>	141,396	144,392	2.1%	98,285	105,706	111,748	125,732	-21.0%	5.7%	-11.1%	12.5%
<b>Mar</b>	153,191	89,634	-41.5%	112,930	120,718	126,819	130,203	-17.2%	5.1%	-15.0%	2.7%
<b>Apr</b>	155,808	26,877	-82.7%	120,122	114,912	116,882	134,677	-25.0%	1.7%	-13.6%	15.2%
<b>May</b>	158,665	39,654	-75.0%	118,636	114,505	127,782	137,958	-19.5%	11.6%	-13.1%	8.0%
<b>Jun</b>	141,320	59,093	-58.2%	112,397	109,054	119,527		-15.4%	9.6%		
<b>Jul</b>	148,232	61,765	-58.3%	110,059	107,188	113,623		-23.3%	6.0%		
<b>Aug</b>	147,331	66,563	-54.8%	110,766	117,941	125,510		-14.8%	6.4%		
<b>Sep</b>	141,387	80,346	-43.2%	115,406	108,788	122,065		-13.7%	12.2%		
<b>FY Total</b>	<b>1,777,925</b>	<b>1,163,150</b>	<b>-34.6%</b>	<b>1,279,670</b>	<b>1,326,260</b>	<b>1,422,374</b>		<b>-20.0%</b>	<b>7.2%</b>		

## ALL-MODES COMBINED TOTAL MONTHLY RIDERSHIP COMPARISONS BY FISCAL YEAR

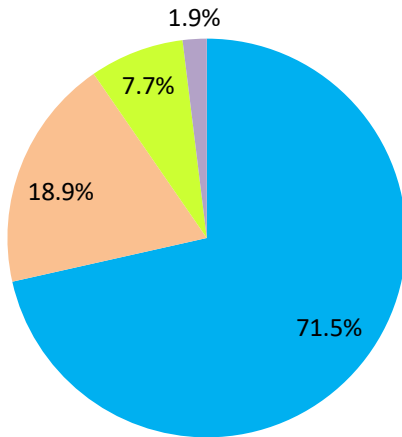
<b>All Modes</b>													
<b>Month</b>	<b>FY 19</b>	<b>FY 20</b>	<b>FY 21</b>	<b>FY 22</b>	<b>FY 23</b>	<b>FY 24</b>	<b>19 TO 20</b>	<b>20 TO 21</b>	<b>21 TO 22</b>	<b>22 TO 23</b>	<b>19 TO 23</b>	<b>23 TO 24</b>	<b>19 TO 24</b>
<b>Oct</b>	7,265,208	7,144,116	3,922,096	4,429,727	6,369,413	6,894,684	-1.7%	-45.1%	12.9%	43.8%	-12.3%	8.2%	-5.1%
<b>Nov</b>	6,783,315	6,610,671	3,672,591	4,436,825	6,155,460	6,782,205	-2.5%	-44.4%	20.8%	38.7%	-9.3%	10.2%	0.0%
<b>Dec</b>	6,538,734	6,549,392	4,139,109	4,539,135	6,278,648	7,780,877	0.2%	-36.8%	9.7%	38.3%	-4.0%	23.9%	19.0%
<b>Jan</b>	6,797,602	6,890,225	4,235,761	4,411,086	6,523,666	7,106,759	1.4%	-38.5%	4.1%	47.9%	-4.0%	8.9%	4.5%
<b>Feb</b>	6,312,033	6,671,991	4,166,375	4,472,625	6,170,120	6,989,955	5.7%	-37.6%	7.4%	38.0%	-2.2%	13.3%	10.7%
<b>Mar</b>	6,712,624	4,694,315	4,993,168	4,960,115	7,108,423	7,647,481	-30.1%	6.4%	-0.7%	43.3%	5.9%	7.6%	13.9%
<b>Apr</b>	6,802,085	1,989,545	4,883,356	4,743,830	6,388,943	7,660,083	-70.8%	145.5%	-2.9%	34.7%	-6.1%	19.9%	12.6%
<b>May</b>	6,755,829	2,258,413	4,982,012	4,690,521	6,780,746	7,358,013	-66.6%	120.6%	-5.9%	44.6%	0.4%	8.5%	8.9%
<b>Jun</b>	6,026,467	3,082,213	3,794,581	4,625,876	6,363,861		-48.9%	23.1%	21.9%	37.6%	5.6%		
<b>Jul</b>	6,402,110	3,272,074	3,970,972	4,762,607	6,256,972		-48.9%	21.4%	19.9%	31.4%	-2.3%		
<b>Aug</b>	6,460,375	3,335,847	4,048,215	5,144,796	6,712,978		-48.4%	21.4%	27.1%	30.5%	3.9%		
<b>Sep</b>	6,240,212	3,501,209	4,120,180	4,549,876	6,405,165		-43.9%	17.7%	10.4%	40.8%	2.6%		
<b>FY Total</b>	<b>79,096,594</b>	<b>56,000,011</b>	<b>50,928,416</b>	<b>55,767,019</b>	<b>77,514,395</b>		<b>-29.2%</b>	<b>-9.1%</b>	<b>9.5%</b>	<b>39.0%</b>	<b>-2.0%</b>		

# **TOTAL MONTHLY AND AVERAGE WEEKDAY RIDERSHIP YEAR OVER YEAR COMPARISON CHARTS – ALL MODES COMBINED**



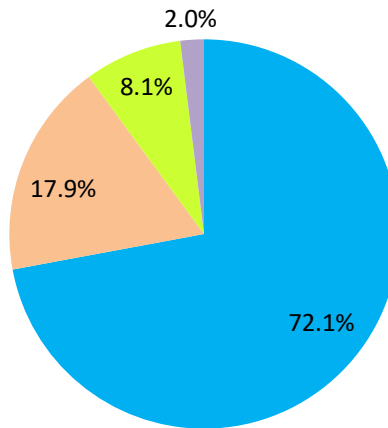
## AVERAGE WEEKDAY RIDERSHIP - MODAL SPLITS

May 2024



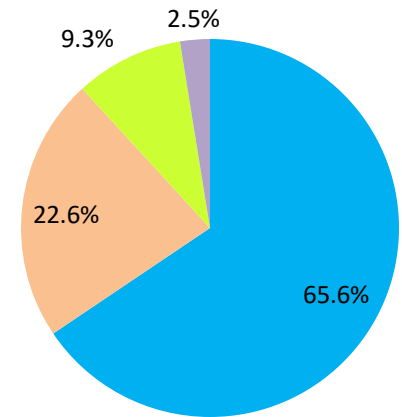
boardings

May 2023



boardings

May 2022

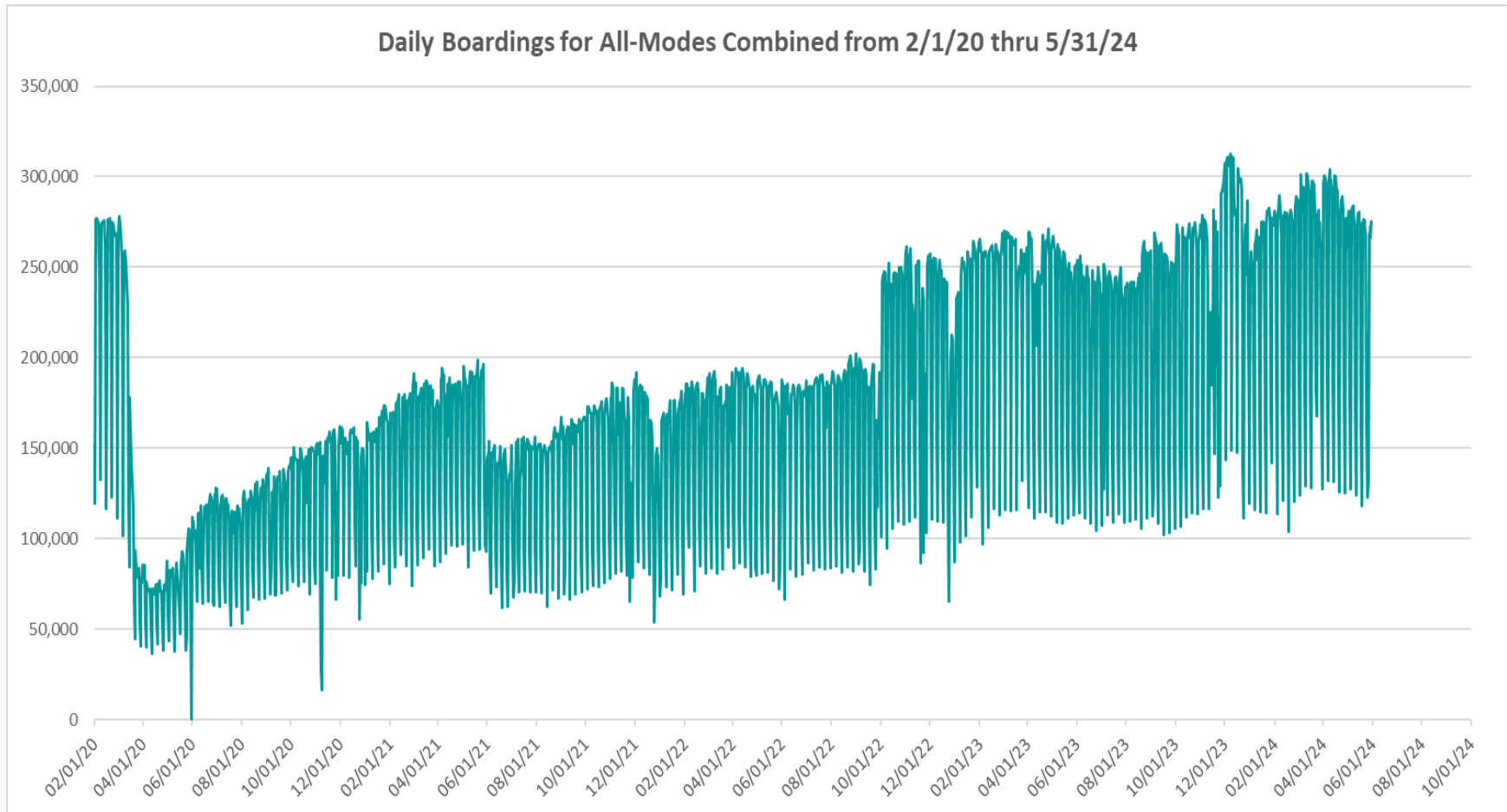


boardings



May 2024

## DAILY RIDERSHIP FOR ALL MODES COMBINED SINCE FEBRUARY 1, 2020



- (1) There was no Metrobus, Metrorail and Metromover service on 5/31/20, as a safety precaution, and no service for any of the four modes on 9/28/22 as a result of Hurricane Ian..
- (2) The dip at the start of the second week of December 2020 is due to Hurricane Eta.
- (3) Daily variations from October 2022 onward are, for the Bus portion, estimated from reports made available by the Bus APC data vendor..
- (4) The reduction seen beginning 6/1/21 is partly due to the resumption of fares for bus and rail, and partly the result of having resumed reporting Cubic farebox data rather than bus APC counts, as well as Cubic rail faregate counts instead of video camera counts on that date. The jump seen at the start of October 2022 is due to the return to APC bus ridership counts reporting begun on 10/1/22.
- (5) The marked peak in Dec 2023 is attributable to the Better Bus Network launch period and attendant free fares.
- (6) Periodic (weekly) variations are prominent, since weekday ridership is almost always significantly higher than weekend or holiday ridership.

## Metrobus



# Better Bus Network (BBN, 11/13/2023 lineup) Bus Route Changes (Pt 1)

The listings below and on the following page are to serve as an aid in identifying individual routes for comparison of ridership data between periods prior to and following the launch of the BBN on 11/13/2023. In November 2023, both old and new route numbers appear in data tables, since the launch took place near mid-month; beginning with December 2023, only the current (BBN) numbering system appear in tables, to allow for direct comparisons.

## BBN Numbering Changes:

Contracted **Route 1** was renumbered **Route 97**

Directly operated **Route 33** was renumbered **Route 103** (new, recycled number, not the same as former **Route 103** - C)

Directly operated **Route 51** (Flagler MAX) was renumbered **Route 211** (recycled number, not the same as the OVERTOWN CIRCULATOR)

Contracted **Route 71** was renumbered **Route 107** (new, recycled number, not the same as **Route 107** - G further below) and became directly operated

Directly operated **Route 79** was renumbered **Route 279** (79th Steet MAX)

Directly operated **Route 93** was renumbered **Route 203** (Biscayne MAX)

Directly operated **Route 99** was renumbered **Route 199**

Contracted **Route 101** - A was renumbered **Route 15**

Directly operated **Route 102** - B was renumbered **Route 26** (under the BBN's first phase, 07/24/2023 lineup)

Directly operated **Route 107** - G (old, not the same as the **Route 107** appearing above) was renumbered **Route 125**

Directly operated **Route 112** - L was renumbered **Route 79** (recycled number, not the same as the **Route 79** appearing above)

Directly operated **Route 120** was renumbered **Route 100**

Directly operated **Route 200** (CUTLER BAY LOCAL) was renumbered **Route 500** (recycled number, not the same as the **Route 500** further below)

Contracted **Route 210** was renumbered **Route 510** (SKYLAKE CIRCULATOR)

Contracted **Route 246** was renumbered **Route 401** (NORTH OWL)

Contracted **Route 248** (Princeton Circulator) was renumbered **Route 70** (recycled number, not the same as former **Route 70**)

Directly operated **Route 252** became contractor-operated, under the new name and number **Route 152**

Directly operated **Route 500** was renumbered **Route 400** (SOUTH OWL)

*The above routes, along with many others who retained their numbering, underwent modifications in various ways (realignment, new headways, days of operation, etc., some major), as part of the BBN design and its resulting lineup. Details for each DTPW Bus route are provided in the Miami-Dade County website. (Directly operated **Route 2** became contractor-operated but kept its number).*



# Better Bus Network (BBN, 11/13/2023 lineup) Bus Route Changes (Pt 2)

## BBN New Routes and Numbers:

Two new routes with new numbering were created to support the Better Bus Network:

Route 14 corresponds to a newly created route

Route 20 corresponds to a newly created route

## BBN Eliminated Routes:

The following routes were discontinued, as part of the Better Bus Network realignments:

Route 10

Route 16

Route 19

Route 29

Route 31 (BUSWAY LOCAL)

Route 42

Route 46 (LIBERTY CITY CONNECTION)

Route 57

Route 82 (WESTCHESTER CIRCULATOR)

Route 103 - C (old, previously used numbering, not the same as the Route 103 in the list on the previous page)

Route 211 (OVERTOWN CIRCULATOR, previously used numbering, not the same as the Route 211 in the list on the previous page)

Route 105 - E

Route 108 - H

Route 110 - J

Route 113 - M

Route 115

Route 119 - S

Route 155 (BISCAYNE GARDENS CIRCULATOR)

Route 202 (LITTLE HAITI CONNECTION)

Route 212 (SWEETWATER CIRCULATOR)

Route 217 (BUNCHE PARK CIRCULATOR)

Route 238 (EAST-WEST CONNECTION)

Route 241 (TUTTLE LIMITED)

Route 254 (BROWNSVILLE CIRCULATOR)

Route 267 (LUDLAM LIMITED)

Route 277 (7th AVENUE MAX)

Route 286 (NORTH POINTE CIRCULATOR)

Route 297 (27th AVENUE ORANGE MAX)

## Previously Eliminated Routes:

The following five express routes were suspended soon after the start of the SARS-CoV-2 pandemic, and never reinstated; their ridership appears in some of the tables in this report, as then-components of the reported bus system performance measures:

Route 175 (NW MIAMI-DADE EXPRESS)

Route 195 EXPRESS – BROWARD BLVD

Route 196 EXPRESS – BROWARD BLVD-CIVIC CENTER

Route 295 EXPRESS – SHERIDAN STREET

Route 296 EXPRESS – SHERIDAN STREET-CIVIC CENTER

*The preceding listings are not exhaustive, and the reader is referred to the Miami-Dade County website for further BBN details or additional changes, including through the May 29, 2024 lineup.*

## METROBUS AVERAGE WEEKDAY BOARDINGS BY ROUTE (†)

Route	Average Weekday	Average Weekday	Percent Change	Average Weekday	Percent Change	Average Weekday	Percent Change	Average Weekday	Percent Change
<b>weekdays</b>	<b>May-24</b>	<b>Apr-24</b>	<b>MOM</b>	<b>Oct-23</b>	<b>MO7M</b>	<b>May-23</b>	<b>YOY</b>	<b>Feb-20</b>	<b>Current vs Feb-20</b>
2	2,208	2,177	1.4%	2,977	-25.8%	2,922	-24.4%	3,102	-28.8%
3	8,339	8,871	-6.0%	5,416	54.0%	5,338	56.2%	5,137	62.3%
7	3,635	4,215	-13.8%	4,021	-9.6%	3,976	-8.6%	3,501	3.8%
8	4,910	5,212	-5.8%	4,650	5.6%	4,868	0.9%	3,909	25.6%
9	12,065	12,310	-2.0%	6,490	85.9%	6,171	95.5%	5,528	118.3%
10				2,443		2,381		2,482	
11	11,464	12,686	-9.6%	9,621	19.2%	8,635	32.8%	7,292	57.2%
12	3,012	3,036	-0.8%	2,891	4.2%	2,864	5.2%	2,779	8.4%
14	953	1,176	-19.0%						
15	554	494	12.1%	178	211.8%	224	147.6%	177	213.0%
16				2,009		1,925		1,862	
17	7,392	7,614	-2.9%	4,133	78.9%	3,793	94.9%	3,878	90.6%
19				1,807		1,656		1,542	
20	3,850	4,383	-12.2%						
21	2,268	2,152	5.4%	2,107	7.7%	1,958	15.9%	1,817	24.8%
22	2,515	2,625	-4.2%	4,502	-44.1%	4,339	-42.0%	3,640	-30.9%
24-CORAL WAY LIMITED	2,405	2,648	-9.2%	2,195	9.6%	2,336	3.0%	1,340	79.5%
26	2,445	2,505	-2.4%	1,877	30.2%	2,159	13.2%	1,778	37.5%
27	9,982	10,379	-3.8%	7,110	40.4%	7,031	42.0%	6,972	43.2%
29				516		519		534	
31-BUSWAY LOCAL						1,164		1,089	
32	1,792	1,948	-8.0%	2,699	-33.6%	2,721	-34.1%	2,390	-25.0%
34 TRANSITWAY EXPRESS	1,843	1,897	-2.9%	1,636	12.6%	1,772	4.0%	2,008	-8.2%
35	2,429	2,428	0.0%	3,070	-20.9%	2,787	-12.8%	2,421	0.3%
36	6,392	6,880	-7.1%	2,645	141.7%	2,683	138.2%	2,536	152.1%
37	4,633	5,032	-7.9%	3,475	33.3%	3,633	27.5%	3,273	41.6%
38 TRANSITWAY MAX	7,453	7,390	0.8%	5,714	30.4%	6,503	14.6%	6,361	17.2%
39 TRANSITWAY EXPRESS	816	858	-4.9%	742	9.9%			893	-8.6%
40	2,002	2,020	-0.9%	2,344	-14.6%	2,374	-15.7%	1,772	13.0%
42				1,001		1,038		820	
46 - LIBERTY CITY CONN.				22		22		41	
52	1,737	1,777	-2.2%	1,390	25.0%	1,339	29.8%	1,261	37.7%
54	2,927	2,925	0.1%	3,086	-5.1%	3,204	-8.6%	2,940	-0.5%
56	558	620	-10.0%	391	42.7%	376	48.4%	354	57.7%
57				522		539		433	
62	2,952	3,126	-5.6%	2,496	18.3%	1,839	60.5%	1,815	62.6%
70	302	296	2.2%	161	87.6%	103	192.7%	135	124.8%

(†) In this table and those which follow, "YOY" stands for "year-over-year", "MOM" for "month-over-month" and, e.g., "MO7M" for "month over seven months", i.e., current month vs 12 months prior, one month prior, and compared to pre-BBN, respectively. The February 2020 numbers serve as a pre-pandemic benchmark.

## METROBUS AVERAGE WEEKDAY BOARDINGS BY ROUTE

Route	Average Weekday	Average Weekday	Percent Change	Average Weekday	Percent Change	Average Weekday	Percent Change	Average Weekday	Percent Change
<b>weekdays</b>	May-24	Apr-24	MOM	Oct-23	MO7M	May-23	YOY	Feb-20	Current vs Feb-20
72	952	953	-0.1%	670	42.1%	731	30.2%	781	21.8%
73	1,437	1,527	-5.9%	2,868	-49.9%	3,193	-55.0%	2,124	-32.3%
75	3,172	3,246	-2.3%	1,594	99.0%	1,430	121.8%	1,429	122.0%
77	12,434	12,506	-0.6%	9,959	24.8%	9,051	37.4%	7,129	74.4%
79	7,981	9,076	-12.1%	8,481	-5.9%	8,636	-7.6%	7,636	4.5%
82 - WESTCHESTER CIRC				61		72		62	
87	2,483	2,499	-0.6%	1,924	29.1%	1,973	25.8%	1,499	65.6%
88	2,032	2,066	-1.6%	2,419	-16.0%	2,472	-17.8%	2,076	-2.1%
95-EXPRESS GOLDEN GLADES	1,381	1,438	-3.9%	1,195	15.6%	1,098	25.9%	1,690	-18.3%
97	227	234	-3.0%	225	1.0%	178	27.8%	184	23.3%
100	14,955	18,101	-17.4%	6,128	144.1%	6,466	131.3%	6,667	124.3%
103 - C								463	
103	2,340	2,332	0.3%	1,967	19.0%	2,036	14.9%	1,687	38.7%
104	1,234	1,255	-1.7%	1,024	20.5%	968	27.4%	837	47.4%
105 - E				1,402		1,429		1,287	
107	2,143	2,373	-9.7%	825	159.7%	756	183.3%	711	201.6%
108 - H				487		615		473	
110 - J				2,955		3,166		2,508	
113 - M				887		954		866	
115				151		153		180	
119 - S				9,588		9,600		8,970	
125	4,844	5,300	-8.6%	2,099	130.7%	2,011	140.9%	1,713	182.7%
132 -TRI-RAIL DORAL SHUTTLE	42	42	-0.9%	37	14.6%	52	-20.1%	16	168.4%
135	2,141	2,220	-3.5%	1,755	22.0%	1,632	31.2%	1,399	53.1%
136	164	180	-9.1%	162	1.2%	156	4.6%	126	29.6%
137-WEST DADE CONNECTION	2,523	2,566	-1.6%	2,119	19.1%	2,302	9.6%	1,626	55.2%
150-MIAMI BEACH AIRPORT EXPRESS	1,530	1,707	-10.4%	2,149	-28.8%	2,210	-30.8%	1,867	-18.1%
152	402	411	-2.1%	1,051	-61.7%	1,056	-61.9%	851	-52.7%
155 - BISCAYNE GARDENS CIRC				45		55		44	
175 - NW MIAMI-DADE EXPRESS								33	
183	5,419	5,557	-2.5%	3,653	48.3%	3,610	50.1%	3,149	72.1%
195 EXPRESS - BROWARD BLVD								372	
196 EXPRESS - SHERIDAN ST								383	
199	2,159	2,091	3.2%	1,899	13.7%	1,862	15.9%	1,473	46.6%
202 - LITTLE HAITI CONN				110		76		140	
203 - BISCAYNE MAX	1,257	1,336	-5.9%	3,666	-65.7%	3,664	-65.7%	3,334	-62.3%

## METROBUS AVERAGE WEEKDAY BOARDINGS BY ROUTE

Route	Average Weekday	Average Weekday	Percent Change	Average Weekday	Percent Change	Average Weekday	Percent Change	Average Weekday	Percent Change
<b>weekdays</b>	May-24	Apr-24	MOM	Oct-23	MO7M	May-23	YOY	Feb-20	Current vs Feb-20
204 KILLIAN MAX	622	658	-5.4%	620	0.4%	765	-18.6%	1,071	-41.9%
207 (7th St)-LITTLE HAVANA CONN	1,655	1,901	-12.9%	1,819	-9.0%	1,749	-5.4%	1,489	11.1%
208 (8th St)-LITTLE HAVANA CONN	1,585	1,769	-10.4%	1,659	-4.4%	1,556	1.9%	1,308	21.2%
211 OVERTOWN CIRCULATOR				71		89		58	
211 - FLAGLER MAX	1,628	1,898	-14.2%	3,824	-57.4%	3,900	-58.3%	3,109	-47.6%
212-SWEETWATER CIRC				22		23		15	
217 - BUNCHE PARK CIRC				80		70		97	
238-EAST/WEST CONN				593		620		449	
241 TUTTLE LIMITED				348		351			
254-BROWNSVILLE CIRC				5		7		19	
267-LUDLAM LIMITED				162		169		149	
272 SUNSET MAX (*)	409	403	1.6%	428	-4.4%	455	-10.0%	550	-25.6%
277-7TH AVENUE MAX				879		859		683	
279 - 79 STREET MAX	636	847	-25.0%	469	35.5%	555	14.4%	361	75.9%
286-NORTH POINTE CIRC				93		107		97	
287-SAGA BAY MAX	439	404	8.7%	341	28.8%	322	36.2%	358	22.7%
288 KENDALL MAX	487	537	-9.2%	372	30.9%	456	6.8%	762	-36.1%
295								233	
296								215	
297-27th AVENUE ORANGE MAX				1,229		1,282		1,356	
301-DADE MONROE EXPRESS	1,027	1,037	-0.9%	955	7.5%	967	6.2%	841	22.1%
302-CARD SOUND EXPRESS	104	103	1.6%	91	14.9%	107	-2.2%	86	20.8%
338 - WEEKEND EXPRESS									
344	131	113	15.5%	76	72.6%	76	71.5%	96	36.2%
400 - SOUTH OWL	84	82	1.7%	71	18.1%	82	1.5%	81	3.3%
401 - NORTH OWL	63	73	-13.2%	61	3.9%	62	1.6%	94	-32.7%
500 - CUTLER BAY LOCAL	278	288	-3.5%	176	58.3%	206	35.2%	158	76.5%
510 - SKYLAKE CIRCULATOR (*)	462	464	-0.6%	471	-2.1%	402	14.8%	282	63.8%
836 EXPRESS	317	348	-8.8%	247	28.5%	375	-15.5%		
837 EXPRESS	214	206	3.8%	195	9.9%	151	41.3%		
AHEPA SHUTTLE	20	17	15.9%	18	12.7%	24	-14.9%	21	-3.6%
FEDERATION GARDENS SHUTTLE									
GREEN HILLS SHUTTLE	7	8	-12.5%	5	34.6%	7	0.0%	9	-22.2%
KINGS CREEK SHUTTLE	10	10	3.2%	14	-28.7%	11	-10.9%	13	-24.6%
ROBERT SHARP SHUTTLE	30	27	14.0%	23	31.3%	19	57.3%	10	217.9%
SIERRA LAKES SHUTTLE	20	22	-8.2%	16	30.3%	15	32.5%	45	-55.1%
<b>Total</b>	<b>197,313</b>	<b>209,910</b>	<b>-6.0%</b>	<b>185,320</b>	<b>6.5%</b>	<b>184,695</b>	<b>6.8%</b>	<b>167,711</b>	<b>17.7%</b>

(\*) To see which routes fully or partly operated under contract this month, please refer to the ranking table in Slide 32.

(1) Includes shuttles and those routes which were not run some years.

(2) Several express routes were suspended beginning at the end of March 2020, due to the SARS-CoV-2 pandemic, while other routes had alignment and schedule modifications made to them, in an ongoing effort to optimize service delivery.

## METROBUS AVERAGE SATURDAY BOARDINGS BY ROUTE

Route	Average Saturday	Average Saturday	Percent Change	Average Saturday	Percent Change	Average Saturday	Percent Change	Average Saturday	Percent Change
<b>Saturdays</b>	<b>May-24</b>	<b>Apr-24</b>	<b>MOM</b>	<b>Oct-23</b>	<b>MO7M</b>	<b>May-23</b>	<b>YOY</b>	<b>Feb-20</b>	<b>Current vs Feb-20</b>
2	1,051	1,227	-14.4%	1,605	-34.6%	1,689	-37.8%	1,616	-35.0%
3	6,137	6,820	-10.0%	5,754	6.7%	6,060	1.3%	5,229	17.4%
7	1,994	2,436	-18.1%	1,972	1.1%	2,144	-7.0%	1,887	5.6%
8	2,369	2,731	-13.3%	2,334	1.5%	2,604	-9.0%	2,027	16.8%
9	7,152	7,703	-7.2%	3,677	94.5%	3,649	96.0%	3,034	135.7%
10				2,107		2,060		1,896	
11	8,028	9,749	-17.7%	5,787	38.7%	6,952	15.5%	5,182	54.9%
14	776	868	-10.6%						
15	338	325	4.0%	93	261.9%	64	429.4%	71	376.7%
16				1,662		1,730		1,566	
17	4,762	5,155	-7.6%	2,553	86.5%	2,562	85.9%	2,363	101.5%
20	2,957	3,569	-17.1%						
22	1,462	1,521	-3.9%	2,425	-39.7%	2,497	-41.5%	2,084	-29.9%
24-CORAL WAY LIMITED	1,733	1,953	-11.3%	1,400	23.7%	1,576	9.9%	1,165	48.7%
26	1,356	1,315	3.1%	966	40.4%	1,095	23.9%	851	59.3%
27	5,766	7,697	-25.1%	4,006	43.9%	4,438	29.9%	4,034	42.9%
31-BUSWAY LOCAL				0		1,208		896	
32	1,159	1,090	6.3%	1,261	-8.1%	1,275	-9.1%	1,029	12.7%
35	1,658	1,784	-7.1%	1,540	7.6%	1,586	4.5%	1,372	20.8%
36	4,822	4,959	-2.8%	1,677	187.6%	1,668	189.2%	1,289	274.0%
37	3,162	3,333	-5.2%	2,062	53.3%	2,124	48.9%	2,090	51.2%
38 TRANSITWAY MAX	6,000	6,596	-9.0%	6,328	-5.2%	5,513	8.8%	4,715	27.2%
40	1,141	1,182	-3.5%	926	23.2%	918	24.2%	655	74.3%
42				617		703		552	
52	1,042	1,073	-2.9%	694	50.2%	732	42.4%	686	51.9%
54	1,776	1,937	-8.3%	1,925	-7.7%	1,986	-10.6%	1,727	2.8%
56	271	252	7.5%						
62	1,834	1,951	-6.0%	1,823	0.6%	1,422	29.0%	1,343	36.5%
70	202	184	10.1%						
72	521	518	0.6%	357	46.1%	408	27.8%	350	49.0%
73	602	616	-2.3%	1,202	-49.9%	1,407	-57.2%	860	-30.1%
75	2,016	2,002	0.7%	550	266.5%	514	292.6%	468	330.7%
77	7,658	8,000	-4.3%	5,510	39.0%	5,455	40.4%	4,197	82.5%
79	6,759	7,612	-11.2%	7,094	-4.7%	7,129	-5.2%	5,667	19.3%
82 - WESTCHESTER CIRC				38		37		50	

## METROBUS AVERAGE SATURDAY BOARDINGS BY ROUTE

Route	Average Saturday	Average Saturday	Percent Change	Average Saturday	Percent Change	Average Saturday	Percent Change	Average Saturday	Percent Change
<b>Saturdays</b>	<b>May-24</b>	<b>Apr-24</b>	<b>MOM</b>	<b>Oct-23</b>	<b>MO7M</b>	<b>May-23</b>	<b>YOY</b>	<b>Feb-20</b>	<b>Current vs Feb-20</b>
87	988	1,034	-4.4%	532	85.9%	632	56.4%	402	145.6%
88	1,543	1,614	-4.4%	1,661	-7.1%	1,837	-16.0%	1,620	-4.8%
97	183	175	4.7%	163	12.3%	185	-0.7%	215	-14.8%
100	14,865	15,865	-6.3%	5,637	163.7%	5,972	148.9%	4,744	213.3%
103 - C						0		315	
103	1,312	1,340	-2.1%	1,239	5.9%	1,242	5.6%	951	38.0%
104	814	882	-7.7%	445	83.1%	550	48.1%	468	73.7%
105 - E				772		786		619	
107	1,379	1,507	-8.5%	238	480.4%	271	408.2%	252	447.5%
108 - H				401		467		372	
110 - J				1,394		2,175		1,952	
113 - M				577		636		503	
115				80		97		82	
119 - S				8,118		8,394		6,861	
125	3,202	3,368	-4.9%	1,297	147.0%	1,387	130.9%	1,066	200.3%
135	893	938	-4.7%	556	60.7%	572	56.3%	539	65.8%
137-WEST DADE CONNECTION	1,545	1,766	-12.5%	1,337	15.6%	1,495	3.3%	1,027	50.4%
150-MIAMI BEACH AIRPORT EXPRESS	1,619	1,673	-3.2%	2,161	-25.1%	2,205	-26.6%	1,604	0.9%
152	248	244	1.5%	375	-33.9%	455	-45.6%	302	-18.0%
183	3,180	3,207	-0.8%	1,960	62.3%	2,119	50.1%	1,790	77.7%
199	1,301	1,427	-8.8%	1,106	17.6%	1,089	19.5%	849	53.3%
202 - LITTLE HAITI CONN				22		24		50	
207 (7th St)-LITTLE HAVANA CONN	794	944	-15.9%	929	-14.5%	1,139	-30.3%	1,032	-23.1%
208 (8th St)-LITTLE HAVANA CONN	962	1,156	-16.7%	1,030	-6.6%	977	-1.5%	1,044	-7.9%
241 TUTTLE LIMITED				222		204			
286-NORTH POINTE CIRC				61		71		41	
301-DADE MONROE EXPRESS	949	937	1.3%	885	7.2%	863	9.9%	801	18.4%
302-CARD SOUND EXPRESS	106	108	-1.6%	94	12.8%	88	20.8%	57	87.3%
338 - WEEKEND EXPRESS	176	175	0.6%	259	-32.1%	216	-18.3%	237	-25.6%
344	69	77	-10.7%						
400 - SOUTH OWL	94	104	-10.3%	104	-9.9%	63	49.6%	70	33.6%
401 - NORTH OWL	64	81	-20.2%	61	6.2%	48	33.2%	84	-23.9%
500 - CUTLER BAY LOCAL	245	281	-12.8%	152	61.3%	158	54.9%	119	105.3%
510 - SKYLAKE CIRCULATOR (*)	293	329	-10.9%	217	34.8%	116	152.4%	165	77.4%
12/21 WEEKEND INTERLINE	3,022	2,952	2.4%	3,290	-8.1%	3,116	-3.0%	2,528	19.6%
FEDERATION GARDENS SHUTTLE	31	30	4.2%	20	56.3%	19	64.5%	28	10.0%
<b>Total</b>	<b>126,372</b>	<b>138,364</b>	<b>-8.7%</b>	<b>107,331</b>	<b>17.7%</b>	<b>112,864</b>	<b>12.0%</b>	<b>93,742</b>	<b>34.8%</b>

## METROBUS AVERAGE SUNDAY BOARDINGS BY ROUTE

Route	Average Sunday	Average Sunday	Percent Change	Average Sunday	Percent Change	Average Sunday	Percent Change	Average Sunday	Percent Change
Sundays	May-24	Apr-24	MOM	Oct-23	MO7M	May-23	YOY	Feb-20	Current vs Feb-20
2	823	761	8.1%	1,214	-32.2%	1,196	-31.1%	1,335	-38.3%
3	5,053	5,380	-6.1%	4,408	14.6%	5,250	-3.8%	4,353	16.1%
7	1,489	1,752	-15.0%	1,632	-8.8%	1,665	-10.6%	1,654	-10.0%
8	1,746	1,795	-2.7%	1,838	-5.0%	2,140	-18.4%	1,746	0.0%
9	5,257	4,995	5.2%	2,756	90.8%	2,832	85.6%	2,549	106.2%
10				1,632		1,596		1,441	
11	5,753	6,312	-8.9%	3,803	51.3%	4,485	28.3%	3,917	46.9%
14	871	1,104	-21.2%						
15	312	258	21.1%	53	488.3%	55	466.9%	56	461.8%
16				1,023		1,118		997	
17	3,135	3,092	1.4%	1,920	63.3%	1,798	74.4%	1,833	71.0%
20	2,290	2,283	0.3%						
22	1,157	999	15.8%	1,915	-39.6%	1,947	-40.6%	1,548	-25.3%
24-CORAL WAY LIMITED	1,156	1,252	-7.7%	1,108	4.3%	1,174	-1.6%	905	27.8%
26	1,016	1,029	-1.2%	871	16.7%	942	7.9%	717	41.9%
27	3,882	4,364	-11.0%	3,146	23.4%	3,220	20.6%	2,918	33.0%
31-BUSWAY LOCAL				0		766		715	
32	843	797	5.8%	768	9.8%	753	11.9%	772	9.2%
35	1,364	1,533	-11.0%	1,175	16.0%	1,218	12.0%	942	44.9%
36	3,889	3,681	5.7%	1,160	235.1%	1,253	210.4%	1,111	250.2%
37	2,275	2,244	1.4%	1,755	29.6%	1,860	22.3%	1,739	30.8%
38 TRANSITWAY MAX	4,691	5,236	-10.4%	4,957	-5.4%	5,287	-11.3%	4,147	13.1%
40	753	831	-9.4%	542	38.9%	648	16.2%	447	68.4%
42				425		431		416	
52	964	918	5.0%	496	94.2%	525	83.6%	466	106.7%
54	1,222	1,233	-0.9%	1,181	3.5%	1,308	-6.6%	1,171	4.3%
62	1,265	1,272	-0.6%	1,040	21.6%	917	37.9%	891	42.0%
70	158	144	9.6%						
72	395	432	-8.5%	259	52.5%	299	32.1%	265	49.5%
73	231	273	-15.5%	602	-61.7%	770	-70.1%	495	-53.4%
75	1,495	1,459	2.5%	352	325.1%	336	344.6%	271	452.0%
77	4,994	5,024	-0.6%	3,980	25.5%	3,837	30.2%	2,815	77.4%
79	5,640	5,461	3.3%	4,837	16.6%	5,436	3.7%	4,804	17.4%

## METROBUS AVERAGE SUNDAY BOARDINGS BY ROUTE

Route	Average Sunday	Average Sunday	Percent Change	Average Sunday	Percent Change	Average Sunday	Percent Change	Average Sunday	Percent Change
<b>Sundays</b>	May-24	Apr-24	MOM	Oct-23	MO7M	May-23	YOY	Feb-20	Current vs Feb-20
87	532	543	-2.0%	362	47.0%	414	28.5%	319	66.8%
88	1,113	1,126	-1.2%	1,255	-11.4%	1,379	-19.3%	1,286	-13.5%
97	146	161	-9.1%	149	-1.7%	153	-4.2%	201	-27.2%
100	10,134	10,013	1.2%	3,492	190.2%	3,932	157.7%	3,469	192.1%
103 - C						0		212	
103	906	845	7.2%	729	24.3%	768	18.0%	607	49.3%
104	639	605	5.6%	348	83.8%	396	61.5%	317	101.7%
105 - E				634		703		616	
107	1,167	1,224	-4.7%	187	524.0%	172	577.6%	162	620.2%
108 - H				363		436		328	
110 - J				1,699		1,788		1,638	
113 - M				444		563		431	
115				66		83		80	
119 - S				7,612		9,001		7,141	
125	2,041	2,021	1.0%	1,036	97.0%	1,161	75.8%	895	128.0%
135	708	650	9.0%	474	49.4%	397	78.3%	349	102.7%
137-WEST DADE CONNECTION	1,121	1,187	-5.5%	956	17.3%	1,087	3.1%	879	27.6%
150-MIAMI BEACH AIRPORT EXPRESS	1,405	1,436	-2.1%	1,966	-28.6%	1,922	-26.9%	1,574	-10.7%
152	171	165	3.6%	331	-48.5%	354	-51.8%	199	-14.2%
183	2,122	2,161	-1.8%	1,569	35.2%	1,672	27.0%	1,413	50.2%
199	1,090	1,019	7.0%	887	22.9%	858	27.0%	658	65.6%
202 - LITTLE HAITI CONN				21		23		39	
207 (7th St)-LITTLE HAVANA CONN	539	755	-28.6%	648	-16.8%	886	-39.2%	796	-32.3%
208 (8th St)-LITTLE HAVANA CONN	754	739	2.1%	862	-12.5%	935	-19.4%	911	-17.3%
241 TUTTLE LIMITED				187		193			
301-DADE MONROE EXPRESS	881	873	0.9%	867	1.7%	836	5.4%	751	17.3%
302-CARD SOUND EXPRESS	96	90	7.3%	72	34.1%	73	31.9%	57	68.4%
338 - WEEKEND EXPRESS	131	188	-30.3%	247	-47.2%	223	-41.5%	252	-48.2%
400 - SOUTH OWL	85	96	-11.2%	70	21.1%	45	88.4%	83	2.5%
401 - NORTH OWL	71	85	-17.2%	65	9.3%	58	21.7%	87	-18.9%
500 - CUTLER BAY LOCAL	93	107	-13.3%	86	7.4%	56	66.5%	59	58.3%
510 - SKYLAKE CIRCULATOR (*)	302	276	9.6%	194	55.6%	116	160.1%	143	111.3%
12/21 WEEKEND INTERLINE	2,407	2,387	0.8%	2,700	-10.9%	2,214	8.7%	2,048	17.5%
<b>Total</b>	<b>92,768</b>	<b>94,659</b>	<b>-2.0%</b>	<b>81,427</b>	<b>13.9%</b>	<b>87,959</b>	<b>5.5%</b>	<b>75,428</b>	<b>23.0%</b>



## METROBUS TOTAL MONTHLY BOARDINGS BY ROUTE

Route	Total Month	Total Month	Percent Change	Total Month	Percent Change	Total Month	Percent Change	Total Month	Percent Change
<b>total month</b>	<b>May-24</b>	<b>Apr-24</b>	<b>MOM</b>	<b>Oct-23</b>	<b>MO7M</b>	<b>May-23</b>	<b>YOY</b>	<b>Feb-20</b>	<b>Current vs Feb-20</b>
2	56,887	55,846	1.9%	77,976	-27.0%	77,013	-26.1%	75,463	-24.6%
3	233,269	243,965	-4.4%	164,203	42.1%	167,925	38.9%	146,294	59.5%
7	95,381	109,489	-12.9%	104,507	-8.7%	104,372	-8.6%	86,077	10.8%
8	126,228	132,773	-4.9%	120,821	4.5%	128,213	-1.5%	95,295	32.5%
9	320,326	321,608	-0.4%	171,265	87.0%	164,514	94.7%	135,924	135.7%
10				70,338		68,607		64,874	
11	313,091	343,340	-8.8%	253,837	23.3%	240,199	30.3%	187,425	67.0%
12	66,266	66,797	-0.8%	63,603	4.2%	63,018	5.2%	55,585	19.2%
14	28,413	33,769	-15.9%						
15	15,091	13,191	14.4%	4,545	232.0%	5,451	176.8%	4,114	266.8%
16				55,959		54,868		49,061	
17	197,352	200,491	-1.6%	110,727	78.2%	102,677	92.2%	96,715	104.1%
19				39,745		36,435		30,847	
20	107,968	119,839	-9.9%						
21	49,904	47,338	5.4%	46,355	7.7%	43,066	15.9%	36,341	37.3%
22	66,961	67,824	-1.3%	118,329	-43.4%	115,175	-41.9%	89,404	-25.1%
24-CORAL WAY LIMITED	65,619	71,078	-7.7%	59,432	10.4%	63,559	3.2%	36,237	81.1%
26	64,302	64,484	-0.3%	49,521	29.8%	56,589	13.6%	42,683	50.7%
27	262,086	276,587	-5.2%	188,160	39.3%	188,531	39.0%	171,282	53.0%
29				11,342		11,420		10,684	
31-BUSWAY LOCAL						34,267		29,125	
32	48,286	50,405	-4.2%	68,263	-29.3%	68,733	-29.7%	56,027	-13.8%
34 TRANSITWAY EXPRESS	40,539	41,739	-2.9%	36,002	12.6%	38,980	4.0%	40,159	0.9%
35	66,889	66,691	0.3%	79,573	-15.9%	73,748	-9.3%	59,041	13.3%
36	179,363	185,915	-3.5%	70,698	153.7%	71,963	149.2%	61,606	191.1%
37	125,949	133,012	-5.3%	93,471	34.7%	97,713	28.9%	82,870	52.0%
38 TRANSITWAY MAX	211,416	209,908	0.7%	175,803	20.3%	191,549	10.4%	167,379	26.3%
39 TRANSITWAY EXPRESS	17,956	18,878	-4.9%	16,333	9.9%			17,853	0.6%
40	52,369	52,483	-0.2%	57,992	-9.7%	59,141	-11.5%	40,497	29.3%
42				26,611		27,801		20,825	
46 - LIBERTY CITY CONN.				477		484		814	
52	47,207	47,053	0.3%	35,844	31.7%	35,002	34.9%	30,522	54.7%
54	77,604	77,038	0.7%	81,490	-4.8%	84,962	-8.7%	72,125	7.6%
56	13,352	14,641	-8.8%	8,598	55.3%	8,264	61.6%	7,071	88.8%
57				11,491		11,858		8,665	
62	78,598	81,671	-3.8%	67,398	16.6%	50,723	55.0%	46,582	68.7%
70	8,247	7,820	5.5%	3,546	132.6%	2,272	263.0%	2,690	206.6%

## METROBUS TOTAL MONTHLY BOARDINGS BY ROUTE

Route	Total Month	Total Month	Percent Change	Total Month	Percent Change	Total Month	Percent Change	Total Month	Percent Change
<b>total month</b>	<b>May-24</b>	<b>Apr-24</b>	<b>MOM</b>	<b>Oct-23</b>	<b>MO7M</b>	<b>May-23</b>	<b>YOY</b>	<b>Feb-20</b>	<b>Current vs Feb-20</b>
72	25,006	24,770	1.0%	17,459	43.2%	19,220	30.1%	18,433	35.7%
73	35,177	37,150	-5.3%	70,903	-50.4%	79,733	-55.9%	48,767	-27.9%
75	85,321	85,259	0.1%	39,021	118.7%	35,195	142.4%	31,994	166.7%
77	329,149	327,234	0.6%	261,039	26.1%	240,120	37.1%	174,833	88.3%
79	230,808	251,972	-8.4%	239,146	-3.5%	245,694	-6.1%	200,268	15.2%
82 - WESTCHESTER CIRC				1,488		1,734		1,482	
87	61,231	61,276	-0.1%	46,254	32.4%	48,007	27.5%	33,273	84.0%
88	56,435	56,405	0.1%	66,138	-14.7%	68,634	-17.8%	54,772	3.0%
95-EXPRESS GOLDEN GLADES	30,391	31,628	-3.9%	26,295	15.6%	24,146	25.9%	33,796	-10.1%
97	6,455	6,489	-0.5%	6,337	1.9%	5,407	19.4%	5,558	16.1%
100	439,147	501,730	-12.5%	174,819	151.2%	185,793	136.4%	170,942	156.9%
103 - C								11,682	
103	61,251	60,053	2.0%	51,871	18.1%	53,602	14.3%	40,918	49.7%
104	33,592	33,568	0.1%	26,049	29.0%	25,473	31.9%	20,351	65.1%
105 - E				37,092		38,097		31,302	
107	58,490	63,133	-7.4%	20,040	191.9%	18,588	214.7%	16,118	262.9%
108 - H				14,133		17,574		12,624	
110 - J				79,080		87,294		66,481	
113 - M				24,040		26,349		21,548	
115				3,968		4,157		4,334	
119 - S				281,456		289,787		242,257	
125	129,573	138,141	-6.2%	56,547	129.1%	55,586	133.1%	43,178	200.1%
132 -TRI-RAIL DORAL SHUTTLE	921	929	-0.9%	804	14.6%	1,152	-20.1%	312	195.2%
135	54,224	55,188	-1.7%	43,211	25.5%	40,172	35.0%	32,067	69.1%
136	3,598	3,957	-9.1%	3,557	1.2%	3,441	4.6%	2,524	42.6%
137-WEST DADE CONNECTION	67,300	68,254	-1.4%	56,750	18.6%	62,058	8.4%	41,167	63.5%
150-MIAMI BEACH AIRPORT EXPRESS	47,153	49,977	-5.7%	65,763	-28.3%	67,042	-29.7%	51,651	-8.7%
152	10,691	10,671	0.2%	26,285	-59.3%	26,822	-60.1%	19,325	-44.7%
155 - BISCAYNE GARDENS CIRC				985		1,210		881	
175 - NW MIAMI-DADE EXPRESS								661	
183	142,542	143,721	-0.8%	96,050	48.4%	96,262	48.1%	77,570	83.8%
195 EXPRESS - BROWARD BLVD								7,441	
196 EXPRESS - SHERIDAN ST								7,658	
199	58,143	55,784	4.2%	50,634	14.8%	49,617	17.2%	36,325	60.1%
202 - LITTLE HAITI CONN				2,620		1,879		3,200	
203 - BISCAYNE MAX	27,657	29,391	-5.9%	80,650	-65.7%	80,610	-65.7%	66,684	-58.5%

## METROBUS TOTAL MONTHLY BOARDINGS BY ROUTE

Route	Total Month	Total Month	Percent Change	Total Month	Percent Change	Total Month	Percent Change	Total Month	Percent Change
<b>total month</b>	<b>May-24</b>	<b>Apr-24</b>	<b>MOM</b>	<b>Oct-23</b>	<b>MO7M</b>	<b>May-23</b>	<b>YOY</b>	<b>Feb-20</b>	<b>Current vs Feb-20</b>
204 KILLIAN MAX	13,689	14,472	-5.4%	13,632	0.4%	16,820	-18.6%	21,418	-36.1%
207 (7th St)-LITTLE HAVANA CONN	42,278	48,609	-13.0%	46,970	-10.0%	47,465	-10.9%	38,127	10.9%
208 (8th St)-LITTLE HAVANA CONN	42,493	46,495	-8.6%	44,922	-5.4%	42,812	-0.7%	35,018	21.3%
211 OVERTOWN CIRCULATOR				1,567		1,966		1,159	
211 - FLAGLER MAX	35,813	41,762	-14.2%	84,135	-57.4%	85,801	-58.3%	62,186	-42.4%
212-SWEETWATER CIRC				494		500		295	
217 - BUNCHE PARK CIRC				1,759		1,540		1,949	
238-EAST/WEST CONN				13,036		13,646		8,987	
241 TUTTLE LIMITED				9,471		9,505			
254-BROWNSVILLE CIRC				105		160		384	
267-LUDLAM LIMITED				3,567		3,722		2,978	
272 SUNSET MAX (*)	9,006	8,861	1.6%	9,423	-4.4%	10,002	-10.0%	11,004	-18.2%
277-7TH AVENUE MAX				19,345		18,896		13,669	
279 - 79 STREET MAX	13,983	18,636	-25.0%	10,318	35.5%	12,218	14.4%	7,228	93.5%
286-NORTH POINTE CIRC				2,279		2,634		2,145	
287-SAGA BAY MAX	9,660	8,884	8.7%	7,499	28.8%	7,093	36.2%	7,160	34.9%
288 KENDALL MAX	10,721	11,805	-9.2%	8,189	30.9%	10,037	6.8%	15,249	-29.7%
295								4,668	
296								4,297	
297-27th AVENUE ORANGE MAX				27,047		28,210		27,125	
301-DADE MONROE EXPRESS	30,799	30,051	2.5%	28,889	6.6%	28,915	6.5%	23,838	29.2%
302-CARD SOUND EXPRESS	3,196	3,046	4.9%	2,728	17.2%	3,058	4.5%	2,236	42.9%
338 - WEEKEND EXPRESS	1,357	1,450	-6.4%	2,274	-40.3%	1,978	-31.4%	2,191	-38.1%
344	3,151	2,797	12.7%	1,666	89.1%	1,677	87.9%	1,919	64.2%
400 - SOUTH OWL	2,639	2,609	1.1%	2,324	13.6%	2,288	15.3%	2,301	14.7%
401 - NORTH OWL	1,996	2,259	-11.6%	1,899	5.1%	1,847	8.1%	2,641	-24.4%
500 - CUTLER BAY LOCAL	7,567	7,894	-4.1%	4,907	54.2%	5,442	39.0%	3,984	89.9%
510 - SKYLAKE CIRCULATOR (*)	12,839	12,631	1.6%	12,211	5.1%	9,894	29.8%	7,033	82.6%
836 EXPRESS	6,977	7,652	-8.8%	5,428	28.5%	8,260	-15.5%		
837 EXPRESS	4,703	4,532	3.8%	4,281	9.9%	3,328	41.3%		
12/21 WEEKEND INTERLINE	24,123	21,355	13.0%	26,661	-9.5%	23,537	2.5%	20,830	15.8%
AHEPA SHUTTLE	100	69	44.9%	71	40.8%	94	6.4%	83	20.5%
FEDERATION GARDENS SHUTTLE	125	120	4.2%	80	56.3%	76	64.5%	142	-12.0%
GREEN HILLS SHUTTLE	21	40	-47.5%	26	-19.2%	28	-25.0%	36	-41.7%
KINGS CREEK SHUTTLE	49	38	28.9%	55	-10.9%	44	11.4%	52	-5.8%
ROBERT SHARP SHUTTLE	151	106	42.5%	92	64.1%	96	57.3%	38	297.4%
SIERRA LAKES SHUTTLE	101	88	14.8%	62	62.9%	61	65.6%	180	-43.9%
<b>Total</b>	<b>5,308,711</b>	<b>5,548,614</b>	<b>-4.3%</b>	<b>4,912,151</b>	<b>8.1%</b>	<b>4,953,197</b>	<b>7.2%</b>	<b>4,123,083</b>	<b>28.8%</b>

## BUS RIDERSHIP BY ROUTE SERVICE TYPE LINEUPS COMPARISON (MONTH-OVER-MONTH)

Boardings by Service Type and Route	Average Weekday	Average Weekday	Percent Change	Average Saturday	Average Saturday	Percent Change	Average Sunday	Average Sunday	Percent Change	Total Monthly	Total Monthly	Percent Change
	May-24	Apr-24	MOM	May-24	Apr-24	MOM	May-24	Apr-24	MOM	May-24	Apr-24	MOM
<b>Directly Operated Express Routes</b>												
34 TRANSITWAY EXPRESS	1,843	1,897	-2.9%							40,539	41,739	-2.9%
39 TRANSITWAY EXPRESS	816	858	-4.9%							17,956	18,878	-4.9%
95-EXPRESS GOLDEN GLADES	1,381	1,438	-3.9%							30,391	31,628	-3.9%
150-MIAMI BEACH AIRPORT EXPRESS	1,530	1,707	-10.4%	1,619	1,673	-3.2%	1,405	1,436	-2.1%	47,153	49,977	-5.7%
338 - WEEKEND EXPRESS				176	175	0.6%	131	188	-30.3%	1,357	1,450	-6.4%
836 EXPRESS	317	348	-8.8%							6,977	7,652	-8.8%
837 EXPRESS	214	206	3.8%							4,703	4,532	3.8%
<b>Subtotal Express Routes</b>	<b>6,101</b>	<b>6,453</b>	<b>-5.5%</b>	<b>1,795</b>	<b>1,848</b>	<b>-2.9%</b>	<b>1,535</b>	<b>1,623</b>	<b>-5.4%</b>	<b>149,076</b>	<b>155,856</b>	<b>-4.4%</b>
<b>Percentage of All Bus Routes</b>	<b>3.1%</b>	<b>3.1%</b>		<b>1.4%</b>	<b>1.3%</b>		<b>1.7%</b>	<b>1.7%</b>		<b>2.8%</b>	<b>2.8%</b>	
<b>Contracted Routes - Local Service (*)</b>												
2	2,208	2,177	1.4%	1,051	1,227	-14.4%	823	761	8.1%	56,887	55,846	1.9%
15	554	494	12.1%	338	325	4.0%	312	258	21.1%	15,091	13,191	14.4%
29												
46 - LIBERTY CITY CONN.												
56	558	620	-10.0%	271	252					13,352	14,641	-8.8%
70	302	296	2.2%	202	184		158	144		8,247	7,820	5.5%
72	952	953	-0.1%	521	518	0.6%	395	432	-8.5%	25,006	24,770	1.0%
82 - WESTCHESTER CIRC												
97	227	234	-3.0%	183	175	4.7%	146	161	-9.1%	6,455	6,489	-0.5%
115											0	
152	402	411	-2.1%	248	244	1.5%	171	165	3.6%	10,691	10,671	0.2%
155 - BISCAYNE GARDENS CIRC												
202 - LITTLE HAITI CONN												
211 OVERTOWN CIRCULATOR												
212-SWEETWATER CIRC												
217 - BUNCHE PARK CIRC												
254-BROWNSVILLE CIRC												
267-LUDLAM LIMITED												
286-NORTH POINTE CIRC												
344	131	113	15.5%	69	77					3,151	2,797	12.7%
401 - NORTH OWL	63	73	-13.2%	64	81	-20.2%	71	85	-17.2%	1,996	2,259	-11.6%
<b>Subtotal Contracted Reg. &amp; Circ. Routes</b>	<b>5,396</b>	<b>5,370</b>	<b>0.5%</b>	<b>2,946</b>	<b>3,082</b>	<b>-4.4%</b>	<b>2,075</b>	<b>2,006</b>	<b>3.5%</b>	<b>140,876</b>	<b>138,484</b>	<b>1.7%</b>
<b>Percentage of All Bus Routes</b>	<b>2.7%</b>	<b>2.6%</b>		<b>2.3%</b>	<b>2.2%</b>		<b>2.2%</b>	<b>2.1%</b>		<b>2.7%</b>	<b>2.5%</b>	

(1) Several express routes were suspended beginning at the end of March 2020, due to the SARS-CoV-2 pandemic, while other routes had alignment and schedule modifications made to them, in an ongoing effort to optimize service delivery.

(2) A second major round of changes took place with the 11/13/23 lineup known as the Better Bus Network, as listed at the start of this Metrobus section.

## BUS RIDERSHIP BY ROUTE SERVICE TYPE LINEUPS COMPARISON (MONTH-OVER-MONTH)

Boardings by Service Type and Route	Average Weekday	Average Weekday	Percent Change	Average Saturday	Average Saturday	Percent Change	Average Sunday	Average Sunday	Percent Change	Total Monthly	Total Monthly	Percent Change
	May-24	Apr-24	MOM	May-24	Apr-24	MOM	May-24	Apr-24	MOM	May-24	Apr-24	MOM
<b>Contracted Express Routes</b>												
301-DADE MONROE EXPRESS	1,027	1,037	-0.9%	949	937	1.3%	881	873	0.9%	30,799	30,051	2.5%
302-CARD SOUND EXPRESS	104	103	1.6%	106	108	-1.6%	96	90	7.3%	3,196	3,046	4.9%
<b>Subtotal Contracted Express Routes</b>	<b>1,131</b>	<b>1,140</b>	<b>-0.7%</b>	<b>1,055</b>	<b>1,044</b>	<b>1.0%</b>	<b>977</b>	<b>963</b>	<b>1.5%</b>	<b>33,995</b>	<b>33,097</b>	<b>2.7%</b>
<b>Percentage of All Bus Routes</b>	<b>0.6%</b>	<b>0.5%</b>		<b>0.8%</b>	<b>0.8%</b>		<b>1.1%</b>	<b>1.0%</b>		<b>0.6%</b>	<b>0.6%</b>	
<b>Limited Stop Routes</b>												
24-CORAL WAY LIMITED	2,405	2,648	-9.2%	1,733	1,953	-11.3%	1,156	1,252	-7.7%	65,619	71,078	-7.7%
38 TRANSITWAY MAX	7,453	7,390	0.8%	6,000	6,596	-9.0%	4,691	5,236	-10.4%	211,416	209,908	0.7%
203 - BISCAYNE MAX	1,257	1,336	-5.9%							27,657	29,391	-5.9%
204 KILLIAN MAX	622	658	-5.4%							13,689	14,472	-5.4%
211 - FLAGLER MAX	1,628	1,898	-14.2%							35,813	41,762	-14.2%
241 TUTTLE LIMITED												
272 SUNSET MAX (*)	409	403	1.6%							9,006	8,861	1.6%
277-7TH AVENUE MAX												
279 - 79 STREET MAX	636	847	-25.0%							13,983	18,636	-25.0%
287-SAGA BAY MAX	439	404	8.7%							9,660	8,884	8.7%
288 KENDALL MAX	487	537	-9.2%							10,721	11,805	-9.2%
297-27th AVENUE ORANGE MAX												
<b>Subtotal Limited Stop Routes</b>	<b>15,336</b>	<b>16,120</b>	<b>-4.9%</b>	<b>7,733</b>	<b>8,549</b>	<b>-9.5%</b>	<b>5,847</b>	<b>6,488</b>	<b>-9.9%</b>	<b>397,564</b>	<b>414,797</b>	<b>-4.2%</b>
<b>Percentage of All Bus Routes</b>	<b>7.8%</b>	<b>7.7%</b>		<b>6.1%</b>	<b>6.2%</b>		<b>6.3%</b>	<b>6.9%</b>		<b>7.5%</b>	<b>7.5%</b>	
<b>Directly Operated Free Routes</b>												
132 -TRI-RAIL DORAL SHUTTLE	42	42	-0.9%							921	929	-0.9%
500 - CUTLER BAY LOCAL	278	288	-3.5%	245	281	-12.8%	93	107	-13.3%	7,567	7,894	-4.1%
510 - SKYLAKE CIRCULATOR (*)	462	464	-0.6%	293	329	-10.9%	302	276	9.6%	12,839	12,631	1.6%
<b>Subtotal Free Directly Operated Routes</b>	<b>782</b>	<b>795</b>	<b>-1.6%</b>	<b>538</b>	<b>609</b>	<b>-11.8%</b>	<b>395</b>	<b>383</b>	<b>3.2%</b>	<b>21,327</b>	<b>21,454</b>	<b>-0.6%</b>
<b>Percentage of All Bus Routes</b>	<b>0.4%</b>	<b>0.4%</b>		<b>0.4%</b>	<b>0.4%</b>		<b>0.4%</b>	<b>0.4%</b>		<b>0.4%</b>	<b>0.4%</b>	
<b>Contractor-Operated Lifeline Routes</b>												
GREEN HILLS SHUTTLE	7	8	-12.5%							21	40	-47.5%
KINGS CREEK SHUTTLE	10	10	3.2%							49	38	28.9%
SIERRA LAKES SHUTTLE	20	22	-8.2%							101	88	14.8%
ROBERT SHARP SHUTTLE	30	27	14.0%							151	106	42.5%
AHEPA SHUTTLE	20	17	15.9%							100	69	44.9%
FEDERATION GARDENS SHUTTLE				31	30	4.2%				125	120	4.2%
<b>Subtotal Contractor-Operated Lifeline Routes</b>	<b>87</b>	<b>83</b>	<b>4.7%</b>	<b>31</b>	<b>30</b>	<b>4.2%</b>				<b>547</b>	<b>461</b>	<b>18.7%</b>
<b>Percentage of All Bus Routes</b>	<b>0.0%</b>	<b>0.0%</b>		<b>0.0%</b>	<b>0.0%</b>					<b>0.0%</b>	<b>0.0%</b>	
<b>All Other (Regular) Routes</b>	<b>168,479</b>	<b>179,948</b>	<b>-6.4%</b>	<b>112,275</b>	<b>123,202</b>	<b>-8.9%</b>	<b>81,938</b>	<b>83,198</b>	<b>-1.5%</b>	<b>4,565,326</b>	<b>4,784,465</b>	<b>-4.6%</b>
<b>Percentage of All Bus Routes</b>	<b>85.4%</b>	<b>85.7%</b>		<b>88.8%</b>	<b>89.0%</b>		<b>88.3%</b>	<b>87.9%</b>		<b>86.0%</b>	<b>86.2%</b>	
<b>Total Bus System</b>	<b>197,313</b>	<b>209,910</b>	<b>-6.0%</b>	<b>126,372</b>	<b>138,364</b>	<b>-8.7%</b>	<b>92,768</b>	<b>94,659</b>	<b>-2.0%</b>	<b>5,308,711</b>	<b>5,548,614</b>	<b>-4.3%</b>

## BUS RIDERSHIP BY ROUTE SERVICE TYPE LINEUPS COMPARISON (MONTH-OVER-7 MONTH)

Boardings by Service Type and Route	Average Weekday	Average Weekday	Percent Change	Average Saturday	Average Saturday	Percent Change	Average Sunday	Average Sunday	Percent Change	Total Monthly	Total Monthly	Percent Change
	May-24	Oct-23	24 vs 23	May-24	Oct-23	24 vs 23	May-24	Oct-23	24 vs 23	May-24	Oct-23	24 vs 23
<b>Directly Operated Express Routes</b>												
34 TRANSITWAY EXPRESS	1,843	1,636	12.6%							40,539	36,002	12.6%
39 TRANSITWAY EXPRESS	816	742	9.9%							17,956	16,333	9.9%
95-EXPRESS GOLDEN GLADES	1,381	1,195	15.6%							30,391	26,295	15.6%
150-MIAMI BEACH AIRPORT EXPRESS	1,530	2,149	-28.8%	1,619	2,161	-25.1%	1,405	1,966	-28.6%	47,153	65,763	-28.3%
338 - WEEKEND EXPRESS				176	259	-32.1%	131	247	-47.2%	1,357	2,274	-40.3%
836 EXPRESS	317	247	28.5%							6,977	5,428	28.5%
837 EXPRESS	214	195	9.9%							4,703	4,281	9.9%
<b>Subtotal Express Routes</b>	<b>6,101</b>	<b>6,165</b>	<b>-1.0%</b>	<b>1,795</b>	<b>2,420</b>	<b>-25.9%</b>	<b>1,535</b>	<b>2,214</b>	<b>-30.6%</b>	<b>149,076</b>	<b>156,376</b>	<b>-4.7%</b>
<b>Percentage of All Bus Routes</b>	<b>3.1%</b>	<b>3.3%</b>		<b>1.4%</b>	<b>2.3%</b>		<b>1.7%</b>	<b>2.7%</b>		<b>2.8%</b>	<b>3.2%</b>	
<b>Contracted Routes - Local Service (*)</b>												
2	2,208	2,977	-25.8%	1,051	1,605	-34.6%	823	1,214	-32.2%	56,887	77,976	-27.0%
15	554	178	211.8%	338	93	261.9%	312	53	488.3%	15,091	4,545	232.0%
29		516									11,342	
46 - LIBERTY CITY CONN.		22									477	
56	558	391	42.7%	271						13,352	8,598	55.3%
70	302	161	87.6%	202			158			8,247	3,546	132.6%
72	952	670	42.1%	521	357	46.1%	395	259	52.5%	25,006	17,459	43.2%
82 - WESTCHESTER CIRC		61			38						1,488	
97	227	225	1.0%	183	163	12.3%	146	149	-1.7%	6,455	6,337	1.9%
115		151			80			66			3,968	
152	402	1,051	-61.7%	248	375	-33.9%	171	331	-48.5%	10,691	26,285	-59.3%
155 - BISCAYNE GARDENS CIRC		45									985	
202 - LITTLE HAITI CONN		110			22			21			2,620	
211 OVERTOWN CIRCULATOR		71									1,567	
212-SWEETWATER CIRC		22									494	
217 - BUNCHE PARK CIRC		80									1,759	
254-BROWNSVILLE CIRC		5									105	
267-LUDLAM LIMITED		162									3,567	
286-NORTH POINTE CIRC		93		0	61						2,279	
344	131	76	72.6%	69						3,151	1,666	89.1%
401 - NORTH OWL	63	61	3.9%	64	61	6.2%	71	65	9.3%	1,996	1,899	5.1%
<b>Subtotal Contracted Reg. &amp; Circ. Routes</b>	<b>5,396</b>	<b>7,125</b>	<b>-24.3%</b>	<b>2,946</b>	<b>2,854</b>	<b>3.2%</b>	<b>2,075</b>	<b>2,158</b>	<b>-3.8%</b>	<b>140,876</b>	<b>178,962</b>	<b>-21.3%</b>
<b>Percentage of All Bus Routes</b>	<b>2.7%</b>	<b>3.8%</b>		<b>2.3%</b>	<b>2.7%</b>		<b>2.2%</b>	<b>2.7%</b>		<b>2.7%</b>	<b>3.6%</b>	

(1) Several express routes were suspended beginning at the end of March 2020, due to the SARS-CoV-2 pandemic, while other routes had alignment and schedule modifications made to them, in an ongoing effort to optimize service delivery.

(2) A second major round of changes took place with the 11/13/23 lineup known as the Better Bus Network, as listed at the start of this Metrobus section.

## BUS RIDERSHIP BY ROUTE SERVICE TYPE LINEUPS COMPARISON (MONTH-OVER-7 MONTH)

Boardings by Service Type and Route	Average Weekday	Average Weekday	Percent Change	Average Saturday	Average Saturday	Percent Change	Average Sunday	Average Sunday	Percent Change	Total Monthly	Total Monthly	Percent Change
	May-24	Oct-23	24 vs 23	May-24	Oct-23	24 vs 23	May-24	Oct-23	24 vs 23	May-24	Oct-23	24 vs 23
<b>Contracted Express Routes</b>												
301-DADE MONROE EXPRESS	1,027	955	7.5%	949	885	7.2%	881	867	1.7%	30,799	28,889	6.6%
302-CARD SOUND EXPRESS	104	91	14.9%	106	94	12.8%	96	72	34.1%	3,196	2,728	17.2%
<b>Subtotal Contracted Express Routes</b>	<b>1,131</b>	<b>1,046</b>	<b>8.2%</b>	<b>1,055</b>	<b>979</b>	<b>7.7%</b>	<b>977</b>	<b>938</b>	<b>4.1%</b>	<b>33,995</b>	<b>31,617</b>	<b>7.5%</b>
<b>Percentage of All Bus Routes</b>	<b>0.6%</b>	<b>0.6%</b>		<b>0.8%</b>	<b>0.9%</b>		<b>1.1%</b>	<b>1.2%</b>		<b>0.6%</b>	<b>0.6%</b>	
<b>Limited Stop Routes</b>												
24-CORAL WAY LIMITED	2,405	2,195	9.6%	1,733	1,400	23.7%	1,156	1,108	4.3%	65,619	59,432	10.4%
38 TRANSITWAY MAX	7,453	5,714	30.4%	6,000	6,328	-5.2%	4,691	4,957	-5.4%	211,416	175,803	20.3%
203 - BISCAYNE MAX	1,257	3,666	-65.7%							27,657	80,650	-65.7%
204 KILLIAN MAX	622	620	0.4%							13,689	13,632	0.4%
211 - FLAGLER MAX	1,628	3,824	-57.4%							35,813	84,135	-57.4%
241 TUTTLE LIMITED		348			222			187			9,471	
272 SUNSET MAX (*)	409	428	-4.4%							9,006	9,423	-4.4%
277-7TH AVENUE MAX		879									19,345	
279 - 79 STREET MAX	636	469	35.5%							13,983	10,318	35.5%
287-SAGA BAY MAX	439	341	28.8%							9,660	7,499	28.8%
288 KENDALL MAX	487	372	30.9%							10,721	8,189	30.9%
297-27th AVENUE ORANGE MAX		1,229									27,047	
<b>Subtotal Limited Stop Routes</b>	<b>15,336</b>	<b>20,086</b>	<b>-23.6%</b>	<b>7,733</b>	<b>7,950</b>	<b>-2.7%</b>	<b>5,847</b>	<b>6,252</b>	<b>-6.5%</b>	<b>397,564</b>	<b>504,944</b>	<b>-21.3%</b>
<b>Percentage of All Bus Routes</b>	<b>7.8%</b>	<b>10.8%</b>		<b>6.1%</b>	<b>7.4%</b>		<b>6.3%</b>	<b>7.7%</b>		<b>7.5%</b>	<b>10.3%</b>	
<b>Directly Operated Free Routes</b>												
132 - TRI-RAIL DORAL SHUTTLE	42	37	14.6%							921	804	14.6%
500 - CUTLER BAY LOCAL	278	176	58.3%	245	152	61.3%	93	86	7.4%	7,567	4,907	54.2%
510 - SKYLAKE CIRCULATOR (*)	462	471	-2.1%	293	217	34.8%	302	194	55.6%	12,839	12,211	5.1%
<b>Subtotal Free Directly Operated Routes</b>	<b>782</b>	<b>684</b>	<b>14.4%</b>	<b>538</b>	<b>369</b>	<b>45.7%</b>	<b>395</b>	<b>280</b>	<b>40.8%</b>	<b>21,327</b>	<b>17,922</b>	<b>19.0%</b>
<b>Percentage of All Bus Routes</b>	<b>0.4%</b>	<b>0.4%</b>		<b>0.4%</b>	<b>0.3%</b>		<b>0.4%</b>	<b>0.3%</b>		<b>0.4%</b>	<b>0.4%</b>	
<b>Contractor-Operated Lifeline Routes</b>												
GREEN HILLS SHUTTLE	7	5	34.6%							21	26	-19.2%
KINGS CREEK SHUTTLE	10	14	-28.7%							49	55	-10.9%
SIERRA LAKES SHUTTLE	20	16	30.3%							101	62	62.9%
ROBERT SHARP SHUTTLE	30	23	31.3%							151	92	64.1%
AHEPA SHUTTLE	20	18	12.7%							100	71	40.8%
FEDERATION GARDENS SHUTTLE				31	20	56.3%				125	80	56.3%
<b>Subtotal Contractor-Operated Lifeline Routes</b>	<b>87</b>	<b>75</b>	<b>16.0%</b>	<b>31</b>	<b>20</b>	<b>56.3%</b>				<b>547</b>	<b>386</b>	<b>41.7%</b>
<b>Percentage of All Bus Routes</b>	<b>0.0%</b>	<b>0.0%</b>		<b>0.0%</b>	<b>0.0%</b>					<b>0.0%</b>	<b>0.0%</b>	
<b>All Other (Regular) Routes</b>	<b>168,479</b>	<b>150,140</b>	<b>12.2%</b>	<b>112,275</b>	<b>92,739</b>	<b>21.1%</b>	<b>81,938</b>	<b>69,584</b>	<b>17.8%</b>	<b>4,565,326</b>	<b>4,021,944</b>	<b>13.5%</b>
<b>Percentage of All Bus Routes</b>	<b>85.4%</b>	<b>81.0%</b>		<b>88.8%</b>	<b>86.4%</b>		<b>88.3%</b>	<b>85.5%</b>		<b>86.0%</b>	<b>81.9%</b>	
<b>Total Bus System</b>	<b>197,313</b>	<b>185,320</b>	<b>6.5%</b>	<b>126,372</b>	<b>107,331</b>	<b>17.7%</b>	<b>92,768</b>	<b>81,427</b>	<b>13.9%</b>	<b>5,308,711</b>	<b>4,912,151</b>	<b>8.1%</b>

## Bus Routes as Ranked by Percentage of Average Weekday Ridership May 2024

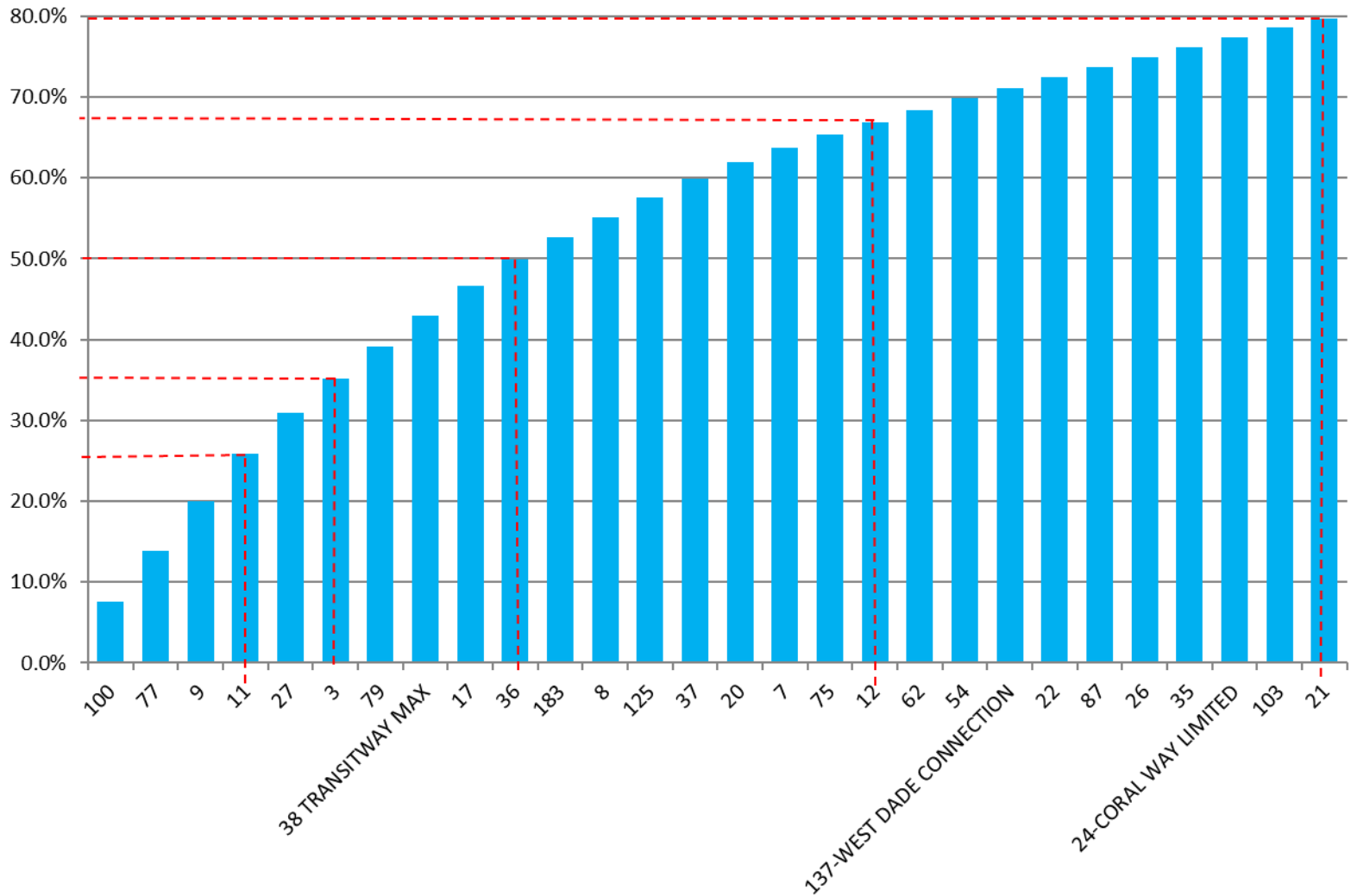
Rank	Route	Average Weekday	Percent Share	Cumul Pct Share	Rank	Route	Average Weekday	Percent Share	Cumul Pct Share	Rank	Route	Average Weekday	Percent Share	Cumul Pct Share
1	100	14,955	7.6%	7.6%	29	24	2,405	1.2%	77.3%	57	272	409	0.2%	98.8%
2	77	12,434	6.3%	13.9%	30	new 103	2,340	1.2%	78.5%	58	152	402	0.2%	99.0%
3	9	12,065	6.1%	20.0%	31	107	2,143	1.1%	83.0%	59	836	317	0.2%	99.1%
4	11	11,464	5.8%	25.8%	32	135	2,141	1.1%	84.1%	60	70	302	0.2%	99.3%
5	27	9,982	5.1%	30.9%	33	88	2,032	1.0%	85.1%	61	500	278	0.1%	99.4%
6	3	8,339	4.2%	35.1%	34	40	2,002	1.0%	86.1%	62	97	227	0.1%	99.5%
7	79	7,981	4.0%	39.1%	35	34	1,843	0.9%	87.0%	63	837	214	0.1%	99.7%
8	38	7,453	3.8%	42.9%	36	32	1,792	0.9%	88.0%	64	136	164	0.1%	99.7%
9	17	7,392	3.7%	46.7%	37	52	1,737	0.9%	88.8%	65	344	131	0.1%	99.8%
10	36	6,392	3.2%	49.9%	38	207	1,655	0.8%	89.7%	66	302	104	0.1%	99.9%
11	183	5,419	2.7%	52.6%	39	new 211	1,628	0.8%	90.5%	67	400	84	0.0%	99.9%
12	8	4,910	2.5%	55.1%	40	208	1,585	0.8%	91.3%	68	401	63	0.0%	99.9%
13	125	4,844	2.5%	57.6%	41	150	1,530	0.8%	92.1%	69	132	42	0.0%	100.0%
14	37	4,633	2.3%	59.9%	42	73	1,437	0.7%	92.8%	70	RS	30	0.0%	100.0%
15	20	3,850	2.0%	61.9%	43	95	1,381	0.7%	93.5%	71	SL	20	0.0%	100.0%
16	7	3,635	1.8%	63.7%	44	203	1,257	0.6%	94.1%	72	AS	20	0.0%	100.0%
17	75	3,172	1.6%	65.3%	45	104	1,234	0.6%	94.8%	73	KC	10	0.0%	100.0%
18	12	3,012	1.5%	66.9%	46	301	1,027	0.5%	95.3%	74	GH	7	0.0%	100.0%
19	62	2,952	1.5%	68.4%	47	14	953	0.5%	95.8%	entirely contracted in May-24				
20	54	2,927	1.5%	69.8%	48	72	952	0.5%	96.3%					
21	137	2,523	1.3%	71.1%	49	39	816	0.4%	96.7%					
22	22	2,515	1.3%	72.4%	50	279	636	0.3%	97.0%					
23	87	2,483	1.3%	73.7%	51	204	622	0.3%	97.3%					
24	26	2,445	1.2%	74.9%	52	56	558	0.3%	97.6%	entirely contracted in May-24				
25	35	2,429	1.2%	76.1%	53	15	554	0.3%	97.9%					
26	21	2,268	1.1%	79.7%	54	288	487	0.2%	98.1%					
27	2	2,208	1.1%	80.8%	55	510	462	0.2%	98.3%					
28	199	2,159	1.1%	81.9%	56	287	439	0.2%	98.6%					
										Total Boardings		197,313	100.00%	100.0%

(1) Average weekday ridership rounded to the nearest unit.

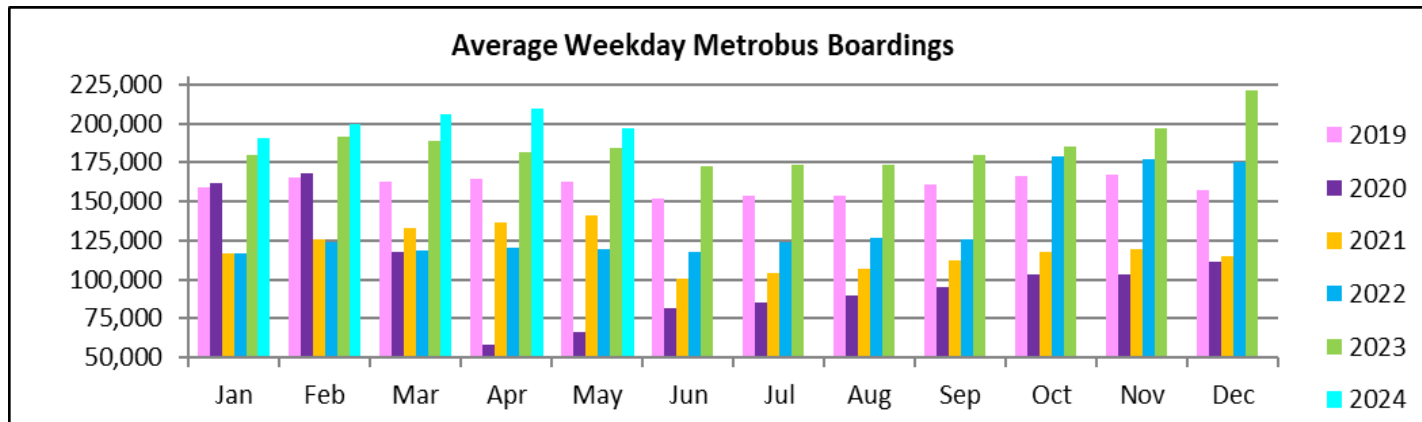
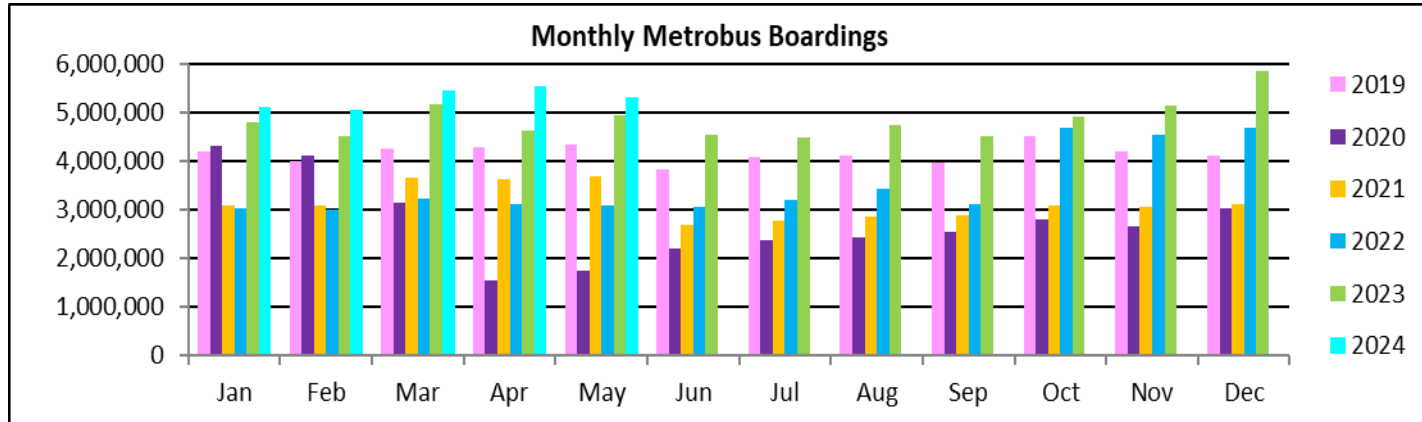
(2) Includes the five Lifeline Shuttles that operate on weekdays: Ahepa (AS), Green Hills (GH), Kings Creek (KC), Robert Sharp (RS) and Sierra Lakes (SL).



**Bus - Cumulative Percentage Average Weekday Ridership Share  
Top 1/4, 1/3, 1/2, 2/3 and 4/5 of Routes**



# **TOTAL MONTHLY AND AVERAGE WEEKDAY RIDERSHIP YEAR OVER YEAR COMPARISON CHARTS – METROBUS**



**“TOP 10 / BOTTOM 10” BUS ROUTES AVERAGE WEEKDAY RIDERSHIP PERFORMANCE  
MONTH OVER MONTH COMPARISON**

Route	May-24	Apr-24	Absolute Delta	Percent Delta
<b>21</b>	2,268	2,152	117	5.4%
<b>199</b>	2,159	2,091	68	3.2%
<b>38 TRANSITWAY MAX</b>	7,453	7,390	63	0.8%
<b>15</b>	554	494	60	12.1%
<b>287-SAGA BAY MAX</b>	439	404	35	8.7%
<b>2</b>	2,208	2,177	31	1.4%
<b>344</b>	131	113	18	15.5%
<b>837 EXPRESS</b>	214	206	8	3.8%
<b>103</b>	2,340	2,332	7	0.3%
<b>272 SUNSET MAX (*)</b>	409	403	7	1.6%

<b>100</b>	14,955	18,101	-3,145	-17.4%
<b>11</b>	11,464	12,686	-1,222	-9.6%
<b>79</b>	7,981	9,076	-1,096	-12.1%
<b>7</b>	3,635	4,215	-581	-13.8%
<b>20</b>	3,850	4,383	-534	-12.2%
<b>3</b>	8,339	8,871	-532	-6.0%
<b>36</b>	6,392	6,880	-488	-7.1%
<b>125</b>	4,844	5,300	-456	-8.6%
<b>37</b>	4,633	5,032	-399	-7.9%
<b>27</b>	9,982	10,379	-397	-3.8%

(\*) Averages rounded to the nearest boarding, data as estimated from automatic passenger counter (APC) system; Lifeline shuttles excluded.

# **“TOP 10 / BOTTOM 10” BUS ROUTES SETS AVERAGE WEEKDAY RIDERSHIP PERFORMANCE YEAR OVER YEAR COMPARISON**

Route Set (*), (1), (2)	May-24	May-23	Absolute Delta	Percent Delta	routes included in set
<b>{ 17 &amp; 22 &amp; 75 }</b>	13,079	10,246	2,833	27.6%	<b>17, 22, 75, 108, 217</b>
<b>{ 11 }</b>	11,464	8,658	2,807	32.4%	<b>11, 212</b>
<b>{ 20 }</b>	5,642	2,874	2,768	96.3%	<b>20, 32, 115</b>
<b>{ 77 }</b>	12,434	9,910	2,524	25.5%	<b>77, 277</b>
<b>{ 27 }</b>	9,982	8,313	1,669	20.1%	<b>27, 297</b>
<b>{ 9 }</b>	12,065	10,477	1,588	15.2%	<b>9, 10, 16</b>
<b>{ new 107 }</b>	5,432	4,022	1,409	35.0%	<b>35, 56, 70, 71, new 107, 248</b>
<b>{ 125 }</b>	4,844	3,667	1,177	32.1%	<b>19, 107, 125</b>
<b>{ 62 }</b>	2,952	1,914	1,037	54.2%	<b>62, 202</b>
<b>{ 3 &amp; 203 }</b>	9,596	9,002	594	6.6%	<b>3, 93, 203</b>
<b>{ 100 }</b>	14,955	17,495	-2,540	-14.5%	<b>100, 105, 119, 120</b>
<b>{ new 211 }</b>	11,466	13,478	-2,011	-14.9%	<b>8, 24, 51, 82, 137, new 211</b>
<b>{ 73 &amp; 183 }</b>	6,856	8,239	-1,383	-16.8%	<b>57, 73, 183, 238, 267, 286</b>
<b>{ 37 &amp; 54 }</b>	7,560	8,401	-841	-10.0%	<b>29, 37, 42, 54, 254</b>
<b>{ 2 }</b>	2,208	3,011	-804	-26.7%	<b>2</b>
<b>150</b>	1,530	2,210	-680	-30.8%	<b>150</b>
<b>{ 279 }</b>	8,616	9,192	-575	-6.3%	<b>79, 112, 279</b>
<b>88</b>	2,032	2,472	-441	-17.8%	<b>88</b>
<b>40</b>	2,002	2,374	-372	-15.7%	<b>40</b>
<b>{ 14 }</b>	953	1,305	-353	-27.0%	<b>14, 113, 241</b>

(\*) Averages rounded to the nearest boarding, data as estimated from automatic passenger counter (APC) system; Lifeline shuttles excluded.

(1) The route sets, denoted by brackets, include the new 11/13/2023 lineup's Better Bus Network route designations, as well as older routes present for the first part of the month and previous months and years, then either renamed, absorbed, or eliminated. The sets were defined to enable reasonably fair comparisons between pre- and post-BBN timeframes, to the extent possible and practical, given the complexity of the changes for some of the routes and sets. The definitions are based on information from the DTPW website, and subject to future adjustments, if necessary.

(2) The adjective "new" in front of some new Better Bus Network-generated (recycled) route numbers was added to help prevent confusion with older but different routes with the same number present in previous months or years.

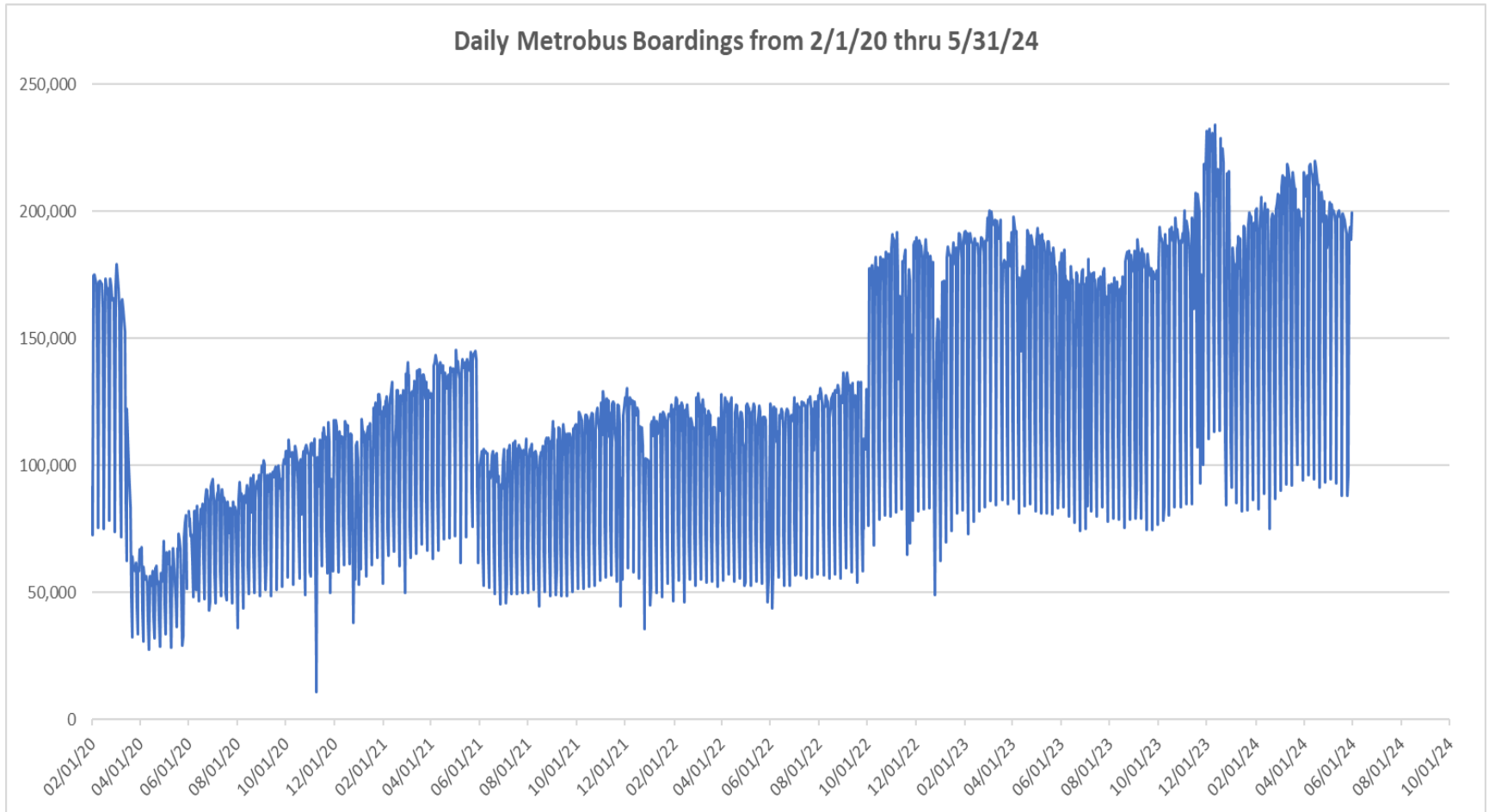
# **“TOP 10 / BOTTOM 10” BUS ROUTES SETS AVERAGE WEEKDAY RIDERSHIP PERFORMANCE MONTH OVER 7-MONTH PRIOR COMPARISON**

Route Set (*), (1), (2)	May-24	Oct-23	Absolute Delta	Percent Delta	routes included in set
<b>{ 20 }</b>	5,642	2,850	2,792	98.0%	<b>20, 32, 115</b>
<b>{ 17 &amp; 22 &amp; 75 }</b>	13,079	10,796	2,284	21.2%	<b>17, 22, 75, 108, 217</b>
<b>{ 11 }</b>	11,464	9,644	1,821	18.9%	<b>11, 212</b>
<b>{ 38 }</b>	7,583	5,790	1,794	31.0%	<b>38, 344</b>
<b>{ 27 }</b>	9,982	8,339	1,643	19.7%	<b>27, 297</b>
<b>{ 77 }</b>	12,434	10,838	1,596	14.7%	<b>77, 277</b>
<b>{ 9 }</b>	12,065	10,942	1,123	10.3%	<b>9, 10, 16</b>
<b>{ new 107 }</b>	5,432	4,447	985	22.1%	<b>35, 56, 70, 71, new 107, 248</b>
<b>{ 125 }</b>	4,844	3,906	938	24.0%	<b>19, 107, 125</b>
<b>{ 36 }</b>	6,392	5,600	792	14.1%	<b>36, 110</b>
<b>{ 100 }</b>	14,955	17,117	-2,161	-12.6%	<b>100, 105, 119, 120</b>
<b>{ new 211 }</b>	11,466	12,849	-1,383	-10.8%	<b>8, 24, 51, 82, 137, new 211</b>
<b>{ 73 &amp; 183 }</b>	6,856	7,890	-1,034	-13.1%	<b>57, 73, 183, 238, 267, 286</b>
<b>{ 2 }</b>	2,208	3,048	-840	-27.6%	<b>2</b>
<b>150</b>	1,530	2,149	-620	-28.8%	<b>150</b>
<b>{ 37 &amp; 54 }</b>	7,560	8,082	-522	-6.5%	<b>29, 37, 42, 54, 254</b>
<b>88</b>	2,032	2,419	-387	-16.0%	<b>88</b>
<b>7</b>	3,635	4,021	-386	-9.6%	<b>7</b>
<b>40</b>	2,002	2,344	-343	-14.6%	<b>40</b>
<b>{ 279 }</b>	8,616	8,950	-334	-3.7%	<b>79, 112, 279</b>

(\*) Averages rounded to the nearest boarding, data as estimated from automatic passenger counter (APC) system; Lifeline shuttles excluded.

- (1) The route sets, denoted by brackets, include the new 11/13/2023 lineup's Better Bus Network route designations, as well as older routes present for the first part of the month and previous months and years, then either renamed, absorbed, or eliminated. The sets were defined to enable reasonably fair comparisons between pre- and post-BBN timeframes, to the extent possible and practical, given the complexity of the changes for some of the routes and sets. The definitions are based on information from the DTPW website, and subject to future adjustments, if necessary.
- (2) The adjective "new" in front of some new Better Bus Network-generated (recycled) route numbers was added to help prevent confusion with older but different routes with the same number present in previous months or years.

## DAILY METROBUS RIDERSHIP SINCE FEBRUARY 1, 2020



- (1) There was no Metrobus, Metrorail and Metromover service on 5/31/20, as a safety precaution, and no service for any of the four modes on 9/28/22, as a result of Hurricane Ian.
- (2) The dip at the start of the second week of November 2020 is due to Hurricane Eta.
- (3) Daily variations from October 2022 onward are estimated from reports made available by the Bus APC data vendor; the data is based on statistical sampling.
- (4) The reduction seen beginning 6/1/21 is partly due to the resumption of fares and partly the result of resuming reporting Cubic farebox data rather than bus APC counts; the jump seen at the start of October 2022 is due to the return to APC bus ridership counts reporting beginning 10/1/22; the marked peak in Dec 2023 is attributable to the Better Bus Network launch period and attendant free fares.
- (5) Periodic (weekly) variations are prominent, since weekday ridership is almost always significantly higher than weekend or holiday ridership.

# METROBUS PARKING PATRONAGE SUMMARY

## May 2024

PARK-RIDE LOT	ACTUAL AVAILABLE SPACES	ACTUAL OCCUPANCY	PERCENT OCCUPANCY
Transitway / SW 152nd St	200	131	66%
Transitway / SW 168th St (*)	149		0%
Transitway / SW 200th Street	100	32	32%
Transitway / SW 112 Ave (Target)	450	142	32%
Transitway / SW 244th St	95	76	80%
Transitway / SW 296th St	139	27	19%
Transitway / SW 344th St	248	183	74%
Coral Reef Drive 117/ Turnpike	95	82	86%
Golden Glades Facility	2,150	346	16%
Hammocks Town Center (SW 152 Ave / SW 104 St)	50	21	42%
Kendall Dr./SW 127th Ave	161	9	6%
West Kendall Transit Term (Kendall Dr / SW162 Ave)	40	24	60%
NW 7th Avenue Transit Village (NW 7 Ave / NW 62 St)	25	23	92%
Miami Gardens Dr. / NW 73rd Ave	136	2	1%
Dolphin Station	348	84	24%
Tamiami Station (eff 11-2022)	442	61	14%
I-75 / Miami Gardens Dr (**)	298		0%
<b>TOTAL</b>	<b>5,126</b>	<b>1,243</b>	<b>24%</b>

(\*) Closed for construction beginning March 2022

(\*\*) Route 175 Suspended 3/27/2020

# Metrorail



May 2024



## METRORAIL AVERAGE WEEKDAY BOARDINGS BY STATION (†)

<b>Weekdays</b>	<b>Average Weekday</b>	<b>Average Weekday</b>	<b>Percent Change</b>	<b>Average Weekday</b>	<b>Percent Change</b>	<b>Average Weekday</b>	<b>Percent Change</b>	<b>Average Weekday</b>	<b>Percent Change</b>
<b>STATIONS</b>	<b>May-24</b>	<b>May-23</b>	<b>YOY</b>	<b>Feb-20</b>	<b>Current vs Feb-20</b>	<b>Apr-24</b>	<b>MOM</b>	<b>May-19</b>	<b>YO5Y</b>
ALLAPATTAH	1,727	1,634	5.7%	1,942	-11.1%	1,757	-1.7%	1,778	-2.8%
BRICKELL	5,532	5,079	8.9%	6,529	-15.3%	5,677	-2.6%	6,024	-8.2%
BROWNSVILLE	594	671	-11.5%	862	-31.1%	584	1.6%	818	-27.4%
CIVIC CENTER	4,615	4,027	14.6%	6,143	-24.9%	4,421	4.4%	5,579	-17.3%
COCONUT GROVE	1,856	1,470	26.3%	1,795	3.4%	1,863	-0.4%	1,583	17.2%
CULMER	1,020	1,062	-4.0%	1,392	-26.7%	1,022	-0.2%	1,189	-14.3%
DADELAND NORTH	4,276	4,013	6.5%	5,926	-27.9%	4,426	-3.4%	5,541	-22.8%
DADELAND SOUTH	4,767	4,537	5.1%	7,150	-33.3%	4,943	-3.6%	6,552	-27.2%
DOUGLAS ROAD	3,353	740	353.4%	3,624	-7.5%	3,566	-6.0%	3,467	-3.3%
DR. MARTIN LUTHER KING, JR.	969	839	15.5%	1,157	-16.2%	803	20.7%	1,070	-9.4%
EARLINGTON HEIGHTS	1,428	1,285	11.1%	1,662	-14.0%	1,477	-3.3%	1,475	-3.1%
GOVERNMENT CENTER	6,651	6,505	2.2%	10,557	-37.0%	6,809	-2.3%	9,468	-29.8%
HIALEAH	1,326	965	37.5%	1,253	5.8%	1,311	1.1%	1,201	10.4%
MIAMI INTERNATIONAL AIRPORT	1,426	1,343	6.2%	1,711	-16.6%	1,443	-1.2%	1,561	-8.6%
NORTHSIDE	1,385	1,298	6.7%	1,476	-6.1%	1,361	1.7%	1,324	4.6%
OKEECHOBEE	1,024	908	12.8%	1,164	-12.0%	1,052	-2.6%	1,141	-10.2%
OVERTOWN / ARENA	1,881	1,741	8.0%	2,274	-17.3%	1,994	-5.7%	2,074	-9.3%
PALMETTO	1,336	1,310	2.0%	1,543	-13.4%	1,354	-1.3%	1,420	-5.9%
SANTA CLARA	815	682	19.5%	812	0.4%	828	-1.5%	714	14.2%
SOUTH MIAMI	2,201	1,888	16.6%	3,015	-27.0%	2,318	-5.0%	2,791	-21.1%
TRI-RAIL	1,170	1,126	4.0%	1,207	-3.0%	1,194	-1.9%	1,083	8.1%
UNIVERSITY	1,531	1,445	5.9%	2,784	-45.0%	2,107	-27.3%	1,836	-16.6%
VIZCAYA	1,314	1,182	11.2%	1,390	-5.4%	1,347	-2.4%	1,264	4.0%
<b>TOTAL</b>	<b>52,199</b>	<b>45,749</b>	<b>14.1%</b>	<b>67,367</b>	<b>-22.5%</b>	<b>53,658</b>	<b>-2.7%</b>	<b>60,952</b>	<b>-14.4%</b>

(†) In this table and those which follow, "YOY" stands for "year-over-year", "MOM" for "month-over-month" and, e.g., "YO5Y" for "year over five years", i.e., current month vs 12 months prior, one month prior, and 60 months prior, respectively. The February 2020 numbers serve as a pre-pandemic benchmark.

## METRORAIL AVERAGE SATURDAY BOARDINGS BY STATION

<b>Saturdays</b>	<b>Average Saturday</b>	<b>Average Saturday</b>	<b>Percent Change</b>	<b>Average Saturday</b>	<b>Percent Change</b>	<b>Average Saturday</b>	<b>Percent Change</b>	<b>Average Saturday</b>	<b>Percent Change</b>
<b>STATIONS</b>	<b>May-24</b>	<b>May-23</b>	<b>YOY</b>	<b>Feb-20</b>	<b>Current vs Feb-20</b>	<b>Apr-24</b>	<b>MOM</b>	<b>May-19</b>	<b>YO5Y</b>
ALLAPATTAH	914	896	2.0%	1,051	-13.1%	914	-0.1%	1,000	-8.6%
BRICKELL	2,480	2,461	0.8%	2,811	-11.8%	2,728	-9.1%	2,656	-6.6%
BROWNSVILLE	343	429	-20.1%	520	-34.0%	334	2.7%	509	-32.6%
CIVIC CENTER	739	689	7.3%	959	-22.9%	769	-3.8%	902	-18.0%
COCONUT GROVE	924	838	10.3%	928	-0.5%	958	-3.5%	815	13.4%
CULMER	483	484	-0.3%	721	-33.0%	463	4.2%	627	-23.0%
DADELAND NORTH	1,380	1,426	-3.2%	1,994	-30.8%	1,475	-6.4%	1,806	-23.6%
DADELAND SOUTH	1,882	1,957	-3.8%	2,625	-28.3%	2,009	-6.3%	2,375	-20.8%
DOUGLAS ROAD	1,393	390	257.2%	1,319	5.6%	1,468	-5.1%	1,284	8.5%
DR. MARTIN LUTHER KING, JR.	578	467	23.7%	625	-7.5%	459	25.9%	615	-6.1%
EARLINGTON HEIGHTS	755	751	0.6%	935	-19.3%	791	-4.5%	844	-10.5%
GOVERNMENT CENTER	2,748	2,817	-2.4%	4,262	-35.5%	2,826	-2.8%	3,565	-22.9%
HIALEAH	596	472	26.3%	583	2.2%	618	-3.6%	567	5.0%
MIAMI INTERNATIONAL AIRPORT	1,039	976	6.5%	1,330	-21.9%	1,060	-2.0%	1,232	-15.7%
NORTHSIDE	794	820	-3.3%	878	-9.6%	789	0.6%	868	-8.6%
OKEECHOBEE	445	321	38.8%	408	9.0%	460	-3.2%	381	16.8%
OVERTOWN / ARENA	604	681	-11.3%	678	-11.0%	679	-11.1%	531	13.6%
PALMETTO	399	429	-6.9%	458	-12.9%	424	-5.8%	370	8.0%
SANTA CLARA	385	344	11.8%	422	-8.8%	398	-3.2%	412	-6.7%
SOUTH MIAMI	947	869	9.0%	1,256	-24.6%	1,037	-8.6%	1,143	-17.1%
TRI-RAIL	518	539	-3.8%	614	-15.7%	577	-10.2%	512	1.3%
UNIVERSITY	464	531	-12.5%	714	-35.0%	746	-37.7%	552	-15.9%
VIZCAYA	542	535	1.2%	622	-12.9%	632	-14.3%	559	-3.1%
<b>TOTAL</b>	<b>21,350</b>	<b>20,118</b>	<b>6.1%</b>	<b>26,714</b>	<b>-20.1%</b>	<b>22,611</b>	<b>-5.6%</b>	<b>24,122</b>	<b>-11.5%</b>

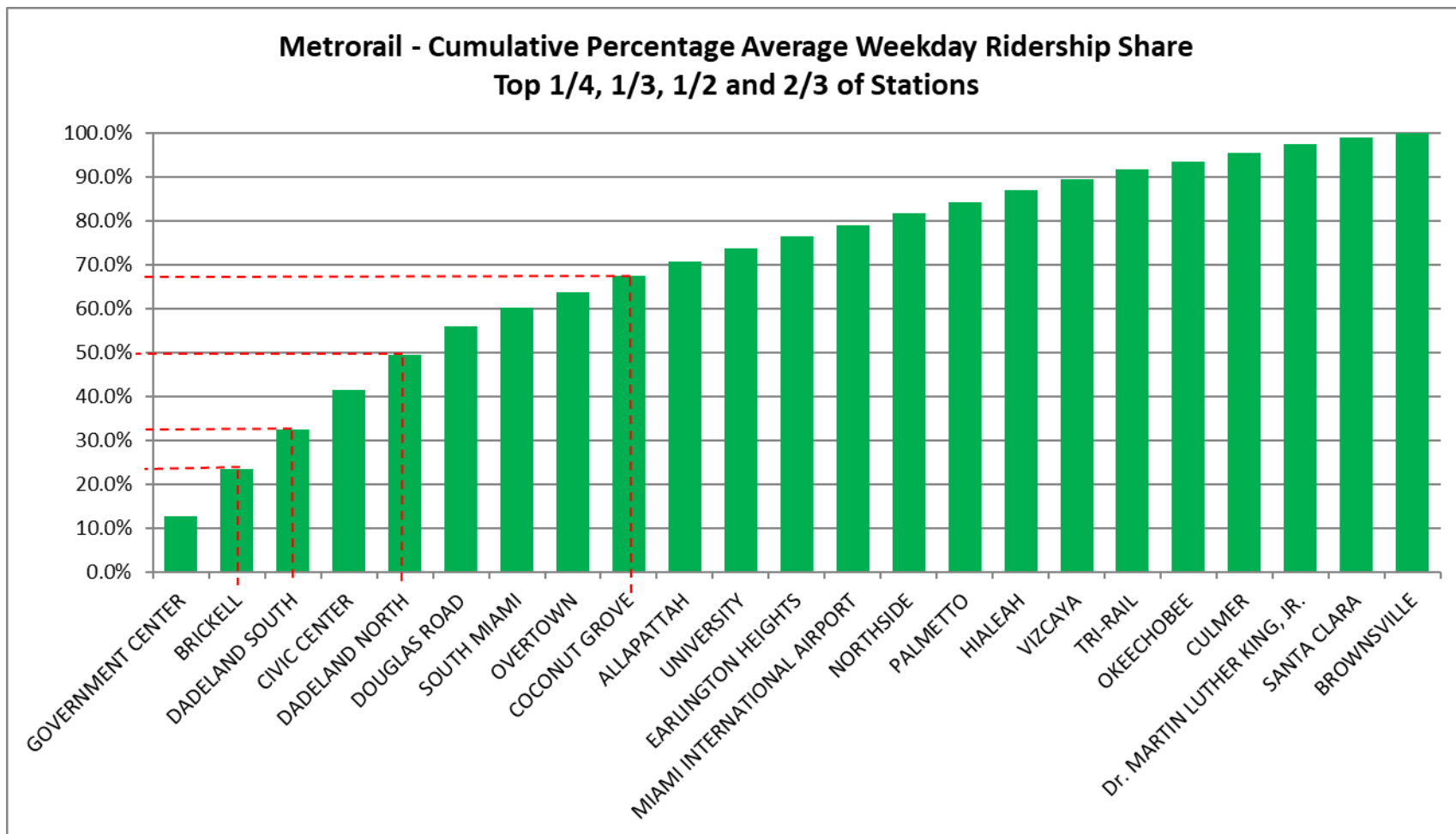
## METRORAIL AVERAGE SUNDAY BOARDINGS BY STATION

<b>Sundays</b>	<b>Average Sunday</b>	<b>Average Sunday</b>	<b>Percent Change</b>	<b>Average Sunday</b>	<b>Percent Change</b>	<b>Average Sunday</b>	<b>Percent Change</b>	<b>Average Sunday</b>	<b>Percent Change</b>
<b>STATIONS</b>	<b>May-24</b>	<b>May-23</b>	<b>YOY</b>	<b>Feb-20</b>	<b>Current vs Feb-20</b>	<b>Apr-24</b>	<b>MOM</b>	<b>May-19</b>	<b>YO5Y</b>
ALLAPATTAH	623	622	0.2%	791	-21.2%	639	-2.5%	721	-13.7%
BRICKELL	1,924	1,810	6.3%	2,379	-19.1%	1,993	-3.5%	2,038	-5.6%
BROWNSVILLE	239	268	-10.7%	406	-41.1%	238	0.3%	382	-37.4%
CIVIC CENTER	590	517	14.2%	791	-25.4%	556	6.1%	745	-20.8%
COCONUT GROVE	703	625	12.5%	838	-16.1%	704	-0.1%	609	15.4%
CULMER	335	366	-8.3%	616	-45.6%	362	-7.3%	506	-33.8%
DADELAND NORTH	971	966	0.5%	1,685	-42.4%	1,024	-5.1%	1,321	-26.4%
DADELAND SOUTH	1,461	1,422	2.8%	2,210	-33.9%	1,485	-1.6%	1,832	-20.2%
DOUGLAS ROAD	923	249	270.6%	1,090	-15.3%	975	-5.3%	923	0.0%
DR. MARTIN LUTHER KING, JR.	425	328	29.5%	506	-16.1%	316	34.6%	410	3.5%
EARLINGTON HEIGHTS	552	533	3.7%	799	-30.9%	578	-4.4%	661	-16.4%
GOVERNMENT CENTER	2,048	2,062	-0.7%	4,044	-49.4%	2,111	-3.0%	2,671	-23.3%
HIALEAH	413	386	7.0%	472	-12.4%	433	-4.6%	426	-2.9%
MIAMI INTERNATIONAL AIRPORT	1,007	982	2.5%	1,343	-25.0%	1,048	-3.9%	1,259	-20.0%
NORTHSIDE	565	578	-2.2%	653	-13.4%	568	-0.5%	618	-8.5%
OKEECHOBEE	304	220	38.6%	273	11.3%	301	1.1%	240	26.6%
OVERTOWN / ARENA	480	465	3.2%	544	-11.9%	552	-13.1%	454	5.6%
PALMETTO	212	238	-11.0%	336	-37.0%	225	-5.7%	235	-9.7%
SANTA CLARA	250	224	11.6%	280	-10.7%	265	-5.7%	268	-6.7%
SOUTH MIAMI	691	602	14.7%	987	-30.0%	704	-2.0%	798	-13.5%
TRI-RAIL	412	381	8.3%	528	-21.9%	420	-1.8%	401	2.9%
UNIVERSITY	337	342	-1.5%	608	-44.6%	503	-33.0%	285	18.2%
VIZCAYA	380	344	10.5%	524	-27.5%	405	-6.0%	423	-10.0%
<b>TOTAL</b>	<b>15,843</b>	<b>14,526</b>	<b>9.1%</b>	<b>22,701</b>	<b>-30.2%</b>	<b>16,400</b>	<b>-3.4%</b>	<b>18,222</b>	<b>-13.1%</b>

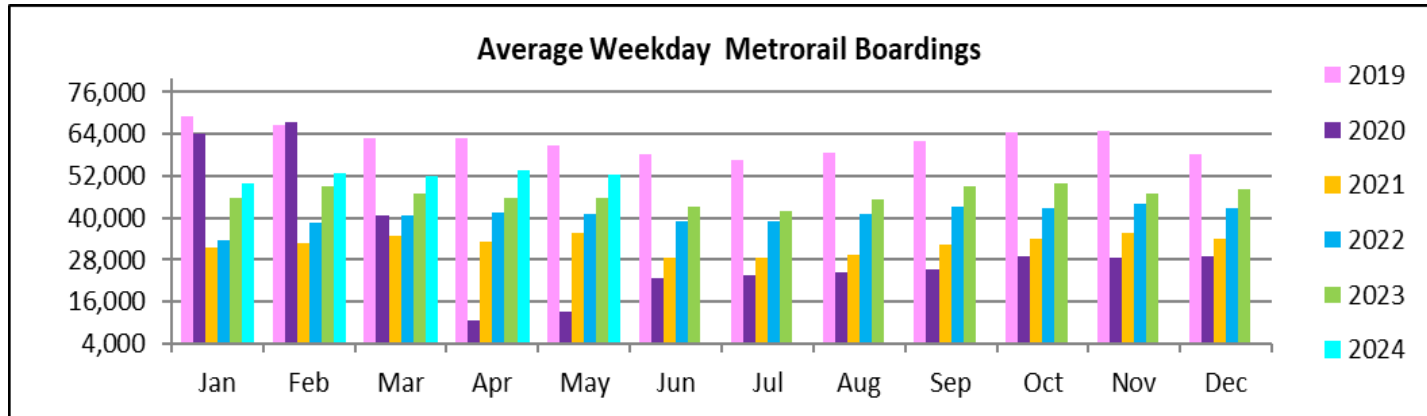
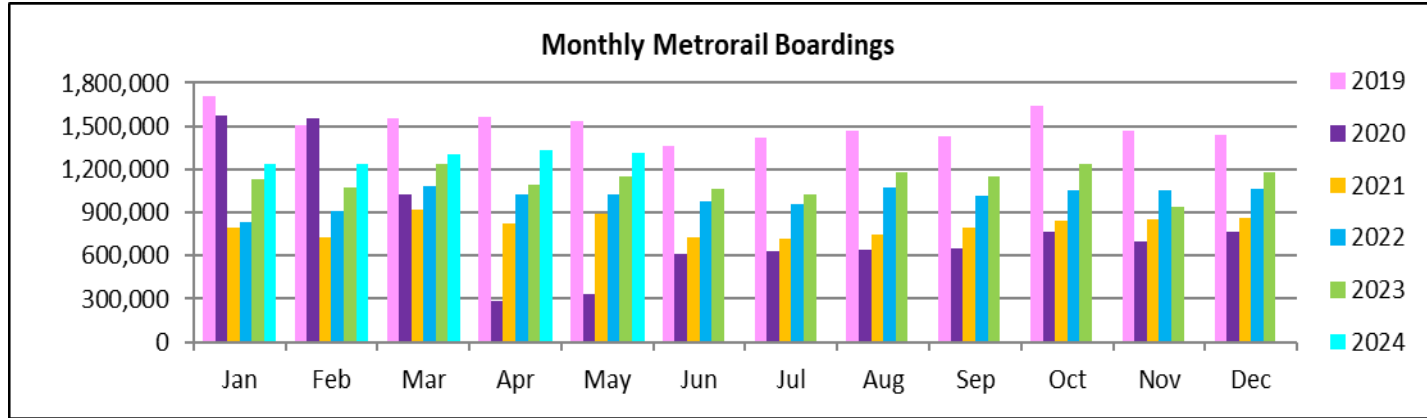
## METRORAIL TOTAL MONTHLY BOARDINGS BY STATION

Monthly Totals	Total Month	Total Month	Percent Change	Total Month	Percent Change	Total Month	Percent Change	Total Month	Percent Change
STATIONS	May-24	May-23	YOY	Feb-20	Current vs Feb-20	Apr-24	MOM	May-19	YO5Y
ALLAPATTAH	45,046	42,878	5.1%	46,868	-3.9%	44,856	0.4%	46,844	-3.8%
BRICKELL	141,702	130,881	8.3%	152,259	-6.9%	143,784	-1.4%	153,658	-7.8%
BROWNSVILLE	15,697	17,852	-12.1%	21,285	-26.3%	15,139	3.7%	22,010	-28.7%
CIVIC CENTER	107,050	93,348	14.7%	128,921	-17.0%	102,553	4.4%	130,214	-17.8%
COCONUT GROVE	48,227	38,885	24.0%	43,580	10.7%	47,641	1.2%	41,288	16.8%
CULMER	26,103	27,213	-4.1%	33,497	-22.1%	25,783	1.2%	31,160	-16.2%
DADELAND NORTH	104,204	98,873	5.4%	132,894	-21.6%	107,366	-2.9%	135,986	-23.4%
DADELAND SOUTH	119,569	114,816	4.1%	162,416	-26.4%	122,717	-2.6%	163,201	-26.7%
DOUGLAS ROAD	84,227	10,869	674.9%	82,141	2.5%	88,220	-4.5%	86,218	-2.3%
DR. MARTIN LUTHER KING, JR.	25,830	22,047	17.2%	27,980	-7.7%	20,762	24.4%	28,089	-8.0%
EARLINGTON HEIGHTS	37,337	34,125	9.4%	40,697	-8.3%	37,979	-1.7%	39,195	-4.7%
GOVERNMENT CENTER	167,231	164,258	1.8%	243,414	-31.3%	169,546	-1.4%	236,255	-29.2%
HIALEAH	33,766	24,848	35.9%	29,516	14.4%	33,050	2.2%	30,930	9.2%
MIAMI INTERNATIONAL AIRPORT	40,720	38,564	5.6%	46,115	-11.7%	40,182	1.3%	45,734	-11.0%
NORTHSIDE	36,611	34,856	5.0%	36,127	1.3%	35,374	3.5%	35,773	2.3%
OKEECHOBEE	25,958	22,287	16.5%	26,026	-0.3%	26,187	-0.9%	27,933	-7.1%
OVERTOWN / ARENA	45,880	42,988	6.7%	49,911	-8.1%	48,799	-6.0%	50,034	-8.3%
PALMETTO	31,996	31,812	0.6%	33,944	-5.7%	32,386	-1.2%	33,935	-5.7%
SANTA CLARA	20,780	17,619	17.9%	19,245	8.0%	20,861	-0.4%	18,736	10.9%
SOUTH MIAMI	55,779	48,113	15.9%	69,412	-19.6%	57,949	-3.7%	70,129	-20.5%
TRI-RAIL	29,930	28,845	3.8%	29,120	2.8%	30,245	-1.0%	27,950	7.1%
UNIVERSITY	37,365	35,792	4.4%	61,253	-39.0%	51,347	-27.2%	44,081	-15.2%
VIZCAYA	33,104	30,050	10.2%	32,497	1.9%	33,785	-2.0%	32,244	2.7%
<b>TOTAL</b>	<b>1,314,112</b>	<b>1,151,819</b>	<b>14.1%</b>	<b>1,549,118</b>	<b>-15.2%</b>	<b>1,336,511</b>	<b>-1.7%</b>	<b>1,531,597</b>	<b>-14.2%</b>

## METRORAIL CUMULATIVE PERCENTAGE RIDERSHIP SHARE



# **TOTAL MONTHLY AND AVERAGE WEEKDAY RIDERSHIP YEAR OVER YEAR COMPARISON CHARTS – METRORAIL**

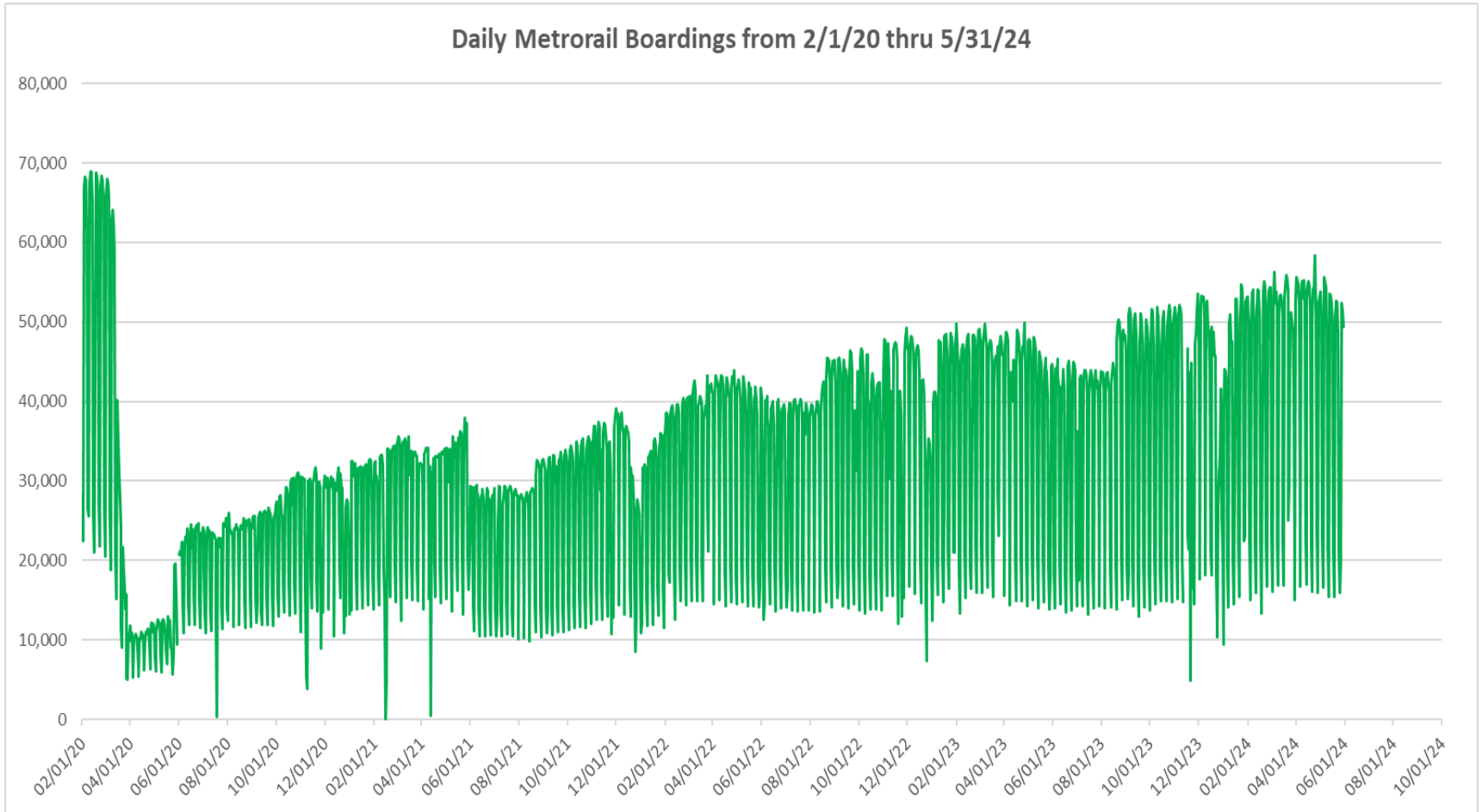


**“TOP 5 / BOTTOM 5” RAIL STATIONS AVERAGE WEEKDAY RIDERSHIP PERFORMANCE  
YEAR OVER YEAR COMPARISONS**

<b>Station</b>	<b>May-24</b>	<b>May-23</b>	<b>Absolute Delta (1)</b>	<b>Percent Delta</b>
DOUGLAS ROAD	3,353	740	2,614	353.4%
CIVIC CENTER	4,615	4,027	588	14.6%
BRICKELL	5,532	5,079	453	8.9%
COCONUT GROVE	1,856	1,470	386	26.3%
HIALEAH	1,326	965	361	37.5%
BROWNSVILLE	594	671	-77	-11.5%
CULMER	1,020	1,062	-42	-4.0%
PALMETTO	1,336	1,310	26	2.0%
TRI-RAIL	1,170	1,126	45	4.0%
MIAMI INTERNATIONAL AIRPORT	1,426	1,343	83	6.2%

(1) Averages rounded to the nearest boarding.

## DAILY METRORAIL RIDERSHIP SINCE FEBRUARY 1, 2020



- (1) There was no Metrobus, Metrorail and Metromover service on 5/31/20, as a safety precaution, and no service for any of the four modes on 9/28/22 as a result of Hurricane Ian..
- (2) The dip at the start of the second week of November 2020 is due to Hurricane Eta; these are *raw data* from the Unleash Live contractor AI video system.
- (3) The dip on 4/13/21 is due to a loss of connectivity at all stations, affecting a few stations over the next two days as well; a similar loss of connectivity is seen on 11/21/23.
- (4) The reduction seen beginning 6/1/21 is partly due to the resumption of fares and partly the result of resuming reporting Cubic faregate data rather than video camera counts.
- (5) As a result of free fares to launch the Better Bus Network, faregates are open beginning 11/13/23, and Unleash Live AI video system ridership counts are reported starting 11/17/23.
- (6) Periodic (weekly) variations are prominent, since weekday ridership is almost always significantly higher than weekend or holiday ridership; a few low-count days are due to system outages, often associated with construction or renovation work.



## METRORAIL PARKING PATRONAGE SUMMARY

### May 2024

PARK-RIDE LOT	ACTUAL CAPACITY (1)	ACTUAL OCCUPANCY (2)	PERCENT OCCUPANCY
DADELAND SOUTH	1,260	833	66%
DADELAND NORTH	1,702	1,183	69%
SOUTH MIAMI	816	355	44%
UNIVERSITY	260	217	83%
DOUGLAS ROAD	222		
COCONUT GROVE	100		
VIZCAYA	120	44	37%
CULMER	25	17	67%
SANTA CLARA	61	38	63%
ALLAPATTAH	74	7	9%
EARLINGTON HEIGHTS	361	158	44%
BROWNSVILLE	100	82	82%
DR. MARTIN LUTHER KING JR. (MDT)	62		
DR. MARTIN LUTHER KING JR. (GARAGE)	631		
NORTHSIDE	100	83	83%
HIALEAH	338	56	17%
OKEECHOBEE	1,398	149	11%
PALMETTO	700	156	22%
<b>TOTAL</b>	<b>8,330</b>	<b>3,377</b>	<b>41%</b>

- (1) Number of spaces could vary each week; shown are available spaces during final week of month, as submitted by DTPW Safety & Security office.
- (2) All sampled occupancy data provided by DTPW Safety & Security office; calculations are revisions to those submitted by that entity.
- (3) Daily averages rounded to nearest unit, with fewer counts at some stations than others, depending on staffing levels; calculations are based on sampled counted days only per raw data submitted, with resulting average daily occupancy shown.

# Metromover

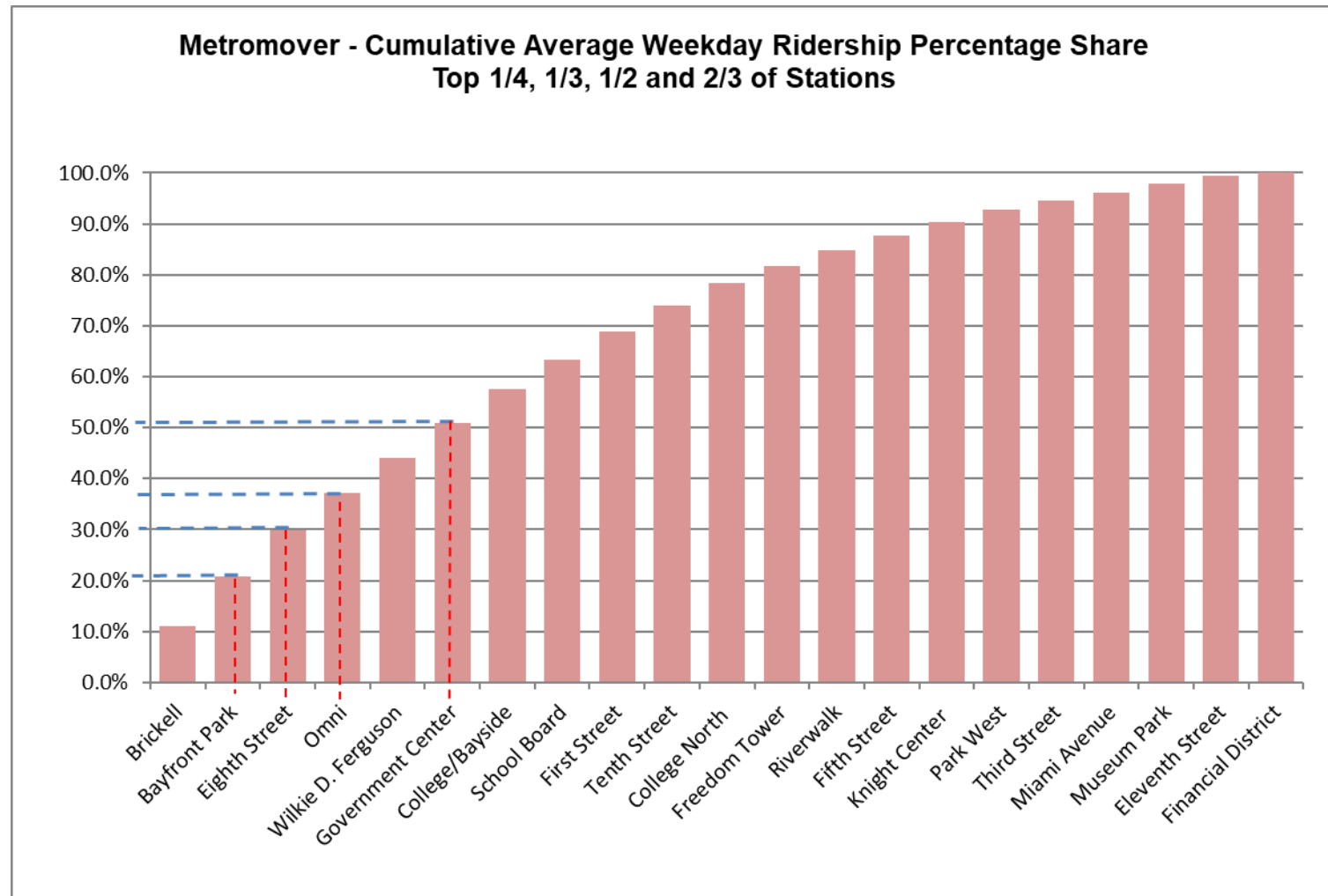


## METROMOVER MONTHLY AND AVERAGE DAILY BOARDINGS BY STATION

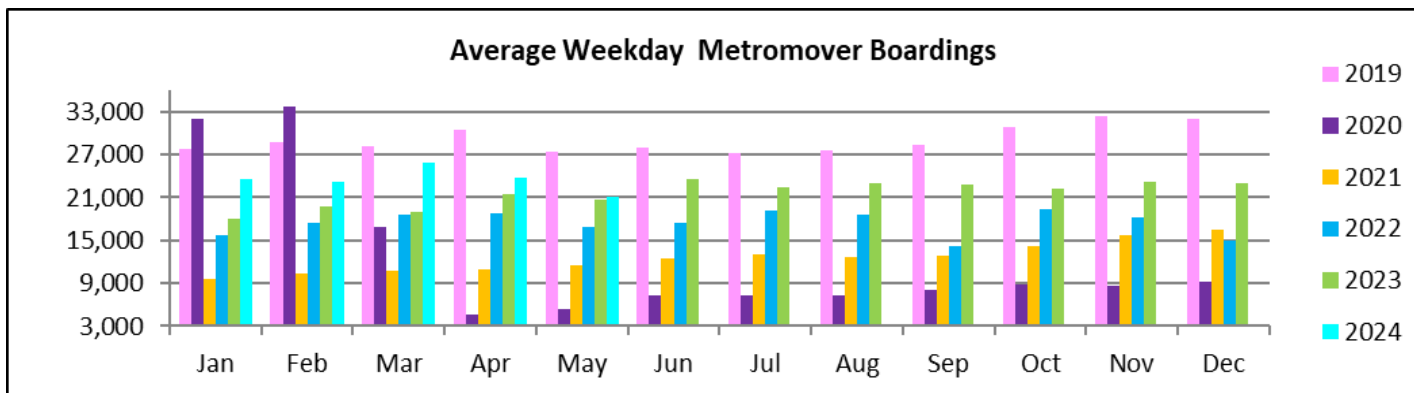
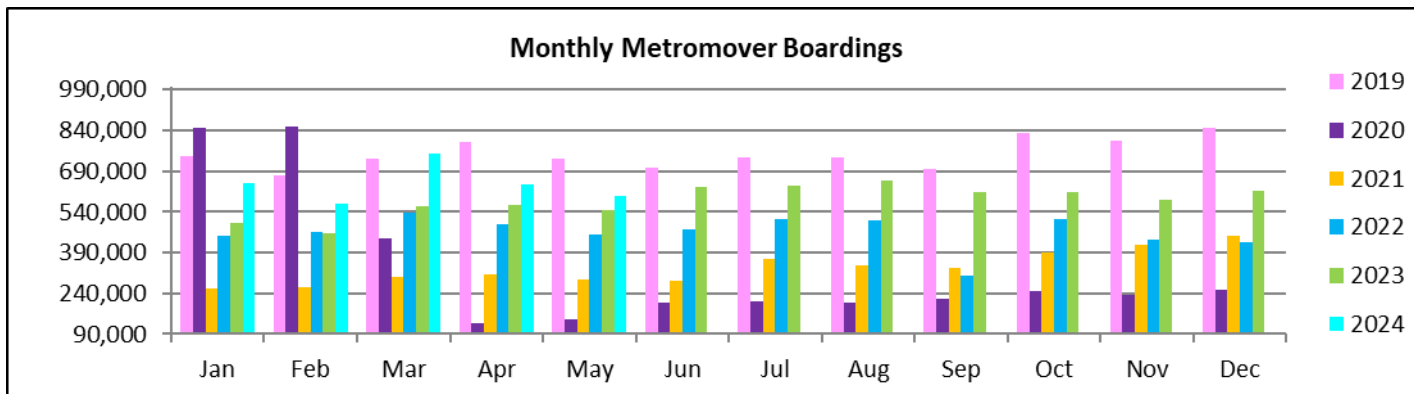
	Average Weekday	Average Weekday	Percent Change	Average Saturday	Average Saturday	Percent Change	Average Sunday	Average Sunday	Percent Change	Total Monthly	Total Monthly	Percent Change
STATIONS	May-24	May-23	24 vs 23	May-24	May-23	24 vs 23	May-24	May-23	24 vs 23	May-24	May-23	24 vs 23
School Board	1,246	1,252	-0.5%	780	761	2.4%	842	630	33.5%	34,790	34,392	1.2%
Omni	1,541	1,436	7.4%	989	793	24.7%	1,081	752	43.8%	43,418	38,999	11.3%
Museum Park	338	314	7.7%	325	469	-30.8%	344	418	-17.6%	10,524	10,977	-4.1%
Eleventh Street	334	277	20.6%	231	364	-36.5%	262	406	-35.4%	9,614	9,476	1.5%
Park West	531	794	-33.2%	406	703	-42.3%	430	718	-40.1%	15,351	24,322	-36.9%
Freedom Tower	727			631			711			20,562		
Government Center	1,455	2,368	-38.6%	1,193	2,132	-44.1%	974	1,639	-40.6%	41,751	26,880	55.3%
Miami Avenue	350	346	1.1%	293	234	25.3%	209	189	10.1%	10,082	7,484	34.7%
Third Street	375	239	56.4%	411	175	135.5%	380	187	102.9%	11,814	6,959	69.8%
Knight Center	562	468	20.1%	326	283	15.1%	223	252	-11.3%	14,671	12,746	15.1%
Bayfront Park	2,092	2,175	-3.8%	1,452	1,541	-5.8%	1,291	1,504	-14.2%	58,285	61,407	-5.1%
First Street	1,171			945			870			33,894		
College/Bayside	1,381	1,357	1.8%	1,277	1,222	4.5%	1,156	1,112	4.0%	41,107	40,674	1.1%
College North	902	1,006	-10.3%	551	601	-8.3%	441	547	-19.4%	24,114	27,518	-12.4%
Wilkie D. Ferguson	1,483	1,432	3.6%	953	989	-3.7%	727	842	-13.6%	40,209	39,628	1.5%
Riverwalk	646	793	-18.6%	398	490	-18.7%	421	434	-3.2%	18,041	21,694	-16.8%
Fifth Street	588	542	8.6%	408	358	13.9%	439	335	31.0%	16,783	15,137	10.9%
Eighth Street	1,892	1,935	-2.2%	1,588	1,709	-7.1%	1,502	1,520	-1.2%	55,772	57,163	-2.4%
Tenth Street	1,085	1,017	6.7%	687	716	-4.1%	651	692	-5.9%	29,864	28,895	3.4%
Brickell	2,315	2,096	10.4%	1,356	1,322	2.6%	1,353	1,354	-0.1%	63,253	58,411	8.3%
Financial District	133	944	-86.0%	38	491	-92.3%	50	484	-89.6%	3,333	25,186	-86.8%
<b>TOTAL</b>	<b>21,148</b>	<b>20,792</b>	<b>1.7%</b>	<b>15,234</b>	<b>15,351</b>	<b>-0.8%</b>	<b>14,355</b>	<b>14,014</b>	<b>2.4%</b>	<b>597,232</b>	<b>547,948</b>	<b>9.0%</b>

(\*) Some Metromover stations were closed for construction during the 2023-2024 period, due to installation of new equipment and construction work.

## METROMOVER CUMULATIVE PERCENTAGE RIDERSHIP SHARE



# TOTAL MONTHLY AND AVERAGE WEEKDAY RIDERSHIP YEAR OVER YEAR COMPARISON CHARTS – METROMOVER

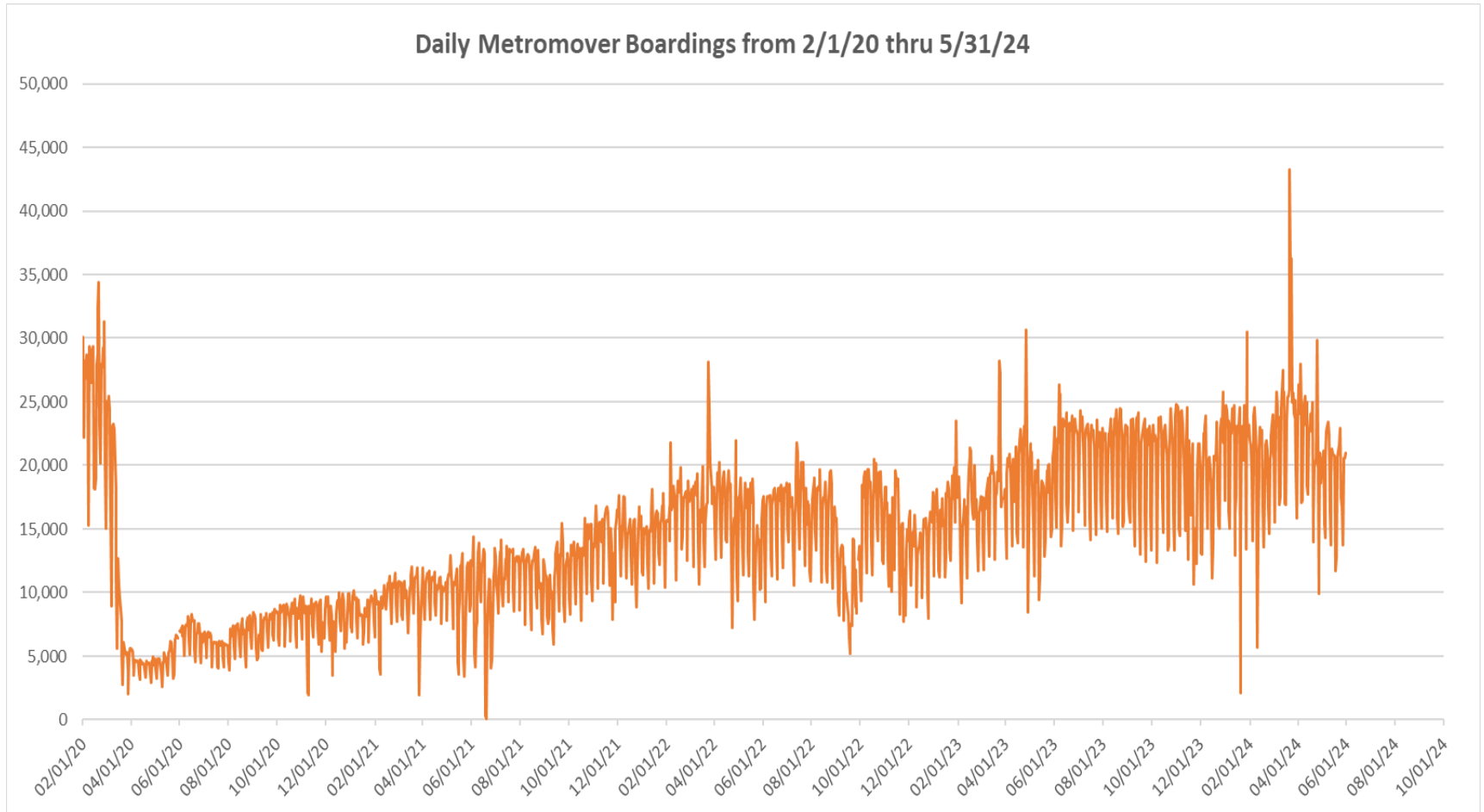


**“TOP 5 / BOTTOM 5” MOVER STATIONS AVERAGE WEEKDAY RIDERSHIP PERFORMANCE  
YEAR OVER YEAR COMPARISONS**

<b>Station</b>	<b>May-24</b>	<b>May-23</b>	<b>Absolute Delta (1)</b>	<b>Percent Delta</b>
Brickell	2,315	2,096	219	10.4%
Third Street	375	239	135	56.4%
Omni	1,541	1,436	106	7.4%
Knight Center	562	468	94	20.1%
Tenth Street	1,085	1,017	68	6.7%
Government Center	1,455	2,368	-914	-38.6%
Financial District	133	944	-811	-86.0%
Park West	531	794	-264	-33.2%
Riverwalk	646	793	-148	-18.6%
College North	902	1,006	-104	-10.3%

(1) Averages rounded to the nearest boarding.

## DAILY METROMOVER RIDERSHIP SINCE FEBRUARY 1, 2020



- (1) There was no Metrobus, Metrorail and Metromover service on 5/31/20, as a safety precaution, and no service for any of the four modes on 9/28/22 as a result of Hurricane Ian.
- (2) The dip at the start of the second week of November 2020 is due to Hurricane Eta; these are *raw data* from the UTA contractor APC system. Other more recent dips are due to various station closures (mostly on weekends) for system maintenance purposes.
- (3) Periodic (weekly) variations are prominent, since weekday ridership is almost always significantly higher than weekend or holiday ridership; a few low-count days are due to system outages, often associated with construction or renovation work.

## Special Transportation Services



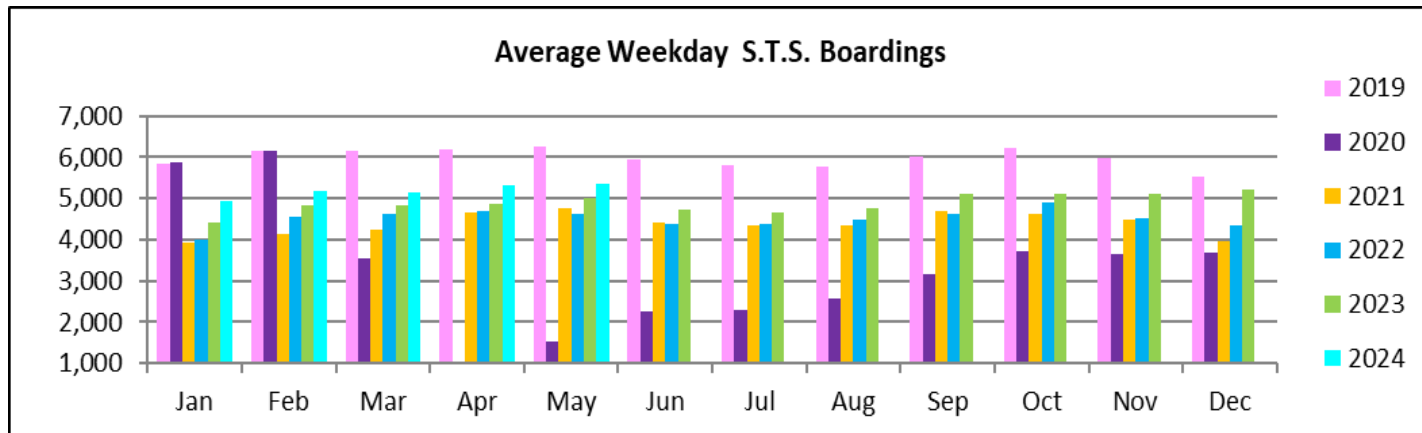
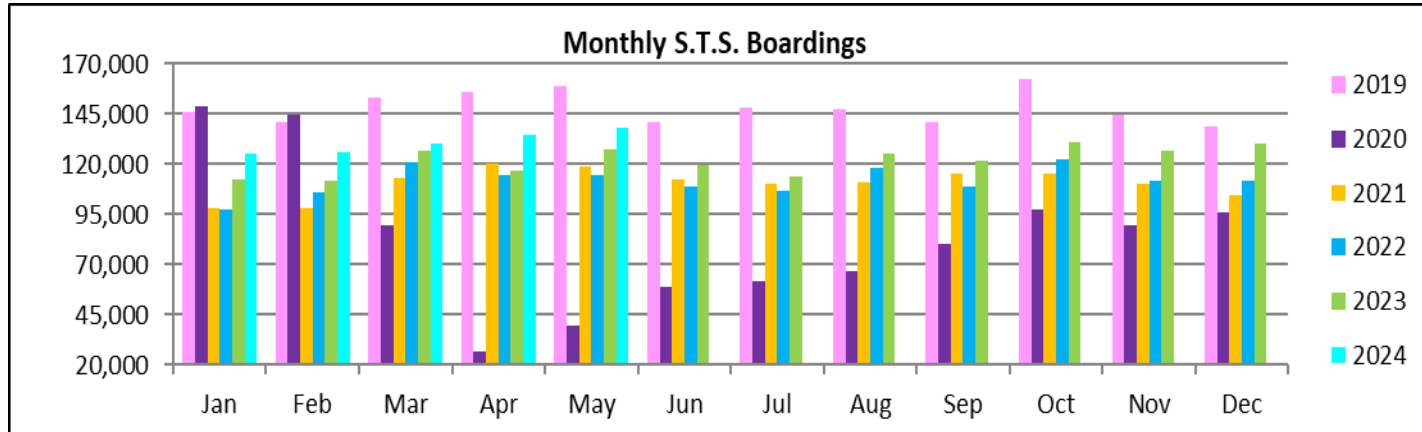


# **STS MONTHLY AND AVERAGE DAILY BOARDINGS** **May 2024**

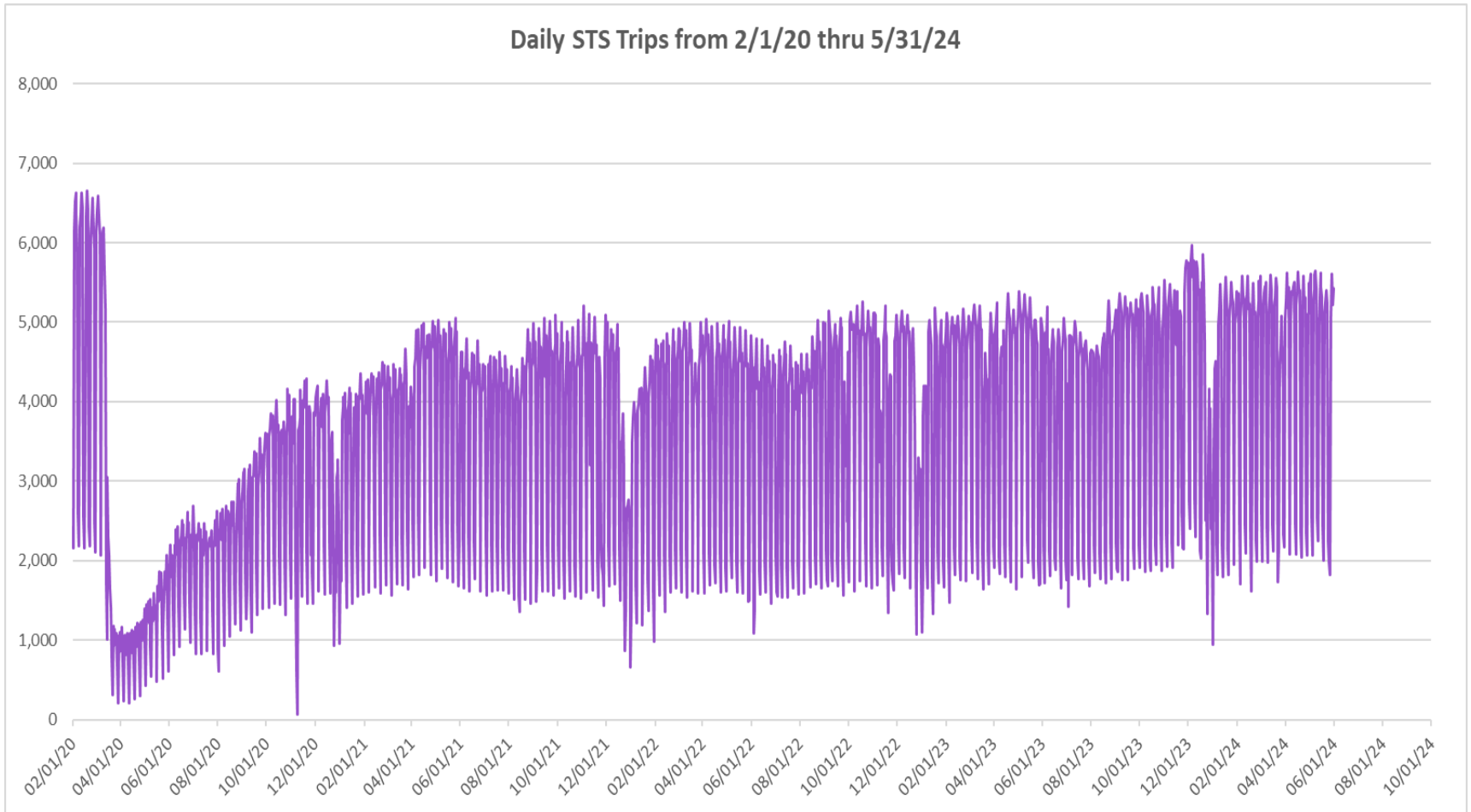
Measure	Timeline	Ambulatory	Wheelchair	Total Clients (*)
<b>Average Weekday</b>	May-24	4,500	869	<b>5,369</b>
<b>Average Saturday</b>	May-24	2,017	413	<b>2,430</b>
<b>Average Sunday</b>	May-24	1,662	362	<b>2,024</b>
<b>Total Monthly</b>	<b>May-24</b>	<b>115,381</b>	<b>22,577</b>	<b>137,958</b>
<b>Average Weekday</b>	May-23	4,183	831	<b>5,015</b>
<b>Average Saturday</b>	May-23	1,732	396	<b>2,127</b>
<b>Average Sunday</b>	May-23	1,438	352	<b>1,791</b>
<b>Total Monthly</b>	<b>May-23</b>	<b>106,154</b>	<b>21,628</b>	<b>127,782</b>
<b>Average Weekday</b>	May-22	3,833	790	<b>4,624</b>
<b>Average Saturday</b>	May-22	1,603	355	<b>1,958</b>
<b>Average Sunday</b>	May-22	1,282	313	<b>1,595</b>
<b>Total Monthly</b>	<b>May-22</b>	<b>94,609</b>	<b>19,896</b>	<b>114,505</b>
<b>% Change Current vs. May 2023 Weekday</b>		7.6%	4.5%	7.1%
<b>% Change Current vs. May 2023 Saturday</b>		16.5%	4.4%	14.2%
<b>% Change Current vs. May 2023 Sunday</b>		15.6%	2.7%	13.0%
<b>% Change Current vs. May 2023 Month Total</b>		<b>8.7%</b>	<b>4.4%</b>	<b>8.0%</b>
<b>% Change Current vs. May 2022 Weekday</b>		17.4%	9.9%	16.1%
<b>% Change Current vs. May 2022 Saturday</b>		25.8%	16.4%	24.1%
<b>% Change Current vs. May 2022 Sunday</b>		29.7%	15.6%	26.9%
<b>% Change Current vs. May 2022 Month Total</b>		<b>22.0%</b>	<b>13.5%</b>	<b>20.5%</b>

(\*) Trip count data provided by STS contractor.

# **TOTAL MONTHLY AND AVERAGE WEEKDAY RIDERSHIP YEAR OVER YEAR COMPARISON CHARTS – SPECIAL TRANSPORTATION SERVICES (S.T.S.)**

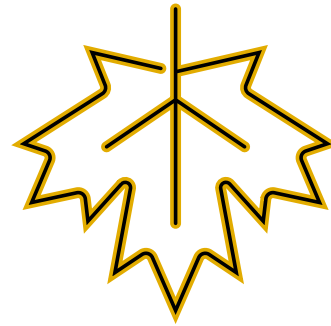
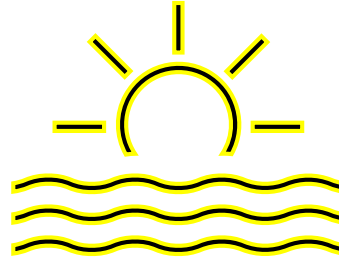
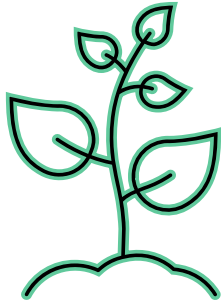


## DAILY STS RIDERSHIP SINCE FEBRUARY 1, 2020

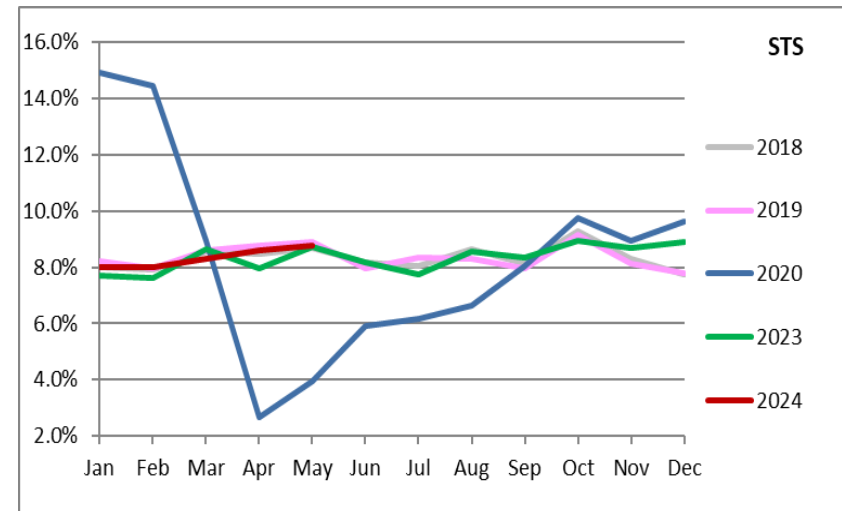
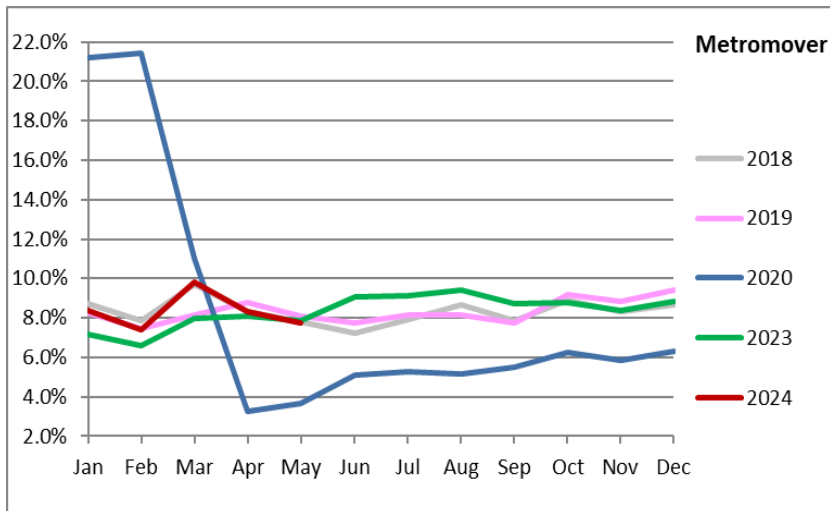
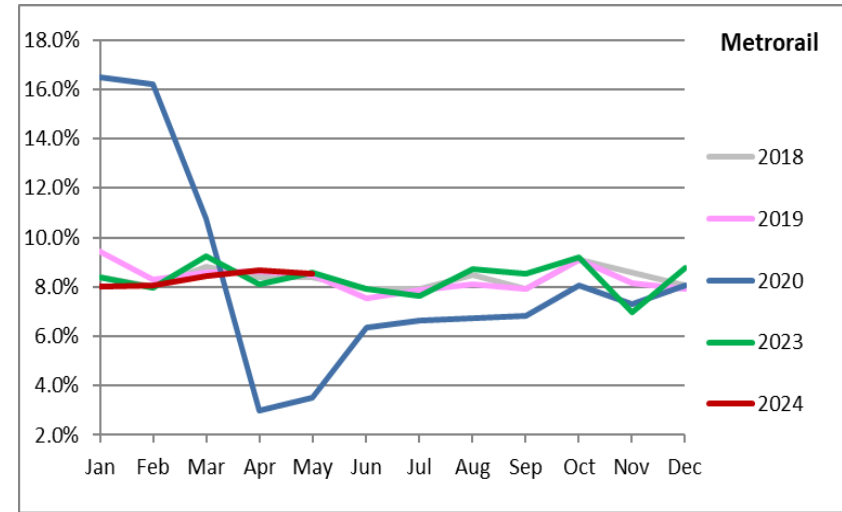
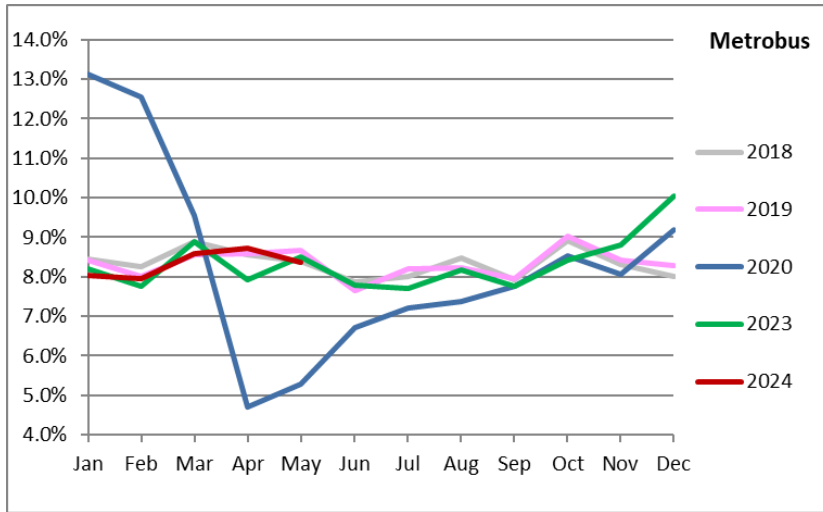


- (1) There was no service (for any of the four modes) on 9/28/22 as a result of Hurricane Ian.
- (2) The dip at the start of the second week of December 2020 is due to Hurricane Eta.
- (3) Periodic (weekly) variations are prominent, since weekday ridership is almost always significantly higher than weekend or holiday ridership.

## Ridership Seasonality



# RIDERSHIP SEASONALITY – PERCENT RIDERSHIP SHARE BY MONTH AND CALENDAR YEAR FOR EACH MODE



Note: the prominent dips seen in the fall of 2017 and beginning in the spring of 2020 are due to Hurricane Irma and the SARS-CoV-2 pandemic, respectively. The pronounced rise beginning November 2023 for Metrobus and Metrorail can be attributed to the launch of the Better Bus Network and the attendant free fares, which ended on New Year's Day 2024.