



TRANSPORTATION AND PUBLIC WORKS

RIDERSHIP TECHNICAL REPORT

Division of Performance Analysis



March 2025

Table of Contents

<i>Table of Contents</i>	2-3
All Modes Overview	4
Total Monthly Weekday, Saturday and Sunday Monthly Boardings By Mode	5
Average Weekday, Saturday and Sunday Boardings by Mode	6
Metrobus Total Monthly Ridership Comparisons by Fiscal Year	7
Metrorail Total Monthly Ridership Comparisons by Fiscal Year	8
Metromover Total Monthly Ridership Comparisons by Fiscal Year	9
STS Total Monthly Ridership Comparisons by Fiscal Year	10
All-Modes Combined Total Monthly Ridership Comparisons By Fiscal Year	11
All Modes Combined Total Monthly and Average Weekday Ridership – Year over Year Comparison Charts	12
Average Weekday Ridership – Modal Splits	13
Daily Ridership for All Modes Combined since 2/1/20	14
Metrobus	15
Better Bus Network (BBN, 11/13/2023 Lineup) Bus Route Changes, Pt 1 and Pt 2	16-17
Metrobus Average Weekday Boardings by Route	18-20
Metrobus Average Saturday Boardings by Route	21-22
Metrobus Average Sunday Boardings by Route	23-24
Metrobus Monthly Total Boardings by Route	25-27
Bus Ridership by Route Service Type Lineups Comparison (month-over-month & month-over-17 months)	28-31
Bus Routes as Ranked by Percentage of Average Weekday Ridership	32
Metrobus Cumulative Percentage Average Weekday Ridership Share by Route (Top 75%)	33
Metrobus Estimated Weekday Ridership since 02/01/20 (two-week moving averages)	34
Total Monthly and Average Weekday Bus Ridership – Year over Year Comparison Charts	35
Bus “Top 10 / Bottom 10” Bus Routes Average Weekday Ridership Performance – Year-over-Year Comparisons	36
Bus “Top 10 / Bottom 10” Bus Routes Sets Average Weekday Ridership Performance – Year-over-Year Comparisons	37
Bus “Top 10 / Bottom 10” Bus Routes Sets Average Weekday Ridership Performance – Month-over-17 Month Comparisons	38
Daily Metrobus Ridership since 2/1/20	39
Metrobus Parking Patronage Summary	40

Table of Contents (continued)

Metrorail	41
Metrorail Average Weekday Boardings by Station	42
Metrorail Average Saturday Boardings by Station	43
Metrorail Average Sunday Boardings by Station	44
Metrorail Total Monthly Boardings by Station	45
Metrorail Cumulative Percentage Average Weekday Ridership Share	46
Metrorail Weekday Ridership since 02/01/20 (two-week moving averages)	47
Total Monthly and Average Weekday Rail Ridership – Year over Year Comparison Charts	48
“Top 5 / Bottom 5” Stations Average Weekday Ridership Performance	49
Daily Metrorail Ridership since 2/1/20	50
Metrorail Parking Patronage Summary	51
Metromover	52
Monthly and Average Daily Mover Boardings by Station	53
Metromover Cumulative Percentage Average Weekday Ridership Share	54
Total Monthly and Average Weekday Mover Ridership – Year over Year Comparison Charts	55
“Top 5 / Bottom 5” Stations Average Weekday Ridership Performance	56
Daily Metromover Ridership since 2/1/20	57
Special Transportation Services (STS)	58
STS Monthly and Average Daily Boardings	59
Total Monthly and Average Weekday STS Ridership – Year over Year Comparison Charts	60
Daily STS Ridership since 2/1/20	61
Ridership Seasonality	62
Ridership Seasonality – Average Weekend Ridership by Month and Fiscal Year for Metrobus	63
Ridership Seasonality – Average Weekend Ridership by Month and Fiscal Year for Metrorail	64
Ridership Seasonality – Percent Share of Total Ridership by Month and Calendar Year for Each Mode	65
Ridership Volatility – Month-to-Month Average Weekday Ridership Percentage Changes for Metrobus and Metrorail	66

All Modes Overview



TOTAL MONTHLY WEEKDAY, SATURDAY AND SUNDAY BOARDINGS BY MODE
March 2025

TRAVEL MODE	MONTH'S TOTAL WEEKDAYS RIDERSHIP	MONTH'S TOTAL SATURDAYS RIDERSHIP	MONTH'S TOTAL SUNDAYS RIDERSHIP	TOTAL MONTHLY RIDERSHIP	% CHANGE vs Mar-24 TOTAL MONTH RIDERSHIP
METROBUS (1)	3,857,954	607,353	442,229	4,907,536	-10.1%
METRORAIL (2)	1,123,247	119,198	91,654	1,334,099	2.4%
METROMOVER	454,398	86,144	85,876	626,418	-16.8%
STS PARATRANSIT (3)	116,514	12,533	10,435	139,482	7.1%
TOTAL	5,552,113	825,228	630,194	7,007,535	-8.4%

- (1) Metrobus ridership reporting through automatic passenger counters coupled with a new enhanced sensor system resumed on October 1, 2022.
- (2) Metrorail fares resumed on June 1, 2021, following a 14-month period of fare-free rides as a result of the SARS-CoV-2 pandemic. The NextFare System faregate data replaced the video data as Rail ridership data of record starting on that date, until free fares were reinstated for the Better Bus Network launch on 11/13/23. The NextFare System Rail faregate data collection and reporting resumed on New Year's Day 2024.
- (3) Paratransit (STS) ridership data as reported by the contractor and subsequently audited by the Department.

AVERAGE WEEKDAY, SATURDAY AND SUNDAY BOARDINGS BY MODE
March 2025

Travel Mode	Average Weekday	Average Saturday	Average Sunday	% Change vs. Mar-24 Weekday	% Change vs. Mar-24 Saturday	% Change vs. Mar-24 Sunday
METROBUS	183,802	121,477	88,446	-10.7%	-7.7%	-7.9%
METRORAIL	53,488	23,840	18,331	2.6%	3.9%	-2.4%
METROMOVER	22,548	17,959	17,799	-13.0%	-19.0%	-13.6%
STS PARATRANSIT	5,548	2,507	2,087	7.6%	9.0%	0.3%
Totals	265,385	165,782	126,663	-8.2%	-7.4%	-7.9%

(*) Average ridership is calculated and published only for those days and stations or routes with nontrivial amounts of reported data.

METROBUS TOTAL MONTHLY RIDERSHIP COMPARISONS BY FISCAL YEAR

Bus Month	FY 19	FY 20	FY 21	FY 22	FY 23	FY 24	FY 25	Variance 19 to 20 (*)	Variance 20 to 21 (*)	Variance 21 to 22	Variance 22 to 23 (**)	Variance 23 to 24	Variance 24 to 25	Variance 19 TO 25
Oct	4,554,886	4,507,012	2,805,139	3,081,157	4,679,725	4,912,151	5,043,329	-1.1%	-37.8%	9.8%	51.9%	5.0%	2.7%	10.7%
Nov	4,245,535	4,197,225	2,651,290	3,056,726	4,549,666	5,135,172	4,835,529	-1.1%	-36.8%	15.3%	48.8%	12.9%	-5.8%	13.9%
Dec	4,081,581	4,126,990	3,022,530	3,123,883	4,677,460	5,857,057	4,773,057	1.1%	-26.8%	3.4%	49.7%	25.2%	-18.5%	16.9%
Jan	4,195,911	4,316,998	3,082,746	3,029,055	4,785,128	5,103,257	4,973,281	2.9%	-28.6%	-1.7%	58.0%	6.6%	-2.5%	18.5%
Feb	3,994,019	4,123,083	3,076,966	2,995,789	4,526,317	5,053,665	4,715,948	3.2%	-25.4%	-2.6%	51.1%	11.7%	-6.7%	18.1%
Mar	4,266,768	3,136,162	3,660,639	3,218,562	5,183,872	5,461,317	4,907,536	-26.5%	16.7%	-12.1%	61.1%	5.4%	-10.1%	15.0%
Apr	4,291,135	1,544,316	3,625,048	3,105,797	4,618,302	5,548,614		-64.0%	134.7%	-14.3%	48.7%	20.1%		
May	4,330,922	1,734,609	3,683,343	3,097,574	4,953,197	5,308,711		-59.9%	112.3%	-15.9%	59.9%	7.2%		
Jun	3,823,863	2,210,725	2,672,570	3,064,059	4,545,050	4,805,039		-42.2%	20.9%	14.6%	48.3%	5.7%		
Jul	4,094,906	2,366,749	2,769,907	3,189,994	4,484,458	5,230,894		-42.2%	17.0%	15.2%	40.6%	16.6%		
Aug	4,109,613	2,422,014	2,843,552	3,442,006	4,756,063	5,051,346		-41.1%	17.4%	21.0%	38.2%	6.2%		
Sep	3,971,220	2,546,923	2,877,110	3,123,572	4,525,426	4,860,066		-35.9%	13.0%	8.6%	44.9%	7.4%		
FY Total	49,960,359	37,232,806	36,770,840	37,528,174	56,284,664	62,327,289		-25.5%	-1.2%	2.1%	50.0%	10.7%		

(*) The severe losses in ridership beginning in March 2020 are due to the SARS-CoV-2 pandemic, followed by an overall gradual recovery beginning in March 2021.

(**) The consistently very high increases seen at the start of FY 23 are largely due to the 10/01/2022 switchover from fareboxes to Automatic Passenger Counters in estimating ridership on the directly operated (non-contracted) bus routes.

METRORAIL TOTAL MONTHLY RIDERSHIP COMPARISONS BY FISCAL YEAR

Rail Month	FY 19	FY 20	FY 21	FY 22	FY 23	FY 24	FY 25	Variance 19 to 20 (*)	Variance 20 to 21 (*)	Variance 21 to 22	Variance 22 to 23	Variance 23 to 24	Variance 24 to 25	Variance 19 TO 25
Oct	1,757,225	1,643,166	769,525	844,383	1,053,191	1,237,096	1,321,113	-6.5%	-53.2%	9.7%	24.7%	17.5%	6.8%	-24.8%
Nov	1,656,929	1,469,448	699,492	850,881	1,055,066	935,121	1,220,720	-11.3%	-52.4%	21.6%	24.0%	-11.4%	30.5%	-26.3%
Dec	1,553,804	1,433,928	769,194	860,436	1,063,096	1,177,272	1,202,284	-7.7%	-46.4%	11.9%	23.6%	10.7%	2.1%	-22.6%
Jan	1,708,695	1,576,340	799,119	832,924	1,127,340	1,233,350	1,273,616	-7.7%	-49.3%	4.2%	35.3%	9.4%	3.3%	-25.5%
Feb	1,501,458	1,549,118	730,792	905,162	1,072,791	1,240,316	1,227,182	3.2%	-52.8%	23.9%	18.5%	15.6%	-1.1%	-18.3%
Mar	1,554,851	1,027,319	917,097	1,084,978	1,239,336	1,302,854	1,334,099	-33.9%	-10.7%	18.3%	14.2%	5.1%	2.4%	-14.2%
Apr	1,559,446	287,803	827,414	1,027,139	1,087,816	1,336,511		-81.5%	187.5%	24.1%	5.9%	22.9%		
May	1,531,597	337,696	887,111	1,023,322	1,151,819	1,314,112		-78.0%	162.7%	15.4%	12.6%	14.1%		
Jun	1,359,966	608,758	723,469	975,477	1,066,861	1,092,060		-55.2%	18.8%	34.8%	9.4%	2.4%		
Jul	1,419,158	632,964	722,159	953,331	1,022,937	1,159,375		-55.4%	14.1%	32.0%	7.3%	13.3%		
Aug	1,463,646	641,275	749,578	1,076,490	1,174,138	1,247,019		-56.2%	16.9%	43.6%	9.1%	6.2%		
Sep	1,427,726	654,244	795,749	1,012,331	1,146,864	1,240,457		-54.2%	21.6%	27.2%	13.3%	8.2%		
FY Total	18,494,501	11,862,059	9,390,699	11,446,854	13,261,255	14,515,543		-35.9%	-20.8%	21.9%	15.9%	9.5%		

(*) The severe losses in ridership beginning in March 2020 are due to the SARS-CoV-2 pandemic, followed by an overall gradual recovery beginning in April 2021.

METROMOVER TOTAL MONTHLY RIDERSHIP COMPARISONS BY FISCAL YEAR

Mover								Variance	Variance	Variance	Variance	Variance	Variance	Variance
Month	FY 19	FY 20	FY 21	FY 22	FY 23	FY 24	FY 25	19 to 20 (*)	20 to 21 (*)	21 to 22	22 to 23	23 to 24	24 to 25	19 TO 25
Oct	790,533	831,234	250,044	389,065	514,308	614,479	550,054	5.1%	-69.9%	55.6%	32.2%	19.5%	-10.5%	-30.4%
Nov	735,198	799,632	232,422	418,929	439,150	584,887	561,326	8.8%	-70.9%	80.2%	4.8%	33.2%	-4.0%	-23.6%
Dec	767,239	849,832	251,019	450,320	426,073	616,455	634,296	10.8%	-70.5%	79.4%	-5.4%	44.7%	2.9%	-17.3%
Jan	746,728	847,773	255,968	451,566	498,566	644,639	571,831	13.5%	-69.8%	76.4%	10.4%	29.3%	-11.3%	-23.4%
Feb	675,160	855,398	260,332	465,968	459,264	570,242	526,198	26.7%	-69.6%	79.0%	-1.4%	24.2%	-7.7%	-22.1%
Mar	737,814	441,200	302,502	535,857	558,396	753,107	626,418	-40.2%	-31.4%	77.1%	4.2%	34.9%	-16.8%	-15.1%
Apr	795,696	130,549	310,772	495,982	565,943	640,281		-83.6%	138.1%	59.6%	14.1%	13.1%		
May	734,645	146,454	292,922	455,120	547,948	597,232		-80.1%	100.0%	55.4%	20.4%	9.0%		
Jun	701,318	203,637	286,145	477,286	632,423	559,913		-71.0%	40.5%	66.8%	32.5%	-11.5%		
Jul	739,814	210,596	368,847	512,094	635,954	610,437		-71.5%	75.1%	38.8%	24.2%	-4.0%		
Aug	739,785	205,995	344,319	508,359	657,267	597,361		-72.2%	67.1%	47.6%	29.3%	-9.1%		
Sep	699,879	219,696	331,915	305,185	610,810	527,660		-68.6%	51.1%	-8.1%	100.1%	-13.6%		
FY Total	8,863,809	5,741,996	3,487,207	5,465,731	6,546,102	7,316,693		-35.2%	-39.3%	56.7%	19.8%	11.8%		

(*) The severe losses in ridership beginning in March 2020 are due to the SARS-CoV-2 pandemic, followed by an overall gradual recovery beginning in April 2021.

SPECIAL TRANSPORTATION SERVICES (STS) TOTAL MONTHLY RIDERSHIP COMPARISONS BY FISCAL YEAR

STS Month	FY 19	FY 20	FY 21	FY 22	FY 23	FY 24	FY 25	Variance 19 to 20 (*)	Variance 20 to 21 (*)	Variance 21 to 22	Variance 22 to 23	Variance 23 to 24	Variance 24 to 25	Variance 19 to 25
Oct	162,564	162,704	97,388	115,122	122,189	130,958	134,852	0.1%	-40.1%	18.2%	6.1%	7.2%	3.0%	-17.0%
Nov	145,653	144,366	89,387	110,289	111,578	127,025	127,979	-0.9%	-38.1%	23.4%	1.2%	13.8%	0.8%	-12.1%
Dec	136,110	138,642	96,366	104,496	112,019	130,093	125,724	1.9%	-30.5%	8.4%	7.2%	16.1%	-3.4%	-7.6%
Jan	146,268	149,114	97,928	97,541	112,632	125,513	130,857	1.9%	-34.3%	-0.4%	15.5%	11.4%	4.3%	-10.5%
Feb	141,396	144,392	98,285	105,706	111,748	125,732	128,725	2.1%	-31.9%	7.6%	5.7%	12.5%	2.4%	-9.0%
Mar	153,191	89,634	112,930	120,718	126,819	130,203	139,482	-41.5%	26.0%	6.9%	5.1%	2.7%	7.1%	-8.9%
Apr	155,808	26,877	120,122	114,912	116,882	134,677		-82.7%	346.9%	-4.3%	1.7%	15.2%		
May	158,665	39,654	118,636	114,505	127,782	137,958		-75.0%	199.2%	-3.5%	11.6%	8.0%		
Jun	141,320	59,093	112,397	109,054	119,527	118,860		-58.2%	90.2%	-3.0%	9.6%	-0.6%		
Jul	148,232	61,765	110,059	107,188	113,623	126,391		-58.3%	78.2%	-2.6%	6.0%	11.2%		
Aug	147,331	66,563	110,766	117,941	125,510	132,503		-54.8%	66.4%	6.5%	6.4%	5.6%		
Sep	141,387	80,346	115,406	108,788	122,065	130,244		-43.2%	43.6%	-5.7%	12.2%	6.7%		
FY Total	1,777,925	1,163,150	1,279,670	1,326,260	1,422,374	1,550,157		-34.6%	10.0%	3.6%	7.2%	9.0%		

(*) The severe losses in ridership beginning in March 2020 are due to the SARS-CoV-2 pandemic, followed by an overall gradual recovery beginning in April 2021.

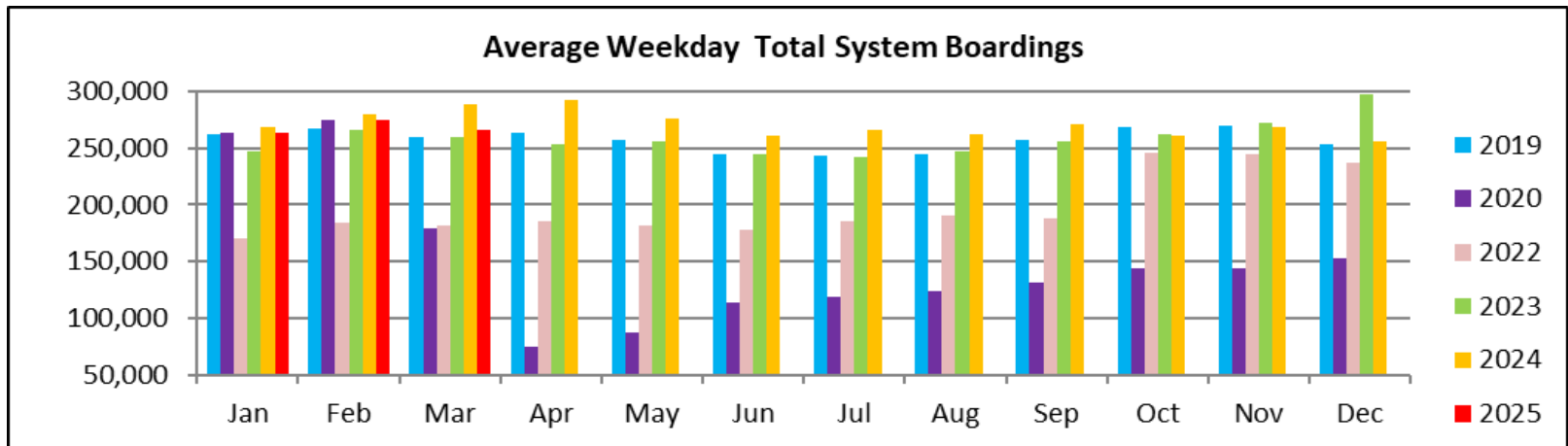
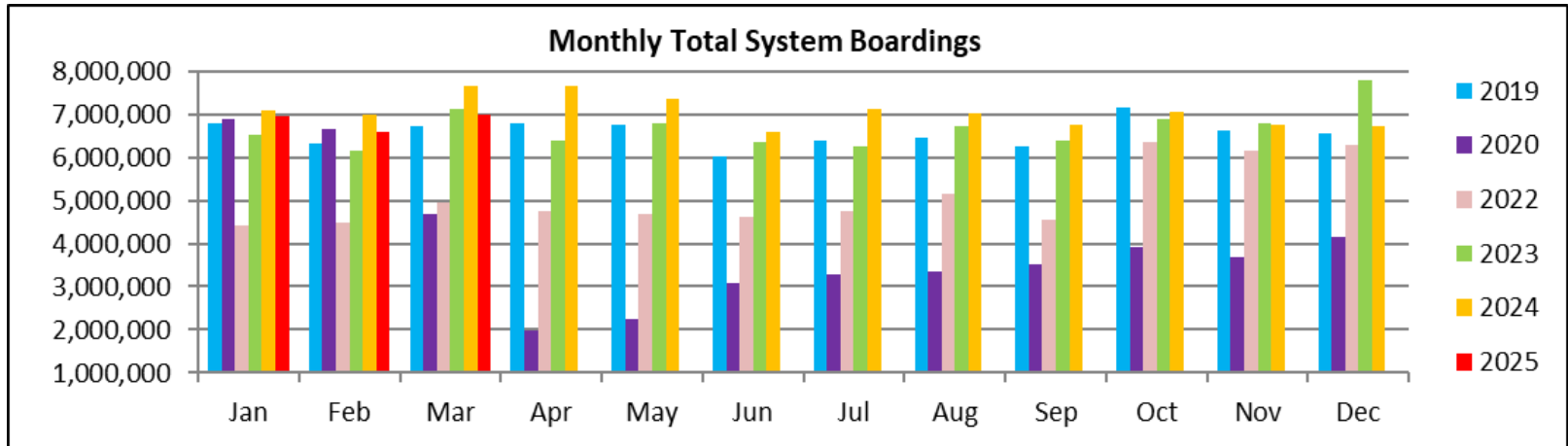
ALL-MODES COMBINED TOTAL MONTHLY RIDERSHIP COMPARISONS BY FISCAL YEAR

All Modes Month								Variance (*)	Variance (*)	Variance	Variance (**)	Variance	Variance	Variance
	FY 19	FY 20	FY 21	FY 22	FY 23	FY 24	FY 25	19 TO 20	20 TO 21	21 TO 22	22 TO 23	23 TO 24	24 TO 25	19 TO 25
Oct	7,265,208	7,144,116	3,922,096	4,429,727	6,369,413	6,894,684	7,049,348	-1.7%	-45.1%	12.9%	43.8%	8.2%	2.2%	-3.0%
Nov	6,783,315	6,610,671	3,672,591	4,436,825	6,155,460	6,782,205	6,745,554	-2.5%	-44.4%	20.8%	38.7%	10.2%	-0.5%	-0.6%
Dec	6,538,734	6,549,392	4,139,109	4,539,135	6,278,648	7,780,877	6,735,361	0.2%	-36.8%	9.7%	38.3%	23.9%	-13.4%	3.0%
Jan	6,797,602	6,890,225	4,235,761	4,411,086	6,523,666	7,106,759	6,949,585	1.4%	-38.5%	4.1%	47.9%	8.9%	-2.2%	2.2%
Feb	6,312,033	6,671,991	4,166,375	4,472,625	6,170,120	6,989,955	6,598,053	5.7%	-37.6%	7.4%	38.0%	13.3%	-5.6%	4.5%
Mar	6,712,624	4,694,315	4,993,168	4,960,115	7,108,423	7,647,481	7,007,535	-30.1%	6.4%	-0.7%	43.3%	7.6%	-8.4%	4.4%
Apr	6,802,085	1,989,545	4,883,356	4,743,830	6,388,943	7,660,083		-70.8%	145.5%	-2.9%	34.7%	19.9%		
May	6,755,829	2,258,413	4,982,012	4,690,521	6,780,746	7,358,013		-66.6%	120.6%	-5.9%	44.6%	8.5%		
Jun	6,026,467	3,082,213	3,794,581	4,625,876	6,363,861	6,575,872		-48.9%	23.1%	21.9%	37.6%	3.3%		
Jul	6,402,110	3,272,074	3,970,972	4,762,607	6,256,972	7,127,097		-48.9%	21.4%	19.9%	31.4%	13.9%		
Aug	6,460,375	3,335,847	4,048,215	5,144,796	6,712,978	7,028,229		-48.4%	21.4%	27.1%	30.5%	4.7%		
Sep	6,240,212	3,501,209	4,120,180	4,549,876	6,405,165	6,758,427		-43.9%	17.7%	10.4%	40.8%	5.5%		
FY Total	79,096,594	56,000,011	50,928,416	55,767,019	77,514,395	85,709,682		-29.2%	-9.1%	9.5%	39.0%	10.6%		

(*) The severe losses in ridership beginning in March 2020 are due to the SARS-CoV-2 pandemic, followed by an overall gradual recovery beginning in March 2021.

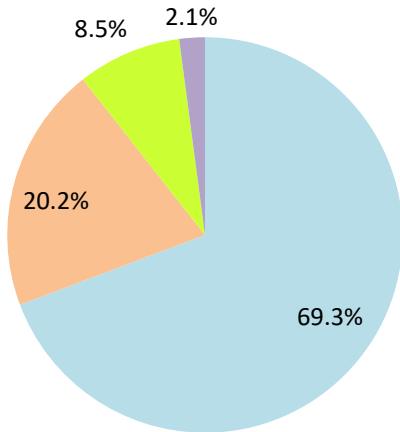
(**) The consistently very high increases seen at the start of FY 23 are largely due to the 10/01/2022 switchover from fareboxes to Automatic Passenger Counters in estimating ridership on the directly operated (non-contracted) bus routes.

TOTAL MONTHLY AND AVERAGE WEEKDAY RIDERSHIP YEAR OVER YEAR COMPARISON CHARTS – ALL MODES COMBINED



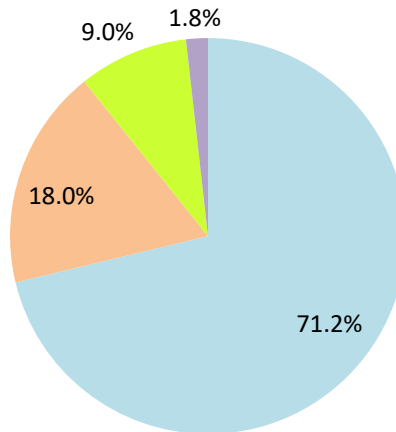
AVERAGE WEEKDAY RIDERSHIP - MODAL SPLITS

March 2025



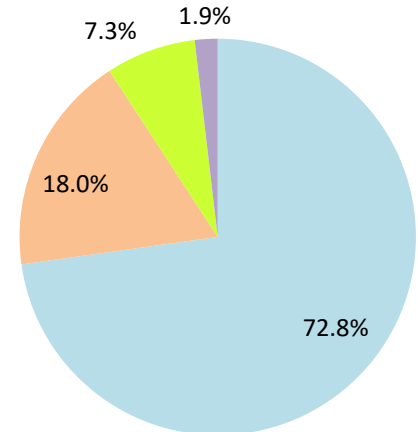
boardings

March 2024



boardings

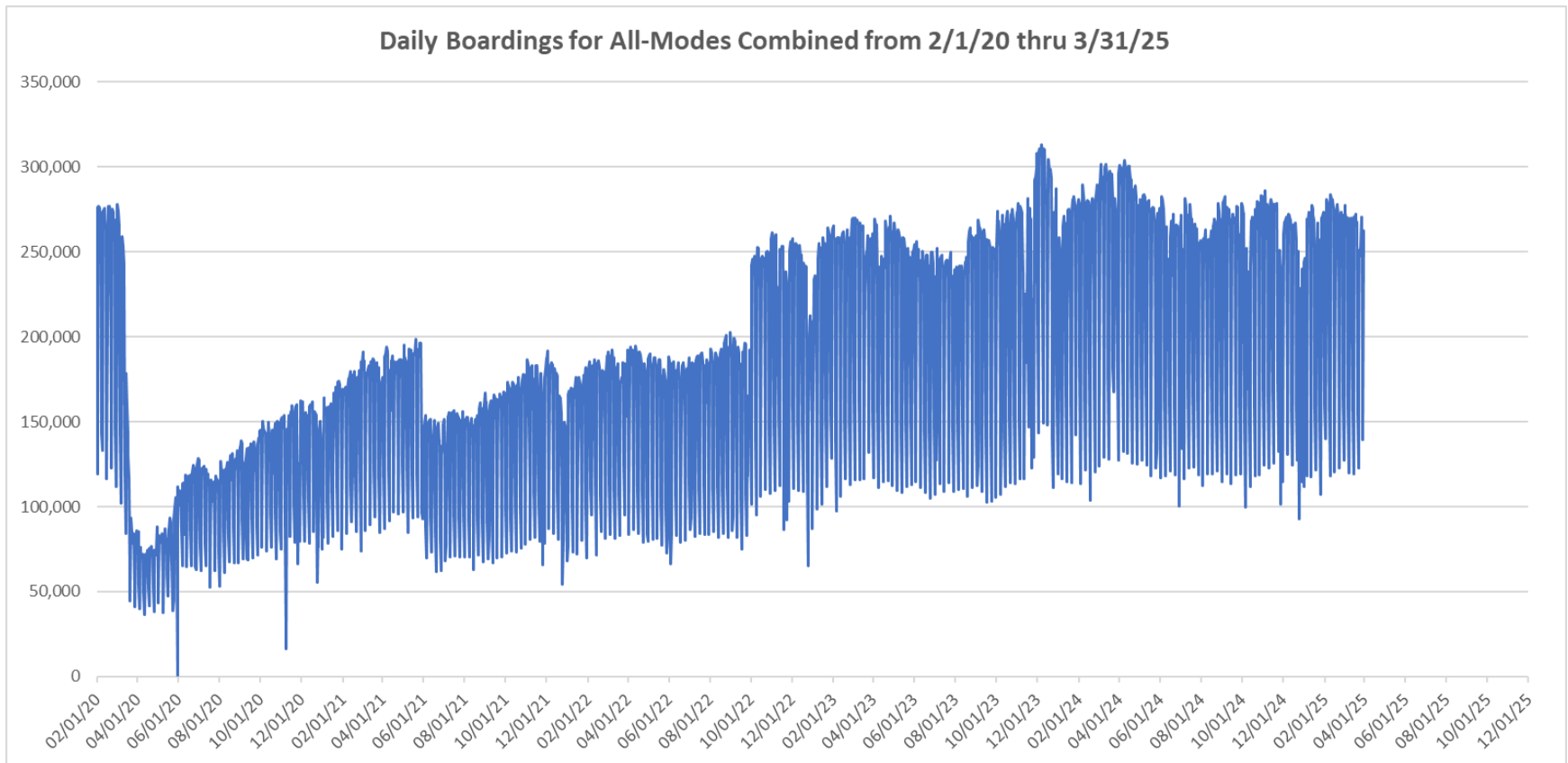
March 2023



boardings



DAILY RIDERSHIP FOR ALL MODES COMBINED SINCE FEBRUARY 1, 2020



- (1) There was no Metrobus, Metrorail and Metromover service on 5/31/20, as a safety precaution, and no service for any of the four modes on 9/28/22 as a result of Hurricane Ian..
- (2) The dip at the start of the second week of Nov-20 is due to Hurricane Eta.
- (3) Daily variations from Oct-22 onward are, for the Bus portion, a representation estimated from reports made available by the Bus APC data vendor and finalized sampling for each month.
- (4) The reduction seen beginning 6/1/21 is partly due to the resumption of fares for bus and rail, and partly the result of having resumed reporting Cubic farebox data rather than bus APC counts, as well as Cubic rail faregate counts instead of video camera counts on that date. The jump seen at the start of Oct-22 is due to the switch to APC bus ridership counts reporting begun on 10/1/22.
- (5) The pronounced peak in Dec-23 is attributable to the Better Bus Network launch period and attendant free fares.
- (6) Periodic (weekly) variations are prominent, since weekday ridership is almost always significantly higher than weekend or holiday ridership.

Metrobus



Better Bus Network (BBN, 11/13/2023 lineup) Bus Route Changes (Pt 1)

The listings below and on the following page are to serve as an aid in identifying individual routes for comparison of ridership data between periods prior to and following the launch of the BBN on 11/13/2023. In Nov-23, both old and new route numbers appear in data tables, since the launch took place near mid-month; beginning with Dec-23, only the current (BBN) numbering system appear in tables, to conveniently allow for direct comparisons.

BBN Route Numbering Changes:

Contracted **Route 1** was renumbered **Route 97**

Directly operated **Route 33** was renumbered **Route 103** (new, recycled number, not the same as former **Route 103 - C**)

Directly operated **Route 51** (Flagler MAX) was renumbered **Route 211** (recycled number, not the same as the OVERTOWN CIRCULATOR)

Contracted **Route 71** was renumbered **Route 107** (new, recycled number, not the same as **Route 107 - G** further below) and became directly operated

Directly operated **Route 79** was renumbered **Route 279** (79th Steet MAX)

Directly operated **Route 93** was renumbered **Route 203** (Biscayne MAX)

Directly operated **Route 99** was renumbered **Route 199**

Contracted **Route 101 - A** was renumbered **Route 15**

Directly operated **Route 102 - B** was renumbered **Route 26** (under the BBN's first phase, 07/24/2023 lineup)

Directly operated **Route 107 - G** (old, not the same as the **Route 107** appearing above) was renumbered **Route 125**

Directly operated **Route 112 - L** was renumbered **Route 79** (recycled number, not the same as the **Route 79** appearing above)

Directly operated **Route 120** was renumbered **Route 100**

Directly operated **Route 200** (CUTLER BAY LOCAL) was renumbered **Route 500** (recycled number, not the same as the **Route 500** further below)

Contracted **Route 210** was renumbered **Route 510** (SKYLAKE CIRCULATOR)

Contracted **Route 246** was renumbered **Route 401** (NORTH OWL)

Contracted **Route 248** (Princeton Circulator) was renumbered **Route 70** (recycled number, not the same as former **Route 70**)

Directly operated **Route 252** became contractor-operated, under the new name and number **Route 152**

Directly operated **Route 500** was renumbered **Route 400** (SOUTH OWL)

Coming soon, per UTA on 2/18/25: **Route 38** will be renumbered **Route 602**

*The above routes, along with many others who retained their numbering, underwent modifications in various ways (realignment, new headways, days of operation, etc., some major), as part of the BBN design and its resulting lineup. Details for each DTPW Bus route are provided in the Miami-Dade County website. (Directly operated **Route 2** became contractor-operated but kept its number).*

Better Bus Network (BBN, 11/13/2023 et seq. lineups) Bus Route Changes (Pt 2)

BBN New Routes:

Two new routes with new numbering, and later two new routes with recycled numbers were created to support the Better Bus Network:

Route 14 corresponds to a newly created route

Route 57 (recycled number) corresponds to a newly created route

Route 20 corresponds to a newly created route

Route 101 (recycled number, not the same as old Route 101 A, now

Route 15) corresponds to a newly created route

BBN Eliminated Routes:

The following routes were discontinued, as part of the Better Bus Network realignments:

Route 10

Route 105 - E

Route 212 (SWEETWATER CIRCULATOR)

Route 16

Route 108 - H

Route 217 (BUNCHE PARK CIRCULATOR)

Route 19

Route 110 - J

Route 238 (EAST-WEST CONNECTION)

Route 29

Route 113 - M

Route 241 (TUTTLE LIMITED)

Route 31 (BUSWAY LOCAL)

Route 115

Route 254 (BROWNSVILLE CIRCULATOR)

Route 42

Route 119 - S

Route 267 (LUDLAM LIMITED)

Route 46 (LIBERTY CITY CONNECTION)

Route 155 (BISCAYNE GARDENS CIRCULATOR)

Route 277 (7th AVENUE MAX)

Route 57

Route 202 (LITTLE HAITI CONNECTION)

Route 286 (NORTH POINTE CIRCULATOR)

Route 82 (WESTCHESTER CIRCULATOR)

Route 297 (27th AVENUE ORANGE MAX)

Route 103 - C (old, previously used numbering, not the same as the Route 103 in the list on the previous page)

Route 211 (OVERTOWN CIRCULATOR, previously used numbering, not the same as the Route 211 in the list on the previous page)

Previously Eliminated Routes:

The following five express routes were suspended soon after the start of the SARS-CoV-2 pandemic, and never reinstated; their ridership appears in some of the tables in this report, as then-components of the reported bus system performance metrics:

Route 175 (NW MIAMI-DADE EXPRESS)

Route 195 EXPRESS – BROWARD BLVD

Route 196 EXPRESS – BROWARD BLVD-CIVIC CENTER

Route 295 EXPRESS – SHERIDAN STREET

Route 296 EXPRESS – SHERIDAN STREET-CIVIC CENTER

The preceding listings are not exhaustive, and the reader is referred to the Miami-Dade County website for further BBN details or additional changes.

Six new MetroLink routes began running in July and August 2024 as a complement to the BBN; one (Alton Rd) is now the New Route 101 (different from old Route 101 / A).

METROBUS AVERAGE WEEKDAY BOARDINGS BY ROUTE (†)

Route	Average Weekday	Average Weekday	Percent Change	Average Weekday	Percent Change	Average Weekday	Percent Change	Average Weekday	Percent Change
	Mar-25	Feb-25	MOM	Oct-23	MO17M	Mar-24	YOY	Feb-20	Current vs Feb-20
weekdays									
2	2,100	2,422	-13.3%	2,977	-29.4%	2,115	-0.7%	3,102	-32.3%
3	7,612	7,783	-2.2%	5,416	40.5%	8,857	-14.1%	5,137	48.2%
7	3,405	3,571	-4.7%	4,021	-15.3%	4,501	-24.4%	3,501	-2.8%
8	4,772	5,021	-5.0%	4,650	2.6%	5,139	-7.1%	3,909	22.1%
9	10,733	10,912	-1.6%	6,490	65.4%	11,530	-6.9%	5,528	94.2%
10				2,443				2,482	
11	10,767	11,795	-8.7%	9,621	11.9%	11,928	-9.7%	7,292	47.6%
12	2,746	2,882	-4.7%	2,891	-5.0%	2,993	-8.2%	2,779	-1.2%
14	1,189	1,136	4.7%			1,251	-4.9%		
15	649	663	-2.2%	178	265.5%	441	47.3%	177	266.9%
16				2,009				1,862	
17	6,361	6,674	-4.7%	4,133	53.9%	7,158	-11.1%	3,878	64.0%
19				1,807				1,542	
20	2,384	2,418	-1.4%			4,520	-47.3%		
21	1,726	1,847	-6.6%	2,107	-18.1%	2,094	-17.6%	1,817	-5.0%
22	2,139	2,329	-8.2%	4,502	-52.5%	2,708	-21.0%	3,640	-41.2%
24-CORAL WAY LIMITED	2,345	2,365	-0.8%	2,195	6.8%	2,617	-10.4%	1,340	75.0%
26	2,387	2,445	-2.4%	1,877	27.2%	2,522	-5.3%	1,778	34.3%
27	8,613	8,672	-0.7%	7,110	21.1%	9,686	-11.1%	6,972	23.5%
29				516				534	
31-BUSWAY LOCAL								1,089	
32	2,369	2,458	-3.6%	2,699	-12.2%	2,034	16.5%	2,390	-0.9%
34 TRANSITWAY EXPRESS	1,733	1,876	-7.6%	1,636	5.9%	1,768	-2.0%	2,008	-13.7%
35	2,194	2,619	-16.2%	3,070	-28.5%	2,315	-5.2%	2,421	-9.4%
36	6,345	6,600	-3.9%	2,645	139.9%	6,926	-8.4%	2,536	150.2%
37	4,663	4,908	-5.0%	3,475	34.2%	5,352	-12.9%	3,273	42.5%
38 TRANSITWAY MAX	5,880	6,291	-6.5%	5,714	2.9%	7,198	-18.3%	6,361	-7.6%
39 TRANSITWAY EXPRESS	844	953	-11.4%	742	13.7%	801	5.4%	893	-5.4%
40	1,711	1,770	-3.3%	2,344	-27.0%	1,941	-11.8%	1,772	-3.4%
42				1,001				820	
46 - LIBERTY CITY CONN.				22				41	
52	1,489	1,578	-5.6%	1,390	7.1%	1,648	-9.6%	1,261	18.0%
54	2,765	2,865	-3.5%	3,086	-10.4%	3,082	-10.3%	2,940	-6.0%
56	288	282	2.1%	391	-26.4%	582	-50.6%	354	-18.6%
57				522				433	
new 57	185	186	-0.1%						
62	2,461	2,862	-14.0%	2,496	-1.4%	2,963	-16.9%	1,815	35.6%
70	278	316	-12.0%	161	72.5%	281	-1.0%	135	106.7%

(†) In this table and those which follow, "YOY" stands for "year-over-year", "MOM" for "month-over-month" and, e.g., "MOZM" for "month over Z months", i.e., current month vs 12 months prior, one month prior, and compared to pre-BBN, respectively. The Feb-20 numbers serve as a pre-pandemic benchmark. To see which routes are fully or partly operated under contract this month, please refer to the ranking table further in the Metrobus portion of this document.

METROBUS AVERAGE WEEKDAY BOARDINGS BY ROUTE

Route	Average Weekday	Average Weekday	Percent Change	Average Weekday	Percent Change	Average Weekday	Percent Change	Average Weekday	Percent Change
weekdays	Mar-25	Feb-25	MOM	Oct-23	MO17M	Mar-24	YOY	Feb-20	Current vs Feb-20
72	894	938	-4.7%	670	33.4%	875	2.1%	781	14.4%
73	1,264	1,388	-9.0%	2,868	-55.9%	1,432	-11.7%	2,124	-40.5%
75	3,024	3,111	-2.8%	1,594	89.7%	2,932	3.1%	1,429	111.7%
77	10,235	10,575	-3.2%	9,959	2.8%	11,737	-12.8%	7,129	43.6%
79	8,075	8,742	-7.6%	8,481	-4.8%	9,974	-19.0%	7,636	5.7%
82 - WESTCHESTER CIRC				61				62	
87	2,014	2,152	-6.4%	1,924	4.7%	2,361	-14.7%	1,499	34.3%
88	1,780	1,866	-4.6%	2,419	-26.4%	2,024	-12.1%	2,076	-14.3%
95-EXPRESS GOLDEN GLADES	1,476	1,513	-2.4%	1,195	23.5%	1,397	5.6%	2,893	-49.0%
97	228	263	-13.2%	225	1.6%	203	12.4%	184	23.9%
100	16,651	17,408	-4.3%	6,128	171.7%	18,376	-9.4%	6,667	149.7%
new 101	752	782	-3.8%						
103 - C								463	
103	1,760	1,813	-2.9%	1,967	-10.5%	2,230	-21.1%	1,687	4.3%
104	1,087	1,195	-9.0%	1,024	6.1%	1,200	-9.4%	837	29.9%
105 - E				1,402				1,287	
107	1,961	2,218	-11.6%	825	137.6%	2,308	-15.1%	711	175.9%
108 - H				487				473	
110 - J				2,955				2,508	
113 - M				887				866	
115				151				180	
119 - S				9,588				8,970	
125	4,266	4,655	-8.4%	2,099	103.2%	4,888	-12.7%	1,713	149.0%
132 -TRI-RAIL DORAL SHUTTLE	46	55	-15.9%	37	25.5%	45	0.9%	16	194.0%
135	1,980	2,027	-2.3%	1,755	12.8%	2,097	-5.6%	1,399	41.6%
136	150	150	0.5%	162	-7.0%	169	-10.8%	126	19.1%
137-WEST DADE CONNECTION	2,360	2,525	-6.6%	2,119	11.3%	2,541	-7.1%	1,626	45.1%
150-MIAMI BEACH AIRPORT EXPRESS	1,630	1,559	4.6%	2,149	-24.1%	1,776	-8.2%	1,867	-12.7%
152	356	348	2.2%	1,051	-66.2%	386	-8.0%	851	-58.2%
155 - BISCAYNE GARDENS CIRC				45				44	
175 - NW MIAMI-DADE EXPRESS								33	
183	4,886	5,168	-5.5%	3,653	33.8%	5,328	-8.3%	3,149	55.2%
199	1,910	1,898	0.6%	1,899	0.6%	2,052	-6.9%	1,473	29.7%
202 - LITTLE HAITI CONN				110				140	
203 - BISCAYNE MAX	1,014	1,114	-9.0%	3,666	-72.4%	1,252	-19.0%	3,334	-69.6%

METROBUS AVERAGE WEEKDAY BOARDINGS BY ROUTE

Route	Average Weekday	Average Weekday	Percent Change	Average Weekday	Percent Change	Average Weekday	Percent Change	Average Weekday	Percent Change
weekdays	Mar-25	Feb-25	MOM	Oct-23	MO17M	Mar-24	YOY	Feb-20	Current vs Feb-20
204 KILLIAN MAX	555	591	-6.2%	620	-10.5%	631	-12.2%	1,071	-48.2%
207 (7th St)-LITTLE HAVANA CONN	1,499	1,743	-14.0%	1,819	-17.6%	1,886	-20.5%	1,489	0.7%
208 (8th St)-LITTLE HAVANA CONN	1,571	1,688	-7.0%	1,659	-5.3%	1,757	-10.6%	1,308	20.1%
211 OVERTOWN CIRCULATOR				71				58	
211 - FLAGLER MAX	1,584	1,740	-9.0%	3,824	-58.6%	2,100	-24.6%	3,109	-49.1%
212-SWEETWATER CIRC				22				15	
217 - BUNCHE PARK CIRC				80				97	
238-EAST/WEST CONN				593				449	
241 TUTTLE LIMITED				348					
254-BROWNSVILLE CIRC				5				19	
267-LUDLAM LIMITED				162				149	
272 SUNSET MAX (*)	358	376	-4.8%	428	-16.4%	378	-5.2%	550	-34.9%
277-7TH AVENUE MAX				879				683	
279 - 79 STREET MAX	740	876	-15.5%	469	57.9%	970	-23.7%	361	104.9%
286-NORTH POINTE CIRC				93				97	
287-SAGA BAY MAX	328	335	-2.2%	341	-3.9%	402	-18.5%	358	-8.5%
288 KENDALL MAX	449	486	-7.7%	372	20.5%	504	-11.0%	762	-41.2%
297-27th AVENUE ORANGE MAX				1,229				1,356	
301-DADE MONROE EXPRESS	1,392	1,441	-3.4%	955	45.7%	1,054	32.1%	841	65.5%
302-CARD SOUND EXPRESS	119	167	-28.6%	91	31.7%	105	13.4%	86	38.4%
338 - WEEKEND EXPRESS									
344	153	156	-1.6%	76	102.0%	113	35.3%	96	59.5%
400 - SOUTH OWL	86	85	1.3%	71	21.1%	80	7.9%	81	5.9%
401 - NORTH OWL	74	67	10.4%	61	22.6%	65	14.4%	94	-20.5%
500 - CUTLER BAY LOCAL	170	173	-2.0%	176	-3.5%	292	-41.9%	158	7.6%
510 - SKYLAKE CIRCULATOR (*)	332	365	-9.1%	471	-29.6%	449	-26.2%	282	17.7%
836 EXPRESS	309	313	-1.1%	247	25.3%	332	-6.8%		
837 EXPRESS	239	236	1.3%	195	23.0%	191	25.6%		
MetroLink NoMi West	314	352	-10.6%						
MetroLink North Miami	226	222	1.8%						
MetroLink LeJeune	72	74	-2.4%						
MetroLink Killian Parkway	165	175	-5.8%						
MetroLink Alton Road									
MetroLink Opa-Locka	36	36	-0.3%						
AHEPA SHUTTLE	22	19	15.8%	18	23.9%	21	7.3%	21	6.0%
FEDERATION GARDENS SHUTTLE									
GREEN HILLS SHUTTLE	8	7	16.9%	5	46.2%	9	-15.6%	9	-15.6%
KINGS CREEK SHUTTLE	10	10	-4.9%	14	-29.1%	10	-4.9%	13	-25.0%
MEEK / MARQUESS SHUTTLE	11	17	-35.3%						
ROBERT SHARP SHUTTLE	27	31	-12.3%	23	16.3%	29	-7.0%	10	181.6%
SIERRA LAKES SHUTTLE	22	24	-8.3%	16	41.9%	22	-1.8%	45	-51.1%
Total	183,802	193,763	-5.1%	185,320	-0.8%	205,935	-10.7%	167,711	9.6%

(1) Includes shuttles and those routes which were not run some years.

(2) Several express routes were suspended beginning at the end of Mar-20, due to the SARS-CoV-2 pandemic, while other routes had alignment and schedule modifications made to them, in an ongoing effort to optimize service delivery.

METROBUS AVERAGE SATURDAY BOARDINGS BY ROUTE

Route	Average Saturday	Average Saturday	Percent Change	Average Saturday	Percent Change	Average Saturday	Percent Change	Average Saturday	Percent Change
Saturdays	Mar-25	Feb-25	MOM	Oct-23	MO17M	Mar-24	YOY	Feb-20	Current vs Feb-20
2	1,040	1,199	-13.2%	1,605	-35.2%	947	9.9%	1,616	-35.7%
3	6,111	6,380	-4.2%	5,754	6.2%	6,967	-12.3%	5,229	16.9%
7	1,973	1,966	0.4%	1,972	0.1%	2,380	-17.1%	1,887	4.5%
8	2,261	2,287	-1.1%	2,334	-3.1%	2,643	-14.5%	2,027	11.5%
9	7,429	6,893	7.8%	3,677	102.0%	7,580	-2.0%	3,034	144.9%
10				2,107				1,896	
11	8,451	8,036	5.2%	5,787	46.0%	8,863	-4.6%	5,182	63.1%
14	920	972	-5.3%			1,101	-16.5%		
15	534	523	2.2%	93	473.1%	350	52.8%	71	654.8%
16				1,662				1,566	
17	4,565	4,712	-3.1%	2,553	78.8%	4,359	4.7%	2,363	93.2%
20	1,972	2,052	-3.9%			3,567	-44.7%		
22	1,414	1,482	-4.6%	2,425	-41.7%	1,491	-5.2%	2,084	-32.1%
24-CORAL WAY LIMITED	1,691	1,630	3.7%	1,400	20.8%	1,858	-9.0%	1,165	45.1%
26	1,135	1,258	-9.8%	966	17.5%	1,250	-9.2%	851	33.4%
27	5,685	5,620	1.2%	4,006	41.9%	6,803	-16.4%	4,034	40.9%
31-BUSWAY LOCAL								896	
32	1,467	1,505	-2.5%	1,261	16.3%	1,117	31.3%	1,029	42.6%
35	1,666	1,756	-5.1%	1,540	8.2%	1,589	4.9%	1,372	21.4%
36	4,654	4,791	-2.9%	1,677	177.6%	4,903	-5.1%	1,289	260.9%
37	2,902	3,007	-3.5%	2,062	40.8%	3,057	-5.1%	2,090	38.8%
38 TRANSITWAY MAX	5,070	5,353	-5.3%	6,328	-19.9%	6,015	-15.7%	4,715	7.5%
40	1,061	1,100	-3.6%	926	14.5%	1,028	3.2%	655	62.1%
42				617				552	
52	979	999	-2.0%	694	41.2%	1,196	-18.1%	686	42.8%
54	1,851	1,831	1.1%	1,925	-3.8%	2,036	-9.1%	1,727	7.2%
56	108	101	7.1%			254	-57.3%		
new 57	80	61	30.5%						
62	1,902	1,898	0.2%	1,823	4.3%	1,905	-0.2%	1,343	41.6%
70	209	218	-4.1%			163	27.7%		
72	498	566	-12.1%	357	39.6%	485	2.5%	350	42.3%
73	539	574	-6.1%	1,202	-55.1%	594	-9.2%	860	-37.4%
75	2,003	1,986	0.9%	550	264.2%	1,892	5.9%	468	328.0%
77	7,371	6,893	6.9%	5,510	33.8%	7,692	-4.2%	4,197	75.6%
79	6,367	6,497	-2.0%	7,094	-10.2%	7,323	-13.1%	5,667	12.4%
82 - WESTCHESTER CIRC				38				50	

METROBUS AVERAGE SATURDAY BOARDINGS BY ROUTE

Route	Average Saturday	Average Saturday	Percent Change	Average Saturday	Percent Change	Average Saturday	Percent Change	Average Saturday	Percent Change
Saturdays	Mar-25	Feb-25	MOM	Oct-23	MO17M	Mar-24	YOY	Feb-20	Current vs Feb-20
87	954	928	2.9%	532	79.5%	993	-3.9%	402	137.1%
88	1,456	1,507	-3.4%	1,661	-12.3%	1,576	-7.6%	1,620	-10.1%
97	167	187	-10.6%	163	2.2%	165	1.2%	215	-22.4%
100	13,783	14,458	-4.7%	5,637	144.5%	15,018	-8.2%	4,744	190.5%
103 - C								315	
103	1,123	1,111	1.1%	1,239	-9.4%	1,358	-17.3%	951	18.1%
104	756	823	-8.1%	445	70.1%	860	-12.1%	468	61.4%
105 - E				772				619	
107	1,230	1,182	4.0%	238	417.9%	1,571	-21.7%	252	388.5%
108 - H				401				372	
110 - J				1,394				1,952	
113 - M				577				503	
115				80				82	
119 - S				8,118				6,861	
125	2,810	2,752	2.1%	1,297	116.7%	3,114	-9.8%	1,066	163.6%
135	1,001	987	1.4%	556	80.1%	914	9.5%	539	85.9%
137-WEST DADE CONNECTION	1,541	1,561	-1.2%	1,337	15.3%	1,516	1.6%	1,027	50.0%
150-MIAMI BEACH AIRPORT EXPRESS	1,481	1,510	-1.9%	2,161	-31.5%	1,597	-7.2%	1,604	-7.7%
152	246	236	4.1%	375	-34.5%	229	7.2%	302	-18.7%
183	2,921	2,960	-1.3%	1,960	49.1%	3,152	-7.3%	1,790	63.2%
195 EXPRESS - BROWARD BLVD									
196 EXPRESS - SHERIDAN ST									
199	1,426	1,242	14.8%	1,106	28.9%	1,359	4.9%	849	68.0%
202 - LITTLE HAITI CONN				22				50	
207 (7th St)-LITTLE HAVANA CONN	861	853	0.9%	929	-7.3%	818	5.3%	1,032	-16.6%
208 (8th St)-LITTLE HAVANA CONN	858	989	-13.2%	1,030	-16.7%	903	-5.0%	1,044	-17.8%
241 TUTTLE LIMITED				222					
286-NORTH POINTE CIRC				61				41	
295									
296									
301-DADE MONROE EXPRESS	1,410	1,454	-3.0%	885	59.4%	958	47.2%	801	76.1%
302-CARD SOUND EXPRESS	149	166	-10.6%	94	58.1%	100	48.3%	57	162.5%
338 - WEEKEND EXPRESS	183	179	2.1%	259	-29.4%	235	-22.2%	237	-22.7%
344	117	116	0.8%			74	57.5%		
400 - SOUTH OWL	109	94	16.6%	104	5.1%	102	7.3%	70	55.7%
401 - NORTH OWL	77	69	11.6%	61	27.3%	76	1.0%	84	-8.8%
500 - CUTLER BAY LOCAL	185	170	9.0%	152	21.9%	217	-14.8%	119	55.2%
510 - SKYLAKE CIRCULATOR (*)	118	102	15.3%	217	-45.9%	261	-55.0%	165	-28.7%
12/21 WEEKEND INTERLINE	2,578	2,680	-3.8%	3,290	-21.6%	3,006	-14.2%	2,528	2.0%
FEDERATION GARDENS SHUTTLE	30	31	-3.3%	20	48.8%	22	34.0%	28	4.8%
Total	121,477	122,488	-0.8%	107,331	13.2%	131,602	-7.7%	93,742	29.6%

METROBUS AVERAGE SUNDAY BOARDINGS BY ROUTE

Route	Average Sunday	Average Sunday	Percent Change	Average Sunday	Percent Change	Average Sunday	Percent Change	Average Sunday	Percent Change
Sundays	Mar-25	Feb-25	MOM	Oct-23	MO17M	Mar-24	YOY	Feb-20	Current vs Feb-20
2	913	957	-4.6%	1,214	-24.8%	773	18.2%	1,335	-31.6%
3	4,986	4,486	11.1%	4,408	13.1%	5,304	-6.0%	4,353	14.6%
7	1,508	1,527	-1.2%	1,632	-7.6%	1,776	-15.1%	1,654	-8.8%
8	1,587	1,669	-4.9%	1,838	-13.7%	1,706	-7.0%	1,746	-9.1%
9	4,756	4,783	-0.6%	2,756	72.6%	4,870	-2.3%	2,549	86.6%
10				1,632				1,441	
11	5,543	5,418	2.3%	3,803	45.7%	6,439	-13.9%	3,917	41.5%
14	1,125	1,182	-4.8%			1,068	5.4%		
15	497	515	-3.4%	53	838.5%	293	69.9%	56	796.2%
16				1,023				997	
17	3,087	3,059	0.9%	1,920	60.8%	3,114	-0.9%	1,833	68.4%
20	1,498	1,550	-3.3%			2,558	-41.4%		
22	988	1,050	-5.9%	1,915	-48.4%	1,095	-9.8%	1,548	-36.2%
24-CORAL WAY LIMITED	1,117	1,231	-9.2%	1,108	0.8%	1,325	-15.7%	905	23.5%
26	1,031	1,025	0.6%	871	18.4%	1,078	-4.3%	717	43.9%
27	3,780	3,593	5.2%	3,146	20.2%	4,208	-10.2%	2,918	29.5%
31-BUSWAY LOCAL								715	
32	1,087	1,174	-7.4%	768	41.5%	836	30.0%	772	40.8%
35	1,312	1,364	-3.8%	1,175	11.6%	1,331	-1.5%	942	39.4%
36	3,583	3,620	-1.0%	1,160	208.8%	3,919	-8.6%	1,111	222.6%
37	2,144	2,167	-1.0%	1,755	22.2%	2,366	-9.4%	1,739	23.3%
38 TRANSITWAY MAX	3,695	3,873	-4.6%	4,957	-25.5%	5,104	-27.6%	4,147	-10.9%
40	673	800	-15.9%	542	24.1%	836	-19.5%	447	50.5%
42				425				416	
52	899	809	11.1%	496	81.1%	859	4.6%	466	92.8%
54	1,179	1,126	4.7%	1,181	-0.1%	1,267	-6.9%	1,171	0.7%
62	1,167	1,157	0.8%	1,040	12.2%	1,253	-6.9%	891	31.0%
70	186	182	2.6%			150	23.8%		
72	415	427	-2.8%	259	60.0%	439	-5.6%	265	56.8%
73	233	261	-10.6%	602	-61.3%	247	-5.7%	495	-52.9%
75	1,502	1,442	4.1%	352	327.2%	1,379	8.9%	271	454.8%
77	5,068	4,557	11.2%	3,980	27.3%	4,866	4.2%	2,815	80.1%
79	5,101	5,003	2.0%	4,837	5.5%	5,846	-12.7%	4,804	6.2%

METROBUS AVERAGE SUNDAY BOARDINGS BY ROUTE

Route	Average Sunday	Average Sunday	Percent Change	Average Sunday	Percent Change	Average Sunday	Percent Change	Average Sunday	Percent Change
Sundays	Mar-25	Feb-25	MOM	Oct-23	MO17M	Mar-24	YOY	Feb-20	Current vs Feb-20
87	510	511	-0.1%	362	41.0%	524	-2.7%	319	59.9%
88	1,081	1,109	-2.5%	1,255	-13.9%	1,159	-6.7%	1,286	-15.9%
97	155	157	-1.4%	149	4.0%	150	2.9%	201	-22.9%
100	9,942	10,053	-1.1%	3,492	184.7%	10,743	-7.5%	3,469	186.6%
103 - C								212	
103	758	769	-1.4%	729	4.0%	846	-10.4%	607	24.9%
104	537	518	3.6%	348	54.4%	560	-4.2%	317	69.4%
105 - E				634				616	
107	1,026	1,017	0.9%	187	448.7%	1,161	-11.6%	162	533.3%
108 - H				363				328	
110 - J				1,699				1,638	
113 - M				444				431	
115				66				80	
119 - S				7,612				7,141	
125	1,999	1,928	3.7%	1,036	93.0%	1,996	0.2%	895	123.3%
135	692	712	-2.8%	474	46.1%	650	6.4%	349	98.1%
137-WEST DADE CONNECTION	1,115	1,166	-4.4%	956	16.7%	1,140	-2.2%	879	26.8%
150-MIAMI BEACH AIRPORT EXPRESS	1,395	1,449	-3.7%	1,966	-29.1%	1,765	-21.0%	1,574	-11.3%
152	176	152	15.7%	331	-47.0%	128	37.2%	199	-11.6%
183	2,091	2,106	-0.7%	1,569	33.2%	2,207	-5.2%	1,413	48.0%
199	1,014	1,023	-0.9%	887	14.3%	1,004	1.0%	658	54.1%
202 - LITTLE HAITI CONN				21				39	
207 (7th St)-LITTLE HAVANA CONN	565	596	-5.1%	648	-12.8%	709	-20.4%	796	-29.0%
208 (8th St)-LITTLE HAVANA CONN	711	775	-8.3%	862	-17.5%	733	-2.9%	911	-22.0%
241 TUTTLE LIMITED				187					
301-DADE MONROE EXPRESS	1,293	1,318	-1.9%	867	49.2%	911	42.0%	751	72.1%
302-CARD SOUND EXPRESS	109	113	-3.3%	72	52.2%	86	27.0%	57	91.2%
338 - WEEKEND EXPRESS	159	144	10.6%	247	-35.7%	168	-5.6%	252	-36.9%
400 - SOUTH OWL	81	71	13.7%	70	15.7%	109	-25.4%	83	-2.1%
401 - NORTH OWL	87	81	7.6%	65	34.1%	80	7.7%	87	-0.5%
500 - CUTLER BAY LOCAL	85	86	-0.6%	86	-1.4%	104	-18.6%	59	45.3%
510 - SKYLAKE CIRCULATOR (*)	120	105	14.0%	194	-38.2%	313	-61.6%	143	-16.1%
12/21 WEEKEND INTERLINE	2,085	2,154	-3.2%	2,700	-22.8%	2,491	-16.3%	2,048	1.8%
Total	88,446	88,114	0.4%	81,427	8.6%	96,041	-7.9%	75,428	17.3%

METROBUS TOTAL MONTHLY BOARDINGS BY ROUTE

Route	Total Month	Total Month	Percent Change	Total Month	Percent Change	Total Month	Percent Change	Total Month	Percent Change
total month	Mar-25	Feb-25	MOM	Oct-23	MO17M	Mar-24	YOY	Feb-20	Current vs Feb-20
2	53,873	57,063	-5.6%	77,976	-30.9%	53,003	1.6%	75,463	-28.6%
3	215,335	199,118	8.1%	164,203	31.1%	247,361	-12.9%	146,294	47.2%
7	88,900	85,394	4.1%	104,507	-14.9%	115,307	-22.9%	86,077	3.3%
8	119,449	116,236	2.8%	120,821	-1.1%	129,663	-7.9%	95,295	25.3%
9	286,310	264,937	8.1%	171,265	67.2%	304,385	-5.9%	135,924	110.6%
10				70,338				64,874	
11	296,072	289,721	2.2%	253,837	16.6%	327,004	-9.5%	187,425	58.0%
12	57,674	57,632	0.1%	63,603	-9.3%	62,859	-8.2%	55,585	3.8%
14	35,203	31,336	12.3%			37,120	-5.2%		
15	18,789	17,419	7.9%	4,545	313.4%	12,467	50.7%	4,114	356.7%
16				55,959				49,061	
17	171,838	164,555	4.4%	110,727	55.2%	187,674	-8.4%	96,715	77.7%
19				39,745				30,847	
20	67,423	62,775	7.4%			125,553	-46.3%		
21	36,249	36,947	-1.9%	46,355	-21.8%	43,972	-17.6%	36,341	-0.3%
22	56,920	56,699	0.4%	118,329	-51.9%	69,795	-18.4%	89,404	-36.3%
24-CORAL WAY LIMITED	63,281	58,741	7.7%	59,432	6.5%	70,874	-10.7%	36,237	74.6%
26	60,964	58,034	5.0%	49,521	23.1%	64,595	-5.6%	42,683	42.8%
27	228,199	210,281	8.5%	188,160	21.3%	258,452	-11.7%	171,282	33.2%
29				11,342				10,684	
31-BUSWAY LOCAL								29,125	
32	62,525	59,871	4.4%	68,263	-8.4%	52,491	19.1%	56,027	11.6%
34 TRANSITWAY EXPRESS	36,397	37,525	-3.0%	36,002	1.1%	37,138	-2.0%	40,159	-9.4%
35	60,961	64,851	-6.0%	79,573	-23.4%	63,221	-3.6%	59,041	3.3%
36	174,423	165,635	5.3%	70,698	146.7%	189,545	-8.0%	61,606	183.1%
37	123,151	118,857	3.6%	93,471	31.8%	139,516	-11.7%	82,870	48.6%
38 TRANSITWAY MAX	167,312	162,722	2.8%	175,803	-4.8%	206,754	-19.1%	167,379	0.0%
39 TRANSITWAY EXPRESS	17,729	19,056	-7.0%	16,333	8.5%	16,823	5.4%	17,853	-0.7%
40	44,608	43,010	3.7%	57,992	-23.1%	50,090	-10.9%	40,497	10.2%
42				26,611				20,825	
46 - LIBERTY CITY CONN.				477				814	
52	40,655	38,784	4.8%	35,844	13.4%	44,875	-9.4%	30,522	33.2%
54	73,214	69,139	5.9%	81,490	-10.2%	81,240	-9.9%	72,125	1.5%
56	6,584	6,040	9.0%	8,598	-23.4%	13,488	-51.2%	7,071	-6.9%
57				11,491				8,665	
new 57	4,293	3,957	8.5%						
62	67,024	69,453	-3.5%	67,398	-0.6%	78,013	-14.1%	46,582	43.9%
70	7,813	7,914	-1.3%	3,546	120.3%	7,465	4.7%	2,690	190.4%

METROBUS TOTAL MONTHLY BOARDINGS BY ROUTE

Route	Total Month	Total Month	Percent Change	Total Month	Percent Change	Total Month	Percent Change	Total Month	Percent Change
total month	Mar-25	Feb-25	MOM	Oct-23	MO17M	Mar-24	YOY	Feb-20	Current vs Feb-20
72	23,329	22,736	2.6%	17,459	33.6%	22,997	1.4%	18,433	26.6%
73	30,397	31,108	-2.3%	70,903	-57.1%	34,266	-11.3%	48,767	-37.7%
75	81,026	75,936	6.7%	39,021	107.6%	77,919	4.0%	31,994	153.3%
77	277,123	257,292	7.7%	261,039	6.2%	309,258	-10.4%	174,833	58.5%
79	226,911	220,846	2.7%	239,146	-5.1%	275,303	-17.6%	200,268	13.3%
82 - WESTCHESTER CIRC				1,488				1,482	
87	49,616	48,793	1.7%	46,254	7.3%	57,171	-13.2%	33,273	49.1%
88	50,071	47,784	4.8%	66,138	-24.3%	56,185	-10.9%	54,772	-8.6%
95-EXPRESS GOLDEN GLADES	31,004	30,256	2.5%	26,295	17.9%	29,346	5.6%	57,860	-46.4%
97	6,397	6,626	-3.5%	6,337	0.9%	5,838	9.6%	5,558	15.1%
100	468,294	446,204	5.0%	174,819	167.9%	514,701	-9.0%	170,942	173.9%
new 101	15,800	15,639	1.0%						
103 - C								11,682	
103	46,360	43,782	5.9%	51,871	-10.6%	57,847	-19.9%	40,918	13.3%
104	29,293	29,263	0.1%	26,049	12.5%	32,294	-9.3%	20,351	43.9%
105 - E				37,092				31,302	
107	52,452	53,146	-1.3%	20,040	161.7%	62,130	-15.6%	16,118	225.4%
108 - H				14,133				12,624	
110 - J				79,080				66,481	
113 - M				24,040				21,548	
115				3,968				4,334	
119 - S				281,456				242,257	
125	113,628	111,816	1.6%	56,547	100.9%	128,189	-11.4%	43,178	163.2%
132 -TRI-RAIL DORAL SHUTTLE	963	1,090	-11.7%	804	19.8%	954	0.9%	312	208.7%
135	50,049	47,335	5.7%	43,211	15.8%	51,855	-3.5%	32,067	56.1%
136	3,157	2,993	5.5%	3,557	-11.2%	3,539	-10.8%	2,524	25.1%
137-WEST DADE CONNECTION	62,832	61,413	2.3%	56,750	10.7%	66,636	-5.7%	41,167	52.6%
150-MIAMI BEACH AIRPORT EXPRESS	48,620	43,019	13.0%	65,763	-26.1%	54,101	-10.1%	51,651	-5.9%
152	9,572	8,509	12.5%	26,285	-63.6%	9,899	-3.3%	19,325	-50.5%
155 - BISCAYNE GARDENS CIRC				985				881	
175 - NW MIAMI-DADE EXPRESS								661	
183	127,666	123,618	3.3%	96,050	32.9%	138,690	-7.9%	77,570	64.6%
199	52,308	47,014	11.3%	50,634	3.3%	54,913	-4.7%	36,325	44.0%
202 - LITTLE HAITI CONN				2,620				3,200	
203 - BISCAYNE MAX	21,285	22,276	-4.4%	80,650	-73.6%	26,284	-19.0%	66,684	-68.1%

METROBUS TOTAL MONTHLY BOARDINGS BY ROUTE

Route	Total Month	Total Month	Percent Change	Total Month	Percent Change	Total Month	Percent Change	Total Month	Percent Change
total month	Mar-25	Feb-25	MOM	Oct-23	MO17M	Mar-24	YOY	Feb-20	Current vs Feb-20
204 KILLIAN MAX	11,645	11,822	-1.5%	13,632	-14.6%	13,257	-12.2%	21,418	-45.6%
207 (7th St)-LITTLE HAVANA CONN	38,608	40,646	-5.0%	46,970	-17.8%	47,252	-18.3%	38,127	1.3%
208 (8th St)-LITTLE HAVANA CONN	40,829	40,824	0.0%	44,922	-9.1%	45,064	-9.4%	35,018	16.6%
211 OVERTOWN CIRCULATOR				1,567				1,159	
211 - FLAGLER MAX	33,263	34,798	-4.4%	84,135	-60.5%	44,100	-24.6%	62,186	-46.5%
212-SWEETWATER CIRC				494				295	
217 - BUNCHE PARK CIRC				1,759				1,949	
238-EAST/WEST CONN				13,036				8,987	
241 TUTTLE LIMITED				9,471					
254-BROWNSVILLE CIRC				105				384	
267-LUDLAM LIMITED				3,567				2,978	
272 SUNSET MAX (*)	7,519	7,521	0.0%	9,423	-20.2%	7,934	-5.2%	11,004	-31.7%
277-7TH AVENUE MAX				19,345				13,669	
279 - 79 STREET MAX	15,549	17,529	-11.3%	10,318	50.7%	20,370	-23.7%	7,228	115.1%
286-NORTH POINTE CIRC				2,279				2,145	
287-SAGA BAY MAX	6,881	6,698	2.7%	7,499	-8.2%	8,444	-18.5%	7,160	-3.9%
288 KENDALL MAX	9,422	9,727	-3.1%	8,189	15.1%	10,584	-11.0%	15,249	-38.2%
297-27th AVENUE ORANGE MAX				27,047				27,125	
301-DADE MONROE EXPRESS	42,754	39,910	7.1%	28,889	48.0%	31,478	35.8%	23,838	79.4%
302-CARD SOUND EXPRESS	3,794	4,461	-15.0%	2,728	39.1%	3,140	20.8%	2,236	69.7%
338 - WEEKEND EXPRESS	1,710	1,292	32.4%	2,274	-24.8%	2,018	-15.3%	2,191	-22.0%
344	3,799	3,575	6.3%	1,666	128.0%	2,747	38.3%	1,919	98.0%
400 - SOUTH OWL	2,752	2,353	17.0%	2,324	18.4%	2,721	1.1%	2,301	19.6%
401 - NORTH OWL	2,379	1,945	22.3%	1,899	25.3%	2,147	10.8%	2,641	-9.9%
500 - CUTLER BAY LOCAL	4,914	4,484	9.6%	4,907	0.1%	7,745	-36.6%	3,984	23.3%
510 - SKYLAKE CIRCULATOR (*)	8,154	8,124	0.4%	12,211	-33.2%	12,305	-33.7%	7,033	15.9%
836 EXPRESS	6,492	6,253	3.8%	5,428	19.6%	6,968	-6.8%		
837 EXPRESS	5,028	4,726	6.4%	4,281	17.4%	4,003	25.6%		
MetroLink NoMi West	6,602	7,030	-6.1%						
MetroLink North Miami	4,751	4,445	6.9%						
MetroLink LeJeune	1,515	1,478	2.5%						
MetroLink Killian Parkway	3,298	3,500	-5.8%						
MetroLink Alton Road									
MetroLink Opa-Locka	719	721	-0.3%						
12/21 WEEKEND INTERLINE	23,315	19,338	20.6%	26,661	-12.6%	27,485	-15.2%	20,830	11.9%
AHEPA SHUTTLE	88	76	15.8%	71	23.9%	82	7.3%	83	6.0%
FEDERATION GARDENS SHUTTLE	119	123	-3.3%	80	48.8%	111	7.2%	142	-16.2%
GREEN HILLS SHUTTLE	38	26	46.2%	26	46.2%	36	5.6%	36	5.6%
KINGS CREEK SHUTTLE	39	41	-4.9%	55	-29.1%	41	-4.9%	52	-25.0%
MEEK / MARQUESS SHUTTLE	44	68	-35.3%						
ROBERT SHARP SHUTTLE	107	122	-12.3%	92	16.3%	115	-7.0%	38	181.6%
SIERRA LAKES SHUTTLE	88	96	-8.3%	62	41.9%	112	-21.4%	180	-51.1%
Total	4,907,536	4,715,948	4.1%	4,912,151	-0.1%	5,461,317	-10.1%	4,123,083	19.0%

BUS RIDERSHIP BY ROUTE SERVICE COMPARISON (MONTH-OVER-MONTH)

Boardings by Service Type and Route	Average Weekday	Average Weekday	Percent Change	Average Saturday	Average Saturday	Percent Change	Average Sunday	Average Sunday	Percent Change	Total Monthly	Total Monthly	Percent Change
	Mar-25	Feb-25	MOM	Mar-25	Feb-25	MOM	Mar-25	Feb-25	MOM	Mar-25	Feb-25	MOM
Directly Operated Express Routes												
34 TRANSITWAY EXPRESS	1,733	1,876	-7.6%							36,397	37,525	-3.0%
39 TRANSITWAY EXPRESS	844	953	-11.4%							17,729	19,056	-7.0%
95-EXPRESS GOLDEN GLADES	1,476	1,513	-2.4%							31,004	30,256	2.5%
150-MIAMI BEACH AIRPORT EXPRESS	1,630	1,559	4.6%	1,481	1,510	-1.9%	1,395	1,449	-3.7%	48,620	43,019	13.0%
338 - WEEKEND EXPRESS				183	179	2.1%	159	144	10.6%	1,710	1,292	32.4%
836 EXPRESS	309	313	-1.1%							6,492	6,253	3.8%
837 EXPRESS	239	236	1.3%							5,028	4,726	6.4%
Subtotal Express Routes	6,233	6,450	-3.4%	1,664	1,690	-1.5%	1,554	1,593	-2.4%	146,980	142,127	3.4%
Percentage of All Bus Routes	3.4%	3.3%		1.4%	1.4%		1.8%	1.8%		3.0%	3.0%	
Contracted Routes - Local Service (*)												
2	2,100	2,422	-13.3%	1,040	1,199	-13.2%	913	957	-4.6%	53,873	57,063	-5.6%
15	649	663	-2.2%	534	523	2.2%	497	515	-3.4%	18,789	17,419	7.9%
29												
46 - LIBERTY CITY CONN.												
56	288	282	2.1%	108	101	7.1%				6,584	6,040	9.0%
new 57	185	186	-0.1%	80	61	30.5%				4,293	3,957	8.5%
70	278	316	-12.0%	209	218	-4.1%	186	182	2.6%	7,813	7,914	-1.3%
72	894	938	-4.7%	498	566	-12.1%	415	427	-2.8%	23,329	22,736	2.6%
82 - WESTCHESTER CIRC												
97	228	263	-13.2%	167	187	-10.6%	155	157	-1.4%	6,397	6,626	-3.5%
115												
152	356	348	2.2%	246	236	4.1%	176	152	15.7%	9,572	8,509	12.5%
155 - BISCAYNE GARDENS CIRC												
202 - LITTLE HAITI CONN												
211 OVERTOWN CIRCULATOR												
212-SWEETWATER CIRC												
217 - BUNCHE PARK CIRC												
254-BROWNSVILLE CIRC												
267-LUDLAM LIMITED												
286-NORTH POINTE CIRC												
344	153	156	-1.6%	117	116	0.8%				3,799	3,575	6.3%
401 - NORTH OWL	74	67	10.4%	77	69	11.6%	87	81	7.6%	2,379	1,945	22.3%
MetroLink NoMi West	314	352	-10.6%							6,602	7,030	-6.1%
MetroLink North Miami	226	222	1.8%							4,751	4,445	6.9%
MetroLink LeJeune	72	74	-2.4%							1,515	1,478	2.5%
MetroLink Killian Parkway	165	175	-5.8%							3,298	3,500	-5.8%
MetroLink Opa-Locka	36	36	-0.3%							719	721	-0.3%
Subtotal Contracted Reg. & Circ. Routes	6,019	6,499	-7.4%	3,075	3,276	-6.1%	2,429	2,469	-1.6%	153,713	152,958	0.5%
Percentage of All Bus Routes	3.3%	3.4%		2.5%	2.7%		2.7%	2.8%		3.1%	3.2%	

- (1) Several express routes were suspended beginning at the end of Mar-20, due to the SARS-CoV-2 pandemic, while other routes had alignment and schedule modifications made to them, in an ongoing effort to optimize service delivery.
- (2) A second major round of changes took place with the 11/13/23 lineup known as the Better Bus Network, as listed at the start of this Metrobus section.

BUS RIDERSHIP BY ROUTE SERVICE COMPARISON (MONTH-OVER-MONTH)

Boardings by Service Type and Route	Average Weekday	Average Weekday	Percent Change	Average Saturday	Average Saturday	Percent Change	Average Sunday	Average Sunday	Percent Change	Total Monthly	Total Monthly	Percent Change
	Mar-25	Feb-25	MOM	Mar-25	Feb-25	MOM	Mar-25	Feb-25	MOM	Mar-25	Feb-25	MOM
Contracted Express Routes												
301-DADE MONROE EXPRESS	1,392	1,441	-3.4%	1,410	1,454	-3.0%	1,293	1,318	-1.9%	42,754	39,910	7.1%
302-CARD SOUND EXPRESS	119	167	-28.6%	149	166	-10.6%	109	113	-3.3%	3,794	4,461	-15.0%
Subtotal Contracted Express Routes	1,512	1,608	-6.0%	1,559	1,621	-3.8%	1,402	1,430	-2.0%	46,548	44,371	4.9%
Percentage of All Bus Routes	0.8%	0.8%		1.3%	1.3%		1.6%	1.6%		0.9%	0.9%	
Limited Stop Routes												
24-CORAL WAY LIMITED	2,345	2,365	-0.8%	1,691	1,630	3.7%	1,117	1,231	-9.2%	63,281	58,741	7.7%
38 TRANSITWAY MAX	5,880	6,291	-6.5%	5,070	5,353	-5.3%	3,695	3,873	-4.6%	167,312	162,722	2.8%
203 - BISCAYNE MAX	1,014	1,114	-9.0%							21,285	22,276	-4.4%
204 KILLIAN MAX	555	591	-6.2%							11,645	11,822	-1.5%
211 - FLAGLER MAX	1,584	1,740	-9.0%							33,263	34,798	-4.4%
241 TUTTLE LIMITED												
272 SUNSET MAX (*)	358	376	-4.8%							7,519	7,521	0.0%
277-7TH AVENUE MAX												
279 - 79 STREET MAX	740	876	-15.5%							15,549	17,529	-11.3%
287-SAGA BAY MAX	328	335	-2.2%							6,881	6,698	2.7%
288 KENDALL MAX	449	486	-7.7%							9,422	9,727	-3.1%
297-27th AVENUE ORANGE MAX												
Subtotal Limited Stop Routes	13,252	14,175	-6.5%	6,761	6,983	-3.2%	4,812	5,103	-5.7%	336,157	331,834	1.3%
Percentage of All Bus Routes	7.2%	7.3%		5.6%	5.7%		5.4%	5.8%		6.8%	7.0%	
Directly Operated Free Routes												
132 -TRI-RAIL DORAL SHUTTLE	46	55	-15.9%							963	1,090	-11.7%
500 - CUTLER BAY LOCAL	170	173	-2.0%	185	170	9.0%	85	86	-0.6%	4,914	4,484	9.6%
510 - SKYLAKE CIRCULATOR (*)	332	365	-9.1%	118	102	15.3%	120	105	14.0%	8,154	8,124	0.4%
Subtotal Free Directly Operated Routes	547	592	-7.6%	303	272	11.4%	205	191	7.5%	14,031	13,698	2.4%
Percentage of All Bus Routes	0.3%	0.3%		0.2%	0.2%		0.2%	0.2%		0.3%	0.3%	
Contractor-Operated Lifeline Routes												
GREEN HILLS SHUTTLE	8	7	16.9%							38	26	46.2%
KINGS CREEK SHUTTLE	10	10	-4.9%							39	41	-4.9%
MEEK / MARQUESS SHUTTLE	11	17	-35.3%							44	68	-35.3%
SIERRA LAKES SHUTTLE	22	24	-8.3%							88	96	-8.3%
ROBERT SHARP SHUTTLE	27	31	-12.3%							107	122	-12.3%
AHEPA SHUTTLE	22	19	15.8%							88	76	15.8%
FEDERATION GARDENS SHUTTLE				30	31	-3.3%				119	123	-3.3%
Subtotal Contractor-Operated Lifeline Routes	99	107	-7.6%	30	31	-3.3%				523	552	-5.3%
Percentage of All Bus Routes	0.1%	0.1%		0.0%	0.0%					0.0%	0.0%	
All Other (Regular) Routes	156,140	164,332	-5.0%	108,085	108,617	-0.5%	78,044	77,328	0.9%	4,209,584	4,030,408	4.4%
Percentage of All Bus Routes	85.0%	84.8%		89.0%	88.7%		88.2%	87.8%		85.8%	85.5%	
Total Bus System	183,802	193,763	-5.1%	121,477	122,488	-0.8%	88,446	88,114	0.4%	4,907,536	4,715,948	4.1%

BUS RIDERSHIP BY ROUTE SERVICE TYPE LINEUPS COMPARISON (MONTH-OVER-17 MONTH)

Boardings by Service Type and Route	Average Weekday	Average Weekday	Percent Change	Average Saturday	Average Saturday	Percent Change	Average Sunday	Average Sunday	Percent Change	Total Monthly	Total Monthly	Percent Change
	Mar-25	Oct-23	25 vs 23	Mar-25	Oct-23	25 vs 23	Mar-25	Oct-23	25 vs 23	Mar-25	Oct-23	25 vs 23
Directly Operated Express Routes												
34 TRANSITWAY EXPRESS	1,733	1,636	5.9%							36,397	36,002	1.1%
39 TRANSITWAY EXPRESS	844	742	13.7%							17,729	16,333	8.5%
95-EXPRESS GOLDEN GLADES	1,476	1,195	23.5%							31,004	26,295	17.9%
150-MIAMI BEACH AIRPORT EXPRESS	1,630	2,149	-24.1%	1,481	2,161	-31.5%	1,395	1,966	-29.1%	48,620	65,763	-26.1%
338 - WEEKEND EXPRESS				183	259	-29.4%	159	247	-35.7%	1,710	2,274	-24.8%
836 EXPRESS	309	247	25.3%							6,492	5,428	19.6%
837 EXPRESS	239	195	23.0%							5,028	4,281	17.4%
Subtotal Express Routes	6,233	6,165	1.1%	1,664	2,420	-31.2%	1,554	2,214	-29.8%	146,980	156,376	-6.0%
Percentage of All Bus Routes	3.4%	3.3%		1.4%	2.3%		1.8%	2.7%		3.0%	3.2%	
Contracted Routes - Local Service (*)												
2	2,100	2,977	-29.4%	1,040	1,605	-35.2%	913	1,214	-24.8%	53,873	77,976	-30.9%
15	649	178	265.5%	534	93	473.1%	497	53	838.5%	18,789	4,545	313.4%
29		516									11,342	
46 - LIBERTY CITY CONN.		22									477	
56	288	391	-26.4%	108						6,584	8,598	-23.4%
new 57	185			80						4,293		
70	278	161	72.5%	209			186			7,813	3,546	120.3%
72	894	670	33.4%	498	357	39.6%	415	259	60.0%	23,329	17,459	33.6%
82 - WESTCHESTER CIRC		61			38						1,488	
97	228	225	1.6%	167	163	2.2%	155	149	4.0%	6,397	6,337	0.9%
115		151			80			66			3,968	
152	356	1,051	-66.2%	246	375	-34.5%	176	331	-47.0%	9,572	26,285	-63.6%
155 - BISCAYNE GARDENS CIRC		45									985	
202 - LITTLE HAITI CONN		110			22			21			2,620	
211 OVERTOWN CIRCULATOR		71									1,567	
212-SWEETWATER CIRC		22									494	
217 - BUNCHE PARK CIRC		80									1,759	
254-BROWNSVILLE CIRC		5									105	
267-LUDLAM LIMITED		162									3,567	
286-NORTH POINTE CIRC		93			61						2,279	
344	153	76	102.0%	117						3,799	1,666	128.0%
401 - NORTH OWL	74	61	22.6%	77	61	27.3%	87	65	34.1%	2,379	1,899	25.3%
MetroLink NoMi West	314									6,602		
MetroLink North Miami	226									4,751		
MetroLink LeJeune	72									1,515		
MetroLink Killian Parkway	165									3,298		
MetroLink Opa-Locka	36									719		
Subtotal Contracted Reg. & Circ. Routes	6,019	7,125	-15.5%	3,075	2,854	7.8%	2,429	2,158	12.5%	153,713	178,962	-14.1%
Percentage of All Bus Routes	3.3%	3.8%		2.5%	2.7%		2.7%	2.7%		3.1%	3.6%	

- (1) Several express routes were suspended beginning at the end of Mar-20, due to the SARS-CoV-2 pandemic, while other routes had alignment and schedule modifications made to them, in an ongoing effort to optimize service delivery.
- (2) A second major round of changes took place with the 11/13/23 lineup known as the Better Bus Network, as listed at the start of this Metrobus section.

BUS RIDERSHIP BY ROUTE SERVICE TYPE LINEUPS COMPARISON (MONTH-OVER-17 MONTH)

Boardings by Service Type and Route	Average Weekday	Average Weekday	Percent Change	Average Saturday	Average Saturday	Percent Change	Average Sunday	Average Sunday	Percent Change	Total Monthly	Total Monthly	Percent Change
	Mar-25	Oct-23	25 vs 23	Mar-25	Oct-23	25 vs 23	Mar-25	Oct-23	25 vs 23	Mar-25	Oct-23	25 vs 23
Contracted Express Routes												
301-DADE MONROE EXPRESS	1,392	955	45.7%	1,410	885	59.4%	1,293	867	49.2%	42,754	28,889	48.0%
302-CARD SOUND EXPRESS	119	91	31.7%	149	94	58.1%	109	72	52.2%	3,794	2,728	39.1%
Subtotal Contracted Express Routes	1,512	1,046	44.5%	1,559	979	59.2%	1,402	938	49.4%	46,548	31,617	47.2%
Percentage of All Bus Routes	0.8%	0.6%		1.3%	0.9%		1.6%	1.2%		0.9%	0.6%	
Limited Stop Routes												
24-CORAL WAY LIMITED	2,345	2,195	6.8%	1,691	1,400	20.8%	1,117	1,108	0.8%	63,281	59,432	6.5%
38 TRANSITWAY MAX	5,880	5,714	2.9%	5,070	6,328	-19.9%	3,695	4,957	-25.5%	167,312	175,803	-4.8%
203 - BISCAYNE MAX	1,014	3,666	-72.4%							21,285	80,650	-73.6%
204 KILLIAN MAX	555	620	-10.5%							11,645	13,632	-14.6%
211 - FLAGLER MAX	1,584	3,824	-58.6%							33,263	84,135	-60.5%
241 TUTTLE LIMITED		348			222			187		9,471	9,471	
272 SUNSET MAX (*)	358	428	-16.4%							7,519	9,423	-20.2%
277-7TH AVENUE MAX		879								19,345	19,345	
279 - 79 STREET MAX	740	469	57.9%							15,549	10,318	50.7%
287-SAGA BAY MAX	328	341	-3.9%							6,881	7,499	-8.2%
288 KENDALL MAX	449	372	20.5%							9,422	8,189	15.1%
297-27th AVENUE ORANGE MAX		1,229								27,047	27,047	
Subtotal Limited Stop Routes	13,252	20,086	-34.0%	6,761	7,950	-15.0%	4,812	6,252	-23.0%	336,157	504,944	-33.4%
Percentage of All Bus Routes	7.2%	10.8%		5.6%	7.4%		5.4%	7.7%		6.8%	10.3%	
Directly Operated Free Routes												
132 -TRI-RAIL DORAL SHUTTLE	46	37	25.5%							963	804	19.8%
500 - CUTLER BAY LOCAL	170	176	-3.5%	185	152	21.9%	85	86	-1.4%	4,914	4,907	0.1%
510 - SKYLAKE CIRCULATOR (*)	332	471	-29.6%	118	217	-45.9%	120	194	-38.2%	8,154	12,211	-33.2%
Subtotal Free Directly Operated Routes	547	684	-20.0%	303	369	-18.0%	205	280	-26.9%	14,031	17,922	-21.7%
Percentage of All Bus Routes	0.3%	0.4%		0.2%	0.3%		0.2%	0.3%		0.3%	0.4%	
Contractor-Operated Lifeline Routes												
GREEN HILLS SHUTTLE	8	5	46.2%							38	26	46.2%
KINGS CREEK SHUTTLE	10	14	-29.1%							39	55	-29.1%
MEEK / MARQUESS SHUTTLE	11									44		
SIERRA LAKES SHUTTLE	22	16	41.9%							88	62	41.9%
ROBERT SHARP SHUTTLE	27	23	16.3%							107	92	16.3%
AHEPA SHUTTLE	22	18	23.9%							88	71	23.9%
FEDERATION GARDENS SHUTTLE				30	20	48.8%				119	80	48.8%
Subtotal Contractor-Operated Lifeline Routes	99	75	31.8%	30	20	48.8%				523	386	35.5%
Percentage of All Bus Routes	0.1%	0.0%		0.0%	0.0%					0.0%	0.0%	
All Other (Regular) Routes	156,140	150,140	4.0%	108,085	92,739	16.5%	78,044	69,584	12.2%	4,209,584	4,021,944	4.7%
Percentage of All Bus Routes	85.0%	81.0%		89.0%	86.4%		88.2%	85.5%		85.8%	81.9%	
Total Bus System	183,802	185,320	-0.8%	121,477	107,331	13.2%	88,446	81,427	8.6%	4,907,536	4,912,151	-0.1%

Bus Routes as Ranked by Percentage of Average Weekday Ridership March 2025

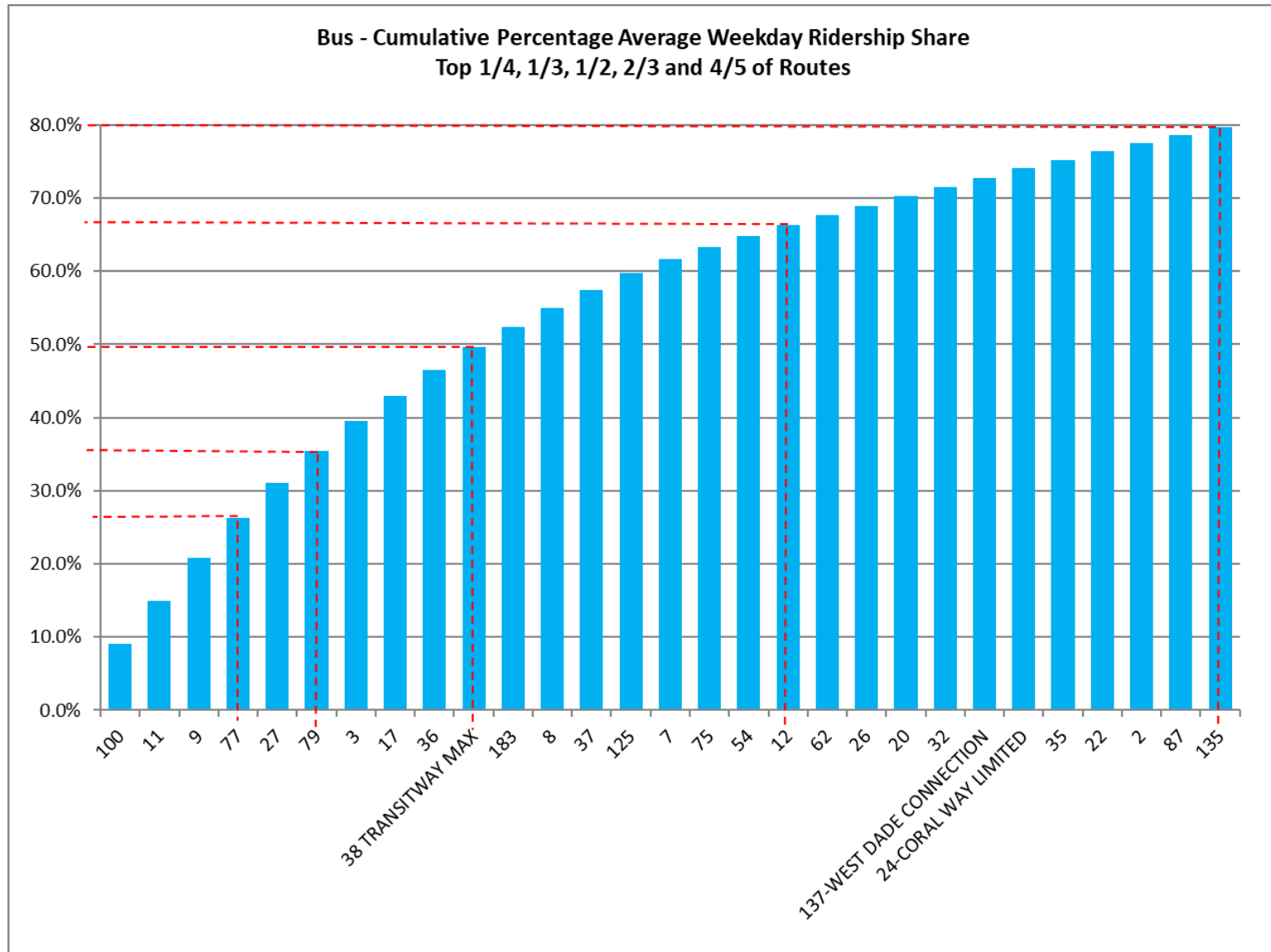
Rank	Route	Average Weekday	Percent Share	Cumul Pct Share	Rank	Route	Average Weekday	Percent Share	Cumul Pct Share	Rank	Route	Average Weekday	Percent Share	Cumul Pct Share
1	100	16,651	9.1%	9.1%	32	88	1,780	1.0%	82.8%	63	837	239	0.1%	99.0%
2	11	10,767	5.9%	14.9%	33	new 103	1,760	1.0%	83.8%	64	97	228	0.1%	99.1%
3	9	10,733	5.8%	20.8%	34	34	1,733	0.9%	84.7%	65	8001	226	0.1%	99.3%
4	77	10,235	5.6%	26.3%	35	21	1,726	0.9%	85.6%	66	new 57	185	0.1%	99.4%
5	27	8,613	4.7%	31.0%	36	40	1,711	0.9%	86.6%	67	500	170	0.1%	99.5%
6	79	8,075	4.4%	35.4%	37	150	1,630	0.9%	87.5%	68	8003	165	0.1%	99.5%
7	3	7,612	4.1%	39.5%	38	new 211	1,584	0.9%	88.3%	69	344	153	0.1%	99.6%
8	17	6,361	3.5%	43.0%	39	208	1,571	0.9%	89.2%	70	136	150	0.1%	99.7%
9	36	6,345	3.5%	46.5%	40	207	1,499	0.8%	90.0%	71	302	119	0.1%	99.8%
10	38	5,880	3.2%	49.7%	41	52	1,489	0.8%	90.8%	72	400	86	0.0%	99.8%
11	183	4,886	2.7%	52.3%	42	95	1,476	0.8%	91.6%	73	401	74	0.0%	99.9%
12	8	4,772	2.6%	54.9%	43	301	1,392	0.8%	92.4%	74	8002	72	0.0%	99.9%
13	37	4,663	2.5%	57.4%	44	73	1,264	0.7%	93.0%	75	132	46	0.0%	99.9%
14	125	4,266	2.3%	59.8%	45	14	1,189	0.6%	93.7%	76	8005	36	0.0%	99.9%
15	7	3,405	1.9%	61.6%	46	104	1,087	0.6%	94.3%	77	RS	27	0.0%	100.0%
16	75	3,024	1.6%	63.3%	47	203	1,014	0.6%	94.8%	78	AS	22	0.0%	100.0%
17	54	2,765	1.5%	64.8%	48	72	894	0.5%	95.3%	79	SL	22	0.0%	100.0%
18	12	2,746	1.5%	66.3%	49	39	844	0.5%	95.8%	80	M/M	11	0.0%	100.0%
19	62	2,461	1.3%	67.6%	50	new 101	752	0.4%	96.2%	81	KC	10	0.0%	100.0%
20	26	2,387	1.3%	68.9%	51	279	740	0.4%	96.6%	82	GH	8	0.0%	100.0%
21	20	2,384	1.3%	70.2%	52	15	649	0.4%	96.9%					
22	32	2,369	1.3%	71.5%	53	204	555	0.3%	97.2%					
23	137	2,360	1.3%	72.8%	54	288	449	0.2%	97.5%					
24	24	2,345	1.3%	74.0%	55	272	358	0.2%	97.7%					
25	35	2,194	1.2%	75.2%	56	152	356	0.2%	97.9%					
26	22	2,139	1.2%	76.4%	57	510	332	0.2%	98.1%					
27	2	2,100	1.1%	77.5%	58	287	328	0.2%	98.2%					
28	87	2,014	1.1%	78.6%	59	8000	314	0.2%	98.4%					
29	135	1,980	1.1%	79.7%	60	836	309	0.2%	98.6%					
30	107	1,961	1.1%	80.8%	61	56	288	0.2%	98.7%					
31	199	1,910	1.0%	81.8%	62	70	278	0.2%	98.9%					
										entirely contracted in Mar-25				
										Total Boardings	183,802	100.00%		

(1) Average weekday ridership rounded to the nearest unit.

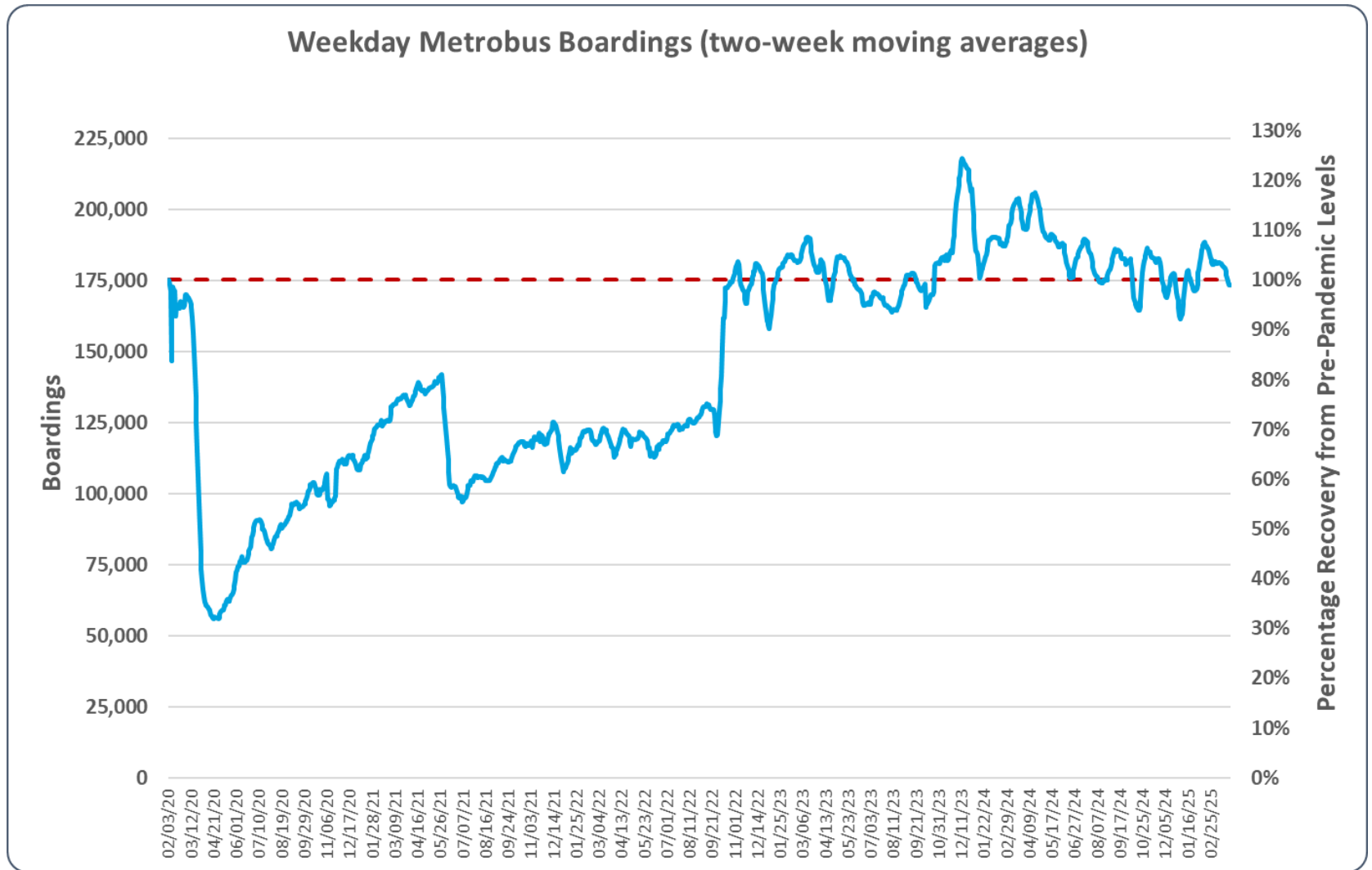
(2) Includes the five Lifeline Shuttles that operate on weekdays: Ahepa (AS), Green Hills (GH), Kings Creek (KC), Meek/Marquess (M/M), Robert Sharp (RS) and Sierra Lakes (SL).

(3) Routes 8000, 8001, 8002, 8003 and 8005 refer to the five Better Bus Network MetroLink contracted supplemental routes, launched in July and August 2024 and still running: MetroLink NoMi West, MetroLink North Miami, MetroLink LeJeune, MetroLink Killian Parkway, and MetroLink Opa-Locka, respectively.

METROBUS CUMULATIVE PERCENTAGE RIDERSHIP SHARE – BY ROUTE



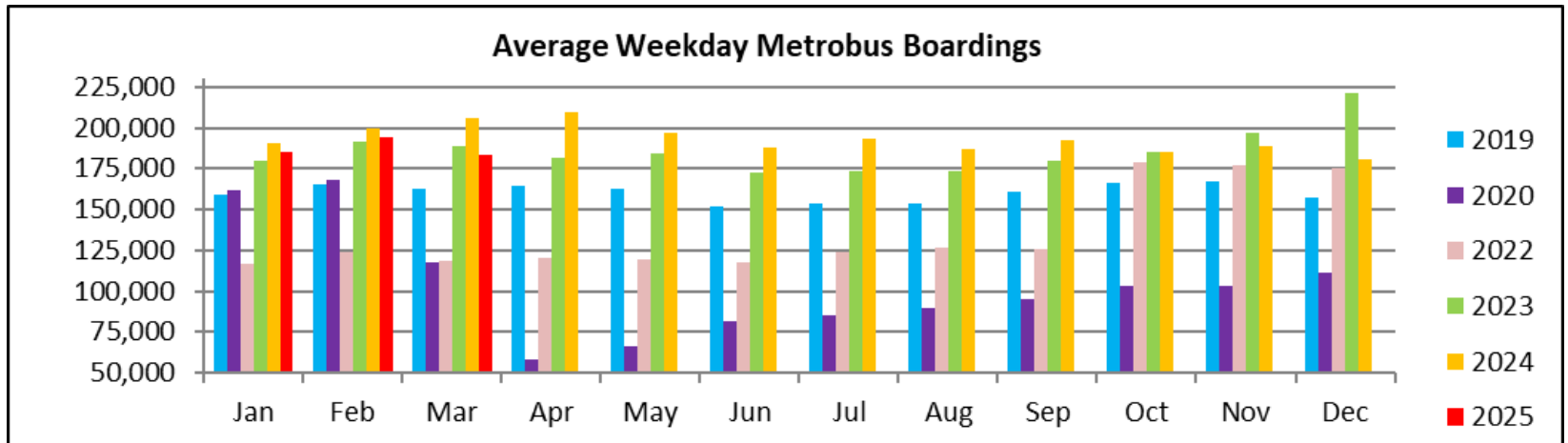
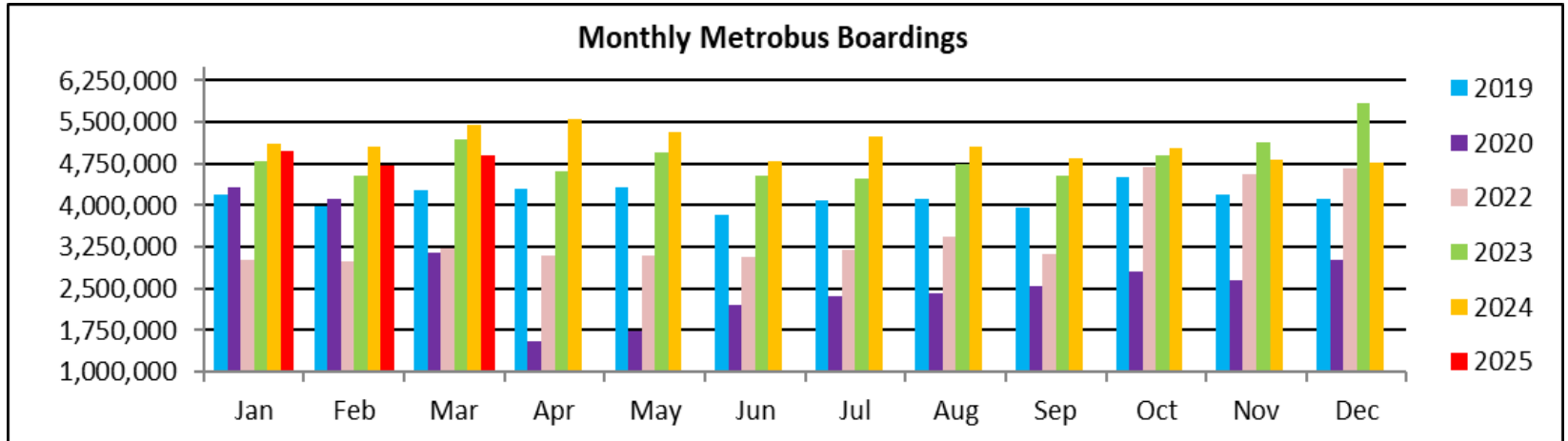
METROBUS ESTIMATED WEEKDAY RIDERSHIP SINCE 02/01/20 (TWO-WEEK MOVING AVERAGES)



- (1) The red dotted line represents the pre-pandemic benchmark month (Feb-20) local maximum.
- (2) The pronounced dip in June 2021 is due to resumption of fares at the start of recovery from the SARS-CoV-2 pandemic; the pronounced increase in October 2022 is due to the switchover to automatic passenger counter sampling-based estimates for metrobus ridership; the isolated peak around December 2023 is due to the free fares marking the launch of the Better Bus Network.

March 2025

TOTAL MONTHLY AND AVERAGE WEEKDAY RIDERSHIP YEAR OVER YEAR COMPARISON CHARTS – METROBUS



**“TOP 10 / BOTTOM 10” BUS ROUTES AVERAGE WEEKDAY RIDERSHIP PERFORMANCE
YEAR OVER YEAR COMPARISON**

Route	Mar-25	Mar-24	Absolute Delta	Percent Delta
301-DADE MONROE EXPRESS	1,392	1,054	338	32.1%
32	2,369	2,034	335	16.5%
15	649	441	208	47.3%
75	3,024	2,932	92	3.1%
95-EXPRESS GOLDEN GLADES	1,476	1,397	79	5.6%
837 EXPRESS	239	191	49	25.6%
39 TRANSITWAY EXPRESS	844	801	43	5.4%
344	153	113	40	35.3%
97	228	203	25	12.4%
72	894	875	19	2.1%
20	2,384	4,520	-2,136	-47.3%
79	8,075	9,974	-1,899	-19.0%
100	16,651	18,376	-1,725	-9.4%
77	10,235	11,737	-1,502	-12.8%
38 TRANSITWAY MAX	5,880	7,198	-1,318	-18.3%
3	7,612	8,857	-1,245	-14.1%
11	10,767	11,928	-1,162	-9.7%
7	3,405	4,501	-1,097	-24.4%
27	8,613	9,686	-1,073	-11.1%
9	10,733	11,530	-798	-6.9%

(*) Averages rounded to the nearest boarding, data as estimated from automatic passenger counter (APC) system; Lifeline shuttles excluded.

“TOP 10 / BOTTOM 10” BUS ROUTES SETS AVERAGE WEEKDAY RIDERSHIP PERFORMANCE YEAR OVER YEAR COMPARISON

Route Set (*), (1), (2)	Mar-25	Mar-24	Absolute Delta	Percent Delta	routes included in set
301	1,392	1,054	338	32.1%	301
15	649	441	208	47.3%	15
{ 95 }	1,476	1,397	79	5.6%	95, 175, 195, 196, 295, 296
837	239	191	49	25.6%	837
39	844	801	43	5.4%	39
97	228	203	25	12.4%	97
72	894	875	19	2.1%	72
302	119	105	14	13.4%	302
401	74	65	9	14.4%	401
{ lifeline }	99	91	8	9.0%	RS, SL, KC, RS, AS, AH
{ 279 }	8,815	10,944	-2,129	-19.5%	79, 112, 279
{ 20 }	4,754	6,555	-1,801	-27.5%	20, 32, 115
{ 100 }	16,651	18,376	-1,725	-9.4%	100, 105, 119, 120
{ 77 }	10,235	11,737	-1,502	-12.8%	77, 277
{ 3 & 203 }	8,625	10,109	-1,483	-14.7%	3, 93, 203
{ new 211 }	11,060	12,397	-1,337	-10.8%	8, 24, 51, 82, 137, new 211
{ 38 }	6,033	7,311	-1,278	-17.5%	31, 38, 344
{ 17 & 22 & 75 }	11,523	12,797	-1,274	-10.0%	17, 22, 75, 108, 217
{ 11 }	10,767	11,928	-1,162	-9.7%	11, 212
7	3,405	4,501	-1,097	-24.4%	7

(*) Averages rounded to the nearest boarding, data as estimated from automatic passenger counter (APC) system; Lifeline shuttles excluded.

(1) The route sets, denoted by brackets, include the new 11/13/2023 lineup's Better Bus Network route designations, as well as older routes present for the first part of the month and previous months and years, then either renamed, absorbed, or eliminated. The sets were defined to enable reasonably fair comparisons between pre- and post-BBN timeframes, to the extent possible and practical, given the complexity of the changes for some of the routes and sets. The definitions were based on information from the DTPW website, and subject to future adjustments, if necessary.

(2) The adjective "new" in front of some new Better Bus Network-generated (recycled) route numbers was added to help distinguish those routes from older but different routes with the same number present in previous months or years.

**“TOP 10 / BOTTOM 10” BUS ROUTES SETS AVERAGE WEEKDAY RIDERSHIP PERFORMANCE
MONTH OVER 17-MONTH PRIOR COMPARISON**

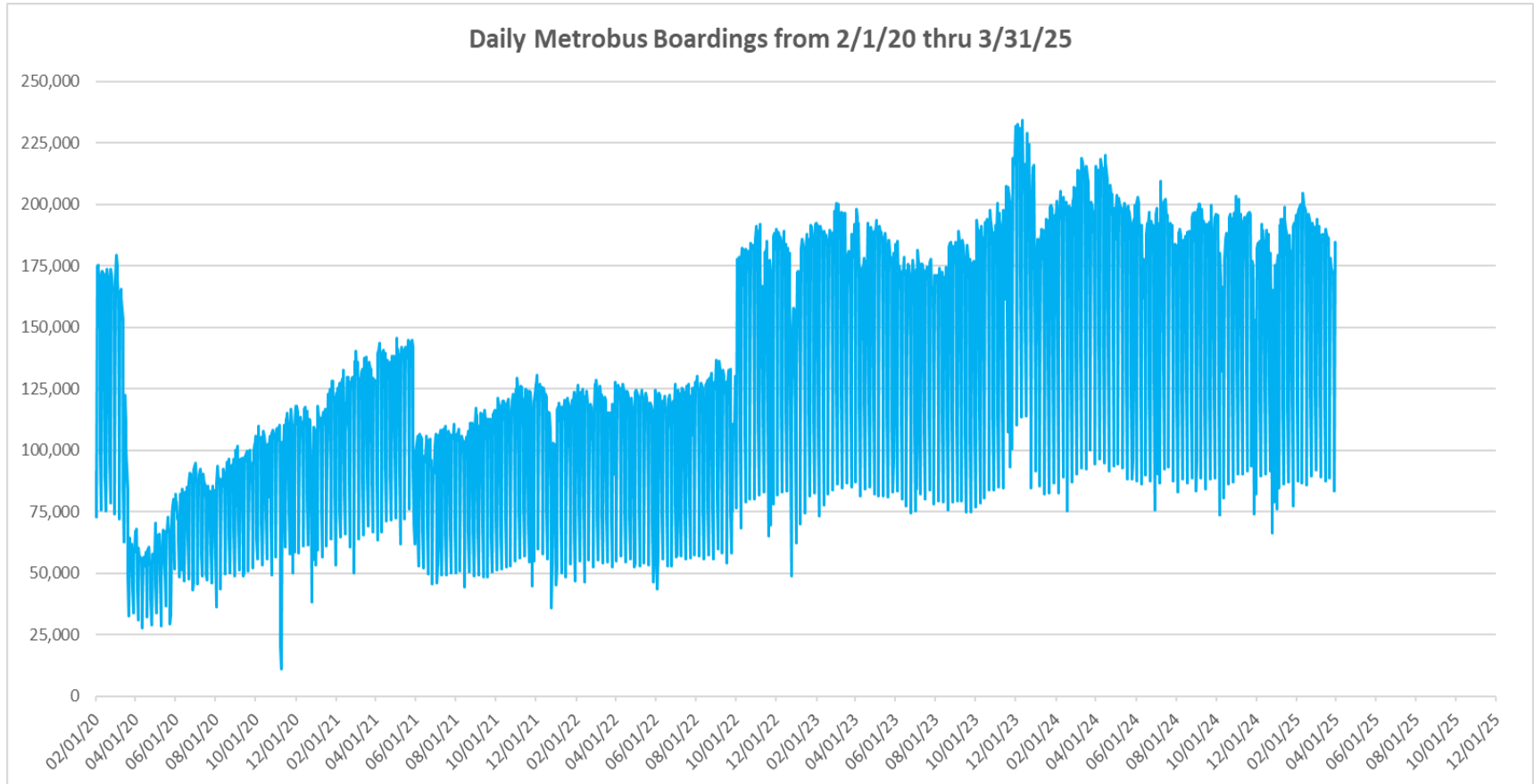
Route Set (*), (1), (2)	Mar-25	Oct-23	Absolute Delta	Percent Delta	routes included in set
{ 20 }	4,754	2,850	1,904	66.8%	20, 32, 115
{ 11 }	10,767	9,644	1,123	11.6%	11, 212
{ 36 }	6,345	5,600	745	13.3%	36, 110
{ 17 & 22 & 75 }	11,523	10,796	727	6.7%	17, 22, 75, 108, 217
26	2,387	1,877	510	27.2%	26
15	649	178	471	265.5%	15
301	1,392	955	437	45.7%	301
{ 125 }	4,266	3,906	360	9.2%	19, 107, 125
{ 95 }	1,476	1,195	281	23.5%	95, 175, 195, 196, 295, 296
{ 27 }	8,613	8,339	274	3.3%	27, 297
{ new 211 }	11,060	12,849	-1,789	-13.9%	8, 24, 51, 82, 137, new 211
{ 73 & 183 }	6,150	7,890	-1,740	-22.1%	57, 73, 183, 238, 267, 286
{ 2 }	2,100	3,048	-947	-31.1%	2, 211
{ 37 & 54 }	7,428	8,082	-654	-8.1%	29, 37, 42, 54, 254
88	1,780	2,419	-639	-26.4%	88
40	1,711	2,344	-633	-27.0%	40
7	3,405	4,021	-616	-15.3%	7
{ 77 }	10,235	10,838	-604	-5.6%	77, 277
{ 52 }	1,844	2,442	-597	-24.5%	52, 152, 252
150	1,630	2,149	-519	-24.1%	150

(*) Averages rounded to the nearest boarding, data as estimated from automatic passenger counter (APC) system; Lifeline shuttles excluded.

(1) The route sets, denoted by brackets, include the new 11/13/2023 lineup's Better Bus Network route designations, as well as older routes present for the first part of the month and previous months and years, then either renamed, absorbed, or eliminated. The sets were defined to enable reasonably fair comparisons between pre- and post-BBN timeframes, to the extent possible and practical, given the complexity of the changes for some of the routes and sets. The definitions were based on information from the DTPW website, and subject to future adjustments, if necessary.

(2) The adjective "new" in front of some new Better Bus Network-generated (recycled) route numbers was added to help distinguish those routes from older but different routes with the same number present in previous months or years.

DAILY METROBUS RIDERSHIP SINCE FEBRUARY 1, 2020



- (1) There was no Metrobus, Metrorail and Metromover service on 5/31/20, as a safety precaution, and no service for any of the four modes on 9/28/22, as a result of Hurricane Ian.
- (2) The dip at the start of the second week of Nov-20 is due to Hurricane Eta.
- (3) Daily variations from Oct-22 onward are a representation estimated from reports made available by the Bus APC data vendor; the finalized data is based on statistical sampling.
- (4) The reduction seen beginning 6/1/21 is partly due to the resumption of fares and partly the result of resuming reporting Cubic farebox data rather than bus APC counts; the jump seen at the very start of Oct-22 is due to the switch to APC bus ridership counts reporting beginning 10/1/22; the pronounced peak in Dec-23 is attributable to the Better Bus Network launch period and attendant free fares.
- (5) Periodic (weekly) variations are prominent, since weekday ridership is almost always significantly higher than weekend or holiday ridership.

METROBUS PARKING PATRONAGE SUMMARY

March 2025

PARK-RIDE LOT	ACTUAL AVAILABLE SPACES	ACTUAL OCCUPANCY	PERCENT OCCUPANCY
Transitway / SW 152nd St	200	124	62%
Transitway / SW 168th St (*)	149	0	0%
Transitway / SW 200th Street (**)	100	0	0%
Transitway / SW 112 Ave (Target)	450	193	43%
Transitway / SW 244th St	95	74	78%
Transitway / SW 296th St	139	28	20%
Transitway / SW 344th St	248	205	83%
Coral Reef Drive 117/ Turnpike	95	90	95%
Golden Glades Facility	2,150	397	18%
Hammocks Town Center (SW 152 Ave / SW 104 St)	50	21	42%
Kendall Dr./SW 127th Ave	161	17	11%
West Kendall Transit Term (Kendall Dr / SW162 Ave)	40	13	33%
NW 7th Avenue Transit Village (NW 7 Ave / NW 62 St)	25	20	80%
Miami Gardens Dr. / NW 73rd Ave	136	1	1%
Dolphin Station	348	78	22%
Tamiami Station (eff 11-2022)	442	81	18%
I-75 / Miami Gardens Dr (***)	298	0	0%
TOTAL	5,126	1,342	26%

(*) Closed for construction beginning February 2022

(**) Closed for construction beginning February 2025

(***) Route 175 suspended 3/27/2020, discontinued with Better Bus Network 11/13/23

March 2025

Metrorail



March 2025

METRORAIL AVERAGE WEEKDAY BOARDINGS BY STATION (†)

Weekdays	Average Weekday	Average Weekday	Percent Change	Average Weekday	Percent Change	Average Weekday	Percent Change	Average Weekday	Percent Change
STATIONS	Mar-25	Mar-24	YOY	Feb-20	Current vs Feb-20	Feb-25	MOM	Mar-19	YO6Y
ALLAPATTAH	1,685	1,716	-1.8%	1,942	-13.2%	1,701	-0.9%	1,782	-5.4%
BRICKELL	5,629	5,651	-0.4%	6,529	-13.8%	5,814	-3.2%	6,136	-8.3%
BROWNSVILLE	535	536	-0.2%	862	-37.9%	573	-6.6%	790	-32.3%
UHEALTH JACKSON	4,914	4,187	17.4%	6,143	-20.0%	4,514	8.9%	5,656	-13.1%
COCONUT GROVE		1,786		1,795				1,625	
CULMER	572	958	-40.3%	1,392	-58.9%	768	-25.5%	1,182	-51.6%
DADELAND NORTH	4,987	4,196	18.8%	5,926	-15.8%	4,929	1.2%	5,729	-13.0%
DADELAND SOUTH	4,641	4,795	-3.2%	7,150	-35.1%	4,706	-1.4%	6,661	-30.3%
DOUGLAS ROAD	4,113	3,310	24.3%	3,624	13.5%	4,276	-3.8%	3,502	17.4%
DR. MARTIN LUTHER KING, JR.	926	722	28.2%	1,157	-19.9%	940	-1.5%	1,070	-13.5%
EARLINGTON HEIGHTS	1,423	1,483	-4.0%	1,662	-14.4%	1,461	-2.6%	1,500	-5.1%
GOVERNMENT CENTER	7,399	7,039	5.1%	10,557	-29.9%	7,166	3.2%	9,827	-24.7%
HIALEAH	1,269	1,285	-1.3%	1,253	1.3%	1,280	-0.9%	1,260	0.7%
MIAMI INTERNATIONAL AIRPORT	1,261	1,336	-5.6%	1,711	-26.3%	1,343	-6.1%	1,637	-22.9%
NORTHSIDE	1,064	1,380	-22.9%	1,476	-27.9%	1,096	-2.9%	1,353	-21.4%
OKEECHOBEE	1,021	1,011	1.1%	1,164	-12.3%	1,051	-2.9%	1,149	-11.1%
OVERTOWN / ARENA	2,246	1,942	15.7%	2,274	-1.2%	2,248	-0.1%	2,139	5.0%
PALMETTO	1,456	1,214	19.9%	1,543	-5.7%	1,422	2.4%	1,459	-0.2%
SANTA CLARA	846	796	6.3%	812	4.2%	871	-2.9%	754	12.1%
SOUTH MIAMI	2,311	2,218	4.2%	3,015	-23.3%	2,394	-3.4%	2,832	-18.4%
TRI-RAIL	1,115	1,205	-7.5%	1,207	-7.6%	1,071	4.1%	1,182	-5.7%
UNIVERSITY	2,337	2,067	13.1%	2,784	-16.1%	2,684	-12.9%	2,248	4.0%
VIZCAYA	1,737	1,276	36.2%	1,390	25.0%	1,781	-2.5%	1,313	32.3%
TOTAL	53,488	52,107	2.6%	67,367	-20.6%	54,087	-1.1%	62,786	-14.8%

(†) In this table and those which follow, "YOY" stands for "year-over-year", "MOM" for "month-over-month" and, e.g., "YO6Y" for "year over six years", i.e., current month vs 12 months prior, one month prior, and 72 months prior, respectively. The Feb-20 numbers serve as a strong pre-pandemic benchmark.

(*) Coconut Grove Station was closed for renovations during the entire month.

METRORAIL AVERAGE SATURDAY BOARDINGS BY STATION

Saturdays	Average Saturday	Average Saturday	Percent Change	Average Saturday	Percent Change	Average Saturday	Percent Change	Average Saturday	Percent Change
STATIONS	Mar-25	Mar-24	YOY	Feb-20	Current vs Feb-20	Feb-25	MOM	Mar-19	YO6Y
ALLAPATTAH	935	898	4.2%	1,051	-11.0%	894	4.6%	1,031	-9.3%
BRICKELL	2,743	2,698	1.7%	2,811	-2.4%	2,801	-2.1%	2,861	-4.1%
BROWNSVILLE	311	302	3.1%	520	-40.1%	313	-0.6%	522	-40.4%
UHEALTH JACKSON	822	684	20.3%	959	-14.3%	710	15.8%	979	-16.0%
COCONUT GROVE		973		928				879	
CULMER	299	456	-34.4%	721	-58.5%	400	-25.2%	663	-54.9%
DADELAND NORTH	1,894	1,513	25.2%	1,994	-5.0%	1,622	16.8%	2,042	-7.3%
DADELAND SOUTH	1,911	1,973	-3.2%	2,625	-27.2%	1,830	4.4%	2,590	-26.2%
DOUGLAS ROAD	1,991	1,489	33.7%	1,319	50.9%	1,881	5.8%	1,381	44.1%
DR. MARTIN LUTHER KING, JR.	528	430	22.6%	625	-15.5%	562	-6.0%	624	-15.4%
EARLINGTON HEIGHTS	807	837	-3.6%	935	-13.7%	790	2.2%	892	-9.5%
GOVERNMENT CENTER	3,792	3,309	14.6%	4,262	-11.0%	2,894	31.0%	3,964	-4.3%
HIALEAH	587	616	-4.7%	583	0.8%	609	-3.6%	609	-3.6%
MIAMI INTERNATIONAL AIRPORT	954	975	-2.2%	1,330	-28.3%	947	0.7%	1,317	-27.6%
NORTHSIDE	626	791	-21.0%	878	-28.7%	634	-1.3%	898	-30.3%
OKEECHOBEE	397	435	-8.7%	408	-2.8%	422	-5.9%	433	-8.4%
OVERTOWN / ARENA	922	677	36.2%	678	36.0%	836	10.3%	620	48.6%
PALMETTO	470	411	14.5%	458	2.7%	419	12.3%	436	7.7%
SANTA CLARA	398	378	5.2%	422	-5.6%	403	-1.2%	416	-4.2%
SOUTH MIAMI	1,086	1,051	3.3%	1,256	-13.5%	1,102	-1.4%	1,330	-18.3%
TRI-RAIL	573	584	-1.9%	614	-6.7%	498	15.1%	579	-1.1%
UNIVERSITY	961	855	12.5%	714	34.6%	869	10.6%	697	37.9%
VIZCAYA	834	609	37.0%	622	34.1%	786	6.1%	990	-15.8%
TOTAL	23,840	22,943	3.9%	26,714	-10.8%	22,220	7.3%	26,752	-10.9%

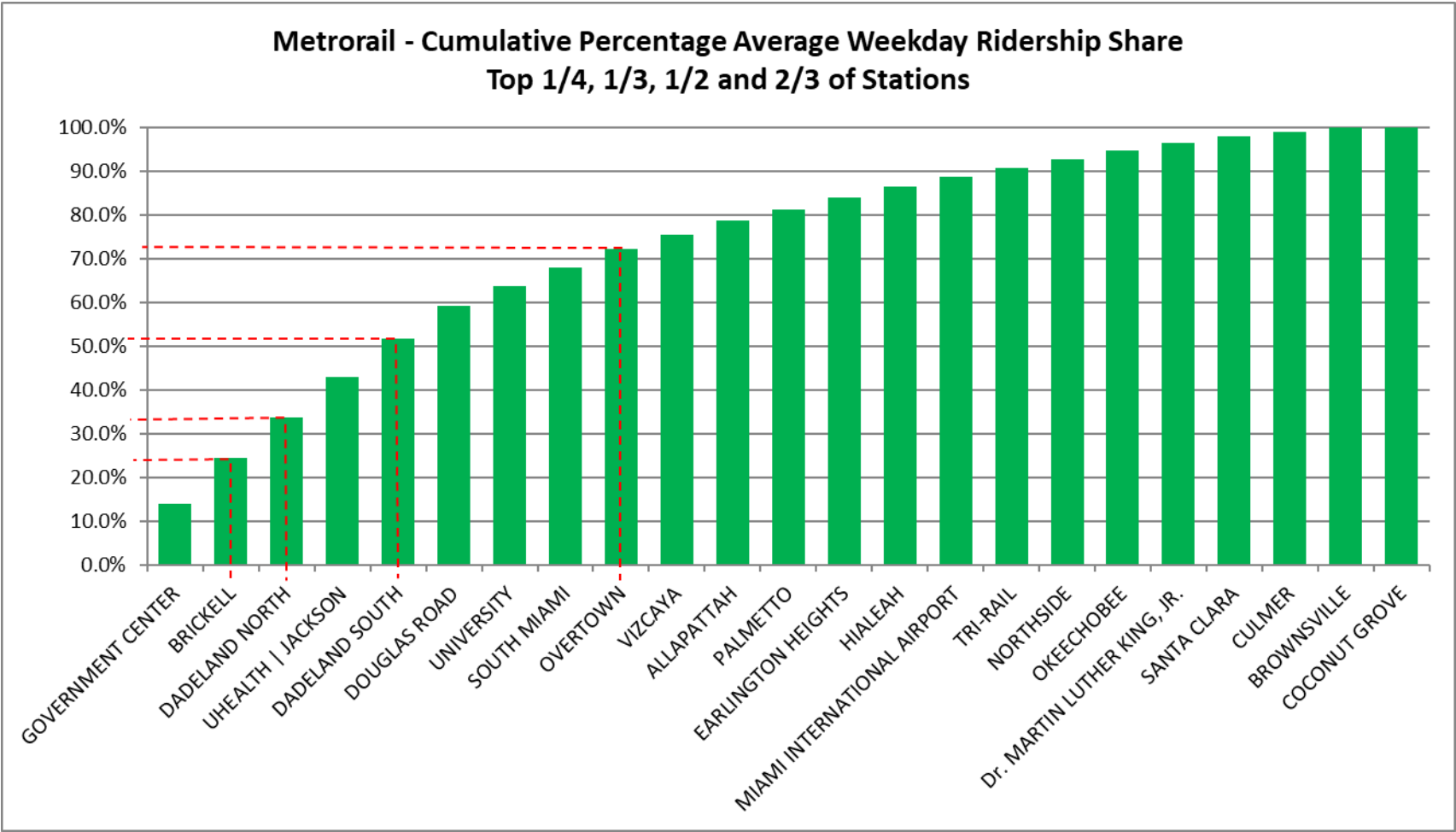
METRORAIL AVERAGE SUNDAY BOARDINGS BY STATION

Sundays	Average Sunday	Average Sunday	Percent Change	Average Sunday	Percent Change	Average Sunday	Percent Change	Average Sunday	Percent Change
STATIONS	Mar-25	Mar-24	YOY	Feb-20	Current vs Feb-20	Feb-25	MOM	Mar-19	YO6Y
ALLAPATTAH	644	647	-0.5%	791	-18.6%	659	-2.2%	739	-12.9%
BRICKELL	2,065	2,144	-3.7%	2,379	-13.2%	2,299	-10.2%	2,237	-7.7%
BROWNSVILLE	229	227	1.0%	406	-43.6%	236	-3.1%	402	-43.1%
UHEALTH JACKSON	610	525	16.3%	791	-22.9%	548	11.5%	760	-19.7%
COCONUT GROVE		755		838				703	
CULMER	252	354	-28.8%	616	-59.1%	321	-21.4%	546	-53.9%
DADELAND NORTH	1,299	1,066	21.8%	1,685	-22.9%	1,300	0.0%	1,452	-10.5%
DADELAND SOUTH	1,437	1,576	-8.8%	2,210	-35.0%	1,403	2.4%	1,958	-26.6%
DOUGLAS ROAD	1,354	1,094	23.8%	1,090	24.3%	1,440	-5.9%	1,012	33.8%
DR. MARTIN LUTHER KING, JR.	409	326	25.4%	506	-19.2%	403	1.6%	438	-6.6%
EARLINGTON HEIGHTS	580	623	-6.9%	799	-27.5%	617	-6.0%	741	-21.8%
GOVERNMENT CENTER	3,556	3,628	-2.0%	4,044	-12.1%	2,905	22.4%	2,922	21.7%
HIALEAH	428	438	-2.4%	472	-9.3%	432	-1.0%	463	-7.7%
MIAMI INTERNATIONAL AIRPORT	952	990	-3.9%	1,343	-29.1%	966	-1.5%	1,249	-23.8%
NORTHSIDE	375	626	-40.1%	653	-42.6%	502	-25.3%	664	-43.5%
OKEECHOBEE	269	292	-7.6%	273	-1.4%	292	-7.8%	262	2.7%
OVERTOWN / ARENA	739	597	23.8%	544	35.7%	751	-1.6%	523	41.2%
PALMETTO	280	261	7.4%	336	-16.7%	292	-4.0%	280	-0.1%
SANTA CLARA	282	255	10.6%	280	1.0%	286	-1.2%	257	9.9%
SOUTH MIAMI	766	762	0.6%	987	-22.3%	822	-6.8%	897	-14.5%
TRI-RAIL	433	442	-2.2%	528	-18.0%	399	8.6%	502	-13.8%
UNIVERSITY	764	695	10.0%	608	25.6%	763	0.2%	495	54.3%
VIZCAYA	608	454	34.0%	524	15.9%	708	-14.2%	1,011	-39.9%
TOTAL	18,331	18,776	-2.4%	22,701	-19.3%	18,341	-0.1%	20,515	-10.6%

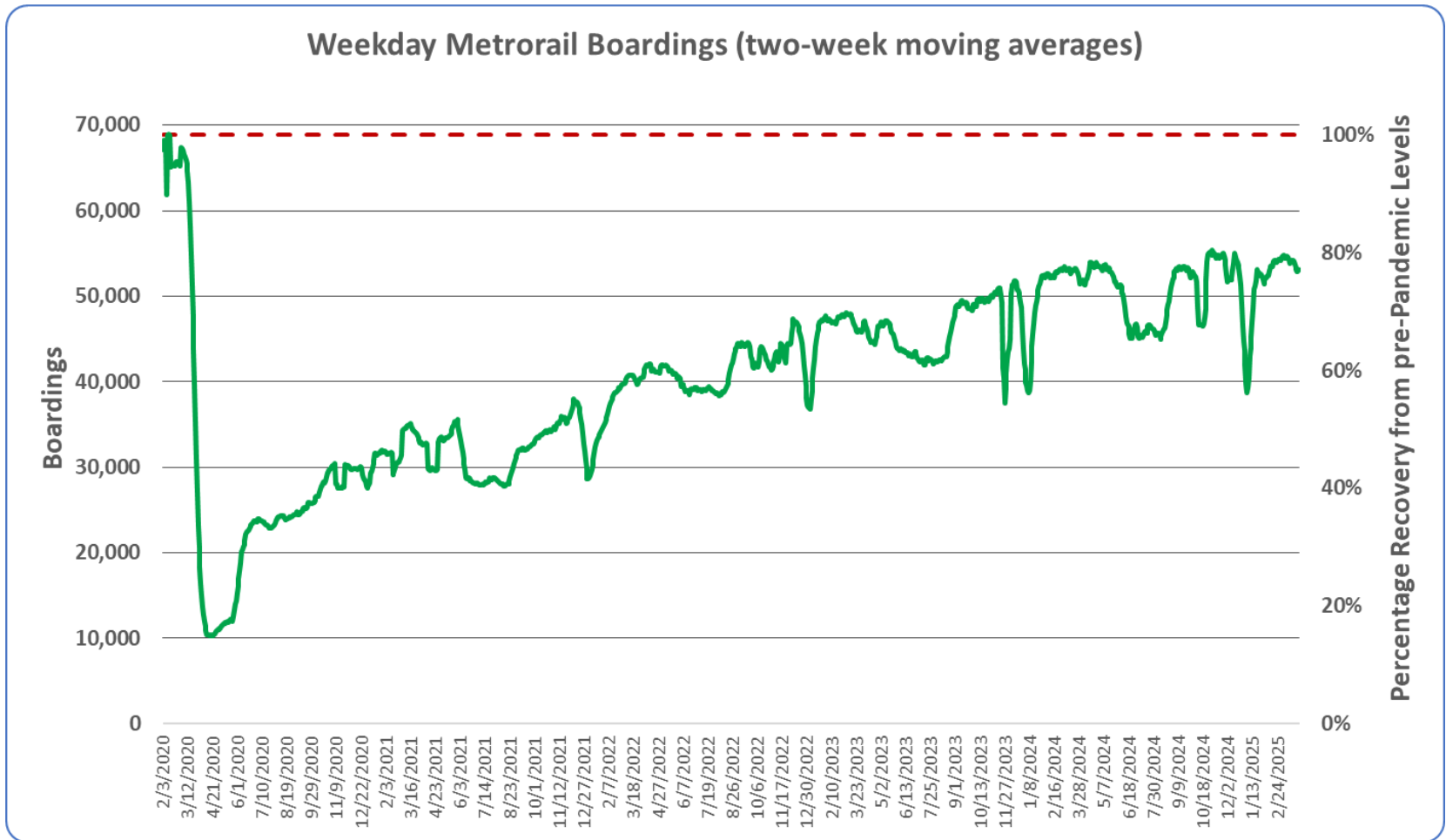
METRORAIL TOTAL MONTHLY BOARDINGS BY STATION

Monthly Totals	Total Month	Total Month	Percent Change	Total Month	Percent Change	Total Month	Percent Change	Total Month	Percent Change
STATIONS	Mar-25	Mar-24	YOY	Feb-20	Current vs Feb-20	Feb-25	MOM	Mar-19	YO6Y
ALLAPATTAH	43,281	43,769	-1.1%	46,868	-7.7%	39,827	8.7%	46,269	-6.5%
BRICKELL	142,251	142,883	-0.4%	152,259	-6.6%	134,948	5.4%	154,349	-7.8%
BROWNSVILLE	13,931	13,890	0.3%	21,285	-34.6%	13,558	2.8%	21,199	-34.3%
UHEALTH JACKSON	110,359	93,970	17.4%	128,921	-14.4%	94,168	17.2%	127,468	-13.4%
COCONUT GROVE		46,137		43,580				42,037	
CULMER	14,760	24,161	-38.9%	33,497	-55.9%	17,906	-17.6%	30,862	-52.2%
DADELAND NORTH	120,689	101,018	19.5%	132,894	-9.2%	108,422	11.3%	137,782	-12.4%
DADELAND SOUTH	114,204	118,446	-3.6%	162,416	-29.7%	105,456	8.3%	162,630	-29.8%
DOUGLAS ROAD	103,095	82,420	25.1%	82,141	25.5%	97,563	5.7%	85,517	20.6%
DR. MARTIN LUTHER KING, JR.	24,127	18,945	27.4%	27,980	-13.8%	22,417	7.6%	27,781	-13.2%
EARLINGTON HEIGHTS	36,811	38,433	-4.2%	40,697	-9.5%	34,442	6.9%	39,656	-7.2%
GOVERNMENT CENTER	192,122	182,515	5.3%	243,414	-21.1%	163,185	17.7%	240,794	-20.2%
HIALEAH	31,715	32,266	-1.7%	29,516	7.5%	29,491	7.5%	31,823	-0.3%
MIAMI INTERNATIONAL AIRPORT	36,016	37,881	-4.9%	46,115	-21.9%	34,438	4.6%	47,202	-23.7%
NORTHSIDE	27,355	36,067	-24.2%	36,127	-24.3%	26,198	4.4%	36,230	-24.5%
OKEECHOBEE	24,781	24,854	-0.3%	26,026	-4.8%	23,633	4.9%	27,611	-10.2%
OVERTOWN / ARENA	55,479	47,154	17.7%	49,911	11.2%	50,353	10.2%	50,628	9.6%
PALMETTO	34,321	28,847	19.0%	33,944	1.1%	30,846	11.3%	34,218	0.3%
SANTA CLARA	21,163	19,874	6.5%	19,245	10.0%	19,933	6.2%	19,207	10.2%
SOUTH MIAMI	57,805	55,638	3.9%	69,412	-16.7%	54,876	5.3%	70,613	-18.1%
TRI-RAIL	28,439	30,428	-6.5%	29,120	-2.3%	24,725	15.0%	30,227	-5.9%
UNIVERSITY	57,709	51,154	12.8%	61,253	-5.8%	59,758	-3.4%	53,164	8.5%
VIZCAYA	43,686	32,104	36.1%	32,497	34.4%	41,039	6.4%	37,584	16.2%
TOTAL	1,334,099	1,302,854	2.4%	1,549,118	-13.9%	1,227,182	8.7%	1,554,851	-14.2%

METRORAIL CUMULATIVE PERCENTAGE RIDERSHIP SHARE

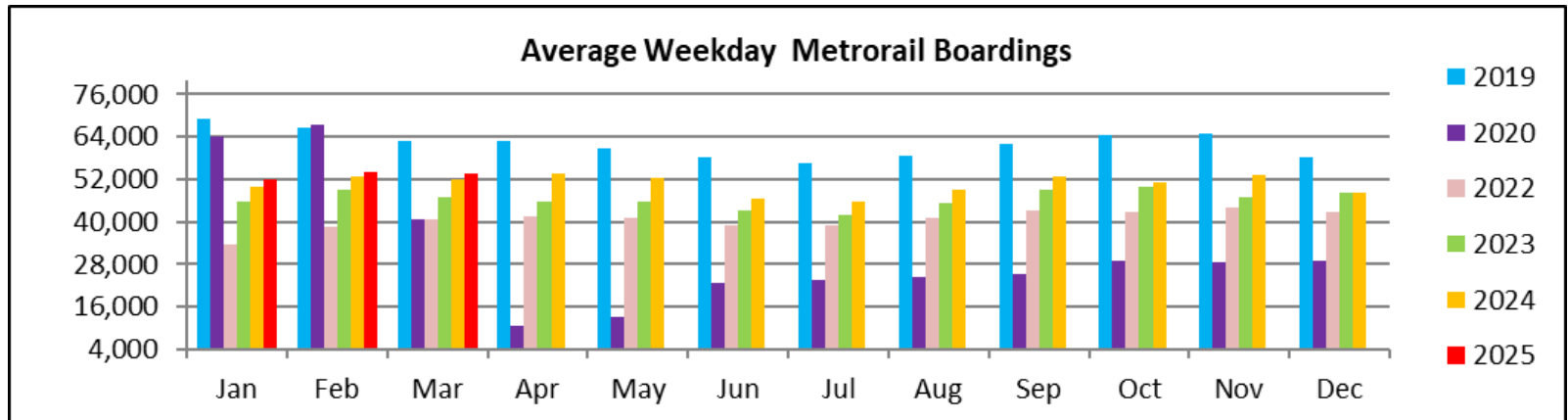
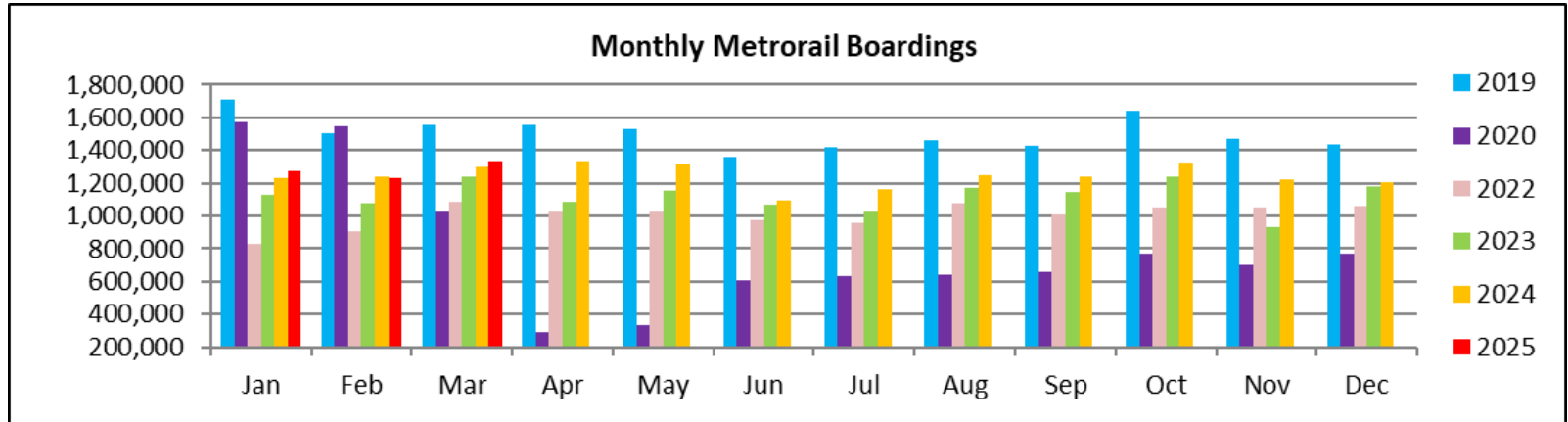


METRORAIL WEEKDAY RIDERSHIP SINCE 02/01/20 (TWO-WEEK MOVING AVERAGES)



- (1) The red dotted line represents the pre-pandemic benchmark month (Feb-20) maximum.
- (2) Pronounced local minima are generally due to hurricanes or other storms, less often data outages, with associated delayed reductions in smoothed ridership.

TOTAL MONTHLY AND AVERAGE WEEKDAY RIDERSHIP YEAR OVER YEAR COMPARISON CHARTS – METRORAIL

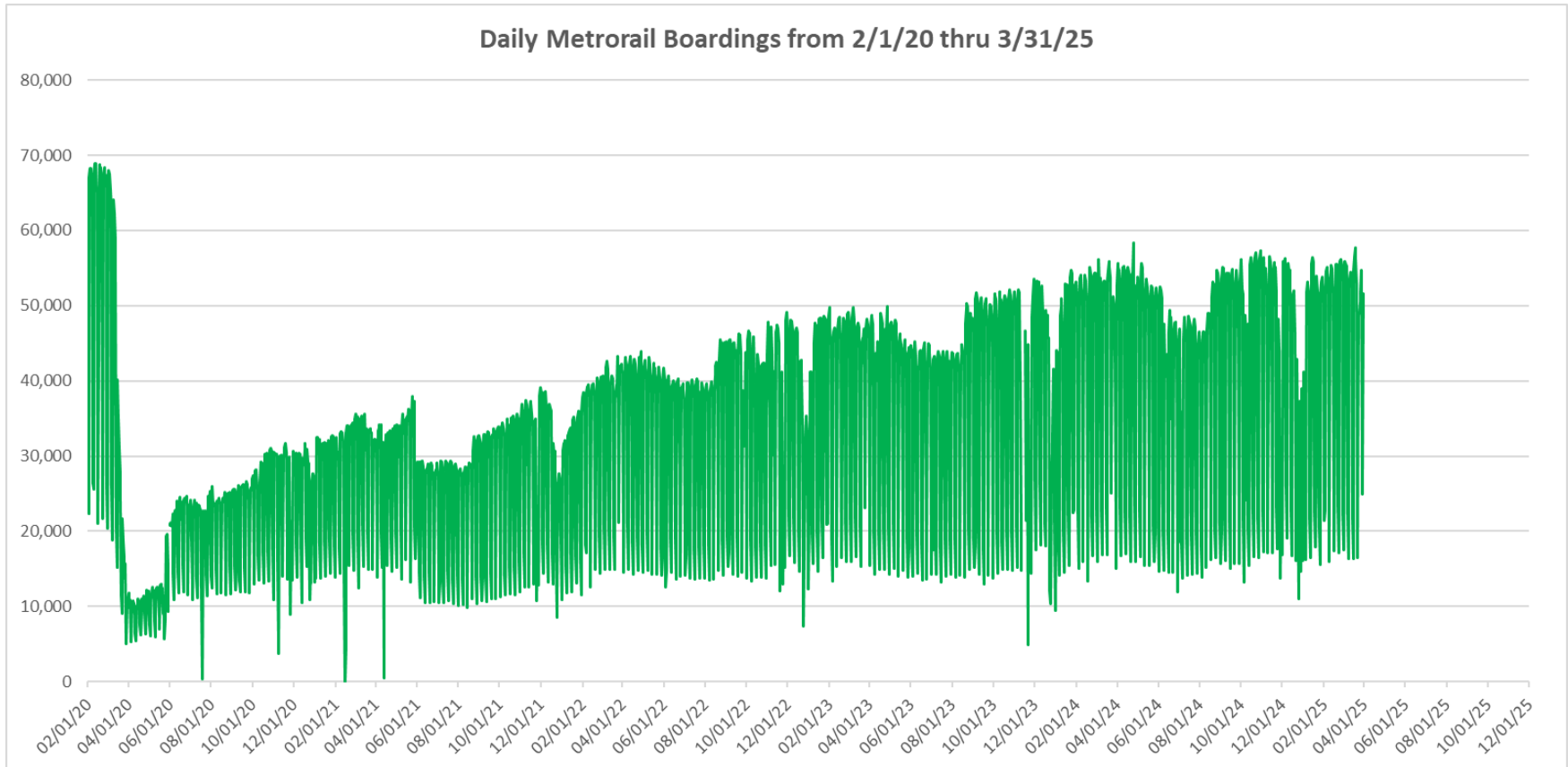


**“TOP 5 / BOTTOM 5” RAIL STATIONS AVERAGE WEEKDAY RIDERSHIP PERFORMANCE
YEAR OVER YEAR COMPARISONS**

Station	Mar-25	Mar-24	Absolute Delta (1)	Percent Delta
DOUGLAS ROAD	4,113	3,310	803	24.3%
DADELAND NORTH	4,987	4,196	791	18.8%
UHEALTH JACKSON	4,914	4,187	727	17.4%
VIZCAYA	1,737	1,276	461	36.2%
GOVERNMENT CENTER	7,399	7,039	360	5.1%
CULMER	572	958	-386	-40.3%
NORTHSIDE	1,064	1,380	-316	-22.9%
DADELAND SOUTH	4,641	4,795	-154	-3.2%
TRI-RAIL	1,115	1,205	-90	-7.5%
MIAMI INTERNATIONAL AIRPORT	1,261	1,336	-75	-5.6%

(1) Averages rounded to the nearest boarding.

DAILY METRORAIL RIDERSHIP SINCE FEBRUARY 1, 2020



- (1) There was no Metrobus, Metrorail and Metromover service on 5/31/20, as a safety precaution, and no service for any of the four modes on 9/28/22 as a result of Hurricane Ian.
- (2) The dip at the start of the second week of Nov-20 is due to Hurricane Eta; these are *raw data* from the Unleash Live contractor AI video system.
- (3) The dip on 4/13/21 is due to a loss of connectivity at all stations, affecting a few stations over the next two days as well; a similar loss of connectivity is seen on 11/21/23.
- (4) The reduction seen beginning 6/1/21 is partly due to the resumption of fares and partly the result of resuming reporting Cubic faregate data rather than video camera counts.
- (5) As a result of free fares to launch the Better Bus Network, faregates are open beginning 11/13/23, and Unleash Live AI video system ridership counts are reported starting 11/17/23; the isolated peak in Dec-23 is visible.
- (6) Periodic (weekly) variations are prominent, since weekday ridership is almost always significantly higher than weekend or holiday ridership; a few low-count days are due to system outages, often associated with construction or renovation work.

METRORAIL PARKING PATRONAGE SUMMARY

March 2025

PARK-RIDE LOT	ACTUAL CAPACITY (1)	ACTUAL OCCUPANCY (2)	PERCENT OCCUPANCY
DADELAND SOUTH	1,260	836	66%
DADELAND NORTH	1,963	1,524	78%
SOUTH MIAMI	1,081	385	36%
UNIVERSITY	260	208	80%
DOUGLAS ROAD	222		
COCONUT GROVE	100		
VIZCAYA	120	85	71%
CULMER	40	19	47%
SANTA CLARA	61	31	51%
ALLAPATTAH	74	9	12%
EARLINGTON HEIGHTS	361	155	43%
BROWNSVILLE	100	87	87%
DR. MARTIN LUTHER KING JR. (MDT)	62		
DR. MARTIN LUTHER KING JR. (GARAGE)	631		
NORTHSIDE	126	86	68%
HIALEAH	338	83	25%
OKEECHOBEE	818	173	21%
PALMETTO	700	184	26%
TOTAL	8,317	3,864	46%

- (1) Number of spaces could vary each week; shown are available spaces during final week of month, as submitted by DTPW Safety & Security office.
- (2) All sampled occupancy data provided by DTPW Safety & Security office; calculations are revisions to those submitted by that entity.
- (3) Daily averages rounded to nearest unit, with fewer samples at some stations than others, depending on staffing levels; calculations are based on sampled counted days only per raw data submitted, with resulting average daily occupancy shown.

Metromover



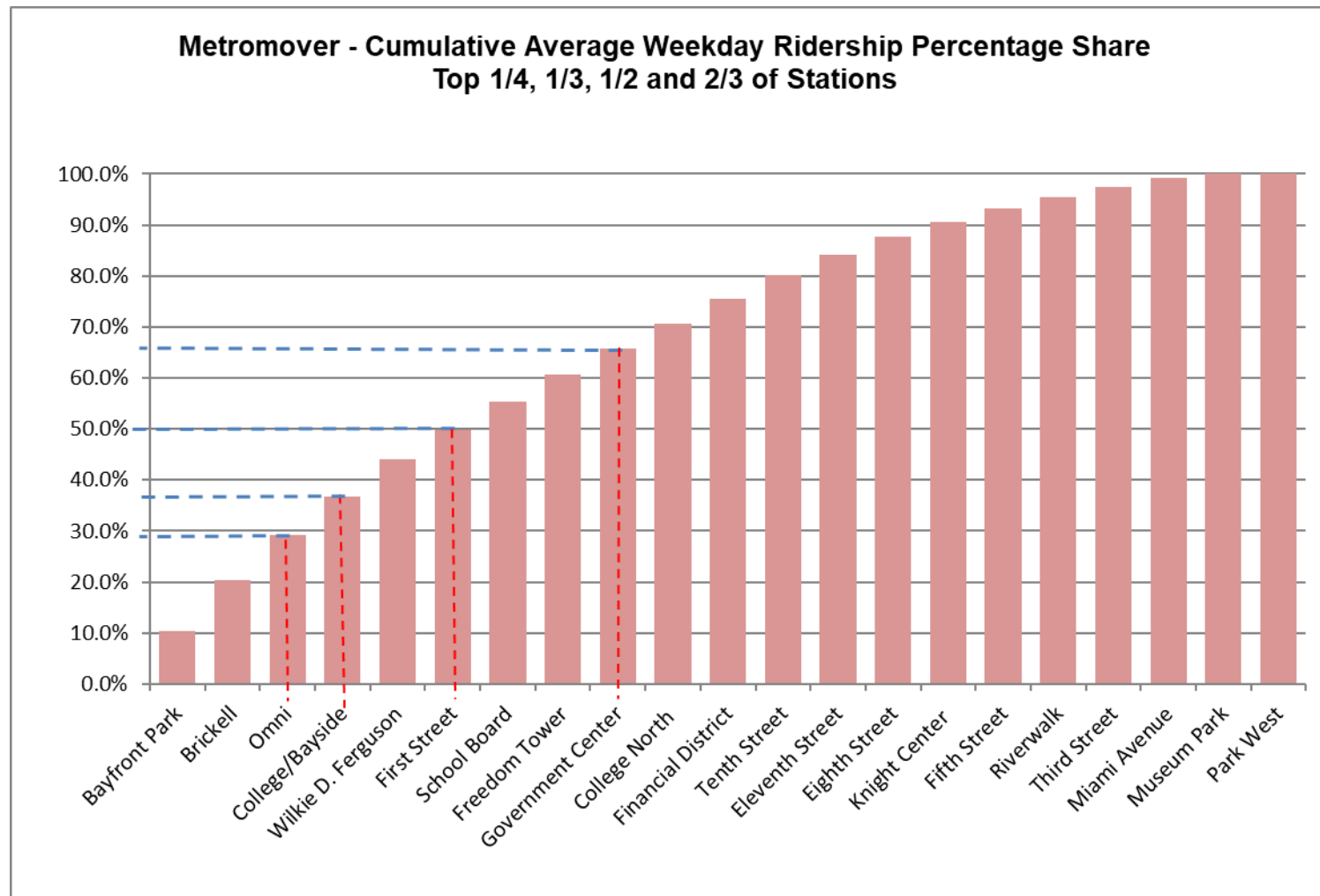
March 2025

METROMOVER MONTHLY AND AVERAGE DAILY BOARDINGS BY STATION

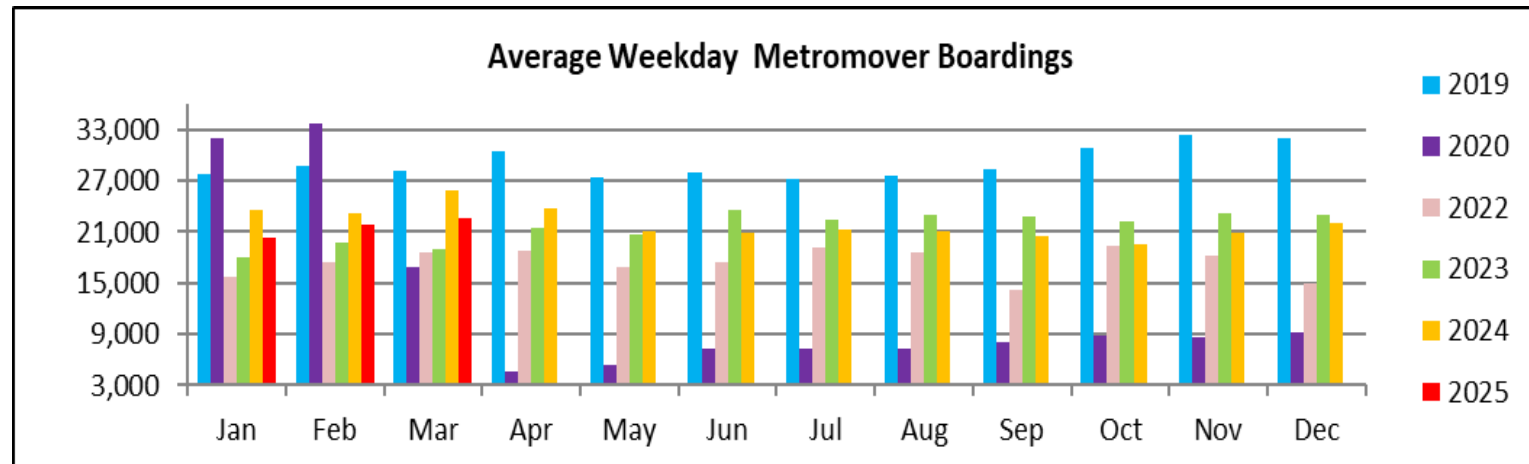
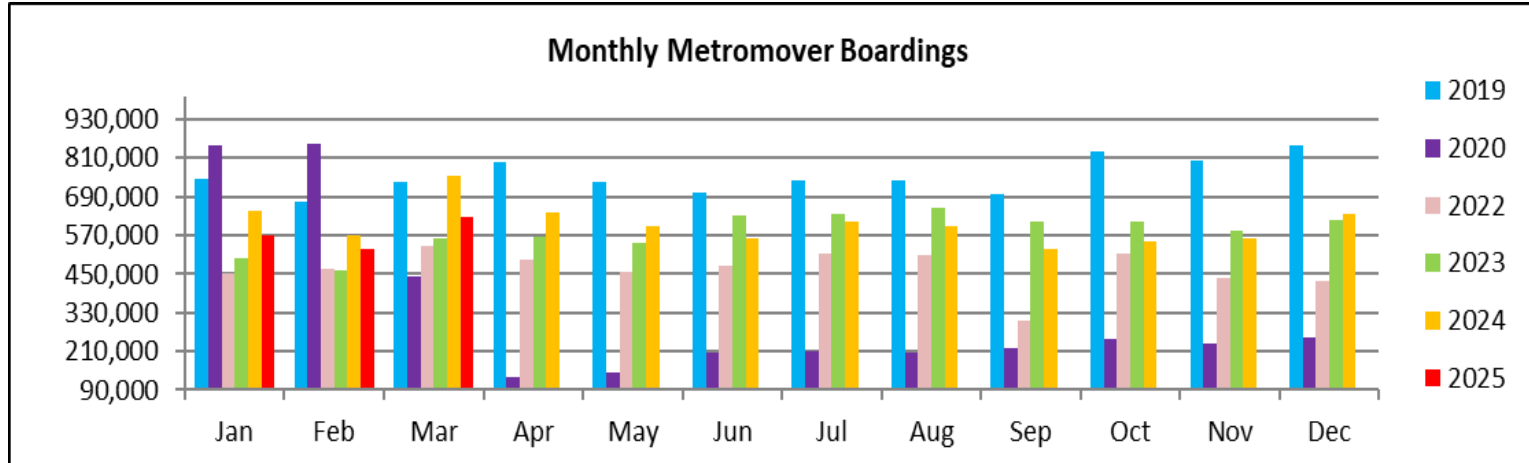
	Average Weekday	Average Weekday	Percent Change	Average Saturday	Average Saturday	Percent Change	Average Sunday	Average Sunday	Percent Change	Total Monthly	Total Monthly	Percent Change
STATIONS	Mar-25	Mar-24	25 vs 24	Mar-25	Mar-24	25 vs 24	Mar-25	Mar-24	25 vs 24	Mar-25	Mar-24	25 vs 24
School Board	1,255	1,417	-11.5%	915	1,056	-13.3%	927	1,069	-13.3%	35,562	40,385	-11.9%
Omni	2,005	2,004	0.0%	1,826	1,775	2.9%	1,783	1,754	1.7%	60,142	59,738	0.7%
Museum Park	198	402	-50.6%	234	579	-59.6%	236	417	-43.3%	6,514	13,415	-51.4%
Eleventh Street	881	407	116.3%	705	411	71.4%	707	387	82.6%	25,571	12,550	103.8%
Park West		726			737			618			22,014	
Freedom Tower	1,209	1,011	19.6%	1,097	888	23.6%	1,060	1,032	2.7%	36,169	25,870	39.8%
Government Center	1,124	2,546	-55.9%	913	1,986	-54.0%	780	1,790	-56.4%	6,188	72,342	-91.4%
Miami Avenue	379	382	-0.9%	249	346	-27.8%	302	294	2.9%	10,706	11,218	-4.6%
Third Street	459	468	-1.9%	413	492	-16.1%	333	514	-35.2%	13,371	14,862	-10.0%
Knight Center	613	593	3.3%	300	415	-27.8%	340	322	5.6%	16,073	16,148	-0.5%
Bayfront Park	2,359	2,389	-1.3%	2,318	2,620	-11.5%	2,044	2,137	-4.4%	71,348	73,958	-3.5%
First Street	1,280	1,300	-1.5%	1,245	1,567	-20.5%	1,352	1,497	-9.7%	39,876	42,628	-6.5%
College/Bayside	1,729	1,727	0.1%	1,533	1,665	-7.9%	1,630	1,599	2.0%	52,115	52,588	-0.9%
College North	1,104	1,015	8.8%	654	650	0.6%	666	546	21.9%	29,792	27,290	9.2%
Wilkie D. Ferguson	1,652	1,537	7.5%	934	1,109	-15.8%	1,017	919	10.7%	44,442	42,420	4.8%
Riverwalk	496	749	-33.8%	356	534	-33.4%	348	541	-35.7%	13,929	21,107	-34.0%
Fifth Street	611	679	-10.1%	408	508	-19.7%	429	497	-13.6%	17,012	19,290	-11.8%
Eighth Street	823	2,063	-60.1%	736	1,666	-55.8%	744	1,567	-52.5%	24,680	59,489	-58.5%
Tenth Street	1,078	1,180	-8.6%	813	904	-10.1%	827	846	-2.3%	30,831	33,521	-8.0%
Brickell	2,212	2,484	-10.9%	1,646	1,727	-4.7%	1,598	1,774	-9.9%	62,680	69,678	-10.0%
Financial District	1,082	834	29.7%	664	531	25.1%	675	484	39.4%	29,417	22,596	30.2%
TOTAL	22,548	25,915	-13.0%	17,959	22,166	-19.0%	17,799	20,604	-13.6%	626,418	753,107	-16.8%

(*) Some Metromover stations were closed for construction during the CY 2023-2025 period, due to construction work; associated were numerous power and data outages, including on weekends.

METROMOVER CUMULATIVE PERCENTAGE RIDERSHIP SHARE



TOTAL MONTHLY AND AVERAGE WEEKDAY RIDERSHIP YEAR OVER YEAR COMPARISON CHARTS – METROMOVER

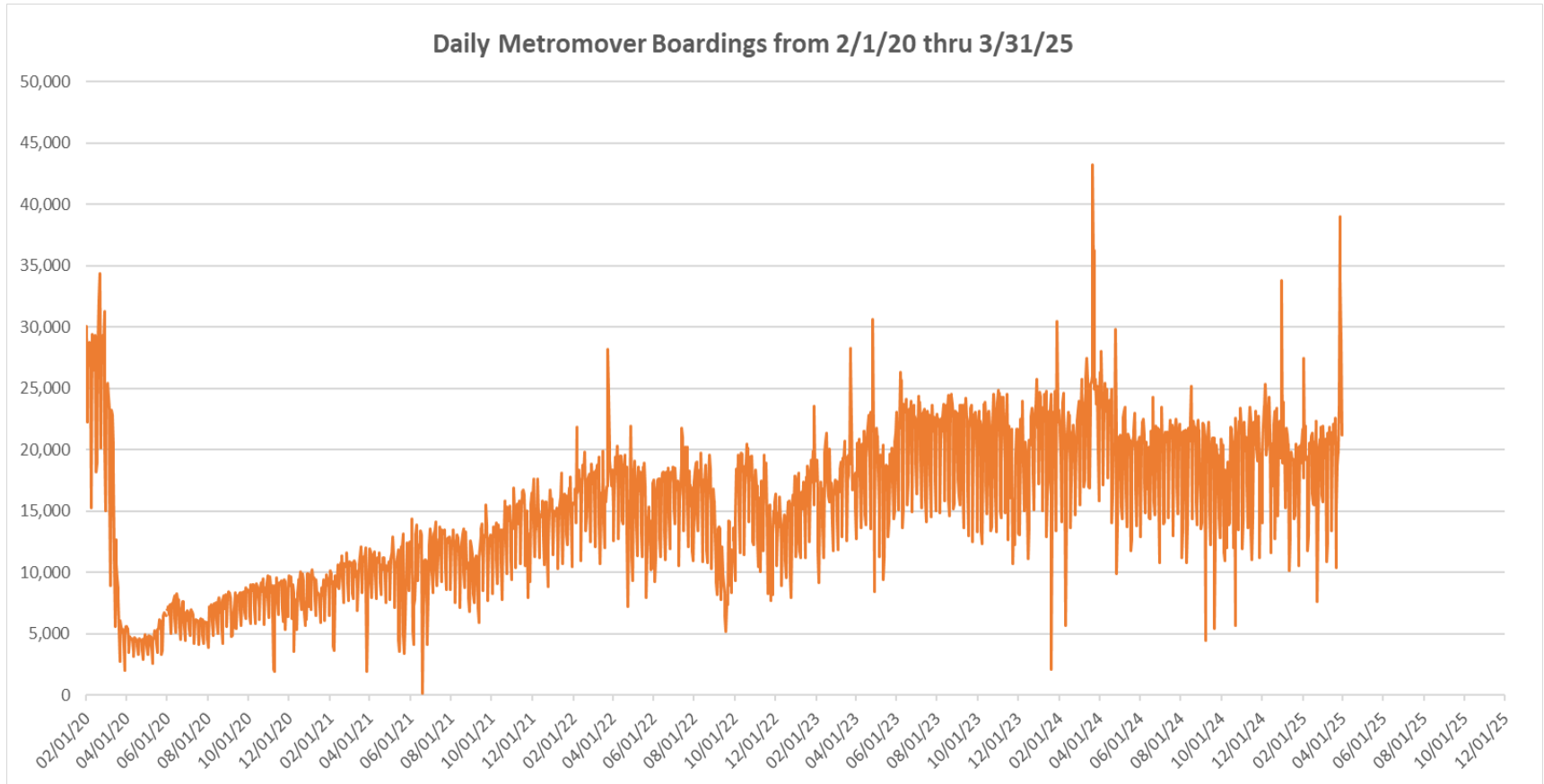


**“TOP 5 / BOTTOM 5” MOVER STATIONS AVERAGE WEEKDAY RIDERSHIP PERFORMANCE
YEAR OVER YEAR COMPARISONS**

Station	Mar-25	Mar-24	Absolute Delta (1)	Percent Delta
Eleventh Street	881	407	474	116.3%
Financial District	1,082	834	248	29.7%
Freedom Tower	1,209	1,011	198	19.6%
Wilkie D. Ferguson	1,652	1,537	115	7.5%
College North	1,104	1,015	90	8.8%
Government Center	1,124	2,546	-1,422	-55.9%
Eighth Street	823	2,063	-1,240	-60.1%
Brickell	2,212	2,484	-272	-10.9%
Riverwalk	496	749	-253	-33.8%
Third Street	459	468	-9	-1.9%

(1) Averages rounded to the nearest boarding.

DAILY METROMOVER RIDERSHIP SINCE FEBRUARY 1, 2020



- (1) There was no Metrobus, Metrorail and Metromover service on 5/31/20, as a safety precaution, and no service for any of the four modes on 9/28/22 as a result of Hurricane Ian.
- (2) The dip at the start of the second week of Nov-20 is due to Hurricane Eta; these are *raw data* from the UTA contractor APC system. Other more recent dips are due to various station closures (mostly on weekends) for system maintenance purposes. Pronounced peaks are associated with major events in Downtown Miami, such as the Corporate Run and Ultramusic Festival.
- (3) Periodic (weekly) variations are prominent, since weekday ridership is almost always significantly higher than weekend or holiday ridership; a few low-count days are due to system outages, often associated with construction or renovation work, including on weekends.

Special Transportation Services

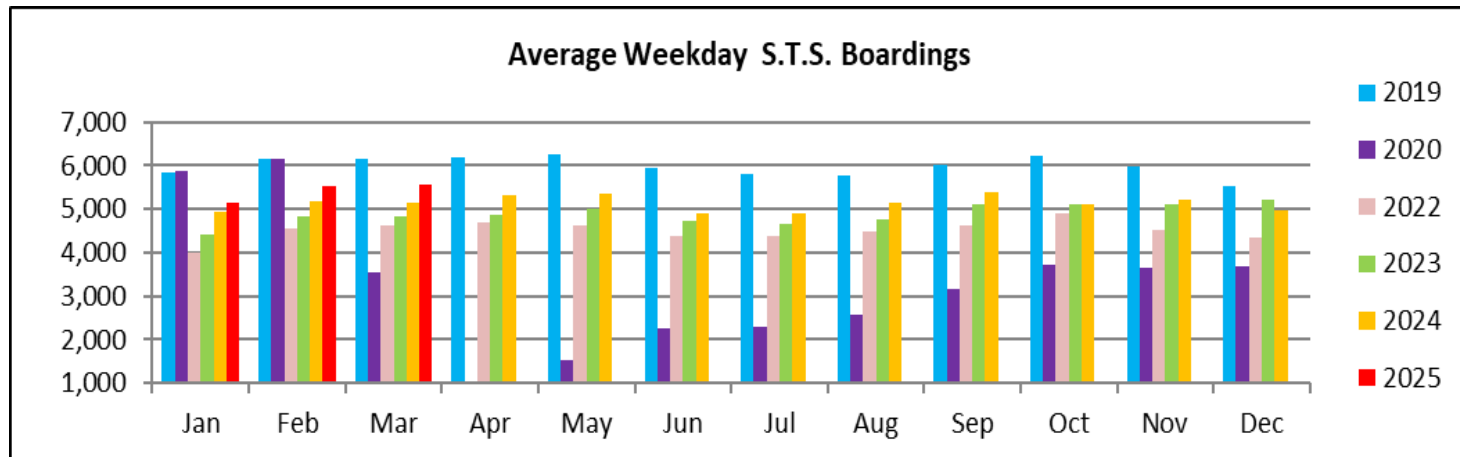
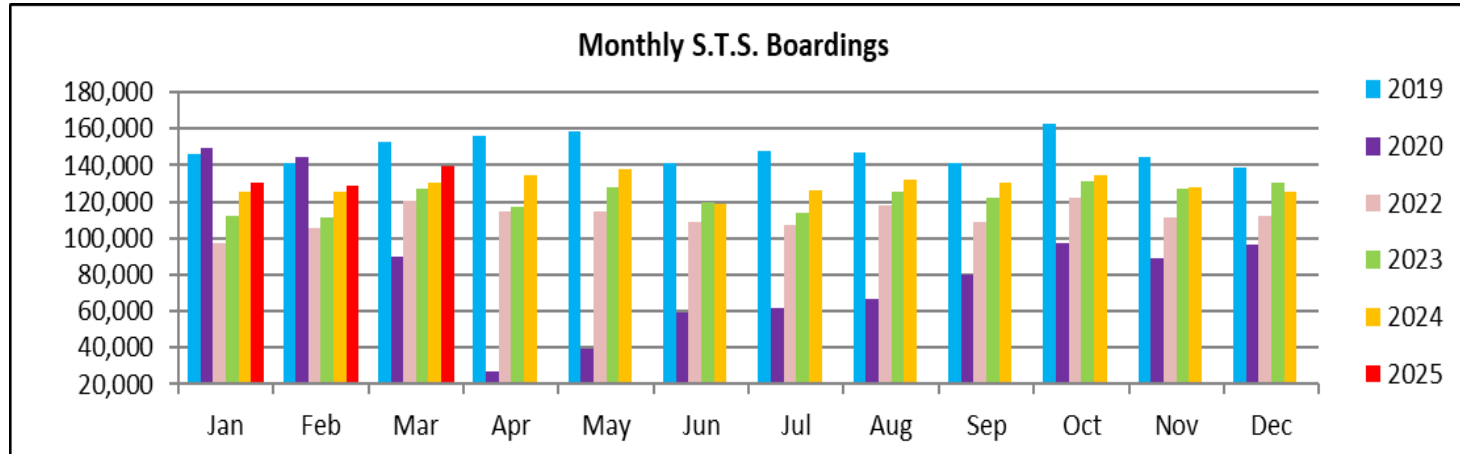


STS MONTHLY AND AVERAGE DAILY BOARDINGS **March 2025**

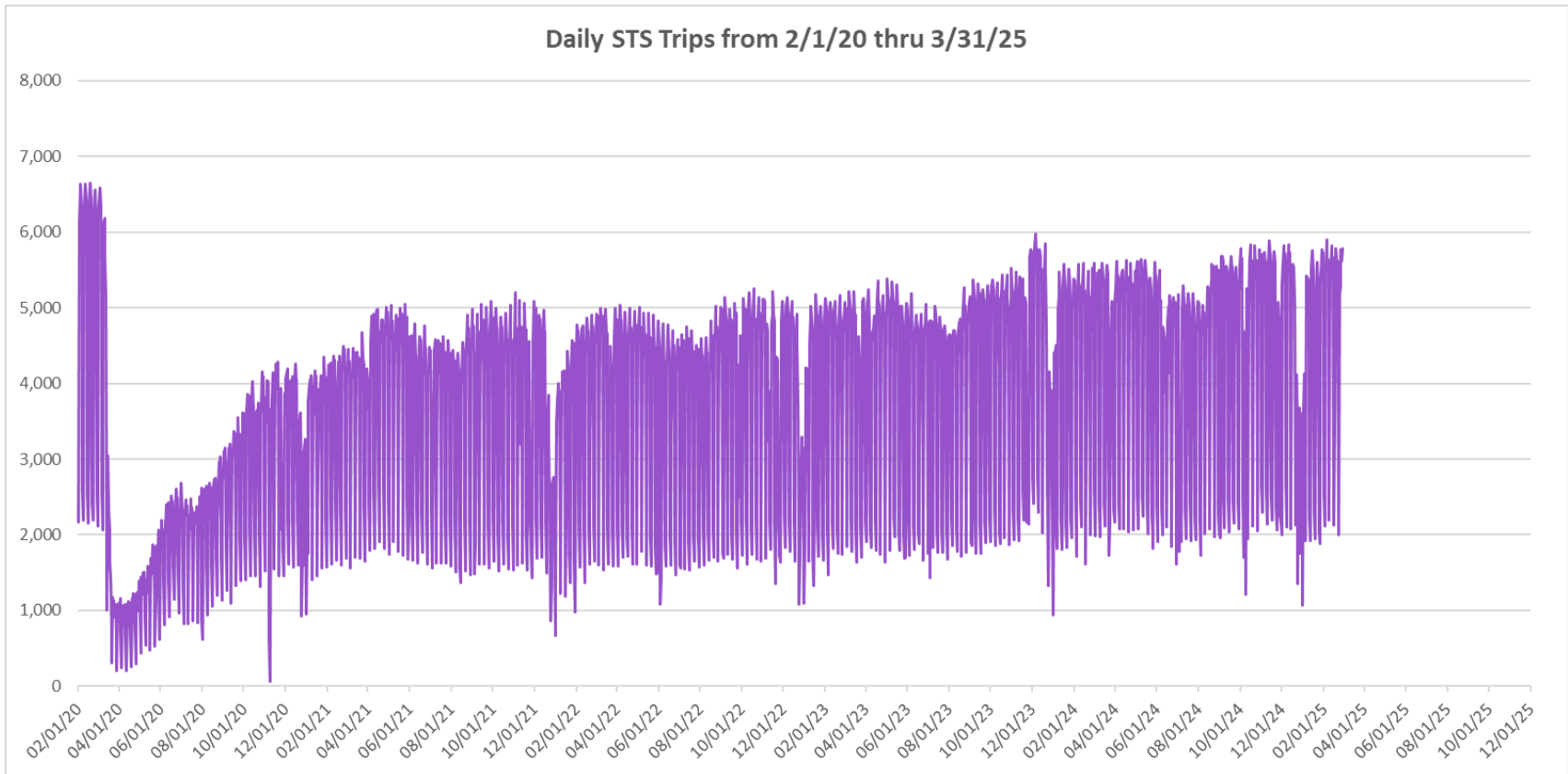
Measure	timeline	Ambulatory	Wheelchair	Total Clients (*)
Average Weekday	Mar-25	4,631	917	5,548
Average Saturday	Mar-25	2,073	434	2,507
Average Sunday	Mar-25	1,716	371	2,087
Total Monthly	Mar-25	116,195	23,287	139,482
Average Weekday	Mar-24	4,320	837	5,157
Average Saturday	Mar-24	1,933	367	2,300
Average Sunday	Mar-24	1,713	368	2,081
Total Monthly	Mar-24	108,941	21,262	130,203
Average Weekday	Mar-23	4,009	825	4,834
Average Saturday	Mar-23	1,775	393	2,168
Average Sunday	Mar-23	1,433	311	1,744
Total Monthly	Mar-23	105,037	21,782	126,819
% Change Current vs. March 2024 Weekday		7.2%	9.5%	7.6%
% Change Current vs. March 2024 Saturday		7.2%	18.1%	9.0%
% Change Current vs. March 2024 Sunday		0.2%	0.8%	0.3%
% Change Current vs. March 2024 Month Total		6.7%	9.5%	7.1%
% Change Current vs. March 2023 Weekday		15.5%	11.2%	14.8%
% Change Current vs. March 2023 Saturday		16.8%	10.5%	15.6%
% Change Current vs. March 2023 Sunday		19.8%	19.5%	19.7%
% Change Current vs. March 2023 Month Total		10.6%	6.9%	10.0%

(*) Trip count data provided by STS contractor.

TOTAL MONTHLY AND AVERAGE WEEKDAY RIDERSHIP YEAR OVER YEAR COMPARISON CHARTS – SPECIAL TRANSPORTATION SERVICES (S.T.S.)

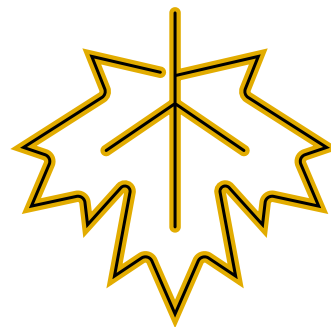
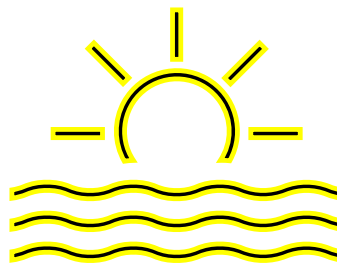


DAILY STS RIDERSHIP SINCE FEBRUARY 1, 2020



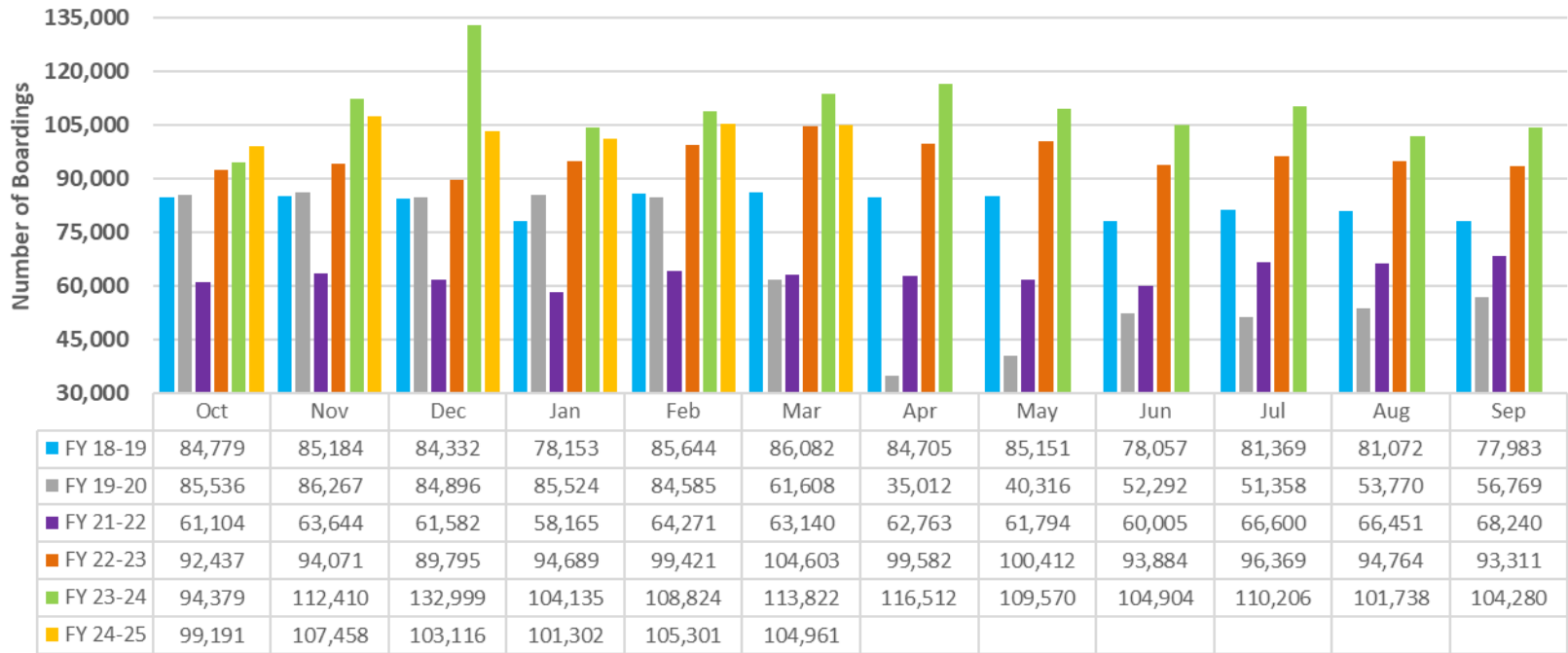
- (1) There was no service (for any of the four modes) on 9/28/22 as a result of Hurricane Ian.
- (2) The dip at the start of the second week of Nov-20 is due to Hurricane Eta; the isolated peak in Dec-23 is due to the free fares launch of the Better Bus Network.
- (3) Periodic (weekly) variations are prominent, since weekday ridership is almost always significantly higher than weekend or holiday ridership.

Ridership Seasonality



RIDERSHIP SEASONALITY – AVERAGE WEEKEND RIDERSHIP BY MONTH AND FISCAL YEAR FOR METROBUS

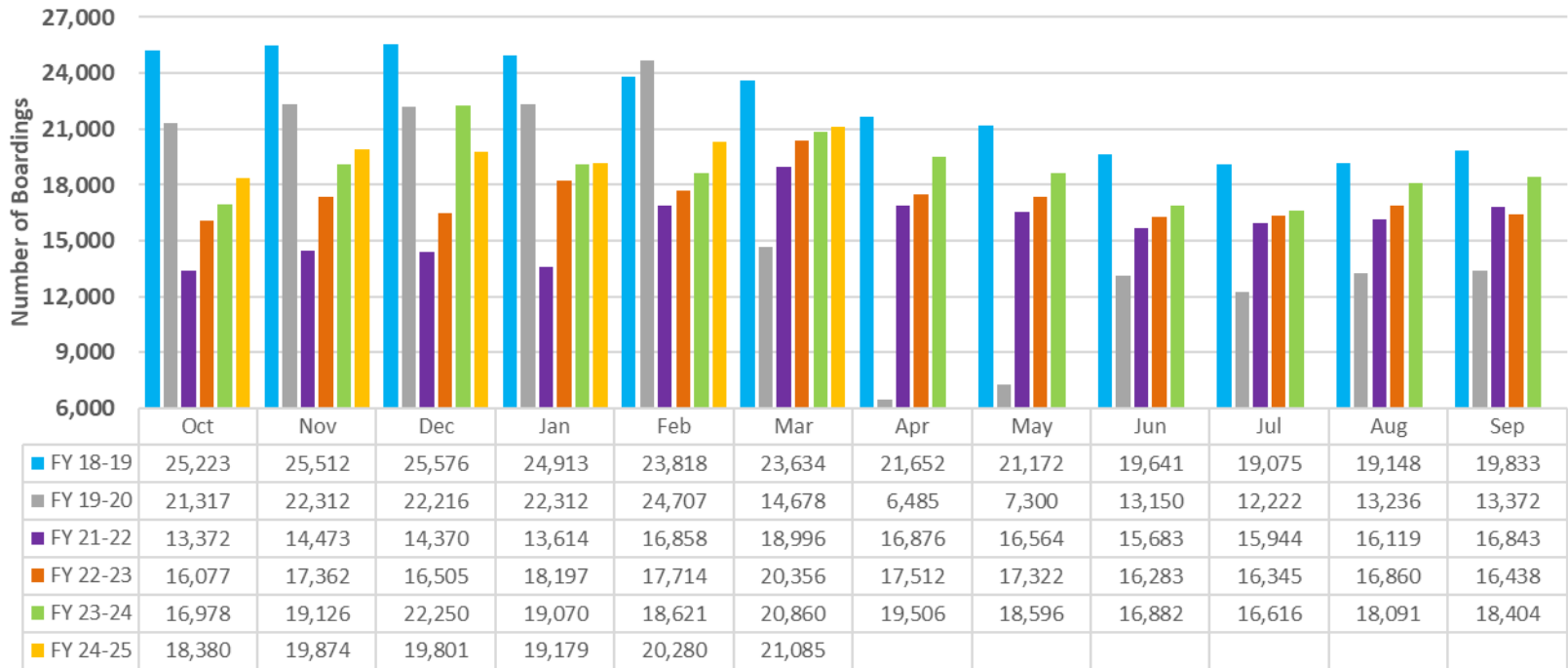
FY 19-25 Metrobus Average Weekend Ridership (*)



(*) Note: here, average weekend ridership for each month is defined as the average of average Saturday and average Sunday ridership; the pronounced increase beginning Nov-23 can be attributed to the launch of the Better Bus Network and the attendant free fares, which ended on New Year's Day 2024; the large jump from FY 21-22 to FY 22-23 can be largely attributed to the 10/01/22 switchover from farebox to APC reporting.

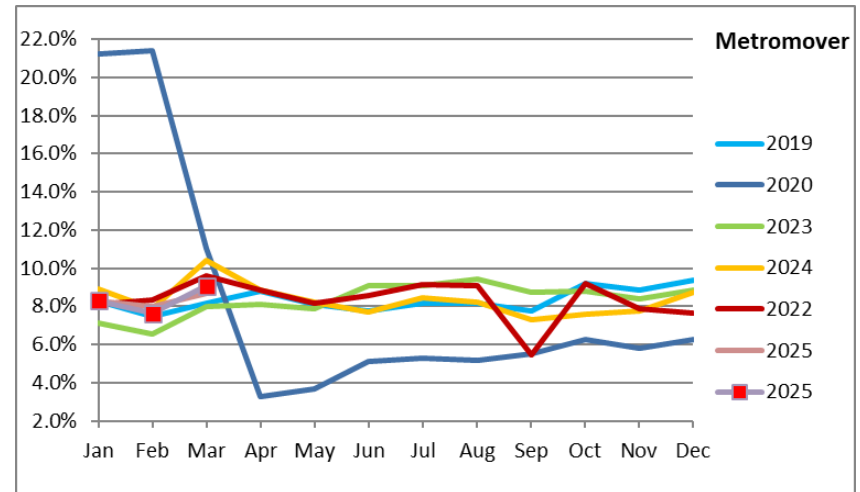
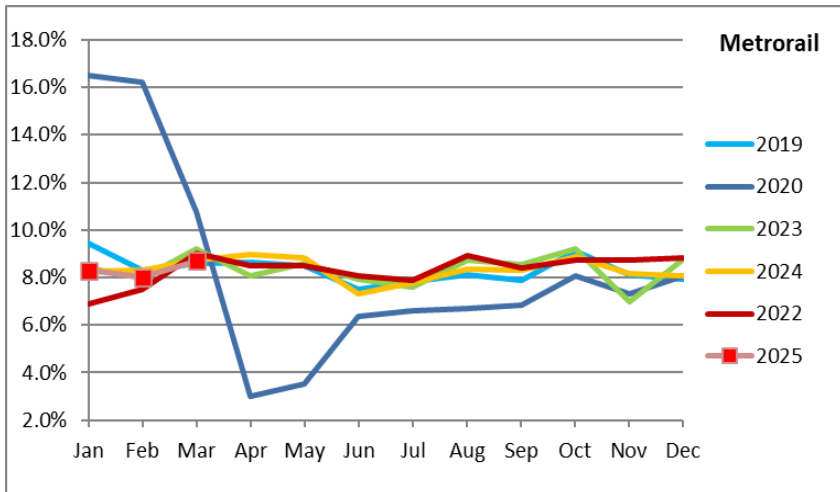
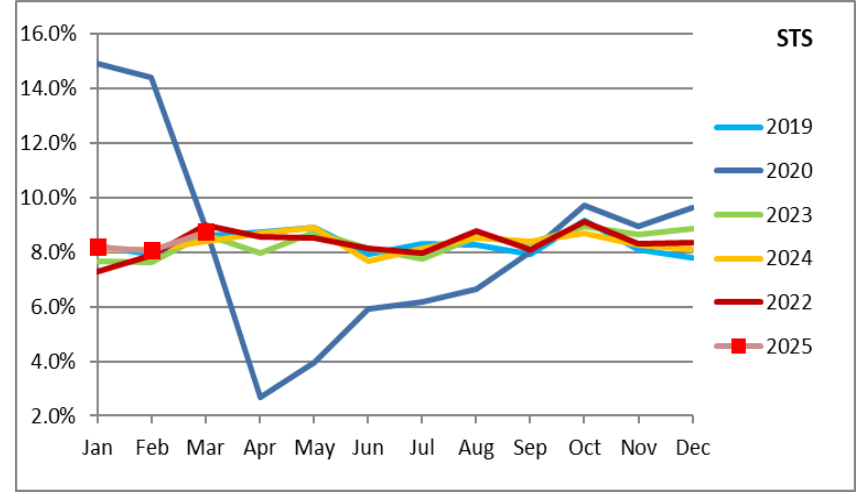
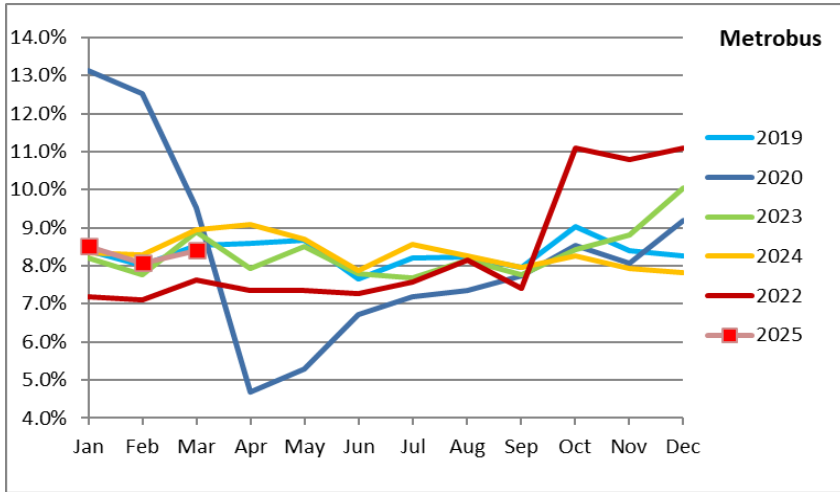
RIDERSHIP SEASONALITY – AVERAGE WEEKEND RIDERSHIP BY MONTH AND FISCAL YEAR FOR METRORAIL

FY 19-25 Metrorail Average Weekend Ridership (*)



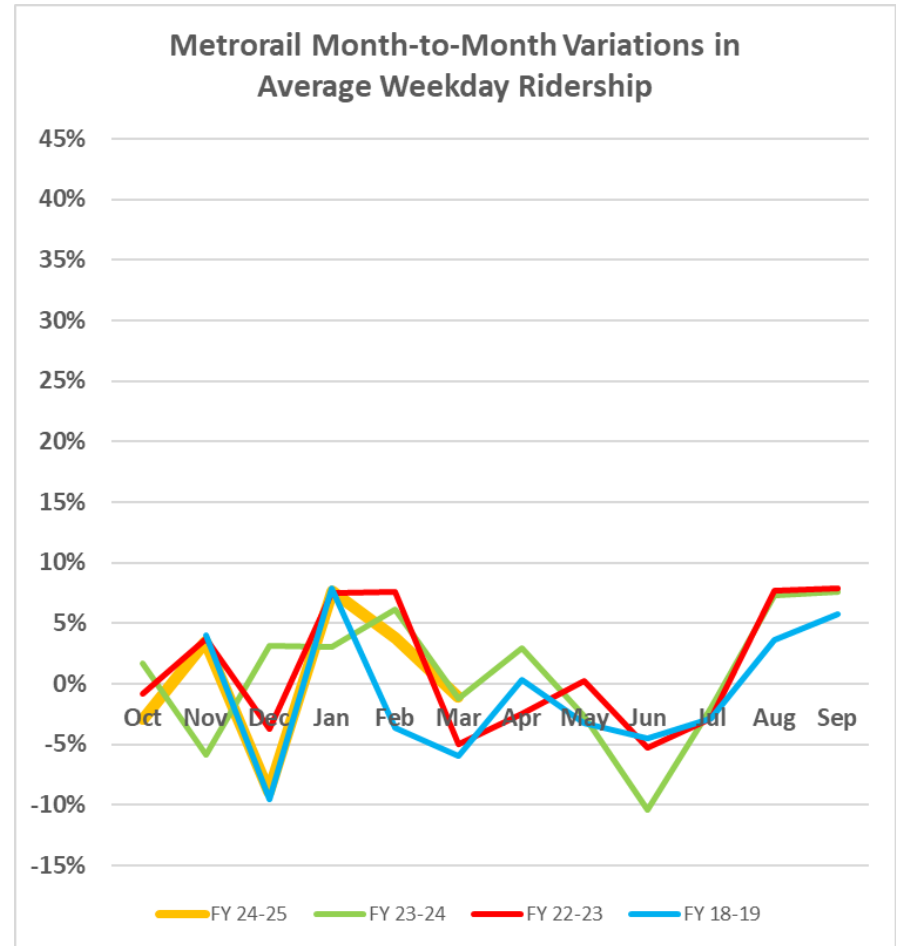
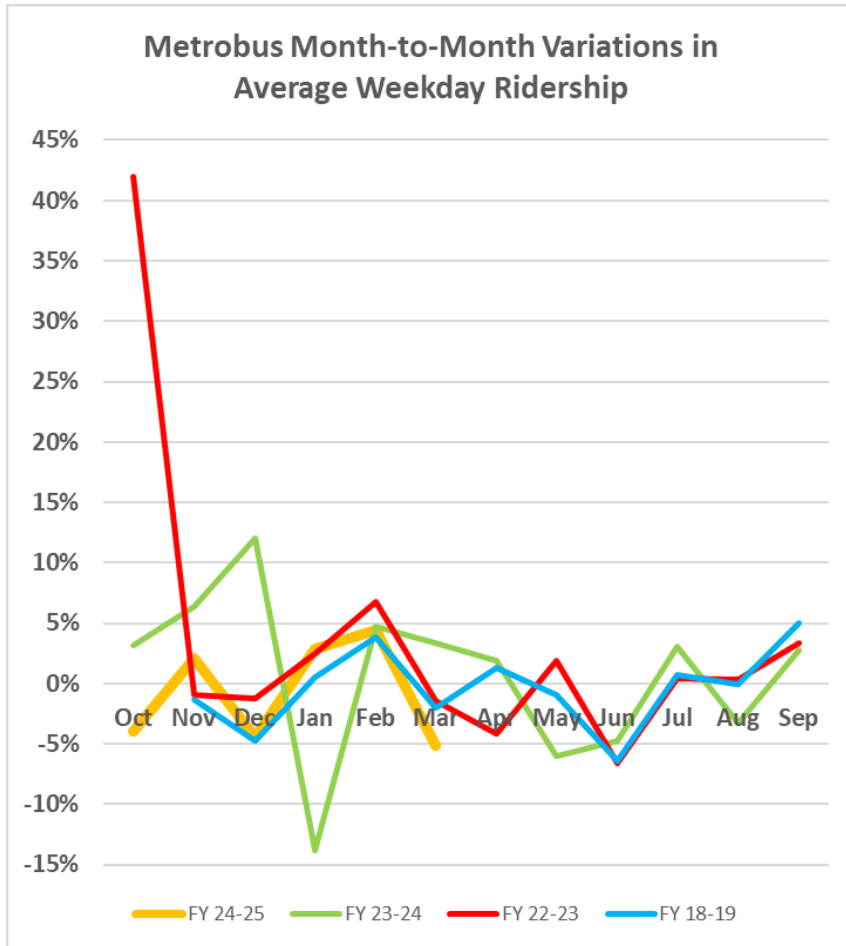
(*) Note: here, average weekend ridership for each month is defined as the average of average Saturday and average Sunday ridership; the pronounced increase beginning Nov-23 can be attributed to the launch of the Better Bus Network and the attendant free fares, which ended on New Year's Day 2024.

RIDERSHIP SEASONALITY – PERCENT SHARE OF TOTAL RIDERSHIP BY MONTH AND CALENDAR YEAR FOR EACH MODE



Note: the prominent dip seen in the beginning in the spring of 2020 is due to the SARS-CoV-2 pandemic. The sharp increase in Metrobus percentage share beginning October 2022 is due to the switchover from farebox to automatic passenger counter reporting. The pronounced rise beginning November 2023 for Metrobus and Metrorail can be attributed to the launch of the Better Bus Network and the attendant free fares, which ended on New Year's Day 2024.

RIDERSHIP VOLATILITY – MONTH-TO-MONTH AVERAGE WEEKDAY RIDERSHIP PERCENTAGE CHANGES FOR METROBUS AND METRORAIL



Note: The pronounced rise beginning Nov-23 for Metrobus and Metrorail can be attributed to the launch of the Better Bus Network and the attendant free fares, which ended on New Year's Day 2024, leading to the subsequent pronounced dip. For Metrobus, the very high peak at the start of FY 22-23 is due to the switchover from farebox to automatic passenger counter ridership reporting at the very beginning of that fiscal year (10/01/22).