



TRANSPORTATION AND PUBLIC WORKS

RIDERSHIP TECHNICAL REPORT

Division of Performance Analysis



May 2025

Table of Contents

<i>Table of Contents</i>	2-3
All Modes Overview	4
Total Monthly Weekday, Saturday and Sunday Monthly Boardings By Mode	5
Average Weekday, Saturday and Sunday Boardings by Mode	6
Metrobus Total Monthly Ridership Comparisons by Fiscal Year	7
Metrorail Total Monthly Ridership Comparisons by Fiscal Year	8
Metromover Total Monthly Ridership Comparisons by Fiscal Year	9
STS Total Monthly Ridership Comparisons by Fiscal Year	10
All-Modes Combined Total Monthly Ridership Comparisons By Fiscal Year	11
All Modes Combined Total Monthly and Average Weekday Ridership – Year over Year Comparison Charts	12
Average Weekday Ridership – Modal Splits	13
Daily Ridership for All Modes Combined since 2/1/20	14
Metrobus	15
Better Bus Network (BBN, 11/13/2023 Lineup) Bus Route Changes, Pt 1 and Pt 2	16-17
Metrobus Average Weekday Boardings by Route	18-20
Metrobus Average Saturday Boardings by Route	21-22
Metrobus Average Sunday Boardings by Route	23-24
Metrobus Monthly Total Boardings by Route	25-27
Bus Ridership by Route Service Type Lineups Comparison (month-over-month & month-over-17 months)	28-31
Bus Routes as Ranked by Percentage of Average Weekday Ridership	32
Metrobus Cumulative Percentage Average Weekday Ridership Share by Route (Top 75%)	33
Metrobus Estimated Weekday Ridership since 02/01/20 (two-week moving averages)	34
Total Monthly and Average Weekday Bus Ridership – Year over Year Comparison Charts	35
Bus “Top 10 / Bottom 10” Bus Routes Average Weekday Ridership Performance – Year-over-Year Comparisons	36
Bus “Top 10 / Bottom 10” Bus Routes Sets Average Weekday Ridership Performance – Year-over-Year Comparisons	37
Bus “Top 10 / Bottom 10” Bus Routes Sets Average Weekday Ridership Performance – Month-over-17 Month Comparisons	38
Daily Metrobus Ridership since 2/1/20	39
Metrobus Parking Patronage Summary	40

Table of Contents (continued)

Metrorail	41
Metrorail Average Weekday Boardings by Station	42
Metrorail Average Saturday Boardings by Station	43
Metrorail Average Sunday Boardings by Station	44
Metrorail Total Monthly Boardings by Station	45
Metrorail Cumulative Percentage Average Weekday Ridership Share	46
Metrorail Weekday Ridership since 02/01/20 (two-week moving averages)	47
Total Monthly and Average Weekday Rail Ridership – Year over Year Comparison Charts	48
“Top 5 / Bottom 5” Stations Average Weekday Ridership Performance	49
Daily Metrorail Ridership since 2/1/20	50
Metrorail Parking Patronage Summary	51
Metromover	52
Monthly and Average Daily Mover Boardings by Station	53
Metromover Cumulative Percentage Average Weekday Ridership Share	54
Total Monthly and Average Weekday Mover Ridership – Year over Year Comparison Charts	55
“Top 5 / Bottom 5” Stations Average Weekday Ridership Performance	56
Special Transportation Services (STS)	57
STS Monthly and Average Daily Boardings	58
Total Monthly and Average Weekday STS Ridership – Year over Year Comparison Charts	59
Daily STS Ridership since 2/1/20	60
Ridership Seasonality	61
Ridership Seasonality – Average Weekend Ridership by Month and Fiscal Year for Metrobus	62
Ridership Seasonality – Average Weekend Ridership by Month and Fiscal Year for Metrorail	63
Ridership Volatility – Month-to-Month Average Weekday Ridership Percentage Changes for Metrobus and Metrorail	64

All Modes Overview



TOTAL MONTHLY WEEKDAY, SATURDAY AND SUNDAY BOARDINGS BY MODE
May 2025

TRAVEL MODE	MONTH'S TOTAL WEEKDAYS RIDERSHIP	MONTH'S TOTAL SATURDAYS RIDERSHIP	MONTH'S TOTAL SUNDAYS RIDERSHIP	TOTAL MONTHLY RIDERSHIP	% CHANGE vs May-24 TOTAL MONTH RIDERSHIP
METROBUS (1)	3,775,093	536,830	314,651	4,626,574	-12.8%
METRORAIL (2)	1,099,495	102,247	58,939	1,260,681	-4.1%
METROMOVER	535,374	93,819	64,175	693,368	16.1%
STS PARATRANSIT (3)	121,630	12,864	8,484	142,978	3.6%
TOTAL	5,531,592	745,760	446,249	6,723,601	-8.6%

- (1) Metrobus ridership reporting through automatic passenger counters coupled with a new enhanced sensor system resumed on October 1, 2022.
- (2) Metrorail fares resumed on June 1, 2021, following a 14-month period of fare-free rides as a result of the SARS-CoV-2 pandemic. The NextFare System faregate data replaced the video data as Rail ridership data of record starting on that date, until free fares were reinstated for the Better Bus Network launch on 11/13/23. The NextFare System Rail faregate data collection and reporting resumed on New Year's Day 2024.
- (3) Paratransit (STS) ridership data as reported by the contractor and subsequently audited by the Department.

AVERAGE WEEKDAY, SATURDAY AND SUNDAY BOARDINGS BY MODE
May 2025

Travel Mode	Average Weekday	Average Saturday	Average Sunday	% Change vs. May-24 Weekday	% Change vs. May-24 Saturday	% Change vs. May-24 Sunday
METROBUS	171,595	107,366	78,663	-13.0%	-15.0%	-15.2%
METRORAIL	49,977	20,449	11,788	-4.3%	-4.2%	-25.6%
METROMOVER	24,335	18,764	12,835	15.1%	23.2%	-10.6%
STS PARATRANSIT	5,529	2,573	1,697	3.0%	5.9%	-16.2%
Totals	251,436	149,152	104,983	0.8%	9.8%	-67.6%

(*) Average ridership is calculated and published only for those days and stations or routes with nontrivial amounts of reported data.

METROBUS TOTAL MONTHLY RIDERSHIP COMPARISONS BY FISCAL YEAR

Bus Month	FY 19	FY 20	FY 21	FY 22	FY 23	FY 24	Variance FY 25 19 to 20 (*)	Variance 20 to 21 (*)	Variance 21 to 22	Variance 22 to 23 (**)	Variance 23 to 24	Variance 24 to 25	Variance 19 TO 25	
Oct	4,554,886	4,507,012	2,805,139	3,081,157	4,679,725	4,912,151	5,043,329	-1.1%	-37.8%	9.8%	51.9%	5.0%	2.7%	10.7%
Nov	4,245,535	4,197,225	2,651,290	3,056,726	4,549,666	5,135,172	4,835,529	-1.1%	-36.8%	15.3%	48.8%	12.9%	-5.8%	13.9%
Dec	4,081,581	4,126,990	3,022,530	3,123,883	4,677,460	5,857,057	4,773,057	1.1%	-26.8%	3.4%	49.7%	25.2%	-18.5%	16.9%
Jan	4,195,911	4,316,998	3,082,746	3,029,055	4,785,128	5,103,257	4,973,281	2.9%	-28.6%	-1.7%	58.0%	6.6%	-2.5%	18.5%
Feb	3,994,019	4,123,083	3,076,966	2,995,789	4,526,317	5,053,665	4,715,948	3.2%	-25.4%	-2.6%	51.1%	11.7%	-6.7%	18.1%
Mar	4,266,768	3,136,162	3,660,639	3,218,562	5,183,872	5,461,317	4,907,536	-26.5%	16.7%	-12.1%	61.1%	5.4%	-10.1%	15.0%
Apr	4,291,135	1,544,316	3,625,048	3,105,797	4,618,302	5,548,614	4,804,588	-64.0%	134.7%	-14.3%	48.7%	20.1%	-13.4%	12.0%
May	4,330,922	1,734,609	3,683,343	3,097,574	4,953,197	5,308,711	4,626,574	-59.9%	112.3%	-15.9%	59.9%	7.2%	-12.8%	6.8%
Jun	3,823,863	2,210,725	2,672,570	3,064,059	4,545,050	4,805,039		-42.2%	20.9%	14.6%	48.3%	5.7%		
Jul	4,094,906	2,366,749	2,769,907	3,189,994	4,484,458	5,230,894		-42.2%	17.0%	15.2%	40.6%	16.6%		
Aug	4,109,613	2,422,014	2,843,552	3,442,006	4,756,063	5,051,346		-41.1%	17.4%	21.0%	38.2%	6.2%		
Sep	3,971,220	2,546,923	2,877,110	3,123,572	4,525,426	4,860,066		-35.9%	13.0%	8.6%	44.9%	7.4%		
FY Total	49,960,359	37,232,806	36,770,840	37,528,174	56,284,664	62,327,289		-25.5%	-1.2%	2.1%	50.0%	10.7%		

(*) The severe losses in ridership beginning in March 2020 are due to the SARS-CoV-2 pandemic, followed by an overall gradual recovery beginning in March 2021.

(**) The consistently very high increases seen at the start of FY 23 are largely due to the 10/01/2022 switchover from fareboxes to Automatic Passenger Counters in estimating ridership on the directly operated (non-contracted) bus routes.

METRORAIL TOTAL MONTHLY RIDERSHIP COMPARISONS BY FISCAL YEAR

Rail Month	FY 19	FY 20	FY 21	FY 22	FY 23	FY 24	FY 25	Variance 19 to 20 (*)	Variance 20 to 21 (*)	Variance 21 to 22	Variance 22 to 23	Variance 23 to 24	Variance 24 to 25	Variance 19 TO 25
Oct	1,757,225	1,643,166	769,525	844,383	1,053,191	1,237,096	1,321,113	-6.5%	-53.2%	9.7%	24.7%	17.5%	6.8%	-24.8%
Nov	1,656,929	1,469,448	699,492	850,881	1,055,066	935,121	1,220,720	-11.3%	-52.4%	21.6%	24.0%	-11.4%	30.5%	-26.3%
Dec	1,553,804	1,433,928	769,194	860,436	1,063,096	1,177,272	1,202,284	-7.7%	-46.4%	11.9%	23.6%	10.7%	2.1%	-22.6%
Jan	1,708,695	1,576,340	799,119	832,924	1,127,340	1,233,350	1,273,616	-7.7%	-49.3%	4.2%	35.3%	9.4%	3.3%	-25.5%
Feb	1,501,458	1,549,118	730,792	905,162	1,072,791	1,240,316	1,227,182	3.2%	-52.8%	23.9%	18.5%	15.6%	-1.1%	-18.3%
Mar	1,554,851	1,027,319	917,097	1,084,978	1,239,336	1,302,854	1,334,099	-33.9%	-10.7%	18.3%	14.2%	5.1%	2.4%	-14.2%
Apr	1,559,446	287,803	827,414	1,027,139	1,087,816	1,336,511	1,347,928	-81.5%	187.5%	24.1%	5.9%	22.9%	0.9%	-13.6%
May	1,531,597	337,696	887,111	1,023,322	1,151,819	1,314,112	1,260,681	-78.0%	162.7%	15.4%	12.6%	14.1%	-4.1%	-17.7%
Jun	1,359,966	608,758	723,469	975,477	1,066,861	1,092,060		-55.2%	18.8%	34.8%	9.4%	2.4%		
Jul	1,419,158	632,964	722,159	953,331	1,022,937	1,159,375		-55.4%	14.1%	32.0%	7.3%	13.3%		
Aug	1,463,646	641,275	749,578	1,076,490	1,174,138	1,247,019		-56.2%	16.9%	43.6%	9.1%	6.2%		
Sep	1,427,726	654,244	795,749	1,012,331	1,146,864	1,240,457		-54.2%	21.6%	27.2%	13.3%	8.2%		
FY Total	18,494,501	11,862,059	9,390,699	11,446,854	13,261,255	14,515,543		-35.9%	-20.8%	21.9%	15.9%	9.5%		

(*) The severe losses in ridership beginning in March 2020 are due to the SARS-CoV-2 pandemic, followed by an overall gradual recovery beginning in April 2021.

METROMOVER TOTAL MONTHLY RIDERSHIP COMPARISONS BY FISCAL YEAR

Mover Month	FY 19	FY 20	FY 21	FY 22	FY 23	FY 24	FY 25	Variance 9 to 20 (*)	Variance 20 to 21 (*)	Variance 21 to 22	Variance 22 to 23	Variance 23 to 24	Variance 24 to 25	19 TO 25
Oct	790,533	831,234	250,044	389,065	514,308	614,479	550,054	5.1%	-69.9%	55.6%	32.2%	19.5%	-10.5%	-30.4%
Nov	735,198	799,632	232,422	418,929	439,150	584,887	561,326	8.8%	-70.9%	80.2%	4.8%	33.2%	-4.0%	-23.6%
Dec	767,239	849,832	251,019	450,320	426,073	616,455	634,296	10.8%	-70.5%	79.4%	-5.4%	44.7%	2.9%	-17.3%
Jan	746,728	847,773	255,968	451,566	498,566	644,639	571,831	13.5%	-69.8%	76.4%	10.4%	29.3%	-11.3%	-23.4%
Feb	675,160	855,398	260,332	465,968	459,264	570,242	526,198	26.7%	-69.6%	79.0%	-1.4%	24.2%	-7.7%	-22.1%
Mar	737,814	441,200	302,502	535,857	558,396	753,107	626,418	-40.2%	-31.4%	77.1%	4.2%	34.9%	-16.8%	-15.1%
Apr	795,696	130,549	310,772	495,982	565,943	640,281	720,763	-83.6%	138.1%	59.6%	14.1%	13.1%	12.6%	-9.4%
May	734,645	146,454	292,922	455,120	547,948	597,232	693,368	-80.1%	100.0%	55.4%	20.4%	9.0%	16.1%	-5.6%
Jun	701,318	203,637	286,145	477,286	632,423	559,913		-71.0%	40.5%	66.8%	32.5%	-11.5%		
Jul	739,814	210,596	368,847	512,094	635,954	610,437		-71.5%	75.1%	38.8%	24.2%	-4.0%		
Aug	739,785	205,995	344,319	508,359	657,267	597,361		-72.2%	67.1%	47.6%	29.3%	-9.1%		
Sep	699,879	219,696	331,915	305,185	610,810	527,660		-68.6%	51.1%	-8.1%	100.1%	-13.6%		
FY Total	8,863,809	5,741,996	3,487,207	5,465,731	6,546,102	7,316,693		-35.2%	-39.3%	56.7%	19.8%	11.8%		

(*) The severe losses in ridership beginning in March 2020 are due to the SARS-CoV-2 pandemic, followed by an overall gradual recovery beginning in April 2021.

SPECIAL TRANSPORTATION SERVICES (STS) TOTAL MONTHLY RIDERSHIP COMPARISONS BY FISCAL YEAR

STS Month	FY 19	FY 20	FY 21	FY 22	FY 23	FY 24	FY 25	Variance 19 to 20 (*)	Variance 20 to 21 (*)	Variance 21 to 22	Variance 22 to 23	Variance 23 to 24	Variance 24 to 25	Variance 19 to 25
Oct	162,564	162,704	97,388	115,122	122,189	130,958	134,852	0.1%	-40.1%	18.2%	6.1%	7.2%	3.0%	-17.0%
Nov	145,653	144,366	89,387	110,289	111,578	127,025	127,979	-0.9%	-38.1%	23.4%	1.2%	13.8%	0.8%	-12.1%
Dec	136,110	138,642	96,366	104,496	112,019	130,093	125,724	1.9%	-30.5%	8.4%	7.2%	16.1%	-3.4%	-7.6%
Jan	146,268	149,114	97,928	97,541	112,632	125,513	130,857	1.9%	-34.3%	-0.4%	15.5%	11.4%	4.3%	-10.5%
Feb	141,396	144,392	98,285	105,706	111,748	125,732	128,725	2.1%	-31.9%	7.6%	5.7%	12.5%	2.4%	-9.0%
Mar	153,191	89,634	112,930	120,718	126,819	130,203	139,482	-41.5%	26.0%	6.9%	5.1%	2.7%	7.1%	-8.9%
Apr	155,808	26,877	120,122	114,912	116,882	134,677	146,010	-82.7%	346.9%	-4.3%	1.7%	15.2%	8.4%	-6.3%
May	158,665	39,654	118,636	114,505	127,782	137,958	142,978	-75.0%	199.2%	-3.5%	11.6%	8.0%	3.6%	-9.9%
Jun	141,320	59,093	112,397	109,054	119,527	118,860		-58.2%	90.2%	-3.0%	9.6%	-0.6%		
Jul	148,232	61,765	110,059	107,188	113,623	126,391		-58.3%	78.2%	-2.6%	6.0%	11.2%		
Aug	147,331	66,563	110,766	117,941	125,510	132,503		-54.8%	66.4%	6.5%	6.4%	5.6%		
Sep	141,387	80,346	115,406	108,788	122,065	130,244		-43.2%	43.6%	-5.7%	12.2%	6.7%		
FY Total	1,777,925	1,163,150	1,279,670	1,326,260	1,422,374	1,550,157		-34.6%	10.0%	3.6%	7.2%	9.0%		

(*) The severe losses in ridership beginning in March 2020 are due to the SARS-CoV-2 pandemic, followed by an overall gradual recovery beginning in April 2021.

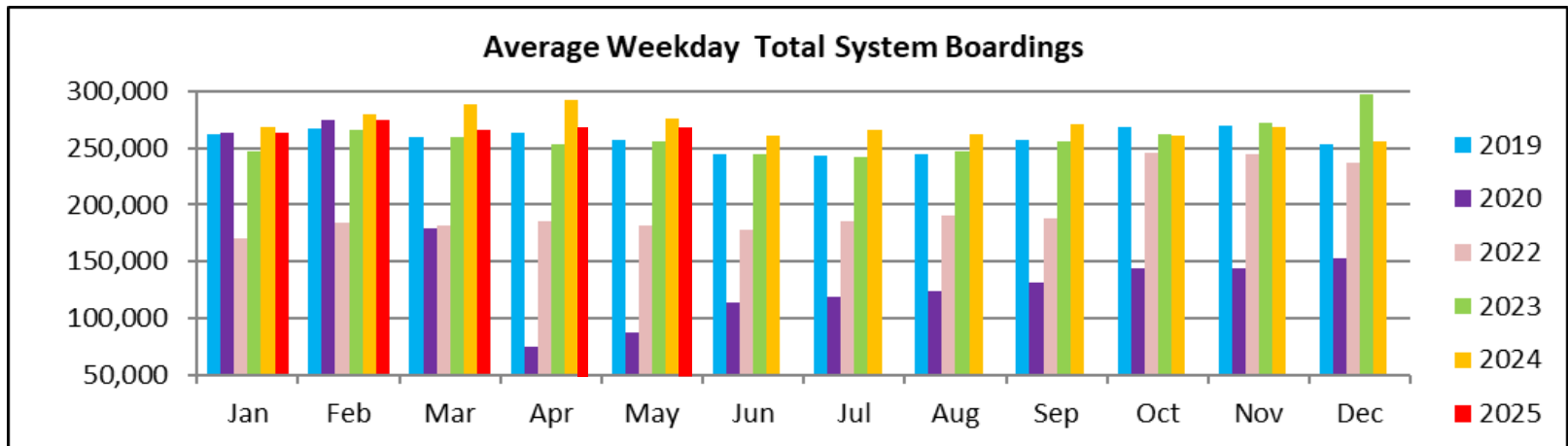
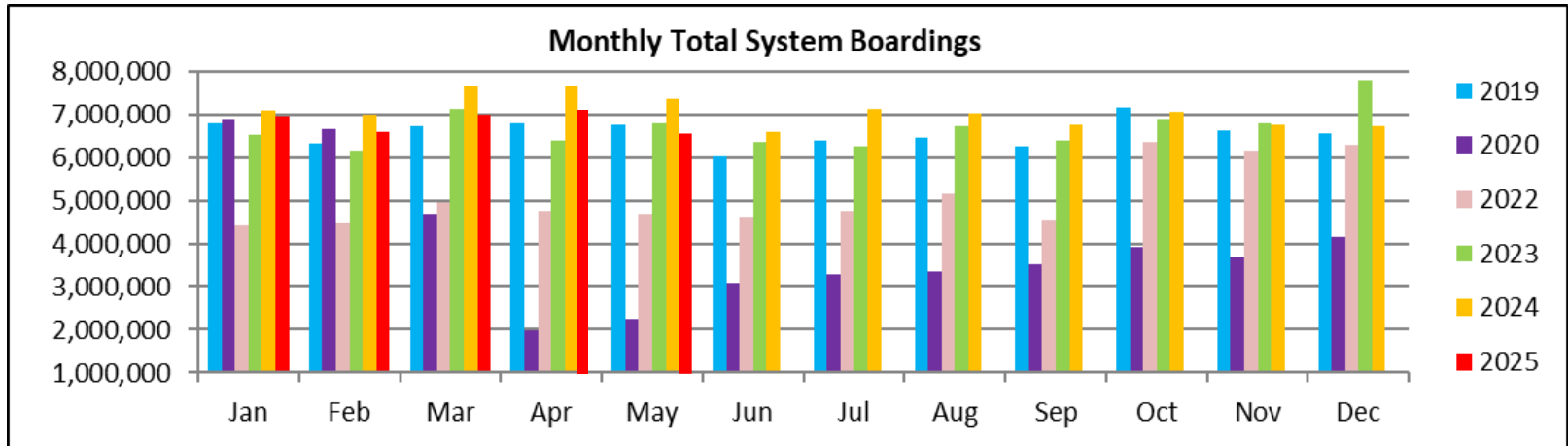
ALL-MODES COMBINED TOTAL MONTHLY RIDERSHIP COMPARISONS BY FISCAL YEAR

All Modes Month	FY 19	FY 20	FY 21	FY 22	FY 23	FY 24	FY 25	Variance (*) 19 TO 20	Variance (*) 20 TO 21	Variance /ariance (**) 21 TO 22	Variance 22 TO 23	Variance 23 TO 24	Variance 24 TO 25	Variance 19 TO 25
Oct	7,265,208	7,144,116	3,922,096	4,429,727	6,369,413	6,894,684	7,049,348	-1.7%	-45.1%	12.9%	43.8%	8.2%	2.2%	-3.0%
Nov	6,783,315	6,610,671	3,672,591	4,436,825	6,155,460	6,782,205	6,745,554	-2.5%	-44.4%	20.8%	38.7%	10.2%	-0.5%	-0.6%
Dec	6,538,734	6,549,392	4,139,109	4,539,135	6,278,648	7,780,877	6,735,361	0.2%	-36.8%	9.7%	38.3%	23.9%	-13.4%	3.0%
Jan	6,797,602	6,890,225	4,235,761	4,411,086	6,523,666	7,106,759	6,949,585	1.4%	-38.5%	4.1%	47.9%	8.9%	-2.2%	2.2%
Feb	6,312,033	6,671,991	4,166,375	4,472,625	6,170,120	6,989,955	6,598,053	5.7%	-37.6%	7.4%	38.0%	13.3%	-5.6%	4.5%
Mar	6,712,624	4,694,315	4,993,168	4,960,115	7,108,423	7,647,481	7,007,535	-30.1%	6.4%	-0.7%	43.3%	7.6%	-8.4%	4.4%
Apr	6,802,085	1,989,545	4,883,356	4,743,830	6,388,943	7,660,083	7,019,287	-70.8%	145.5%	-2.9%	34.7%	19.9%	-8.4%	3.2%
May	6,755,829	2,258,413	4,982,012	4,690,521	6,780,746	7,358,013	6,723,601	-66.6%	120.6%	-5.9%	44.6%	8.5%	-8.6%	-0.5%
Jun	6,026,467	3,082,213	3,794,581	4,625,876	6,363,861	6,575,872		-48.9%	23.1%	21.9%	37.6%	3.3%		
Jul	6,402,110	3,272,074	3,970,972	4,762,607	6,256,972	7,127,097		-48.9%	21.4%	19.9%	31.4%	13.9%		
Aug	6,460,375	3,335,847	4,048,215	5,144,796	6,712,978	7,028,229		-48.4%	21.4%	27.1%	30.5%	4.7%		
Sep	6,240,212	3,501,209	4,120,180	4,549,876	6,405,165	6,758,427		-43.9%	17.7%	10.4%	40.8%	5.5%		
FY Total	79,096,594	56,000,011	50,928,416	55,767,019	77,514,395	85,709,682		-29.2%	-9.1%	9.5%	39.0%	10.6%		

(*) The severe losses in ridership beginning in March 2020 are due to the SARS-CoV-2 pandemic, followed by an overall gradual recovery beginning in March 2021.

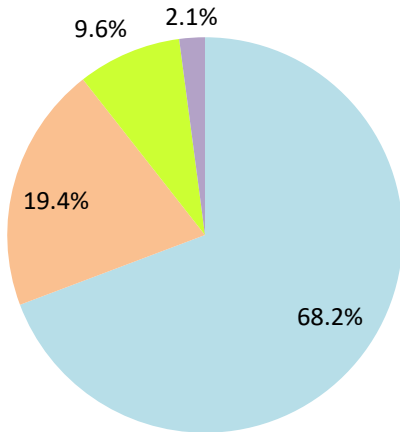
(**) The consistently very high increases seen at the start of FY 23 are largely due to the 10/01/2022 switchover from fareboxes to Automatic Passenger Counters in estimating ridership on the directly operated (non-contracted) bus routes.

TOTAL MONTHLY AND AVERAGE WEEKDAY RIDERSHIP YEAR OVER YEAR COMPARISON CHARTS – ALL MODES COMBINED



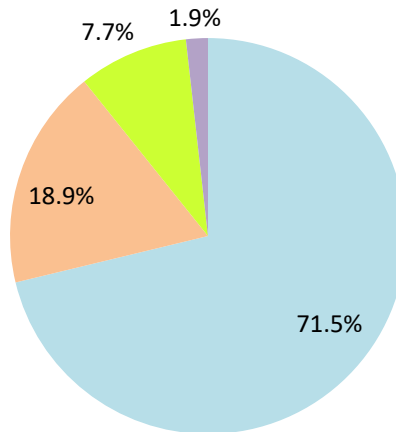
AVERAGE WEEKDAY RIDERSHIP - MODAL SPLITS

May 2025



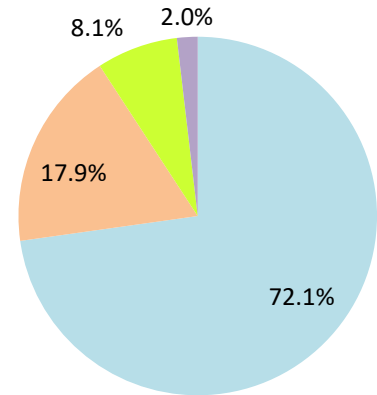
boardings

May 2024



boardings

May 2023

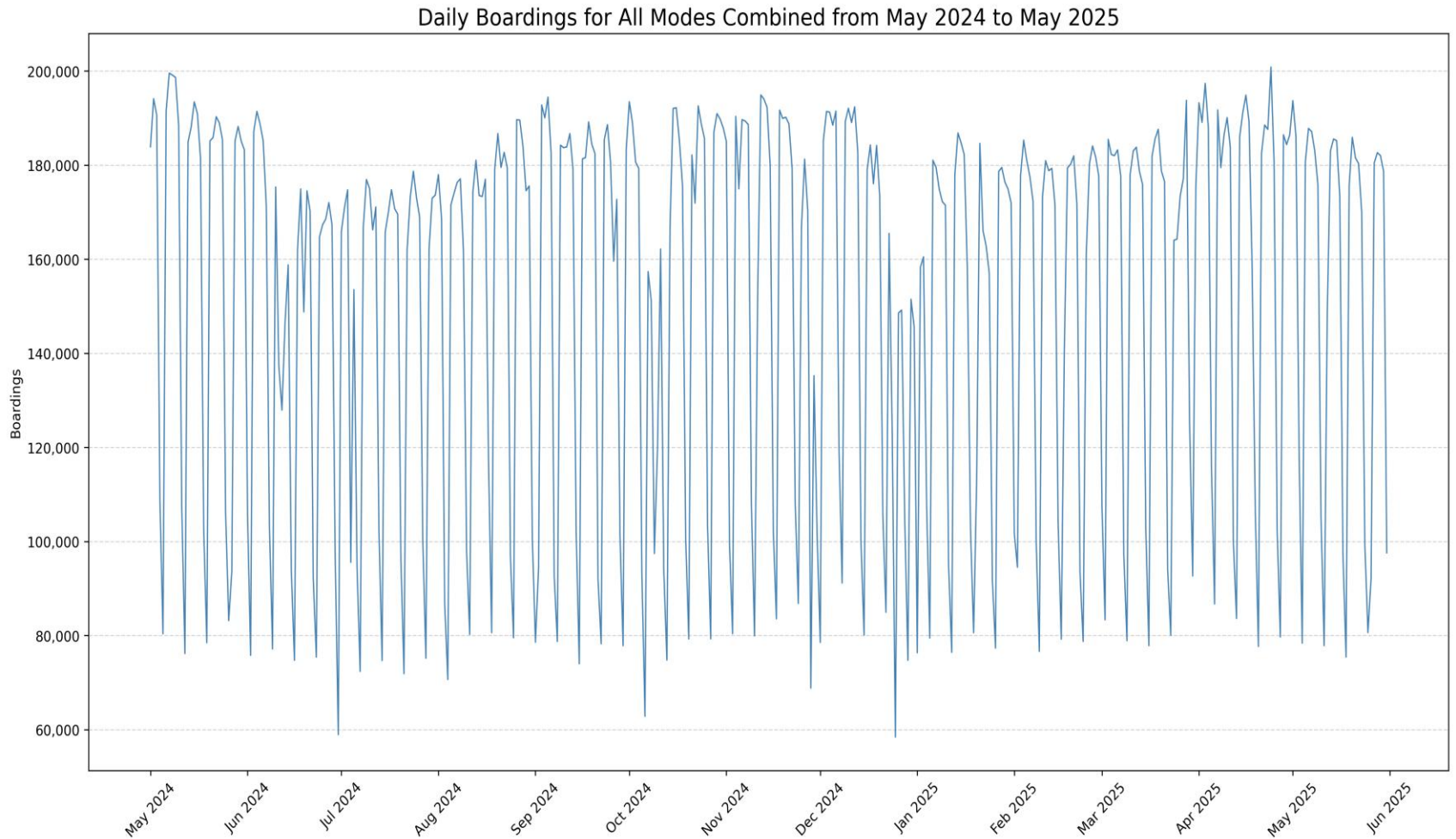


boardings



May 2025

DAILY RIDERSHIP FOR ALL MODES COMBINED



Metrobus



Better Bus Network (BBN, 11/13/2023 lineup) Bus Route Changes (Pt 1)

The listings below and on the following page are to serve as an aid in identifying individual routes for comparison of ridership data between periods prior to and following the launch of the BBN on 11/13/2023. In Nov-23, both old and new route numbers appear in data tables, since the launch took place near mid-month; beginning with Dec-23, only the current (BBN) numbering system appear in tables, to conveniently allow for direct comparisons.

BBN Route Numbering Changes:

Contracted **Route 1** was renumbered **Route 97**

Directly operated **Route 33** was renumbered **Route 103** (new, recycled number, not the same as former **Route 103 - C**)

Directly operated **Route 51** (Flagler MAX) was renumbered **Route 211** (recycled number, not the same as the OVERTOWN CIRCULATOR)

Contracted **Route 71** was renumbered **Route 107** (new, recycled number, not the same as **Route 107 - G** further below) and became directly operated

Directly operated **Route 79** was renumbered **Route 279** (79th Steet MAX)

Directly operated **Route 93** was renumbered **Route 203** (Biscayne MAX)

Directly operated **Route 99** was renumbered **Route 199**

Contracted **Route 101 - A** was renumbered **Route 15**

Directly operated **Route 102 - B** was renumbered **Route 26** (under the BBN's first phase, 07/24/2023 lineup)

Directly operated **Route 107 - G** (old, not the same as the **Route 107** appearing above) was renumbered **Route 125**

Directly operated **Route 112 - L** was renumbered **Route 79** (recycled number, not the same as the **Route 79** appearing above)

Directly operated **Route 120** was renumbered **Route 100**

Directly operated **Route 200** (CUTLER BAY LOCAL) was renumbered **Route 500** (recycled number, not the same as the **Route 500** further below)

Contracted **Route 210** was renumbered **Route 510** (SKYLAKE CIRCULATOR)

Contracted **Route 246** was renumbered **Route 401** (NORTH OWL)

Contracted **Route 248** (Princeton Circulator) was renumbered **Route 70** (recycled number, not the same as former **Route 70**)

Directly operated **Route 252** became contractor-operated, under the new name and number **Route 152**

Directly operated **Route 500** was renumbered **Route 400** (SOUTH OWL)

*The above routes, along with many others who retained their numbering, underwent modifications in various ways (realignment, new headways, days of operation, etc., some major), as part of the BBN design and its resulting lineup. Details for each DTPW Bus route are provided in the Miami-Dade County website. (Directly operated **Route 2** became contractor-operated but kept its number).*

Better Bus Network (BBN, 11/13/2023 et seq. lineups) Bus Route Changes (Pt 2)

BBN New Routes:

Two new routes with new numbering, and later two new routes with recycled numbers were created to support the Better Bus Network:

Route 14 corresponds to a newly created route

Route 57 (recycled number) corresponds to a newly created route

Route 20 corresponds to a newly created route

Route 101 (recycled number, not the same as old Route 101 A, now

Route 15) corresponds to a newly created route

BBN Eliminated Routes:

The following routes were discontinued, as part of the Better Bus Network realignments:

Route 10

Route 105 - E

Route 212 (SWEETWATER CIRCULATOR)

Route 16

Route 108 - H

Route 217 (BUNCHE PARK CIRCULATOR)

Route 19

Route 110 - J

Route 238 (EAST-WEST CONNECTION)

Route 29

Route 113 - M

Route 241 (TUTTLE LIMITED)

Route 31 (BUSWAY LOCAL)

Route 115

Route 254 (BROWNSVILLE CIRCULATOR)

Route 42

Route 119 - S

Route 267 (LUDLAM LIMITED)

Route 46 (LIBERTY CITY CONNECTION)

Route 155 (BISCAYNE GARDENS CIRCULATOR)

Route 277 (7th AVENUE MAX)

Route 57

Route 202 (LITTLE HAITI CONNECTION)

Route 286 (NORTH POINTE CIRCULATOR)

Route 82 (WESTCHESTER CIRCULATOR)

Route 297 (27th AVENUE ORANGE MAX)

Route 103 - C (old, previously used numbering, not the same as the Route 103 in the list on the previous page)

Route 211 (OVERTOWN CIRCULATOR, previously used numbering, not the same as the Route 211 in the list on the previous page)

Previously Eliminated Routes:

The following five express routes were suspended soon after the start of the SARS-CoV-2 pandemic, and never reinstated; their ridership appears in some of the tables in this report, as then-components of the reported bus system performance metrics:

Route 175 (NW MIAMI-DADE EXPRESS)

Route 195 EXPRESS – BROWARD BLVD

Route 196 EXPRESS – BROWARD BLVD-CIVIC CENTER

Route 295 EXPRESS – SHERIDAN STREET

Route 296 EXPRESS – SHERIDAN STREET-CIVIC CENTER

The preceding listings are not exhaustive, and the reader is referred to the Miami-Dade County website for further BBN details or additional changes.

Six new MetroLink routes began running in July and August 2024 as a complement to the BBN; one (Alton Rd) is now the New Route 101 (different from old Route 101 / A).

METROBUS AVERAGE WEEKDAY BOARDINGS BY ROUTE (†)

Route	Average Weekday	Average Weekday	Percent Change	Average Weekday	Percent Change	Average Weekday	Percent Change	Average Weekday	Percent Change
weekdays	May-25	Apr-25	MOM	Oct-23	MO19M	May-24	YOY	Feb-20	Current vs Feb-20
2	1,920	2,209	-13.1%	2,977	-35.5%	2,208	-13.0%	3,102	-38.1%
3	6,979	7,113	-1.9%	5,416	28.9%	8,339	-16.3%	5,137	35.9%
7	3,375	3,255	3.7%	4,021	-16.1%	3,635	-7.2%	3,501	-3.6%
8	4,465	4,474	-0.2%	4,650	-4.0%	4,910	-9.1%	3,909	14.2%
9	10,475	10,132	3.4%	6,490	61.4%	12,065	-13.2%	5,528	89.5%
10				2,443				2,482	
11	10,693	10,034	6.6%	9,621	11.1%	11,464	-6.7%	7,292	46.6%
12	2,830	2,769	2.2%	2,891	-2.1%	3,012	-6.0%	2,779	1.8%
14	981	1,021	-3.9%			953	2.9%		
15	592	612	-3.3%	178	232.6%	554	6.9%	177	234.5%
16				2,009				1,862	
17	6,297	6,001	4.9%	4,133	52.4%	7,392	-14.8%	3,878	62.4%
19				1,807				1,542	
20	2,189	2,286	-4.2%			3,850	-43.1%		
21	1,981	1,908	3.8%	2,107	-6.0%	2,268	-12.7%	1,817	9.0%
22	2,288	2,114	8.3%	4,502	-49.2%	2,515	-9.0%	3,640	-37.1%
24-CORAL WAY LIMITED	2,248	2,189	2.7%	2,195	2.4%	2,405	-6.5%	1,340	67.8%
26	2,401	2,378	1.0%	1,877	27.9%	2,445	-1.8%	1,778	35.0%
27	8,285	8,200	1.0%	7,110	16.5%	9,982	-17.0%	6,972	18.8%
29				516				534	
31- BUSWAY LOCAL								1,089	
32	2,349	2,320	1.2%	2,699	-13.0%	1,792	31.1%	2,390	-1.7%
34-EXPRESS: FLA CITY TO DADELAND SO	1,511	1,647	-8.3%	1,636	-7.6%	1,843	-18.0%	2,008	-24.8%
35	2,185	2,204	-0.8%	3,070	-28.8%	2,429	-10.0%	2,421	-9.7%
36	6,051	6,198	-2.4%	2,645	128.8%	6,392	-5.3%	2,536	138.6%
37	4,356	4,411	-1.3%	3,475	25.4%	4,633	-6.0%	3,273	33.1%
38-TRANSITWAY MAX	5,562	5,041	10.3%	5,714	-2.7%	7,453	-25.4%	6,361	-12.6%
39-TRANSITWAY EXPRESS	901	853	5.6%	742	21.4%	816	10.4%	893	0.9%
40	1,641	1,634	0.4%	2,344	-30.0%	2,002	-18.0%	1,772	-7.4%
42				1,001				820	
46- LIBERTY CITY CONN.				22				41	
52	1,529	1,511	1.2%	1,390	10.0%	1,737	-12.0%	1,261	21.3%
54	2,662	2,599	2.4%	3,086	-13.7%	2,927	-9.1%	2,940	-9.5%
56	260	286	-9.1%	391	-33.5%	558	-53.4%	354	-26.6%
57				522				433	
new 57	183	201	-9.0%						
62-HIALEAH-BISC BLVD VIA 62 ST	2,572	2,397	7.3%	2,496	3.0%	2,952	-12.9%	1,815	41.7%
70	275	281	-2.1%	161	70.8%	302	-8.9%	135	103.7%

(†) In this table and those which follow, "YOY" stands for "year-over-year", "MOM" for "month-over-month" and, e.g., "MOZM" for "month over Z months", i.e., current month vs 12 months prior, one month prior, and compared to pre-BBN, respectively. The Feb-20 numbers serve as a pre-pandemic benchmark. To see which routes are fully or partly operated under contract this month, please refer to the ranking table further in the Metrobus portion of this document.

METROBUS AVERAGE WEEKDAY BOARDINGS BY ROUTE

Route	Average Weekday	Average Weekday	Percent Change	Average Weekday	Percent Change	Average Weekday	Percent Change	Average Weekday	Percent Change
weekdays	May-25	Apr-25	MOM	Oct-23	MO19M	May-24	YOY	Feb-20	Current vs Feb-20
72	892	944	-5.5%	670	33.1%	952	-6.3%	781	14.2%
73	1,244	1,302	-4.4%	2,868	-56.6%	1,437	-13.4%	2,124	-41.4%
75	2,728	2,609	4.6%	1,594	71.1%	3,172	-14.0%	1,429	90.9%
77	9,817	9,300	5.6%	9,959	-1.4%	12,434	-21.0%	7,129	37.7%
79	8,011	7,926	1.1%	8,481	-5.5%	7,981	0.4%	7,636	4.9%
82- WESTCHESTER CIRC				61				62	
87	1,959	2,054	-4.6%	1,924	1.8%	2,483	-21.1%	1,499	30.7%
88	1,840	1,831	0.5%	2,419	-23.9%	2,032	-9.4%	2,076	-11.4%
95-EXPRESS GOLDEN GLADES	1,484	1,262	17.6%	1,195	24.2%	1,381	7.5%	2,893	-48.7%
97	190	207	-8.2%	225	-15.6%	227	-16.3%	184	3.3%
100	15,070	15,148	-0.5%	6,128	145.9%	14,955	0.8%	6,667	126.0%
new 101	733	694	5.6%						
103- C								463	
103	1,676	1,665	0.7%	1,967	-14.8%	2,340	-28.4%	1,687	-0.7%
104	1,071	1,081	-0.9%	1,024	4.6%	1,234	-13.2%	837	28.0%
105- E				1,402				1,287	-100.0%
107	1,732	1,917	-9.6%	825	109.9%	2,143	-19.2%	711	143.6%
108- H				487				473	
110- J				2,955				2,508	
113- M				887				866	
115				151				180	
119- S				9,588				8,970	
125	4,164	4,319	-3.6%	2,009	107.3%	4,844	-14.0%	1,713	143.1%
132-TRI-RAIL DORAL SHUTTLE	49	41	19.5%	37	32.4%	42	16.7%	16	206.3%
135	1,928	1,880	2.6%	1,755	9.9%	2,141	-9.9%	1,399	37.8%
136	144	149	-3.0%	162	-11.1%	164	-12.2%	126	14.3%
137- WEST DADE CONNECTION	1,977	2,098	-5.8%	2,119	-6.7%	2,523	-21.6%	1,626	21.6%
150- MIAMI BEACH AIRPORT EXPRESS	1,446	1,553	-6.9%	2,149	-32.7%	1,530	-5.5%	1,867	-22.5%
152	359	366	-1.9%	1,051	-65.8%	402	-10.7%	851	-57.8%
155- BISCAYNE GARDENS CIRC				45				44	
175- NW MIAMI-DADE EXPRESS								33	
183	4,534	4,555	-0.5%	3,653	24.1%	5,419	-16.3%	3,149	44.0%
199	1,890	1,794	5.3%	1,899	-0.5%	2,159	-12.5%	1,473	28.3%
202- LITTLE HAITI CONN				110				140	
203- BISCAYNE MAX	891	822	8.4%	3,666	-75.7%	1,257	-29.1%	3,334	-73.3%

METROBUS AVERAGE WEEKDAY BOARDINGS BY ROUTE

Route	Average Weekday	Average Weekday	Percent Change	Average Weekday	Percent Change	Average Weekday	Percent Change	Average Weekday	Percent Change
weekdays	May-25	Apr-25	MOM	Oct-23	MO19M	May-24	YOY	Feb-20	Current vs Feb-20
204 KILLIAN MAX	597	554	7.8%	620	-3.7%	622	-11.0%	1,071	-44.3%
207 (7th St)- LITTLE HAVANA CONN	1,610	1,337	20.4%	1,819	-11.5%	1,655	-19.2%	1,489	8.1%
208 (8th St)- LITTLE HAVANA CONN	1,735	1,544	12.4%	1,659	4.6%	1,585	-2.6%	1,308	32.6%
211 OVERTOWN CIRCULATOR				71				58	
211 -FLAGLER MAX	1,563	1,598	-2.2%	3,824	-59.1%	1,628	-1.9%	3,109	-49.7%
212- SWEETWATER CIRC				22				15	
217- BUNCHE PARK CIRC				80				97	
238- EAST/WEST CONN				593				449	
241 TUTTLE LIMITED				348					
254- BROWNSVILLE CIRC				5				19	
267- LUDLAM LIMITED				162				149	
272 SUNSET MAX (*)	328	370	-11.4%	428	-23.4%	409	-9.5%	550	-40.4%
277- 7TH AVENUE MAX				879				683	
279- 79 STREET MAX	674	692	-2.5%	469	43.7%	636	8.7%	361	86.7%
286- NORTH POINTE CIRC				93				97	
287- SAGA BAY MAX	313	285	9.7%	341	-8.2%	439	-35.0%	358	-12.6%
288 KENDALL MAX	485	470	3.2%	372	30.4%	487	-3.5%	762	-36.4%
297-27th AVENUE ORANGE MAX				1,229				1,356	
301-DADE MONROE EXPRESS	1,443	1,459	-1.1%	955	51.1%	1,027	42.1%	841	71.6%
302- CARD SOUND EXPRESS	114	126	-9.5%	91	25.3%	104	21.2%	86	32.6%
338- WEEKEND EXXPRESS									
344	149	165	-9.7%	76	96.1%	131	26.0%	96	55.2%
400- SOUTH OWL	89	66	34.0%	71	25.4%	84	-21.0%	81	9.9%
401- NORTH OWL	62	68	-8.8%	61	1.6%	63	7.9%	94	-34.0%
500 - CUTLER BAY LOCAL	169	158	6.7%	176	-4.0%	278	-43.0%	158	7.0%
510 - SKYLAKE CIRCULATOR (*)	326	426	-23.5%	471	-30.8%	462	-7.8%	282	15.6%
836 EXPRESS	330	310	6.4%	247	33.6%	317	-2.1%		
837 EXPRESS	246	241	2.1%	195	26.2%	214	12.6%		
MetroLink NoMi West	304	315	-3.5%						
MetroLink North Miami		224	-100.0%						
MetroLink LeJeune		72	-100.0%						
MetroLink Killian Parkway									
MetroLink Alton Road									
MetroLink Opa-Locka									
AHEPA SHUTTLE	19	28	-32.1%	18	5.6%	20	40.0%	21	-9.5%
FEDERATION GARDEN S SHUTTLE									
GREEN HILLS SHUTTLE	9	6	50.0%	5	80.0%	7	28.6%	9	0.0%
KING S CREEK SHUTTLE	9	8	12.5%	14	-35.7%	10	-10.0%	13	-30.8%
MEEK / MARQUES S SHUTTLE	21	12	75.0%						
ROBERT SHARP SHUTTLE	37	33	12.1%	23	60.9%	30	10.0%	10	270.0%
SIERRA LAKES SHUTTLE	18	21	-14.3%	16	12.5%	20	5.0%	45	-60.0%
Total	176,515	174,382	1.2%	184,565	-4.4%	197,313	-10.5%	166,931	5.7%

(1) Includes shuttles and those routes which were not run some years.

(2) Several express routes were suspended beginning at the end of Mar-20, due to the SARS-CoV-2 pandemic, while other routes had alignment and schedule modifications made to them, in an ongoing effort to optimize service delivery.

METROBUS AVERAGE SATURDAY BOARDINGS BY ROUTE

Route	Average Saturday	Average Saturday	Percent Change	Average Saturday	Percent Change	Average Saturday	Percent Change	Average Saturday	Percent Change
Saturdays	May-25	Apr-25	MOM	Oct-23	MO19M	May -24	YOY	Feb-20	Current vs Feb-20
2	948	1,057	-10.3%	1,605	-40.9%	1,051	-9.8%	1,616	-41.3%
3	4,753	5,461	-13.0%	5,754	-17.4%	6,137	-22.6%	5,229	-9.1%
7	1,907	1,971	-3.3%	1,972	-3.3%	1,994	-4.4%	1,887	1.1%
8	2,188	2,263	-3.3%	2,334	-6.3%	2,369	-7.6%	2,027	7.9%
9	6,795	6,405	6.1%	3,677	84.8%	7,152	-5.0%	3,034	124.0%
10				2,107				1,896	
11	7,205	7,088	1.7%	5,787	24.5%	8,028	-10.3%	5,182	39.0%
12	1,470	1,519	-3.2%						
14	732	795	-7.9%			776	-5.7%		
15	482	538	-10.4%	93	418.3%	338	42.6%	71	578.9%
16				1,662				1,566	
17	3,949	3,702	6.7%	2,553	54.7%	4,762	-17.1%	2,363	67.1%
20	1,826	1,937	-5.7%			2,957	-38.2%		
21	1,171	1,094							
22	1,300	1,392	-6.6%	2,425	-46.4%	1,462	-11.1%	2,084	-37.6%
24- CORAL WAY LIMITED	1,493	1,435	4.0%	1,400	6.6%	1,733	-13.8%	1,165	28.2%
26	1,097	1,133	-3.2%	966	13.6%	1,356	-19.1%	851	28.9%
27	4,948	5,075	-2.5%	4,006	23.5%	5,766	-14.2%	4,034	22.7%
31-BUSWAY LOCAL								896	
32	1,409	1,342	5.0%	1,261	11.7%	1,159	21.6%	1,029	36.9%
35	1,450	1,453		1,540		1,658	-12.5%	1,372	5.7%
36	4,394	4,636	-5.2%	1,677	162.0%	4,822	-8.9%	1,289	240.9%
37	2,795	2,726	2.5%	2,062	35.5%	3,162	-11.6%	2,090	33.7%
38 TRANSITWAY MAX	3,820	3,435	11.2%	6,328	-39.6%	6,000	-36.3%	4,715	-19.0%
40	914	964	-5.2%	926	-1.3%	1,141	-19.9%	655	39.5%
42				617				552	
52	1,023	981	4.2%	694	47.4%	1,042	-1.8%	686	49.1%
54	1,753	1,833	-4.4%	1,925	-8.9%	1,776	-1.3%	1,727	1.5%
56	94	102	-7.8%			271	-65.3%		
new 57	78	76	2.6%						
62	1,667	1,646	1.3%	1,823	-8.6%	1,834	-9.1%	1,343	24.1%
70	191	199	-4.0%			202	-5.4%		
72	565	605	-6.6%	357	58.3%	521	8.4%	350	61.4%
73	474	494	-4.1%	1,202	-60.6%	602	-21.3%	860	-44.9%
75	1,818	1,762	3.2%	550	230.5%	2,016	-9.8%	468	288.5%
77	6,488	6,206	4.5%	5,510	17.7%	7,658	-15.3%	4,197	54.6%
79	6,134	6,470	-5.2%	7,094	-13.5%	6,759	-9.2%	5,667	8.2%
82 - WESTCHESTER CIRC				38				50	
87	883	931	-5.1%	532	66.0%	988	-10.6%	402	119.7%

METROBUS AVERAGE SATURDAY BOARDINGS BY ROUTE

Route	Average Saturday	Average Saturday	Percent Change	Average Saturday	Percent Change	Average Saturday	Percent Change	Average Saturday	Percent Change
Saturdays	May-25	Apr-25	MOM	Oct-23	MO19M	May -24	YOY	Feb-20	Current vs Feb-20
88	1,466	1,383	6.0%	1,661	-11.7%	1,543	-5.0%	1,620	
97	170	155	9.7%	163	4.3%	183	-7.1%	215	-20.9%
100	11,861	11,638	1.9%	5,637	110.4%	14,865	-20.2%	4,744	150.0%
103- C								315	
103	1,072	1,132	-5.3%	1,239	-13.5%	1,312	-18.3%	951	12.7%
104	634	550	15.2%	445	42.5%	814	-22.1%	468	35.5%
105- E				772				619	
107	1,101	1,098	0.3%	238	362.6%	1,379	-20.2%	252	336.9%
108- H				401				372	
110- J				1,394				1,952	
113- M				577				503	
115				80				82	
119- S				8,118				6,861	
125	2,716	2,641	2.8%	1,297	109.4%	3,202	-15.2%	1,066	154.8%
135	937	915	2.4%	556	68.5%	893	4.9%	539	73.8%
137- WEST DADE CONNECTION	1,338	1,352	-1.0%	1,337	0.1%	1,545	-13.4%	1,027	30.3%
150- MIAMI BEACH AIRPORT EXPRESS	1,327	1,518	-12.6%	2,161	-38.6%	1,619	-18.0%	1,604	-17.3%
152		237	-100.0%	375	-100.0%	248	-100.0%	302	-100.0%
183	2,756	2,771	-0.5%	1,960	40.6%	3,180	-13.3%	1,790	54.0%
199	1,397	1,322	5.7%	1,106	26.3%	1,301	7.4%	849	64.5%
202- LITTLE HAITI CONN				22				50	
207 (7th St)- LITTLE HAVANA CONN	693	711	-2.5%	929	-25.4%	794	-12.7%	1,032	-32.8%
208 (8th St)- LITTLE HAVANA CONN	804	676	19.0%	1,030	-21.9%	962	-16.4%	1,044	-23.0%
241 TUTTLE LIMITED				222					
301-DADE MONROE EXPRESS	1,526	1,506	1.3%	885	72.4%	949	60.8%	801	90.5%
302- CARD SOUND EXPRESS	141	168	-16.1%	94	50.0%	106	33.0%	57	147.4%
338- WEEKEND EXPRESS	149	159	-6.3%	259	-42.5%	176	-15.3%	237	-37.1%
344	95	92	3.3%			69	37.7%		
400- SOUTH OWL	40	91	-56.2%	104	-61.5%	94	-57.4%	70	-42.9%
401- NORTH OWL	61	68	-10.3%	61	0.0%	64	-4.7%	84	-27.4%
500 - CUTLER BAY LOCAL	167	127	31.6%	152	9.9%	245	-31.8%	119	40.3%
510 - SKYLAKE CIRCULATOR (*)	128	138	-7.2%	217	-41.0%	293	-56.3%	165	-22.4%
12/21 WEEKEND INTERLINE				3,290		3,022		2,528	
FEDERATION GARDEN S SHUTTLE	23	27	-14.8%	20	15.0%	31	-25.8%	28	-17.9%
Total	108,816	109,199	-0.4%	107,279	1.4%	126,381	-13.9%	93,699	16.1%

METROBUS AVERAGE SUNDAY BOARDINGS BY ROUTE

Route	Average Sunday	Average Sunday	Percent Change	Average Sunday	Percent Change	Average Sunday	Percent Change	Average Sunday	Percent Change
Sundays	May-25	Apr-25	MOM	Oct-23	MO19M	May-24	YOY	Feb-20	Current vs Feb-20
2	763	784	-2.7%	1,214	-37.1%	823	-7.3%	1,335	-42.8%
3	4,337	4,571	-5.1%	4,408	-1.6%	5,053	-14.2%	4,353	-0.4%
7	1,541	1,449	6.4%	1,632	-5.6%	1,489	3.5%	1,654	-6.8%
8	1,456	1,454	0.2%	1,838	-20.8%	1,746	-16.6%	1,746	-16.6%
9	4,769	4,518	5.6%	2,756	73.0%	5,257	-9.3%	2,549	87.1%
10				1,632				1,441	
11	5,182	5,401	-4.1%	3,803	36.3%	5,753	-9.9%	3,917	32.3%
12	1,174	1,176							
14	743	764				871	-14.7%		
15	461	531	-13.2%	53	769.8%	312	47.8%	56	723.2%
16				1,023				997	
17	2,657	2,876	-7.6%	1,920	38.4%	3,135	-15.2%	1,833	45.0%
20	1,313	1,407	-6.7%			2,290	-42.7%		
21	899	964							
22	873	889	-1.8%	1,915	-54.4%	1,157	-24.5%	1,548	-43.6%
24- CORAL WAY LIMITED	996	1,051	-5.3%	1,108	-10.1%	1,156	-13.8%	905	10.1%
26	842	890	-5.4%	871	-3.3%	1,016	-17.1%	717	17.4%
27	2,611	2,859	-8.7%	3,146	-17.0%	3,882	-32.7%	2,918	-10.5%
31-BUSWAY LOCAL								715	
32	1,094	1,052	4.0%	768	42.4%	843	29.8%	772	41.7%
35	1,191	1,211		1,175		1,364	-12.7%	942	26.4%
36	3,505	3,752	-6.6%	1,160	202.2%	3,889	-9.9%	1,111	215.5%
37	1,993	1,677	18.9%	1,755	13.6%	2,275	-12.4%	1,739	14.6%
38 TRANSITWAY MAX	3,319	3,097	7.2%	4,957	-33.0%	4,691	-29.2%	4,147	-20.0%
40	622	654	-4.9%	542	14.8%	753	-17.4%	447	39.1%
42				425				416	
52	755	829	-8.9%	496	52.2%	964	-21.7%	466	62.0%
54	1,181	1,130	4.6%	1,181	0.0%	1,222	-3.4%	1,171	0.9%
62	1,117	1,031	8.4%	1,040	7.4%	1,265	-11.7%	891	25.4%
70	178	185	-3.8%			158	12.7%		
72	399	464	-14.0%	259	54.1%	395	1.0%	265	50.6%
73	221	226	-2.1%	602	-63.3%	231	-4.3%	495	-55.4%
75	1,248	1,345	-7.2%	352	254.5%	1,495	-16.5%	271	360.5%
77	3,984	3,802	4.8%	3,980	0.1%	4,994	-20.2%	2,815	41.5%
79	4,789	4,918	-2.6%	4,837	-1.0%	5,640	-15.1%	4,804	-0.3%
87	482	468	3.0%	362	33.1%	532	-9.4%	319	51.1%

METROBUS AVERAGE SUNDAY BOARDINGS BY ROUTE

Route	Average Sunday	Average Sunday	Percent Change	Average Sunday	Percent Change	Average Sunday	Percent Change	Average Sunday	Percent Change
Sundays	May-25	Apr-25	MOM	Oct-23	MO19M	May-24	YOY	Feb-20	Current vs Feb-20
88	1,054	1,053	0.1%	1,255	-16.0%	1,113	-5.3%	1,286	-18.0%
97	126	155	-18.7%	149	-15.4%	146	-13.7%	201	-37.3%
100	8,844	9,692	-8.7%	3,492	153.3%	10,134	-12.7%	3,469	154.9%
103- C								212	
103	697	700	-0.4%	729	-4.4%	906	-23.1%	607	14.8%
104	415	428	-3.1%	348	19.3%	639	-35.1%	317	30.9%
105- E				634				616	
107	812	901	-9.9%	187	334.2%	1,167	-30.4%	162	401.2%
108- H				363				328	
110 - J				1,699				1,638	
113 - M				444				431	
115				66				80	
119 - S				7,612				7,141	
125	1,972	1,918	2.8%	1,036	90.3%	2,041	-3.4%	895	120.3%
135	583	710	-17.9%	474	23.0%	708	-17.7%	349	67.0%
137- WEST DADE CONNECTION	940	967	-2.8%	956	-1.7%	1,121	-16.1%	879	6.9%
150- MIAMI BEACH AIRPORT EXPRESS	1,150	1,381	-16.8%	1,966	-41.5%	1,405	-18.1%	1,574	-26.9%
152	148	138	7.2%	331	-55.3%	171	-13.5%	199	-25.6%
183	1,928	1,899	1.5%	1,569	22.9%	2,122	-9.1%	1,413	36.4%
199	1,000	995	0.5%	887	12.7%	1,090	-8.3%	658	52.0%
202- LITTLE HAITI CONN				21				39	
207 (7th St)- LITTLE HAVANA CONN	554	574	-3.5%	648	-14.5%	539	2.8%	796	-30.4%
208 (8th St)- LITTLE HAVANA CONN	700	781	-10.4%	862	-18.8%	754	-7.2%	911	-23.2%
241 TUTTLE LIMITED				187					
301-DADE MONROE EXPRESS	1,368	1,357	0.8%	867	57.8%	881	55.3%	751	82.2%
302- CARD SOUND EXPRESS	112	110	1.8%	72	55.6%	96	16.7%	57	96.5%
338- WEEKEND EXPRESS	154	158	-2.5%	247	-37.7%	131	17.6%	252	-38.9%
400- SOUTH OWL	81	45	79.2%	70	15.7%	85	-4.7%	83	-2.4%
401- NORTH OWL	53	71	-25.4%	65	-18.5%	71	-25.4%	87	-39.1%
500 - CUTLER BAY LOCAL	82	62	33.3%	86	-4.7%	93	-11.8%	59	39.0%
510 - SKYLAKE CIRCULATOR (*)	123	111	10.8%	194	-36.6%	302	-59.3%	143	-14.0%
12/21 WEEKEND INTERLINE				2,700		2,407		2,048	
Total	79,591	81,629	-2.5%	81,426	-2.3%	92,773	-14.2%	75,436	5.5%

METROBUS TOTAL MONTHLY BOARDINGS BY ROUTE

Route	Total Month	Total Month	Percent Change	Total Month	Percent Change	Total Month	Percent Change	Total Month	Percent Change
total month	May-25	Apr-25	MOM	Oct-23	M019M	May-24	YOY	Feb-20	Current vs Feb-20
2	50,032	55,952	-10.6%	77,976	-35.8%	56,887	-12.1%	75,463	-33.7%
3	199,583	203,383	-1.9%	164,203	21.5%	243,965	-18.2%	146,294	36.4%
7	89,951	90,146	-0.2%	104,507	-13.9%	109,489	-17.8%	86,077	4.5%
8	122,383	120,561	1.5%	120,821	1.3%	132,773	-7.8%	95,295	28.4%
9	284,498	275,249	3.4%	171,265	66.1%	321,608	-11.5%	135,924	109.3%
10				70,338				64,874	
11	296,947	285,188	4.1%	253,837	17.0%	313,091	-5.2%	187,425	58.4%
12	74,304	73,182	1.5%	63,603	16.8%	66,266	12.1%	55,585	33.7%
14	28,446	30,467	-6.6%			28,413	0.1%		
15	17,300	17,746	-2.5%	4,545	280.6%	15,901	8.8%	4,114	320.5%
16				55,959				49,061	
17	172,747	163,091	5.9%	110,727	56.0%	197,352	-12.5%	96,715	78.6%
19				39,745				30,847	
20	63,798	66,318	-3.8%			107,968	-40.9%		
21	53,031	51,683	2.6%	46,355	14.4%	49,094	8.0%	36,341	45.9%
22	60,325	56,831	6.1%	118,329	-49.0%	66,961	-9.9%	89,404	-32.5%
24-CORAL WAY LIMITED	63,008	61,869	1.8%	59,432	6.0%	65,619	-4.0%	36,237	73.9%
26	61,676	62,946	-2.0%	49,521	24.5%	64,302	-4.1%	42,683	44.5%
27	226,623	223,349	1.5%	188,160	20.4%	262,086	-13.5%	171,282	32.3%
29				11,342				10,684	
31- BUSWAY LOCAL								29,125	
32	63,276	62,392	1.4%	68,263	-7.3%	48,286	31.0%	56,027	12.9%
34-EXPRESS: FLA CITY TO DADELAND SO	39,487	41,305	-4.4%	36,002	9.7%	40,539	-2.6%	40,159	-1.7%
35	60,694	61,145	-0.7%	79,573	-23.7%	66,889	-9.3%	59,041	2.8%
36	169,113	173,775	-2.7%	70,698	139.2%	179,363	-5.7%	61,606	174.5%
37	118,495	119,003	-0.4%	93,471	26.8%	125,949	-5.9%	82,870	43.0%
38-TRANSITWAY MAX	173,298	159,263	8.8%	175,803	-1.4%	211,416	-18.0%	167,379	3.5%
39-TRANSITWAY EXPRESS	22,182	19,916	11.4%	16,333	35.8%	17,956	23.5%	17,853	24.2%
40	43,166	44,458	-2.9%	57,992	-25.6%	52,369	-17.6%	40,497	6.6%
42				26,611				20,825	
46- LIBERTY CITY CONN.				477				814	
52	42,415	41,779	1.5%	35,844	18.3%	47,207	-10.2%	30,522	39.0%
54	72,197	72,209	0.0%	81,490	-11.4%	77,604	-7.0%	72,125	0.1%
56	6,195	6,699	-7.5%	8,598	-27.9%	13,352	-53.6%	7,071	-12.4%
57				11,491				8,665	
new 57	4,437	4,720	-6.0%						
62-HIALEAH-BISC BLVD VIA 62 ST	69,658	66,456	4.8%	67,398	3.4%	78,598	-11.4%	46,582	49.5%
70	7,712	7,722	-0.1%	3,546	117.5%	8,247	-6.5%	2,690	186.7%

METROBUS TOTAL MONTHLY BOARDINGS BY ROUTE

Route	Total Month	Total Month	Percent Change	Total Month	Percent Change	Total Month	Percent Change	Total Month	Percent Change
total month	May-25	Apr-25	MOM	Oct-23	MO19M	May-24	YOY	Feb-20	Current vs Feb-20
72	24,052	25,038	-3.9%	17,459	37.8%	25,006	-3.8%	18,433	30.5%
73	30,622	32,345	-5.3%	70,903	-56.8%	35,177	-12.9%	48,767	-37.2%
75	75,031	76,385	-1.8%	39,021	92.3%	85,321	-12.1%	31,994	134.5%
77	267,223	258,274	3.5%	261,039	2.4%	329,149	-18.8%	174,833	52.8%
79	226,251	224,189	0.9%	239,146	-5.4%	230,808	-2.0%	200,268	13.0%
82- WESTCHESTER CIRC		1,488		1,488				1,482	
87	49,433	51,935	-4.8%	46,254	6.9%	61,231	-19.3%	33,273	48.6%
88	52,038	51,762	0.5%	66,138	-21.3%	56,435	-7.8%	54,772	-5.0%
95-EXPRESS GOLDEN GLADES	33,623	33,267	1.1%	26,295	27.9%	30,395	10.6%	57,860	-41.9%
97	5,590	5,797	-3.6%	6,337	-11.8%	6,455	-13.4%	5,558	0.6%
100	427,020	431,792	-1.1%	174,819	144.3%	439,147	-2.8%	170,942	149.8%
new 101	16,133	16,481	-2.1%						
103- C								11,682	
103	45,028	45,156	-0.3%	51,871	-13.2%	61,251	-26.5%	40,918	10.0%
104	28,389	29,609	-4.1%	26,049	9.0%	33,592	-15.5%	20,351	39.5%
105- E				37,092				31,302	-100.0%
107	47,612	52,378	-9.1%	20,040	137.6%	58,490	-18.6%	16,118	195.4%
108- H				14,133				12,624	
110 - J				79,080				66,481	
113 - M				24,040				21,548	
115				3,968				4,334	
119 - S				281,456				242,257	
125	115,030	116,392	-1.2%	56,547	103.4%	129,573	-11.2%	43,178	166.4%
132-TRI-RAIL DORAL SHUTTLE	1,081	1,012	6.8%	804	34.5%	921	17.4%	312	246.5%
135	49,910	49,434	1.0%	43,211	15.5%	54,224	-8.0%	32,067	55.6%
136	3,158	3,484	-9.4%	3,557	-11.2%	3,598	-12.2%	2,524	25.1%
137- WEST DADE CONNECTION	60,027	60,160	-0.2%	56,750	5.8%	67,300	-10.8%	41,167	45.8%
150- MIAMI BEACH AIRPORT EXPRESS	43,307	47,720	-9.2%	65,763	-34.1%	47,153	-8.2%	51,651	-16.2%
152	9,421	9,547	-1.3%	26,285	-64.2%	10,691	-11.9%	19,325	-51.2%
155- BISCAYNE GARDENS CIRC				985				881	
175- NW MIAMI-DADE EXPRESS								661	
183	121,413	122,072	-0.5%	96,050	26.4%	142,542	-14.8%	77,570	56.5%
199	52,675	50,905	3.5%	50,634	4.0%	58,143	-9.4%	36,325	45.0%
202- LITTLE HAITI CONN				2,620				3,200	
203- BISCAYNE MAX	19,593	20,267	-3.3%	80,650	-75.7%	27,657	-29.2%	66,684	-70.6%

METROBUS TOTAL MONTHLY BOARDINGS BY ROUTE

Route	Total Month	Total Month	Percent Change	Total Month	Percent Change	Total Month	Percent Change	Total Month	Percent Change
total month	May-25	Apr-25	MOM	Oct-23	MO19M	May-24	YOY	Feb-20	Current vs Feb-20
204 KILLIAN MAX	13,140	12,670	3.7%	13,632	-3.6%	13,689	-4.0%	21,418	-38.6%
207 (7th St)- LITTLE HAVANA CONN	41,097	37,335	10.1%	46,970	-12.5%	42,278	-2.8%	38,127	7.8%
208 (8th St)- LITTLE HAVANA CONN	45,126	42,043	7.3%	44,922	0.5%	42,493	6.2%	35,018	28.9%
211 OVERTOWN CIRCULATOR				1,567				1,159	
211 -FLAGLER MAX	37,246	36,246	2.8%	84,135	-55.7%	35,813	4.0%	62,186	-40.1%
212- SWEETWATER CIRC				494				295	
217- BUNCHE PARK CIRC				1,759				1,949	
238- EAST/WEST CONN				13,036				8,987	
241 TUTTLE LIMITED				9,471					
254- BROWNSVILLE CIRC				105				384	
267- LUDLAM LIMITED				3,567				2,978	
272 SUNSET MAX (*)	7,207	8,129	-11.3%	9,423	-23.5%	9,006	-20.0%	11,004	-34.5%
277- 7TH AVENUE MAX				19,345				13,669	
279- 79 STREET MAX	14,830	15,467	-4.1%	10,318	43.7%	13,983	6.1%	7,228	105.2%
286- NORTH POINTE CIRC				2,279				2,145	
287- SAGA BAY MAX	6,892	6,509	5.9%	7,499	-8.1%	9,660	-28.7%	7,160	-3.7%
288 KENDALL MAX	10,680	10,699	-0.2%	8,189	30.4%	10,721	-0.4%	15,249	-30.0%
297-27th AVENUE ORANGE MAX				27,047				27,125	
301-DADE MONROE EXPRESS	44,861	43,539	3.0%	28,889	55.3%	30,799	45.7%	23,838	88.2%
302- CARD SOUND EXPRESS	3,667	3,883	-5.6%	2,728	34.4%	3,196	14.7%	2,236	64.0%
338- WEEKEND EXPRESS	1,358	1,390		2,274		1,357	0.1%	2,191	
344	3,743	3,988	-6.1%	1,666	124.7%	3,151	18.8%	1,919	95.0%
400- SOUTH OWL	2,751	2,526	8.9%	2,324	18.4%	2,639	4.2%	2,301	19.6%
401- NORTH OWL	1,883	2,052	-8.2%	1,899	-0.8%	2,690	-30.0%	2,641	-28.7%
500 - CUTLER BAY LOCAL	4,886	4,719	3.5%	4,907	-0.4%	7,567	-35.4%	3,984	22.6%
510 - SKYLAKE CIRCULATOR (*)	8,293	10,361	-20.0%	12,211	-32.1%	12,839	-35.4%	7,033	17.9%
836 EXPRESS	7,254	7,513	-3.4%	5,428	33.6%	6,977	4.0%		
837 EXPRESS	5,423	5,791	-6.4%	4,281	26.7%	4,703	15.3%		
MetroLink NoMi West	6,694	6,929	-3.4%						
MetroLink North Miami		4,933	-100.0%						
MetroLink LeJeune		1,592	-100.0%						
MetroLink Killian Parkway									
MetroLink Alton Road									
MetroLink Opa-Locka									
AHEPA SHUTTLE	94	110	-14.5%	71	32.4%	100	-6.0%	83	13.3%
FEDERATION GARDEN S SHUTTLE	116	109	6.4%	80		125	-7.2%	142	
GREEN HILLS SHUTTLE	26	23	13.0%	26	0.0%	21	23.8%	36	-27.8%
KING S CREEK SHUTTLE	45	33	36.4%	55	-18.2%	49		52	-13.5%
MEEK / MARQUES S SHUTTLE	84	59	42.4%						
ROBERT SHARP SHUTTLE	148	163	-9.2%	92	60.9%	151	-2.0%	38	289.5%
SIERRA LAKES SHUTTLE	92	83	10.8%	62	48.4%	101	-8.9%	180	-48.9%
Total	4,828,273	4,804,586	0.5%	4,912,151	-1.7%	5,308,711	-9.0%	4,123,083	17.1%

BUS RIDERSHIP BY ROUTE SERVICE COMPARISON (MONTH-OVER-MONTH)

Boardings by Service Type and Route	Average Weekday	Average Weekday	Percent Change	Average Saturday	Average Saturday	Percent Change	Average Sunday	Average Sunday	Percent Change	Total Monthly	Total Monthly	Percent Change
	May-25	Apr-25	MOM	May-25	Apr-25	MOM	May-25	Apr-25	MOM	May-25	Apr-25	MOM
Directly Operated Express Routes												
34 TRANSITWAY EXPRESS	1,511	1,647	-8.26%							39,487	41,305	-4.40%
39 TRANSITWAY EXPRESS	901	853	5.63%							22,182	19,916	11.38%
95-EXPRESS GOLDEN GLADES	1,484	1,262	17.59%							33,623	33,267	1.07%
150-MIAMI BEACH AIRPORT EXPRESS	1,446	1,553	-6.89%	1,327	1,518	-12.58%	1,150	1,381	-16.73%	43,307	48,620	-10.93%
338 - WEEKEND EXPRESS				149	159	-6.29%	154	158	-2.53%	1,358	1,390	-2.30%
836 EXPRESS	330	310	6.45%							7,254	7,513	-3.45%
837 EXPRESS	246	241	2.07%							5,423	5,791	-6.35%
Subtotal Express Routes	5,918	5,866	0.89%	1,476	1,677	-11.99%	1,304	1,539	-15.27%	152,634	157,802	-3.27%
Percentage of All Bus Routes	3.20%	3.20%		1.30%	1.30%		1.70%	1.80%		2.90%	2.80%	3.57%
Contracted Routes - Local Service (*)												
2	1,920	2,209	-13.08%	948	1,057	-10.31%	763	784	-2.68%	50,032	55,952	-10.58%
15	592	612	-3.27%	482	538	-10.41%	461	531	-13.18%	17,300	17,746	-2.51%
29												
46 - LIBERTY CITY CONN.												
56	260	286	-9.09%	94	102	-7.84%				6,195	6,699	-7.52%
new 57	183	201	-8.96%	78	76	2.63%				4,437	4,720	-6.00%
70	275	281	-2.14%	191	199	-4.02%	178	185	-3.78%	7,712	7,722	-0.13%
72	892	944	-5.51%	565	605	-6.61%	399	464	-14.01%	24,052	25,038	-3.94%
82 - WESTCHESTER CIRC												
97	190	207	-8.21%	170	155	9.68%	126	155	-18.71%	5,590	5,797	-3.57%
115												
152	359	366	-1.91%	0	237	-100.00%	148	138	7.25%	9,421	9,547	-1.32%
155 - BISCAYNE GARDENS CIRC												
202 - LITTLE HAITI CONN												
211 OVERTOWN CIRCULATOR												
212-SWEETWATER CIRC												
217 - BUNCHE PARK CIRC												
254-BROWNSVILLE CIRC												
267-LUDLAM LIMITED												
286-NORTH POINTE CIRC												
344	149	165	-9.70%	95	92	3.26%				3,743	3,988	-6.14%
401 - NORTH OWL	62	68	-8.82%	61	68	-10.29%	53	71	-25.35%	1,883	2,052	-8.24%
MetroLink NoMi West	304	315	-3.49%							6,694	6,929	-3.39%
MetroLink North Miami	0	224	-100.00%								4,933	-100.00%
MetroLink LeJeune	0	72	-100.00%								1,592	-100.00%
MetroLink Killian Parkway											3,298	-100.00%
MetroLink Opa-Locka											719	-100.00%
Subtotal Contracted Reg. & Circ. Route	5,186	5,950	-12.84%	2,684	3,062	-12.34%	2,128	2,328	-8.59%	137,059	156,732	-12.55%
Percentage of All Bus Routes	3.20%	3.30%		2.60%	2.50%		2.50%	2.50%		3.10%	3.10%	

- (1) Several express routes were suspended beginning at the end of Mar-20, due to the SARS-CoV-2 pandemic, while other routes had alignment and schedule modifications made to them, in an ongoing effort to optimize service delivery.
- (2) A second major round of changes took place with the 11/13/23 lineup known as the Better Bus Network, as listed at the start of this Metrobus section.

BUS RIDERSHIP BY ROUTE SERVICE COMPARISON (MONTH-OVER-MONTH)

Boardings by Service Type and Route	Average Weekday	Average Weekday	Percent Change	Average Saturday	Average Saturday	Percent Change	Average Sunday	Average Sunday	Percent Change	Total Monthly	Total Monthly	Percent Change
	May-25	Apr-25	MOM	May-25	Apr-25	MOM	May-25	Apr-25	MOM	May-25	Apr-25	MOM
Contracted Express Routes												
301-DADE MONROE EXPRESS	1,443	1,459	-1.10%	1,526	1,506	1.33%	1,234	1,176	4.93%	44,861	43,539	3.04%
302-CARD SOUND EXPRESS	114	126	-9.52%	141	168	-16.07%	112	108	3.70%	3,667	3,883	-5.56%
Subtotal Contracted Express Routes	1,557	1,585	-1.77%	1,667	1,674	-0.42%	1,346	1,284	4.83%	48,528	47,422	2.33%
Percentage of All Bus Routes	0.88%	0.91%		1.53%	1.53%		1.69%	1.57%			1.00%	
Limited Stop Routes												
24-CORAL WAY LIMITED	2,248	2,189	2.70%	1493	1,435	4.04%	996	1,051	-5.23%	63,008	61,869	1.84%
38 TRANSITWAY MAX	5,562	5,041	10.34%	3820	3,435	11.21%	3319	3,097	7.17%	173,298	159,263	8.81%
203 - BISCAYNE MAX	891	822	8.39%							19,593	20,267	-3.33%
204 KILLIAN MAX	597	554	7.76%							13,140	12,670	3.71%
211 - FLAGLER MAX	1563	1,598	-2.19%							37,246	36,246	2.76%
241 TUTTLE LIMITED												
272 SUNSET MAX (*)	328	370	-11.35%							7,207	8,129	-11.34%
277-7TH AVENUE MAX												
279 - 79 STREET MAX	674	692	-2.60%							14,830	15,467	-4.12%
287-SAGA BAY MAX	313	285	9.82%							6,892	6,509	5.88%
288 KENDALL MAX	485	470	3.19%							10,680	10,699	-0.18%
297-27th AVENUE ORANGE MAX												
Subtotal Limited Stop Routes	12,661	12,021	5.32%	5,313	4,870	9.10%	4,315	4,148	4.03%	345,894	331,119	4.46%
Percentage of All Bus Routes	7.17%	6.90%		4.88%	4.50%		5.42%	5.10%			6.90%	
Directly Operated Free Routes												
132 -TRI-RAIL DORAL SHUTTLE	49	41	19.51%							1,081	1,012	6.82%
500 - CUTLER BAY LOCAL	169	158	6.96%	167	127	31.50%	82	62	32.26%	4,886	4,719	3.54%
510 - SKYLAKE CIRCULATOR (*)	326	426	-23.47%	128	138	-7.25%	123	111	10.81%	8,293	10,361	-19.96%
Subtotal Free Directly Operated Routes	544	625	-12.96%	295	265	11.32%	205	173	18.50%	14,260	16,092	-11.38%
Percentage of All Bus Routes	0.31%	0.40%		0.27%	0.20%		0.26%	0.20%			0.30%	
Contractor-Operated Lifeline Routes												
GREEN HILLS SHUTTLE	9	6	50.00%							26	23	13.04%
KINGS CREEK SHUTTLE	9	8	12.50%							45	33	36.36%
MEER / MARQUESS SHUTTLE	21	33	-36.36%							84	59	42.37%
SIERRA LAKES SHUTTLE	18	19	-5.26%							92	83	10.84%
ROBERT SHARP SHUTTLE	37	29	27.59%							148	163	-9.20%
AHEPA SHUTTLE	19	19	0.00%							94	110	-14.55%
FEDERATION GARDENS SHUTTLE				34	24	41.67%				116	109	6.42%
Subtotal Contractor-Operated Lifeline Routes	113	114	-0.88%	34	24	41.67%				605	580	4.31%
Percentage of All Bus Routes	0.06%	0.10%		0.00%	0.00%						0.00%	
All Other (Regular) Routes	150,536	148,226	1.56%	97,108	97,301	-0.20%	68,086	69,834	-2.50%	4,129,387	4,098,268	0.76%
Percentage of All Bus Routes	85.20%	85.00%		88.80%	89.70%		88.10%	88.80%		85.80%	85.90%	
Total Bus System	176,515	174,382	1.22%	108,816	109,199	-0.35%	79,591	81,629	-2.50%	4,850,901	4,804,586	0.96%

BUS RIDERSHIP BY ROUTE SERVICE TYPE LINEUPS COMPARISON (MONTH-OVER-19 MONTH)

Boardings by Service Type and Route	Average Weekday	Average Weekday	Percent Change	Average Saturday	Average Saturday	Percent Change	Average Sunday	Average Sunday	Percent Change	Total Monthly	Total Monthly	Percent Change
	May-25	Oct-23	25 vs 23	May-25	Oct-23	25 vs 23	May-25	Oct-23	25 vs 23	May-25	Oct-23	25 vs 23
Directly Operated Express Routes												
34 TRANSITWAY EXPRESS	1,511	1,636	-7.64%							39,487	36,002	9.68%
39 TRANSITWAY EXPRESS	901	742	21.43%							22,182	16,333	35.81%
95-EXPRESS GOLDEN GLADES	1,484	1,195	24.18%							33,623	26,295	27.87%
150-MIAMI BEACH AIRPORT EXPRESS	1,446	2,149	-32.71%	1,327	2,161	-38.59%	1,150	1,966	-0.415	43,307	65,763	-34.15%
338 - WEEKEND EXPRESS				149	259	-42.47%	154	247	-0.377	1,358	2,274	-40.28%
836 EXPRESS	330	247	33.60%							7,254	5,428	33.64%
837 EXPRESS	246	195	26.15%							5,423	4,281	26.68%
Subtotal Express Routes	5,918	6,165	-4.01%	1,476	2,420	-39.01%	1,304	2,214	-0.41102	152,634	156,376	-2.39%
Percentage of All Bus Routes	3.20%	3.30%		1.30%	2.30%		1.70%	2.70%		2.90%	3.20%	-9.38%
Contracted Routes - Local Service (*)												
2	2,209	2,977	-25.80%	948	1,605	-40.93%	763	1,214	-0.371	50,032	77,976	-35.84%
15	612	178	243.82%	482	93	418.28%	461	53	7.6981	17,300	4,545	280.64%
29		516									11,342	
46 - LIBERTY CITY CONN.		22									477	
56	286	391	-26.85%	94						6,195	8,598	-27.95%
new 57	201			78						4,437		
70	281	161	74.53%	191			178			7,712	3,546	117.48%
72	944	670	40.90%	565	357	58.26%	399	259	0.5405	24,052	17,459	37.76%
82 - WESTCHESTER CIRC		61			38						1,488	
97	207	225	-8.00%	170	163	4.29%	126	149	-0.154	5,590	6,337	-11.79%
115		151			80			66	-1		3,968	-100.00%
152	366	1,051	-65.18%	0	375		148	331	-0.553	9,421	26,285	-64.16%
155 - BISCAYNE GARDENS CIRC		45									985	
202 - LITTLE HAITI CONN		110			22			21	-1		2,620	
211 OVERTOWN CIRCULATOR		71									1,567	
212-SWEETWATER CIRC		22									494	
217 - BUNCHE PARK CIRC		80									1,759	
254-BROWNSVILLE CIRC		5									105	
267-LUDLAM LIMITED		162									3,567	
286-NORTH POINTE CIRC		93			61						2,279	
344	165	76	117.11%	95						3,743	1,666	124.67%
401 - NORTH OWL	68	61	11.48%	61	61	0.00%	53	65	-0.185	1,883	1,899	-0.84%
MetroLink NoMi West	315									6,694		
MetroLink North Miami	224											
MetroLink LeJeune	72											
MetroLink Killian Parkway												
MetroLink Opa-Locka												
Subtotal Contracted Reg. & Circ. Routes	5,950	7,125	-16.49%	2,684	2,854	-5.96%	2,128	2,158	-0.0139	137,059	178,962	-23.41%
Percentage of All Bus Routes		3.80%		2.60%	2.70%		2.50%	2.70%	-0.07407	3.10%	3.60%	

- (1) Several express routes were suspended beginning at the end of Mar-20, due to the SARS-CoV-2 pandemic, while other routes had alignment and schedule modifications made to them, in an ongoing effort to optimize service delivery.
- (2) A second major round of changes took place with the 11/13/23 lineup known as the Better Bus Network, as listed at the start of this Metrobus section.

BUS RIDERSHIP BY ROUTE SERVICE TYPE LINEUPS COMPARISON (MONTH-OVER-19 MONTH)

Boardings by Service Type and Route	Average Weekday	Average Weekday	Percent Change	Average Saturday	Average Saturday	Percent Change	Average Sunday	Average Sunday	Percent Change	Total Monthly	Total Monthly	Percent Change
	May-25	Oct-23	25 vs 23	May-25	Oct-23	25 vs 23	May-25	Oct-23	25 vs 23	May-25	23-Oct	25 vs 23
Contracted Express Routes												
301-DADE MONROE EXPRESS	1443	955	51.10%	1,526	885	72.43%	1,234	867	42.33%	44,861	28,889	55.29%
302-CARD SOUND EXPRESS	114	91	25.27%	141	94	50.00%	112	72	55.56%	3,667	2,728	34.42%
Subtotal Contracted Express Routes	1,557	1,046	48.85%	1,667	979	70.28%	1,346	938	43.50%	48,528	31,617	53.49%
Percentage of All Bus Routes	0.88%	0.60%		1.53%	0.90%		1.69%	1.20%		1.01%	0.60%	
Limited Stop Routes												
24-CORAL WAY LIMITED	2,248	2,195	2.41%	1493	1,400	6.64%	996	1,108	-10.11%	63,008	59,432	6.02%
38 TRANSITWAY MAX	5,562	5,714	-2.66%	3820	6,328	-39.63%	3319	4,957	-33.04%	173,298	175,803	-1.42%
203 - BISCAYNE MAX	891	3,666	-75.70%							19,593	80,650	-75.71%
204 KILLIAN MAX	597	620	-3.71%							13,140	13,632	-3.61%
211 - FLAGLER MAX	1563	3,824	-59.13%							37,246	84,135	-55.73%
241 TUTTLE LIMITED		348			222			187			9,471	
272 SUNSET MAX (*)	328	428	-23.36%							7,207	9,423	-23.52%
277-7TH AVENUE MAX		879									19,345	
279 - 79 STREET MAX	674	469	43.71%							14,830	10,318	43.73%
287-SAGA BAY MAX	313	341	-8.21%							6,892	7,499	-8.09%
288 KENDALL MAX	485	372	30.38%							10,680	8,189	30.42%
297-27th AVENUE ORANGE MAX		1,229									27,047	
Subtotal Limited Stop Routes	12,661	20,086	-36.97%	5,313	7,950	-33.17%	4,315	6,252	-30.98%	345,894	504,944	-31.50%
Percentage of All Bus Routes	7.17%	10.80%		4.88%	7.40%		5.42%	7.70%		7%	10.30%	
Directly Operated Free Routes												
132 - TRI-RAIL DORAL SHUTTLE	49	37	32.43%							1,081	804	34.45%
500 - CUTLER BAY LOCAL	169	176	-3.98%	167	152	9.87%	82	86	-4.65%	4,886	4,907	-0.43%
510 - SKYLAKE CIRCULATOR (*)	326	471	-30.79%	128	217	-41.01%	123	194	-36.60%	8,293	12,211	-32.09%
Subtotal Free Directly Operated Routes	544	684	-20.47%	295	369	-20.05%	205	280	-26.79%	14,260	17,922	-20.43%
Percentage of All Bus Routes	0.31%	0.40%		0.27%	0.30%		0.26%	0.30%		0.30%	0.40%	
Contractor-Operated Lifeline Routes												
GREEN HILLS SHUTTLE	9	5	80.00%							26	26	0.00%
KINGS CREEK SHUTTLE	9	14	-35.71%							45	55	-18.18%
MEEK / MARQUESS SHUTTLE	21									84		
SIERRA LAKES SHUTTLE	18	16	12.50%							92	62	48.39%
ROBERT SHARP SHUTTLE	37	23	60.87%							148	92	60.87%
AHEPA SHUTTLE	19	18	5.56%							94	71	32.39%
FEDERATION GARDENS SHUTTLE				34	20	70.00%				116	80	45.00%
Subtotal Contractor-Operated Lifeline Routes	113	75	50.67%	34	20	70.00%				605	386	56.74%
Percentage of All Bus Routes	0.06%	0.00%		0.00%	0.00%					0.01%	0.00%	
All Other (Regular) Routes	150,536	150,140	0.26%	97,108	92,739	4.71%	68,086	69,584	-2.15%	4,129,387	4,021,944	2.67%
Percentage of All Bus Routes	85.20%	81.00%		88.80%	86.40%		88.10%	85.50%		85.80%	81.90%	
Total Bus System	176,515	185,320	-4.75%	108,816	107,331	10.60%	79,591	81,427	-2.25%	4,828,273	4,912,151	-1.71%

Bus Routes as Ranked by Percentage of Average Weekday Ridership May2025

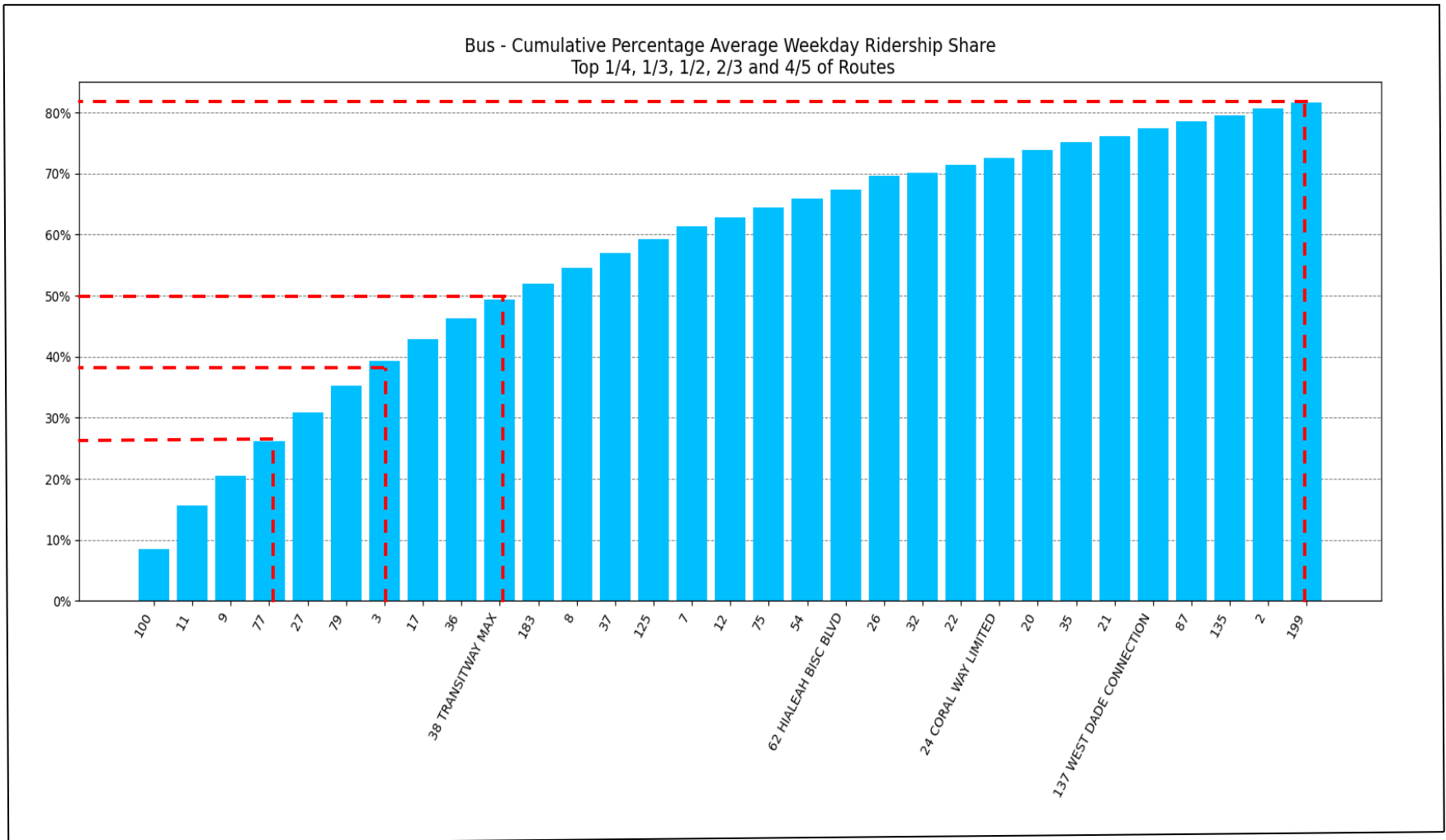
Rank	Route	Average Weekday	Percent Share	Cumul Pct Share	Rank	Route	Average Weekday	Percent Share	Cumul Pct Share	Rank	Route	Average Weekday	Percent Share	Cumul Pct Share
1	100	15,070	8.5%	8.5%	32	88	1,840	1.0%	82.8%	63	837	246	0.1%	99.3%
2	11	10,693	6.1%	14.6%	33	208	1,735	1.0%	83.7%	64	97	190	0.1%	99.4%
3	9	10,475	5.9%	20.5%	34	107	1,732	1.0%	84.7%	65	new 57	183	0.1%	99.5%
4	77	9,817	5.6%	26.1%	35	103	1,676	0.9%	85.7%	66	500	169	0.1%	99.6%
5	27	8,285	4.7%	30.8%	36	40	1,641	0.9%	86.6%	67	344	149	0.1%	99.7%
6	79	8,011	4.5%	35.3%	37	207	1,610	0.9%	87.5%	68	136	144	0.1%	99.8%
7	3	6,979	4.0%	39.3%	38	211	1,563	0.9%	88.4%	69	302	114	0.1%	99.8%
8	17	6,297	3.6%	42.8%	39	52	1,529	0.9%	89.3%	70	400	89	0.1%	99.9%
9	36	6,051	3.4%	46.3%	40	34	1,511	0.9%	90.1%	71	401	62	0.0%	99.9%
10	38	5,562	3.2%	49.4%	41	95	1,484	0.8%	91.0%	72	132	49	0.0%	99.9%
11	183	4,534	2.6%	52.0%	42	150	1,446	0.8%	91.8%	73	RS	37	0.0%	100.0%
12	8	4,465	2.5%	54.5%	43	301	1,443	0.8%	92.6%	74	M/M	21	0.0%	100.0%
13	37	4,356	2.5%	57.0%	44	73	1,244	0.7%	93.3%	75	AS	19	0.0%	100.0%
14	125	4,164	2.4%	59.3%	45	104	1,071	0.6%	93.9%	76	SL	18	0.0%	100.0%
15	7	3,375	1.9%	61.3%	46	14	981	0.6%	94.5%	77	GH	9	0.0%	100.0%
16	12	2,830	1.6%	62.9%	47	39	901	0.5%	95.0%	78	KC	9	0.0%	100.0%
17	75	2,728	1.5%	64.4%	48	72	892	0.5%	95.5%	entirely contracted in May-25				
18	54	2,662	1.5%	65.9%	49	203	891	0.5%	96.0%					
19	62	2,572	1.5%	67.4%	50	new 101	733	0.4%	96.4%					
20	26	2,401	1.4%	68.7%	51	279	674	0.4%	96.8%					
21	32	2,349	1.3%	70.1%	52	204	597	0.3%	97.1%					
22	22	2,288	1.3%	71.4%	53	15	592	0.3%	97.5%					
23	24	2,248	1.3%	72.6%	54	288	485	0.3%	97.7%					
24	20	2,189	1.2%	73.9%	55	152	359	0.2%	97.9%					
25	35	2,185	1.2%	75.1%	56	836	330	0.2%	98.1%					
26	21	1,981	1.1%	76.2%	57	272	328	0.2%	98.3%					
27	137	1,977	1.1%	77.4%	58	510	326	0.2%	98.5%					
28	87	1,959	1.1%	78.5%	59	287	313	0.2%	98.7%					
29	135	1,928	1.1%	79.6%	60	8000	304	0.2%	98.8%					
30	2	1,920	1.1%	80.6%	61	70	275	0.2%	99.0%					
31	199	1,890	1.1%	81.7%	62	56	260	0.1%	99.1%					
											Total Boardings		176,515	100.00%

(1) Average weekday ridership rounded to the nearest unit.

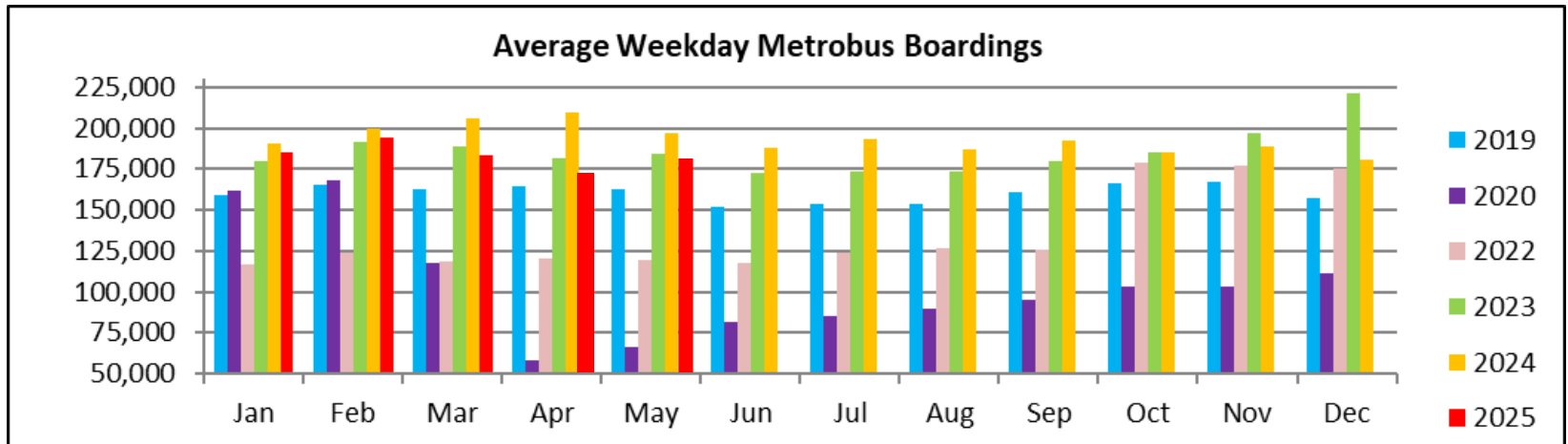
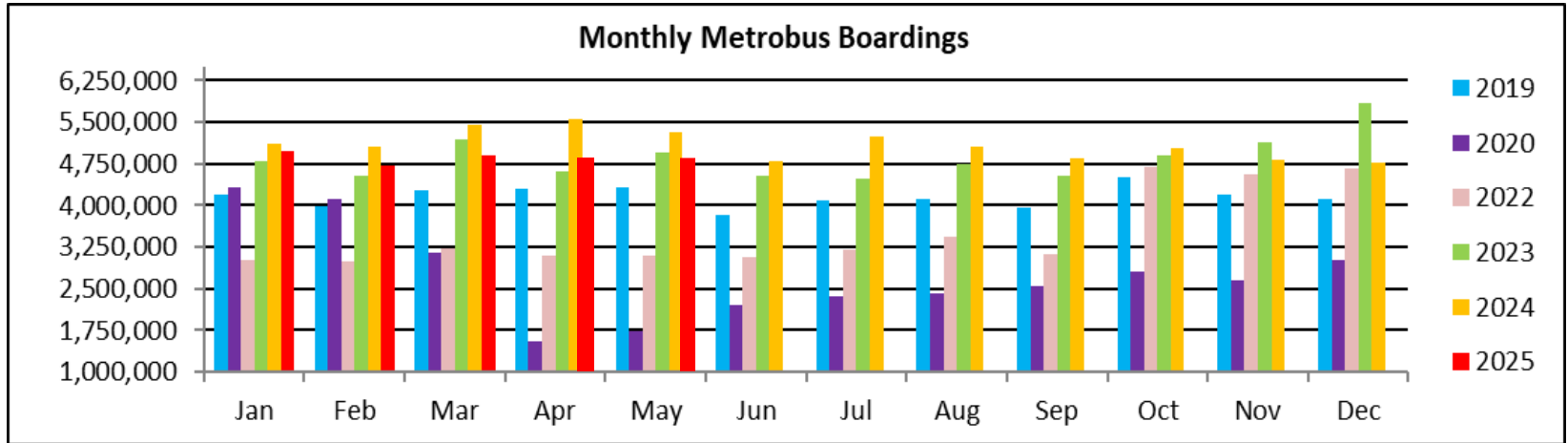
(2) Includes the five Lifeline Shuttles that operate on weekdays: Ahepa (AS), Green Hills (GH), Kings Creek (KC), Meek/Marquess (M/M), Robert Sharp (RS) and Sierra Lakes (SL).

(3) Routes 8000, 8001, 8002, 8003 and 8005 refer to the five Better Bus Network MetroLink contracted supplemental routes, launched in July and August 2024 and still running: MetroLink NoMi West, MetroLink North Miami, MetroLink LeJeune, MetroLink Killian Parkway, and MetroLink Opa-Locka, respectively.

METROBUS CUMULATIVE PERCENTAGE RIDERSHIP SHARE – BY ROUTE



TOTAL MONTHLY AND AVERAGE WEEKDAY RIDERSHIP YEAR OVER YEAR COMPARISON CHARTS – METROBUS



**“TOP 10 / BOTTOM 10” BUS ROUTES AVERAGE WEEKDAY RIDERSHIP PERFORMANCE
YEAR OVER YEAR COMPARISON**

Route	May-25	45,438	Absolute Delta	Percent Delta
32	2,349	1,792	557	31.08%
301-DADE MONROE EXPRESS	1,443	1,027	416	40.51%
208-LITTLE HAVANA CONN	1,735	1,585	150	9.46%
100	15,070	14,955	115	0.77%
95-EXPRESS GOLDEN GLADES	1,484	1,381	103	7.46%
39 TRANSITWAY EXPRESS	901	816	85	10.42%
15	592	554	38	6.86%
297-27th AVENUE ORANGE MAX	674	636	38	5.97%
837 EXPRESS	246	214	32	14.95%
79	8,011	7,981	30	0.38%

77	9,817	12,434	-2617	-21.05%
38-TRANSITWAY MAX	5,562	7,453	-1891	-25.37%
27	8,285	9,982	-1697	-17.00%
20	2,189	3,850	-1661	-43.14%
9	10,475	12,065	-1590	-13.18%
3	6,979	8,339	-1360	-16.31%
17	6,297	7,392	-1095	-14.81%
183	4,534	5,419	-885	-16.33%
11	10,693	11,464	-771	-6.73%
125	4,164	4,844	-680	-14.04%

(*) Averages rounded to the nearest boarding, data as estimated from automatic passenger counter (APC) system; Lifeline shuttles excluded.

“TOP 10 / BOTTOM 10” BUS ROUTES SETS AVERAGE WEEKDAY RIDERSHIP PERFORMANCE YEAR OVER YEAR COMPARISON

Route Set (*), (1), (2)	25-May	24-May	Absolute Delta	Percent Delta	routes included in set
301	1,443	1,027	416	40.51%	301
208	1,735	1,585	150	9.46%	208
{100}	15,070	14,955	115	0.77%	100,105,119,120
{95}	1,484	1,381	103	7.46%	95,195,196,295,296
39	901	816	85	10.42%	39
15	592	554	38	6.86%	15
837	246	214	32	14.95%	837
{279}	8,011	7,981	30	0.38%	79,112,279
{14}	981	953	28	2.94%	14,113,241
{836}	330	317	13	4.10%	836
{77}	9,817	12,434	-2617	-21.05%	77, 277
{38}	5,711	7,584	-1873	-24.70%	31,38,344
{17 & 22 & 75}	11,313	13,079	-1766	-13.50%	17, 22, 75, 108, 217
{3 & 203}	7,870	9,596	-1726	-17.99%	3,93,203
{27}	8,285	9,982	-1697	-17.00%	27,297
{9}	10,475	12,065	-1590	-13.18%	9,10,16
{20}	4,538	5,642	-1104	-19.57%	20,32,115
{73 & 183}	6,078	6,856	-778	-11.35%	57, 73, 183, 238, 267, 286
{11}	10,693	11,464	-771	-6.73%	11,212
{125}	4,164	4,844	-680	-14.04%	19,107,125

(*) Averages rounded to the nearest boarding, data as estimated from automatic passenger counter (APC) system; Lifeline shuttles excluded.

(1) The route sets, denoted by brackets, include the new 11/13/2023 lineup's Better Bus Network route designations, as well as older routes present for the first part of the month and previous months and years, then either renamed, absorbed, or eliminated. The sets were defined to enable reasonably fair comparisons between pre- and post-BBN timeframes, to the extent possible and practical, given the complexity of the changes for some of the routes and sets. The definitions were based on information from the DTPW website, and subject to future adjustments, if necessary.

(2) The adjective "new" in front of some new Better Bus Network-generated (recycled) route numbers was added to help distinguish those routes from older but different routes with the same number present in previous months or years.

**“TOP 10 / BOTTOM 10” BUS ROUTES SETS AVERAGE WEEKDAY RIDERSHIP PERFORMANCE
MONTH OVER 19-MONTH PRIOR COMPARISON**

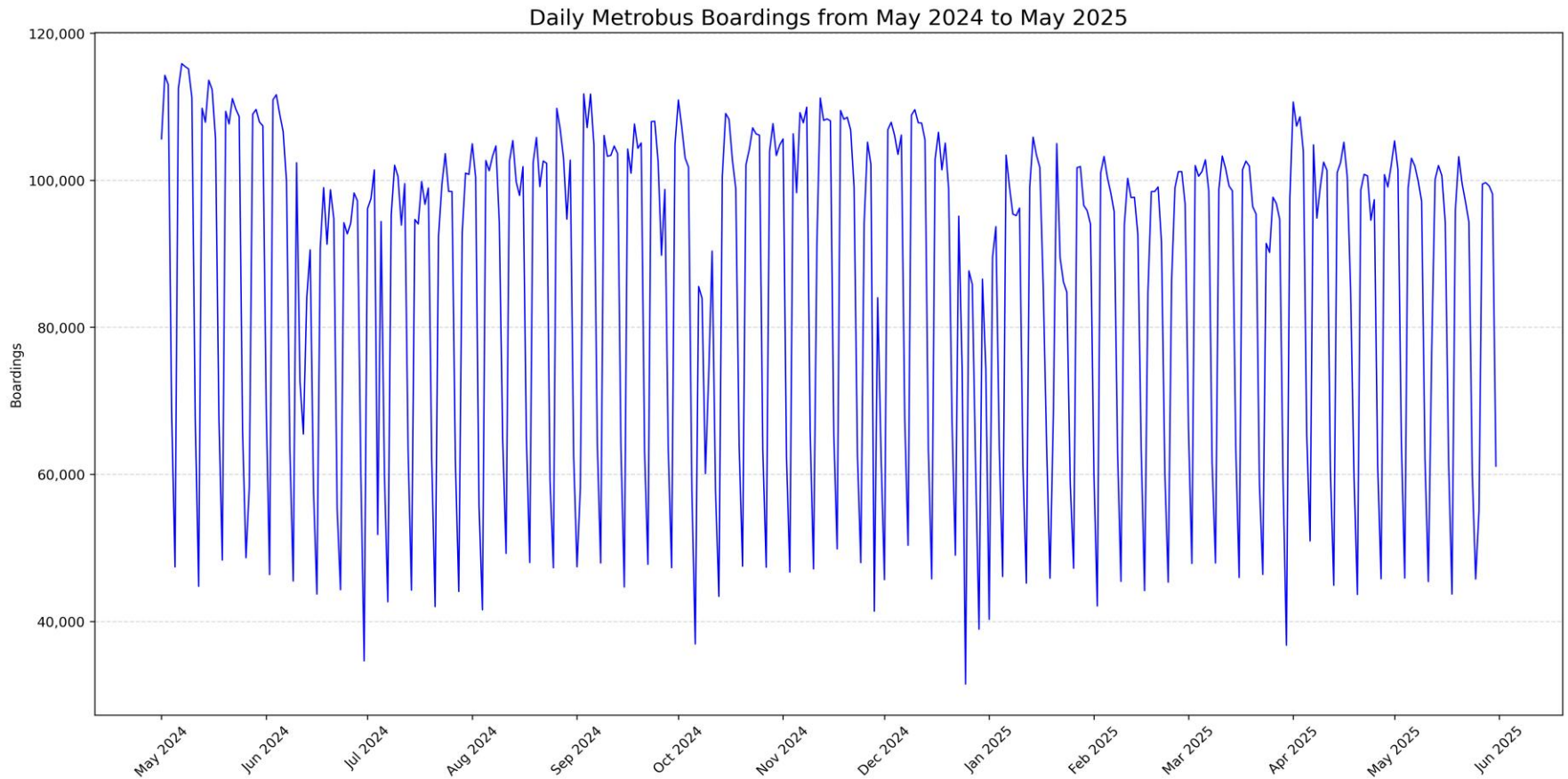
Route Set (*), (1), (2)	45,802		Absolute Percent		routes included in set
	45,802	45,953	Delta	Delta	
{20}	4,538	2,850	1688	40.70%	20,32,115
{11}	10,693	9,643	1050	23.90%	11,212
{107}	1,732	825	907	17.00%	35,56,183,238,267,286
{17 & 22 & 75}	11,313	10,629	684	1.50%	17,22,75,18,217
26	2,401	1,877	524	22.30%	26
301	1,443	955	488	21.40%	301
{36}	6,051	5,600	451	-2.40%	36,110
15	592	178	414	-6.80%	15
125	4,164	3,816	348	-0.60%	19,107,125
{95}	1,484	1,195	289	-0.90%	95,195,196,295,296
{211}	1,563	3,824	-2261	-25.60%	211
{100}	15,070	17,118	-2048	-16.30%	100, 105, 119, 120
{3 & 203}	7,870	9,082	-1212	-19.90%	3,93,203
40	1,641	2,344	-703	-20.90%	40
150	1,446	2,149	-703	-26.20%	150
7	3,375	4,021	-646	-30.60%	7
88	1,840	2,419	-579	-22.30%	88
{52}	1,888	2,441	-553	-21.00%	52,152,252
{37 & 54}	7,018	7,566	-548	-17.70%	29,37,42,54,254
{279}	8,011	8,481	-470	-22.80%	79,112,279

(*) Averages rounded to the nearest boarding, data as estimated from automatic passenger counter (APC) system; Lifeline shuttles excluded.

(1) The route sets, denoted by brackets, include the new 11/13/2023 lineup's Better Bus Network route designations, as well as older routes present for the first part of the month and previous months and years, then either renamed, absorbed, or eliminated. The sets were defined to enable reasonably fair comparisons between pre- and post-BBN timeframes, to the extent possible and practical, given the complexity of the changes for some of the routes and sets. The definitions were based on information from the DTPW website, and subject to future adjustments, if necessary.

(2) The adjective "new" in front of some new Better Bus Network-generated (recycled) route numbers was added to help distinguish those routes from older but different routes with the same number present in previous months or years.

DAILY METROBUS RIDERSHIP (12-Month Period)



METROBUS PARKING PATRONAGE SUMMARY

May 2025

PARK-RIDE LOT	ACTUAL AVAILABLE SPACES	ACTUAL OCCUPANCY	PERCENT OCCUPANCY
Transitway / SW 152nd Street	200	117	59%
Transitway / SW 168th Street (*)	149	0	0%
Transitway / SW 200th Street (**)	100	0	0%
Transitway / SW 112 Avenue (eff 7-2009)	450	196	44%
Transitway / SW 244th Street	95	49	52%
Transitway / SW 296th Street	139	30	22%
Transitway / SW 344th Street	248	192	77%
Coral Reef Drive / 117 Ave Turnpike	95	91	96%
Golden Glades Facility	2,150	542	25%
Hammocks Town Center (SW 152 Ave / SW 104 St)	50	19	38%
Kendall Dr./SW 127th Avenue	161	5	3%
West Kendall Transit Term (Kendall Dr/SW 162 Ave)	40	16	40%
NW 7th Avenue Transit Village (NW 7 Ave / NW 62 St)	25	25	100%
Miami Gardens Dr./NW 73rd Avenue	136	1	1%
Dolphin Station	348	83	24%
Tamiami Station (eff 11-2022)	442	90	20%
* I-75 / Miami Gardens Dr. (***)	298	0	0%
TOTAL	5,126	1,456	28%

(*) Closed for construction beginning February 2022

(**) Closed for construction beginning February 2025

(***) Route 175 suspended 3/27/2020, discontinued with Better Bus Network 11/13/23

Metrorail



May 2025

METRORAIL AVERAGE WEEKDAY BOARDINGS BY STATION (†)

Weekdays	Average Weekday	Average Weekday	Percent Change	Average Weekday	Percent Change	Average Weekday	Percent Change	Average Weekday	Percent Change
STATIONS	May-25	May-24	YOY	Feb-20	Current vs Feb-20	Apr-25	MOM	May-19	YO6Y
ALLAPATTAH	1,630	1,691	-3.61%	1,942	-16.07%	1,720	-5.23%	1,778	-8.32%
BRICKELL	5,348	5,395	-0.87%	6,529	-18.09%	5,739	-6.81%	6,024	-11.22%
BROWNSVILLE	513	581	-11.70%	862	-40.49%	543	-5.52%	818	-37.29%
UHEALTH JACKSON	235	1,814	-87.05%	6,143	-96.17%	5,002	-95.30%	5,579	-95.79%
COCONUT GROVE	511	993	-48.54%	1,795	-71.53%			1,583	-67.72%
CULMER	4,836	4,122	17.32%	1,392	247.41%	411	1076.64%	1,189	306.73%
DADELAND NORTH	4,356	4,617	-5.65%	5,926	-26.49%	5,145	-15.34%	5,541	-21.39%
DADELAND SOUTH	3,582	3,259	9.91%	7,150	-49.90%	4,741	-24.45%	6,552	-45.33%
DOUGLAS ROAD	899	949	-5.27%	3,624	-75.19%	4,222	-78.71%	3,467	-74.07%
DR. MARTIN LUTHER KING, JR.	1,346	1,396	-3.58%	1,157	16.34%	933	44.27%	1,070	25.79%
EARLINGTON HEIGHTS	6,806	6,437	5.73%	1,662	309.51%	1,434	374.62%	1,475	361.42%
GOVERNMENT CENTER	1,180	1,293	-8.74%	10,557	-88.82%	7,474	-84.21%	9,468	-87.54%
HIALEAH	1,240	1,415	-12.37%	1,253	-1.04%	1,275	-2.75%	1,201	3.25%
MIAMI INTERNATIONAL AIRPORT	1,242	1,355	-8.34%	1,711	-27.41%	1,276	-2.66%	1,561	-20.44%
NORTHSIDE	904	998	-9.42%	1,476	-38.75%	1,113	-18.78%	1,324	-31.72%
OKEECHOBEE	2,209	1,806	22.31%	1,164	89.78%	999	121.12%	1,141	93.60%
OVERTOWN / ARENA	1,378	1,285	7.24%	2,274	-39.40%	2,310	-40.35%	2,074	-33.56%
PALMETTO	791	793	-0.25%	1,543	-48.74%	1,492	-46.98%	1,420	-44.30%
SANTA CLARA	2,194	2,140	2.52%	812	170.20%	861	154.82%	714	207.28%
SOUTH MIAMI	1,017	1,140	-10.79%	3,015	-66.27%	2,381	-57.29%	2,791	-63.56%
TRI-RAIL	4,621	4,423	4.48%	1,207	282.85%	1,043	343.05%	1,083	326.69%
UNIVERSITY	1,567	1,485	5.52%	2,784	-43.71%	2,500	-37.32%	1,836	-14.65%
VIZCAYA	1,574	1,279	23.06%	1,390	13.24%	1,716	-8.28%	1,264	24.53%
TOTAL	49,977	50,667	-1.36%	67,367	-25.81%	54,329	-8.01%	60,953	-18.01%

(†) In this table and those which follow, "YOY" stands for "year-over-year", "MOM" for "month-over-month" and, e.g., "YO6Y" for "year over six years", i.e., current month vs 12 months prior, one month prior, and 72 months prior, respectively. The Feb-20 numbers serve as a strong pre-pandemic benchmark.

(*) Coconut Grove Station was closed for renovations during the entire month.

METRORAIL AVERAGE SATURDAY BOARDINGS BY STATION

Saturdays	Average Saturday	Average Saturday	Percent Change	Average Saturday	Percent Change	Average Saturday	Percent Change	Average Saturday	Percent Change
STATIONS	May-25	May-24	YOY	Feb-20	Current vs Feb-20	Apr-25	MOM	May-19	YO6Y
ALLAPATTAH	904	914	-1.09%	1,051	-13.99%	936	-3.42%	1,000	-9.60%
BRICKELL	2,467	2,480	-0.52%	2,811	-12.24%	2,706	-8.83%	2,656	-7.12%
BROWNSVILLE	287	343	-16.33%	520	-44.81%	329	-12.77%	509	-43.61%
UHEALTH JACKSON	139	924	-84.96%	959	-85.51%	830	-83.25%	902	-84.59%
COCONUT GROVE	226	483	-53.21%	928	-75.65%			815	-72.27%
CULMER	1,663	1,380	20.51%	721	130.65%	175	850.29%	627	165.23%
DADELAND NORTH	1,700	1,882	-9.67%	1,994	-14.74%	1,760	-3.41%	1,806	-5.87%
DADELAND SOUTH	1,610	1,393	15.58%	2,625	-38.67%	1,916	-15.97%	2,375	-32.21%
DOUGLAS ROAD	528	578	-8.65%	1,319	-59.97%	1,813	-70.88%	1,284	-58.88%
DR. MARTIN LUTHER KING, JR.	712	755	-5.70%	625	13.92%	517	37.72%	615	15.77%
EARLINGTON HEIGHTS	2,782	2,748	1.24%	935	197.54%	769	261.77%	844	229.62%
GOVERNMENT CENTER	548	596	-8.05%	4,262	-87.14%	3,141	-82.55%	3,565	-84.63%
HIALEAH	851	1,039	-18.09%	583	45.97%	591	43.99%	567	50.09%
MIAMI INTERNATIONAL AIRPORT	714	794	-10.08%	1,330	-46.32%	873	-18.21%	1,232	-42.05%
NORTHSIDE	339	445	-23.82%	878	-61.39%	670	-49.40%	868	-60.94%
OKEECHOBEE	814	604	34.77%	408	99.51%	377	115.92%	381	113.65%
OVERTOWN / ARENA	388	399	-2.76%	678	-42.77%	866	-55.20%	531	-26.93%
PALMETTO	405	385	5.19%	458	-11.57%	444	-8.78%	370	9.46%
SANTA CLARA	962	947	1.58%	422	127.96%	412	133.50%	412	133.50%
SOUTH MIAMI	461	518	-11.00%	1,256	-63.30%	1,030	-55.24%	1,143	-59.67%
TRI-RAIL	754	739	2.03%	614	22.80%	461	63.56%	512	47.27%
UNIVERSITY	524	464	12.93%	714	-26.61%	866	-39.49%	552	-5.07%
VIZCAYA	674	542	24.35%	622	8.36%	751	-10.25%	559	20.57%
TOTAL	20,449	21,350	-4.22%	26,714	-23.45%	22,231	-8.02%	24,125	-15.24%

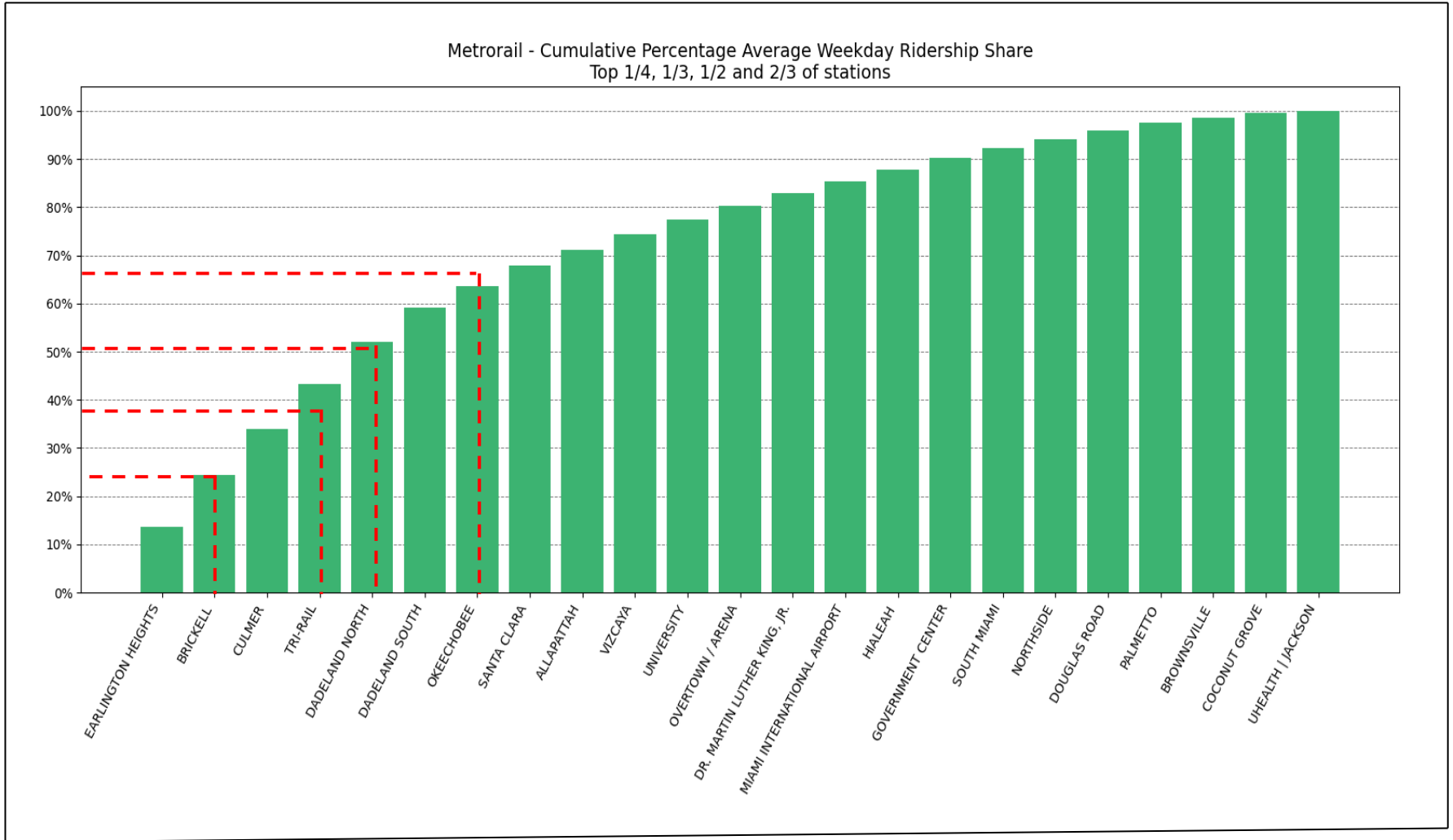
METRORAIL AVERAGE SUNDAY BOARDINGS BY STATION

Saturdays	Average Saturday	Average Saturday	Percent Change	Average Saturday	Percent Change	Average Saturday	Percent Change	Average Saturday	Percent Change
STATIONS	May-25	May-24	YOY	Feb-20	Current vs Feb-20	Apr-25	MOM	May-19	YO6Y
ALLAPATTAH	904	914	-1.09%	1,051	-13.99%	936	-3.42%	1,000	-9.60%
BRICKELL	2,467	2,480	-0.52%	2,811	-12.24%	2,706	-8.83%	2,656	-7.12%
BROWNSVILLE	287	343	-16.33%	520	-44.81%	329	-12.77%	509	-43.61%
UHEALTH JACKSON	139	924	-84.96%	959	-85.51%	830	-83.25%	902	-84.59%
COCONUT GROVE	226	483	-53.21%	928	-75.65%			815	-72.27%
CULMER	1,663	1,380	20.51%	721	130.65%	175	850.29%	627	165.23%
DADELAND NORTH	1,700	1,882	-9.67%	1,994	-14.74%	1,760	-3.41%	1,806	-5.87%
DADELAND SOUTH	1,610	1,393	15.58%	2,625	-38.67%	1,916	-15.97%	2,375	-32.21%
DOUGLAS ROAD	528	578	-8.65%	1,319	-59.97%	1,813	-70.88%	1,284	-58.88%
DR. MARTIN LUTHER KING, JR.	712	755	-5.70%	625	13.92%	517	37.72%	615	15.77%
EARLINGTON HEIGHTS	2,782	2,748	1.24%	935	197.54%	769	261.77%	844	229.62%
GOVERNMENT CENTER	548	596	-8.05%	4,262	-87.14%	3,141	-82.55%	3,565	-84.63%
HIALEAH	851	1,039	-18.09%	583	45.97%	591	43.99%	567	50.09%
MIAMI INTERNATIONAL AIRPORT	714	794	-10.08%	1,330	-46.32%	873	-18.21%	1,232	-42.05%
NORTHSIDE	339	445	-23.82%	878	-61.39%	670	-49.40%	868	-60.94%
OKEECHOBEE	814	604	34.77%	408	99.51%	377	115.92%	381	113.65%
OVERTOWN / ARENA	388	399	-2.76%	678	-42.77%	866	-55.20%	531	-26.93%
PALMETTO	405	385	5.19%	458	-11.57%	444	-8.78%	370	9.46%
SANTA CLARA	962	947	1.58%	422	127.96%	412	133.50%	412	133.50%
SOUTH MIAMI	461	518	-11.00%	1,256	-63.30%	1,030	-55.24%	1,143	-59.67%
TRI-RAIL	754	739	2.03%	614	22.80%	461	63.56%	512	47.27%
UNIVERSITY	524	464	12.93%	714	-26.61%	866	-39.49%	552	-5.07%
VIZCAYA	674	542	24.35%	622	8.36%	751	-10.25%	559	20.57%
TOTAL	20,449	21,350	-4.22%	26,714	-23.45%	22,231	-8.02%	24,125	-15.24%

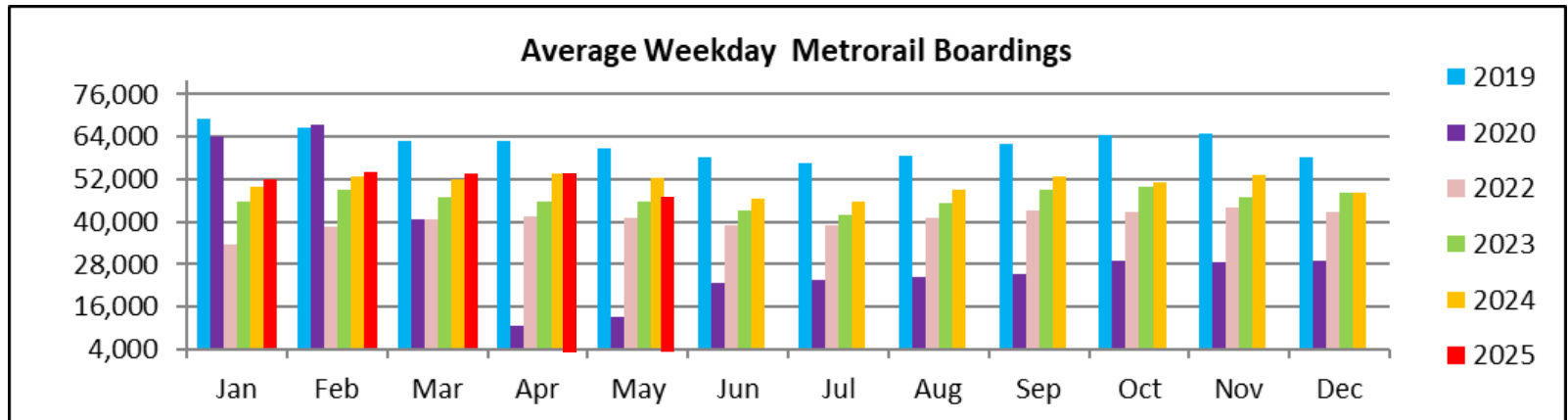
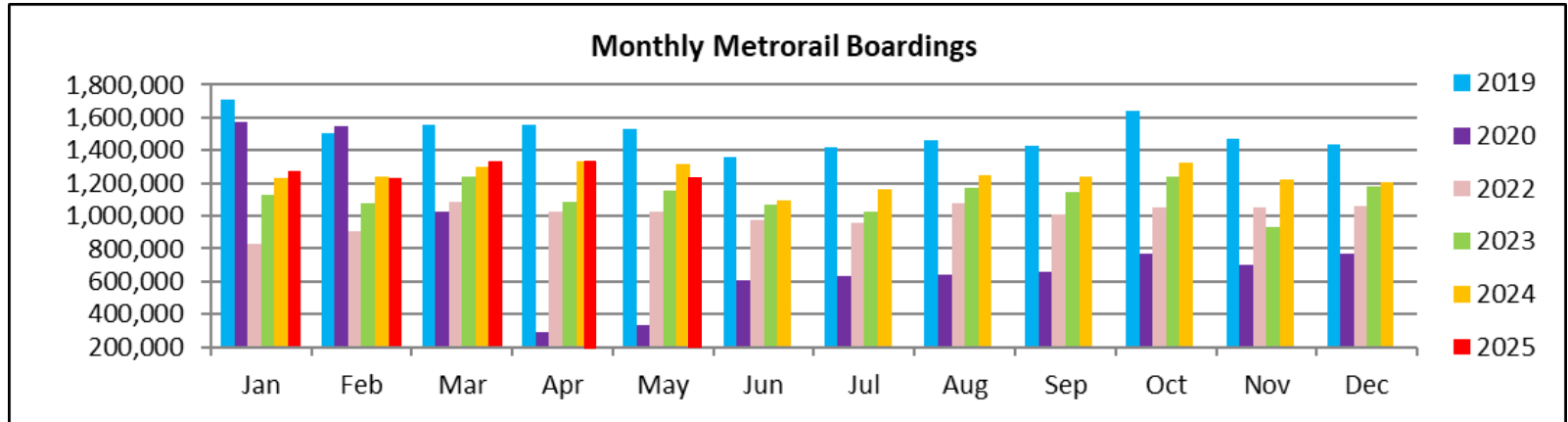
METRORAIL TOTAL MONTHLY BOARDINGS BY STATION

Saturdays	Average Saturday	Average Saturday	Percent Change	Average Saturday	Percent Change	Average Saturday	Percent Change	Average Saturday	Percent Change
STATIONS	May-25	May-24	YOY	Feb-20	Current vs Feb-20	Apr-25	MOM	May-19	YO6Y
ALLAPATTAH	904	914	-1.09%	1,051	-13.99%	936	-3.42%	1,000	-9.60%
BRICKELL	2,467	2,480	-0.52%	2,811	-12.24%	2,706	-8.83%	2,656	-7.12%
BROWNSVILLE	287	343	-16.33%	520	-44.81%	329	-12.77%	509	-43.61%
UHEALTH JACKSON	139	924	-84.96%	959	-85.51%	830	-83.25%	902	-84.59%
COCONUT GROVE	226	483	-53.21%	928	-75.65%			815	-72.27%
CULMER	1,663	1,380	20.51%	721	130.65%	175	850.29%	627	165.23%
DADELAND NORTH	1,700	1,882	-9.67%	1,994	-14.74%	1,760	-3.41%	1,806	-5.87%
DADELAND SOUTH	1,610	1,393	15.58%	2,625	-38.67%	1,916	-15.97%	2,375	-32.21%
DOUGLAS ROAD	528	578	-8.65%	1,319	-59.97%	1,813	-70.88%	1,284	-58.88%
DR. MARTIN LUTHER KING, JR.	712	755	-5.70%	625	13.92%	517	37.72%	615	15.77%
EARLINGTON HEIGHTS	2,782	2,748	1.24%	935	197.54%	769	261.77%	844	229.62%
GOVERNMENT CENTER	548	596	-8.05%	4,262	-87.14%	3,141	-82.55%	3,565	-84.63%
HIALEAH	851	1,039	-18.09%	583	45.97%	591	43.99%	567	50.09%
MIAMI INTERNATIONAL AIRPORT	714	794	-10.08%	1,330	-46.32%	873	-18.21%	1,232	-42.05%
NORTHSIDE	339	445	-23.82%	878	-61.39%	670	-49.40%	868	-60.94%
OKEECHOBEE	814	604	34.77%	408	99.51%	377	115.92%	381	113.65%
OVERTOWN / ARENA	388	399	-2.76%	678	-42.77%	866	-55.20%	531	-26.93%
PALMETTO	405	385	5.19%	458	-11.57%	444	-8.78%	370	9.46%
SANTA CLARA	962	947	1.58%	422	127.96%	412	133.50%	412	133.50%
SOUTH MIAMI	461	518	-11.00%	1,256	-63.30%	1,030	-55.24%	1,143	-59.67%
TRI-RAIL	754	739	2.03%	614	22.80%	461	63.56%	512	47.27%
UNIVERSITY	524	464	12.93%	714	-26.61%	866	-39.49%	552	-5.07%
VIZCAYA	674	542	24.35%	622	8.36%	751	-10.25%	559	20.57%
TOTAL	20,449	21,350	-4.22%	26,714	-23.45%	22,231	-8.02%	24,125	-15.24%

METRORAIL CUMULATIVE PERCENTAGE RIDERSHIP SHARE



TOTAL MONTHLY AND AVERAGE WEEKDAY RIDERSHIP YEAR OVER YEAR COMPARISON CHARTS – METRORAIL

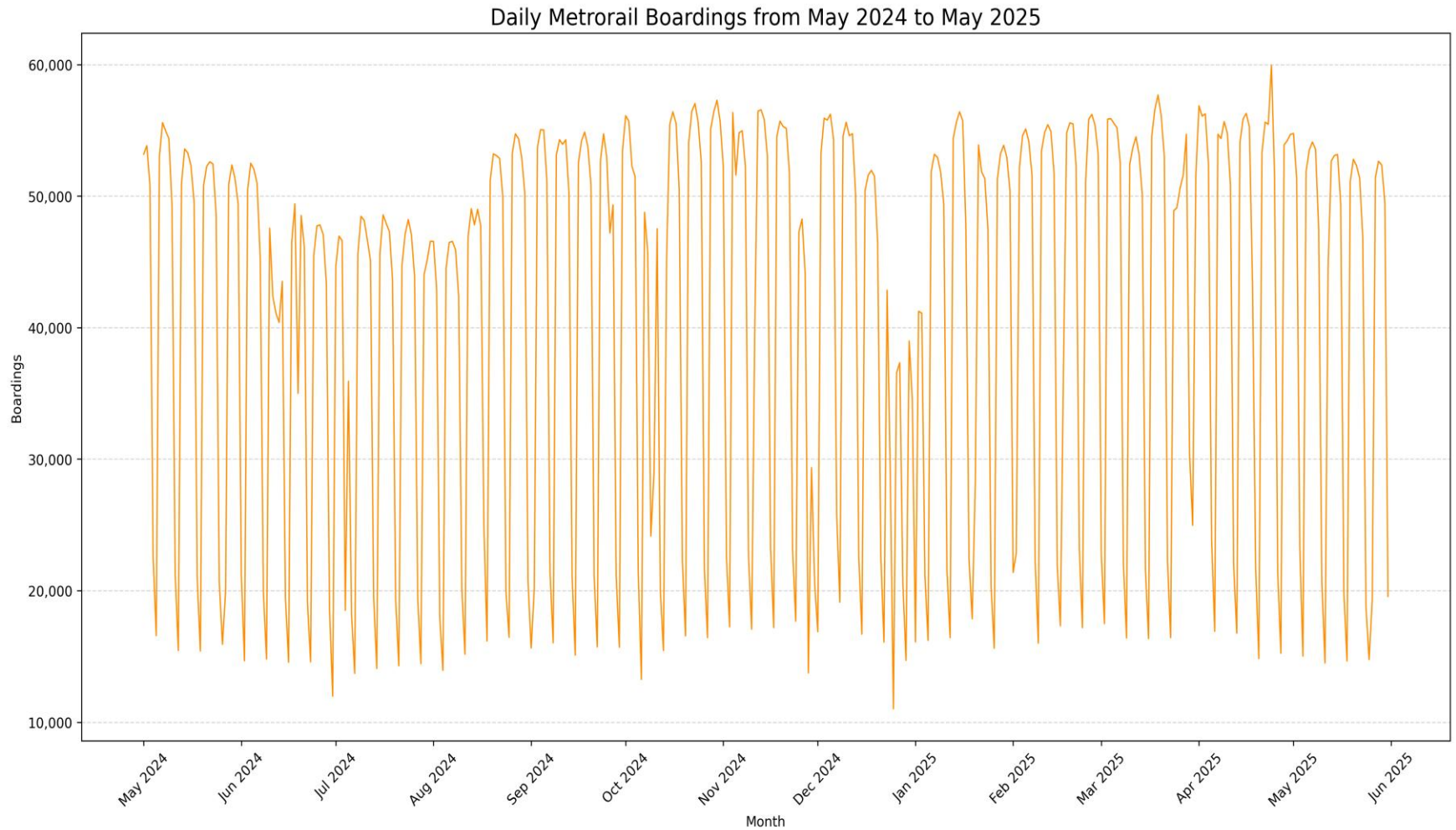


**“TOP 5 / BOTTOM 5” RAIL STATIONS AVERAGE WEEKDAY RIDERSHIP PERFORMANCE
YEAR OVER YEAR COMPARISONS**

Station	May-25	May-24	Absolute Delta (1)	Percent Delta
CULMER	4,836	4,122	714	17.00%
OKEECHOBEE	2,209	1,806	403	22.00%
EARLINGTON HEIGHTS	6,806	6,437	369	6.00%
DADELAND SOUTH	3,582	3,259	323	10.00%
VIZCAYA	1,574	1,279	295	23.00%
UHEALTH JACKSON	235	1,814	-1579	-87.00%
COCONUT GROVE	511	993	-482	-49.00%
DADELAND NORTH	4,356	4,617	-261	-6.00%
HIALEAH	1,240	1,415	-175	-12.00%
SOUTH MIAMI	1,017	1,140	-123	-11.00%

(1) Averages rounded to the nearest boarding.

DAILY METRORAIL RIDERSHIP (12-Month Period)



METRORAIL PARKING PATRONAGE SUMMARY MAY 2025

PARK-RIDE LOT	ACTUAL CAPACITY (1)	ACTUAL OCCUPANCY (2)	PERCENT OCCUPANCY
DADELAND SOUTH	1,138	839	74%
DADELAND NORTH	1,760	1,401	80%
SOUTH MIAMI	837	336	40%
UNIVERSITY	375	169	45%
DOUGLAS ROAD	190		
COCONUT GROVE	100		
VIZCAYA	90	45	50%
CULMER	40	17	43%
SANTA CLARA	61	26	43%
ALLAPATTAH	74	6	8%
EARLINGTON HEIGHTS	361	145	40%
BROWNSVILLE	100	71	71%
DR. MARTIN LUTHER KING JR. (MDT)	62		
DR. MARTIN LUTHER KING JR. (GARAGE)	631		
NORTHSIDE	126	75	60%
HIALEAH	238	73	31%
OKEECHOBEE	1,256	150	12%
PALMETTO	700	164	23%
TOTAL	8,139	3,357	43%

- (1) Number of spaces could vary each week; shown are available spaces during final week of month, as submitted by DTPW Safety & Security office.
(2) All sampled occupancy data provided by DTPW Safety & Security office; calculations are revisions to those submitted by that entity.
(3) Daily averages rounded to nearest unit, with fewer samples at some stations than others, depending on staffing levels; calculations are based on sampled counted days only per raw data submitted, with resulting average daily occupancy shown.

Metromover

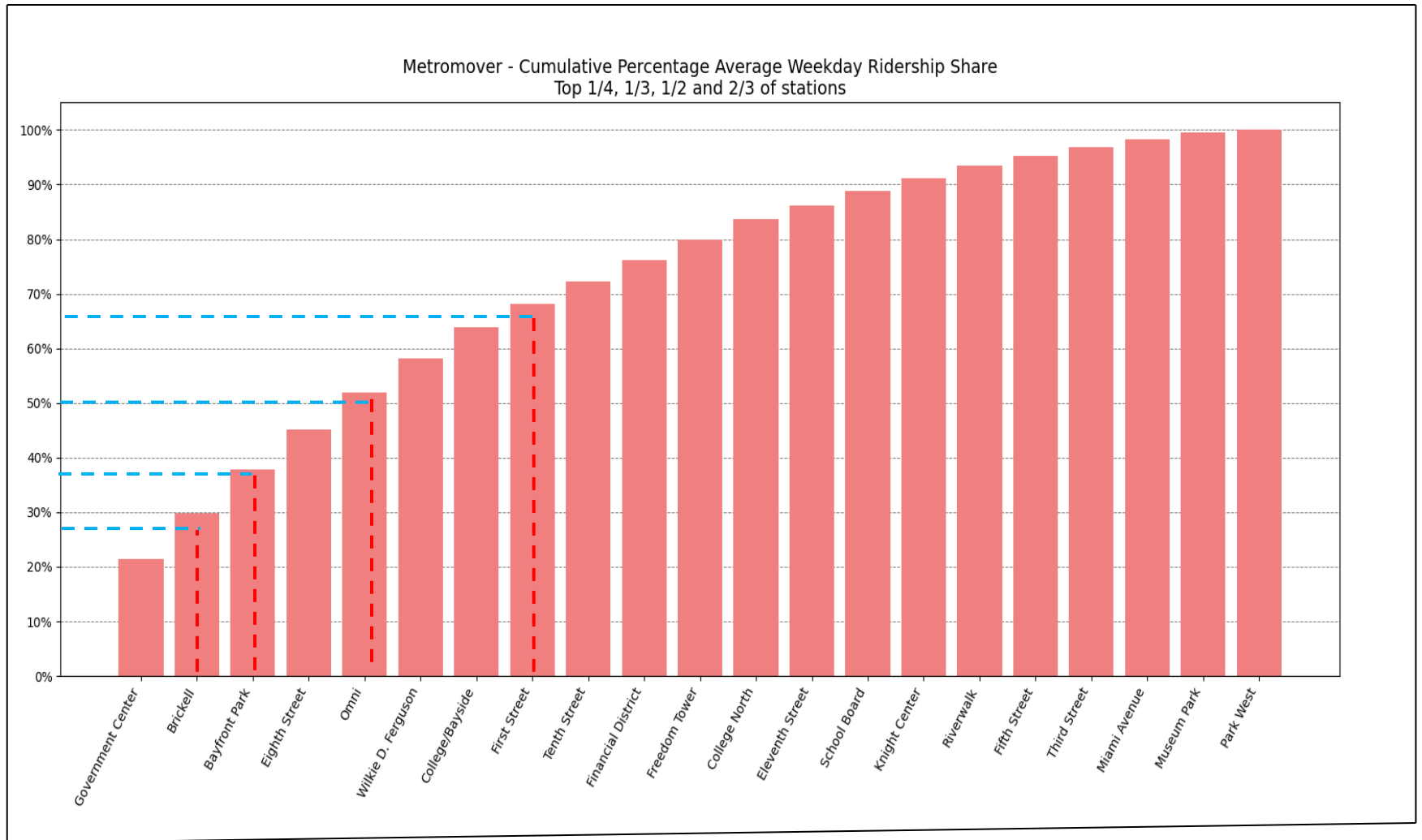


METROMOVER MONTHLY AND AVERAGE DAILY BOARDINGS BY STATION

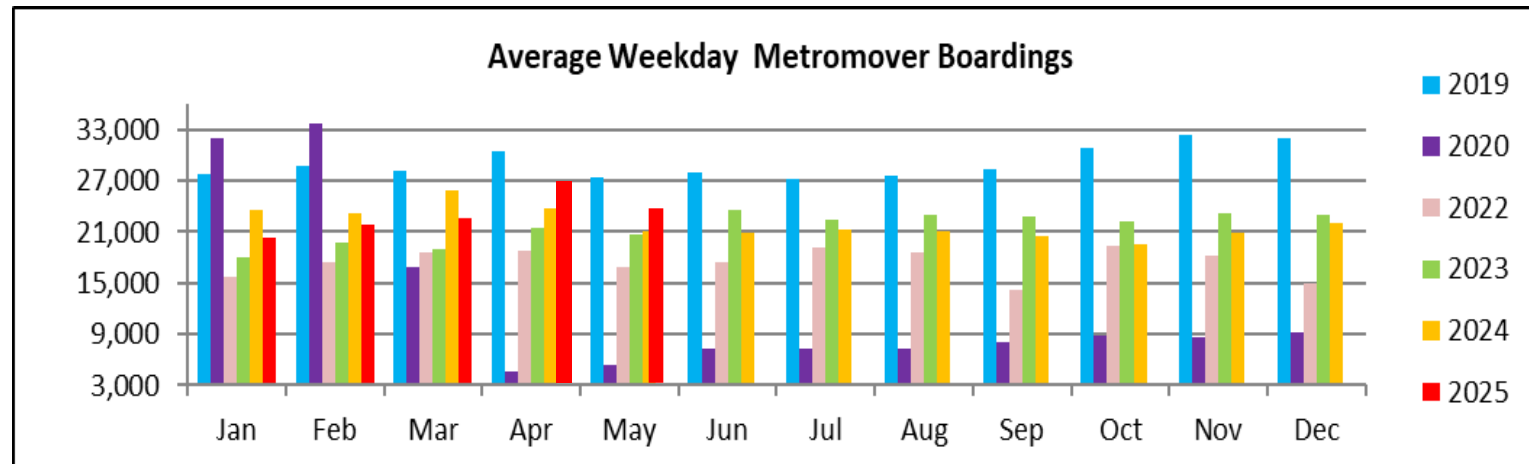
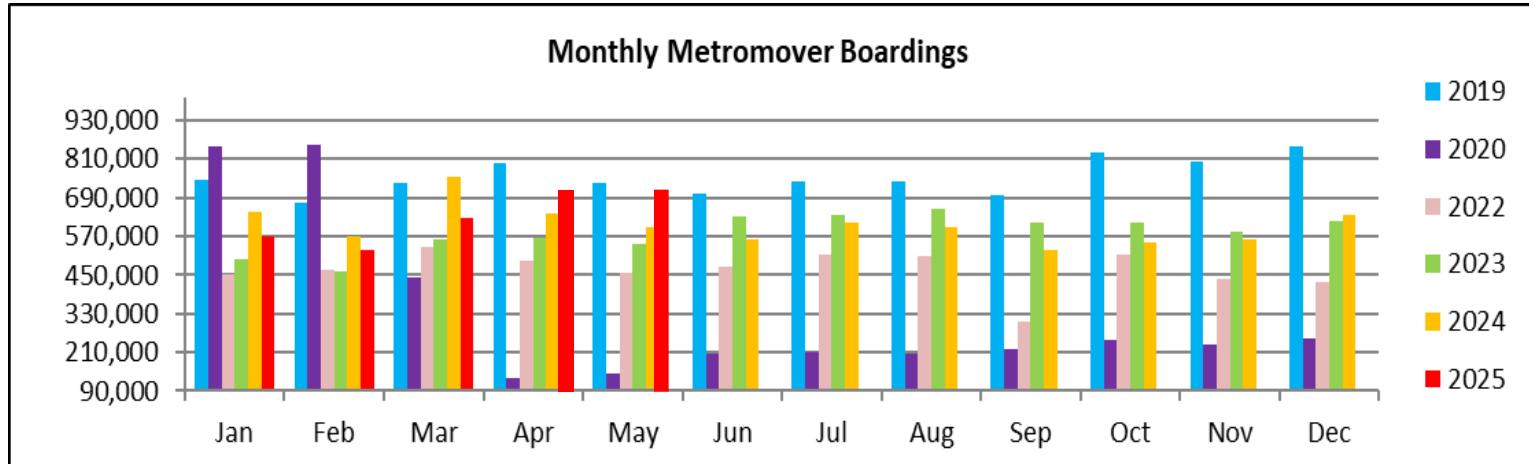
	Average Weekday	Average Weekday	Percent Change	Average Saturday	Average Saturday	Percent Change	Average Sunday	Average Sunday	Percent Change	Total Monthly	Total Monthly	Percent Change
STATIONS	May-25	May-24	25 vs 24	May-25	May-24	25 vs 24	May-25	May-24	25 vs 24	May-25	May-24	25 vs 24
Bay Front	1,953	2,057	-5.1%	1,708	1,452	17.6%	1,343	1,291	4.0%	56,872	58,285	-2.4%
Brickell	2,025	2,279	-11.1%	1,363	1,356	0.5%	1,189	1,353	-12.1%	56,109	63,253	-11.3%
College North	898	876	2.5%	599	551	8.7%	548	441	24.3%	24,930	24,114	3.4%
College Street-Bay S	1,375	1,364	0.8%	1,373	1,277	7.5%	1,167	1,156	1.0%	41,795	41,107	1.7%
Eighth Street	1,792	1,888	-5.1%	1,679	1,588	5.7%	1,456	1,502	-3.1%	53,642	55,772	-3.8%
Eleventh Street	642	332	93.4%	503	231	117.7%	515	262	96.6%	18,709	9,614	94.6%
Fifth Street	426	582	-26.8%	333	408	-18.4%	291	439	-33.7%	12,195	16,783	-27.3%
Financial District	969	130	645.4%	584	38	1436.8%	506	50	912.0%	26,261	3,333	687.9%
First Street	1,051	1,158	-9.2%	951	945	0.6%	821	870	-5.6%	31,162	33,894	-8.1%
Freedom Tower	902	661	36.5%	933	631	47.9%	709	711	-0.3%	27,343	20,562	33.0%
Government Center	5,228	1,439	263%	3,501	1,193	193.5%	2,817	974	189.2%	143,784	41,751	244.4%
Knight Center	583	542	7.6%	289	326	-11.3%	260	223	16.6%	15,313	14,671	4.4%
Miami	334	351	-4.8%	221	293	-24.6%	204	209	-2.4%	9,265	10,082	-8.1%
Museum Park	295	341	-13.5%	388	325	19.4%	323	344	-6.1%	9,725	10,524	-7.6%
Omni	1,631	1,528	6.7%	1,278	989	29.2%	1,159	1,081	7.2%	46,905	43,418	8.0%
Park West	132	522	-74.7%	4	406	-99.0%	51	430	-88.1%	3,132	15,351	-79.6%
Riverwalk	566	642	-11.8%	505	398	26.9%	384	421	-8.8%	16,506	18,041	-8.5%
School Board	631	1,231	-48.7%	516	780	-33.8%	493	842	-41.4%	18,435	34,790	-47.0%
Tenth Street	974	1,066	-8.6%	791	687	15.1%	626	651	-3.8%	27,892	29,864	-6.6%
Third Street	384	376	2.1%	287	411	-30.2%	304	380	-20.0%	11,094	11,814	-6.1%
Wilkie D Ferguson	1,544	1,456	6.0%	960	953	0.7%	881	727	21.2%	42,299	40,209	5.2%
TOTAL	24,335	20,821	16.9%	18,764	15,234	23.17%	16,044	14,355	12%	693,368	597,232	16%

(*) Some Metromover stations were closed for construction during the CY 2023-2025 period, due to construction work; associated were numerous power and data outages, including on weekends.

METROMOVER CUMULATIVE PERCENTAGE RIDERSHIP SHARE



TOTAL MONTHLY AND AVERAGE WEEKDAY RIDERSHIP YEAR OVER YEAR COMPARISON CHARTS – METROMOVER

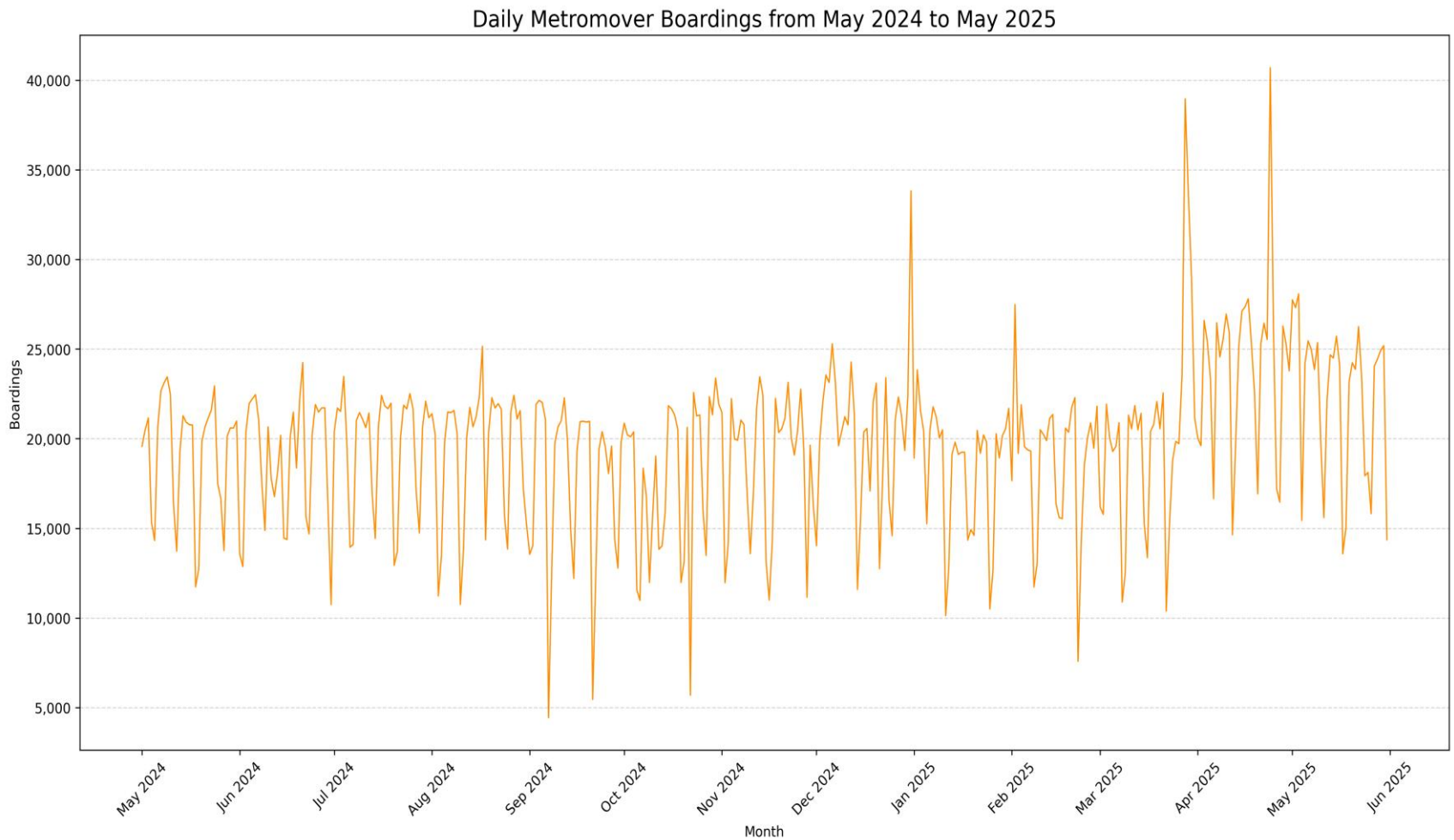


**“TOP 5 / BOTTOM 5” MOVER STATIONS AVERAGE WEEKDAY RIDERSHIP PERFORMANCE
YEAR OVER YEAR COMPARISONS**

Station	May-25	May-24	Absolute Delta (1)	Percent Delta
Government Center	5,228	1,439	3,789	263%
Financial District	969	130	839	645%
Eleventh Street	642	332	310	93%
Freedom Tower	902	661	241	36%
Omni	1,631	1,528	103	7%
School Board	631	1,231	-600	-49%
Park West	132	522	-390	-75%
Brickell	2,025	2,279	-254	-11%
Fifth Street	426	582	-156	-27%
First Street	1,051	1,158	-107	-9%

(1) Averages rounded to the nearest boarding.

DAILY METROMOVER RIDERSHIP (12-Month Period)



Special Transportation Services

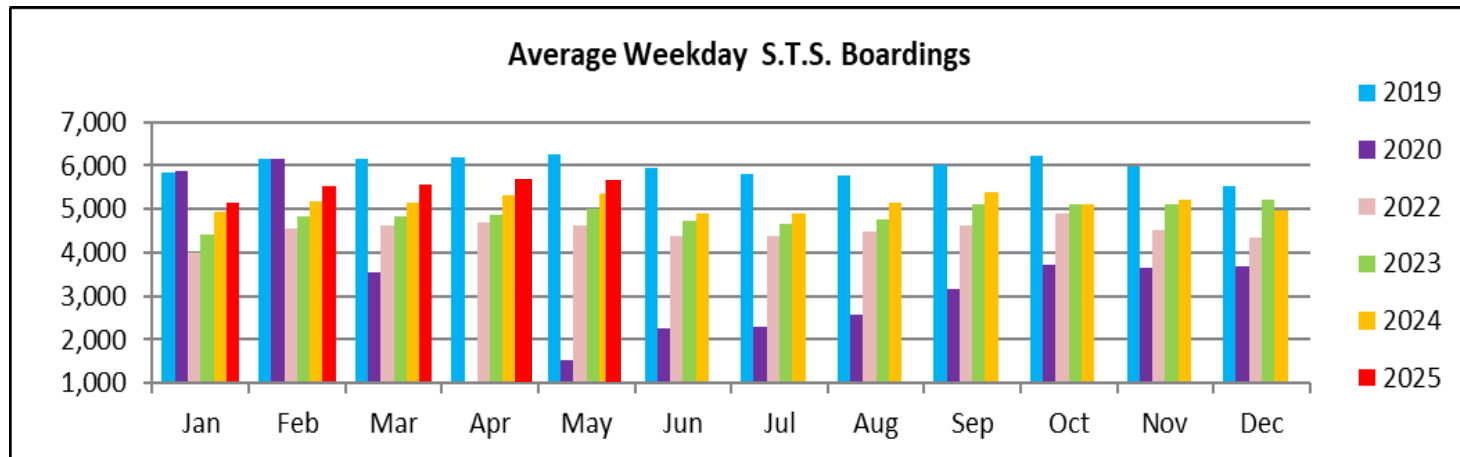
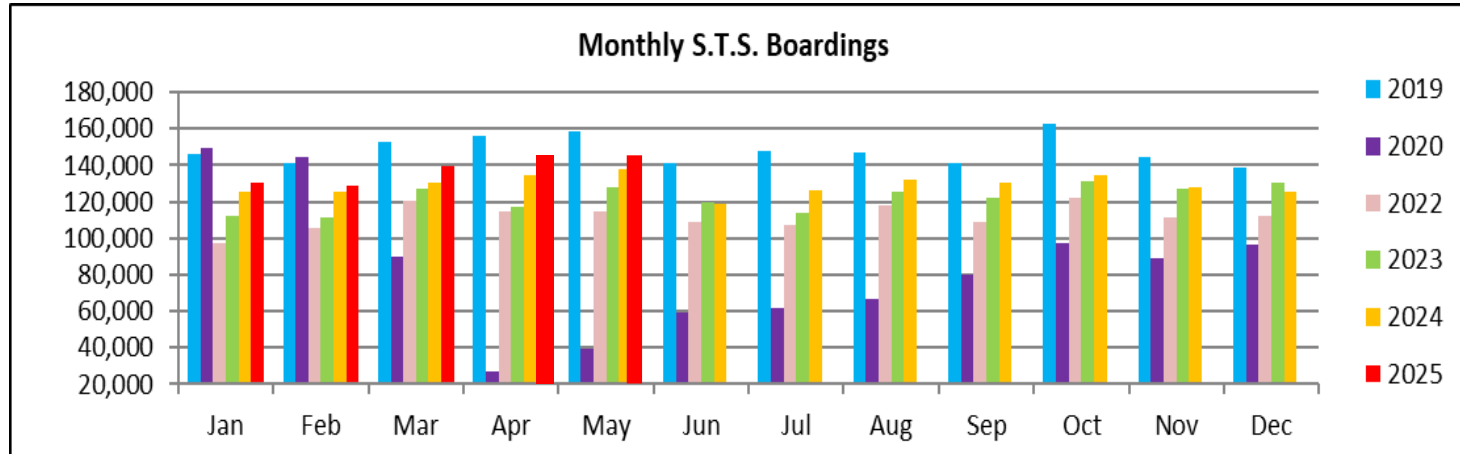


STS MONTHLY AND AVERAGE DAILY BOARDINGS
May 2025

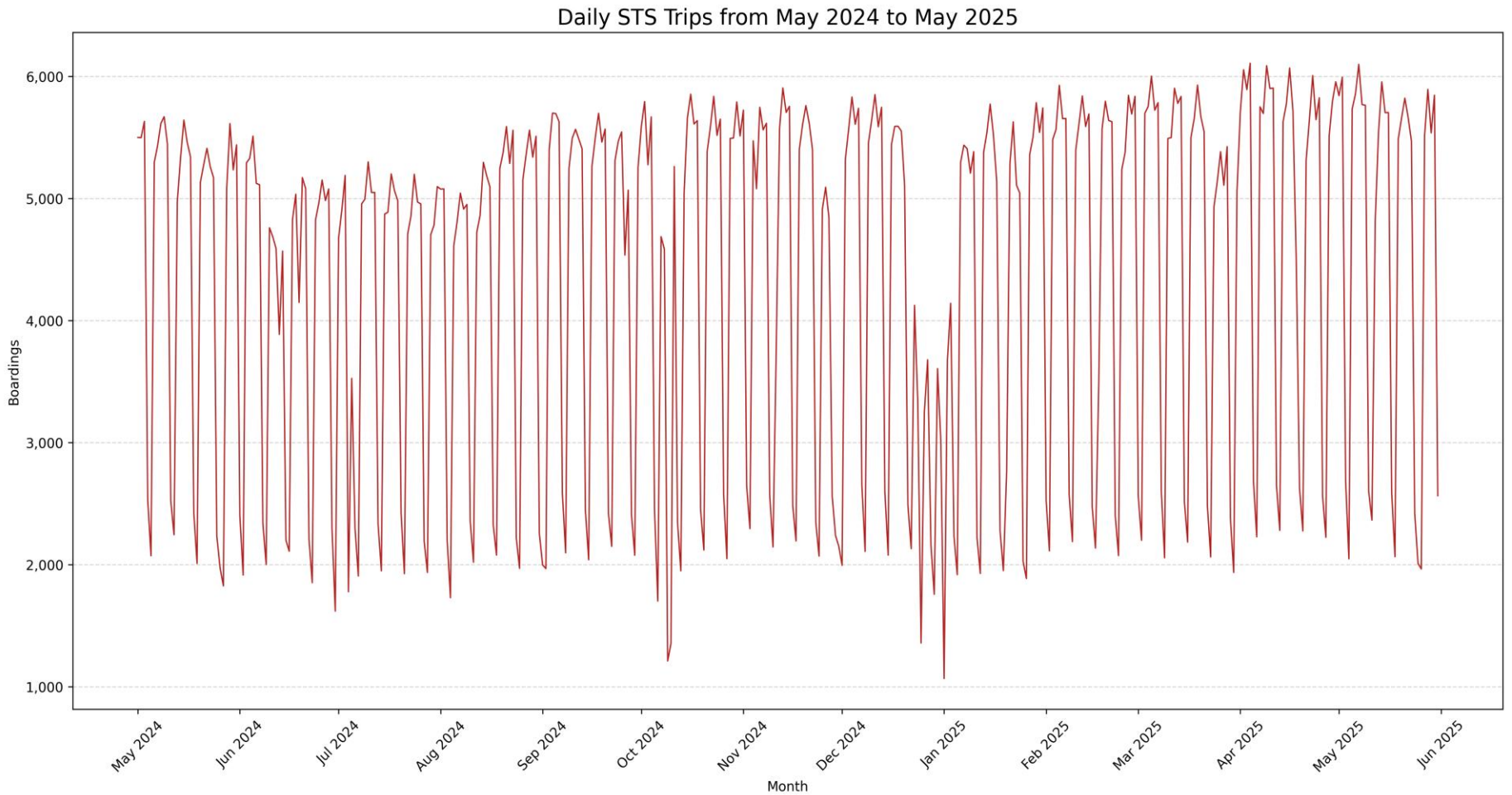
Measure	timeline	Ambulatory	Wheelchair	Total Clients (*)
Average Weekday	25-May	4,607	920	5,527
Average Saturday	25-May	2,125	446	2,571
Average Sunday	25-May	1,737	383	2,120
Total Monthly	25-May	118,943	24,010	143,953
Average Weekday	24-May	4,500	869	5,369
Average Saturday	24-May	2,017	413	2,430
Average Sunday	24-May	1,662	362	2,024
Total Monthly	24-May	115,381	22,577	137,958
Average Weekday	23-May	4,183	831	5,015
Average Saturday	23-May	1,732	396	2,127
Average Sunday	23-May	1,438	352	1,791
Total Monthly	23-May	106,154	21,628	127,782
% Change Current vs. April 2024 Weekday		2.38%	5.87%	2.94%
% Change Current vs. April 2024 Saturday		5.35%	7.99%	5.80%
% Change Current vs. April 2024 Sunday		4.51%	5.80%	4.74%
% Change Current vs. April 2024 Month Total		3.09%	6.35%	4.35%
% Change Current vs. April 2023 Weekday		10.14%	10.71%	10.21%
% Change Current vs. April 2023 Saturday		22.69%	12.63%	20.87%
% Change Current vs. April 2023 Sunday		20.79%	8.81%	18.37%
% Change Current vs. April 2023 Month Total		12.05%	11.01%	12.66%

(*) Trip count data provided by STS contractor.

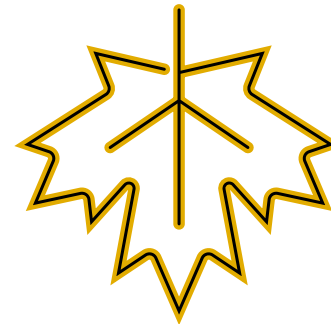
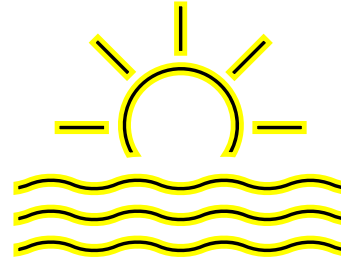
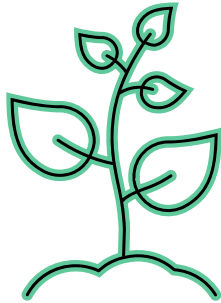
TOTAL MONTHLY AND AVERAGE WEEKDAY RIDERSHIP YEAR OVER YEAR COMPARISON CHARTS – SPECIAL TRANSPORTATION SERVICES (S.T.S.)



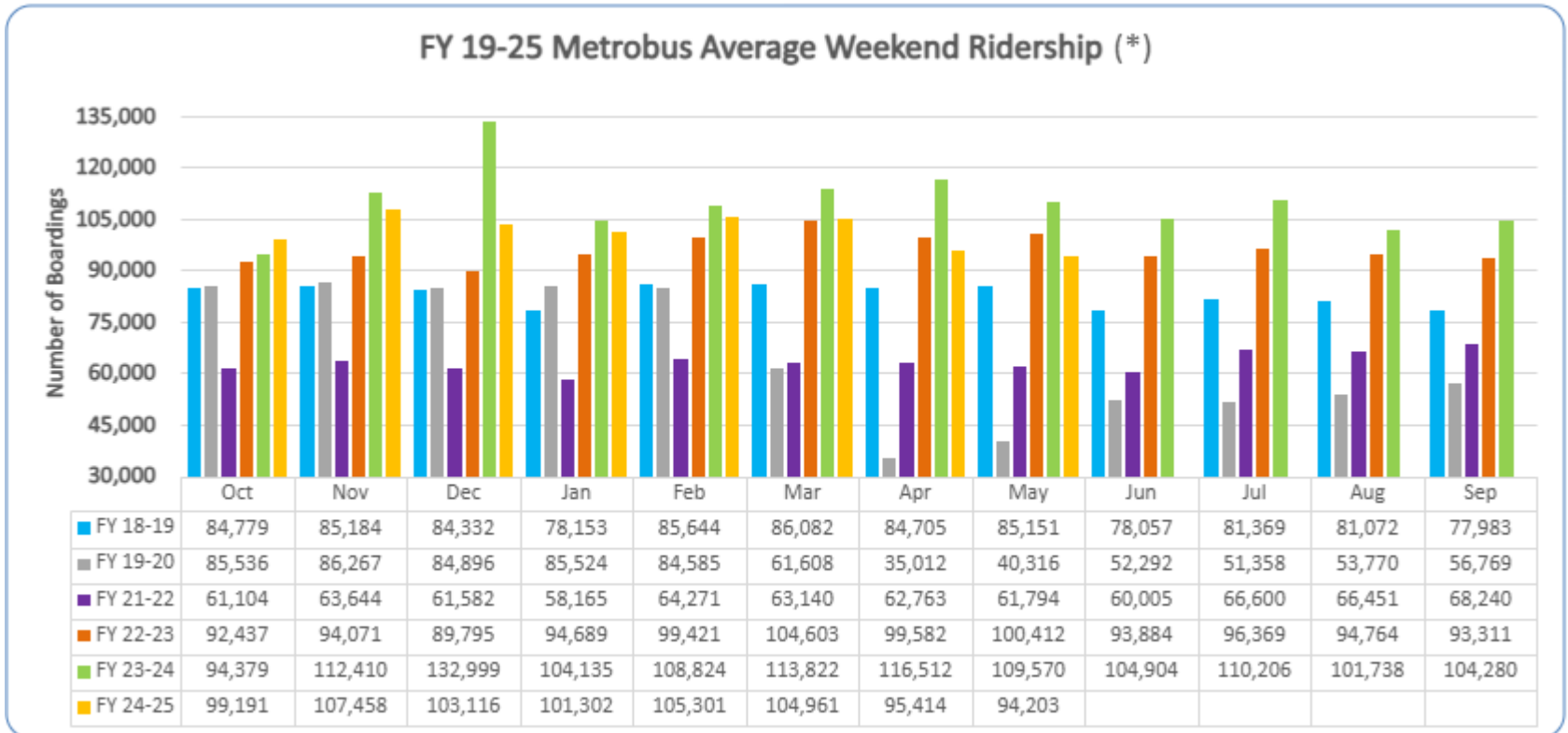
DAILY STS RIDERSHIP



Ridership Seasonality

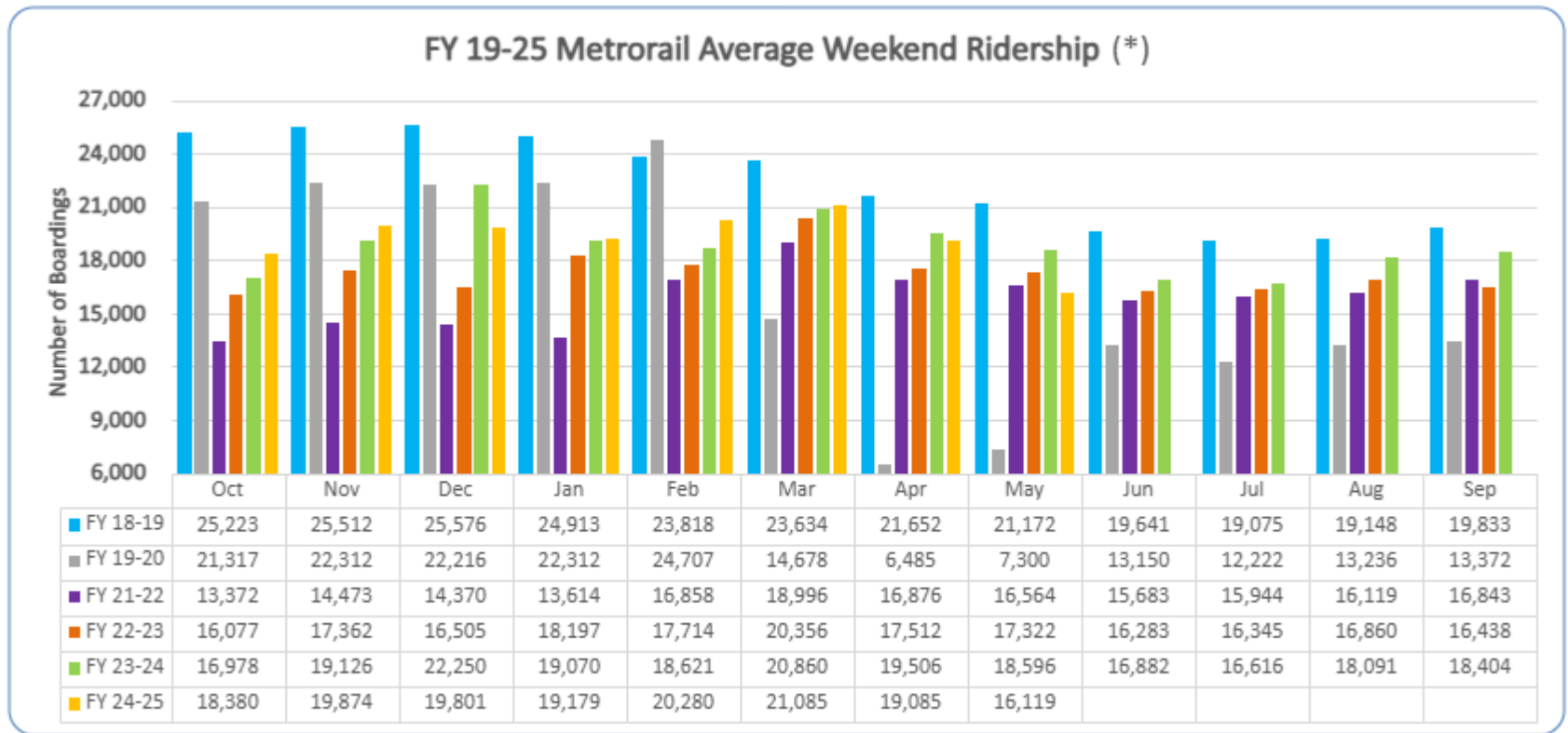


RIDERSHIP SEASONALITY – AVERAGE WEEKEND RIDERSHIP BY MONTH AND FISCAL YEAR FOR METROBUS



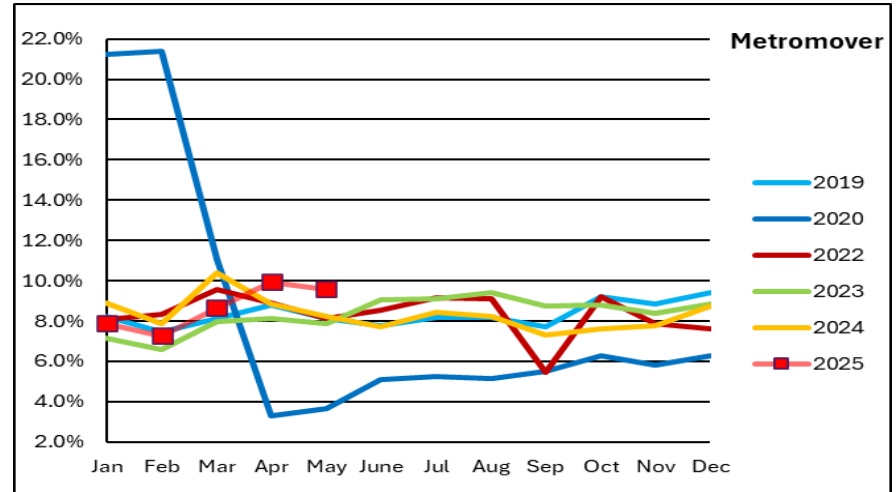
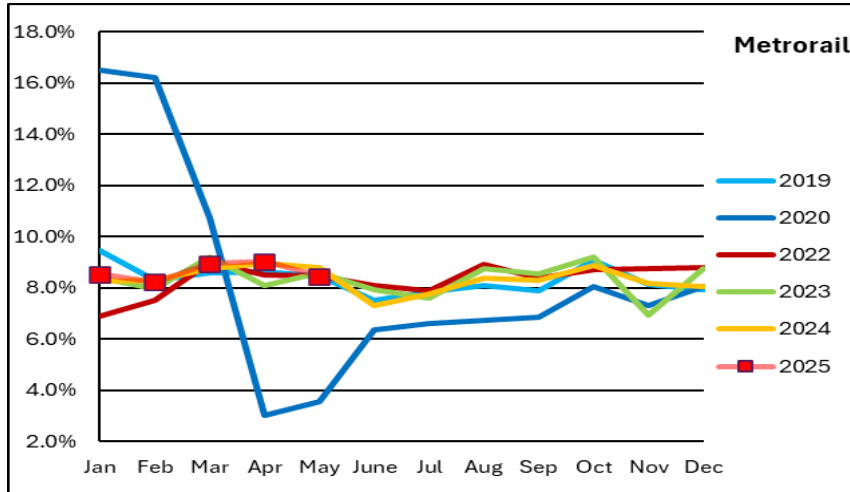
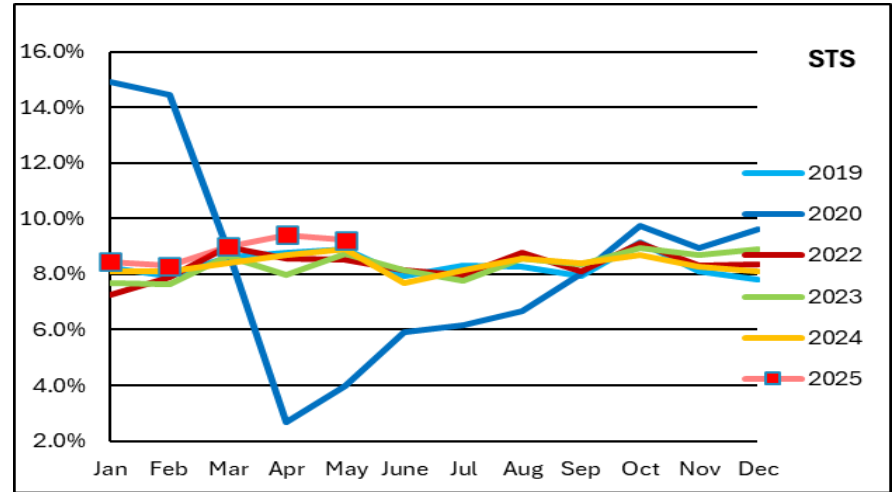
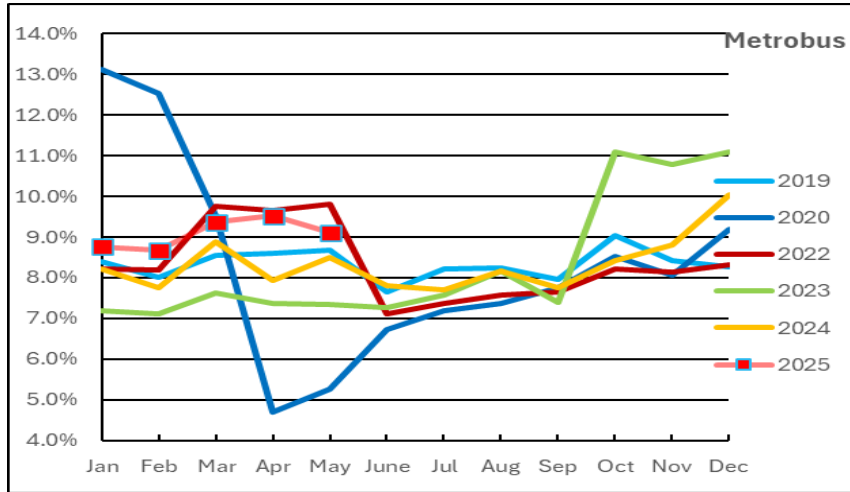
(*) Note: here, average weekend ridership for each month is defined as the average of average Saturday and average Sunday ridership; the pronounced increase beginning Nov-23 can be attributed to the launch of the Better Bus Network and the attendant free fares, which ended on New Year's Day 2024; the large jump from FY 21-22 to FY 22-23 can be largely attributed to the 10/01/22 switchover from farebox to APC reporting.

RIDERSHIP SEASONALITY – AVERAGE WEEKEND RIDERSHIP BY MONTH AND FISCAL YEAR FOR METRORAIL



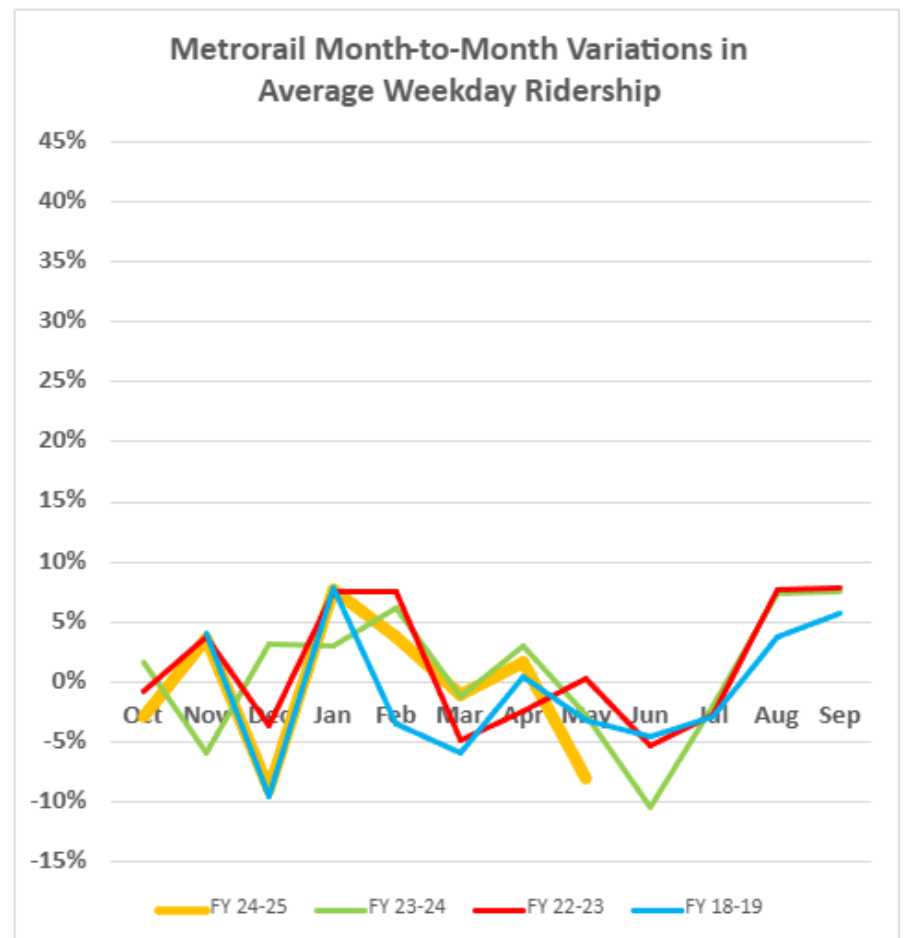
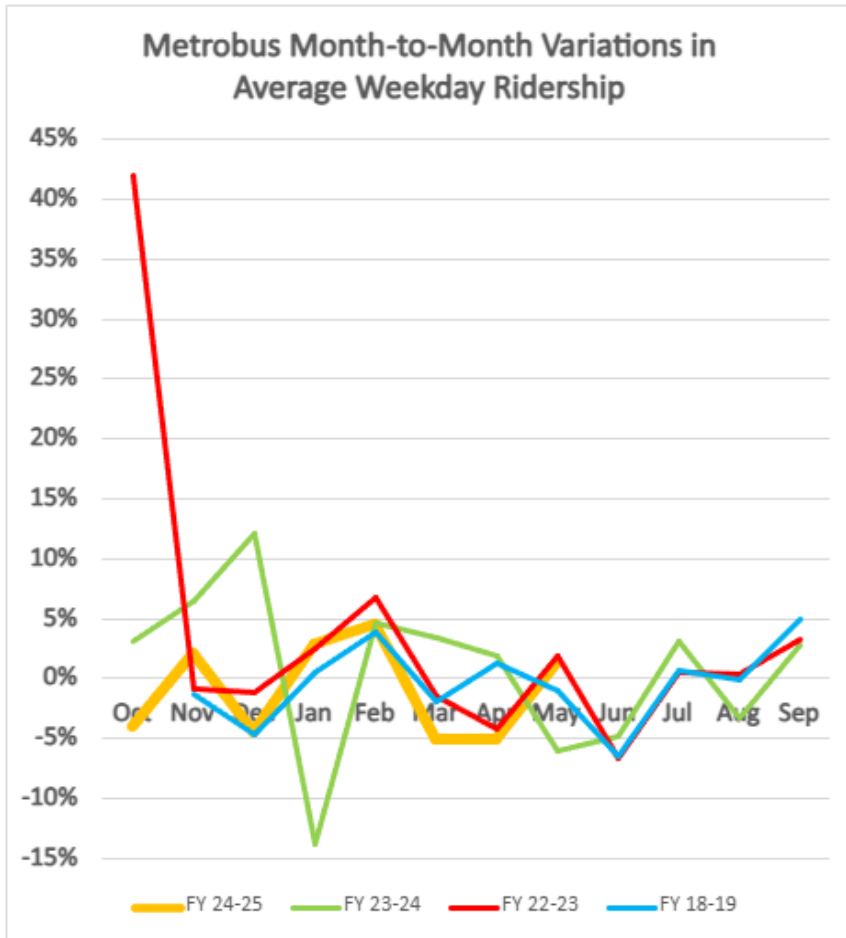
(*) Note: here, average weekend ridership for each month is defined as the average of average Saturday and average Sunday ridership; the pronounced increase beginning Nov-23 can be attributed to the launch of the Better Bus Network and the attendant free fares, which ended on New Year's Day 2024.

RIDERSHIP SEASONALITY – PERCENT SHARE OF TOTAL RIDERSHIP BY MONTH AND CALENDAR YEAR FOR EACH MODE



Note: the prominent dip seen in the beginning in the spring of 2020 is due to the SARS-CoV-2 pandemic. The sharp increase in Metrobus percentage share beginning October 2022 is due to the switchover from farebox to automatic passenger counter reporting. The pronounced rise beginning November 2023 for Metrobus and Metrorail can be attributed to the launch of the Better Bus Network and the attendant free fares, which ended on New Year's Day 2024.

RIDERSHIP VOLATILITY – MONTH-TO-MONTH AVERAGE WEEKDAY RIDERSHIP PERCENTAGE CHANGES FOR METROBUS AND METROLRAIL



Note: The pronounced rise beginning Nov-23 for Metrobus and Metrorail can be attributed to the launch of the Better Bus Network and the attendant free fares, which ended on New Year's Day 2024, leading to the subsequent pronounced dip. For Metrobus, the very high peak at the start of FY 22-23 is due to the switchover from farebox to automatic passenger counter ridership reporting at the very beginning of that fiscal year (10/01/22).