



TRANSPORTATION AND PUBLIC WORKS

RIDERSHIP TECHNICAL REPORT

Division of Performance Analysis



June 2025

Table of Contents

<i>Table of Contents</i>	2-3
All Modes Overview	4
Total Monthly Weekday, Saturday and Sunday Monthly Boardings By Mode	5
Average Weekday, Saturday and Sunday Boardings by Mode	6
Metrobus Total Monthly Ridership Comparisons by Fiscal Year	7
Metrorail Total Monthly Ridership Comparisons by Fiscal Year	8
Metromover Total Monthly Ridership Comparisons by Fiscal Year	9
STS Total Monthly Ridership Comparisons by Fiscal Year	10
All-Modes Combined Total Monthly Ridership Comparisons By Fiscal Year	11
All Modes Combined Total Monthly and Average Weekday Ridership – Year over Year Comparison Charts	12
Average Weekday Ridership – Modal Splits	13
Daily Ridership for All Modes Combined since 2/1/20	14
Metrobus	15
Better Bus Network (BBN, 11/13/2023 Lineup) Bus Route Changes, Pt 1 and Pt 2	16-17
Metrobus Average Weekday Boardings by Route	18-20
Metrobus Average Saturday Boardings by Route	21-22
Metrobus Average Sunday Boardings by Route	23-24
Metrobus Monthly Total Boardings by Route	25-27
Bus Ridership by Route Service Type Lineups Comparison (month-over-month & month-over-17 months)	28-31
Bus Routes as Ranked by Percentage of Average Weekday Ridership	32
Metrobus Cumulative Percentage Average Weekday Ridership Share by Route (Top 75%)	33
Metrobus Estimated Weekday Ridership since 02/01/20 (two-week moving averages)	34
Total Monthly and Average Weekday Bus Ridership – Year over Year Comparison Charts	35
Bus “Top 10 / Bottom 10” Bus Routes Average Weekday Ridership Performance – Year-over-Year Comparisons	36
Bus “Top 10 / Bottom 10” Bus Routes Sets Average Weekday Ridership Performance – Year-over-Year Comparisons	37
Bus “Top 10 / Bottom 10” Bus Routes Sets Average Weekday Ridership Performance – Month-over-17 Month Comparisons	38
Daily Metrobus Ridership since 2/1/20	39
Metrobus Parking Patronage Summary	40

Table of Contents (continued)

Metrorail	41
Metrorail Average Weekday Boardings by Station	42
Metrorail Average Saturday Boardings by Station	43
Metrorail Average Sunday Boardings by Station	44
Metrorail Total Monthly Boardings by Station	45
Metrorail Cumulative Percentage Average Weekday Ridership Share	46
Metrorail Weekday Ridership since 02/01/20 (two-week moving averages)	47
Total Monthly and Average Weekday Rail Ridership – Year over Year Comparison Charts	48
“Top 5 / Bottom 5” Stations Average Weekday Ridership Performance	49
Daily Metrorail Ridership since 2/1/20	50
Metrorail Parking Patronage Summary	51
Metromover	52
Monthly and Average Daily Mover Boardings by Station	53
Metromover Cumulative Percentage Average Weekday Ridership Share	54
Total Monthly and Average Weekday Mover Ridership – Year over Year Comparison Charts	55
“Top 5 / Bottom 5” Stations Average Weekday Ridership Performance	56
Special Transportation Services (STS)	57
STS Monthly and Average Daily Boardings	58
Total Monthly and Average Weekday STS Ridership – Year over Year Comparison Charts	59
Daily STS Ridership since 2/1/20	60
Ridership Seasonality	61
Ridership Seasonality – Average Weekend Ridership by Month and Fiscal Year for Metrobus	62
Ridership Seasonality – Average Weekend Ridership by Month and Fiscal Year for Metrorail	63
Ridership Volatility – Month-to-Month Average Weekday Ridership Percentage Changes for Metrobus and Metrorail	64

All Modes Overview



TOTAL MONTHLY WEEKDAY, SATURDAY AND SUNDAY BOARDINGS BY MODE
June 2025

TRAVEL MODE	MONTH'S TOTAL WEEKDAYS RIDERSHIP	MONTH'S TOTAL SATURDAYS RIDERSHIP	MONTH'S TOTAL SUNDAYS RIDERSHIP	TOTAL MONTHLY RIDERSHIP	% CHANGE vs June-24 TOTAL MONTH RIDERSHIP
METROBUS (1)	3,492,585	434,483	399,819	4,326,887	-10.0%
METRORAIL (2)	982,887	79,890	70,346	1,133,123	3.8%
METROMOVER	467,319	45,128	66,388	578,835	3.4%
STS PARATRANSIT (3)	110,142	10,018	10,831	130,991	10.2%
TOTAL	5,052,933	569,519	547,384	6,169,836	-6.2%

- (1) Metrobus ridership reporting through automatic passenger counters coupled with a new enhanced sensor system resumed on October 1, 2022.
- (2) Metrorail fares resumed on June 1, 2021, following a 14-month period of fare-free rides as a result of the SARS-CoV-2 pandemic. The NextFare System faregate data replaced the video data as Rail ridership data of record starting on that date, until free fares were reinstated for the Better Bus Network launch on 11/13/23. The NextFare System Rail faregate data collection and reporting resumed on New Year's Day 2024.
- (3) Paratransit (STS) ridership data as reported by the contractor and subsequently audited by the Department.

AVERAGE WEEKDAY, SATURDAY AND SUNDAY BOARDINGS BY MODE
June 2025

Travel Mode	Average Weekday	Average Saturday	Average Sunday	% Change vs. June-24 Weekday	% Change vs. June-24 Saturday	% Change vs. June-24 Sunday
METROBUS	159,209	100,751	76,112	-15.3%	-19.6%	-9.9%
METRORAIL	46,804	19,973	14,069	0.1%	1.7%	-0.4%
METROMOVER	22,254	10,508	11,263	6.6%	-32.1%	-16.6%
STS PARATRANSIT	5,245	2,505	2,166	7.1%	9.4%	14.1%
Totals	233,512	133,737	103,610	-1.4%	-40.7%	-12.8%

(*) Average ridership is calculated and published only for those days and stations or routes with nontrivial amounts of reported data.

METROBUS TOTAL MONTHLY RIDERSHIP COMPARISONS BY FISCAL YEAR

Bus Month	FY 19	FY 20	FY 21	FY 22	FY 23	FY 24	Variance FY 25 19 to 20 (*)	Variance 20 to 21 (*)	Variance 21 to 22	Variance 22 to 23 (**)	Variance 23 to 24	Variance 24 to 25	Variance 19 TO 25
Oct	4,554,886	4,507,012	2,805,139	3,081,157	4,679,725	4,912,151	5,043,329	-1.1%	-37.8%	9.8%	51.9%	5.0%	10.7%
Nov	4,245,535	4,197,225	2,651,290	3,056,726	4,549,666	5,135,172	4,835,529	-1.1%	-36.8%	15.3%	48.8%	12.9%	13.9%
Dec	4,081,581	4,126,990	3,022,530	3,123,883	4,677,460	5,857,057	4,773,057	1.1%	-26.8%	3.4%	49.7%	25.2%	16.9%
Jan	4,195,911	4,316,998	3,082,746	3,029,055	4,785,128	5,103,257	4,973,281	2.9%	-28.6%	-1.7%	58.0%	6.6%	18.5%
Feb	3,994,019	4,123,083	3,076,966	2,995,789	4,526,317	5,053,665	4,715,948	3.2%	-25.4%	-2.6%	51.1%	11.7%	18.1%
Mar	4,266,768	3,136,162	3,660,639	3,218,562	5,183,872	5,461,317	4,907,536	-26.5%	16.7%	-12.1%	61.1%	5.4%	15.0%
Apr	4,291,135	1,544,316	3,625,048	3,105,797	4,618,302	5,548,614	4,804,588	-64.0%	134.7%	-14.3%	48.7%	20.1%	12.0%
May	4,330,922	1,734,609	3,683,343	3,097,574	4,953,197	5,308,711	4,626,574	-59.9%	112.3%	-15.9%	59.9%	7.2%	6.8%
Jun	3,823,863	2,210,725	2,672,570	3,064,059	4,545,050	4,805,039	4,326,887	-42.2%	20.9%	14.6%	48.3%	5.7%	13.2%
Jul	4,094,906	2,366,749	2,769,907	3,189,994	4,484,458	5,230,894		-42.2%	17.0%	15.2%	40.6%	16.6%	
Aug	4,109,613	2,422,014	2,843,552	3,442,006	4,756,063	5,051,346		-41.1%	17.4%	21.0%	38.2%	6.2%	
Sep	3,971,220	2,546,923	2,877,110	3,123,572	4,525,426	4,860,066		-35.9%	13.0%	8.6%	44.9%	7.4%	
FY Total	49,960,359	37,232,806	36,770,840	37,528,174	56,284,664	62,327,289		-25.5%	-1.2%	2.1%	50.0%	10.7%	

(*) The severe losses in ridership beginning in March 2020 are due to the SARS-CoV-2 pandemic, followed by an overall gradual recovery beginning in March 2021.

(**) The consistently very high increases seen at the start of FY 23 are largely due to the 10/01/2022 switchover from fareboxes to Automatic Passenger Counters in estimating ridership on the directly operated (non-contracted) bus routes.

METRORAIL TOTAL MONTHLY RIDERSHIP COMPARISONS BY FISCAL YEAR

Rail Month	FY 19	FY 20	FY 21	FY 22	FY 23	FY 24	FY 25	Variance 19 to 20 (*)	Variance 20 to 21 (*)	Variance 21 to 22	Variance 22 to 23	Variance 23 to 24	Variance 24 to 25	Variance 19 TO 25
Oct	1,757,225	1,643,166	769,525	844,383	1,053,191	1,237,096	1,321,113	-6.5%	-53.2%	9.7%	24.7%	17.5%	6.8%	-24.8%
Nov	1,656,929	1,469,448	699,492	850,881	1,055,066	935,121	1,220,720	-11.3%	-52.4%	21.6%	24.0%	-11.4%	30.5%	-26.3%
Dec	1,553,804	1,433,928	769,194	860,436	1,063,096	1,177,272	1,202,284	-7.7%	-46.4%	11.9%	23.6%	10.7%	2.1%	-22.6%
Jan	1,708,695	1,576,340	799,119	832,924	1,127,340	1,233,350	1,273,616	-7.7%	-49.3%	4.2%	35.3%	9.4%	3.3%	-25.5%
Feb	1,501,458	1,549,118	730,792	905,162	1,072,791	1,240,316	1,227,182	3.2%	-52.8%	23.9%	18.5%	15.6%	-1.1%	-18.3%
Mar	1,554,851	1,027,319	917,097	1,084,978	1,239,336	1,302,854	1,334,099	-33.9%	-10.7%	18.3%	14.2%	5.1%	2.4%	-14.2%
Apr	1,559,446	287,803	827,414	1,027,139	1,087,816	1,336,511	1,347,928	-81.5%	187.5%	24.1%	5.9%	22.9%	0.9%	-13.6%
May	1,531,597	337,696	887,111	1,023,322	1,151,819	1,314,112	1,260,681	-78.0%	162.7%	15.4%	12.6%	14.1%	-4.1%	-17.7%
Jun	1,359,966	608,758	723,469	975,477	1,066,861	1,092,060	1,133,123	-55.2%	18.8%	34.8%	9.4%	2.4%	3.8%	-16.7%
Jul	1,419,158	632,964	722,159	953,331	1,022,937	1,159,375		-55.4%	14.1%	32.0%	7.3%	13.3%		
Aug	1,463,646	641,275	749,578	1,076,490	1,174,138	1,247,019		-56.2%	16.9%	43.6%	9.1%	6.2%		
Sep	1,427,726	654,244	795,749	1,012,331	1,146,864	1,240,457		-54.2%	21.6%	27.2%	13.3%	8.2%		
FY Total	18,494,501	11,862,059	9,390,699	11,446,854	13,261,255	14,515,543		-35.9%	-20.8%	21.9%	15.9%	9.5%		

(*) The severe losses in ridership beginning in March 2020 are due to the SARS-CoV-2 pandemic, followed by an overall gradual recovery beginning in April 2021.

METROMOVER TOTAL MONTHLY RIDERSHIP COMPARISONS BY FISCAL YEAR

Mover Month	FY 19	FY 20	FY 21	FY 22	FY 23	FY 24	FY 25	Variance 9 to 20 (*)	Variance 20 to 21 (*)	Variance 21 to 22	Variance 22 to 23	Variance 23 to 24	Variance 24 to 25	19 TO 25
Oct	790,533	831,234	250,044	389,065	514,308	614,479	550,054	5.1%	-69.9%	55.6%	32.2%	19.5%	-10.5%	-30.4%
Nov	735,198	799,632	232,422	418,929	439,150	584,887	561,326	8.8%	-70.9%	80.2%	4.8%	33.2%	-4.0%	-23.6%
Dec	767,239	849,832	251,019	450,320	426,073	616,455	634,296	10.8%	-70.5%	79.4%	-5.4%	44.7%	2.9%	-17.3%
Jan	746,728	847,773	255,968	451,566	498,566	644,639	571,831	13.5%	-69.8%	76.4%	10.4%	29.3%	-11.3%	-23.4%
Feb	675,160	855,398	260,332	465,968	459,264	570,242	526,198	26.7%	-69.6%	79.0%	-1.4%	24.2%	-7.7%	-22.1%
Mar	737,814	441,200	302,502	535,857	558,396	753,107	626,418	-40.2%	-31.4%	77.1%	4.2%	34.9%	-16.8%	-15.1%
Apr	795,696	130,549	310,772	495,982	565,943	640,281	720,763	-83.6%	138.1%	59.6%	14.1%	13.1%	12.6%	-9.4%
May	734,645	146,454	292,922	455,120	547,948	597,232	693,368	-80.1%	100.0%	55.4%	20.4%	9.0%	16.1%	-5.6%
Jun	701,318	203,637	286,145	477,286	632,423	559,913	578,835	-71.0%	40.5%	66.8%	32.5%	-11.5%	3.4%	-17.5%
Jul	739,814	210,596	368,847	512,094	635,954	610,437		-71.5%	75.1%	38.8%	24.2%	-4.0%		
Aug	739,785	205,995	344,319	508,359	657,267	597,361		-72.2%	67.1%	47.6%	29.3%	-9.1%		
Sep	699,879	219,696	331,915	305,185	610,810	527,660		-68.6%	51.1%	-8.1%	100.1%	-13.6%		
FY Total	8,863,809	5,741,996	3,487,207	5,465,731	6,546,102	7,316,693		-35.2%	-39.3%	56.7%	19.8%	11.8%		

(*) The severe losses in ridership beginning in March 2020 are due to the SARS-CoV-2 pandemic, followed by an overall gradual recovery beginning in April 2021.

SPECIAL TRANSPORTATION SERVICES (STS) TOTAL MONTHLY RIDERSHIP COMPARISONS BY FISCAL YEAR

STS Month	FY 19	FY 20	FY 21	FY 22	FY 23	FY 24	FY 25	Variance 19 to 20 (*)	Variance 20 to 21 (*)	Variance 21 to 22	Variance 22 to 23	Variance 23 to 24	Variance 24 to 25	Variance 19 to 25
Oct	162,564	162,704	97,388	115,122	122,189	130,958	134,852	0.1%	-40.1%	18.2%	6.1%	7.2%	3.0%	-17.0%
Nov	145,653	144,366	89,387	110,289	111,578	127,025	127,979	-0.9%	-38.1%	23.4%	1.2%	13.8%	0.8%	-12.1%
Dec	136,110	138,642	96,366	104,496	112,019	130,093	125,724	1.9%	-30.5%	8.4%	7.2%	16.1%	-3.4%	-7.6%
Jan	146,268	149,114	97,928	97,541	112,632	125,513	130,857	1.9%	-34.3%	-0.4%	15.5%	11.4%	4.3%	-10.5%
Feb	141,396	144,392	98,285	105,706	111,748	125,732	128,725	2.1%	-31.9%	7.6%	5.7%	12.5%	2.4%	-9.0%
Mar	153,191	89,634	112,930	120,718	126,819	130,203	139,482	-41.5%	26.0%	6.9%	5.1%	2.7%	7.1%	-8.9%
Apr	155,808	26,877	120,122	114,912	116,882	134,677	146,010	-82.7%	346.9%	-4.3%	1.7%	15.2%	8.4%	-6.3%
May	158,665	39,654	118,636	114,505	127,782	137,958	142,978	-75.0%	199.2%	-3.5%	11.6%	8.0%	3.6%	-9.9%
Jun	141,320	59,093	112,397	109,054	119,527	118,860	130,991	-58.2%	90.2%	-3.0%	9.6%	-0.6%	10.2%	-7.3%
Jul	148,232	61,765	110,059	107,188	113,623	126,391		-58.3%	78.2%	-2.6%	6.0%	11.2%		
Aug	147,331	66,563	110,766	117,941	125,510	132,503		-54.8%	66.4%	6.5%	6.4%	5.6%		
Sep	141,387	80,346	115,406	108,788	122,065	130,244		-43.2%	43.6%	-5.7%	12.2%	6.7%		
FY Total	1,777,925	1,163,150	1,279,670	1,326,260	1,422,374	1,550,157		-34.6%	10.0%	3.6%	7.2%	9.0%		

(*) The severe losses in ridership beginning in March 2020 are due to the SARS-CoV-2 pandemic, followed by an overall gradual recovery beginning in April 2021.

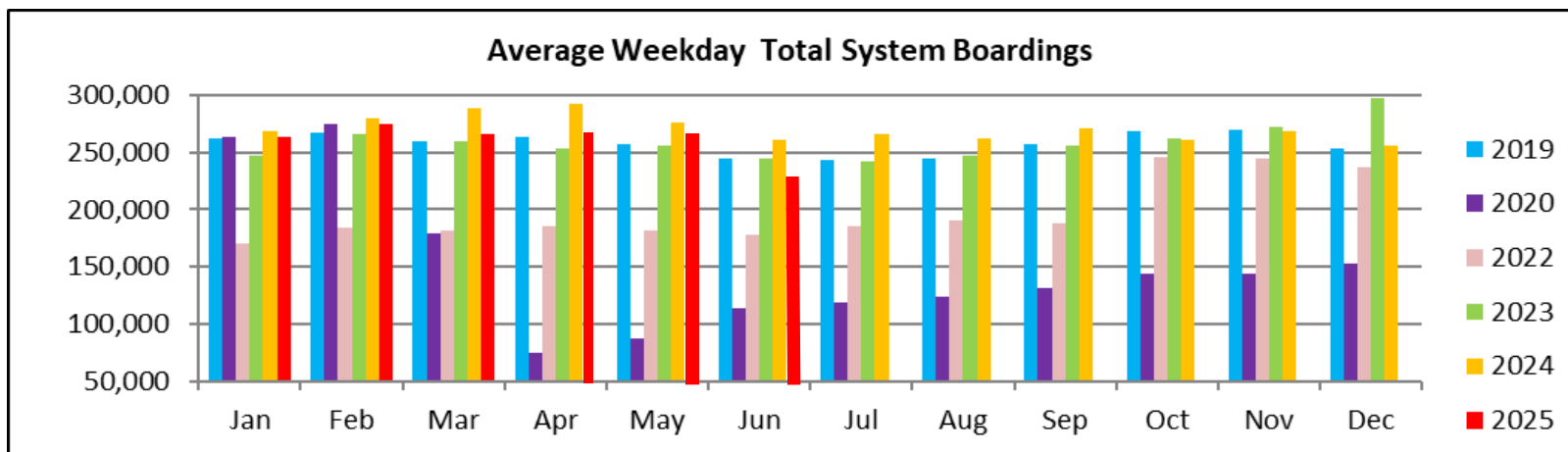
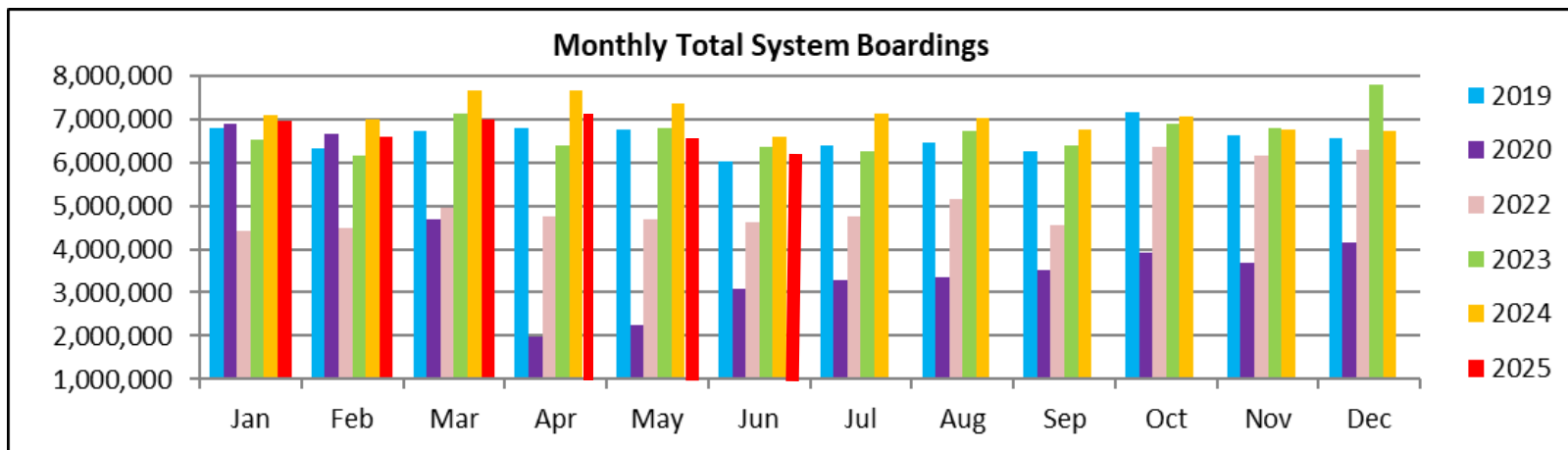
ALL-MODES COMBINED TOTAL MONTHLY RIDERSHIP COMPARISONS BY FISCAL YEAR

All Modes Month	FY 19	FY 20	FY 21	FY 22	FY 23	FY 24	FY 25	Variance (*) 19 TO 20	Variance (*) 20 TO 21	Variance /ariance (**) 21 TO 22	Variance 22 TO 23	Variance 23 TO 24	Variance 24 TO 25	Variance 19 TO 25
Oct	7,265,208	7,144,116	3,922,096	4,429,727	6,369,413	6,894,684	7,049,348	-1.7%	-45.1%	12.9%	43.8%	8.2%	2.2%	-3.0%
Nov	6,783,315	6,610,671	3,672,591	4,436,825	6,155,460	6,782,205	6,745,554	-2.5%	-44.4%	20.8%	38.7%	10.2%	-0.5%	-0.6%
Dec	6,538,734	6,549,392	4,139,109	4,539,135	6,278,648	7,780,877	6,735,361	0.2%	-36.8%	9.7%	38.3%	23.9%	-13.4%	3.0%
Jan	6,797,602	6,890,225	4,235,761	4,411,086	6,523,666	7,106,759	6,949,585	1.4%	-38.5%	4.1%	47.9%	8.9%	-2.2%	2.2%
Feb	6,312,033	6,671,991	4,166,375	4,472,625	6,170,120	6,989,955	6,598,053	5.7%	-37.6%	7.4%	38.0%	13.3%	-5.6%	4.5%
Mar	6,712,624	4,694,315	4,993,168	4,960,115	7,108,423	7,647,481	7,007,535	-30.1%	6.4%	-0.7%	43.3%	7.6%	-8.4%	4.4%
Apr	6,802,085	1,989,545	4,883,356	4,743,830	6,388,943	7,660,083	7,019,287	-70.8%	145.5%	-2.9%	34.7%	19.9%	-8.4%	3.2%
May	6,755,829	2,258,413	4,982,012	4,690,521	6,780,746	7,358,013	6,723,601	-66.6%	120.6%	-5.9%	44.6%	8.5%	-8.6%	-0.5%
Jun	6,026,467	3,082,213	3,794,581	4,625,876	6,363,861	6,575,872	6,169,836	-48.9%	23.1%	21.9%	37.6%	3.3%	-6.2%	2.4%
Jul	6,402,110	3,272,074	3,970,972	4,762,607	6,256,972	7,127,097		-48.9%	21.4%	19.9%	31.4%	13.9%		
Aug	6,460,375	3,335,847	4,048,215	5,144,796	6,712,978	7,028,229		-48.4%	21.4%	27.1%	30.5%	4.7%		
Sep	6,240,212	3,501,209	4,120,180	4,549,876	6,405,165	6,758,427		-43.9%	17.7%	10.4%	40.8%	5.5%		
FY Total	79,096,594	56,000,011	50,928,416	55,767,019	77,514,395	85,709,682		-29.2%	-9.1%	9.5%	39.0%	10.6%		

(*) The severe losses in ridership beginning in March 2020 are due to the SARS-CoV-2 pandemic, followed by an overall gradual recovery beginning in March 2021.

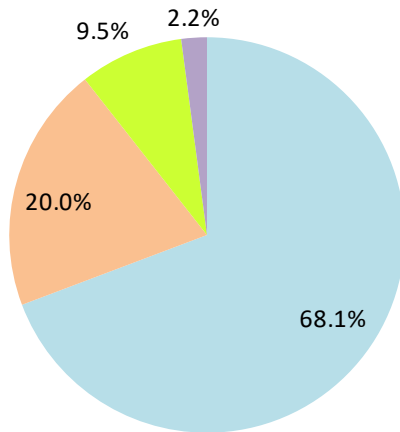
(**) The consistently very high increases seen at the start of FY 23 are largely due to the 10/01/2022 switchover from fareboxes to Automatic Passenger Counters in estimating ridership on the directly operated (non-contracted) bus routes.

TOTAL MONTHLY AND AVERAGE WEEKDAY RIDERSHIP YEAR OVER YEAR COMPARISON CHARTS – ALL MODES COMBINED



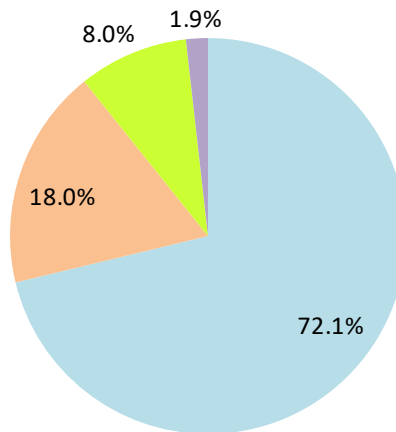
AVERAGE WEEKDAY RIDERSHIP - MODAL SPLITS

June 2025



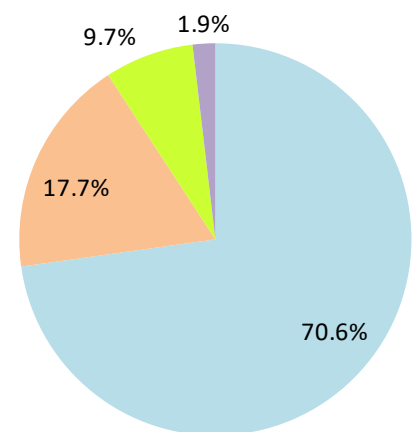
boardings

June 2024



boardings

June 2023

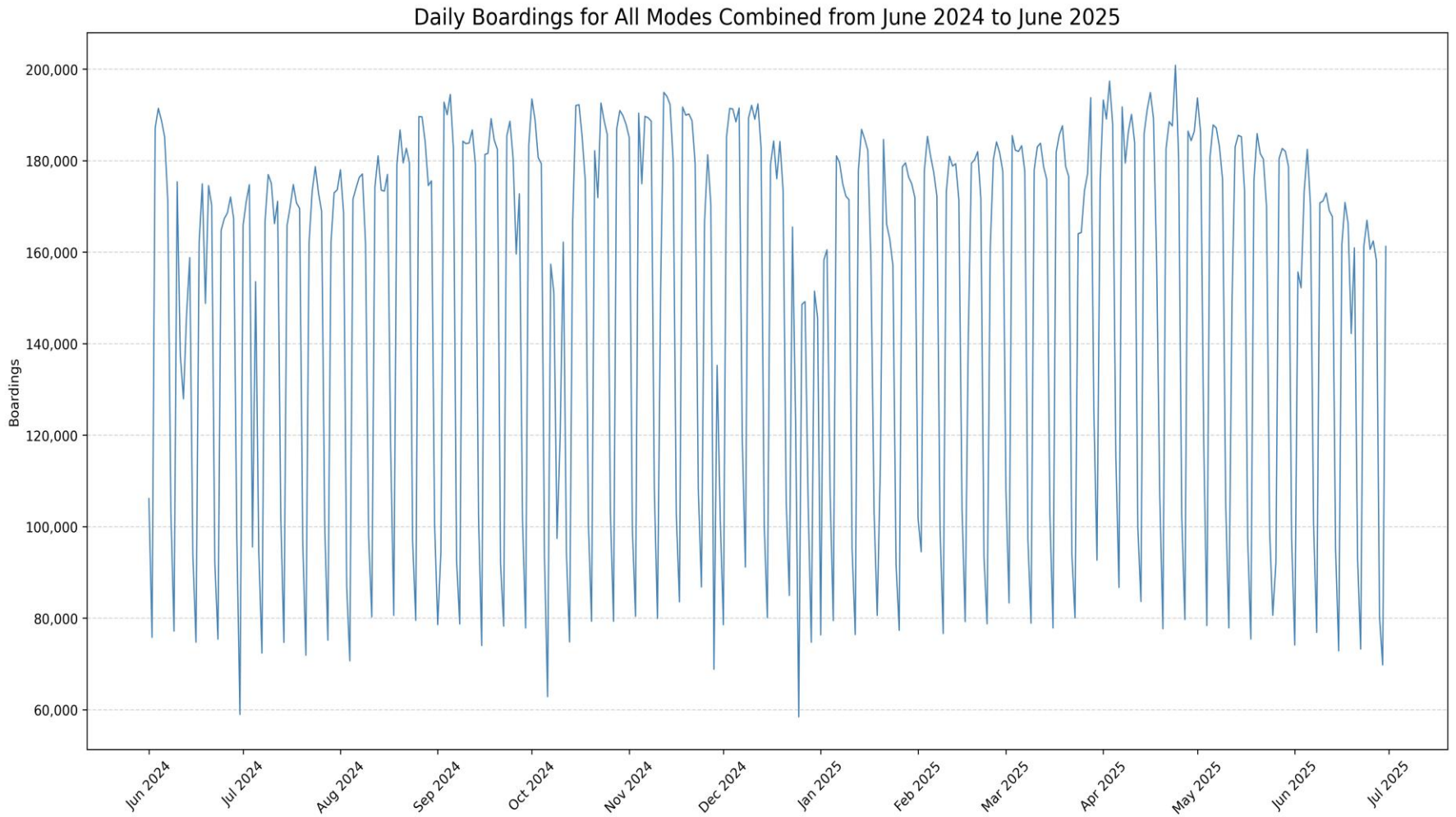


boardings



June 2025

DAILY RIDERSHIP FOR ALL MODES COMBINED



Metrobus



Better Bus Network (BBN, 11/13/2023 lineup) Bus Route Changes (Pt 1)

The listings below and on the following page are to serve as an aid in identifying individual routes for comparison of ridership data between periods prior to and following the launch of the BBN on 11/13/2023. In Nov-23, both old and new route numbers appear in data tables, since the launch took place near mid-month; beginning with Dec-23, only the current (BBN) numbering system appear in tables, to conveniently allow for direct comparisons.

BBN Route Numbering Changes:

Contracted **Route 1** was renumbered **Route 97**

Directly operated **Route 33** was renumbered **Route 103** (new, recycled number, not the same as former **Route 103 - C**)

Directly operated **Route 51** (Flagler MAX) was renumbered **Route 211** (recycled number, not the same as the OVERTOWN CIRCULATOR)

Contracted **Route 71** was renumbered **Route 107** (new, recycled number, not the same as **Route 107 - G** further below) and became directly operated

Directly operated **Route 79** was renumbered **Route 279** (79th Steet MAX)

Directly operated **Route 93** was renumbered **Route 203** (Biscayne MAX)

Directly operated **Route 99** was renumbered **Route 199**

Contracted **Route 101 - A** was renumbered **Route 15**

Directly operated **Route 102 - B** was renumbered **Route 26** (under the BBN's first phase, 07/24/2023 lineup)

Directly operated **Route 107 - G** (old, not the same as the **Route 107** appearing above) was renumbered **Route 125**

Directly operated **Route 112 - L** was renumbered **Route 79** (recycled number, not the same as the **Route 79** appearing above)

Directly operated **Route 120** was renumbered **Route 100**

Directly operated **Route 200** (CUTLER BAY LOCAL) was renumbered **Route 500** (recycled number, not the same as the **Route 500** further below)

Contracted **Route 210** was renumbered **Route 510** (SKYLAKE CIRCULATOR)

Contracted **Route 246** was renumbered **Route 401** (NORTH OWL)

Contracted **Route 248** (Princeton Circulator) was renumbered **Route 70** (recycled number, not the same as former **Route 70**)

Directly operated **Route 252** became contractor-operated, under the new name and number **Route 152**

Directly operated **Route 500** was renumbered **Route 400** (SOUTH OWL)

*The above routes, along with many others who retained their numbering, underwent modifications in various ways (realignment, new headways, days of operation, etc., some major), as part of the BBN design and its resulting lineup. Details for each DTPW Bus route are provided in the Miami-Dade County website. (Directly operated **Route 2** became contractor-operated but kept its number).*

Better Bus Network (BBN, 11/13/2023 et seq. lineups) Bus Route Changes (Pt 2)

BBN New Routes:

Two new routes with new numbering, and later two new routes with recycled numbers were created to support the Better Bus Network:

Route 14 corresponds to a newly created route

Route 57 (recycled number) corresponds to a newly created route

Route 20 corresponds to a newly created route

Route 101 (recycled number, not the same as old Route 101 A, now

Route 15) corresponds to a newly created route

BBN Eliminated Routes:

The following routes were discontinued, as part of the Better Bus Network realignments:

Route 10

Route 105 - E

Route 212 (SWEETWATER CIRCULATOR)

Route 16

Route 108 - H

Route 217 (BUNCHE PARK CIRCULATOR)

Route 19

Route 110 - J

Route 238 (EAST-WEST CONNECTION)

Route 29

Route 113 - M

Route 241 (TUTTLE LIMITED)

Route 31 (BUSWAY LOCAL)

Route 115

Route 254 (BROWNSVILLE CIRCULATOR)

Route 42

Route 119 - S

Route 267 (LUDLAM LIMITED)

Route 46 (LIBERTY CITY CONNECTION)

Route 155 (BISCAYNE GARDENS CIRCULATOR)

Route 277 (7th AVENUE MAX)

Route 57

Route 202 (LITTLE HAITI CONNECTION)

Route 286 (NORTH POINTE CIRCULATOR)

Route 82 (WESTCHESTER CIRCULATOR)

Route 297 (27th AVENUE ORANGE MAX)

Route 103 - C (old, previously used numbering, not the same as the Route 103 in the list on the previous page)

Route 211 (OVERTOWN CIRCULATOR, previously used numbering, not the same as the Route 211 in the list on the previous page)

Previously Eliminated Routes:

The following five express routes were suspended soon after the start of the SARS-CoV-2 pandemic, and never reinstated; their ridership appears in some of the tables in this report, as then-components of the reported bus system performance metrics:

Route 175 (NW MIAMI-DADE EXPRESS)

Route 195 EXPRESS – BROWARD BLVD

Route 196 EXPRESS – BROWARD BLVD-CIVIC CENTER

Route 295 EXPRESS – SHERIDAN STREET

Route 296 EXPRESS – SHERIDAN STREET-CIVIC CENTER

The preceding listings are not exhaustive, and the reader is referred to the Miami-Dade County website for further BBN details or additional changes.

Six new MetroLink routes began running in July and August 2024 as a complement to the BBN; one (Alton Rd) is now the New Route 101 (different from old Route 101 / A).

METROBUS AVERAGE WEEKDAY BOARDINGS BY ROUTE (†)

Route	Average Weekday	Average Weekday	Percent Change	Average Weekday	Percent Change	Average Weekday	Percent Change	Average Weekday	Percent Change
weekdays	Jun-25	May-25	MOM	Oct-23	MO20M	Jun-24	YOY	Feb-20	Current vs Feb-20
2	2,108	1,920	9.8%	2,977	-29.2%	2,076	1.6%	3,102	-32.0%
3	6,709	6,979	-3.9%	5,416	23.9%	8,012	-16.3%	5,137	30.6%
7	2,922	3,375	-13.4%	4,021	-27.3%	3,547	-17.6%	3,501	-16.5%
8	4,070	4465	-8.9%	4,650	-12.5%	4,773	-14.7%	3,909	4.1%
9	9,459	10475	-9.7%	6,490	45.7%	11,386	-16.9%	5,528	71.1%
10				2,443				2,482	
11	9,672	10693	-9.6%	9,621	0.5%	10,899	-11.3%	7,292	32.6%
12	2,416	2830	-14.6%	2,891	-16.4%	2,699	-10.5%	2,779	-13.0%
14	866	981	-11.8%			916	-5.5%		
15	576	592	-2.7%	178	223.6%	539	6.9%	177	225.4%
16				2,009				1,862	
17	5,367	6297	-14.8%	4,133	29.9%	6,673	-19.6%	3,878	38.4%
19				1,807				1,542	
20	1,941	2189	-11.3%			3,765	-48.4%		
21	1,759	1981	-11.2%	2,107	-16.5%	2,134	-17.6%	1,817	-3.2%
22	1,937	2288	-15.4%	4,502	-57.0%	2,308	-16.1%	3,640	-46.8%
24-CORAL WAY LIMITED	1,974	2248	-12.2%	2,195	-10.1%	2,186	-9.7%	1,340	47.3%
26	1,934	2401	-19.4%	1,877	3.0%	2,140	-9.6%	1,778	8.8%
27	7,804	8285	-5.8%	7,110	9.8%	9,618	-18.9%	6,972	11.9%
29				516				534	
31- BUSWAY LOCAL								1,089	
32	2,088	2349	-11.1%	2,699	-22.7%	1,802	15.8%	2,390	-12.7%
34-EXPRESS: FLA CITY TO DADELAND SO	1,449	1511	-4.1%	1,636	-11.4%	1,720	-15.8%	2,008	-27.8%
35	2,015	2185	-7.8%	3,070	-34.4%	2,263	-11.0%	2,421	-16.8%
36	5,536	6051	-8.5%	2,645	109.3%	6,133	-9.7%	2,536	118.3%
37	3,843	4356	-11.8%	3,475	10.6%	4,520	-15.0%	3,273	17.4%
38-TRANSITWAY MAX	4,801	5562	-13.7%	5,714	-16.0%	6,911	-30.5%	6,361	-24.5%
39-TRANSITWAY EXPRESS	787	901	-12.6%	742	6.1%	730	7.8%	893	-11.9%
40	1,438	1641	-12.4%	2,344	-38.6%	1,807	-20.4%	1,772	-18.8%
42				1,001				820	
46- LIBERTY CITY CONN.				22				41	
52	1,335	1529	-12.7%	1,390	-4.0%	1,555	-14.1%	1,261	5.9%
54	2,340	2662	-12.1%	3,086	-24.2%	2,783	-15.9%	2,940	-20.4%
56	263	260	1.2%	391	-32.7%	531	-50.5%	354	-25.7%
57				522				433	
new 57	189	183	3.3%						
62-HIALEAH-BISC BLVD VIA 62 ST	2,136	2572	-17.0%	2,496	-14.4%	2,838	-24.7%	1,815	17.7%
70	239	275	-13.1%	161	48.4%	269	-11.2%	135	77.0%

(†) In this table and those which follow, "YOY" stands for "year-over-year", "MOM" for "month-over-month" and, e.g., "MOZM" for "month over Z months", i.e., current month vs 12 months prior, one month prior, and compared to pre-BBN, respectively. The Feb-20 numbers serve as a pre-pandemic benchmark. To see which routes are fully or partly operated under contract this month, please refer to the ranking table further in the Metrobus portion of this document.

METROBUS AVERAGE WEEKDAY BOARDINGS BY ROUTE

Route	Average Weekday	Average Weekday	Percent Change	Average Weekday	Percent Change	Average Weekday	Percent Change	Average Weekday	Percent Change
weekdays	Jun-25	May-25	MOM	Oct-23	MO20M	Jun-24	YOY	Feb-20	Current vs Feb-20
72	779	892	-12.7%	670	16.3%	828	-5.9%	781	-0.3%
73	1,058	1,244	-14.9%	2,868	-63.1%	1,361	-22.2%	2,124	-50.2%
75	2,283	2,728	-16.3%	1,594	43.2%	3,128	-27.0%	1,429	59.7%
77	9,268	9,817	-5.6%	9,959	-6.9%	11,448	-19.0%	7,129	30.0%
79	7,381	8,011	-7.9%	8,481	-13.0%	8,651	-14.7%	7,636	-3.3%
82- WESTCHESTER CIRC				61				62	
87	1,733	1,959	-11.5%	1,924	-9.9%	2,177	-20.4%	1,499	15.6%
88	1,666	1,840	-9.5%	2,419	-31.1%	1,815	-8.2%	2,076	-19.8%
95-EXPRESS GOLDEN GLADES	1,185	1,484	-20.2%	1,195	-0.9%	1,261	-6.1%	2,893	-59.1%
97	169	190	-11.1%	225	-24.9%	184	-8.2%	184	-8.2%
100	14,063	15,070	-6.7%	6,128	129.5%	16,084	-12.6%	6,667	110.9%
new 101	607	733	-17.2%						
103- C								463	
103	1,414	1,676	-15.7%	1,967	-28.1%	2,074	-31.8%	1,687	-16.2%
104	938	1,071	-12.4%	1,024	-8.4%	1,116	-15.9%	837	12.1%
105- E				1,402				1,287	-100.0%
107	1,590	1,732	-8.2%	825	92.7%	1,984	-19.9%	711	123.6%
108- H				487				473	
110 - J				2,955				2,508	
113 - M				887				866	
115				151				180	
119 - S				9,588				8,970	
125	3,974	4,164	-4.6%	2,009	97.8%	4,622	-14.0%	1,713	132.0%
132-TRI-RAIL DORAL SHUTTLE	37	49	-23.7%	37	1.1%	41	-8.8%	16	133.8%
135	1,499	1,928	-22.3%	1,755	-14.6%	1,888	-20.6%	1,399	7.1%
136	130	144	-9.5%	162	-19.6%	152	-14.3%	126	3.4%
137- WEST DADE CONNECTION	1,810	1,977	-8.5%	2,119	-14.6%	2,300	-21.3%	1,626	11.3%
150- MIAMI BEACH AIRPORT EXPRESS	1,307	1,446	-9.6%	2,149	-39.2%	1,433	-8.8%	1,867	-30.0%
152	352	359	-1.9%	1,051	-66.5%	366	-3.8%	851	-58.6%
155- BISCAYNE GARDENS CIRC				45				44	
175- NW MIAMI-DADE EXPRESS								33	
183	4,037	4,534	-11.0%	3,653	10.5%	4,776	-15.5%	3,149	28.2%
199	1,643	1,890	-13.1%	1,899	-13.5%	1,928	-14.8%	1,473	11.6%
202- LITTLE HAITI CONN				110				140	
203- BISCAYNE MAX	813	891	-8.8%	3,666	-77.8%	978	-16.9%	3,334	-75.6%

METROBUS AVERAGE WEEKDAY BOARDINGS BY ROUTE

Route	Average Weekday	Average Weekday	Percent Change	Average Weekday	Percent Change	Average Weekday	Percent Change	Average Weekday	Percent Change
weekdays	Jun-25	May-25	MOM	Oct-23	MO20M	Jun-24	YOY	Feb-20	Current vs Feb-20
204 KILLIAN MAX	543	597	-9.1%	620	-12.5%	549	8.7%	1,071	-49.3%
207 (7th St)- LITTLE HAVANA CONN	1281	1,610	-20.5%	1,819	-29.6%	1,573	2.4%	1,489	-14.0%
208 (8th St)- LITTLE HAVANA CONN	1481	1,735	-14.7%	1,659	-10.8%	1,551	11.9%	1,308	13.2%
211 OVERTOWN CIRCULATOR				71				58	
211- FLAGLER MAX	1421	1,563	-9.1%	3,824	-62.8%	1,496	4.5%	3,109	-54.3%
212- SWEETWATER CIRC				22				15	
217- BUNCHE PARK CIRC				80				97	
238- EAST/WEST CONN				593				449	
241 TUTTLE LIMITED				348					
254- BROWNSVILLE CIRC				5				19	
267- LUDLAM LIMITED				162				149	
272 SUNSET MAX (*)	311	328	-5.2%	428	-27.3%	358	-8.4%	550	-43.5%
277- 7TH AVENUE MAX				879				683	
279- 79 STREET MAX	583	674	-13.5%	469	24.3%	756	-10.8%	361	61.5%
286- NORTH POINTE CIRC				93				97	
287- SAGA BAY MAX	265	313	-15.2%	341	-22.2%	351	-10.8%	358	-25.9%
288 KENDALL MAX	428	485	-11.8%	372	15.1%	439	10.5%	762	-43.8%
297-27th AVENUE ORANGE MAX				1,229				1,356	
301-DADE MONROE EXPRESS	1497	1,443	3.7%	955	56.8%	1,019	41.6%	841	78.0%
302- CARD SOUND EXPRESS	124	114	8.8%	91	36.3%	105	8.6%	86	44.2%
338- WEEKEND EXXPRESS									
344	124	149	-16.8%	76	63.2%	118	26.3%	96	29.2%
400- SOUTH OWL	65	89	-27.0%	71	-8.5%	76	17.1%	81	-19.8%
401- NORTH OWL	71	62	14.5%	61	16.4%	68	-8.8%	94	-24.5%
500 - CUTLER BAY LOCAL	130	169	-23.4%	176	-26.4%	251	-32.7%	158	-18.0%
510 - SKYLAKE CIRCULATOR (*)	281	326	-13.8%	471	-40.3%	436	-25.2%	282	-0.4%
836 EXPRESS	299	330	-9.5%	247	21.0%	314	5.1%		
837 EXPRESS	201	246	-18.2%	195	3.2%	193	27.5%		
MetroLink NoMi West	296	304	-2.6%						
MetroLink North Miami									
MetroLink LeJeune									
MetroLink Killian Parkway									
MetroLink Alton Road									
MetroLink Opa-Locka									
AHEPA SHUTTLE	22	19	15.8%	18	22.2%	20	-5.0%	21	4.8%
FEDERATION GARDEN S SHUTTLE									
GREEN HILLS SHUTTLE	7	9	-22.2%	5	40.0%	8	-12.5%	9	-22.2%
KING S CREEK SHUTTLE	8	9	-11.1%	14	-42.9%	9	-11.1%	13	-38.5%
MEEK / MARQUES S SHUTTLE	14	21	-33.3%						
ROBERT SHARP SHUTTLE	31	37	-16.2%	23	34.8%	30	23.3%	10	210.0%
SIERRA LAKES SHUTTLE	21	18	16.7%	16	31.3%	17	5.9%	45	-53.3%
Total	159,209	176,515	-9.8%	184,565	-13.7%	187,865	-15.3%	166,931	-4.6%

(1) Includes shuttles and those routes which were not run some years.

(2) Several express routes were suspended beginning at the end of Mar-20, due to the SARS-CoV-2 pandemic, while other routes had alignment and schedule modifications made to them, in an ongoing effort to optimize service delivery.

METROBUS AVERAGE SATURDAY BOARDINGS BY ROUTE

Route	Average Saturday	Average Saturday	Percent Change	Average Saturday	Percent Change	Average Saturday	Percent Change	Average Saturday	Percent Change
Saturdays	Jun-25	May-25	MOM	Oct-23	MO20M	Jun -24	YOY	Feb-20	Current vs Feb-20
2	1,188	948	25.3%	1,605	-26.0%	1,125	5.6%	1,616	-26.5%
3	5,006	4,753	5.3%	5,754	-13.0%	6,781	-26.2%	5,229	-4.3%
7	1,916	1,907	0.5%	1,972	-2.8%	2,028	-5.5%	1,887	1.5%
8	2,024	2,188	-7.5%	2,334	-13.3%	2,304	-12.2%	2,027	-0.2%
9	6,271	6,795	-7.7%	3,677	70.5%	7,441	-15.7%	3,034	106.7%
10				2,107				1,896	
11	5,955	7,205	-17.4%	5,787	2.9%	8,050	-26.0%	5,182	14.9%
12	1,359	1,470	-7.6%						
14	611	732	-16.6%			777	-21.4%		
15	553	482	14.8%	93	494.9%	343	61.3%	71	679.2%
16				1,662				1,566	
17	3,523	3,949	-10.8%	2,553	38.0%	4,712	-25.2%	2,363	49.1%
20	1,605	1,826	-12.1%			2,899	-44.6%		
21	1,066	1,171							
22	1,352	1,300	4.0%	2,425	-44.3%	1,458	-7.3%	2,084	-35.1%
24- CORAL WAY LIMITED	1,333	1,493	-10.7%	1,400	-4.8%	1,644	-18.9%	1,165	14.4%
26	1,039	1,097	-5.3%	966	7.5%	1,163	-10.7%	851	22.1%
27	4,463	4,948	-9.8%	4,006	11.4%	6,568	-32.0%	4,034	10.6%
31-BUSWAY LOCAL								896	
32	1,292	1,409	-8.3%	1,261	2.5%	1,100	17.5%	1,029	25.6%
35	1,273	1,450		1,540		1,660	-23.3%	1,372	-7.2%
36	4,165	4,394	-5.2%	1,677	148.3%	4,566	-8.8%	1,289	223.1%
37	2,544	2,795	-9.0%	2,062	23.4%	3,017	-15.7%	2,090	21.7%
38 TRANSITWAY MAX	3,416	3,820	-10.6%	6,328	-46.0%	5,804	-41.1%	4,715	-27.5%
40	869	914	-4.9%	926	-6.1%	1,054	-17.5%	655	32.7%
42				617				552	
52	906	1,023	-11.4%	694	30.6%	1,040	-12.9%	686	32.1%
54	1,647	1,753	-6.0%	1,925	-14.4%	1,812	-9.1%	1,727	-4.6%
56	90	94	-4.3%			210	-57.1%		
new 57	76	78	-2.9%						
62	1,546	1,667	-7.3%	1,823	-15.2%	1,902	-18.7%	1,343	15.1%
70	186	191	-2.5%			210	-11.3%		
72	525	565	-7.0%	357	47.1%	500	5.1%	350	50.1%
73	386	474	-18.6%	1,202	-67.9%	547	-29.5%	860	-55.1%
75	1,789	1,818	-1.6%	550	225.2%	1,934	-7.5%	468	282.2%
77	5,453	6,488	-16.0%	5,510	-1.0%	7,504	-27.3%	4,197	29.9%
79	6,004	6,134	-2.1%	7,094	-15.4%	7,348	-18.3%	5,667	6.0%
82 - WESTCHESTER CIRC				38				50	
87	782	883	-11.4%	532	47.0%	931	-16.0%	402	94.5%

METROBUS AVERAGE SATURDAY BOARDINGS BY ROUTE

Route	Average Saturday	Average Saturday	Percent Change	Average Saturday	Percent Change	Average Saturday	Percent Change	Average Saturday	Percent Change
Saturdays	Jun-25	May-25	MOM	Oct-23	MO20M	Jun -24	YOY	Feb-20	Current vs Feb-20
88	1,349	1,466	-8.0%	1,661	-18.8%	1,430	-5.7%	1,620	
97	160	170	-6.0%	163	-2.0%	162	-1.4%	215	-25.7%
100	11,422	11,861	-3.7%	5,637	102.6%	14,403	-20.7%	4,744	140.8%
103- C								315	
103	1,020	1,072	-4.9%	1,239	-17.7%	1,331	-23.4%	951	7.2%
104	511	634	-19.4%	445	14.8%	790	-35.3%	468	9.2%
105- E				772				619	
107	928	1,101	-15.7%	238	289.9%	1,241	-25.2%	252	268.2%
108- H				401				372	
110 - J				1,394				1,952	
113 - M				577				503	
115				80				82	
119 - S				8,118				6,861	
125	2,539	2,716	-6.5%	1,297	95.7%	2,780	-8.7%	1,066	138.1%
135	891	937	-4.9%	556	60.2%	862	3.3%	539	65.3%
137- WEST DADE CONNECTION	1,199	1,338	-10.4%	1,337	-10.3%	1,486	-19.3%	1,027	16.8%
150- MIAMI BEACH AIRPORT EXPRESS	1,223	1,327	-7.9%	2,161	-43.4%	1,412	-13.4%	1,604	-23.8%
152	198			375	-47.2%	238	-16.8%	302	-34.4%
183	2,584	2,756	-6.2%	1,960	31.8%	3,043	-15.1%	1,790	44.3%
199	1,411	1,397	1.0%	1,106	27.6%	1,375	2.6%	849	66.2%
202- LITTLE HAITI CONN				22				50	
207 (7th St)- LITTLE HAVANA CONN	649	693	-6.4%	929	-30.2%	690	-6.0%	1,032	-37.2%
208 (8th St)- LITTLE HAVANA CONN	762	804	-5.2%	1,030	-26.0%	938	-18.8%	1,044	-27.0%
241 TUTTLE LIMITED				222					
301-DADE MONROE EXPRESS	862	1,526	-43.5%	885	-2.6%	960	-10.2%	801	7.7%
302- CARD SOUND EXPRESS	127	141	-10.3%	94	34.6%	113	11.9%	57	121.9%
338- WEEKEND EXPRESS	177	149	18.9%	259	-31.6%	157	12.9%	237	-25.2%
344	73	95	-22.9%			76	-3.6%		
400- SOUTH OWL	80	40	100.0%	104	-23.1%	95	-15.8%	70	14.3%
401- NORTH OWL	71	61	15.6%	61	15.6%	55	28.2%	84	-16.1%
500 - CUTLER BAY LOCAL	140	167	-16.3%	152	-8.0%	221	-36.7%	119	17.5%
510 - SKYLAKE CIRCULATOR (*)	144	128	12.3%	217	-33.8%	272	-47.2%	165	-12.9%
12/21 WEEKEND INTERLINE				3,290		2,774		2,528	
FEDERATION GARDEN S SHUTTLE	23	23	1.1%	20	16.3%	33	-29.5%	28	-17.0%
Total	100,751	108,816	-7.4%	107,279	-6.1%	125,369	-19.6%	93,699	7.5%

METROBUS AVERAGE SUNDAY BOARDINGS BY ROUTE

Route	Average Sunday	Average Sunday	Percent Change	Average Sunday	Percent Change	Average Sunday	Percent Change	Average Sunday	Percent Change
Sundays	Jun-25	May-25	MOM	Oct-23	MO20M	Jun-24	YOY	Feb-20	Current vs Feb-20
2	1,014	763	32.8%	1,214	-16.5%	717	41.4%	1,335	-24.1%
3	4,119	4,337	-5.0%	4,408	-6.6%	4,755	-13.4%	4,353	-5.4%
7	1,394	1,541	-9.5%	1,632	-14.6%	1,345	3.7%	1,654	-15.7%
8	1,323	1,456	-9.1%	1,838	-28.0%	1,472	-10.1%	1,746	-24.2%
9	4,368	4,769	-8.4%	2,756	58.5%	4,980	-12.3%	2,549	71.4%
10				1,632				1,441	
11	4,756	5,182	-8.2%	3,803	25.1%	4,940	-3.7%	3,917	21.4%
12	1,112	1,174							
14	677	743				775	-12.7%		
15	496	461	7.6%	53	836.2%	226	119.6%	56	786.1%
16				1,023				997	
17	2,673	2,657	0.6%	1,920	39.2%	3,036	-12.0%	1,833	45.8%
20	1,168	1,313	-11.0%			2,051	-43.0%		
21	881	899							
22	881	873	0.9%	1,915	-54.0%	1,062	-17.1%	1,548	-43.1%
24- CORAL WAY LIMITED	900	996	-9.6%	1,108	-18.8%	1,043	-13.7%	905	-0.6%
26	689	842	-18.2%	871	-20.9%	855	-19.4%	717	-3.9%
27	2,948	2,611	12.9%	3,146	-6.3%	3,868	-23.8%	2,918	1.0%
31-BUSWAY LOCAL								715	
32	1,016	1,094	-7.1%	768	32.3%	812	25.1%	772	31.6%
35	1,115	1,191		1,175		1,367	-18.5%	942	18.3%
36	3,187	3,505	-9.1%	1,160	174.8%	3,217	-0.9%	1,111	186.9%
37	1,715	1,993	-13.9%	1,755	-2.3%	2,099	-18.3%	1,739	-1.4%
38 TRANSITWAY MAX	2,983	3,319	-10.1%	4,957	-39.8%	4,502	-33.8%	4,147	-28.1%
40	529	622	-14.9%	542	-2.4%	652	-18.8%	447	18.4%
42				425				416	
52	743	755	-1.6%	496	49.8%	827	-10.2%	466	59.4%
54	1,069	1,181	-9.5%	1,181	-9.5%	1,146	-6.7%	1,171	-8.7%
62	1,084	1,117	-3.0%	1,040	4.2%	1,196	-9.4%	891	21.7%
70	179	178	0.7%			164	9.3%		
72	397	399	-0.5%	259	53.3%	388	2.3%	265	49.8%
73	189	221	-14.3%	602	-68.6%	208	-9.0%	495	-61.8%
75	1,297	1,248	3.9%	352	268.5%	1,311	-1.1%	271	378.7%
77	3,857	3,984	-3.2%	3,980	-3.1%	4,936	-21.9%	2,815	37.0%
79	4,521	4,789	-5.6%	4,837	-6.5%	4,697	-3.7%	4,804	-5.9%
87	412	482	-14.5%	362	13.8%	528	-22.0%	319	29.2%

METROBUS AVERAGE SUNDAY BOARDINGS BY ROUTE

Route	Average Sunday	Average Sunday	Percent Change	Average Sunday	Percent Change	Average Sunday	Percent Change	Average Sunday	Percent Change
Sundays	Jun-25	May-25	MOM	Oct-23	MO20M	Jun-24	YOY	Feb-20	Current vs Feb-20
88	950	1,054	-9.8%	1,255	-24.3%	1,001	-5.1%	1,286	-26.1%
97	146	126	15.6%	149	-2.3%	132	10.3%	201	-27.6%
100	8,683	8,844	-1.8%	3,492	148.7%	9,026	-3.8%	3,469	150.3%
103- C								212	
103	669	697	-4.0%	729	-8.2%	783	-14.6%	607	10.2%
104	376	415	-9.3%	348	8.1%	546	-31.1%	317	18.7%
105- E				634				616	
107	758	812	-6.7%	187	305.2%	962	-21.2%	162	367.8%
108- H				363				328	
110 - J				1,699				1,638	
113 - M				444				431	
115				66				80	
119 - S				7,612				7,141	
125	1,749	1,972	-11.3%	1,036	68.8%	1,793	-2.4%	895	95.4%
135	669	583	14.7%	474	41.0%	654	2.2%	349	91.5%
137- WEST DADE CONNECTION	929	940	-1.1%	956	-2.8%	967	-3.9%	879	5.7%
150- MIAMI BEACH AIRPORT EXPRESS	1,160	1,150	0.9%	1,966	-41.0%	1,184	-2.0%	1,574	-26.3%
152	155	148	4.6%	331	-53.2%	139	11.4%	199	-22.2%
183	1,793	1,928	-7.0%	1,569	14.3%	2,000	-10.4%	1,413	26.9%
199	965	1,000	-3.5%	887	8.8%	990	-2.5%	658	46.7%
202- LITTLE HAITI CONN				21				39	
207 (7th St)- LITTLE HAVANA CONN	519	554	-6.4%	648	-19.9%	477	8.8%	796	-34.8%
208 (8th St)- LITTLE HAVANA CONN	647	700	-7.5%	862	-24.9%	742	-12.8%	911	-29.0%
241 TUTTLE LIMITED				187					
301-DADE MONROE EXPRESS	1,393	1,368	1.8%	867	60.6%	950	46.6%	751	85.5%
302- CARD SOUND EXPRESS	105	112	-5.9%	72	46.4%	93	13.3%	57	84.9%
338- WEEKEND EXPRESS	151	154	-2.3%	247	-39.1%	177	-15.0%	252	-40.3%
400- SOUTH OWL	63	81	-22.5%	70	-10.3%	91	-31.0%	83	-24.3%
401- NORTH OWL	341	53	543.4%	65	424.6%	65	424.6%	87	292.0%
500 - CUTLER BAY LOCAL	74	82	-10.4%	86	-14.5%	100	-26.5%	59	24.6%
510 - SKYLAKE CIRCULATOR (*)	127	123	2.9%	194	-34.7%	210	-39.7%	143	-11.5%
12/21 WEEKEND INTERLINE				2,700		2,182		2,048	
Total	76,112	79,591	-4.4%	81,426	-6.5%	84,439	-9.9%	75,436	0.9%

METROBUS TOTAL MONTHLY BOARDINGS BY ROUTE

Route	Total Month	Total Month	Percent Change	Total Month	Percent Change	Total Month	Percent Change	Total Month	Percent Change
total month	Jun-25	May-25	MOM	Oct-23	MO20M	Jun-24	YOY	Feb-20	Current vs Feb-20
2	54,094	50,032	8.1%	77,976	-30.6%	50,727	6.6%	75,463	-28.3%
3	189,046	199,583	-5.3%	164,203	15.1%	217,925	-13.3%	146,294	29.2%
7	80,185	89,951	-10.9%	104,507	-23.3%	87,802	-8.7%	86,077	-6.8%
8	105,175	122,383	-14.1%	120,821	-12.9%	114,338	-8.0%	95,295	10.4%
9	253,473	284,498	-10.9%	171,265	48.0%	289,825	-12.5%	135,924	86.5%
10				70,338				64,874	
11	268,833	296,947	-9.5%	253,837	5.9%	282,921	-5.0%	187,425	43.4%
12	63,028	74,304	-15.2%	63,603	-0.9%	53,975	16.8%	55,585	13.4%
14	25,810	28,446	-9.3%			26,088	-1.1%		
15	16,794	17,300	-2.9%	4,545	269.5%	13616	23.3%	4,114	308.2%
16				55,959				49,061	
17	148,527	172,747	-14.0%	110,727	34.1%	172,193	-13.7%	96,715	53.6%
19				39,745				30,847	
20	56,615	63,798	-11.3%			100,057	-43.4%		
21	47,048	53,031	-11.3%	46,355	1.5%	42,685	10.2%	36,341	29.5%
22	51,661	60,325	-14.4%	118,329	-56.3%	58,755	-12.1%	89,404	-42.2%
24-CORAL WAY LIMITED	53,933	63,008	-14.4%	59,432	-9.3%	57,159	-5.6%	36,237	48.8%
26	50,183	61,676	-18.6%	49,521	1.3%	52,893	-5.1%	42,683	17.6%
27	207,278	226,623	-8.5%	188,160	10.2%	244,547	-15.2%	171,282	21.0%
29				11,342				10,684	
31- BUSWAY LOCAL								29,125	
32	55,846	63,276	-11.7%	68,263	-18.2%	45,600	22.5%	56,027	-0.3%
34-EXPRESS: FLA CITY TO DADELAND SO	35,532	39,487	-10.0%	36,002	-1.3%	34,400	3.3%	40,159	-11.5%
35	55,363	60,694	-8.8%	79,573	-30.4%	60,390	-8.3%	59,041	-6.2%
36	152,504	169,113	-9.8%	70,698	115.7%	161,570	-5.6%	61,606	147.5%
37	104,617	118,495	-11.7%	93,471	11.9%	115,987	-9.8%	82,870	26.2%
38-TRANSITWAY MAX	149,547	173,298	-13.7%	175,803	-14.9%	189,752	-21.2%	167,379	-10.7%
39-TRANSITWAY EXPRESS	18,138	22,182	-18.2%	16,333	11.1%	14,591	24.3%	17,853	1.6%
40	38,500	43,166	-10.8%	57,992	-33.6%	44,675	-13.8%	40,497	-4.9%
42				26,611				20,825	
46- LIBERTY CITY CONN.				477				814	
52	37,043	42,415	-12.7%	35,844	3.3%	40,426	-8.4%	30,522	21.4%
54	64,091	72,197	-11.2%	81,490	-21.4%	70,458	-9.0%	72,125	-11.1%
56	5,881	6,195	-5.1%	8,598	-31.6%	11,673	-49.6%	7,071	-16.8%
57				11,491				8,665	
new 57	4,274	4,437	-3.7%						
62-HIALEAH-BISC BLVD VIA 62 ST	59,206	69,658	-15.0%	67,398	-12.2%	72,252	-18.1%	46,582	27.1%
70	6,656	7,712	-13.7%	3,546	87.7%	7,250	-8.2%	2690	147.4%

METROBUS TOTAL MONTHLY BOARDINGS BY ROUTE

Route	Total Month	Total Month	Percent Change	Total Month	Percent Change	Total Month	Percent Change	Total Month	Percent Change
total month	Jun-25	May-25	MOM	Oct-23	MO20M	Jun-24	YOY	Feb-20	Current vs Feb-20
72	20,446	24,052	-15.0%	17,459	17.1%	20,997	-2.6%	18,433	10.9%
73	25,427	30,622	-17.0%	70,903	-64.1%	31,000	-18.0%	48,767	-47.9%
75	67,678	75,031	-9.8%	39,021	73.4%	78,793	-14.1%	31,994	111.5%
77	250,199	267,223	-6.4%	261,039	-4.2%	291,152	-14.1%	174,833	43.1%
79	206,176	226,251	-8.9%	239,146	-13.8%	233,253	-11.6%	200,268	3.0%
82- WESTCHESTER CIRC				1,488				1,482	
87	42,987	49,433	-13.0%	46,254	-7.1%	50,843	-15.5%	33,273	29.2%
88	46,843	52,038	-10.0%	66,138	-29.2%	48,454	-3.3%	54,772	-14.5%
95-EXPRESS GOLDEN GLADES	30,159	33,623	-10.3%	26,295	14.7%	25,228	19.5%	57,860	-47.9%
97	4,924	5,590	-11.9%	6,337	-22.3%	5,160	-4.6%	5,558	-11.4%
100	394,159	427,020	-7.7%	174,819	125.5%	438,828	-10.2%	170,942	130.6%
new 101	13,636	16,133	-15.5%						
103- C								11,682	
103	38,574	45,028	-14.3%	51,871	-25.6%	52,052	-25.9%	40,918	-5.7%
104	25,206	28,389	-11.2%	26,049	-3.2%	29,005	-13.1%	20,351	23.9%
105- E				37,092				31,302	-100.0%
107	42,942	47,612	-9.8%	20,040	114.3%			16,118	166.4%
108- H				14,133				12,624	
110 - J				79,080				66,481	
113 - M				24,040				21,548	
115				3,968				4,334	
119 - S				281,456				242,257	
125	104,711	115,030	-9.0%	56,547	85.2%	115,307	-9.2%	43,178	142.5%
132-TRI-RAIL DORAL SHUTTLE	909	1,081	-15.9%	804	13.1%	828	9.8%	312	191.3%
135	39,827	49,910	-20.2%	43,211	-7.8%	45,337	-12.2%	32,067	24.2%
136	2,826	3,158	-10.5%	3,557	-20.6%	3,042	-7.1%	2,524	12.0%
137- WEST DADE CONNECTION	52,725	60,027	-12.2%	56,750	-7.1%	58,261	-9.5%	41,167	28.1%
150- MIAMI BEACH AIRPORT EXPRESS	39,595	43,307	-8.6%	65,763	-39.8%	41,643	-4.9%	51,651	-23.3%
152	8,961	9,421	-4.9%	26,285	-65.9%	9,204	-2.6%	19,325	-53.6%
155- BISCAYNE GARDENS CIRC				985				881	
175- NW MIAMI-DADE EXPRESS								661	
183	107,081	121,413	-11.8%	96,050	11.5%	120,745	-11.3%	77,570	38.0%
199	47,222	52,675	-10.4%	50,634	-6.7%	50,397	-6.3%	36,325	30.0%
202- LITTLE HAITI CONN				2,620				3,200	
203- BISCAYNE MAX	17,502	19,593	-10.7%	80,650	-78.3%	19,560	-10.5%	66,684	-73.8%

METROBUS TOTAL MONTHLY BOARDINGS BY ROUTE

Route	Total Month	Total Month	Percent Change	Total Month	Percent Change	Total Month	Percent Change	Total Month	Percent Change
total month	Jun-25	May-25	MOM	Oct-23	MO20M	Jun-24	YOY	Feb-20	Current vs Feb-20
204 KILLIAN MAX	12,145	13,140	-7.6%	13632	-10.9%	10,975	10.7%	21,418	-43.3%
207 (7th St)- LITTLE HAVANA CONN	35,088	41,097	-14.6%	46,970	-25.3%	37,291	-5.9%	38,127	-8.0%
208 (8th St)- LITTLE HAVANA CONN	38,585	45,126	-14.5%	44,922	-14.1%	39,411	-2.1%	35,018	10.2%
211 OVERTOWN CIRCULATOR				1567				1,159	
211 -FLAGLER MAX	32,137	37,246	-13.7%	84,135	-61.8%	29,921	7.4%	62,186	-48.3%
212- SWEETWATER CIRC				494				295	
217- BUNCHE PARK CIRC				1759				1,949	
238- EAST/WEST CONN				13036				8,987	
241 TUTTLE LIMITED				9471					
254- BROWNSVILLE CIRC				105				384	
267- LUDLAM LIMITED				3567				2,978	
272 SUNSET MAX (*)	6,525	7,207	-9.5%	9423	-30.8%	7,153	-8.8%	11,004	-40.7%
277- 7TH AVENUE MAX				19345				13,669	
279- 79 STREET MAX	12,648	14,830	-14.7%	10318	22.6%	15,111	-16.3%	7,228	75.0%
286- NORTH POINTE CIRC				2279				2,145	
287- SAGA BAY MAX	5,896	6,892	-14.5%	7499	-21.4%	7,022	-16.0%	7,160	-17.7%
288 KENDALL MAX	9,289	10,680	-13.0%	8189	13.4%	8,781	5.8%	15,249	-39.1%
297-27th AVENUE ORANGE MAX				27,047				27,125	
301-DADE MONROE EXPRESS	43,155	44,861	-3.8%	28889	49.4%	29,933	44.2%	23,838	81.0%
302- CARD SOUND EXPRESS	3,538	3,667	-3.5%	2728	29.7%	3,123	13.3%	2,236	58.2%
338- WEEKEND EXPRESS	1,545	1,358		2274		1,672	-7.6%	2,191	
344	2,891	3,743	-22.8%	1666	73.5%	2,738	5.6%	1,919	50.7%
400- SOUTH OWL	2,482	2,751	-9.8%	2324	6.8%	2,455	1.1%	2,301	7.9%
401- NORTH OWL	2,105	1,883	11.8%	1899	10.8%	1,953	7.8%	2,641	-20.3%
500 - CUTLER BAY LOCAL	4,065	4,886	-16.8%	4907	-17.2%	6,629	-38.7%	3,984	2.0%
510 - SKYLAKE CIRCULATOR (*)	7,108	8,293	-14.3%	12211	-41.8%	11,130	-36.1%	7,033	1.1%
836 EXPRESS	6,833	7,254	-5.8%	5428	25.9%	6,284	8.7%		
837 EXPRESS	4,523	5,423	-16.6%	4281	5.7%	3,860	17.2%		
MetroLink NoMi West	6,220	6,694	-7.1%						
MetroLink North Miami									
MetroLink LeJeune									
MetroLink Killian Parkway									
MetroLink Alton Road									
MetroLink Opa-Locka									
AHEPA SHUTTLE	89	94	-5.3%	71	25.4%	79	12.7%	83	7.2%
FEDERATION GARDEN S SHUTTLE	93	116	-19.8%	80		167	-44.3%	142	
GREEN HILLS SHUTTLE	33	26	26.9%	26	26.9%	32	3.1%	36	-8.3%
KING S CREEK SHUTTLE	32	45	-28.9%	55	-41.8%	35		52	-38.5%
MEEK / MARQUES S SHUTTLE	57	84	-32.1%						
ROBERT SHARP SHUTTLE	123	148	-16.9%	92	33.7%	120	2.5%	38	223.7%
SIERRA LAKES SHUTTLE	85	92	-7.6%	62	37.1%	69	23.2%	180	-52.8%
Total	4,326,886	4,828,273	-10.4%	4,912,151	-11.9%	4,805,039	-10.0%	4,123,083	4.9%

BUS RIDERSHIP BY ROUTE SERVICE COMPARISON (MONTH-OVER-MONTH)

Boardings by Service Type and Route	Average Weekday	Average Weekday	Percent Change	Average Saturday	Average Saturday	Percent Change	Average Sunday	Average Sunday	Percent Change	Total Monthly	Total Monthly	Percent Change
	Jun-25	May-25	MOM	Jun-25	May-25	MOM	Jun-25	May-25	MOM	Jun-25	May-25	MOM
Directly Operated Express Routes												
34 TRANSITWAY EXPRESS	1,449	1,511	-4.10%							35,532	39,487	-10.02%
39 TRANSITWAY EXPRESS	787	901	-12.65%							18,138	22,182	-18.23%
95-EXPRESS GOLDEN GLADES	1,185	1,484	-20.15%							30,159	33,623	-10.30%
150-MIAMI BEACH AIRPORT EXPRESS	1,307	1,446	-9.61%	1,223	1,327	-7.84%	1,160	1,150	0.87%	39,595	43,307	-8.57%
338 - WEEKEND EXPRESS				177	149	18.79%	151	154	-1.95%	1,545	1,358	13.77%
836 EXPRESS	299	330	-9.39%							6,833	7,254	-5.80%
837 EXPRESS	201	246	-18.29%							4,523	5,423	-16.60%
Subtotal Express Routes	5,228	5,918	-11.66%	1,400	1,476	-5.15%	1,311	1,304	0.54%	136,325	152,634	-10.69%
Percentage of All Bus Routes	3.28%	3.35%		1.39%	1.36%		1.72%	1.64%		3.15%	3.16%	
Contracted Routes - Local Service (*)												
2	2,108	1,920	9.79%	1,188	948	25.32%	1,014	763	32.90%	54,094	50,032	8.12%
15	576	592	-2.70%	553	482	14.73%	496	461	7.59%	16,794	17,300	-2.92%
29												
46 - LIBERTY CITY CONN.												
56	263	260	1.15%	90	94	-4.26%				5,881	6,195	-5.07%
new 57	189	183	3.28%	76	78	-2.56%				4,274	4,437	-3.67%
70	239	275	-13.09%	186	191	-2.62%	179	178	0.56%	6,656	7,712	-13.69%
72	779	892	-12.67%	525	565	-7.08%	397	399	-0.50%	20,446	24,052	-14.99%
82 - WESTCHESTER CIRC												
97	169	190	-11.05%	160	170	-5.88%	146	126	15.87%	4,924	5,590	-11.91%
115												
152	352	359	-1.95%	198	184	7.61%	155	148	4.73%	8,961	9,421	-4.88%
155 - BISCAYNE GARDENS CIRC												
202 - LITTLE HAITI CONN												
211 OVERTOWN CIRCULATOR												
212-SWEETWATER CIRC												
217 - BUNCHE PARK CIRC												
254-BROWNSVILLE CIRC												
267-LUDLAM LIMITED												
286-NORTH POINTE CIRC												
344	124	149	-16.78%	73	95	-23.16%				2,891	3,743	-22.76%
401 - NORTH OWL	71	62	14.52%	71	61	16.39%	341	53	543.40%	2,105	1,883	11.79%
MetroLink NoMi West	296	304	-2.63%							6,220	6,694	-7.08%
MetroLink North Miami												
MetroLink LeJeune												
MetroLink Killian Parkway												
MetroLink Opa-Locka												
Subtotal Contracted Reg. & Circ. Local	5,166	5,186	-0.39%	3,120	2,868	8.79%	2,728	2,128	28.20%	133,246	137,059	-2.78%
Percentage of All Bus Routes	3.24%	2.94%		3.10%	2.64%		3.58%	2.67%		3.08%	2.84%	

- (1) Several express routes were suspended beginning at the end of Mar-20, due to the SARS-CoV-2 pandemic, while other routes had alignment and schedule modifications made to them, in an ongoing effort to optimize service delivery.
- (2) A second major round of changes took place with the 11/13/23 lineup known as the Better Bus Network, as listed at the start of this Metrobus section.

BUS RIDERSHIP BY ROUTE SERVICE COMPARISON (MONTH-OVER-MONTH)

Boardings by Service Type and Route	Average Weekday	Average Weekday	Percent Change	Average Saturday	Average Saturday	Percent Change	Average Sunday	Average Sunday	Percent Change	Total Monthly	Total Monthly	Percent Change
	Jun-25	May-25	MOM	Jun-25	May-25	MOM	Jun-25	May-25	MOM	Jun-25	May-25	MOM
Contracted Express Routes												
301-DADE MONROE EXPRESS	1,497	1,443	3.74%	862	1,526	-43.51%	1,393	1,368	1.83%	43,155	44,861	-3.80%
302-CARD SOUND EXPRESS	124	114	8.77%	127	141	-9.93%	105	112	-6.25%	3,538	3,667	-3.52%
Subtotal Contracted Express Routes	1,621	1,557	4.11%	989	1,667	-40.67%	1,498	1,480	1.22%	46,693	48,528	-3.78%
Percentage of All Bus Routes	1.02%	0.88%		0.98%	1.53%		1.97%	1.86%		1.08%	1.01%	
Limited Stop Routes												
24-CORAL WAY LIMITED	1,974	2,248	-12.19%	1,333	1,493	-10.72%	900	996	-9.64%	53,933	63,008	-14.40%
38 TRANSITWAY MAX	4,801	5,562	-13.68%	3,416	3,820	-10.58%	2,983	3,319	-10.12%	149,547	173,298	-13.71%
203 - BISCAYNE MAX	813	891	-8.75%							17,502	19,593	-10.67%
204 KILLIAN MAX	543	597	-9.05%							12,145	13,140	-7.57%
211 - FLAGLER MAX	1,421	1,563	-9.09%							32,137	37,246	-13.72%
241 TUTTLE LIMITED												
272 SUNSET MAX (*)	311	328	-5.18%							6,525	7,207	-9.46%
277-7TH AVENUE MAX												
279 - 79 STREET MAX	583	674	-13.50%							12,648	14,830	-14.71%
287-SAGA BAY MAX	265	313	-15.34%							5,896	6,892	-14.45%
288 KENDALL MAX	428	485	-11.75%							9,289	10,680	-13.02%
297-27th AVENUE ORANGE MAX												
Subtotal Limited Stop Routes	11,139	12,661	-12.02%	4,749	5,313	-10.62%	3,883	4,315	-10.01%	299,622	345,894	-13.38%
Percentage of All Bus Routes	7.00%	7.17%		4.71%	4.88%		5.10%	5.42%		7%	7%	
Directly Operated Free Routes												
132 -TRI-RAIL DORAL SHUTTLE	37	49	-24.49%							909	1,081	-15.91%
500 - CUTLER BAY LOCAL	130	169	-23.08%	140	167	-16.17%	74	82	-9.76%	4,065	4,886	-16.80%
510 - SKYLAKE CIRCULATOR (*)	281	326	-13.80%	144	128	12.50%	127	123	3.25%	7,108	8,293	-14.29%
Subtotal Free Directly Operated Routes	448	544	-17.65%	284	295	-3.73%	201	205	-1.95%	12,082	14,260	-15.27%
Percentage of All Bus Routes	0.28%	0.31%		0.28%	0.27%		0.26%	0.26%		0.28%	0.30%	
Contractor-Operated Lifeline Routes												
GREEN HILLS SHUTTLE	7	9	-22.22%							33	26	26.92%
KINGS CREEK SHUTTLE	8	9	-11.11%							32	45	-28.89%
MEEK / MARQUESS SHUTTLE	14	21	-33.33%							57	84	-32.14%
SIERRA LAKES SHUTTLE	21	18	16.67%							85	92	-7.61%
ROBERT SHARP SHUTTLE	31	37	-16.22%							123	148	-16.89%
AHEPA SHUTTLE	22	19	15.79%							89	94	-5.32%
FEDERATION GARDENS SHUTTLE				23	27	-14.81%				93	116	-19.83%
Subtotal Contractor-Operated Lifeline Routes	103	113	-8.85%	23	27	-14.81%				512	605	-15.37%
Percentage of All Bus Routes	0.06%	0.06%		0.02%	0.02%					0.01%	0.01%	
All Other (Regular) Routes	135,504	150,536	-9.99%	90,129	97,108	-7.19%	64,501	68,086	-5.27%	3,698,495	4,129,387	-10.43%
Percentage of All Bus Routes	85.11%	85.28%		89.46%	89.24%		84.74%	85.54%		85.48%	85.53%	
Total Bus System	159,209	176,515	-9.80%	100,751	108,816	-7.41%	76,112	79,591	-4.37%	4,326,886	4,828,273	-10.38%

BUS RIDERSHIP BY ROUTE SERVICE TYPE LINEUPS COMPARISON (MONTH-OVER-20 MONTH)

Boardings by Service Type and Route	Average Weekday	Average Weekday	Percent Change	Average Saturday	Average Saturday	Percent Change	Average Sunday	Average Sunday	Percent Change	Total Monthly	Total Monthly	Percent Change
	Jun-25	Oct-23	25 vs 23	Jun-25	Oct-23	25 vs 23	Jun-25	Oct-23	25 vs 23	Jun-25	Oct-23	25 vs 23
Directly Operated Express Routes												
34 TRANSITWAY EXPRESS	1,449	1,636	-11.43%							35,532	36,002	-1.31%
39 TRANSITWAY EXPRESS	787	742	6.06%							18,138	16,333	11.05%
95-EXPRESS GOLDEN GLADES	1,185	1,195	-0.84%							30,159	26,295	14.69%
150-MIAMI BEACH AIRPORT EXPRESS	1,307	2,149	-39.18%	1,223	2,161	-43.41%	1,160	1,966	-0.41	39,595	65,763	-39.79%
338 - WEEKEND EXPRESS				177	259	-31.66%	151	247	-0.3887	1,545	2,274	-32.06%
836 EXPRESS	299	247	21.05%							6,833	5,428	25.88%
837 EXPRESS	201	195	3.08%							4,523	4,281	5.65%
Subtotal Express Routes	5,228	6,164	-15.18%	1,400	2,420	-42.15%	1,311	2,213	-0.40759	136,325	156,376	-12.82%
Percentage of All Bus Routes	3.25%	3.33%		1.39%	2.25%		1.72%	2.72%		3.15%	3.18%	
Contracted Routes - Local Service (*)												
2	2,108	2,977	-29.19%	1,188	1,605	-25.98%	1,014	1,214	-0.1647	54,094	77,976	-30.63%
15	576	178	223.60%	553	93	494.62%	496	53	8.35849	16,794	4,545	269.50%
29		516								11,342	477	
46 - LIBERTY CITY CONN.		22										
56	263	391	-32.74%	90						5,881	8,598	-31.60%
new 57	189			76						4,274		
70	239	161	48.45%	186			179			6,656	3,546	87.70%
72	779	670	16.27%	525	357	47.06%	397	259	0.53282	20,446	17,459	17.11%
82 - WESTCHESTER CIRC		61			38						1,488	
97	169	225	-24.89%	160	163	-1.84%	146	149	-0.0201	4,924	6,337	-22.30%
115		151			80			66	-1		3,968	-100.00%
152	352	1,051	-66.51%	198	375		155	331	-0.5317	8,961	26,285	-65.91%
155 - BISCAYNE GARDENS CIRC		45									985	
202 - LITTLE HAITI CONN		110			22			21	-1		2,620	
211 OVERTOWN CIRCULATOR		71									1,567	
212-SWEETWATER CIRC		22									494	
217 - BUNCHE PARK CIRC		80									1,759	
254-BROWNSVILLE CIRC		5									105	
267-LUDLAM LIMITED		162									3,567	
286-NORTH POINTE CIRC		93			61						2,279	
344	124	76	63.16%	73						2,891	1,666	73.53%
401 - NORTH OWL	71	61	16.39%	71	61	16.39%	341	65	4.24615	2,105	1,899	10.85%
MetroLink NoMi West	296											
MetroLink North Miami												
MetroLink Leleune												
MetroLink Killian Parkway												
MetroLink Opa-Locka												
Subtotal Contracted Reg. & Circ. Routes	5,166	7,128	-27.53%	3,120	2,855	9.28%	2,728	2,158	0.264133	127,026	178,962	-29.02%
Percentage of All Bus Routes	3.21%	3.85%		3.10%	2.66%		3.58%	2.65%		2.94%	3.64%	

- (1) Several express routes were suspended beginning at the end of Mar20, due to the SARS-CoV-2 pandemic, while other routes had alignment and schedule modifications made to them, in an ongoing effort to optimize service delivery.
- (2) A second major round of changes took place with the 11/13/23 lineup known as the Better Bus Network, as listed at the start of this Metrobus section.

BUS RIDERSHIP BY ROUTE SERVICE TYPE LINEUPS COMPARISON (MONTH-OVER-20 MONTH)

Boardings by Service Type and Route	Average Weekday	Average Weekday	Percent Change	Average Saturday	Average Saturday	Percent Change	Average Sunday	Average Sunday	Percent Change	Total Monthly	Total Monthly	Percent Change
	Jun-25	Oct-23	25 vs 23	Jun-25	Oct-25	25 vs 23	Jun-25	Oct-23	25 vs 23	Jun-25	23-Oct	25 vs 23
Contracted Express Routes												
301-DADE MONROE EXPRESS	1,497	955	56.75%	862	885	-2.60%	1,393	867	60.67%	43,155	28,889	49.38%
302-CARD SOUND EXPRESS	124	91	36.26%	127	94	35.11%	105	72	45.83%	3,538	2,728	29.69%
Subtotal Contracted Express Routes	1,621	1,046	54.97%	989	979	1.02%	1,498	939	59.53%	46,693	31,617	47.68%
Percentage of All Bus Routes	1.02%	0.56%		0.98%	0.91%		1.97%	1.15%		1.08%	0.64%	
Limited Stop Routes												
24-CORAL WAY LIMITED	1,974	2,195	-10.07%	1,333	1,400	-4.79%	900	1,108	-18.77%	53,933	59,432	-9.25%
38 TRANSITWAY MAX	4,801	5,714	-15.98%	3416	6,328	-46.02%	2,983	4,957	-39.82%	149,547	175,803	-14.93%
203 - BISCAYNE MAX	813	3,666	-77.82%							17,502	80,650	-78.30%
204 KILLIAN MAX	543	620	-12.42%							12,145	13,632	-10.91%
211 - FLAGLER MAX	1,421	3,824	-62.84%							32,137	84,135	-61.80%
241 TUTTLE LIMITED		348			222			187			9,471	
272 SUNSET MAX (*)	311	428	-27.34%							6,525	9,423	-30.75%
277-7TH AVENUE MAX		879									19,345	
279 - 79 STREET MAX	583	469	24.31%							12,648	10,318	22.58%
287-SAGA BAY MAX	265	341	-22.29%							5,896	7,499	-21.38%
288 KENDALL MAX	428	372	15.05%							9,289	8,189	13.43%
297-27th AVENUE ORANGE MAX		1,229									27,047	
Subtotal Limited Stop Routes	11,139	18,856	-40.93%	4,749	7,728	-38.55%	3,883	6,252	-37.89%	299,622	504,944	-40.66%
Percentage of All Bus Routes	7.00%	10.17%		4.71%	7.20%		5.10%	7.68%		6.92%	10.28%	
Directly Operated Free Routes												
132 -TRI-RAIL DORAL SHUTTLE	37	37	0.00%							909	804	13.06%
500 - CUTLER BAY LOCAL	130	176	-26.14%	140	152	-7.89%	74	86	-13.95%	4,065	4,907	-17.16%
510 - SKYLAKE CIRCULATOR (*)	281	471	-40.34%	144	217	-33.64%	127	194	-34.54%	7,108	12,211	-41.79%
Subtotal Free Directly Operated Routes	448	684	-34.50%	284	369	-23.04%	201	280	-28.21%	12,082	17,922	-32.59%
Percentage of All Bus Routes	0.28%	0.37%		0.28%	0.34%		0.26%	0.34%		0.28%	0.36%	
Contractor-Operated Lifeline Routes												
GREEN HILLS SHUTTLE	7	5	40.00%							33	26	26.92%
KINGS CREEK SHUTTLE	8	14	-42.86%							32	55	-41.82%
MEEK / MARQUESS SHUTTLE	14									57		
SIERRA LAKES SHUTTLE	21	16	31.25%							85	62	37.10%
ROBERT SHARP SHUTTLE	31	23	34.78%							123	92	33.70%
AHEPA SHUTTLE	22	18	22.22%							89	71	25.35%
FEDERATION GARDENS SHUTTLE				23	20	15.00%				93	80	16.25%
Subtotal Contractor-Operated Lifeline Routes	103	76	35.53%	23	20	15.00%				512	386	32.64%
Percentage of All Bus Routes	0.06%	0.04%		0.02%	0.02%					0.01%	0.01%	
All Other (Regular) Routes	135,504	150,140	-9.75%	90,129	92,739	-2.81%	64,501	69,584	-7.30%	3,698,495	4,021,944	-8.04%
Percentage of All Bus Routes	85.11%	81.02%		89.46%	86.40%		84.74%	85.46%		85.48%	81.88%	
Total Bus System	159,209	185,320	-14.09%	100,751	107,331	10.60%	76,112	81,427	-6.53%	4,326,886	4,912,151	-11.91%

Bus Routes as Ranked by Percentage of Average Weekday Ridership June 2025

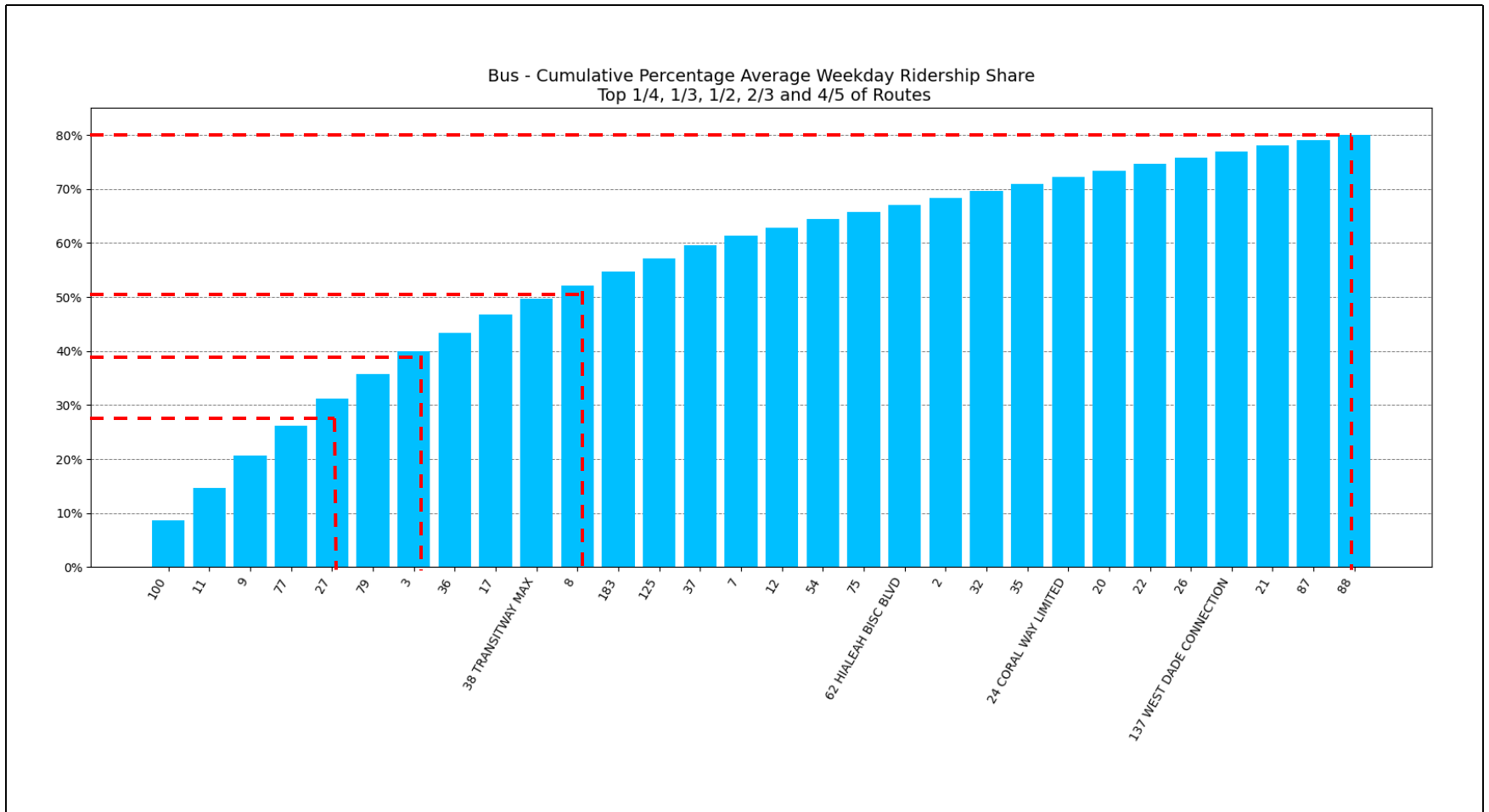
Rank	Route	Average Weekday	Percent Share	Cumul Pct Share	Rank	Route	Average Weekday	Percent Share	Cumul Pct Share	Rank	Route	Average Weekday	Percent Share	Cumul Pct Share
1	100	14,063	8.7%	8.7%	32	199	1,643	1.0%	81.2%	63	56	263	0.2%	97.9%
2	11	9,672	6.0%	14.7%	33	107	1,590	1.0%	82.2%	64	70	239	0.1%	98.0%
3	9	9,459	5.9%	20.6%	34	135	1,499	0.9%	83.1%	65	837	201	0.1%	98.2%
4	77	9,268	5.8%	26.4%	35	301	1,497	0.9%	84.0%	66	new 57	189	0.1%	98.3%
5	27	7,804	4.8%	31.2%	36	208	1,481	0.9%	84.9%	67	97	169	0.1%	98.4%
6	79	7,381	4.6%	35.8%	37	34	1,449	0.9%	85.8%	68	500	130	0.1%	98.5%
7	3	6,709	4.2%	40.0%	38	40	1,438	0.9%	86.7%	69	136	130	0.1%	98.6%
8	36	5,536	3.4%	43.4%	39	211	1,421	0.9%	87.6%	70	344	124	0.1%	98.6%
9	17	5,367	3.3%	46.7%	40	103	1,414	0.9%	88.5%	71	302	124	0.1%	98.7%
10	38	4,801	3.0%	49.7%	41	52	1,335	0.8%	89.3%	72	401	71	0.0%	98.8%
11	8	4,070	2.5%	52.2%	42	150	1,307	0.8%	90.1%	73	400	65	0.0%	98.8%
12	183	4,037	2.5%	54.8%	43	207	1,281	0.8%	90.9%	74	132	37	0.0%	98.8%
13	125	3,974	2.5%	57.2%	44	95	1,185	0.7%	91.7%	75	RS	31	0.0%	98.8%
14	37	3,843	2.4%	59.6%	45	73	1,058	0.7%	92.3%	76	AS	22	0.0%	98.8%
15	7	2,922	1.8%	61.4%	46	104	938	0.6%	92.9%	77	SL	21	0.0%	98.9%
16	12	2,416	1.5%	62.9%	47	14	866	0.5%	93.4%	78	M/M	14	0.0%	98.9%
17	54	2,340	1.5%	64.4%	48	203	813	0.5%	93.9%	79	KC	8	0.0%	98.9%
18	75	2,283	1.4%	65.8%	49	39	787	0.5%	94.4%	80	GH	7	0.0%	98.9%
19	62	2,136	1.3%	67.1%	50	72	779	0.5%	94.9%	entirely contracted in June-25				
21	2	2,108	1.3%	68.4%	52	101	607	0.4%	95.3%					
22	32	2,088	1.3%	69.7%	53	279	583	0.4%	95.7%					
23	35	2,015	1.3%	71.0%	54	15	576	0.4%	96.0%					
24	24	1,974	1.2%	72.2%	55	204	543	0.3%	96.3%					
25	20	1,941	1.2%	73.4%	56	288	428	0.3%	96.6%					
26	22	1,937	1.2%	74.6%	57	152	352	0.2%	96.8%					
27	26	1,934	1.2%	75.8%	58	272	311	0.2%	97.0%					
28	137	1,810	1.1%	76.9%	59	836	299	0.2%	97.2%					
29	21	1,759	1.1%	78.0%	60	8000	296	0.2%	97.4%					
30	87	1,733	1.1%	79.1%	61	510	281	0.2%	97.6%					
31	88	1,666	1.0%	80.1%	62	287	265	0.2%	97.7%					
											Total Boardings		161,018	100.00%

(1) Average weekday ridership rounded to the nearest unit.

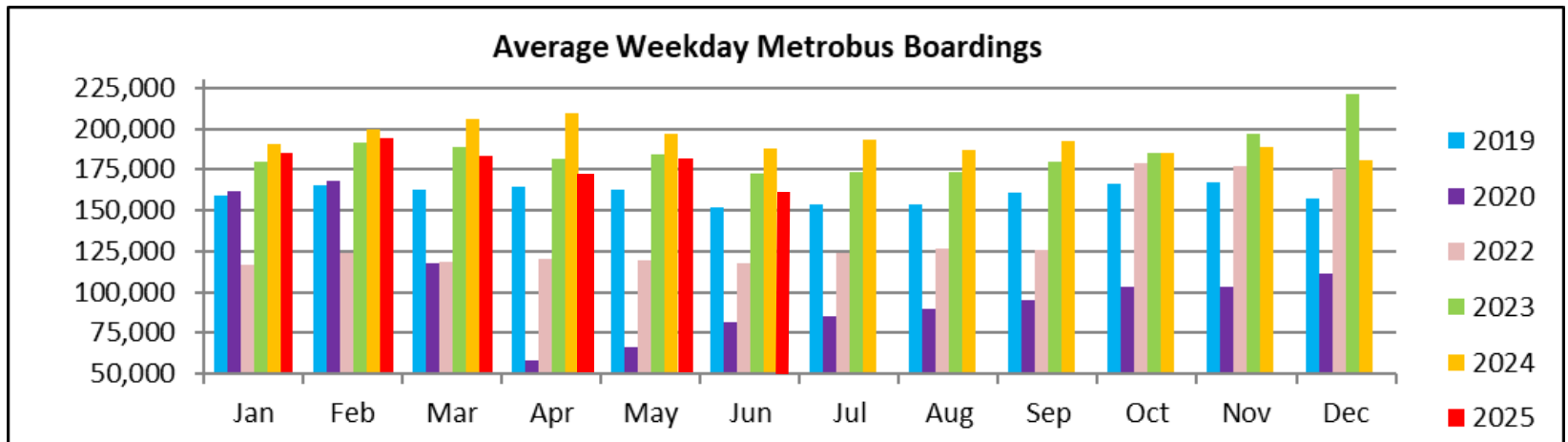
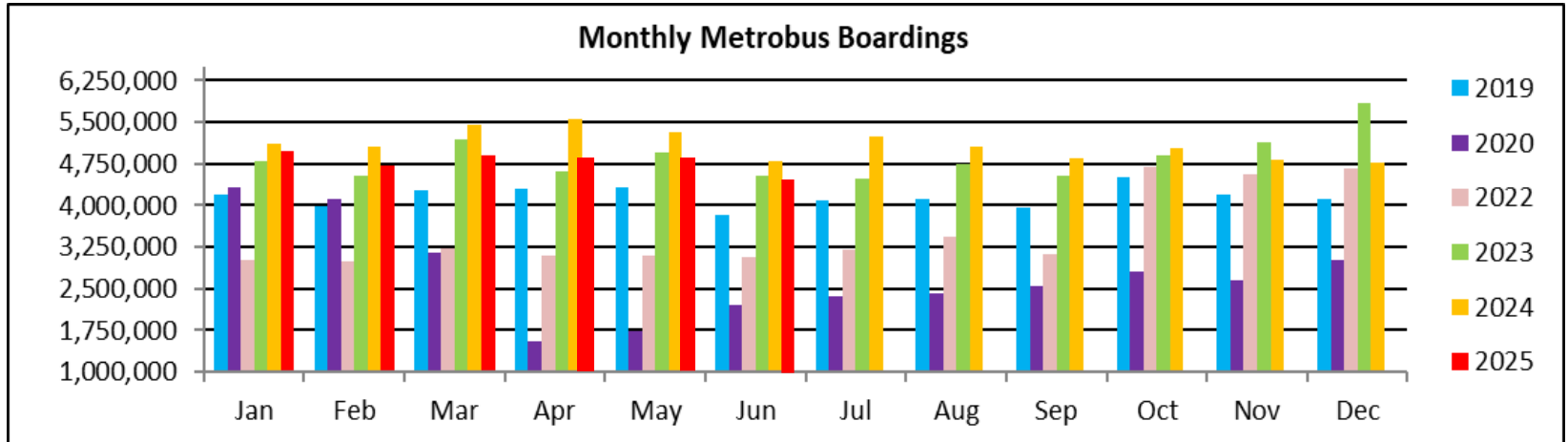
(2) Includes the five Lifeline Shuttles that operate on weekdays: Ahepa (AS), Green Hills (GH), Kings Creek (KC), Meek/Marquess (M/M), Robert Sharp (RS) and Sierra Lakes (SL).

(3) Routes 8000, 8001, 8002, 8003 and 8005 refer to the five Better Bus Network MetroLink contracted supplemental routes, launched in July and August 2024 and still running: MetroLink NoMi West, MetroLink North Miami, MetroLink LeJeune, MetroLink Killian Parkway, and MetroLink Opa-Locka, respectively.

METROBUS CUMULATIVE PERCENTAGE RIDERSHIP SHARE – BY ROUTE



TOTAL MONTHLY AND AVERAGE WEEKDAY RIDERSHIP YEAR OVER YEAR COMPARISON CHARTS – METROBUS



**“TOP 10 / BOTTOM 10” BUS ROUTES AVERAGE WEEKDAY RIDERSHIP PERFORMANCE
YEAR OVER YEAR COMPARISON**

Route	25-Jun	24-Jun	Absolute Delta	Percent Delta
56	2,136	531	1,605	302.26%
301 DADE MONROE EXPRESS	1,497	1,019	478	46.91%
32	2,088	1,802	286	15.87%
39 TRANSITWAY EXPRESS	787	730	57	7.81%
15	576	539	37	6.86%
2	2,108	2,076	32	1.54%
302	124	105	19	18.10%
837 EXPRESS	201	193	8	4.15%
344	124	118	6	5.08%
401 SOUTH OWL	71	68	3	4.41%

77	9,268	11,448	-2,180	-19.04%
38 TRANSITWAY MAX	4,801	6,911	-2,110	-30.53%
100	14,063	16,084	-2,021	-12.57%
9	9,459	11,386	-1,927	-16.92%
20	1,941	3,765	-1,824	-48.45%
27	7,804	9,618	-1,814	-18.86%
17	5,367	6,673	-1,306	-19.57%
3	6,709	8,012	-1,303	-16.26%
79	7,381	8,651	-1,270	-14.68%
11	9,672	10,899	-1,227	-11.26%

(*) Averages rounded to the nearest boarding, data as estimated from automatic passenger counter (APC) system; Lifeline shuttles excluded.

“TOP 10 / BOTTOM 10” BUS ROUTES SETS AVERAGE WEEKDAY RIDERSHIP PERFORMANCE YEAR OVER YEAR COMPARISON

Route Set (*), (1), (2)	25-Jun	24-Jun	Absolute		Percent	routes included in set
			Delta	Delta		
301	1,497	1,443	54	3.74%		301
{2}	3,529	3,483	46	1.32%		2, 211
302	124	114	10	8.77%		302
401	71	62	9	14.52%		401
132	37	49	-12	-24.49%		132
136	130	144	-14	-9.72%		136
15	576	592	-16	-2.70%		15
272	311	328	-17	-5.18%		272
97	169	190	-21	-11.05%		97
836	299	330	-31	-9.39%		836
{17 & 22 & 75}	9,587	11,313	-1,726	-15.26%		17, 22, 75, 108, 217
{11}	9,672	10,693	-1,021	-9.55%		11, 212
{9}	9,459	10,475	-1,016	-9.70%		9, 10, 16
{ 100 }	14,063	15,070	-1007	-6.68%		100, 105, 119, 120
{new 211}	9,275	10,253	-978	-9.54%		8, 24, 51, 82, 137, new 211
{ 37 & 54 }	6,183	7,018	-835	-11.90%		29, 37, 42, 54, 254
{38}	4,925	5,711	-786	-13.76%		31, 38, 344
{279}	7,964	8,685	-721	-8.30%		79, 112, 279
{73 & 183}	5,095	5,778	-683	-11.82%		57, 73, 183, 238, 267, 286
{77}	9,268	9,817	-549	-5.59%		77, 277

(*) Averages rounded to the nearest boarding, data as estimated from automatic passenger counter (APC) system; Lifeline shuttles excluded.

(1) The route sets, denoted by brackets, include the new 11/13/2023 lineup's Better Bus Network route designations, as well as older routes present for the first part of the month and previous months and years, then either renamed, absorbed, or eliminated. The sets were defined to enable reasonably fair comparisons between pre- and post-BBN timeframes, to the extent possible and practical, given the complexity of the changes for some of the routes and sets. The definitions were based on information from the DTPW website, and subject to future adjustments, if necessary.

(2) The adjective "new" in front of some new Better Bus Network-generated (recycled) route numbers was added to help distinguish those routes from older but different routes with the same number present in previous months or years.

**“TOP 10 / BOTTOM 10” BUS ROUTES SETS AVERAGE WEEKDAY RIDERSHIP PERFORMANCE
MONTH OVER 20-MONTH PRIOR COMPARISON**

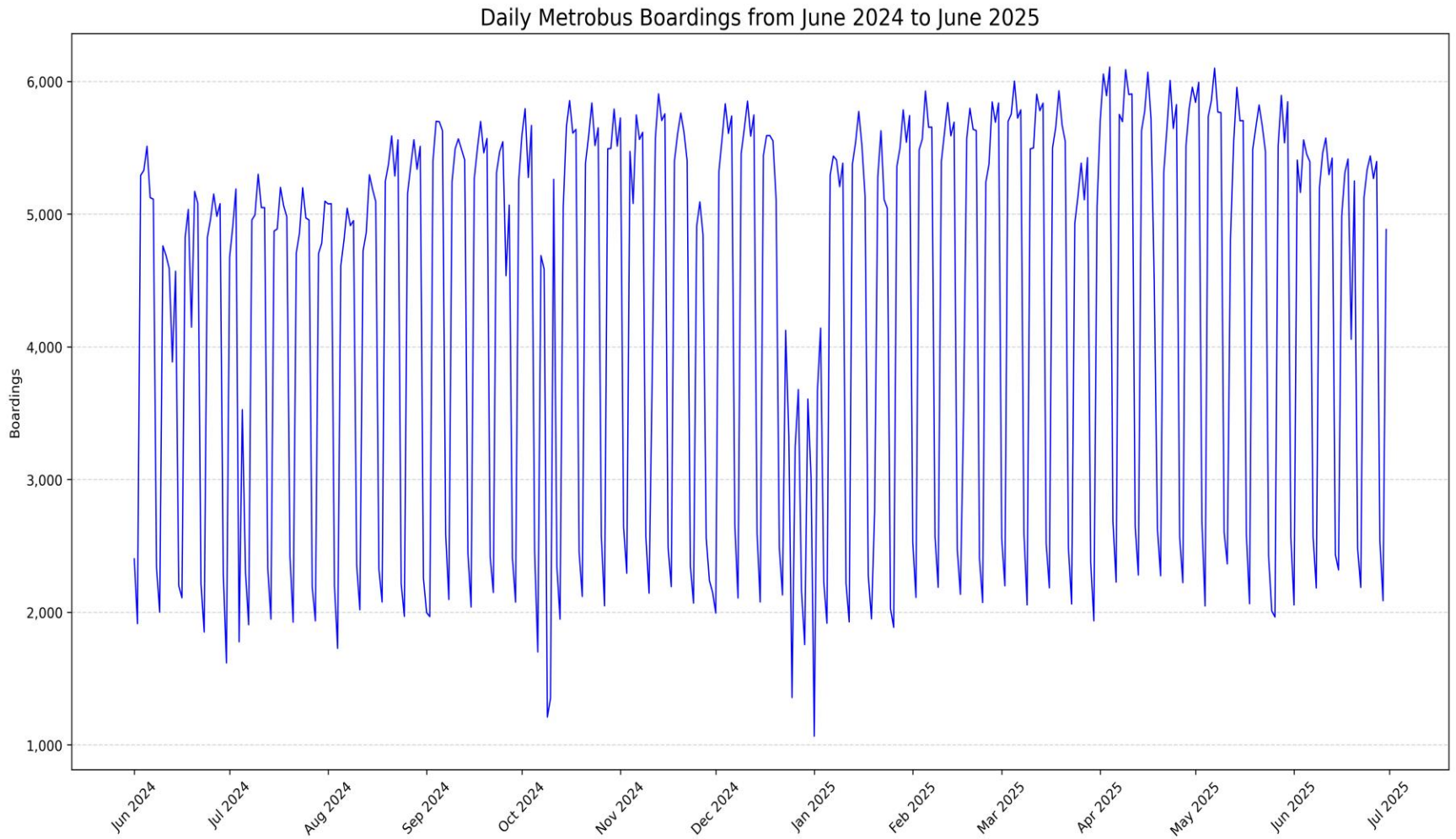
Route Set (*), (1), (2)	25-Jun	23-Oct	Absolute Delta	Percent Delta	routes included in set
{100}	14,063	6,128	7935	129.49%	100, 105, 119, 120
{9}	9,459	6,490	2969	45.75%	9, 10, 16
{36}	5,536	2,645	2891	109.30%	36, 110
{125}	5,564	2,834	2730	96.33%	19, 107, 125
{20}	4,029	2,699	1330	49.28%	20, 32, 115
{27}	7,804	7,110	694	9.76%	27, 297
301	1,497	955	542	56.75%	301
15	576	178	398	223.60%	15
72	779	670	109	16.27%	72
26	1,934	1,877	57	3.04%	26
{new 211}	9,275	12,788	-3513	-27.47%	8,24,51,82,137,new 211
{2}	3,529	6,801	-3272	-48.11%	2, 211
{3 & 203}	7,522	9,082	-1560	-17.18%	3, 93, 203
{73 & 183}	5,095	6,521	-1426	-21.87%	57, 73, 183, 238, 267, 286
7	2,922	4,021	-1099	-27.33%	7
{279}	7,964	8,950	-986	-11.02%	29, 37, 42, 54, 254
40	1,438	2,344	-906	-38.65%	40
{38}	4,925	5,790	-865	-14.94%	31, 38, 344
150	1,307	2,149	-842	-39.18%	150
{52}	1,687	2,441	-754	-30.89%	52, 152, 252

(*) Averages rounded to the nearest boarding, data as estimated from automatic passenger counter (APC) system; Lifeline shuttles excluded.

(1) The route sets, denoted by brackets, include the new 11/13/2023 lineup's Better Bus Network route designations, as well as older routes present for the first part of the month and previous months and years, then either renamed, absorbed, or eliminated. The sets were defined to enable reasonably fair comparisons between pre- and post-BBN timeframes, to the extent possible and practical, given the complexity of the changes for some of the routes and sets. The definitions were based on information from the DTPW website, and subject to future adjustments, if necessary.

(2) The adjective "new" in front of some new Better Bus Network-generated (recycled) route numbers was added to help distinguish those routes from older but different routes with the same number present in previous months or years.

DAILY METROBUS RIDERSHIP (12-Month Period)



METROBUS PARKING PATRONAGE SUMMARY

June 2025

PARK-RIDE LOT	ACTUAL AVAILABLE SPACES	ACTUAL OCCUPANCY	PERCENT OCCUPANCY
Transitway / SW 152nd Street	200	81	41%
Transitway / SW 168th Street (*)	149	0	0%
Transitway / SW 200th Street (**)	100	0	0%
Transitway / SW 112 Avenue (eff 7-2009)	450	166	37%
Transitway / SW 244th Street	95	46	48%
Transitway / SW 296th Street	139	26	19%
Transitway / SW 344th Street (eff 6-2015)	248	184	74%
Coral Reef Drive / 117 Ave Turnpike	95	93	98%
Golden Glades Facility	2,150	464	22%
Hammocks Town Center (SW 152 Ave / SW 104 St)	50	20	40%
Kendall Dr./SW 127th Avenue	161	2	1%
West Kendall Transit Term (Kendall Dr/SW 162 Ave)	40	22	55%
NW 7th Avenue Transit Village (NW 7 Ave / NW 62 St)	25	25	100%
Miami Gardens Dr./NW 73rd Avenue	136	0	0%
Dolphin Station	348	99	28%
Tamiami Station (eff 11-2022)	442	91	21%
* I-75 / Miami Gardens Dr. (***)	298	0	0%
TOTAL	5,126	1,319	26%

(*) Closed for construction beginning February 2022

(**) Closed for construction beginning February 2025

(***) Route 175 suspended 3/27/2020, discontinued with Better Bus Network 11/13/23

Metrorail



METRORAIL AVERAGE WEEKDAY BOARDINGS BY STATION (†)

Weekdays	Average Weekday	Average Weekday	Percent Change	Average Weekday	Percent Change	Average Weekday	Percent Change	Average Weekday	Percent Change
STATIONS	June-25	June-24	YOY	Feb-20	Current vs Feb-20	May-25	MOM	June-19	YO6Y
Allapattah	1,523	1,583	-3.79%	1,942	-21.58%	1,630	-6.56%	1,697	-10.25%
Brickell	5,012	4,966	0.93%	6,529	-23.23%	5,348	-6.28%	5,720	-12.38%
Brownsville	458	561	-18.36%	862	-46.87%	513	-10.72%	765	-40.13%
Coconut Grove	1,281	1,681	-23.80%	6,143	-79.15%	235	445.11%	1,478	-13.33%
Culmer	452	818	-44.74%	1,795	-74.82%	511		1,109	-59.24%
Dadeland North	4,496	3,878	15.94%	1,392	222.99%	4,836	-7.03%	5,222	-13.90%
Dadeland South	4,032	4,349	-7.29%	5,926	-31.96%	4,356	-7.44%	6,368	-36.68%
Douglas Road	2,798	2,873	-2.61%	7,150	-60.87%	3,582	-21.89%	3,115	-10.18%
Dr. Martin Luther King Jr.	844	883	-4.42%	3,624	-76.71%	899	-6.12%	1,050	-19.62%
Earlington Heights	1,258	1,134	10.93%	1,157	8.73%	1,346	-6.54%	1,425	-11.72%
Government Center	6,427	5,909	8.77%	1,662	286.70%	6,806	-5.57%	9,042	-28.92%
Hialeah	983	1,203	-18.29%	10,557	-90.69%	1,180	-16.69%	1,180	-16.69%
Miami International Airport	1,201	1,364	-11.95%	1,253	-4.15%	1,240	-3.15%	1,495	-19.67%
Northside	1,170	1,238	-5.49%	1,711	-31.62%	1,242	-5.80%	1,285	-8.95%
Okeechobee	739	979	-24.51%	1,476	-49.93%	904	-18.25%	1,102	-32.94%
Overtown	2,178	1,764	23.47%	1,164	87.11%	2,209	-1.40%	2,068	5.32%
Palmetto	1,306	1,215	7.49%	2,274	-42.57%	1,378	-5.22%	1,355	-3.62%
Santa Clara	763	746	2.28%	1,543	-50.55%	791	-3.54%	680	12.21%
South Miami	2,049	2,014	1.74%	812	152.34%	2,194	-6.61%	2,612	-21.55%
Tri-Rail	969	1,102	-12.07%	3,015	-67.86%	1,017	-4.72%	1,071	-9.52%
UHealth Jackson	4,163	4,405	-5.49%	1,207	244.90%	4,621	-9.91%	5,514	-24.50%
University	1,372	983	39.57%	2,784	-50.72%	1,567	-12.44%	1,749	-21.56%
Vizcaya	1,331	1,100	21.00%	1,390	-4.24%	1,574	-15.44%	1,074	23.93%
TOTAL	46,804	46,748	0.12%	67,367	-30.52%	49,977	-6.35%	58,176	-19.55%

(†) In this table and those which follow, "YOY" stands for "year-over-year", "MOM" for "month-over-month" and, e.g., "YO6Y" for "year over six years", i.e., current month vs 12 months prior, one month prior, and 72 months prior, respectively. The Feb-20 numbers serve as a strong pre-pandemic benchmark.

(*) Coconut Grove Station was closed for renovations during the entire month.

METRORAIL AVERAGE SATURDAY BOARDINGS BY STATION

Saturdays	Average Saturday	Average Saturday	Percent Change	Average Saturday	Percent Change	Average Saturday	Percent Change	Average Saturday	Percent Change
STATIONS	June-25	June-24	YOY	Feb-20	Current vs Feb-20	May-25	MOM	June-19	YO6Y
Allapattah	860	847	1.53%	1,051	-18.17%	904	-4.87%	934	-7.92%
Brickell	2,449	2,312	5.93%	2,811	-12.88%	2,467	-0.73%	2,459	-0.41%
Brownsville	280	323	-13.31%	520	-46.15%	287	-2.44%	483	-42.03%
Coconut Grove	714	841	-15.10%	959	-25.55%	139	413.67%	746	-4.29%
Culmer	243	457	-46.83%	928	-73.81%	226		621	-60.87%
Dadeland North	1,507	1,215	24.03%	721	109.02%	1,663	-9.38%	1,662	-9.33%
Dadeland South	1,637	1,725	-5.10%	1,994	-17.90%	1,700	-3.71%	2,239	-26.89%
Douglas Road	1,369	1,329	3.01%	2,625	-47.85%	1,610	-14.97%	1,120	22.23%
Dr. Martin Luther King Jr.	522	542	-3.69%	1,319	-60.42%	528	-1.14%	570	-8.42%
Earlington Heights	715	643	11.20%	625	14.40%	712	0.42%	830	-13.86%
Government Center	2,748	2,435	12.85%	935	193.90%	2,782	-1.22%	3,304	-16.83%
Hialeah	456	554	-17.69%	4,262	-89.30%	548	-16.79%	541	-15.71%
Miami International Airport	792	967	-18.10%	583	35.85%	851	-6.93%	1,158	-31.61%
Northside	689	770	-10.52%	1,330	-48.20%	714	-3.50%	776	-11.21%
Okeechobee	285	412	-30.83%	878	-67.54%	339	-15.93%	377	-24.40%
Overtown	836	525	59.24%	408	104.90%	814	2.70%	539	55.10%
Palmetto	374	382	-2.09%	678	-44.84%	388	-3.61%	365	2.47%
Santa Clara	376	365	3.01%	458	-17.90%	405	-7.16%	380	-1.05%
South Miami	902	935	-3.53%	422	113.74%	962	-6.24%	1,075	-16.09%
Tri-Rail	420	505	-16.83%	1,256	-66.56%	461	-8.89%	493	-14.81%
UHealth Jackson	645	725	-11.03%	614	5.05%	754	-14.46%	887	-27.28%
University	474	322	47.20%	714	-33.61%	524	-9.54%	467	1.50%
Vizcaya	681	509	33.79%	622	9.49%	674	1.04%	517	31.72%
TOTAL	19,973	19,644	1.67%	26,714	-25.23%	20,449	-2.33%	19,973	0.00%

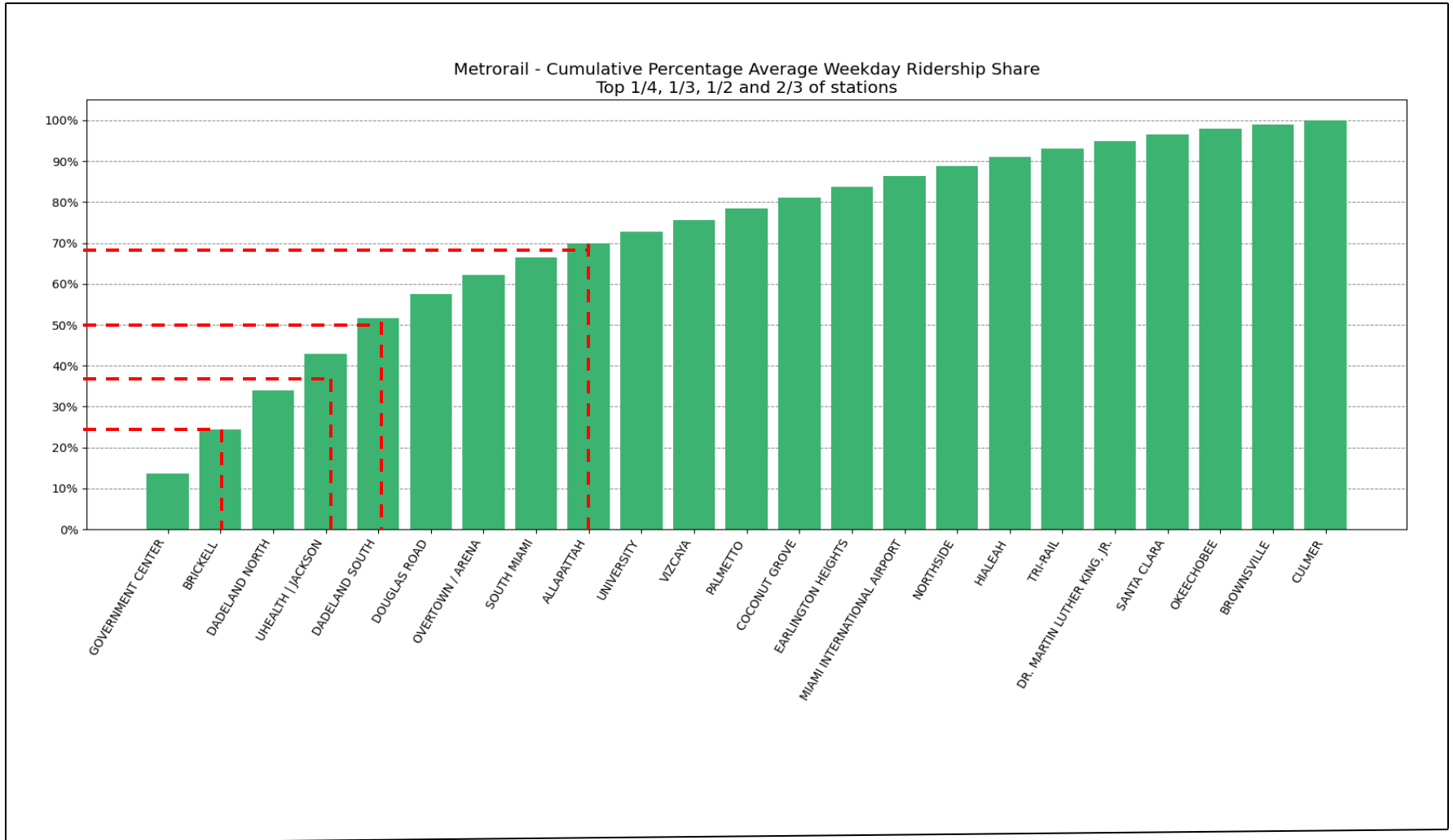
METRORAIL AVERAGE SUNDAY BOARDINGS BY STATION

Sundays	Average Sunday	Average Sunday	Percent Change	Average Sunday	Percent Change	Average Sunday	Percent Change	Average Sunday	Percent Change
STATIONS	June-25	June-24	YOY	Feb-20	Current vs Feb-20	May-25	MOM	June-19	YO6Y
Allapattah	586	598	-2.01%	791	-25.92%	495	18.38%	682	-14.08%
Brickell	1,772	1,723	2.84%	2,379	-25.51%	1,477	19.97%	1,865	-4.99%
Brownsville	190	238	-20.17%	406	-53.20%	171	11.11%	348	-45.40%
Coconut Grove	489	630	-22.38%	791	-38.18%	65	652.31%	553	-11.57%
Culmer	183	326	-43.87%	838	-78.16%	140		496	-63.10%
Dadeland North	990	841	17.72%	616	60.71%	871	13.66%	1,163	-14.88%
Dadeland South	1,143	1,259	-9.21%	1,685	-32.17%	982	16.40%	1,712	-33.24%
Douglas Road	809	827	-2.18%	2,210	-63.39%	814	-0.61%	820	-1.34%
Dr. Martin Luther King Jr.	385	382	0.79%	1,090	-64.68%	327	17.74%	404	-4.70%
Earlington Heights	524	465	12.69%	506	3.56%	413	26.88%	624	-16.03%
Government Center	1,864	1,756	6.15%	799	133.29%	1,597	16.72%	2,347	-20.58%
Hialeah	305	375	-18.67%	4,044	-92.46%	316	-3.48%	384	-20.57%
Miami International Airport	801	899	-10.90%	472	69.70%	667	20.09%	1,171	-31.60%
Northside	519	527	-1.52%	1,343	-61.36%	442	17.42%	567	-8.47%
Okeechobee	164	272	-39.71%	653	-74.89%	175	-6.29%	237	-30.80%
Overtown	643	433	48.50%	273	135.53%	511	25.83%	420	53.10%
Palmetto	219	217	0.92%	544	-59.74%	184	19.02%	218	0.46%
Santa Clara	251	288	-12.85%	336	-25.30%	201	24.88%	220	14.09%
South Miami	622	650	-4.31%	280	122.14%	522	19.16%	774	-19.64%
Tri-Rail	318	345	-7.83%	987	-67.78%	253	25.69%	381	-16.54%
UHealth Jackson	490	571	-14.19%	528	-7.20%	461	6.29%	718	-31.75%
University	308	214	43.93%	608	-49.34%	288	6.94%	282	9.22%
Vizcaya	495	345	43.48%	524	-5.53%	414	19.57%	350	41.43%
TOTAL	14,069	14,181	-0.79%	22,701	-38.02%	11,788	19.35%	16736	-15.94%

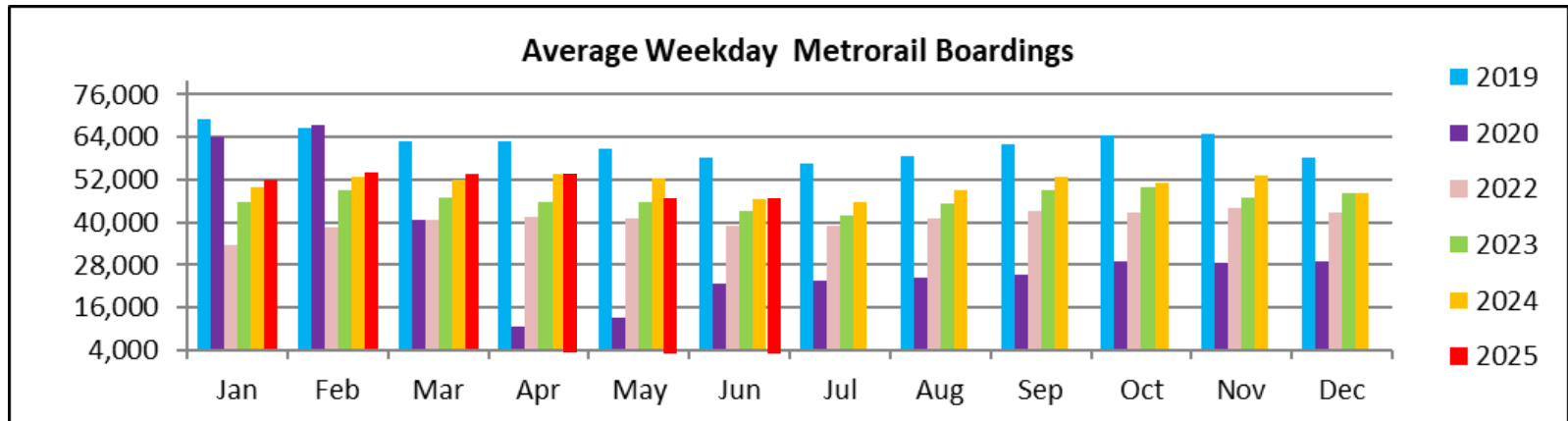
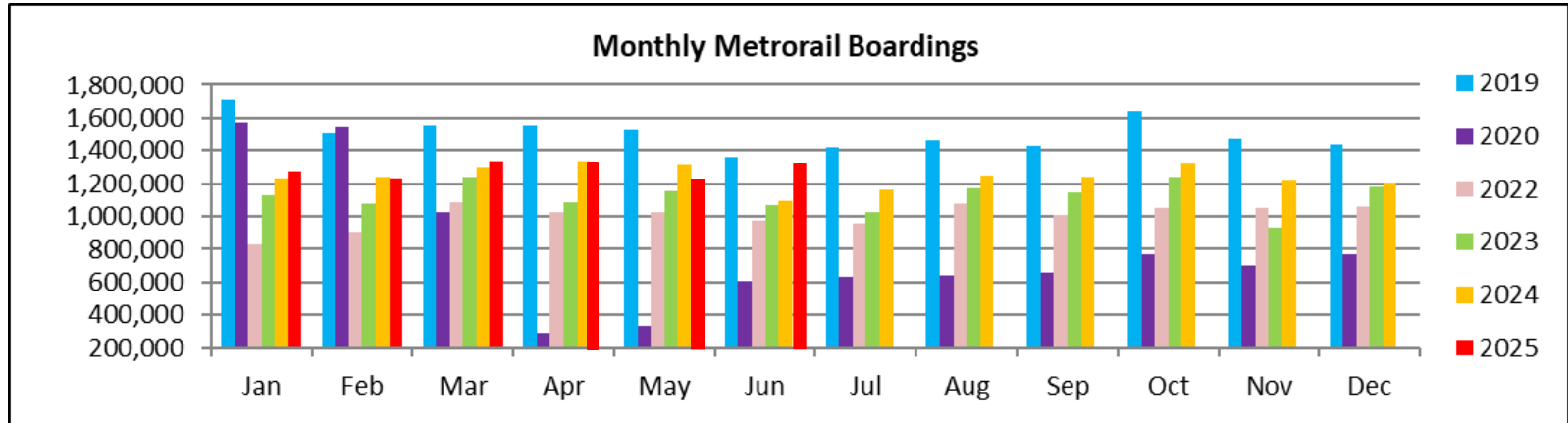
METRORAIL TOTAL MONTHLY BOARDINGS BY STATION

Monthly Totals	Total Month	Total Month	Percent Change	Total Month	Percent Change	Total Month	Percent Change	Total Month	Percent Change
STATIONS	June-25	June-24	YOY	Feb-20	Current vs Feb-20	May-25	MOM	June-19	YO6Y
Allapattah	38,343	38,702	-0.93%	46,868	-18.19%	42,854	-10.53%	42,011	-8.73%
Brickell	123,905	118,603	4.47%	152,259	-18.62%	137,374	-9.80%	136,028	-8.91%
Brownsville	11,687	13,967	-16.32%	21,285	-45.09%	13,580	-13.94%	19,447	-39.90%
Coconut Grove	32,210	40,826	-21.10%	128,921	-75.02%	6,198	419.68%	36,063	-10.68%
Culmer	11,369	20,227	-43.79%	43,580	-73.91%	13,063		27,757	-59.04%
Dadeland North	105,393	86,459	21.90%	33,497	214.63%	119,061	-11.48%	118,570	-11.11%
Dadeland South	96,938	100,692	-3.73%	132,894	-27.06%	109,241	-11.26%	147,123	-34.11%
Douglas Road	68,277	67,744	0.79%	162,416	-57.96%	90,913	-24.90%	71,998	-5.17%
Dr. Martin Luther King Jr.	21,729	22,160	-1.94%	82,141	-73.55%	24,055	-9.67%	25,881	-16.04%
Earlington Heights	31,892	28,003	13.89%	27,980	13.98%	35,226	-9.46%	35,780	-10.87%
Government Center	155,283	137,407	13.01%	40,697	281.56%	171,614	-9.52%	209,101	-25.74%
Hialeah	23,989	28,524	-15.90%	243,414	-90.14%	30,280	-20.78%	28,221	-15.00%
Miami International Airport	32,393	36,573	-11.43%	29,516	9.75%	34,870	-7.10%	41,541	-22.02%
Northside	29,927	31,133	-3.87%	46,115	-35.10%	33,094	-9.57%	32,422	-7.70%
Okeechobee	17,478	22,781	-23.28%	36,127	-51.62%	22,451	-22.15%	25,111	-30.40%
Overtown	52,285	39,329	32.94%	26,026	100.90%	55,213	-5.30%	46,162	13.26%
Palmetto	30,022	27,046	11.00%	49,911	-39.85%	33,185	-9.53%	30,018	0.01%
Santa Clara	18,789	17,848	5.27%	33,944	-44.65%	20,431	-8.04%	16,596	13.21%
South Miami	49,753	47,727	4.24%	19,245	158.52%	55,697	-10.67%	61,491	-19.09%
Tri-Rail	23,617	26,134	-9.63%	69,412	-65.98%	25,953	-9.00%	25,786	-8.41%
UHealth Jackson	92,454	92,087	0.40%	29,120	217.49%	107,734	-14.18%	118,318	-21.86%
University	32,246	21,915	47.14%	61,253	-47.36%	38,521	-16.29%	38,727	-16.74%
Vizcaya	33,144	26,173	26.63%	32,497	1.99%	40,073	-17.29%	25,814	28.40%
TOTAL	1,133,123	1,092,060	3.76%	1,549,118	-26.85%	1,260,681	-10.12%	1,359,966	-16.68%

METRORAIL CUMULATIVE PERCENTAGE RIDERSHIP SHARE



TOTAL MONTHLY AND AVERAGE WEEKDAY RIDERSHIP YEAR OVER YEAR COMPARISON CHARTS – METRORAIL



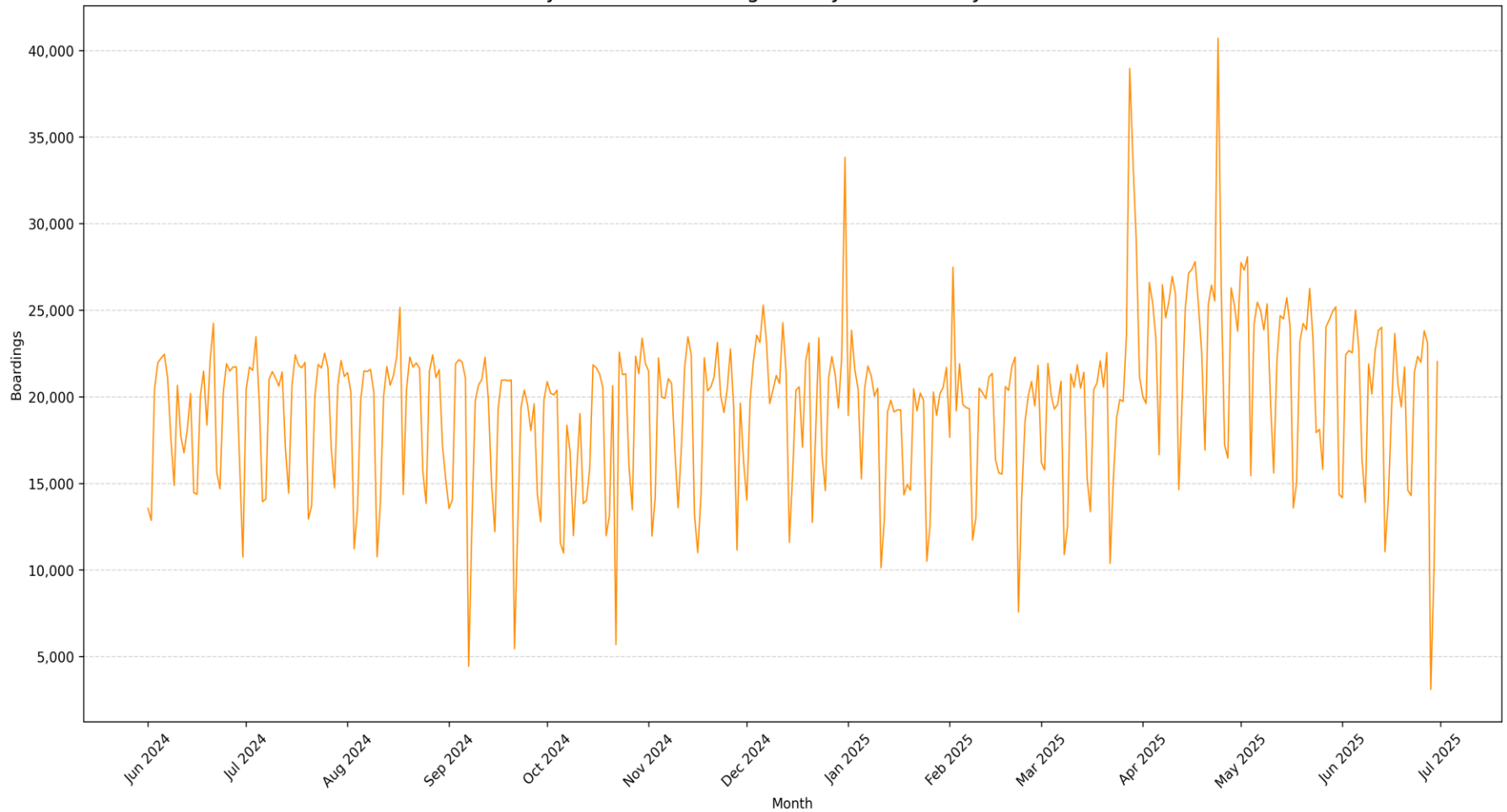
**“TOP 5 / BOTTOM 5” RAIL STATIONS AVERAGE WEEKDAY RIDERSHIP PERFORMANCE
YEAR OVER YEAR COMPARISONS**

Station	June-25	June24	Absolute Delta (1)	Percent Delta
DADELAND NORTH	4,496	3,878	618	16%
GOVERNMENT CENTER	6,427	5,909	518	9%
OVERTOWN	2,178	1,764	414	23%
UNIVERSITY	1,372	983	389	40%
VIZCAYA	1,331	1,100	231	21%
COCONUT GROVE	1,281	1,681	-400	-24%
CULMER	452	818	-366	-45%
DADELAND SOUTH	4,032	4,349	-317	-7%
UHEALTH JACKSON	4,163	4,405	-242	-5%
OKEECHOBEE	739	979	-240	-25%

(1) Averages rounded to the nearest boarding.

DAILY METRORAIL RIDERSHIP (12-Month Period)

Daily Metrorail Boardings from June 2024 to June 2025



METRORAIL PARKING PATRONAGE SUMMARY

June 2025

PARK-RIDE LOT	ACTUAL CAPACITY (1)	ACTUAL OCCUPANCY (2)	PERCENT OCCUPANCY
DADELAND SOUTH	1,138	669	59%
DADELAND NORTH	1,760	1,228	70%
SOUTH MIAMI	837	316	38%
UNIVERSITY	375	159	42%
DOUGLAS ROAD	190		
COCONUT GROVE	100		
VIZCAYA	90	53	59%
CULMER	40	19	46%
SANTA CLARA	61	38	62%
ALLAPATTAH	74	7	9%
EARLINGTON HEIGHTS	361	157	44%
BROWNSVILLE	100	76	76%
DR. MARTIN LUTHER KING JR. (MDT)	62		
DR. MARTIN LUTHER KING JR. (GARAGE)	631		
NORTHSIDE	126	83	66%
HIALEAH	238	77	32%
OKEECHOBEE	1,256	159	13%
PALMETTO	700	179	26%
TOTAL	8,139	3,221	40%

- (1) Number of spaces could vary each week; shown are available spaces during final week of month, as submitted by DTPW Safety & Security office.
- (2) All sampled occupancy data provided by DTPW Safety & Security office; calculations are revisions to those submitted by that entity.
- (3) Daily averages rounded to nearest unit, with fewer samples at some stations than others, depending on staffing levels; calculations are based on sampled counted days only per raw data submitted, with resulting average daily occupancy shown.

Metromover



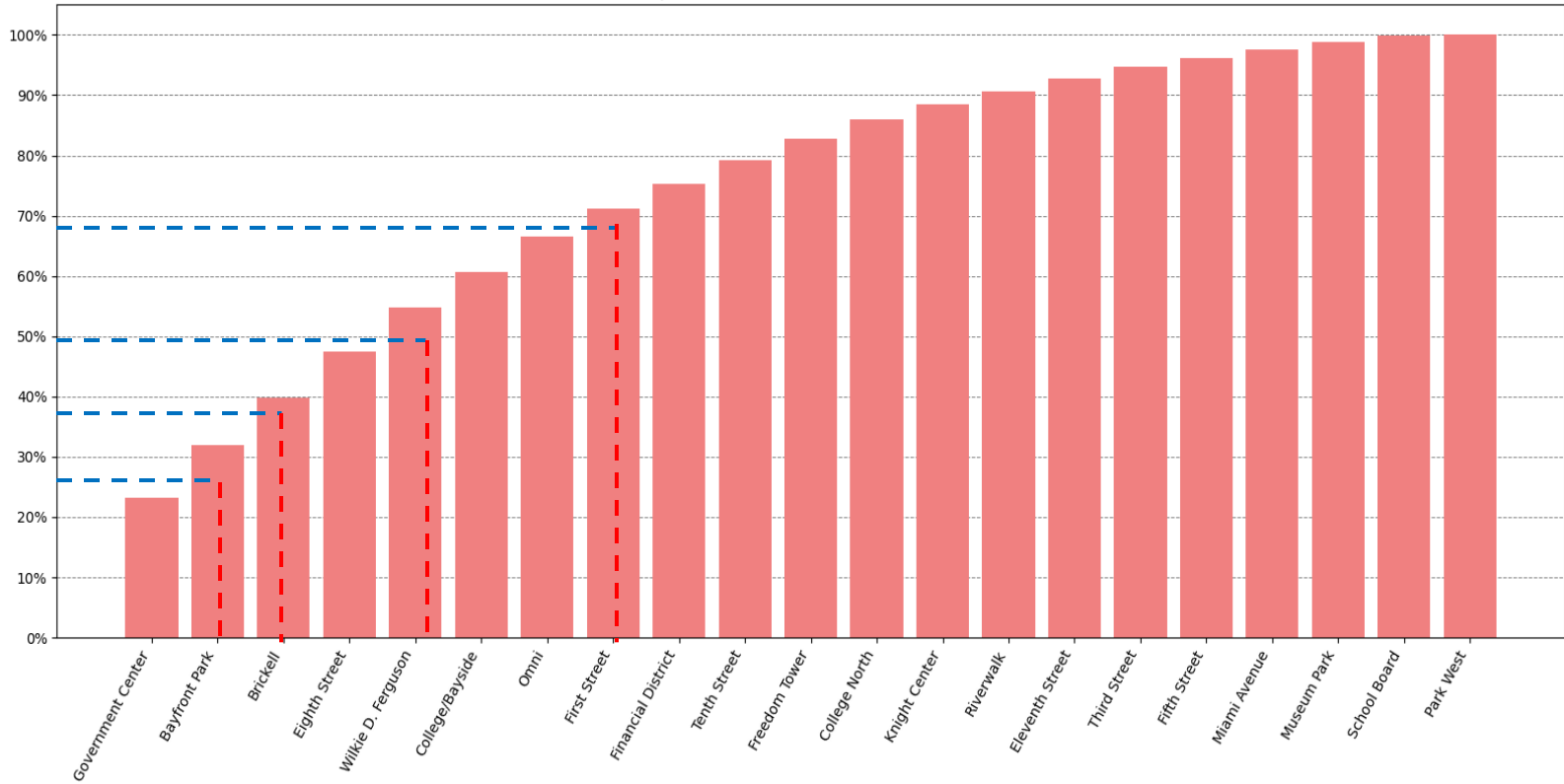
METROMOVER MONTHLY AND AVERAGE DAILY BOARDINGS BY STATION

	Average Weekday	Average Weekday	Percent Change	Average Saturday	Average Saturday	Percent Change	Average Sunday	Average Sunday	Percent Change	Total Monthly	Total Monthly	Percent Change
STATIONS	June-25	June-24	25 vs 24	June-25	June-24	25 vs 24	June-25	June-24	25 vs 24	June-25	June-24	25 vs 24
Bay Front	1,946	1,997	-2.6%	892	1,372	-35.0%	920	1,258	-26.9%	50,570	52,749	-4.1%
Brickell	1,743	2,124	-17.9%	620	1,243	-50.1%	870	1,191	-26.9%	43,526	54,333	-19.9%
College North	715	841	-15.0%	345	518	-33.4%	392	410	-4.5%	19,193	21,385	-10.3%
College Street-Bay S	1,346	1,310	2.7%	795	1,123	-29.2%	832	867	-4.1%	36,989	36,179	2.2%
Eighth Street	1,708	1,848	-7.6%	805	1,592	-49.4%	1,066	1,406	-24.2%	44,408	51,795	-14.3%
Eleventh Street	468	311	50.5%	279	224	24.6%	273	180	52.0%	12,579	8,236	52.7%
Fifth Street	335	570	-41.2%	145	398	-63.6%	157	334	-52.9%	8,413	14,941	-43.7%
Financial District	914	749	22.0%	301	381	-21.0%	369	324	13.7%	22,237	18,460	20.5%
First Street	1,044	1,118	-6.6%	585	910	-35.7%	627	858	-26.9%	28,291	30,974	-8.7%
Freedom Tower	792	761	4.1%	598	754	-20.7%	617	674	-8.5%	22,920	22,224	3.1%
Government Center	5,157	1,409	266%	2,082	1,096	90.0%	2,046	931	119.7%	130,118	38,210	240.5%
Knight Center	552	575	-4.0%	240	306	-21.6%	189	253	-25.2%	13,941	14,171	-1.6%
Miami	309	347	-11.0%	138	265	-47.9%	156	216	-27.8%	8,019	9,305	-13.8%
Museum Park	280	330	-15.2%	235	411	-42.8%	256	394	-35.0%	8,396	10,566	-20.5%
Omni	1,273	1,445	-11.9%	815	1,089	-25.2%	794	928	-14.5%	34,887	38,930	-10.4%
Park West	40	535	-92.5%	55	483	-88.6%	1	431	-99.8%	1,506	15,202	-90.1%
Riverwalk	481	599	-19.7%	198	381	-48.0%	257	384	-33.0%	12,203	15,674	-22.1%
School Board	222	1,195	-81.4%	103	929	-88.9%	129	784	-83.5%	5,877	32,458	-81.9%
Tenth Street	891	1,029	-13.4%	367	670	-45.2%	424	619	-31.5%	22,304	26,838	-16.9%
Third Street	422	352	19.9%	270	429	-37.1%	221	328	-32.6%	11,408	10,822	5.4%
Wilkie D Ferguson	1,616	1,428	13.2%	640	906	-29.4%	667	740	-9.8%	41,050	36,461	12.6%
TOTAL	22,254	20,873	6.6%	10,508	15,480	-32.12%	11,263	13,509	-17%	578,835	559,913	3%

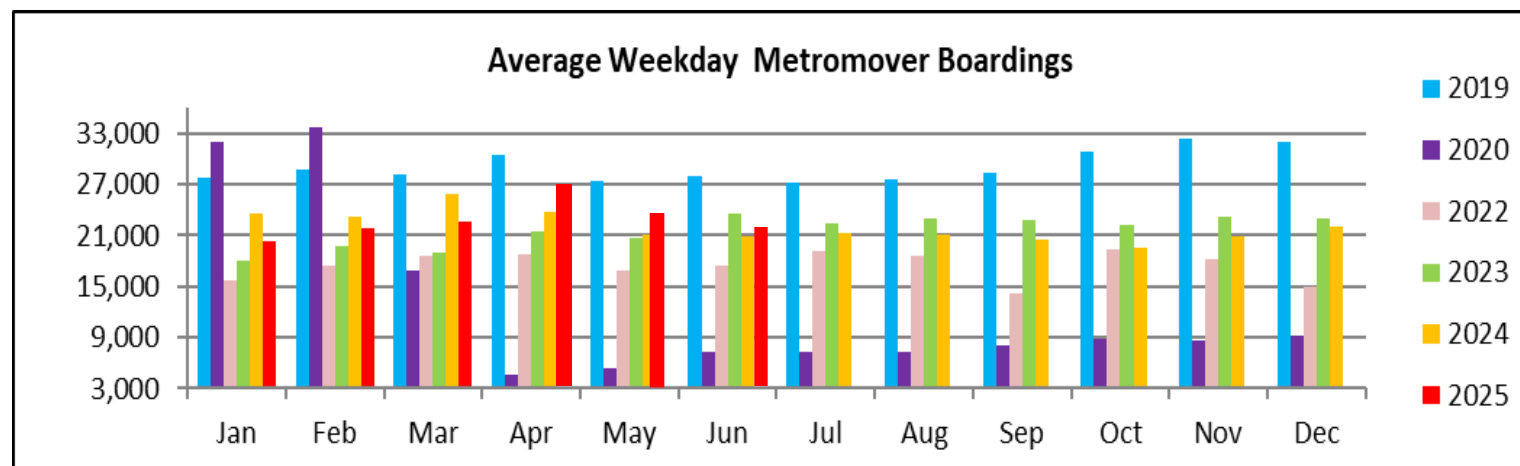
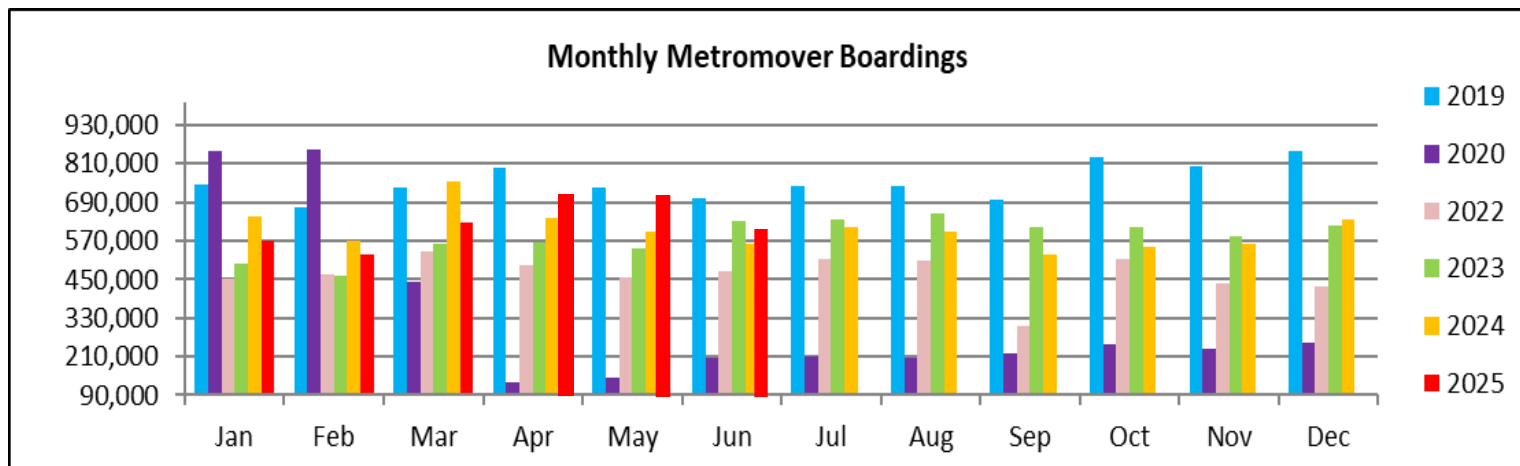
(*) Some Metromover stations were closed for construction during the CY 2023-2025 period, due to construction work; associated were numerous power and data outages, including on weekends.

METROMOVER CUMULATIVE PERCENTAGE RIDERSHIP SHARE

Metromover - Cumulative Percentage Average Weekday Ridership Share
Top 1/4, 1/3, 1/2 and 2/3 of stations



TOTAL MONTHLY AND AVERAGE WEEKDAY RIDERSHIP YEAR OVER YEAR COMPARISON CHARTS – METROMOVER



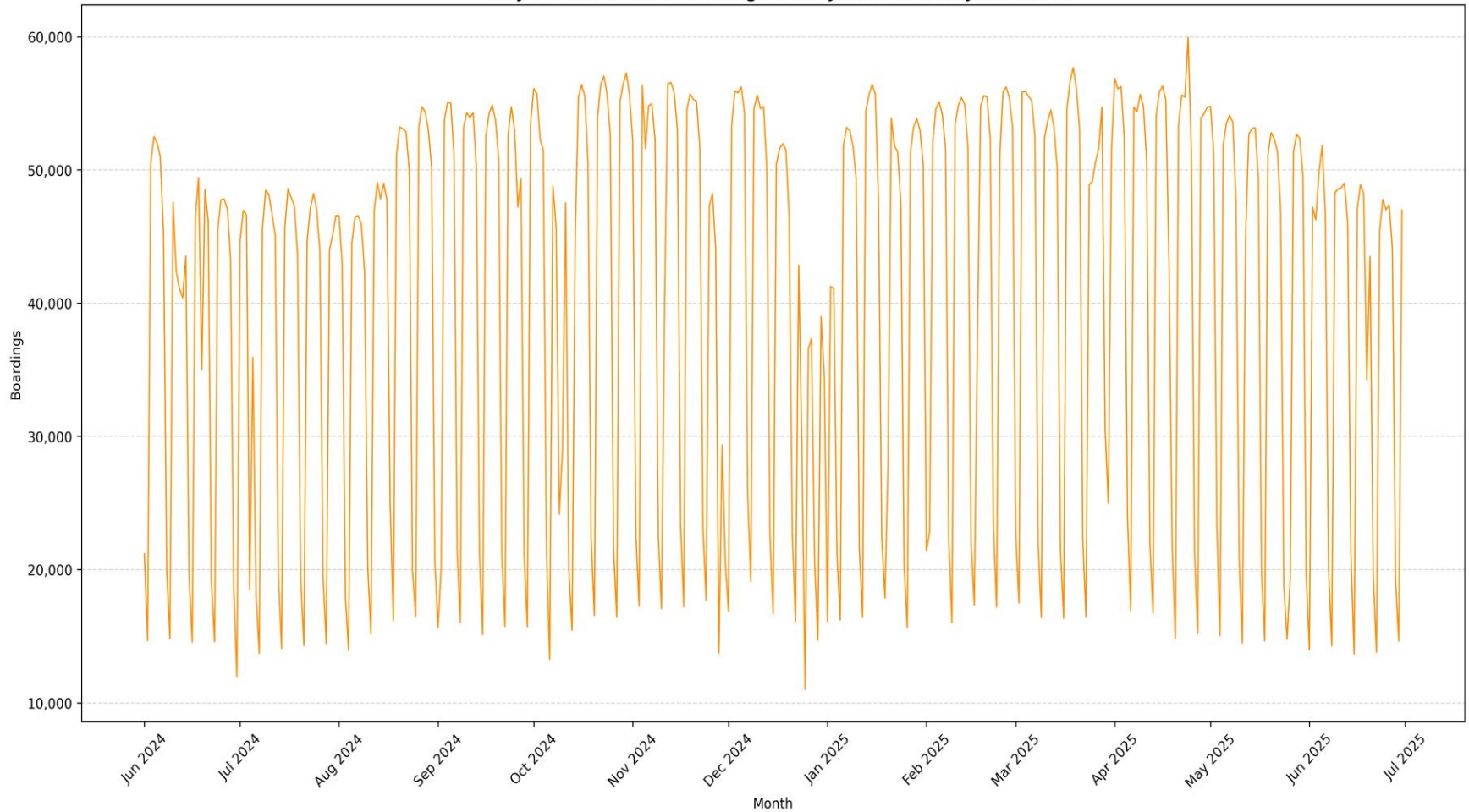
**“TOP 5 / BOTTOM 5” MOVER STATIONS AVERAGE WEEKDAY RIDERSHIP PERFORMANCE
YEAR OVER YEAR COMPARISONS**

Station	June-25	June-24	Absolute Delta (1)	Percent Delta
Government Center	5,157	1,409	3748	266.00%
Wilkie D Ferguson	1,616	1,428	188	13.17%
Financial District	914	749	165	22.03%
Eleventh Street	468	311	157	50.48%
Third Street	422	352	70	19.89%
School Board	222	1,195	-973	-81.42%
Park West	40	535	-495	-92.52%
Brickell	1,743	2,124	-381	-17.94%
Fifth Street	335	570	-235	-41.23%
Omni	1,273	1,445	-172	-11.90%

(1) Averages rounded to the nearest boarding.

DAILY METROMOVER RIDERSHIP (12-Month Period)

Daily Metromover Boardings from June 2024 to June 2025



Special Transportation Services

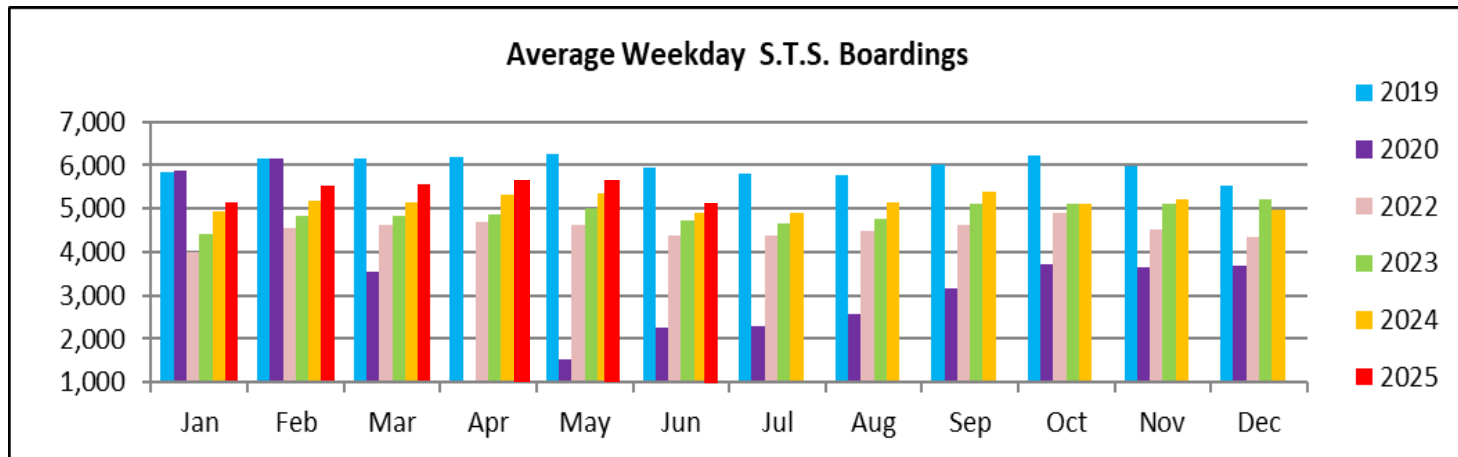
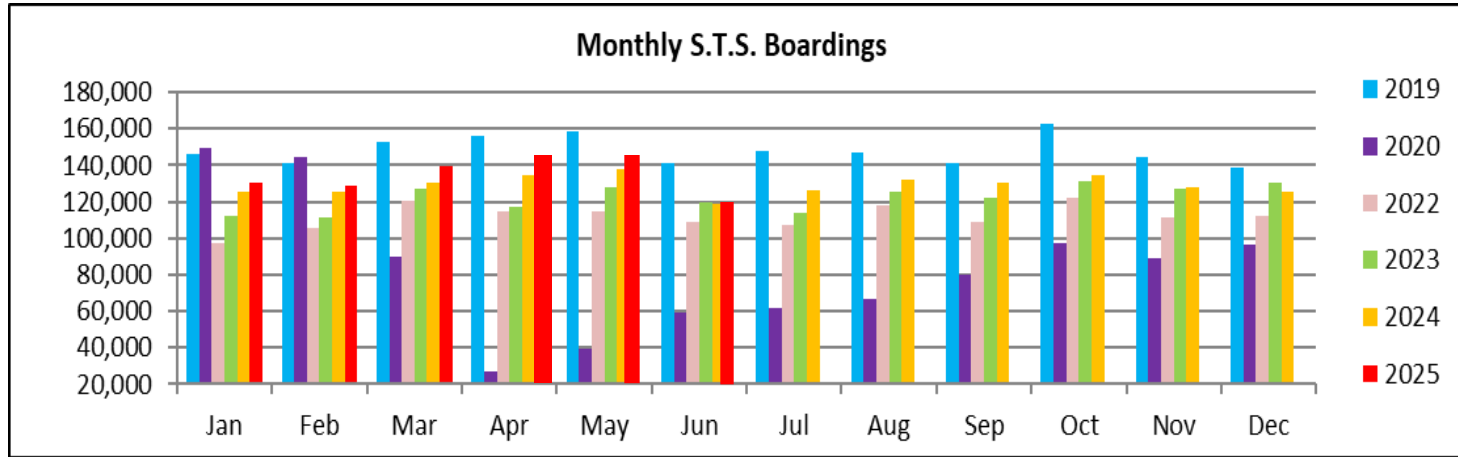


STS MONTHLY AND AVERAGE DAILY BOARDINGS June 2025

Measure	timeline	Ambulatory	Wheelchair	Total Clients (*)
Average Weekday	25-June	4,337	908	5,245
Average Saturday	25-June	2,099	406	2,505
Average Sunday	25-June	1,792	374	2,166
Total Monthly	25-June	108,425	22,566	130,991
Average Weekday	24-June	4,101	796	4,897
Average Saturday	24-June	1,915	373	2,288
Average Sunday	24-June	1,575	324	1,899
Total Monthly	24-June	99,462	19,398	118,860
Average Weekday	23-June	3,927	803	4,730
Average Saturday	23-June	1,724	373	2,097
Average Sunday	23-June	1,452	320	1,772
Total Monthly	23-June	99,091	20,436	119,527
% Change Current vs. June 2024 Weekday		5.75%	14.07%	7.11%
% Change Current vs. June 2024 Saturday		9.61%	8.85%	9.48%
% Change Current vs. June 2024 Sunday		13.78%	15.43%	14.06%
% Change Current vs. June 2024 Month Total		9.01%	16.33%	10.21%
% Change Current vs. June 2023 Weekday		10.44%	13.08%	10.89%
% Change Current vs. June 2023 Saturday		21.75%	8.85%	19.46%
% Change Current vs. June 2023 Sunday		23.42%	16.88%	22.23%
% Change Current vs. June 2023 Month Total		9.42%	10.42%	9.59%

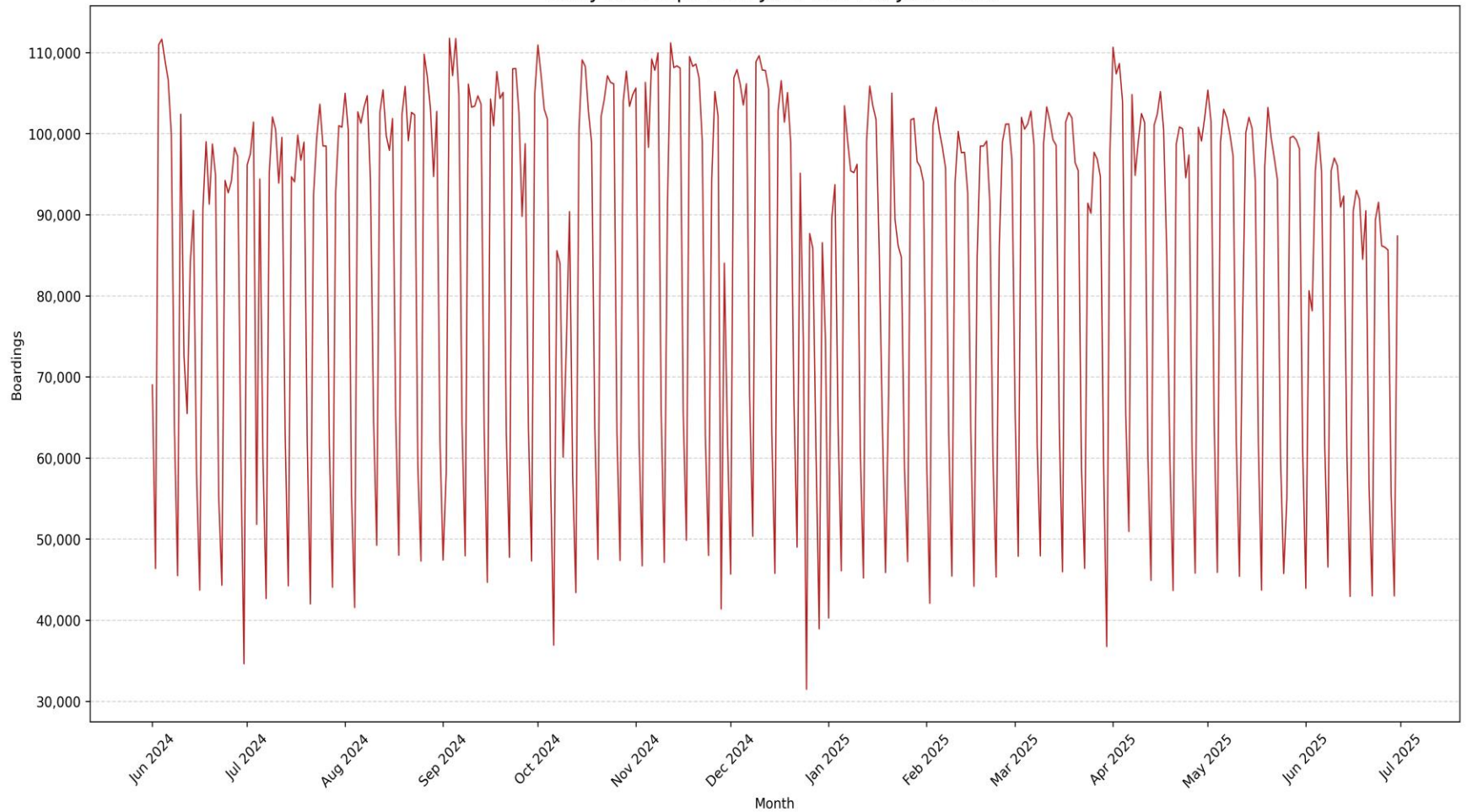
(*) Trip count data provided by STS contractor.

TOTAL MONTHLY AND AVERAGE WEEKDAY RIDERSHIP YEAR OVER YEAR COMPARISON CHARTS – SPECIAL TRANSPORTATION SERVICES (S.T.S.)

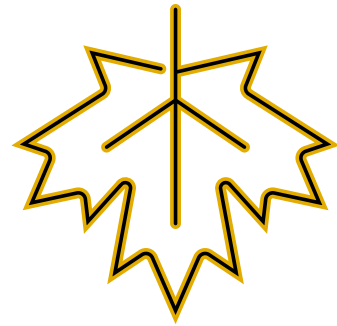
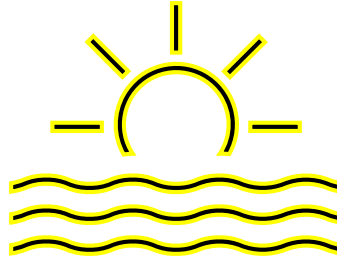
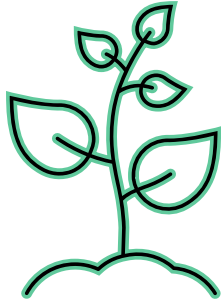


DAILY STS RIDERSHIP

Daily STS Trips from June 2024 to June 2025

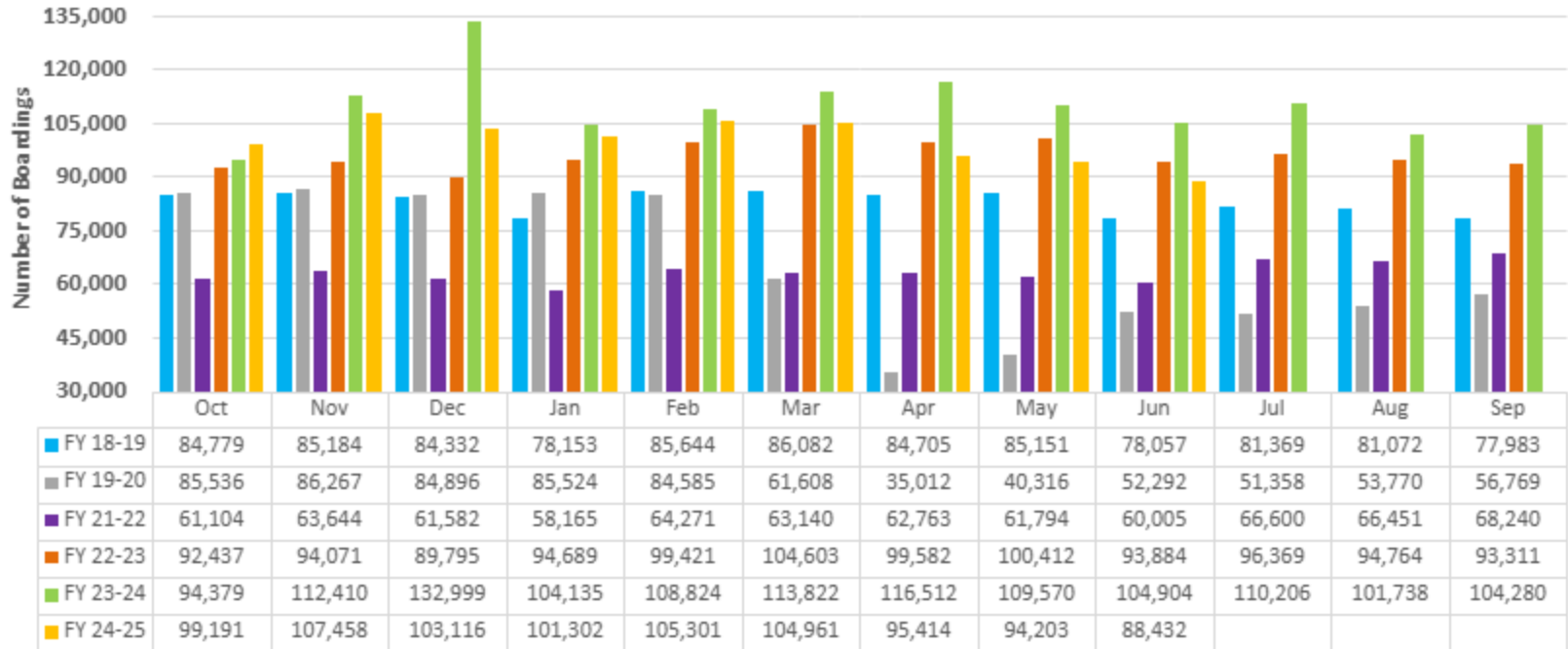


Ridership Seasonality



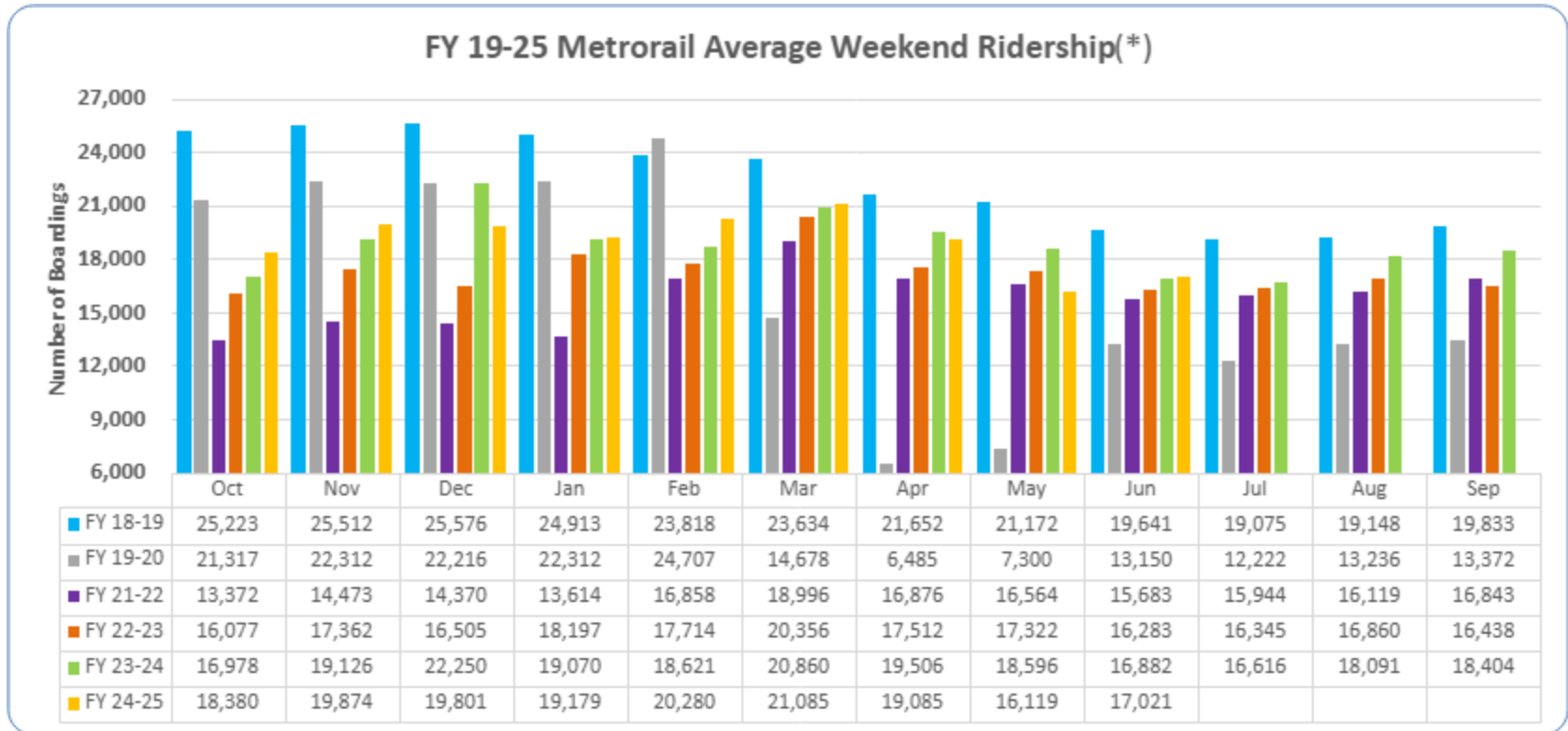
RIDERSHIP SEASONALITY – AVERAGE WEEKEND RIDERSHIP BY MONTH AND FISCAL YEAR FOR METROBUS

FY 19-25 Metrobus Average Weekend Ridership(*)



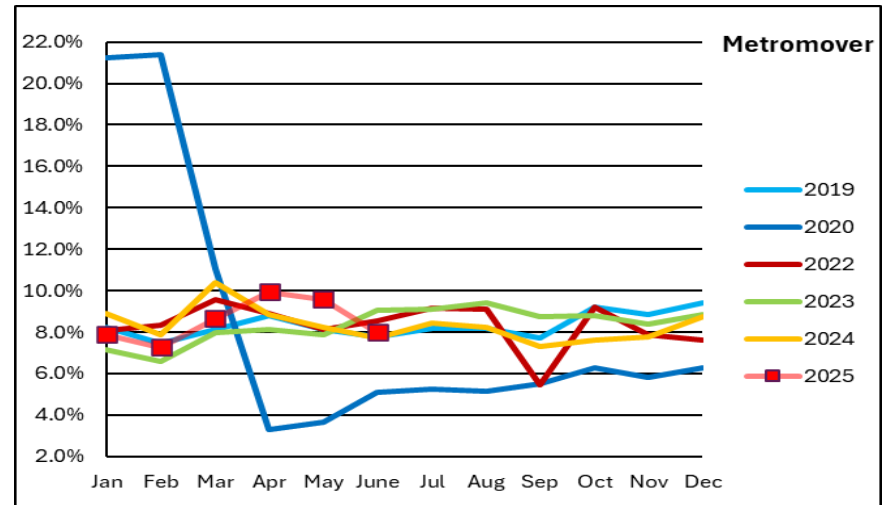
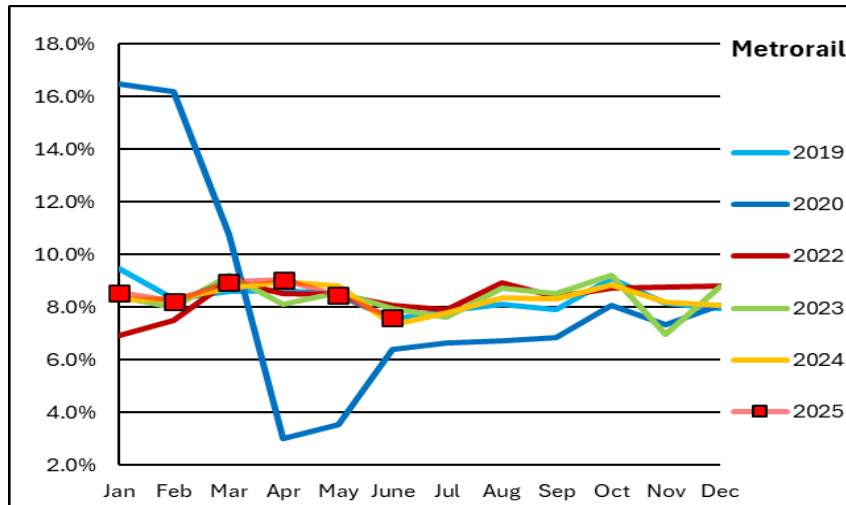
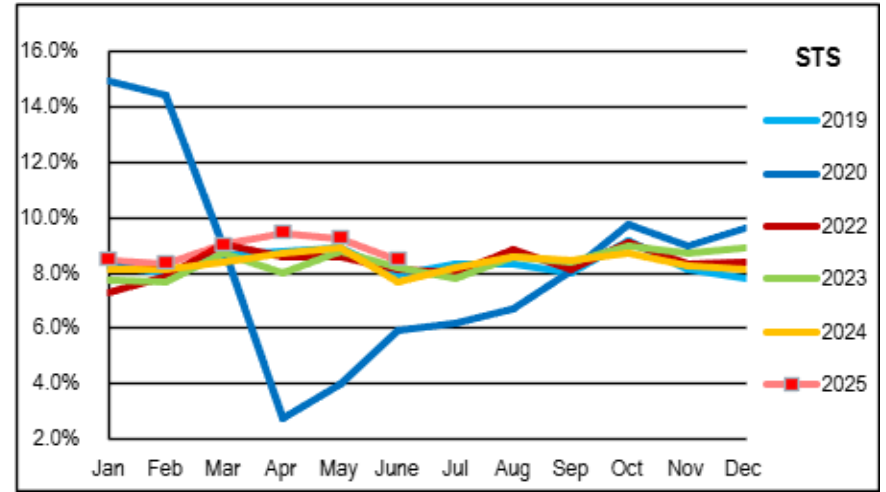
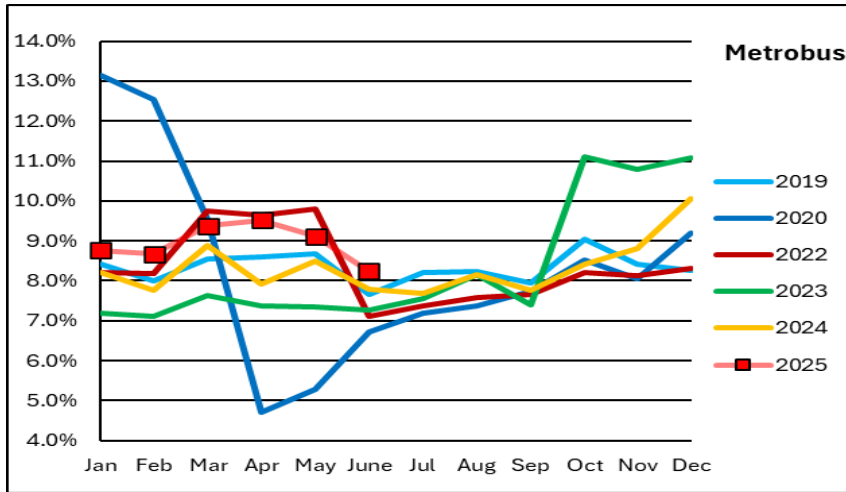
(*) Note: here, average weekend ridership for each month is defined as the average of average Saturday and average Sunday ridership; the pronounced increase beginning Nov-23 can be attributed to the launch of the Better Bus Network and the attendant free fares, which ended on New Year's Day 2024; the large jump from FY 21-22 to FY 22-23 can be largely attributed to the 10/01/22 switchover from farebox to APC reporting.

RIDERSHIP SEASONALITY – AVERAGE WEEKEND RIDERSHIP BY MONTH AND FISCAL YEAR FOR METRORAIL



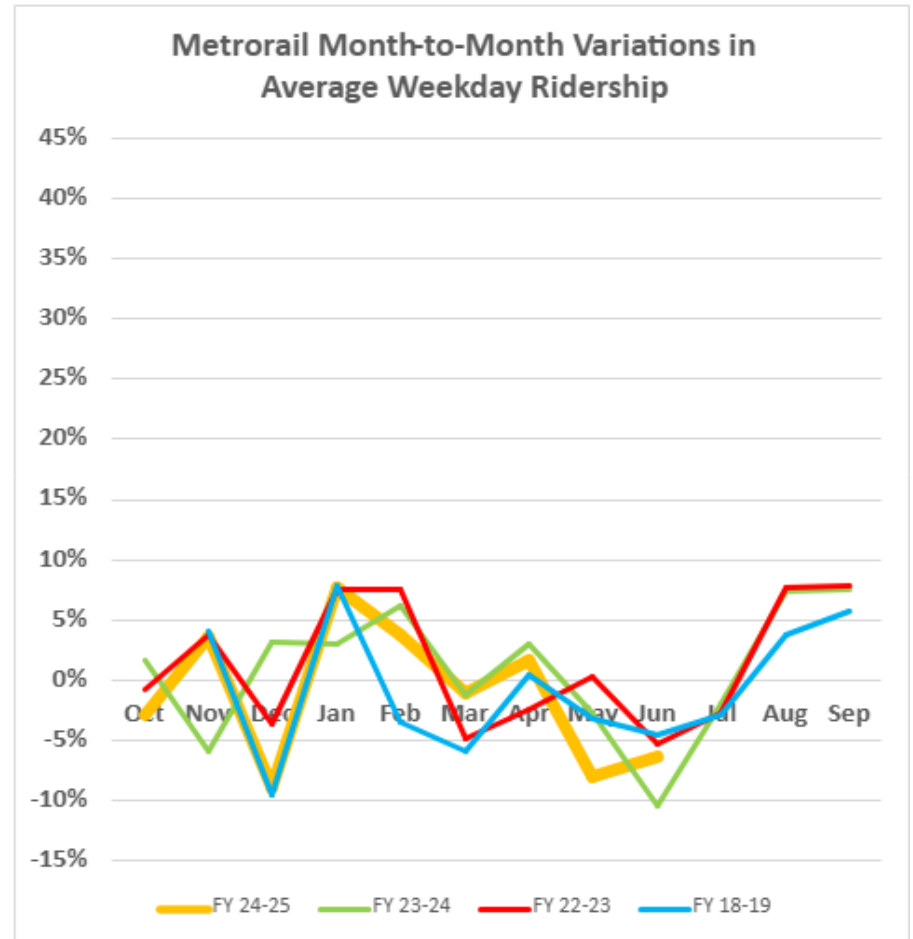
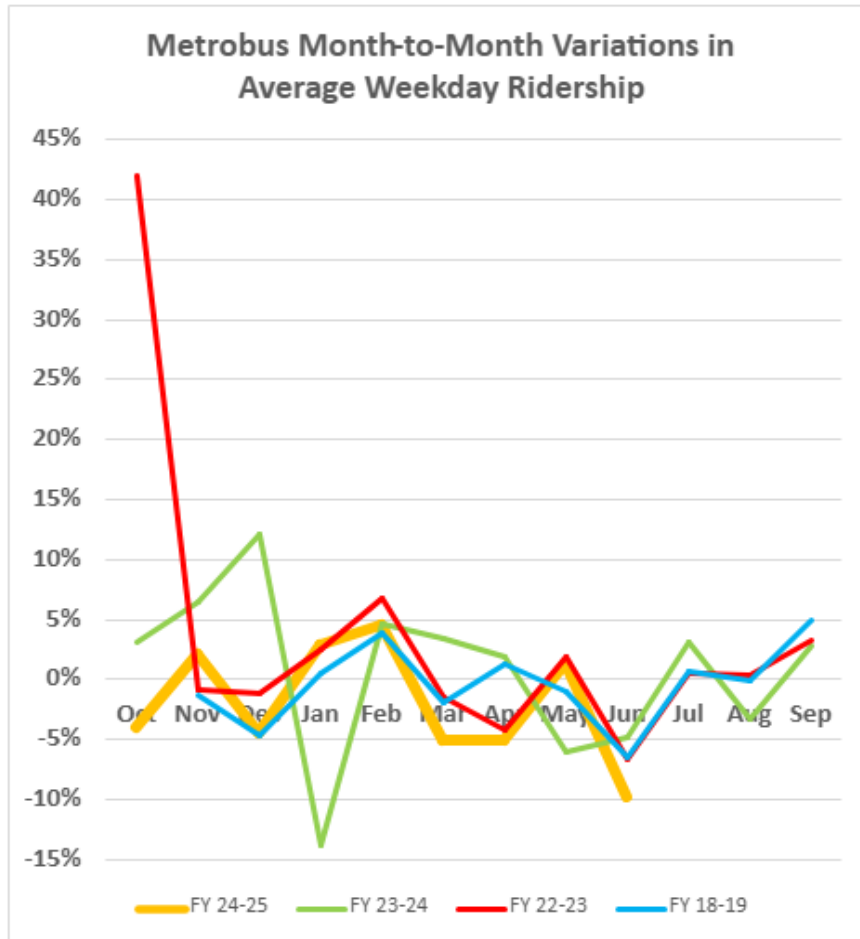
(*) Note: here, average weekend ridership for each month is defined as the average of average Saturday and average Sunday ridership; the pronounced increase beginning Nov-23 can be attributed to the launch of the Better Bus Network and the attendant free fares, which ended on New Year's Day 2024.

RIDERSHIP SEASONALITY – PERCENT SHARE OF TOTAL RIDERSHIP BY MONTH AND CALENDAR YEAR FOR EACH MODE



Note: the prominent dip seen in the beginning in the spring of 2020 is due to the SARS-CoV-2 pandemic. The sharp increase in Metrobus percentage share beginning October 2022 is due to the switchover from farebox to automatic passenger counter reporting. The pronounced rise beginning November 2023 for Metrobus and Metrorail can be attributed to the launch of the Better Bus Network and the attendant free fares, which ended on New Year's Day 2024.

RIDERSHIP VOLATILITY – MONTH-TO-MONTH AVERAGE WEEKDAY RIDERSHIP PERCENTAGE CHANGES FOR METROBUS AND METRORAIL



Note: The pronounced rise beginning Nov-23 for Metrobus and Metrorail can be attributed to the launch of the Better Bus Network and the attendant free fares, which ended on New Year's Day 2024, leading to the subsequent pronounced dip. For Metrobus, the very high peak at the start of FY 22-23 is due to the switchover from farebox to automatic passenger counter ridership reporting at the very beginning of that fiscal year (10/01/22).