



# BUILDING A BETTER BUS NETWORK

Join the Conversation

Better  
Bus  
Network



MIAMI-DADE  
COUNTY

# AGENDA FOR TODAY

- Welcome & Introductions
- What is the Better Bus Network?
- How Did We Get Here?
- What are the Proposed Changes?
- Interactive Network Discussion
- Public Engagement 2021
- Wrap-up



Better  
Bus  
Network



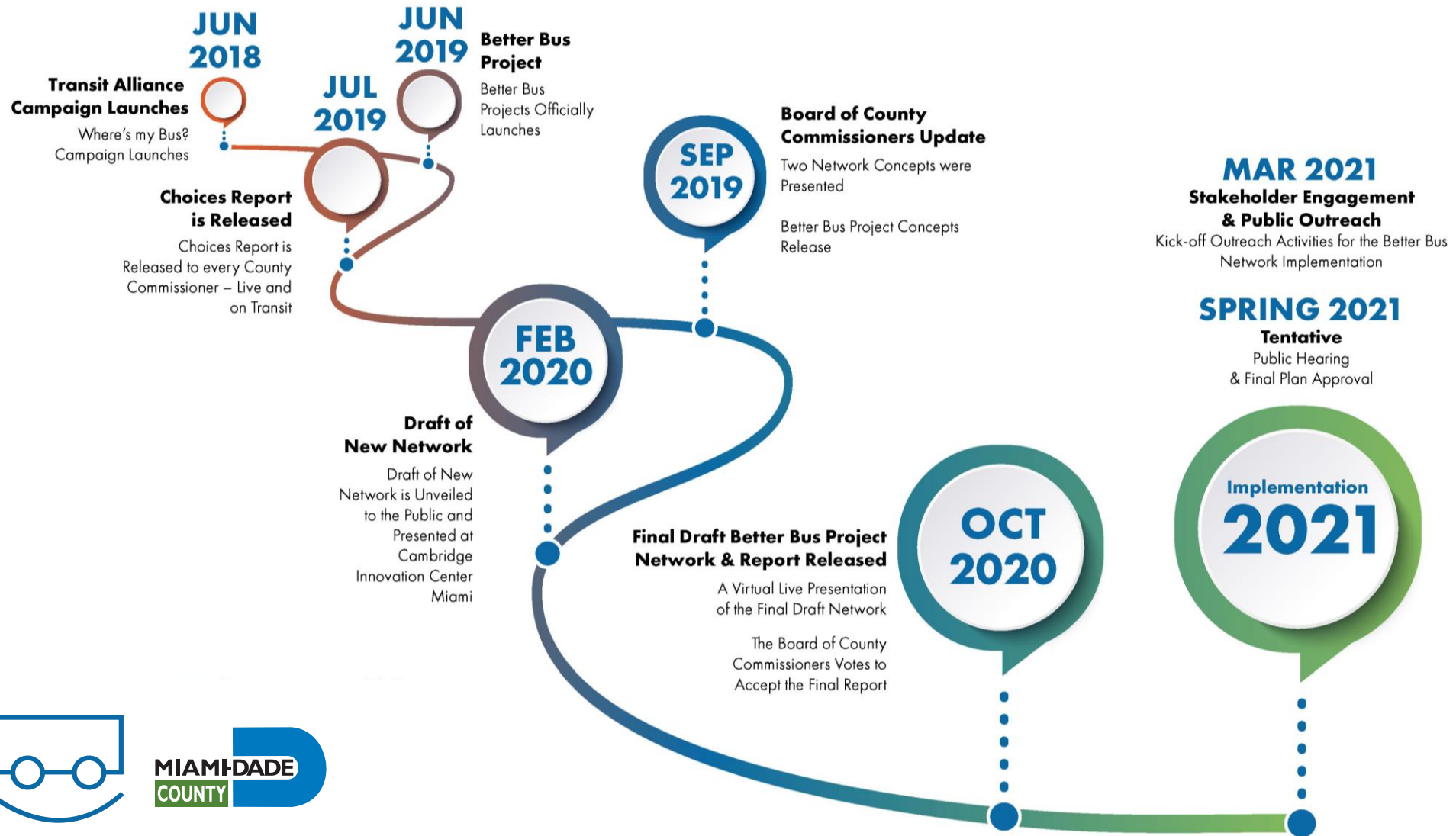
# WHAT IS THE BETTER BUS NETWORK?

*We're building a Better Bus Network!*

- Re-imagined bus network
- Collaborative community-driven effort since 2018
- Service neutral, using resources more efficiently
- Increased access to frequent bus routes
- Improved off-peak service
- Faster journeys



# HOW DID WE GET HERE?





# 2018-2020

- 5000+ Survey Responses
- 1,700+ Text Message Conversations
- 140 Workshops / Presentations that engaged 2,800+ people



## Desire for Change

**Should we change the bus system so more people can get to more places more quickly?**

**84% Agree**





## Preference for Ridership Goal

**Which network concept do you prefer?**

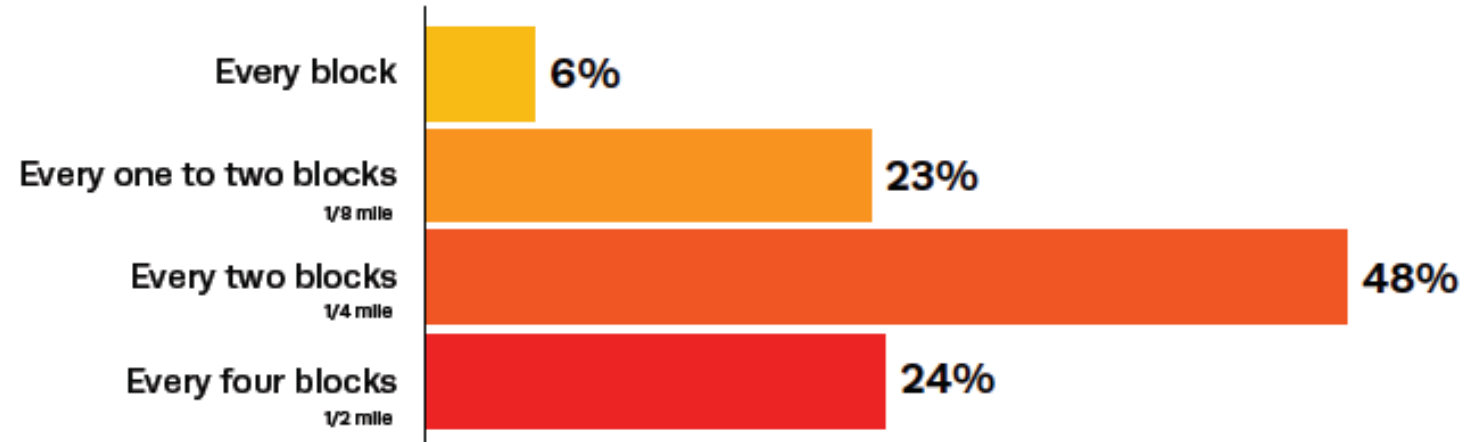
**59% Chose Ridership**



## Wider Stop Spacing

How far apart should bus stops be?

**72% say every two blocks or more**





Should we run more buses where we have the most bus riders in Miami-Dade County, and less service everywhere else?

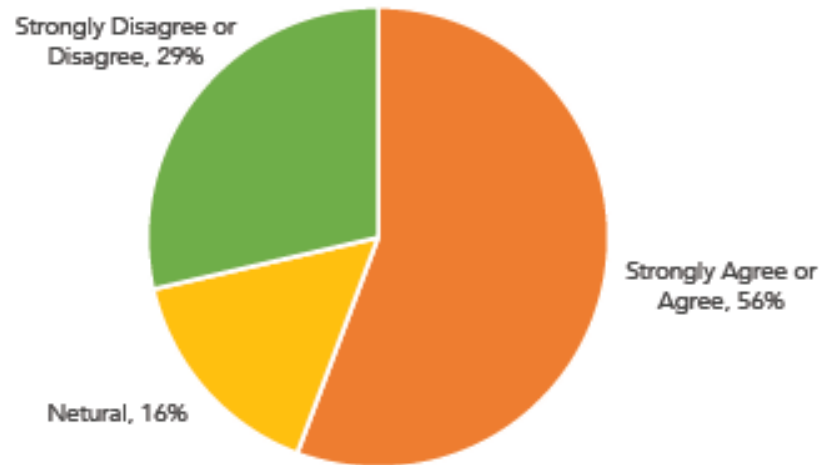


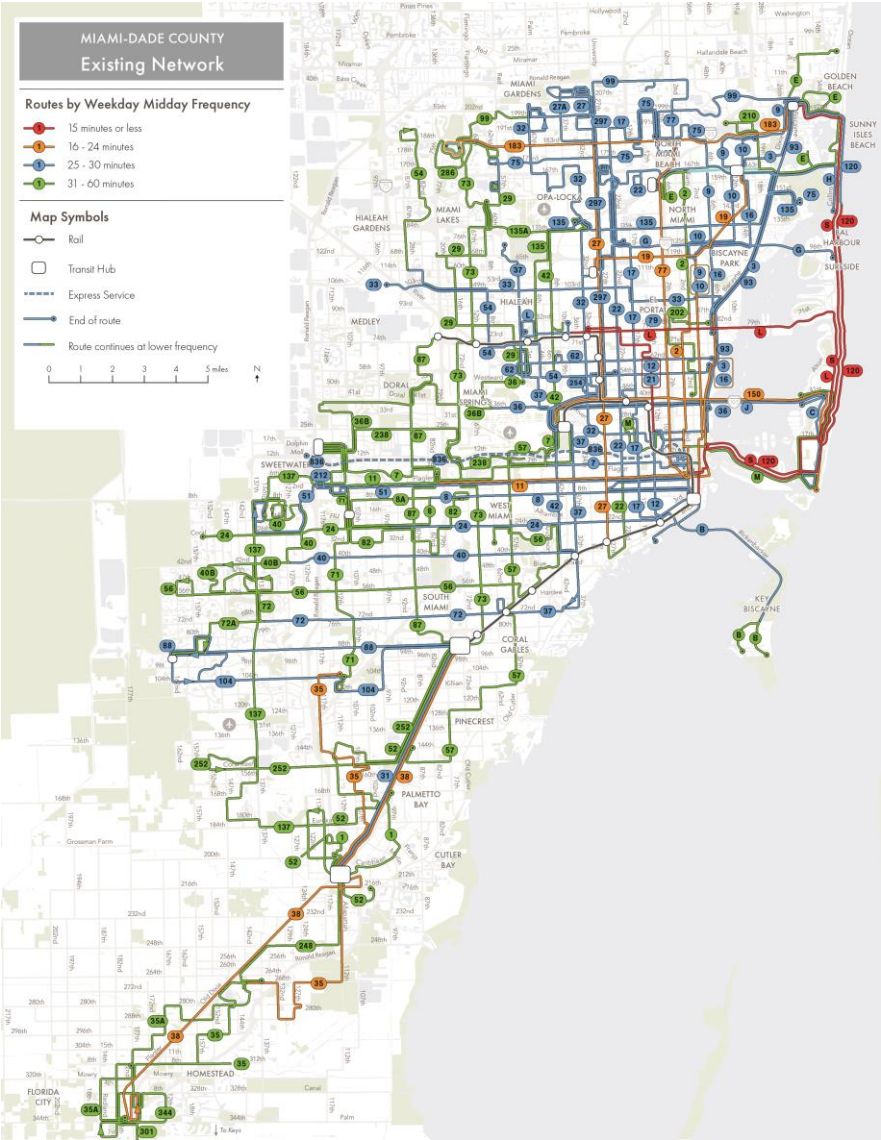
Figure 8: Responses to shifting resources to highest density areas

Most survey respondents said that Miami-Dade should run more buses in areas with the most bus riders—dense and busy places.

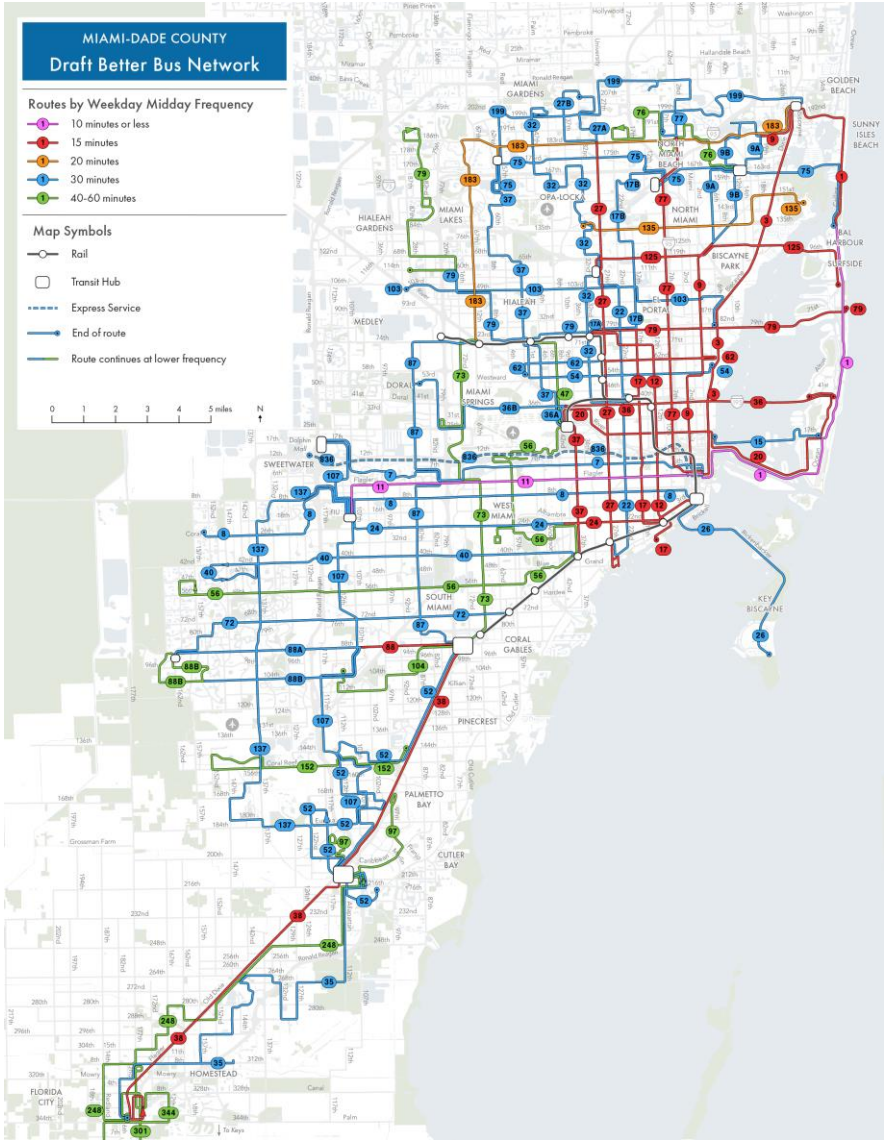
- *Most respondents favor shorter waits, even if it means longer walks—and these are usually the results of Ridership goals.*
- *Respondents were split over whether to shift resources away from low productivity routes towards high productivity routes, which is a method to achieving Ridership goals.*

# WHAT ARE THE CHANGES?

Existing Bus Network



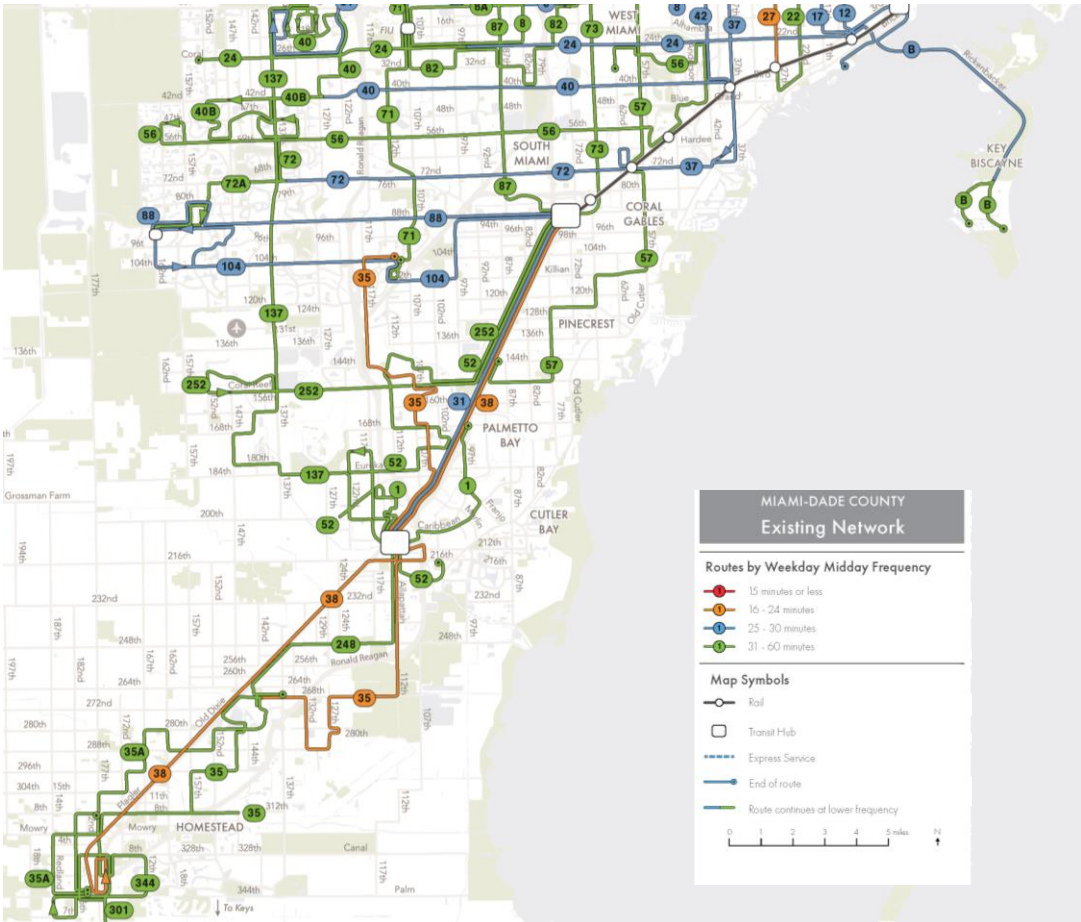
Proposed Better Bus Network



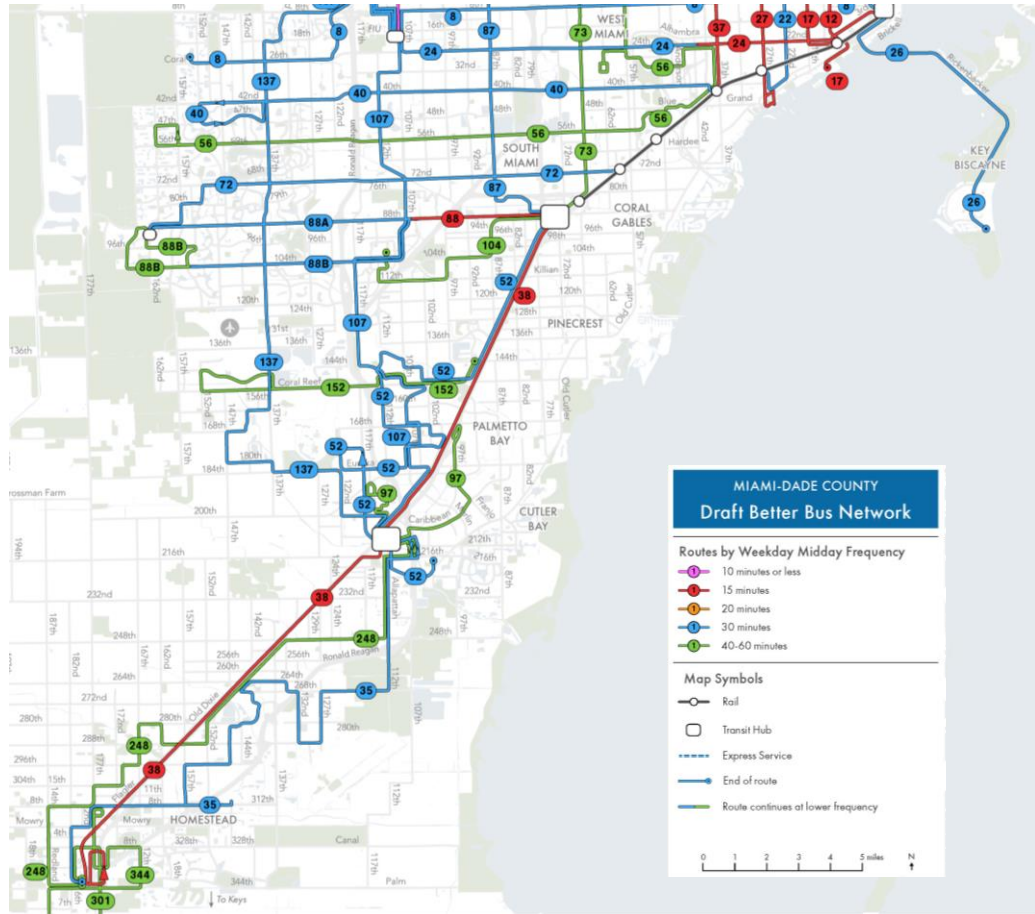


# WHAT ARE THE CHANGES IN SOUTH MIAMI-DADE COUNTY?

Existing Bus Network



Proposed Better Bus Network



# WHAT ARE THE IMPROVEMENTS?

- Connects residents to more opportunities
- Provides greater access to high-frequent routes
- Provides consistent high-frequent service
- Creates more equitable service
- Creates a more efficient system



# QUANTIFY THE BENEFITS



*Nearly 353,000 additional residents in Miami-Dade County will have access to a bus route that arrives every 15 minutes or less within a ¼ mile or a 5-minute walk or less.*

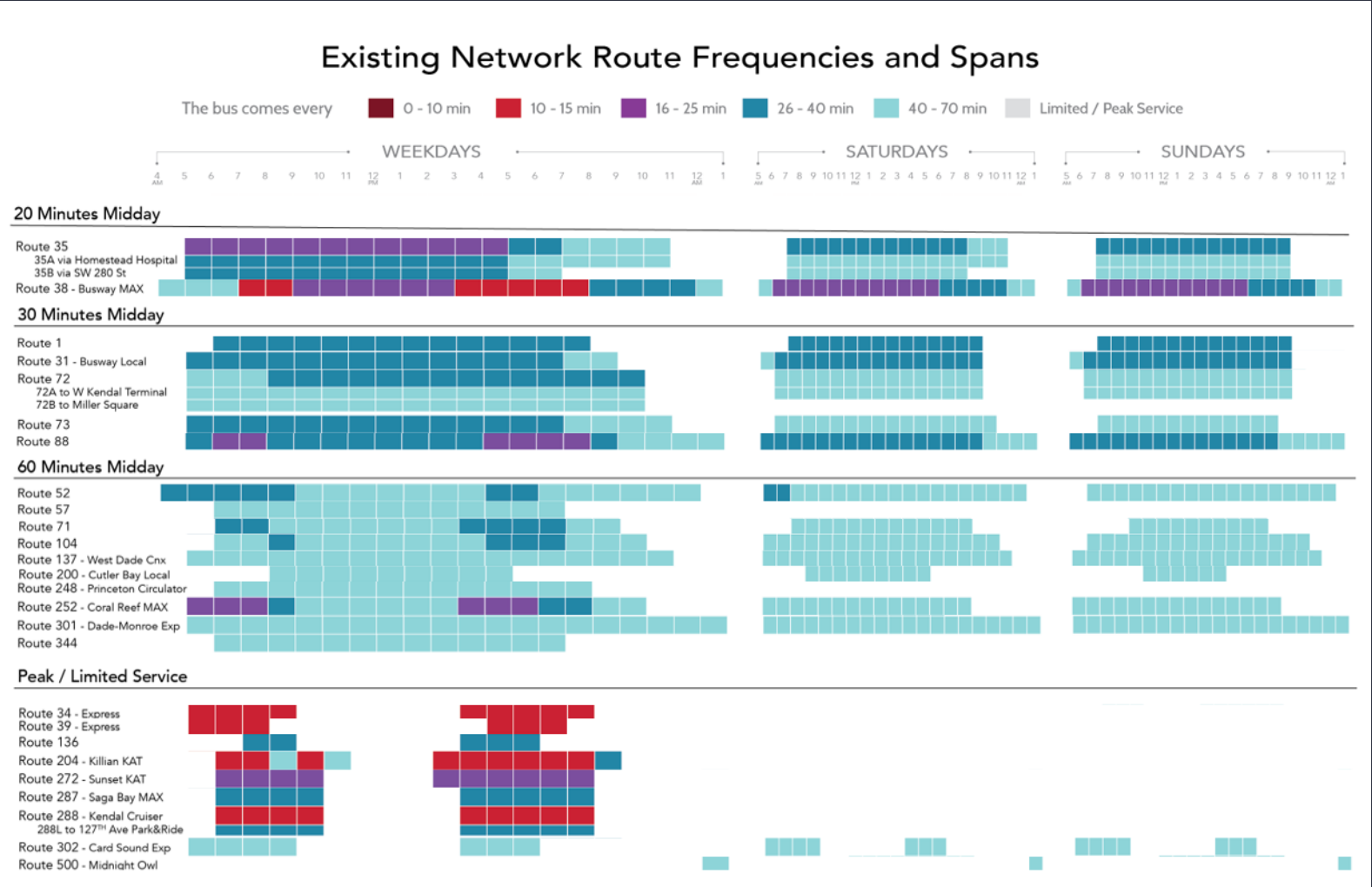


*The average resident in Miami-Dade County will have access to 31% more opportunities (jobs and services) in 60 minutes by walking and transit.*



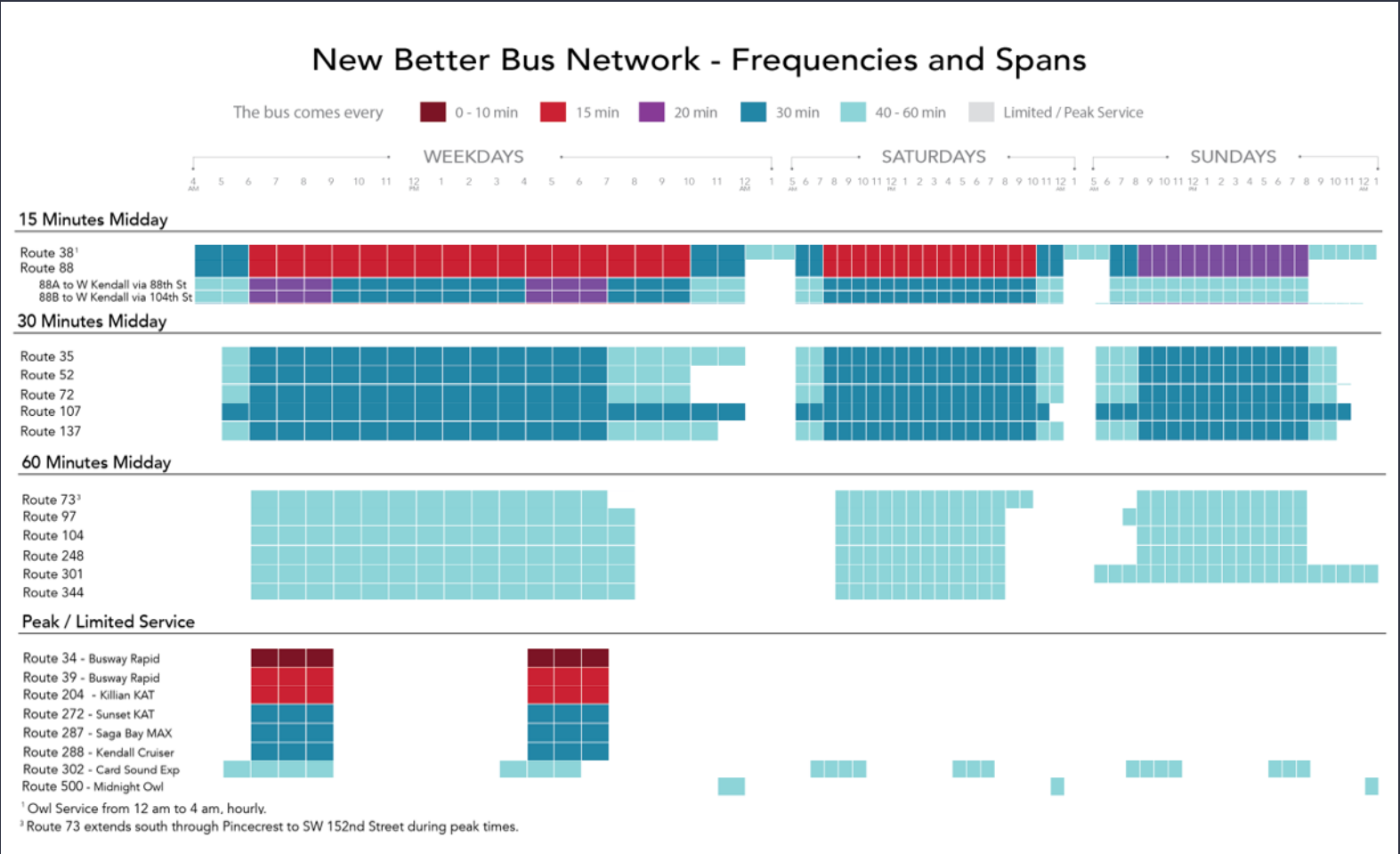
*Increase the percentage of jobs near frequent service from 20% to 36% , bringing frequent service closer to 175,000 additional jobs.*

# EXISTING FREQUENCIES & SPANS – SOUTH MIAMI-DADE COUNTY





# PROPOSED FREQUENCIES & SPANS – SOUTH MIAMI-DADE COUNTY



# TRADE OFFS



*2% more residents will have no access within ½ mile*



*Reductions in some peak frequencies*



*Longer walk to the bus stop for a faster journey*



# BUS STOP CONSOLIDATION

## Existing vs. Better Bus Stops (Mid-day Frequency)

Please click on a bus stop to view routes serving that specific stop and the route frequency.

### Note:

For bus stops that are "Under Review", the Miami-Dade Department of Transportation and Public Works is continuously evaluating the bus network to optimize service in response to customer needs. These are bus stops that may or may not be moved in the future, based on those and other factors.

### Legend

#### Existing Stops



#### Existing Routes

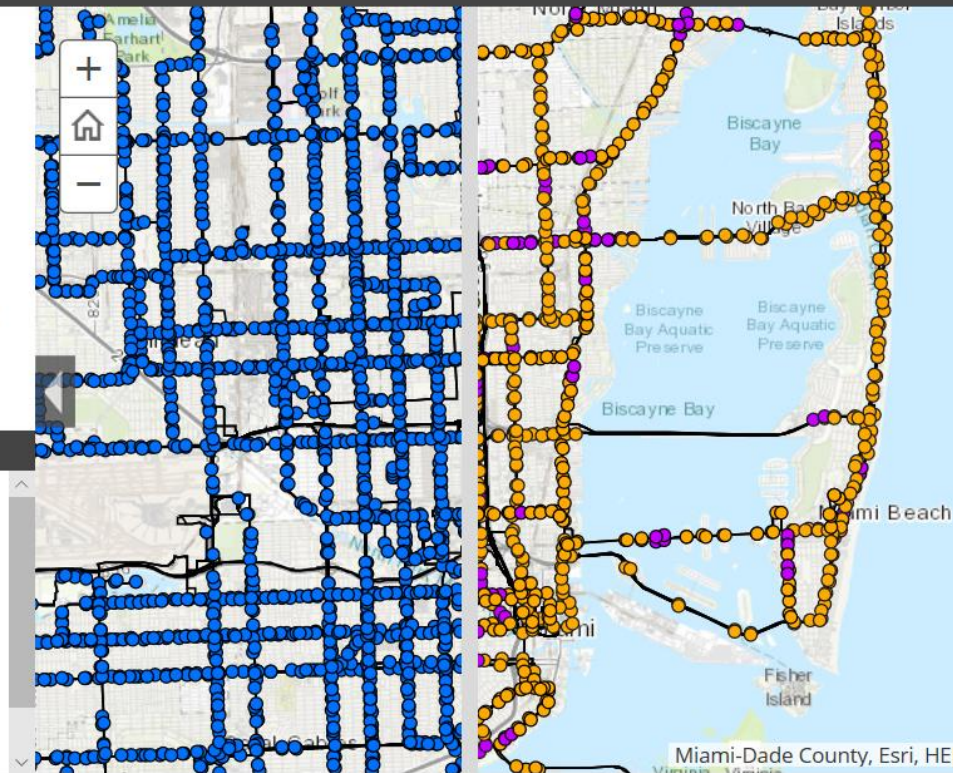


#### Better Bus Stops

Under Review

Better Bus Stops

Better Bus Routes

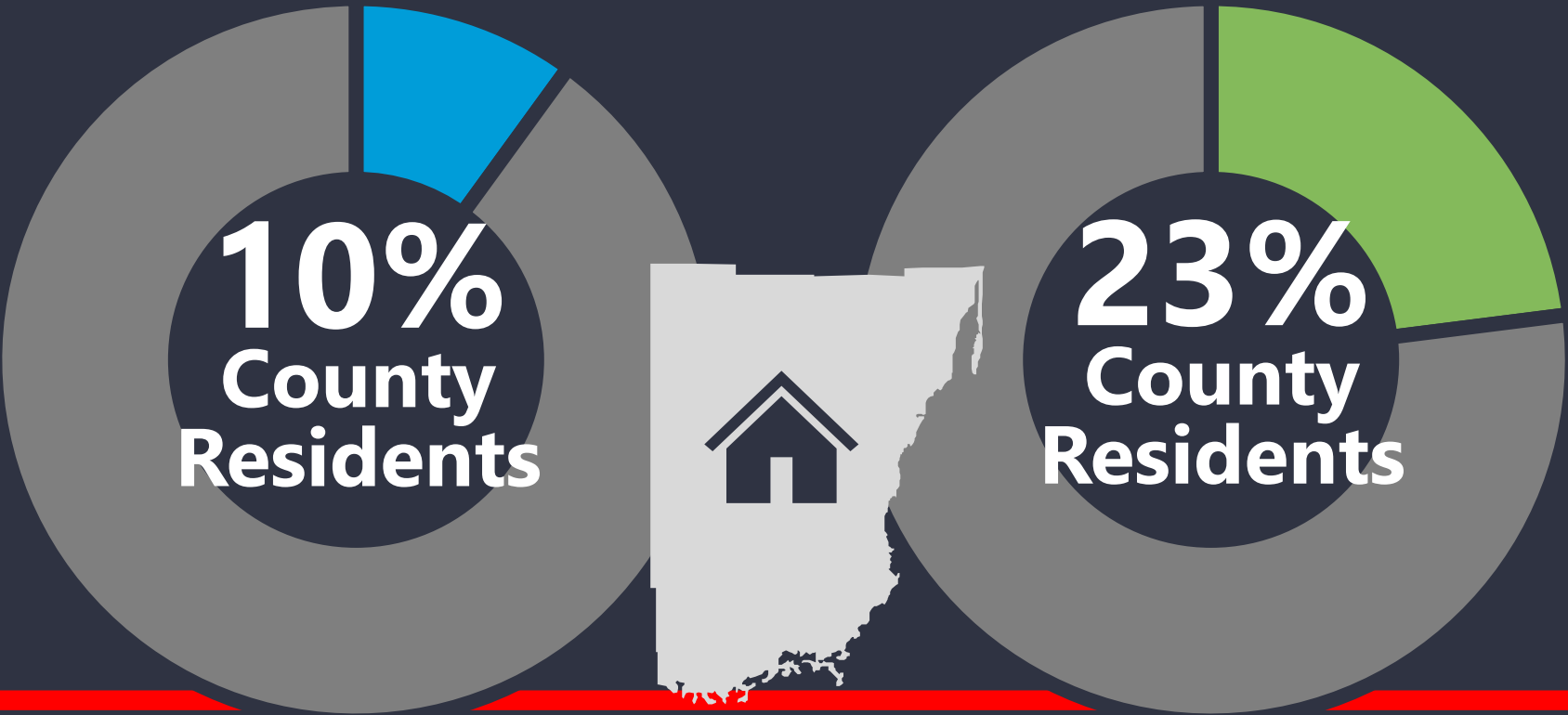


# WHO HAS ACCESS?

Every 15 minutes



# ACCESS TO HIGH-FREQUENT SERVICE



Existing

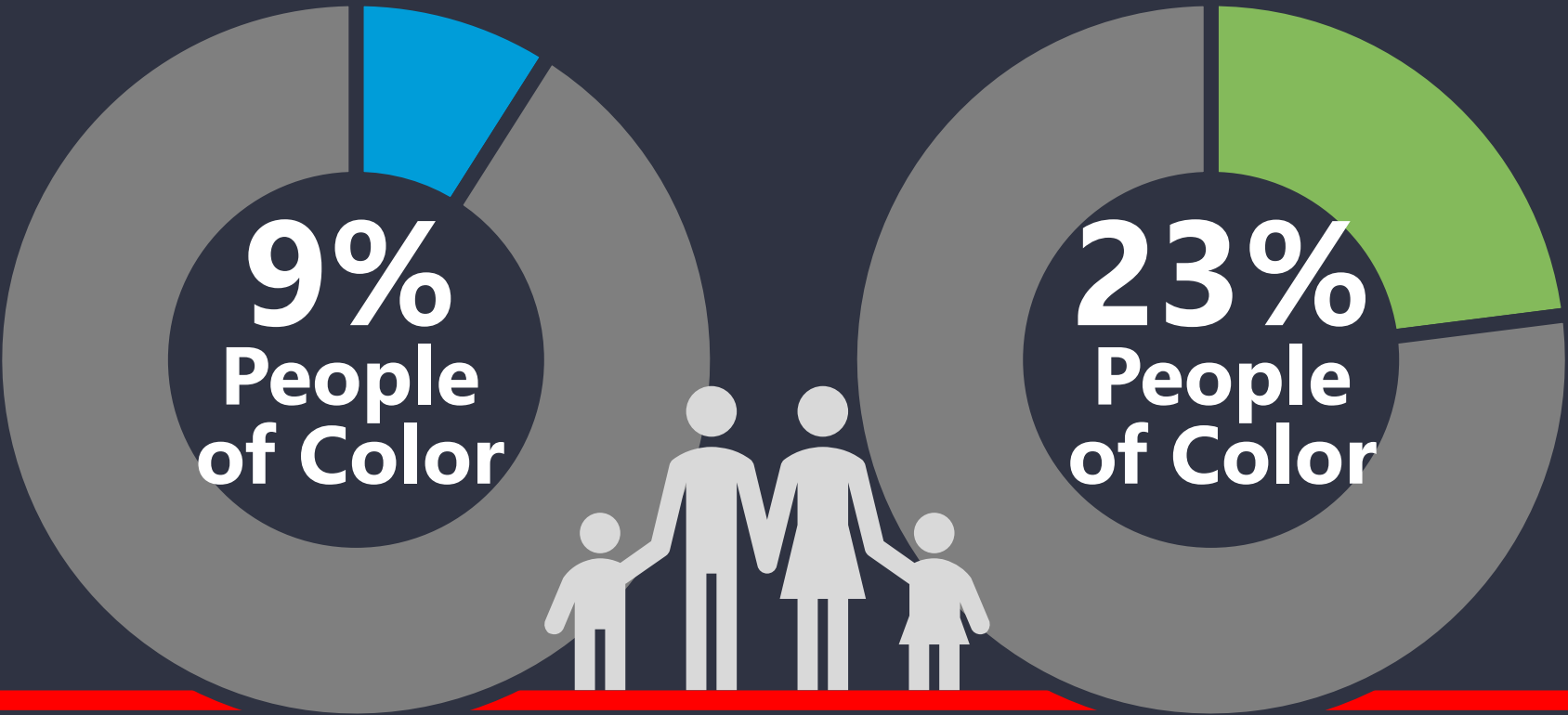
Proposed



5 minute  
walk



# ACCESS TO HIGH-FREQUENT SERVICE



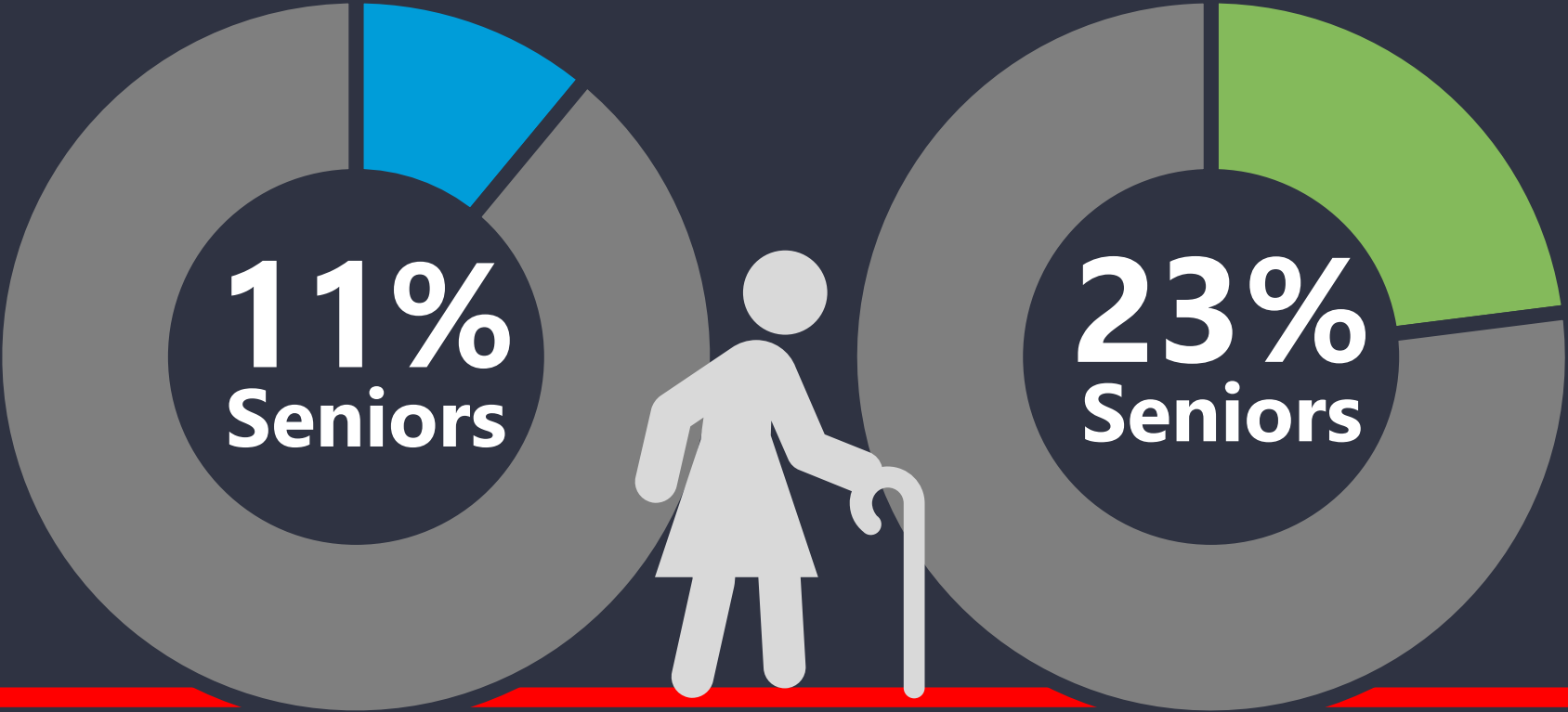
Existing

Proposed



5 minute walk

# ACCESS TO HIGH-FREQUENT SERVICE



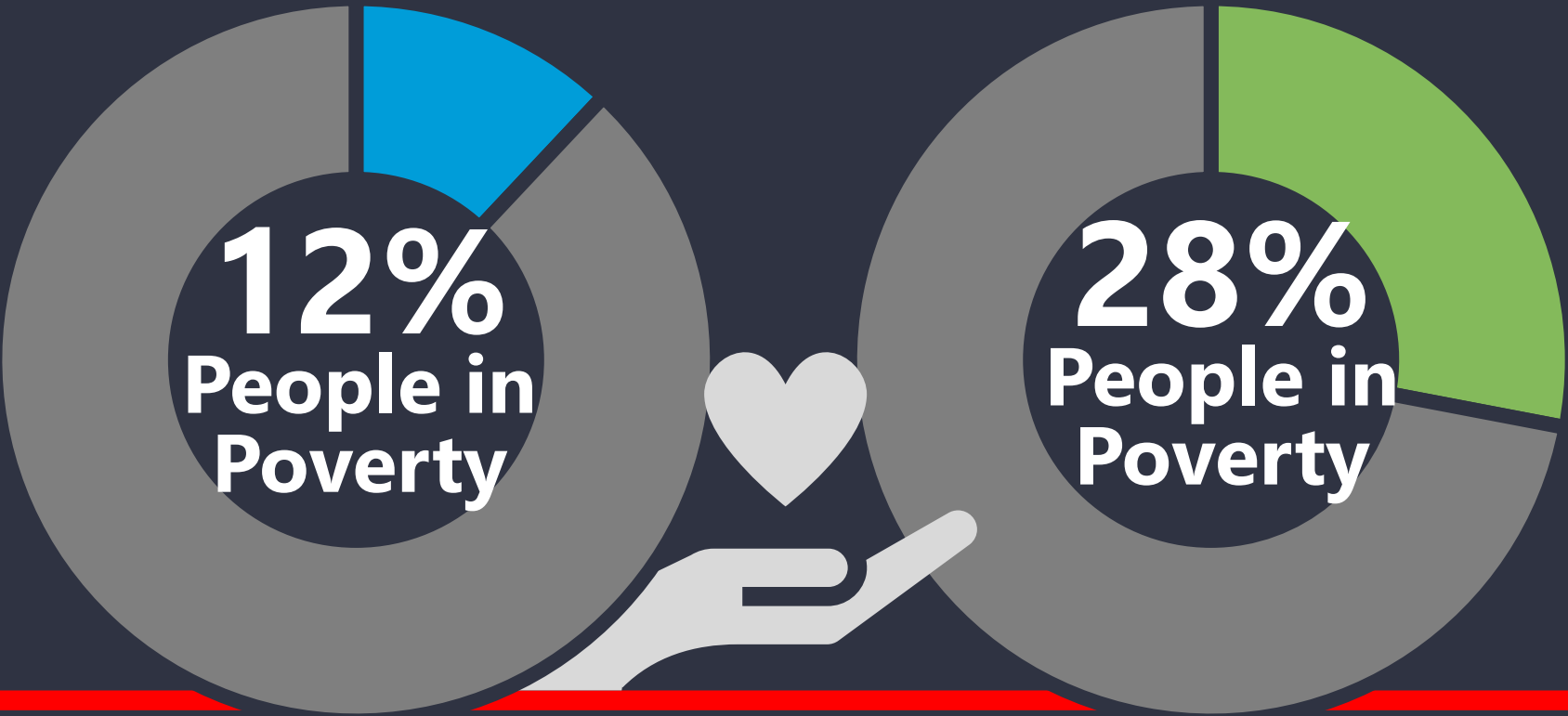
Existing

Proposed



5 minute  
walk

# ACCESS TO HIGH-FREQUENT SERVICE



Existing

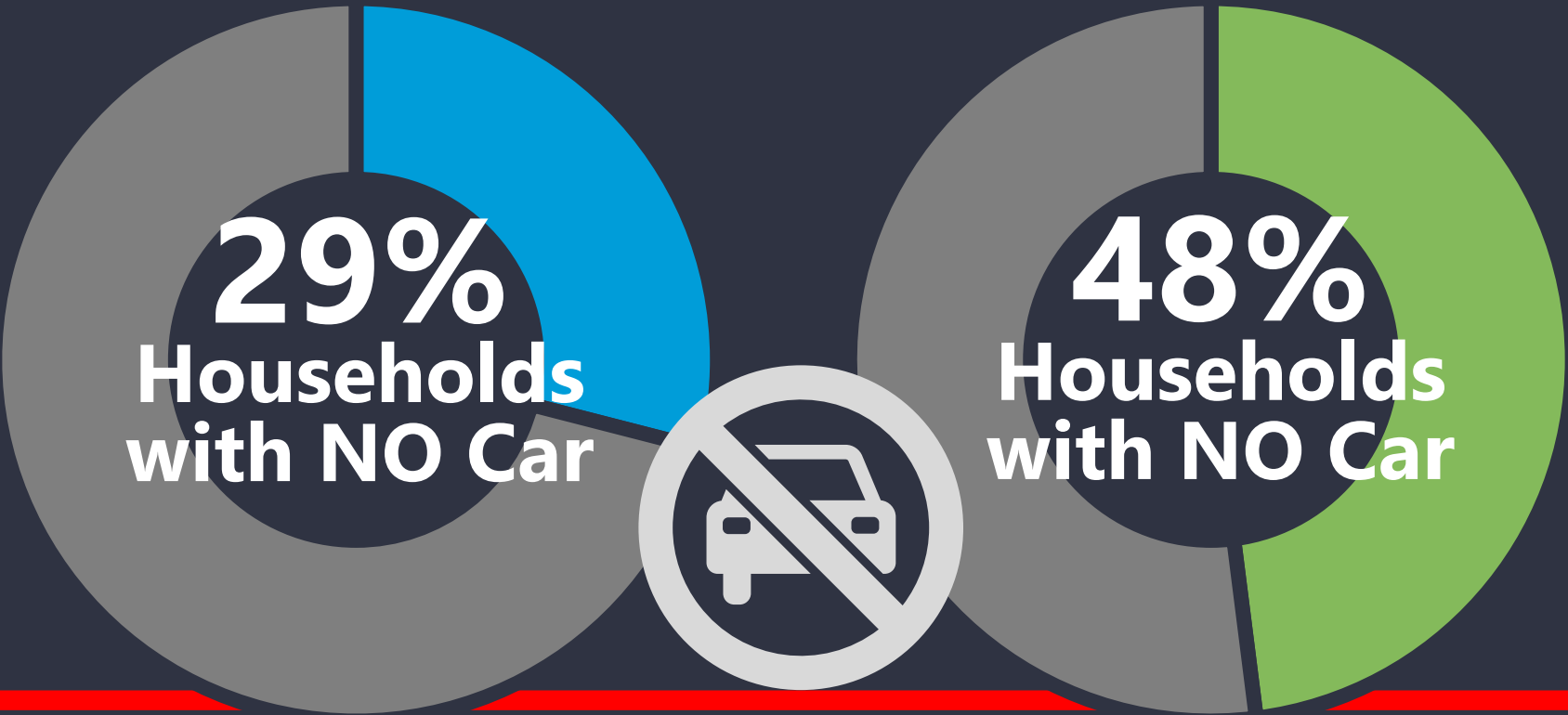
Proposed



5 minute  
walk



# ACCESS TO HIGH-FREQUENT SERVICE



Existing

Proposed



5 minute  
walk

# QUICKPOLL #1



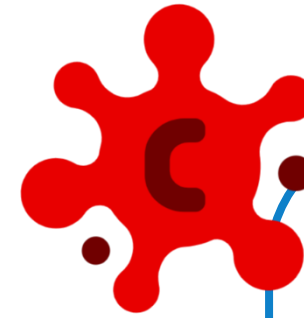
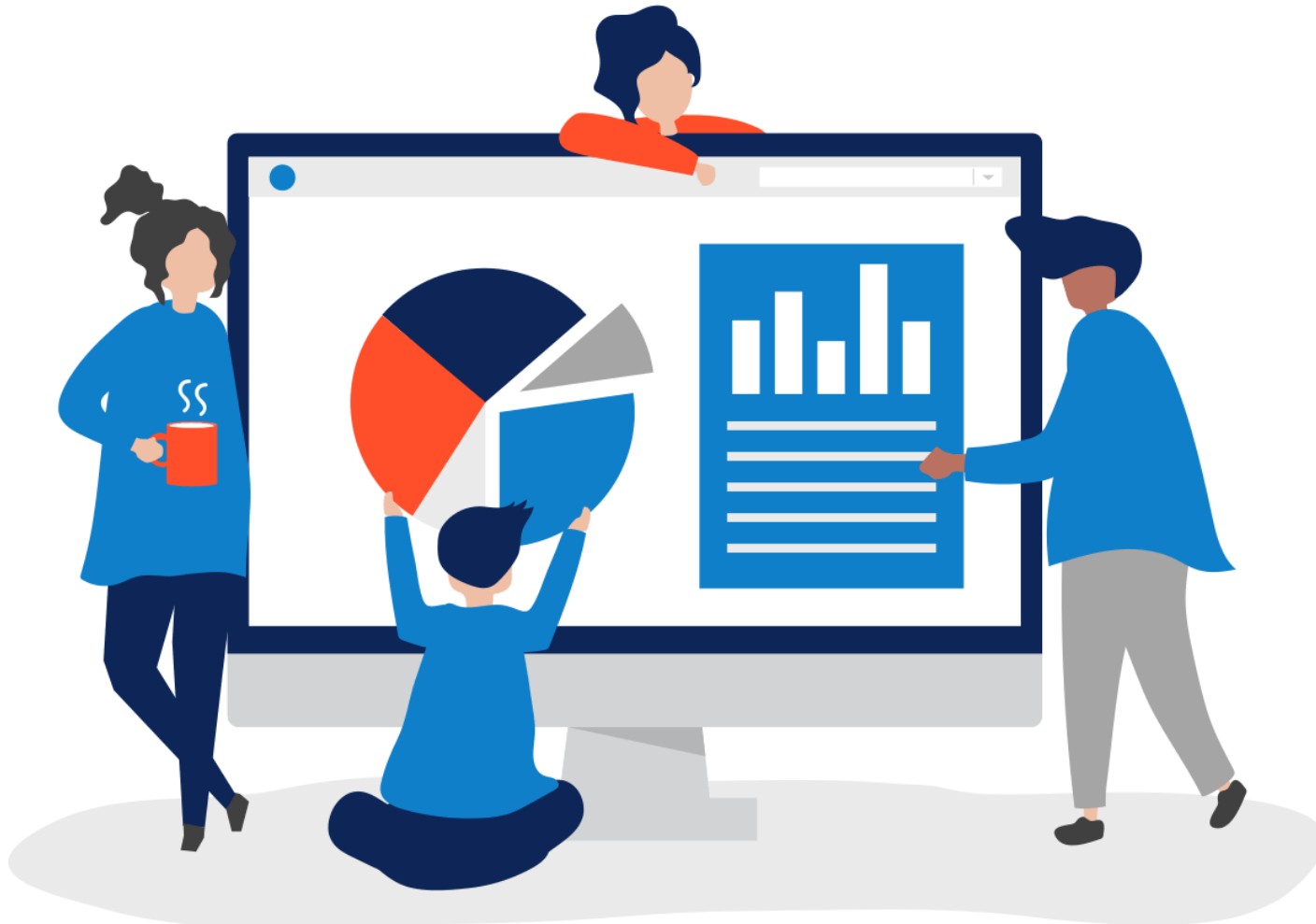
Better  
Bus  
Network



MIAMI-DADE  
COUNTY



# Let's Whiteboard This!



## Conceptboard

*Today, we will be using Conceptboard as a shared workspace to allow you to get up close and personal with the proposed Better Bus Network, collect input and have an open discussion about the changes.*

*You can access the digital whiteboard through this link:*  
<https://app.conceptboard.com/board/gdy0-oxb3-yu86-i740-76sk>



# INTERACTIVE TOOL



Sticky Note Tool



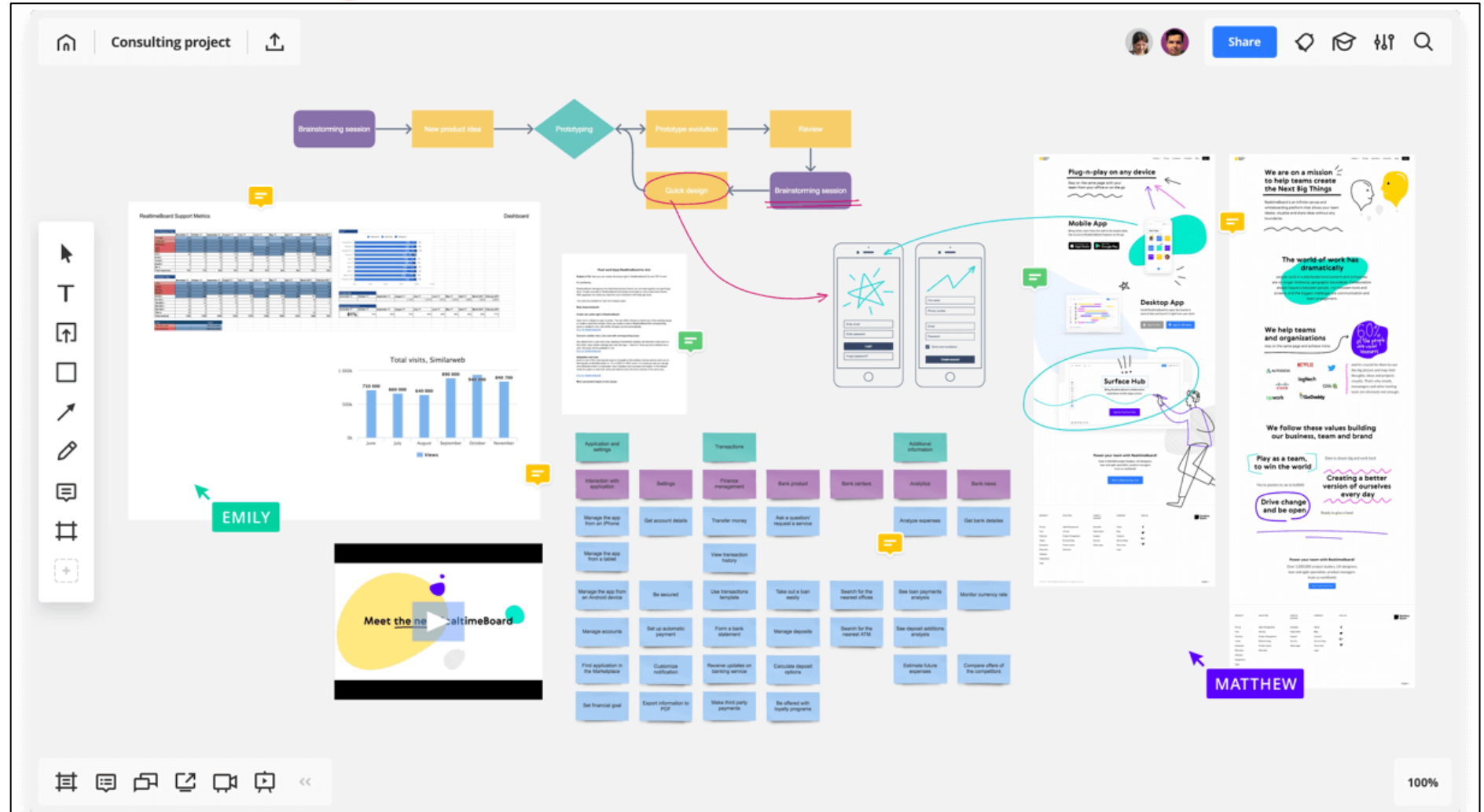
Highlight Tool  
(for green/red dots)



Browse Tool



Select Tool



# GROUND RULES

*In an effort to maintain a safe and respectable forum, we ask that participants abide by the following guidelines during this portion of the meeting.*

- All participants' microphones will remain muted, unless it is their turn to speak
- Raise hand to ask a question - only one person speaks at a time
- Profanity or inappropriate language will not be tolerated. Be respectful when leaving comments - inappropriate comments will be removed
- Listen to what others have to say and respect others' points of view
- When speaking, be mindful of background noises
- Speaking time is limited; manage your time - everyone participates, no one dominates
- Stay on topic – all comments should be related to the proposed Better Bus Network



# PUBLIC ENGAGEMENT

Better  
Bus  
Network



MIAMI-DADE  
COUNTY





# 2021

- Online Survey
- Community Meetings
- Stakeholder Meetings
- Project Splash Page
- Text Message Line
- Phone Scheduler
- Email Desk





Services & Information ▾

News & Social Media ▾

Your Government ▾

Employees ▾



Log in

[Home](#) > [Transportation & Public Works](#) > Better Bus Project

## A Better Bus Network for Miami-Dade County

Miami-Dade Transit is redesigning the bus network to increase frequent bus routes and create better connections across Miami-Dade County.

While elevated rail, like Metrorail and Metromover, is a key part of our County's transit network, buses are the most flexible component of a transit system and have the highest potential for immediate improvement. If we want to improve access to opportunity by transit quickly, changing the bus network is the fastest way to make a difference.

### Proposed Better Bus Network

The proposed Better Bus Network will create a ~~more useful network~~, especially across the most dense and walkable parts of Miami-Dade County. [View the proposed network.](#)

This [3-minute survey](#) will help us get final feedback as we implement a Better Bus Network.

The proposed network will:

### WE WANT TO HEAR FROM YOU

[Submit your feedback online](#) before service changes are proposed to the Board of County Commissioners in Spring 2021.

Other ways to submit feedback:

- [Send an email](#)
- Send a text message to [786-226-0590](tel:786-226-0590)
- Schedule a [one-on-one conversation](#) with a team member

GIVE FEEDBACK ONLINE

## WE WANT TO HEAR FROM YOU

[Submit your feedback online](#) before service changes are proposed to the Board of County Commissioners in Spring 2021.

Other ways to submit feedback:

➤ [Send an email](#)

➤ Send a text message to **786-226-0590**

➤ Schedule a [one-on-one conversation](#) with a team member

GIVE FEEDBACK ONLINE

STAY CONNECTED



**questions@betterbus.miami**



**786-226-0590**



**[www.betterbus.miami/call](http://www.betterbus.miami/call)**

# QUICKPOLL #2



Better  
Bus  
Network

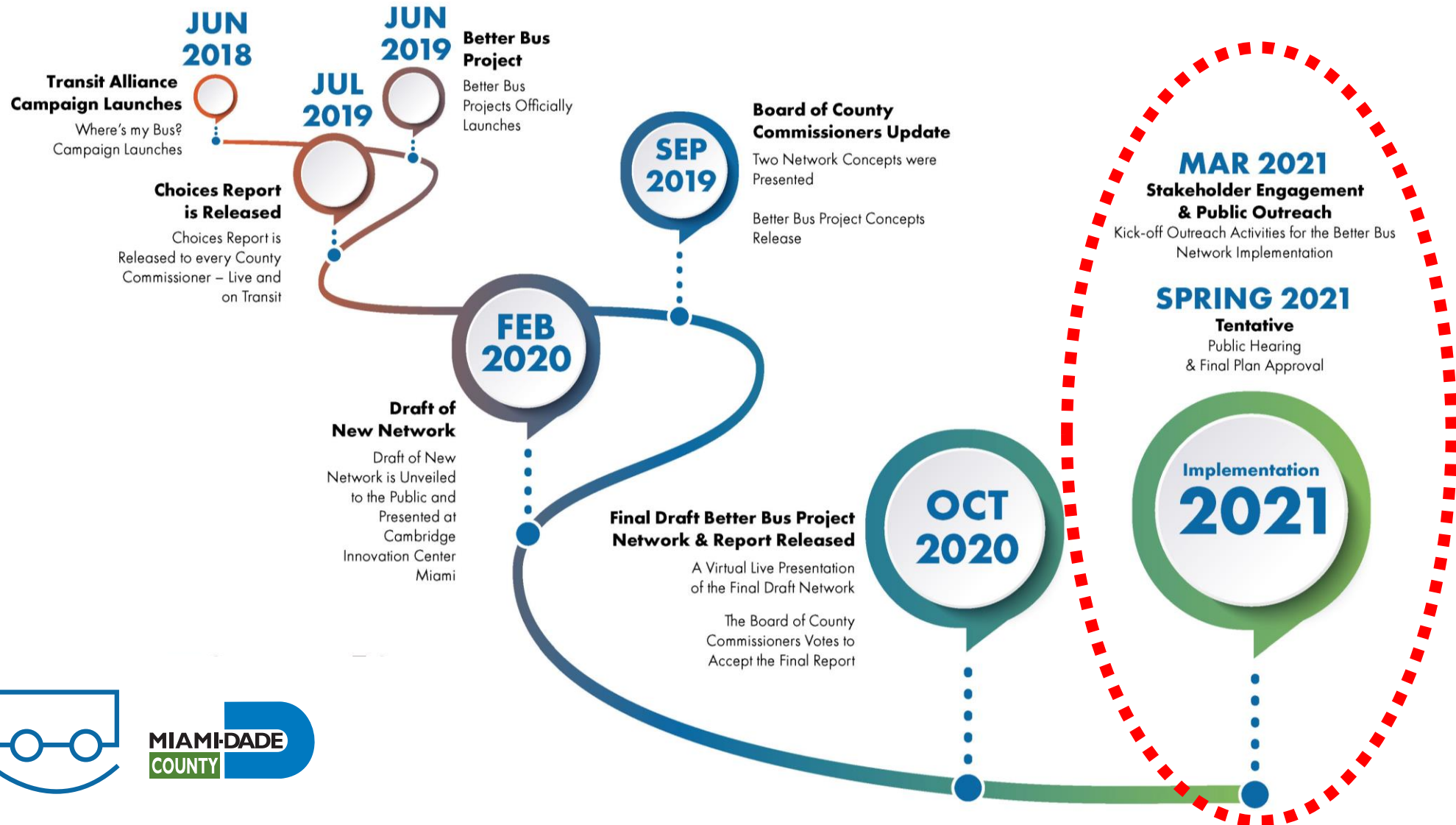


MIAMI-DADE  
COUNTY





# NEXT STEPS



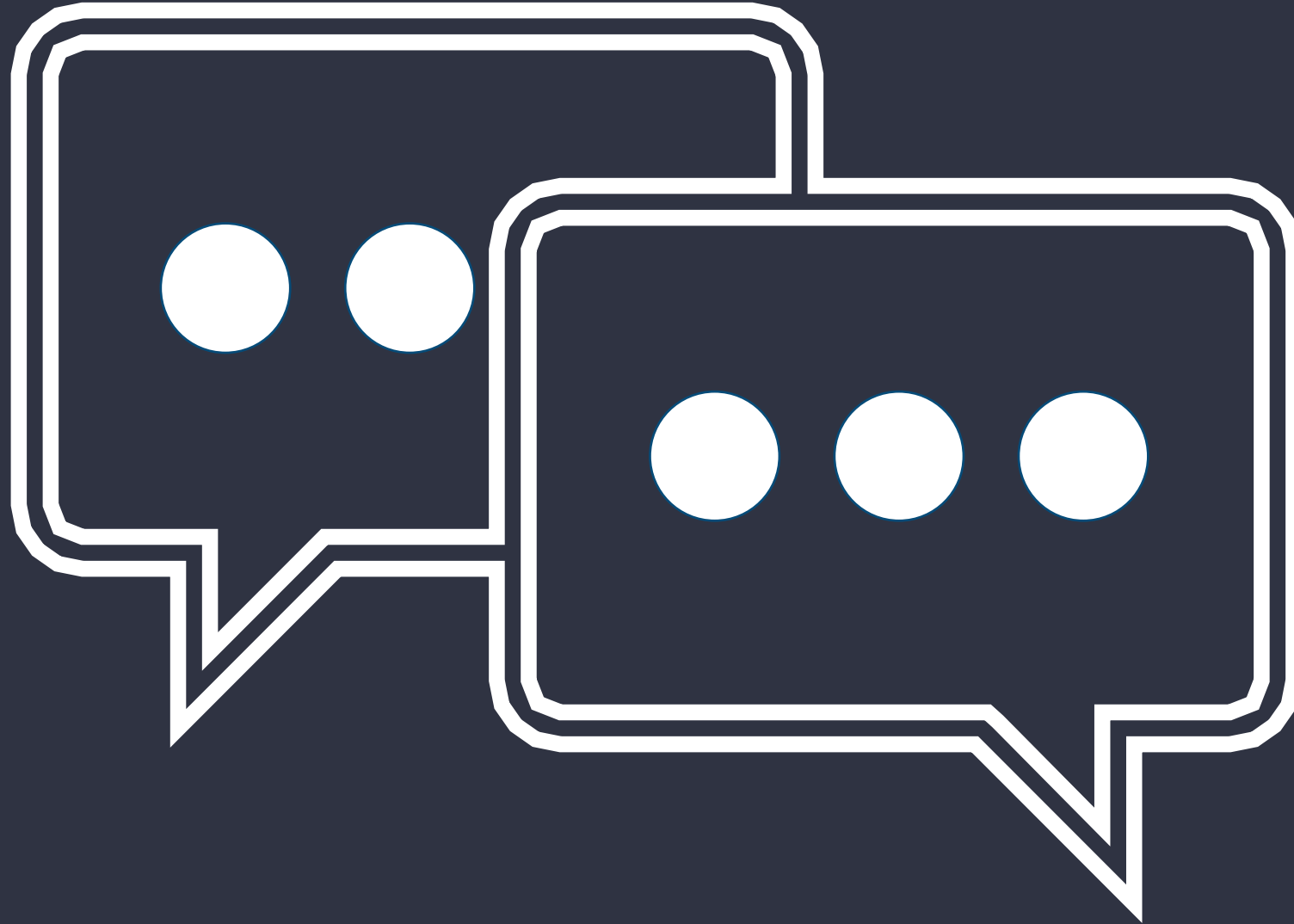
Better  
Bus  
Network



MIAMI-DADE  
COUNTY

# QUESTIONS?

Better  
Bus  
Network





# THANK YOU!

Better  
Bus  
Network



MIAMI-DADE  
COUNTY





**Better  
Bus  
Network**



**MIAMI-DADE  
COUNTY**



**Text 786-226-0590**



**[www.miamidade.gov/betterbus](http://www.miamidade.gov/betterbus)**



**[questions@betterbus.miami](mailto:questions@betterbus.miami)**

