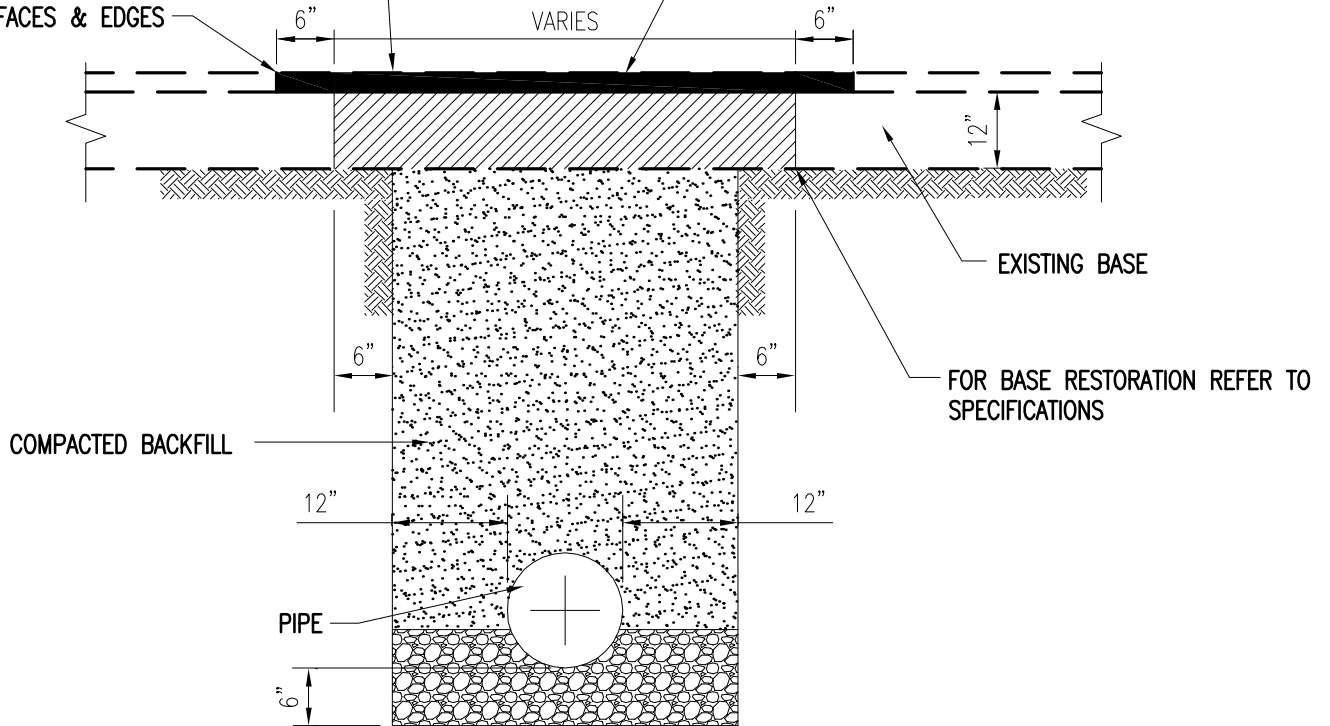


**PLAN**

FOR PAVEMENT RESTORATION, REFER TO D.O.T., MIAMI DADE COUNTY PUBLIC WORKS OR SPECIFIC MUNICIPALITY STANDARDS.

ASPHALTIC CONCRETE THICKNESS TO BE THE SAME AS ADJACENT ROADWAY, OR 1½ INCH MIN.

TACK COAT ALL SURFACES & EDGES



**SECTION A-A & B-B**

ITEM	CROSS REF.	SPEC. REF.

STANDARD DETAIL

PAVEMENT RESTORATION  
TYPE "M"

A  
4.0  
SHEET 1 OF 1



ISSUE DATE

11/01/2006

APPROVED BY

V.E.F.