

The Miami-Dade Water and Sewer Department is committed to serving the needs of Miami-Dade County residents, businesses, and visitors by providing high-quality drinking water and safe-guarding public health and the environment.

In order to achieve these goals, the Miami-Dade County Code, Chapter 32, Article VIII, was adopted. This code requires backflow prevention assemblies to be installed on certain services. A backflow prevention assembly is a mechanical valve arrangement used to protect the potable water supply by preventing the reversal of water flow that may contain contaminants or pollutants due to a cross-connection.

The code also requires backflow prevention assemblies to be tested upon installation and every year thereafter by a Certified Backflow Prevention Assembly Tester. Initial and annual testing ensures that the assembly is working properly and can provide adequate protection to our drinking water.

“Working together we can protect our drinking water for future generations.”



Miami-Dade Water and Sewer Department
Cross-Connection Control Unit
1001 NW 11th Street
Miami, FL 33136
Hotline: 305-547-3046
Fax: 786-268-5485
email: ccc@miamidade.gov

<http://www.miamidade.gov/water/cross-connection-backflow.asp>

QUALITY. VALUE. ECONOMIC GROWTH.

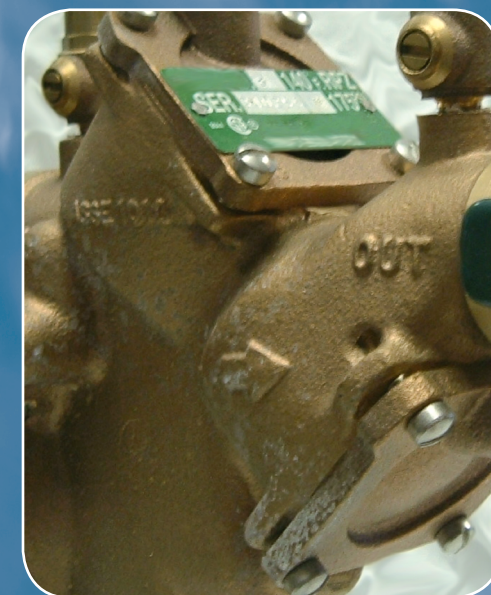
WWW.MIAMIDADE.GOV/WATER



110_01-41 8/15

Important Safety Information

Backflow Prevention Assembly Installation



What is a backflow prevention assembly?

A backflow prevention assembly is a mechanical valve arrangement used to protect the public potable water supply by preventing the reversal of water flow that may contain contaminants or pollutants due to a cross-connection.

There are different types of backflow prevention assemblies for different uses and different degrees of hazards:

Reduced Pressure Principle Assembly (RP)

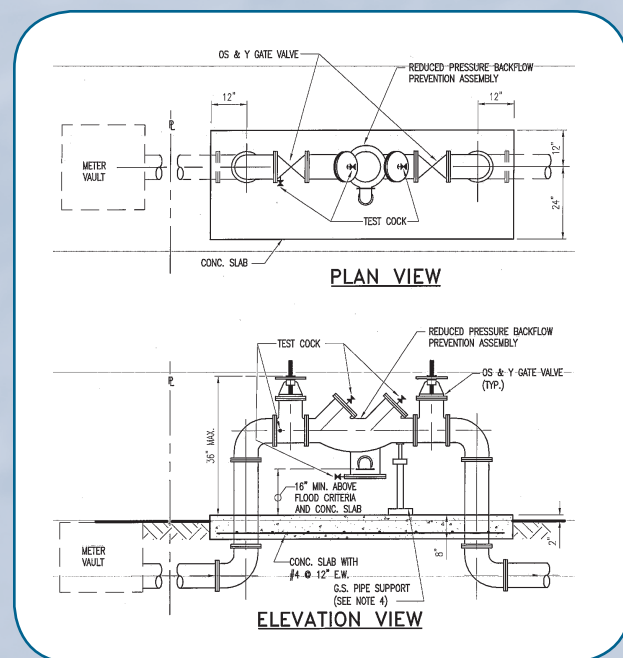
Typically installed at the domestic water service connection

Double Check Valve Assembly (DCVA) and Double Check Detector Assembly (DCDA)

Typically installed at the water service connection that supplies fire suppression systems

Pressure Vacuum Breaker (PVB)

Typically installed at the water service connection that supplies lawn irrigation systems



Reduced Pressure Principle Assembly (RP)

Why must I have the assembly installed and tested?

The Miami-Dade County Code, Chapter 32, Article VIII, requires backflow prevention assemblies to be installed on certain services depending on the degree of hazard, the type of service (i.e. fire suppression system, lawn irrigation system and domestic water system), and the use of the facility. Section 32-154 outlines the existing water customers that are required to install backflow prevention assemblies by June 1, 2007 and January 1, 2012, based on the criteria mentioned above.

This code is also a requirement of the State of Florida, and can be found in Florida Administrative Code section 62-555.360. These assemblies are required to be tested upon installation and every year thereafter to ensure they are working properly and providing adequate protection to our drinking water. A copy of the Miami-Dade County Code, Chapter 32, Article VIII, can be downloaded at <http://www.miamidade.gov/water/library/guidelines/crossconnection-backflow-code.pdf>

Who can install and test this assembly?

A licensed plumber or contractor must install the backflow prevention assembly according to the standards set by the Miami-Dade Water and Sewer Department (WASD). A Certified Backflow Prevention Assembly Tester must test the assembly. A partial list of companies that provide this service is maintained by the WASD, Cross-Connection Control Unit, (305) 547-3046, and can be downloaded from our website at <http://www.miamidade.gov/water/cross-connection-backflow.asp>

How much does it cost to have this done?

Each individual company determines the cost of this service. Prices may differ greatly, so obtaining several quotes is recommended.

Do I have to get a permit? If so, is there a permit fee to have the backflow prevention assembly installed?

Yes, a permit must be obtained and there is a permit fee to have a backflow prevention assembly installed. The fees are determined by the building department of the municipality in which you are having the assembly installed.

What do I do after the assembly has been installed and tested?

Submit the test results, completed by the Certified Backflow Prevention Assembly Tester, on an approved test form to the Miami-Dade Water and Sewer Department, Cross-Connection Control Unit via mail to 1001 NW 11th Street, Miami, Florida 33136, via fax to 786-268-5485, or email to ccc@miamidade.gov.

Checklist for Backflow Prevention Assembly Installation

- ☐ Contact a licensed plumber/contractor to install the required backflow prevention assembly according to the standards set by the Miami-Dade Water and Sewer Department.
- ☐ Have the newly installed backflow prevention assembly tested by a Certified Backflow Prevention Assembly Tester.
- ☐ Submit the test results, completed by the certified tester, on an approved test form to the Miami-Dade Water and Sewer Department, Cross-Connection Control Unit via mail to:

1001 NW 11th Street
Miami, Florida 33136

or fax them to 786-268-5485 or email them to ccc@miamidade.gov.