

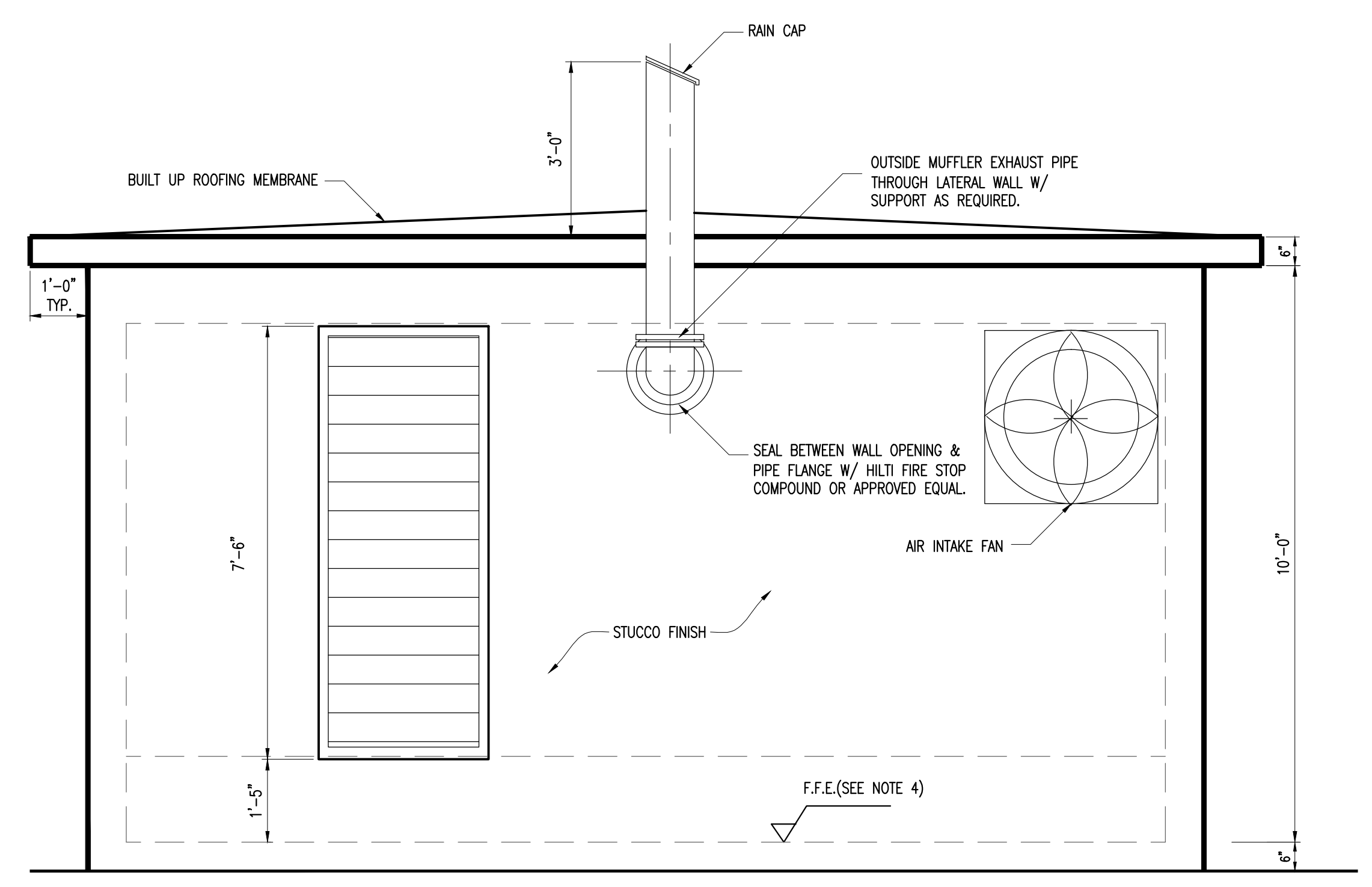
PCTS 00000/CONTRACT X-000 or RPQ/ERX00000
SUBMERSIBLE PUMPING STATION WITH GENERATOR
PUMPING STATION No. 0000 (UPDATE 2015)
 PROJECT OFFICIAL ADDRESS
EMERGENCY GENERATOR BUILDING
FLOOR PLAN, SECTIONS AND ELEVATIONS

DRAWING HISTORY			
RELEASED FOR	DATE	BY	
X REVIEW 90%	06/19/15	LMS	
REVIEW 00%			
PERMIT			
BID			
AS-BUILT			

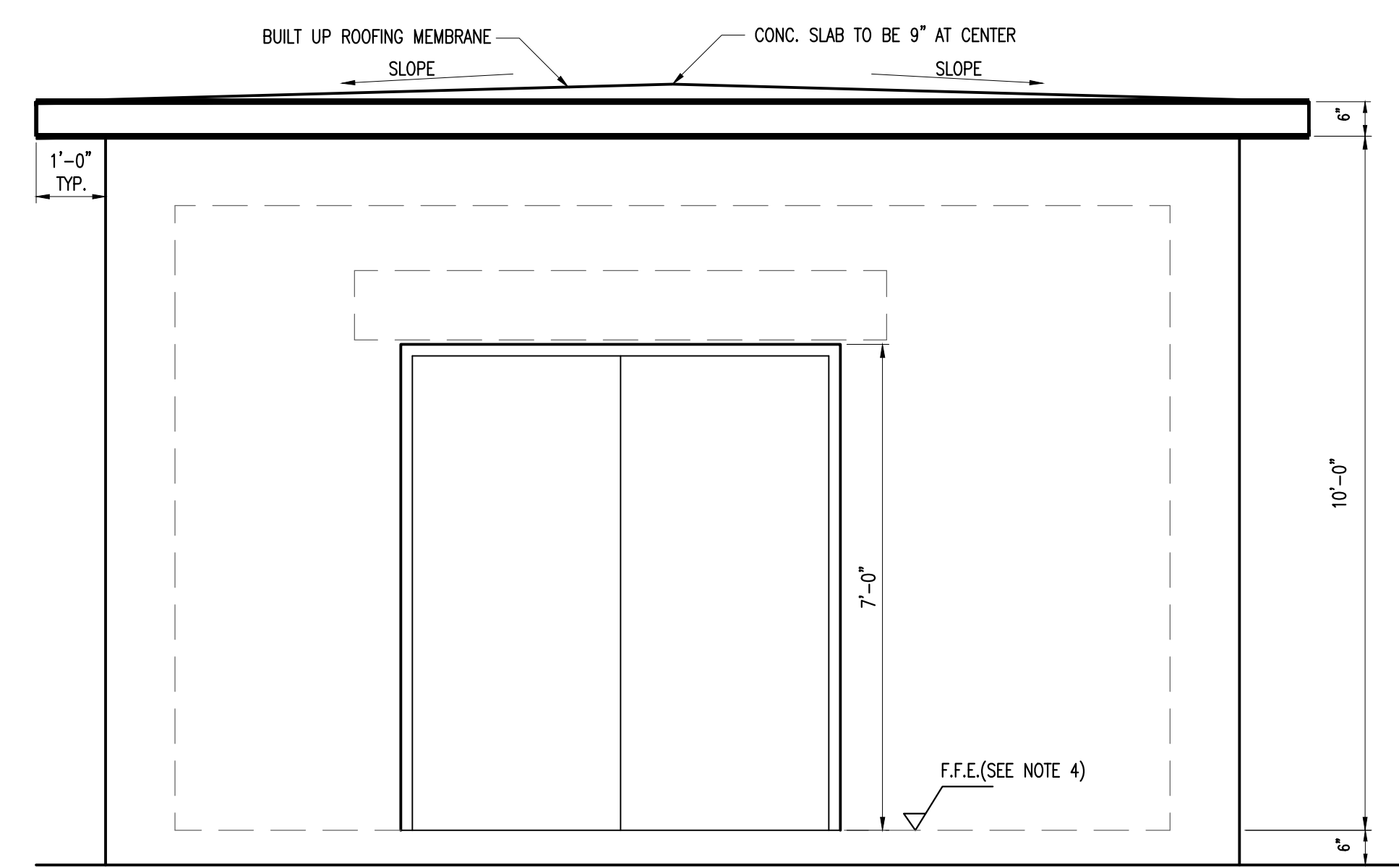
REVISIONS			
No.	DESCRIPTION	DATE	BY
Δ XXXXXX	XXXXXX	06/19/15	LMS
XXXXXX	XXXXXX		

APPROVALS	
PROJECT MGR: X.X.X.	CHECKED: X.X.X.
DESIGNED: X.X.X.	DRAWN: X.X.X.
CHIEF ENGINEER: J.B.F.	
DESIGN MGR.: R.J.A.	
UNIT HEAD: X.X.X.	

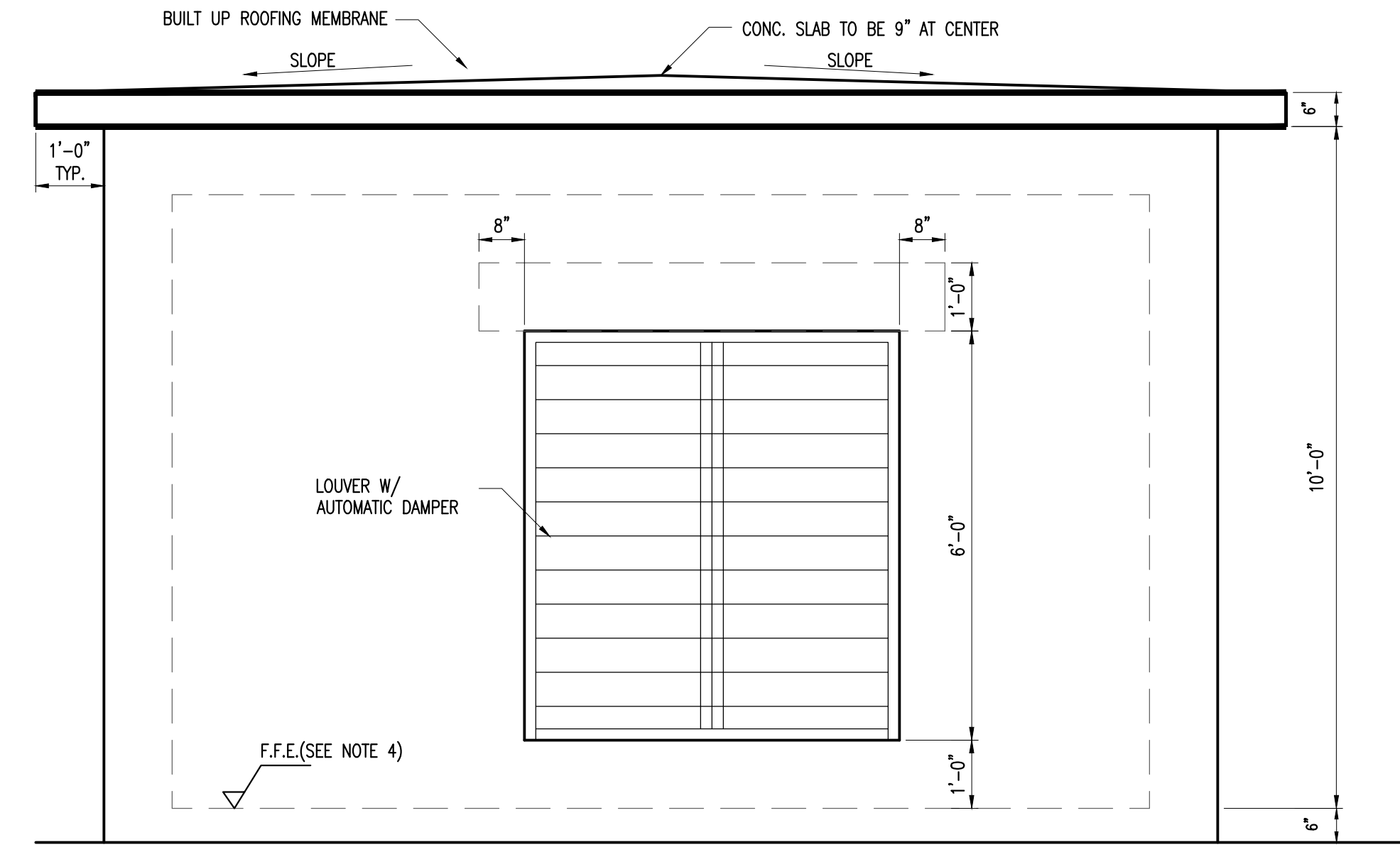
Xxxx Xxxxx, P.E.
 Xxxxx Engineer
 State of Florida—License No. 00000
 Date: _____



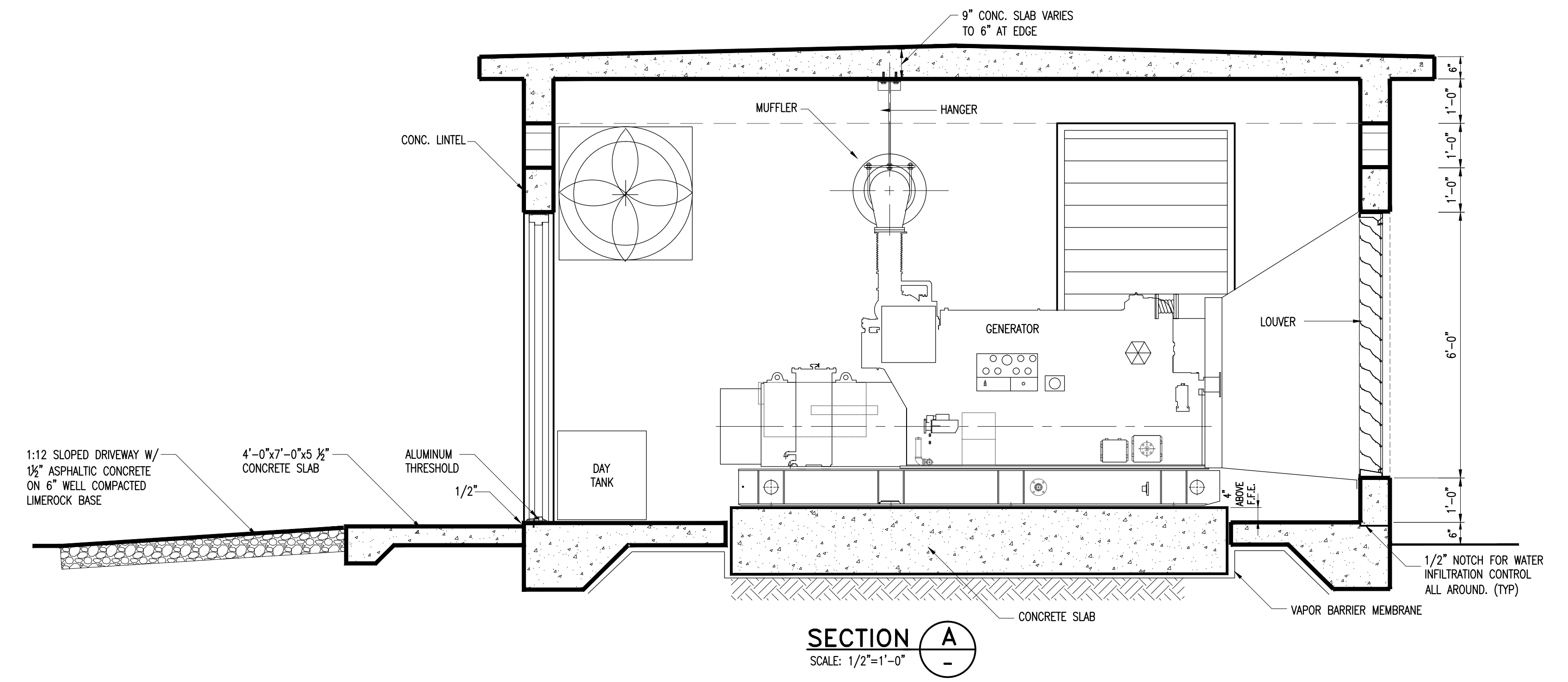
LEFT SIDE ELEVATION B
 SCALE: 1/2"=1'-0"



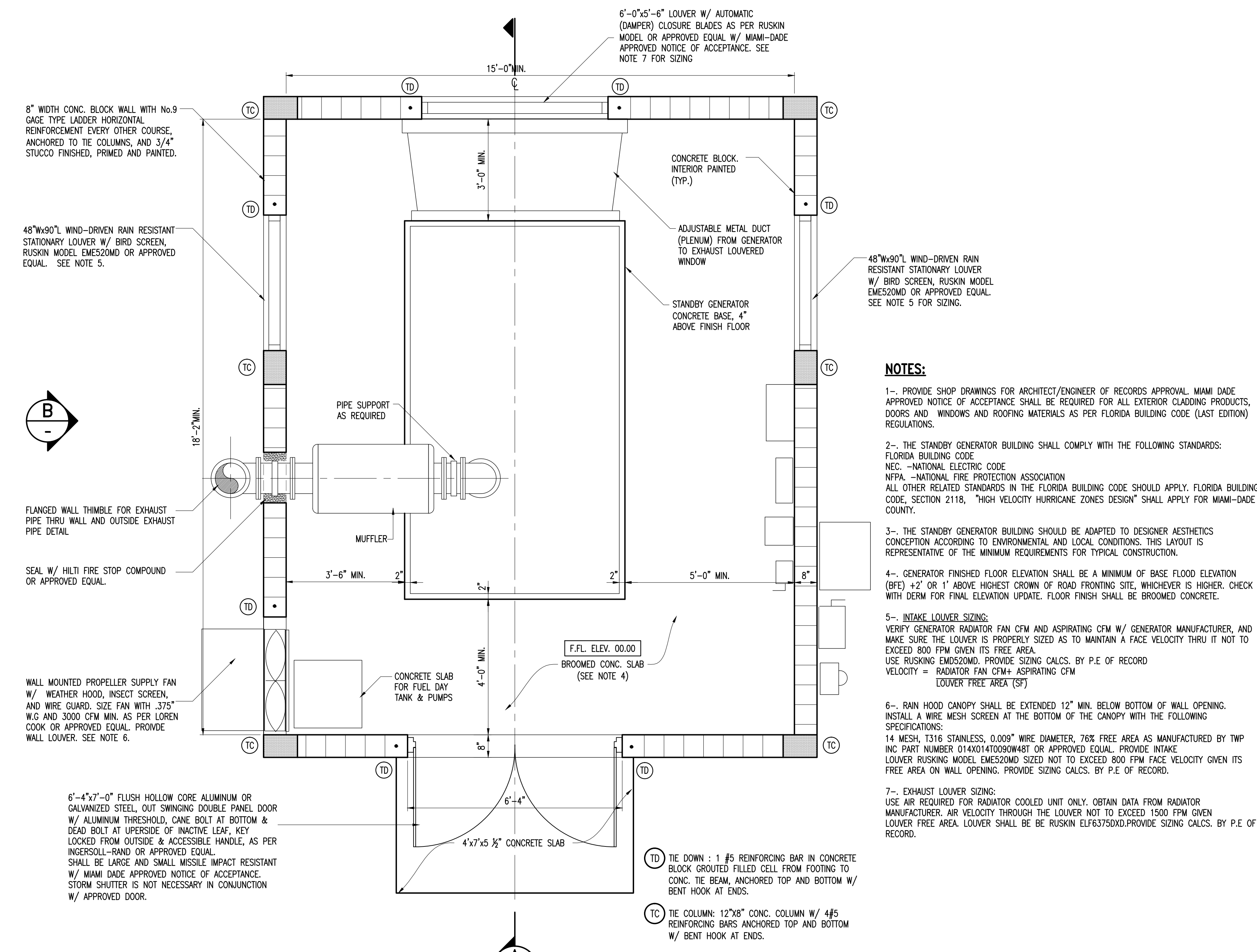
FRONT ELEVATION
 SCALE: 1/2"=1'-0"



REAR ELEVATION
 SCALE: 1/2"=1'-0"



SECTION A
 SCALE: 1/2"=1'-0"



FLOOR PLAN
 SCALE: 1/2"=1'-0"

- NOTES:**
- 1- PROVIDE SHOP DRAWINGS FOR ARCHITECT/ENGINEER OF RECORDS APPROVAL. MIAMI DADE APPROVED NOTICE OF ACCEPTANCE SHALL BE REQUIRED FOR ALL EXTERIOR CLADDING PRODUCTS, DOORS AND WINDOWS AND ROOFING MATERIALS AS PER FLORIDA BUILDING CODE (LAST EDITION) REGULATIONS.
 - 2- THE STANDBY GENERATOR BUILDING SHALL COMPLY WITH THE FOLLOWING STANDARDS:
 FLORIDA BUILDING CODE
 NEC - NATIONAL ELECTRIC CODE
 NFPA - NATIONAL FIRE PROTECTION ASSOCIATION
 ALL OTHER RELATED STANDARDS IN THE FLORIDA BUILDING CODE SHOULD APPLY. FLORIDA BUILDING CODE, SECTION 2118, "HIGH VELOCITY HURRICANE ZONES DESIGN" SHALL APPLY FOR MIAMI-DADE COUNTY.
 - 3- THE STANDBY GENERATOR BUILDING SHOULD BE ADAPTED TO DESIGNER AESTHETICS CONCEPTION ACCORDING TO ENVIRONMENTAL AND LOCAL CONDITIONS. THIS LAYOUT IS REPRESENTATIVE OF THE MINIMUM REQUIREMENTS FOR TYPICAL CONSTRUCTION.
 - 4- GENERATOR FINISHED FLOOR ELEVATION SHALL BE A MINIMUM OF BASE FLOOD ELEVATION (BFE) +2' OR 1' ABOVE HIGHEST CROWN OF ROAD FRONTING SITE, WHICHEVER IS HIGHER. CHECK WITH DERM FOR FINAL ELEVATION UPDATE. FLOOR FINISH SHALL BE BROOMED CONCRETE.
 - 5- INTAKE LOUVER SIZING:
 VERIFY GENERATOR RADIA TOR FAN CFM AND ASPIRATING CFM W/ GENERATOR MANUFACTURER, AND MAKE SURE THE LOUVER IS PROPERLY SIZED AS TO MAINTAIN A FACE VELOCITY THRU IT NOT TO EXCEED 800 FPM GIVEN ITS FREE AREA.
 USE RUSKING EMDS20MD. PROVIDE SIZING CALCS. BY P.E. OF RECORD
 VELOCITY = RADIA TOR FAN CFM+ ASPIRATING CFM / LOUVER FREE AREA (SF)
 - 6- RAIN HOOD CANOPY SHALL BE EXTENDED 12" MIN. BELOW BOTTOM OF WALL FOLLOWING. INSTALL A WIRE MESH SCREEN AT THE BOTTOM OF THE CANOPY WITH THE FOLLOWING SPECIFICATIONS:
 14 MESH, T316 STAINLESS, 0.009" WIRE DIAMETER, 76% FREE AREA AS MANUFACTURED BY TWP INC PART NUMBER 014X014T0090W48T OR APPROVED EQUAL. PROVIDE INTAKE LOUVER RUSKING MODEL EMDS20MD SIZED NOT TO EXCEED 800 FPM FACE VELOCITY GIVEN ITS FREE AREA ON WALL OPENING. PROVIDE SIZING CALCS. BY P.E. OF RECORD.
 - 7- EXHAUST LOUVER SIZING:
 USE AIR REQUIRED FOR RADIA TOR COOLED UNIT ONLY. OBTAIN DATA FROM RADIA TOR MANUFACTURER. AIR VELOCITY THROUGH THE LOUVER NOT TO EXCEED 1500 FPM GIVEN LOUVER FREE AREA. LOUVER SHALL BE RUSKING ELF6375DXD. PROVIDE SIZING CALCS. BY P.E. OF RECORD.

8" WIDTH CONC. BLOCK WALL WITH No.9 GAGE TYPE LADDER HORIZONTAL REINFORCEMENT EVERY OTHER COURSE, ANCHORED TO THE COLUMNS, AND 3/4" STUCCO FINISHED, PRIMED AND PAINTED.

48"Wx90"L WIND-DRIVEN RAIN RESISTANT STATIONARY LOUVER W/ BIRD SCREEN, RUSKIN MODEL EMES20MD OR APPROVED EQUAL. SEE NOTE 5.

FLANGED WALL THIMBLE FOR EXHAUST PIPE THRU WALL AND OUTSIDE EXHAUST PIPE DETAIL

WALL MOUNTED PROPELLER SUPPLY FAN W/ WEATHER HOOD, INSECT SCREEN, AND WIRE GUARD. SIZE FAN WITH .375" W.G. AND 3000 CFM MIN. AS PER LOREN COOK OR APPROVED EQUAL. PROVIDE WALL LOUVER. SEE NOTE 6.

6'-4"x7'-0" FLUSH HOLLOW CORE ALUMINUM OR GALVANIZED STEEL, OUT SWINGING DOUBLE PANEL DOOR W/ ALUMINUM THRESHOLD, CANE BOLT AT BOTTOM & DEAD BOLT AT UPSIDE OF INACTIVE LEAF, KEY LOCKED FROM OUTSIDE & ACCESSIBLE HANDLE, AS PER INGERSOLL-RAND OR APPROVED EQUAL. SHALL BE LARGE AND SMALL MISSILE IMPACT RESISTANT W/ MIAMI DADE APPROVED NOTICE OF ACCEPTANCE. STORM SHUTTER IS NOT NECESSARY IN CONJUNCTION W/ APPROVED DOOR.

TD TIE DOWN : 1 #5 REINFORCING BAR IN CONCRETE BLOCK GROUTED FILLED CELL FROM FOOTING TO CONC. THE BEAM, ANCHORED TOP AND BOTTOM W/ BENT HOOK AT ENDS.
 TC THE COLUMN: 12"x8" CONC. COLUMN W/ #5 REINFORCING BARS ANCHORED TOP AND BOTTOM W/ BENT HOOK AT ENDS.