

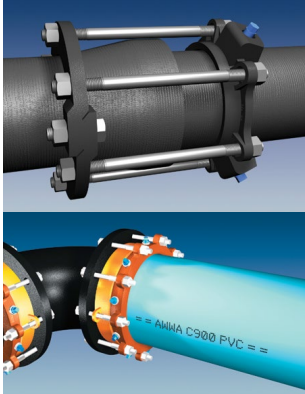


Sheet Number: 3.1

Product Specifications

Miami-Dade Water & Sewer Department
Address: 3071 SW 38th Ave, Miami, FL 33146
Phone : (305) 665-7477
Email: WASD-STANDARDS@miamidade.gov

Ductile Iron Mechanical Joint Restraints



Minimum Standards

- ANSI/AWWA: C111, C151, C110
- ASTM A536
- MDWASD Specification: Section 33 14 00 (15060)

Other Requirements

- NSF61/ANSI for potable water applications

Applications

- Water and Sewer

PRE-APPROVED MANUFACTURER

- | | |
|----------------------|--------------------------|
| 1) EBAA Iron, Inc. | 2) Ford |
| 3) Sigma Corporation | 4) SIP |
| 5) Smith Blair | 6) Star Pipe |
| 7) Tyler Union | 8) American Flow Control |

Issue Date:

4-4-2016

Revised Date:

6-20-2023

APPROVED PRODUCTS / MODELS

SIZE	MANUFACTURER	MODEL	SUBMITTED
4" - 30"	EBAA Iron, Inc.	Series 1700	<input type="checkbox"/>
4" - 30"	EBAA Iron, Inc.	Series 2100	<input type="checkbox"/>
4" - 30"	EBAA Iron, Inc.	Series 1100	<input type="checkbox"/>
4" - 12"	EBAA Iron, Inc.	Series 1600TD	<input type="checkbox"/>
4" - 30"	EBAA Iron, Inc.	Series 1100HD	<input type="checkbox"/>
4" - 12"	EBAA Iron, Inc.	Tru-Dual Series 1500TD	<input type="checkbox"/>
4" - 30"	EBAA Iron, Inc.	Megaflange Series 2100	<input type="checkbox"/>
4" - 30"	Ford	Uni-flange Series 400, UFA 400-C-x series, adapter flange	<input type="checkbox"/>
4" - 12"	Ford	Uni-Flange Series 1390C	<input type="checkbox"/>
4" - 12"	Ford	FFCA-xxx style	<input type="checkbox"/>
4" - 30"	Sigma Corporation	SigmaFlange with One Lock SLDE	<input type="checkbox"/>
4" - 30"	Sigma Corporation	SIGMA ONE-LOK™ Series SLDEH	<input type="checkbox"/>
4" - 30"	Sigma Corporation	SIGMA ONE-LOK™ Series SLD	<input type="checkbox"/>
4" - 30"	Sigma Corporation	PV-LOK™ Series PWP for DIP	<input type="checkbox"/>
4" - 30"	Sigma Corporation	Series SSLDH	<input type="checkbox"/>
4" - 30"	Sigma Corporation	ONE-LOK Series SLDE	<input type="checkbox"/>
4" - 30"	Sigma Corporation	ONE-LOK Series SSLD Split Gland for DIP	<input type="checkbox"/>
4" - 30"	SIP	EZ Grip	<input type="checkbox"/>
4" - 30"	Smith Blair	Cam Lok Series 111	<input type="checkbox"/>

APPROVED PRODUCTS / MODELS			
SIZE	MANUFACTURER	MODEL	SUBMITTED
4" - 30"	Smith Blair	Bell-Lock Series 165	<input type="checkbox"/>
4" - 30"	Smith Blair	911 Flange - Lock Restrained FCA	<input type="checkbox"/>
4" - 30"	Smith Blair	Cam Lok Series 120	<input type="checkbox"/>
4" - 16"	Star Pipe	Series 1100C	<input type="checkbox"/>
4" - 30"	Star Pipe	Stargrip Series 3100P	<input type="checkbox"/>
4" - 30"	Star Pipe	Stargrip Series 3000	<input type="checkbox"/>
4" - 30"	Star Pipe	Super Flange Series 7200	<input type="checkbox"/>
4" - 30"	Star Pipe	Split Stargrip Series 3100S	<input type="checkbox"/>
4" - 12"	Star Pipe	Series 100	<input type="checkbox"/>
4" - 16"	Star Pipe	StarFlange Series 3200	<input type="checkbox"/>
4" - 30"	Star Pipe	Stargrip Series 3000OS	<input type="checkbox"/>
4" - 30"	Star Pipe	Split Stargrip Series 3000S	<input type="checkbox"/>
4" - 30"	Star Pipe	Tandem Stargrip Series 3000T	<input type="checkbox"/>
4" - 30"	Tyler Union	Tufgrip TLD	<input type="checkbox"/>
4" - 12"	Tyler Union	Tufgrip Series 3000C	<input type="checkbox"/>
4" - 12"	American Flow Control	Series 2500 RW RNS Alpha Ends (Fire Hydrants and Gate Valves) American-Darling	<input type="checkbox"/>

SIZES FURNISHED:

☐ 4"
☐ 6"
☐ 8"
☐ 10"

☐ 12"
☐ 14"
☐ 16"
☐ 18"

☐ 20"
☐ 24"
☐ 30"
☐ Other

COMMENTS:

Approved by: MDWASD Departmental Standards, Specifications and Products Committee

Revision History:

6-20-2023: Modified American Flow Control Model; Tyler Union Series corrected.