

Program at a Glance

Improvements include:

Installation of 12-inch wastewater line from Pump Station #0333 (15650 Turnberry Drive), along Turnberry Drive on the perimeter of the Don Shula's Golf Club Course

Installation of 12-inch wastewater line along Turnberry Drive to Miami Lakeway North,

Installation of 12-inch wastewater line along Miami Lakeway North to Miami Lakes Drive

QUALITY. VALUE. ECONOMIC GROWTH.	
WWW.MIAMIDADE.GOV/WATER	MIAMI-DADE COUNTY

FACT SHEET

Wastewater Line Replacement

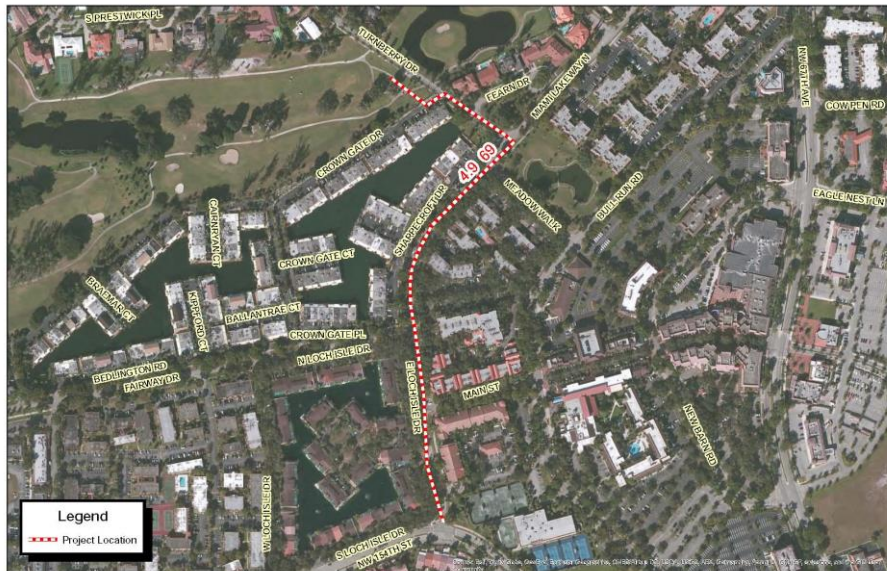
BACKGROUND

On April 9, 2014, the United States District Court for the Southern District of Florida authorized a Consent Decree between Miami-Dade County, the United States of America, the State of Florida, and the Florida Department of Environmental Protection, for improvements to the County's wastewater collection system. The Consent Decree requires a number of operational and maintenance improvements to Miami-Dade's water and sewer system. The installation of new wastewater lines CD Project 4.9 (69) is part of these projects.

PROJECTED SCHEDULE

Construction begins June 2016, with an expected duration of nine (9) months.

PROJECT AREA



FOR MORE INFORMATION:

Bernardo Favole
Public Involvement Manager
305-542-4000
bernafa@miamidade.gov

Adriana Lamar
Chief, Public and Governmental Affairs
786-552-8087
alamar@miamidade.gov