

Project at a Glance

Project Number 6.00

Installation of 7,700 linear feet of gravity sewer mains: Installation of sanitary sewer lateral connections to the property lines.

- Along NW 37 Street from 35 Avenue to NW 32 Avenue.
- Along NW 38 Street from 35 Avenue to NW 33 Avenue.
- Along NW 39 Street from 32 Avenue to NW 33 Avenue.
- Along NW 32 Avenue from NW 36 Street to NW 40 Street.
- Along NW 33 Avenue from NW 36 Street to NW 39 Street.
- Along NW 35 Avenue from NW 36 Street to north of NW 38 Street.
- Along NW 33 Street from NW 31 Avenue to NW 30 Avenue.
- Along NW 30 Avenue 33 Street to NW 34 Street.
- Along NW 34 Street from NW 30 Avenue to NW 27 Avenue.
- The upgrades will not affect the water or the wastewater services in your area.
- There may be temporary lane closures or detours.
- Access to your property will be maintained at all times.
- The areas surrounding the construction will be restored at the conclusion of the project.

Fact Sheet

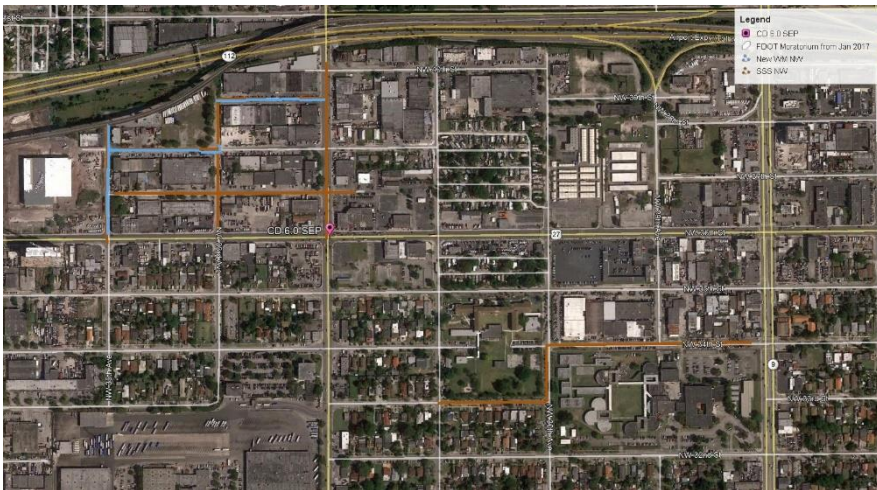
Wastewater Line Replacement

The Miami-Dade Water and Sewer Department (WASD) has embarked on a Capital Improvement Program to provide necessary upgrades to the water and sewer infrastructure to continue providing high quality services, protecting public health, and the environment. One of these projects is a new wastewater line in your neighborhood. This project is part of the Consent Decree Program which requires several operational and maintenance improvements to Miami-Dade's wastewater system.

On April 9, 2014, the United States District Court for the Southern District of Florida authorized a Consent Decree between Miami-Dade County, the United States of America, the State of Florida, and the Florida Department of Environmental Protection, for improvements to the County's wastewater collection system. The rehabilitation of wastewater lines for Consent Decree Project 6.00 is part of this program.

PROJECT INFORMATION / SCHEDULE

Construction of the pipeline is expected to begin in late March 2018 and is scheduled to be completed in fourteen (14) months. Construction work will take place Monday thru Friday from 8 p.m. to 6 a.m. in commercial zones and from 8 a.m. to 5 p.m. in residential areas. The contractor will take additional steps to minimize impacts, but you may experience some noise and intermittent traffic inconveniences due to lane and road closures or detours. At the conclusion of the project, the roadway areas impacted by the construction will be restored. In advance, we thank you for your support as the department works on this necessary infrastructure upgrade.



QUALITY. VALUE. ECONOMIC GROWTH.

WWW.MIAMIDADE.GOV/WATER



FOR MORE INFORMATION/
PARA MÁS INFORMACIÓN

Bernardo Favole
Public Information Manager
305-542-4000
bernafa@miamidade.gov

Adriana Lamar
Chief, Public and Governmental Affairs
786-552-8087
alamar@miamidade.gov