



---

Miami-Dade Water & Sewer  
Department

**Miami-Dade Consolidated PWS  
Water Use Permit No. 13-00017-W**

**Water Conservation Plan  
2017 Annual Report**

**January 1, 2017 - December 31, 2017**

---

**Miami-Dade Water & Sewer Department  
3071 SW 38<sup>th</sup> Avenue  
Miami, FL 33146**

# TABLE OF CONTENTS

INTRODUCTION.....	1
SUMMARY .....	2
SECTION I - PLAN IMPLEMENTATION.....	3
Figure 1 .....	3
Table 1 .....	4
APPENDIX A - BMP IMPLEMENTATION.....	A

## INTRODUCTION

On November 15, 2007, the South Florida Water Management District Governing Board (SFWMD) approved the Miami-Dade Consolidated Water Use Permit (WUP) which requires Miami Dade Water & Sewer Dept. (WASD) to develop a 20-year Water Use Efficiency Plan (Plan) to conserve 19.6 million gallons a day (MGD) of water by 2026. The following is a summary of changes to the WUP since the issuance of the permit:

On November 1, 2010, the SFWMD reissued the permit extending the WUP for an additional three years; on December 16, 2012, the permit was again reissued to increase the permitted allocation and to modify the water supply for the South Miami Heights Water Treatment Plant to include allocation from the Floridan aquifer. On February 9, 2015, the SFWMD issued a modification to the WUP, extending the expiration date to February 9, 2035. The permit was again re-issued on September 21, 2015 due to revisions of certain special permit conditions (specifically 12, 13, 16, 22, 26 through 35 and 38).

To comply with the original WUP requirements, WASD developed the Plan using Florida Department of Environmental Protection's Conserve Florida EZ Guide (Guide). The Guide was developed as a web-based application for goal-based water conservation planning. WASD was the first utility in the state to use the Guide to develop, administer and report its water conservation program.

Implementation of the Guide's Best Management Practices (BMPs) assists WASD with meeting the projected 19.62 MGD water savings target by 2026, as required by the WUP. As of December 31, 2017, cumulative water savings from BMPs are 15.34 MGD, exceeding the calendar year 2017 water savings goal of 12.49 MGD.

WASD hereby submits the eleventh Water Conservation Plan Annual Progress Report detailing Miami Dade County's (MDC) actions and efforts to comply with Special Permit Condition No. 17 of the modified WUP.

## SUMMARY

The Plan was created utilizing the Guide to develop and implement BMPs. The use of quantifiable BMPs has assisted in reviewing and evaluating planned and reported water savings on an annual basis to ensure the implementation of a cost-effective conservation program.

BMPs developed by the Guide included in the Plan are measured and counted toward the 2026 water savings goal of 19.62 MGD. These BMPs include financial rebates for the purchase and installation of high efficiency fixtures including toilets, faucets and showerheads as well as landscape irrigation assessments. Toilets must be Environmental Protection Agency (EPA) WaterSense certified not to exceed 1.28 gallons per flush and showerheads and faucets can either be EPA WaterSense certified or the flowrate cannot exceed 1.5 gallons per minute (gpm). The high efficiency fixture rebate program provides rebates to single and multi-family residential properties of \$50, \$25 and \$25 for toilets, faucets and showerheads, respectively. The senior high efficiency toilet rebate program implemented in 2016 provides up to \$200 for the purchase and installation of one toilet or up to \$300 for the purchase and installation of two high efficiency toilets to low income senior homeowners of MDC. The commercial program provides \$50 rebates on certified flushometer valve toilets to commercial, institutional and industrial restrooms such as airports, theaters, stadiums, schools and office buildings. The lodging program provides \$50 toward the purchase and installation of certified high efficiency toilets for qualified hotels and motels.

To reduce outdoor water use, MDC offers free landscape irrigation evaluations to single family homeowners and large property owners (i.e. condominium associations, commercial properties, etc.) that have an existing, functioning in-ground irrigation system in place. Rebates are available toward the purchase and installation of retrofits recommended in the evaluation.

In addition to the above BMPs, other measures have been developed to assist WASD to reach its water saving goals. They include: 1) adoption of water use efficiency standards for new residential and commercial developments enacted by the Miami-Dade Board of County Commissioners on January 1, 2009; 2) free showerhead exchanges – MDC residents can exchange their old showerhead for a new, high efficiency model; 3) free multi-family showerhead retrofits – property owners and managers of multi-family residences constructed before 1996 are eligible for a free large volume showerhead distribution and 4) water conservation kits – residents concerned about high water bills can obtain a free water conservation kit which includes a high efficiency showerhead, kitchen swivel faucet aerator, 1.0 gpm bathroom aerator and leak detection dye tablets.

The County continues to implement the year-round permanent landscape irrigation restriction ordinance which limits landscape irrigation to two days per week. A written advisory notice is sent to follow up on formal complaints that are received through either the County's 3-1-1 system or via a web-based e-mail system. The County has also enacted a tiered water rate structure which includes increasing water rates for higher water use to encourage conservation.

Educational outreach is an important component of MDC's water conservation efforts. During 2017, WASD participated in 60 outreach and education events providing information to residents about the region's water resources and the importance of conserving it. Free giveaways are provided encouraging participants to visit us and learn about WASD's incentives (BMPs) to save water. Free reusable water bottles, chip clips, fans, shower timers, aerators (all with water conservation messaging) are an example of items provided. In addition, WASD partners with Dream in Green (DIG), a local not for profit environmental educational organization to education students and residents about the water/energy nexus. DIG's Water + Energy + Learning + Behavior (WELAB) workshops educate residents about the importance of conserving water and energy. Participants are provided a free toolkit including a high efficiency showerhead, lightbulbs, reusable water bottle and showertimers contributed by WASD. In addition, WASD conducts lightbulb and

showerhead exchanges during the year at county-wide outreach events (i.e. Adopt a Tree) to educate residents on the water/energy nexus connection. Residents can bring in up to three incandescent lightbulbs and two old showerheads in exchange for energy efficient Compact Fluorescent Lamp (CFLs) lightbulbs and high efficiency showerheads free of charge. Education outreach also includes WASD's annual *Every Drop Counts Poster Contest* which invites K-5<sup>th</sup> grade students to submit a poster conveying a water conservation theme. To incentivize participation, each child that submits a poster receives an *Every Drop Counts* t-shirt. Thirteen winners, one from each county commission district is selected and provided gifts, prizes and invited to an awards ceremony for their efforts. This year's event drew over 4,300 submissions from 130 county wide schools. A calendar is created each year depicting the thirteen winner's posters and distributed county wide conveying the message of water conservation and its importance to the county's water supply.

MDC has developed a water conservation website that provides information on indoor and outdoor conservation in addition to the children's outreach program and business water conservation. To learn more, visit <http://www.miamidade.gov/waterconservation/home.asp>.

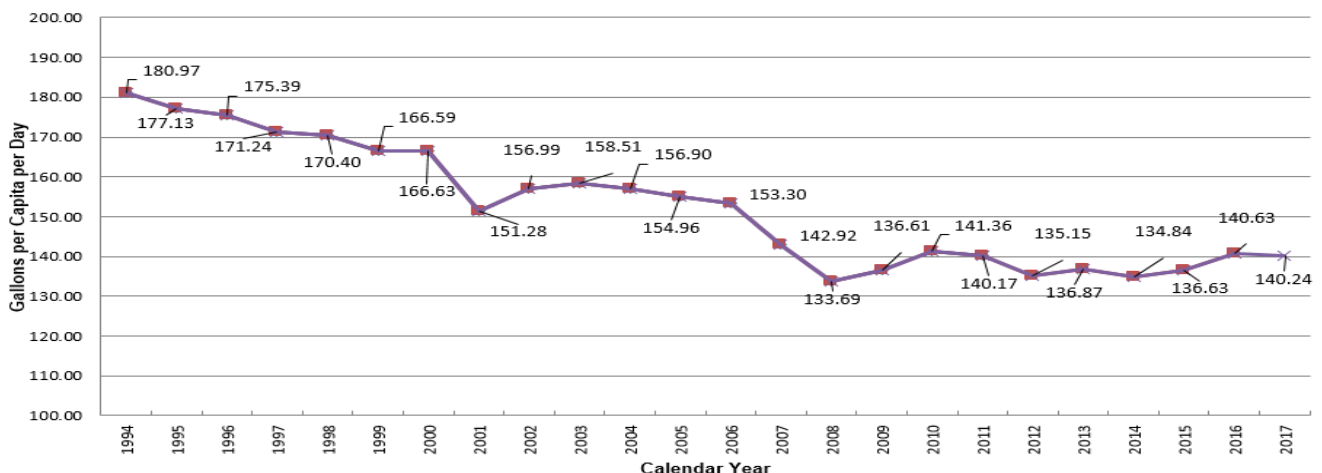
Because of these efforts as of December 31, 2017, MDC is currently experiencing actual finished water demands of 323.1 MGD which is approx. 19 MGD lower than 2006 actual finished water demands of 341.62 MGD (as of 12/31/2006, the year prior to the implementation of the WUE Plan). The reduced demands are the result of the implementation of the Water Use Efficiency Plan, adoption of year-round permanent irrigation restrictions and water loss reduction efforts.

## SECTION I - PLAN IMPLEMENTATION

The BMPs implemented are shown in Appendix A. As a result of these and other efforts detailed in the previous section, MDC has experienced a lower than expected per capita water consumption. Figure 1 reflects the historical systemwide per capita, showing the effectiveness of WASD's water efficiency strategies. Please note that per capita calculations are revised each year based on current population data from the Miami-Dade County Planning Division of the Department of Regulatory and Economic Resources.

Table 1 shows both the estimated water savings achieved through implementation of the BMPs and the corresponding annual planned goal for water savings. As of December 31, 2017, estimated water savings from implementation of BMPs are approx. 15.34 MGD, exceeding the water savings target set for that year of 12.49 MGD.

**Figure 1. Miami Dade Water & Sewer Dept. Historical Systemwide Average Finished Water Per Capita**



**Table 1. Water Savings Report Summary**

YEAR	WATER SAVINGS (MGD)		SAVINGS/ YR
	Planned	Reported	
2007	1.09	1.21	
2008	2.24	3.48	2.26
2009	3.53	4.90	1.43
2010	4.82	6.54	1.64
2011	6.10	8.47	1.92
2012	7.22	10.07	1.61
2013	8.42	11.23	1.15
2014	9.54	12.34	1.12
2015	10.66	14.14	1.80
2016	11.70	15.08	0.94
2017	12.49	15.34	0.26

**APPENDIX A - BMP IMPLEMENTATION  
THROUGH DECEMBER 31, 2017**

**BMP: Residential High Efficiency Toilet (HET) Rebate**  
**Cost: \$50/rebate**

<b>Year</b>		<b>Units</b>	<b>Savings/Account gallons per account per day</b>	<b>Total Savings (gal/day)</b>
<b>2007</b>	Planned	750	29	21,750
	Reported	971	29	28,159
	Difference	221		6,409
<b>2008</b>	Planned	750	29	21,750
	Reported	1253	29	36,337
	Difference	503		14,587
<b>2009</b>	Planned	1000	29	29,000
	Reported	3478	29	100,862
	Difference	2478		71,862
<b>2010</b>	Planned	2000	29	58,000
	Reported	2622	29	76,038
	Difference	622		18,038
<b>2011</b>	Planned	2000	29	58,000
	Reported	2566	29	74,414
	Difference	566		16,414
<b>2012</b>	Planned	1200	29	34,800
	Reported	1220	29	35,380
	Difference	20		580
<b>2013</b>	Planned	1500	29	43,500
	Reported	1547	29	44,863
	Difference	75		2,175
<b>2014</b>	Planned	1500	29	43,500
	Reported	1558	29	45,182
	Difference	58		1,682
<b>2015</b>	Planned	1450	29	42,050
	Reported	1887	29	54,723
	Difference	437		12,673



<b>2016</b>	Planned	1450	29	42,050
	Reported	1772	29	51,388
	Difference	322		9,338
<b>2017</b>	Planned	2400	29	69,600
	Reported	1469	29	42,601
	Difference	-931		-26,999

**BMP: Multifamily High Efficiency Toilet (HET) Rebate**  
**Cost: \$50/rebate<sup>1</sup>**

<b>Year</b>		<b>Units</b>	<b>Savings/Unit Gallons per multi-family unit per day</b>	<b>Total Savings (gal/day)</b>
<b>2007</b>	Planned	0	64	0
	Reported	0	64	0
	Difference	0		
<b>2008</b>	Planned	0	64	0
	Reported	0	64	0
	Difference	0		
<b>2009</b>	Planned	310	64	19,840
	Reported	315	64	20,160
	Difference	5		320
<b>2010</b>	Planned	0	64	0
	Reported	0	64	0
	Difference	0		
<b>2011</b>	Planned	0	64	0
	Reported	0	64	0
	Difference	0		
<b>2012</b>	Planned	0	64	0
	Reported	0	64	0
	Difference	0		0
<b>2013</b>	Planned	0	64	0
	Reported	0	64	0
	Difference	0		0
<b>2014</b>	Planned	0	64	0
	Reported	0	64	0
	Difference	0		0
<b>2015</b>	Planned	80	29	2,320
	Reported	588	29	17,052
	Difference	508		14,732

<b>2016</b>	Planned	80	29	2,320
	Reported	519	29	15,051
	Difference	439		12,731
<b>2017</b>	Planned	120	29	3,480
	Reported	635	29	18,415
	Difference	515		14,935

<sup>1</sup>Incorrectly combined with Residential High Efficiency Toilet Rebates prior to 2015

**BMP: Senior High Efficiency Toilet (HET) Rebate**

**Cost: \$200 for purchase and installation of one toilet/\$300 for purchase and installation of two toilets**

<b>Year</b>		<b>Units</b>	<b>Savings/Account gallons per account per day</b>	<b>Total Savings (gal/day)</b>
<b>2016</b>	Planned	0	29	0
	Reported	41	29	1,189
	Difference	41		1,189
<b>2017</b>	Planned	480	29	13,920
	Reported	191	29	5,539
	Difference	-289		-8,381

**BMP: Single Family High Efficiency Showerhead Rebate**  
**Cost: \$25/rebate<sup>1</sup>**

<b>Year</b>		<b>Units</b>	<b>Savings/Measure Gallons/Unit/Day</b>	<b>Total Savings Gallons Per Day (gal/day)</b>
<b>2007</b>	Planned	0	35	0
	Reported	0	35	0
	Difference	0		0
<b>2008</b>	Planned	0	35	0
	Reported	0	35	0
	Difference	0	35	0
<b>2009</b>	Planned	0	35	0
	Reported	0	35	0
	Difference	0		0
<b>2010</b>	Planned	0	35	0
	Reported	0	35	0
	Difference	0		0
<b>2011</b>	Planned	0	35	0
	Reported	0	35	0
	Difference	0		0
<b>2012</b>	Planned	50	35	1750
	Reported	23	35	805
	Difference	-27		-945
<b>2013</b>	Planned	50	35	1750
	Reported	46	35	1610
	Difference	-4		-140
<b>2014</b>	Planned	0	35	0
	Reported	59	35	2,065
	Difference	59		2,065
<b>2015</b>	Planned	0	35	0
	Reported	167	35	5,845

	Difference	167		5,845
<b>2016</b>	Planned	0	35	0
	Reported	279	35	9,765
	Difference	279		9,660
<b>2017</b>	Planned	300	35	10,500
	Reported	317	35	11,095
	Difference	17		595

<sup>1</sup>Note: originally \$10/rebate

**BMP: Single Family High Efficiency Faucet Rebate**  
**Cost: \$25/rebate<sup>1</sup>**

<b>Year</b>		<b>Units</b>	<b>Savings/Measure Gallons/Unit/Day</b>	<b>Total Savings Gallons Per Day (gal/day)</b>
<b>2007</b>	Planned	0	12	0
	Reported	0	12	0
	Difference	0		0
<b>2008</b>	Planned	0	12	0
	Reported	0	12	0
	Difference	0		0
<b>2009</b>	Planned	0	12	0
	Reported	0	12	0
	Difference	0		0
<b>2010</b>	Planned	0	12	0
	Reported	0	12	0
	Difference	0		0
<b>2011</b>	Planned	0	12	0
	Reported	0	12	0
	Difference	0		0
<b>2012</b>	Planned	50	12	600
	Reported	107	12	1284
	Difference	57		684
<b>2013</b>	Planned	50	12	600
	Reported	120	12	1440
	Difference	70		840
<b>2014</b>	Planned	0	12	0
	Reported	151	12	1,812
	Difference	151		1,812
<b>2015</b>	Planned	0	12	0
	Reported	433	12	5,196

	Difference	433		5,196
<b>2016</b>	Planned	0	12	0
	Reported	564	12	6,768
	Difference	564		6,768
<b>2017</b>	Planned	600	12	7,200
	Reported	584	12	7,008
	Difference	-16	12	-192

<sup>1</sup>Note: originally \$10/rebate



**BMP: Large Property Landscape Irrigation Evaluation Rebate**  
**Cost: \$2,850/rebate**

<b>Year</b>		<b>Units</b>	<b>Savings/Account Gallons/account/day</b>	<b>Total Savings (gal/day)</b>
<b>2007</b>	Planned	20	35,000	700,000
	Reported	20	35,000	700,000
	Difference	0		
<b>2008</b>	Planned	20	35,000	700,000
	Reported	50	35,000	1,750,000
	Difference	30		1,050,000
<b>2009</b>	Planned	20	35,000	700,000
	Reported	25	35,000	875,000
	Difference	5		175,000
<b>2010</b>	Planned	25	35,000	875,000
	Reported	26	35,000	910,000
	Difference	1		35,000
<b>2011</b>	Planned	35	35,000	1,225,000
	Reported	44	35,000	1,540,000
	Difference	9		315,000
<b>2012</b>	Planned	25	35,000	875,000
	Reported	36	35,000	1,260,000
	Difference	11		385,000
<b>2013</b>	Planned	26	35,000	910,000
	Reported	28	35,000	980,000
	Difference	2		70,000
<b>2014</b>	Planned	27	35,000	945,000
	Reported	25	35,000	875,000
	Difference	-2		-70,000
<b>2015</b>	Planned	69	35,000	2,415,000
	Reported	42	35,000	1,470,000

	Difference	-27		-945,000
<b>2016</b>	Planned	69	various	-
	Reported	23	various	770,448
	Difference	-46		-
<b>2017</b>	Planned	24	various	33,600
	Reported	37	various	75,432
	Difference	13		41,832

**BMP: Single Family Home Landscape Irrigation Evaluation Rebate**  
**Cost: \$500/rebate**

Year		Units	Savings/Account Gallons/account/day	Total Savings (gal/day)
<b>2007</b>	Planned	0	233	0
	Reported	0	233	0
	Difference	0		
<b>2008</b>	Planned	0	233	0
	Reported	0	233	0
	Difference	0		
<b>2009</b>	Planned	200	233	46,600
	Reported	200	233	46,600
	Difference	0		
<b>2010</b>	Planned	120	233	27,960
	Reported	131	233	30523
	Difference	11		2563
<b>2011</b>	Planned	120	233	27,960
	Reported	145	233	33,785
	Difference	25		5,825
<b>2012</b>	Planned	100	233	23,300
	Reported	81	233	18,873
	Difference	-19		-4427
<b>2013</b>	Planned	75	233	17,475
	Reported	58	233	13,514
	Difference	17		-3961
<b>2014</b>	Planned	75	233	17,475
	Reported	75	233	17,475
	Difference	17		0
<b>2015</b>	Planned	195	233	45,435
	Reported	84	233	19,572
	Difference	-111		-25,863

<b>2016</b>	Planned	195	233	45,435
	Reported	73	233	17,009
	Difference	-122		-28,426
<b>2017</b>	Planned	60	233	13,980
	Reported	84	233	19,572
	Difference	24		5,592

**BMP: Single Family – High Efficiency Showerhead Exchange**  
**Cost: \$3.50/showerhead**

<b>Year</b>		<b>Units</b>	<b>Savings/Measure Gallons/measure/day</b>	<b>Total Savings (gal/day)</b>
<b>2007</b>	Planned	1600	35	56,000
	Reported	4194	35	146,790
	Difference	2594		90,790
<b>2008</b>	Planned	1600	35	56,000
	Reported	2437	35	85,295
	Difference	837		29,295
<b>2009</b>	Planned	1480	35	51,800
	Reported	2163	35	75,705
	Difference	683		23,905
<b>2010</b>	Planned	1500	35	52,500
	Reported	1986	35	69,510
	Difference	486		17,010
<b>2011</b>	Planned	1500	35	52,500
	Reported	1936	35	67,760
	Difference	436		15,260
<b>2012</b>	Planned	1500	35	52,500
	Reported	3158	35	110,530
	Difference	1658		58,030
<b>2013</b>	Planned	1100	35	38,500
	Reported	1228	35	42,980
	Difference	128		4,480
<b>2014</b>	Planned	1500	35	52,500
	Reported	1991	35	69,685
	Difference	491		17,185
<b>2015</b>	Planned	1500	35	52,500
	Reported	2554	35	89,390
	Difference	1,054		36,890

<b>2016</b>	Planned	1500	35	52,500
	Reported	1463	35	51,205
	Difference	-37		-1,295
<b>2017</b>	Planned	900	35	31,500
	Reported	1121	35	39,235
	Difference	221		7,735

**BMP: Multifamily – High Efficiency Showerhead Exchange**  
**Cost: \$3.50/showerhead**

<b>Year</b>		<b>Units</b>	<b>Savings/Measure Gallons/Unit/Day</b>	<b>Total Savings Gallons Per Day (gal/day)</b>
<b>2007</b>	Planned	1600	35	56,000
	Reported	4193	35	146,755
	Difference	2593		90,755
<b>2008</b>	Planned	1600	35	56,000
	Reported	4000	35	140,000
	Difference	2400	35	84,000
<b>2009</b>	Planned	2120	35	74,200
	Reported	2130	35	74,550
	Difference	10		350
<b>2010</b>	Planned	5000	35	175,000
	Reported	6519	35	228,165
	Difference	3485		53,165
<b>2011</b>	Planned	2500	35	87,500
	Reported	2857	35	99,995
	Difference	357		12,495
<b>2012</b>	Planned	2000	35	70,000
	Reported	2163	35	75,705
	Difference	163		5,705
<b>2013</b>	Planned	800	35	28,000
	Reported	814	35	28,490
	Difference	14		490
<b>2014</b>	Planned	1000	35	35,000
	Reported	1167	35	40,845
	Difference	67		5,845
<b>2015</b>	Planned	1000	35	35,000
	Reported	0	35	0

	Difference	-1000		-35,000
<b>2016</b>	Planned	2003	35	70,105
	Reported	77	35	2,695
	Difference	-1,926		-67,410
<b>2017</b>	Planned	300	35	10,500
	Reported	1066	35	37,310
	Difference	766		26,810



**BMP: Single Family High Efficiency Retrofit Kit (includes bathroom and kitchen faucet aerators and dye tablets)**

**Cost: \$5/kit**

<b>Year</b>		<b>Units</b>	<b>Savings/Measure Gallons/measure/day</b>	<b>Total Savings (gal/day)</b>
<b>2007</b>	Planned	1600	12	19,200
	Reported	4194	12	50,328
	Difference	2594		31,128
<b>2008</b>	Planned	1600	12	19,200
	Reported	2437	12	29,244
	Difference	837		10,044
<b>2009</b>	Planned	1480	12	17,760
	Reported	1498	12	17,976
	Difference	18		216
<b>2010</b>	Planned	1000	12	12,000
	Reported	1321	12	15,852
	Difference	321		3,852
<b>2011</b>	Planned	1000	12	12,000
	Reported	1417	12	17,004
	Difference	417		5,004
<b>2012</b>	Planned	1000	12	12,000
	Reported	2576	12	30,912
	Difference	1576		18,912
<b>2013</b>	Planned	800	24	9,600
	Reported	890	24	10,680
	Difference	90		1,080
<b>2014</b>	Planned	1000	24	24,000
	Reported	1893	24	45,432
	Difference	893		21,432
<b>2015</b>	Planned	1000	24	24,000
	Reported	1345	24	32,280

	Difference	345		8,280
<b>2016</b>	Planned	1000	24	24,000
	Reported	160	24	3,840
	Difference	-840		-20,160
<b>2017</b>	Planned	0	24	0
	Reported	0	24	0
	Difference	0		0

**BMP: Multifamily High Efficiency Retrofit Kit (includes bathroom and kitchen faucet aerators and dye tablets)**

**Cost: \$5/kit**

<b>Year</b>		<b>Units</b>	<b>Savings/Measure Gallons/measure/day</b>	<b>Total Savings (gal/day)</b>
<b>2007</b>	Planned	1600	12	19,200
	Reported	4193	12	50,316
	Difference	2593		31,116
<b>2008</b>	Planned	1600	12	19,200
	Reported	4000	12	48,000
	Difference	2400		28,800
<b>2009</b>	Planned	2120	12	25,440
	Reported	2130	12	25,560
	Difference	10		120
<b>2010</b>	Planned	2600	12	31,200
	Reported	5657	12	67,884
	Difference	3057		36,684
<b>2011</b>	Planned	2000	12	24,000
	Reported	2618	12	31,416
	Difference	618		7,416
<b>2012</b>	Planned	1500	12	18,000
	Reported	1567	12	18,804
	Difference	67		804
<b>2013</b>	Planned	500	24	12,000
	Reported	662	24	15,888
	Difference	162		3,888
<b>2014</b>	Planned	750	24	18,000
	Reported	576	24	13,824
	Difference	-174		-4,176
<b>2015</b>	Planned	750	24	18,000
	Reported	0	24	0

	Difference	-750		-18,000
<b>2016</b>	Planned	1,250	24	30,000
	Reported	9	24	8,640
	Difference	-1,241		-29,784
<b>2017</b>	Planned	0	24	0
	Reported	0	24	0
	Difference	0		0

**BMP: Single Family Senior and Low Income High Efficiency Toilet & Retrofit Kit\***

Cost: N/A

Note: Program ended October 2012

Year		Units	Savings/Account (Address) Gallons/account/day	Total Savings (gal/day)
2007	Planned	750	64	48,000
	Reported	890	64	56,960
	Difference	140		8,960
2008	Planned	1000	64	64,000
	Reported	1124	64	71,936
	Difference	124		7,936
2009	Planned	1000	64	64,000
	Reported	1000	64	64,000
	Difference	0		
2010	Planned	1000	64	64,000
	Reported	845*	64	54,080
	Difference	-155		-9,920
2011	Planned	750	64	48,000
	Reported	706	64	45,184
	Difference	44		-2,816
2012	Planned	750	64	48,000
	Reported	463	64	29,632
	Difference	-287		-18,368

\*Note: Reported Value is for each address where a retrofit occurred. A retrofit consists of up to 2 HETs, 2 showerheads, 2 bathroom faucet aerators and a kitchen aerator.

**BMP: Single Family High Efficiency Clothes Washer Rebates**

Cost: N/A

Note: Program ended October 2009

Year		Units	Savings/Measure gallon/measure/day	Total Savings (gal/day)
<b>2007</b>	Planned	0	16.3	0
	Reported	0	16.3	0
	Difference	0		
<b>2008</b>	Planned	150	16.3	2,445
	Reported	849	16.3	13,838.7
	Difference	699		11,393.7
<b>2009</b>	Planned	250	16.3	4,075
	Reported	937	16.3	15,273.1
	Difference	687		11,198.1

**BMP: Non-Residential High Efficiency Aerators (Industrial, Commercial and Institutional (ICI))**  
**Cost: \$0.50/aerator**

<b>2014</b>	Planned	0	12	0
	Reported	205	12	2,460
	Difference	205		2,460
<b>2015</b>	Planned	0	12	0
	Reported	0	12	0
	Difference	0		0
<b>2016</b>	Planned	0	12	0
	Reported	0	12	0
	Difference	0		0
<b>2017</b>	Planned	0	12	0
	Reported	0	12	0
	Difference	0		0

**BMP: Non-Residential County Owned Facilities Landscape Irrigation Evaluation (no rebate)**  
**Cost: \$250/evaluation**

<b>Year</b>		<b>Units</b>	<b>Savings/Measure Gallons/measure/day</b>	<b>Total Savings (gal/day)</b>
<b>2007</b>	Planned	22	1,500	33,000
	Reported	22	1,500	33,000
	Difference	0		
<b>2008</b>	Planned	10	1,500	15,000
	Reported	38	1,500	57,000
	Difference	28		42,000
<b>2009</b>	Planned	0	1,500	0
	Reported	0	1,500	0
	Difference	0		
<b>2010</b>	Planned	0	1,500	0
	Reported	3	1,500	4500
	Difference	3		4500
<b>2011</b>	Planned	10	1,500	15000
	Reported	7	1,500	10,500
	Difference	3		-4,500
<b>2012</b>	Planned	0	1500	0
	Reported	16	1500	24,000
	Difference	16		24,000
<b>2013</b>	Planned	0	1500	0
	Reported	0	1500	0
	Difference			
<b>2014</b>	Planned	0	1500	0
	Reported	1	1500	1500
	Difference	1		1500
<b>2015</b>	Planned	0	1500	0
	Reported	0	1500	0
	Difference	0		0



<b>2016</b>	Planned	0	1500	0
	Reported	0	1500	0
	Difference	0		0
<b>2017</b>	Planned	0	1500	0
	Reported	0	1500	0
	Difference	0		0

**BMP: Non-Residential Green Restaurant Evaluation (no rebate)**  
**Cost: \$250/evaluation**

<b>Year</b>		<b>Units</b>	<b>Savings/Measure Gallons/measure/day</b>	<b>Total Savings (gal/day)</b>
<b>2007</b>	Planned	0	100	0
	Reported	0	100	0
	Difference	0		
<b>2008</b>	Planned	12	100	1,200
	Reported	14	100	1,400
	Difference	2		200
<b>2009</b>	Planned	12	100	1,200
	Reported	12	100	1,200
	Difference	0		
<b>2010</b>	Planned	12	100	1,200
	Reported	11	100	1,100
	Difference	-1		-100
<b>2011</b>	Planned	0	100	0
	Reported	0	100	0
	Difference	0		
<b>2012</b>	Planned	0	100	0
	Reported	0	100	0
	Difference	0		
<b>2013</b>	Planned	0	100	0
	Reported	0	100	0
	Difference	0		
<b>2014</b>	Planned	0	100	0
	Reported	9	100	900
	Difference	0		900
<b>2015</b>	Planned	0	100	0
	Reported	0	100	0
	Difference	0		0

<b>2016</b>	Planned	0	100	0
	Reported	0	100	0
	Difference	0		0
<b>2017</b>	Planned	0	100	0
	Reported	0	100	0
	Difference	0		0

**BMP: Non-Residential Green Lodging Evaluation no rebates**  
**Cost: \$250/evaluation**

<b>Year</b>		<b>Units</b>	<b>Savings/Measure gallons/measure/day</b>	<b>Total Savings (gal/day)</b>
<b>2007</b>	Planned	0	1,617	0
	Reported	0	1,617	0
	Difference	0		
<b>2008</b>	Planned	12	1,617	19,404
	Reported	17	1,617	27,489
	Difference	5		8,085
<b>2009</b>	Planned	12	1,617	19,404
	Reported	21	1,617	33,957
	Difference	9		14,553
<b>2010</b>	Planned	0	1,617	0
	Reported	4	1,617	6,468
	Difference	4		6,468
<b>2011</b>	Planned	0	1,617	0
	Reported	3	1,617	4,851
	Difference	3		4,851
<b>2012</b>	Planned	0	1,617	0
	Reported	2	1,617	3234
	Difference	2		3234
<b>2013</b>	Planned	0	1,617	0
	Reported	1	1,617	1,617
	Difference	1		1,617
<b>2014</b>	Planned	0	1,617	0
	Reported	1	1,617	1,617
	Difference	1		1,617
<b>2015</b>	Planned	1	1,617	1,617
	Reported	80	1,617	129,360
	Difference	79		127,743

<b>2016</b>	Planned	0	1,617	0
	Reported	0	1,617	0
	Difference	0		0
<b>2017</b>	Planned	0	1,617	0
	Reported	0	1,617	0
	Difference	0		0

**BMP: Non-Residential Industrial, Commercial and Institutional (ICI) Water-Use Evaluation/Implementation**

**Cost: N/A before 2017; \$50 per toilet 2017 and after**

<b>Year</b>		<b>Units</b>	<b>Savings/Measure (gpm/d)</b>	<b>Total Savings (gal/day)</b>
<b>2007</b>	Planned	22	1,500	33,000
	Reported	22	1,500	33,000
	Difference	0		
<b>2008</b>	Planned	10	1,500	15,000
	Reported	38	1,500	57,000
	Difference	28		42,000
<b>2009</b>	Planned	0	1,500	0
	Reported	0	1,500	0
	Difference	0		
<b>2010</b>	Planned	0	1,500	0
	Reported	0	1,500	0
	Difference	0		
<b>2011</b>	Planned	0	1,500	0
	Reported	0	1,500	0
	Difference	0		
<b>2012</b>	Planned	0	1,500	0
	Reported	0	1,500	0
	Difference	0		
<b>2013</b>	Planned	0	1,500	0
	Reported	0	1,500	0
	Difference	0		
<b>2014</b>	Planned	0	1,500	0
	Reported	0	1,500	0
	Difference	0		0
<b>2015</b>	Planned	0	1,500	0
	Reported	0	1,500	0

	Difference	0		0
<b>2016</b>	Planned	0	1,500	0
	Reported	0	1,500	0
	Difference	0		0
<b>2017</b>	Planned	0	29	0
	Reported	81	29	2,349
	Difference	81		2,349