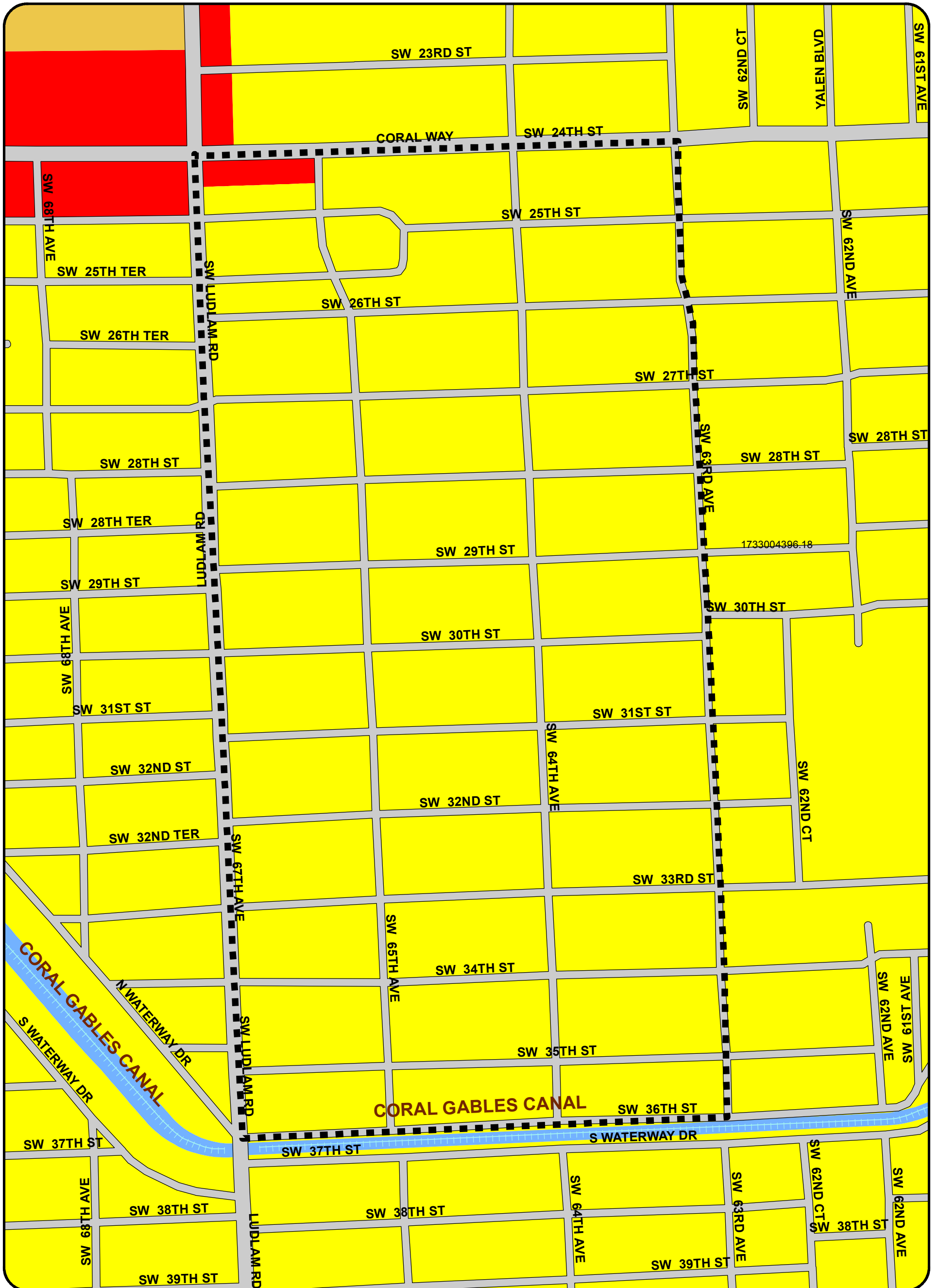


CORAL VILLA ESTATES AREA CHARRETTE FUTURE LAND USE



LEGEND

FUTURE LAND USE

- LOW DENSITY (LDR) 2.5-6 DU/AC
- LOW-MEDIUM DENSITY (LMDR) 6-13 DU/AC
- BUSINESS AND OFFICE
- WATER
- CORAL VILLA PROPOSED BOUNDARY

Miami-Dade Department of Planning and Zoning



October, 2009

