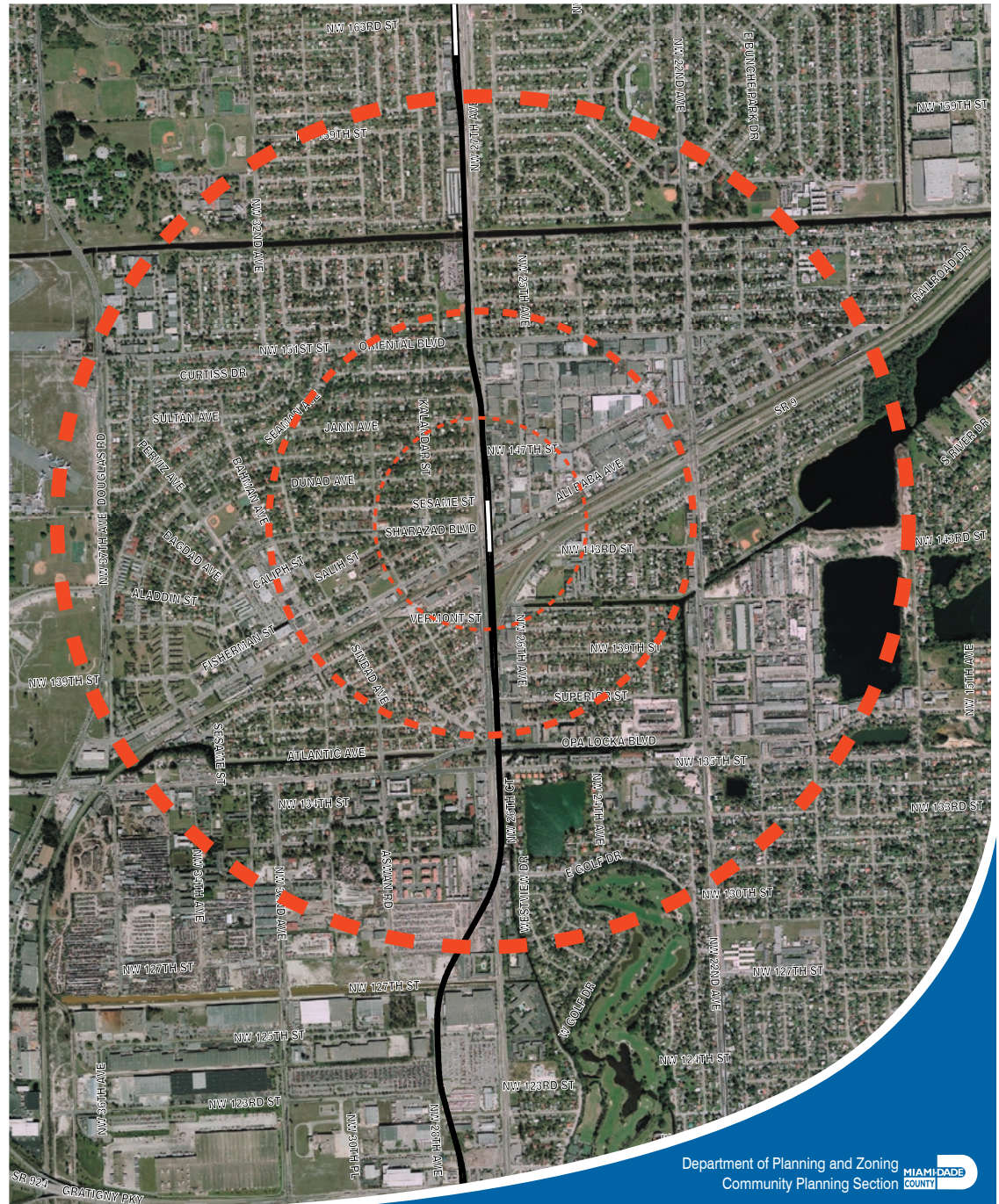
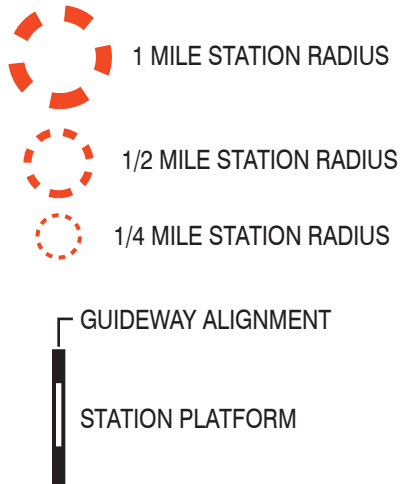
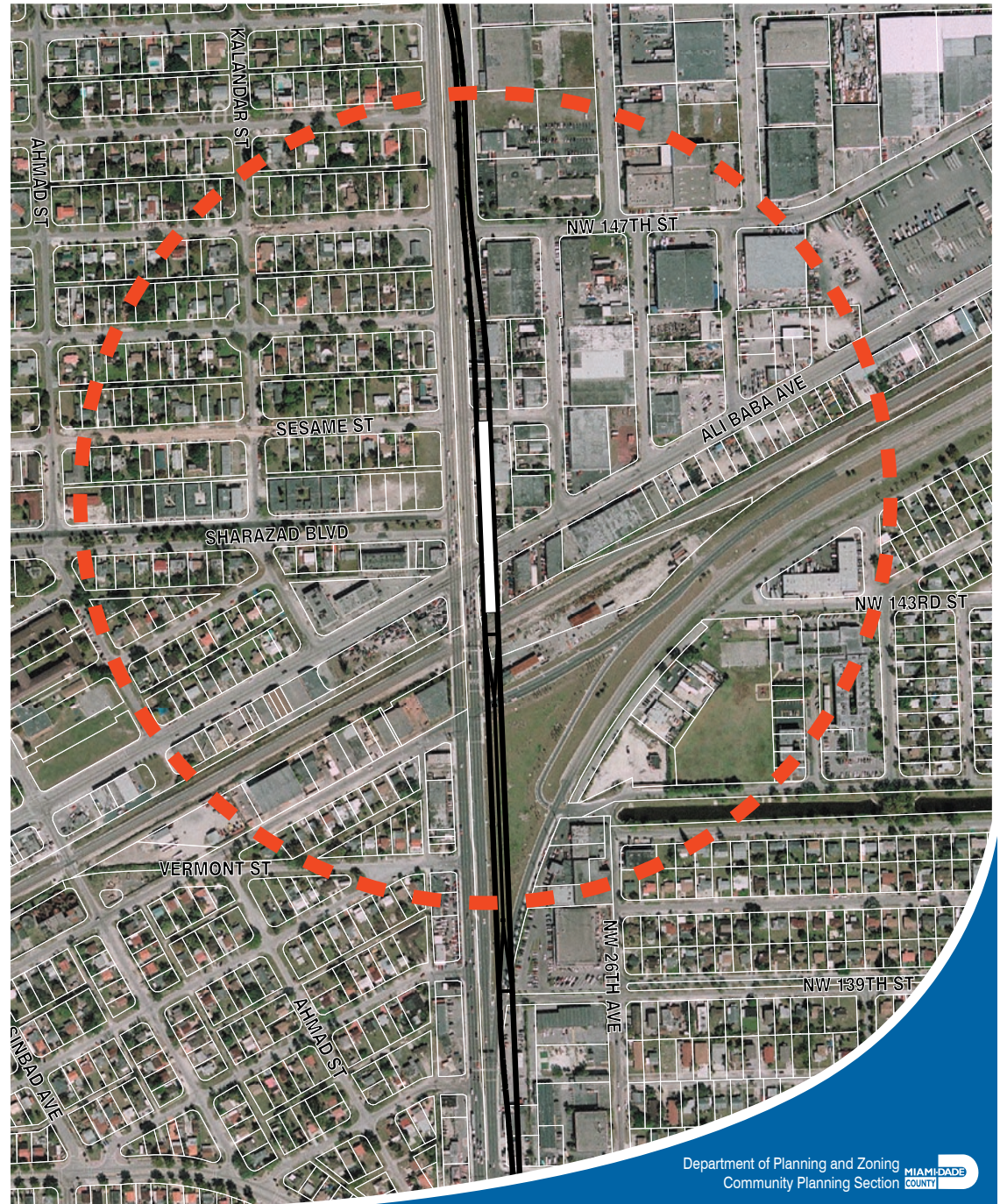
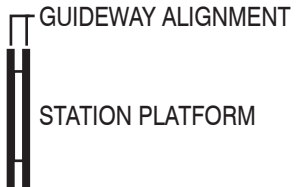
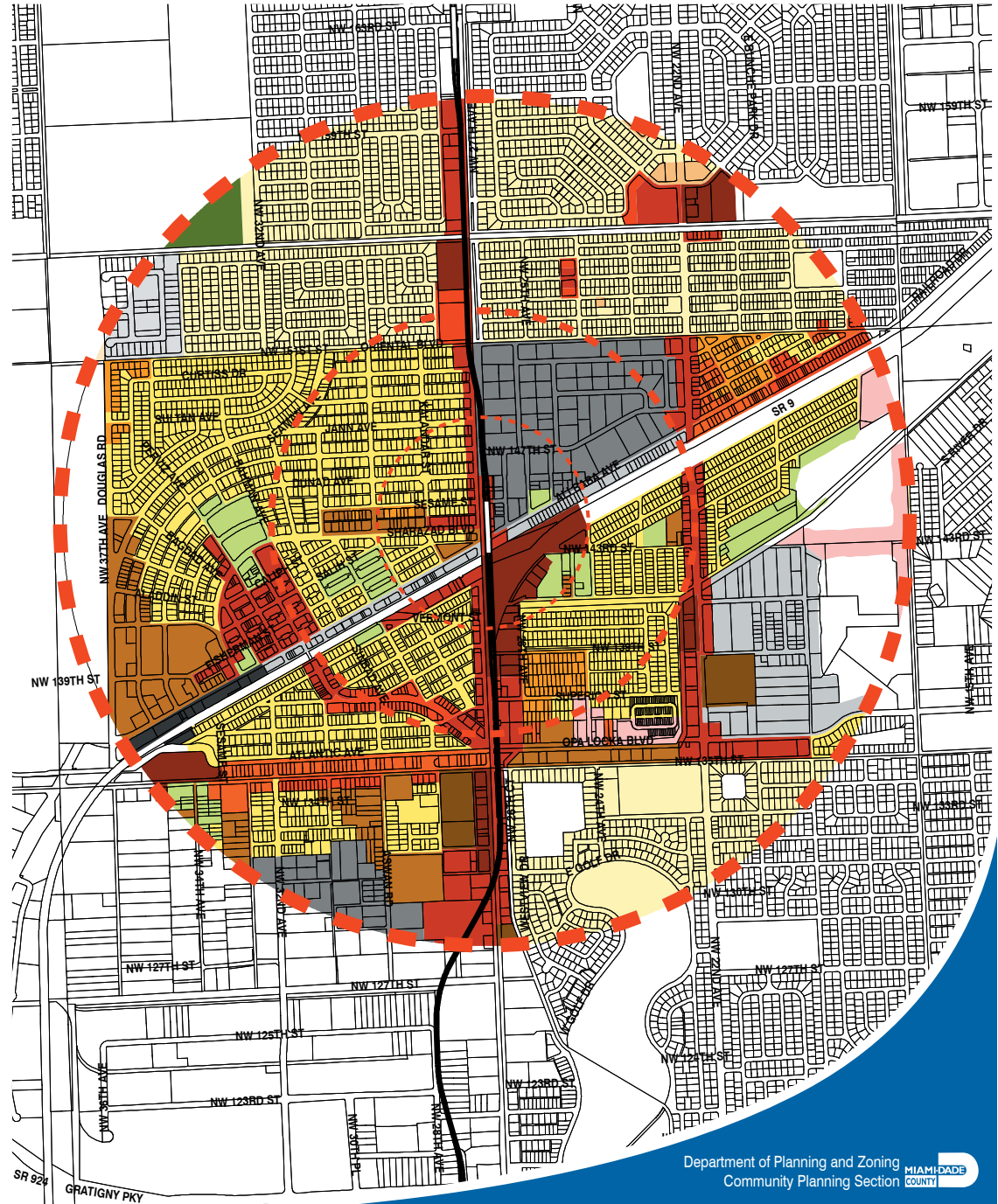
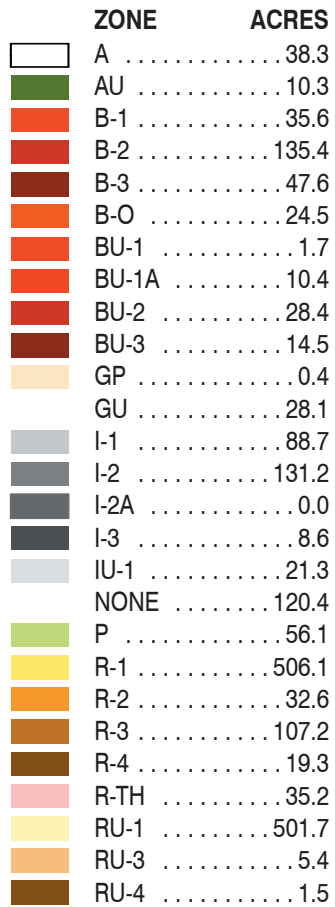


ALI BABA AVENUE STATION 2005 AERIAL ORTHOPHOTO

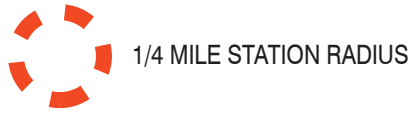


ALI BABA AVENUE STATION 2005 AERIAL ORTHOPHOTO





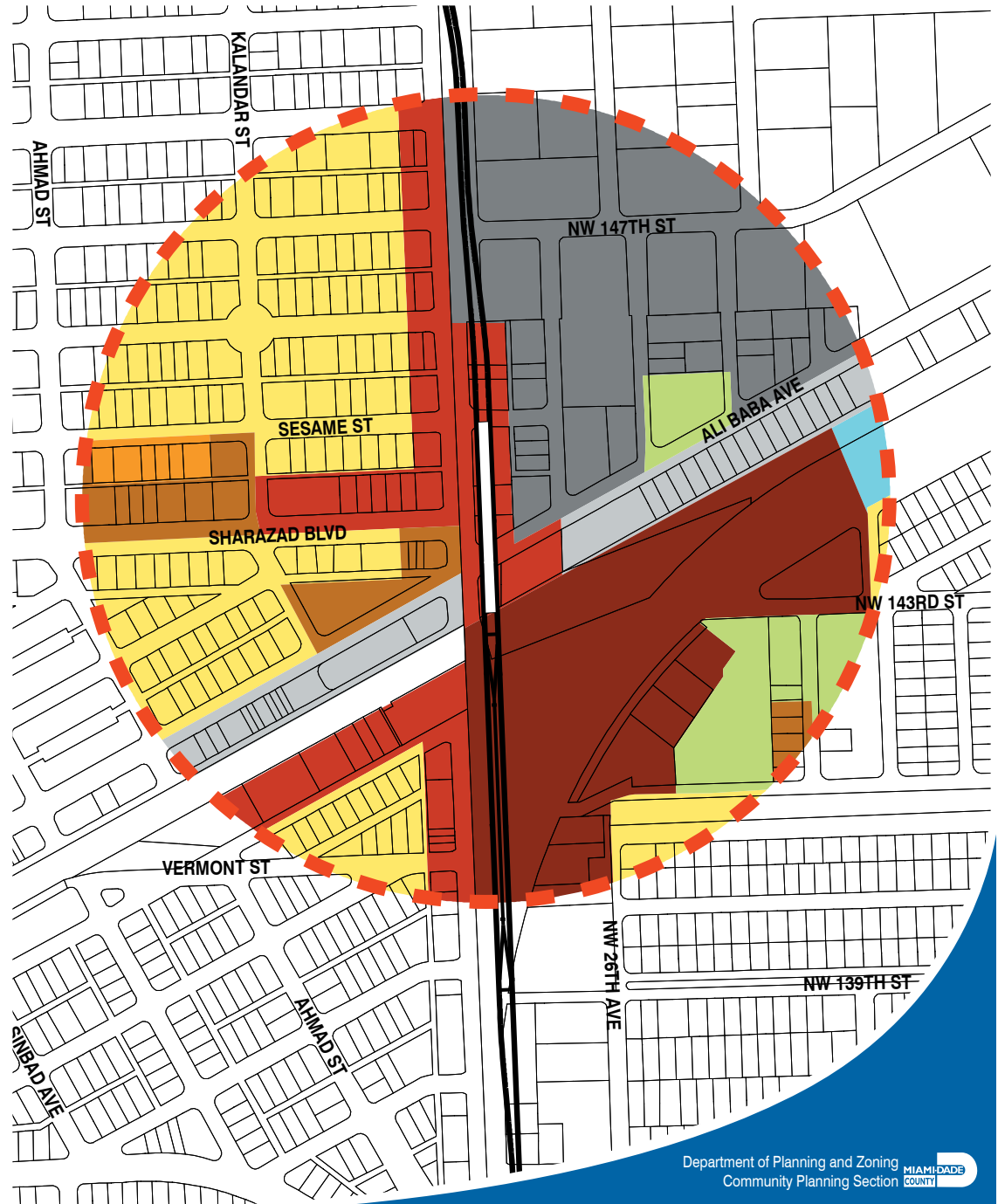
ALI BABA AVENUE STATION ZONING

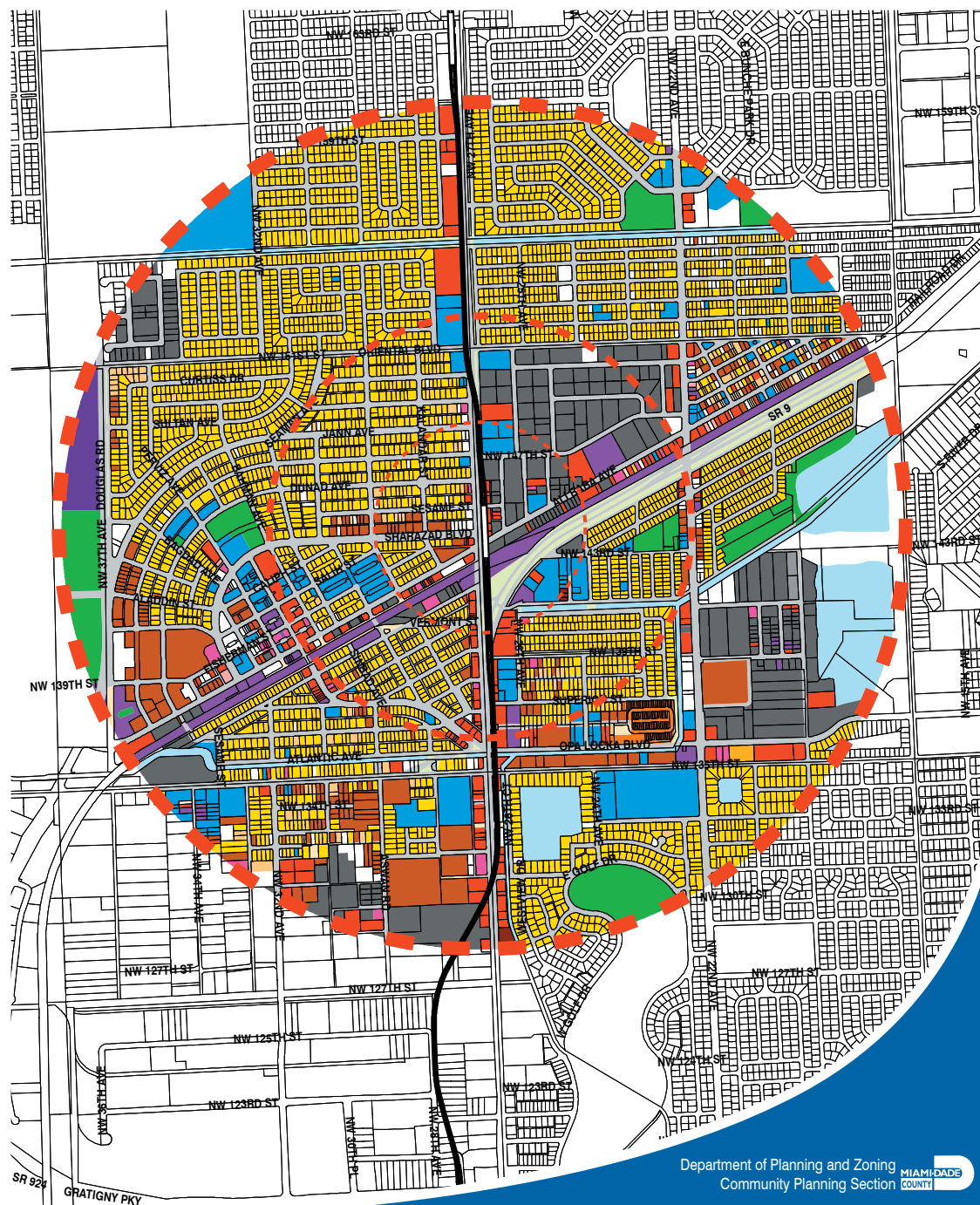
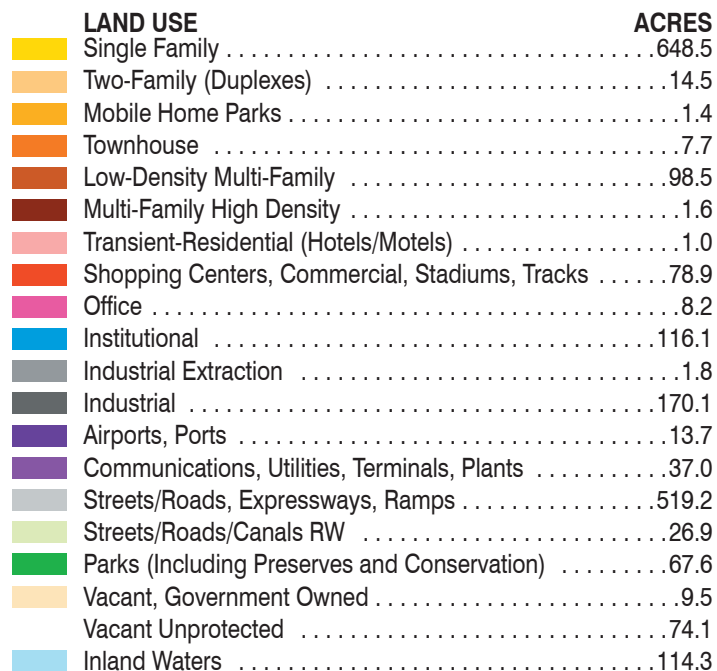


GUIDEWAY ALIGNMENT

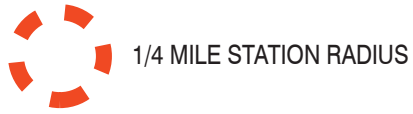


ZONE	ACRES
B-2	16.5
B-3	22.9
I-1	8.3
I-2	26.0
NONE	3.2
P	6.6
R-1	35.0
R-2	1.3
R-3	5.9





ALI BABA AVENUE STATION LAND USE

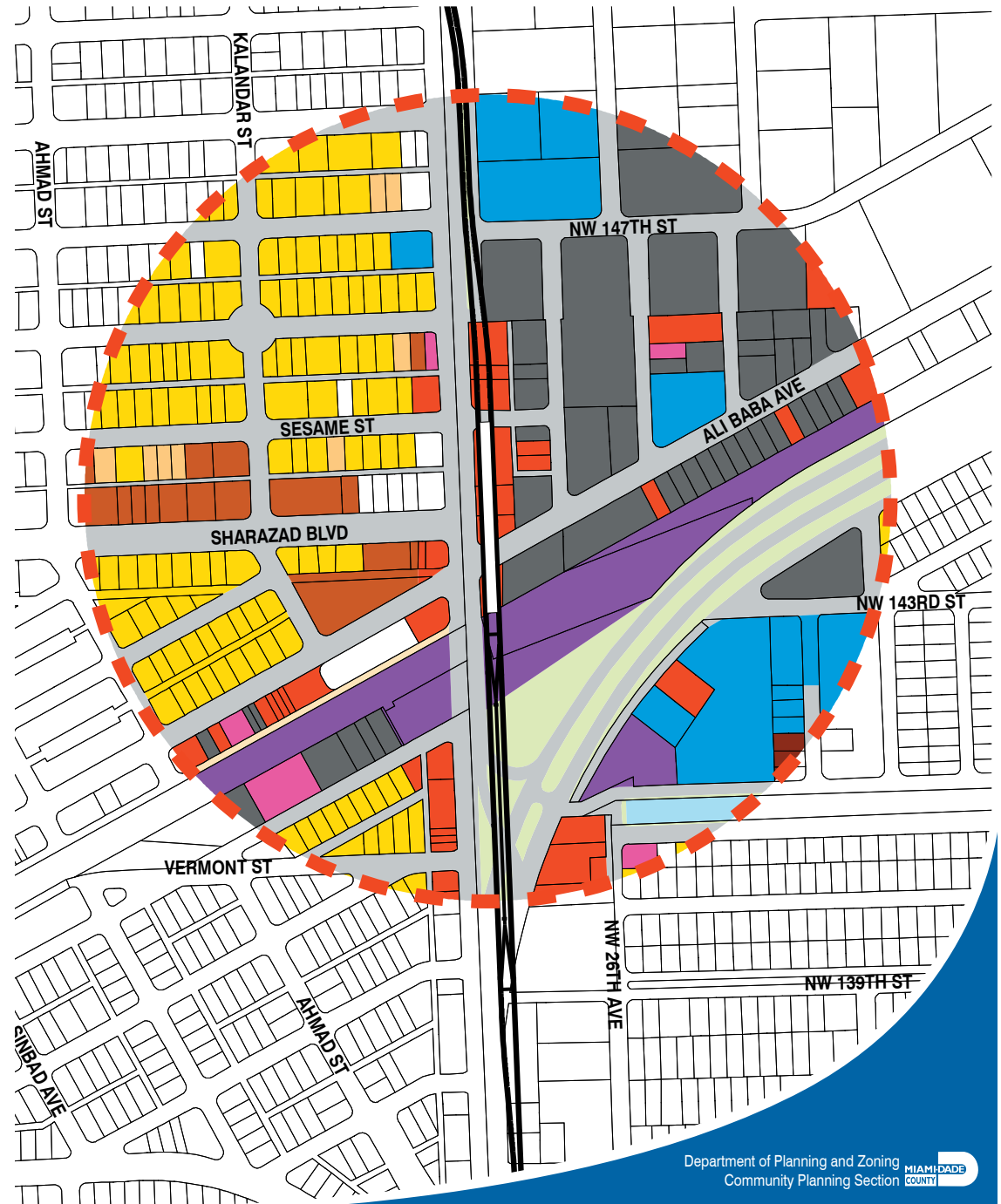


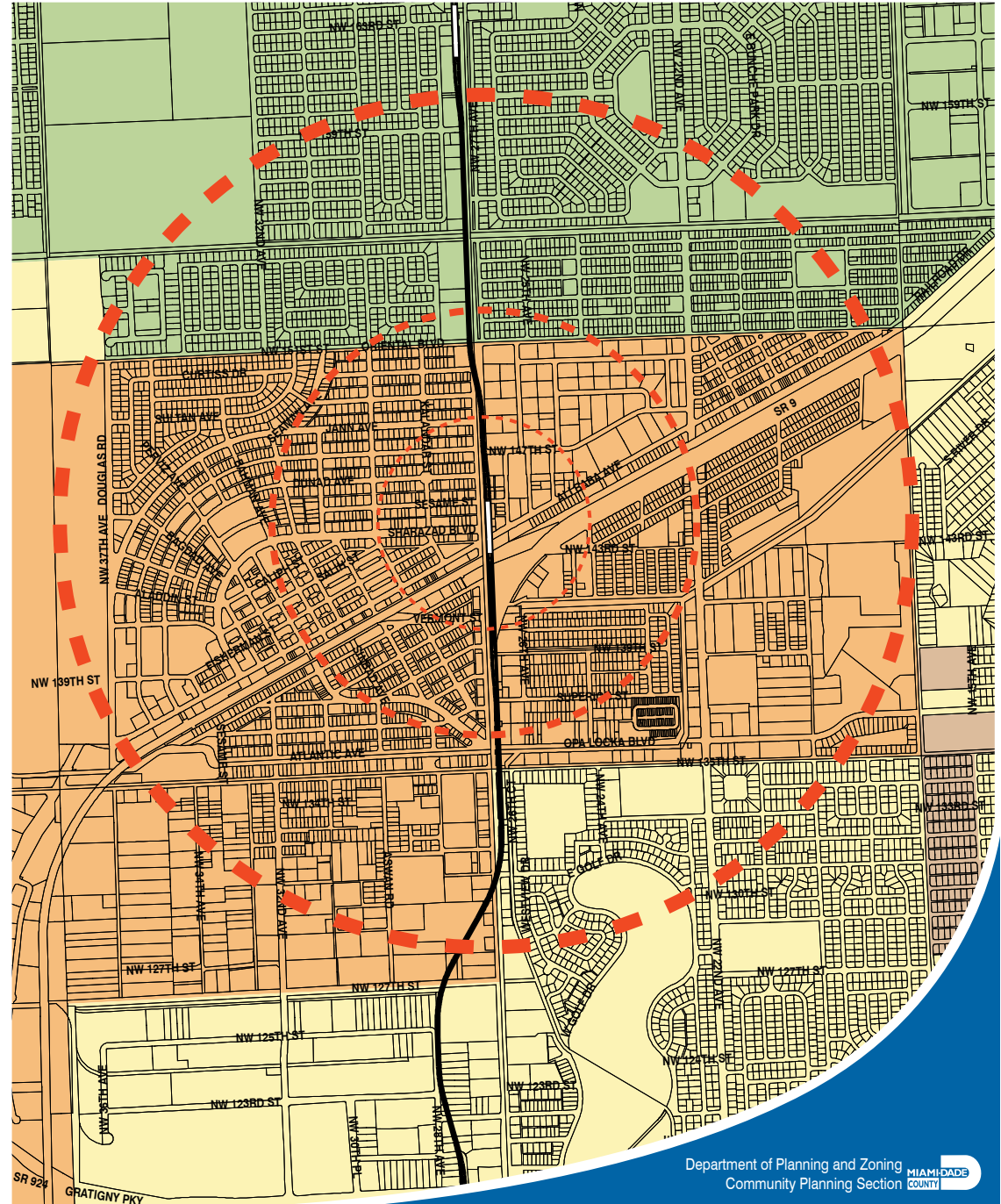
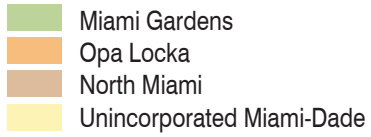
GUIDEWAY ALIGNMENT



STATION PLATFORM

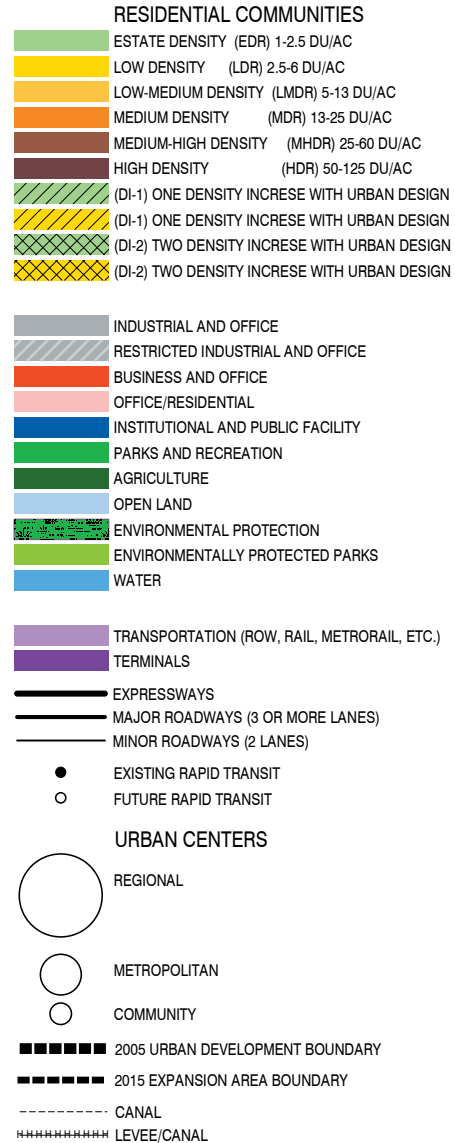
LAND USE	ACRES
Communications, Utilities, Terminals, Plants	8.7
Industrial	19.6
Inland Waters	0.7
Institutional	10.9
Low-Density Multi-Family	4.7
Multi-Family High Density	0.2
Office	1.3
Shopping Centers, Commercial, Stadiums, Tracks	7.7
Single Family	20.9
Streets/Roads, Expressways, Ramps	39.9
Streets/Roads/Canals RW	6.6
Two-Family (Duplexes)	1.1
Vacant Unprotected	2.6
Vacant, Government Owned	0.5





ALI BABA AVENUE STATION LAND USE PLAN

2005 AND 2015 LAND USE PLAN FOR MIAMI-DADE COUNTY, FLORIDA



NOTE: This figure is a graphic representation drawn at a different scale than the Official Adopted 2005 and 2015 Land Use Plan (LUP) map, which was adopted at a scale of one inch to a mile. The LUP map with subsequent adopted amendments governs where this figure differs.

